



40cm Electric Recycler[®] Mower

Model No. 21070 - 240000001 and up.

Model No. 21071 - 240000001 and up.

Model No. 21072 - 240000001 and up.

Parts Catalog

Ordering Replacement Parts

To order replacement parts, please supply the part number, the quantity, and the description of each part desired.

Understanding Reference Numbers

Each Identified part in an illustration has a reference number. The reference number for a part also appears in the parts list, along with other information about the part.

This catalog uses two special reference number formats, one to indicate parts in a service assembly and another to indicate the quantity of a given part in an illustration.

Service Assembly Reference Numbers

Parts in service assemblies have reference numbers in the form a:b. The a represents the reference number of the entire service assembly and the b represents a sequential number unique to each part within the service assembly.

For example, a wheel assembly might be identified by reference number 6, the tire by 6:1, the valve by 6:2, and the wheel by 6:3. When you order the assembly identified by reference number 6, you receive all parts identified by reference numbers 6:1, 6:2, and 6:3. However, you may also order any part individually. Reference numbers of this type appear in illustrations and in part lists.

Reference Numbers Indicating Quantity

In an illustration, if a reference number indicates more than one part, the reference number has the form nX y. The n represents the quantity of the part, the X is the multiplication symbol, and the y represents the reference number.

For example, in an illustration, the reference number 2X 37 means that two of the parts identified by reference number 37 are indicated.

Contents

Description	Page	Description	Page
Motor and Blade Assembly 3	Bag and Recycling Assembly 5
Chassis Assembly 4	Handle Assembly 6

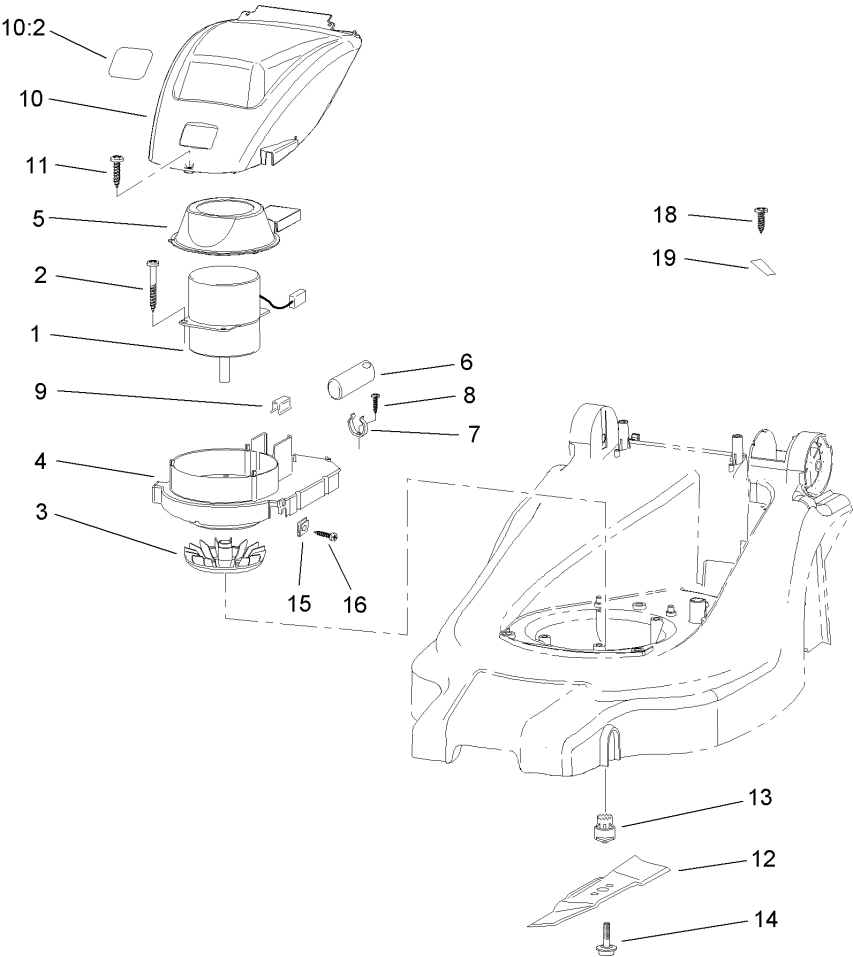
Part Description Abbreviations

Part descriptions in this catalog may include the following abbreviations.

AR.	as required	HYD.	hydraulic
ASM.	assembly	LH.	left hand
BBC.	blade brake clutch	NI.	nylon insert
CARR.	carriage	NPTF.	national pipe thread fine
DEG.	degrees	PFH.	phillips flat head
EXT.	external	PPH.	phillips pan head
FH.	flat head	PPHTF.	phillips pan head thread forming
GA.	gauge	PRH.	phillips round head
HD.	heavy-duty	PTH.	phillips truss head
HF.	hex flange	PTO.	power-take-off
HH.	hex head	RH.	right hand
HHF.	hex head flange	ROPS.	roll-over protection system
HHFTF.	hex head flange thread forming	SFH.	slotted fillister head
HJ.	hex jam	SHH.	slotted hex head
HLH.	hex lag head	SHWH.	slotted hex washer head
HOC.	height-of-cut	SPH.	slotted pan head
HSBH.	hex socket button head	SQH.	square head
HSFH.	hex socket flat head	SRH.	slotted round head
HS.	hex socket head	STD.	standard
HWH.	hex washer head	TAP.	self tapping
HWHTF.	hex washer head thread forming	TTH.	torx truss head

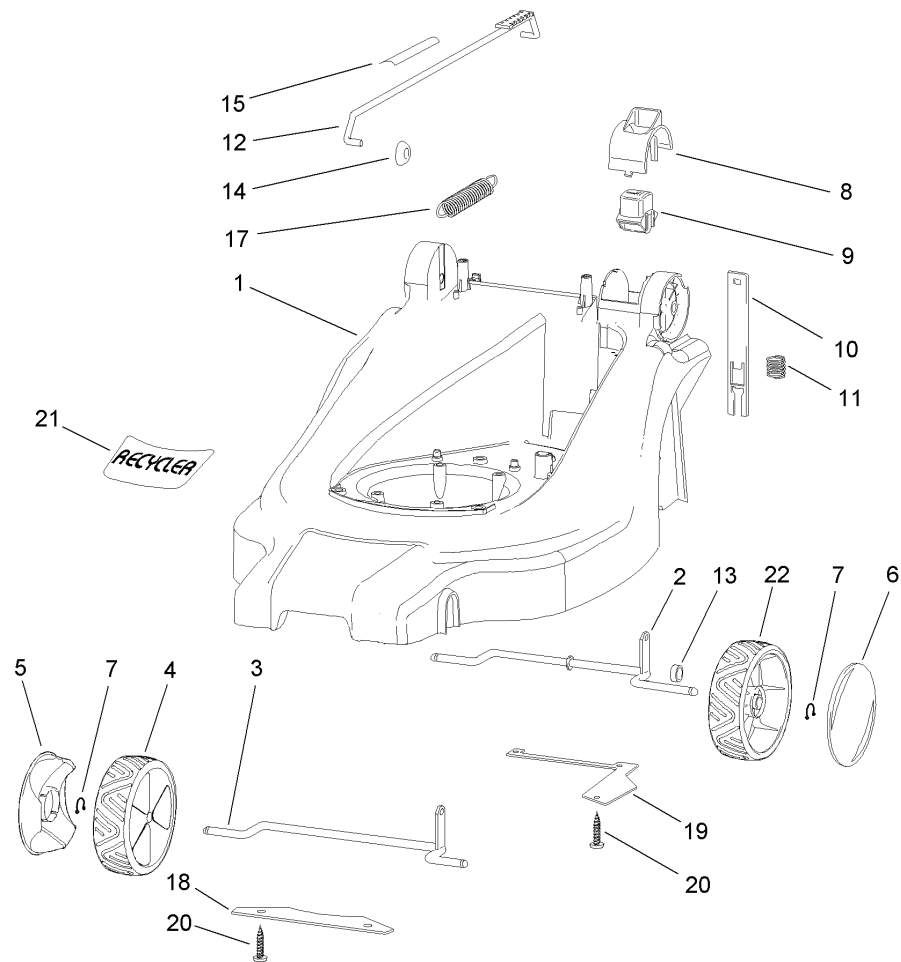
Footnotes

- ❶ Not illustrated



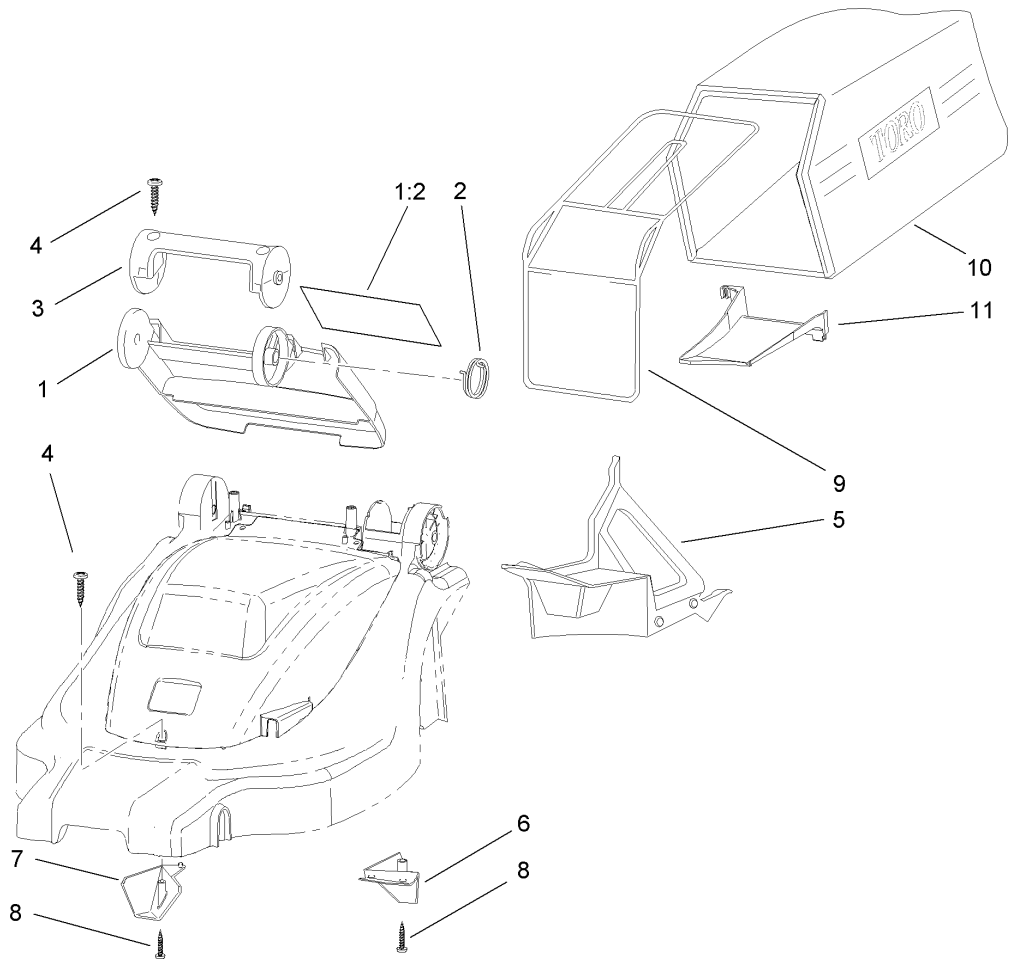
Motor and Blade Assembly

Ref	Part No.	Qty.	Description				
1	95-6764	1	Motor (Only On: 21070, 21071)				
1	95-6866	1	Motor, 1300W (Gb) (Only On: 21072)				
2	95-6723	4	Screw				
3	95-6548	1	Fan				
4	95-6754	1	Adaptor-Motor				
5	95-6624	1	Baffle-Motor				
6	95-6633	1	Capacitor				
7	95-6584	1	Clip-Capacitor				
8	95-6598	1	Screw-Mount				
9	95-6620	1	U-Clip				
10	95-6894	1	Shroud-Motor				
10:2	98-3206	1	Decal				
11	95-6732	1	Screw				
12	95-6583	1	Blade				
13	95-6767	1	Retainer-Blade				
14	95-6743	1	Screw-Blade				
15	95-6619	2	Nut-Snap On, Shroud				
16	95-6623	2	Screw				
18	95-6532	2	Screw				
19	95-6692	1	Release-Cable				



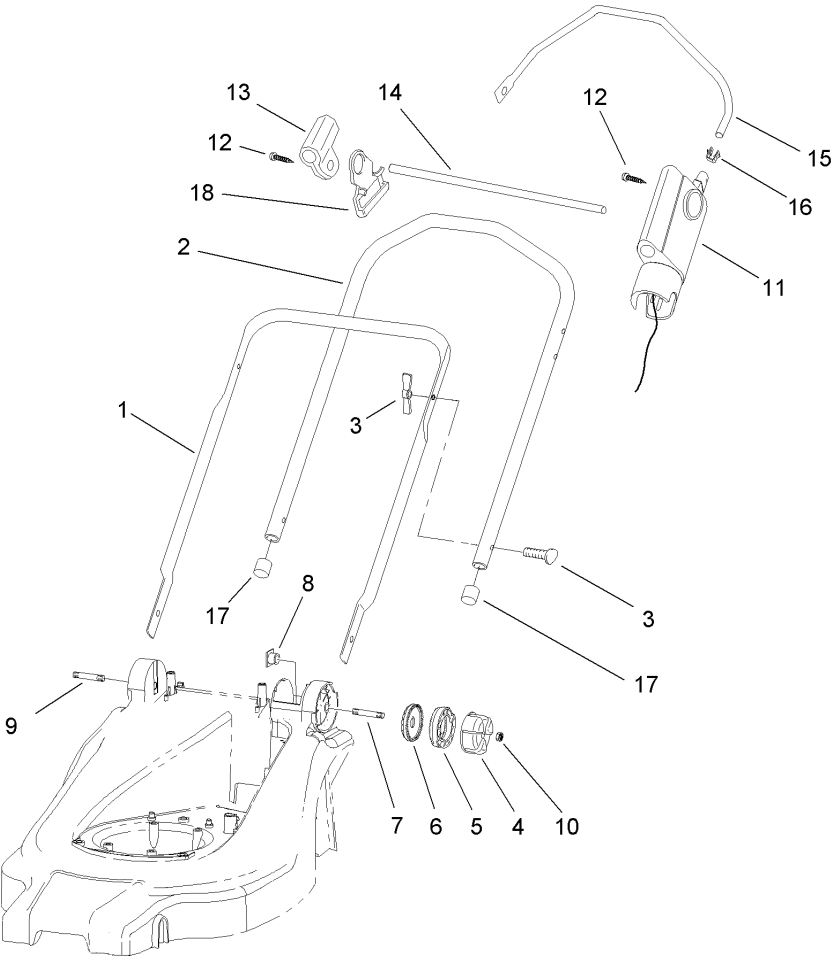
Chassis Assembly

Ref	Part No.	Qty.	Description				
1	95-6749	1	Housing				
2	95-6737	1	Axle-Rear				
3	95-6736	1	Axle-Front				
4	95-6665	3	Wheel ASM				
5	95-6543	3	Cover-Wheel				
6	95-6716	1	Cover-Wheel				
7	95-6544	4	Clamp-Spring, Wheel				
8	95-6888	1	Cover-Knob				
9	95-6562	1	Knob-HOC				
10	95-6526	1	Latch-HOC				
11	95-6564	1	Spring-HOC				
12	95-6791	1	Rod-HOC				
13	95-6741	1	Spacer				
14	95-6565	1	Nut-Push				
15	95-6709	1	Decal-HOC				
17	95-6525	1	Spring-Balance, HOC				
18	95-6670	1	Plate-Axle, Front				
19	95-6667	1	Plate-Axle, Rear				
20	95-6560	5	Screw				
21	95-6527	1	Decal-Recycler				
22	95-6666	1	Smartwheel ASM				



Bag and Recycling Assembly

Ref	Part No.	Qty.	Description				
1	95-6711	1	Door And Decal ASM				
1:2	95-6572	1	Decal-Safety				
2	95-6796	1	Spring-Rear, Door				
3	95-6513	1	Handle				
4	95-6698	3	Screw				
5	95-6579	1	Plug-Recycler				
6	95-6575	1	Kicker-Middle				
7	95-6861	1	Kicker-Front				
8	95-6560	3	Screw				
9	95-6552	1	Frame-Bag				
10	95-6550	1	Bag				
11	95-6554	1	Ramp-Bag				
●99	95-6770	1	Bushing-Rear, Door				



Handle Assembly

Ref	Part No.	Qty.	Description				
1	95-6886	1	Handle-Lower				
2	95-6516	1	Handle-Upper				
3	95-6718	2	Bolt And Screw Set				
4	95-6713	2	Knob-Adjusting				
5	95-6885	2	Adjusting-Disc				
6	95-6568	2	Disc-Holding				
7	95-6694	1	Stud-LH				
8	95-6740	2	Nut				
9	95-6777	1	Stud-RH				
10	95-6569	2	Nut				
11	95-6631	1	Switch ASM (Swiss) (Only On: 21071)				
11	95-6907	1	Switch ASM (Gb) (Only On: 21072)				
11	95-6605	1	Switch ASM (Only On: 21070)				
12	95-6598	1	Screw-Mount				
13	95-6596	1	Mount-Bail				
14	95-6607	1	Rod				
15	95-6606	1	Bail				
16	95-6602	1	Clamp-Bail				
17	95-6810	1	Cap-Handle				
18	95-6597	1	Holder-Cable				

NOTES

