



## Light Kit

For Sand/Infield Pro® 3040 and 5040 Traction Unit

Model No. 110–1314

### Installation Instructions

**Note:** Determine the left and right sides of the machine from the normal operating position.

#### Step

# 1

## Removing the Control Panel

### No Parts Required

#### Procedure

1. Disconnect the battery cables from the battery.
2. Remove the 3 screws securing the control panel to the fuel tank.

**Note:** Wrap the steering column with tape or paper to prevent it from getting scratched when raising the control panel.

3. Slide the control panel up the steering column.
4. Unplug the ignition switch behind the control panel.
5. Remove the 4 bolts and nuts securing the throttle and choke to the control panel.

#### Step

# 2

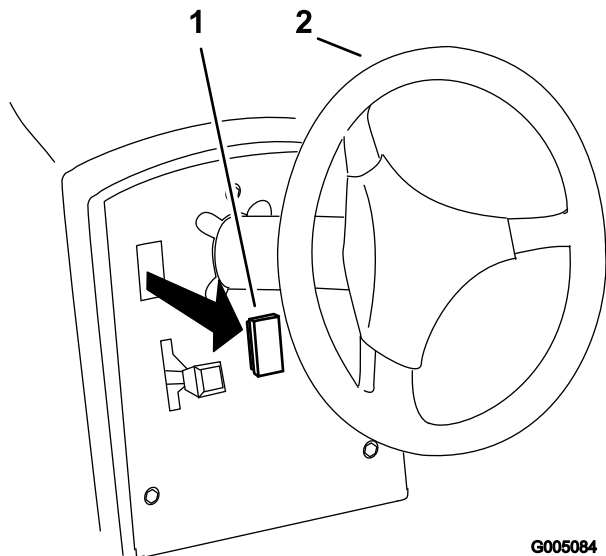
## Installing the Light Kit

### Parts needed for this step:

2	Self tapping bolt
2	Light
1	Wire harness
1	Switch
1	Formed light bracket
5	Cable tie
2	Bolt (5/16 x 3/4 inch)
1	Light bracket
1	Fuse
1	R-clamp

#### Procedure

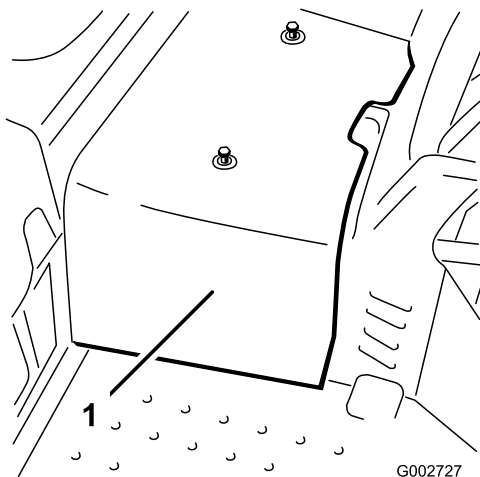
1. Remove the plug from the hole in the control panel which is designated for the light switch (Figure 1).
2. Plug the light switch into the panel hole (Figure 3).



**Figure 1**

1. Light switch plug      2. Steering wheel

3. Disconnect and remove the center shroud from the frame (Figure 2).



**Figure 2**

1. Center shroud

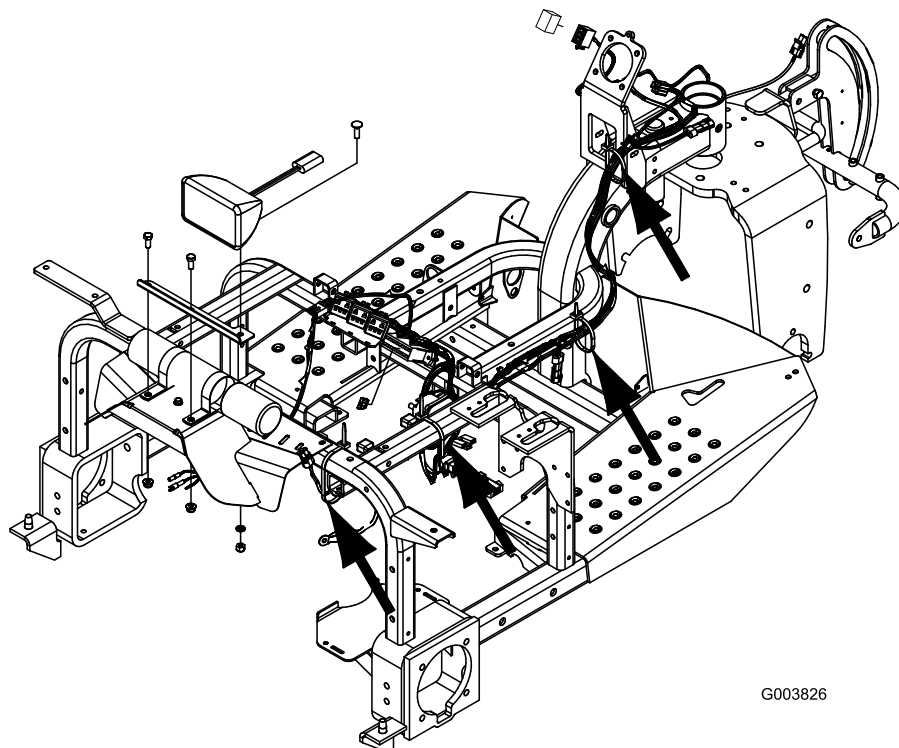
4. Plug the wire harness connector into the switch (Figure 3).
5. Starting at the control panel area, route the short end of the wire harness forward to the front wheel castor fork through the tank mounting plate bottom hole (Figure 3).
6. Insert a R-clamp onto the wire harness (Figure 3).
7. Mount the light bracket as follows:
  - If the machine is not equipped with a front lift frame kit, mount the formed light

bracket and the R-clamp to the top of the front wheel castor with 2 thread forming screws as shown in Figure 3.

- If the machine is equipped with a front lift frame kit, remove the 2 bolts and nuts securing the hitch frame to the hitch frame bracket. Using the same fasteners, mount the formed light bracket, R-clamp and hitch frame to the hitch frame bracket as shown in Figure 3.

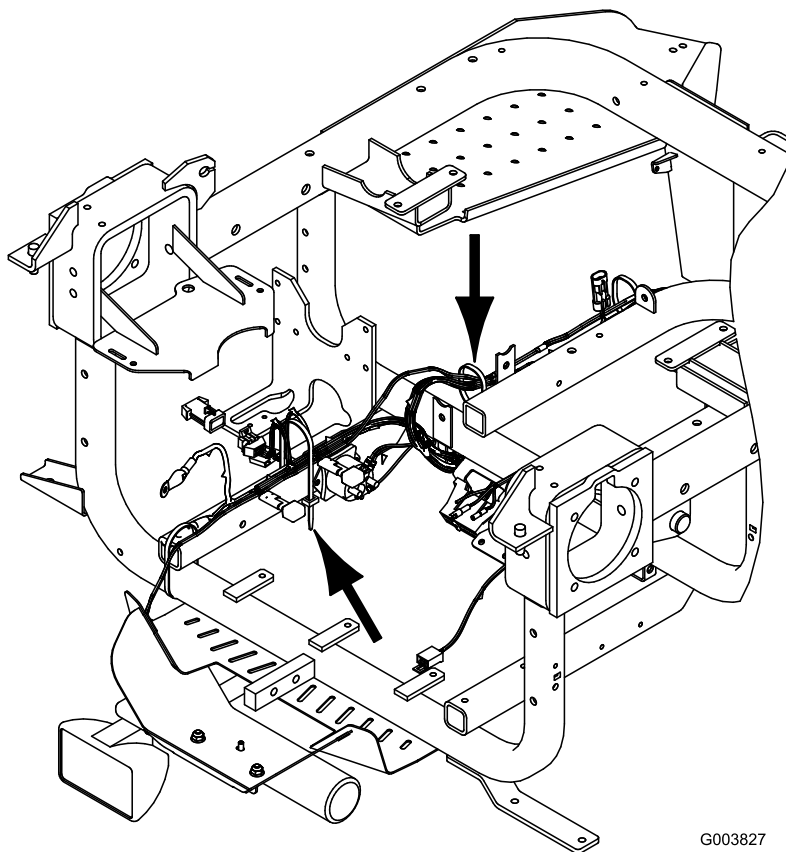
8. Mount the light assembly to the light bracket with a carriage bolt and lock nut (Figure 3).
9. Plug the wire harness connector into the light assembly connector (Figure 3).
10. Route the long end of the wire harness along the frame tubes to the rear of the machine. Route as shown in Figure 3 and Figure 5 and follow the machines existing wire harness. Make sure the harness is not in contact with any sharp, hot or rotating components.
11. Remove the 2 bolts and nuts securing the manual tube mounting clamps to the rear cover (Figure 3).
12. Loosely mount the rear light bracket and the manual tube clamps to the rear cover with 2 new bolts and the nuts previously removed. Position the bracket as shown in Figure 3.
13. Mount the light assembly to the light bracket with a carriage bolt and lock nut (Figure 3).
14. Adjust the light bracket and tighten the 2 bolts and nuts.
15. Plug the wire harness connector into the light assembly connector.
16. Secure the wire harness to the frame tubes with the cable ties at the locations shown in Figure 4 and Figure 5. One of the cable ties should connect the harness to the frame tube under the rear cover.
17. Install a 10 amp fuse into the third slot from the left in the fuse block (Figure 3).
18. Plug the light kit wire harness connector into the machines main wire harness (Figure 3).
19. Install the control panel.
20. Install the center shroud.





G003826

**Figure 4**



G003827

**Figure 5**

View is from under the traction unit.

**Step**

**3**

## Reading/Storing the Documentation

### Parts needed for this step:

1	<i>Installation Instructions</i>
1	<i>Parts Catalog</i>

### Procedure

1. Read the documentation.
2. Store the documentation in a safe place.







**Count on it.**