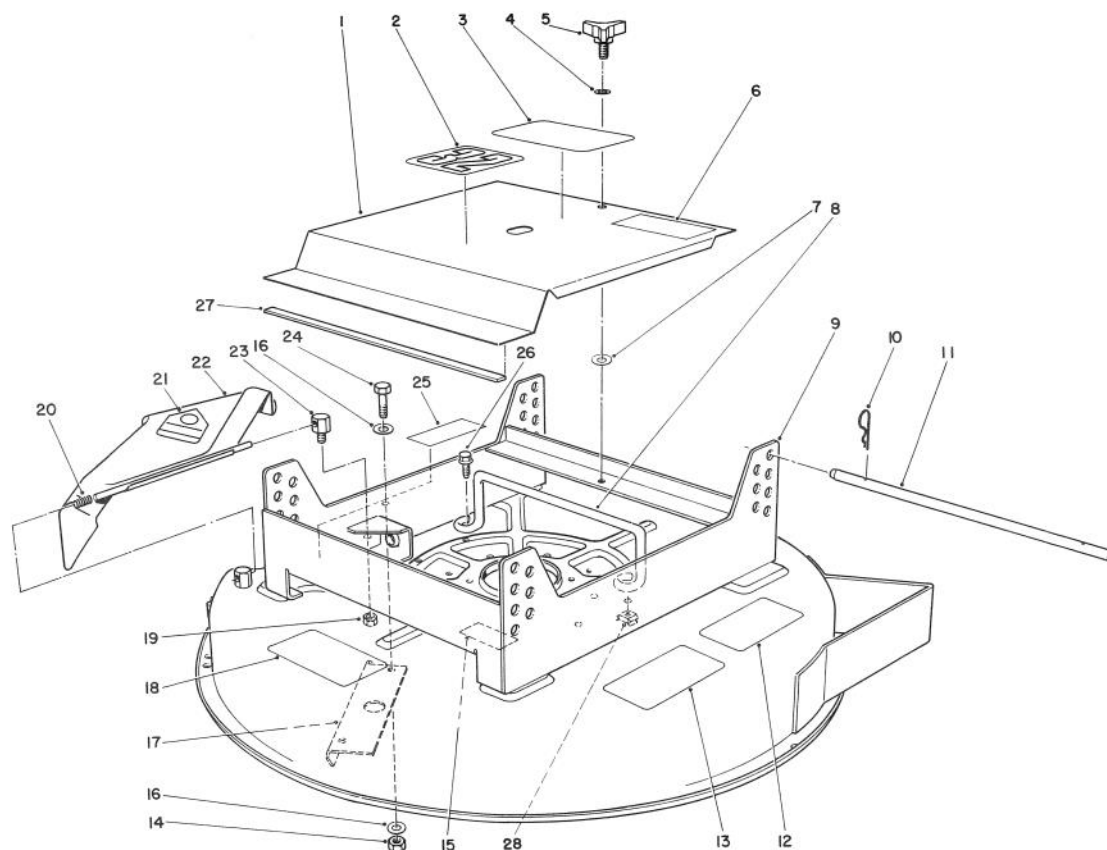


TORO®

MODEL NO. 30133-1000001 & UP

PARTS CATALOG

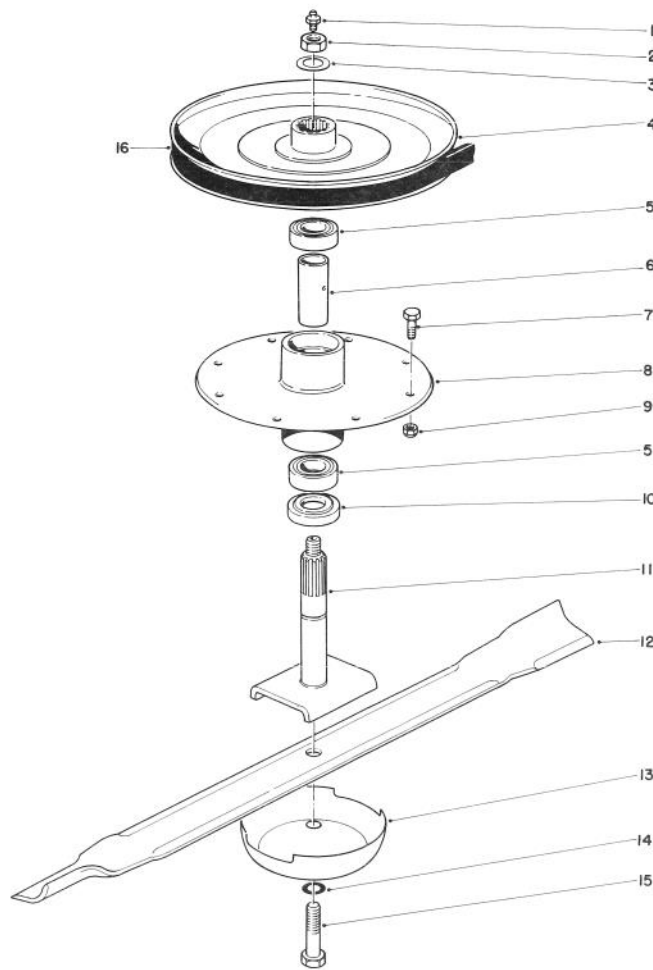
32" CUTTING UNIT WIDE AREA MOWER



T-0621A

CUTTING UNIT ASSEMBLY

Ref. No.	Part No.	Description	No. Used	Ref. No.	Part No.	Description	No. Used
1	67-6150	Cover (Incl. Ref.#2-7 & 27)	1	15	67-5360	Decal - Shield Missing	1
2	67-6170	Decal - 32"	1	16	3256-23	Washer - Flat	4
3	74-2080	Decal - Proline	1	17	44-5720	Baffle - Deck	1
4	3256-24	Washer - Flat	1	18	66-1340	Decal - Danger	1
5	27-4571	Knob - Cover	1	19	32153-2	Nut - Lock	1
6	54-0910	Decal - Warning	1	20	28-8010	Spring	1
7	32151-72	Ring - Retaining	1	21	54-9220	Decal	1
8	74-0570	Guide - Belt	1	22	44-5930	Deflector Assembly (Incl. Ref. #21)	1
9	14-5079	Deck Assembly	1	23	28-7350	Post - Pivot Deflector	1
10	3290-355	Pin - Cotter	4	24	322-4	Screw - Hex. Hd. Cap	3
11	67-6140	Rod - Support	2	25	66-6380	Decal - Danger	1
12	42-6860	Decal - Height of Cut	1	26	3234-29	Screw - Hex. Hd. Flange	2
13	66-1330	Decal - Caution	1	27	67-6180	Strip - Magnetic	1
14	3296-29	Nut - Lock	3	28	3290-496	Nut - Clinch	2

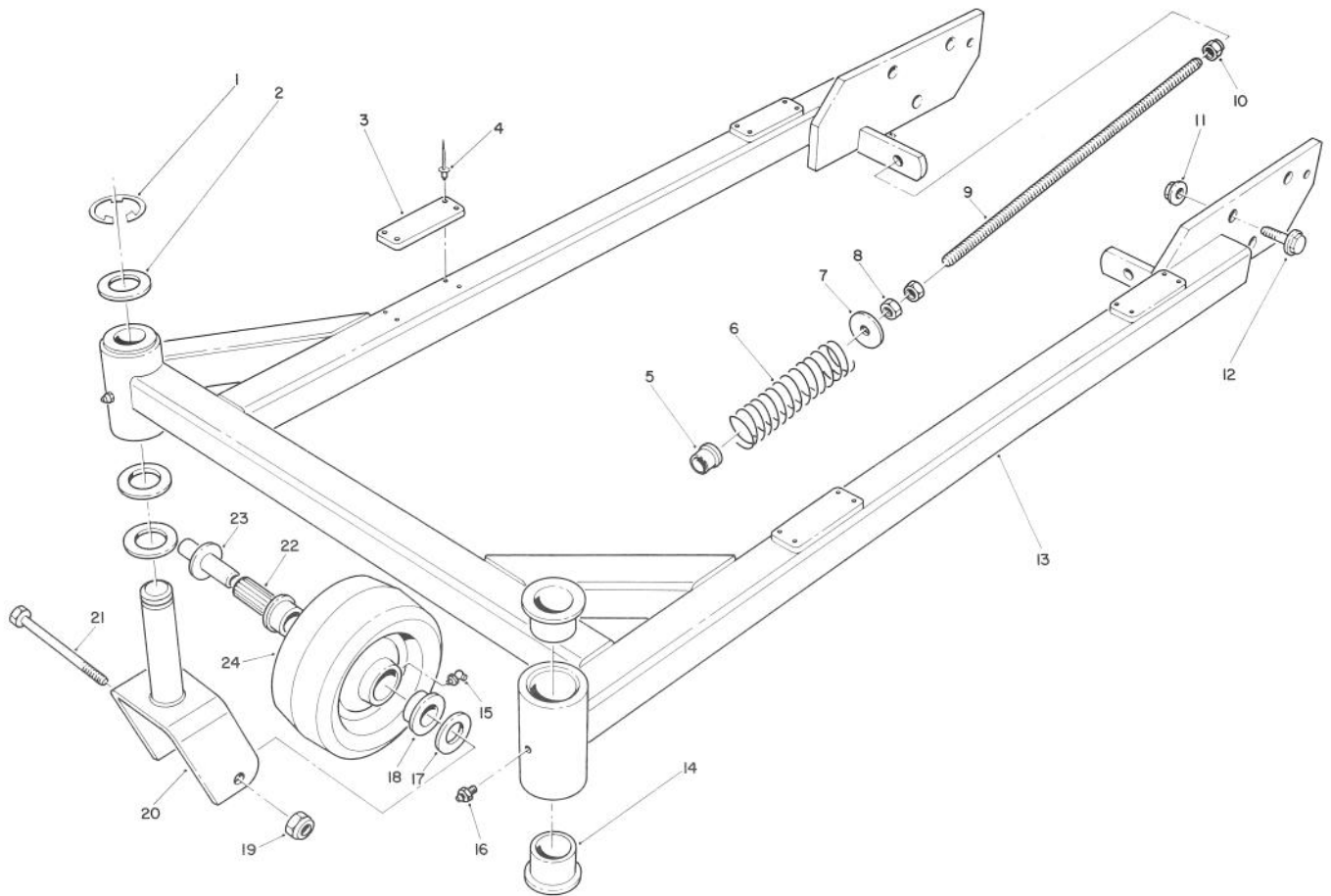


T-0622

DRIVE SPINDLE ASSEMBLY

Ref. No.	Part No.	Description	No. Used
1	302-5	Fitting - Grease	1
2	32152-6	Nut - Lock	1
3	3256-27	Washer - Flat	1
4	74-0580	Pulley	1
5	251-257	Bearing	2
6	67-6070	Spacer	1
7	322-4	Screw - Hex. Hd. Cap	8
8	67-6060	Housing - Spindle	1

Ref. No.	Part No.	Description	No. Used
9	3296-29	Nut - Lock	8
10	67-6080	Spacer	1
11	67-6040	Shaft - Spindle	1
12	33-4750	Blade	1
13	7-3522	Cup - Anti Scalp	1
14	3253-53	Washer - Lock	1
15	51-4060	Screw - Hex. Hd. Cap	1
16	67-6920	"V" Belt - Deck Drive	1



T-0997

CARRIER FRAME ASSEMBLY

Ref. No.	Part No.	Description	No. Used	Ref. No.	Part No.	Description	No. Used
1	32151-91	Ring - Retaining	2	14	28-9290	Bushing	4
2	3-6781	Washer - Flat	6	15	302-11	Fitting - Grease	2
3	74-0330	Pad - Rubber	4	16	302-5	Fitting - Grease	2
4	3296-24	Rivet - Pop	16	17	67-6570	Spacer - Wheel	4
5	256-156	Bushing	2	18	62-5580	Bushing	4
6	74-0290	Spring - Compression	2	19	32153-5	Nut	2
7	41-8440	Washer - Flat	2	20	74-0270	Fork - Castor	2
8	3218-5	Nut	4	21	325-18	Screw - Hex. Hd. Cap	2
9	74-0310	Shaft - Adjusting	2	22	63-8580	Roller - Bearing	2
10	3256-45	Nut - Lock	2	23	67-6220	Spanner	2
11	32128-27	Nut - Flange Lock	6	24	63-8400	Wheel Assembly - Castor (Incl. Ref. #15,18, & 22)	2
12	3234-6	Screw - Hex. Hd. Flange	6				
13	74-0080	Carrier Frame Assembly (Incl. Ref. #14)	1				

PRODUCT CHANGES

In an effort to make improvements available to TORO owners as quickly as possible, minor changes are incorporated into Toro's products from time to time that do not become immediately shown in the Parts Catalog. If such a change has been made in your unit, which is not reflected in your manual, see your TORO Distributor or his Authorized TORO Service Dealer for information and part numbers.

PRODUCT CHANGES

In an effort to make improvements available to TORO owners as quickly as possible, minor changes are incorporated into Toro's products from time to time that do not become immediately shown in the Parts Catalog. If such a change has been made in your unit, which is not reflected in your manual, see your TORO Distributor or his Authorized TORO Service Dealer for information and part numbers.

IDENTIFICATION AND ORDERING

MODEL AND SERIAL NUMBERS

The Lawnmower has two identification numbers; a model number and a serial number. The two numbers are stamped on a decal which is located on the rear of the housing. In any correspondence concerning the lawnmower, supply model and serial numbers to assure that correct information and replacement parts are obtained.

To order replacement parts from an Authorized TORO Service Dealer, supply the following information:

1. Model and serial number of the lawnmower.
2. Part number, description, and the quantity of part(s) desired.

NOTE: Do not order by reference number if a parts catalog is being used; use the PART NUMBER.

IDENTIFICATION AND ORDERING

MODEL AND SERIAL NUMBERS

The Lawnmower has two identification numbers; a model number and a serial number. The two numbers are stamped on a decal which is located on the rear of the housing. In any correspondence concerning the lawnmower, supply model and serial numbers to assure that correct information and replacement parts are obtained.

To order replacement parts from an Authorized TORO Service Dealer, supply the following information:

1. Model and serial number of the lawnmower.
2. Part number, description, and the quantity of part(s) desired.

NOTE: Do not order by reference number if a parts catalog is being used; use the PART NUMBER.

IDENTIFICATION AND ORDERING

MODEL AND SERIAL NUMBERS

The Lawnmower has two identification numbers; a model number and a serial number. The two numbers are stamped on a decal which is located on the rear of the housing. In any correspondence concerning the lawnmower, supply model and serial numbers to assure that correct information and replacement parts are obtained.

To order replacement parts from an Authorized TORO Service Dealer, supply the following information:

1. Model and serial number of the lawnmower.
2. Part number, description, and the quantity of part(s) desired.

NOTE: Do not order by reference number if a parts catalog is being used; use the PART NUMBER.

IDENTIFICATION AND ORDERING

MODEL AND SERIAL NUMBERS

The Lawnmower has two identification numbers; a model number and a serial number. The two numbers are stamped on a decal which is located on the rear of the housing. In any correspondence concerning the lawnmower, supply model and serial numbers to assure that correct information and replacement parts are obtained.

To order replacement parts from an Authorized TORO Service Dealer, supply the following information:

1. Model and serial number of the lawnmower.
2. Part number, description, and the quantity of part(s) desired.

NOTE: Do not order by reference number if a parts catalog is being used; use the PART NUMBER.

- ## IDENTIFICATION AND ORDERING
- ### MODEL AND SERIAL NUMBERS
- The Lawnmower has two identification numbers; a model number and a serial number. The two numbers are stamped on a decal which is located on the rear of the housing. In any correspondence concerning the lawnmower, supply model and serial numbers to assure that correct information and replacement parts are obtained.
- To order replacement parts from an Authorized TORO Service Dealer, supply the following information:
1. Model and serial number of the lawnmower.
 2. Part number, description, and the quantity of part(s) desired.
- NOTE:** Do not order by reference number if a parts catalog is being used; use the PART NUMBER.

IDENTIFICATION AND ORDERING

MODEL AND SERIAL NUMBERS

The Lawnmower has two identification numbers; a model number and a serial number. The two numbers are stamped on a decal which is located on the rear of the housing. In any correspondence concerning the lawnmower, supply model and serial numbers to assure that correct information and replacement parts are obtained.

To order replacement parts from an Authorized TORO Service Dealer, supply the following information:

1. Model and serial number of the lawnmower.
2. Part number, description, and the quantity of part(s) desired.

NOTE: Do not order by reference number if a parts catalog is being used; use the PART NUMBER.

COUNTRIES OTHER THAN THE UNITED STATES OR CANADA

Customers who have purchased TORO products exported from the United States or Canada should contact their Toro Distributor (Dealer) to obtain guarantee policies for your country, province or state. If for any reason you are dissatisfied with your Distributor's service or have difficulty obtaining guarantee information, contact the TORO importer. If all other remedies fail, you may contact us at The Toro Company.

COUNTRIES OTHER THAN THE UNITED STATES OR CANADA

Customers who have purchased TORO products exported from the United States or Canada should contact their Toro Distributor (Dealer) to obtain guarantee policies for your country, province or state. If for any reason you are dissatisfied with your Distributor's service or have difficulty obtaining guarantee information, contact the TORO importer. If all other remedies fail, you may contact us at The Toro Company.

COUNTRIES OTHER THAN THE UNITED STATES OR CANADA

Customers who have purchased TORO products exported from the United States or Canada should contact their Toro Distributor (Dealer) to obtain guarantee policies for your country, province or state. If for any reason you are dissatisfied with your Distributor's service or have difficulty obtaining guarantee information, contact the TORO importer. If all other remedies fail, you may contact us at The Toro Company.

[illegible]