



Blower and Drive Kit

For 52in E-Z Vac® Bagger for Z400 and Z500 Series Z Master® Mowers

Model No. 78537—Serial No. 260000001 and Up

Installation Instructions

Note: Determine the left and right sides of the machine from the normal operating position.

Loose Parts

Use the chart below to verify that all parts have been shipped.

Step	Description	Qty.	Use
1	No parts required	—	Verify an existing pivot tube.
2	No parts required	—	Prepare the mower and remove the belt cover.
3	No parts required	—	Remove the existing anti-scalp roller and bracket.
4	Pulley assembly	1	Install the pulley assembly.
5	Pivot bracket Metal template Bolt (3/8 x 1 inch) Locknut (3/8 inch)	1 1 3 3	Install the pivot bracket.
6	Blower assembly Bagger belt Blower belt cover	1 1 1	Install the blower, bagger belt, spring, and belt cover.

Step

1

Verifying an Existing Pivot Tube

No Parts Required

Procedure

If your mower has a pivot tube as shown in Figure 1, then proceed to Step 6 and the Operator's Manual to install the blower assembly.

Note: Do not remove the existing pivot tube.

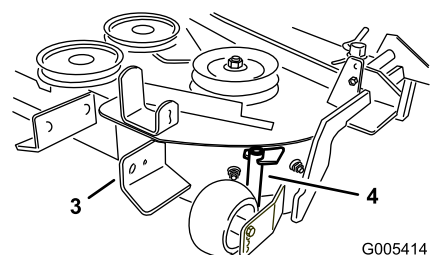
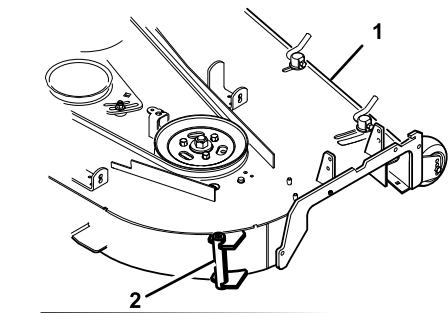


Figure 1

1. Z400 mower deck
2. Pivot tube

3. Z500 mower deck
4. Pivot tube

Step 2

Preparing the Mower and Remove the Belt Cover

No Parts Required

Procedure

Perform the following procedure to prepare the mower for attaching the blower and finishing kit.

1. Disengage the PTO, move the motion control levers to the neutral locked position and set the parking brake.
2. Stop the engine, remove the key, and wait for all moving parts to stop before leaving the operating position.
3. Repair all bent or damaged areas of mower deck and replace any missing parts.
4. Clean the mower of any debris on the deck or rear part of the mower to ease installation.

Note: Clean the area around the belt cover before removing.

5. Unlatch and remove the right belt cover. Save this hardware.
6. Store the right belt cover for later use. If the bagger blower and pulley is removed it can be reused.

1. Remove the anti-scalp roller from the bracket by loosening and removing the flange nut (3/8 inch) and axle bolt (3/8 x 4-1/2 inch) as shown in Figure 2.
2. Remove the three carriage bolts (3/8 x 3/4 inch) and flange nuts (3/8 inch) securing the bracket to the mower (Figure 2). Save the fasteners for later use.
3. Remove the bracket and discard.

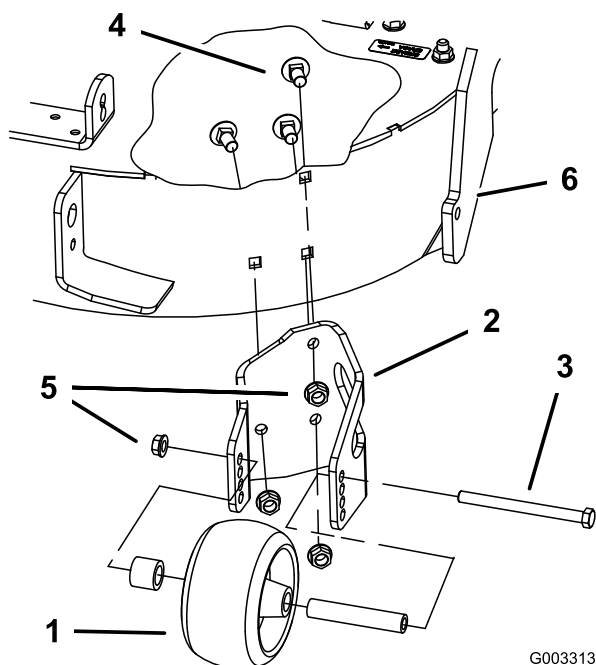


Figure 2

- | | |
|-----------------------------|------------------------------------|
| 1. Anti-scalp roller | 4. Carriage bolt, (3/8 x 3/4 inch) |
| 2. Anti-scalp bracket | 5. Flange nut, (3/8 inch) |
| 3. Bolt, (3/8 x 4-1/2 inch) | 6. Mower deck |

G003313

Step 3

Removing the Existing Anti-Scalp Roller and Bracket

No Parts Required

Procedure

Note: Clean the area around the right, rear anti-scalp wheel.

Step 4

Installing the Pulley Assembly

Parts needed for this step:

- | | |
|---|-----------------|
| 1 | Pulley assembly |
|---|-----------------|

Procedure

1. Lower the mower deck to the lowest height-of-cut position.

- Loosen, but do not remove, the tapping bolts on the existing mower deck pulley (Figure 3). There should be a 3/16 inch (5 mm) clearance between the bolt head and pulley.
- Align the new pulley assembly so that the openings fit over the pulley bolt heads (Figure 3).
- Turn the pulley to lock it into position (Figure 3).

Note: If the pulley does not turn, loosen the bolts to raise the bolt heads and allow the pulley to lock into position.

- After the new pulley assembly is in position, tighten the existing bolts to secure new pulley assembly.

Note: Torque the bolts to 23 ft-lb \pm 2 ft-lb (31 N·m \pm 3 N·m).

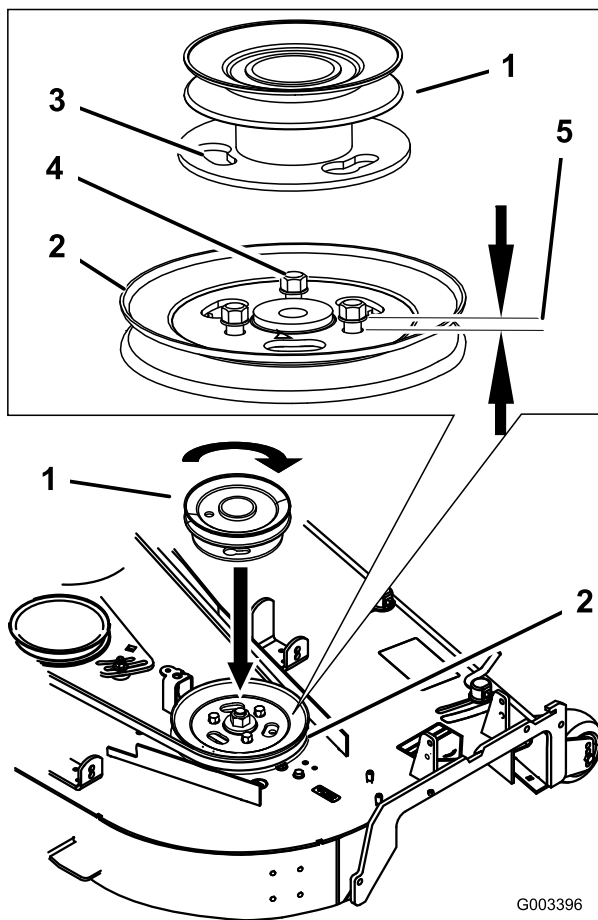


Figure 3

- Pulley assembly
- Mower deck pulley
- Locking slots
- Bolt heads
- 3/16 inch (5mm)

- Remove the belt cover support bracket from the mower deck (Figure 4).

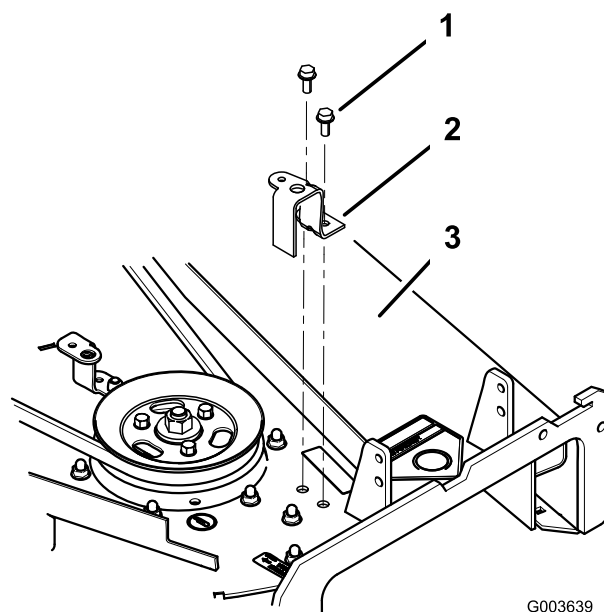


Figure 4

- Bolt
- Belt cover support bracket
- Mower deck

Step

5

Installing the Pivot Bracket

Parts needed for this step:

1	Pivot bracket
1	Metal template
3	Bolt (3/8 x 1 inch)
3	Locknut (3/8 inch)

Procedure

- Install the metal template, with the number 52 in it, to the mower deck with the previously removed carriage bolts and nuts using the existing holes in the mower deck (Figure 5).

Make sure the carriage bolts and nuts are tight and the template is tight against the mower deck.

- Center punch the new mower deck hole locations using the 3 holes in the template (Figure 5).
- Remove the metal template and drill three, 1/8 inch diameter, pilot holes with a sharp drill bit (Figure 5).

4. Drill three, 13/32 inch diameter, holes into the pilot holes with a sharp drill bit (Figure 5).
5. Remove part of the metal belt cover support on top of the mower. Refer to Figure 5 for the correct size and location to remove.

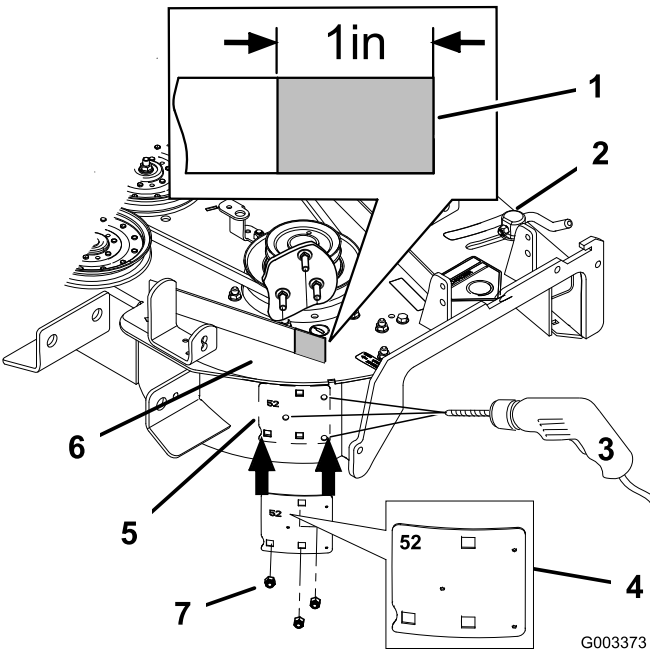


Figure 5

1. Cut 1 inch (25 mm) off the metal belt cover support here
 2. Mower deck
 3. Drill three, 1/8 inch pilot holes and 13/32 inch diameter holes, here
 4. Template with the number 52 in it
 5. Template location on mower deck here
 6. Carriage bolts
 7. Lock nuts
6. Install the new blower pivot assembly using the 3 bolts (3/8 x 1 inch) and 3 locknuts (3/8 inch) (Figure 6).
 7. Install the anti-scalp roller with the axle bolt (3/8 x 4-1/2 inches), flange nut (3/8 inch) (Figure 6).

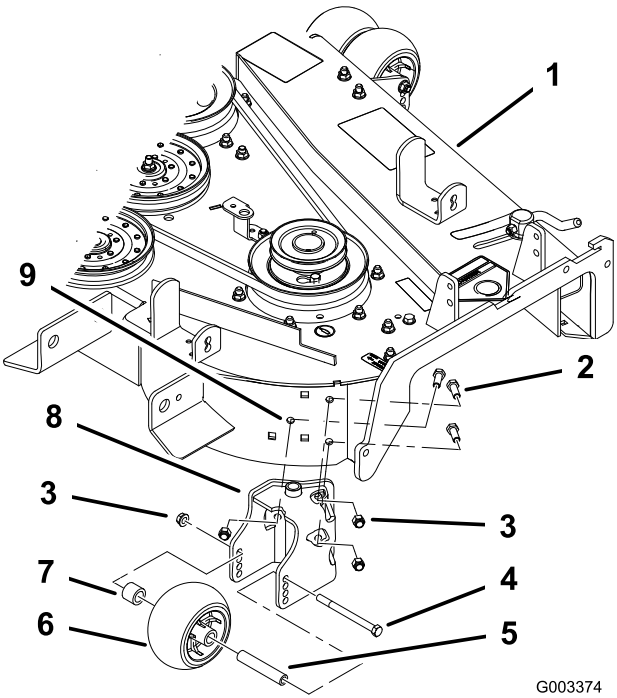


Figure 6

1. Mower deck
2. Bolt, (3/8 x 1 inch)
3. Locknut, (3/8 inch)
4. Bolt, (3/8 x 4-1/2 inch)
5. Spacer
6. Anti-scalp roller
7. Bushing
8. Blower pivot assembly
9. Drilled holes

Step 6

Installing the Blower Assembly, Bagger Belt, Spring, and Blower Belt Cover

Parts needed for this step:

1	Blower assembly
1	Bagger belt
1	Blower belt cover

Procedure

Refer to the bagger *Operator's Manual* for the correct procedure to install the blower, bagger belt, spring, and blower belt cover.