



This is a copy of the letter we are mailing to all registered owners of the affected products for service bulletin Vehicles 12-07. Please provide a copy of this letter to any customer in your area that is not included on the registration list sent to service managers (under separate email.)

INTERNATIONAL DISTRIBUTORS (incl. CANADA):

Product registration records are incomplete for your market. Please use the exact text from this letter, translated when appropriate, to inform your dealers and customers.

November 6, 2006

RE: Leaf Spring Clamp - Rework

UNITS AFFECTED:

Multi Pro® 5700

MODEL NUMBERS:

41581

41582

SERIAL NUMBERS:

240000101-250000327

260000101-260000497

Dear TORO® Multi Pro Owner,

This letter is being sent to advise you of an issue found on Multi Pro 5700 sprayers which, although unlikely, could result in loss of control of the unit. No personal injuries have been reported involving this issue. The hardware that retains the spring to the front axle may loosen or break, and if not repaired, could eventually cause the front axle to disconnect from the unit.

The Toro Company has decided to replace the Spring Clamp and all of the hardware that retains the front axle to the springs. Your local Toro Commercial Distributor has been informed of this rework through service bulletin Vehicles #12-07 dated November 6, 2006, and will contact you to arrange for the repair of your unit. Should you have any further questions please contact your local Toro Commercial Products Distributor.

A complete list of Toro Distributors can be found by visiting

www.toro.com/locator/index.html

We apologize for any inconvenience this may cause, and thank you for your assistance in resolving this issue and for being a loyal TORO customer.

Commercial Technical Assistance Center
Commercial Products Division
The TORO Company

SPRING PLATE REPLACEMENT INSTRUCTIONS

For Multi Pro 5700

1. Park the machine on a level work surface, apply the parking brake, turn the engine off and remove the key.
2. Block or chock the rear wheels to prevent the machine from moving.
3. Raise the front end and place jack stands under the front axle. (Figure 1)

Note: Do not place the jack stands under the spring plate or axle attachment hardware.



Danger

Do not remove axle hardware from both sides at the same time.

4. Remove the axle hardware and spring plate from one side of the front axle. (Figure 2)
5. Install Spring Plate (112-7822-03) using four Bolts (323-45) and four Lock Nuts (32153-2) as depicted in Figure 2.

Note: Apply Loctite 242 or equivalent to the bolt threads prior to installation.

6. Torque the bolts in two stages
 - a. Torque to 35 ft-lbs in the sequence described in Figure 3.
 - b. Torque to 53 ft-lbs in the sequence described in Figure 3. Double check that the torque has been attained by following the sequence twice.
7. Repeat steps 4 through 6 for the other side.
8. Remove jack stands and lower machine to the ground.
9. Adjust toe-in to 0 - 1/8 inch.
10. Test drive unit to verify the steering functions properly.

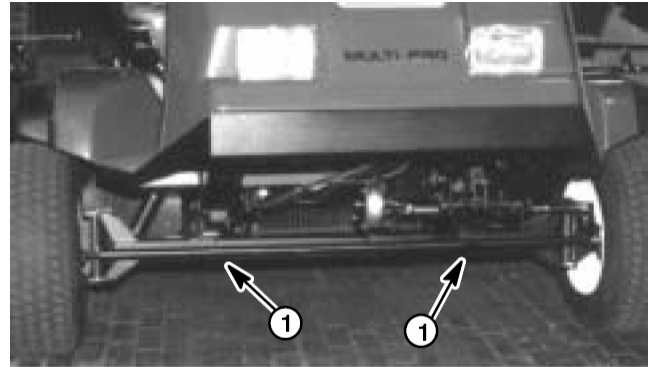


Figure 1

1. Front jacking points

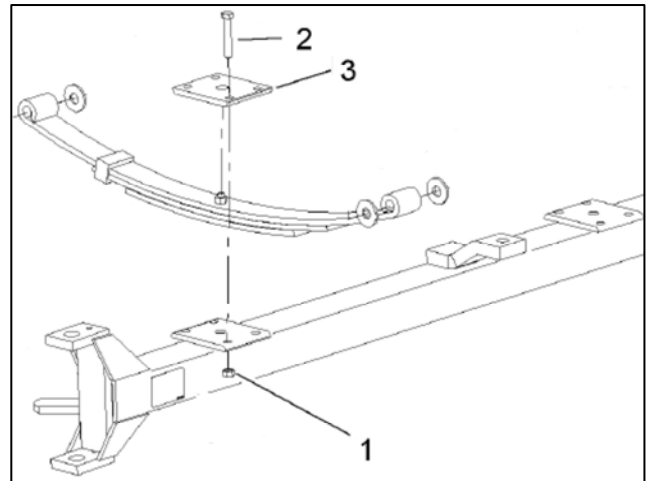


Figure 2

1. Lock Nut 2. Bolt 3. Spring Plate

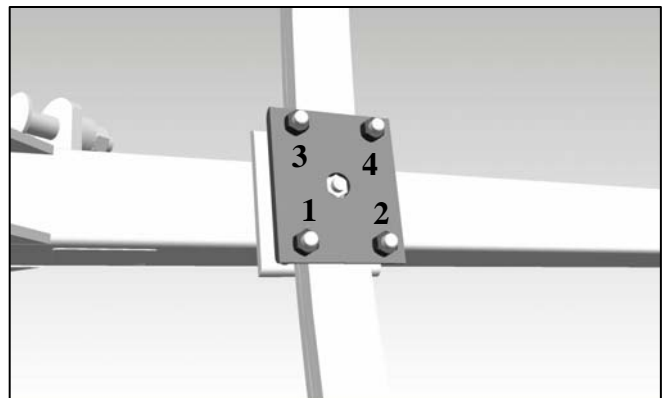


Figure 3

Torque sequence - cross pattern