



## **Bio-Diesel Fuel Filter Kit**

### **Groundsmaster® 580-D Traction Unit**

### **Models 30582 and 30583**

**Model No. 112-9130**

## **Parts Catalog**

### **Ordering Replacement Parts**

To order replacement parts, please supply the part number, the quantity, and the description of each part desired.

### **Understanding Reference Numbers**

Each Identified part in an illustration has a reference number. The reference number for a part also appears in the parts list, along with other information about the part.

This catalog uses two special reference number formats, one to indicate parts in a service assembly and another to indicate the quantity of a given part in an illustration.

### **Service Assembly Reference Numbers**

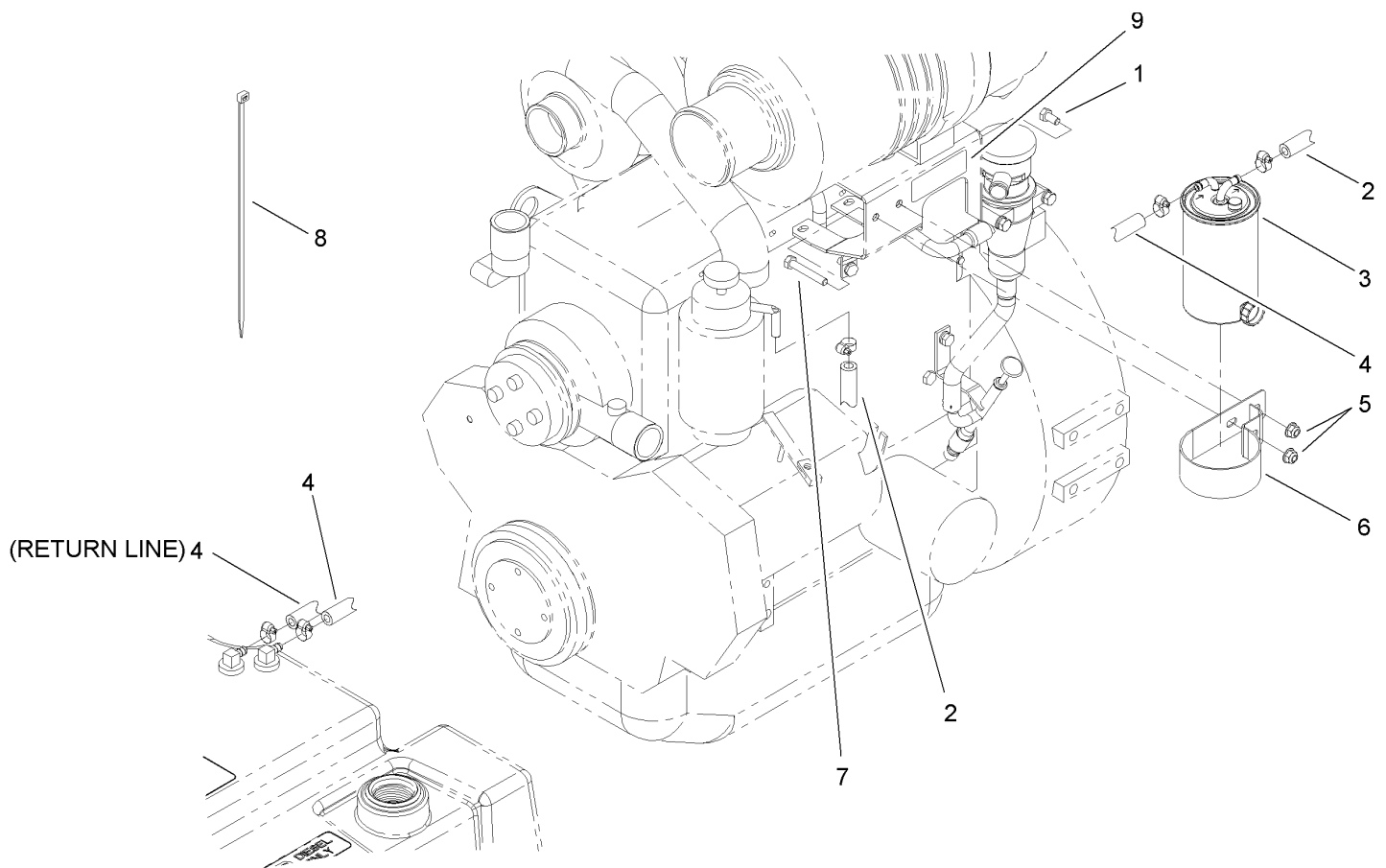
Parts in service assemblies have reference numbers in the form a:b. The a represents the reference number of the entire service assembly and the b represents a sequential number unique to each part within the service assembly.

For example, a wheel assembly might be identified by reference number 6, the tire by 6:1, the valve by 6:2, and the wheel by 6:3. When you order the assembly identified by reference number 6, you receive all parts identified by reference numbers 6:1, 6:2, and 6:3. However, you may also order any part individually. Reference numbers of this type appear in illustrations and in part lists.

### **Reference Numbers Indicating Quantity**

In an illustration, if a reference number indicates more than one part, the reference number has the form nX y. The n represents the quantity of the part, the X is the multiplication symbol, and the y represents the reference number.

For example, in an illustration, the reference number 2X 37 means that two of the parts identified by reference number 37 are indicated.



## Bio-Diesel Fuel Filter Kit Assembly

Ref	Part No.	Qty.	Description				
1	322-2	1	Screw-HH				
2	110-3258	1	Hose-Fuel				
3	112-9188	1	Element-Filter, Fuel				
4	110-6146	2	Hose-Fuel				
5	104-8300	2	Nut-Flange, NI				
6	110-8807	1	Bracket-Filter, Fuel				
7	322-10	1	Screw-HH				
8	3290-378	2	Tie-Cable				
9	112-9131	2	Decal-Fuel Filter Kit				