



Commercial Walk-Behind Mowers

For All Fixed Deck Mowers

Model No. All—Serial No. 270000001 and Up

Addendum

Note: Check if your machine has the grass deflector spring installed correctly. The grass deflector needs to have downward tension.

Installing the Grass Deflector Spring

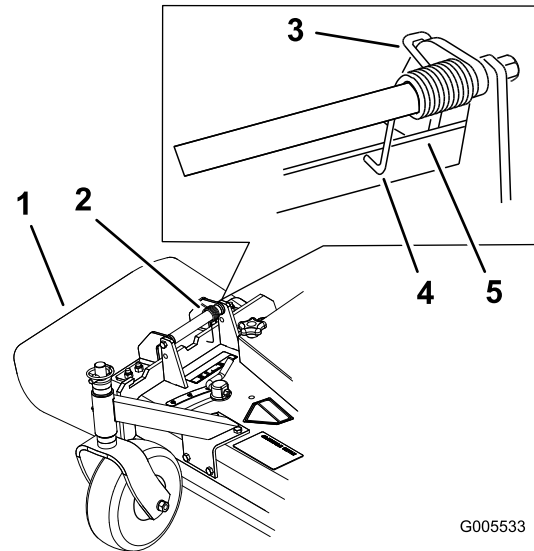


An uncovered discharge opening could allow the lawn mower to throw objects in the operator's or bystander's direction and result in serious injury or death. Also, contact with the blade could occur.

Never operate the lawn mower with the grass deflector removed unless you install a cover plate, a mulch plate, or a grass chute and catcher.

1. Make sure the **L** end of spring is installed behind the deck edge before installing the bolt as shown in Figure 1.
2. Place the **J** hook end of spring around grass deflector (Figure 1).

Important: The grass deflector must be free to rotate with downward tension. Lift the deflector up to the full open position and ensure that it rotates freely without binding into the full down position.



G005533

Figure 1

- | | |
|--------------------------------|--|
| 1. Grass Deflector | 4. L end of spring, place behind deck edge before installing bolt |
| 2. Spring | 5. Deck edge |
| 3. J hook end of spring | |