

# Foot-Assist Cutting Unit Lift Kit

## For Zero-Turn-Radius Riding Mowers

Model No. 79313

### Installation Instructions

## Installation

### Loose Parts

Use the chart below to verify that all parts have been shipped.

Step	Description	Qty.	Use
<b>1</b>	No parts required	–	Prepare the machine.
<b>2</b>	Offset lift plate, large Thrust washer Anti-seize lubricant Spacer Offset bracket, small	1 2 1 2 2	Install the brackets.
<b>3</b>	Pedal Flange bushing Flat washer (ID 17/32 inch) Cotter pin Lift rod Washer (ID 13/32)	1 2 2 3 1 2	Install the pedal.
<b>4</b>	No parts required	–	Complete the setup.

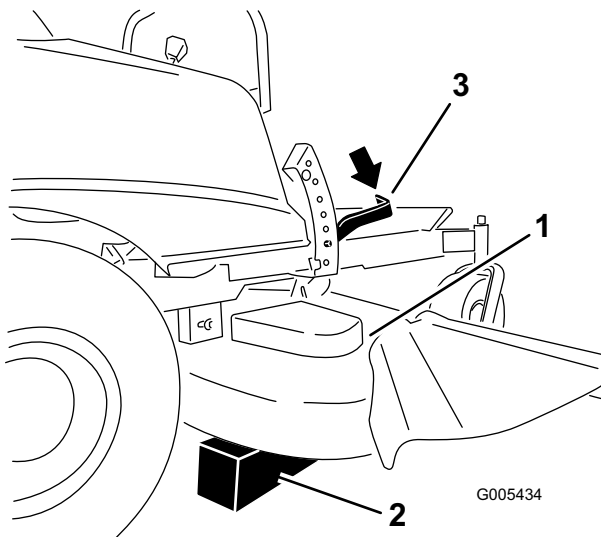
# Step 1

## Preparing the Machine

### No Parts Required

#### Procedure

1. Park the machine on a level surface and disengage the blade control switch.
2. Move the motion control levers outward to the park position, stop the engine, remove the key, and wait for all moving parts to stop before leaving the operating position.
3. Raise the deck to the highest cutting height position. Place blocks below the deck to support it at it's lowest, or next to lowest, cutting height position (Figure 1).



**Figure 1**

1. Mower deck
2. Block
3. Height-of-cut lever, lowered

4. Lower the deck until its weight is supported by the blocks (Figure 1). This will allow for the safe removal of the height of cut lift lever.

# Step 2

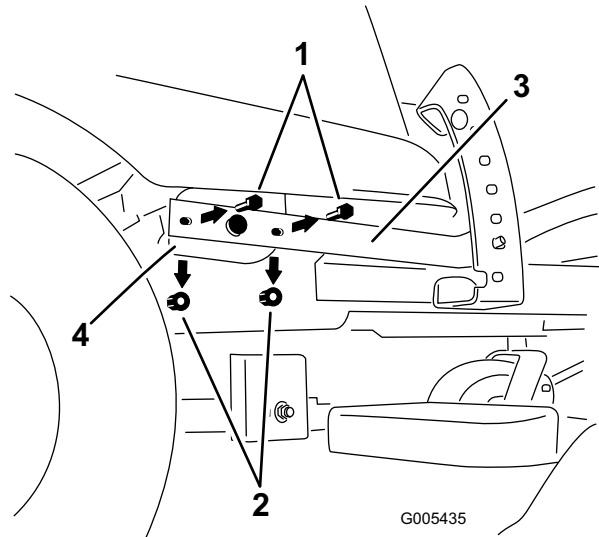
## Installing the Brackets

### Parts needed for this step:

1	Offset lift plate, large
2	Thrust washer
1	Anti-seize lubricant
2	Spacer
2	Offset bracket, small

#### Procedure

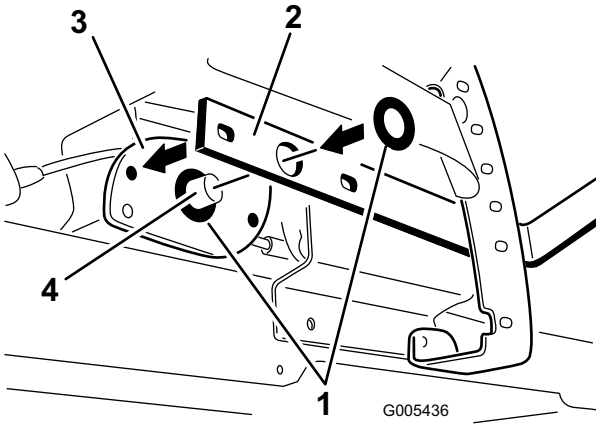
1. Under the right pod, locate the lift arm and lift lever (Figure 2).
2. Remove the fasteners securing the lift arm to the lift lever face (Figure 2). Retain the fasteners



**Figure 2**

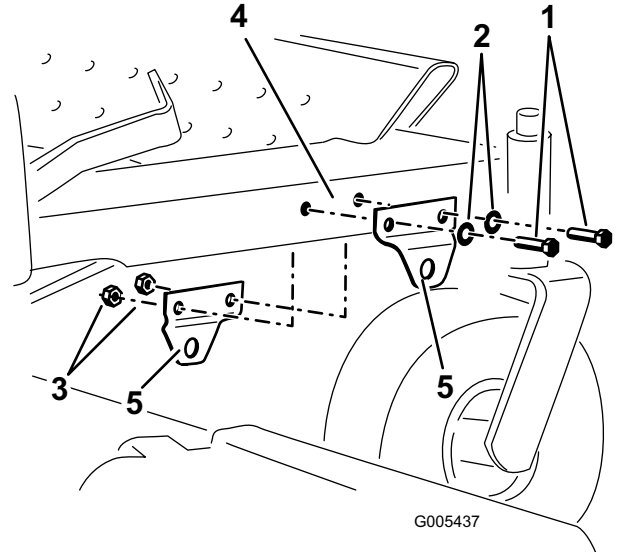
1. Bolt (5/16 x 1-1/4 inches)
2. Lock nut (5/16 inch)
3. Lift arm
4. Lift lever face

3. Locate the packet of anti-seize lubricant and two thrust washers in loose parts. Apply lubricant to both sides of each thrust washer.
4. Install a thrust washer over the pivot rod on the lift lever (Figure 3). Install the lift arm back to the lift lever face and washer. Cover the lift arm with another thrust washer.



**Figure 3**

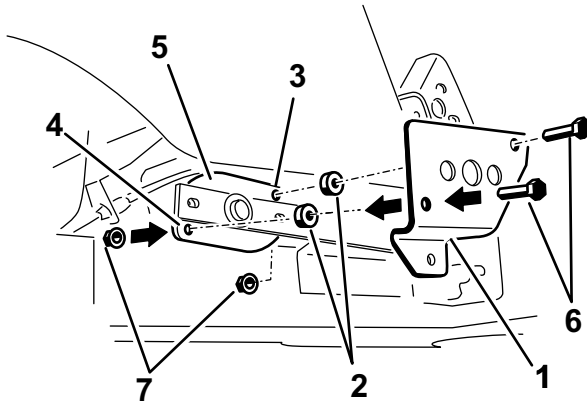
- |                  |                          |
|------------------|--------------------------|
| 1. Thrust washer | 3. Lift lever face       |
| 2. Lift arm      | 4. Pivot rod, lift lever |



**Figure 5**

- |                           |                          |
|---------------------------|--------------------------|
| 1. Bolt (5/16 x 2 inches) | 4. Frame                 |
| 2. Washer                 | 5. Offset bracket, small |
| 3. Lock nut (5/16 inch)   |                          |

5. Install the larger offset foot lift plate over the lift lever arm assembly and two spacers covering the upper and lower holes in the lift lever face (Figure 4). Install the bolts removed previously through the holes in the lift plate, the spacers and lift lever face. Secure the entire assembly with the lock nuts removed previously.



**Figure 4**

- |                   |                               |
|-------------------|-------------------------------|
| 1. Offset bracket | 5. Lift lever face            |
| 2. Spacer         | 6. Bolt (5/16 x 1-1/4 inches) |
| 3. Upper hole     | 7. Lock nut (5/16 inch)       |
| 4. Lower hole     |                               |

6. At the front, right side of the machine, remove the fasteners securing the front axle to the right side of the frame. Retain the fasteners.
7. Install the two smaller offset brackets to the frame as shown in Figure 5, but do not fully tighten the fasteners. Orientate the brackets so the offsets separate from one another.

## Step 3

### Installing the Pedal

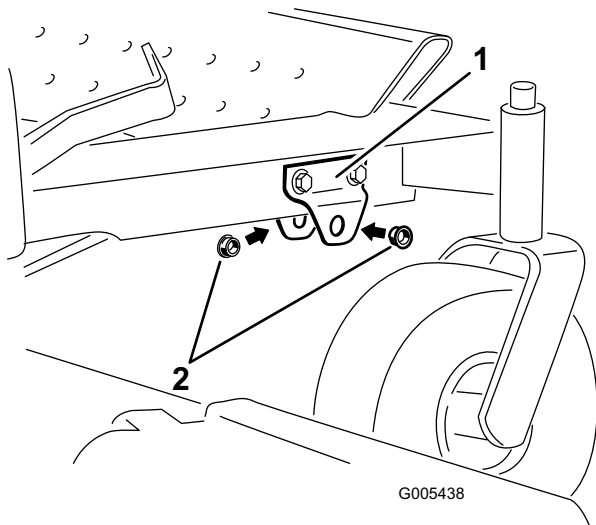
#### Parts needed for this step:

1	Pedal
2	Flange bushing
2	Flat washer (ID 17/32 inch)
3	Cotter pin
1	Lift rod
2	Washer (ID 13/32)

#### Procedure

1. Install a flange bushing into each hole in the bracket as shown in Figure 6. The flange of the bushing should be on the outside of each bracket.

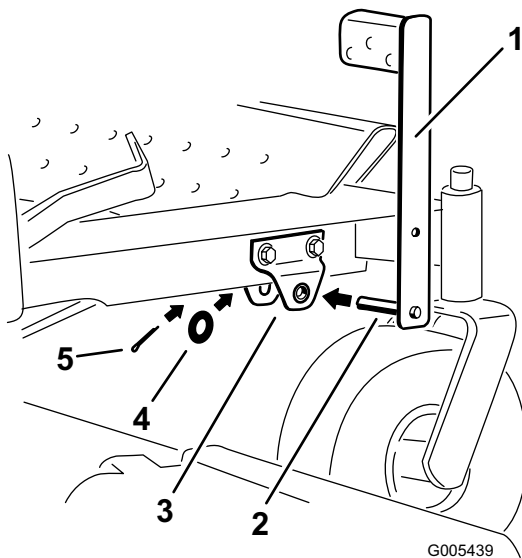
**Note:** You may need to tap the bushings into the bracket holes with a rubber mallet.



**Figure 6**

1. Bracket assembly
2. Flange bushing

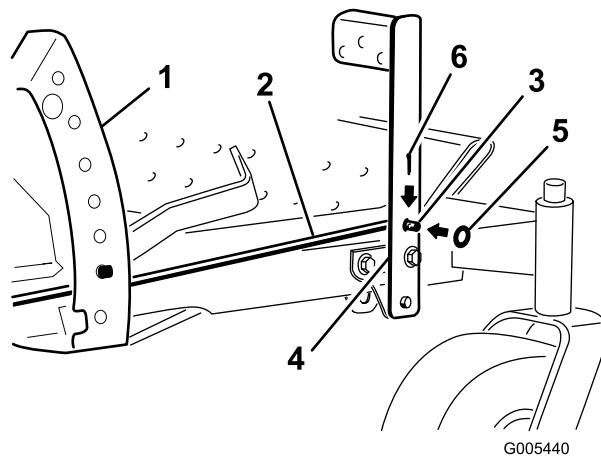
2. Insert the lift rod through the opening in the height-of-cut frame (Figure 8). Orientate the rod so that the bent ends of the rod face away from the machine.
3. Install the foot pedal to the front brackets (Figure 7), inserting the pin of the pedal into the bracket holes with the flange bushings.



**Figure 7**

1. Foot pedal
2. Pin, foot pedal
3. Front brackets
4. Washer
5. Cotter pin

4. At the front of the machine, install the bent end of the lift rod through the small hole in the pedal arm (Figure 8). Install a washer over the protruding end and secure it with a cotter pin.



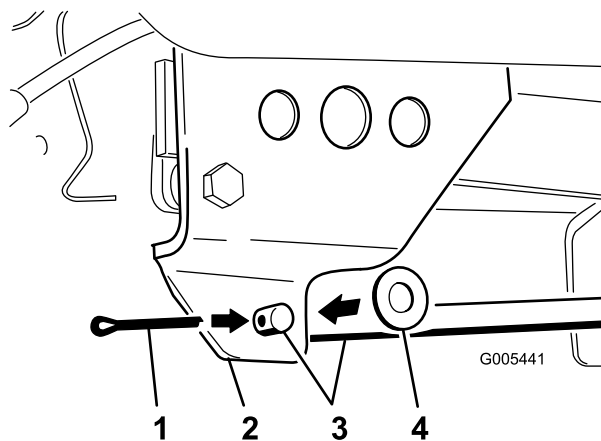
**Figure 8**

1. Height-of-cut frame
2. Lift rod
3. Bent end
4. Pedal arm
5. Washer
6. Cotter pin

5. Secure the pedal with 2 flat washers (ID 17/32 inch) and cotter pin (Figure 7).

**Note:** If you cannot install the cotter pin with both washers installed, remove and discard one of the washers.

6. Tighten the fasteners securing the bracket assembly (Figure 6).
7. Install the bent end of the lift rod from behind of the large offset bracket to the outside (Figure 9). Install a washer over the protruding end and secure it with a cotter pin.



**Figure 9**

1. Cotter pin
2. Offset bracket, large
3. Lift rod
4. Washer

Step

4

## Completing the Setup

### No Parts Required

#### Procedure

1. Raise the deck to the highest height of cut.
2. Remove the blocks supporting the deck.
3. Use the height of cut lever and foot pedal to raise and lower the deck, check to see if there is any binding. If so, check the installation.
4. Readjust as necessary.

## Operation

### Adjusting the Height of Cut

1. Enter the operator's position. Place a foot on the foot assist pedal and apply pressure.
2. While maintaining pressure on the pedal, pull inward and up on the height-of-cut lever and move it to the desired position.

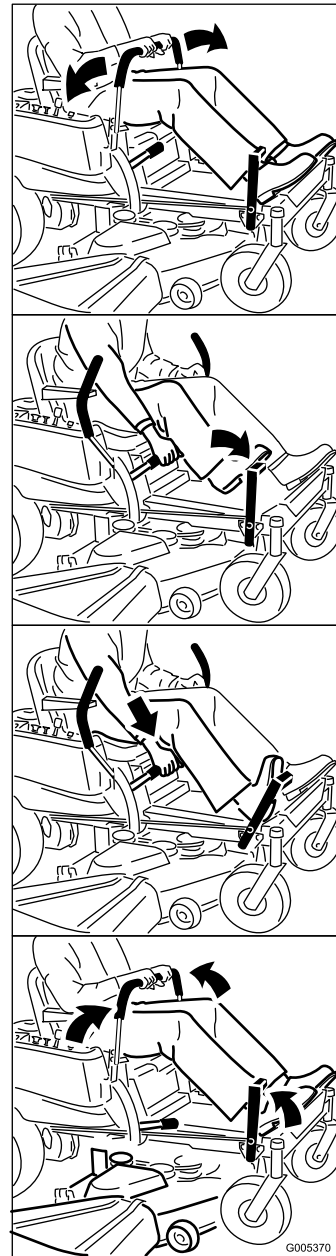
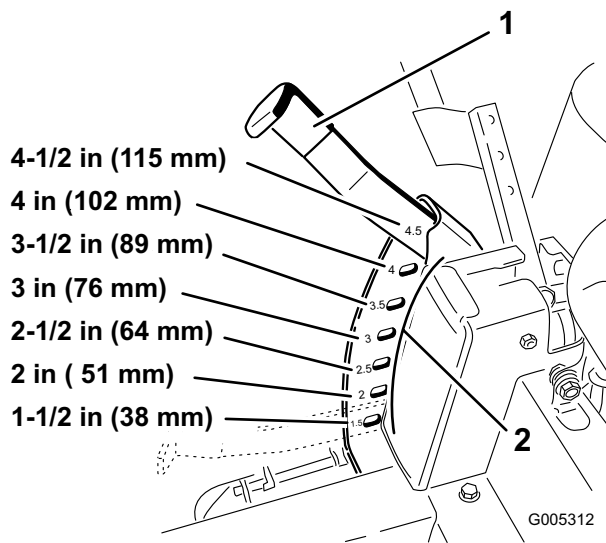


Figure 10

3. Raise the height-of-cut lever to the transport position, cutting height position 4.5 (also the 4-1/2 inch [115 mm]) (Figure 11).



**Figure 11**

1. Height-of-cut lever      2. Height-of-cut positions



