



# Titan Z4800

## Zero-Turn-Radius Riding Mower

Model No. 74812 - 270000001 and up.

## Parts Catalog

---

### Ordering Replacement Parts

To order replacement parts, please supply the part number, the quantity, and the description of each part desired.

### Understanding Reference Numbers

Each identified part in an illustration has a reference number. The reference number for a part also appears in the parts list, along with other information about the part.

This catalog uses two special reference number formats, one to indicate parts in a service assembly and another to indicate the quantity of a given part in an illustration.

### Service Assembly Reference Numbers

Parts in service assemblies have reference numbers in the form a:b. The a represents the reference number of the entire service assembly and the b represents a sequential number unique to each part within the service assembly.

For example, a wheel assembly might be identified by reference number 6, the tire by 6:1, the valve by 6:2, and the wheel by 6:3. When you order the assembly identified by reference number 6, you receive all parts identified by reference numbers 6:1, 6:2, and 6:3. However, you may also order any part individually. Reference numbers of this type appear in illustrations and in part lists.

### Reference Numbers Indicating Quantity

In an illustration, if a reference number indicates more than one part, the reference number has the form nX y. The n represents the quantity of the part, the X is the multiplication symbol, and the y represents the reference number.

For example, in an illustration, the reference number 2X 37 means that two of the parts identified by reference number 37 are indicated.

# Contents

Description	Page	Description	Page
Frame Assembly	3	Crankcase Assembly Briggs and Stratton 44K777-0123-E1	22
Motion Control and Brake Assembly	5	Fuel Line and Pump Assembly Briggs and Stratton 44K777-0123-E1	23
Seat Assembly	6	Carburetor Assembly Briggs and Stratton 44K777-0123-E1	24
Fuel Tank Assembly	7	Air Cleaner Assembly Briggs and Stratton 44K777-0123-E1	25
Engine Assembly	8	Governor Assembly Briggs and Stratton 44K777-0123-E1	26
Transmission Assembly	9	Flywheel Assembly Briggs and Stratton 44K777-0123-E1	27
RH Transmission Assembly No. 109-3371	10	Starter Assembly Briggs and Stratton 44K777- 0123-E1	28
LH Transmission Assembly No. 109-3372	12	Gasket Set Briggs and Stratton 44K777-0123- E1	29
48 Inch Deck Assembly	14	Carburetor Overhaul Kit Briggs and Stratton 44K777-0123-E1	30
48 Inch Deck Blade and Discharge Assembly	15	Attachments and Accessories List	31
Cutter Housing Assembly No. 109-6394	16		
Rubber Deflector Assembly No. 114-1651	17		
Electrical Assembly	18		
Cylinder Assembly Briggs and Stratton 44K777-0123-E1	19		
Cylinder Head Assembly Briggs and Stratton 44K777-0123-E1	20		
Crankshaft Assembly Briggs and Stratton 44K777-0123-E1	21		

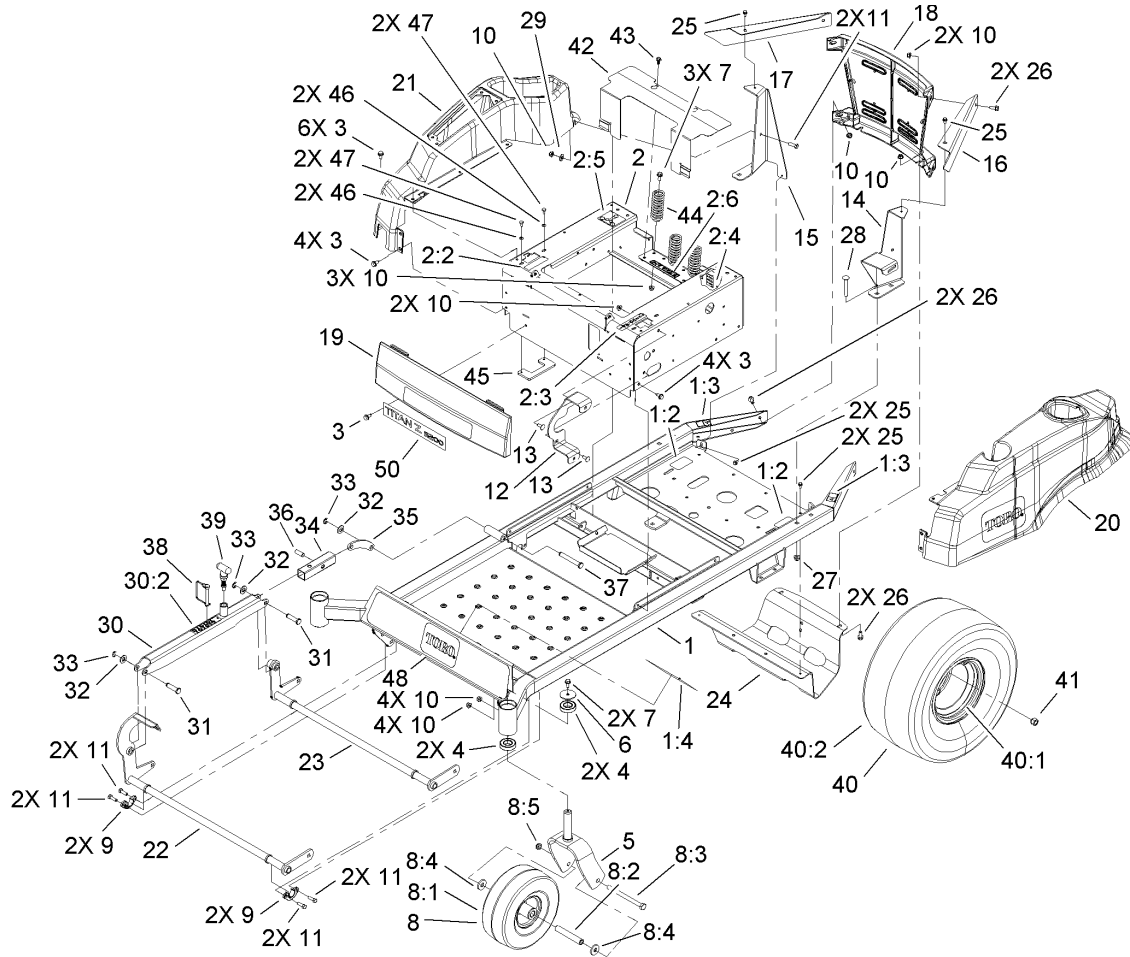
## Part Description Abbreviations

Part descriptions in this catalog may include the following abbreviations.

AR. .... as required	HYD. .... hydraulic
ASM. .... assembly	LH. .... left hand
BBC. .... blade brake clutch	NI. .... nylon insert
CARR. .... carriage	NPTF. .... national pipe thread fine
DEG. .... degrees	PFH. .... phillips flat head
EXT. .... external	PPH. .... phillips pan head
FH. .... flat head	PPHTF. .... phillips pan head thread forming
GA. .... gauge	PRH. .... phillips round head
HD. .... heavy-duty	PTH. .... phillips truss head
HF. .... hex flange	PTO. .... power-take-off
HH. .... hex head	RH. .... right hand
HHF. .... hex head flange	ROPS. .... roll-over protection system
HHFTF. .... hex head flange thread forming	SFH. .... slotted fillister head
HJ. .... hex jam	SHH. .... slotted hex head
HLH. .... hex lag head	SHWH. .... slotted hex washer head
HOC. .... height-of-cut	SPH. .... slotted pan head
HSBH. .... hex socket button head	SQH. .... square head
HSFH. .... hex socket flat head	SRH. .... slotted round head
HSH. .... hex socket head	STD. .... standard
HWH. .... hex washer head	TAP. .... self tapping
HWHTF. .... hex washer head thread forming	TTH. .... torx truss head

## Footnotes

- |   |  |
|---|--|
| ❶ Not illustrated                                 | ❷ Not serviced separately                            |
| ❸ Obtain from your local Briggs & Stratton dealer | ❹ Included in Carburetor Overhaul Kit (Ref. No. 121) |
| ❺ Included in Engine Gasket Set (Ref. No. 358)    | ❻ Included in Carburetor Gasket Set (Ref. No. 977)   |
| ❽ Included in Valve Gasket Set (Ref. No. 1095)    |  |

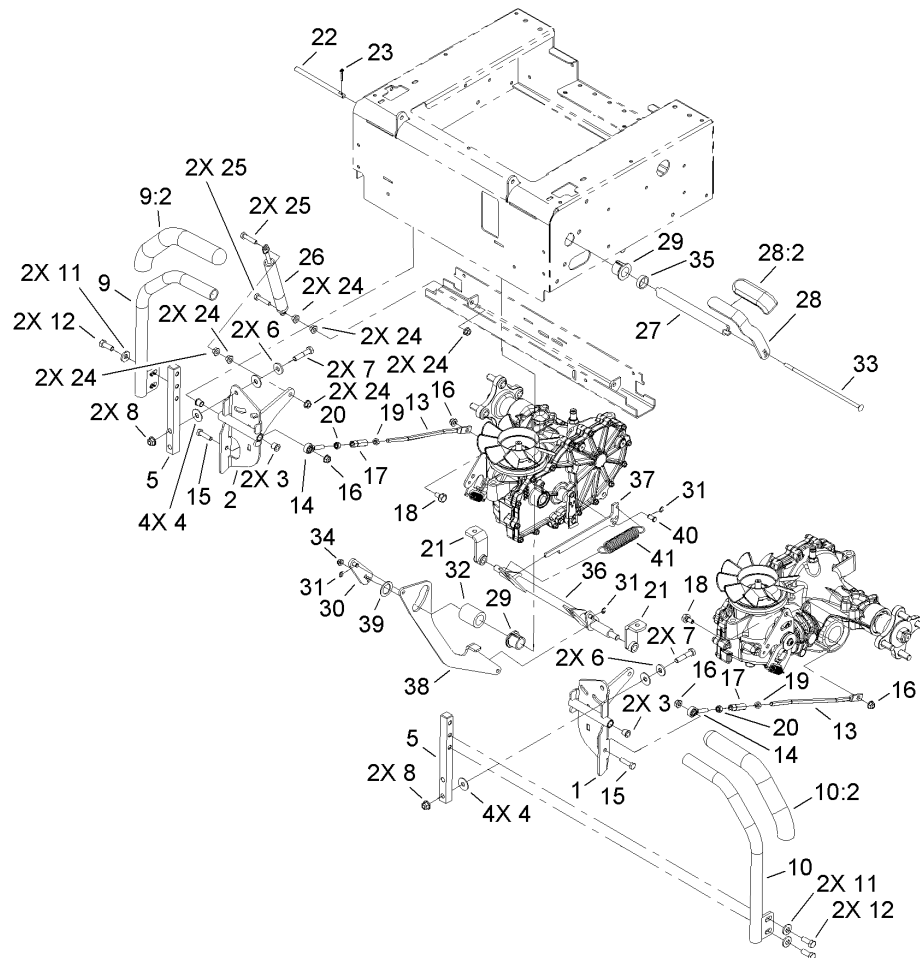


### Frame Assembly

Ref	Part No.	Qty.	Description
1	109-6257	1	Frame ASM
1:2	109-6008	2	Decal-Drive Release
1:3	106-5517	2	Decal-Surface, Hot
1:4	109-6013	1	Decal-Safety Warning
2	109-6404	1	Seat Box ASM
2:2	99-8936	1	Decal-Control, Motion
2:3	109-6009	1	Decal-Control, Brake
2:4	109-6011	1	Decal-Fuse Block
2:5	109-6014	1	Decal-Belt Routing
2:6	109-6210	1	Decal-Danger
3	32144-70	16	Screw-HWHTF
4	109-3678	4	Bearing-Ball
5	109-6218-01	2	Caster Fork ASM
6	109-3724	2	Washer
7	3234-47	5	Screw-HHF
8	109-6405	2	Caster Wheel ASM
8:1	105-1863	1	Wheel-Caster
8:2	104-3667	1	Spanner-Wheel
8:3	325-20	1	Screw-HH
8:4	92-2651	2	Washer
8:5	3296-45	1	Nut-Lock, NI
9	109-3667	4	Bearing-Flange
10	104-8300	21	Nut-Flange, NI
11	322-5	10	Screw-HH

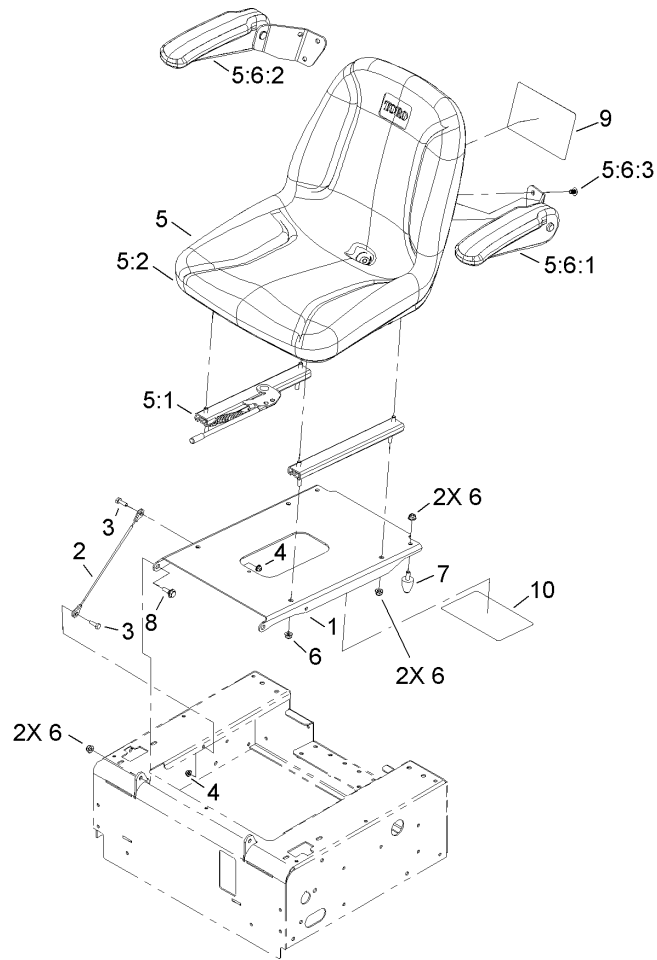
Ref	Part No.	Qty.	Description
12	109-6045-03	1	Bracket-Tank Mount
13	3230-23	2	Screw-CARR
14	109-6867-03	1	Bracket-Rear Tank, LH
15	109-3406-03	1	Bracket-Rear Console, RH
16	109-3381-03	1	Guard-Engine, LH
17	109-3391-03	1	Guard-Engine, RH
18	109-5444-03	1	Casting-Rear, Toro
19	109-5432	1	Panel-Front, Toro
20	109-5441	1	Fender-Toro, LH
21	109-5442	1	Fender-Toro, RH
22	109-3421-03	1	Front Shaft ASM
23	109-3422-03	1	Rear Shaft ASM
24	109-5392-03	1	Guard-Muffler
25	9266714	6	Screw-HWH
26	3234-5	6	Screw-HHF
27	104-8301	4	Nut-Flange, NI
28	3231-9	4	Screw-CARR
29	3256-3	2	Washer-Flat
30	109-6396	1	Height Adjust ASM
30:2	109-6010	1	Decal-Cut Height
31	109-5819	2	Pin-Clevis
32	3256-26	3	Washer-Flat
33	32120-47	3	Ring-Retaining, External
34	109-5822	1	Stop-Height Adjust





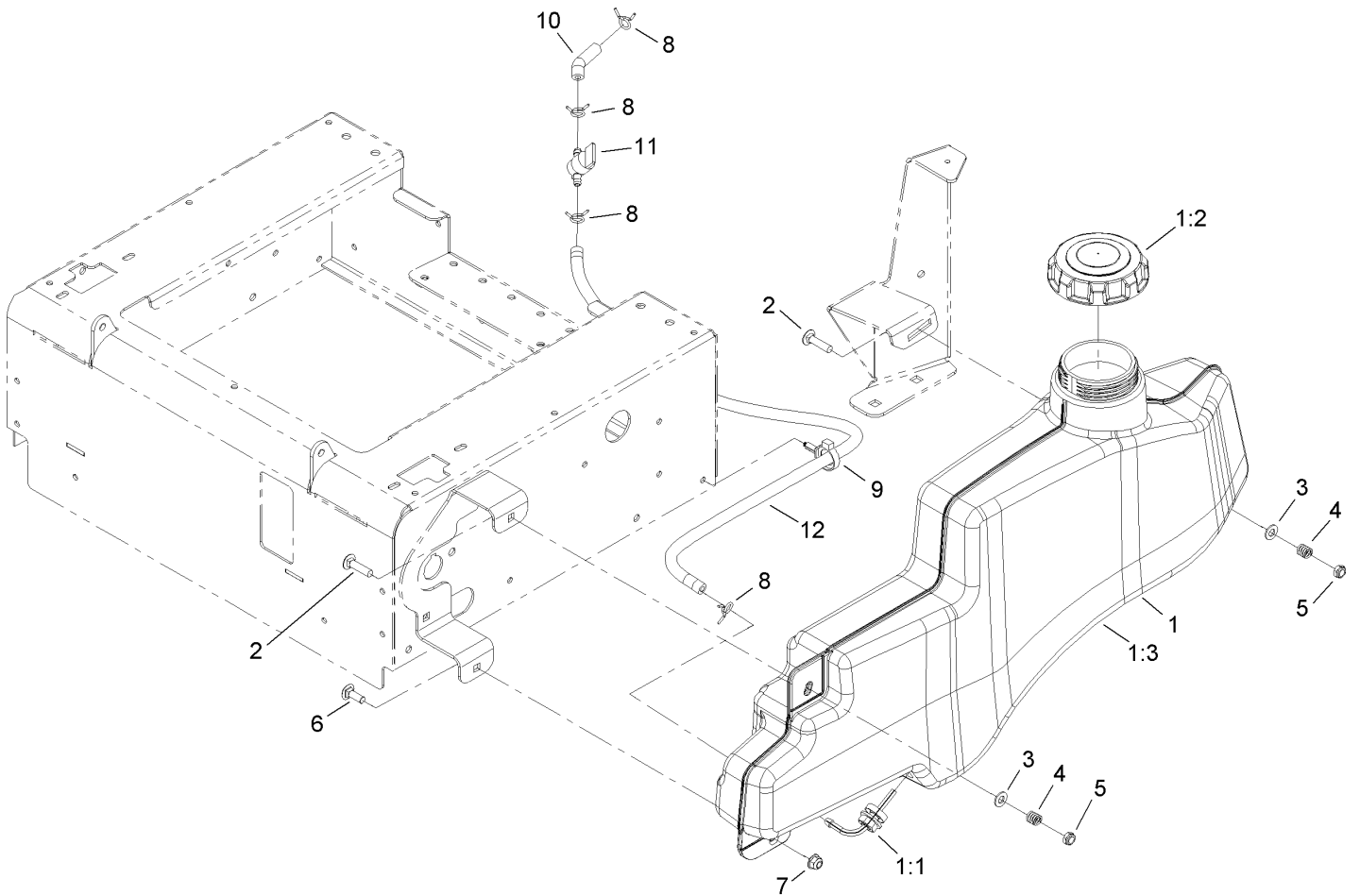
## Motion Control and Brake Assembly

Ref	Part No.	Qty.	Description	Ref	Part No.	Qty.	Description
1	109-6518	1	LH Motion Control Pivot ASM	23	3272-10	2	Pin-Cotter
2	109-6519	1	RH Motion Control Pivot ASM	24	32128-20	12	Nut-HF
3	103-9928	4	Bearing	25	1-403180	4	Screw-HH
4	52-2900	8	Washer-Plastic	26	109-5957	2	Damper-Motion Control
5	109-3689	2	Post-Lever Mount	27	109-5825	1	Tube-Brake Pivot
6	5-0838	4	Washer	28	109-5918	1	Lever ASM
7	323-9	4	Screw-HH	28:2	1-633268	1	Grip-Lever, Brake
8	104-8301	4	Nut-Flange, NI	29	107-7581	2	Bushing-Flange, Keyed
9	109-6197	1	RH Lever Grip ASM	30	109-5824	1	Bellcrank ASM
9:2	109-5192	1	Grip-Control Lever	31	701197	2	E-Ring
10	109-6202	1	LH Lever Grip ASM	32	109-5834	1	Spacer
10:2	109-5192	1	Grip-Control Lever	33	109-5868	1	Bolt-CARR
11	98-5975	4	Washer-Belleville	34	104-7201	1	Nut-HF
12	323-6	4	Screw-HH	35	109-5914	1	Spacer
13	109-3414	2	Rod-Steering	36	109-5828	1	Brake Shaft ASM
14	2411-53	2	Bearing-Rod End, LH	37	109-5832	2	Plate-Spring Anchor
15	322-6	2	Screw-HH	38	109-5833	1	Arm-Brake
16	104-8300	4	Nut-Flange, NI	39	99-4958	1	Spacer
17	109-3728	2	Nut-Rod Adjustment	40	1-808278	2	Pin-Clevis
18	37-8771	2	Bolt-Shoulder	41	1-603693	2	Spring-Extension
19	3220-2	2	Nut-Jam				
20	3220-20	2	Nut-Jam				
21	109-6220	2	Brake Pivot ASM				
22	109-3705	2	Pin-Control Pivot				



## Seat Assembly

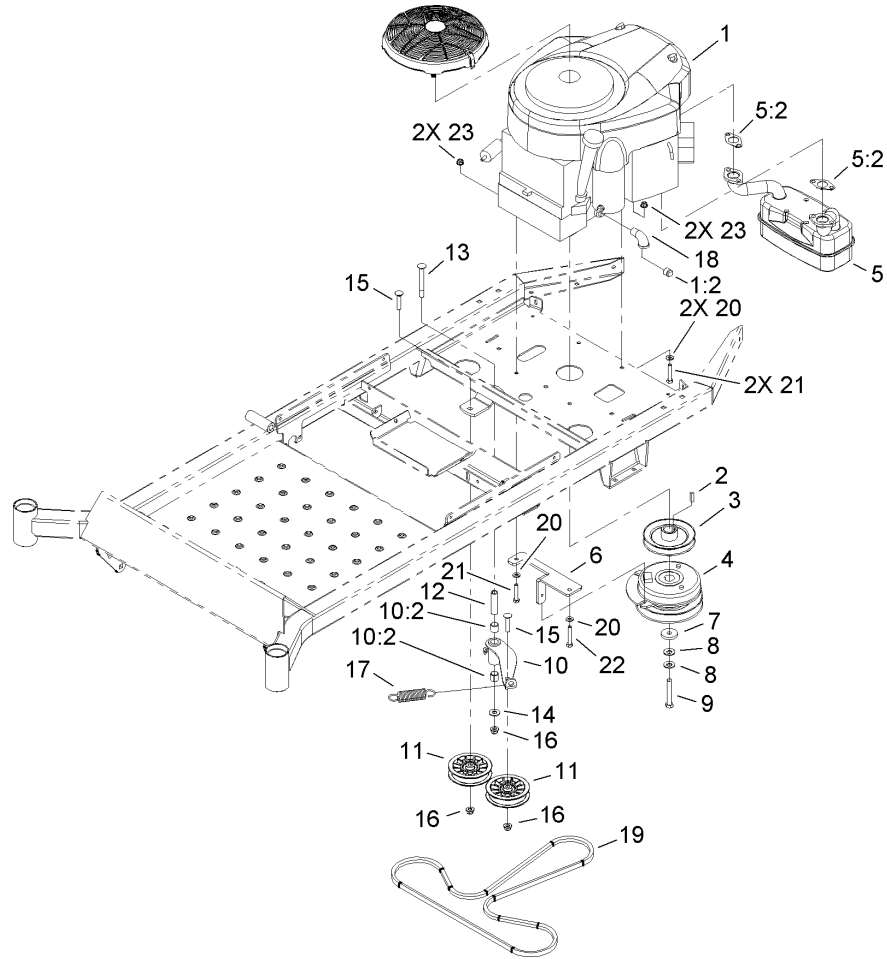
Ref	Part No.	Qty.	Description
1	106-6916	1	Plate-Seat
2	109-2628	1	Cable-Stop, Seat
3	321-5	2	Screw-HH
4	104-7201	2	Nut-HF
5	109-6184	1	Seat ASM
5:1	107-1880	1	Seat Track Kit
5:2	109-6381	1	Seat, Toro
5:6		1	Armrest Kit
5:6:1	110-6569	1	LH Armrest Kit
5:6:2	110-6570	1	RH Armrest Kit
5:6:3	108-6179	6	Screw-HSBH
6	104-8300	6	Nut-Flange, NI
7	103-9376	2	Bumper-Seat
8	109-6564	1	Pin-Seat Pivot
9	99-2385	1	Decal
10	109-6016	1	Decal-Service Aid



### Fuel Tank Assembly

Ref	Part No.	Qty.	Description
1	109-5510	1	Fuel Tank ASM
1:1	103-2605	1	Fitting-Fuel, Bulkhead
1:2	109-0346	1	Cap-Fuel, Gas
1:3	109-3412	1	Tank,Fuel
2	3230-3	2	Screw-CARR
3	3256-23	2	Washer-Flat
4	1-633349	2	Spring-Tank, Fuel
5	3296-47	2	Nut-Lock, NI
6	3230-16	1	Screw-CARR
7	104-8300	1	Nut-Flange, NI
8	1-303077	4	Clamp
9	105-1853	1	Clamp-Hose
10	109-0304	1	Hose-Fuel
11	1-603770	1	Valve-Fuel
12	109-0286	1	Hose-Fuel

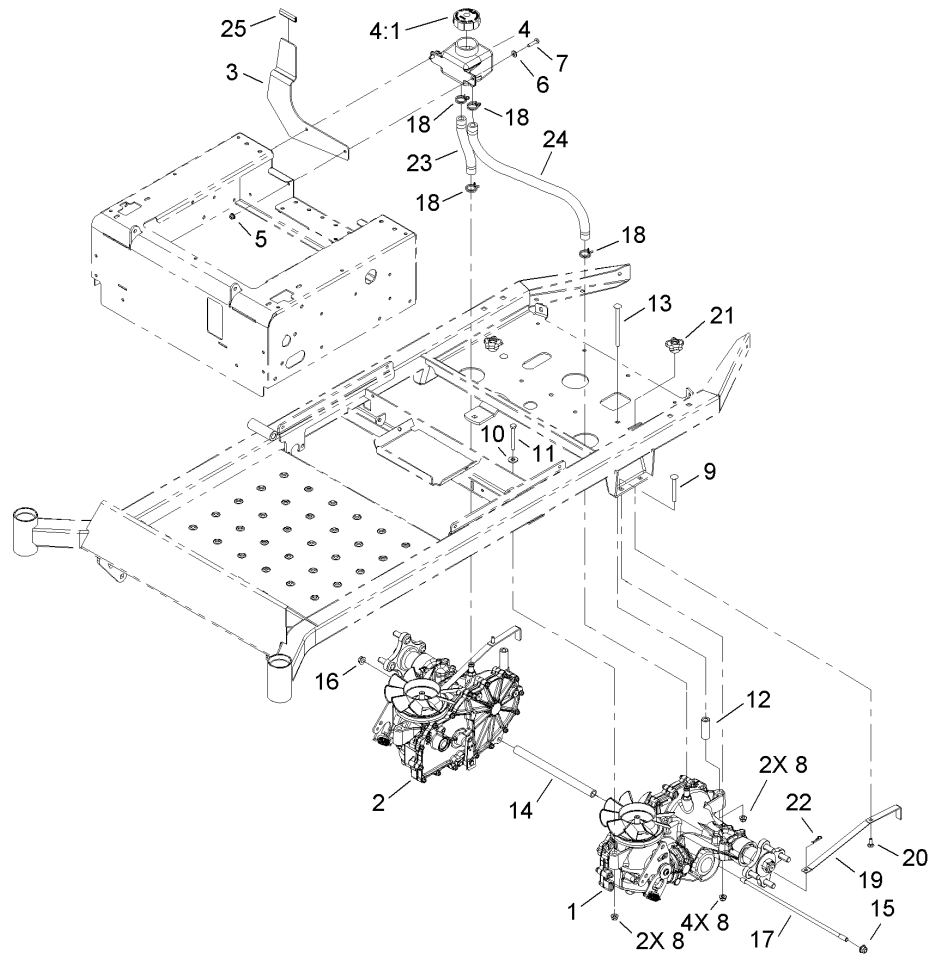
--	--	--	--



## Engine Assembly

Ref	Part No.	Qty.	Description
1	109-3700	1	Engine-Briggs And Stratton, 44K777-0123-E1
1:2	281-2	1	Plug-Pipe, SQH
2	5-7280	1	Key
3	109-3386	1	Sheave-Split Steel
4	110-6766	1	Clutch-Electric, PTO
5	109-6402	1	Muffler ASM
5:2	104-3226	2	Gasket-Exhaust
6	109-3694-03	1	Anchor-Clutch
7	1-543610	1	Washer-Clutch
8	1-603610	2	Washer-Spring
9	3212-11	1	Screw-HH
10	109-5259	1	Idler Arm ASM
10:2	1-513034	2	Sleeve-Bearing
11	109-3397	2	Pulley-Flat Idler
12	1-603384	1	Bushing-Pivot, Idler
13	3231-11	1	Screw-CARR
14	3256-4	1	Washer-Flat
15	3231-5	2	Screw-CARR
16	104-8301	3	Nut-Flange, NI
17	1-603402	1	Spring-Extension
18	1-403124	1	Elbow-90 DEG
19	109-3388	1	Belt
20	1-303334	4	Washer-Spring

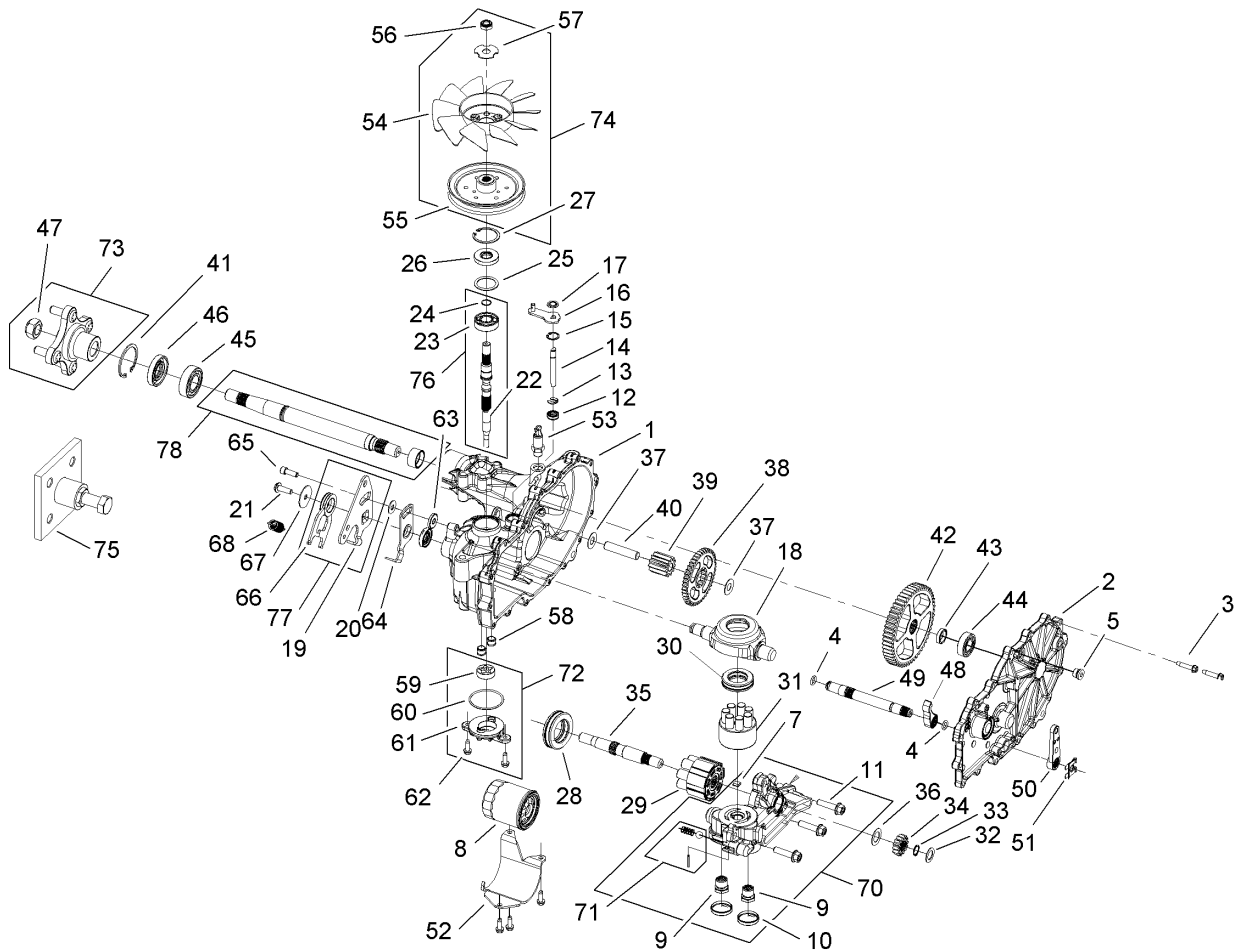
Ref	Part No.	Qty.	Description
21	322-9	3	Screw-HH
22	322-10	1	Screw-HH
23	104-8300	4	Nut-Flange, NI



## Transmission Assembly

Ref	Part No.	Qty.	Description
1	109-3372	1	Transmission-LH
2	109-3371	1	Transmission-RH
3	109-6570-03	1	Bracket-Fender Support
4	109-2250	1	Vent-Tank, Hydro
4:1	109-3320	1	Cap-Reservoir, Hydraulic
5	104-7201	2	Nut-HF
6	3256-22	2	Washer-Flat
7	321-6	2	Screw-HH
8	104-8300	8	Nut-Flange, NI
9	3230-9	4	Screw-CARR
10	3256-3	2	Washer-Flat
11	322-12	2	Screw-HH
12	109-3652	2	Spacer-Hydro
13	3230-30	2	Screw-CARR
14	109-3710	1	Tube-Spacer
15	104-8301	1	Nut-Flange, NI
16	3290-357	1	Nut-HHF, Whiz
17	109-3711	1	Rod-Tension
18	109-3322	4	Clamp-Hose
19	109-5395	2	Arm-Hydro Bypass
20	3229-1	2	Screw-CARR
21	108-6402	2	Knob-Handle
22	1-806003	2	Pin-Hair
23	109-5577	1	Hose-Hydraulic

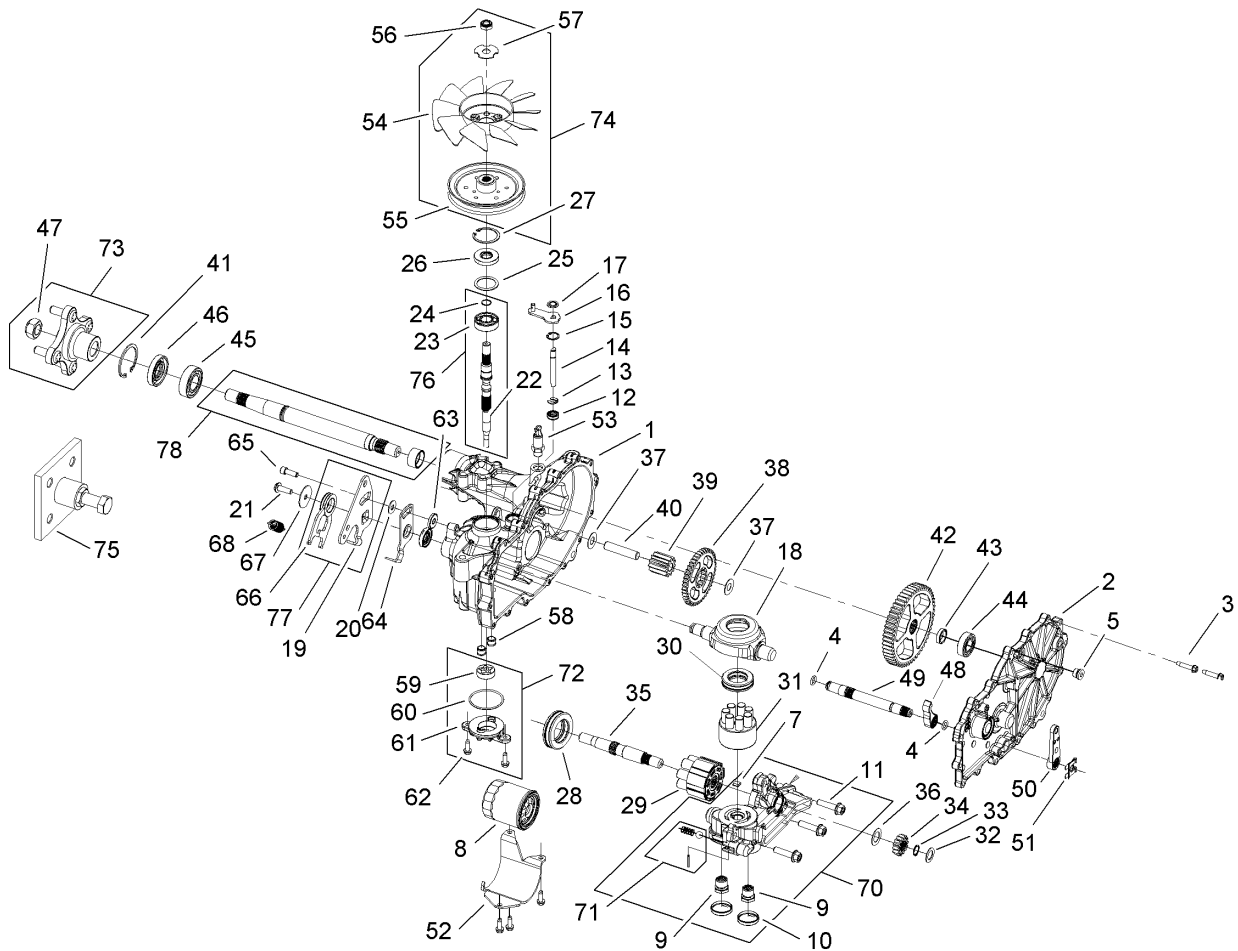
Ref	Part No.	Qty.	Description
24	109-5578	1	Hose-Hydraulic
25	109-2985	1	Trim



## RH Transmission Assembly No. 109-3371

Ref	Part No.	Qty.	Description
1	114-1676	1	RH Main Housing Kit
2	114-1677	1	RH Side Cover Kit
3	104-5305	16	Screw-HHF
4	114-1678	2	O-Ring
5	112-9850	1	Plug
6	114-1679	1	Loctite 590-Gasket Material
7	114-1680	1	Plate-Bypass
8	109-3321	1	Element-Oil Filter, HYD
9	114-1682	2	Check Plug
10	114-1683	2	Seal-Plug
11	114-1684	3	Screw-Hfhc
12	106-8676	1	Seal-Lip
13	106-8677	1	Ring-Retaining, EXT
14	114-1685	1	Rod-Bypass
15	106-8679	1	Ring-Retaining, Int
16	107-2490	1	Arm-Bypass
17	106-8681	1	Ring-Retaining, EXT
18	104-5304	1	Swashplate-Trunnion
19	114-1686	1	Arm-Control, RH
20	114-8491	1	Washer
21	107-2488	1	Screw
22	114-1687	1	Shaft-Input
23	103-7441	1	Bearing-Shaft, Input
24	104-5307	1	Ring-Retaining

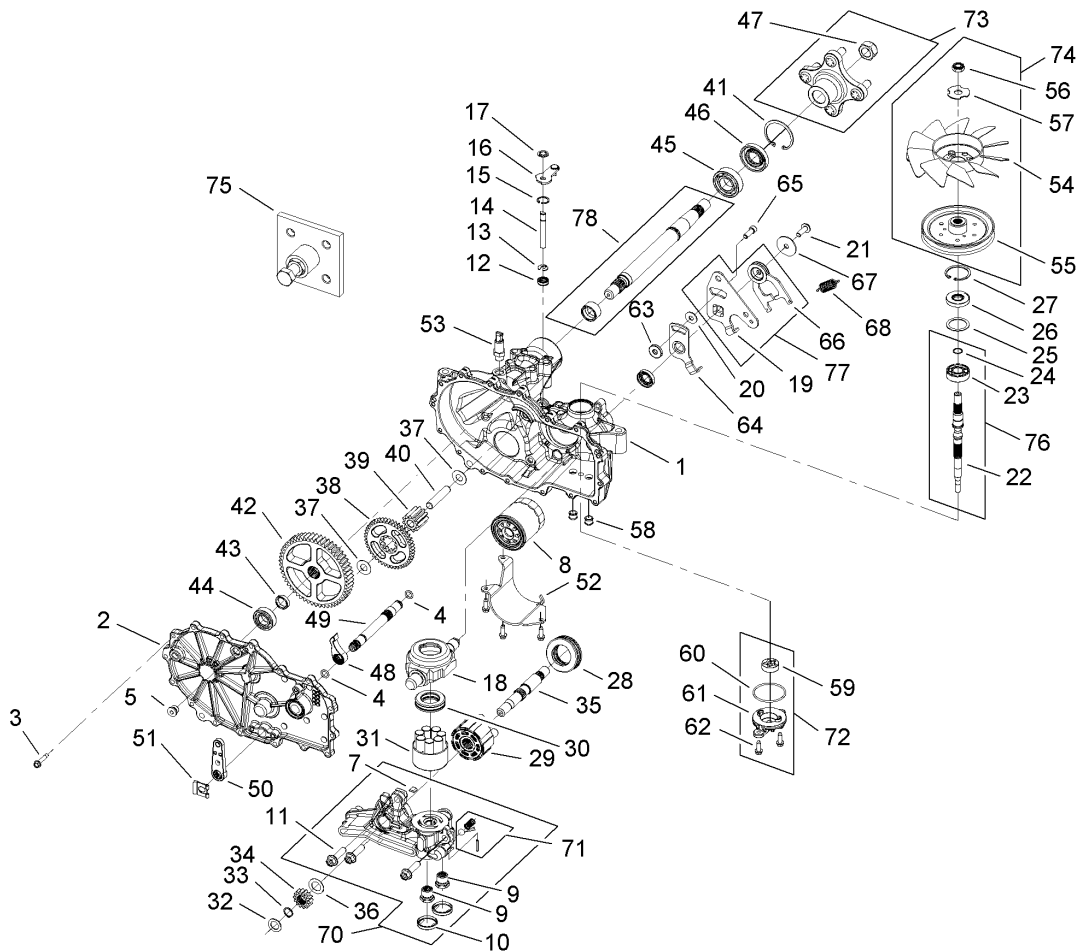
Ref	Part No.	Qty.	Description
25	104-5308	1	Spacer
26	104-5310	1	Seal-Lip
27	104-5309	1	Ring-Retaining
28	114-1688	1	Bearing-Thrust
29	114-1689	1	Motor Cylinder Block Kit
30	94-6922	1	Bearing-Thrust
31	110-8561	1	Pump Block ASM
32	104-5339	1	Washer-Flat
33	104-5340	1	Ring-Retaining
34	114-1690	1	Gear-14T
35	114-1691	1	Shaft-Motor
36	104-5360	1	Washer-Shaft, Motor
37	94-1933	2	Washer
38	114-1692	1	Gear-45T
39	114-1693	1	Gear-11T
40	104-5329	1	Pin-Jackshaft
41	104-2169	1	Ring-Retaining
42	114-1694	1	Gear-54T
43	114-1695	1	Spacer
44	114-1696	1	Bearing-Ball
45	104-2143	1	Bearing-Ball
46	104-2144	1	Seal
47	105-1895	1	Nut
48	114-1697	1	Pawl-Brake



## RH Transmission Assembly No. 109-3371 (continued)

Ref	Part No.	Qty.	Description
49	114-1698	1	Shaft-Inboard Brake
50	114-1699	1	Handle-Brake
51	114-8450	1	Clip-Retaining
52	114-8451	1	Guard-Filter, RH
53	109-3278	1	Adapter-Straight
●53:1	1-603921	1	O-Ring
54	114-8453	1	Fan-7.0
55	114-8454	1	Pulley-5.0 Inch
56	105-1875	1	Nut-Lock
57	107-9122	1	Washer-Slotted
58	114-8455	2	Tube-Connecting
59	104-2122	1	Gerotor ASM
60	109-3540	1	O-Ring-Seal, Charge Cover
61	114-8457	1	Cover-Charge Pump
62	104-2120	2	Screw
63	114-8458	1	Spacer
64	114-8459	1	Arm-Neutral, Right
65	106-8682	1	Screw-Sh
66	114-8460	1	Cw Rtn ASM
67	114-8478	1	Washer
68	109-5592	1	Spring-Extension
●69	109-3537	1	Complete Seal Kit
70	114-8463	1	RH Center Section Kit
71	114-8464	1	Charge Relief Kit

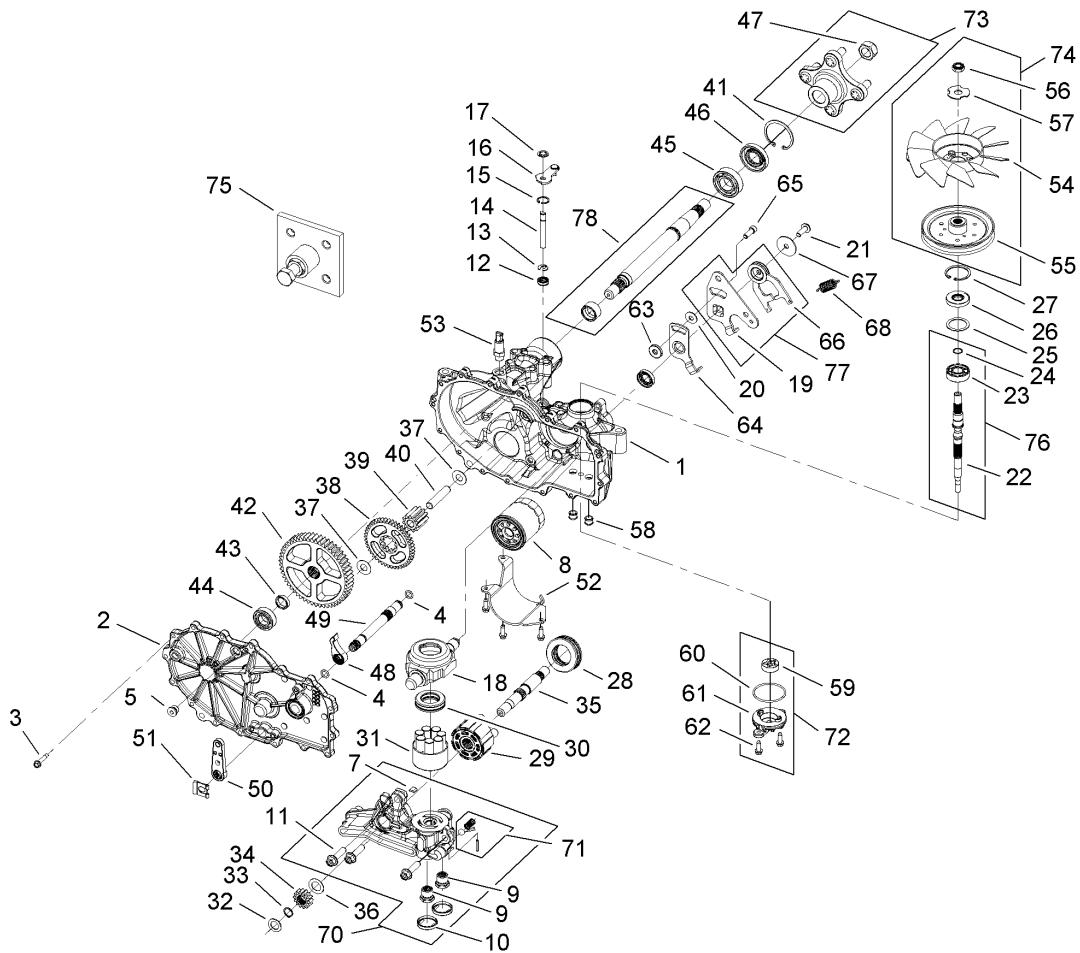
Ref	Part No.	Qty.	Description
72	114-8465	1	Charge Kit
73	109-5939	1	Hub Kit
●73:2		1	Hub W/Studs
74	109-5938	1	Fan And Pulley Kit
●74:2		1	Pulley
●74:3		1	Locknut-Hex
●74:4		1	Washer
75	114-8467	1	Hub-Puller, 4 Bolt
76	114-8468	1	Input Shaft Kit
77	114-8469	1	Rtn Cw Kit
78	114-8470	1	Axle Shaft Kit



## LH Transmission Assembly No. 109-3372

Ref	Part No.	Qty.	Description
1	114-8471	1	LH Main Housing Kit
2	114-8472	1	LH Side Cover Kit
3	104-5305	16	Screw-HHF
4	114-1678	2	O-Ring
5	112-9850	1	Plug
6	114-1679	1	Loctite 590-Gasket Material
7	114-1680	1	Plate-Bypass
8	109-3321	1	Element-Oil Filter, HYD
9	114-1682	2	Check Plug
10	114-1683	2	Seal-Plug
11	114-1684	3	Screw-Hfhc
12	106-8676	1	Seal-Lip
13	106-8677	1	Ring-Retaining, EXT
14	114-1685	1	Rod-Bypass
15	106-8679	1	Ring-Retaining, Int
16	107-2490	1	Arm-Bypass
17	106-8681	1	Ring-Retaining, EXT
18	104-5304	1	Swashplate-Trunnion
19	114-1686	1	Arm-Control, RH
20	114-8491	1	Washer
21	107-2488	1	Screw
22	114-1687	1	Shaft-Input
23	103-7441	1	Bearing-Shaft, Input
24	104-5307	1	Ring-Retaining

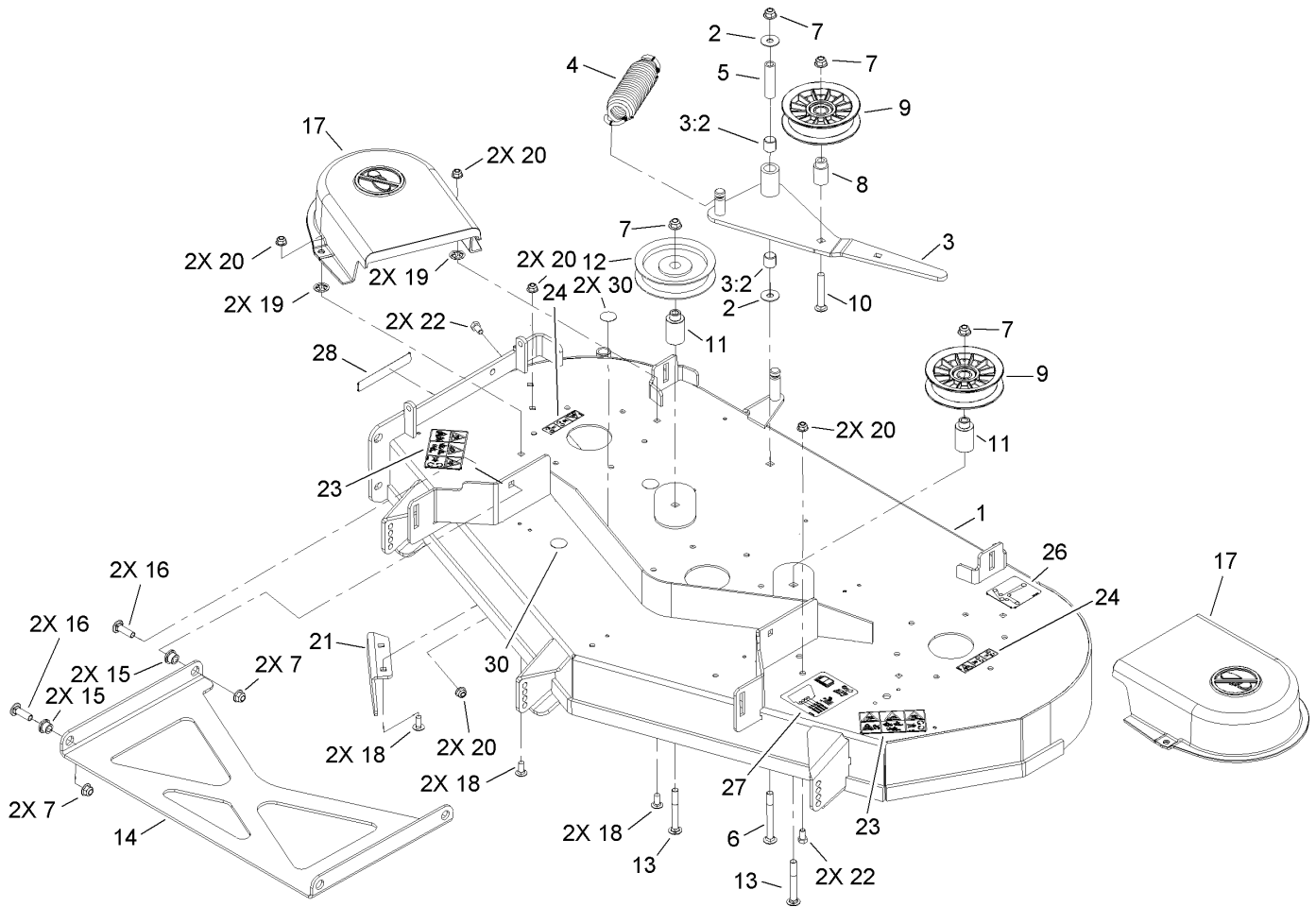
Ref	Part No.	Qty.	Description
25	104-5308	1	Spacer
26	104-5310	1	Seal-Lip
27	104-5309	1	Ring-Retaining
28	114-1688	1	Bearing-Thrust
29	114-1689	1	Motor Cylinder Block Kit
30	94-6922	1	Bearing-Thrust
31	110-8561	1	Pump Block ASM
32	104-5339	1	Washer-Flat
33	104-5340	1	Ring-Retaining
34	114-1690	1	Gear-14T
35	114-1691	1	Shaft-Motor
36	104-5360	1	Washer-Shaft, Motor
37	94-1933	2	Washer
38	114-1692	1	Gear-45T
39	114-1693	1	Gear-11T
40	104-5329	1	Pin-Jackshaft
41	104-2169	1	Ring-Retaining
42	114-1694	1	Gear-54T
43	114-1695	1	Spacer
44	114-1696	1	Bearing-Ball
45	104-2143	1	Bearing-Ball
46	104-2144	1	Seal
47	105-1895	1	Nut
48	114-1697	1	Pawl-Brake



## LH Transmission Assembly No. 109-3372 (continued)

Ref	Part No.	Qty.	Description
49	114-1698	1	Shaft-Inboard Brake
50	114-1699	1	Handle-Brake
51	114-8450	1	Clip-Retaining
52	114-8473	1	Guard-Filter, LH
53	109-3278	1	Adapter-Straight
①53:1	1-603921	1	O-Ring
54	114-8453	1	Fan-7.0
55	114-8454	1	Pulley-5.0 Inch
56	105-1875	1	Nut-Lock
57	107-9122	1	Washer-Slotted
58	114-8455	1	Tube-Connecting
59	104-2122	1	Gerotor ASM
60	109-3540	1	O-Ring-Seal, Charge Cover
61	114-8457	1	Cover-Charge Pump
62	104-2120	1	Screw
63	114-8458	1	Spacer
64	114-8474	1	Arm-Neutral, Left
65	106-8682	1	Screw-Sh
66	114-8475	1	Rtn Ccw ASM
67	114-8478	1	Washer
68	109-5592	1	Spring-Extension
①69	109-3537	1	Complete Seal Kit
70	114-8476	1	LH Center Section Kit
71	114-8464	1	Charge Relief Kit

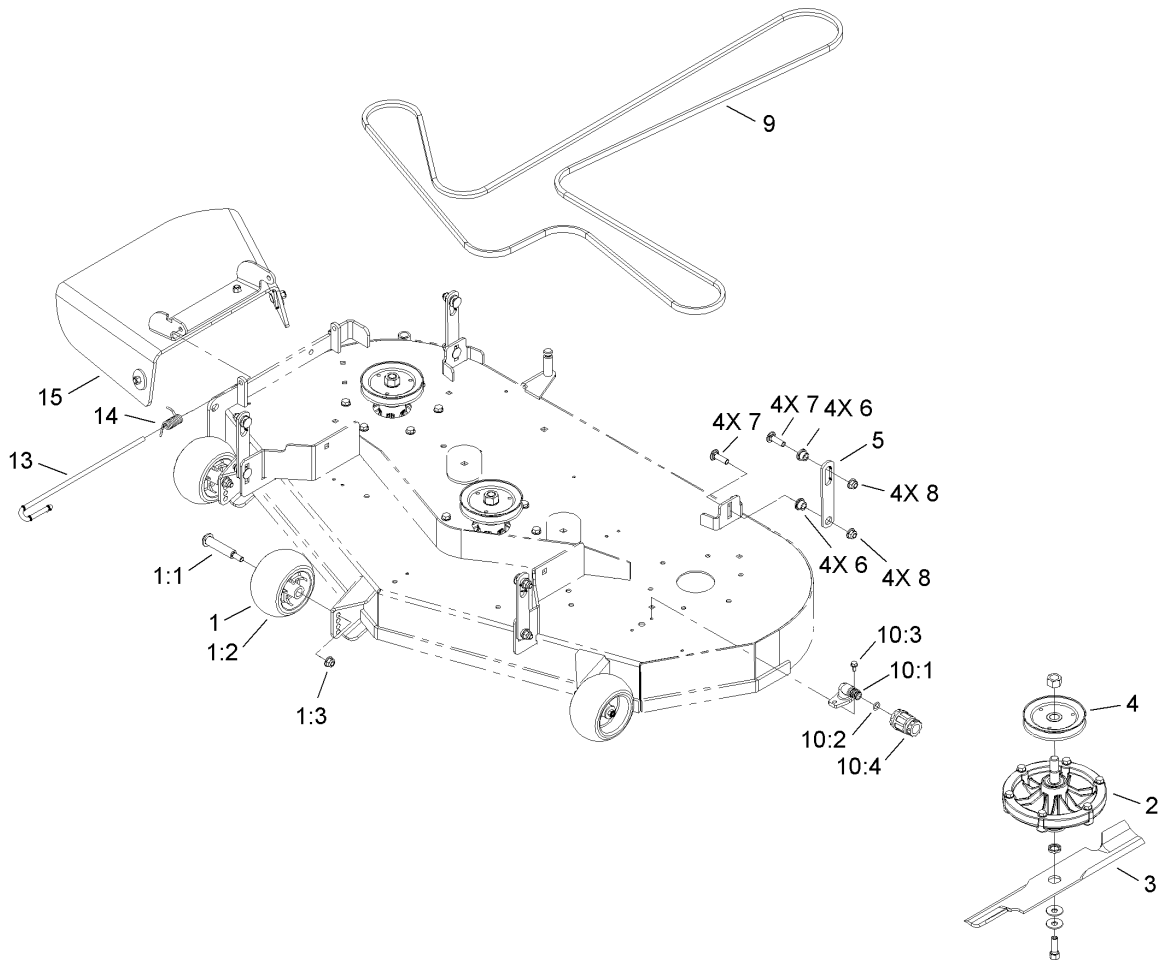
Ref	Part No.	Qty.	Description
72	114-8465	1	Charge Kit
73	109-5939	1	Hub Kit
②73:2		1	Hub W/Studs
74	109-5938	1	Fan And Pulley Kit
②74:2		1	Pulley
②74:3		1	Locknut-Hex
②74:4		1	Washer
75	114-8467	1	Hub-Puller, 4 Bolt
76	114-8468	1	Input Shaft Kit
77	114-8477	1	Rtn Ccw Kit
78	114-8470	1	Axle Shaft Kit



### 48 Inch Deck Assembly

Ref	Part No.	Qty.	Description
1	109-6253	1	48 Inch Deck ASM
2	52-2860	2	Washer
3	109-5276	1	Idler Arm ASM
3:2	1-513034	2	Sleeve-Bearing
4	103-3330	1	Spring-Extension
5	1-603384	1	Bushing-Pivot, Idler
6	3231-11	1	Screw-CARR
7	104-8301	8	Nut-Flange, NI
8	1-413113	1	Bushing-Idler
9	109-3658	2	Sheave And Bearing ASM
10	3231-31	1	Screw-CARR
11	109-6572	2	Bushing-Idler
12	1-603843	1	Pulley-Idler
13	109-6868	2	Bolt-Carriage
14	109-3723-01	1	Strut-Deck
15	103-3900	4	Spacer-Strut
16	3231-28	4	Screw-CARR
17	109-3449	2	Shield-Belt
18	3230-23	6	Screw-CARR
19	78-7170	4	Ring-Retaining
20	104-8300	10	Nut-Flange, NI
21	109-5498-03	1	Baffle-Discharge
22	322-2	4	Screw-HH
23	110-6691	2	Decal-Danger

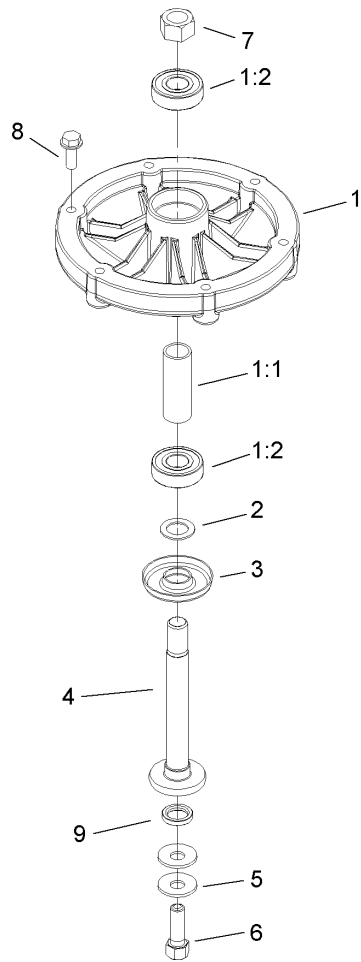
Ref	Part No.	Qty.	Description
24	109-6459	2	Decal-Belt Shield Warning
26	109-6035	1	Decal-Belt Routing
27	109-6036	1	Decal-Anti-Scalp Roller
28	93-7009	1	Decal-Danger
30	109-6625	3	Decal-Hole Cover



## 48 Inch Deck Blade and Discharge Assembly

Ref	Part No.	Qty.	Description
1	109-6388	3	Anti-Scalp Roller Kit
1:1	112-3977	1	Bolt-Shoulder
1:2	1-603299	1	Roller-Scalp, Anti
1:3	104-8301	1	Nut-Flange, NI
2	109-6394	3	Complete Cutter Housing ASM
3	109-6872	3	Blade-Notched
4	109-3747	3	Pulley-Blade Drive
5	109-3410	4	Hanger-Deck
6	103-3900	8	Spacer-Strut
7	3231-25	8	Screw-CARR
8	104-8301	8	Nut-Flange, NI
9	109-5364	1	Belt
10	109-6393	1	Washout Port Kit
10:1	95-2747	1	Fitting-Washout
10:2	46-6290	1	O-Ring
10:3	93-6083	2	Screw-HWH
10:4	95-3270	1	Connector-Hose
13	109-5152	1	Pin-Chute
14	57-6950	1	Spring
15	114-1651	1	Rubber Deflector ASM

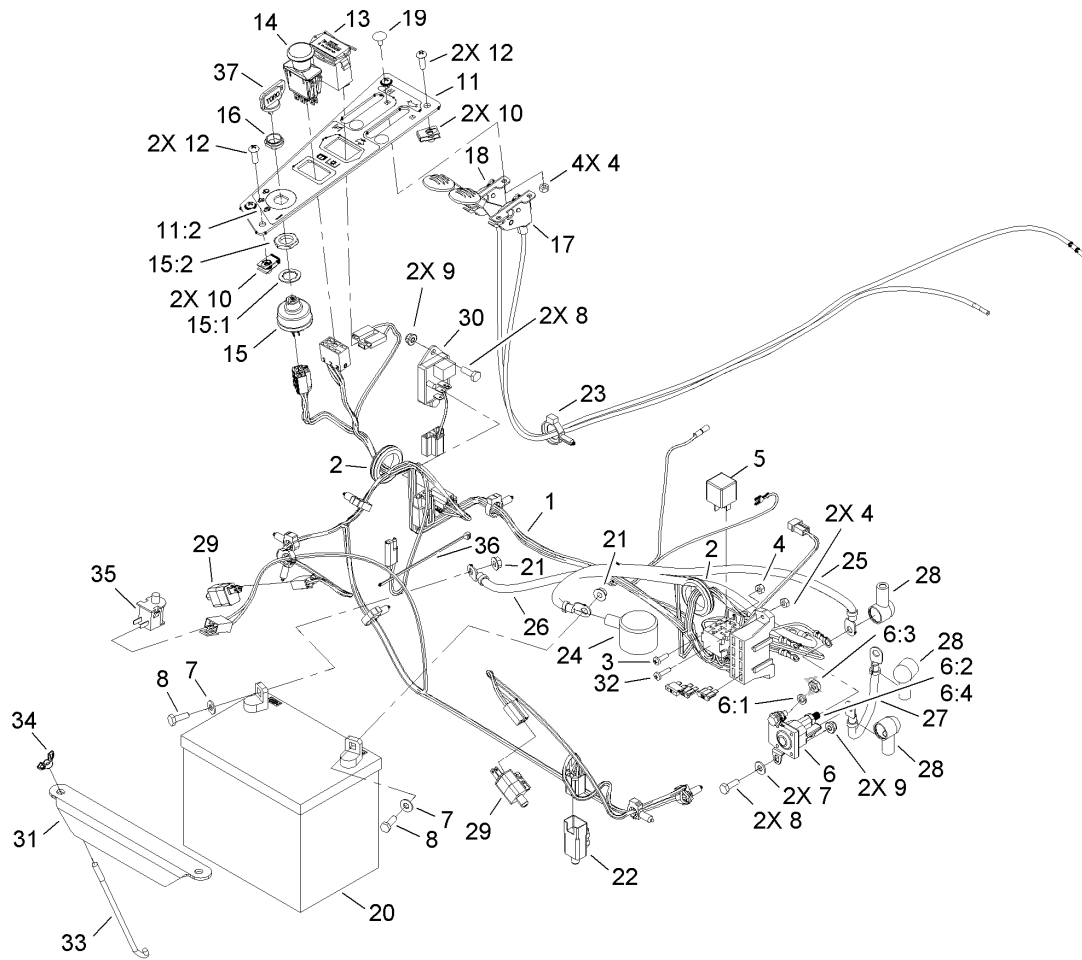
--	--	--	--



## Cutter Housing Assembly No. 109-6394

Ref	Part No.	Qty.	Description
1	109-5242	1	Cutter Housing ASM
1:1	62-3661	1	Spacer-Bearing
1:2	100-1048	2	Bearing-Ball
2	80-4380	1	Spacer
3	80-4360	1	Shield-Bearing
4	80-4341	1	Shaft
5	3290-465	2	Washer-Belleville
6	26-0671	1	Screw-Blade
7	3219-6	1	Nut-Hex
8	32144-41	6	Screw-Taptite
9	109-6857	1	Spacer



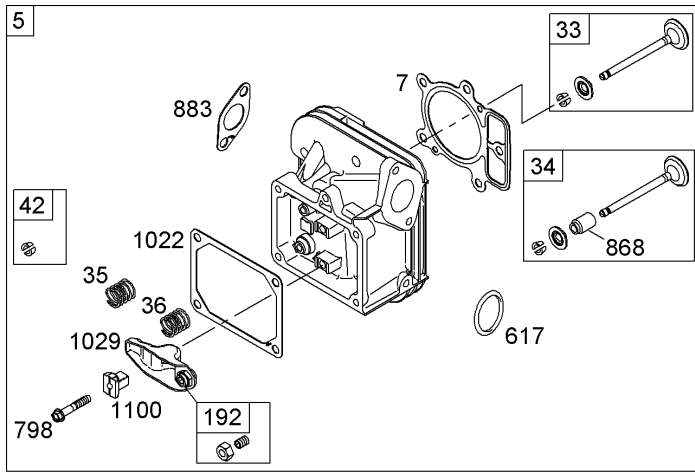


## Electrical Assembly

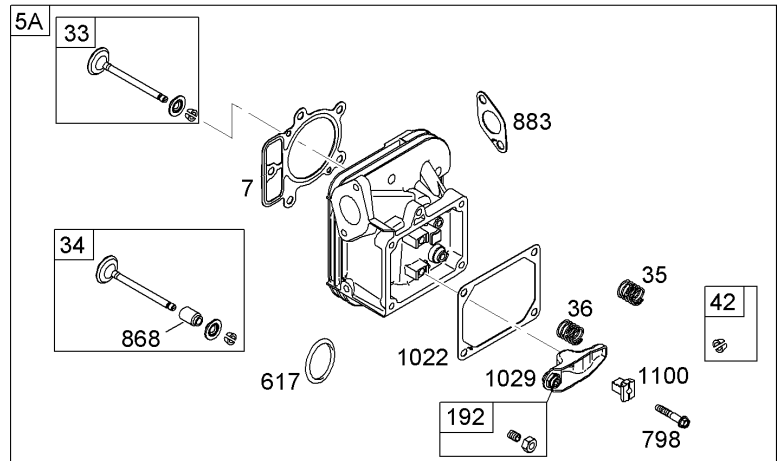
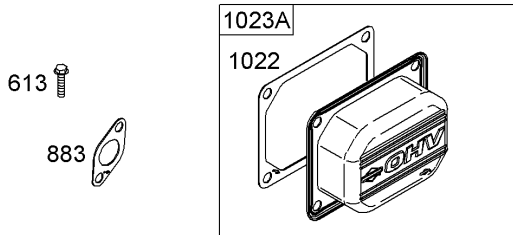
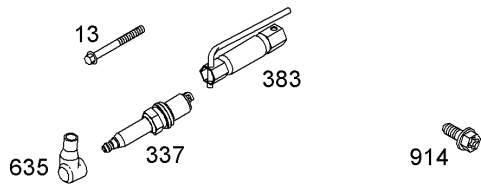
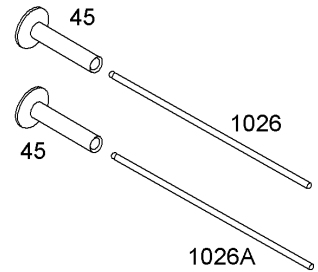
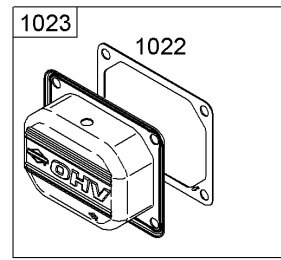
Ref	Part No.	Qty.	Description
1	109-5570	1	Harness
2	240-3	2	Grommet-Rubber
3	3290-500	1	Screw-PPH
4	3296-2	7	Nut-Lock
5	1-643275	1	Relay
6	1-513075	1	Switch-Solenoid
6:1	3253-17	2	Washer-Lock
6:2	3253-4	2	Washer-Lock
6:3	3219-14	2	Nut-Hex
6:4	3220-2	2	Nut-Jam
7	3256-22	4	Washer-Flat
8	321-4	6	Screw-HH
9	104-7201	4	Nut-HF
10	107069	4	Clip
11	109-6398	1	Control Panel ASM
11:2	109-6029	1	Decal-Console
12	3258-166	4	Screw-PRH
13	1-513374	1	Meter-Hour
14	103-5221	1	Switch-PTO
15	103-0206	1	Switch-Starting, Key
15:1	3254-5	1	Washer-Tooth
15:2	218-461	1	Nut-HH
16	103-0498	1	Nut-Switch, Ignition
17	109-3987	1	Control-Throttle

Ref	Part No.	Qty.	Description
18	109-5607	1	Control-Choke
19	1-807513	4	Bolt-CARR
20	104-2491	1	Battery-Dry
21	32128-33	2	Nut-HF
22	99-7408	1	Switch-Reverse
23	105-1853	1	Clamp-Hose
24	109-2407	1	Insulator-Battery
25	1-513053	1	Cable-Battery, Positive
26	103-0705	1	Cable-Ground, Negative
27	1-633306	1	Cable-Starter, Positive
28	1-543393	3	Insulator-Solenoid
29	110-6765	2	Switch-Single Pole No
30	103-5218	1	Module-Delay, Seat
31	103-1311-03	1	Holddown-Battery
32	3250-13	2	Screw-PPH
33	1-633651	2	Bolt-Holddown
34	1-543792	2	Wingnut
35	82-2190	1	Switch-Bail
36	1-303287	1	Tie-Plastic
37	63-8360	1	Key-Ignition





Assemblies include all parts shown in frames



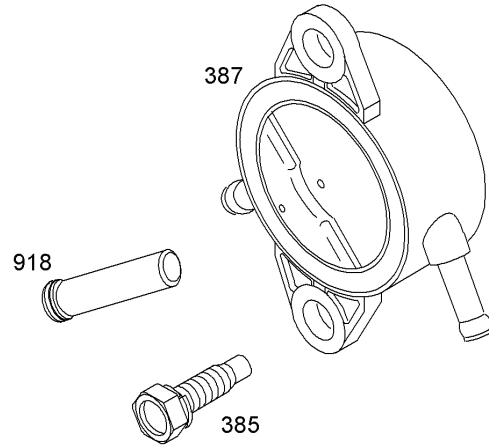
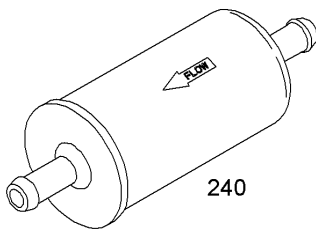
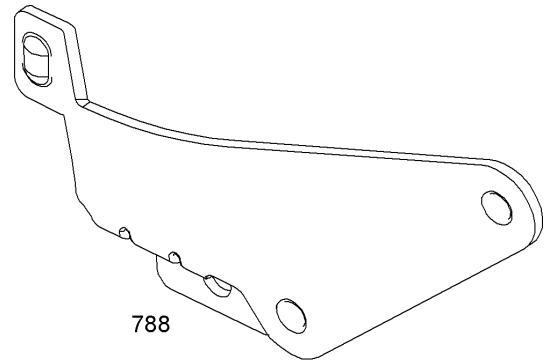
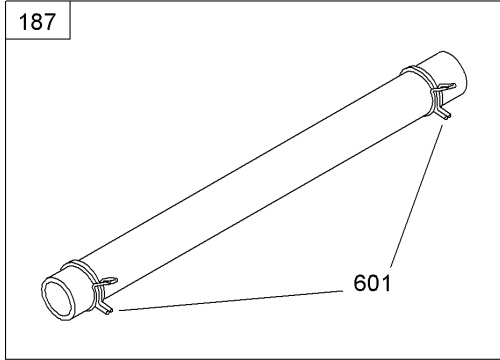
## Cylinder Head Assembly Briggs and Stratton 44K777-0123-E1

Ref	Part No.	Qty.	Description
5	792299	1	Head-Cylinder (Cylinder No.1)
5A	792300	1	Head-Cylinder (Cylinder No.2)
7	693997	1	Gasket-Head, Cylinder
13	791130	1	Screw (Cylinder Head)
33	697576	1	Valve-Exhaust
34	792200	1	Valve-Intake
35	694865	1	Spring-Valve (Intake)
36	694865	1	Spring-Valve (Exhaust)
42	499586	1	Keeper-Valve
45	690977	1	Valve-Tappet
192	690083	1	Adjuster-Arm, Rocker
337	792015	1	Plug-Spark
383	19374s	1	Wrench-Spark Plug
613	690341	1	Screw (Muffler)
617	697891	1	O-Ring, Seal (Intake Manifold)
635	66538s	1	Boot-Spark Plug
798	697890	1	Screw (Rocker Arm)
868	690968	1	Seal-Valve
883	690970	1	Gasket-Exhaust
914	691127	1	Screw (Rocker Cover)
1022	690971	1	Gasket-Cover, Rocker
1023	793146	1	Cover-Rocker (Cylinder 1)

Ref	Part No.	Qty.	Description
1023A	499600	1	Cover-Rocker (Cylinder 2)
1026	690981	1	Rod-Push (Steel)
1026A	690982	1	Rod-Push (Aluminum)
1029	690972	1	Arm-Rocker
1100	791959	1	Pivot-Arm, Rocker





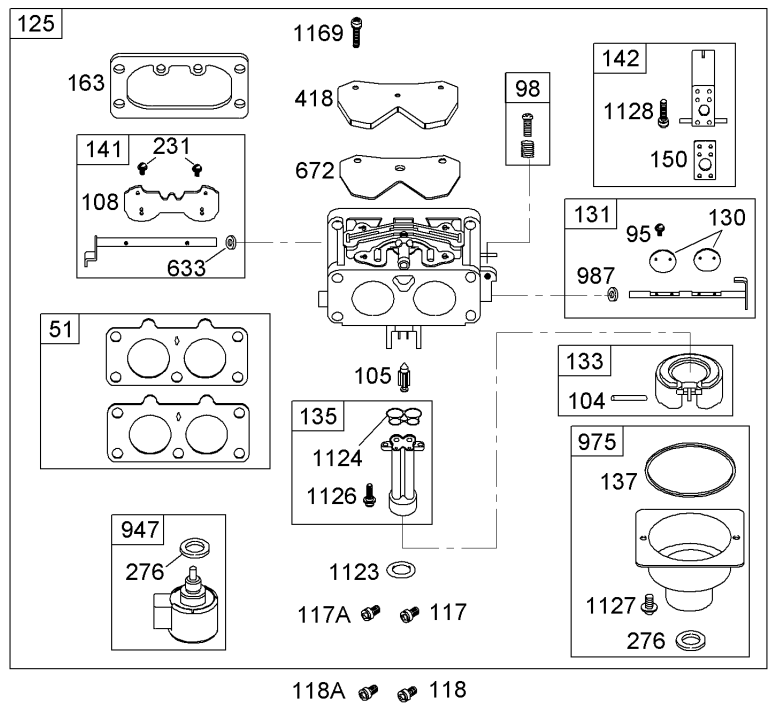
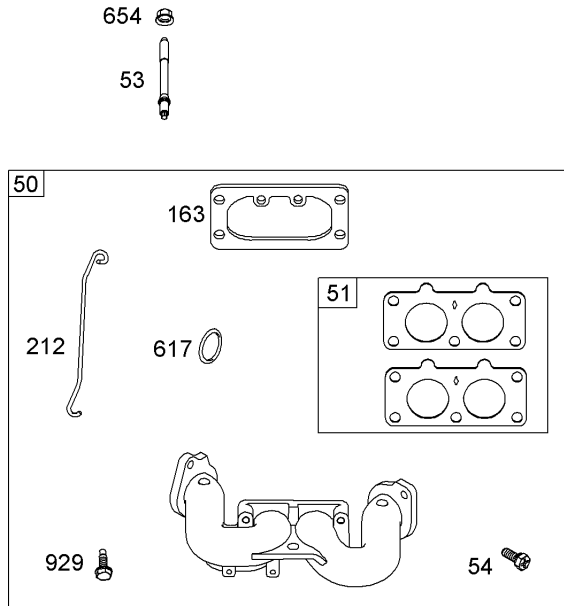


Assemblies include all parts shown in frames

## Fuel Line and Pump Assembly Briggs and Stratton 44K777-0123-E1

Ref	Part No.	Qty.	Description
187	791766	1	Line-Fuel (Cut To Required Length)
240	695666	1	Filter-Fuel
385	691108	1	Screw (Fuel Pump)
387	808656	1	Pump-Fuel
601	691038	1	Clamp-Hose
788	793145	1	Bracket-Pump, Fuel
918	793147	1	Hose-Vacuum

--	--	--	--



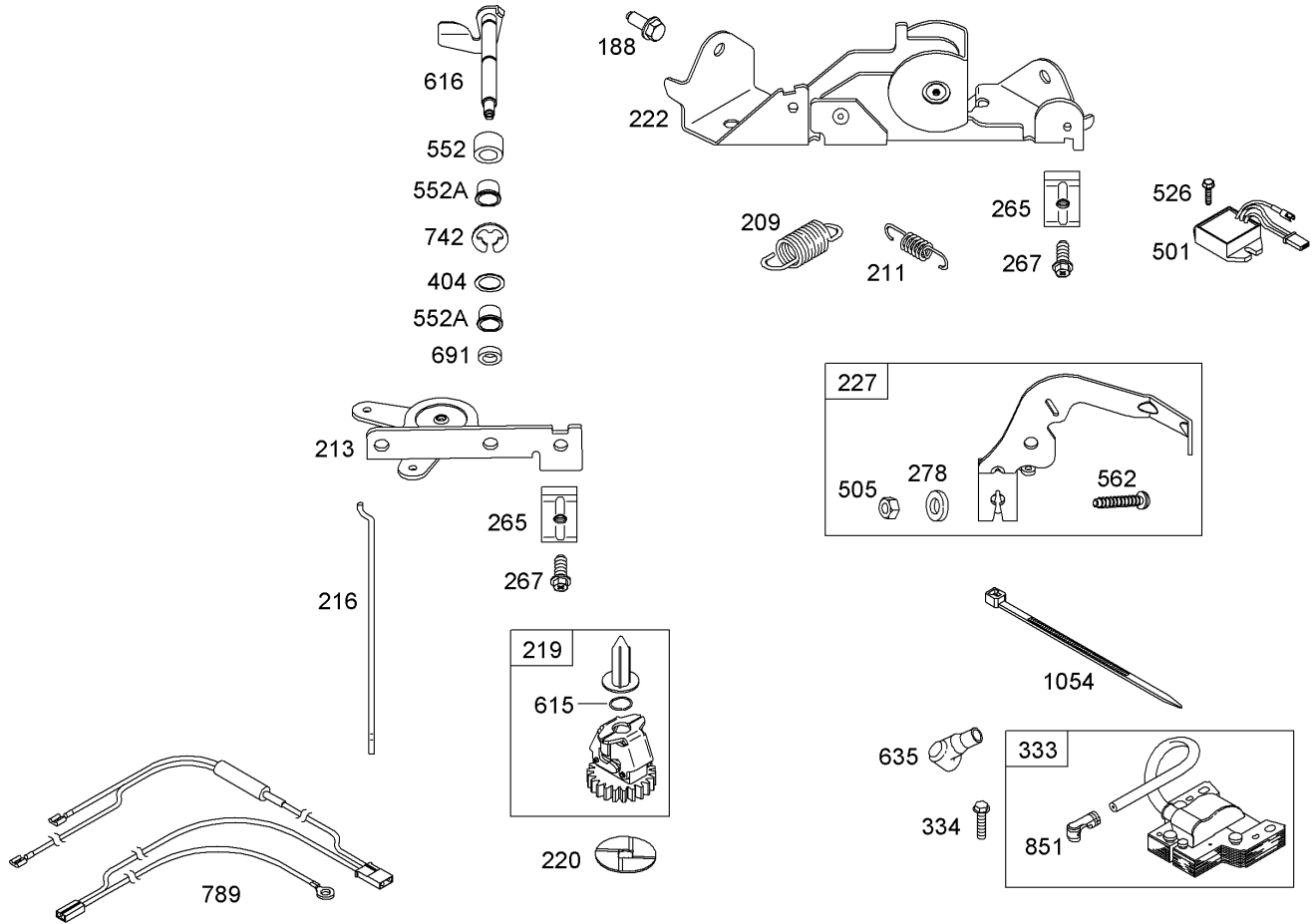
Assemblies include all parts shown in frames

## Carburetor Assembly Briggs and Stratton 44K777-0123-E1

Ref	Part No.	Qty.	Description
50	695241	1	Manifold-Intake
51	791677	1	Gasket-Intake
53	690951	1	Stud (Carburetor)
54	699816	1	Screw (Intake Manifold)
95	690718	1	Screw (Throttle Valve)
98	699721	1	Idle Speed Kit
104	694918	1	Pin-Hinge, Carburetor Float
105	698537	1	Valve-Needle, Float
108	699723	1	Valve-Choke
117	792296	1	Jet-Main (STD, LH)
117A	842627	1	Jet-Main (STD, RH)
118	699457	1	Jet-Main (High Altitude, LH)
118A	699733	1	Jet-Main (High Altitude, RH)
125	792295	1	Carburetor
130	690993	1	Valve-Throttle
131	499805	1	Throttle Shaft Kit
133	699724	1	Float-Carburetor
135	699729	1	Tube-Transfer, Fuel
137	690994	1	Gasket-Bowl, Float
141	699722	1	Choke Shaft Kit
142	699726	1	Nozzle-Carburetor
150	690995	1	Gasket-Nozzle

Ref	Part No.	Qty.	Description
163	691001	1	Gasket-Cleaner, Air
212	695238	1	Link-Throttle
231	690718	1	Screw (Choke Valve)
276	695410	1	Washer-Sealing
418	690999	1	Plate-Cover, Carburetor
617	697891	1	O-Ring, Seal (Intake Manifold)
633	690998	1	Seal-Shaft, Choke
654	690958	1	Nut (Carburetor)
672	690234	1	Gasket-Cover Plate, Carburetor
929	695239	1	Screw (Choke Control Bracket)
947	841546	1	Solenoid-Fuel
975	791232	1	Bowl-Float
987	691000	1	Seal-Shaft, Throttle
1123	841653	1	O-Ring, Seal (Solenoid Retainer)
1124	690988	1	O-Ring, Seal (Fuel Transfer Tube)
1126	690991	1	Screw (Fuel Transfer Tube)
1127	695407	1	Screw (Float Bowl)
1128	690990	1	Screw (Carburetor Nozzle)
1169	690990	1	Screw (Carburetor Cover Plate)





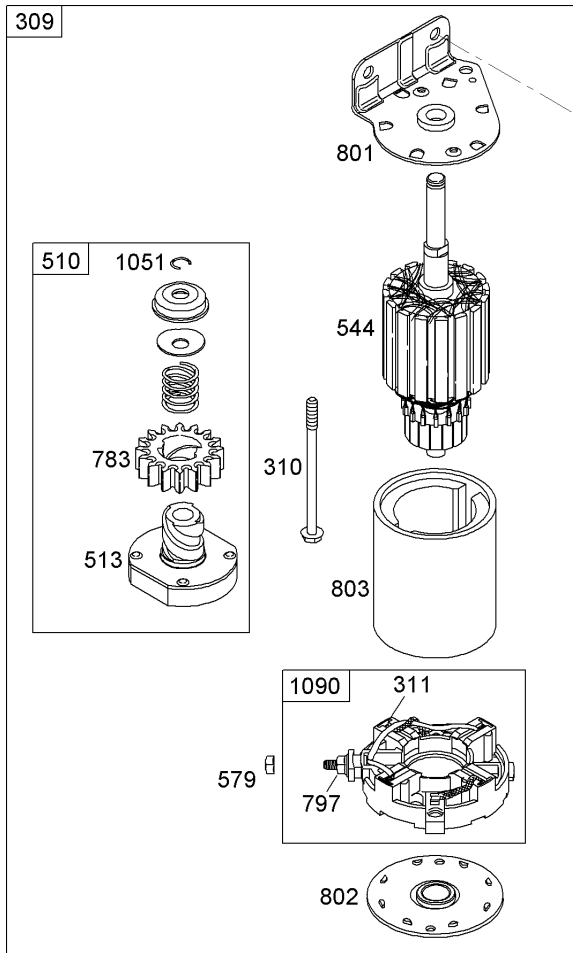
Assemblies include all parts shown in frames

## Governor Assembly Briggs and Stratton 44K777-0123-E1

Ref	Part No.	Qty.	Description
● 188	691108	1	Screw (Control Bracket)
● 209	793343	1	Spring-Governor
● 211	691019	1	Spring-Idle, Governed
● 213	691021	1	Bracket-Control, Choke
● 216	691022	1	Link-Choke
● 219	793338	1	Gear-Governor
● 220	690412	1	Washer (Governor Gear)
● 222	698761	1	Bracket-Control
● 227	792492	1	Lever-Control, Governor
● 265	691024	1	Clamp-Casing
● 267	695134	1	Screw (Casing Clamp)
● 278	792651	1	Washer (Governor Control Lever)
● 333	691060	1	Armature-Magneto
● 334	691061	1	Screw (Magneto Armature)
● 404	690442	1	Washer (Governor Crank)
● 501	691185	1	Regulator
● 505	691029	1	Nut (Governor Control Lever)
● 526	691108	1	Screw (Regulator)
● 552	690552	1	Bushing-Crank, Governor
● 552A	690553	1	Bushing-Crank, Governor
● 562	690311	1	Bolt (Governor Control Lever)
● 615	698290	1	Retainer-Shaft, Governor
● 616	691045	1	Crank-Governor
● 635	66538s	1	Boot-Spark Plug

Ref	Part No.	Qty.	Description
● ● 691	790574	1	Seal-Shaft, Governor
● 742	690328	1	Retainer-E Ring
● 789	691220	1	Harness-Wiring
● 851	493880s	1	Terminal-Spark Plug
● 1054	280275	1	Tie-Cable





Assemblies include all parts shown in frames

## Starter Assembly Briggs and Stratton 44K777-0123-E1

Ref	Part No.	Qty.	Description
309	499521	1	Motor-Starter
310	691263	1	Bolt (Starter Motor)
311	497608	1	Brush Set
510	696541	1	Drive-Starter
513	692024	1	Clutch-Drive
544		1	Armature-Starter (Service With 499521 Starter Motor)
579	691029	1	Nut (Starter Cable)
697	690372	1	Screw (Starter Motor)
783	695708	1	Gear-Pinion
797	693167	1	Nut (Brush Retainer)
801	691283	1	Cap-Drive
802	691286	1	Cap-End
803		1	Housing-Starter (Service With 499521 Starter Motor)
1051	691265	1	Ring-Retaining
1090	691293	1	Retainer-Brush

--	--	--	--





# Attachments and Accessories

## For 74812 - Titan Z4800 Zero-Turn-Radius Riding Mower

Product Name	Model/Part
48 Inch Bagging Blade Kit .....	79141
48 Inch Mulching Kit .....	79154
48 Inch and 52 Inch Bagger .....	79155
Z Sunshade .....	79157
Z Light Kit .....	79158

