

# 48in Mulching Kit Zero-Turn-Radius Riding Mower

Model No. 79154

## Parts Catalog

### Ordering Replacement Parts

To order replacement parts, please supply the part number, the quantity, and the description of each part desired.

### Understanding Reference Numbers

Each Identified part in an illustration has a reference number. The reference number for a part also appears in the parts list, along with other information about the part.

This catalog uses two special reference number formats, one to indicate parts in a service assembly and another to indicate the quantity of a given part in an illustration.

### Service Assembly Reference Numbers

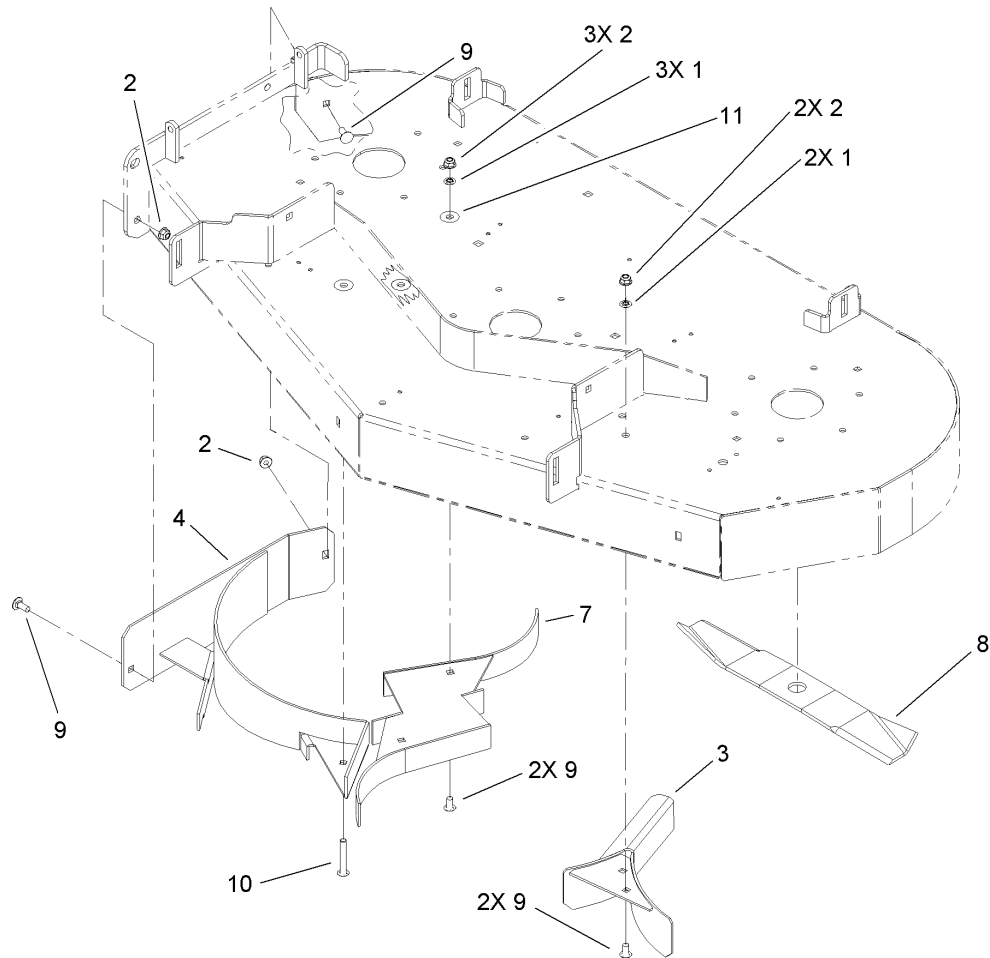
Parts in service assemblies have reference numbers in the form a:b. The a represents the reference number of the entire service assembly and the b represents a sequential number unique to each part within the service assembly.

For example, a wheel assembly might be identified by reference number 6, the tire by 6:1, the valve by 6:2, and the wheel by 6:3. When you order the assembly identified by reference number 6, you receive all parts identified by reference numbers 6:1, 6:2, and 6:3. However, you may also order any part individually. Reference numbers of this type appear in illustrations and in part lists.

### Reference Numbers Indicating Quantity

In an illustration, if a reference number indicates more than one part, the reference number has the form nX y. The n represents the quantity of the part, the X is the multiplication symbol, and the y represents the reference number.

For example, in an illustration, the reference number 2X 37 means that two of the parts identified by reference number 37 are indicated.



**Blade and Baffle Assembly**

Ref	Part No.	Qty.	Description				
1	109-5667	5	Ring-Bolt Retaining				
2	104-8300	7	Nut-Flange, NI				
3	109-5976-03	1	LH Mulch Baffle ASM				
4	109-5981-03	1	RH Mulch Baffle ASM				
7	109-6103-03	1	Center Baffle ASM				
8	109-6479	3	Blade-Mulch				
9	3230-23	6	Screw-CARR				
10	3230-7	1	Screw-CARR				
11	109-6625	3	Decal-Hole Cover				