



Clutch Cable Kit

2004 and After Heavy Duty–Workman® Vehicles

Part No. 112–3181

Form No. 3357–913 Rev. B

Installation Instructions

Remove the Clutch Cable

1. Raise bed (if so equipped) and place safety support on extended lift cylinder to hold up bed.
2. Position the vehicle on a level surface, stop engine, engage the parking brake and remove key from ignition switch.

Warning

Before servicing or making adjustments to the machine, stop engine, set parking brake and remove key from ignition switch. Any load material must be removed from bed or other attachment before working under raised bed. Never work under a raised bed without positioning safety support on a fully installed cylinder rod.

3. At the rear of the machine, disconnect the old clutch cable from the clutch lever ball joint (Fig. 1).
4. Remove the (2) capscrews securing the clutch cable mounting bracket to the bell housing (Fig. 1). Retain the capscrews.

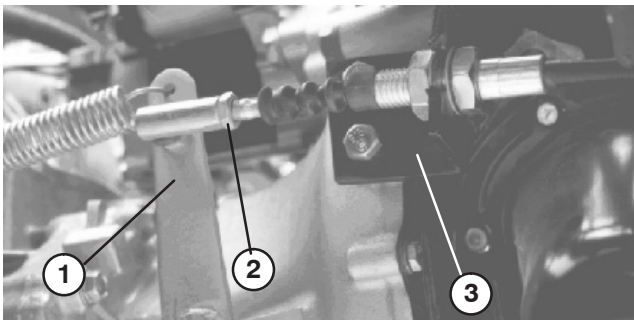


Figure 1

- | | |
|-----------------|---------------------|
| 1. Clutch lever | 3. Mounting bracket |
| 2. Ball joint | |

5. Remove the nut securing the clutch cable ball joint to the clutch pedal (Fig. 2). Retain the nut.

Note: Note how the cable is routed for the new installation.

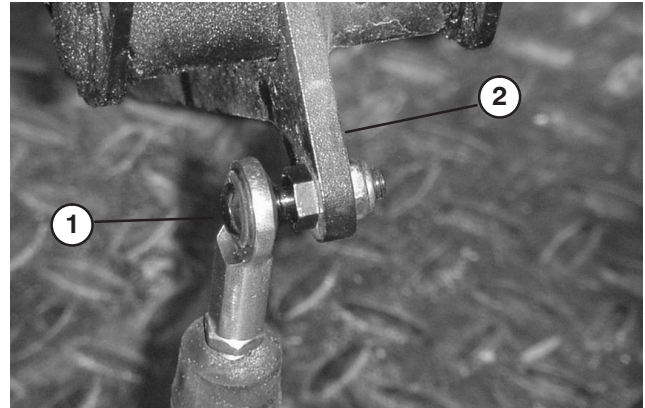


Figure 2

- | | |
|----------------------------|-----------------|
| 1. Clutch cable ball joint | 2. Clutch pedal |
|----------------------------|-----------------|

6. Install the new mounting bracket to the bell housing using the (2) capscrews previously removed (Fig. 3).

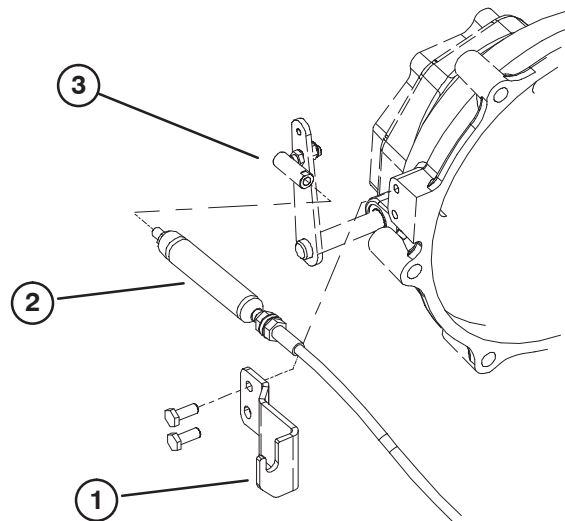


Figure 3

- | | |
|---------------------|---------------|
| 1. Mounting bracket | 3. Ball joint |
| 2. Clutch cable | |

7. Route the new cable the same as the previous cable.
8. Thread the end of the new clutch cable into the ball joint on the bell housing lever (Fig. 3).
9. Loosely install the clutch cable to the mounting bracket (Fig. 3).

10. Mount the clutch cable rod end to the clutch pedal with the nut previously removed (Fig. 4). Make sure the rod end is not twisted on the ball stud and is parallel to the clutch pedal.

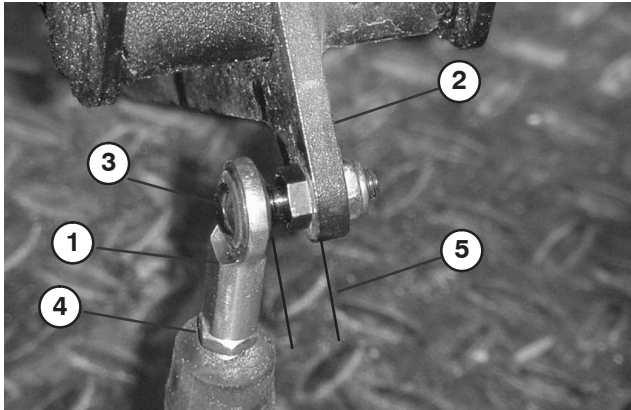


Figure 4

- | | |
|-------------------------|--------------------|
| 1. Clutch cable rod end | 4. Rod end jam nut |
| 2. Clutch pedal | 5. Parallel |
| 3. Ball stud | |

Adjust the Clutch Cable

Note: The clutch cable can be adjusted at the bell housing or at the clutch pedal pivot. The front hood can be removed to ease the access to pedal pivot.

1. Loosen the jam nuts securing the clutch cable to the bracket on the bell housing (Fig. 5).

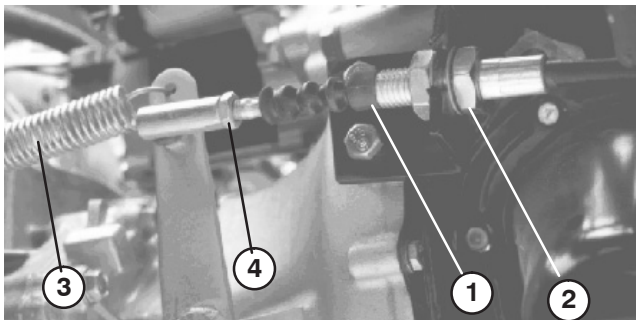


Figure 5

- | | |
|-----------------|------------------|
| 1. Clutch cable | 3. Return spring |
| 2. Jam nuts | 4. Ball joint |

Note: The ball joint may be removed and rotated, if additional adjustment is required.

2. Disconnect the return spring from the clutch lever.

3. Adjust the jam nuts/or ball joint until the back rear edge of the clutch pedal is $3.75'' \pm .12''$ from the top of the floor plate diamond pattern, when a 4 lb. force is applied to the pedal (Fig. 6).

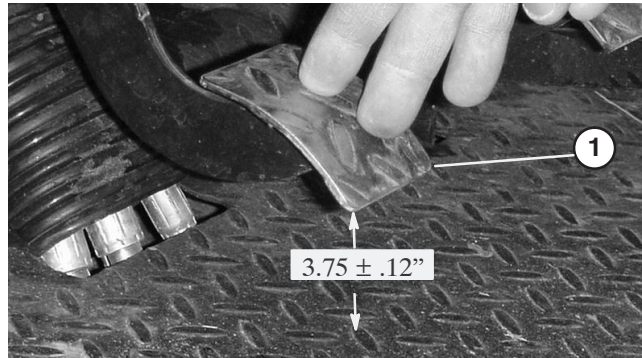


Figure 6

1. Clutch pedal

Note: Force is applied so the clutch release bearing lightly contacts pressure plate fingers.

4. Tighten the jam nuts after the adjustment has been attained.
5. Recheck the $3.75'' \pm .12''$ dimension after the jam nuts have been tightened to ensure proper adjustment. Readjust, if necessary.
6. Reconnect the return spring to the clutch lever.

Important Make sure the rod end is positioned squarely on the ball, not twisted, and remains parallel to the clutch pedal after the jam nut is tightened (Fig. 4).

Note: The clutch free play should never be less than $.75''$.

7. Recheck the clutch safety switch adjustment (Fig. 7). The engine must not crank unless clutch pedal is $1.25'' \pm .12''$ from floor. If an adjustment is required, loosen switch jam nuts and adjust up or down.

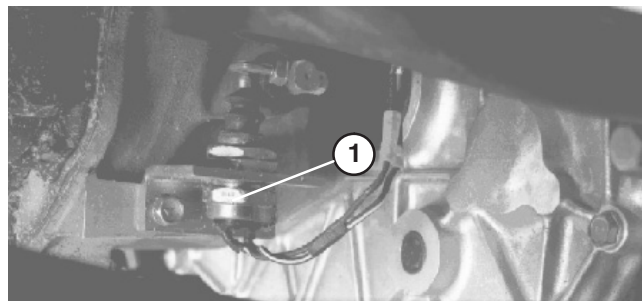


Figure 7

1. Clutch switch

8. Check the adjustment every 200 hours.