



Customer Service Bulletin Commercial Business Group

Greensmaster® 3250-D

Date: January 10, 2007

<u>Model/Serial Range:</u>	<u>Model Number:</u>	<u>Serial Numbers:</u>
GR3250-D	04383	200000101-260099999

Subject: Grass Collection Issues with GR3250-D using DPA Cutting Units

The suspension of the GR3250-D traction unit is designed to allow independent movement of the cutting unit in relation to the grass basket. When using DPA cutting units in some applications and grass conditions, excessive movement between the grass basket and cutting unit can cause some performance issues as:

- Insufficient collection of grass clippings in grass basket.
- The grass basket can catch under the cutting unit side frames, which allows the basket to wear on front rollers.
- The current production lift hoop can tilt the cutting unit forward, causing front roller to mark the turf when lowering the cutting units.

A DPA Offset Lift Hoop Kit (112-9293) is available to help correct the issues mentioned above. The kit contains a new shortened, offset solid lift hoop, new wide style pull links, and longer carrier frame adjusting screw with jam nut.

The lift hoop is offset to allow the cutting unit to hang with the rear roller lower than the front, which will:

- Improve the spacing of the reel to grass basket when the cutting unit is raised, allowing a closer positioning of the grass basket lip to the reel.
- Help to stabilize the cutting unit when lowering to turf, creating less movement than the current lift chain
- Lower the cutting unit on its rear roller first and pick the front roller first when raising the cutting unit, reducing turf marking on greens.

The new wide style pull link will help to eliminate excessive side-to-side movement of the cutting unit within the pull frame. Using the new pull links in conjunction with the new carrier frame adjustment bolt will allow for a small gap between grass basket lip and the reel. This will improve the collection of grass clippings and will keep the grass baskets from catching under the cutting unit side frames. The combination of the offset lift hoops and the wide pull links helps to eliminate uncut grass between cutting units on tight turns.

Cutting Unit Offset Lift Kit, 112-9293, is currently available through your authorized Toro Commercial Distributor.

Install the New Pull Link Assembly

1. Slide the sleeve back on each ball joint receiver and unhook the receiver from the cutting unit ball stud (Fig. 4).
2. Remove the roller shaft, washer and screw securing the anti-scalp roller and pull link assembly to the end of each front carrier frame (Fig. 4). Retain the ball joint receiver and the anti-scalp roller.

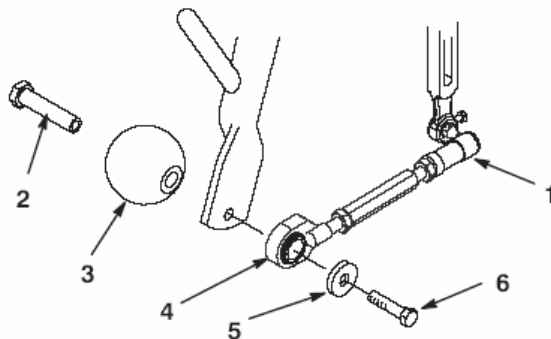


Figure 4

- | | |
|------------------------|-----------------------|
| 2. Ball joint receiver | 5. Pull link assembly |
| 3. Roller shaft | 6. Washer |
| 4. Anti-scalp roller | 7. Capscrew |
3. Thread a nut onto the new pull link and pull link extension (Fig. 5).
 4. Thread the new pull link extension and ball joint receiver onto the pull link. Do not tighten nuts at this time.
 5. Mount the anti-scalp roller, pull link assembly w/nylon bushings, spacer and (2) washers to the left end of the carrier frame with a capscrew and locknut (Fig. 5). Make sure the nylon bushings are in the pull links and the washers are positioned as shown in figure 5.
 6. Repeat procedure on right side of carrier frame.

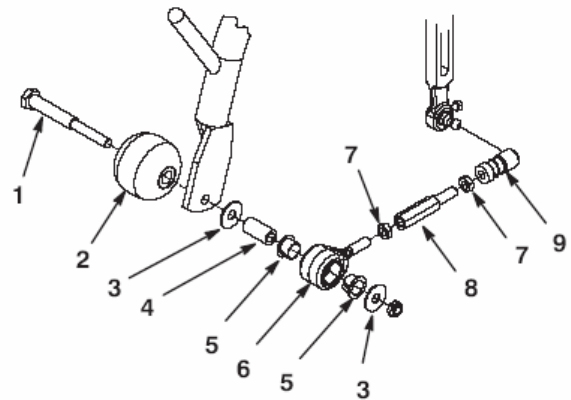


Figure 5

- | | |
|----------------------|------------------------|
| 1. Roller shaft | 6. Pull link assembly |
| 2. Anti-scalp roller | 7. Nut |
| 3. Washer | 8. Pull link extension |
| 4. Spacer | 9. Ball joint receiver |
| 5. Nylon bushing | |

7. Position the cutting unit under pull frame and hook up per instructions in Traction Unit Operator's Manual.
8. Slide the sleeve back on each ball joint receiver and hook the receiver onto the cutting unit groomer ball stud (Fig. 5).
9. Install the grass basket on the pull frame.
10. Adjust the pull link extension so the clearance between the lip of the grass basket and the reel blades or the front shield is 1/16 to 1/8 inch. (Fig. 5).

Note: Be sure the the basket lip is equidistant from the reel blades all across each reel. If the basket is too close to the reel, it is possible for the reel to contact the basket when the cutting unit is raised off the ground.

11. Tighten the nuts securing the adjustment.
12. Repeat procedure on remaining cutting units.

Adjusting the Transport Height

Check the transport height (Fig. 6) and adjust, if required, as follows:

1. Position the tractor on a level surface.
2. Remove the carrier frame adjusting screw and jam nut (Fig. 6). Install the new screw and jam nut (included in kit) but do not tighten nut at this time.

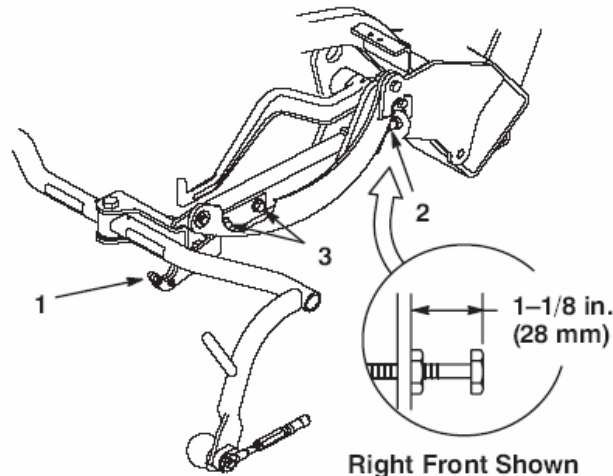


Figure 6

- | | |
|--|-----------------------------------|
| 1. Transport plate | 3. Transport plate mounting screw |
| 2. Carrier frame adjusting screw and nut | |

3. Set the distance from the top of the carrier frame adjusting screw (Fig. 6) to the back of the carrier frame to 1-1/8 in. (28 mm).
4. Loosen the transport plate mounting screws (Fig. 6).
5. Raise the cutting units to the transport position.

Important Do not raise the suspension to the transport position when the reel motors are in the holders in the traction unit frame. Damage to the motors or hoses could result.

6. Ensure each carrier frame is at the same height from the ground. If they are, proceed to step 8.
7. If the carrier frames are not at the same height, loosen the jam nut on the carrier frame adjusting screw (Fig. 6). Rotate the screw outward to raise and inward to lower. Tighten the jam nut after the proper height is obtained.
8. Rotate the transport plate until it locks the pull frame. Tighten the screws.