



Lift Arms and Shaft Kit

For Groundsmaster 7200/7210 Traction Unit

Model No. 112-9545

Installation Instructions

Installation

Loose Parts

Use the chart below to verify that all parts have been shipped.

Step	Description	Qty.	Use
1	Deck Lift Arm - R.H.	1	Replace the Deck Lift Arms and Lift Shaft
	Deck Lift Arm - L.H.	1	
	Deck Lift Shaft	1	
	Flange Bushing	2	
	Hardened Washer	2	
2	Control Arms	2	Replace the Transmission Control Arms
3	Cone Lock Nut	2	Replace the Motion Control Lever Nuts
4	Retaining Ring	2	Secure the Damper
5	Cable Clamp	1	Reposition the Vent Hose
	Cable Tie	1	
6	Flat Washer	2	Secure the Seat Belt
	Flat Washer .469 x .922	2	
7	Cap screw (1/4 x 1-3/4 inch)	2	Secure the Fuel Line
	Flat washer .281 x .625	2	
	Hose clamp	2	

Step 1

Replace the Deck Lift Arms and Deck Lift Shaft

Parts needed for this step:

1	Deck Lift Arm - R.H.
1	Deck Lift Arm - L.H.
1	Deck Lift Shaft
2	Flange Bushing
2	Hardened Washer

Procedure

1. Disengage the PTO, move the motion control levers to the neutral locked position and set the parking brake.
2. Move the throttle lever to the Slow position, stop the engine, remove the key, and wait for all moving parts to stop before leaving the operating position.
3. Lower the cutting unit. Block up the cutting unit so there is slack on the lift chains.
4. Disconnect the lift chains from the rear deck lift arms (Figure 1).
5. Disconnect the link ball joints from the rear lift arms. Pivot the link rods out of the lift arms (Figure 1).

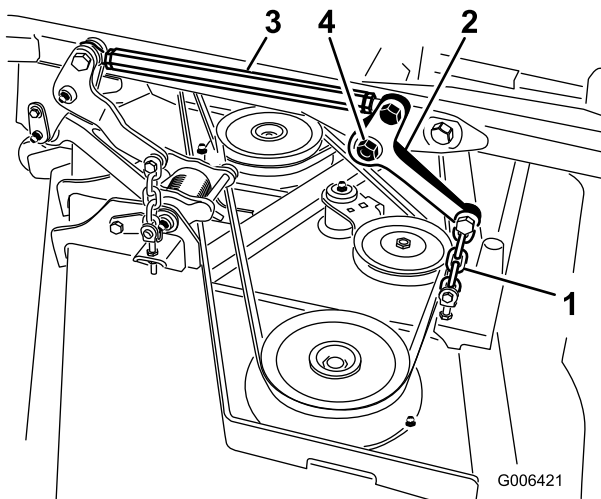


Figure 1

1. Rear lift chains
2. Rear lift arms
3. Link rod ball joint
4. Deck lift shaft nut

6. On the right side of the machine, remove the screw and pivot pin securing the hydraulic cylinder to the lift arm (Figure 2). Pivot the cylinder out of the lift arm.

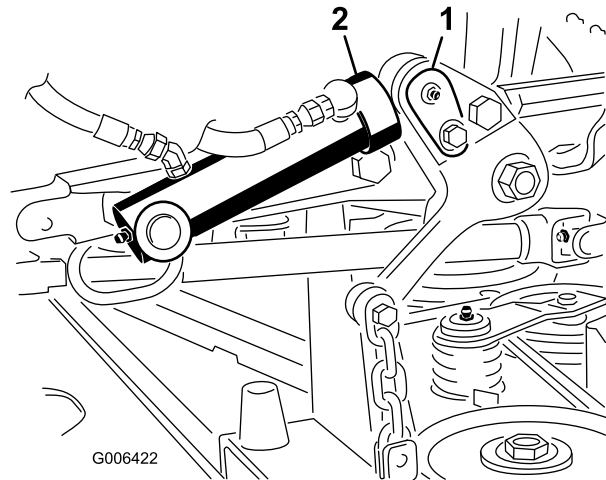


Figure 2

1. Pivot pin
2. Hydraulic cylinder

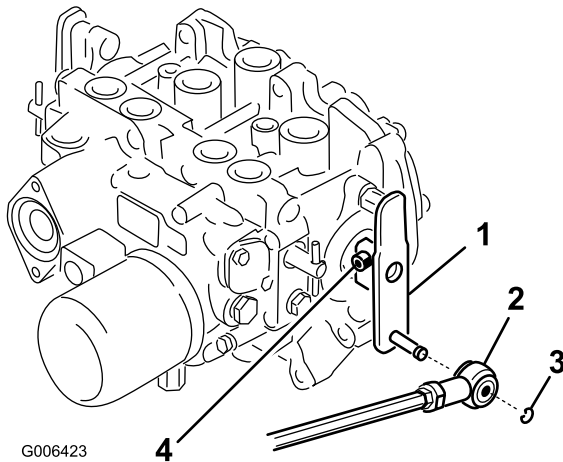
7. Remove the nut and washer from each end of the deck lift shaft (Figure 1). Discard the nuts and washers.
8. Remove the lift arms and the woodruff keys from the shaft (Figure 1). Discard the lift arms but retain the woodruff keys for reuse.
9. Remove the shaft from the carrier frame (Figure 1).
10. Remove and replace the bushings in the carrier frame, if damaged (Figure 1).
11. Reverse the procedure to install the new components. **Torque the shaft mounting nuts to 265 ft.-lb.**

Step**2****Replace the Transmission Control Arms****Parts needed for this step:**

2	Control Arms
---	--------------

Procedure

1. Remove the retaining ring securing the control rod end to the transmission control arm pin (Figure 3).
2. Remove the bolt securing the control arm to the transmission shaft (Figure 3). Remove the control arm and discard.

**Figure 3**

- | | |
|-----------------------------|-------------------|
| 1. Transmission control arm | 3. Retaining ring |
| 2. Control rod end | 4. Bolt |

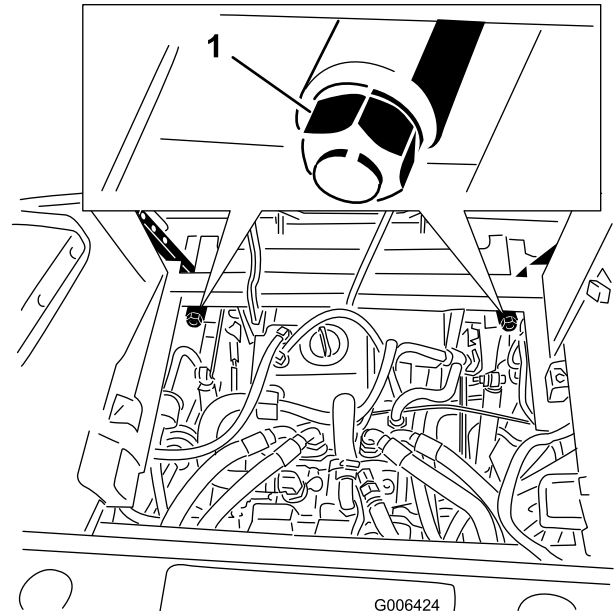
3. Slide the new control arm onto the transmission shaft.
4. Connect the control rod end to the control arm and secure with the retaining ring.
5. Secure control arm to the transmission shaft with the bolt. Torque the bolt to 264 in.-lb.
6. Repeat the procedure on the opposite side of the transmission.

Step**3****Replace the Motion Control Lever Nuts****Parts needed for this step:**

2	Cone Lock Nut
---	---------------

Procedure

1. Remove the mounting nut from each motion control lever hub (Figure 4). Discard the nut.

**Figure 4**

1. Motion control lever hub nut

2. Install a new cone nut onto each control lever hub and tighten until a light resistance is detected when moving the motion control levers in and out of the neutral lock position.

Step

4

Secure the Damper

Parts needed for this step:

2	Retaining Ring
---	----------------

Procedure

Push a retaining ring onto each damper mount pin (Figure 5).

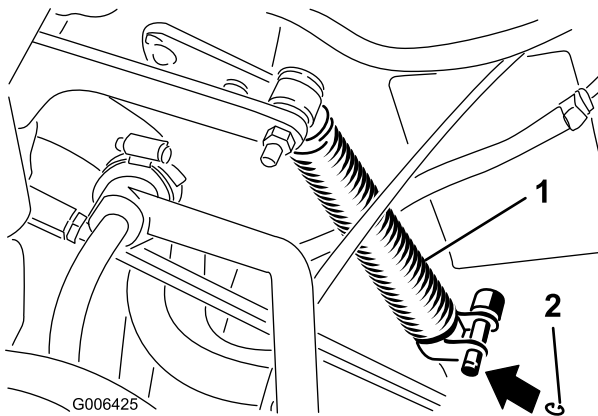


Figure 5

1. Damper 2. Retaining ring

Step

5

Reposition the Vent Hose

Parts needed for this step:

1	Cable Clamp
1	Cable Tie

Procedure

1. Loosen the nut and bolt securing the vent hose cable clamp to the frame (Figure 6).

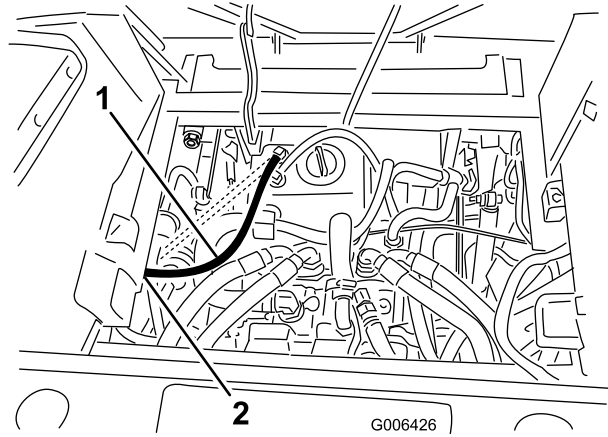


Figure 6

1. Vent hose 2. Cable clamp

2. Remove the cable tie securing the top of vent hose to the frame (Figure 7).

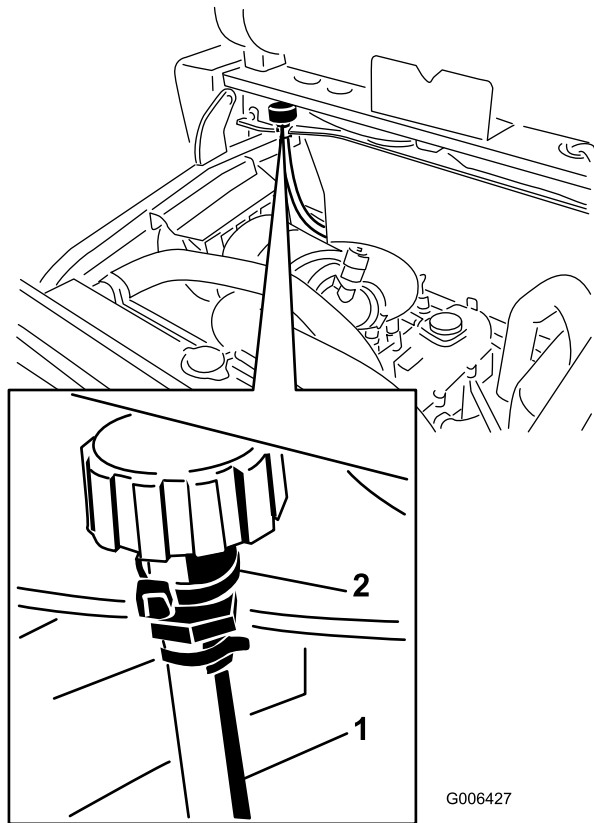


Figure 7

1. Vent hose 2. Cable tie

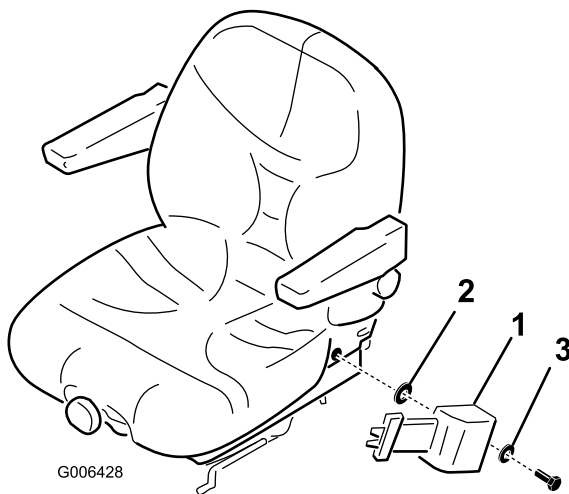
3. Reposition the hose away from damper as shown in Figure 6.
4. Re-secure the vent hose to the frame with a new cable tie.
5. Tighten the cable clamp fasteners.

Step**6****Secure the Seat Belt****Parts needed for this step:**

2	Flat Washer
2	Flat Washer .469 x .922

Procedure

1. Remove the cap screw and washer securing the seat belt to the side of the seat (Figure 8).
2. Apply Blue Loctite or equivalent to the threads of the cap screw.
3. Remount the seat belt to the side of the seat with the cap screw, a small washer and a large flat washer. Position the components as shown in Figure 8.

**Figure 8**

1. Seat belt
2. Large washer
3. Small washer

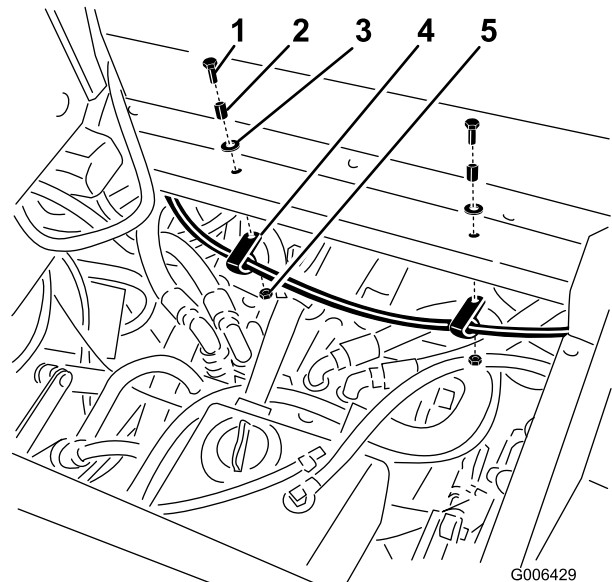
4. Repeat the procedure on the opposite side of the seat.

Step**7****Secure the Fuel Line****Parts needed for this step:**

2	Cap screw (1/4 x 1-3/4 inch)
2	Flat washer .281 x .625
2	Hose clamp

Procedure

1. Remove the two nuts and cap screws securing the spacers to the seat support (Figure 9).
2. Install two hose clamps onto the fuel hose under the seat support.
3. Using the new cap screws and washers, secure the spacers to the top of the seat support and the hose clamps to the underside of the seat support. Position the washers under the spacers (Figure 9).

**Figure 9**

1. Cap screw
2. Spacer
3. Washer
4. Hose clamp
5. Nut



Count on it.