



Replacement Hydrostat Assembly Sand Pro[®]/Infield Pro[®] 2020 and 3020

Model No. 114-0616

Parts Catalog

Ordering Replacement Parts

To order replacement parts, please supply the part number, the quantity, and the description of each part desired.

Understanding Reference Numbers

Each identified part in an illustration has a reference number. The reference number for a part also appears in the parts list, along with other information about the part.

This catalog uses two special reference number formats, one to indicate parts in a service assembly and another to indicate the quantity of a given part in an illustration.

Service Assembly Reference Numbers

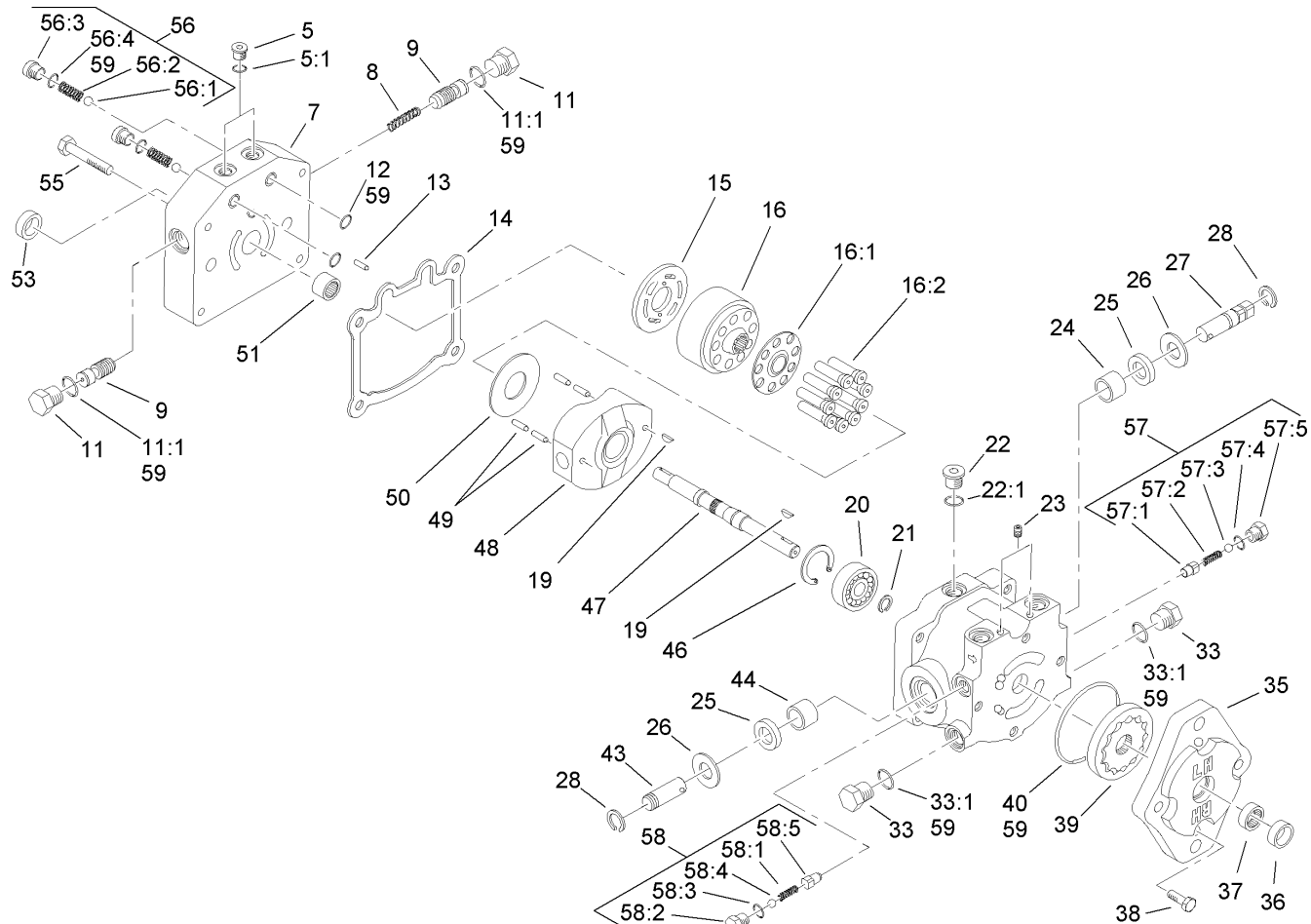
Parts in service assemblies have reference numbers in the form a:b. The a represents the reference number of the entire service assembly and the b represents a sequential number unique to each part within the service assembly.

For example, a wheel assembly might be identified by reference number 6, the tire by 6:1, the valve by 6:2, and the wheel by 6:3. When you order the assembly identified by reference number 6, you receive all parts identified by reference numbers 6:1, 6:2, and 6:3. However, you may also order any part individually. Reference numbers of this type appear in illustrations and in part lists.

Reference Numbers Indicating Quantity

In an illustration, if a reference number indicates more than one part, the reference number has the form nX y. The n represents the quantity of the part, the X is the multiplication symbol, and the y represents the reference number.

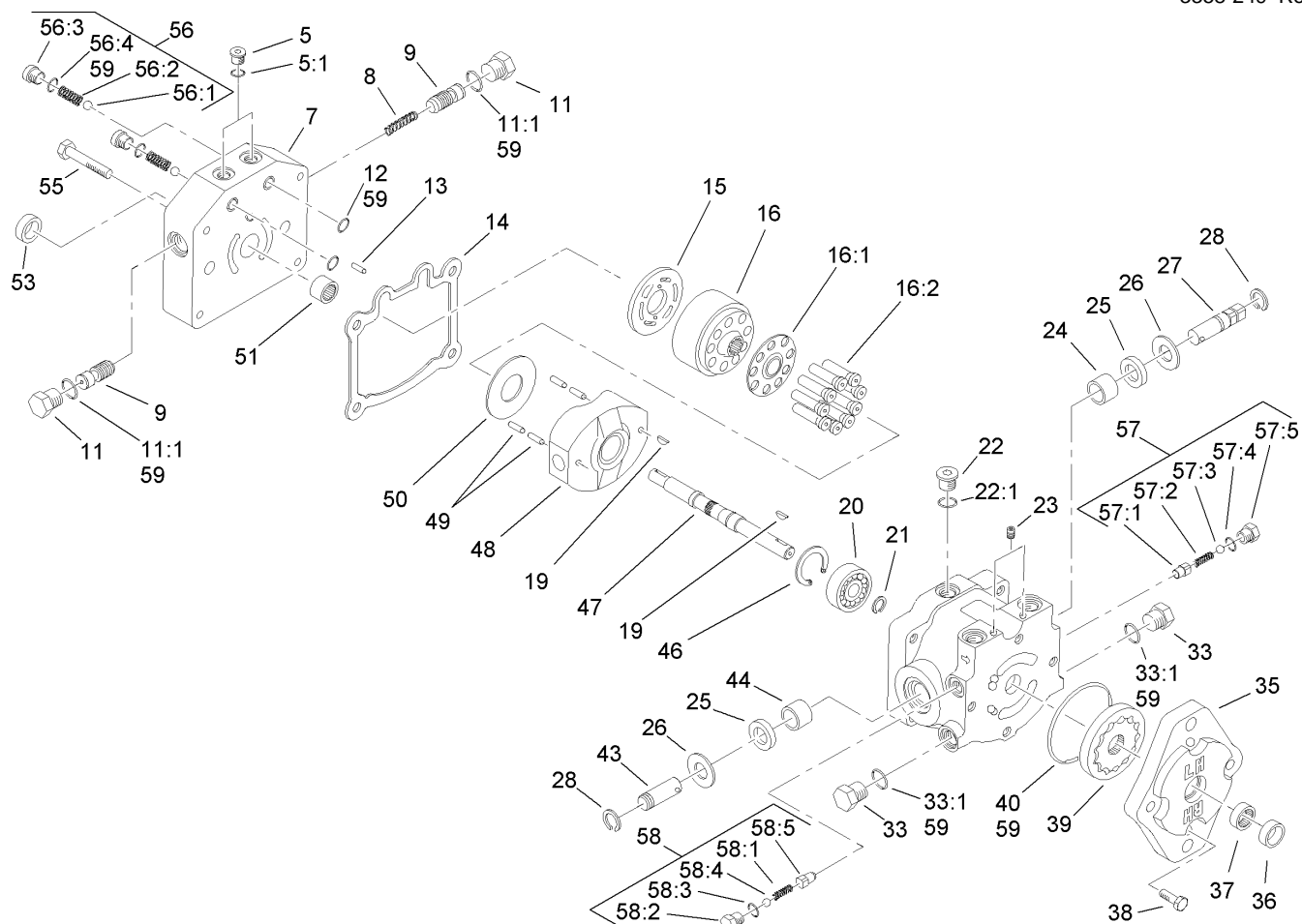
For example, in an illustration, the reference number 2X 37 means that two of the parts identified by reference number 37 are indicated.



Variable Hydraulic Piston Pump Assembly No. 114-0613

Ref	Part No.	Qty.	Description
5	92-8776	2	Plug-HSH
5:1	92-8777	1	O-Ring
7	112-7656	1	Cap-End
8	25-2610	1	Spring-Valve
9	95-5814	2	Valve-Acceleration
11	28-3440	2	Plug-Threaded
11:1	75-0240	1	O-Ring
12	112-7652	2	O-Ring
13	25-2430	1	Pin-Dowel
14	25-2400	1	Gasket
15	95-5811	1	Plate-Valve
16	48-1800	1	Cylinder Block Kit
16:1		1	Retainer-Slipper (Not Serviced Separately)
16:2		9	Piston ASM (Not Serviced Separately)
19	3257-32	2	Key-Woodruff
20	95-5809	1	Bearing-Ball
21	94-3996	1	Ring-Retaining
22	353-988	1	Plug-Hex
22:1	237-79	1	O-Ring
23	285-17	2	Plug-Pipe
24	88-8190	1	Bearing-Journal
25	25-3210	2	Seal-Lip

Ref	Part No.	Qty.	Description
26	25-2510	2	Washer-Flat
27	88-8180	1	Shaft-Trunnion
28	32151-46	2	Ring-Retaining
33	88-8210	2	Plug
33:1	237-80	1	O-Ring
35	114-0611	1	Housing-Pump, Charge
36	67-8060	1	Seal-Lip
37	67-8050	1	Bearing-Needle
38	322-4	4	Screw-HH
39	95-5812	1	Gerotor ASM
40	237-95	1	O-Ring
43	25-2500	1	Shaft-Trunnion
44	252-82	1	Bearing-Needle
46	32151-75	1	Ring-Retaining
47	95-5810	1	Shaft
48	25-2450	1	Plate-Swash, Variable
49	32121-91	4	Pin-Spring
50	25-2380	1	Plate-Thrust
51	46-8400	1	Bearing-Shaft
53	88-8230	1	Seal-Lip
55	323-45	4	Screw-HH
56	99-5689	1	Check Valve ASM
56:1	25-2490	1	Ball
56:2	25-2640	1	Spring-Valve



Variable Hydraulic Piston Pump Assembly No. 114-0613 (continued)

Ref	Part No.	Qty.	Description
56:3	25-2650	1	Plug-Valve, Check
56:4	237-86	1	O-Ring
57	49-8520	1	Implement Relief Kit
57:1	83-7260	1	Cone-Relief, Charge
57:2	25-2570	1	Spring-Valve
57:3	25-2470	1	Pack-Shim
57:4	237-86	1	O-Ring
57:5	25-2460	1	Plug-HH
58	49-8510	1	Valve Kit
58:1	25-2480	1	Spring-Valve
58:2	25-2460	1	Plug-HH
58:3	237-86	1	O-Ring
58:4	25-2470	1	Pack-Shim
58:5	83-7260	1	Cone-Relief, Charge
59	114-0618	1	Kit-Seal

