



## Replacement Hydrostat Assembly Sand Pro<sup>®</sup>/Infield Pro<sup>®</sup> 5020

Model No. 114-0617

### Parts Catalog

#### Ordering Replacement Parts

To order replacement parts, please supply the part number, the quantity, and the description of each part desired.

#### Understanding Reference Numbers

Each Identified part in an illustration has a reference number. The reference number for a part also appears in the parts list, along with other information about the part.

This catalog uses two special reference number formats, one to indicate parts in a service assembly and another to indicate the quantity of a given part in an illustration.

#### Service Assembly Reference Numbers

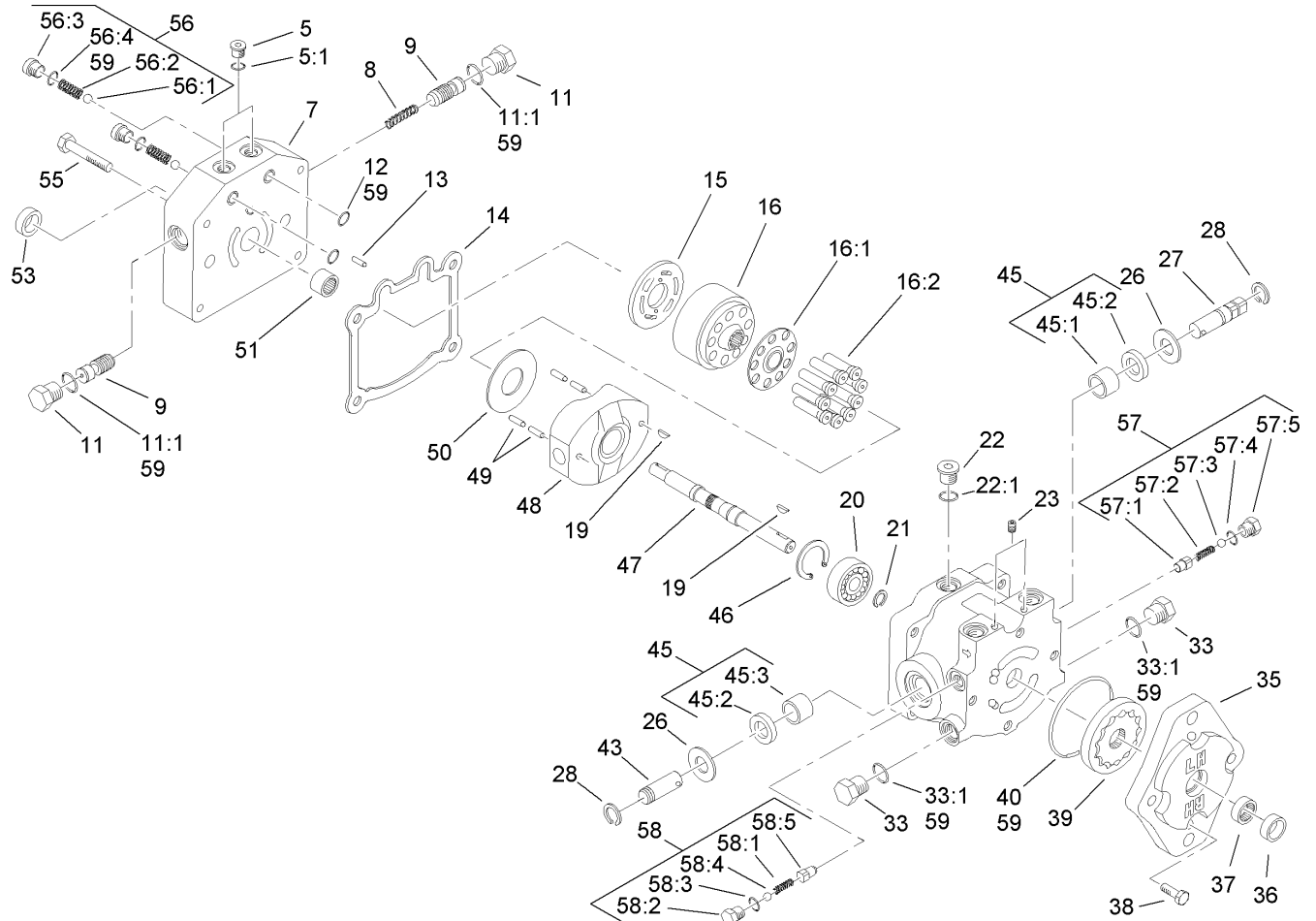
Parts in service assemblies have reference numbers in the form a:b. The a represents the reference number of the entire service assembly and the b represents a sequential number unique to each part within the service assembly.

For example, a wheel assembly might be identified by reference number 6, the tire by 6:1, the valve by 6:2, and the wheel by 6:3. When you order the assembly identified by reference number 6, you receive all parts identified by reference numbers 6:1, 6:2, and 6:3. However, you may also order any part individually. Reference numbers of this type appear in illustrations and in part lists.

#### Reference Numbers Indicating Quantity

In an illustration, if a reference number indicates more than one part, the reference number has the form nX y. The n represents the quantity of the part, the X is the multiplication symbol, and the y represents the reference number.

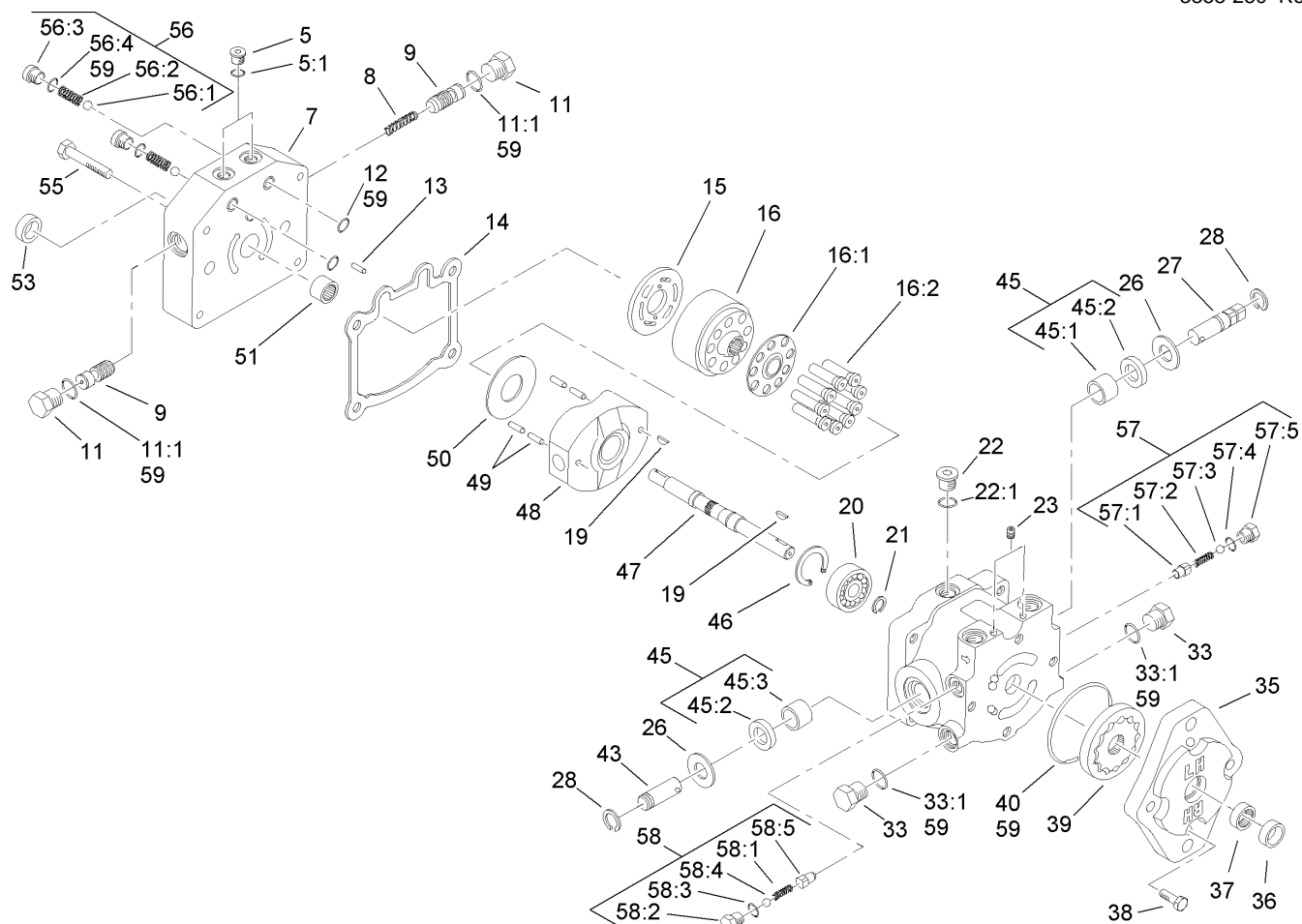
For example, in an illustration, the reference number 2X 37 means that two of the parts identified by reference number 37 are indicated.



## Variable Hydraulic Piston Pump Assembly No. 114-0614

Ref	Part No.	Qty.	Description
5	92-8776	2	Plug-HSH
5:1	92-8777	1	O-Ring
7	112-7656	1	Cap-End
8	25-2610	1	Spring-Valve
9	98-0920	2	Valve-Acceleration
11	28-3440	2	Plug-Threaded
11:1	75-0240	1	O-Ring
12	112-7652	2	O-Ring
13	25-2430	1	Pin-Dowel
14	25-2400	1	Gasket
15	88-8160	1	Plate-Valve
16	48-1800	1	Cylinder Block Kit
16:1		1	Retainer-Slipper (Not Serviced Separately)
16:2		9	Piston ASM (Not Serviced Separately)
19	3257-32	2	Key-Woodruff
20	95-5809	1	Bearing-Ball
21	94-3996	1	Ring-Retaining
22	353-988	1	Plug-Hex
22:1	237-79	1	O-Ring
23	285-17	2	Plug-Pipe
26	25-2510	2	Washer-Flat
27	25-2500	1	Shaft-Trunnion

Ref	Part No.	Qty.	Description
28	32151-46	2	Ring-Retaining
33	88-8210	2	Plug
33:1	237-80	1	O-Ring
35	114-0611	1	Housing-Pump, Charge
36	67-8060	1	Seal-Lip
37	67-8050	1	Bearing-Needle
38	322-4	4	Screw-HH
39	95-5812	1	Gerotor ASM
40	237-95	1	O-Ring
43	88-8180	1	Shaft-Trunnion
45	88-8170	1	Housing Kit
45:1	88-8190	1	Bearing-Journal
45:2	25-3210	2	Seal-Lip
45:3	252-82	1	Bearing-Needle
46	32151-75	1	Ring-Retaining
47	95-5810	1	Shaft
48	25-2450	1	Plate-Swash, Variable
49	32121-91	4	Pin-Spring
50	25-2380	1	Plate-Thrust
51	46-8400	1	Bearing-Shaft
53	88-8230	1	Seal-Lip
55	323-45	4	Screw-HH
56	99-5689	1	Check Valve ASM
56:1	25-2490	1	Ball



## Variable Hydraulic Piston Pump Assembly No. 114-0614 (continued)

Ref	Part No.	Qty.	Description				
56:2	25-2640	1	Spring-Valve				
56:3	25-2650	1	Plug-Valve, Check				
56:4	237-86	1	O-Ring				
57	49-8520	1	Implement Relief Kit				
57:1	83-7260	1	Cone-Relief, Charge				
57:2	25-2570	1	Spring-Valve				
57:3	25-2470	1	Pack-Shim				
57:4	237-86	1	O-Ring				
57:5	25-2460	1	Plug-HH				
58	49-8510	1	Valve Kit				
58:1	25-2480	1	Spring-Valve				
58:2	25-2460	1	Plug-HH				
58:3	237-86	1	O-Ring				
58:4	25-2470	1	Pack-Shim				
58:5	83-7260	1	Cone-Relief, Charge				
59	114-0618	1	Kit-Seal				

