



# Heat Shield Kit

## For Dingo TX Traction Unit

Model No. 114–1289

### Installation Instructions

## Installation

### Loose Parts

Use the chart below to verify that all parts have been shipped.

Step	Description	Qty.	Use
<b>1</b>	No parts required	–	Prepare the machine.
<b>2</b>	No parts required	–	Remove the existing heat shield.
<b>3</b>	Heat shield with large hole Heat shield Muffler clamp U-bolt Flat washer (5/16 inch) Flange nut (1/4 inch) Bolt (1/4 x 3/4 inches) Bolt (#10 x 1/2 inch) Flat washer (7/32 inch)	1 1 1 1 7 7 5 1 1	Install the existing heat shield.

#### Step

# 1

### Preparing the Machine

#### No Parts Required

#### Procedure

1. Park the machine on a flat surface, lower the loader arms to the ground, set the parking brake, stop the engine, and remove the key from the ignition.
2. Disconnect battery negative cable.
3. Allow all the machine components to thoroughly cool before installing the kit.



Contact with hot surfaces may cause personal injury.

Keep hands, feet, face, clothing and other body parts away from hot surfaces.

Allow all the machine components to thoroughly cool before installing the kit.

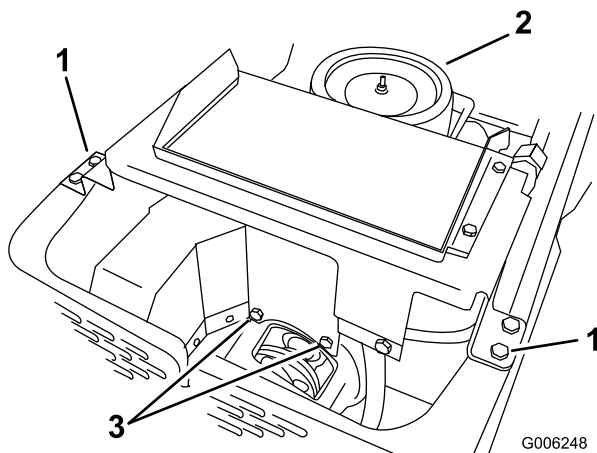
## Step 2

### Removing the Existing Heat Shield

#### No Parts Required

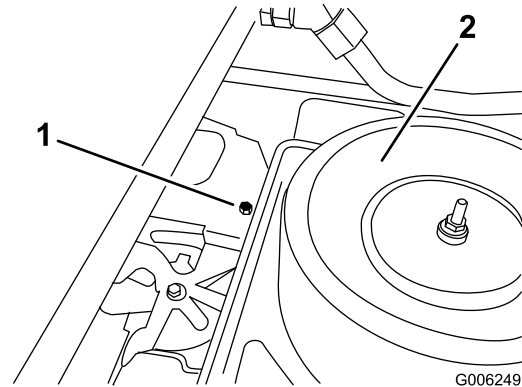
#### Procedure

1. Raise the hood.
2. Remove the 4 bolts holding the oil cooler to the frame of the machine (Figure 1).
3. Remove the 2 bolts and lockwashers from the heat shield attached to the pump mount (Figure 1). Retain these for installing the new heat shield.



**Figure 1**

1. Bolts holding oil cooler
2. Air cleaner
3. Bolts and lock washers attached to pump mount



**Figure 2**

1. Top bolt in heat shield
2. Air cleaner

## Step 3

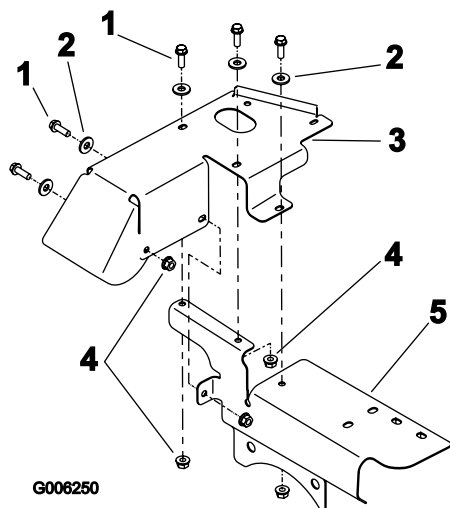
### Installing the New Heat Shield

#### Parts needed for this step:

1	Heat shield with large hole
1	Heat shield
1	Muffler clamp
1	U-bolt
7	Flat washer (5/16 inch)
7	Flange nut (1/4 inch)
5	Bolt (1/4 x 3/4 inches)
1	Bolt (#10 x 1/2 inch)
1	Flat washer (7/32 inch)

#### Procedure

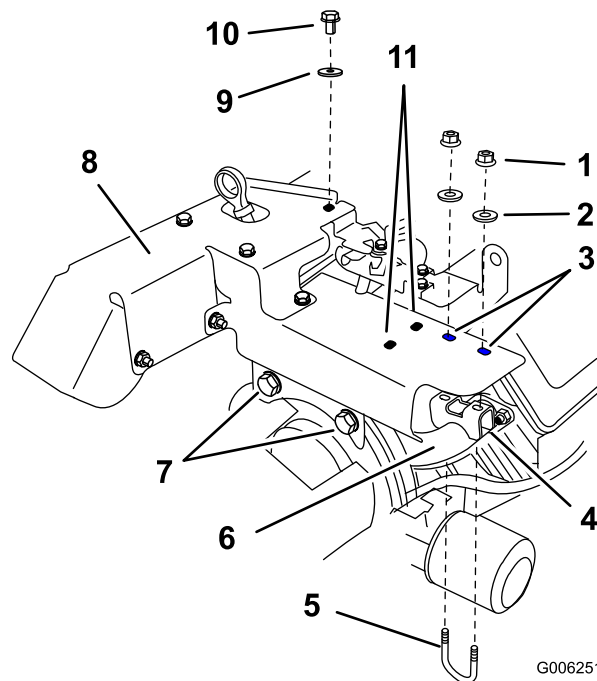
1. Bolt the two formed heat shield parts together with 5 bolts (1/4 x 3/4 inches), 5 flat washers (5/16 inch), and 5 flange nuts (1/4 inch) as shown in Figure 3.
4. Remove the air cleaner cover from the engine to gain access to the top bolt in the heat shield.
5. Remove the one bolt from the top of the heat shield (Figure 2).
6. Remove the heat shield assembly from the machine. Raise the oil cooler to allow more space to remove the heat shield.



**Figure 3**

- |                                |                          |
|--------------------------------|--------------------------|
| 1. Bolt (1/4 x 3/4 inches)     | 4. Flange nut (1/4 inch) |
| 2. Flat washer (5/16 inch)     | 5. Heat shield           |
| 3. Heat shield with large hole |                          |

2. Lift the oil cooler up and position the heat shield in front of the engine manifold.
3. Install the heat shield to the pump mount with the previously removed bolts and lock washers.
4. Install the heat shield to the top of the engine with a bolt (#10 x 1/2 inch) and a flat washer (7/32 inch) (Figure 4).
5. Install the cover onto the engine air cleaner.
6. Determine the correct position to install the muffler clamp. Refer to Figure 4 for the correct position and serial numbers.
7. Install the muffler clamp to the exhaust manifold with a U-bolt, 2 flat washers (5/16 inch), and 2 flange nuts (1/4 inch) (Figure 4).



**Figure 4**

- |  |  |
|--|--|
| 1. Flange nut (1/4 inch)                                   | 7. Install bolts and lock washers into the pump mount          |
| 2. Flat washer (5/16 inch)                                 | 8. Heat shield assembly  |
| 3. Holes for machines with serial numbers 270000001 and up | 9. Flat washer (7/32 inch)                                     |
| 4. Muffler clamp   | 10. Bolt (#10 x 1/2 inch)                                      |
| 5. U-bolt  | 11. Holes for machines with serial numbers 269999999 and below |
| 6. Exhaust manifold  |  |

8. Install the oil cooler to the frame of the machine with the previously removed bolts.
9. Close the hood.



**Count on it.**