



Count on it.

Form No. 3358-267 Rev A

Setup Instructions

Titan™ Z4800 and Z5200

Model No. 74812-Serial No. 270000001 and Up

Model No. 74814-Serial No. 270000001 and Up

Loose Parts

Note: Use the chart below to verify that all loose parts have been shipped.

Description	Qty	Use
Warranty Registration Form	1	Fill out and return to Toro
Key, Toro Ignition	1	Unit ignition
Key, Standard Ignition	1	
Hose, Connector	1	
Manual, Operator's	1	Read and view before operating machine
Manual, Parts	1	
DVD, Titan Safety	1	
Manual, Engine Operator's	1	

Checking Tire Pressure

1. Check the tire pressure in the drive and front caster tires. Proper inflation for all tires is 13 psi (90 kPa).
2. Adjust if necessary.

Fasten Seat

1. Remove the nut and bolt from the loose end of the lanyard.
2. Tilt seat downward and align lanyard to the hole in the side of the seat (See Figure 1).
3. Install bolt and nut. Tighten bolt and then loosen nut 1/4-1/2 turn so that lanyard end rotates freely. Verify that lanyard is free to rotate on both ends so that it pulls straight while supporting the seat.

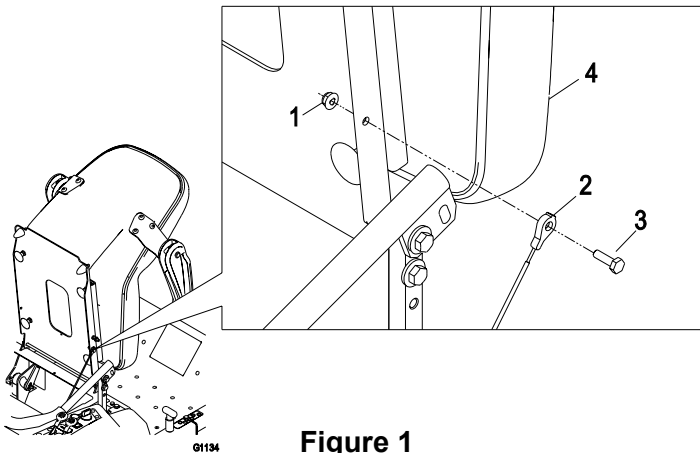




Figure 1

- | | |
|------------|---------|
| 1. Nut | 3. Bolt |
| 2. Lanyard | 4. Seat |

Servicing the Battery

WARNING: Battery posts, terminals, and related accessories contain lead compounds, chemicals known to the State of California to cause cancer and reproductive harm. **Wash hands after handling.**

The machine is shipped with a filled lead acid battery.

 DANGER 	
POTENTIAL HAZARD	
◆ Charging the battery may produce explosive gasses	
WHAT CAN HAPPEN	
◆ Battery gasses can explode causing serious injury.	
HOW TO AVOID THE HAZARD	
◆ Keep sparks, flames, or cigarettes away from battery.	
◆ Ventilate when charging or using battery in an enclosed space.	
◆ Make sure venting path of battery is always open once battery is filled with acid.	

1. Tilt seat up to gain access to the battery.
2. Check the voltage of the battery with a digital voltmeter. Locate the voltage reading of the battery in the table below and charge the battery for the recommended time interval to bring the charge up to a full charge of 12.6 volts or greater.

IMPORTANT: Make sure the negative battery cables are disconnected and the battery charger used for charging the battery has an output of 16 volts and 7 amps or less to avoid damaging the battery (see chart below for recommended charger settings).

Voltage Reading	Percent Charge	Maximum Charger Settings	Charging Interval
12.6 or greater	100%	16 volts / 7 amps	No Charging Required
12.4 – 12.6	75 – 100%	16 volts / 7 amps	30 Minutes
12.2 – 12.4	50 – 75%	16 volts / 7 amps	1 Hour
12.0 – 12.2	25 – 50%	14.4 volts / 4 amps	2 Hours
11.7 – 12.0	0 – 25%	14.4 volts / 4 amps	3 Hours
11.7 or less	0%	14.4 volts / 2 amps	6 Hours or More

CAUTION

POTENTIAL HAZARD

- ◆ If the ignition is in the “ON” position there is potential for sparks and engagement of components.

WHAT CAN HAPPEN

- ◆ Sparks could cause an explosion or moving parts could accidentally engage causing personal injury.

HOW TO AVOID THE HAZARD

- ◆ Be sure ignition switch is in the “OFF” position before charging the battery.

3. Connect the negative battery cables.

NOTE: If the positive cable is also disconnected, connect the **positive (red) cable** to the positive battery terminal **first**, then the negative (black) cable to the negative battery terminal. Slip insulator boot over the positive terminal.

NOTE: If time does not permit charging the battery, or if charging equipment is not available, connect the negative battery cables and run the vehicle continuously for 20 to 30 minutes to sufficiently charge the battery.

Installing the Motion Control Levers

1. Remove the bottom 3/8" x 1" bolt and spring disc washer from the control arm shaft. Loosen the upper 3/8" x 1" bolt and spring disc washer in the control lever so that the lever can rotate (See Figure 2).

2. Position the lever so the bottom hole aligns with hole in the control arm shaft. Install spring disc washer and bolt.
3. Repeat on opposite side of unit.

NOTE: There are two lever height options available. Place the levers in the top two holes to increase height of the levers, or in the bottom two holes to decrease the height of the levers.

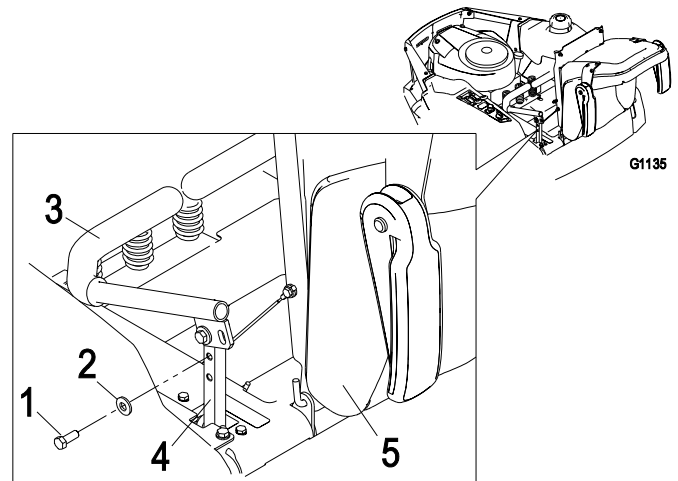


Figure 2

- | | |
|-------------------------|----------------------|
| 1. Bolt | 4. Control Arm Shaft |
| 2. Spring Disc Washer | 5. Seat |
| 3. Motion Control Lever | |

4. Align the levers front/rear position. With the levers in the neutral position, loosen the hardware and adjust the levers sliding and/or tilting the lever(s) forward or backward until properly aligned and tighten hardware (Figure. 3).

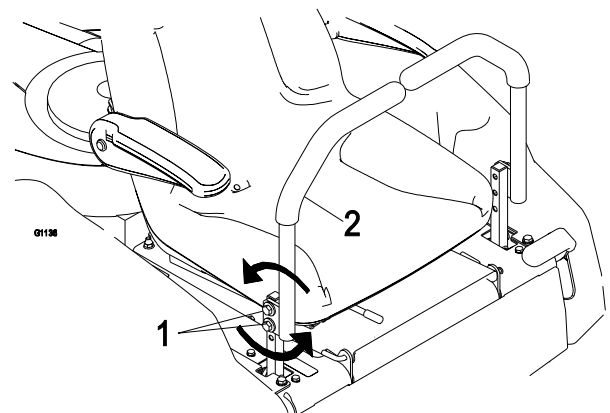


Figure 3

- | | |
|-------------|-------------------------|
| 1. Hardware | 2. Motion Control Lever |
|-------------|-------------------------|

Servicing the Engine

Engine is shipped with oil; check oil level and if necessary fill to the appropriate level with oil as specified in Engine Owner's Manual.

Servicing the Hydraulic Oil

The machine is shipped with hydraulic oil. Verify level on Expansion Tank. (See Figure 5)

1. Start engine and drive the machine forward and backward for a few minutes to allow any extra air to purge out of the hydraulic system.
2. Stop engine and wait for all moving parts to stop. Remove key and engage parking brake.
3. Check expansion tank and if necessary add MOBIL 1 15W-50 synthetic motor oil to the FULL COLD line.

NOTE: The proper amount of oil should have been added at the factory. If the reservoir is slightly over full, do not remove fluid. The level will go down once all of the air is purged from the system.

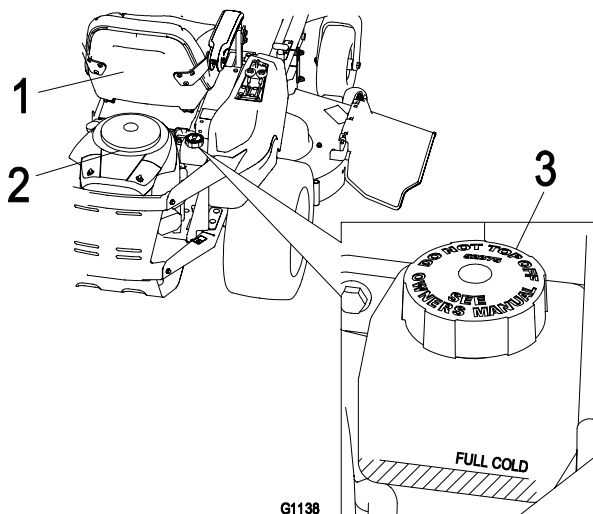


Figure 5

1. Seat
2. Engine
3. Expansion Tank

4. Replace expansion tank cap and tighten until snug. **Do not overtighten.**

Installing the Discharge Deflector

1. Install discharge deflector (Figure 6).
2. Place the spring on the rod. Slide rod, straight end, through the front discharge deflector bracket, discharge deflector, and rear deflector bracket.
3. Make sure that the spring and rod are installed so that the rod is retained from sliding out by the front bracket and the spring holds the discharge deflector in the down position. Refer to (Figure 6) for proper orientation.

Important: The discharge deflector must be spring loaded in the down position. Lift the deflector up to test that it snaps to the full down position.

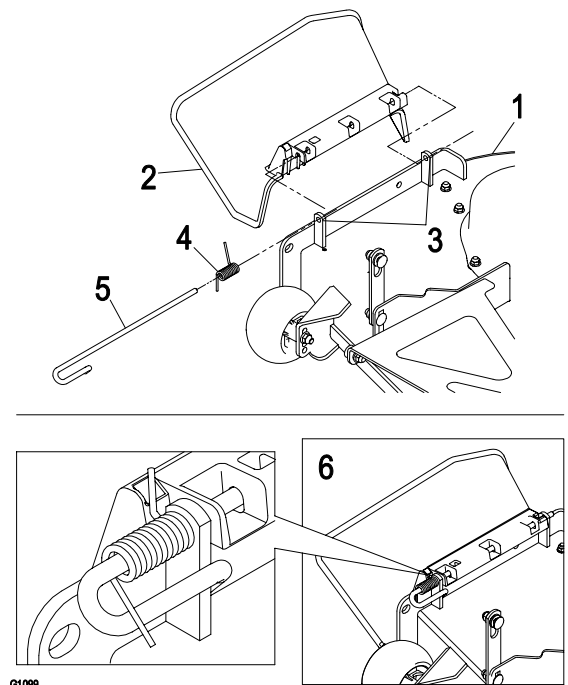


Figure 6

1. Mower deck
2. Discharge deflector
3. Discharge deflector bracket
4. Spring
5. Rod
6. Assembled view