



## Switch Adapter Kit Groundsmaster® 220 Series Traction Unit

Model No. 114-4111

### Parts Catalog

#### Ordering Replacement Parts

To order replacement parts, please supply the part number, the quantity, and the description of each part desired.

#### Understanding Reference Numbers

Each Identified part in an illustration has a reference number. The reference number for a part also appears in the parts list, along with other information about the part.

This catalog uses two special reference number formats, one to indicate parts in a service assembly and another to indicate the quantity of a given part in an illustration.

#### Service Assembly Reference Numbers

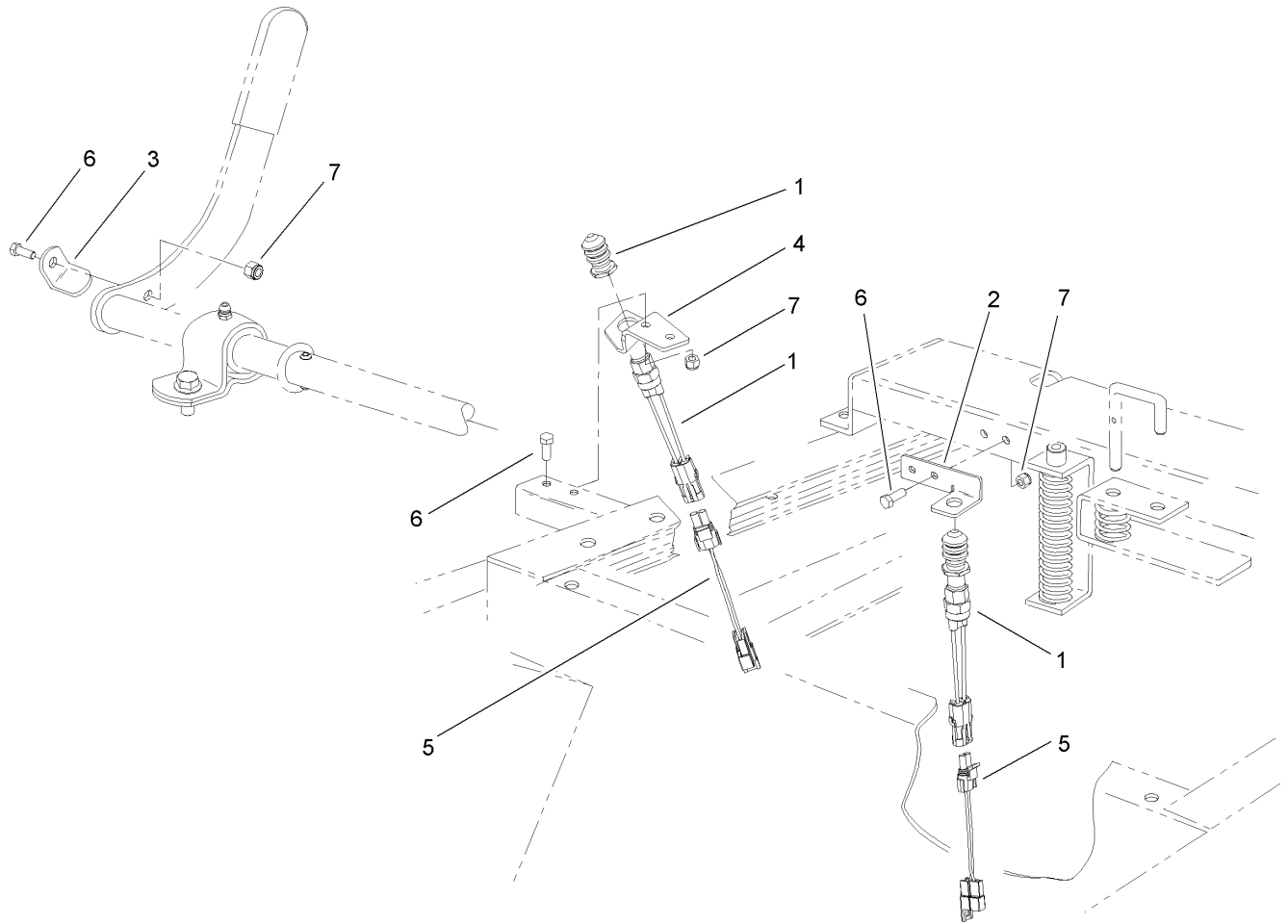
Parts in service assemblies have reference numbers in the form a:b. The a represents the reference number of the entire service assembly and the b represents a sequential number unique to each part within the service assembly.

For example, a wheel assembly might be identified by reference number 6, the tire by 6:1, the valve by 6:2, and the wheel by 6:3. When you order the assembly identified by reference number 6, you receive all parts identified by reference numbers 6:1, 6:2, and 6:3. However, you may also order any part individually. Reference numbers of this type appear in illustrations and in part lists.

#### Reference Numbers Indicating Quantity

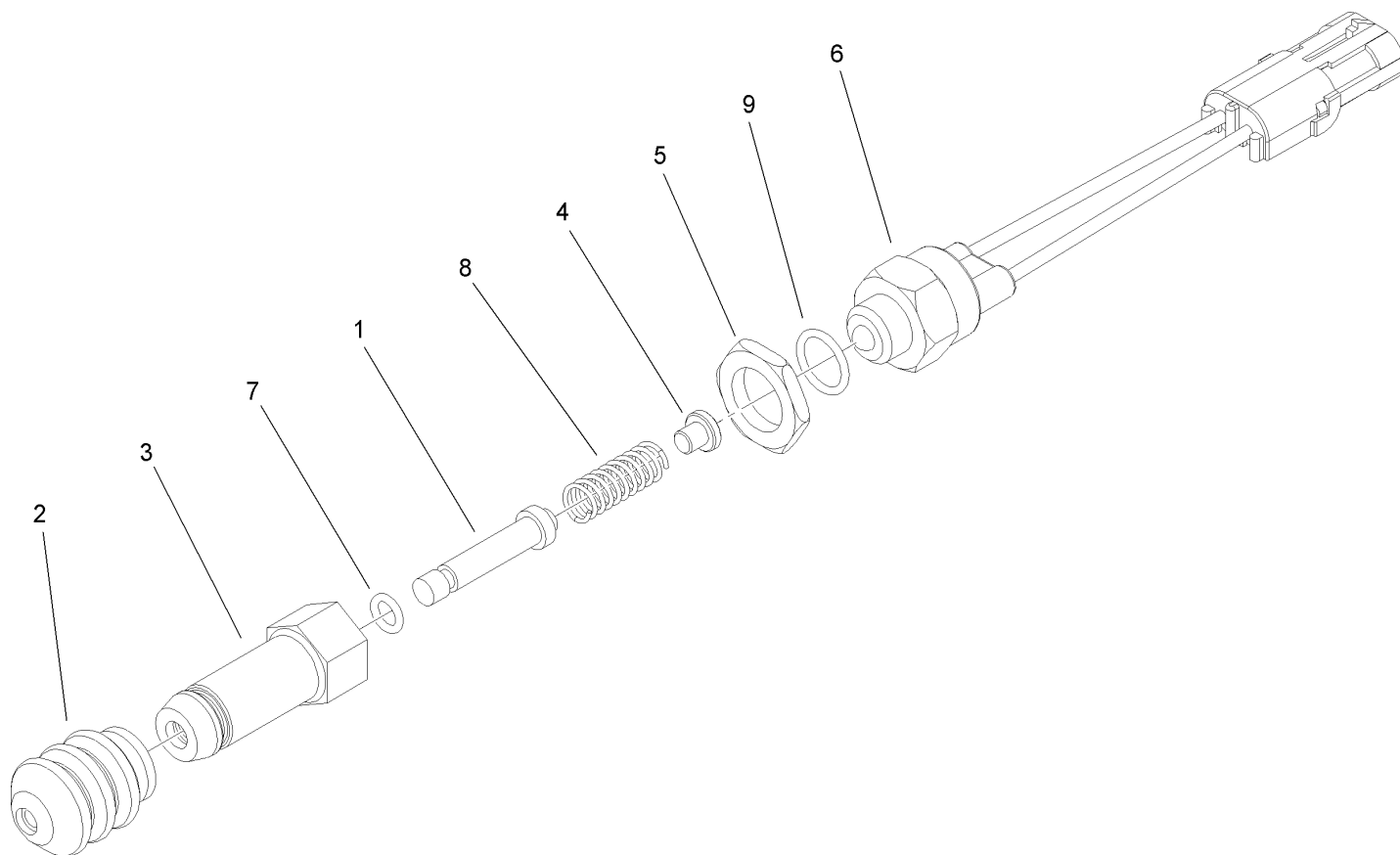
In an illustration, if a reference number indicates more than one part, the reference number has the form nX y. The n represents the quantity of the part, the X is the multiplication symbol, and the y represents the reference number.

For example, in an illustration, the reference number 2X 37 means that two of the parts identified by reference number 37 are indicated.



## Switch Adapter Assembly

Ref	Part No.	Qty.	Description
1	43-9071	2	Limit Switch ASM
2	114-4107	1	Bracket-Seat Switch
3	114-4108	1	Bracket-Switch Actuator
4	114-4109	1	Bracket-PTO Switch
5	114-3371	2	Harness-Wire, Seat Adapter
6	321-4	5	Screw-HH
7	3296-16	5	Nut-Lock, NI

## Limit Switch Assembly No. 43-9071

Ref	Part No.	Qty.	Description
1	43-8860	1	Plunger-Switch
2	43-8870	1	Boot-Switch
3	43-8620	1	Pin-Guide, Switch
4	43-8610	1	Guide
5	218-461	2	Nut-HH
6	72-4320	1	Switch-Ball
7	237-7	1	O-Ring
8	43-8600	1	Spring-Compression
9	237-30	1	O-Ring

