



## Power Box Rake Compact Utility Loaders

Model No. 22425 - 270000051 and up.

### Parts Catalog

---

#### Ordering Replacement Parts

To order replacement parts, please supply the part number, the quantity, and the description of each part desired.

#### Understanding Reference Numbers

Each identified part in an illustration has a reference number. The reference number for a part also appears in the parts list, along with other information about the part.

This catalog uses two special reference number formats, one to indicate parts in a service assembly and another to indicate the quantity of a given part in an illustration.

#### Service Assembly Reference Numbers

Parts in service assemblies have reference numbers in the form a:b. The a represents the reference number of the entire service assembly and the b represents a sequential number unique to each part within the service assembly.

For example, a wheel assembly might be identified by reference number 6, the tire by 6:1, the valve by 6:2, and the wheel by 6:3. When you order the assembly identified by reference number 6, you receive all parts identified by reference numbers 6:1, 6:2, and 6:3. However, you may also order any part individually. Reference numbers of this type appear in illustrations and in part lists.

#### Reference Numbers Indicating Quantity

In an illustration, if a reference number indicates more than one part, the reference number has the form nX y. The n represents the quantity of the part, the X is the multiplication symbol, and the y represents the reference number.

For example, in an illustration, the reference number 2X 37 means that two of the parts identified by reference number 37 are indicated.

## Contents

Description	Page	Description	Page
Frame Assembly	..... 3	Drive and Roller Assembly	..... 5
Castor Wheel Assembly No. 107-9410	..... 4	Mounting Assembly	..... 7

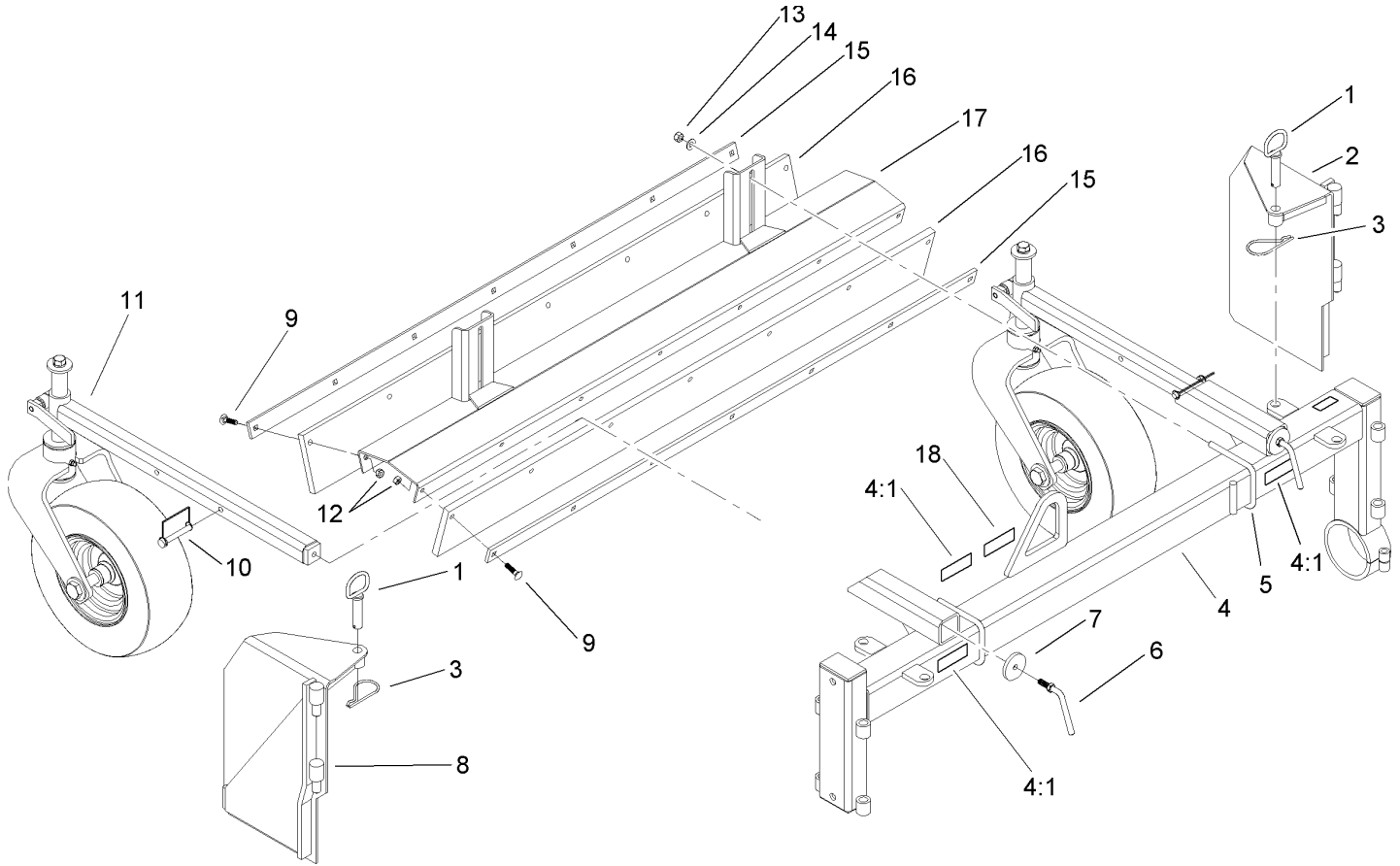
## Part Description Abbreviations

Part descriptions in this catalog may include the following abbreviations.

AR. .... as required	HYD. .... hydraulic
ASM. .... assembly	LH. .... left hand
BBC. .... blade brake clutch	NI. .... nylon insert
CARR. .... carriage	NPTF. .... national pipe thread fine
DEG. .... degrees	PFH. .... phillips flat head
EXT. .... external	PPH. .... phillips pan head
FH. .... flat head	PPHTF. .... phillips pan head thread forming
GA. .... gauge	PRH. .... phillips round head
HD. .... heavy-duty	PTH. .... phillips truss head
HF. .... hex flange	PTO. .... power-take-off
HH. .... hex head	RH. .... right hand
HHF. .... hex head flange	ROPS. .... roll-over protection system
HHFTF. .... hex head flange thread forming	SFH. .... slotted fillister head
HJ. .... hex jam	SHH. .... slotted hex head
HLH. .... hex lag head	SHWH. .... slotted hex washer head
HOC. .... height-of-cut	SPH. .... slotted pan head
HSBH. .... hex socket button head	SQH. .... square head
HSFH. .... hex socket flat head	SRH. .... slotted round head
HSH. .... hex socket head	STD. .... standard
HWH. .... hex washer head	TAP. .... self tapping
HWHTF. .... hex washer head thread forming	TTH. .... torx truss head

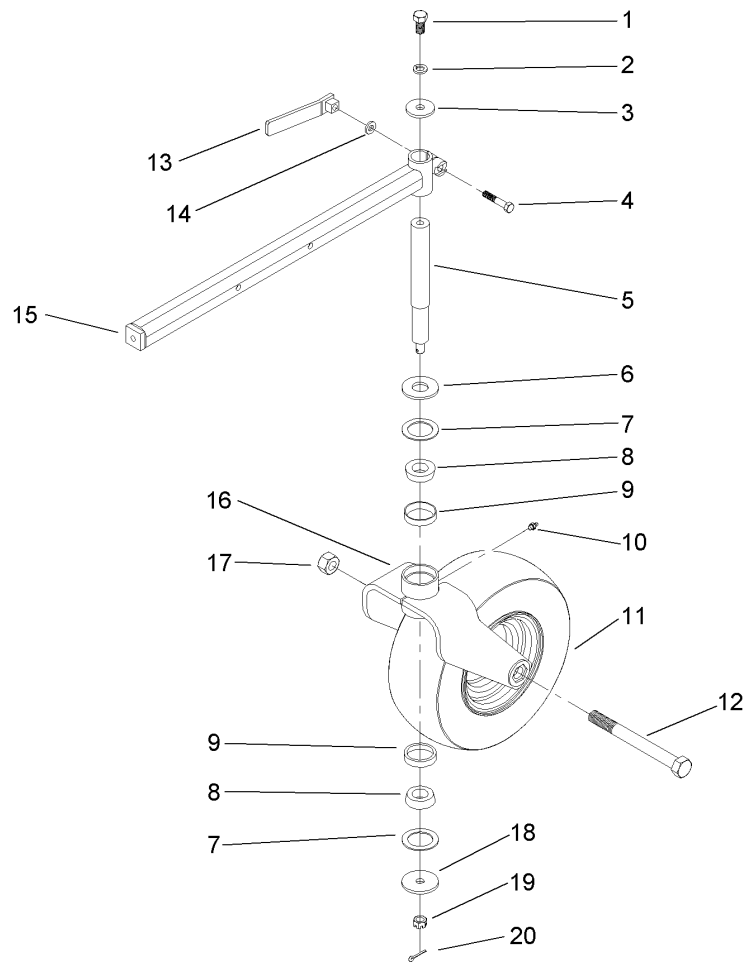
## Footnotes

- ❶ Not illustrated



### Frame Assembly

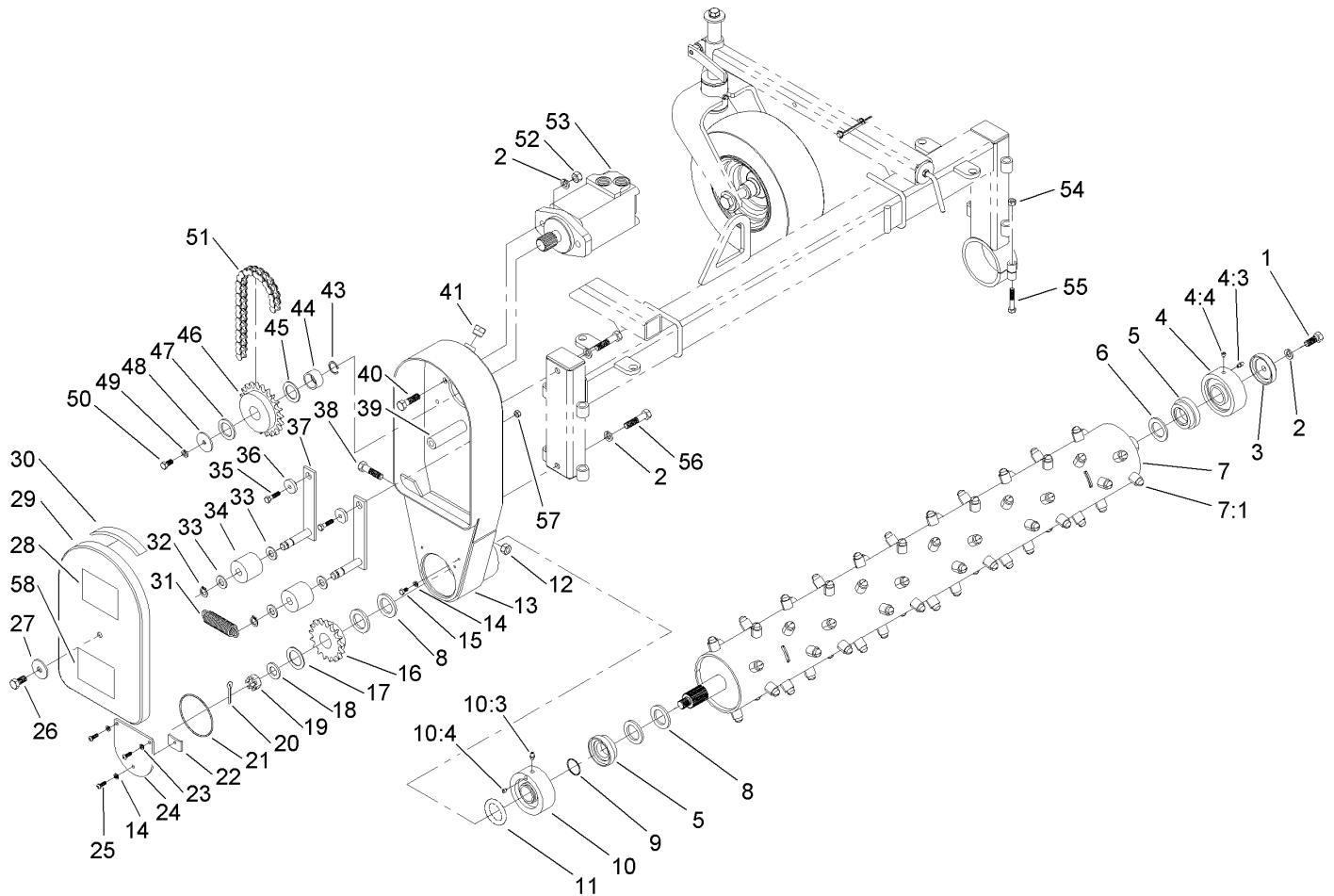
Ref	Part No.	Qty.	Description
1	107-9461	2	Pin Assembly
2	107-9405	1	Bracket-Gate, RH
3	92-2762	2	Pin-Hair
4	107-9402	1	Frame-Main, Rake
4:1	93-7321	3	Decal-Danger
5	107-9421	2	U-Bolt
6	107-9422	2	Handle-Arm, Castor
7	107-9463	2	Washer-Flat
8	107-9406	1	Bracket-Gate, LH
9	3230-3	14	Screw-CARR
10	93-4696	2	Pin-Hitch
11	107-9410	2	Castor Wheel ASM
12	32152-1	14	Nut-Lock, Cone
13	3296-39	4	Nut-Lock, NI
14	100-4852	4	Washer-Hardened
15	107-9409	2	Strap-Barrier
16	107-9408	2	Barrier-Rake
17	107-9407	1	Mount-Barrier
18	71-0600	1	Decal

## Castor Wheel Assembly No. 107-9410

Ref	Part No.	Qty.	Description
1	325-4	1	Screw-HH
2	3253-7	1	Washer-Lock
3	84-1560	1	Washer-Thrust
4	3211-9	1	Screw-HH
5	107-9432	1	Shaft-Castor
6	104-6126	1	Washer-Flat
7	107-9459	2	Washer-Felt
8	254-94	2	Bearing-Cone, Tapered
9	254-72	2	Bearing-Cup, Tapered
10	302-5	1	Fitting-Grease
11	107-9433	1	Wheel And Tire ASM
12	107-9460	1	Bolt-HH
13	107-9434	1	Handle-Castor
14	52-5980	1	Spacer-Pivot Arm, Rear
15	107-9435	1	Arm-Support, Castor
16	107-9436	1	Fork-Castor
17	3296-51	1	Nut-Lock, NI
18	107-9462	1	Washer-Flat
19	3297-3	1	Nut-Hex, Slotted
20	700170	1	Pin-Cotter

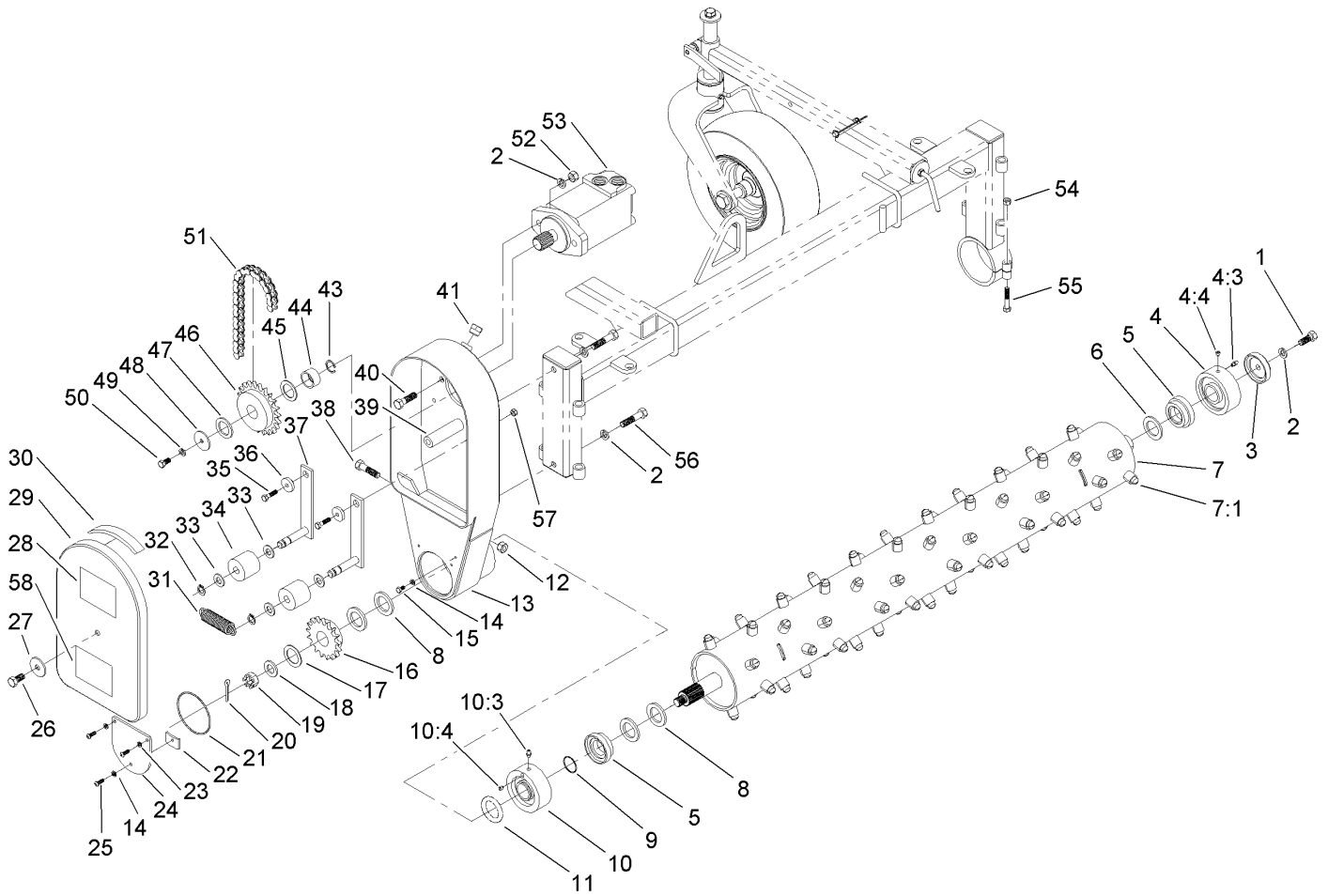
--	--	--	--



## Drive and Roller Assembly

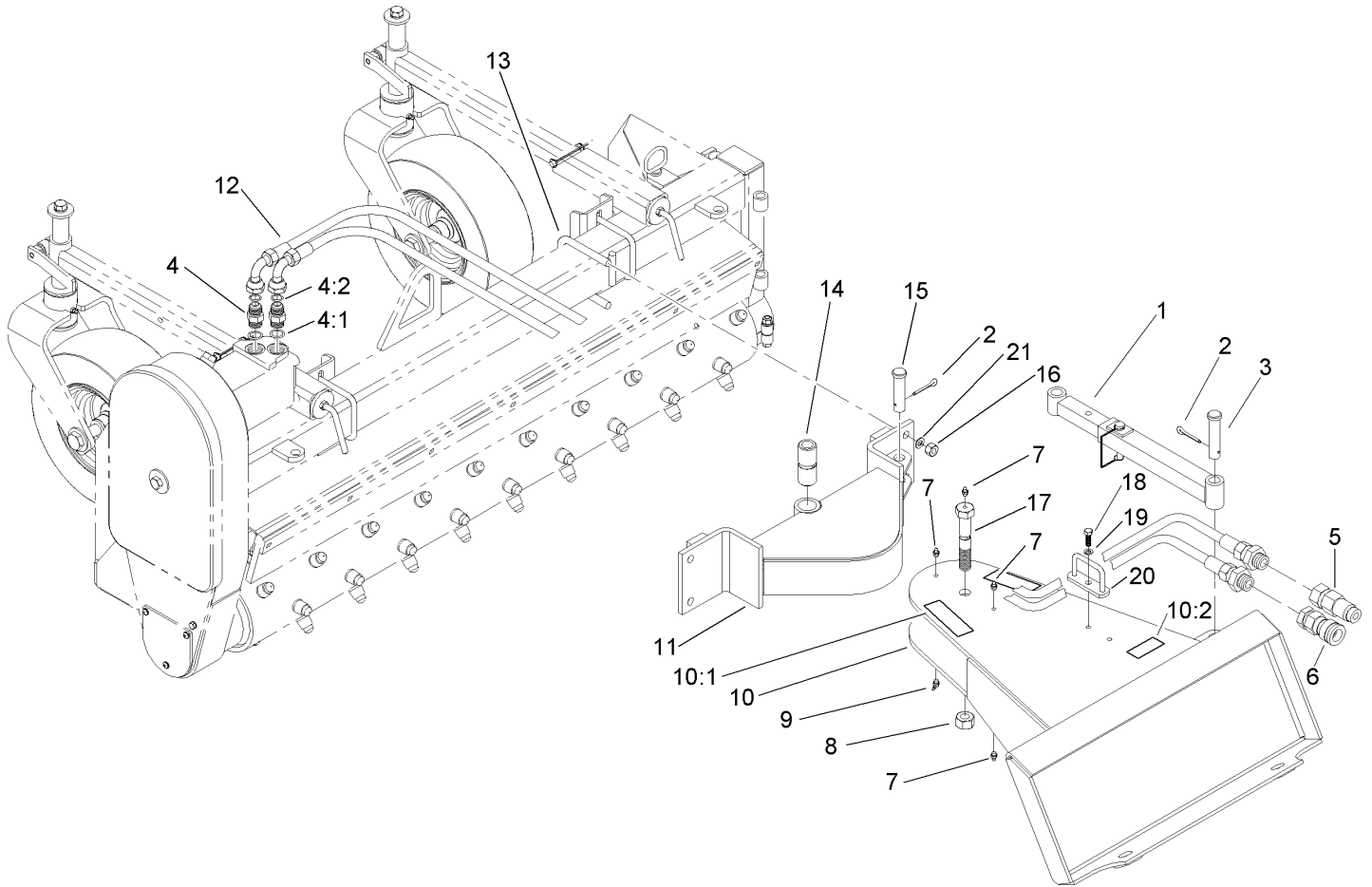
Ref	Part No.	Qty.	Description
1	3213-2	1	Screw-HH
2	3253-7	5	Washer-Lock
3	114-1321	1	Cap-Bearing
4	114-1323	1	Idle Bearing ASM
4:3	302-5	1	Fitting-Grease
4:4	106-9662	1	Screw-Set, HSH
5	114-1324	2	Collar-Bearing
6	107-9450	1	Bushing-Machined
7	107-9403	1	Roller-Tooth, Carbide
7:1	108-5559	76	Tooth-Rake
8	107-9454	4	Spacer-Flat
9	107-9455	1	O-Ring
10	114-1322	1	Drive Bearing ASM
10:3	302-5	1	Fitting-Grease
10:4	106-9662	1	Screw-Set, HSH
11	107-9448	1	O-Ring
12	98-8088	1	Nut-Lock
13	107-9404	1	Case-Chain
14	107-9468	2	Washer-Oring
15	321-2	1	Screw-HH
16	107-9416	1	Sprocket-17 Tooth
17	107-9451	1	Bushing-Machined
18	113440	1	Washer-Wheel
19	32136-5	1	Nut-Hex, Slotted

Ref	Part No.	Qty.	Description
20	3272-19	1	Pin-Cotter
21	107-9447	1	O-Ring
22	107-9414	1	Tab-Cover
23	3253-3	2	Washer-Lock
24	107-9413	1	Cover-Lower, Chain
25	3274-69	3	Screw-HSBH
26	325-4	1	Screw-HH
27	84-1560	1	Washer-Thrust
28	62-5550	1	Decal
29	107-9411	1	Cover-Chain
30	107-9412	1	Seal-Cover
31	107-9446	1	Spring-Extension
32	32151-62	2	Ring-Retaining
33	3256-15	2	Washer-Flat
34	107-9419	2	Roller-Tensioner
35	322-6	2	Screw-HH
36	107-9445	2	Bushing-Pivot
37	107-9418	2	Arm-Tensioner
38	3213-5	1	Screw-HH
39	107-9420	1	Rod-Cover, Spacer
40	325-7	2	Screw-HH
41	107-9449	1	Plug-Breather
43	100-6597	1	Ring-Snap, External
44	107-9423	1	Collar-Sprocket



### Drive and Roller Assembly (continued)

Ref	Part No.	Qty.	Description
45	107-9453	1	Bushing-Machined
46	107-9417	1	Sprocket-22 Tooth
47	107-9452	1	Bushing-Machined
48	95-1823	1	Washer
49	3253-21	2	Washer-Lock
50	323-6	1	Screw-HH
51	107-9438	1	Chain-Roller
52	3217-9	2	Nut-HH
53	107-9437	1	HYD Motor ASM
●53:1	100-1447	1	Seal Kit
54	3217-7	1	Nut-Hex
55	323-10	1	Screw-HH
56	325-12	2	Screw-HH
57	32152-1	2	Nut-Lock, Cone
58	107-9464	1	Decal



## Mounting Assembly

Ref	Part No.	Qty.	Description
1	107-9427	1	Bar-Adjustment
2	3272-19	2	Pin-Cotter
3	107-9457	1	Pin-Clevis
4	340-6	2	Fitting-HYD, Straight
4:1	237-30	1	O-Ring
4:2	237-80	1	O-Ring
5	100-4701	1	Nipple-Connect, Pressure
5:1	100-6120	1	Seal Kit
6	104-6134	1	Coupler-Face, Flush
7	302-5	3	Fitting-Grease
8	97-1208	1	Locknut-Stover
9	302-11	1	Fitting-Lube, 45 DEG
10	107-9426	1	Attachment Mount ASM
10:1	93-9367	2	Decal-Warning
10:2	100-4708	1	Decal-Warning
11	107-9425	1	Mount-Pivot
12	107-9439	2	HYD Hose ASM
13	107-9458	2	U-Bolt
14	107-9428	1	Bushing-Pivot
15	107-9456	1	Pin-Clevis
16	3217-9	4	Nut-HH
17	107-9429	1	Bolt-Pivot
18	322-5	1	Screw-HH
19	3253-4	1	Washer-Lock

Ref	Part No.	Qty.	Description
20	107-9431	1	Loop-Hose
21	3253-7	4	Washer-Lock

