



Threaded Pivot Arm Update Kit

For 22in Recycler® Lawn Mowers with Personal Pace® Handle

Model No. 114-2683

Installation Instructions

Parts needed for this step:

1	Thrust washer (110-7191)
2	Pivot arm (108-9781)
2	Spring arm (108-9780)
2	Bearing retainer assembly (114-2684)

Procedure

1. Remove the left and right hand wheel assemblies.
2. Remove the left and right hand kliprings, thrust washers, and pinion gears.
3. Remove and discard the retaining ring (32151-36) from the bearing retainers on the left and right hand sides.
4. Remove the left hand height-of-cut plate from the mower housing.
5. Slide the transmission assembly out from the right hand height-of cut plate assembly.

Note: Ensure that the transmission is free from both height-of-cut plates.

6. Install the new bearing retainer assemblies through the height-of-cut plate assemblies (Figure 1).

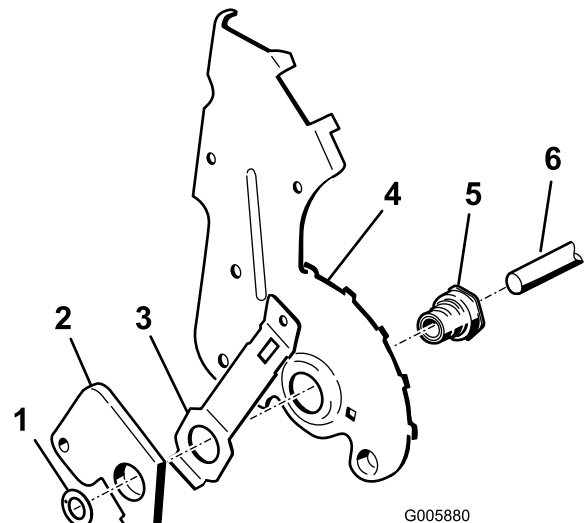


Figure 1

1. Thrust washer
 2. Pivot arm
 3. Spring arm
 4. Height-of-cut plate (not included)
 5. Bearing retainer assembly
 6. Transmission drive shaft (not included)
7. Insert the new spring arm over the thread portion of the bearing retainer (Figure 1) .
 8. Put the spring arm in position (Figure 1).
 9. Thread the bearing retainer assembly into the pivot arm (Figure 1).
 10. Torque the bearing retainer assembly to 75 to 85 ft-lb.
 11. Install the transmission drive shaft through the right hand height-of-cut plate assembly.
 12. Slide the left hand height-of-cut plate onto the transmission shaft.
 13. Install the left hand height-of-cut plate assembly to the mower housing.
 14. Replace the non-keyed steel thrust washer with the non-keyed plastic thrust washer on the left hand side only (Figure 1).
 15. Assemble the left and right hand gear clusters.
 16. Install the left and right hand wheel assemblies.