



# Tank Agitation Kit

## for 2005 and 2006 Multi-Pro 1250 Turf Sprayer

Model No. 112-7942

### Installation Instructions

## Installation

### Loose Parts

Use the chart below to verify that all parts have been shipped.

Procedure	Description	Qty.	Use
<b>1</b>	No parts required	–	Neutralize the tank.
<b>2</b>	Adapter assembly Nipple, short Cross Nipple Elbow, 90 degree Agitation nozzle Nut	2 6 2 6 6 6 6	Prepare the new tank agitation nozzles.
<b>3</b>	No parts required	–	Remove the tank agitation nozzles.
<b>4</b>	No parts required	–	Install the new tank agitation nozzles.
<b>5</b>	Agitation reducer	1	Install the reducer.
<b>6</b>	No parts required	–	Finish the installation.



Chemicals are hazardous and can injure you, bystanders, animals, plants, soils, or other property.

- Carefully read and follow the chemical manufacturer's instructions for the safe preparation, use, and disposal of the chemical.
- Keep chemicals off of your or bystander's skin. If contact should occur, wash it off immediately with clean water and detergent.
- Wear goggles and other protective equipment as instructed by the chemical manufacturer.

# 1

## Cleaning and Neutralizing the Tank

### No Parts Required

### Procedure

1. Move the sprayer onto a level surface, set the parking brake, stop the pump, stop the engine, and remove the ignition key.
2. Drain the contents of the tank to remove any solution in tank. Refer to the *Operator's Manual* for more information.

**Important:** Properly dispose of unused chemicals and chemical containers as instructed

by the chemical manufacturer and your local codes.

- 3. Perform the procedure for Cleaning the Sprayer described in Operation section in the *Operator's Manual*. Use a cleaning/neutralizing agent in the water as needed.

**Note:** Consult the chemical manufacturers instruction of the last chemical used to select the proper cleaning/neutralizing agent.

- 4. Rinse the sprayer a minimum of three times to make sure the tank is clean. On the final rinse, use only clean, clear water.

2

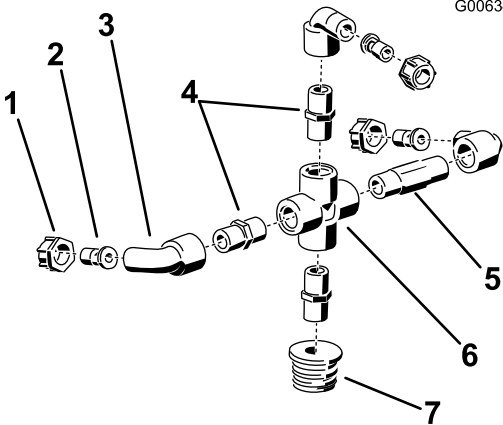
# Prepare the New Tank Agitation Nozzles

## Parts needed for this procedure:

2	Adapter assembly
6	Nipple, short
2	Cross
6	Nipple
6	Elbow, 90 degree
6	Agitation nozzle
6	Nut

## Procedure

- 1. Locate the loose parts shown in Figure 1 and Figure 2. Assemble the parts as shown for both nozzles. Finger tighten to allow for further adjustment.



**Figure 1**  
Forward Nozzle

1. Nut

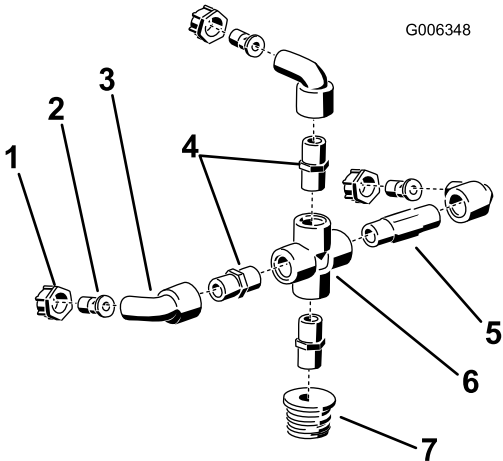
2. Nozzle

3. Elbow

4. Nipple, short
5. Nipple, long

6. Cross

7. Adapter assembly



**Figure 2**  
Rear nozzle

1. Nut

2. Nozzle

3. Elbow

4. Nipple, short
5. Nipple, long

6. Cross

7. Adapter assembly

- 2. Adjust the loose fitting so that the nozzles on the forward and rear are set to the approximate degrees shown in Figure 3 and Figure 4.

# 3

## Removing the Tank Agitation Nozzles

No Parts Required

### Procedure



Chemicals are hazardous and can injure you, bystanders, animals, plants, soils, or other property.

- Carefully read and follow the chemical manufacturer's instructions for the safe preparation, use, and disposal of the chemical.
- Keep chemicals off of your or bystander's skin. If contact should occur, wash it off immediately with clean water and detergent.
- Wear goggles and other protective equipment as instructed by the chemical manufacturer.

**Important:** The following procedure requires contact with the interior of the main tank. Protective clothing should be worn at all times to cover the skin, eyes, nose and mouth exposed to any residual chemicals inside the tank.

1. Once the tank is clean, open the tank cover and remove the strainer inside.
2. Using tool, such as a pole hook, remove the retaining forks securing the tank agitation nozzles from the interior of the main tank. Retain the forks for later use.
3. Enter the tank and remove the tank agitation nozzles.

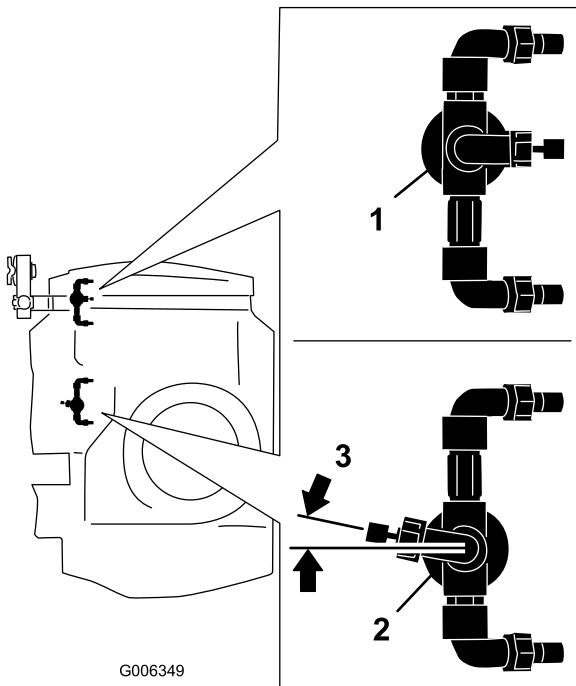


Figure 3

Top View

1. Rear Nozzle
2. Forward Nozzle
3. 10 degrees

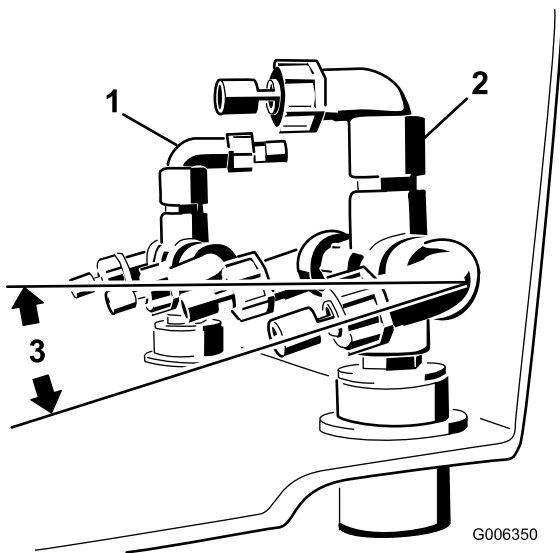


Figure 4

1. Rear Nozzle
2. Forward Nozzle
3. 15 degrees

3. Tighten all fittings securely once the nozzles are in the described orientation.

# 4

## Installing the New Tank Agitation Nozzles

### No Parts Required

### Procedure

1. Enter tank to install the new tank agitation nozzles.
2. Install the nozzles as shown in Figure 5 and secure nozzles using the retaining forks removed previously.

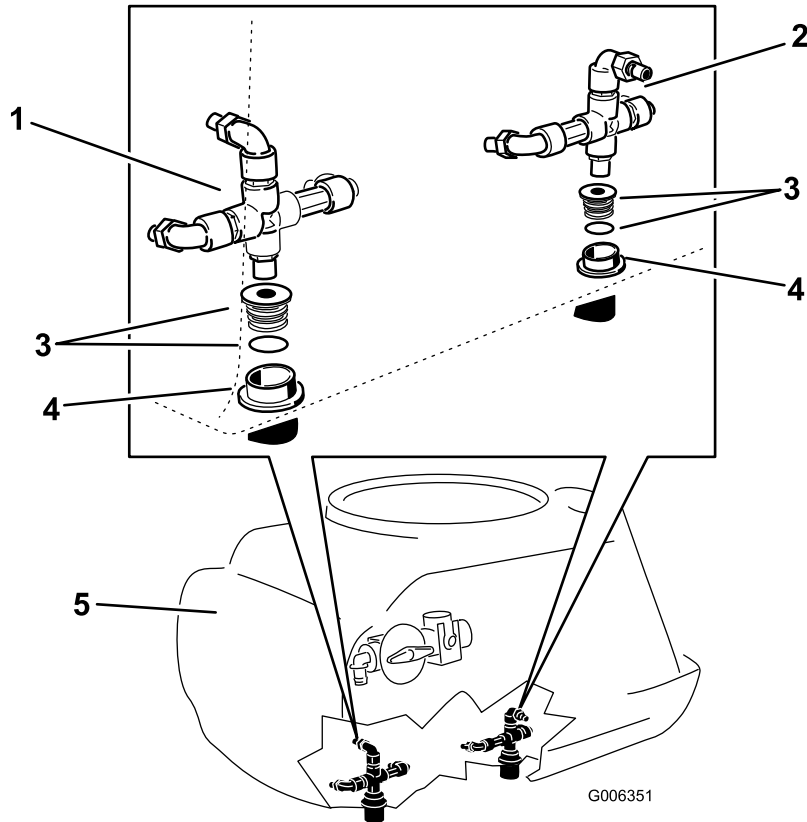


Figure 5

- |                   |                     |                       |
|-------------------|---------------------|-----------------------|
| 1. Rear nozzle    | 3. Adapter assembly | 5. Main tank assembly |
| 2. Forward nozzle | 4. Bulkhead         |                       |

3. Exit the tank and replace the strainer. Close the tank cover.

# 5

## Installing the Reducer

### Parts needed for this procedure:

1	Agitation reducer
---	-------------------

### Procedure

1. Locate the agitation control valve on the right side of the main tank. Remove the retaining fork securing the agitation control valve to the upper tee. Retain all parts.

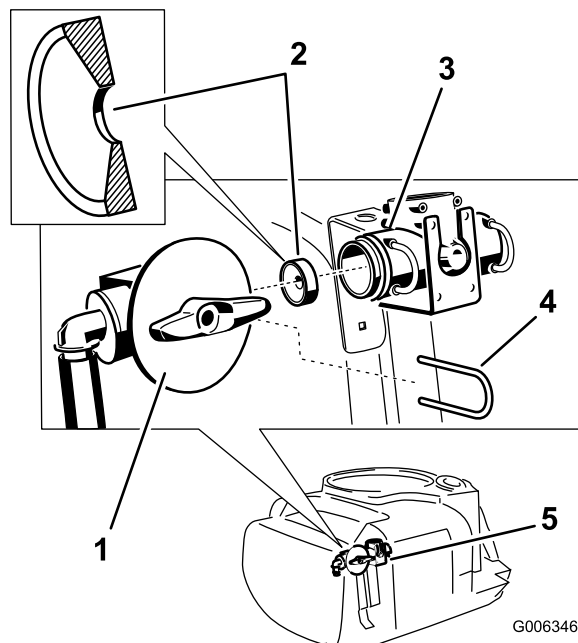


**Chemicals are hazardous and can injure you, bystanders, animals, plants, soils, or other property.**

- Carefully read and follow the chemical manufacturer's instructions for the safe preparation, use, and disposal of the chemical.
- Keep chemicals off of your or bystander's skin. If contact should occur, wash it off immediately with clean water and detergent.
- Wear goggles and other protective equipment as instructed by the chemical manufacturer.

**Important:** Fluids can remain in the spray system hoses after the sprayer has been rinsed. Use caution when disconnecting any hoses and have a bucket ready to catch any escaping liquid.

2. Remove the agitation control valve from the upper tee.
3. Install the agitation reducer to the upper tee as shown in Figure 5



**Figure 6**

- |                      |                   |
|----------------------|-------------------|
| 1. Control valve     | 4. Retaining fork |
| 2. Agitation reducer | 5. Valve cluster  |
| 3. Upper tee         |                   |

4. Install the agitation control valve and secure it with the retaining fork removed previously.

# 6

## Finishing the Installation

### No Parts Required

### Procedure

**Note:** Agitation increases as the application rate is reduced. Agitation flow through the nozzles is reduced at higher application rates.

1. Fill the machine with 50 gallons of clean water.
2. Run the agitation and rinse cycles with the water to test for leaks.
3. Drain the remain fluid in the tank.

**Notes:**

**Notes:**



**Count on it.**