



Commercial Walk-Behind Mower Floating Deck T-Bar Gear with 32in Cutting Unit

Model No. 30092 - 270000001 and up.

Parts Catalog

Ordering Replacement Parts

To order replacement parts, please supply the part number, the quantity, and the description of each part desired.

Understanding Reference Numbers

Each Identified part in an illustration has a reference number. The reference number for a part also appears in the parts list, along with other information about the part.

This catalog uses two special reference number formats, one to indicate parts in a service assembly and another to indicate the quantity of a given part in an illustration.

Service Assembly Reference Numbers

Parts in service assemblies have reference numbers in the form a:b. The a represents the reference number of the entire service assembly and the b represents a sequential number unique to each part within the service assembly.

For example, a wheel assembly might be identified by reference number 6, the tire by 6:1, the valve by 6:2, and the wheel by 6:3. When you order the assembly identified by reference number 6, you receive all parts identified by reference numbers 6:1, 6:2, and 6:3. However, you may also order any part individually. Reference numbers of this type appear in illustrations and in part lists.

Reference Numbers Indicating Quantity

In an illustration, if a reference number indicates more than one part, the reference number has the form nX y. The n represents the quantity of the part, the X is the multiplication symbol, and the y represents the reference number.

For example, in an illustration, the reference number 2X 37 means that two of the parts identified by reference number 37 are indicated.

Contents

Description	Page	Description	Page
Fuel Tank and Idler Bracket Assembly	3	Lubrication Equipment Assembly Kawasaki FH430V-AS35	15
Transmission and Idler Pulley Assembly	4	Cooling Equipment Assembly Kawasaki FH430V-AS35	16
Brake, Wheel Pulley and Wheel Assembly	5	Electric Equipment Assembly Kawasaki FH430V-AS35	17
Handle and Control Panel Assembly	6	Control Equipment Assembly Kawasaki FH430V-AS35	18
Engine Assembly	7	Carburetor Assembly Kawasaki FH430V-AS35	19
Carrier Assembly	8	Air Filter and Muffler Assembly Kawasaki FH430V-AS35	20
Deck Assembly	9	Fuel Tank and Valve Assembly Kawasaki FH430V-AS35	21
Spindle and Blade Assembly	10	Starter Assembly Kawasaki FH430V-AS35	22
Decal and Mulcher Cover Assembly	11	Label Assembly Kawasaki FH430V-AS35	23
Cylinder and Crankcase Assembly Kawasaki FH430V-AS35	12	Attachments and Accessories List	24
Piston and Crankshaft Assembly Kawasaki FH430V-AS35	13		
Valve and Camshaft Assembly Kawasaki FH430V-AS35	14		

Part Description Abbreviations

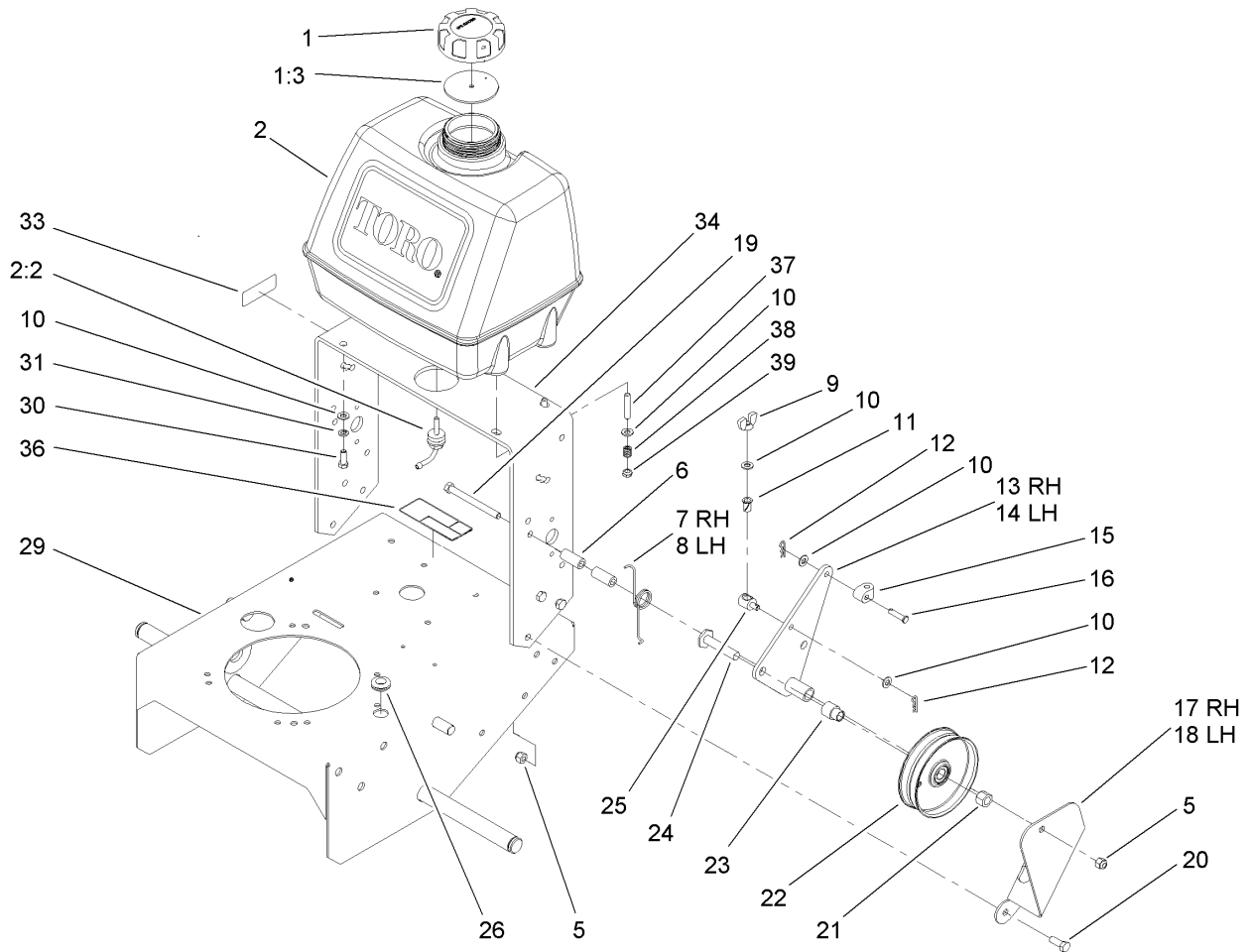
Part descriptions in this catalog may include the following abbreviations.

AR. as required	HYD. hydraulic
ASM. assembly	LH. left hand
BBC. blade brake clutch	NI. nylon insert
CARR. carriage	NPTF. national pipe thread fine
DEG. degrees	PFH. phillips flat head
EXT. external	PPH. phillips pan head
FH. flat head	PPHTF. phillips pan head thread forming
GA. gauge	PRH. phillips round head
HD. heavy-duty	PTH. phillips truss head
HF. hex flange	PTO. power-take-off
HH. hex head	RH. right hand
HHF. hex head flange	ROPS. roll-over protection system
HHFTF. hex head flange thread forming	SFH. slotted fillister head
HJ. hex jam	SHH. slotted hex head
HLH. hex lag head	SHWH. slotted hex washer head
HOC. height-of-cut	SPH. slotted pan head
HSBH. hex socket button head	SQH. square head
HSFH. hex socket flat head	SRH. slotted round head
HSH. hex socket head	STD. standard
HWH. hex washer head	TAP. self tapping
HWHTF. hex washer head thread forming	TTH. torx truss head

Footnotes

❶ Not serviced separately

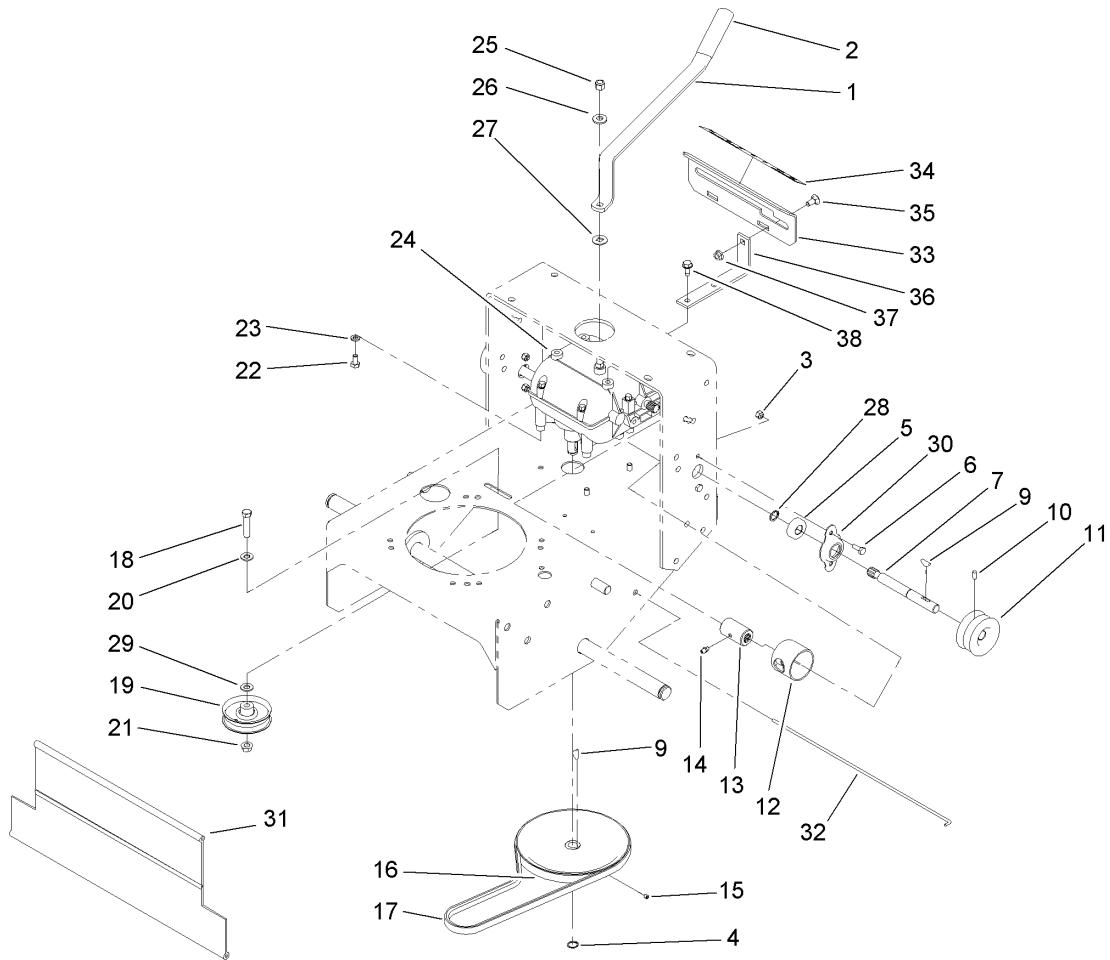
❷ Obtain from your local Kawasaki dealer



Fuel Tank and Idler Bracket Assembly

Ref	Part No.	Qty.	Description
1	88-3980	1	Gas Cap ASM
1:3	88-4010	1	Gasket-Cap, Gas
2	106-0730	1	Fuel Tank ASM
2:2	103-2605	1	Fitting-Fuel, Bulkhead
5	3296-39	8	Nut-Lock, NI
6	74-0040	4	Spacer-Pivot, Idler
7	51-4370	1	Spring-Torsion, RH
8	51-4380	1	Spring-Torsion, LH
9	32103-25	2	Nut-Wing
10	3256-23	12	Washer-Flat
11	52-2890	2	Bushing-Nylon
12	3290-307	4	Pin-Hair
13	108-2741-01	1	RH Idler Arm ASM
14	108-2740-01	1	LH Idler Arm ASM
15	74-0521	2	Fitting-Rod
16	283-6	2	Pin-Clevis
17	67-6370-01	1	Bracket-Support, RH
18	67-6380-01	1	Bracket-Support, LH
19	323-16	2	Screw-HH
20	323-6	6	Screw-HH
21	3296-23	2	Nut-Lock, NI
22	95-2800	2	Pulley-Idler
23	95-2801	2	Spacer-Pulley
24	51-4450	2	Screw-Leveler

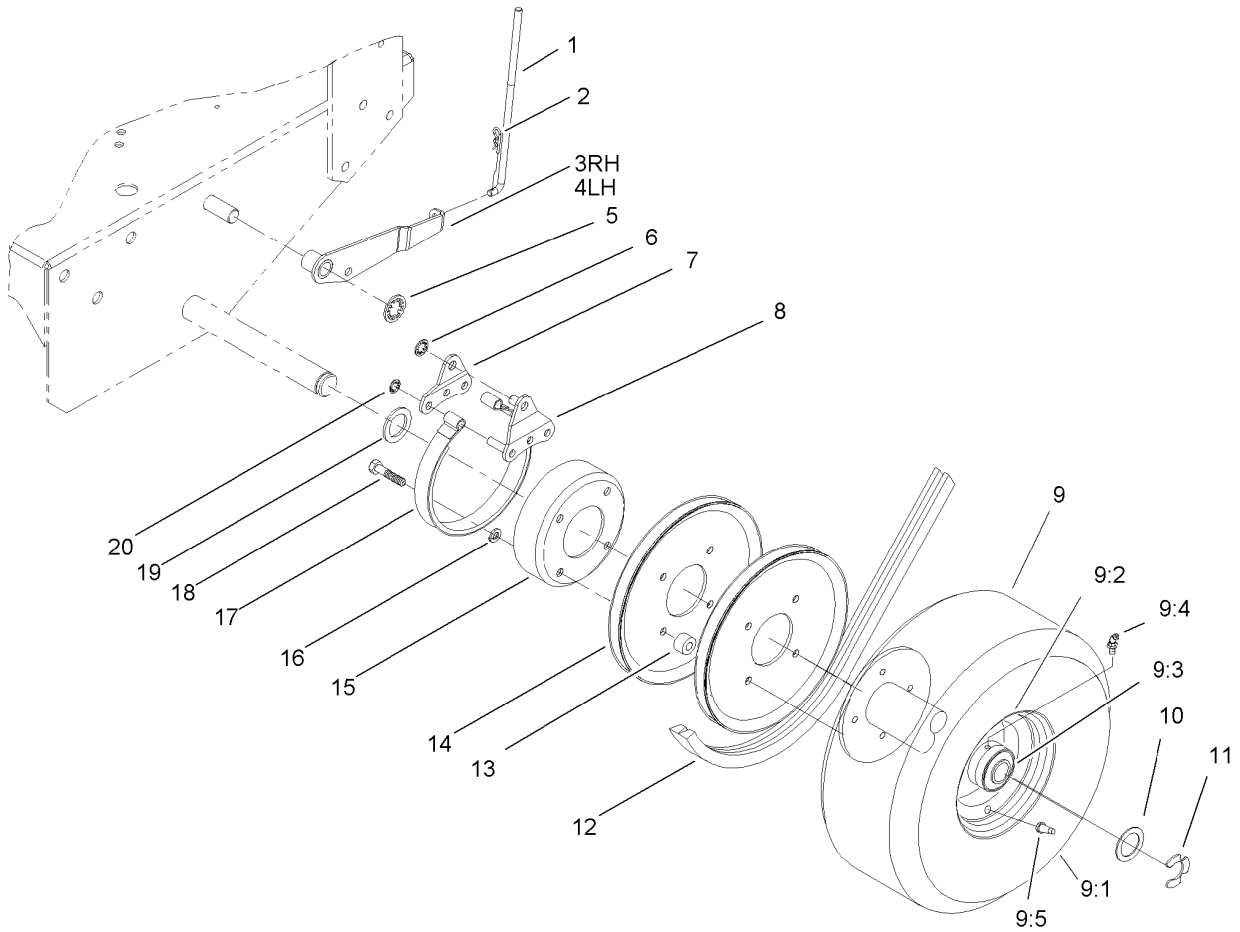
Ref	Part No.	Qty.	Description
25	68-9690	2	Fitting-Rod
26	237-124	1	Grommet
29	105-4670-01	1	Frame ASM
30	322-4	4	Screw-HH
31	3253-4	2	Washer-Lock
33	95-2814	1	Decal-Shut Off, Fuel
34	106-0649-01	1	Frame-Upper
36	98-0776	1	Decal-Caution
37	104-8121	2	Stud-Threaded
38	1-633349	2	Spring-Tank, Fuel
39	3296-47	2	Nut-Lock, NI



Transmission and Idler Pulley Assembly

Ref	Part No.	Qty.	Description
1	98-3274-03	1	Lever-Shift
2	47-1970	1	Grip
3	3296-42	4	Nut-Lock, NI
4	32120-64	1	Ring-Snap, External
5	1-323252	2	Bearing-Shaft
6	321-4	4	Screw-HH
7	104-1102	2	Shaft-Output
9	3257-5	3	Key-Woodruff
10	3245-9	2	Screw-Set
11	105-2698	2	Pulley-Transmission
12	51-4220	2	Guard-Coupler
13	1-323680	2	Coupler
14	302-5	2	Fitting-Grease
15	3245-1	1	Screw-Set, HSH
16	51-4190	1	Pulley-Driven
17	26-9671	1	Belt V
18	323-9	1	Screw-HH
19	51-4810	1	Pulley-Idler
20	3256-24	1	Washer-Flat
21	32128-21	1	Nut-HF
22	322-2	4	Screw-HH
23	3253-4	4	Washer-Lock
24	1-323500	1	Transmission
25	3296-6	1	Nut-Lock

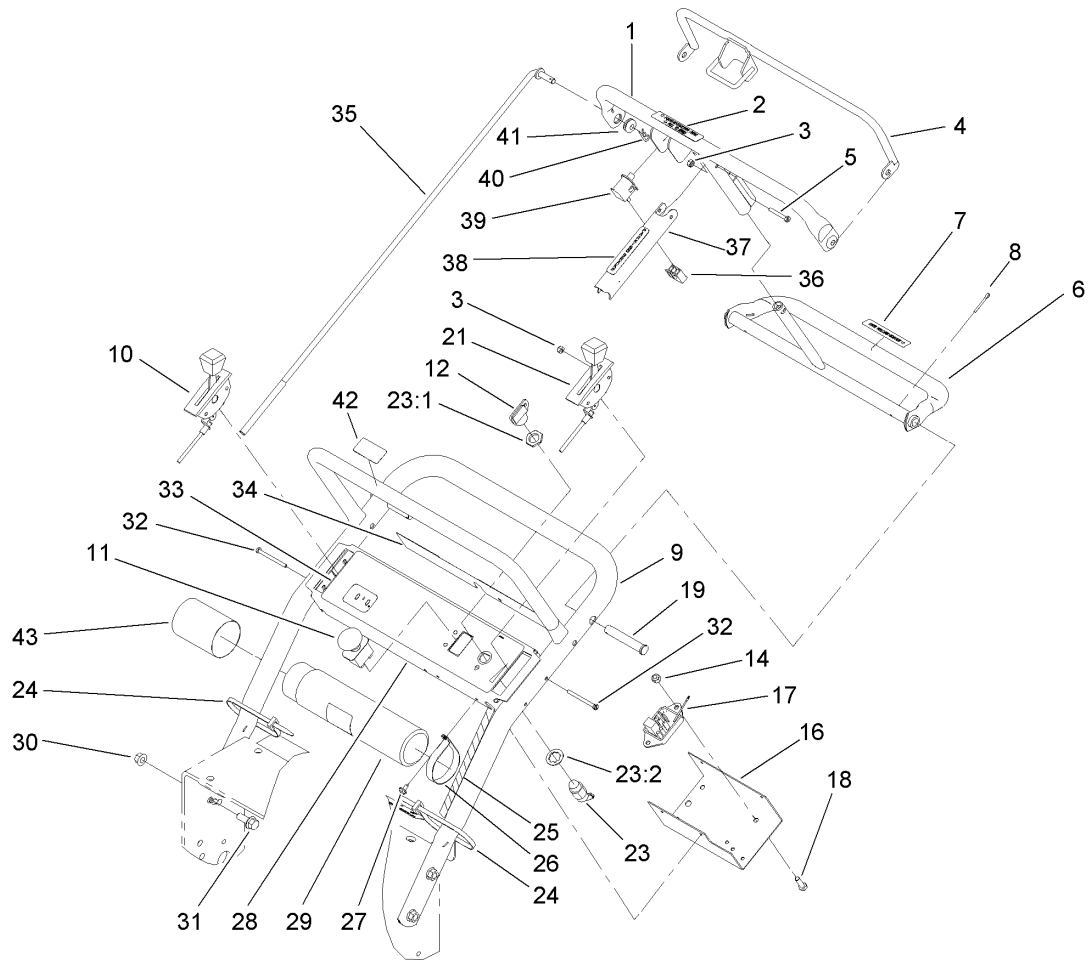
Ref	Part No.	Qty.	Description
26	98-5975	1	Washer-Belleville
27	1-323379	1	Washer
28	32151-62	2	Ring-Retaining
29	3256-24	1	Washer-Flat
30	1-323254	2	Flange-Output
31	95-1526	1	Shield-Trailing
32	95-1529	1	Rod-Shield
33	1-323387-03	1	Plate-Shift
34	98-3256	1	Decal-Speed, Ground
35	3230-1	2	Bolt-CARR
36	1-323389-03	2	Bracket-Plate, Shift
37	32128-20	2	Nut-HF
38	9264964	4	Screw-HWH, Thread Cut



Brake, Wheel Pulley and Wheel Assembly

Ref	Part No.	Qty.	Description
1	51-4580	2	Rod-Brake
2	3290-307	2	Pin-Hair
3	67-6400-01	1	Arm-Brake, RH
4	67-6420-01	1	Arm-Brake, LH
5	32151-40	2	Ring-Retaining
6	32151-56	2	Ring-Retaining, External
7	51-4660-01	2	Plate-Link, Brake
8	51-4650-01	2	Link-Brake
9	93-1163	2	Wheel And Tire ASM
9:1	231-94	1	Tire-Front
9:2	93-1181	1	Wheel ASM
9:3	92-1746	2	Bearing-Ball
9:4	302-57	1	Fitting-Grease
9:5	232-27	1	Stem-Valve
10	10-8110	8	Washer-Thrust
11	32151-91	2	Ring-Retaining
12	51-4291	2	V-Belt
13	51-4170	8	Spacer-Pulley
14	51-4160-03	4	Pulley-Wheel
15	51-4180-03	2	Drum-Brake
16	3253-4	8	Washer-Lock
17	51-4700	2	Band-Brake
18	322-7	8	Screw-HH
19	51-4230	2	Washer-Wheel

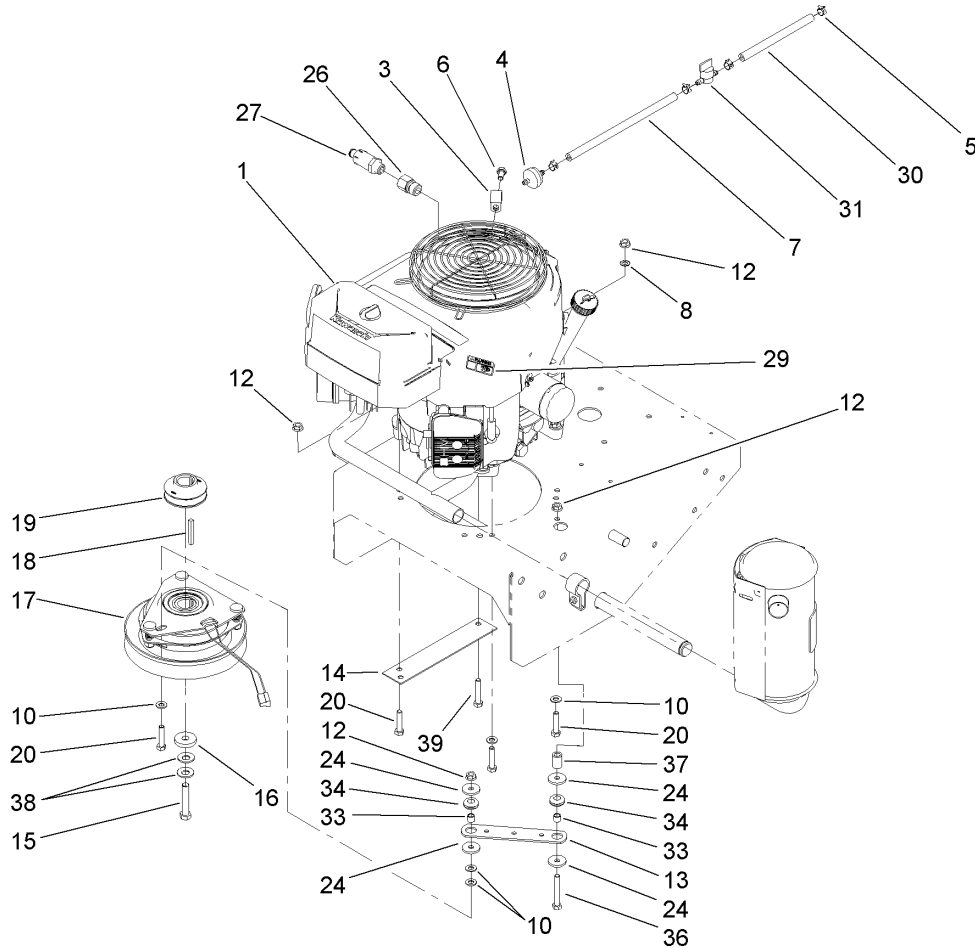
Ref	Part No.	Qty.	Description
20	32151-72	4	Ring-Retaining



Handle and Control Panel Assembly

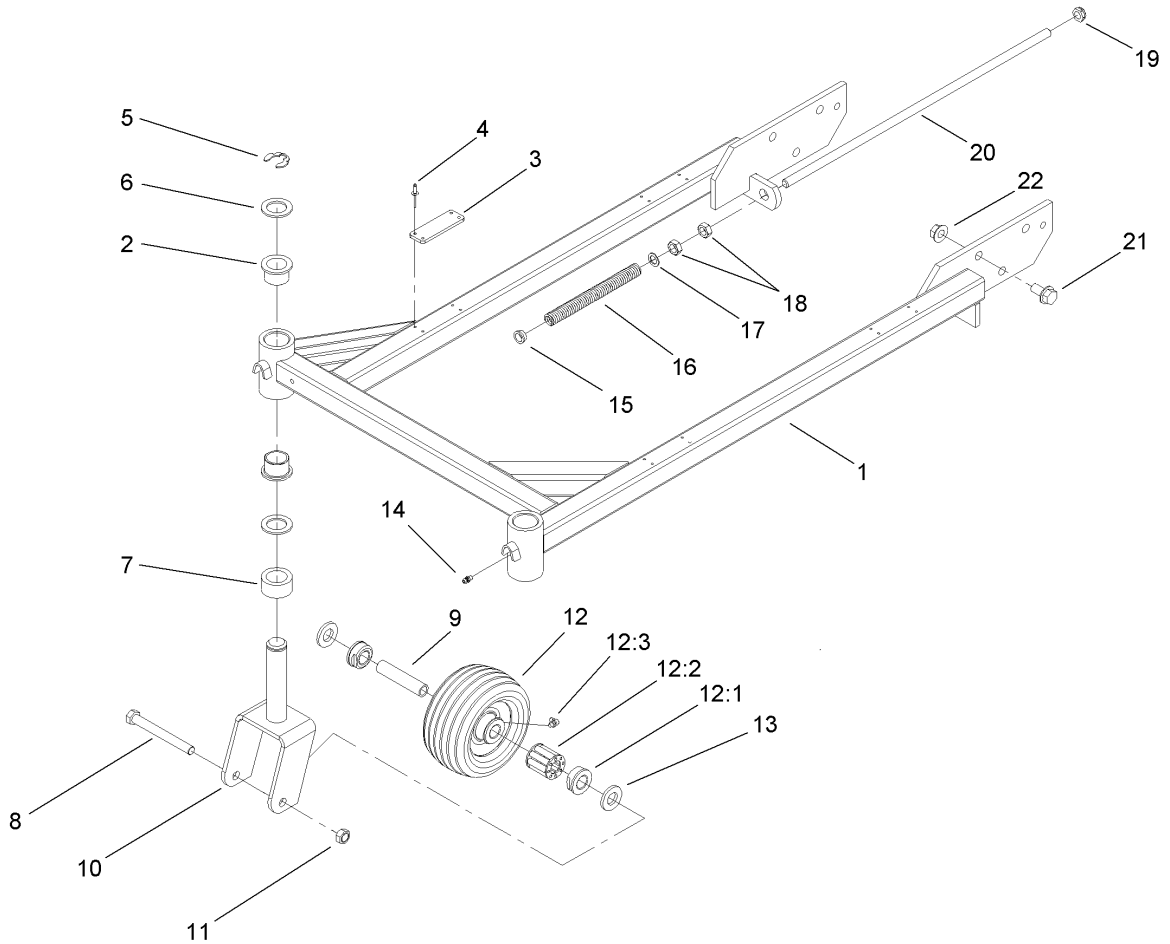
Ref	Part No.	Qty.	Description
1	82-7690-03	1	Bar-Control
2	82-2290	1	Decal
3	3296-2	5	Nut-Lock
4	82-7680-03	1	Bail ASM
5	32105-1	1	Screw-SHH
6	106-5477-03	1	Control Pivot ASM
7	82-2280	1	Decal
8	3272-11	2	Pin-Cotter
9	105-3158-03	1	Upper Handle ASM
10	112-8712	1	Cable-Choke
11	104-8140	1	Switch-PTO
12	63-8360	2	Key-Ignition
14	3296-42	1	Nut-Lock, NI
16	93-1187-03	1	Panel-Bottom
17	104-8141	1	Module-Delay
18	321-2	1	Screw-HH
19	283-55	2	Pin-Clevis
21	112-8711	1	Cable-Throttle
23	29-5560	1	Switch-On / Off
23:1	218-461	1	Nut-HH
23:2	3254-5	1	Washer-Tooth
24	3290-378	2	Tie-Cable
25	104-8137	1	Harness-Wire
26	2412-120	2	R-Clamp

Ref	Part No.	Qty.	Description
27	32104-76	4	Screw
28	110-4982-03	1	Panel-Control
29	104-7050	1	Housing-Manual
30	32128-21	4	Nut-HF
31	3234-11	4	Screw-HHF
32	32105-14	4	Screw-SHH
33	110-4971	1	Decal-Control Panel
34	105-0884	1	Decal-Danger
35	82-7632	2	Rod-Control
36	218-595	1	Connector-Body
37	51-4850-03	1	Lever-Brake, Parking
38	52-2010	1	Decal-Lever, Parking
39	82-2190	1	Switch-Bail
40	3290-307	2	Pin-Hair
41	237-141	2	Grommet-Rubber
42	98-4387	1	Decal-Protection, Ear
43	104-7048	1	Cap-Housing



Engine Assembly

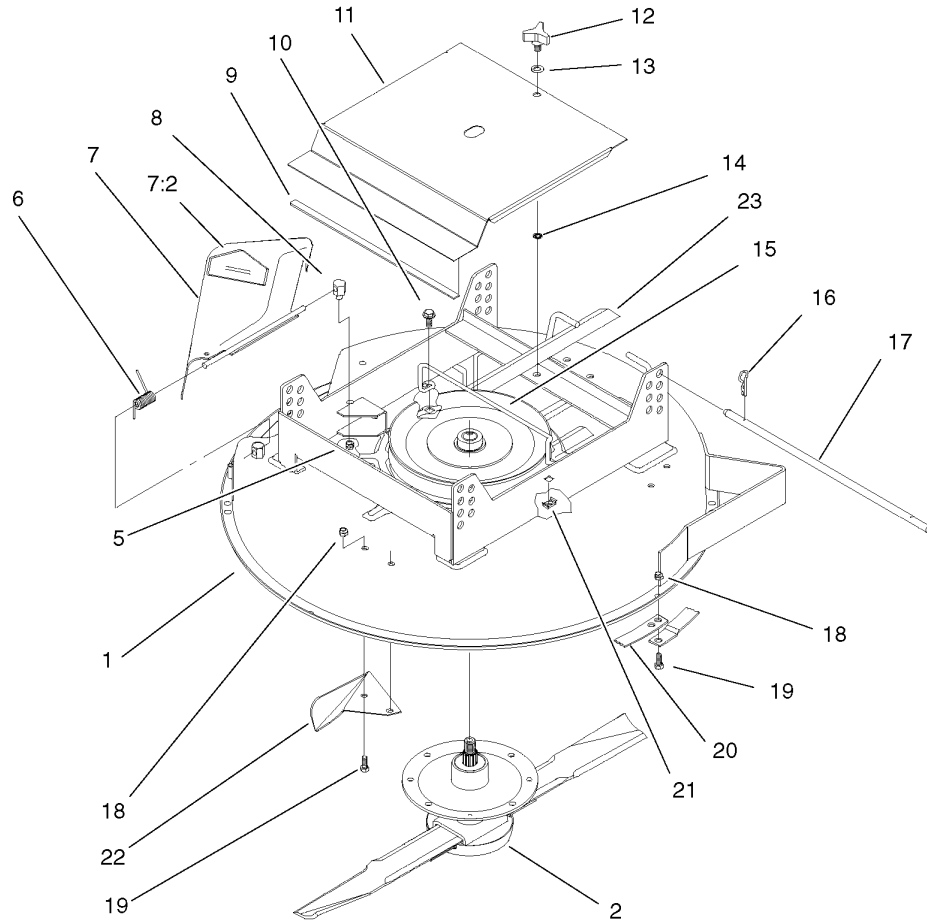
Ref	Part No.	Qty.	Description	Ref	Part No.	Qty.	Description
1		1	Engine-Kawasaki, FH430V-As35	34	1-633630	2	Grommet-Brake
3	2412-87	1	Clamp-Cable	36	322-11	1	Screw-HH
4	56-6360	1	Filter-Fuel	37	104-6373	1	Tube-Retainer
5	2412-98	4	Clamp	38	1-603610	2	Washer-Spring
6	33114-016	1	Screw-HH	39	322-9	1	Screw-HH
7	110-4894	1	Hose-Fuel				
8	3255-8	1	Washer-Lock				
10	3256-23	5	Washer-Flat				
12	32128-20	6	Nut-HF				
13	1-633543-03	1	Strap-Clutch, Brake				
14	94-5847-01	1	Cover-Pulley				
15	3212-9	1	Screw-HH				
16	107-4136	1	Washer				
17	105-2635	1	Clutch / Brake				
18	608006	1	Key-Square				
19	107-4112	1	Pulley-Drive				
20	322-7	4	Screw-HH				
24	1-613235	4	Washer				
26	103-1966	1	Adapter				
27	92-6877	1	Valve-Drain, Oil				
29	106-0699	1	Decal-Warning				
30	107-0588	1	Hose-Fuel				
31	1-603770	1	Valve-Fuel				
33	1-633545	2	Spacer				



Carrier Assembly

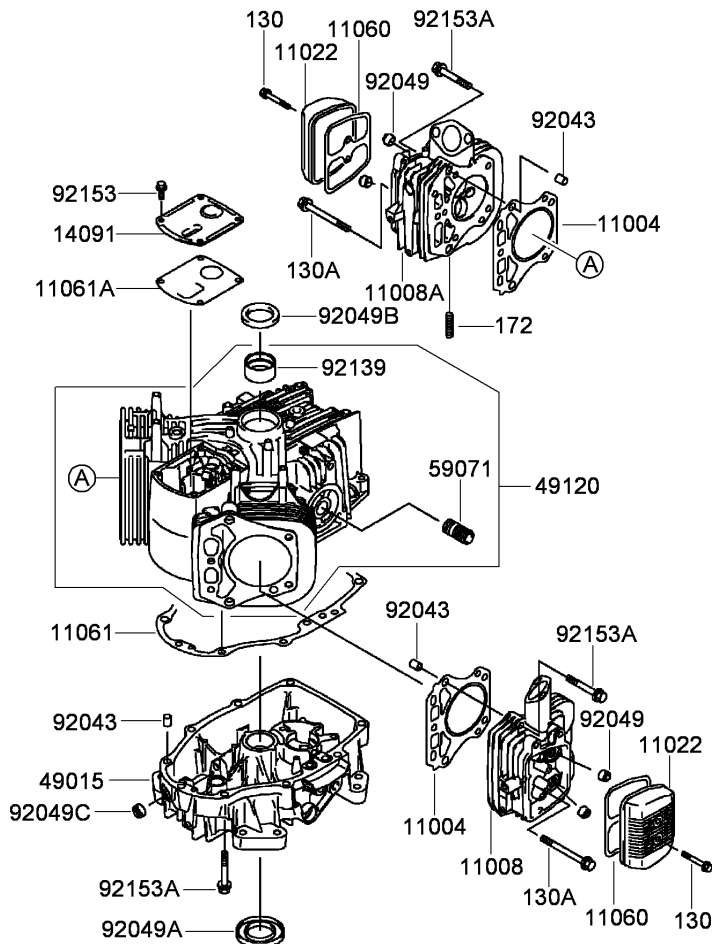
Ref	Part No.	Qty.	Description
1	74-0080	1	Carrier Frame ASM
2	94-1291	4	Bushing
3	74-0330	4	Pad-Rubber
4	3269-24	16	Rivet
5	32151-91	2	Ring-Retaining
6	3-6781	4	Washer-Thrust
7	93-1166	2	Spacer-Castor
8	325-18	2	Screw-HH
9	67-6220	2	Spanner
10	93-1164-01	2	Fork-Caster ASM
11	32153-5	2	Nut-Lock, Side
12	63-8400	2	Caster Wheel ASM
12:1	62-5580	2	Bearing-Outside
12:2	63-8580	1	Bearing-Roller
12:3	302-40	1	Fitting-Grease
13	67-6570	4	Spacer-Wheel
14	302-5	2	Fitting-Grease
15	256-156	2	Bushing-Flange
16	74-0290	2	Spring
17	41-8440	2	Washer
18	3218-5	4	Nut-Jam
19	74-0310	2	Shaft-Adjusting
20	3296-45	2	Nut-Lock, NI
21	3234-6	6	Screw-HHF

Ref	Part No.	Qty.	Description
22	32128-23	6	Nut-HF



Deck Assembly

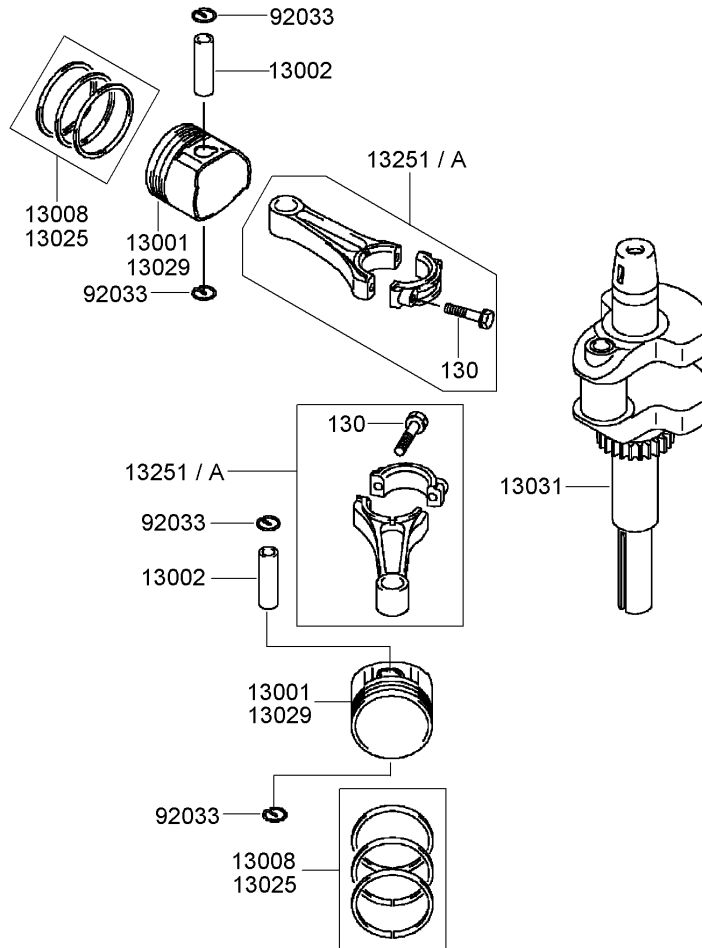
Ref	Part No.	Qty.	Description				
1		1	Deck ASM				
2		1	Spindle ASM				
5	32153-2	1	Nut-Lock, Side				
6	28-8010	1	Spring				
7	44-5930	1	Deflector ASM				
7:2	54-9220	1	Decal-Danger				
8	28-7350	1	Post-Pivot				
9	67-6180	1	Strip-Magnetic				
10	3234-29	2	Screw-HHF				
11	67-6160-01	1	Cover				
12	104-8587	1	Knob				
13	3256-24	1	Washer-Flat				
14	32151-72	1	Ring-Retaining				
15	74-0570	1	Guide-Belt				
16	3290-355	4	Pin-Hair				
17	67-6140	2	Rod-Support				
18	3296-29	24	Nut-Lock, NI				
19	322-4	24	Screw-HH				
20	92-5419-03	4	Ring-Recycler				
21	3290-496	2	Nut-Retainer				
22	80-2630-03	4	Kicker				
23	67-6920	1	V-Belt				



Cylinder and Crankcase Assembly Kawasaki FH430V-AS35

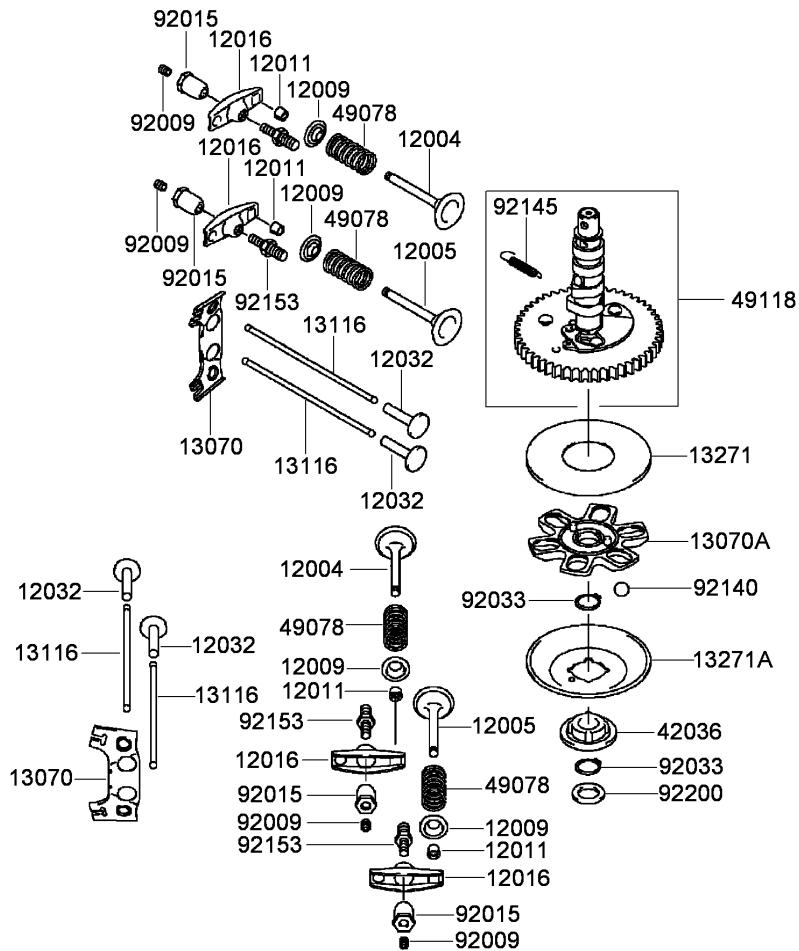
Ref	Part No.	Qty.	Description
②11004	11004-7018	2	Gasket-Head
②11008	11008-7021	1	Head-Cylinder, No. 2
②11008A	11008-7022	1	Head-Cylinder, No. 1
②11022	11022-7003	2	Case-Rocker
②11060	11060-7001	2	Gasket-Case, Rocker
②11061	11061-7007	1	Gasket-Cover, Crankcase
②11061A	11061-7008	1	Gasket-Breather
②14091	14091-7007	1	Cover
②49015	49015-7032	1	Cover-Crankcase
②49120	49120-7015	1	Crankcase
②59071	59071-2079	1	Joint
②92043	92043-7001	6	Pin
②92049	92049-7001	4	Seal-Oil, R V C2 (6X11X10.2)
②92049A	92049-7015	1	Seal-Oil, S D (35X62X8 L HSH)
②92049B	92049-7016	1	Seal-Oil, S D (35X48X8 R HSH)
②92049C	92049-7019	1	Seal-Oil, S O (8X14X5 HSH)
②92139	92139-7008	1	Bushing
②92153	92153-7043	4	Bolt (6X12)
②92153A	92153-7054	17	Bolt (8X50)
②130	130B0640	4	Bolt-Flanged (6X40)
②130A	130CA0875	2	Bolt-Flanged (8X75)
②172	172G0818	4	Bolt-Stud (8X18)

--	--	--	--



Piston and Crankshaft Assembly Kawasaki FH430V-AS35

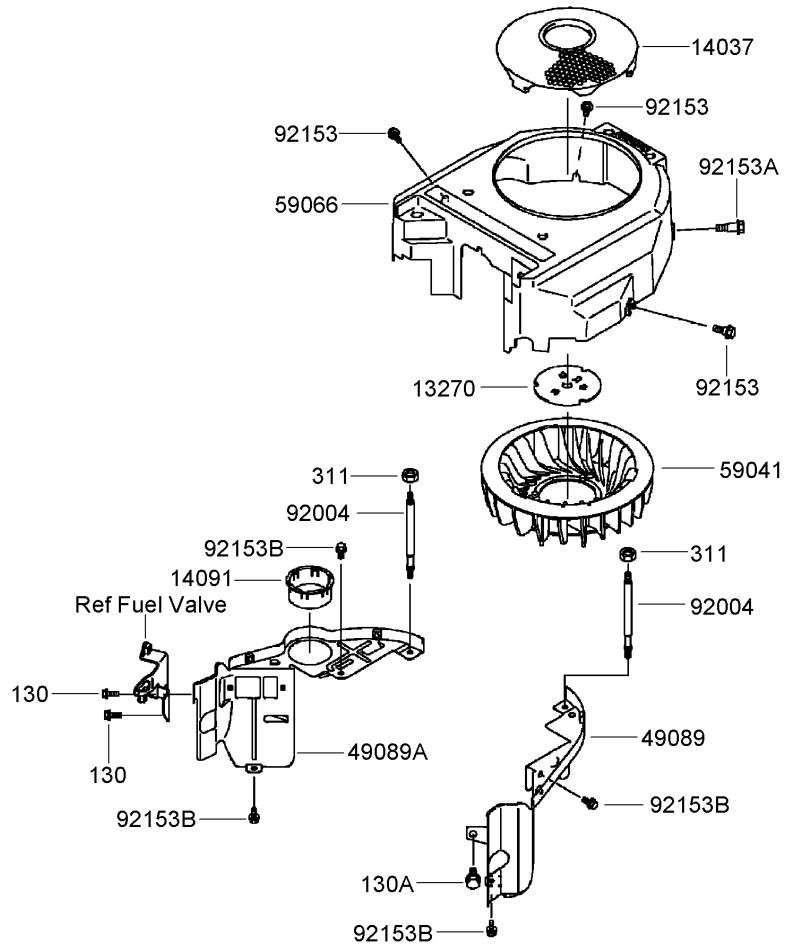
Ref	Part No.	Qty.	Description				
②13001	13001-7022	2	Piston-Engine				
②13002	13002-7001	2	Pin-Piston				
②13008	13008-7001	2	Ring Set-Piston				
②13025	13025-7003	1	Ring Set-Piston (L 0.50)				
②13029	13029-7005	1	Piston-Engine (L 0.50)				
②13031	13031-7033	1	Crankshaft				
②13251	13251-7007	2	Connecting Rod ASM				
②13251A	13251-7008	2	Connecting Rod ASM (0.50)				
②92033	92033-7002	4	Ring-Snap				
②130	130G0630	4	Bolt-Flanged (6X30)				



Valve and Camshaft Assembly Kawasaki FH430V-AS35

Ref	Part No.	Qty.	Description
②	12004	2	Valve-Intake
②	12005	2	Valve-Exhaust
④	12009	4	Retainer-Spring, Valve
⑧	12011	8	Collet
④	12016	4	Arm-Rocker
④	12032	4	Tappet
②	13070	2	Guide
①	13070A	1	Guide
④	13116	4	Rod-Push
①	13271	1	Plate
①	13271A	1	Plate-Governor
①	42036	1	Sleeve
④	49078	4	Spring-Valve, Engine
①	49118	1	Camshaft
④	92009	4	Screw
④	92015	4	Nut
②	92033	2	Ring-Snap
⑥	92140	6	Ball
①	92145	1	Spring
④	92153	4	Bolt
①	92200	1	Washer

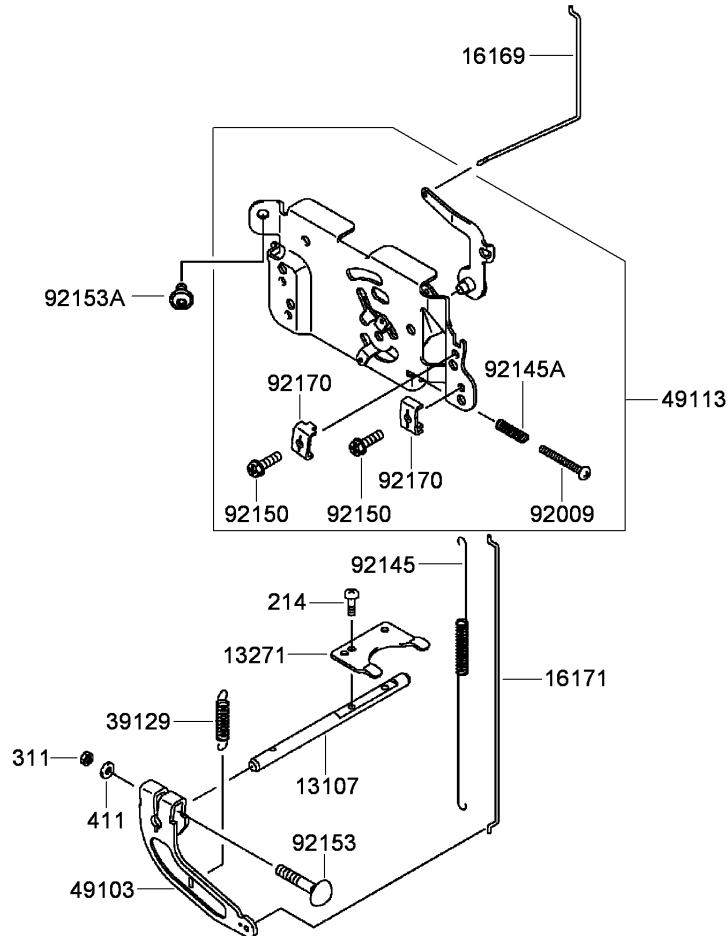
--	--	--	--



Cooling Equipment Assembly Kawasaki FH430V-AS35

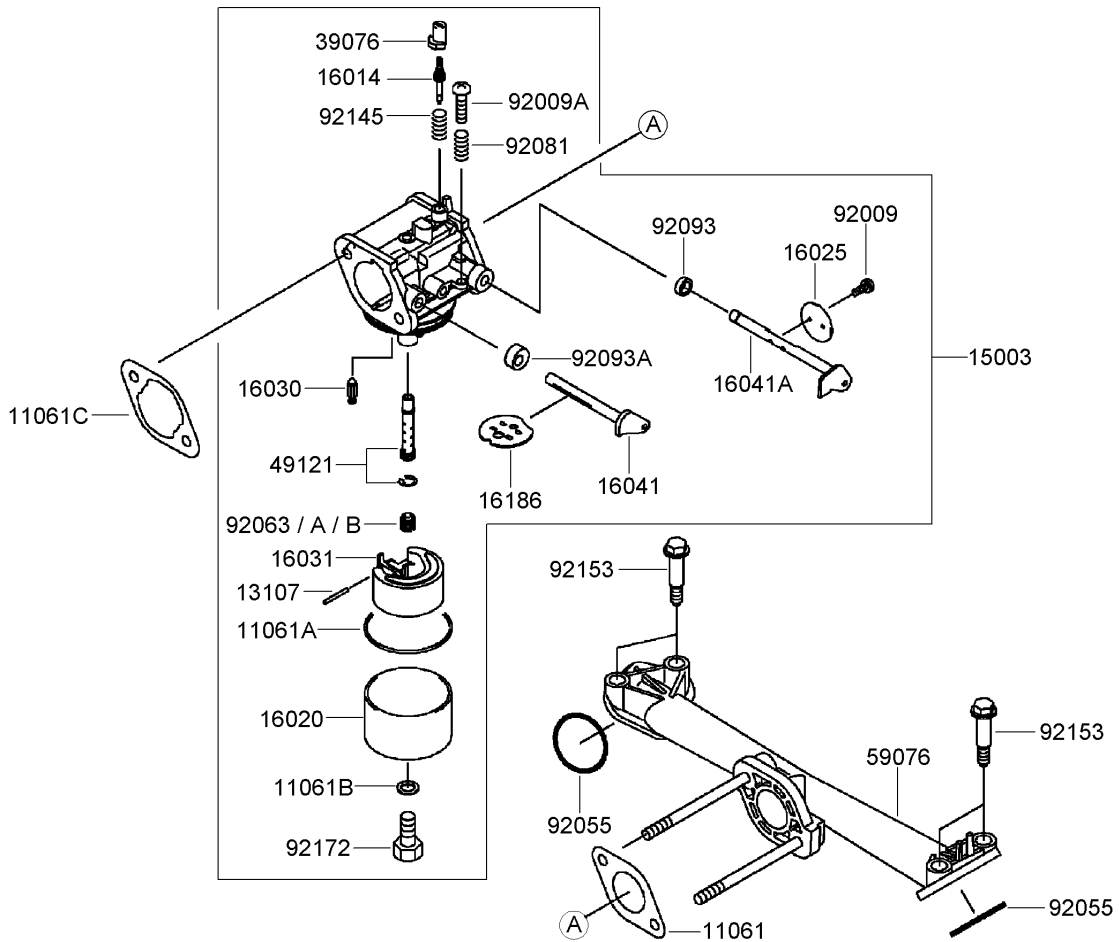
Ref	Part No.	Qty.	Description
②13270	13270-7007	1	Plate
②14037	14037-7025-9H	1	Screen
②14091	14091-7009	1	Cover
②49089	49089-7044	1	Shroud-Engine
②49089A	49089-7061	1	Shroud-Engine
②59041	59041-7012	1	Fan
②59066	59066-7036	1	Housing-Fan
②92004	92004-7007	2	Stud
②92153	92153-7007	3	Bolt
②92153A	92153-7008	1	Bolt
②92153B	92153-7043	4	Bolt (6X12)
②130	130B0616	2	Bolt-Flanged (6X16)
②130A	130B0816	1	Bolt-Flanged (8X16)
②311	311F0600	2	Nut-Hex (6Mm)

--	--	--	--



Control Equipment Assembly Kawasaki FH430V-AS35

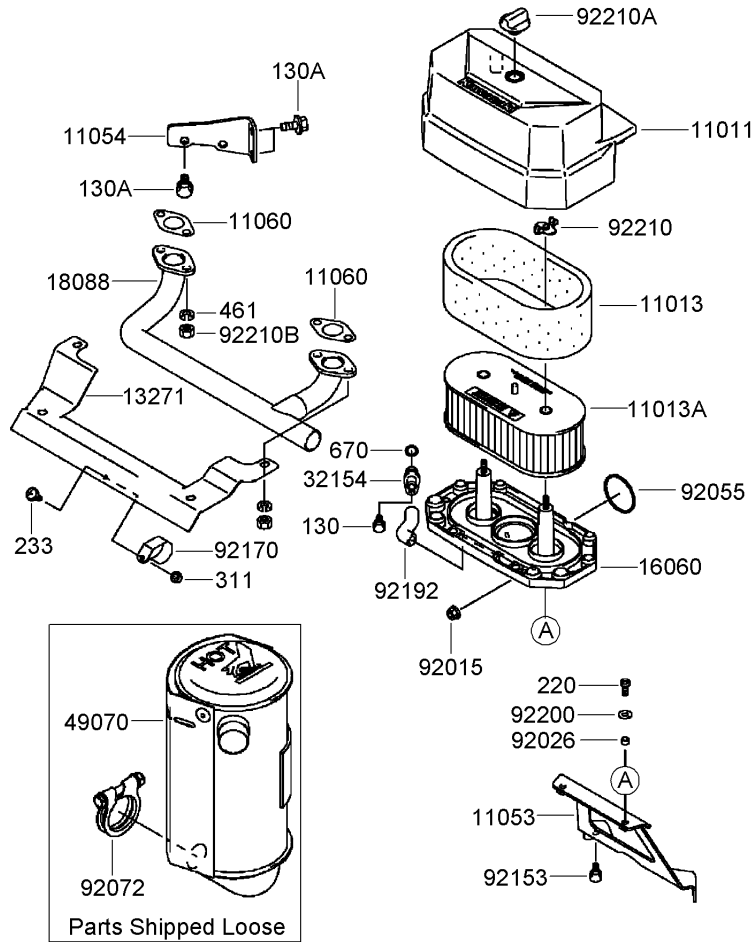
Ref	Part No.	Qty.	Description				
②13107	13107-7010	1	Shaft				
②13271	13271-7032	1	Plate				
②16169	16169-7012	1	Link-Choke				
②16171	16171-7007	1	Link				
②39129	39129-7003	1	Spring-Governor				
②49103	49103-7004	1	Arm-Governor				
②49113	49113-7024	1	Panel-Control				
②92009	92009-7007	1	Screw (4X35)				
②92145	92145-7003	1	Spring				
②92145A	92145-7005	1	Spring				
②92150	92150-2182	2	Bolt (5X18)				
②92153	92153-7033	1	Bolt (6X35)				
②92153A	92153-7043	2	Bolt (6X12)				
②92170	92170-7001	2	Clamp				
②214	214B0408	2	Screw-Pan (4X8)				
②311	311B0600	1	Nut-Hex (6Mm)				
②411	411B0600	1	Washer-Plain (6Mm)				



Carburetor Assembly Kawasaki FH430V-AS35

Ref	Part No.	Qty.	Description
②11061	11061-7004	1	Gasket-Insulator
②11061A	11061-7009	1	Gasket-Chamber
②11061B	11061-7010	1	Gasket-Screw
②11061C	11061-7018	1	Gasket-Cleaner, Air
②13107	13107-7018	1	Shaft
②15003	15003-7061	1	Carburetor ASM
②16014	16014-7002	1	Screw-Pilot, Air
②16020	16020-7003	1	Chamber-Float
②16025	16025-7006	1	Valve-Throttle
②16030	16030-7003	1	Valve-Float
②16031	16031-7002	1	Float
②16041	16041-7016	1	Shaft-Choke, Carburetor
②16041A	16041-7018	1	Shaft-Throttle, Carburetor
②16186	16186-7002	1	Choke Valve ASM
②39076	39076-7001	1	Limiter
②49121	49121-7001	1	Nozzle-Main
②59076	59076-7005	1	Manifold-Intake
②92009	92009-2083	2	Screw
②92009A	92009-2349	1	Screw
②92055	92055-7007	2	O-Ring (I D 31)
②92063	92063-7026	1	Jet-Main, No. 88
②92063A	92063-7028	1	Jet-Main, No. 85
②92063B	92063-7029	1	Jet-Main, No. 82
②92081	92081-2234	1	Spring

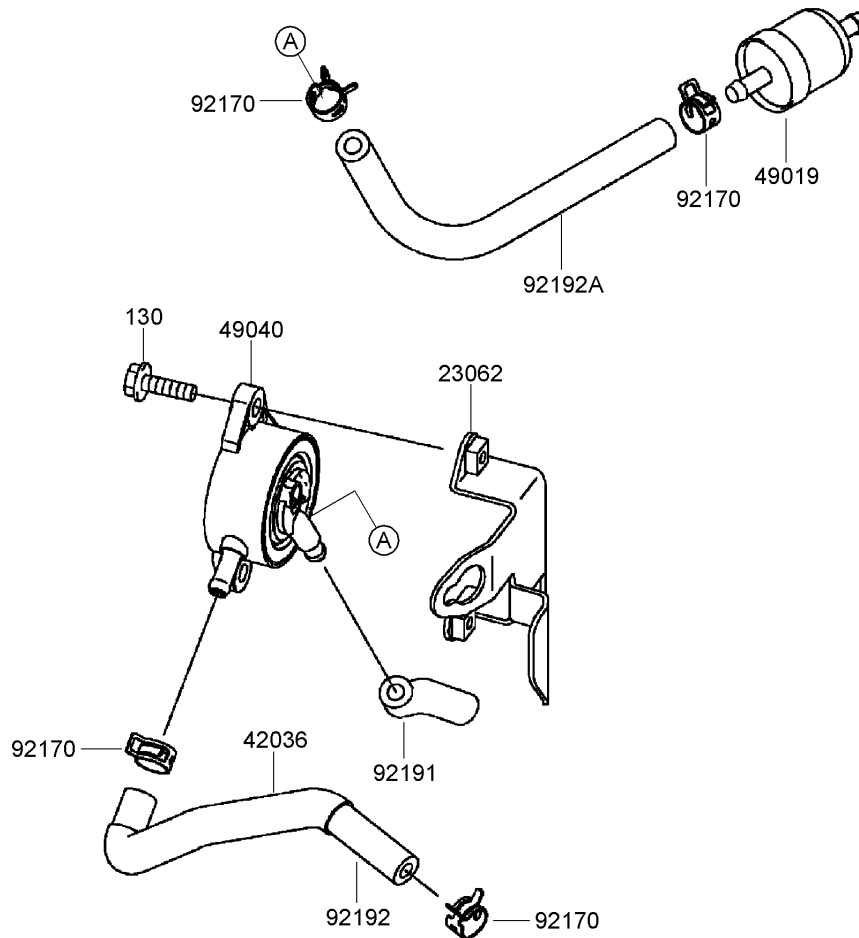
Ref	Part No.	Qty.	Description
②92093	92093-2100	1	Seal
②92093A	92093-7003	1	Seal
②92145	92145-7015	1	Spring
②92153	92153-7009	4	Bolt
②92172	92172-7002	1	Screw



Air Filter and Muffler Assembly Kawasaki FH430V-AS35

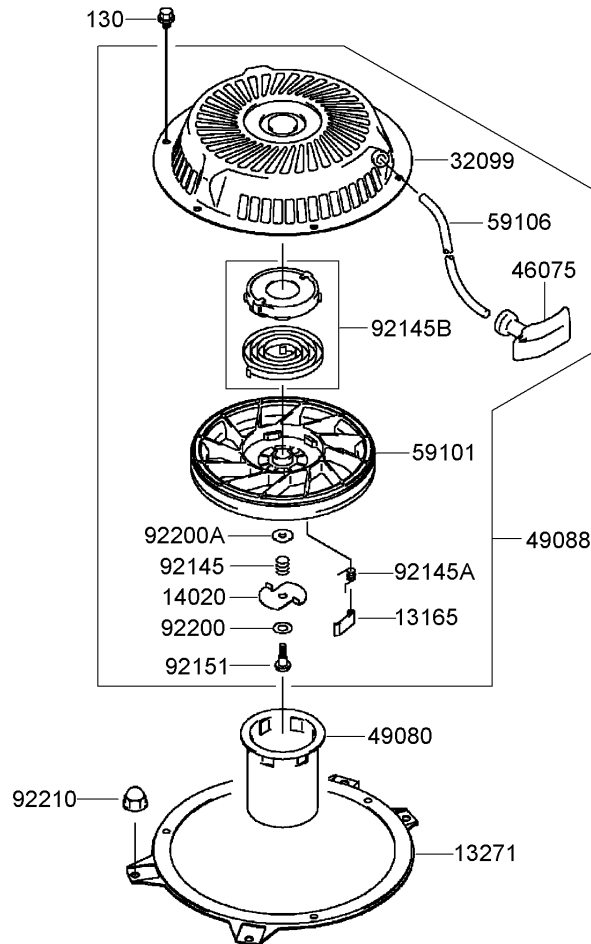
Ref	Part No.	Qty.	Description
②11011	11011-7045	1	Case-Filter, Air
②11013	11013-7025	1	Element-Filter, Air
②11013A	11013-7031	1	Element-Filter, Air
②11053	11053-7022	1	Bracket
②11054	11054-7002-9H	1	Bracket
②11060	11060-7021	2	Gasket-Muffler
②13271	13271-7022	1	Plate
②16060	16060-7016	1	Pipe-Intake
②18088	18088-7001	1	Pipe-Exhaust
②32154	32154-7006	1	Pipe
②49070	49070-7021	1	Muffler
②92015	92015-1193	2	Nut
②92026	92026-7001	2	Spacer (6.2X7.9X5)
②92055	92055-7015	1	O-Ring
②92072	92072-7012	1	Band
②92153	92153-7043	2	Bolt (6X12)
②92170	92170-7002	1	Clamp
②92192	92192-7010	1	Tube
②92200	92200-2070	2	Washer
②92210	92210-7004	2	Nut
②92210A	92210-7019	1	Nut
②92210B	92210-7027	4	Nut (M8)
②130	130B0610	1	Bolt-Flanged (6X10)

Ref	Part No.	Qty.	Description
②130A	130B0816	3	Bolt-Flanged (8X16)
②220	220B0614	2	Screw-Pan, Cross (6X14)
②233	233B0416	1	Screw (4X16)
②311	311B0400	1	Nut-Hex (4Mm)
②461	461F0800	4	Washer-Spring (8Mm)
②670	670B2010	1	O-Ring (10Mm)



Fuel Tank and Valve Assembly Kawasaki FH430V-AS35

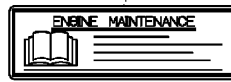
Ref	Part No.	Qty.	Description
②23062	23062-7004-9H	1	Bracket
②42036	42036-7012	1	Sleeve
②49019	49019-7001	1	Filter-Fuel
②49040	49040-7001	1	Pump-Fuel
②92170	92170-2088	4	Clamp
②92191	92191-7002	1	Tube
②92192	92192-7035	1	Tube (6.35X12.7X170)
②92192A	92192-7037	1	Tube (6.35X12.7X160)
②130	130B0620	2	Bolt-Flanged (6X20)



Starter Assembly Kawasaki FH430V-AS35

Ref	Part No.	Qty.	Description				
②13165	13165-7001	2	Pawl-Starter, Recoil				
②13271	13271-7003-9H	1	Plate				
②14020	14020-7001	1	Retainer				
②32099	32099-7002	1	Case-Starter, Recoil				
②46075	46075-7001	1	Grip-Starter, Recoil				
②49080	49080-7001	1	Pulley-Starting				
②49088	49088-7013	1	Starter-Recoil				
②59101	59101-7001	1	Reel-Starter, Recoil				
②59106	59106-7005	1	Rope				
②92145	92145-7006	1	Spring				
②92145A	92145-7007	2	Spring				
②92145B	92145-7008	1	Spring				
②92151	92151-7008	1	Bolt				
②92200	92200-7004	1	Washer				
②92200A	92200-7005	1	Washer				
②92210	92210-0003	4	Nut				
②130	130B0608	3	Bolt-Flanged (6X8)				

56033



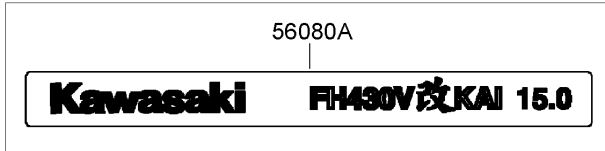
56070



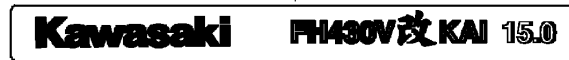
56080



56080A



56080B



Label Assembly Kawasaki FH430V-AS35

Ref	Part No.	Qty.	Description				
②56033	56033-7001	1	Label-Manual				
②56070	56070-7001	1	Label-Warning				
②56080	56080-2077	1	Label-Brand				
②56080A	56080-7024	1	Label-Brand				
②56080B	56080-7057	1	Label-Brand				

Attachments and Accessories

For 30092 - Commercial Walk-Behind Mower, Floating Deck T-Bar Gear with 32in Cutting Unit

Product Name

Model/Part

Bag Kit 30124

NOTES

NOTES

NOTES

