



Backhoe Mounting Kit

For TX Compact Utility Loaders

Model No. 23162

Installation Instructions

Important: This document contains the information for installing and connecting the backhoe to a TX series compact utility loader. Refer to the Backhoe Operator's Manual for safety, operation, and maintenance information.

Loose Parts

Use the chart below to verify that all parts have been shipped.

| Step | Description | Qty. | Use |
|----------|--------------------------------|------|---|
| 1 | Lanyard/Hydraulics Lever Clamp | 1 | Install the lanyard to the seat. |
| | Screw | 1 | |
| | Washer | 1 | |
| | Locknut | 1 | |
| | Holding pin | 1 | |
| 2 | Pin | 1 | Change the tilt cylinder pin. |
| 3 | Link | 2 | Connect the backhoe to the traction unit. |
| | Lynch pin | 4 | |
| 4 | Hydraulics lever clamp | 1 | Prepare the backhoe for operation. |

Step

1

Installing the Lanyard to the Seat

Parts needed for this step:

| | |
|---|--------------------------------|
| 1 | Lanyard/Hydraulics Lever Clamp |
| 1 | Screw |
| 1 | Washer |
| 1 | Locknut |
| 1 | Holding pin |

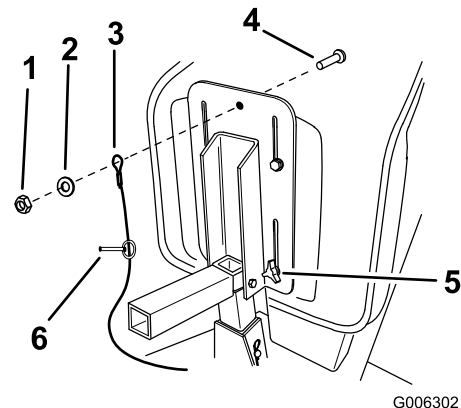


Figure 1

- | | |
|---|----------------|
| 1. Locknut | 4. Screw |
| 2. Washer | 5. Seat knobs |
| 3. Lanyard attached to the hydraulics lever clamp | 6. Holding pin |

Procedure

1. Tilt the seat forward, loosen the seat knobs and slide the seat forward.
2. Install the holding pin onto the lanyard.
3. Install the lanyard, attached to the hydraulics lever clamp, to the seat base with a screw, washer, and locknut (Figure 1).

Step 2


Changing the Tilt Cylinder Pin

Parts needed for this step:

| | |
|---|-----|
| 1 | Pin |
|---|-----|

Procedure

1. Block up the mount plate so that it cannot swing forward.



When you remove the tilt cylinder pin, the mount plate may swing forward. Your feet or hands, or those of bystanders, could be crushed.

Block up the mount plate before removing the tilt cylinder pin.

2. Remove the bolt and nut securing the upper tilt cylinder pin on the traction unit (Figure 2).

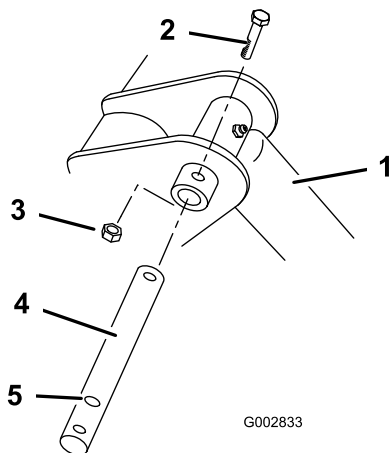


Figure 2

- | | |
|------------------|--------------------------|
| 1. Tilt cylinder | 4. New tilt cylinder pin |
| 2. Bolt | 5. Middle hole |
| 3. Nut | |

3. Using a hammer and punch, remove the tilt cylinder pin.

4. Install the new pin into position and secure it with the bolt and nut removed previously, using the middle hole on the pin (Figure 2).
5. Grease the pin using the fitting on the tilt cylinder.

Note: Leave the new pin installed, even when the backhoe is removed.

Step 3

Linking the Backhoe to the Traction Unit

Parts needed for this step:

| | |
|---|-----------|
| 2 | Link |
| 4 | Lynch pin |

Procedure

1. Connect the backhoe mount plate and hydraulic hoses to the traction unit as described in the traction unit *Operator's Manual*.
2. Start the engine.
3. Tilt the backhoe back until the backhoe link pin is approximately 6 inches (15 cm) from the tilt cylinder pin (Figure 3).

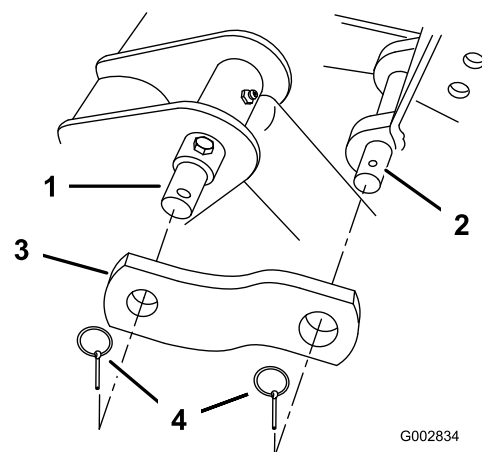


Figure 3

- | | |
|----------------------|--------------|
| 1. Tilt cylinder pin | 3. Link |
| 2. Backhoe link pin | 4. Lynch pin |



You could pinch and/or crush your hand when tilting the backhoe.

Keep away from the moving backhoe when tilting.

- Slide a link on one end of the tilt cylinder pin and the backhoe link pin and secure it with two lynch pins (Figure 3).

Note: You may need to move the attachment tilt lever to line up the holes in the links with the pins.

- Repeat step 4 for the other side.

Step

4

Preparing the Backhoe for Operation

Parts needed for this step:

- | | |
|---|------------------------|
| 1 | Hydraulics lever clamp |
|---|------------------------|

Procedure

- Drive to the work location.
- Set the throttle $\frac{2}{3}$ of the way to the fast (rabbit) position on the traction unit.
- Slide the end of the hydraulics lever clamp over the auxiliary hydraulics lever (Figure 4 or Figure 5).

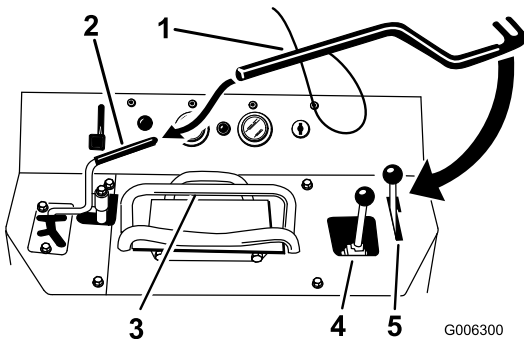


Figure 4

- | | |
|-------------------------------|-------------------------------------|
| 1. Hydraulics lever clamp | 4. Loader arm/attachment tilt lever |
| 2. Auxiliary hydraulics lever | 5. Parking brake |
| 3. Reference bar | |

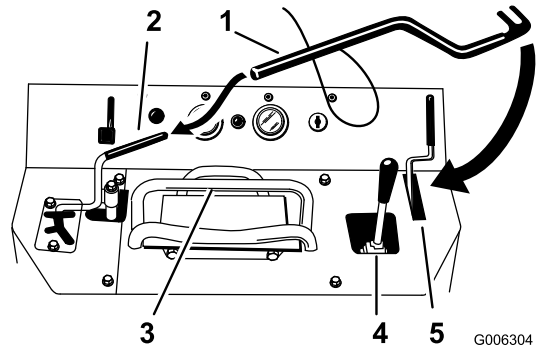


Figure 5

- | | |
|-------------------------------|-------------------------------------|
| 1. Hydraulics lever clamp | 4. Loader arm/attachment tilt lever |
| 2. Auxiliary hydraulics lever | 5. Parking brake |
| 3. Reference bar | |

- Pull the lever and clamp down to the reference bar so that the clamp routes behind the loader arm/attachment tilt lever.
- Set the parking brake, to the **on** position, into the slot so that the clamp catches under the brake lever (Figure 6 or Figure 7).

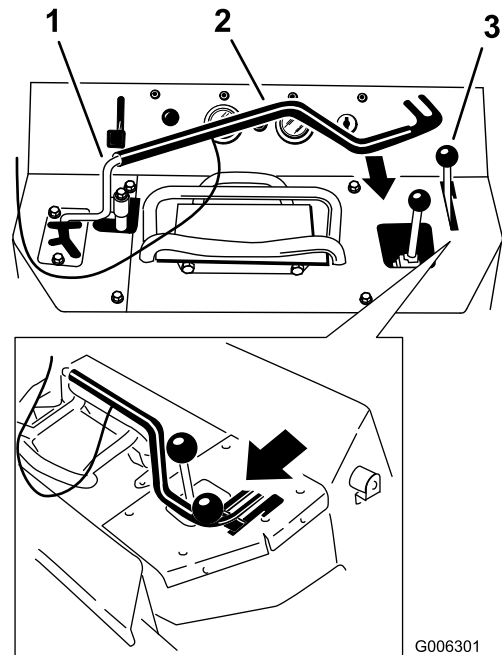


Figure 6

- | | |
|-------------------------------|------------------|
| 1. Auxiliary hydraulics lever | 3. Parking brake |
| 2. Hydraulics lever clamp | |

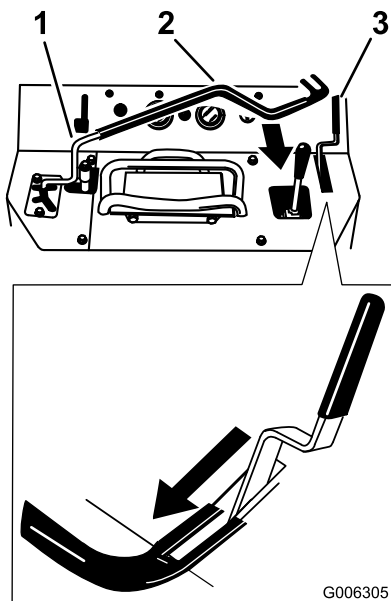


Figure 7

1. Auxiliary hydraulics lever
2. Hydraulics lever clamp
3. Parking brake

!

If the traction unit moves while an operator is seated on the backhoe, the traction unit and backhoe could tip over. Someone may be pinned or seriously injured by the machine if it overturns.

Set the parking brake before anyone gets on the backhoe and do not attempt to move the traction unit while sitting on the backhoe.

6. Use the backhoe as directed in the *Backhoe Operator's Manual*.

Step

5

Disconnecting the Backhoe from the Traction Unit

No Parts Required

Procedure

When finished using the backhoe, disconnect and store the links as described below:

1. Start the engine.

2. Remove the lynch pins securing the links and remove the links (Figure 3).

Note: You may need to adjust the tilt lever slightly to loosen the links.

3. Secure the links and two lynch pins for storage on the pins on the backhoe and the other two lynch pins on the traction unit tilt cylinder pin.
4. Continue disconnecting the backhoe as described in the backhoe and traction unit *Operator's Manuals*.

Storage

Storing the Hydraulics Lever Clamp

1. Remove the hydraulics lever clamp from the controls.
2. Secure the clamp on the control console side with the holding pin attached to the lanyard (Figure 8).

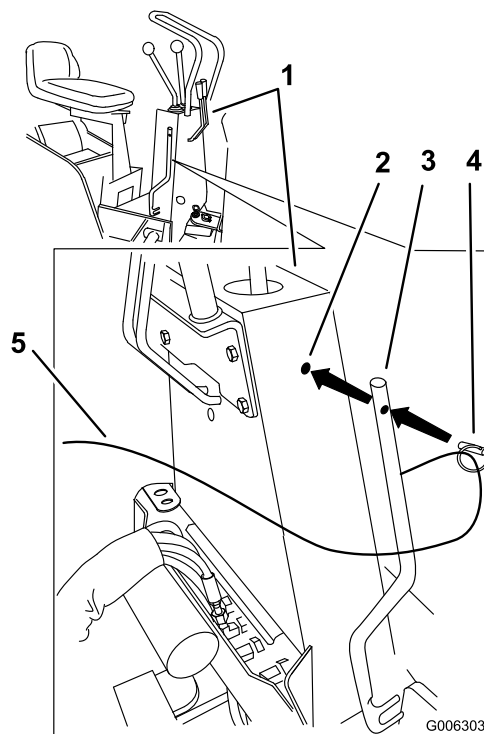


Figure 8

1. Controls console
2. Hole in the side of the console
3. Hydraulics lever clamp
4. Holding pin
5. Lanyard