



## Chute Gate Kit

### 34in and 40in Mower Decks for Z300 Series Z Master Riding Mowers

Model No. 78520

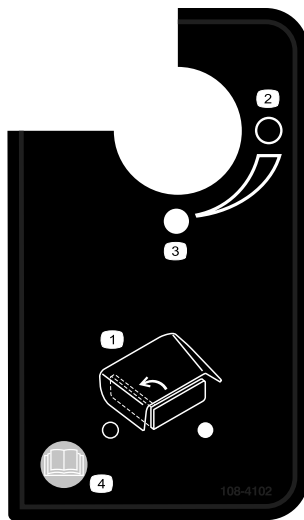
## Installation Instructions

# Safety

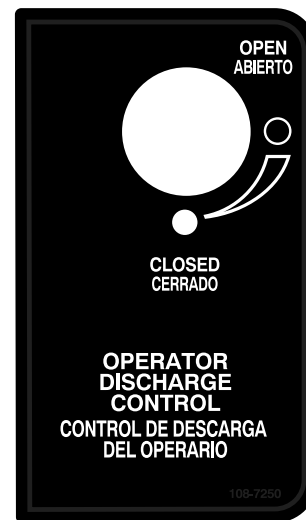
## Safety and Instructional Decals



Safety decals and instructions are easily visible to the operator and are located near any area of potential danger. Replace any decal that is damaged or lost.



108-4102



108-7250

- |                               |  |
|-------------------------------|--|
| 1. Operator discharge control | 3. Closed                              |
| 2. Open                       | 4. Read the <i>Operator's Manual</i> . |

# Installation

## Loose Parts

Use the chart below to verify that all parts have been shipped.

Procedure	Description	Qty.	Use
<b>1</b>	No parts required	–	Remove the existing side discharge chute.
<b>2</b>	Side discharge chute Bolt, (5/16 x 7–1/2 inches) Locknut, (5/16 inch) Plastic spacer Spring	1 1 1 1 1	Install the side discharge chute with gate.
<b>3</b>	Handle assembly	1	Install the handle to the machine.
<b>4</b>	Plastic cable ties Adhesive back mount	2 2	Secure the cables.
<b>5</b>	International decal	1	Install the decal for international mowers only.

# 1

## Removing the Existing Side Discharge Chute

### No Parts Required

### Procedure

1. Disengage the PTO, set the parking brake, and chock or block the drive wheels.
2. Turn off the engine, remove the key, and wait for all moving parts to stop before leaving the operating position.
3. Remove the locknut, bolt, spring and spacer holding the deflector to the pivot brackets (Figure 1).  
Remove the grass deflector.

# 2

## Installing the Side Discharge Chute with Gate

### Parts needed for this procedure:

1	Side discharge chute
1	Bolt, (5/16 x 7-1/2 inches)
1	Locknut, (5/16 inch)
1	Plastic spacer
1	Spring

### Procedure



An uncovered discharge opening could allow the lawn mower to throw objects in the operator's or bystander's direction and result in serious injury. Also, contact with the blade could occur.

- Never operate the lawn mower unless you install a cover plate, a mulch plate, or a grass chute and catcher.
- Make sure the grass deflector is in the down position.

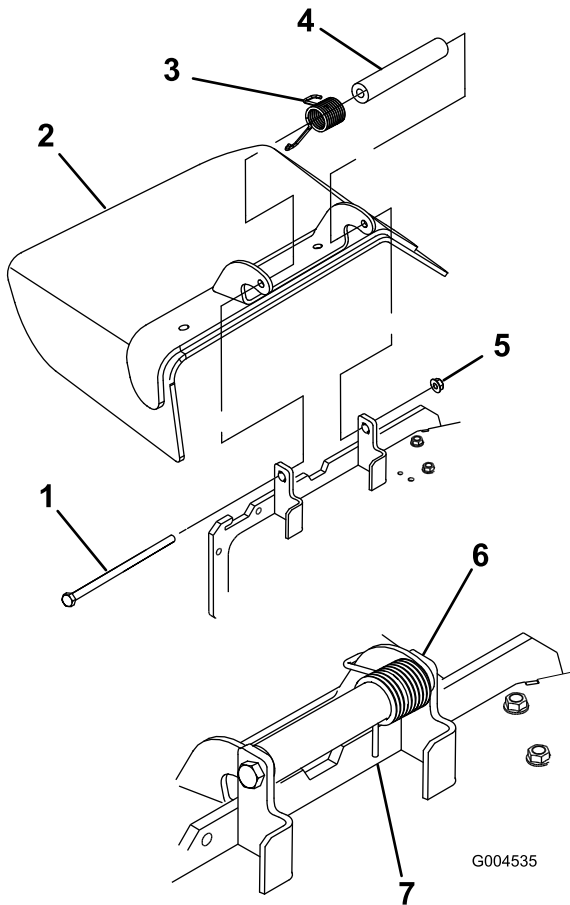


Figure 1

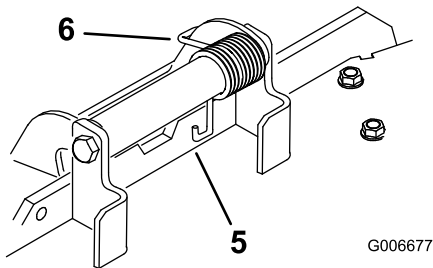
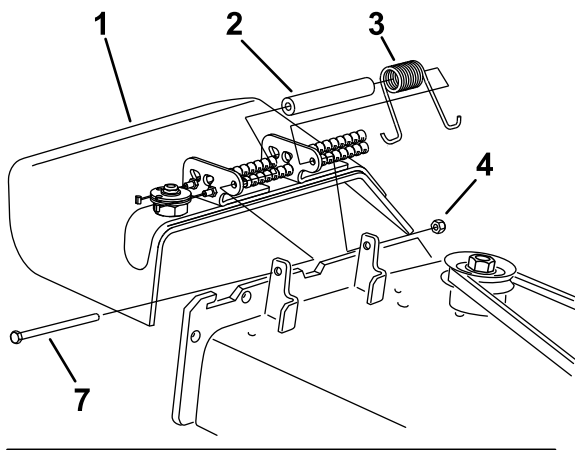
1. Bolt
2. Grass Deflector
3. Spring
4. Spacer
5. Locknut
6. Spring installed
7. J hook end of spring placed behind deck edge before installing bolt

1. Place the new spacer and spring onto grass deflector. Place one end of spring behind deck edge.

**Note:** Make sure the end of the spring is installed behind the deck edge before installing the bolt as shown in Figure 2.

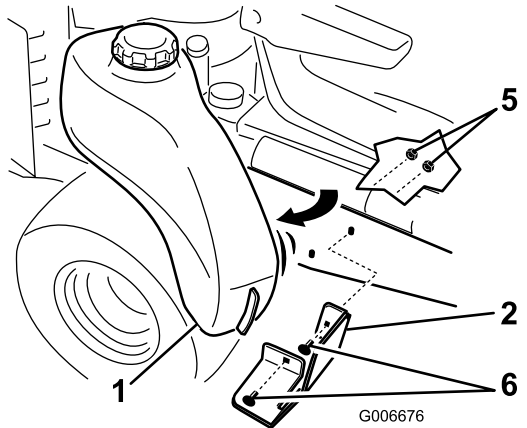
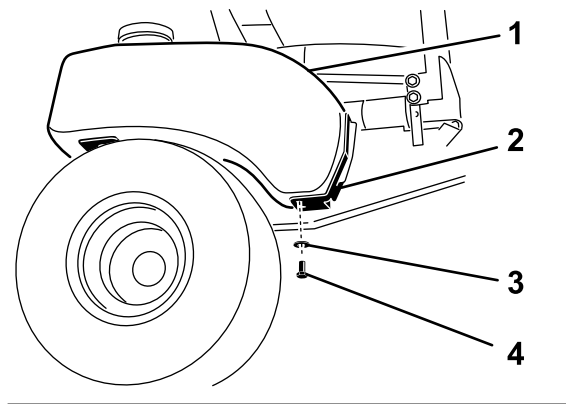
2. Install the bolt and nut. Place the end of the spring above the deflector bracket (Figure 2).
3. Tighten the nut until the end of the bolt is flush with the end of the nut. Do not over tighten.

**Important:** The grass deflector must be able to lower down into position. Lift the deflector up to test that it lowers into the full down position.



**Figure 2**

- |                    |  |
|--------------------|--|
| 1. Grass Deflector | 5. End of the spring is installed behind the deck edge |
| 2. Spacer          | 6. Spring installed                                    |
| 3. Spring          | 7. Bolt  |
| 4. Locknut         |  |



**Figure 3**

- |                 |                  |
|-----------------|------------------|
| 1. Fuel tank    | 4. Bottom bolt   |
| 2. Tank bracket | 5. Locknut       |
| 3. Washer       | 6. Carriage bolt |

# 3

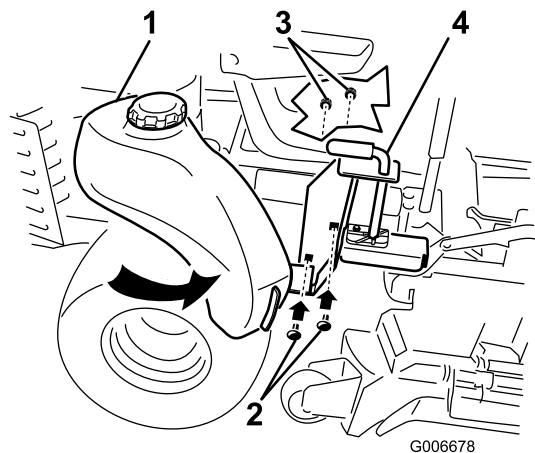
## Installing the Handle to the Machine

### Parts needed for this procedure:

1	Handle assembly
---	-----------------

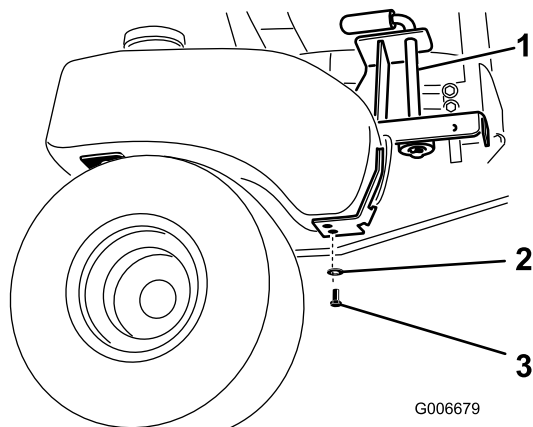
### Procedure

1. Remove the bottom bolt and washer that holds the right side gas tank to the machine (Figure 3).
2. Rotate the tank away from the machine.
3. Remove the tank bracket from the side of the machine (Figure 3). Save the bolts and nuts.



**Figure 4**

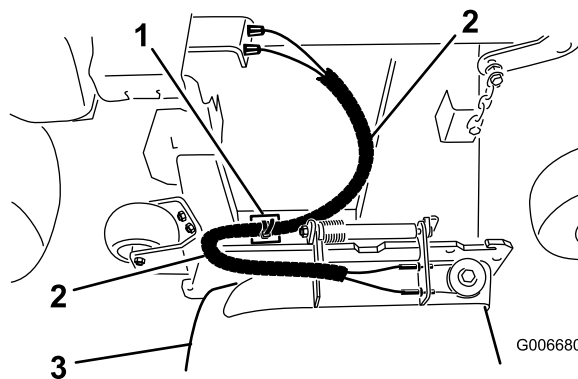
- |                  |                   |
|------------------|-------------------|
| 1. Fuel tank     | 3. Locknut        |
| 2. Carriage bolt | 4. Handle/bracket |



**Figure 5**

1. Handle
2. Washer

3. Bottom bolt



**Figure 6**

1. Plastic cable tie
2. Ensure the cables do not get pinched or kinked here
3. Plastic mount

## 4

### Securing the Cables

#### Parts needed for this procedure:

2	Plastic cable ties
2	Adhesive back mount

#### Procedure

Secure the cables to the mower deck to ensure the cables do not interfere with the rear tires. Use the following figures for the correct deck configuration that your machine has.

1. Lower the mower deck to the lowest position.
2. Use only one plastic mount and plastic tie and save the other for a spare. Install the adhesive back plastic mount on a smooth clean surface where the cables will not be pinched or kinked when the mower deck is raised and lowered (Figure 6).
3. Thread the cable tie through the plastic mount and secure the cables with the cable tie (Figure 6).

## 5

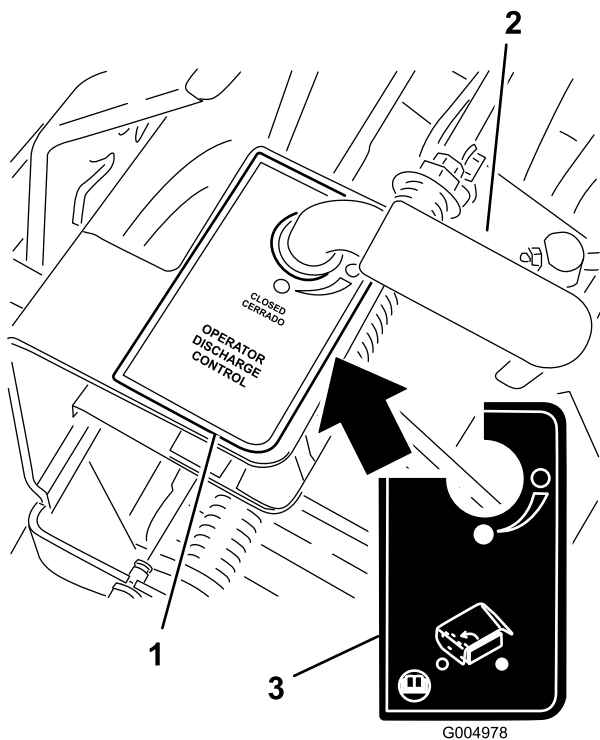
### Installing the Decal for International Mowers Only

#### Parts needed for this procedure:

1	International decal
---	---------------------

#### Procedure

Install the decal over the existing decal (Figure 7).



**Figure 7**

- 1. Existing decal
- 2. Handle
- 3. International decal

# Operation

## Using the Chute Gate

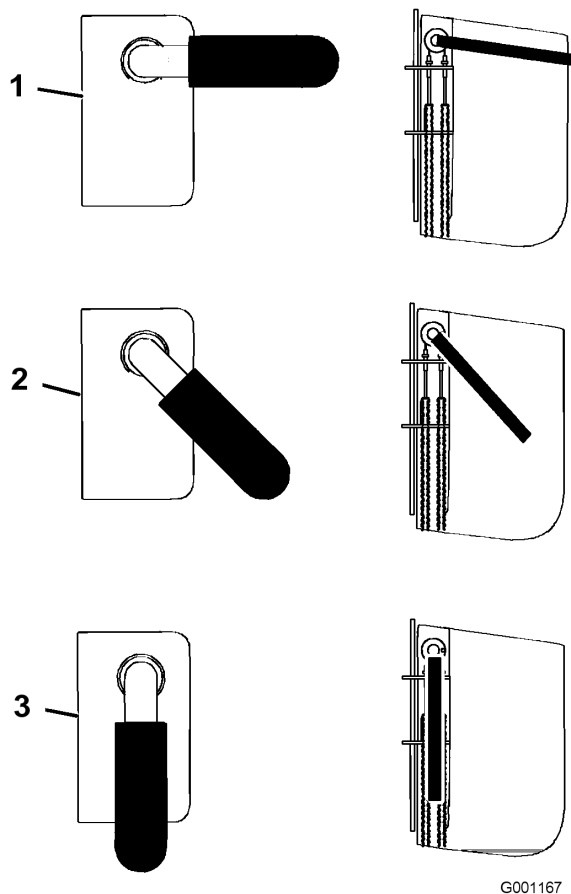


The chute gate does not seal the discharge opening. Grass and objects maybe thrown in a bystander's direction and result in serious injury.

- Be aware of the mower discharge direction and do not point it at anyone.
- Remove obstacles such as rocks, tree limbs, etc. from the mowing area.
- Never put your hands or feet under the mower or discharge area.
- Never try to clear the discharge area or mower blades unless the engine is off and the key is removed.

Use the chute gate to temporarily stop or deflect grass clippings away from sidewalks, parking lots, patios, or anywhere you do not want grass clippings to land. The chute gate has 3 positions: open, 45 degree angle, and closed.

- Rotate the chute gate handle to the open position to allow grass clippings to discharge (Figure 8).
- Rotate the chute gate handle to the 45 degree angle to deflect the grass clippings (Figure 8).
- Rotate the chute gate handle to the closed position to stop the grass clippings (Figure 8).



**Figure 8**

1. Chute gate open
2. Chute gate at 45 degree angle
3. Chute gate closed



**Count on it.**