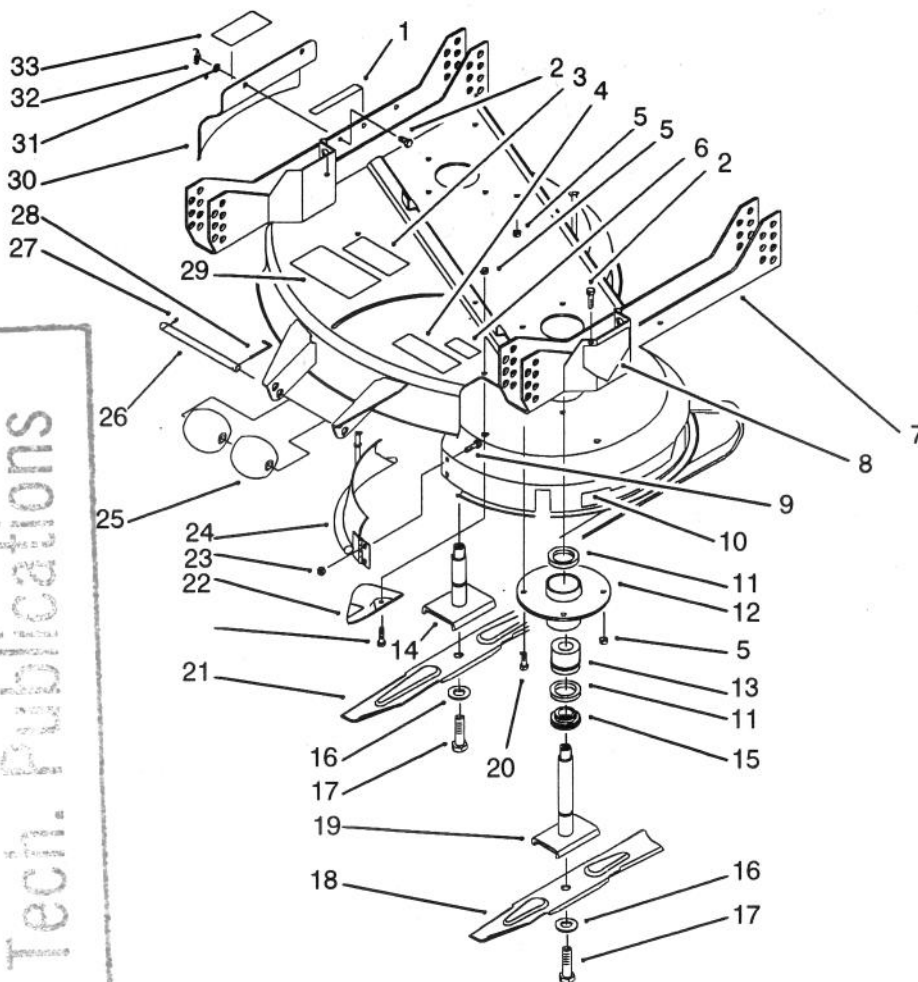




<b>MODEL NO. 30137-20001 &amp; UP</b>	<b>PARTS CATALOG</b>
<b>PROLINE 37"</b> <b>RECYCLER® Rotary Cutting Unit</b>	



ONLY COPY  
DO NOT REMOVE

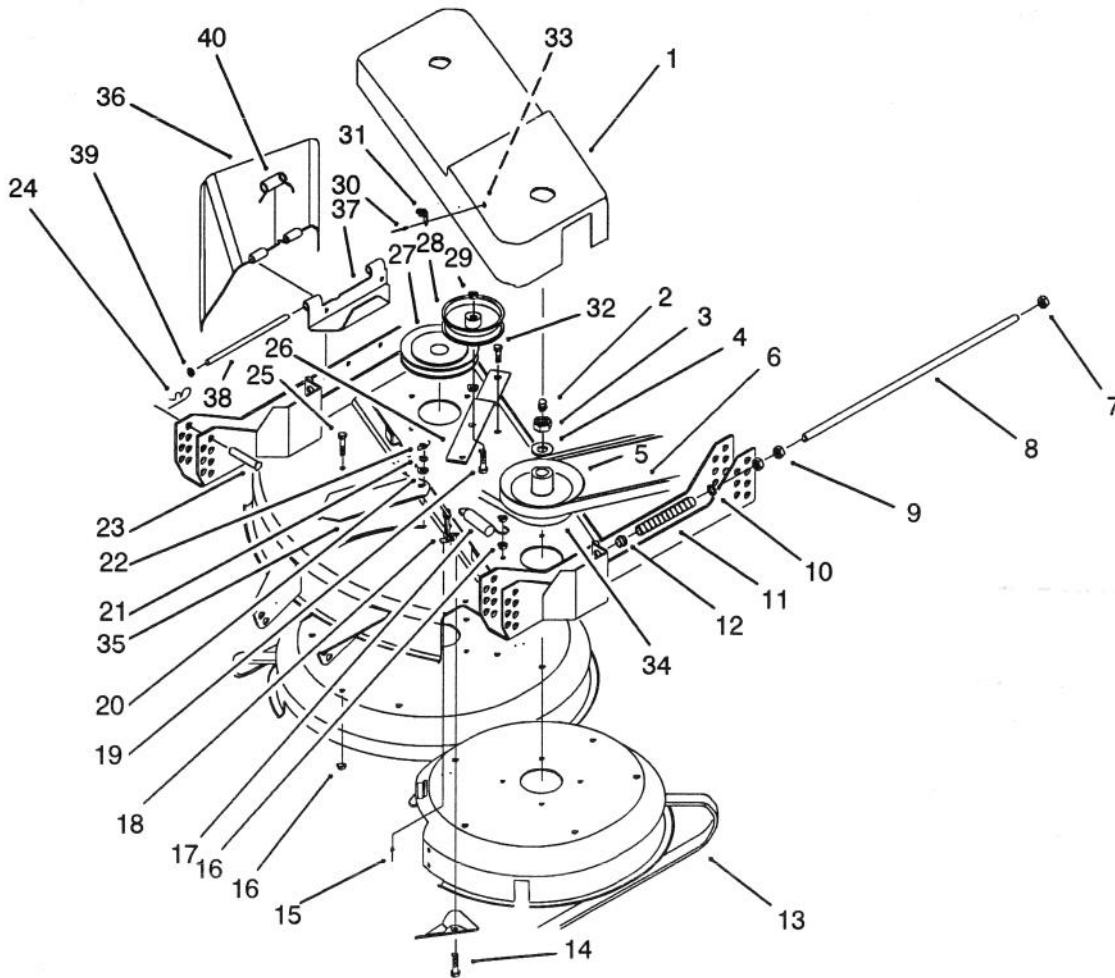
Tech. Publications

C-1078

## DECK & SPINDLE ASSEMBLY

Ref. No.	Part No.	Description	No. Used
1	68-3650	Decal - Danger	1
2	322-5	Screw - Hex Hd. Cap	15
3	68-8340	Decal - Caution	1
4	85-7080	Decal - Discharge Door	1
5	3296-29	Nut - Lock	15
6	53-4860	Decal - Danger	1
7	14-7129	Deck Support (Incl. Ref. #3, 4, 6, 8, & 29)	1
8	43-8480	Decal - Danger	1
9	3229-22	Bolt - Carriage	2
10	84-4340	Decal - 37"	1
11	253-139	Seal - Wave	4
12	82-5990	Housing - Spindle	2
13	46-8530	Bearing Assembly	2
14	84-4430	Shaft - Spindle	1
15	27-0950	Spacer - Spindle Bearing	2
16	3253-8	Washer - Lock	2

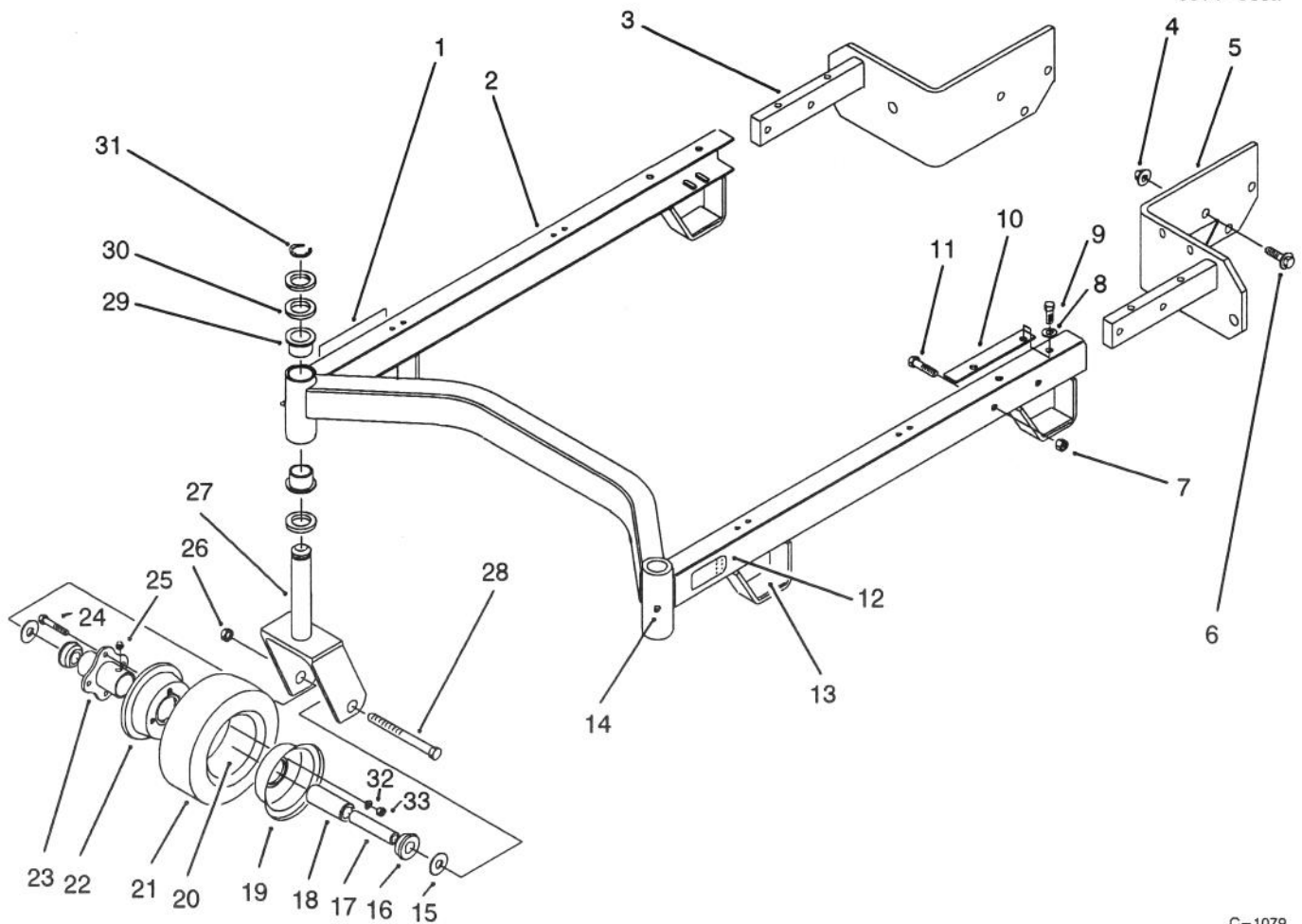
Ref. No.	Part No.	Description	No. Used
17	51-4060	Bolt - Blade	2
18	84-4370	Blade - 17"	1
19	51-3552	Shaft - Spindle	1
20	322-6	Screw - Hex Hd. Cap	1
21	84-4380	Blade - 21"	1
22	84-5760	Plate - Kicker	7
23	32149-2	Nut - Keps	2
24	84-5840	Cover - Front	1
25	29-4820	Roller	2
26	40-6400	Shaft - Roller	1
27	3272-11	Pin - Cotter	1
28	57-0690	Pin - Special Cotter	1
29	66-1340	Decal - Danger	1
30	86-9870	Cover - Discharge Chute	1
31	3255-8	Washer - Ext. Tooth	2
32	32103-27	Nut - Wing	2
33	82-7490	Decal - Danger	1



C-1073

## COVER & PULLEY ASSEMBLY

Ref. No.	Part No.	Description	No. Used	Ref. No.	Part No.	Description	No. Used
1	84-4350	Cover - Pulley	1	20	3256-24	Washer - Flat	2
2	302-2	Fitting - Grease	2	21	3255-8	Washer - Ext. Tooth	1
3	32146-20	Nut - Lock	2	22	32103-27	Nut - Wing	1
4	7-4150	Spacer - Bearing	2	23	283-55	Pin - Clevis	4
5	84-4360	Pulley - Center	1	24	3290-355	Cottor - Hairpin	4
6	84-4390	V-Belt - Deck Drive	1	25	322-5	Screw - Hex Hd. Cap	4
7	3296-45	Nut - Lock	2	26	84-4330	Lever - Idler	1
8	74-0310	Shaft - Adjusting	2	27	84-4440	Pulley - Outside	1
9	3218-5	Nut - Jam	4	28	36-3220	Pulley - Idler	1
10	41-8440	Washer - Flat	2	29	3296-39	Nut - Hex	1
11	74-0290	Spring - Compression	2	30	3290-415	Rivet - Pop	4
12	256-156	Bushing	2	31		Keeper - Latch	2
13	14-7119	Deck		32	19-1470	Bolt - Shoulder	1
		(Incl. Ref. #1 & 10 on pg. 1)	1	33	3269-10	Washer - Backup	4
14	322-6	Screw - Hex Hd. Cap	1	34	84-4410	V-Belt - Deck	1
15	3290-271	Rivet - Pop	4	35	84-4420	Cover - Slot	1
16	3296-29	Nut - Lock	6	36	82-7520	Deflector - Discharge	1
17	54-1160	Spring - Extension	1	37	82-7530	Hinge - Deflector	1
18	117343	Latch Assembly (Incl. Ref. #31)	2	38	82-7540	Pin - Hinge	1
19	323-9	Screw - Hex Hd. Cap	1	39	32151-56	Ring - Retaining	2
				40	40-6230	Spring - Torsion	1



C-1079

## CARRIER FRAME ASSEMBLY

Ref. No.	Part No.	Description	No. Used	Ref. No.	Part No.	Description	No. Used
1	68-8360	Decal - H.O.C.	1	19	68-8930	Wheel Half - male	2
2	55-4631	Suspension Frame W.A.	1	20	68-8950	Tube w/Valve	2
3	86-7110	Angle Bracket W.A. - R.H.	1	21	68-8960	Tire	2
4	32128-23	Nut - Lock	6	22	68-8920	Wheel Half - Female	2
5	86-7100	Angle Bracket W.A. - L.H.	1	23	68-8940	Hub - Centered	2
6	3234-6	Screw - Hex Washer Hd.	6	24	54-8890	Bolt - Wheel	8
7	32152-2	Nut - Lock	4	25	302-61	Fitting - Grease	2
8	3256-24	Washer - Flat	4	26	32153-5	Nut - Lock	2
9	3235-21	Screw - Hex Hd. Cap	4	27	74-0250	Front Castor Fork W.A.	2
10	62-6980	Shim - Carrier	2	28	325-19	Screw - Hex Hd. Cap	2
11	323-9	Screw - Hex Hd. Cap	4	29	28-9290	Bushing	4
12	74-0940	Decal - H.O.C.	1	30	3-6781	Washer - Thrust	8
13	74-0340	Cushion - Rubber	4	31	32151-91	Ring - Retaining	2
14	302-5	Fitting - Grease	2	32	3253-4	Washer - Lock	8
15	3256-6	Washer - Flat	4	33	3217-6	Nut - Lock	8
16	62-5580	Bushing	4	*	13-3869	Caster Wheel Assembly (Incl Ref. #16 & 18)	2
17	68-8980	Spanner	2				
18	62-5570	Bearing	2				

