



Road Light Kit

Groundsmaster® 7200 Series Mower

Model No. 30374

Form No. 3358-551 Rev A

Installation Instructions

Note: The traction unit must be equipped with the Auxiliary Power Unit Kit, Model 30382.

Installation

Loose Parts

Use the chart below to verify that all parts have been shipped.

Procedure	Description	Qty.	Use
1	No parts required	—	
2	Decal Switch	1 2	Install the switches.
3	Dual rate flasher Acorn head self-tapping screws	1 2	Install the dual rate flasher.
4	Headlight Carriage bolt Locknut	2 2 2	Install the headlights.
5	RH tail light flasher LH tail light flasher Work light RH bracket LH bracket Bolt (M8–1.25) Carriage bolt Locknut U-bolt Locknut (3/8–16 inch)	1 1 2 1 1 4 2 2 4 4	Install the tail light flasher.
6	Wire harness Cable tie	1 7	Install the wire harness.
7	SMV emblem SMV emblem bracket Bolt (1/4 x 3/4 inch) Locknut U-bolt Locknut (3/8–16)	1 1 2 2 2 2	Install the SMV emblem.
8	No parts required	—	

1

Preparing for Installation

No Parts Required

Procedure

1. Unlatch and raise the hood. Secure the hood in the raised position with the prop rod.
2. Disconnect the negative battery cable from the battery.

2

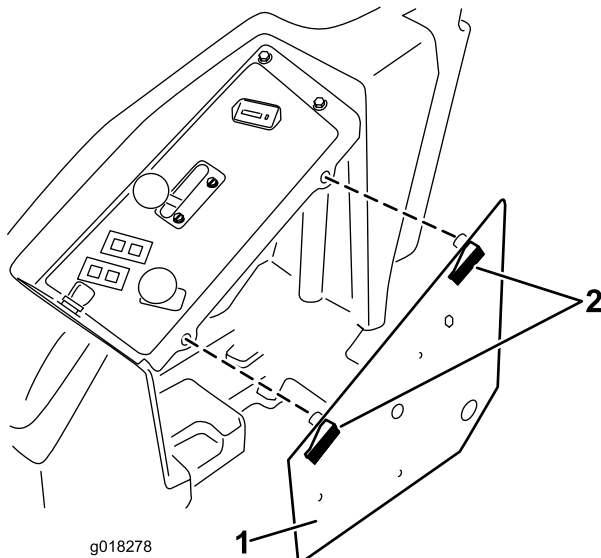
Installing the Switches

Parts needed for this procedure:

1	Decal
2	Switch

Procedure

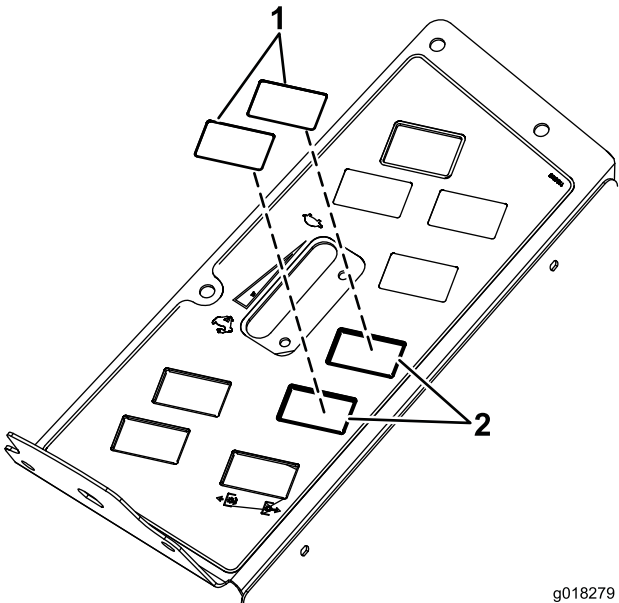
1. Unlatch the control panel cover and move it aside (Figure 1).



g018278

Figure 1

1. Control panel
2. Latch

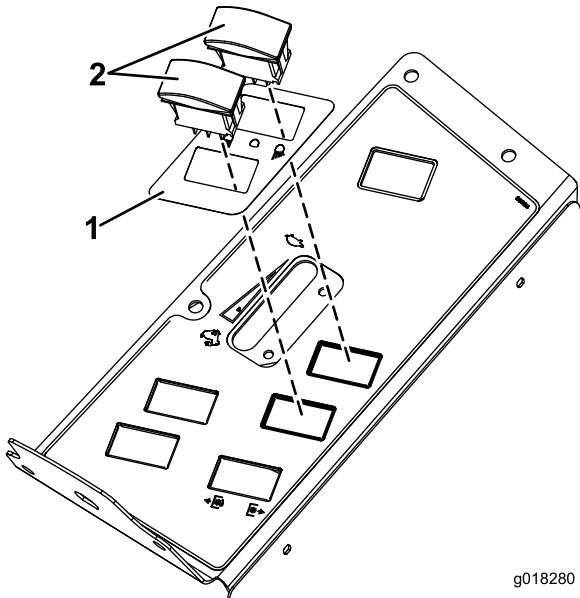


g018279

Figure 2

1. Knock out plug
2. Knock out plug location

3. Clean the control panel surface and affix the decal around the exposed holes (Figure 3)



g018280

Figure 3

1. Decal
2. Switch

4. Insert a switch into each hole (Figure 3). Position the switch so that the flat side is toward the operator.

2. Remove the two knock out plugs indicated in Figure 2.

3

Installing the Dual Rate Flasher

Parts needed for this procedure:

1	Dual rate flasher
2	Acorn head self-tapping screws

Procedure

Mount the dual rate flasher to the right frame panel with 2 acorn head self-tapping screws (Figure 4). Position the flasher so the wires lead downwards.

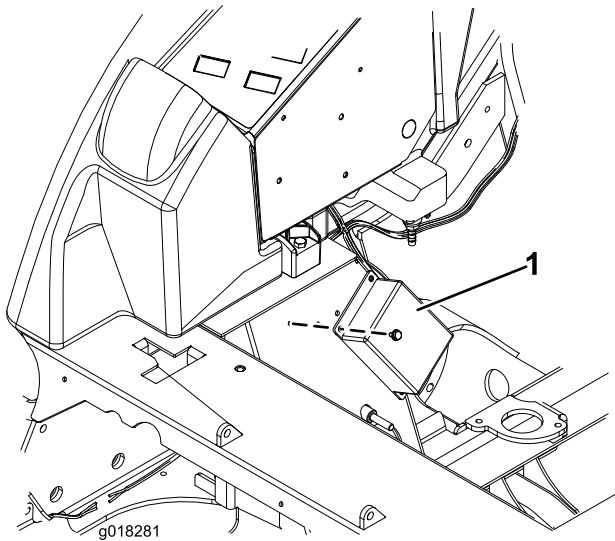


Figure 4

1. Dual rate flasher

4

Installing the Headlights

Parts needed for this procedure:

2	Headlight
2	Carriage bolt
2	Locknut

Procedure

1. Locate the pilot hole in each mounting tab on the front of the carrier frame (Figure 5).

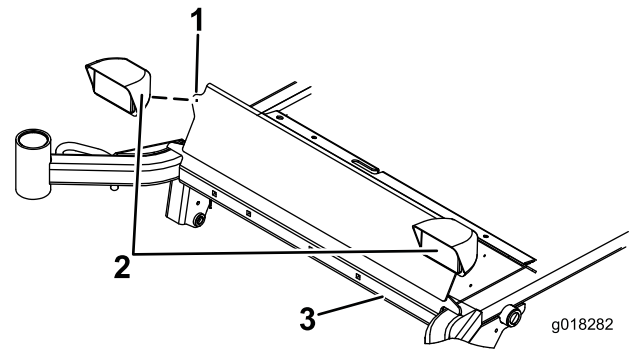


Figure 5

1. Mounting tab
2. Headlight
3. Carrier frame

2. Drill each hole out to a 0.344 inch (0.87 cm) diameter.
3. Secure a headlight to each tab using a carriage bolt and a locknut (5/16–18). Discard the lock washers and nuts included with the lights (Figure 5).

5

Installing the Tail Light Flashers

Parts needed for this procedure:

1	RH tail light flasher
1	LH tail light flasher
2	Work light
1	RH bracket
1	LH bracket
4	Bolt (M8–1.25)
2	Carriage bolt
2	Locknut
4	U-bolt
4	Locknut (3/8–16 inch)

Procedure

1. Mount the appropriate tail light flasher to each light bracket, keeping the black lens towards the front of the machine, using 2 bolts (M8–1.25) positioned as shown in (Figure 6). Tighten the bolts to 6 ft–lbs (8.1 N–m).

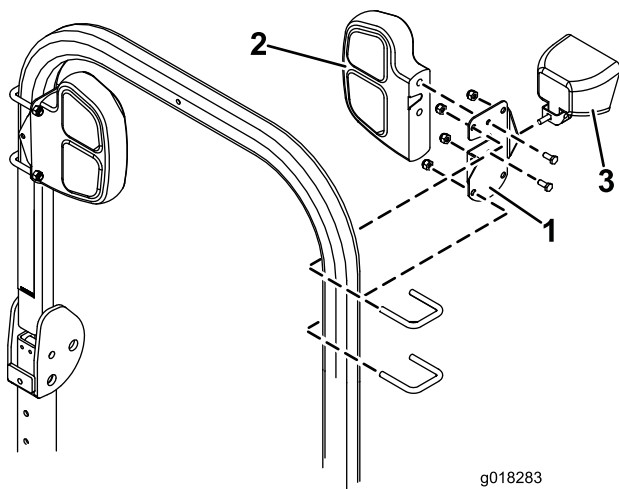


Figure 6

1. Light bracket
2. Tail light flasher
3. Work light

2. Secure a work light to each bracket using a carriage bolt and locknut (Figure 6). Discard the lock washer and nut included with the lights.

Note: The light can be mounted to the rear of the bracket to shine rearward, to the front of the bracket to shine forward, or pointed to the side to illuminate the edge of the mower deck. Note that the lights are not as

protected when mounted to the side of the brackets; watch out for tree limbs. Mount the lights as high as possible on the ROPS. You may have to move the lights if a canopy is installed.

3. Mount each of the light brackets to the inside of the ROPS using 2 U-bolts and 2 locknuts (3/8–16), positioning it as shown in Figure 6.
4. Tighten the locknuts evenly to avoid distorting the light bracket.

6

Installing the Wire Harness

Parts needed for this procedure:

1	Wire harness
7	Cable tie

Procedure

Refer to Figure 7 throughout the wire harness installation procedure for the connector locations.

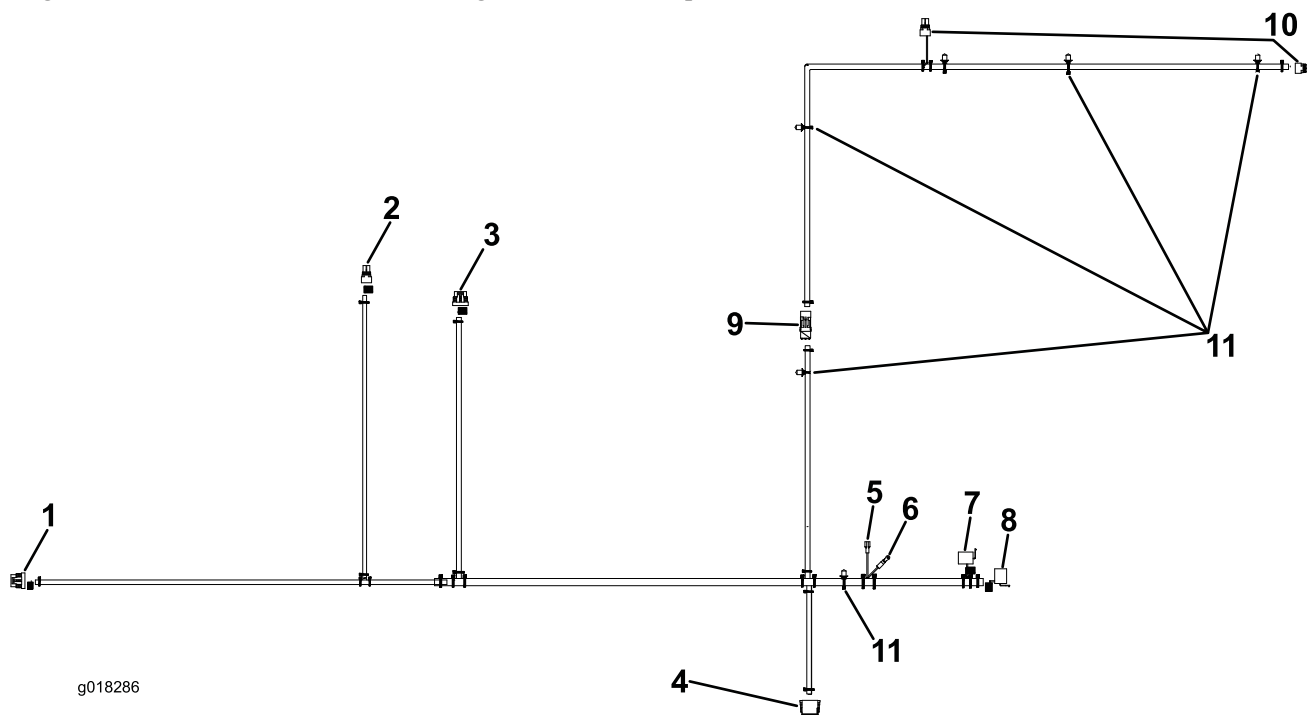


Figure 7

1. Left tail light
2. Rear work light
3. Right tail light
4. Dual flasher
5. Power source
6. Ground
7. Turn signal switch
8. Light switch
9. Harness connector
10. Front headlight
11. Harness clip

1. Plug the harness connectors into the front head lights.
2. Route the harness under the carrier frame to the right side of the machine.

3. Install the harness clips into the holes in the bottom of the carrier frame.
4. Route the harness under the floor and along the right frame channel to the dual rate flasher.
5. Insert the harness clips into the frame holes.
6. Plug the harness connector into the dual rate flasher connector.
7. Route the harness under the control panel.
8. Plug the harness connectors into the light and turn signal switch connectors. Plug the turn signal harness connector into the front switch.
9. Connect the harness wire ring terminal to the auxiliary power unit ground.
10. Plug the harness power connector into the auxiliary power unit power source.
11. Install the 15 amp fuse into the fuse block.
12. Insert a rubber grommet into each frame cross member hole (Figure 8).

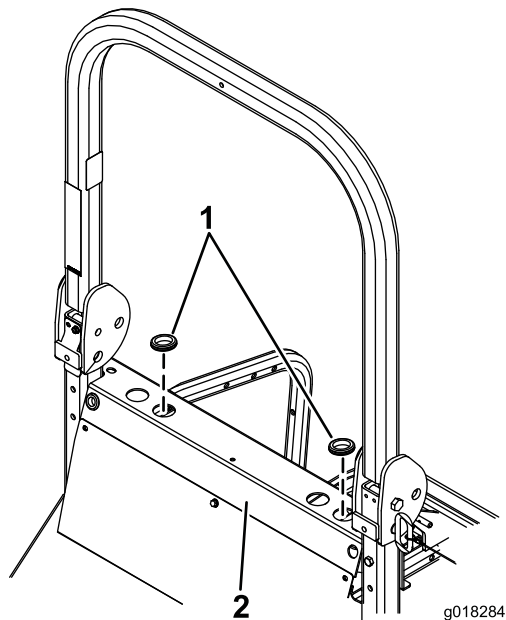


Figure 8

1. Grommet
2. Frame cross member

13. Route the harness under the frame and up behind the seat.
14. Route the harness up the right ROPS tube, into the cross member, and out through the grommets.
15. Connect the harness to the rear flashers and work light.
16. Secure the harness to the cross member with 2 cable ties. If there is a harness already secured to the cross member, secure the new harness to it using a cable tie (Figure 9).
17. Secure the harness to the ROPS with 5 cable ties (Figure 9).

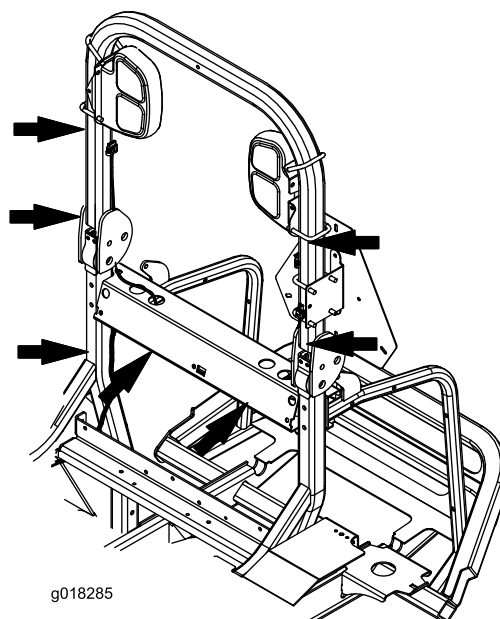


Figure 9

Note: Use cable ties where necessary to prevent the harness from possible damage.

7

Installing the SMV Emblem

Parts needed for this procedure:

1	SMV emblem
1	SMV emblem bracket
2	Bolt (1/4 x 3/4 inch)
2	Locknut
2	U-bolt
2	Locknut (3/8-16)

Procedure

1. Mount the slow moving vehicle (SMV) emblem to the SMV emblem bracket with 2 bolts (1/4 x 3/4 inch) and 2 locknuts (Figure 10).

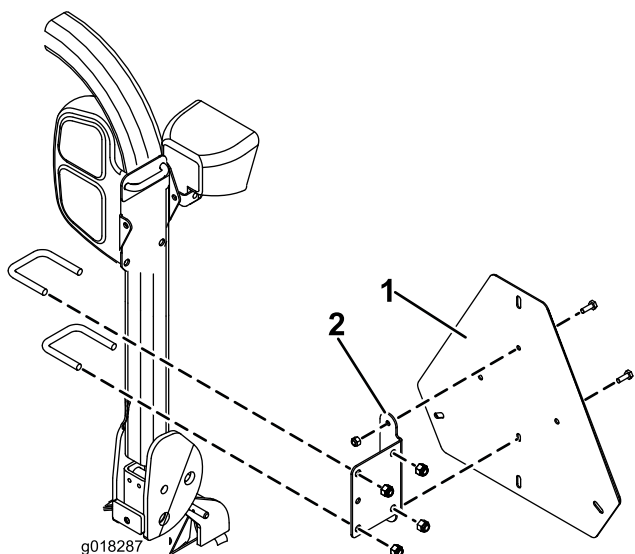


Figure 10

1. SMV emblem
2. SMV emblem bracket

2. Loosely mount the SMV emblem bracket to the outside of the left ROPS post with 2 U-bolts and 2 locknuts (3/8–16) (Figure 10).

Note: Install the SMV emblem so it does not extend above the ROPS.

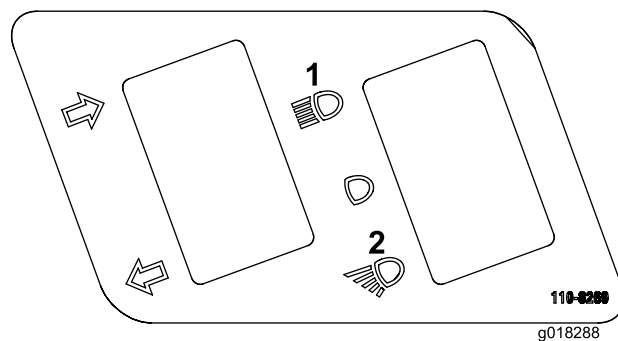


Figure 11

1. Driving lights
2. Work light

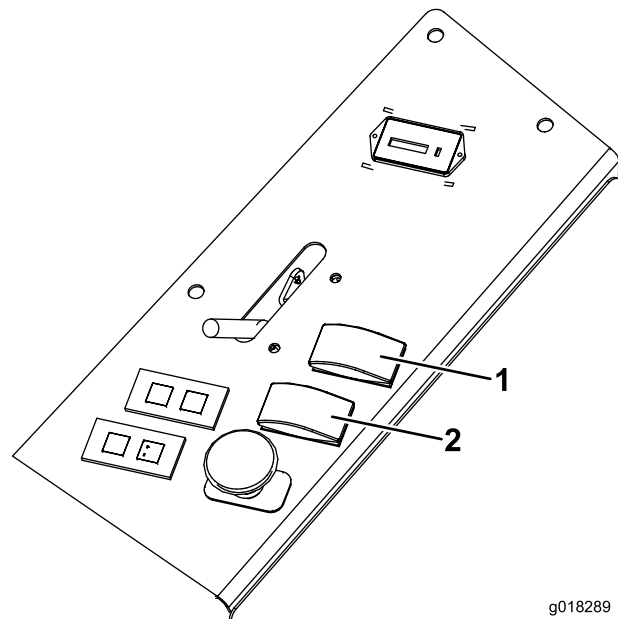


Figure 12

1. Light switch
2. Turn signal switch

8

Finalizing the Installation

No Parts Required

Procedure

1. Install and latch the control panel cover.
2. Attach the negative battery cable to the battery post.
3. Close and latch the hood.

Operation

Operating the Switches

Light Switch

Press the far side of the light switch to activate the front headlights and the rear flashers (Figure 11 and Figure 12).

Press the near side of the light switch to activate the front headlights and the rear work lights. The flashers will not activate (Figure 11 and Figure 12).

Turn Signal Switch

Press the far side of the turn signal switch to activate the right turn signal (Figure 11 and Figure 12).

Press the near side of the turn signal switch to activate the left turn signal (Figure 11 and Figure 12).

- If turning **left**:
 - The left combination warning/turn/tail lamp will illuminate as follows:
 - ◇ The amber lamp will flash.
 - ◇ The low intensity red tail lamp will be on steady.
 - ◇ The high intensity red tail lamp will be on a high rate of flash.
 - The right combination warning/turn/tail lamp will illuminate as follows:

- ◇ The amber lamp will be on steady.
- ◇ The red tail lamp will be on steady (both high and low intensity).
- If turning **right**:
 - The right combination warning/turn/tail lamp will illuminate as follows:
 - ◇ The amber lamp will flash.
 - ◇ The low intensity red tail lamp will be on steady.
 - ◇ The high intensity red tail lamp will be on a high rate of flash.
 - The left combination warning/turn/tail lamp will illuminate as follows:
 - ◇ The amber lamp will be on steady.
 - ◇ The red tail lamp will be on steady (both high and low intensity).

Aiming the Headlights

1. Loosen the mounting nuts and position each headlight so that it points straight ahead. Tighten the mounting nut just enough to hold the headlight in position.
2. Place a flat piece of sheet metal over the face of the headlight.
3. Mount a magnetic protractor onto the plate. While holding the assembly in place, carefully tilt the headlight downward 3 degrees, then tighten the nut.
4. Repeat the procedure on the other headlight.



Count on it.