



Count on it.

Form No. 3358-552 Rev A

Parts Catalog

Road Light Kit

Groundsmaster® 7200 Series Mower

Model No. 30374

Ordering Replacement Parts

To order replacement parts, please supply the part number, the quantity, and the description of each part desired.

Understanding Reference Numbers

Each identified part in an illustration has a reference number. The reference number for a part also appears in the parts list, along with other information about the part.

This catalog uses two special reference number formats, one to indicate parts in a service assembly and another to indicate the quantity of a given part in an illustration.

Service Assembly Reference Numbers

Parts in service assemblies have reference numbers in the form a:b. The a represents the reference number of the entire service assembly and the b represents a sequential number unique to each part within the service assembly.

For example, a wheel assembly might be identified by reference number 6, the tire by 6:1, the valve by 6:2, and the wheel by 6:3. When you order the assembly identified by reference number 6, you receive all parts identified by reference numbers 6:1, 6:2, and 6:3. However, you may also order any part individually. Reference numbers of this type appear in illustration and in parts lists.

Reference Numbers Indicating Quantity

In an illustration, if a reference number indicates more than one part, the reference number has the form nX y. The n represents the quantity of the part, the X is the multiplication symbol, and the y represents the reference number.

For example, in an illustration, the reference number 2X 37 means that two of the parts identified by reference number 37 are indicated.

List of Abbreviations

AR: as required

ASM: assembly

BBC: blade brake control

BHTF: button head thread forming

CARR: carriage

CCW: counter clockwise

CW: clockwise

DEG: degrees

DPA: Dual Point Adjustment

ECM: electronic control module

EXT: external

FH: flat head

GA: gauge

HD: heavy-duty

HF: hex flange

HH: hex head

HHF: hex head flange

HHFTF: hex head flange thread forming

HJ: hex jam

HLH: hex lag head

HOC: height-of-cut

HSBH: hex socket button head

HSFH: hex socket flat head

HSH: hex socket head

HWH: hex washer head

HWHTF: hex washer head thread forming

HYD: hydraulic

LH: left hand

LPG: Liquid Propane Gas

NI: nylon insert

NPTF: national pipe thread fine

PFH: phillips flat head

PPH: phillips pan head

PPHTF: phillips pan head thread forming

PRH: phillips round head

PTH: phillips truss head

PTO: power-take-off

RH: right hand

ROPS: roll-over protection system

RRB: rear roller brush

SFH: slotted fillister head

SHH: slotted hex head

SHWH: slotted hex washer head

SPH: slotted pan head

SQH: square head

SRH: slotted round head

STD: standard

TAP: self tapping

TTH: torx truss head

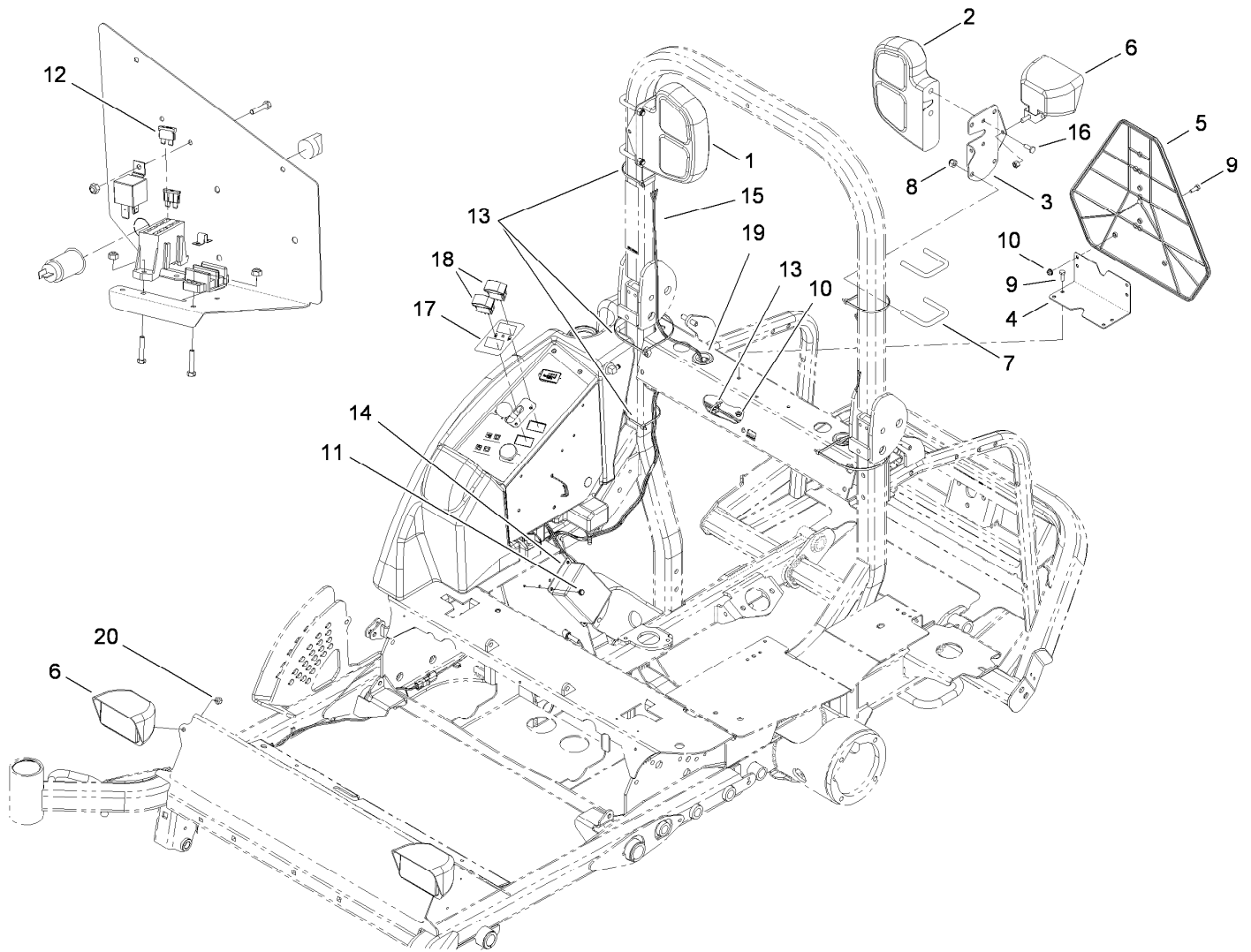
Contents

Road Light Kit Assembly 4

Tail Light Assembly No. 108-8008 5

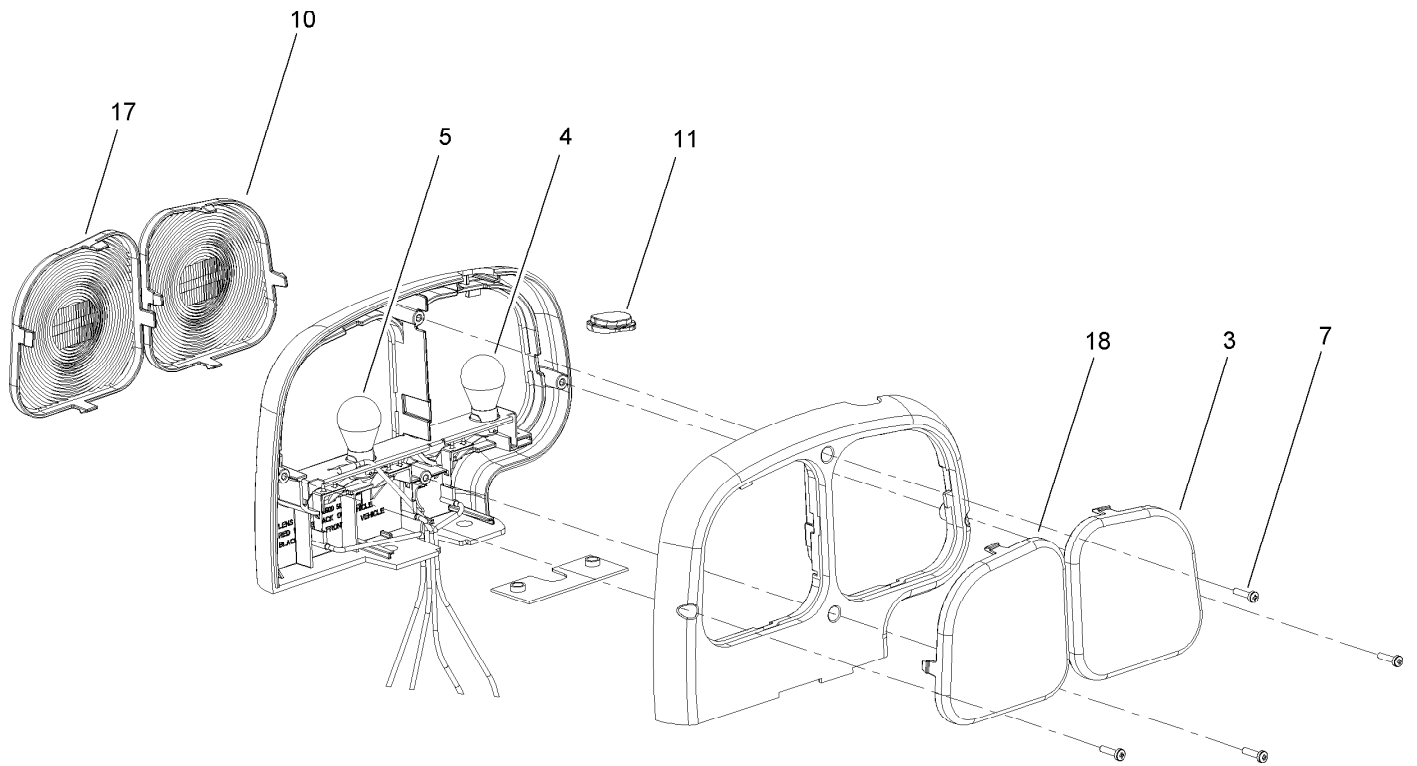
Tail Light Assembly No. 108-8007 6

Worklight Assembly No. 93-3914 7



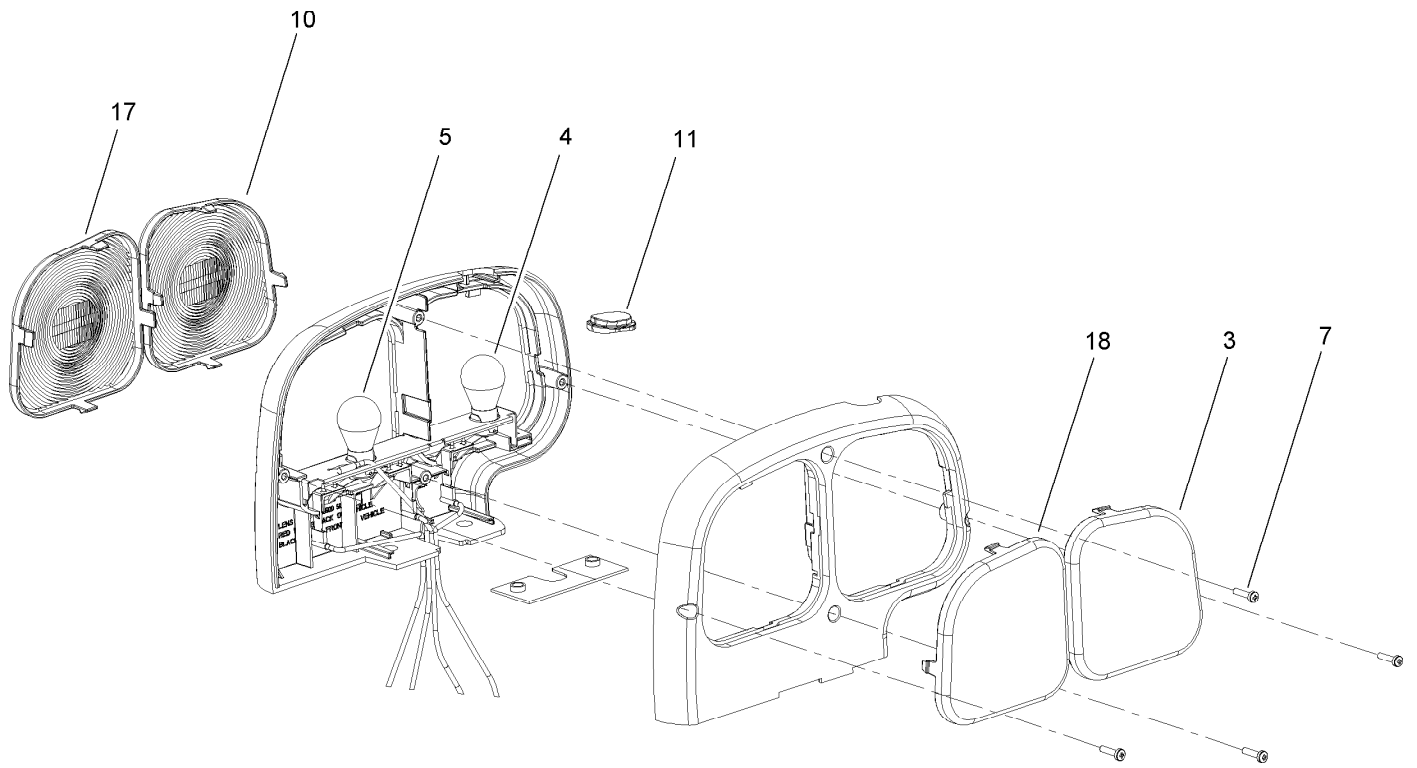
Road Light Kit Assembly

Ref.	Part Number	Qty.	Description	Ref.	Part Number	Qty.	Description
1	108-8008	1	Tail Light Flasher ASM	11	32104-76	2	Screw
2	108-8007	1	Tail Light Flasher ASM	12	109355	1	Fuse-Blade, 15 Amp
3	110-6402-03	2	Bracket-Light	13	3290-379	7	Tie-Cable
4	114-4051	1	Bracket-Smv	14	105-4515	1	Flasher-Rate, Dual
5	92-7760	1	Emblem-Vehicle, Slow Moving	15	110-1659	1	Harness-Wire, Light Kit
6	93-3914	3	Worklight	16	33114-020	4	Screw-HH
7	110-6405	4	U-Bolt	17	110-8269	1	Decal-Light Kit
8	3296-39	8	Nut-Lock, NI	18	100-8590	2	Switch-Rocker, Dpdt (On-Off-On)
9	321-4	4	Screw-HH	19	240-3	2	Grommet-Rubber
10	104-7201	4	Nut-HF	20	3296-29	3	Nut-Lock, NI



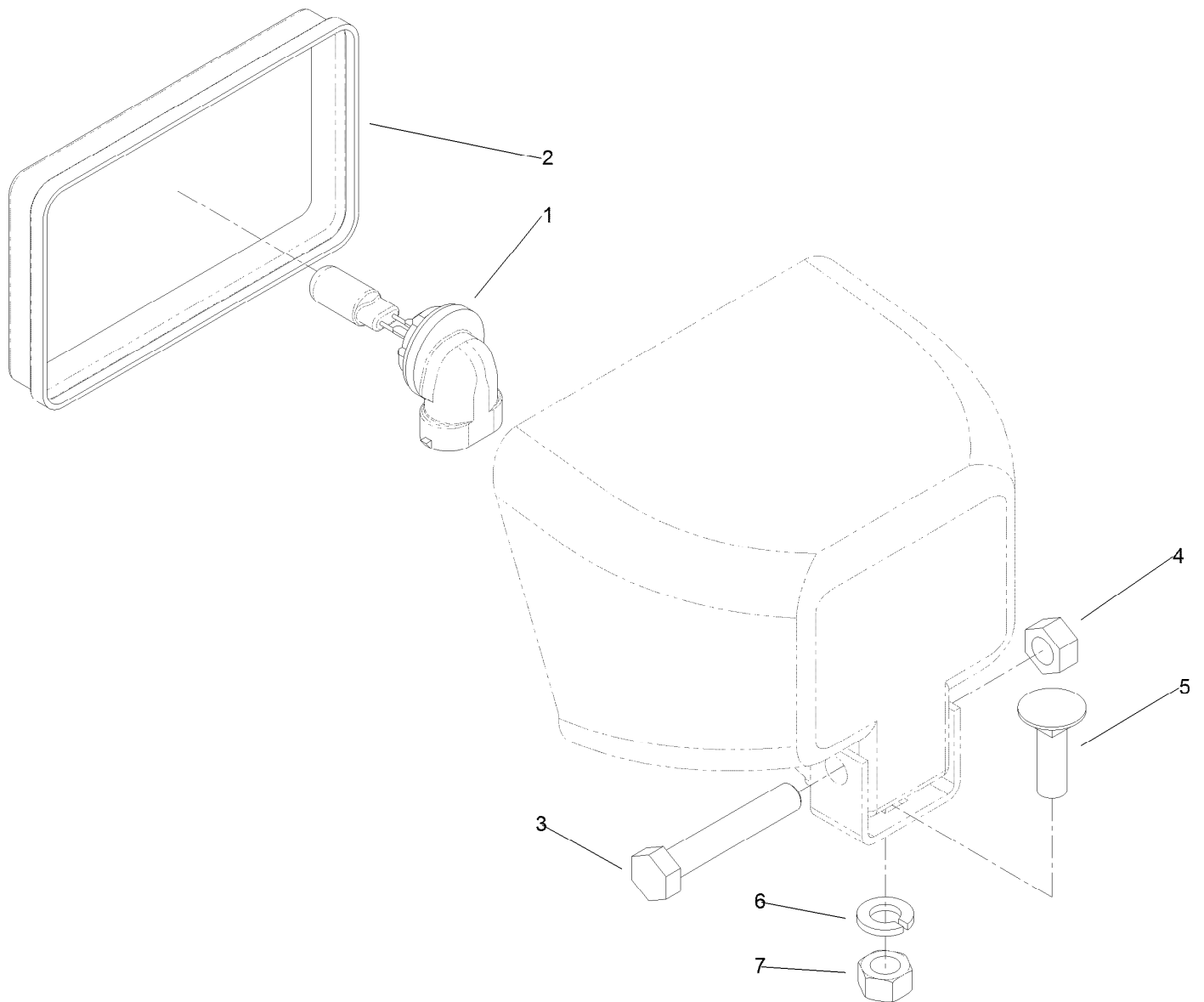
Tail Light Assembly No. 108-8008

Ref.	Part Number	Qty.	Description
3	108-8056	1	Lens-Amber, Base
4	7228	1	Bulb
5	108-8054	1	Bulb
7	108-8053	4	Screw
10	108-8057	1	Lens-Amber, Cover
11	108-8055	1	Lens-Amber, Window
17	108-8061	1	Lens-Red, Cover
18	108-8058	1	Lens-Black, Base



Tail Light Assembly No. 108-8007

Ref.	Part Number	Qty.	Description
3	108-8056	1	Lens-Amber, Base
4	7228	1	Bulb
5	108-8054	1	Bulb
7	108-8053	4	Screw
10	108-8057	1	Lens-Amber, Cover
11	108-8055	1	Lens-Amber, Window
17	108-8060	1	Lens-Red, Base
18	108-8059	1	Lens-Black, Cover



Worklight Assembly No. 93-3914

Ref.	Part Number	Qty.	Description
1	95-0909	1	Lamp-12 Volt
2	92-2893	1	Lens-Clear
3	322-21	1	Screw-HH
4	32152-1	1	Nut-Lock, Cone
5	3230-28	1	Screw-CARR
6	3253-4	1	Washer-Lock
7	3217-6	1	Nut-Hex



Count on it.