



Power Max 1128OXE Snowthrower

Model No. 38651 - 280000001 and up.

Parts Catalog

Ordering Replacement Parts

To order replacement parts, please supply the part number, the quantity, and the description of each part desired.

Understanding Reference Numbers

Each identified part in an illustration has a reference number. The reference number for a part also appears in the parts list, along with other information about the part.

This catalog uses two special reference number formats, one to indicate parts in a service assembly and another to indicate the quantity of a given part in an illustration.

Service Assembly Reference Numbers

Parts in service assemblies have reference numbers in the form a:b. The a represents the reference number of the entire service assembly and the b represents a sequential number unique to each part within the service assembly.

For example, a wheel assembly might be identified by reference number 6, the tire by 6:1, the valve by 6:2, and the wheel by 6:3. When you order the assembly identified by reference number 6, you receive all parts identified by reference numbers 6:1, 6:2, and 6:3. However, you may also order any part individually. Reference numbers of this type appear in illustrations and in part lists.

Reference Numbers Indicating Quantity

In an illustration, if a reference number indicates more than one part, the reference number has the form nX y. The n represents the quantity of the part, the X is the multiplication symbol, and the y represents the reference number.

For example, in an illustration, the reference number 2X 37 means that two of the parts identified by reference number 37 are indicated.

Contents

Description	Page	Description	Page
Auger and Housing Assembly 3	Engine Assembly No. 1 Tecumseh OH318SA-221847B 14
28 Inch Auger Gearcase Assembly No. 108-7329 4	Engine Assembly No. 2 Tecumseh OH318SA-221847B 16
Chute Assembly 5	Carburetor Assembly No. 640169 Tecumseh OH318SA-221847B 18
Frame Assembly 6	Rewind Starter No. 590749 Tecumseh OH318SA-221847B 19
Handle and Control Assembly 8	Electric Starter Assembly No. 37102 Tecumseh OH318SA-221847B 20
Handle Assembly 9	Attachments and Accessories List 21
Lever Chute Control Assembly 10		
Engine Assembly 11		
Wheel Clutch Assembly 12		
Wheel Clutch Sprocket Assembly 13		

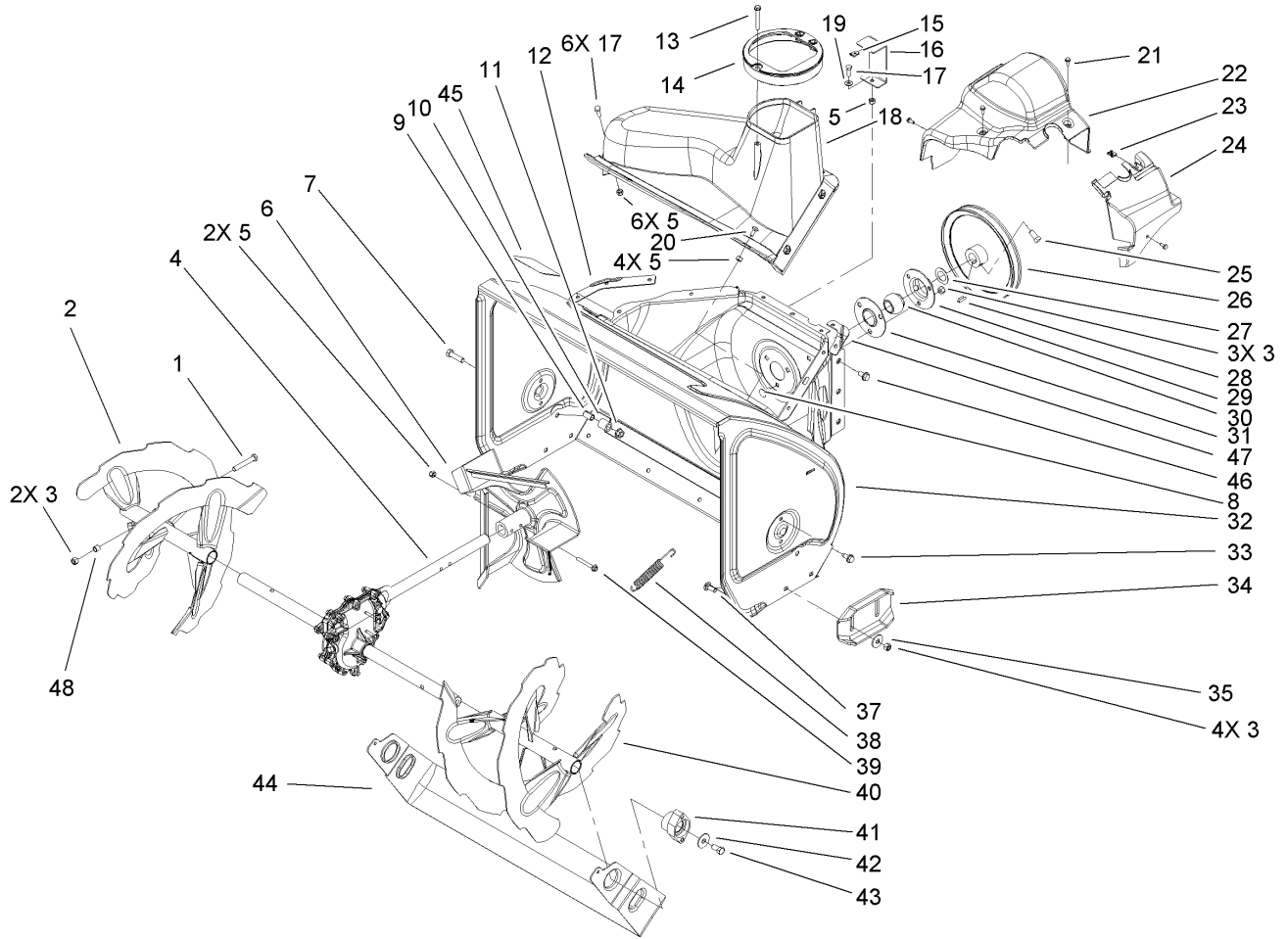
Part Description Abbreviations

Part descriptions in this catalog may include the following abbreviations.

AR. as required	HYD. hydraulic
ASM. assembly	LH. left hand
BBC. blade brake clutch	NI. nylon insert
CARR. carriage	NPTF. national pipe thread fine
DEG. degrees	PFH. phillips flat head
EXT. external	PPH. phillips pan head
FH. flat head	PPHTF. phillips pan head thread forming
GA. gauge	PRH. phillips round head
HD. heavy-duty	PTH. phillips truss head
HF. hex flange	PTO. power-take-off
HH. hex head	RH. right hand
HHF. hex head flange	ROPS. roll-over protection system
HHFTF. hex head flange thread forming	SFH. slotted fillister head
HJ. hex jam	SHH. slotted hex head
HLH. hex lag head	SHWH. slotted hex washer head
HOC. height-of-cut	SPH. slotted pan head
HSBH. hex socket button head	SQH. square head
HSFH. hex socket flat head	SRH. slotted round head
HSH. hex socket head	STD. standard
HWH. hex washer head	TAP. self tapping
HWHTF. hex washer head thread forming	TTH. torx truss head

Footnotes

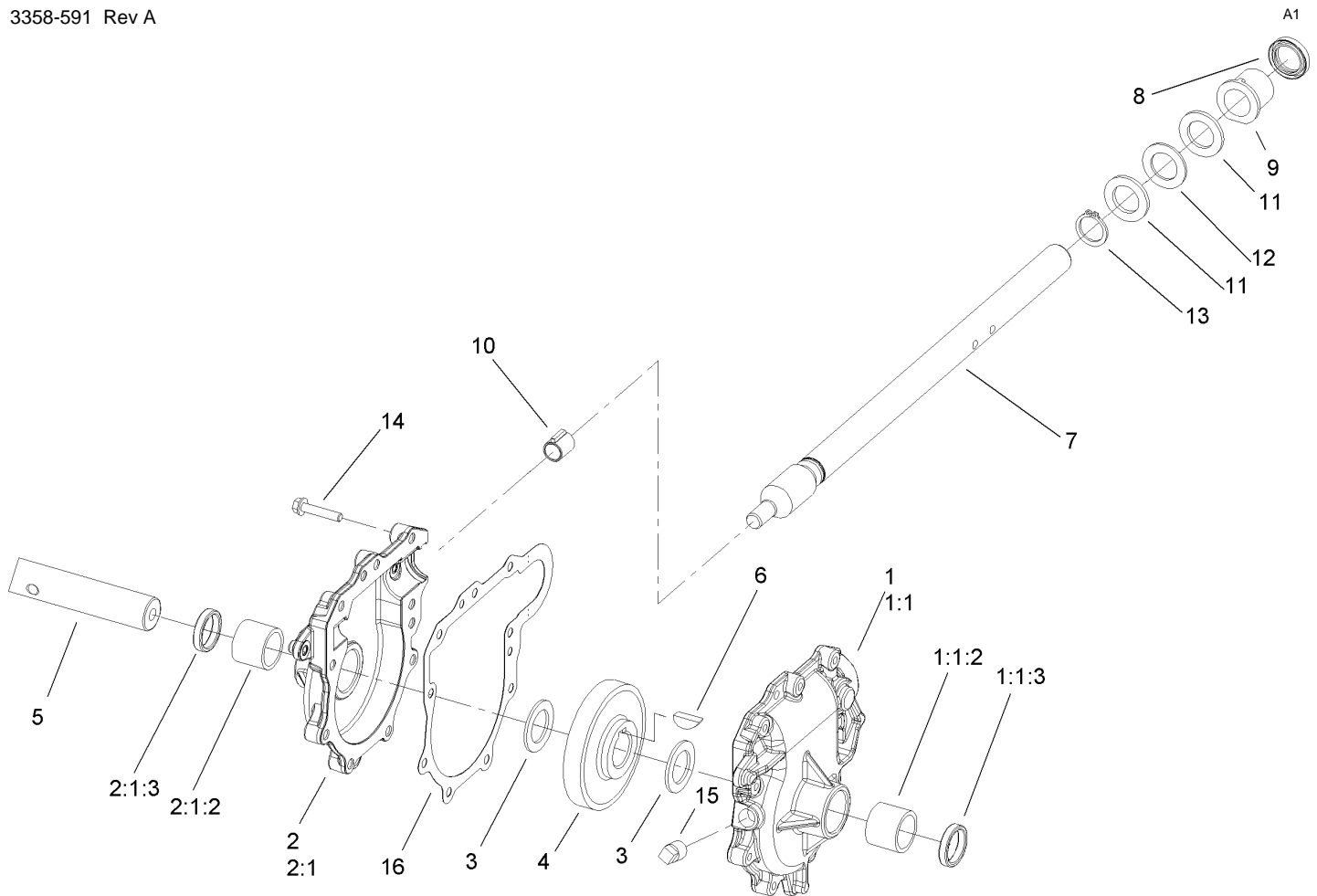
- ❶ Not illustrated
- ❷ Not serviced separately
- ❸ Obtain from your local Tecumseh dealer



Auger and Housing Assembly

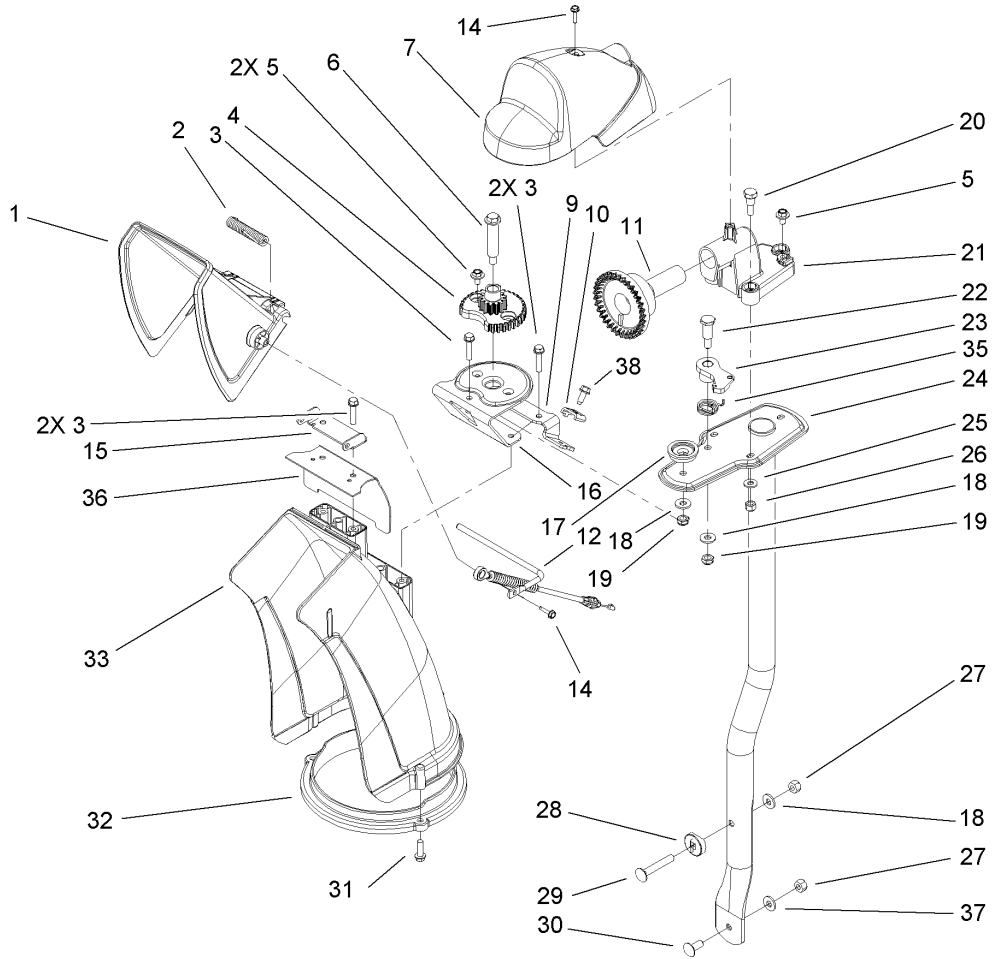
Ref	Part No.	Qty.	Description
1	322-11	2	Screw-HH
2	106-7291-03	1	Auger-RH
3	3296-29	9	Nut-Lock, NI
4	108-7329	1	28 Inch Auger Gearcase ASM
5	3296-42	13	Nut-Lock, NI
6	106-4576-03	1	Impeller ASM
7	323-29	2	Screw-HH
8	3230-23	3	Screw-CARR
9	106-4501	2	Spacer-Scraper, Stop
10	106-7318	2	Cushion-Scraper, Stop
11	32128-21	2	Nut-HF
12	107-1017-03	1	Seal-Flange, Cover
13	107-3003	1	Screw-Plastite
14	107-3006	1	Guide-Chute
15	107-1013	1	Nut-Speed, U-Type
16	107-1014-03	1	Bracket-Cover, Clip Nut
17	321-4	7	Screw-HH
18	108-0017	1	Cover
19	3256-22	1	Washer-Flat
20	3229-1	4	Screw-CARR
21	32144-112	4	Screw-HWH
22	107-1001	1	Cover-Belt
23	701493	1	Nut-Speed
24	107-1016	1	Cover-Extension, Belt

Ref	Part No.	Qty.	Description
25	3242-4	2	Screw-Set, SQH
26	62-1300	1	Pulley-Impeller
27	252-80	1	Washer-Thrust
28	3257-23	1	Key-Woodruff
29	26-6110	1	Flange-Cup, Bearing
30	63-3450	1	Bearing-Ball
31	26-6120	1	Flange-Cup, Bearing
32	107-3824	1	Housing- Auger, 28 Inch
33	32144-70	4	Screw-HWHTF
34	106-4588-01	2	Skid
35	52-2861	4	Washer
37	3230-16	4	Screw-CARR
38	106-4502	2	Spring-Scraper
39	321-44	2	Screw-HHF
40	106-7301-03	1	LH Auger ASM
41	106-4570	2	Auger-Bearing
42	3-0750	2	Washer
43	323-4	2	Screw-HH
44	106-4590-01	1	Scraper-28 Inch, Pivoting
45	107-3040	1	Decal-Danger, Auger
46	32144-14	6	Screw-HWHTF
47	108-0039-03	1	Seal
48	1-633545	2	Spacer



28 Inch Auger Gearcase Assembly No. 108-7329

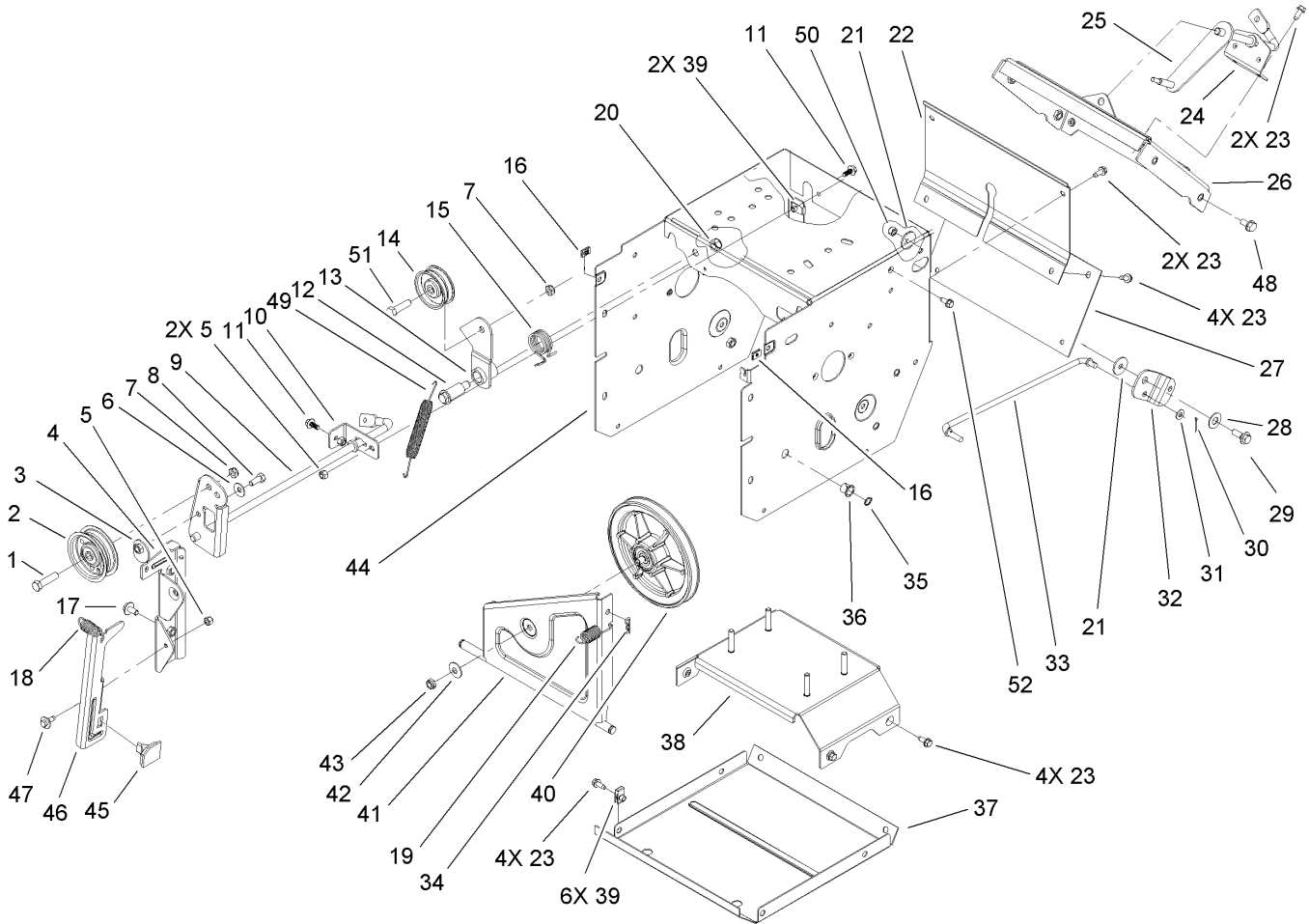
Ref	Part No.	Qty.	Description
1	108-7325	1	LH Auger Gearcase ASM
②1:1		1	Gearcase-Auger, LH
1:1:2	112-6635	1	Bushing-Sleeve
1:1:3	7-0045	1	Seal-Oil
2	108-7327	1	RH Auger Gearcase ASM
②2:1		1	Gearcase-Auger, RH
2:1:2	112-6635	1	Bushing-Sleeve
2:1:3	7-0045	1	Seal-Oil
3	252-71	2	Washer-Thrust
4	62-0120	1	Gear-Helical
5	106-4421	1	Shaft-Auger
6	3257-10	1	Key-Woodruff
7	66-7811	1	Shaft-Impeller
8	253-149	1	Seal-Oil
9	37-6560	1	Bushing-Input
10	62-1150	1	Bushing-Worm
11	252-78	2	Bearing-Thrust
12	252-76	1	Bearing-Thrust
13	32151-33	1	Ring-Retaining, EXT
14	108-4862	9	Screw-HWHTF
15	281-1	1	Plug-Pipe, SQH
16	108-7330	1	Gasket-Gearcase, Auger



Chute Assembly

Ref	Part No.	Qty.	Description
1	112-6629	1	Deflector-Chute, Ce
2	106-4594	1	Spring-Torsion
3	46-8092	5	Screw-Plastite
4	106-4472	1	Gear-Chute
5	46-6810	3	Screw And Washer ASM
6	100-9880	1	Bolt-Shoulder
7	106-4585	1	Cover-Gear, Chute
9	106-7296	1	Bracket-Cable, Clamp
10	106-7297	1	Clamp-Cable
11	106-4471	1	Gear-Face
12	107-1021	1	Rod-Deflector
14	98-1375	2	Screw-HWH
15	106-7266	1	Bracket-Deflector
16	106-4582-03	1	Bracket-Support, Chute
17	106-4422	1	Spacer-Chute
18	3256-2	3	Washer-Flat
19	3296-47	2	Nut-Lock, NI
20	106-7276	3	Screw-Shoulder
21	106-7257	1	Mount-Gear, Face
22	63-2650	1	Screw-Shoulder
23	106-4476	1	Latch-Chute
24	106-7253-03	1	Tube-Support
25	3256-22	3	Washer-Flat
26	3296-42	3	Nut-Lock, NI

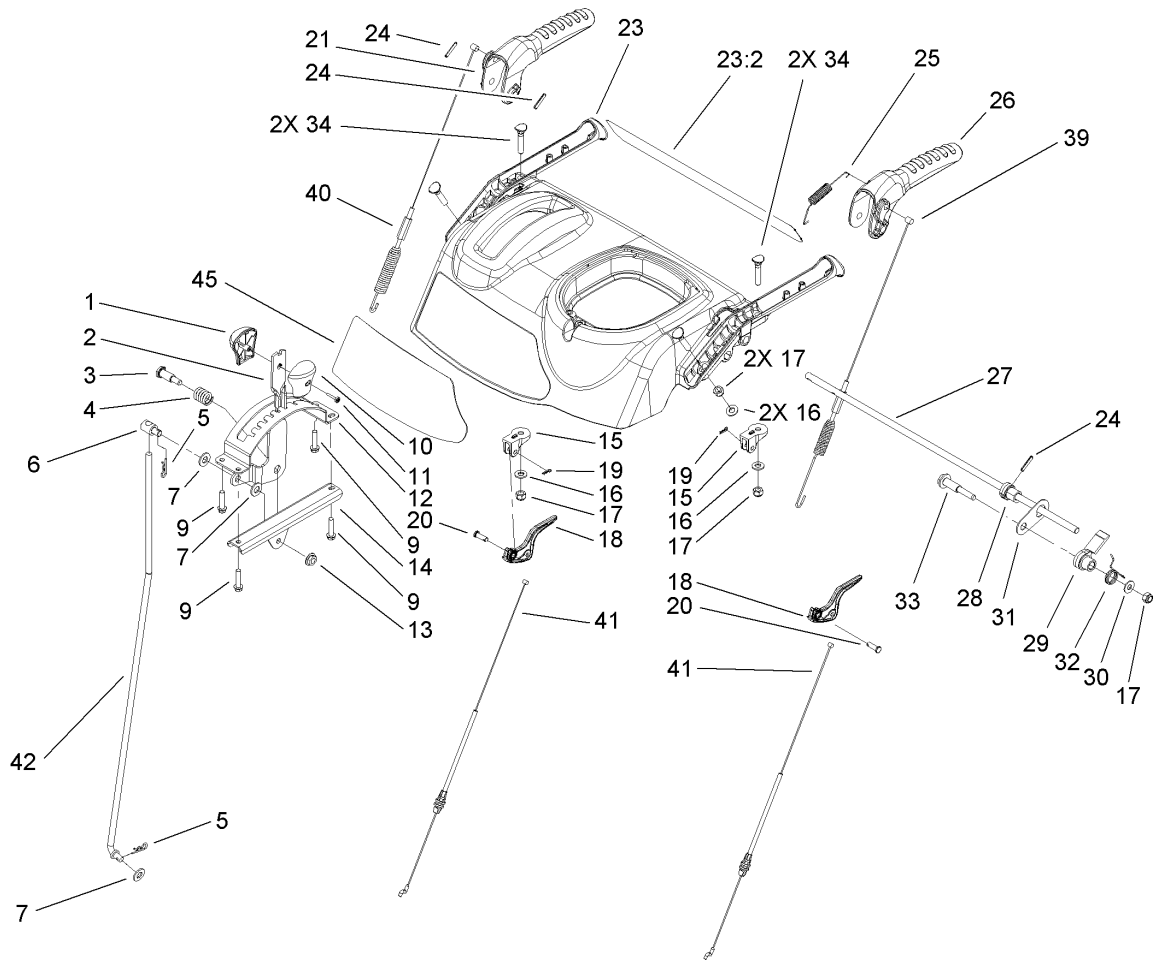
Ref	Part No.	Qty.	Description
27	3296-29	2	Nut-Lock, NI
28	106-7260	1	Washer-Curved
29	3230-5	1	Screw-CARR
30	3230-23	1	Screw-CARR
31	46-8091	3	Screw-HWH
32	105-9991	1	Ring-Chute
33	106-4440	1	Chute-Discharge
35	108-7315	1	Spring-Torsion
36	108-5052	1	Seal-Chute
37	3290-456	1	Washer-Belleville
38	32144-10	1	Screw-HWH



Frame Assembly

Ref	Part No.	Qty.	Description
1	323-8	1	Screw-HH
2	92-7104	1	Pulley-Idler
3	107-1047	1	Nut
4	107-1039	1	Bracket-Idler, Impeller
5	3296-42	3	Nut-Lock, NI
6	3290-456	1	Washer-Belleville
7	3296-59	2	Nut-Lock, NI
8	322-3	1	Screw-HH
9	107-3838-03	1	Impeller Clutch ASM
10	106-7341	1	Bracket-Rear, Clutch
11	99-6810	2	Screw-HH
12	108-5056	1	Bolt-Shoulder
13	108-5058	1	Arm-Idler, Traction
14	3-4244	1	Pulley-Idler
15	108-7332	1	Spring-Torsion
16	107-1013	2	Nut-Speed, U-Type
17	3234-7	2	Screw-HHF
18	107-3829	1	Spring-Extension
19	107-1003	1	Spring-Extension
20	3296-76	1	Nut-Lock, NI
21	5-4460	2	Washer-Pivot
22	108-0022-01	1	Cover-Upper
23	32144-10	16	Screw-HWH
24	108-0036	1	Bracket-Rod, Shift

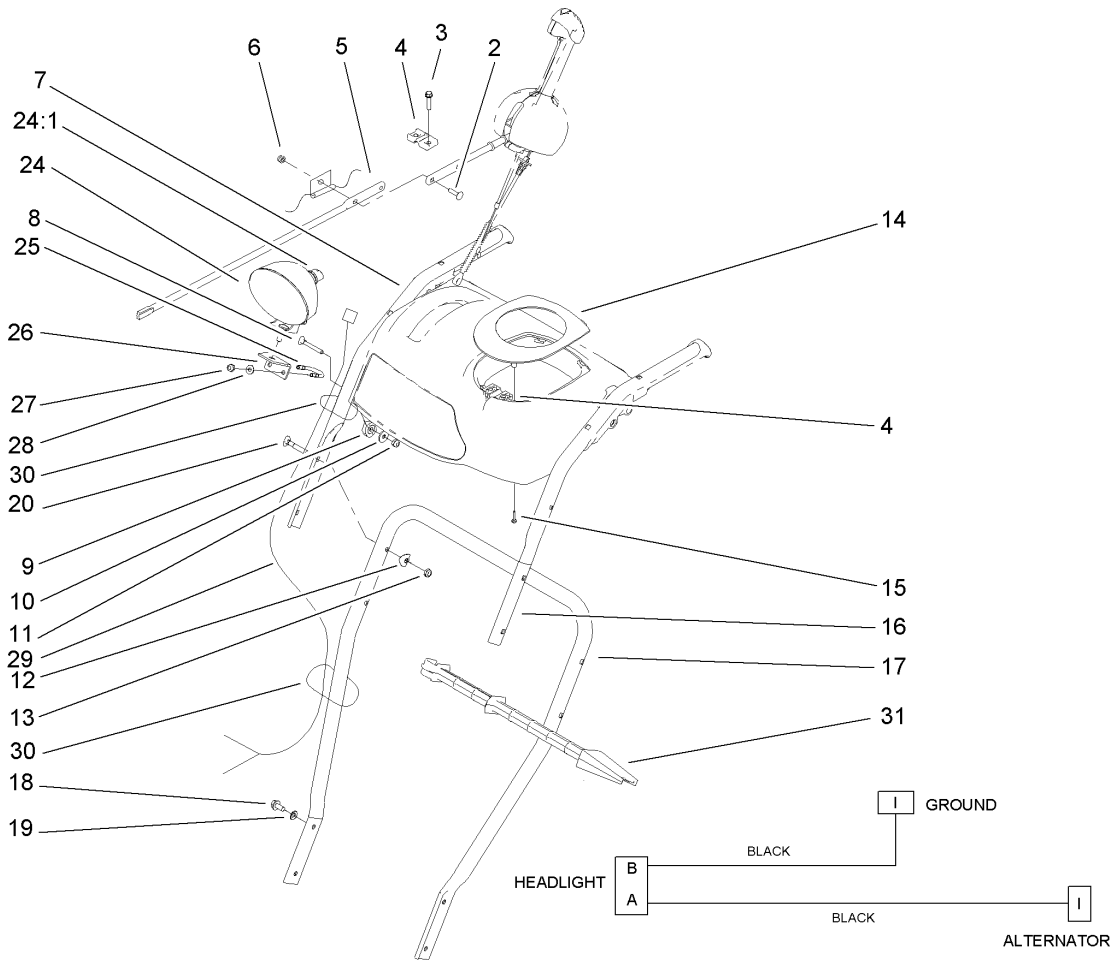
Ref	Part No.	Qty.	Description
25	106-7268	1	Lever-Control, Traction
26	108-0026-01	1	Shift Plate ASM
27	106-7345-01	1	Cover-Lower
28	25-5640	1	Washer
29	27-0410	1	Screw-Shoulder
30	3272-4	1	Pin-Cotter
31	3256-23	1	Washer-Flat
32	107-1011	1	Bellcrank-Drive
33	106-4467	1	Link-Control, Speed
34	3290-307	1	Pin-Hair
35	32151-61	2	Ring-Retaining
36	256-257	2	Bushing-Nyliner
37	106-7330-01	1	Pan-Bottom
38	106-7315	1	Brace Frame ASM
39	107069	8	Clip
40	108-0031	1	Traction Pulley ASM
41	108-7307	1	Friction Wheel Bracket ASM
42	3290-340	1	Washer-Belleville
43	3296-5	1	Nut-Lock
44	114-9259-01	1	Traction Frame ASM
45	66-8060	1	Pad-Brake
46	107-1000	1	Arm-Brake
47	92-9698	1	Screw-Shoulder
48	32144-14	4	Screw-HWHTF



Handle and Control Assembly

Ref	Part No.	Qty.	Description
1	106-4423	1	Knob-Shift, RH
2	106-7278-03	1	Selector-Speed
3	63-2650	1	Screw-Shoulder
4	108-7313	1	Spring-Compression
5	3290-307	2	Pin-Hair
6	110-3446	1	Trunion-Rod
7	3256-24	3	Washer-Flat
9	46-8092	4	Screw-Plastite
10	105-9999	1	Knob-Shift, LH
11	94-4496	1	Screw-PPH
12	106-7277-03	1	Guide-Selector, Speed
13	32128-13	1	Nut-HF
14	106-7279-03	1	Mount-Selector, Speed
15	105-9980	2	Mount-Clutch, Lever
16	3256-70	4	Washer-Flat
17	3296-72	5	Nut-Lock, NI
18	106-4505	2	Lever-Clutch
19	108-2992	2	Pin-Hair
20	1-808265	2	Pin-Clevis
21	106-4413	1	Lever-Auger
23	112-6633	1	Panel-Control
23:2	112-6627	1	Decal-Back, Control Panel
24	32121-125	3	Pin-Spring
25	107-3001	1	Spring-Tension

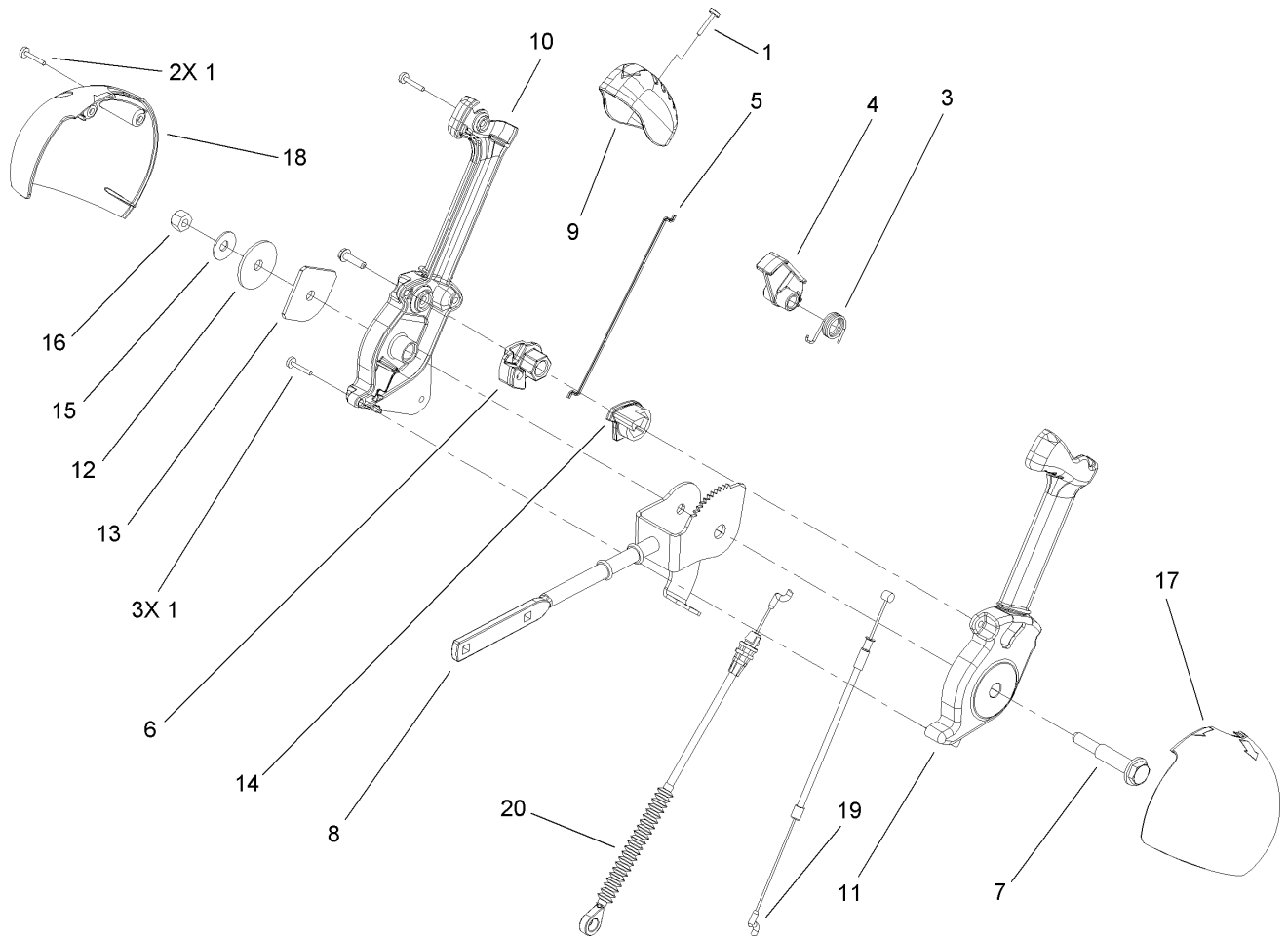
Ref	Part No.	Qty.	Description
26	106-4410	1	Lever-Traction
27	105-9996	1	Rod-Lockout
28	107-1043	1	Cam-Lockout
29	108-0023	1	Latch-Lockout
30	98-3499	1	Washer-Flat
31	107-3000	1	Link-Lockout
32	108-0024	1	Spring-Torsion
33	106-4412	1	Screw-Shoulder
34	107-3018	4	Screw-Handle
39	106-4563	1	Cable-Traction
40	107-3830	1	Cable-Auger
41	107-8896	2	Cable-Clutch
42	107-1005	1	Rod-Shift
45	112-8126	1	Decal-Control Panel



Handle Assembly

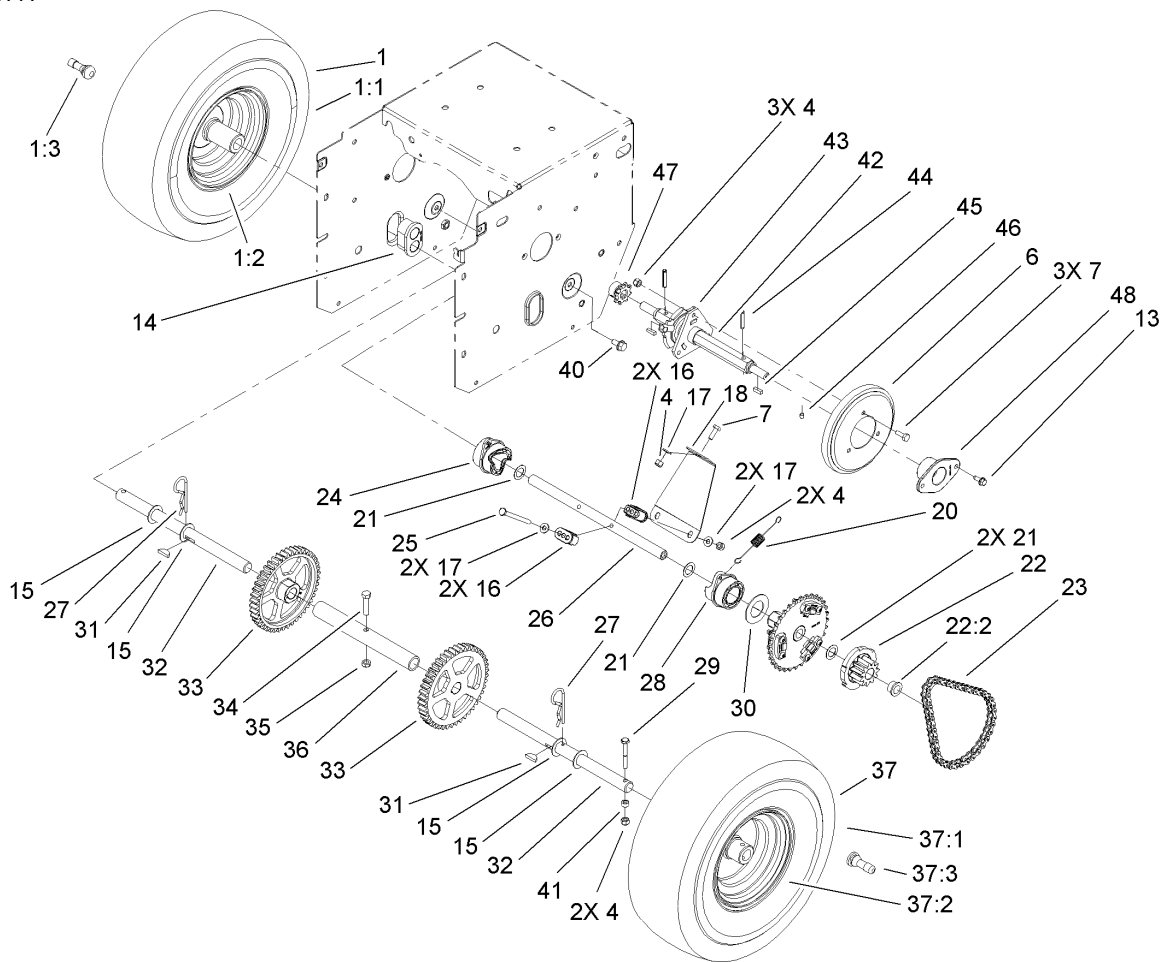
Ref	Part No.	Qty.	Description
2	3229-30	2	Screw-CARR
3	46-8092	2	Screw-Plastite
4	105-9987	2	Support-Rod
5	106-7283	1	Rod-Chute, Front
6	3296-73	2	Nut-Lock, NI
7	108-0038-03	1	Handle-Upper, RH
8	95-4453	2	Screw
9	106-4509	2	Clamp-Cable
10	87-6630	2	Washer-Plain
11	3296-73	2	Nut-Lock, NI
12	107-3844	4	Washer
13	3296-72	4	Nut-Lock, NI
14	106-4586	1	Cover-Panel, Control
15	94-4496	2	Screw-PPH
16	108-0037-03	1	Handle-Upper, LH
17	105-9981-03	1	Handle-Lower
18	32144-14	4	Screw-HWHTF
19	3290-475	4	Washer-Belleville
20	92-2260	4	Screw-Handle
24	106-4510	1	Headlamp ASM
24:1	108-0008	1	Lamp-12 Volt
25	107-3024	1	Clamp-Light
26	107-1020-03	1	Bracket-Light
27	3296-73	2	Nut-Lock, NI

Ref	Part No.	Qty.	Description
28	3256-1	2	Washer-Flat
29	106-4511	1	Harness-Wire
30	614249	2	Strap-Tie
31	110-3408	1	Stick-Cleanout



Lever Chute Control Assembly

Ref	Part No.	Qty.	Description
1	94-4496	6	Screw-PPH
3	105-9982	1	Spring-Torsion
4	105-9984	1	Trigger-Latch
5	105-9985	1	Link-Latch
6	105-9988	1	Lever-Cable, Deflector
7	105-9995	1	Screw-Shoulder
8	106-4479	1	Rod-Control, Chute
9	106-7280	1	Cap-Lever
10	106-7281	1	Lever-Chute Control, RH
11	106-7282	1	Lever-Chute Control, LH
12	107-3002	1	Washer-Nylon
13	106-7295	1	Plate-Friction
14	106-7310	1	Pawl-Latch
15	3290-456	1	Washer-Belleville
16	3296-29	1	Nut-Lock, NI
17	105-9986	1	Cover-Chute Lever, LH
18	106-7292	1	Cover-Chute Lever, RH
19	105-9989	1	Cable-Release, Chute
20	105-9990	1	Cable-Control, Deflector



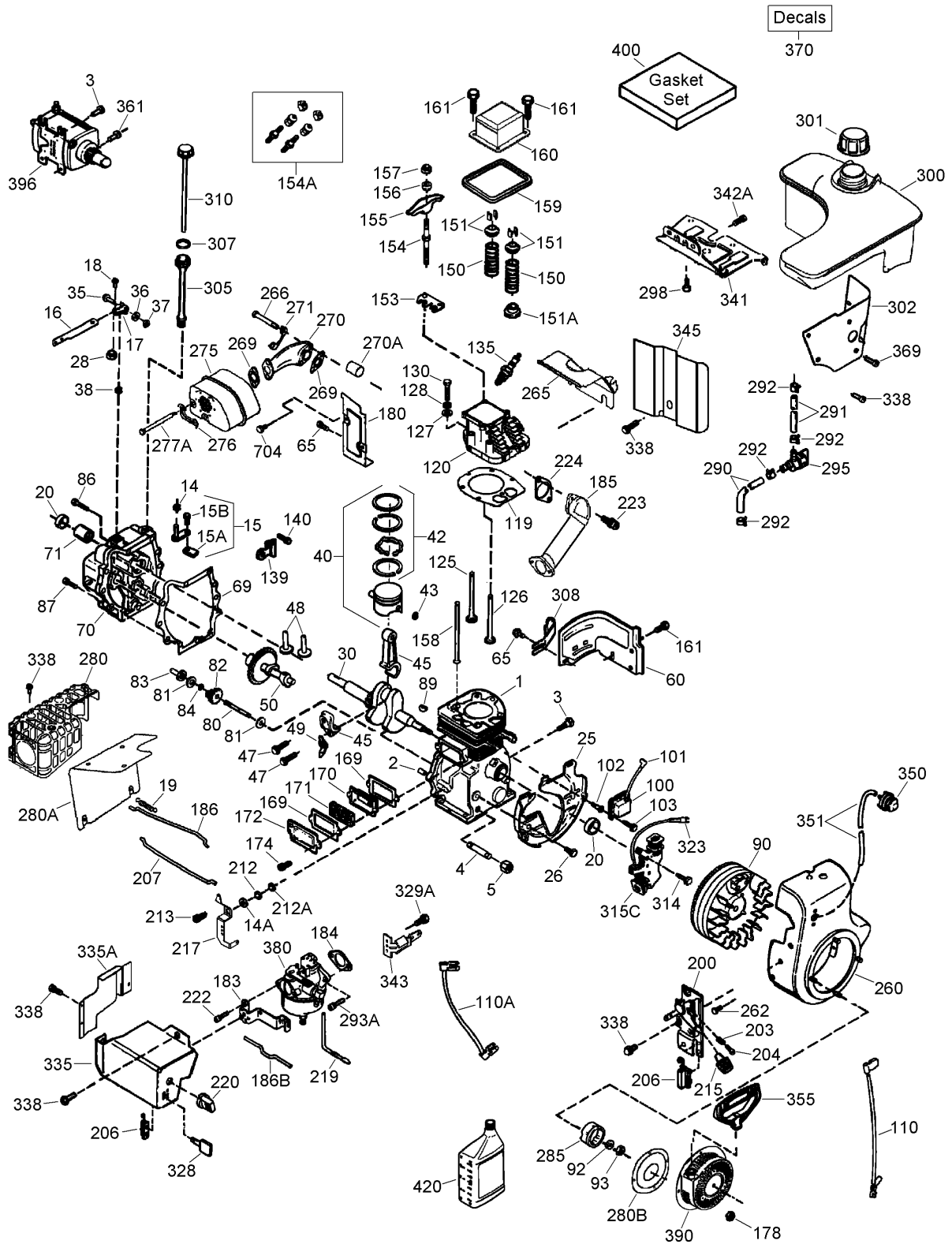
Wheel Clutch Assembly

Ref	Part No.	Qty.	Description
①		1	RH Wheel And Tire ASM
1:1	107-3042	1	Tire
1:2	107-3043	1	Rim-Tire
1:3	232-27	1	Stem-Valve
4	3296-42	8	Nut-Lock, NI
6	106-4480	1	Wheel-Friction
7	321-4	4	Screw-HH
13	32144-10	4	Screw-HWH
14	106-4558	2	Bearing-Axle
15	3-8664	4	Washer-Thrust
16	107-8889	4	Guide-Collar
17	3256-22	5	Washer-Flat
18	107-8892-03	1	Brace-Collar, Shift
20	107-8893	2	Spring-Extension
21	108-0015	4	Washer-Flat
22	107-8894	2	11T Gear ASM
22:2	108-2973	2	Bushing-Flange
23	108-0016	2	Chain-Roller
23	2710-6	2	Link-Connecting
24	107-8888	1	Collar-Shift, RH
25	321-23	2	Screw-HH
26	107-8883	1	Shaft-Intermediate
27	3290-343	2	Pin-Hair
28	107-8887	1	Collar-Shift, LH

Ref	Part No.	Qty.	Description
29	108-2975	2	Screw-HH
30	107-8891	2	Washer-Thrust
31	3257-7	2	Key-Woodruff
32	107-8898	2	Shaft-Axle
33	106-4572	2	Gear-Axle, 44 Tooth
34	322-17	1	Screw-HH
35	3296-47	1	Nut-Lock, NI
36	106-7259	1	Tube-Axle
③		1	LH Wheel And Tire ASM
37:1	107-3042	1	Tire
37:2	107-3043	1	Rim-Tire
37:3	232-27	1	Stem-Valve
40	32144-14	2	Screw-HWH
41	55-9370	2	Spacer-Blade, Rotor
42	108-7314	1	Shaft-Hex
43	106-4434	1	Trunion-Hex
44	32121-9	2	Pin-Roll, Slotted
45	94-8850	2	Key-Square
46	3245-32	4	Screw-HSH
47	106-7317	2	Sprocket-8 Tooth
48	108-7319	2	Retainer-Bearing

Engine Assembly No. 1

Tecumseh OH318SA-221847B



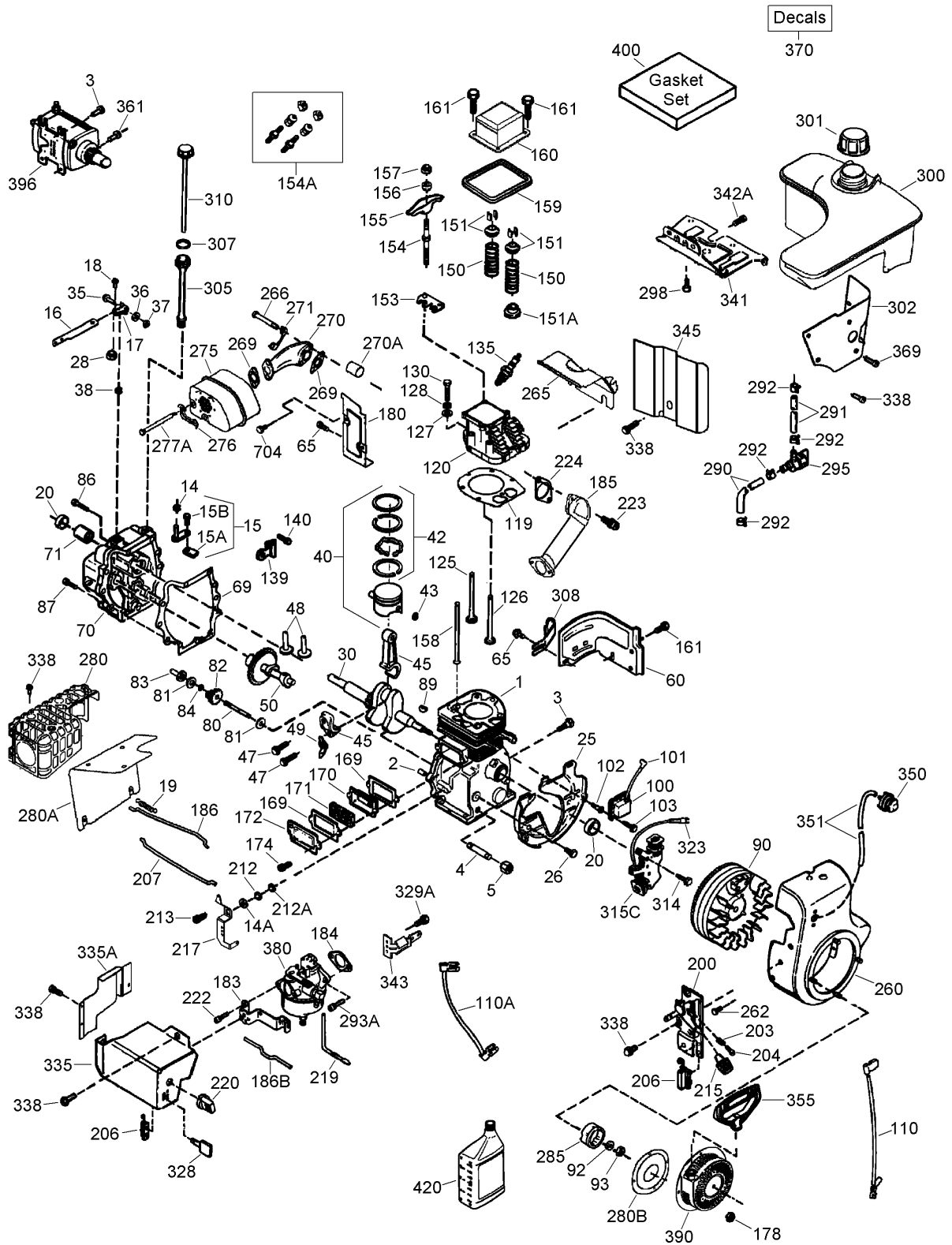
Engine Assembly No. 1

Tecumseh OH318SA-221847B

Ref	Part No.	Qty.	Description	Ref	Part No.	Qty.	Description
①	37251	1	Cylinder (3-1/8 Bore) (Includes 2, 20)	⑨0	611093	1	Flywheel ASM (3 Amp With Ring Gear)
②	27652	2	Pin-Dowel	⑨2	650880	1	Washer-Belleville
③	650820	2	Screw-Shoulder (1/4-20 X 1/2) (Upper Mounting Screws)	⑨3	650881	1	Nut-Flywheel (5/8-18)
④	34171	1	Extension-Drain, Oil (5-1/2 Inch) (1/4-18 Npt)	⑩00	35135A	1	Ignition-Solid State (Includes 101)
⑤	30969	1	Cap-Extension (1/4-18 Npt)	⑩01	610118	1	Cover-Spark Plug
⑭	28277	1	Washer-Flat	⑩02	651024	2	Stud-Mounting, Solid State
⑭A	651057	1	Washer	⑩03	651007	2	Screw (T-15, 10-24 X 15/16)
⑮	30699C	1	Rod-Governor	⑩10	35187	1	Wire-Ground (13.65 Lg)
⑮A	30700	1	Yoke-Governor	⑩10A	37047	1	Wire-Ground (10.50 Lg)
⑮B	650494	1	Screw (6-40X5/16)	⑩19	37256	1	Gasket-Head, Cylinder
⑯	37255A	1	Lever-Governor	⑩20	37516	1	Head-Cylinder (Includes 151A, 270A)
⑰	29916	1	Clamp-Lever, Governor	⑩25	36934	1	Valve-Exhaust (STD)
⑱	651028	1	Screw (T-15, 8-32X7/16)	⑩26	36935	1	Valve-Intake (STD)
⑲	36281	1	Spring-Extension (Governor)	⑩26	36937	1	Intake Valve (1/32)
⑳	35319	2	Seal-Oil	⑩27	650691	6	Washer-Flat
㉕	37853	1	Baffle-Housing, Blower	⑩28	650690	6	Washer-Belleville
㉖	650561	3	Screw (1/4-20X19/32)	⑩30	650697A	6	Screw (5/16-18 X 2-1/2)
㉘	30322	1	Nut-Lock (8-32)	⑩35	34645	1	Spark Plug-Resistor (R N 4C)
㉚	37272	1	Crankshaft	⑩39	33369	1	Bracket-Gear, Governor
㉜	29826	1	Screw (10-32X3/4)	⑩40	650836	2	Screw (10-24X1/2)
㉞	29918	1	Washer-Lock (8)	⑩50	33507	2	Spring-Valve
㉟	29216	1	Nut-Lock (10-32)	⑩51	33508	2	Keeper-Spring, Valve
㊱	29642	1	Ring-Retaining	⑩51A	35862	1	Cap-Spring, Valve
㊳	40049	1	Piston, Pin And Ring Set (STD) (Includes 41, 42, 43)	⑩53	35949	1	Guide-Rod, Push
㊴	40050	1	Piston, Pin And Ring Set (.010 O S) (Includes 41, 42, 43)	⑩54	651105	2	Stud-Arm, Rocker
㊶	40013	1	Ring Set (STD)	⑩54A	730636A	1	Rocker Arm Stud And Bearing Kit (Includes 154, 156, 157)
㊶	40014	1	Ring Set (.010 O S)	⑩55	35950	2	Arm-Rocker
㊷	27888	2	Ring-Retaining, Piston Pin	⑩56	37843	2	Bearing-Arm, Rocker
㊸	36897A	1	Connecting Rod ASM (Includes 47, 49)	⑩57	650586	2	Nut-Jam (5/16-24)
㊹	651033A	2	Bolt-Rod, Connecting (1/4-20 X 1-5/16)	⑩58	35466	2	Rod-Push
㊺	35313A	2	Lifter-Valve	⑩59	35952	1	Gasket-Cover, Rocker Arm
㊻	36896	1	Dipper-Oil	⑩60	35953A	1	Cover-Arm, Rocker
㊼	37517	1	Camshaft (Mcr)	⑩61	30063	5	Screw (T-30, 1/4-20X1/2)
㊽	35316A	1	Extension-Housing, Blower	⑩69	27896A	1	Gasket-Cover, Valve
㊾	30200	3	Screw (10-24 X 9/16)	⑩70	28423	1	Body-Breather
㊿	37342	1	Gasket-Cover, Cylinder	⑩71	28424	1	Element-Breather
1	37847	1	Cover, Cylinder (Includes 20, 71, 80-84)	⑩72	38014	1	Cover-Valve
2	35377	1	Bushing-Crankshaft	⑩74	650128	1	Screw (10-24X1/2)
3	37587	1	Shaft-Governor				
4	651080	1	Washer				
5	37588	1	Governor Gear ASM (Includes 81)				
6	30588A	1	Spool-Governor				
7	29193	1	Ring-Retaining				
8	650833	7	Screw (1/4-20X1-3/16)				
9	650832	1	Screw (1/4-20X1-11/16)				
10	32589	1	Key-Flywheel				

Engine Assembly No. 2

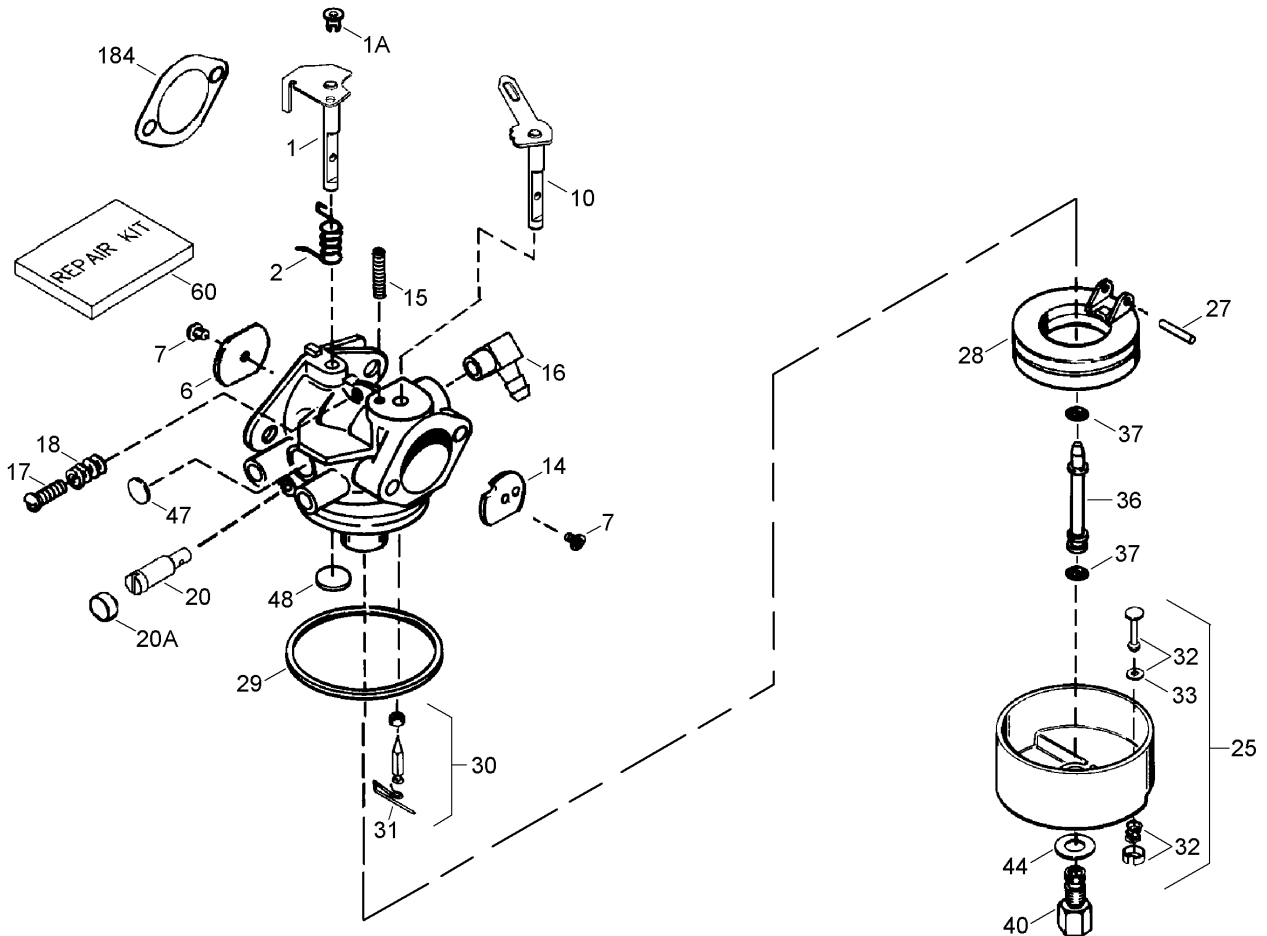
Tecumseh OH318SA-221847B



Engine Assembly No. 2

Tecumseh OH318SA-221847B

Ref	Part No.	Qty.	Description	Ref	Part No.	Qty.	Description
③178	29752	4	Nut And Lock Washer (1/4-28)	③310	35700	1	Dipstick
③180	37101	1	Extension-Housing, Blower	③314	650873	1	Screw (1/4-20 X 3/4)
③183	34583A	1	Bracket-Choke	③315C	611111	1	Coil-Alternator, 18 Watt
③184	33263	1	Gasket-Carburetor To Intake Pipe	③323	611118	1	Terminal (Single Pin)
③185	37085	1	Pipe-Intake	③328	35062	1	Key-Ignition
③186	37860	1	Link-Governor	③329A	651060	1	Screw (8-32 X 23/64)
③186B	36653	1	Spring-Choke	③335	37096A	1	Cover-Carburetor (Front)
③200	35702	1	Bracket-Control	③335A	37087	1	Cover-Carburetor (Side)
③203	31342	1	Spring-Compression	③338	650821	15	Screw (10-32 X 1/2)
③204	651029	1	Screw (T-10, 5-40X7/16)	③341	37093	1	Bracket-Tank, Fuel (Lower)
③206	610973	2	Terminal (Shorting On-Off)	③342A	792028	2	Screw (5/16-18 X 7/8)
③207	37262	1	Link-Throttle	③343	35079A	1	Bracket-Switch, Key (Includes 329A)
③212	30773A	1	Bushing	③345	37097	1	Baffle-Heat
③212A	651017	1	Washer	③350	570682A	1	Primer ASM (Vented Snap-In)
③213	651056	1	Screw (10-24 X 29/32)	③351	32180C	1	Line-Primer
③215	35440	1	Knob-Control, Speed	③355	590574	1	Handle-Starter, Mitten Grip
③217	37260	1	Lever-Bellcrank	③361	650990	2	Screw (T-30, 1/4-20X15/32)
③219	35689	1	Rod-Choke	③369	651032	2	Screw (12-16 X 5/8)
③220	35438	1	Knob-Control, Choke	③370	36501	1	Decal-Primer, International Symbol
③222	651081	2	Screw (10-32 X 15/32)	③370	36534A	1	Instruction Decal-Caution, Read Owner Manual
③223	650971	2	Screw (T-30, 5/16-18 X 7/8)	③370	36695	1	Decal-Tecumseh Logo For Top Of Recoil Starter
③224	33515A	1	Gasket-Pipe, Intake	③370	37226	1	Decal-Choke
③260	37092A	1	Housing-Blower	③370	37433	1	Decal-Start Button, Electric
③262	651084	2	Screw (5/16-18X9/16)	③370	37948	1	Decal-Hot Surfaces
③265	37086	1	Cover-Head, Cylinder	③380	640169	1	Carburetor ASM (Includes 184)
③266	650876	2	Screw (5/16-18 X 1-9/32) (Manifold)	③390	590749	1	Starter-Rewind
③269	35762	2	Gasket-Manifold, Exhaust	③396	37102	1	Electric Starter Motor ASM (220 Volt)
③270	37263	1	Manifold, Exhaust	③400	37257A	1	Gasket Set
③270A	35829A	1	Liner-Port, Exhaust	③420	730226A	1	Oil-Engine, S A E 5W30
③271	35293	1	Plate-Locking (Manifold)	③704	650738	1	Screw (1/4-20 X 5/8)
③275	37264	1	Muffler (With Mounting Brackets)	①③999	730286	1	Winter Maintenance Kit
③276	35348	1	Plate-Locking	①③	911306D	1	Engine-Replacement
③277A	650877	2	Screw (5/16-18 X 4-1/2) (Muffler)	①③	756339C	1	Short Block-Replacement
③280	37265	1	Shield-Heat (Must Have Muffler 37264)				
③280A	37106	1	Shield-Heat, Radiation				
③280B	37879	1	Baffle-Restrictor, Air				
③285	35985C	1	Cup-Starter				
③290	37964	1	Line-Fuel, Low Permeation (32.0 Length)				
③291	37962	1	Line-Fuel, Low Permeation (8.62)				
③292	26460	4	Clamp-Line, Fuel				
③293A	650517	2	Screw (T-30, 1/4-20 X 27-32)				
③295	35857	1	Valve-Shut Off, Fuel (Includes 292)				
③298	650665	1	Screw (1/4-15X7/8)				
③300	37099A	1	Tank-Fuel (Includes 292, 301)				
③301	37844	1	Cap-Fuel (Black) (1-1/2 I D)				
③302	37098	1	Extension-Tank, Fuel				
③305	35574	1	Tube-Fill, Oil				
③307	35499	1	O-Ring				
③308	35539	1	Clip-Tube, Fill				



Carburetor Assembly No. 640169 Tecumseh OH318SA-221847B

Ref	Part No.	Qty.	Description
1	632777	1	Throttle Shaft And Lever ASM
1A	36288	1	Bushing
2	631970	1	Spring-Return, Throttle
6	640109	1	Shutter-Throttle
7	650506	2	Screw-Shutter
10	632778	1	Choke Shaft And Lever ASM
14	632189	1	Shutter-Choke
15	630735	1	Spring-Positioning, Choke
16	632527	1	Fitting-Fuel
17	651025	1	Screw-Throttle Crack And Idle Speed
18	630766	1	Spring-Tension
20	640027	1	Screw-Restrictor, Idle
20A	640053	1	Cap-Screw, Idle Restrictor
25	632594A	1	Float Bowl ASM (Includes 32, 33)
27	631024	1	Shaft-Float
28	632802	1	Float (Plastic)
29	631028	1	O Ring-Bowl, Float
30	631021	1	Seat And Clip-Inlet Needle (Includes 31)
31	631022	1	Clip-Spring
32	27136A	1	Bowl Drain ASM
33	27554	1	Gasket-Plunger, Drain
36	640013	1	Tube-Nozzle, Main

Ref	Part No.	Qty.	Description
37	632547	2	O Ring-Nozzle Tube, Main
40	640170	1	Nut-Bowl, High Speed
44	27110A	1	Washer-Nut, Bowl
47	630748	1	Plug-Welch, Idle Mixture Well
48	631027	1	Plug-Welch, Atmospheric Vent
60	632760	1	Repair Kit (Includes 7, 27, 29, 30, 37, 47, 48)
184	33263	1	Gasket-Carburetor To Intake Pipe

Attachments and Accessories

For 38651 - Power Max 11280XE Snowthrower

Product Name	Model/Part
Tire Chain Kit	107-3813
Snow Cab	107-3814
Weight Kit	107-3815
28 Inch Drift Breaker	107-3817

NOTES

NOTES

