



Foot Operated Lift Kit

For Groundsmaster 7200/7210 Traction Unit

Model No. 112-9540

Form No. 3358-656 Rev A

Installation Instructions

Installation

Loose Parts

Use the chart below to verify that all parts have been shipped.

| Procedure | Description | Qty. | Use |
|-----------|----------------------------|------|--------------------------------|
| 1 | Pedal shaft | 1 | Mount the pedal shaft assembly |
| | Self tapping screw | 3 | |
| 2 | Lift lever | 1 | Replace the deck lift lever |
| | Lever grip | 1 | |
| | Threaded rod | 1 | |
| 3 | Pedal | 1 | Assemble the linkage |
| | Threaded rod | 1 | |
| | Foam hose | 1 | |
| | Hex nut (3/8 inch) | 2 | |
| | Ball joint end | 1 | |
| | Linkage yoke | 1 | |
| | Screw (3/8 x 1-1/4 inches) | 1 | |
| | Nut (3/8 inch) | 1 | |
| 4 | Snap ring | 1 | Mount the linkage |
| | Clevis pin | 1 | |
| | Cotter pin | 1 | |

This kit can only be used on traction units with serial numbers after 270000001.

1

Mount the Pedal Shaft Assembly

Parts needed for this procedure:

| | |
|---|--------------------|
| 1 | Pedal shaft |
| 3 | Self tapping screw |

Procedure

1. Locate the two pilot holes in the right side of the carrier frame (Figure 1).

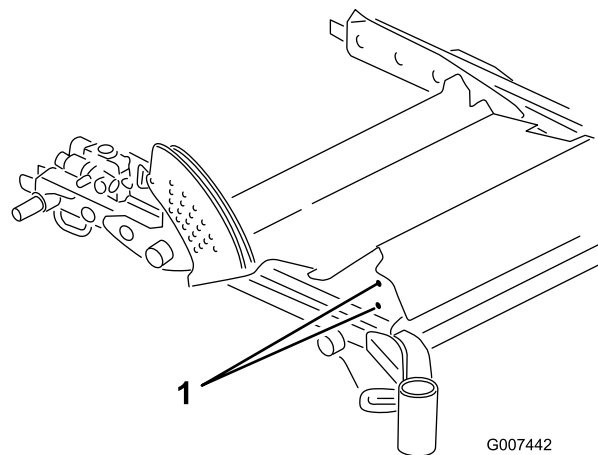


Figure 1

1. Pilot holes

2. Drill out the holes to 5/16 inch diameter.
3. Mount the pedal shaft to the side of the carrier frame with two 3/8 inch self tapping screws. Position the pedal stop on the side of the carrier frame as shown in Figure 2

2

Replace the Deck Lift Lever

Parts needed for this procedure:

| | |
|---|--------------|
| 1 | Lift lever |
| 1 | Lever grip |
| 1 | Threaded rod |

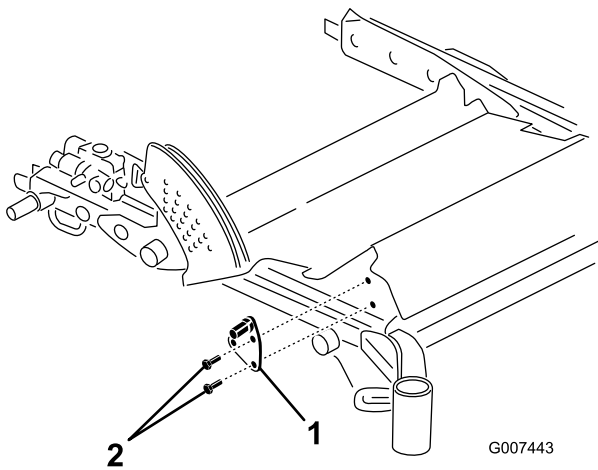


Figure 2

1. Pedal shaft
2. Self tapping screws

4. Using the remaining hole in the pedal shaft as a template, locate, mark and drill a 5/16 diameter hole in the side of the foot rest (Figure 3).

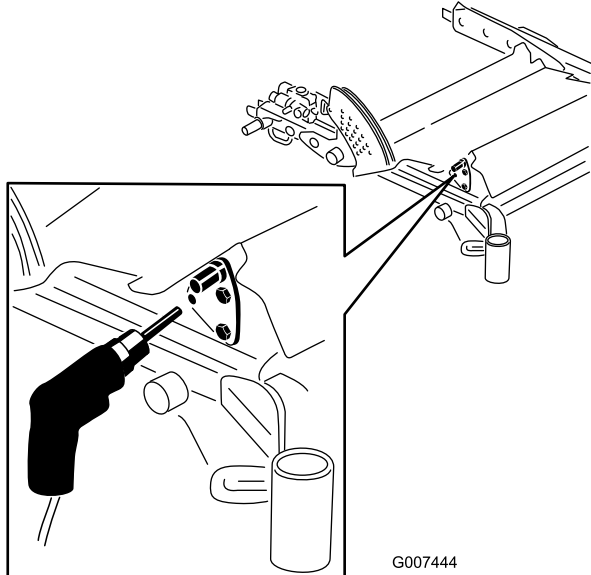


Figure 3

5. Secure the pedal shaft with a 3/8 inch self tapping screw.

Procedure

1. Lower the mower deck completely to the ground.
2. Remove the cotter pin securing the valve link to the lift lever (Figure 4). Remove the valve link from the lift lever. Retain all fasteners for installation of the new lift lever.

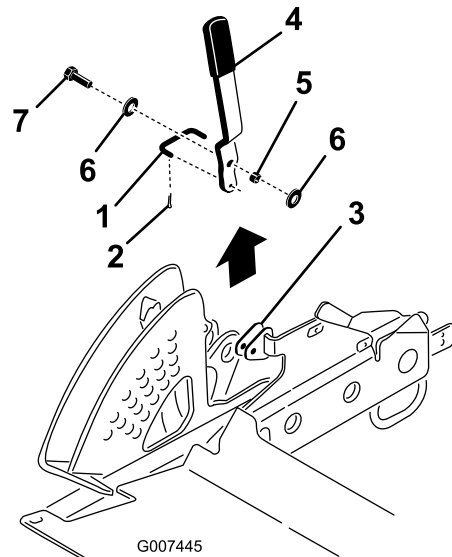


Figure 4

1. Valve link
2. Cotter pin
3. Frame
4. Lift lever
5. Spacer
6. Washer
7. Bolt

3. Remove the flange nut securing the lift lever to the frame (Figure 4). Carefully remove the bolt securing the washers, spacer and lift lever to the frame. Remove the lift lever.
4. Install the new grip onto the new lift lever (Figure 5). Use soapy water to ease the installation of the grip.
5. Mount the new lift lever, spacer and washers to the frame with the bolt and flange nut. Position the components as shown in Figure 5.

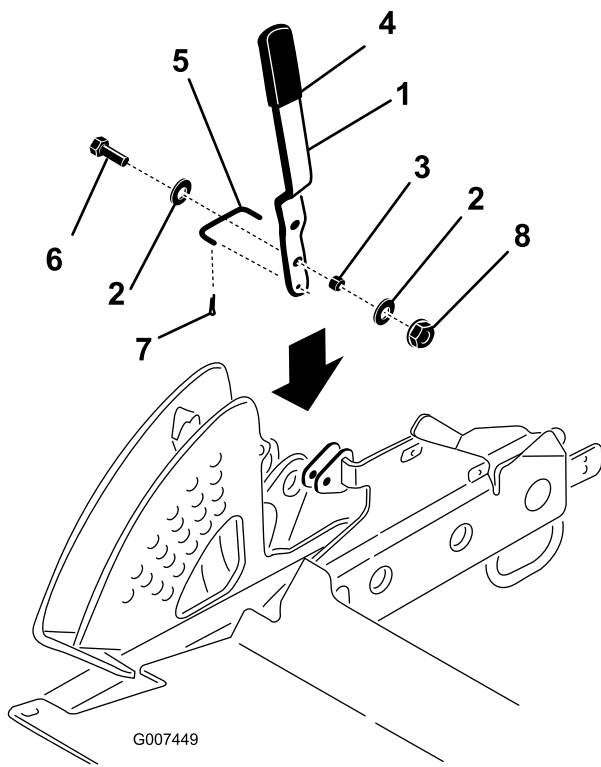


Figure 5

- | | |
|---------------|---------------|
| 1. Lift lever | 5. Valve link |
| 2. Washer | 6. Bolt |
| 3. Spacer | 7. Cotter pin |
| 4. Grip | 8. Flange nut |

6. Connect the valve link to the lift lever with a cotter pin Figure 5.

3

Assemble the Linkage

Parts needed for this procedure:

| | |
|---|----------------------------|
| 1 | Pedal |
| 1 | Threaded rod |
| 1 | Foam hose |
| 2 | Hex nut (3/8 inch) |
| 1 | Ball joint end |
| 1 | Linkage yoke |
| 1 | Screw (3/8 x 1-1/4 inches) |
| 1 | Nut (3/8 inch) |

Procedure

1. Slide the foam hose onto the threaded rod. Position the hose as shown in (Figure 6)

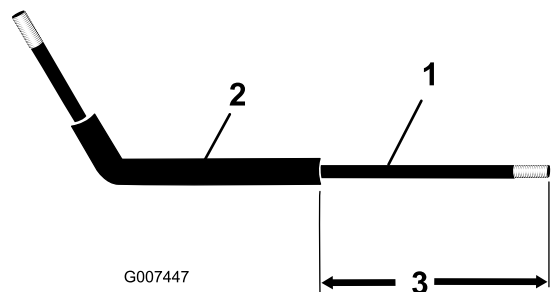


Figure 6

- | | |
|-----------------|--------------|
| 1. Threaded rod | 3. 10 inches |
| 2. Foam hose | |

2. Thread a hex nut onto each end of the threaded rod (Figure 7).

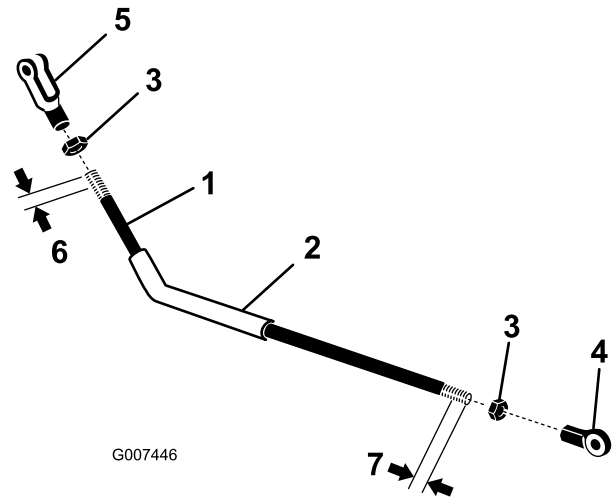


Figure 7

- | | |
|-----------------|-----------------|
| 1. Threaded rod | 5. Linkage yoke |
| 2. Foam hose | 6. .75 inch |
| 3. Hex nut | 7. .5 inch |
| 4. Ball joint | |

3. Thread the ball joint end onto the longer end of the threaded rod (Figure 7).
4. Thread the linkage yoke onto the other end of the threaded rod (Figure 7).
5. Using the dimensions shown in figure Figure 7, adjust the ball joint end and the linkage yoke of the threaded rod. Tighten the hex nuts.
6. Mount the ball joint end of the threaded rod to the pedal with a screw (3/8 x 1-1/4 inches) and flange nut (3/8 inch) (Figure 8).

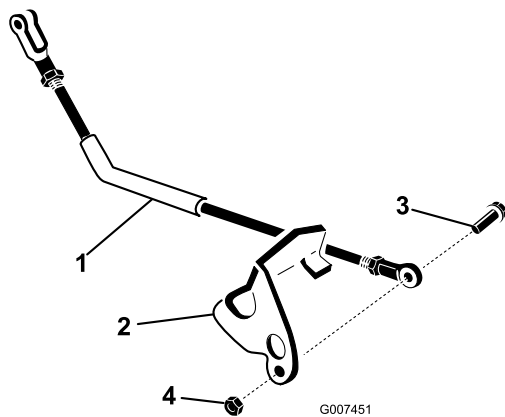


Figure 8

- | | |
|-----------------|---------------|
| 1. Threaded rod | 3. Bolt |
| 2. Pedal | 4. Flange nut |

Operation

The deck lift pedal raises and lowers the mower deck. The engine must be running for you to use this pedal.

- Press down on the front of lift pedal to raise the mower deck.
- Press down on the rear of lift pedal to lower the mower deck.

Important: Do not continue to hold the pedal down after the mower has fully raised or lowered. Doing so will damage the hydraulic system.

Note: To lock the mower deck in a raised position, raise the deck past the 6 inch (15 cm) position, remove the height of cut stop pin and place the pin in the 6 inch (15 cm) height-of-cut position. Refer to the *Operator's Manual* for adjusting height of cut instructions.

4

Mount the Linkage

Parts needed for this procedure:

| | |
|---|------------|
| 1 | Snap ring |
| 1 | Clevis pin |
| 1 | Cotter pin |

Procedure

1. Insert the pedal onto the pedal shaft and secure with the snap ring (Figure 9).
2. Connect the yoke end of the threaded rod to the lift lever with a clevis pin and cotter pin (Figure 9).

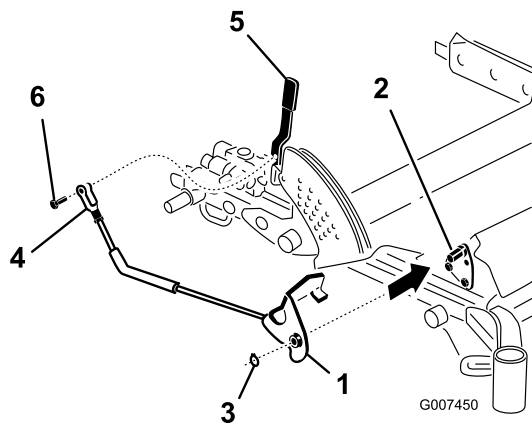


Figure 9

- | | |
|----------------|-----------------------------|
| 1. Pedal | 4. Yoke end of threaded rod |
| 2. Pedal shaft | 5. Lift lever |
| 3. Snap ring | 6. Clevis pin |