



## Foot-Operator Deck Lift Kit Groundsmaster® 7200/7210 Traction Unit

Model No. 112-9540

### Parts Catalog

#### Ordering Replacement Parts

To order replacement parts, please supply the part number, the quantity, and the description of each part desired.

#### Understanding Reference Numbers

Each Identified part in an illustration has a reference number. The reference number for a part also appears in the parts list, along with other information about the part.

This catalog uses two special reference number formats, one to indicate parts in a service assembly and another to indicate the quantity of a given part in an illustration.

#### Service Assembly Reference Numbers

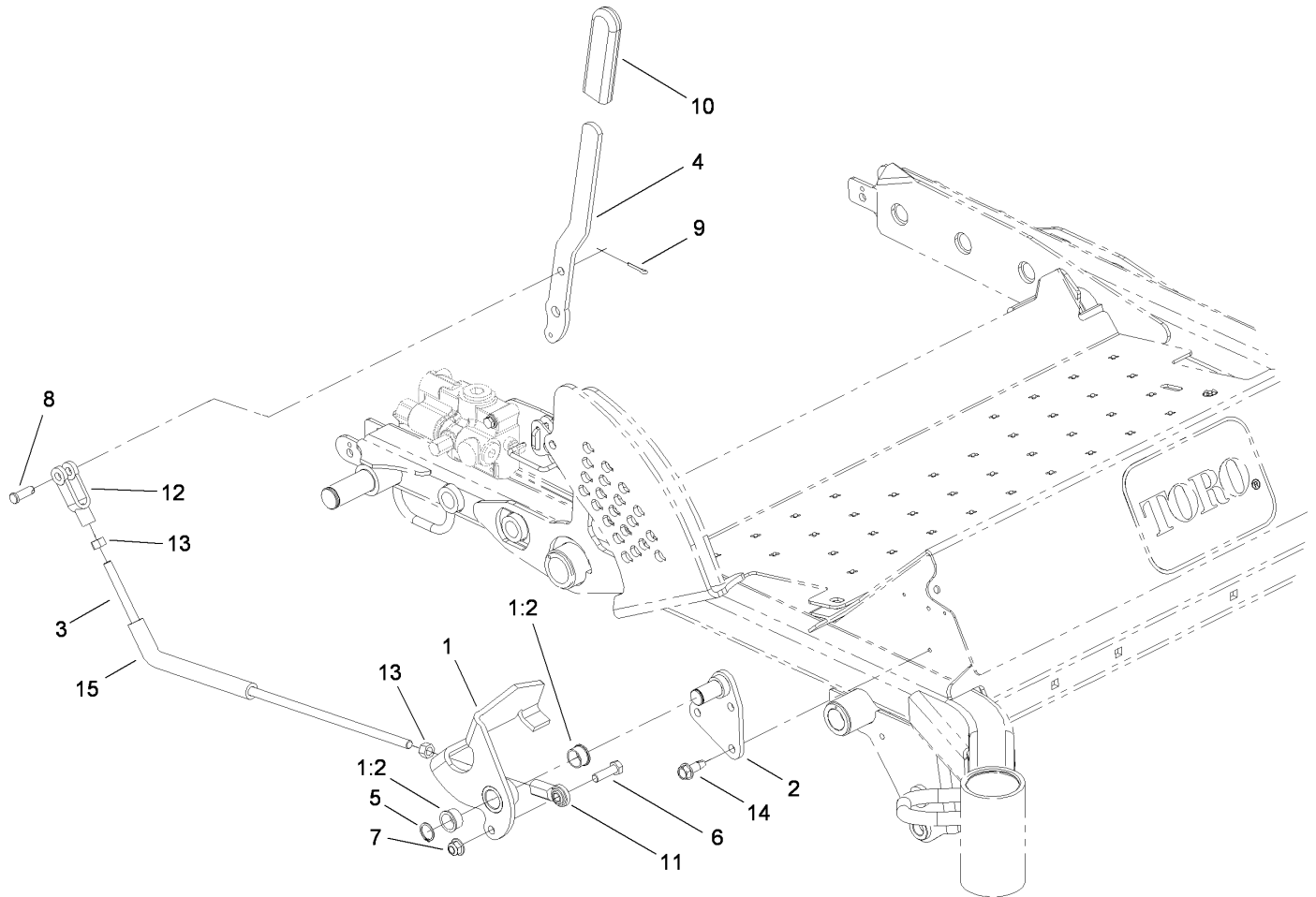
Parts in service assemblies have reference numbers in the form a:b. The a represents the reference number of the entire service assembly and the b represents a sequential number unique to each part within the service assembly.

For example, a wheel assembly might be identified by reference number 6, the tire by 6:1, the valve by 6:2, and the wheel by 6:3. When you order the assembly identified by reference number 6, you receive all parts identified by reference numbers 6:1, 6:2, and 6:3. However, you may also order any part individually. Reference numbers of this type appear in illustrations and in part lists.

#### Reference Numbers Indicating Quantity

In an illustration, if a reference number indicates more than one part, the reference number has the form nX y. The n represents the quantity of the part, the X is the multiplication symbol, and the y represents the reference number.

For example, in an illustration, the reference number 2X 37 means that two of the parts identified by reference number 37 are indicated.



## Foot-Operator Deck Lift Kit Assembly

Ref	Part No.	Qty.	Description				
1	112-9534	1	Pedal ASM				
1:2	256-252	2	Bearing-Flange				
2	112-9538-03	1	Pedal Shaft ASM				
3	112-9535	1	Rod-Threaded				
4	112-9541-03	1	Lever-Lift				
5	32120-72	1	Ring-Snap				
6	323-7	1	Screw-HH				
7	104-8301	4	Nut-Flange, NI				
8	283-2	1	Pin-Clevis				
9	3272-10	1	Pin-Cotter				
10	1-633268	1	Grip-Lever, Brake				
11	103-0608	1	Joint-Ball, End				
12	1-633131	1	Yoke-Linkage, Brake				
13	3219-3	2	Nut-Hex				
14	105-6245	3	Screw-Tapping				
15	114-4041	1	Hose-Foam				