



Basket Transport Kit

Reelmaster 6700-D Traction Unit

Model No. 114-3971

Form No. 3358-855 Rev A

Installation Instructions

Note: Determine the left and right sides of the machine from the normal operating position.

Installing the Basket Guides and Brackets

1. Use Figure 1 to determine the locations at which the new basket guides and basket brackets must be mounted to the #6 and #7 cutting unit carrier frames.

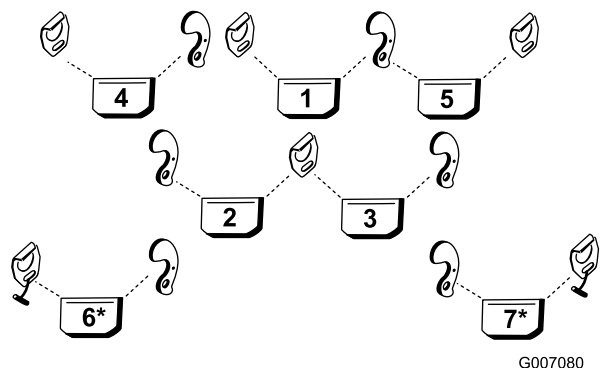


Figure 1

* The new parts are required at these locations when using the basket kit on Reelmaster 6700 Traction Units.

2. Remove the baskets from the #6 and #7 cutting unit carrier frames.
3. Remove the bolts and flat washers securing the basket guides to the outer ends of the #6 and #7 cutting unit carrier frames (Figure 1).

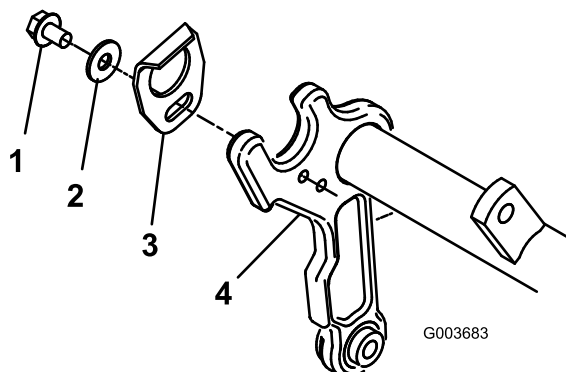


Figure 2

1. Bolt
2. Flat washer
3. Basket guide
4. Carrier frame

4. Using the bolts and washers removed, mount the new basket guides to the outer ends of the #6 and

#7 cutting unit carrier frames (Figure 3). The flexible latches are to be positioned forward.

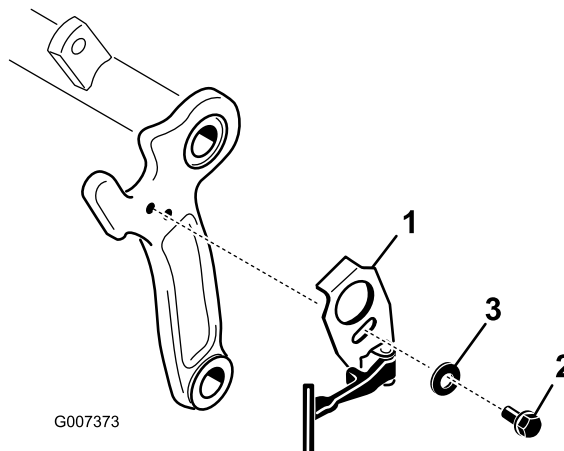


Figure 3

1. Basket guide
2. Bolt
3. Washer

5. Remove the carriage bolts and nuts securing the basket brackets to the outer sides of the #6 and #7 cutting unit baskets (Figure 4).

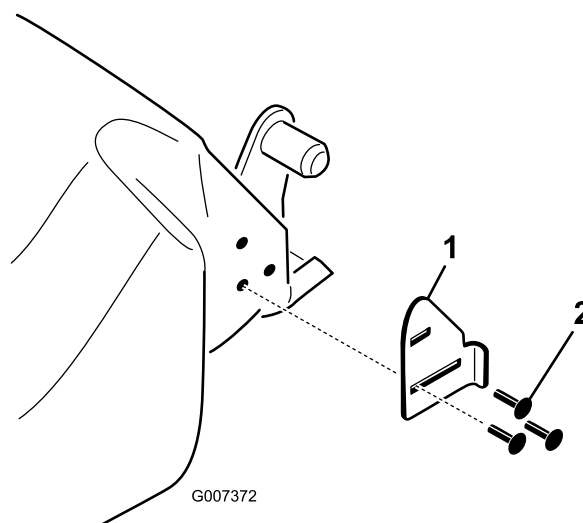


Figure 4

1. Basket bracket
2. Carriage bolts

6. Using the carriage bolts and nuts removed, loosely mount the new basket brackets to the outer sides of

the #6 and #7 cutting units, positioning as shown in Figure 5.

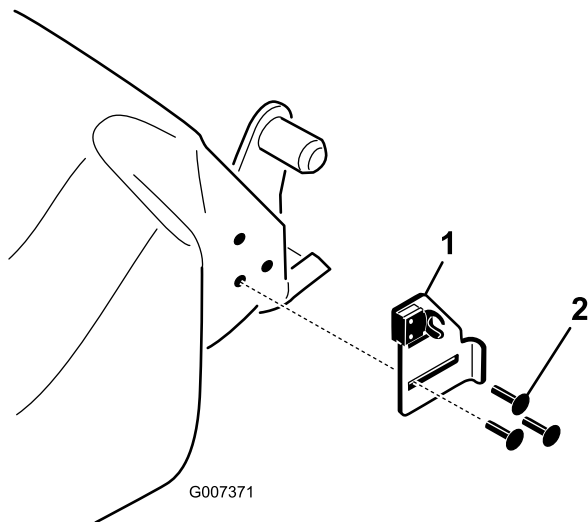


Figure 5

1. Basket bracket
2. Carriage bolts

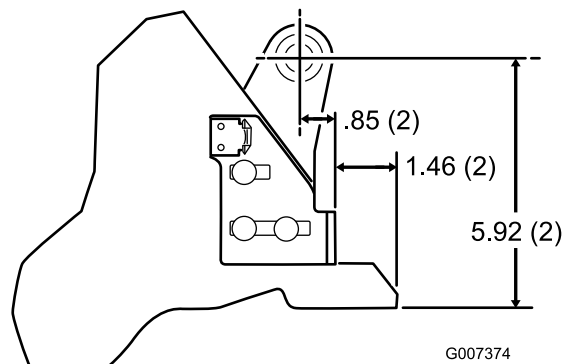


Figure 6

Note: When the #6 and #7 cutting units are raised to the transport position, secure the basket latches to the basket brackets.

7. Reinstall the baskets to the #6 and #7 cutting unit carrier frames by inserting the basket mounting pin into the basket guide bracket and depressing the opposite mounting pin into the pivoting basket bracket
8. Make sure the basket is parallel to the cutting unit with a minimum clearance of .250 inches (6 mm) between the lip of the basket and the reel. Use the following steps and dimensions to adjust the basket position.
 - On each side of the basket, loosen the carriage bolt nuts securing the basket brackets to the basket.
 - Position the basket so it is parallel to the cutting unit with a minimum clearance of .250 (6 mm) inches between the lip of the basket and the reel.
 - On each side of the basket, adjust the basket brackets so they each contact a carrier frame arm.
 - Tighten the carriage bolt nuts to secure the basket position.