



# Replacement Cable Kit

Air Cooled Heavy Duty-Workman Vehicles  
Liquid Cooled Heavy Duty-Workman Vehicles

Model No. 112-3215

Model No. 112-3216

## Installation Instructions

### Loose Parts

Use the chart below to verify that all parts have been shipped.

Procedure	Description	Qty.	Use
<b>1</b>	No parts required	–	Remove accelerator and clutch cables
<b>2</b>	Clutch cable assembly Accelerator cable assembly Lock nut-1/4 inch Lock nut-5/16 inch Screw-M8 Cable tie	1 1 3 1 2 4	Install accelerator and clutch cables
<b>3</b>	No parts required	–	Adjust the clutch cable
<b>4</b>	No parts required	–	Adjust the accelerator cable

### Tools Required

11/16 inch Wrench
1/2 inch Wrench
7/16 inch Wrench
5/16 inch Wrench
1/4 inch Drive Ratchet
7/16 inch Socket
1/2 inch Socket
Wire Cutter



**Before servicing or making adjustments to the machine, stop engine, set parking brake and remove key from ignition switch. Any load material must be removed from bed or other attachment before working under raised bed. Never work under a raised bed without positioning safety support on a fully installed cylinder rod.**

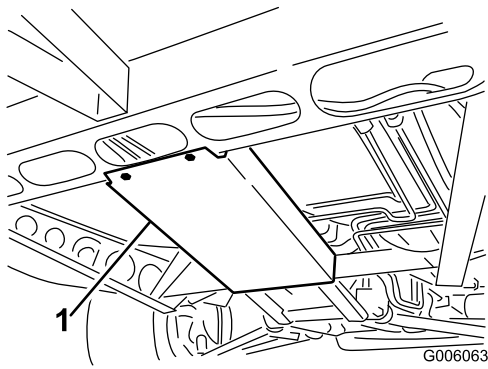
# 1

## Remove the Accelerator and Clutch Cables

### No Parts Required

### Procedure

1. Raise the bed (if so equipped) and place the safety support onto the extended lift cylinder to hold up the bed.
2. Position the vehicle on a level surface, stop the engine, engage the parking brake and remove the key from the ignition switch.
3. Remove the (4) screws securing the cover to the underside of the front frame (Figure 1).

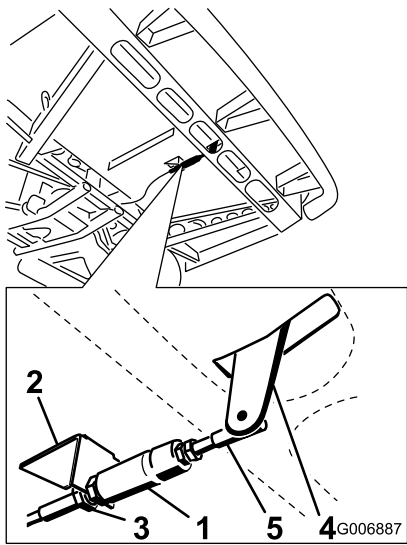


**Figure 1**

1. Cover

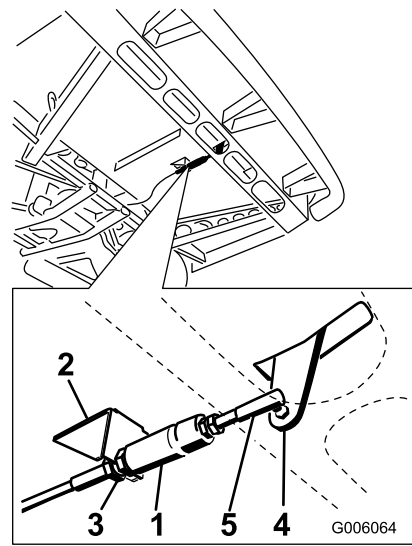
4. Loosen the jam nuts securing the accelerator cable to the bracket under the floor (Figure 2 or Figure 3).

**Note:** On models with serial numbers 240000001 thru 259999999, the accelerator cable is mounted to the left side of the accelerator pedal (Figure 2). On models with serial numbers 260000001 and up, the accelerator cable is mounted to the right side of the accelerator pedal (Figure 3).



**Figure 2**

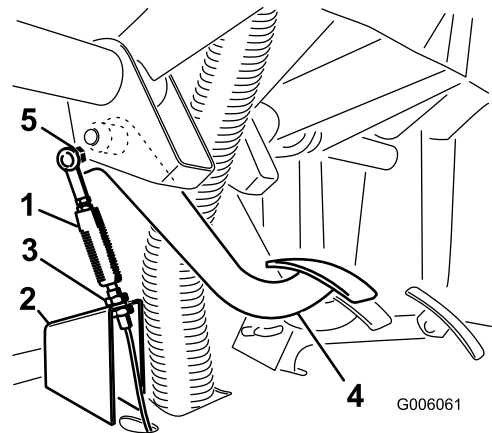
- |                      |                      |
|----------------------|----------------------|
| 1. Accelerator cable | 4. Accelerator pedal |
| 2. Bracket           | 5. Ball joint        |
| 3. Jam nuts          |                      |



**Figure 3**

- |                      |                      |
|----------------------|----------------------|
| 1. Accelerator cable | 4. Accelerator pedal |
| 2. Bracket           | 5. Ball joint        |
| 3. Jam nuts          |                      |

5. Unsnap the accelerator cable end from the ball joint stud on the accelerator pedal ball joint (Figure 2 or Figure 3).
6. Remove the nut securing the accelerator cable ball joint to the accelerator pedal (Figure 2 or Figure 3). Remove the ball joint.
7. Loosen the jam nuts securing the clutch cable to the bracket (Figure 4).

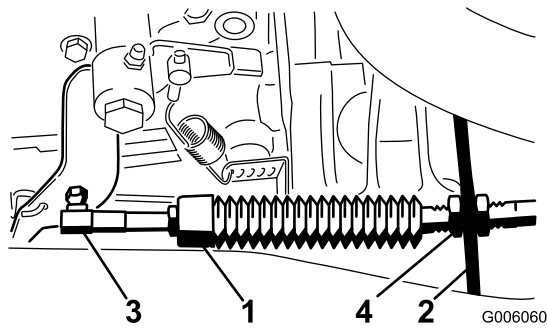


**Figure 4**

- |                 |                 |
|-----------------|-----------------|
| 1. Clutch cable | 4. Clutch pedal |
| 2. Bracket      | 5. Ball joint   |
| 3. Jam nuts     |                 |

8. Remove the nut securing the clutch cable ball joint to the clutch pedal (Figure 4). Remove the ball joint.
9. Cut and remove the cable ties securing the clutch and accelerator cables to the machine. Note the location of the cable ties.

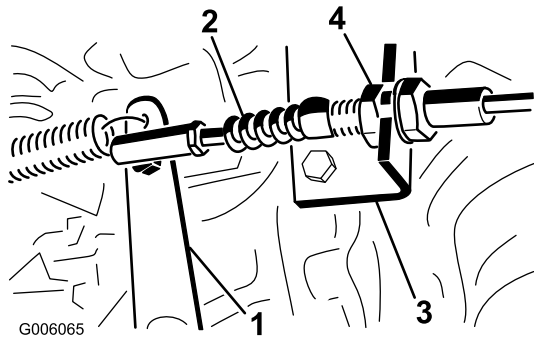
- Loosen the jam nuts securing the accelerator cable to the engine bracket (Figure 5).



**Figure 5**

- Accelerator cable
- Engine bracket
- Ball joint
- Jam nuts

- Unsnap the accelerator cable end from the ball joint stud on the engine (Figure 5).
- Remove the nut securing the accelerator cable ball joint to the engine (Figure 5). Remove the ball joint.
- Remove the (2) capscrews securing the clutch cable mounting bracket to the bell housing (Figure 6).



**Figure 6**

- Clutch lever
- Clutch cable
- Clutch cable mounting bracket
- Jam nuts

- Remove the nut securing the clutch cable ball joint to the clutch lever (Figure 6).
- Remove the cables by slowly pulling them out from the rear of the machine. Note the routing of the cables. Use caution not to damage any machine components.

# 2

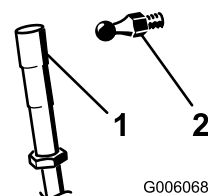
## Install the New Accelerator and Clutch Cables

### Parts needed for this procedure:

1	Clutch cable assembly
1	Accelerator cable assembly
3	Lock nut-1/4 inch
1	Lock nut-5/16 inch
2	Screw-M8
4	Cable tie

### Procedure

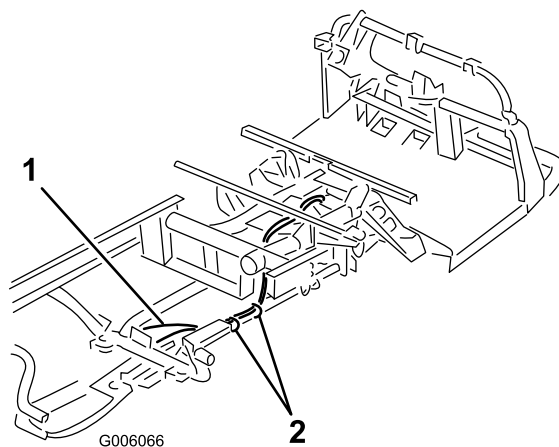
- Unsnap the ball joint from each end of the new accelerator cable (Figure 7).



**Figure 7**

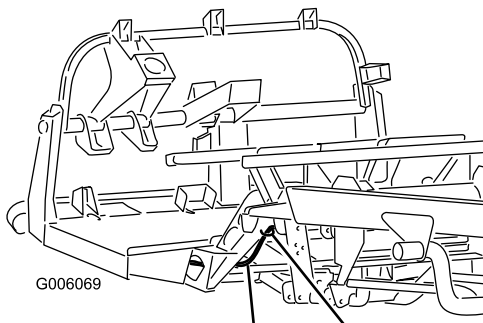
- Accelerator cable
- Ball joint

- Together, route the cables from the back of the machine to the front, going over the suspension and thru the square hole in the frame (Figure 8 & Figure 9). Make sure the clutch cable end with the mounting bracket attached is positioned to the rear.



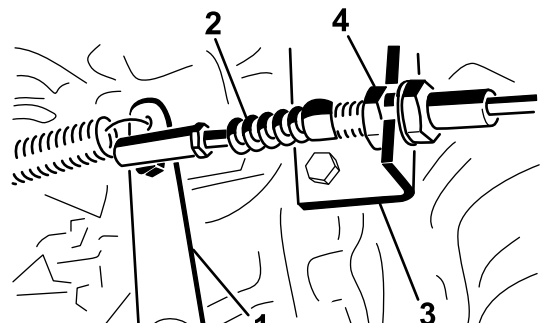
**Figure 8**

- Cables
- Cable ties (2)



**Figure 9**

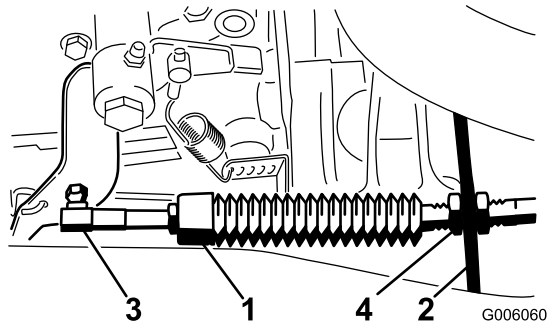
- 1. Cables
- 2. Cable ties (2)



**Figure 11**

- 1. Clutch lever
- 2. Clutch cable
- 3. Mounting bracket
- 4. Jam nuts

- 3. Mount the accelerator cable ball joint to the engine with a 1/4 inch lock nut (Figure 10).
- 4. Snap the accelerator cable end onto the ball joint stud (Figure 10).



**Figure 10**

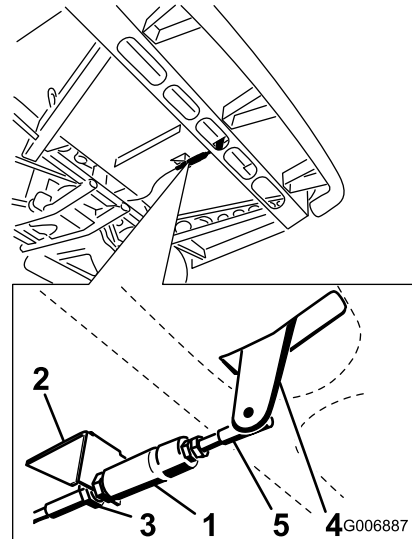
- 1. Accelerator cable
- 2. Engine bracket
- 3. Ball joint
- 4. Jam nuts

- 5. Adjust the jam nuts on the threaded cable barrel so there is an equal amount of threads on each side of the jam nuts. Tighten the jam nuts (Figure 10).
- 6. Secure the clutch cable ball joint to the clutch lever with a 5/16 inch lock nut (Figure 11).
- 7. Install the clutch cable mounting bracket to the bell housing with (2) M8 screws (Figure 11).

- 8. Mount the accelerator cable ball joint to the accelerator pedal with 1/4 inch lock nut (Figure 12 or Figure 13).

**Note:** On models with serial numbers 240000001 thru 259999999, the accelerator cable is mounted to the left side of the accelerator pedal (Figure 12). On models with serial numbers 260000001 and up, the accelerator cable is mounted to the right side of the accelerator pedal (Figure 13).

- 9. Snap the accelerator cable end onto the ball joint stud (Figure 12 or Figure 13).
- 10. Position the accelerator cable onto the floor bracket below the floor (Figure 12 or Figure 13).



**Figure 12**

- 1. Accelerator cable
- 2. Bracket
- 3. Jam nuts
- 4. Accelerator pedal
- 5. Ball joint

# 3

## Adjust the Clutch Cable

### No Parts Required

### Procedure

1. Adjust the jam nuts until the back rear edge of the clutch pedal is 3-3/4 inches  $\pm$  1/8 inch from the top of the floor plate, when an 4 lb. force is applied to the pedal (Figure 15).

**Note:** The ball joint may be removed and rotated, if additional adjustment is required.

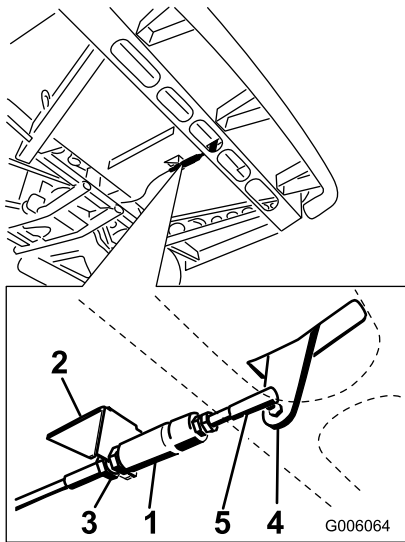


Figure 13

- |                      |                      |
|----------------------|----------------------|
| 1. Accelerator cable | 4. Accelerator pedal |
| 2. Bracket           | 5. Ball joint        |
| 3. Jam nuts          |                      |

- 
11. Carefully route the front end of the clutch cable thru the hole in the floor.
  12. Mount the clutch cable ball joint to the clutch pedal with 1/4 inch lock nut (Figure 14).
  13. Position the clutch cable onto the floor bracket (Figure 14).

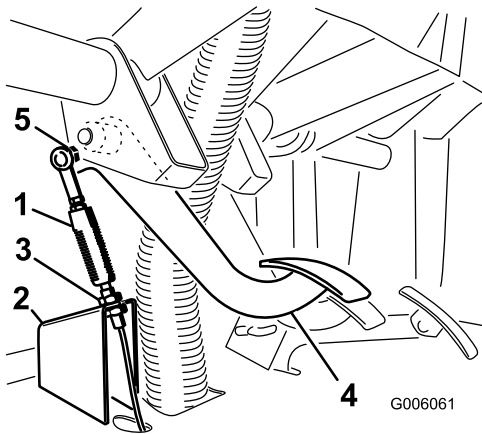


Figure 14

- |                  |                 |
|------------------|-----------------|
| 1. Clutch cable  | 4. Clutch pedal |
| 2. Floor bracket | 5. Ball joint   |
| 3. Jam nuts      |                 |

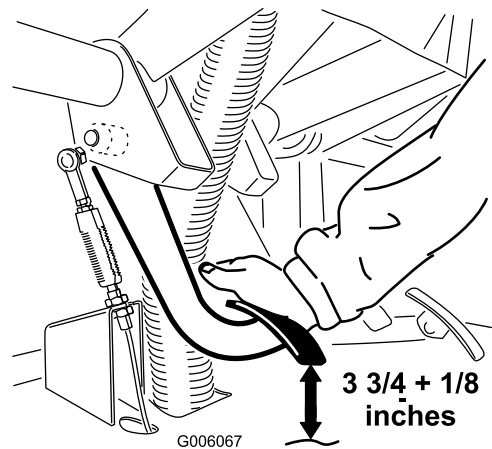


Figure 15

**Note:** Force is applied so the clutch release bearing lightly contacts pressure plate fingers.

2. Tighten the jam nuts after the adjustment has been attained.
3. Recheck the 3-3/4 inch  $\pm$  .1/8 inch dimension after the jam nuts have been tightened to ensure proper adjustment. Readjust, if necessary.

**Note:** The clutch free play should never be less than .75 inch.

# 4

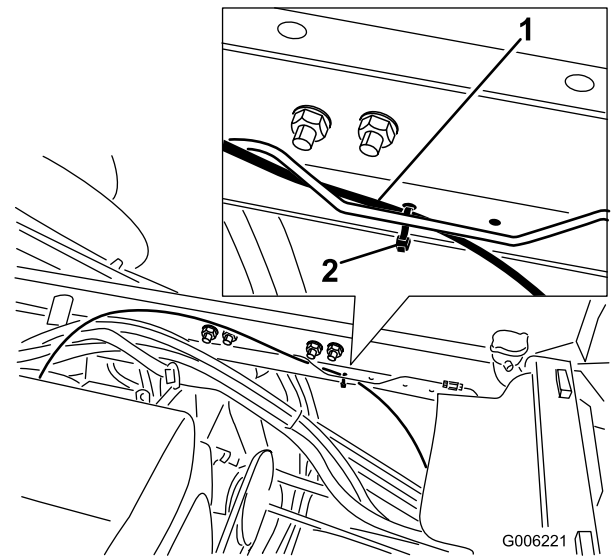
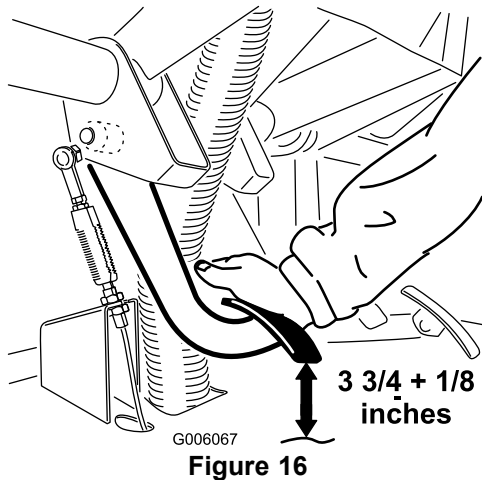
## Adjust the Clutch Cable

### No Parts Required

### Procedure

1. Adjust the jam nuts until the back rear edge of the accelerator pedal is 1/4 inch from the top of the floor plate, when the pedal is fully depressed (Figure 16).

**Note:** The ball joint may be removed and rotated, if additional adjustment is required.



1. Accelerator cable
2. Cable tie

2. Tighten the jam nuts after the adjustment has been attained.
3. Recheck the 1/4 inch dimension after the jam nuts have been tightened to ensure proper adjustment. Readjust, if necessary.
4. Reinstall the brake and clutch cover to the underside of the front frame with the (4) screws previously removed.
5. Check the adjustments every 200 hours.
6. At the locations shown in Figure 8 & Figure 9, secure the cables to the machine with cable ties. Also, on air cooled machines only, secure the accelerator cable to the left frame channel with a cable tie (Figure 17).





**Count on it.**