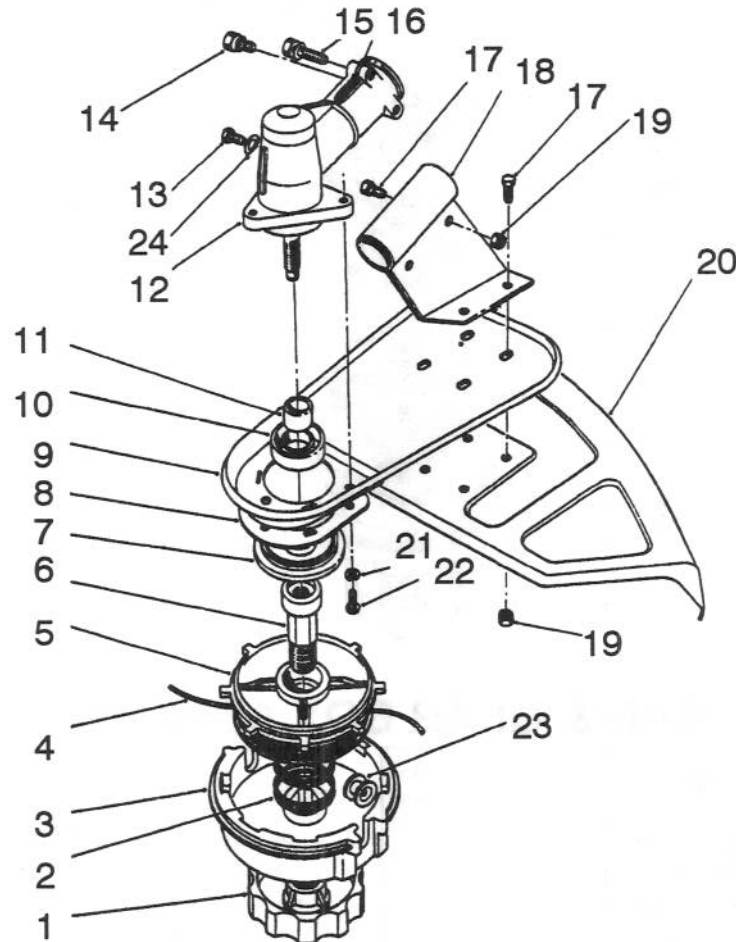


TORO[®]

MODEL NO. 51660-200001 & UP

**PARTS
CATALOG****TC 3500 GAS TRIMMER**

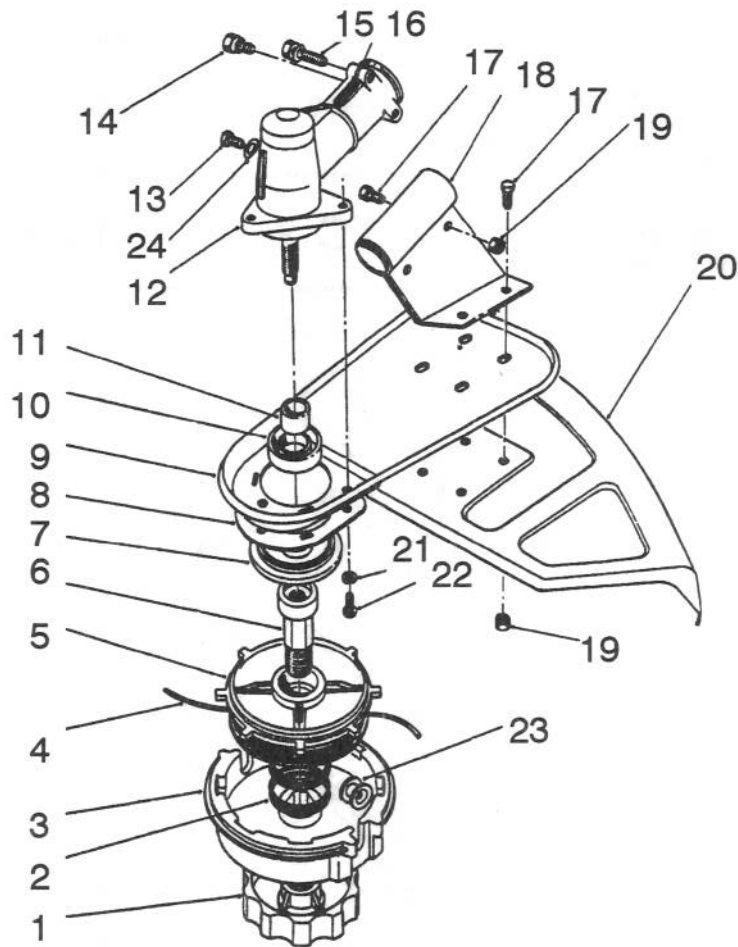
C-0223

CUTTER HEAD & GEAR BOX ASSEMBLY

Ref. No.	Part No.	Description	No. Used	Ref. No.	Part No.	Description	No. Used
1	57-5580	Knob - L.H.	1	*	46-2740	Line - Cutting .130 Dia. (465' 3Lb. Optional)	1
2	57-5620	Spring	1	5	57-5590	Spool - Inner	1
3	57-5600	Spool Housing Assembly	1	6	57-5610	Shaft	1
4		Line - Cutting .105 Dia. 11'	1	7	48-2080	Cap - Dust	1
*	43-5000	Line - Cutting .08 Dia. (38' Optional)	1	8	57-5540	Guard - Grass Wrap	1
*	46-2710	Line - Cutting .08 Dia. (405' 1Lb. Optional)	1	9	47-2800	Support - Shield	1
*	41-6820	Line - Cutting .095 Dia. (285' 1 Lb. Optional)	1	10	48-2090	Seal - Oil	1
*	46-2730	Line Cutting .105 Dia. (235' 1Lb. Optional)	1	11	48-2100	Sleeve - Spline	1
*	52-5070	Line - Cutting .105 Dia. (20' Optional)	1	12	52-5710	Gear Box Assembly (Incl. Ref.#10,11,13-16 & 24)	1
				13	48-2110	Screw - Hex. Hd.	1
				14	48-2150	Screw - Hex. Hd.	1
				15	48-2130	Screw - Hex. Hd.	2

*Not Illustrated

TPS

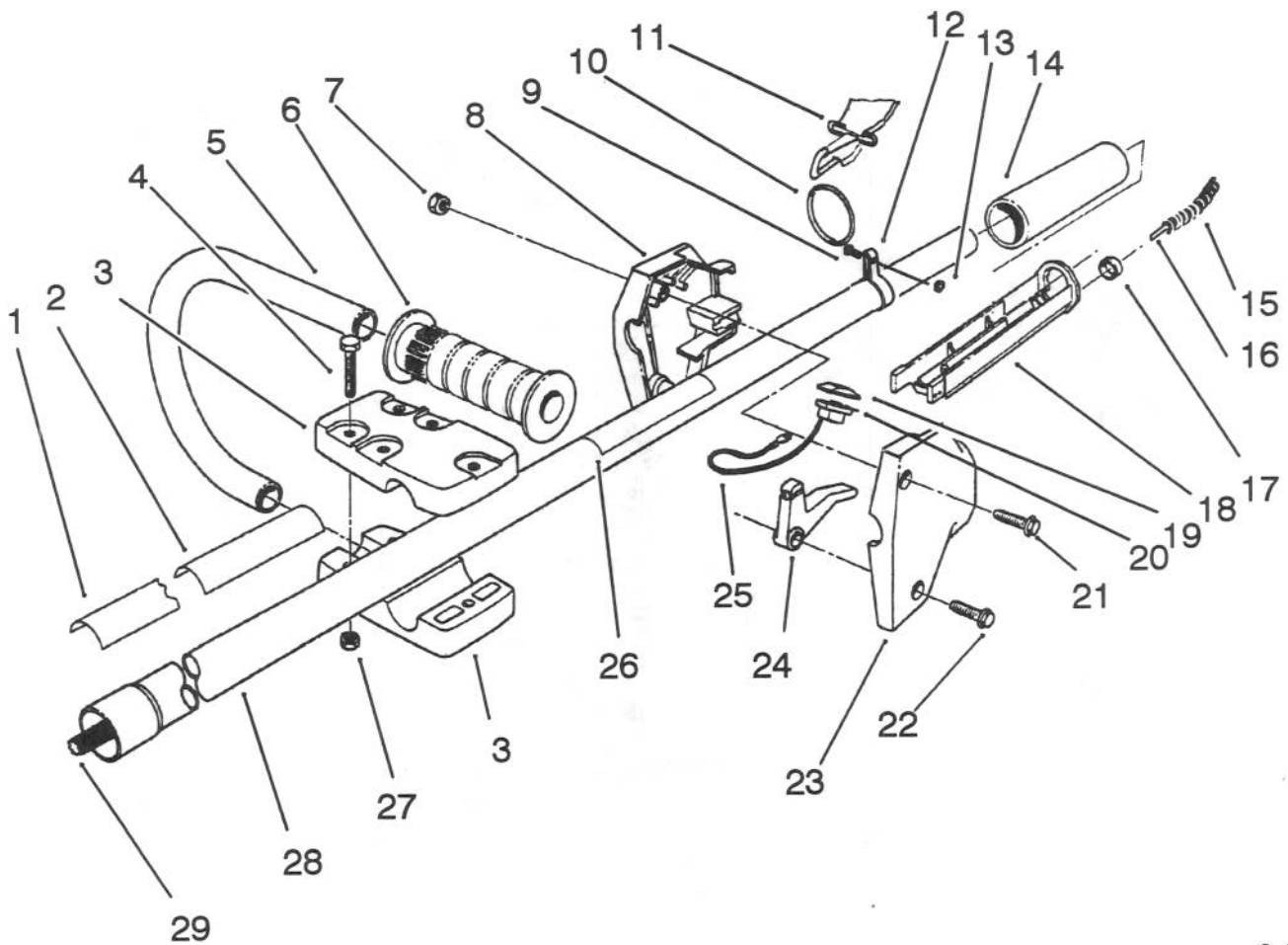


C-0223

CUTTER HEAD & GEAR BOX ASSEMBLY (continued)

Ref. No.	Part No.	Description	No. Used	Ref. No.	Part No.	Description	No. Used
16	48-2140	Washer - Flat	2	22	57-5550	Screw - Guard	3
17	32105-8	Screw - Hex. Hd.	6	23	57-5630	Eyelet	2
18	47-2760	Bracket - Shield	1	24	48-2120	Gasket - Washer	1
19	3296-2	Nut - Lock	6	*	57-5670	Cutter Head Assembly (Incl. Ref.#1-6 & 23)	1
20	61-4570	Shield - Grass	1				
21	55-8050	Washer - Lock	3				

*Not Illustrated

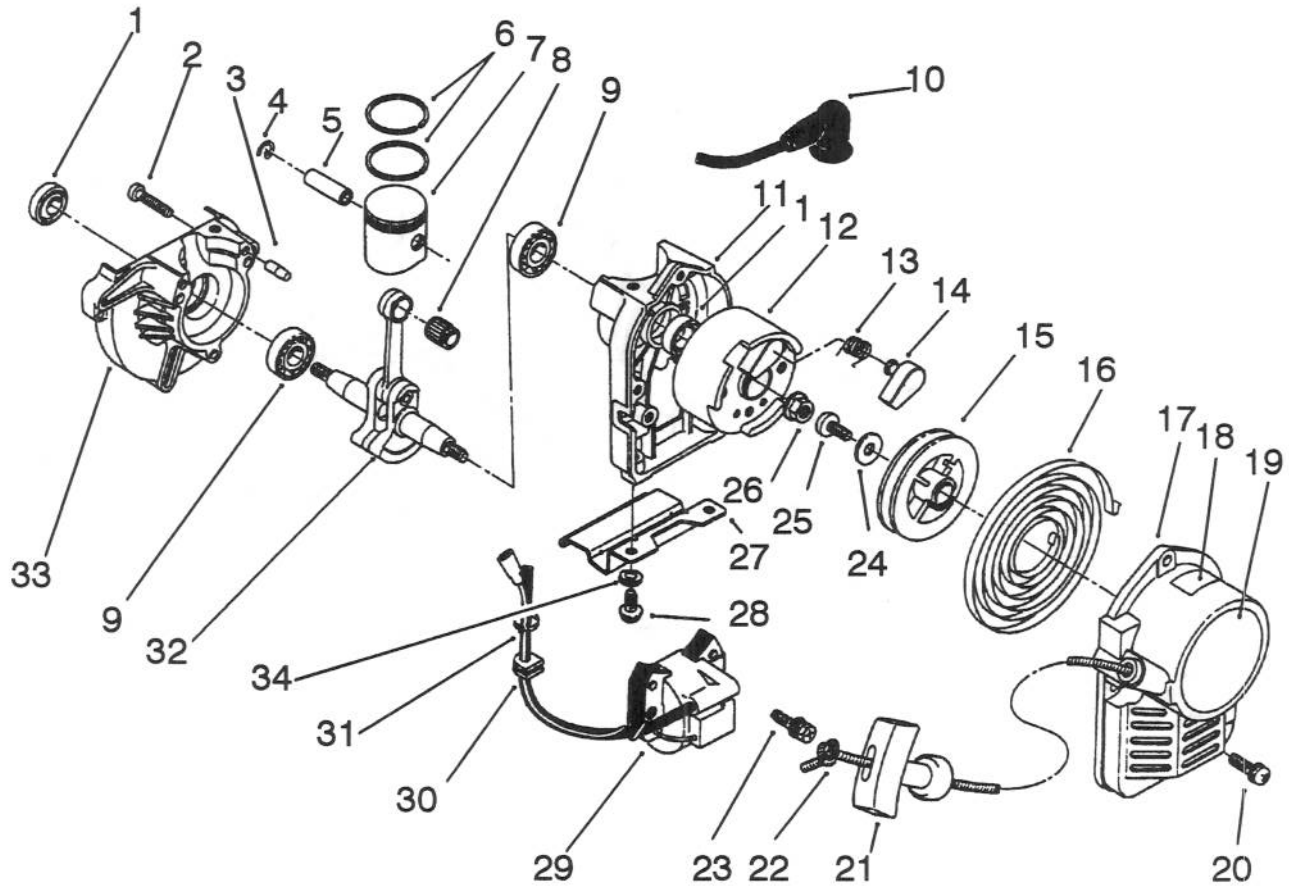


C-0224

HANDLE ASSEMBLY

Ref. No.	Part No.	Description	No. Used
1	61-4490	Decal - TC 3500	1
2	83-6020	Decal - Danger	1
3	53-7080	Clamp - Secondary	2
4	3290-360	Screw - Hex. Hd. Machine	5
5	61-4770	Handle - Secondary	1
6	235-24	Grip - Handle	1
7	3296-12	Nut - Lock	2
8	57-5481	Housing R.H.	1
9	3251-4	Screw	1
10	44-7540	Ring - Harness	1
11	57-5430	Harness - Shoulder	1
12	44-7550	Clamp - Harness	1
13	3296-12	Nut - Lock	1
14	53-7120	Grip - Drive Housing	1
15	55-8411	Cover - Cable	1

Ref. No.	Part No.	Description	No. Used
16	76-4370	Cable - Throttle	1
17	2412-48	Clip	2
18	53-7290	Trough	1
19	218-557	Cap - Switch	1
20	42-6000	Switch	1
21	32105-12	Screw - Hex. Hd.	1
22	57-5420	Screw	1
23	57-5491	Housing L.H.	1
24	53-7273	Lever - Throttle	1
25	53-7370	Wire	2
26	83-6620	Decal - Danger	1
27	3296-2	Nut - Lock	5
28	61-4390	Tube Assembly	1
29	53-7211	Shaft - Spline, Drive	1



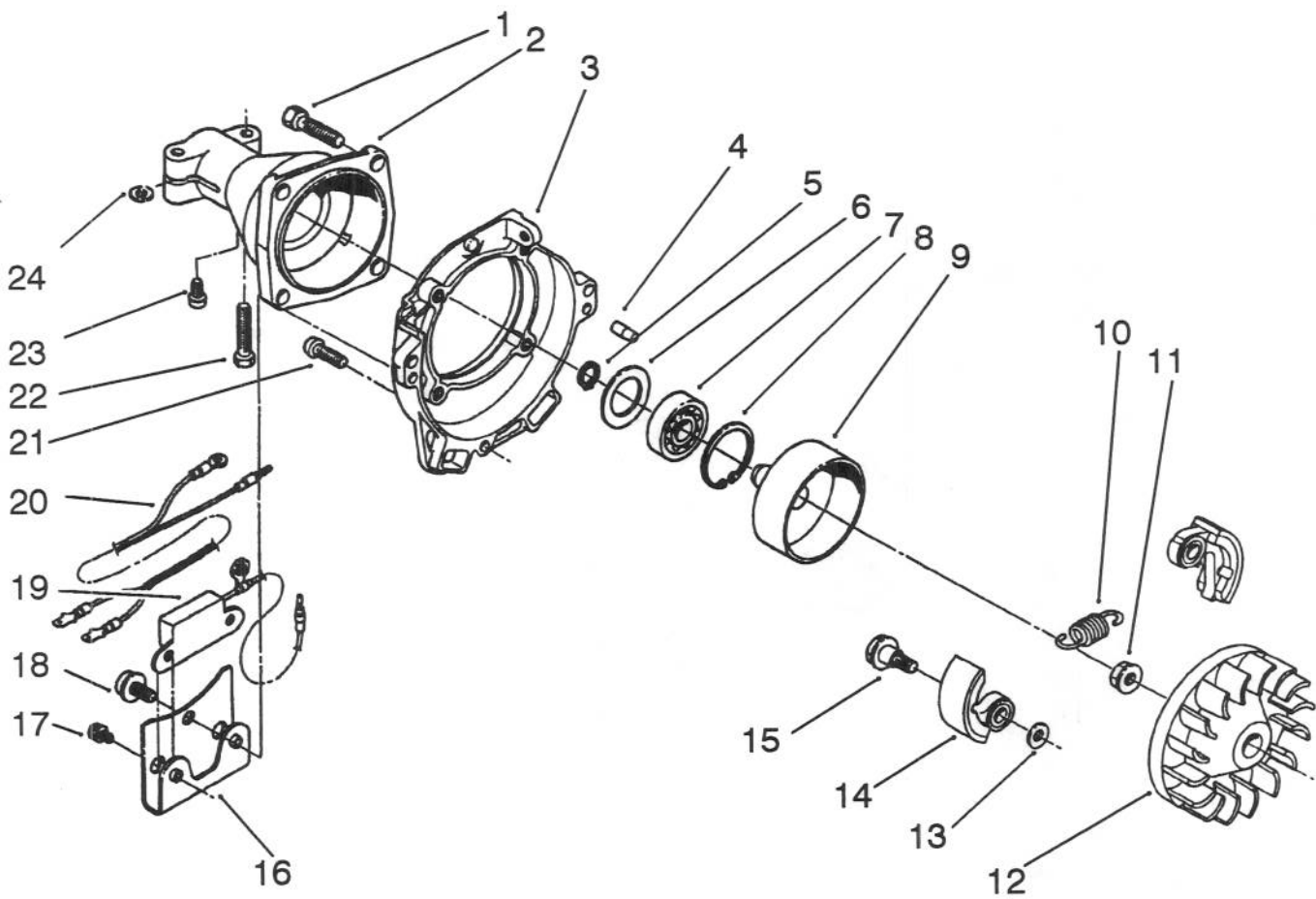
C-1166

ENGINE ASSEMBLY

Ref. No.	Part No.	Description	No. Used
1	54-4380	Seal - Oil	2
2	54-4330	Screw	3
3	60-7590	Pin - Dowel	4
4	54-5920	Clip - Piston Pin	2
5	54-5910	Pin - Piston	1
6	54-5490	Ring - Piston	2
7	54-5900	Piston Assembly (Incl. Ref.# 5)	1
8	54-5930	Bearing - Needle	1
9	54-4360	Bearing - Ball	2
10	54-4730	Cap - Plug	1
11	60-7600	Case - Starter Side	1
12	88-0190	Rotor Assembly (Incl. Ref.# 13-14)	1
13	77-1370	Spring - Return	1
14	77-1380	Rockets	1
15	60-8230	Reel	1
16	54-5420	Spring - Spiral	1
17	88-0120	Case - Starter	1

Ref. No.	Part No.	Description	No. Used
18	65-2690	Decal - Hot	2
19	86-9450	Decal - Toro	1
20	60-7930	Screw/Washer	3
21	54-5440	Knob - Starter	1
22	54-6370	Rope - Starter	1
23	60-7610	Bolt/Washer	2
24	54-5400	Washer	1
25	88-0200	Screw	1
26	54-4670	Nut	1
27	82-6110	Stand	1
28	46-0053	Screw/Washer	1
29	60-7860	Coil - Ignition	1
30	60-7840	Grommet	1
31	54-5990	Band	1
32	77-1330	Crankcase Assembly	1
33	60-7650	Case - Drive Side	1
34	3254-8	Washer - Lock	2
*	88-0110	Recoil Assembly (Incl. Ref. #16-18, 22, 24 & 25)	1

*Not Illustrated

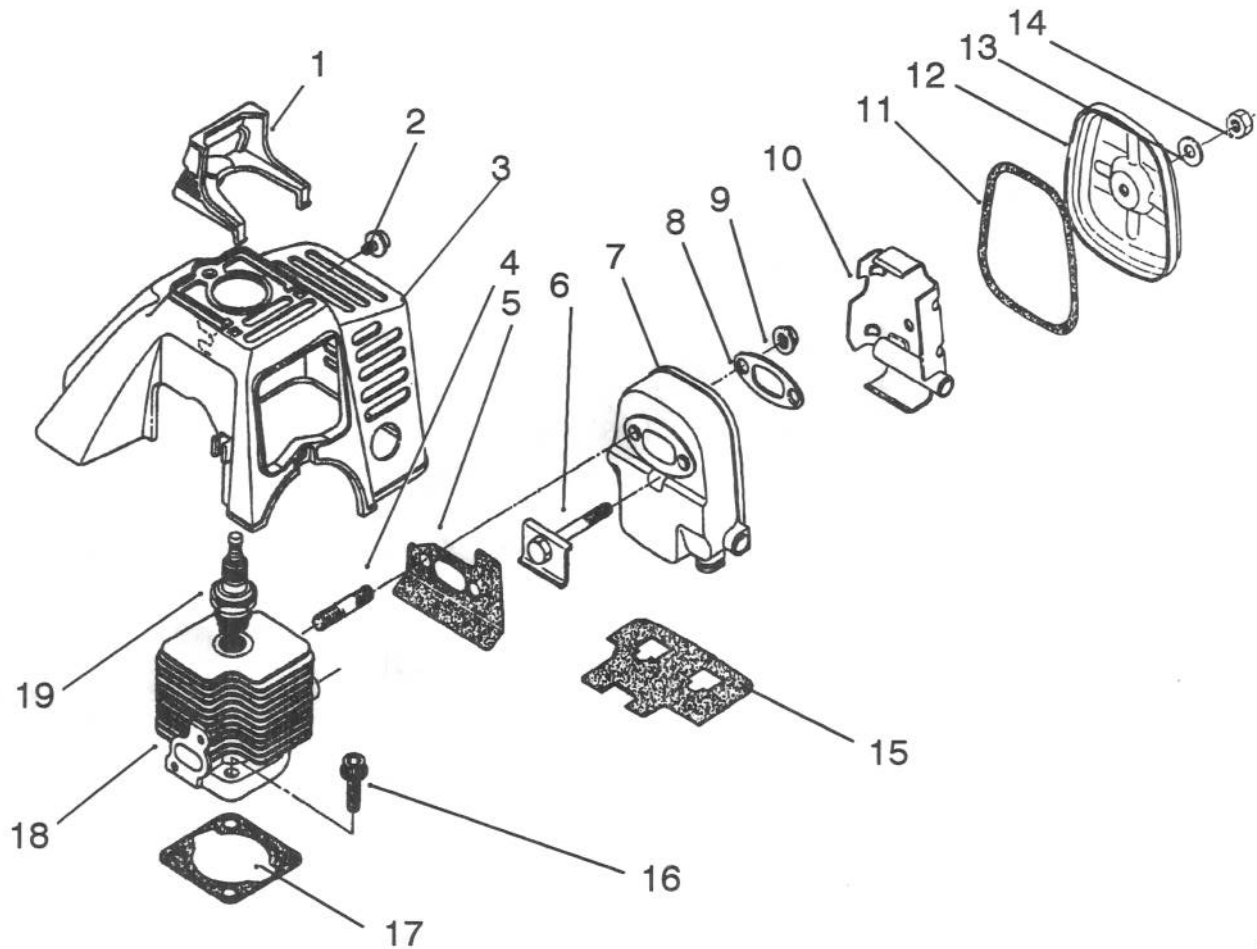


C-0213

ENGINE ASSEMBLY (Continued)

Ref. No.	Part No.	Description	No. Used
1	54-5720	Screw/Washer	4
2	65-2530	Case - Clutch	1
3	88-0170	Case - Fan	1
4	60-7590	Pin - Dowel	2
5	54-5690	Ring - Retaining	1
6	54-5700	Washer	1
7	54-5680	Bearing - Ball	1
8	54-5670	Ring - Retainer	1
9	54-6250	Drum - Clutch	1
10	65-4440	Spring	1
11	54-4670	Nut	1
12	65-2580	Fan	1
13	65-4450	Washer	2

Ref. No.	Part No.	Description	No. Used
14	54-6220	Shoe - Clutch	2
15	54-5290	Bolt - Clutch	2
16	60-7630	Bracket - Unit	1
17	54-4610	Screw/Washer	2
18	60-7620	Screw/Washer	1
19	65-2590	Transistor - Unit	1
20	54-6020	Wire	1
21	60-7610	Bolt/Washer	3
22	54-5740	Bolt/washer	2
23	65-2550	Screw/Washer	1
24	65-2540	Washer	2
*	77-1830	Clutch Assembly (Incl. Ref. #10 &14)	1

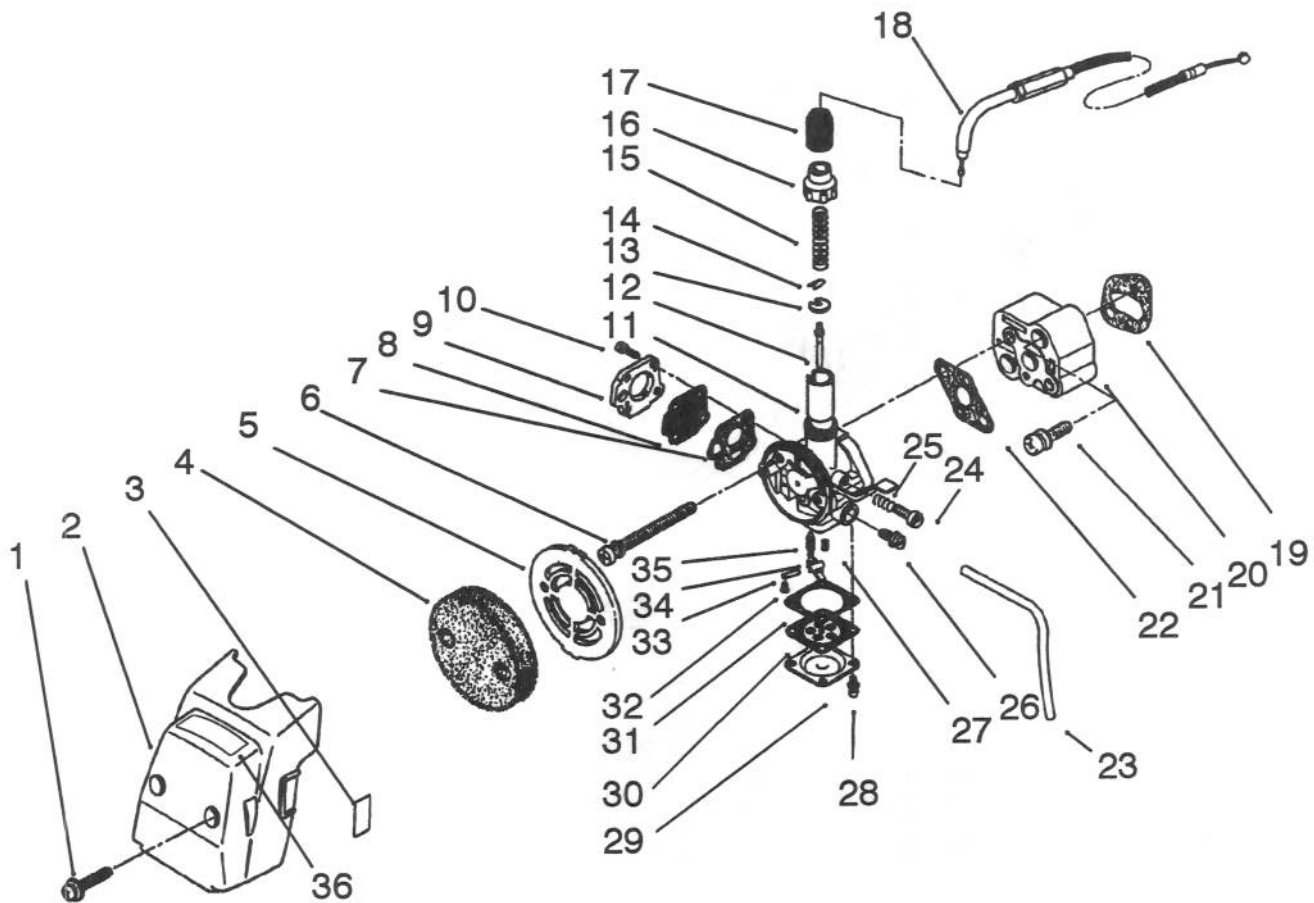


C-0214

ENGINE ASSEMBLY (Continued)

Ref. No.	Part No.	Description	No. Used	Ref. No.	Part No.	Description	No. Used
1	60-7670	Guard - Spark Plug	1	11	60-8100	Gasket - Muffler Seal	1
2	60-7680	Screw/Washer	1	12	60-8110	Lid - Muffler	1
3	88-0100	Cover - Top	1	13	65-4410	Washer	1
4	60-7700	Stud	2	14	65-4420	Nut	1
5	65-2620	Gasket - muffler	1	15	88-0130	Gasket	1
6	65-2630	Bolt	1	16	60-7720	Bolt - Flange	2
7	65-2640	Body - muffler	1	17	60-7730	Gasket - Cylinder	1
8	60-8070	Plate	1	18	65-2570	Cylinder	1
9	60-7770	Nut	2	19	77-1350	Spark Plug	1
10	65-4400	Plate	1				

*Not Illustrated



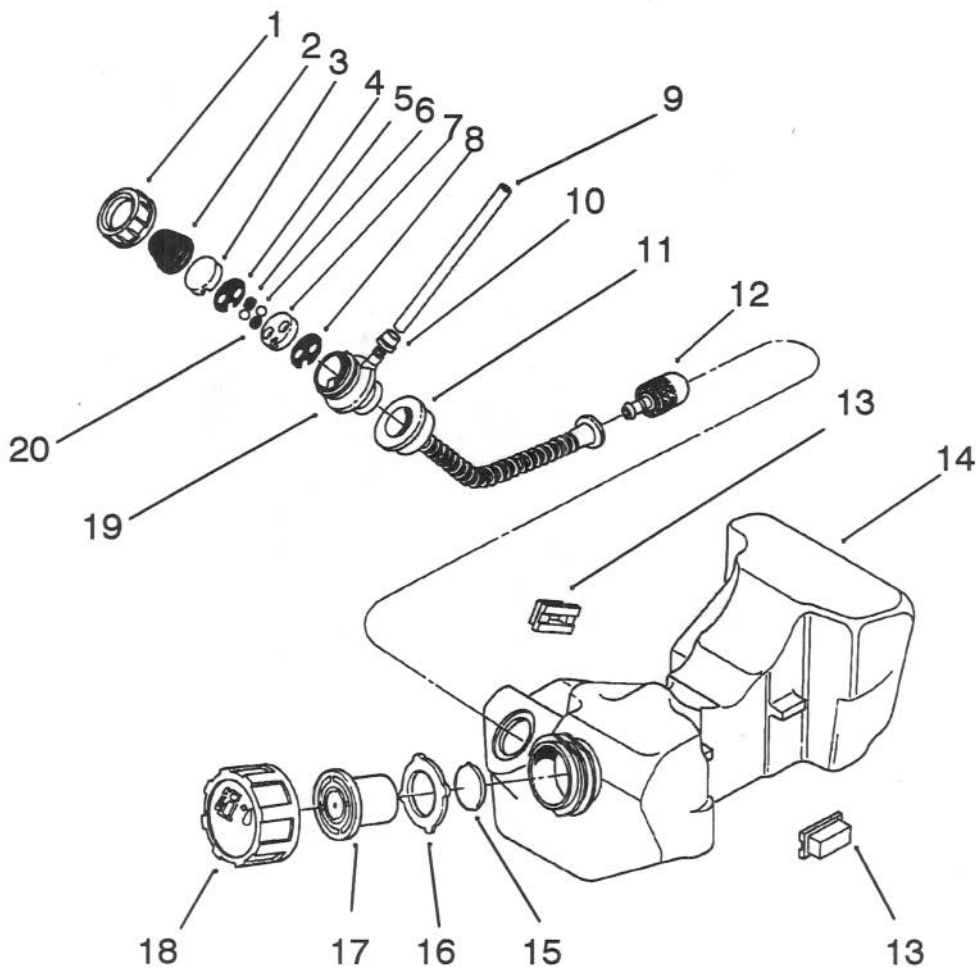
C-0215

ENGINE ASSEMBLY (Continued)

Ref. No.	Part No.	Description	No. Used
1	60-8020	Screw/Washer	2
2	60-8030	Case - Cleaner	1
3	54-5170	Label - Choke	1
4	60-8040	Element	1
5	54-5200	Grid	1
6	54-4870	Screw/Washer	2
7	54-5010	Gasket - Pump	1
8	54-5020	Diaphragm - Pump	1
9	60-7980	Pump Cover Assembly	1
10	54-5040	Screw/Washer	4
11	60-7970	Valve - Throttle	1
12	60-7960	Needle Jet Assembly	1
13	60-7950	Retainer - Spring	1
14	54-5120	Clip - Needle	1
15	54-4920	Spring - Throttle	1
16	54-4910	Cap - Mixing Chamber	1
17	54-4900	Cap - Rubber	1
18	54-6140	Cable - Throttle	1
19	60-7920	Gasket - Insulator	1
20	60-7910	Insulator	1

Ref. No.	Part No.	Description	No. Used
21	60-7930	Screw/Washer	2
22	60-7940	Gasket - Carburetor	1
23	56-9000	Tube - Fuel	1
24	54-4970	Screw - Adjusting	1
25	54-4960	Spring - Adjusting	1
26	54-4980	Jet Main	1
27	54-4990	Spring - Inlet Valve	1
28	54-5110	Screw/Washer	4
29	54-5100	Cover - Diaphragm	1
30	54-5090	Diaphragm	1
31	54-5000	Gasket - Diaphragm	1
32	54-5080	Setscrew	1
33	54-5070	Pin - Float	1
34	54-5060	Arm - Float	1
35	54-5050	Valve - Float	1
36	84-8830	Decal - Fuel Mix	1
*	60-8010	Air Cleaner Assembly (Incl. Ref. #2-5)	1
*	65-2600	Carburetor Assembly (Incl. Ref. # 7-17 & 24-35)	1

*Not Illustrated



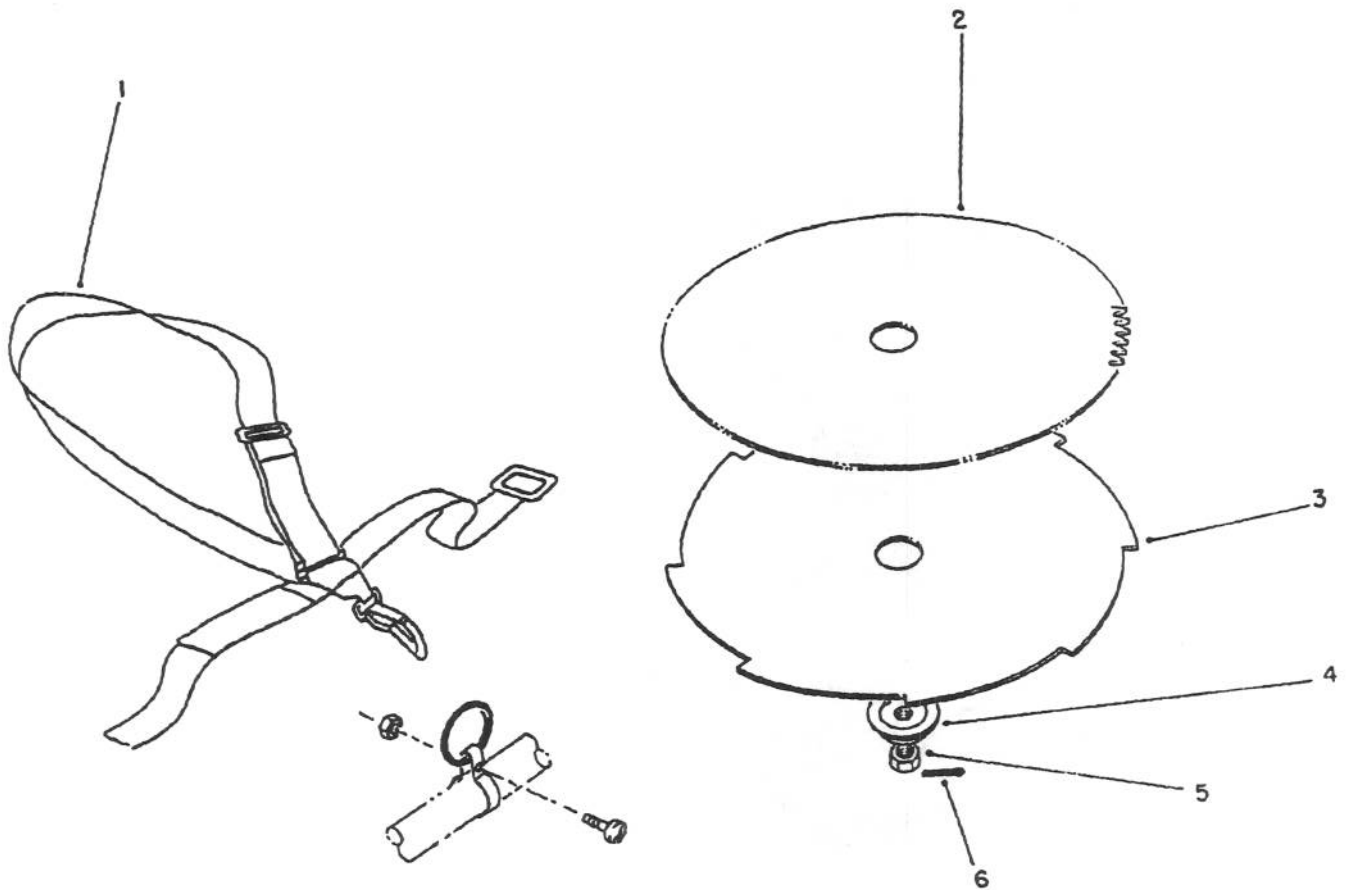
C-1167

ENGINE ASSEMBLY (Continued)

Ref. No.	Part No.	Description	No. Used
1	54-5510	Nut	1
2	54-5520	Cap	1
3	54-5530	Seat-Valve	1
4	54-5460	Gasket	1
5	54-5470	Sponge	1
6	54-5480	Ball	2
7	54-5490	Seat - Valve	1
8	54-5500	Gasket	1
9	54-7040	Tube - Fuel	1
10	54-5550	Clip	1
11	60-8270	Hose - Suction	1
12	54-5540	Filter - Fuel	1
13	60-8280	Pad	4

Ref. No.	Part No.	Description	No. Used
14	88-0140	Fuel Tank Assembly (Incl. Ref. #11, 12 15-18 & 19)	1
15	77-2020	Cap	1
16	77-2010	Packing	1
17	77-2000	Valve - Breather	1
18	77-1990	Cap - Fuel Tank	1
19	54-5570	Pump Priming Assembly (Incl. Ref. # 1-8 & 20)	1
20	60-8260	Cushion Ball	1
*	77-1980	Cap Assembly (Incl. Ref. #15-18)	1

*Not Illustrated



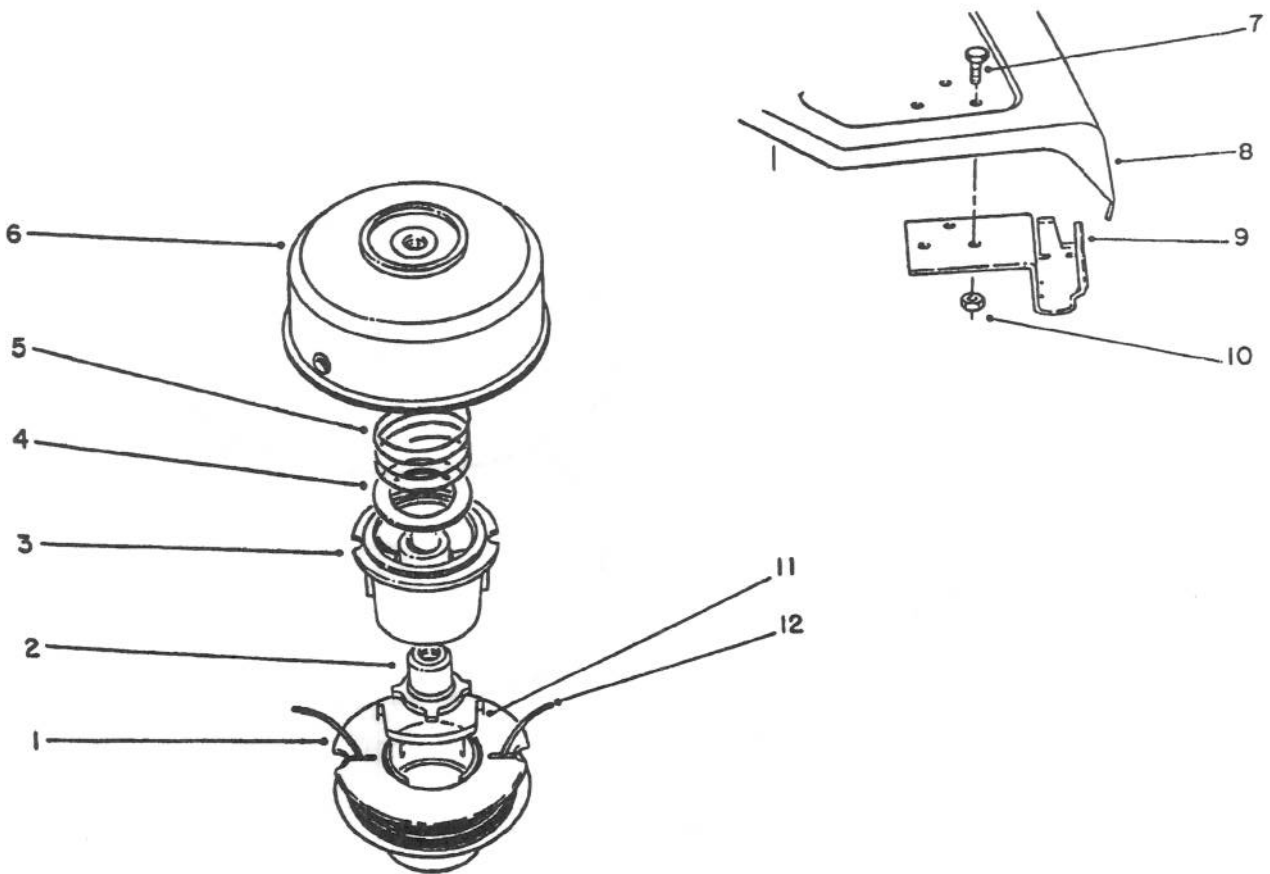
C-1027

BLADE & HARNESS ACCESSORIES (Optional)

Ref. No.	Part No.	Description	No. Used
1	46-2961	Deluxe Harness	1
2	51-1230	8" Dia. Blade Saw (80 Tooth)	1
3	51-1240	8" Dia. Blade Brush (8 Tooth)	1

Ref. No.	Part No.	Description	No. Used
4		Adapter - Blade	1
5	41-5410	Nut L.H.	1
6	3272-3	Pin - Cotter	1
*	41-4440	Blade Adapter Kit (Incl. Ref. #4-6)	1

*Not Illustrated



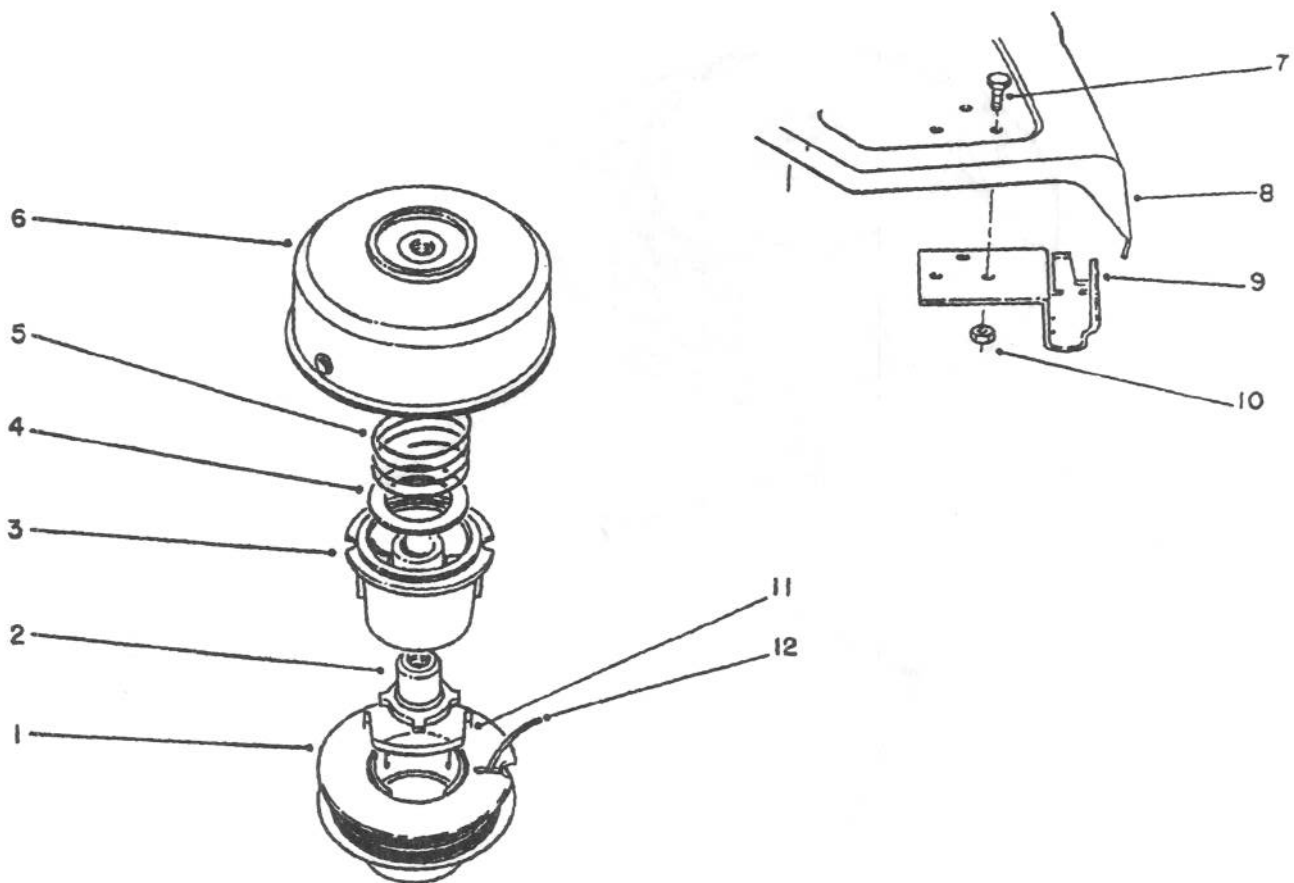
C-1028

DUAL LINE BUMP FEED CUTTER HEAD(OPTIONAL)

Ref. No.	Part No.	Description	No. Used
1	83-4650	Spool Prewound .08 Dia 38' (Incl. Ref. #11 & 12)	1
2	61-4560	Driver L.H.	1
3	33-6230	Spool Core	1
4	3256-42	Washer	1
5	33-6460	Spring	1
6	46-2650	Drum w/Eyelets	1
7	32105-8	Screw (Optional)	3
8	61-4571	Shield (Optional)	1
9	61-4540	Bracket - Knife Blade Ass'y (Optional)	1

Ref. No.	Part No.	Description	No. Used
10	3296-2	Nut (Optional)	1
11	33-8940	Saddle	1
12		Line - Cutting .08 Dia. 38'	1
*	43-5000	Line - Cutting .08 Dia. (38' Optional)	1
*	46-2710	Line - Cutting .08 Dia. (40' Optional)	1
*	83-4610	Cutter Head Assembly (Incl. Ref. #1-6, 11 & 12)	1

* Not Illustrated



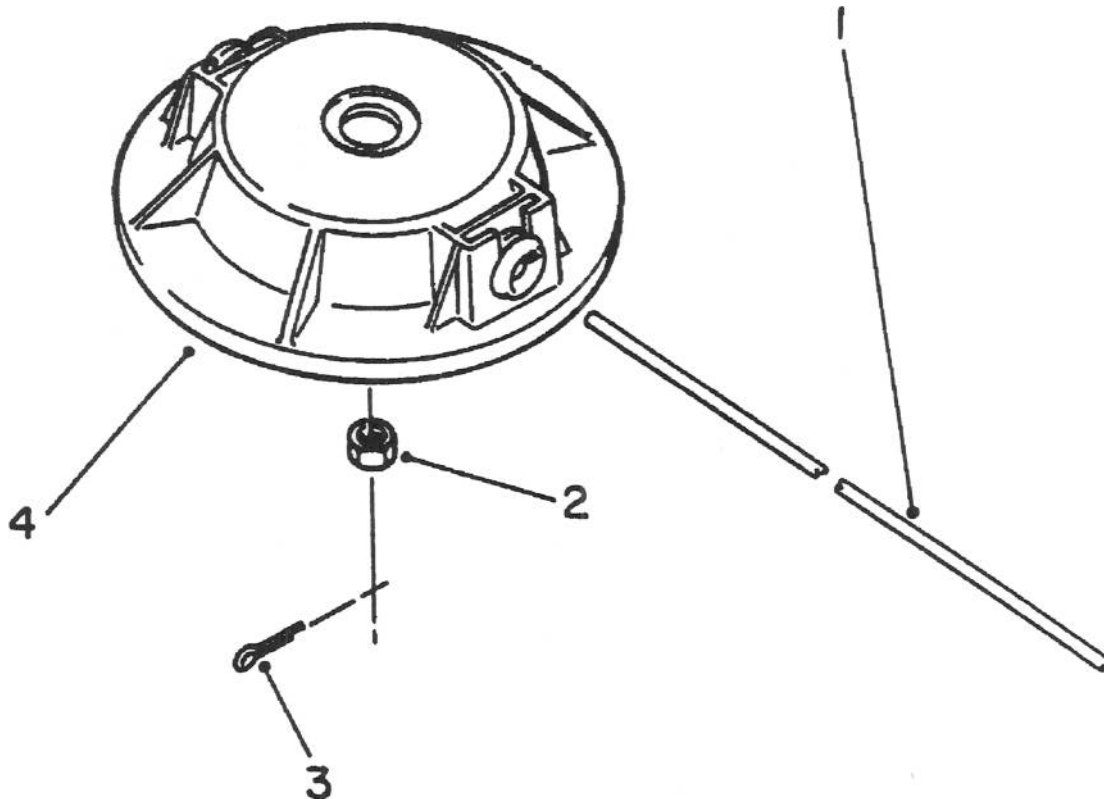
C-1029

SINGLE LINE BUMP FEED CUTTER HEAD (Optional)

Ref. No.	Part No.	Description	No. Used
1	83-4660	Spool Prewound .095 Dia. (30' Incl. Ref. #11)	1
2	61-4560	Driver L.H.	1
3	33-6230	Core - Spool	1
4	3256-42	Washer	1
5	33-6460	Spring	1
6	46-2651	Drum w/Eyelet	1
7	32105-8	Screw (Optional)	3
8	61-4571	Shield (Optional)	1

Ref. No.	Part No.	Description	No. Used
9	61-4540	Bracket - Knife Blade Ass'y (Optional)	1
10	3296-2	Nut (Optional)	3
11	33-8940	Saddle	1
12		Line Cutting .095 Dia. 30'	1
*	41-6820	Line Cutting .095 Dia. (285' Optional)	1
*	83-4600	Cutter Head Assembly (Incl. Ref. #1-8)	1

* Not Illustrated



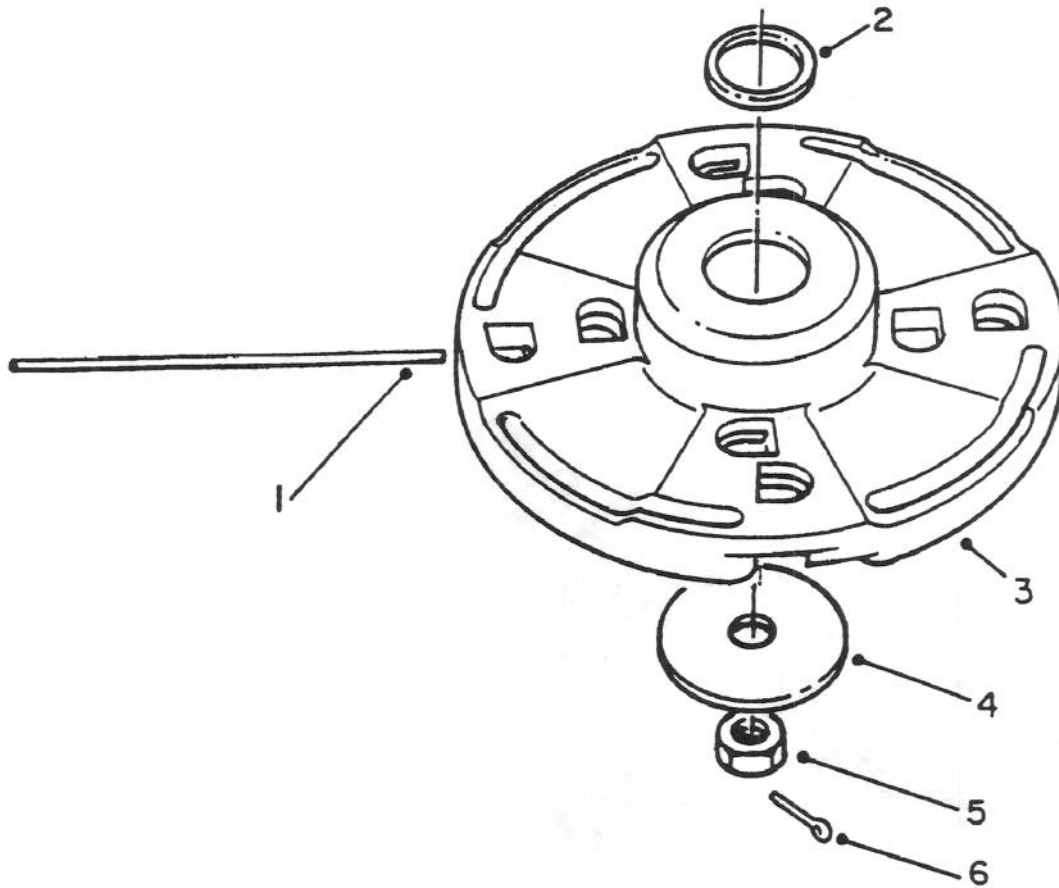
C-0220

NON – METALLIC FIXED LINE CUTTER HEAD (Optional)

Ref. No.	Part No.	Description	No. Used
1		Line – Cutting	1
*	47-2260	Line – Cutting .105 Dia. (16" 100 Pcs. Optional)	1
*	46-2730	Line – Cutting .105 Dia. (235' 1 Lb. Optional)	1

Ref. No.	Part No.	Description	No. Used
*	52-5070	Line – Cutting .105 Dia (20' Optional)	1
2	41-5410	Nut L.H.	1
3	3272-3	Pin – Cotter	1
4	51-2760	Cutter Head Assembly	1

* Not Illustrated



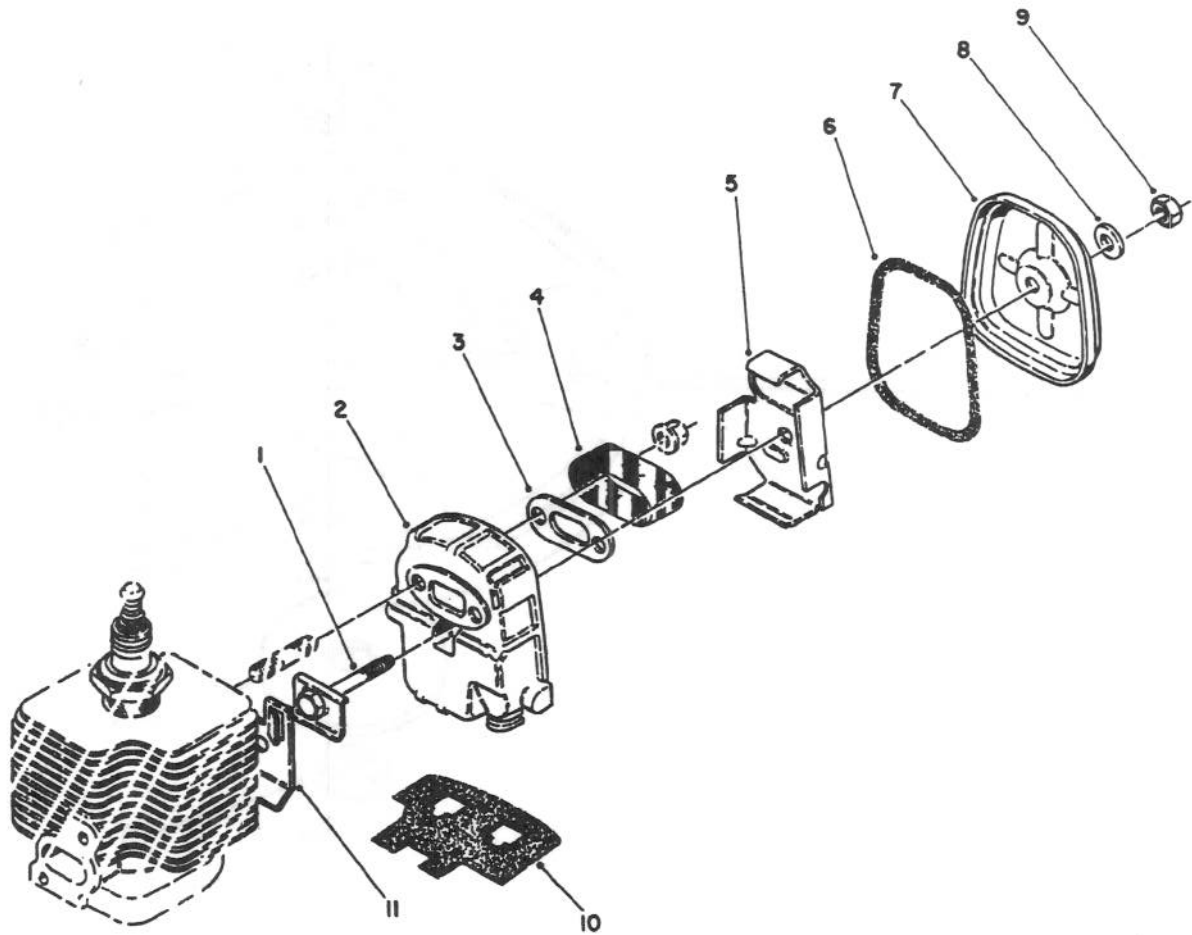
C-0221

METALLIC FIXED LINE CUTTER HEAD (Optional)

Ref. No.	Part No.	Description	No. Used
1		Line - Cutting	1
*	47-2260	Line - Cutting .105 Dia. (100 Pcs. Optional)	1
*	46-2730	Line - Cutting .105 Dia. (235' 1 Lb. Optional)	1
*	52-5070	Line - Cutting .105 Dia. (20' 3 Lb. Optional)	1
*	42-0580	Line - Cutting .13 Dia. (100 Pcs. Optional)	1

Ref. No.	Part No.	Description	No. Used
*	46-2740	Line - Cutting .13 Dia. (465' 3 Lb. Optional)	1
2	44-6950	Spacer	1
3	46-2810	Head Assembly (Incl. Ref.#2)	1
4	41-4430	Washer - Plate	1
5	41-5410	Nut - L.H.	1
6	3272-3	Pin - Cotter	1

* Not Illustrated



C-0222

SPARK ARRESTOR MUFFLER KIT 65-4300 (OPTIONAL)

Ref. No.	Part No.	Description	No. Used
1	65-2630	Bolt - Muffler Body	1
2	65-4320	Body - Muffler	1
3	65-4330	Plate	1
4	65-4340	Screen	1
5	65-4350	Plate	1
6	60-8100	Gasket - Muffler Seal	1

Ref. No.	Part No.	Description	No. Used
7	60-8110	Lid - Muffler	1
8	65-4410	Washer - Gasket	1
9	65-4420	Nut	1
10	65-4360	Gasket	1
11	65-4370	Gasket - Muffler	1

