



18-52ZX TimeCutter™ ZX Riding Mower

Model No. 74702 - 240000001 and up.

Parts Catalog

Ordering Replacement Parts

To order replacement parts, please supply the part number, the quantity, and the description of each part desired.

Understanding Reference Numbers

Each identified part in an illustration has a reference number. The reference number for a part also appears in the parts list, along with other information about the part.

This catalog uses two special reference number formats, one to indicate parts in a service assembly and another to indicate the quantity of a given part in an illustration.

Service Assembly Reference Numbers

Parts in service assemblies have reference numbers in the form a:b. The a represents the reference number of the entire service assembly and the b represents a sequential number unique to each part within the service assembly.

For example, a wheel assembly might be identified by reference number 6, the tire by 6:1, the valve by 6:2, and the wheel by 6:3. When you order the assembly identified by reference number 6, you receive all parts identified by reference numbers 6:1, 6:2, and 6:3. However, you may also order any part individually. Reference numbers of this type appear in illustrations and in part lists.

Reference Numbers Indicating Quantity

In an illustration, if a reference number indicates more than one part, the reference number has the form nX y. The n represents the quantity of the part, the X is the multiplication symbol, and the y represents the reference number.

For example, in an illustration, the reference number 2X 37 means that two of the parts identified by reference number 37 are indicated.

Contents

Description	Page	Description	Page
Front Frame Assembly 3	Oil Pan and Lubrication Assembly Kohler Cv492s-27525 20
Height-of-Cut Handle and Plate Assembly 4	Head, Valve and Breather Assembly Kohler Cv492s-27525 21
Main Frame Assembly 5	Ignition and Electrical Assembly Kohler Cv492s-27525 22
Fuel Tank and Control Pod Assembly 6	Blower Housing and Baffle Assembly Kohler Cv492s-27525 23
Parking Brake Assembly 7	Starter Assembly Kohler Cv492s-27525 24
Motion Control Assembly 8	Fuel System Assembly Kohler Cv492s-27525 25
Hydro and Belt Drive Assembly 9	Engine Control Assembly Kohler Cv492s-27525 26
LH Hydro Transaxle Assembly No. 107-1709 10	Air Intake/Filtration Assembly Kohler Cv492s-27525 27
RH Hydro Transaxle Assembly No. 107-1708 12	Exhaust Assembly Kohler Cv492s-27525 28
Engine and Clutch Assembly 14		
Electrical System Assembly 15		
52in Deck Assembly 16		
52in Deck Belt Drive and Lift System Assembly 17		
Crankshaft Assembly Kohler Cv492s-27525 18		
Crankcase Assembly Kohler Cv492s-27525 19		

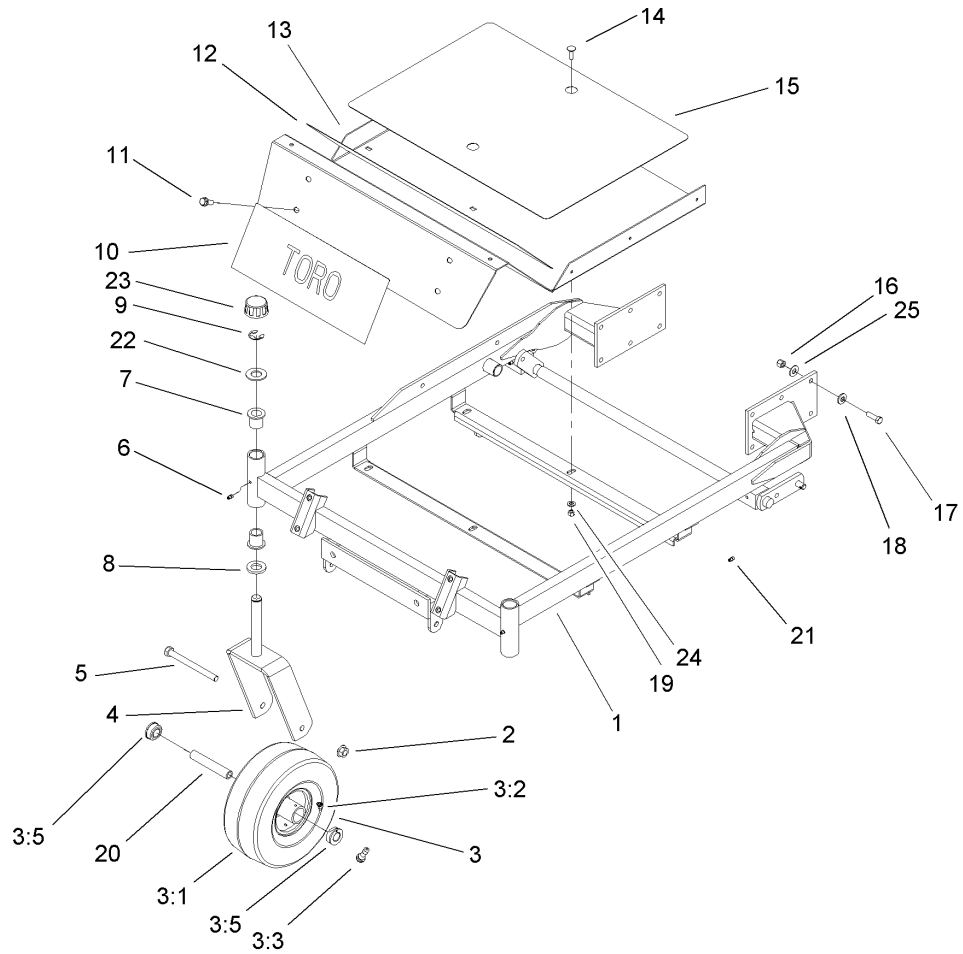
Part Description Abbreviations

Part descriptions in this catalog may include the following abbreviations.

AR. as required	HYD. hydraulic
ASM. assembly	LH. left hand
BBC. blade brake clutch	NI. nylon insert
CARR. carriage	NPTF. national pipe thread fine
DEG. degrees	PFH. phillips flat head
EXT. external	PPH. phillips pan head
FH. flat head	PPHTF. phillips pan head thread forming
GA. gauge	PRH. phillips round head
HD. heavy-duty	PTH. phillips truss head
HF. hex flange	PTO. power-take-off
HH. hex head	RH. right hand
HHF. hex head flange	ROPS. roll-over protection system
HHFTF. hex head flange thread forming	SFH. slotted fillister head
HJ. hex jam	SHH. slotted hex head
HLH. hex lag head	SHWH. slotted hex washer head
HOC. height-of-cut	SPH. slotted pan head
HSBH. hex socket button head	SQH. square head
HSFH. hex socket flat head	SRH. slotted round head
HSH. hex socket head	STD. standard
HWH. hex washer head	TAP. self tapping
HWHTF. hex washer head thread forming	TTH. torx truss head

Footnotes

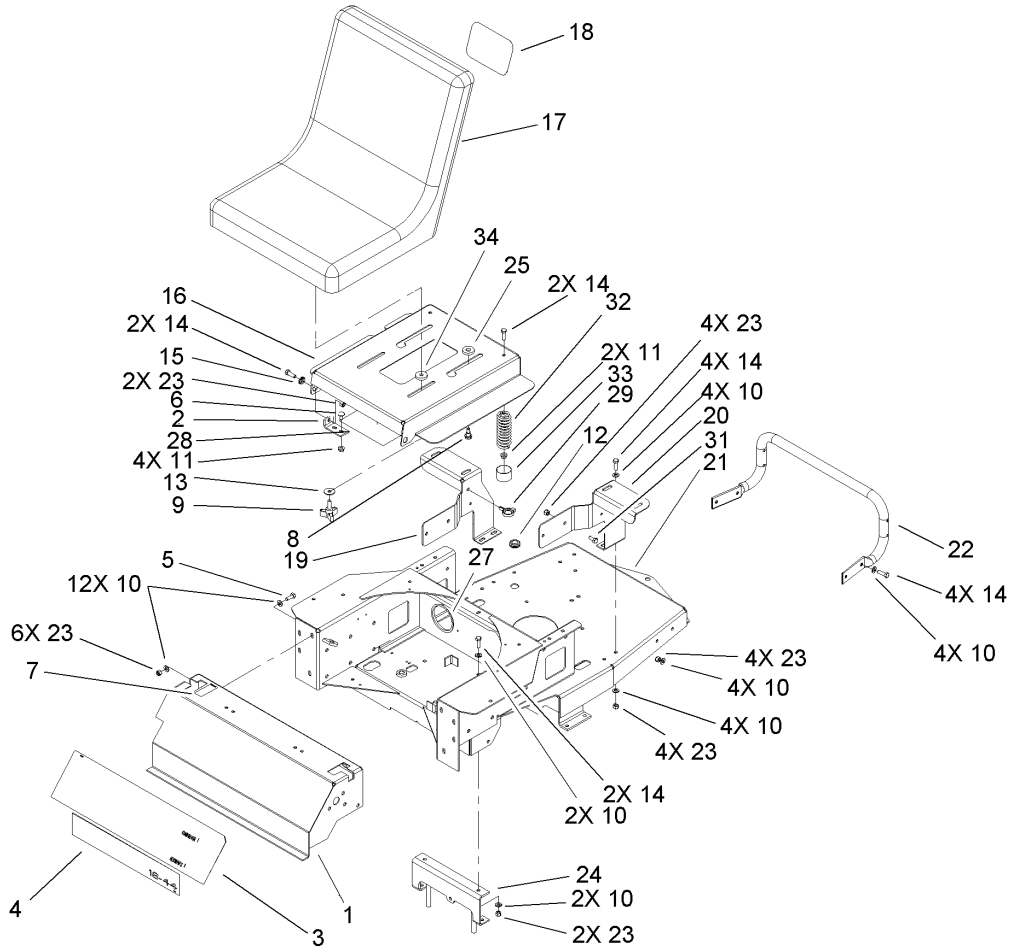
- ❶ Not illustrated
- ❷ Not serviced separately
- ❸ Obtain from your local Kohler dealer



Front Frame Assembly

Ref	Part No.	Qty.	Description
1	100-7357-01	1	Carrier Frame ASM
2	32128-23	2	Nut-HF
3	105-3471	2	Front Wheel And Tire ASM
3:1	105-1943	1	Tire
3:2	302-11	1	Fitting-Lube, 45 DEG
3:3	232-27	1	Stem-Valve
3:5	114-1640	2	Bushing-Flange
①3:99	93-4244	1	Tube-Inner (W/Valve)
4	100-7363-01	2	Caster Fork ASM
5	325-22	2	Screw-HH
6	302-5	2	Fitting-Grease
7	1-303514	4	Bearing-Flanged
8	1-513338	2	Washer-Flat
9	32151-103	2	Ring-Snap
10	67-7320	1	Decal
11	66-9300	4	Screw-HF
12	104-3639	1	Pad-Skid, Anti
13	100-7386-03	1	Floorpan
14	3230-28	6	Screw-CARR
15	104-3640	1	Pad-Skid, Anti
16	3296-39	12	Nut-Lock, NI
17	323-7	12	Screw-HH
18	98-5975	12	Washer-Belleville
19	3296-29	6	Nut-Lock, NI

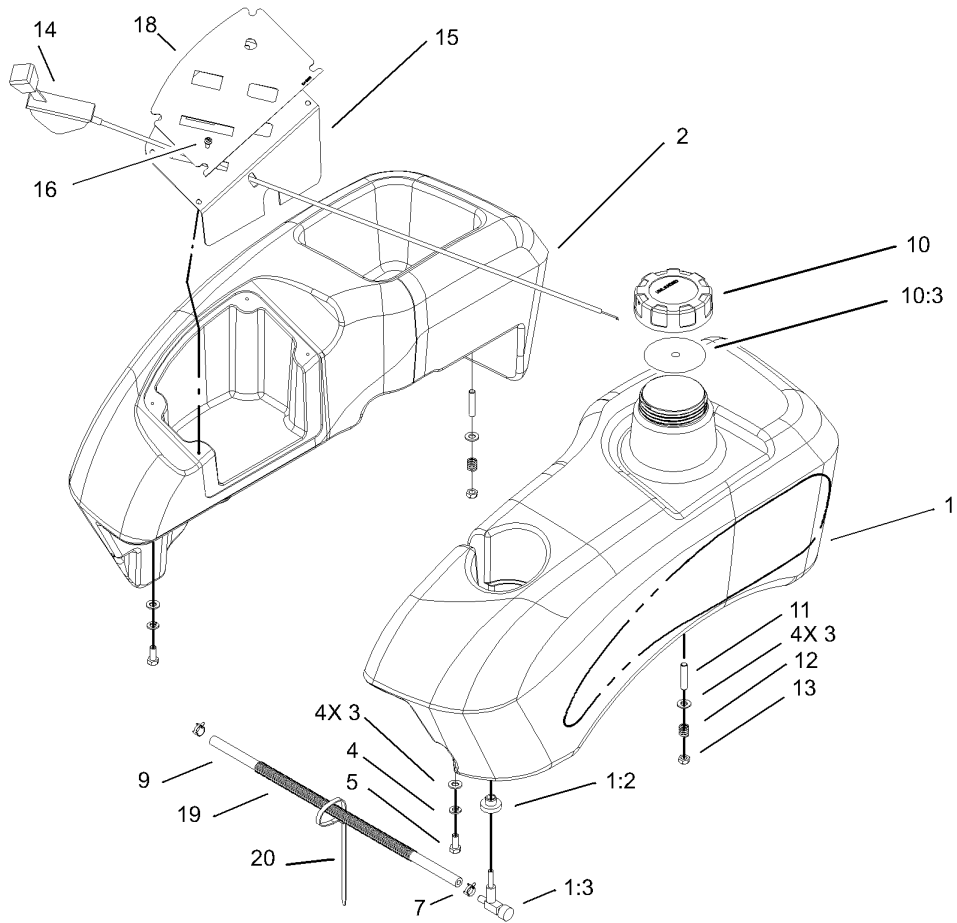
Ref	Part No.	Qty.	Description
20	104-3667	2	Spanner-Wheel
21	302-19	2	Fitting-Grease
22	104-8076	2	Washer
23	61-9780	2	Cap-Hub
24	3256-23	6	Washer-Flat
25	1-809107	12	Washer-Hardened



Main Frame Assembly

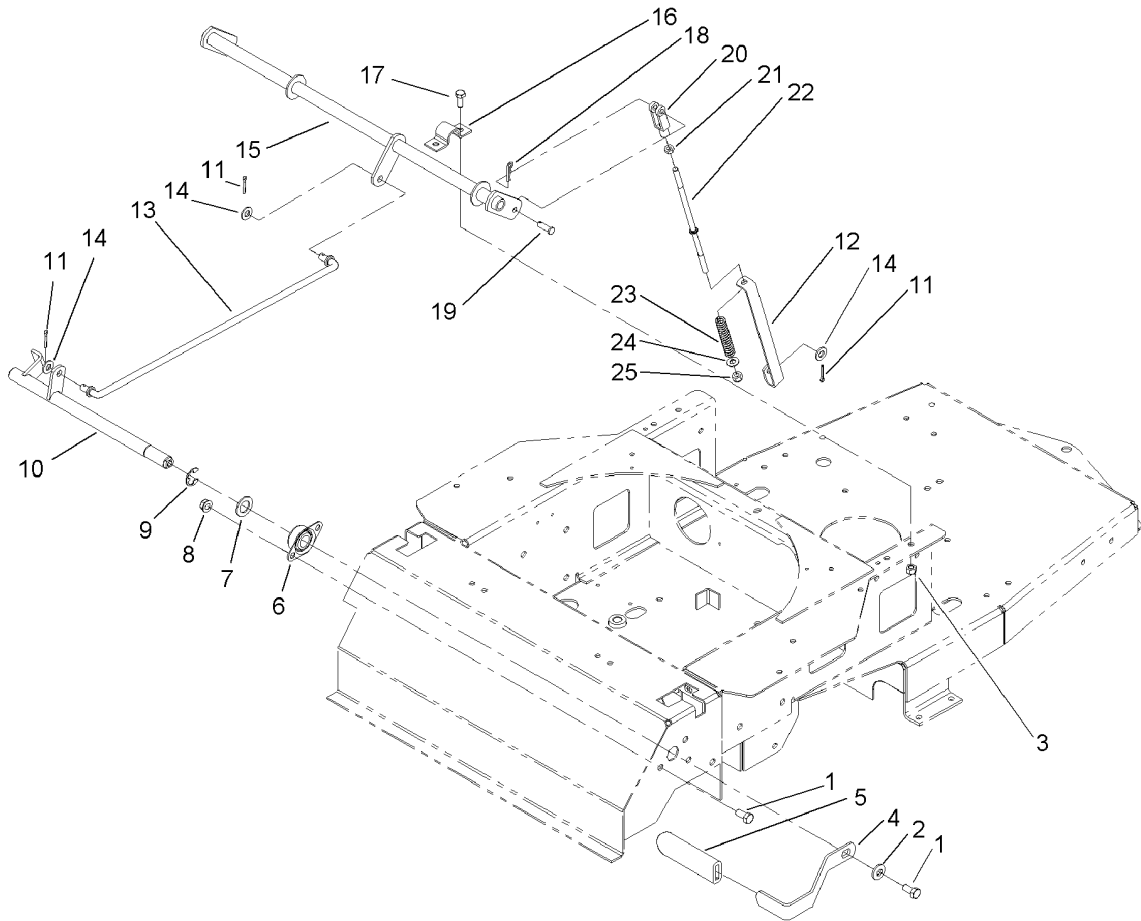
Ref	Part No.	Qty.	Description
1	104-8040-03	1	Console
2	104-8057-03	2	Bracket-Pivot
3	107-7399	1	Decal-Danger
4	106-2208	1	Decal
5	322-4	6	Screw-HH
6	104-8049	4	Screw-CARR
7	1-633354	2	Decal-Control, Motion
8	92-6986	2	Bolt-Shoulder
9	106-2240	2	Knob
10	3256-23	32	Washer-Flat
11	32128-25	6	Nut-HF
12	237-124	1	Grommet
13	5-4460	2	Washer-Pivot
14	322-5	14	Screw-HH
15	105503	2	Bushing
16	104-8058-03	1	Pan-Seat
17	106-2221	1	Seat
18	93-7340	1	Decal
19	100-7376-01	1	Bracket-RH
20	100-7368-01	1	Bracket-LH
21	107-2549-01	1	Frame-Rear
22	100-7332-03	1	Rod-Support, Rear
23	3296-29	22	Nut-Lock, NI
24	105-6987-03	1	Bracket

Ref	Part No.	Qty.	Description
25	92-6750	2	Spacer-Nylon
27	105-1854	1	Cover-Conduit
28	107-2473	1	Decal-Service
29	105-1853	2	Clamp-Hose
31	322-3	4	Screw-HH
32	92-7054	2	Spring-Compression
33	701178	2	Cap-Protector
34	109989	2	Spacer-Nylon



Fuel Tank and Control Pod Assembly

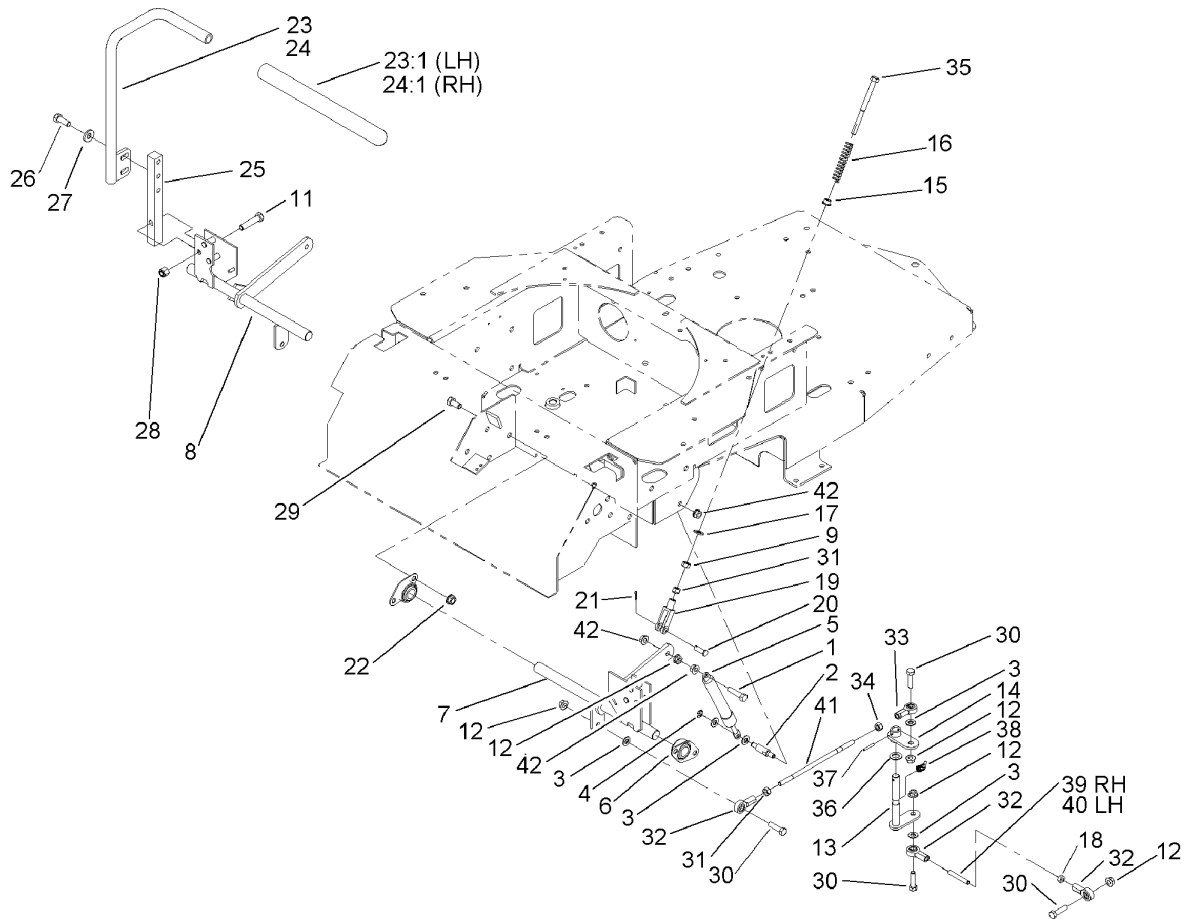
Ref	Part No.	Qty.	Description
1	105-3494	1	Fuel Tank ASM
1:2	46-6560	1	Bushing
1:3	104048	1	Valve-Fuel
2	105-1918	1	Tank-Console
3	3256-23	8	Washer-Flat
4	3253-4	4	Washer-Lock
5	322-3	4	Screw-HH
7	2412-98	2	Clamp
9	104-8010	1	Hose-Fuel
10	88-3980	1	Gas Cap ASM
10:3	88-4010	1	Gasket-Cap, Gas
11	1-633023	4	Stud
12	1-633349	4	Spring-Tank, Fuel
13	3296-47	4	Nut-Lock, NI
14	104-8007	1	Cable-Throttle
15	104-3664-03	1	Panel-Control
16	3250-14	4	Screw-PPH
18	104-8009	1	Decal-Panel, Control
19	105-1854	1	Cover-Conduit
20	614249	1	Strap-Tie



Parking Brake Assembly

Ref	Part No.	Qty.	Description
1	323-4	5	Screw-HH
2	98-5975	1	Washer-Belleville
3	3296-29	4	Nut-Lock, NI
4	100-7346-03	1	Handle-Brake, Park
5	1-633268	1	Grip-Lever, Brake
6	1-633102	2	Bearing-Flange, Side
7	1-303007	1	Washer
8	3290-357	4	Nut-HHF, Whiz
9	32151-48	1	E-Ring
10	100-7318	1	Brake Shaft ASM
11	3272-10	4	Pin-Cotter
12	104-3675	2	Bracket-Spring, Brake
13	104-8046	1	Rod-Brake, Upper
14	3256-24	4	Washer-Flat
15	104-3670-03	1	Shaft-Brake
16	88-4730	2	Clamp-Pivot, HOC
17	322-3	4	Screw-HH
18	1-806003	2	Pin-Hair
19	1-808280	2	Pin-Clevis
20	1-303105	2	Yoke-Adjustable
21	3219-2	2	Nut-Hex
22	104-3674	2	Rod-Brake, Upper
23	38-4520	2	Spring
24	3256-23	2	Washer-Flat

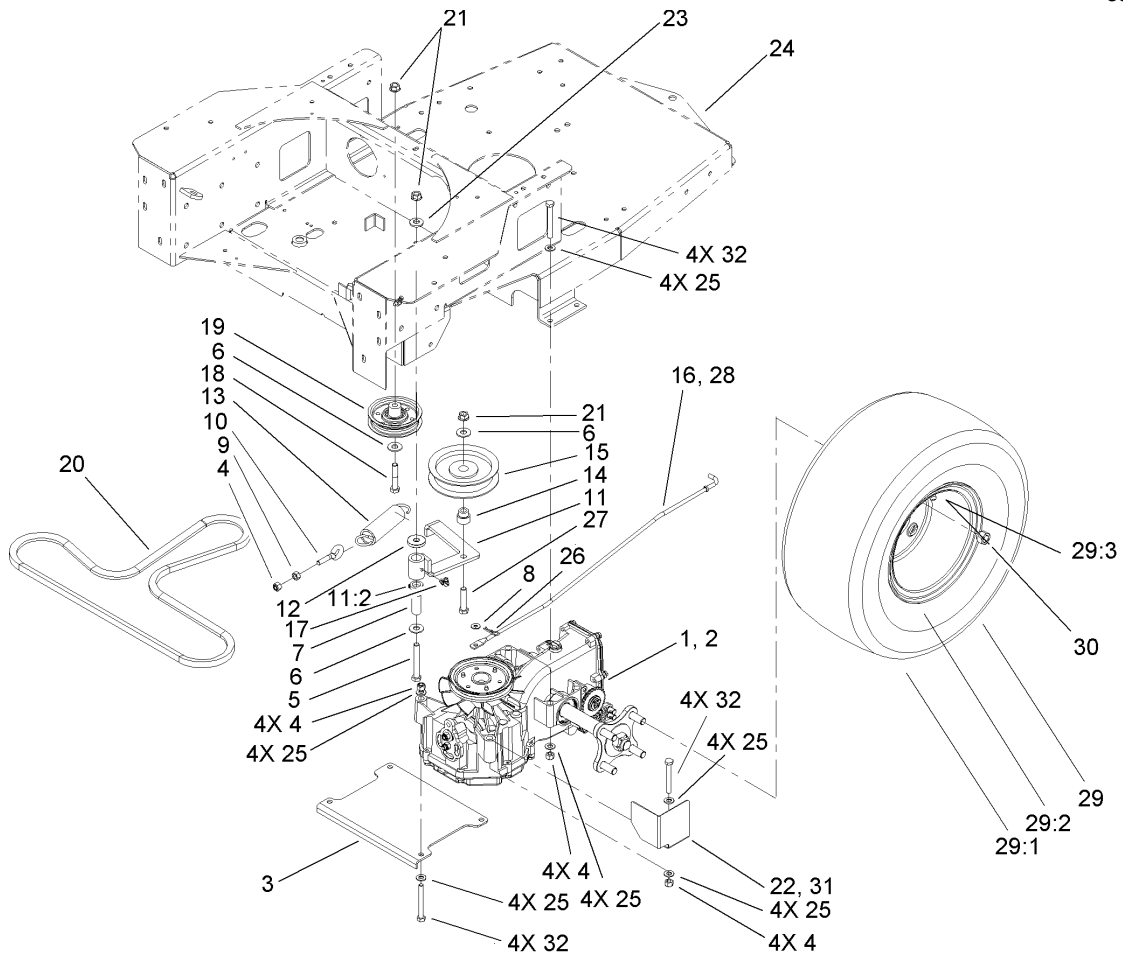
Ref	Part No.	Qty.	Description
25	3296-4	2	Nut-Lock



Motion Control Assembly

Ref	Part No.	Qty.	Description
1	1-403180	2	Screw-HH
2	1-653316	2	Pin-Damper
3	3256-23	10	Washer-Flat
4	32120-35	2	Ring-Retaining, EXT
5	103-2913	2	Damper-Control, Motion
6	1-633102	4	Bearing-Flange, Side
7	100-7341	1	Bracket-Motion Control, LH
8	100-7340	1	Bracket-Motion Control, RH
9	3296-4	2	Nut-Lock
11	323-9	2	Screw-HH
12	32128-20	10	Nut-HF
13	100-7311	2	Pivot ASM
14	100-7313	2	Pivot Plate ASM
15	1-603735	2	Bushing-Flanged
16	1-603807	2	Spring-Return, Neutral
17	3256-2	2	Washer-Flat
18	3220-2	2	Nut-Jam
19	1-303105	2	Yoke-Adjustable
20	1-808280	2	Pin-Clevis
21	3272-5	2	Pin-Cotter
22	3290-357	6	Nut-HHF, Whiz
23	103-0631	1	LH Lever ASM
23:1	1-633257	1	Grip-Control, Motion
24	103-0632	1	RH Lever ASM

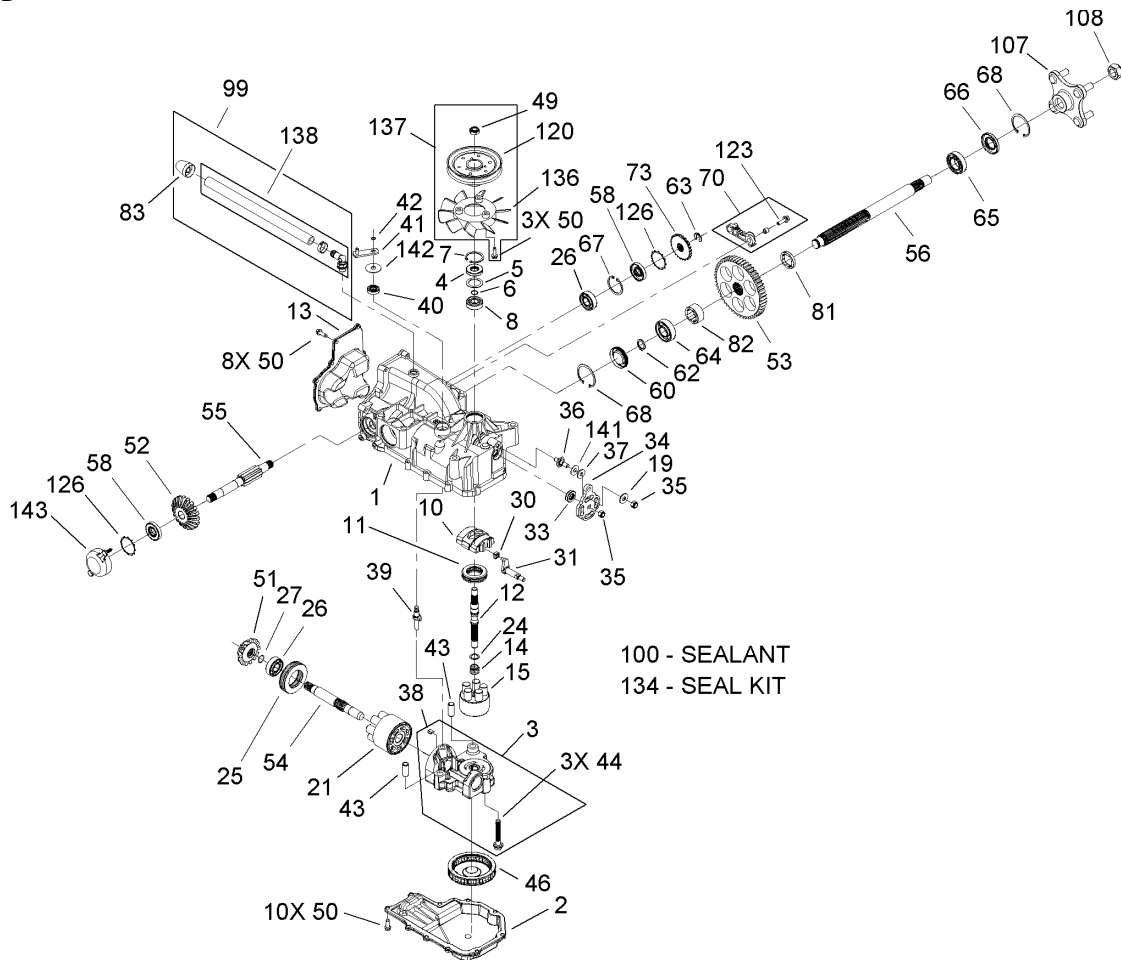
Ref	Part No.	Qty.	Description
24:1	1-633257	1	Grip-Control, Motion
25	103-0407	2	Arm-Shaft, Control
26	323-6	4	Screw-HH
27	98-5975	4	Washer-Belleville
28	3296-39	2	Nut-Lock, NI
29	323-4	6	Screw-HH
30	322-5	8	Screw-HH
31	3219-2	4	Nut-Hex
32	1-543017	6	Balljoint-RH
33	1-633152	2	Balljoint-LH
34	1-804524	2	Nut
35	1-603737	2	Bolt-Return, Neutral
36	100-7336	2	Washer
37	933156	2	Pin-Roll
38	302-11	2	Fitting-Lube, 45 DEG
39	104-3606	1	Linkage-Lower, RH
40	104-3607	1	Linkage-Lower, LH
41	104-3605	2	Linkage-Upper
42	32128-25	6	Nut-HF



Hydro and Belt Drive Assembly

Ref	Part No.	Qty.	Description
1	107-1709	1	Hydro-LH
2	107-1708	1	Hydro-RH
3	100-7317-03	1	Plate-Hydro, Lower
4	3296-29	13	Nut-Lock, NI
5	323-13	1	Screw-HH
6	3256-4	3	Washer-Flat
7	1-603044	1	Bushing
8	3256-1	2	Washer-Flat
9	32128-20	1	Nut-HF
10	55-9420	1	Bolt-Eye
11	104-3614	1	Idler Arm ASM
11:2	1-513034	2	Sleeve-Bearing
12	104-8005	1	Spacer
13	1-603414	1	Spring-Extension
14	1-603496	1	Bushing-Idler
15	1-603843	1	Pulley-Idler
16	104-3668	1	Rod-RH
17	302-40	1	Fitting-Grease
18	323-10	1	Screw-HH
19	104-3630	1	Pulley-Idler
20	104-3622	1	Belt-V
21	32128-21	3	Nut-HF
22	104-8033-03	1	Guard-Fan, LH
23	98-5975	1	Washer-Belleville

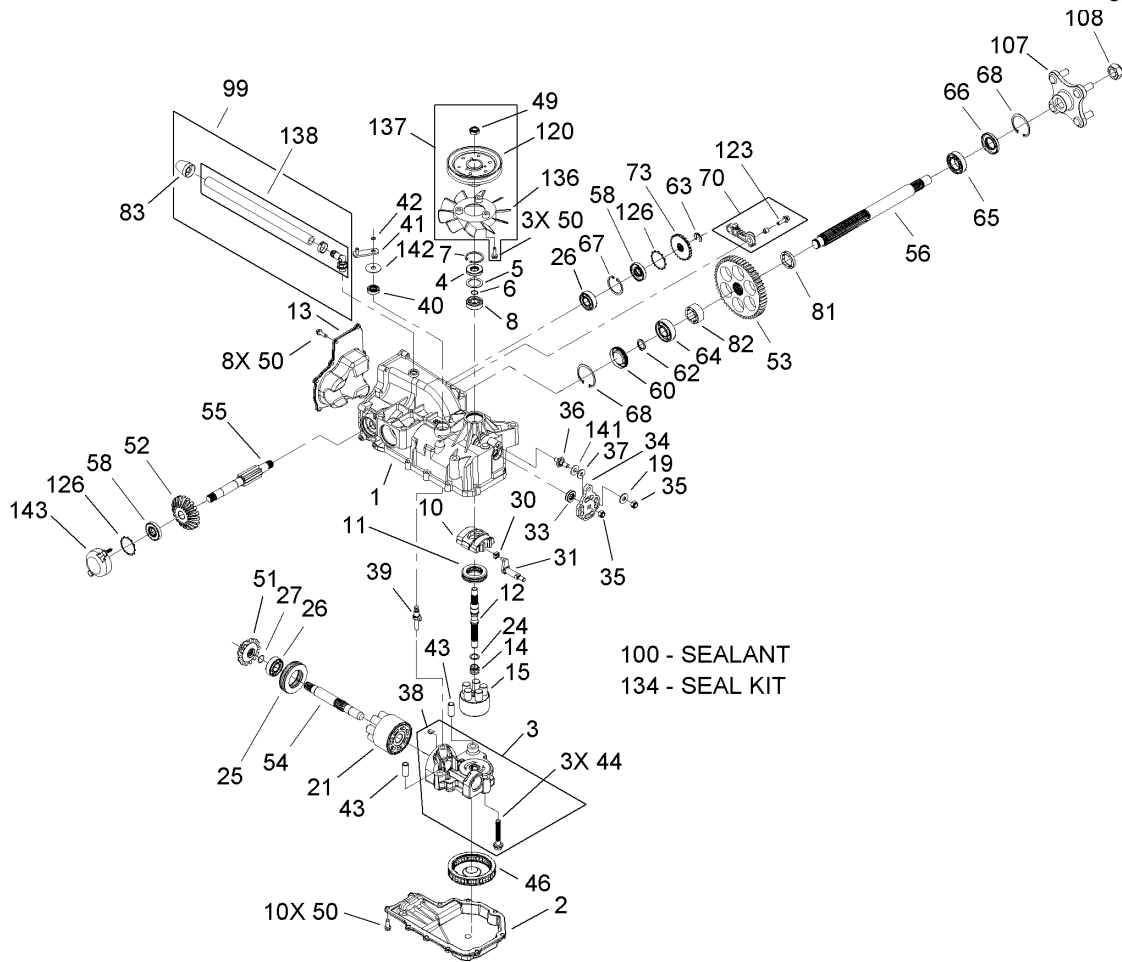
Ref	Part No.	Qty.	Description
24	104-8008	1	Decal-Transport
25	3256-23	24	Washer-Flat
26	1-806003	2	Pin-Hair
27	323-9	1	Screw-HH
28	104-3669	1	Rod-LH
29		2	Wheel And Tire ASM
29:1	105-1945	1	Tire
29:2	105-1947	1	Wheel
29:3	232-27	1	Stem-Valve
29:4	105-4070	1	Tube-Inner
30	242-50	8	Nut-Lug
31	104-8013-03	1	Guard-Fan, RH
32	322-13	12	Screw-HH



LH Hydro Transaxle Assembly No. 107-1709

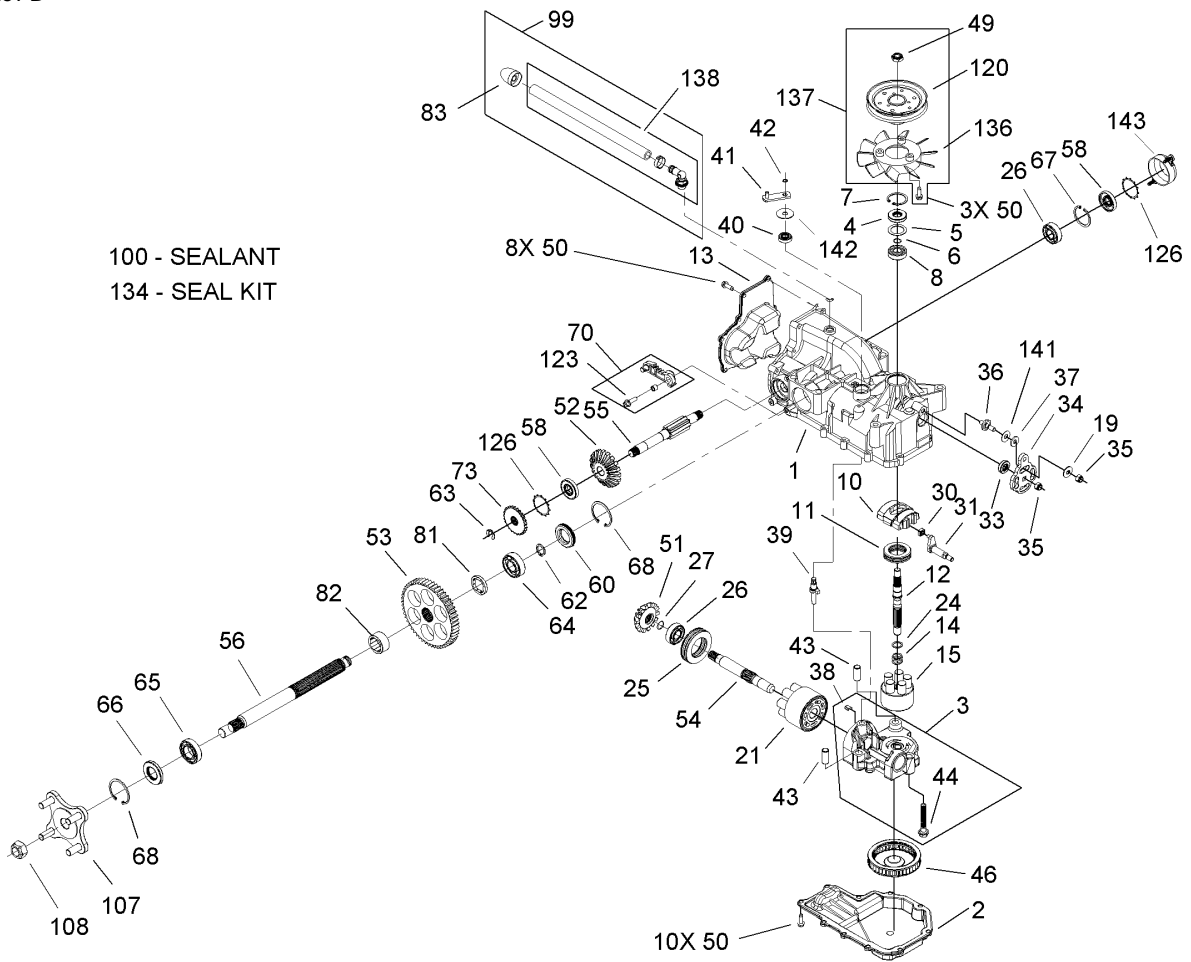
Ref	Part No.	Qty.	Description
1	107-1700	1	Main Housing Kit
2	105-1868	1	Housing-Lower
3	105-1869	1	Center Section Kit ASM
4	92-6543	1	Seal-Lip
5	104-2104	1	Spacer
6	94-1902	1	Ring-Wire, Retaining
7	94-1903	1	Ring-Retaining
8	94-1904	1	Bearing-Shaft, Ball
10	94-1907	1	Swashplate-Variable
11	94-6922	1	Bearing-Thrust
12	104-5067	1	Shaft-Input
13	105-1870	1	Cover-Back
14	94-1936	1	Spring-Block
15	104-2106	1	Cylinder Block ASM
19	5-4460	1	Washer-Pivot
21	94-1913	1	Cylinder Block ASM
24	94-1937	1	Washer-Block, Thrust
25	94-6923	1	Bearing-Thrust
26	104-5311	2	Bearing-Ball
27	104-5307	1	Ring-Retaining
30	94-1910	1	Guide-Slot
31	104-2112	1	Trunnion ASM
33	92-6544	1	Seal-Lip
34	105-1871	1	Arm-Control

Ref	Part No.	Qty.	Description
35	105-1872	2	Nut
36	104-2116	1	Stud
37	105-1873	1	Puck-Friction
38	94-6925	1	Plate-Bypass
39	94-1914	1	Actuator-Bypass
40	92-6545	1	Seal-Lip
41	104-2117	1	Arm-Bypass
42	936109	1	Ring-Retaining
43	94-1927	2	Pin
44	94-6926	3	Bolt
46	105-1874	1	Filter
49	105-1875	1	Nut-Lock
50	104-2120	21	Screw
51	105-1876	1	Gear-Bevel, 14T
52	105-1877	1	Gear-Bevel, 19T
53	105-1878	1	Gear-Bevel, 53T
54	105-1879	1	Shaft-Motor
55	105-1880	1	Shaft-Brake
56	105-1881	1	Shaft-Axle
58	104-5310	2	Seal-Lip
60	105-1882	1	Plug-Side Seal
62	105-1883	1	Ring-Axle, Retaining
63	105-1884	1	Ring-Retaining
64	105-1885	1	Bearing-Ball



LH Hydro Transaxle Assembly No. 107-1709 (continued)

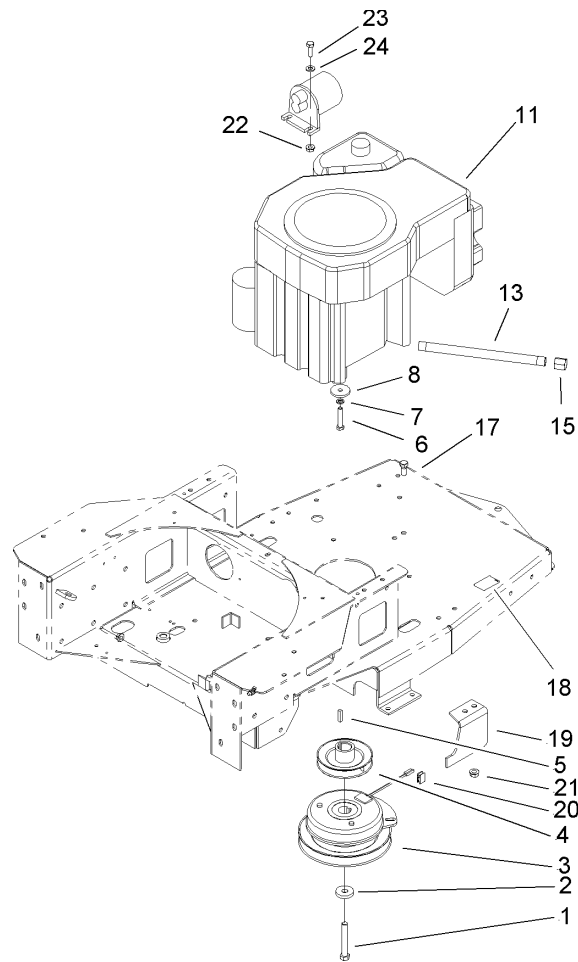
Ref	Part No.	Qty.	Description
65	105-1886	1	Bearing-Ball
66	105-1887	1	Seal
67	104-5309	1	Ring-Retaining
68	105-1888	2	Ring-Retaining, Axle
70	105-1889	1	LH Brake Arm ASM
73	105-1890	1	Disc-Brake
81	105-1891	1	Bushing-Axle
82	105-1892	1	Bushing-Axle
83	107-1701	1	Cap Vent ASM
99	107-1702	1	Breather Kit
●100	104-2147	1	Sealant
107	105-1894	1	Hub ASM
108	105-1895	1	Nut
120	104-1754	1	Pulley
123	107-1703	1	Screw-HHF
126	105-1898	2	Ring-Retaining
●134	105-1899	1	Seal Kit
136	105-1927	1	Fan
137	105-1928	1	Fan Pulley Kit
138	107-1704	1	Hose/Fitting ASM
141	107-1705	1	Washer
142	107-1706	1	Washer
143	107-1707	1	Cover-Brake, Plastic



RH Hydro Transaxle Assembly No. 107-1708

Ref	Part No.	Qty.	Description
1	107-1700	1	Main Housing Kit
2	105-1868	1	Housing-Lower
3	105-1869	1	Center Section Kit ASM
4	92-6543	1	Seal-Lip
5	104-2104	1	Spacer
6	94-1902	1	Ring-Wire, Retaining
7	94-1903	1	Ring-Retaining
8	94-1904	1	Bearing-Shaft, Ball
10	94-1907	1	Swashplate-Variable
11	94-6922	1	Bearing-Thrust
12	104-5067	1	Shaft-Input
13	105-1870	1	Cover-Back
14	94-1936	1	Spring-Block
15	104-2106	1	Cylinder Block ASM
19	5-4460	1	Washer-Pivot
21	94-1913	1	Cylinder Block ASM
24	94-1937	1	Washer-Block, Thrust
25	94-6923	1	Bearing-Thrust
26	104-5311	2	Bearing-Ball
27	104-5307	1	Ring-Retaining
30	94-1910	1	Guide-Slot
31	104-2112	1	Trunnion ASM
33	92-6544	1	Seal-Lip
34	105-1871	1	Arm-Control

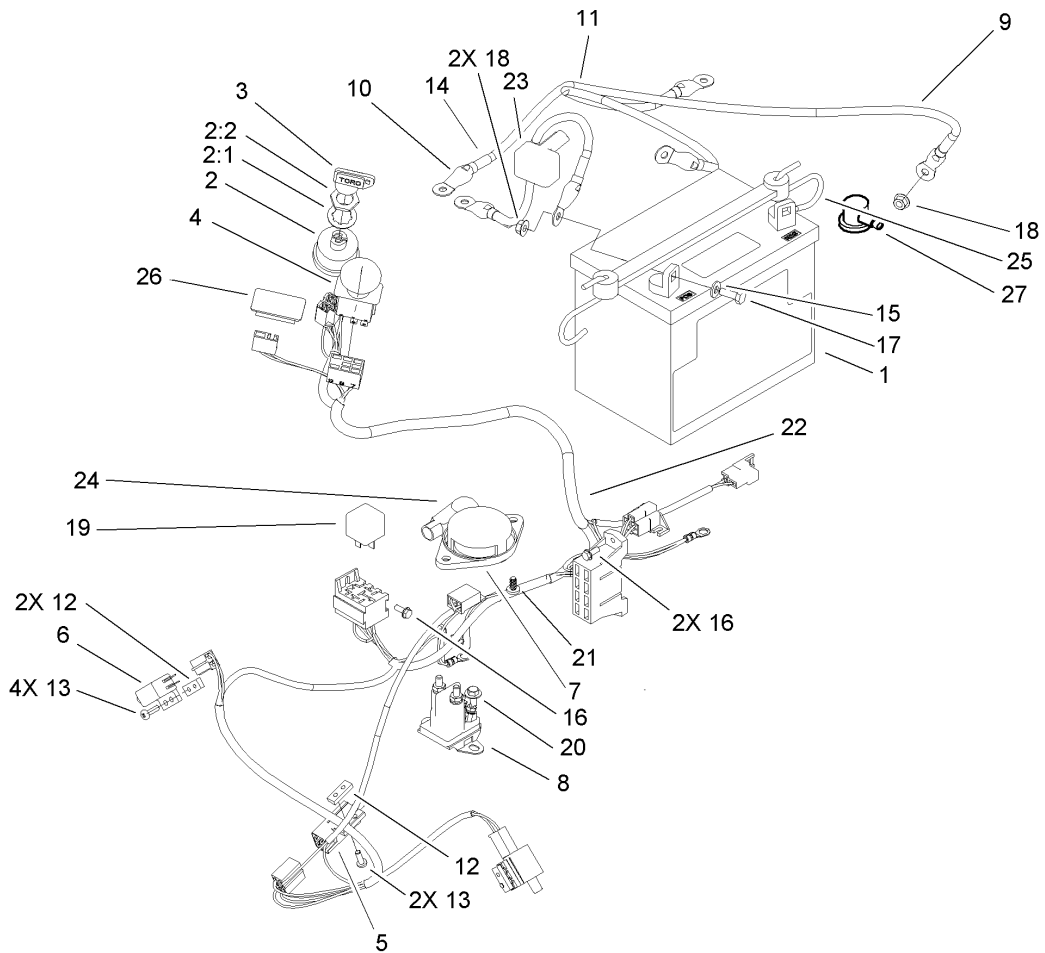
Ref	Part No.	Qty.	Description
35	105-1872	2	Nut
36	104-2116	1	Stud
37	105-1873	1	Puck-Friction
38	94-6925	1	Plate-Bypass
39	94-1914	1	Actuator-Bypass
40	92-6545	1	Seal-Lip
41	104-2117	1	Arm-Bypass
42	936109	1	Ring-Retaining
43	94-1927	2	Pin
44	94-6926	3	Bolt
46	105-1874	1	Filter
49	105-1875	1	Nut-Lock
50	104-2120	21	Screw
51	105-1876	1	Gear-Bevel, 14T
52	105-1877	1	Gear-Bevel, 19T
53	105-1878	1	Gear-Bevel, 53T
54	105-1879	1	Shaft-Motor
55	105-1880	1	Shaft-Brake
56	105-1881	1	Shaft-Axle
58	104-5310	2	Seal-Lip
60	105-1882	1	Plug-Side Seal
62	105-1883	1	Ring-Axle, Retaining
63	105-1884	1	Ring-Retaining
64	105-1885	1	Bearing-Ball



Engine and Clutch Assembly

Ref	Part No.	Qty.	Description
1	3212-12	1	Screw-HH
2	112843	1	Washer
3	104-3624	1	Clutch
4	100-7314	1	Pump Drive Pulley ASM
5	5-7280	1	Key
6	33114-030	4	Screw-HH
7	3253-4	4	Washer-Lock
8	62-7190	4	Spacer-Steel
11		1	Engine-Kohler, Cv492S-27525
13	104-8018	1	Nipple-Pipe
15	288-10	1	Cap-Pipe
17	323-4	2	Screw-HH
18	106-0699	1	Decal-Warning
19	104-3613-03	1	Stop-Clutch
20	98-5023	1	Bumper
21	32128-21	2	Nut-HF
22	32128-25	2	Nut-HF
23	322-5	2	Screw-HH
24	3256-23	2	Washer-Flat

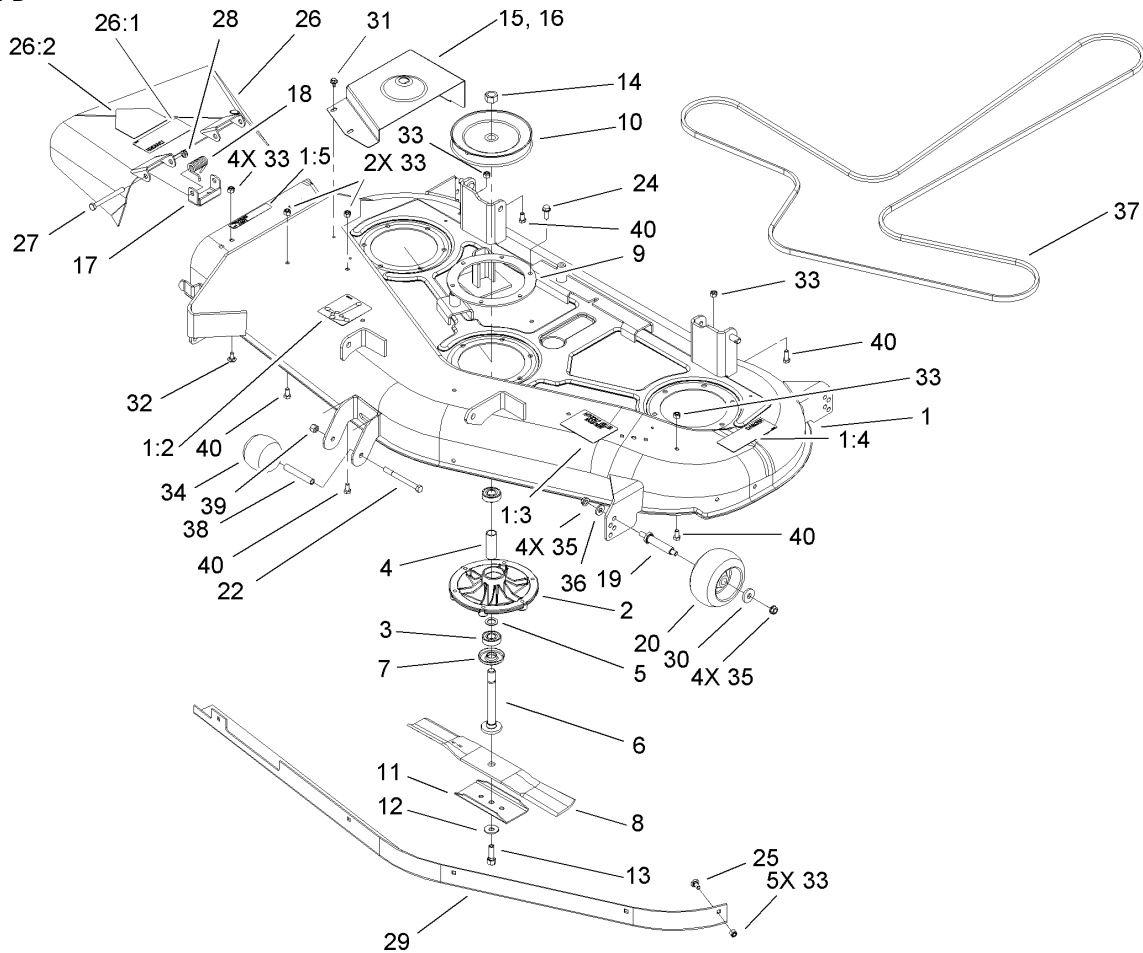
--	--	--	--



Electrical System Assembly

Ref	Part No.	Qty.	Description
1	104-2491	1	Battery-Dry
2	88-9830	1	Key Switch ASM
2:1	3254-5	1	Washer-Tooth
2:2	218-461	1	Nut-HH
3	63-8360	1	Key-Ignition
4	95-7489	1	Switch-PTO
5	86-4690	1	Switch-Interlock
6	65-7410	2	Switch-Pole, Single
7	105-6959	1	Switch-Seat
8	106-8245	1	Solenoid
9	56-7670	1	Wire ASM
10	106-8269	1	Cable-Battery, Red
11	93-0324	1	Cable
12	1-633181	3	Plate-Tapped
13	32144-8	6	Screw-PPHTF
14	32149-2	2	Nut-Keps
15	3256-22	2	Washer-Flat
16	32144-1	3	Screw-Taptite
17	321-4	2	Screw-HH
18	32128-33	3	Nut-HF
19	98-7249	1	Relay
20	46-8560	2	Screw-HHF
21	105-6968	2	Screw-Seat, Switch
22	107-2503	1	Harness-Wire, Kohler,15Amp

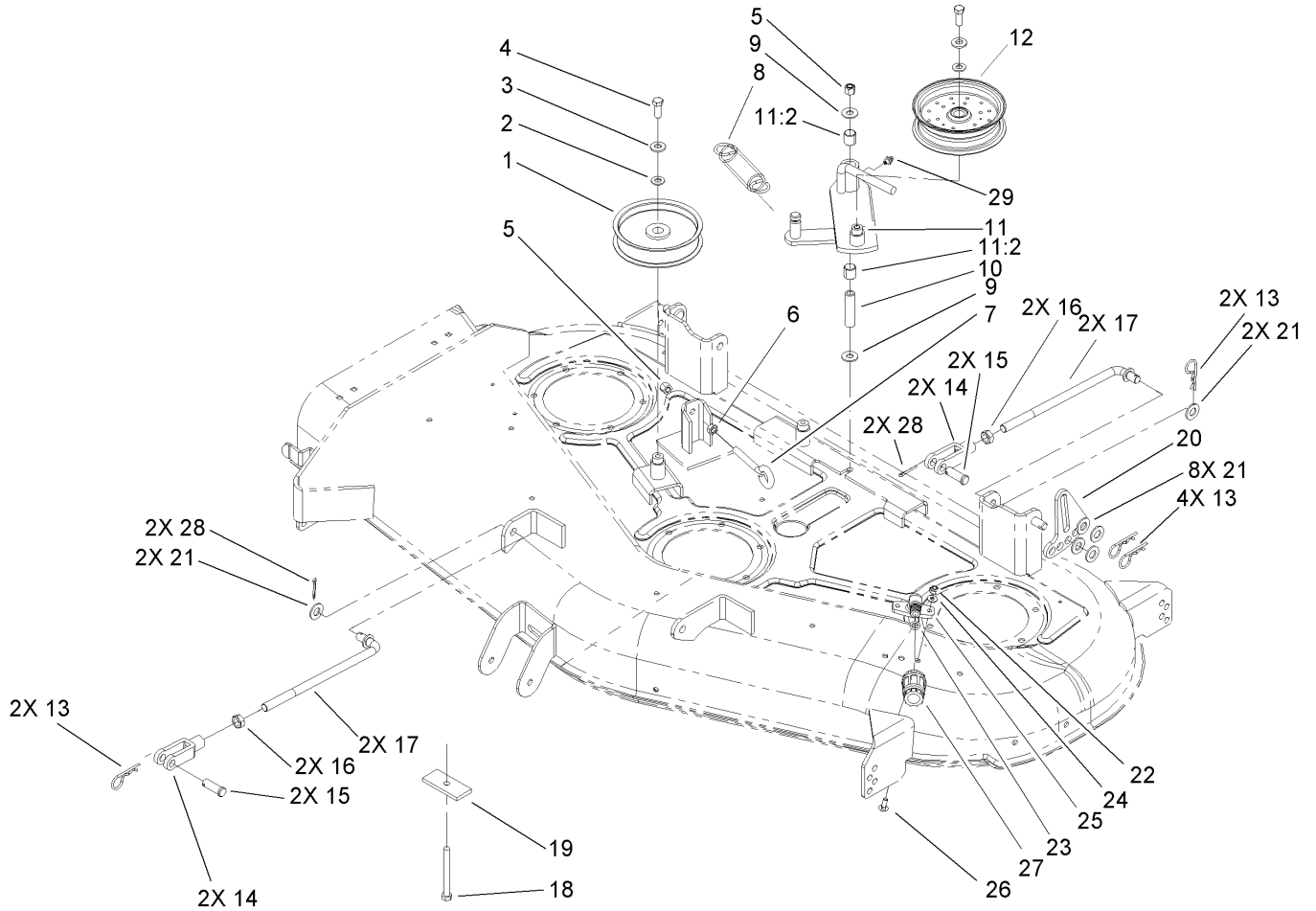
Ref	Part No.	Qty.	Description
23	28-8080	1	Boot-Terminal
24	93-3190	1	Boot-Insulator, Terminal
25	104-2466	1	Holddown-Battery
26	99-7420	1	Plug-Hole
27	94-5362	1	Boot-Terminal Insulator



52in Deck Assembly

Ref	Part No.	Qty.	Description
1	106-7000	1	Deck ASM
1:2	99-3943	1	Decal-Routing, Belt
1:3	98-3798	1	Decal-Wheel, Gage
1:4	92-7108	1	Decal-Danger
1:5	92-7109	1	Decal-Caution
2	107-1739	3	Housing-Spindle
3	100-1048	6	Bearing-Ball
4	62-3661	3	Spacer-Bearing
5	80-4380	3	Spacer
6	80-4341	3	Shaft
7	80-4360	3	Shield-Bearing
8	107-1741-03	3	Blade
9	107-1743-03	3	Ring-Support, Deck
10	107-1740	3	Pulley And Hub ASM
11	80-0510-03	3	Stiffener-Blade
12	3290-465	3	Washer-Belleville
13	26-0671	3	Screw-Blade
14	3219-6	3	Nut-Hex
15	104-3685-01	1	Cover-Belt, LH
16	104-3684-01	1	Cover-Belt, RH
17	29-5590-03	2	Bracket-Pivot
18	40-6230	2	Spring
19	99-2842	4	Spacer
20	68-2730	4	Wheel-Gage

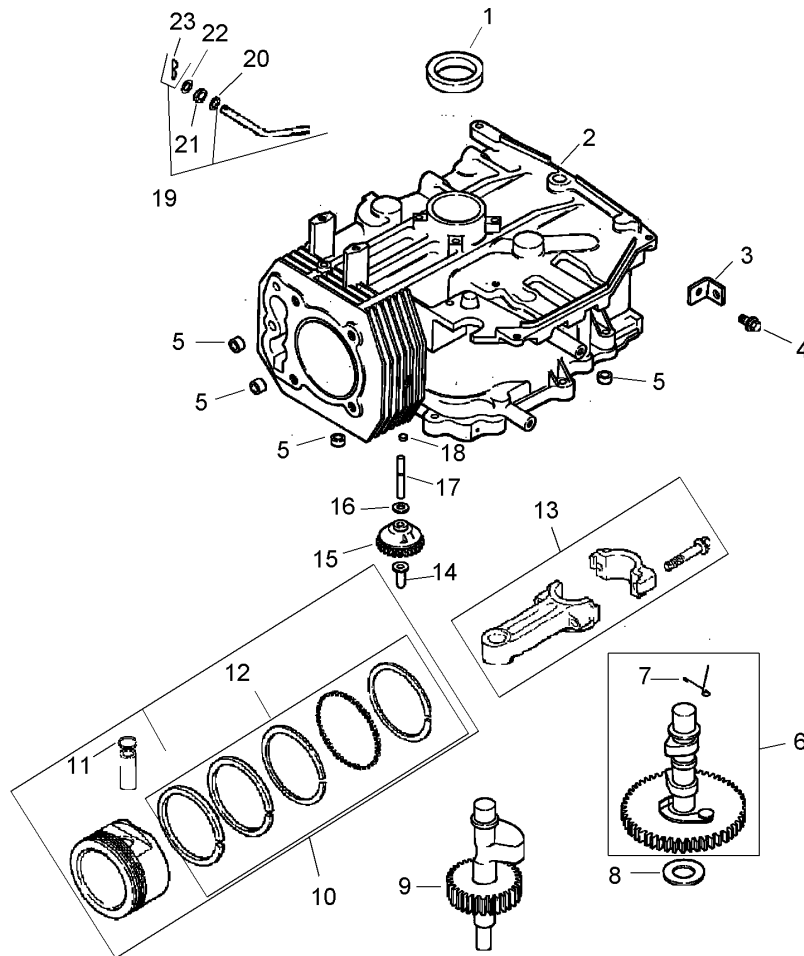
Ref	Part No.	Qty.	Description
22	323-16	1	Screw-HH
24	32144-41	18	Screw-Taptite
25	3230-18	5	Screw-CARR
26	94-1580	1	Deflector ASM
26:1	92-7108	1	Decal-Danger
26:2	93-1122	1	Decal-Danger
27	3211-15	2	Screw-HH
28	3296-5	2	Nut-Lock
29	67-2150-03	1	Baffle
30	1-373034	4	Washer
31	46-8560	5	Screw-HHF
32	3230-18	4	Screw-CARR
33	3296-29	14	Nut-Lock, NI
34	29-4820	1	Roller
35	3290-357	8	Nut-HHF, Whiz
36	98-5975	4	Washer-Belleville
37	106-2217	1	Belt-V
38	94-2500	1	Tube-Spacer, Wheel
39	3296-39	1	Nut-Lock, NI
40	322-2	5	Screw-HH



52in Deck Belt Drive and Lift System Assembly

Ref	Part No.	Qty.	Description
1	1-613098	2	Pulley-Idler
2	3256-24	3	Washer-Flat
3	98-5975	3	Washer-Belleville
4	323-6	3	Screw-HH
5	3296-39	2	Nut-Lock, NI
6	3217-7	1	Nut-Hex
7	94-2547	1	Bolt-Eye
8	105-6992	1	Spring-Extension
9	1-809107	2	Washer-Hardened
10	1-603384	1	Bushing-Pivot, Idler
11	105-7010	1	Idler Arm ASM
11:2	1-513034	2	Sleeve-Bearing
12	99-8912	1	Pulley-Idler, Flat
13	1-806005	8	Pin-Hair
14	100-7338	4	Clevis
15	104-3634	4	Pin-Clevis
16	3220-5	4	Nut-Jam
17	104-8047	4	Rod-Trunion
18	1-800805	1	Screw-HH
19	104-8037-03	1	Plate-Bolt, Retainer
20	104-3699-01	2	Link-HOC, Adjusting
21	3256-26	12	Washer-Flat
22	3296-16	2	Nut-Lock, NI
23	46-6290	1	O-Ring

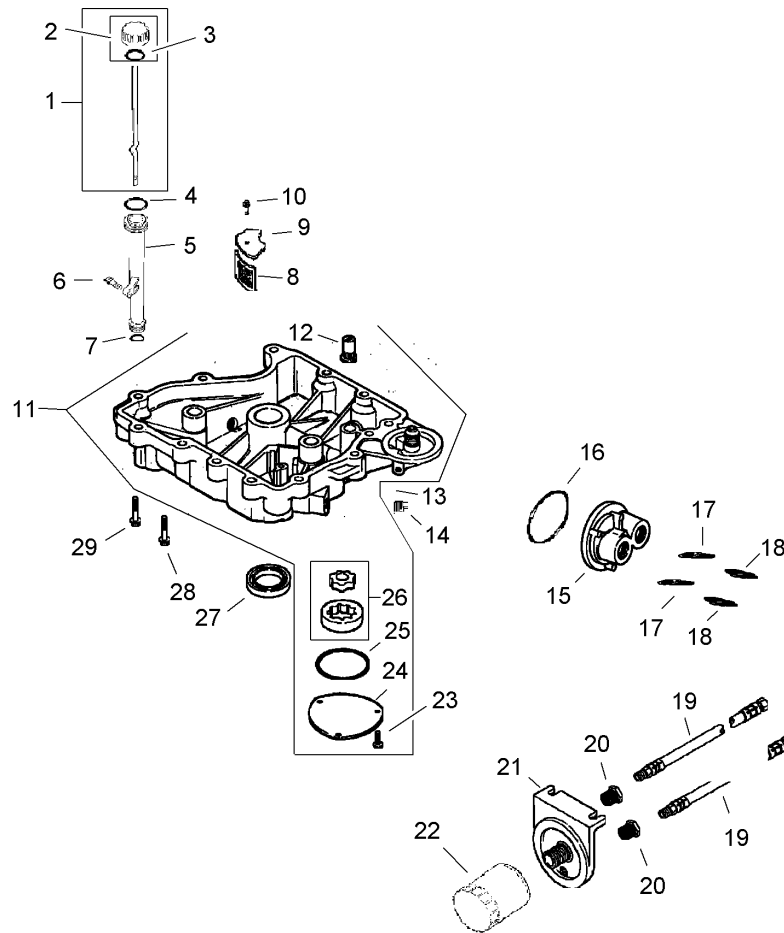
Ref	Part No.	Qty.	Description
24	3256-1	2	Washer-Flat
25	95-2747	1	Fitting-Washout
26	3229-1	2	Screw-CARR
27	95-3270	1	Connector-Hose
28	3272-10	4	Pin-Cotter
29	302-19	1	Fitting-Grease



Crankcase Assembly Kohler Cv492s-27525

Ref	Part No.	Qty.	Description
1	12 032 03-S	1	Seal-Oil
2		1	Crankcase (Use: Short Block 12 522 69)
3	12 445 02-S	1	Strap-Lifting
4	M-839025-S	1	Screw-HF (M8X1.25X25)
5	24 380 13-S	4	Pin-Locating
6	12 010 31-S	1	Camshaft (Includes 7)
7	12 089 31-S	1	Spring-Actuating
8	12 422 08-S	1	Shim-Camshaft (Blue .03)
9	12 422 09-S	1	Shim-Camshaft (Red .032)
10	12 422 10-S	1	Shim-Camshaft (Yellow .034)
11	12 422 11-S	1	Shim-Camshaft (Green .036)
12	12 422 12-S	1	Shim-Camshaft (Gray .038)
13	12 422 13-S	1	Shim-Camshaft (Black .04)
14	12 422 07-S	1	Shim-Camshaft (White .028)
15	12 144 28-S	1	Shaft-Balance
16	12 874 07-S	1	Piston W/Ring Set (STD.) (Includes 11, 12)
17	12 874 11-S	1	Piston W/Ring Set (.08)
18	12 874 08-S	1	Piston W/Ring Set (.25)
19	12 874 09-S	1	Piston W/Ring Set (.50)
20	12 018 02-S	2	Retainer-Pin, Piston
21	12 108 07-S	1	Ring Set (STD. And .08)
22	12 108 08-S	1	Ring Set (.25)

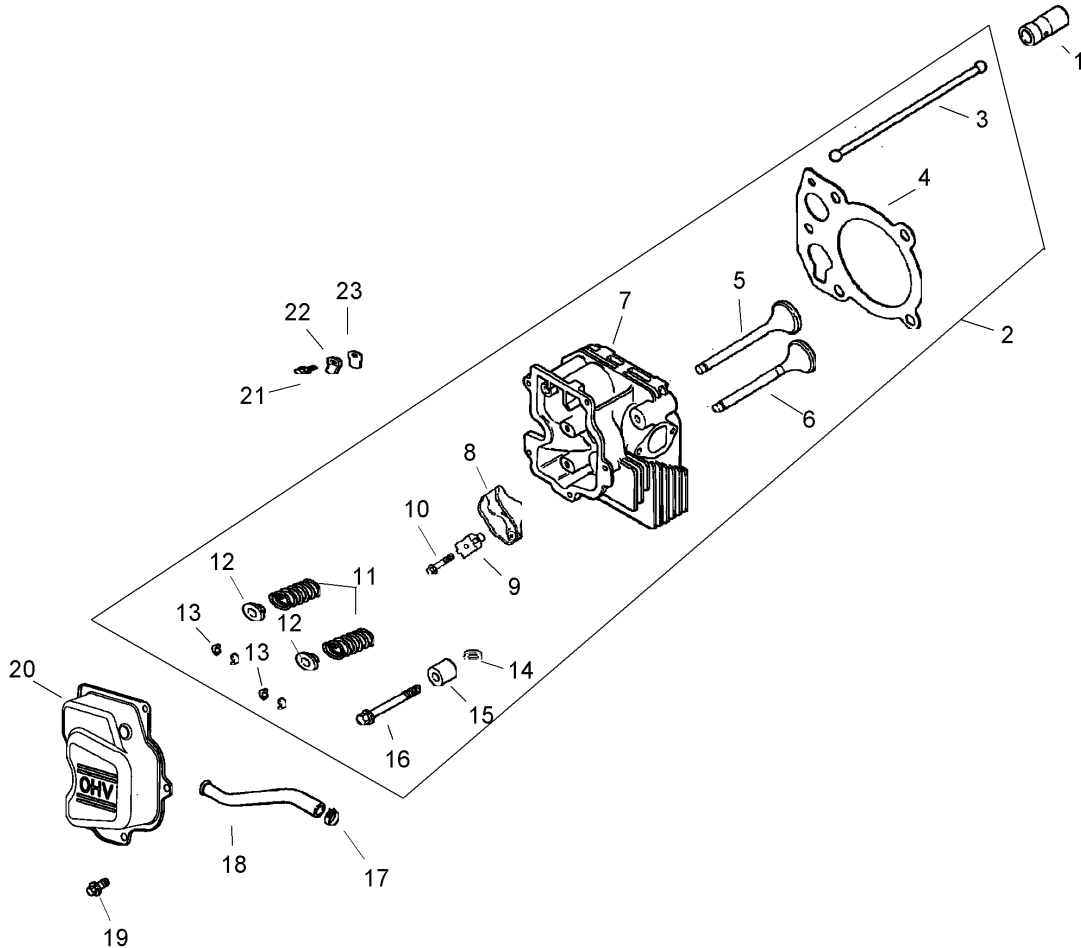
Ref	Part No.	Qty.	Description
1	12 108 09-S	1	Ring Set (.50)
13	12 067 11-S	1	Rod-Connecting (STD)
14	12 067 12-S	1	Rod-Connecting (.25)
15	12 380 01-S	1	Pin-Regulating, Governor
16	12 043 05-S	1	Gear-Governor
17	M-631005-S	1	Washer-Plain (6 Mm)
18	12 144 02-S	1	Shaft-Gear, Governor
19	52 139 09-S	1	Plug-Cup
20	12 755 64-S	1	Kit, Governor Cross Shaft W/Clip (Includes 23)
21	X-25-102-S	1	Washer-Flat (1/4)
22	12 032 01-S	1	Seal-Cross Shaft, Governor
23	M-631015-S	1	Washer-Flat (6Mm)
24	12 154 05-S	1	Clip-Pin, Hitch



Oil Pan and Lubrication Assembly Kohler Cv492s-27525

Ref	Part No.	Qty.	Description
❶	12 038 01-S	1	Dipstick (Includes 2, 3)
❷	25 755 13-S	1	Kit, Oil Fill Cap (Includes 3)
❸	25 153 02-S	1	O-Ring
❹	12 153 02-S	1	O-Ring
❺	12 123 04-S	1	Oil Fill Tube ASM
❻	M-545020-S	1	Screw-HHFTF (M5X0.8X20)
❼	12 153 01-S	1	O-Ring
❽	25 162 07-S	1	Screen-Pickup, Oil
❾	12 096 03-S	1	Cover-Screen, Oil Pickup
❿	M-545016-S	1	Screw-HHFTF (M5X0.8X16)
⓫	12 199 50-S	1	Pan Assembly, Oil (Includes 12, 23-26)
⓬	25 462 09-S	1	Valve-Relief, Oil Pressure
⓭	25 139 52-S	1	Plug-Pipe (1/8In)
⓮	25 139 57-S	2	Plug-Solid, Square Head (.38)
⓯	12 029 02-S	1	Adapter, Oil Filter
⓰	24 153 13-S	1	O-Ring
⓱	25 158 10-S	2	Bushing, Reducing 7/8X1/4X1/2 N.P.T.F.
⓲	52 136 02-S	2	Nipple-Metallic
⓳	52 326 11-S	2	Hose, Oil (Red Tracer) (2) 1/8-27 N.P.T.F. Male Coupling, 1/4-18 N.P.S.M. Female Coupling X 23In Long

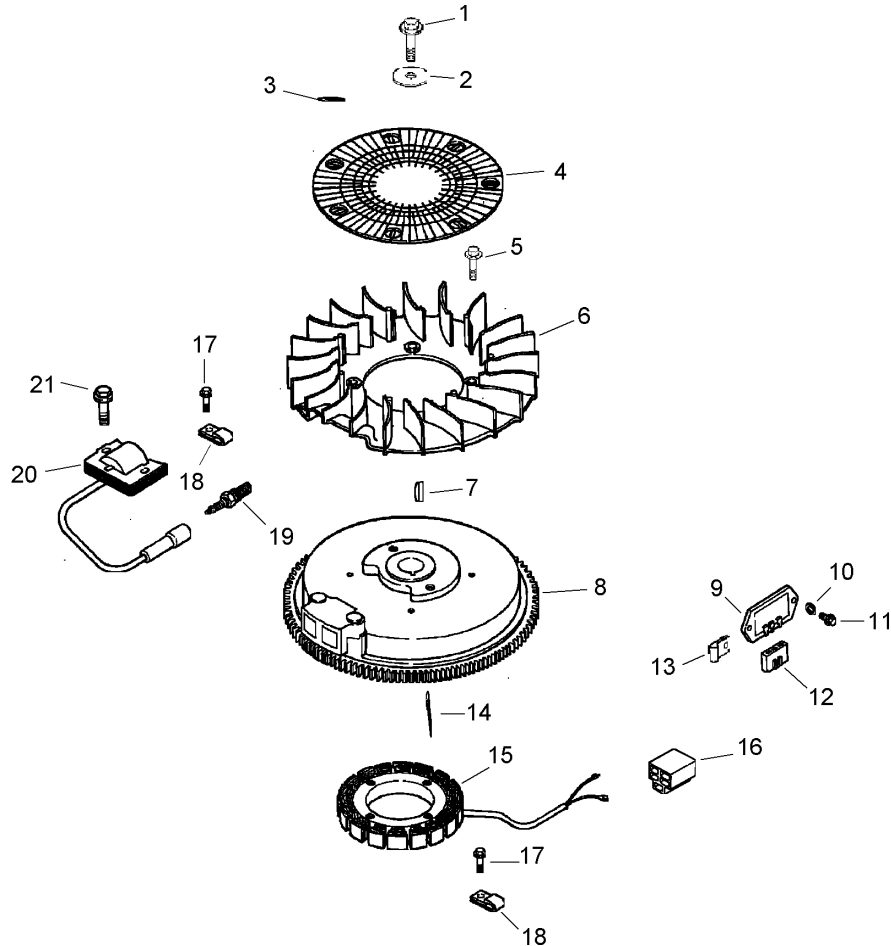
Ref	Part No.	Qty.	Description
⓴		0	1/4-18 N.P.S.M. Female Coupling X 23" Long
⓵	25 158 15-S	2	Bushing, Reducing 1/8X1/4 N.P.T.F.
⓶	12 029 02-S	1	Adapter, Oil Filter
⓷	12 050 01-S	1	Filter-Oil
⓸	M-545016-S	3	Screw-HHFTF (M5X0.8X16)
⓹	12 096 34-S	1	Cover-Pump, Oil
⓺	12 153 06-S	1	O-Ring (Oil Pump Cover)
⓻	12 393 01-S	1	Oil Pump ASM
⓼	12 032 03-S	1	Seal-Oil
⓽	24 086 16-S	11	Screw-HF (M8X1.25X45)
⓾	24 086 17-S	1	Screw-HF (M8X1.25X45)



Head, Valve and Breather Assembly Kohler Cv492s-27525

Ref	Part No.	Qty.	Description
❶	25 351 01-S	2	Lifter-Valve
❷	24 755 101-S	1	Kit, Cylinder Head (Includes 3-16, Carburetor Gasket (2),
❸	12 411 05-S	2	Rod-Push
❹	12 041 10-S	1	Gasket-Head, Cylinder
❺	12 017 01-S	1	Valve-Intake (STD)
❻	12 016 01-S	1	Valve-Exhaust (STD)
❼	12 318 51-S	1	Head-Cylinder
❽	25 186 01-S	2	Arm-Rocker
❾	12 599 03-S	2	Pivot-Arm, Rocker
❿	M-640034-S	2	Screw-HF (M6X1.0X34)
⓫	12 089 34-S	2	Spring-Valve
⓬	12 173 01-S	2	Cap-Spring, Valve
⓭	12 755 03-S	2	Retainer Kit
⓮	12 468 05-S	1	Washer-Flat (1/2)
⓯	12 112 13-S	1	Spacer-Head Bolt (Exhaust Port)
⓰	20 086 02-S	5	Screw-Flange, Hex (M10X1.5X37)
⓱	25 237 14-S	1	Clamp-Hose
⓲	12 326 18-S	1	Hose-Breather
⓳	M-645016-S	5	Screw-HHFTF (M6X1.0X16)
⓴	12 096 47-S	1	Cover-Valve
⓵	M-545010-S	1	Screw-HHFTF (M5X0.8X10)
⓶	66 018 04-S	1	Retainer-Reed, Breather
⓷	12 402 02-S	1	Reed-Breather

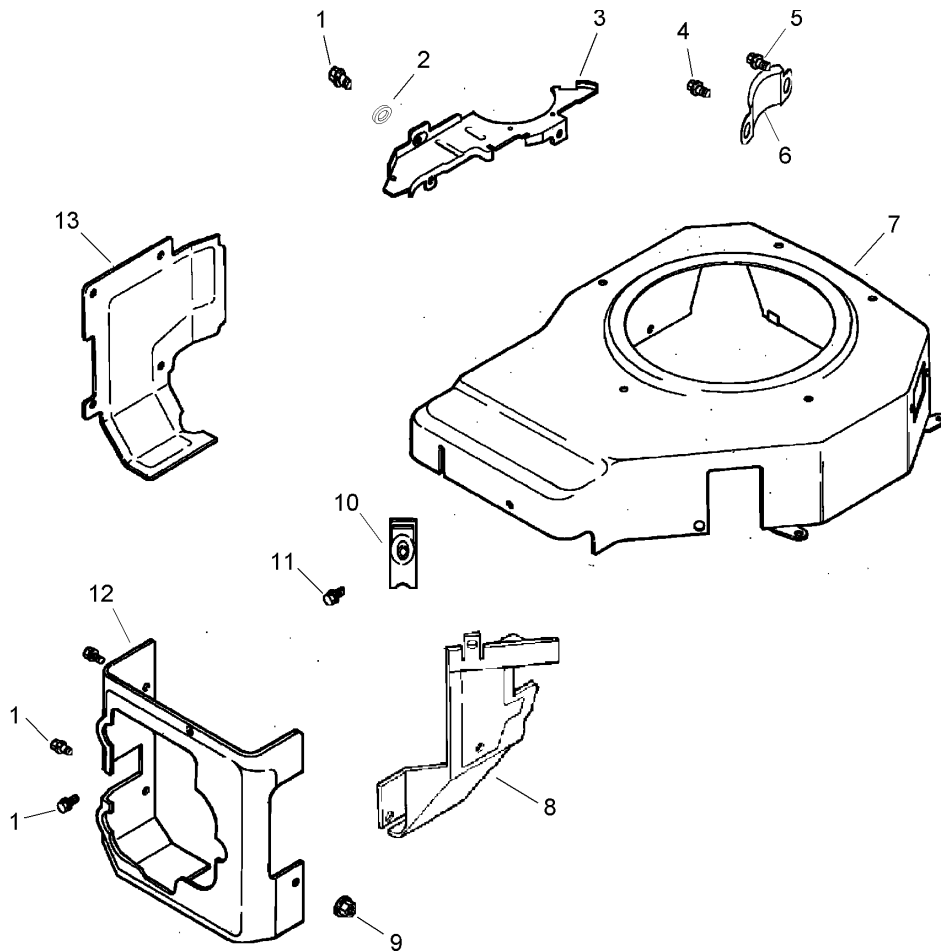
Ref	Part No.	Qty.	Description
❸		0	Not Illustrated
❺	12 017 02-S	1	Valve-Intake (.25)
❻	12 016 02-S	1	Valve-Exhaust (.25)
❼	12 041 01-S	2	Gasket-Carburetor
❽	12 041 02-S	1	Gasket-Base, Air Cleaner
⓯	12 041 03-S	1	Gasket-Manifold, Exhaust



Ignition and Electrical Assembly Kohler Cv492s-27525

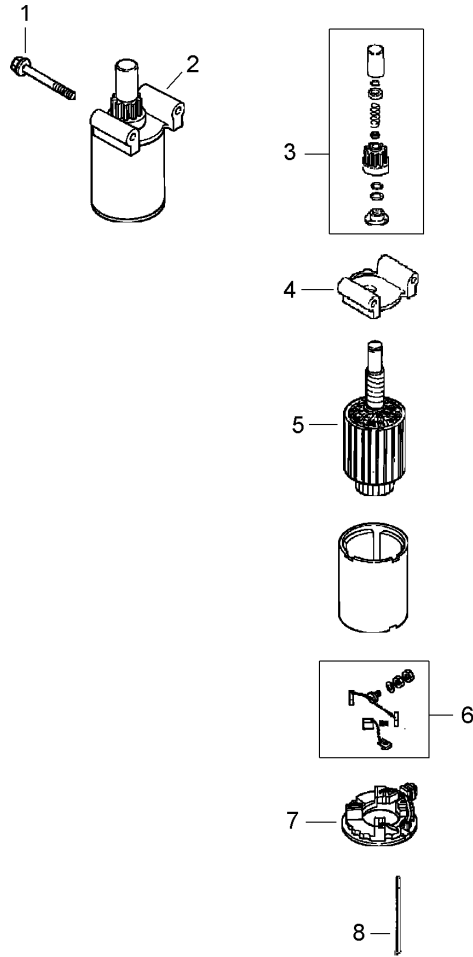
Ref	Part No.	Qty.	Description
❶	12 086 14-S	1	Screw-Hex, Flange (M10X1.5X45)
❷	12 468 03-S	1	Washer-Flat (.38)
❸	24 018 03-S	3	Retainer
❹	24 162 03-S	1	Screen-Grass
❺	25 086 47-S	4	Bolt-Shoulder (M6X1.0X16)
❻	12 157 06-S	1	Fan
❼	X-42-15-S	1	Key (.19 X .62)
❽	12 025 15-S	1	Flywheel
❾	41 403 09-S	1	Rectifier-Regulator
❿	X-22-11-S	1	Washer-Lock, Internal Tooth (1/4)
⓫	12 086 42-S	2	Screw-HF (M6X1.0X16)
⓬	236602-S	1	Connector (3 Contact)
⓭	12 157 07-S	2	Clip, Rectifier-Regulator
⓮	M-548025-S	2	Screw-HHFTF (M5X0.8X25)
⓯	237878-S	1	Kit, Stator (Includes Terminal 25 452 01-S)
⓰	48 155 01-S	1	Connector (5 Contact)
⓱	M-545010-S	2	Screw-HHFTF (M5X0.8X10)
⓲	X-728-1-S	2	Clip
⓳	12 132 02-S	1	Spark Plug
⓴	12 584 04-S	1	Module-Ignition
⓵	M-545020-S	2	Screw-HHFTF (M5X0.8X20)

--	--	--	--



Blower Housing and Baffle Assembly Kohler Cv492s-27525

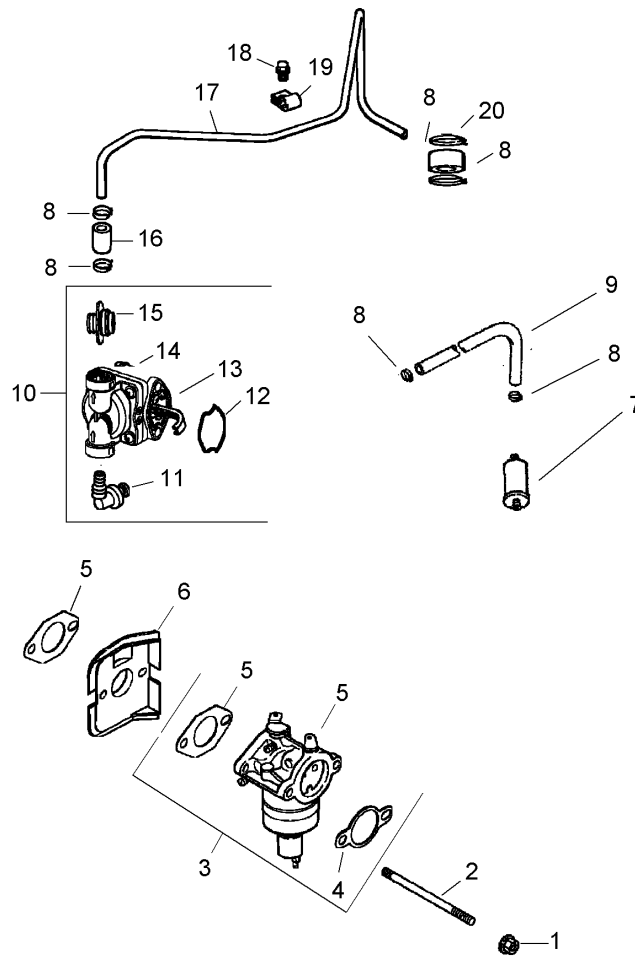
Ref	Part No.	Qty.	Description				
1	M-545010-S	5	Screw-HHFTF (M5X0.8X10)				
2	24 468 10-S	1	Washer-Plain (1/4)				
3	12 146 07-S	1	Plate-Housing, Blower				
4	M-645016-S	1	Screw-HHFTF (M6X1.0X16)				
5	M-550010-S	1	Screw-HF (M5X0.8X10)				
6	24 096 05-S	1	Cover-Pinion				
7	12 027 55-S	1	Housing-Blower				
8	12 063 18-S	1	Baffle (Intake Side)				
9	M-541050-S	1	Nut-HF (M5X0.8)				
10	25 154 02-S	3	Clip-Mounting				
11	12 086 37-S	3	Screw-Washer, Captive (M5X0.8X20)				
12	12 063 20-S	1	Baffle (Cylinder Head)				
13	12 063 19-S	1	Baffle-Cylinder				
		0	Not Illustrated				
	12 113 119-S	1	Decal, 18 Hp				



Starter Assembly Kohler Cv492s-27525

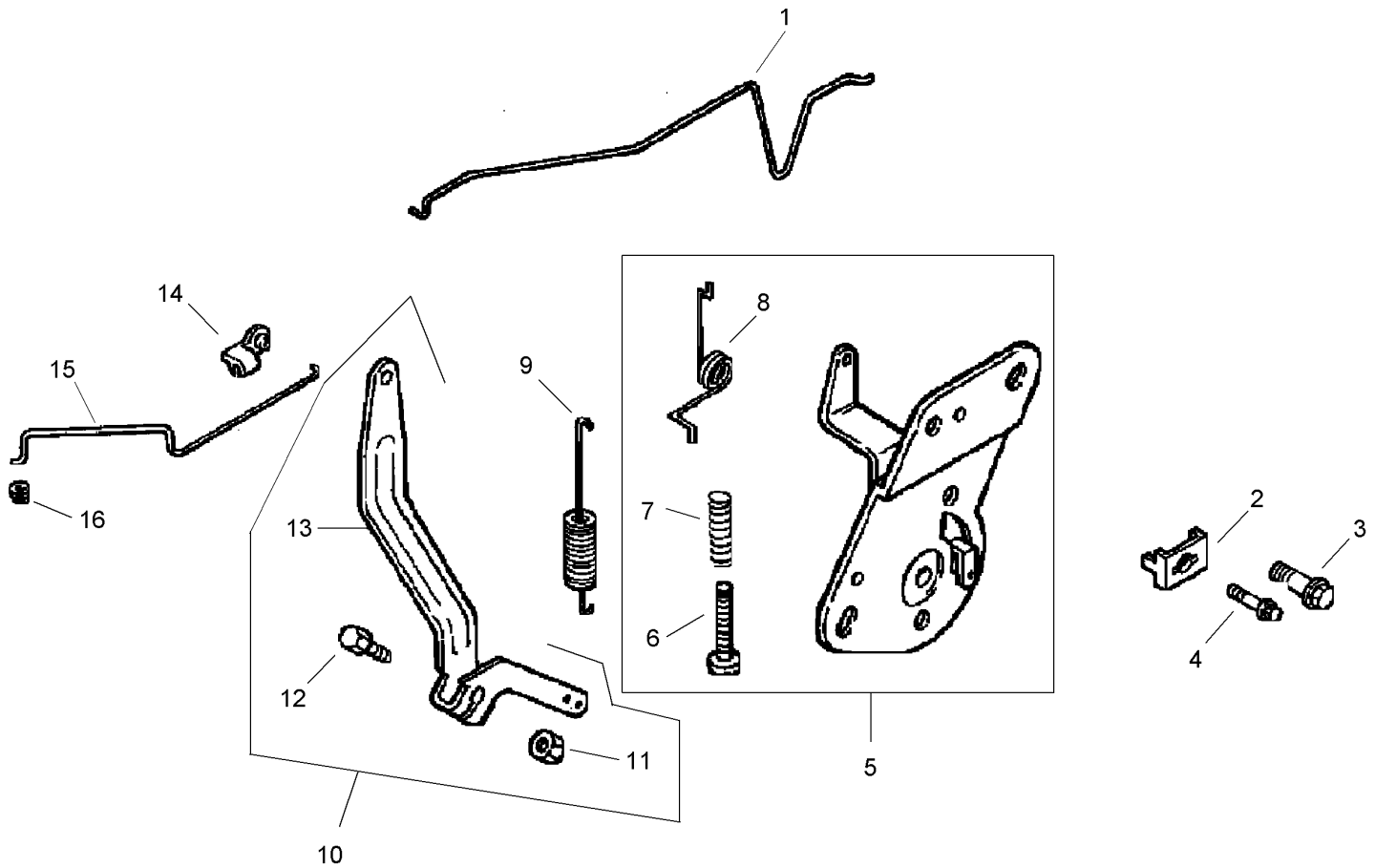
Ref	Part No.	Qty.	Description
1	M-839070-S	2	Screw-HF (M8X1.25X70)
2	12 098 22-S	1	Starter Assembly (Includes 3-8)
3	12 755 53-S	1	Drive Kit
4	12 227 19-S	1	Cap-End, Drive
5	12 170 05-S	1	Armature
6	12 221 01-S	1	Brush ASM
7	12 227 13-S	1	Commutator-Cap, End
8	12 211 01-S	2	Bolt

--	--	--	--



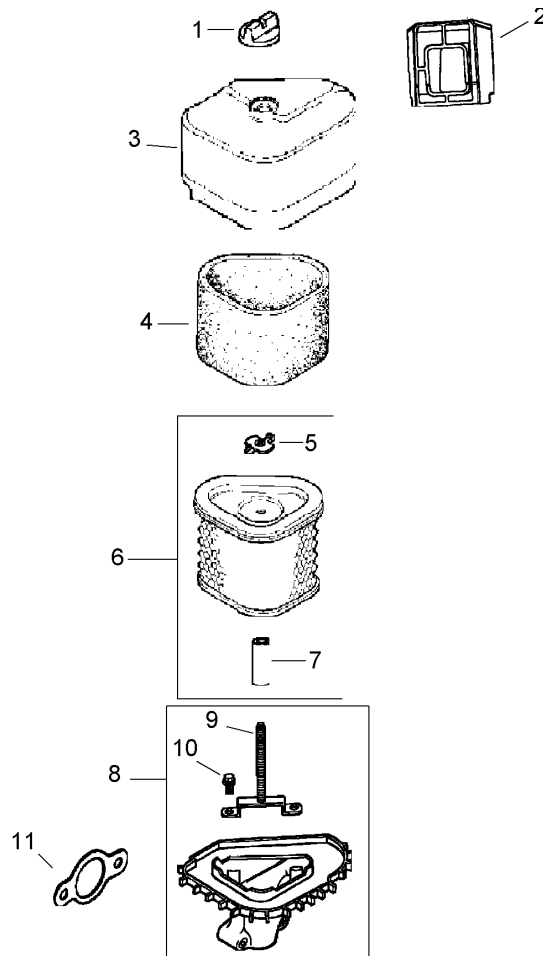
Fuel System Assembly Kohler Cv492s-27525

Ref	Part No.	Qty.	Description
❶	M-641060-S	2	Nut-Hex, Flange (M6X1.0)
❷	M-629116-S	2	Stud (M6X1.0X116)
❸	12 853 117-S	1	Kit, Carburetor W/Gaskets (Includes 4, 5 [qty. 1],
❹		0	Tie 12 454 03-S, And Terminal 25 452 20-S)
❺	12 041 02-S	1	Gasket-Base, Air Cleaner
❻	12 041 01-S	2	Gasket-Carburetor
❼	12 265 06-S	1	Deflector-Heat
❽	12 294 13-S	1	Fitting-90 DEG
❾	25 237 14-S	6	Clamp-Hose
❿	25 353 14-S	1	Line-Fuel, 7 Inch
⓫	25 050 07-S	1	Filter-Fuel
⓬	12 559 02-S	1	Kit, Fuel Pump (Includes 13-15)
⓭	M-645020-S	2	Screw-Flange, Hex (M6X1.0X20)
⓮	25 041 10-S	2	Gasket, Fuel Pump
⓯	25 153 04-S	1	O-Ring (Fuel Pump)
⓰	25 294 09-S	1	Connector-Hose, Straight
⓱	12 353 01-S	1	Line-Fuel (1-1/4In)
⓲	12 123 19-S	1	Line-Fuel. Metal
⓳	M-545010-S	1	Screw-HHFTF (M5X0.8X10)
⓴	12 154 01-S	1	Clamp-Line, Fuel
⓵	41 353 18-S	1	Line-Fuel (2-1/2In)



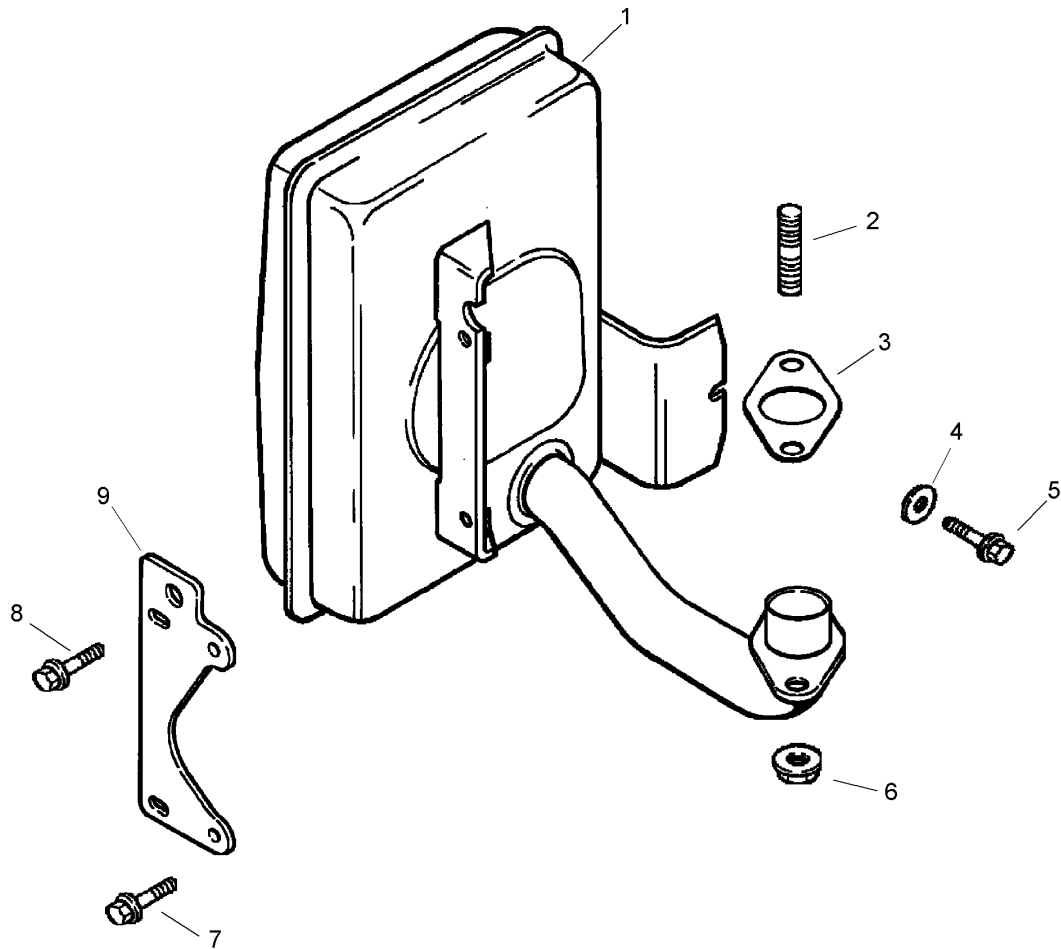
Engine Control Assembly Kohler Cv492s-27525

Ref	Part No.	Qty.	Description
❶	12 079 11-S	1	Linkage-Choke
❷	12 237 01-S	1	Clamp-Cable
❸	M-545016-S	1	Screw-HHFTF (M5X0.8X16)
❹	M-664020-S	2	Screw-Socket, 6 Lobed (Thread Forming, M6X1.0X20)
❺	12 536 01-S	1	Control, Speed Assembly (Includes 6-8)
❻	12 086 39-S	1	Screw-Pan Head (W/Loctite)
❼	12 089 11-S	1	Spring-Control, Speed
❸	12 089 23-S	1	Spring-Return, Choke
❹	12 089 19-S	1	Spring-Governor
❺	12 755 83-S	1	Kit, Governor Lever (Includes 11-13)
❻	12 100 07-S	1	Nut-Flange, Hex (1/4-20)
❼	52 211 04-S	1	Bolt-Square Neck, Round Head (1/4-20X1)
❸	12 090 28-S	1	Lever-Governor
❹	25 158 11-S	1	Bushing-Linkage, Throttle
❺	12 079 10-S	1	Linkage-Throttle
❻	25 158 08-S	1	Bushing-Retaining, Linkage



Air Intake/Filtration Assembly Kohler Cv492s-27525

Ref	Part No.	Qty.	Description				
❶	25 341 03-S	1	Knob-Cover				
❷	12 281 02-S	1	Duct-Air				
❸	12 096 44-S	1	Cover-Cleaner, Air				
❹	12 083 12-S	1	Element-Precleaner				
❺	12 100 01-S	1	Nut-Wing				
❻	12 083 10-S	1	Element, Air Cleaner (Includes 5, 7, 8)				
❼	12 032 11-S	1	Seal				
❽	12 094 14-S	1	Base, Air Cleaner (Includes 10, 11)				
❾	12 072 04-S	1	Stud				
❿	12 086 01-S	2	Screw				
⓫	12 041 02-S	1	Gasket-Base, Air Cleaner				
⓬		0	Not Illustrated				
⓭	12 113 04-S	1	Decal-Cleaner, Air				



Exhaust Assembly Kohler Cv492s-27525

Ref	Part No.	Qty.	Description
❶	12 068 55-S	1	Muffler
❷	25 072 04-S	2	Stud (M8X1.25X33)
❸	12 041 03-S	1	Gasket-Manifold, Exhaust
❹	X-25-78-S	1	Washer-Plain (1/4In)
❺	M-545016-S	1	Screw-HHFTF (M5X0.8X16)
❻	M-841080-S	2	Nut-Hex, Flange (M8X1.25)
❼	M-645016-S	2	Screw-HHFTF (M6X1.0X16)
❽	M-645025-S	2	Screw-HF (M6X1.0X25)
❾	12 126 71-S	1	Bracket-Muffler
❿		0	Not Illustrated
⓫	12 755 70-S	1	Kit, Muffler Guard (Includes Screw (4) M-545010-S)
⓬	M-545010-S	4	Screw-HHFTF (M5X0.8X10)
⓭	12112 20-S	2	Spacer
⓮	12 522 511	1	Short Block
⓯	12 755 93-S	1	Gasket Set

NOTES

NOTES

NOTES

