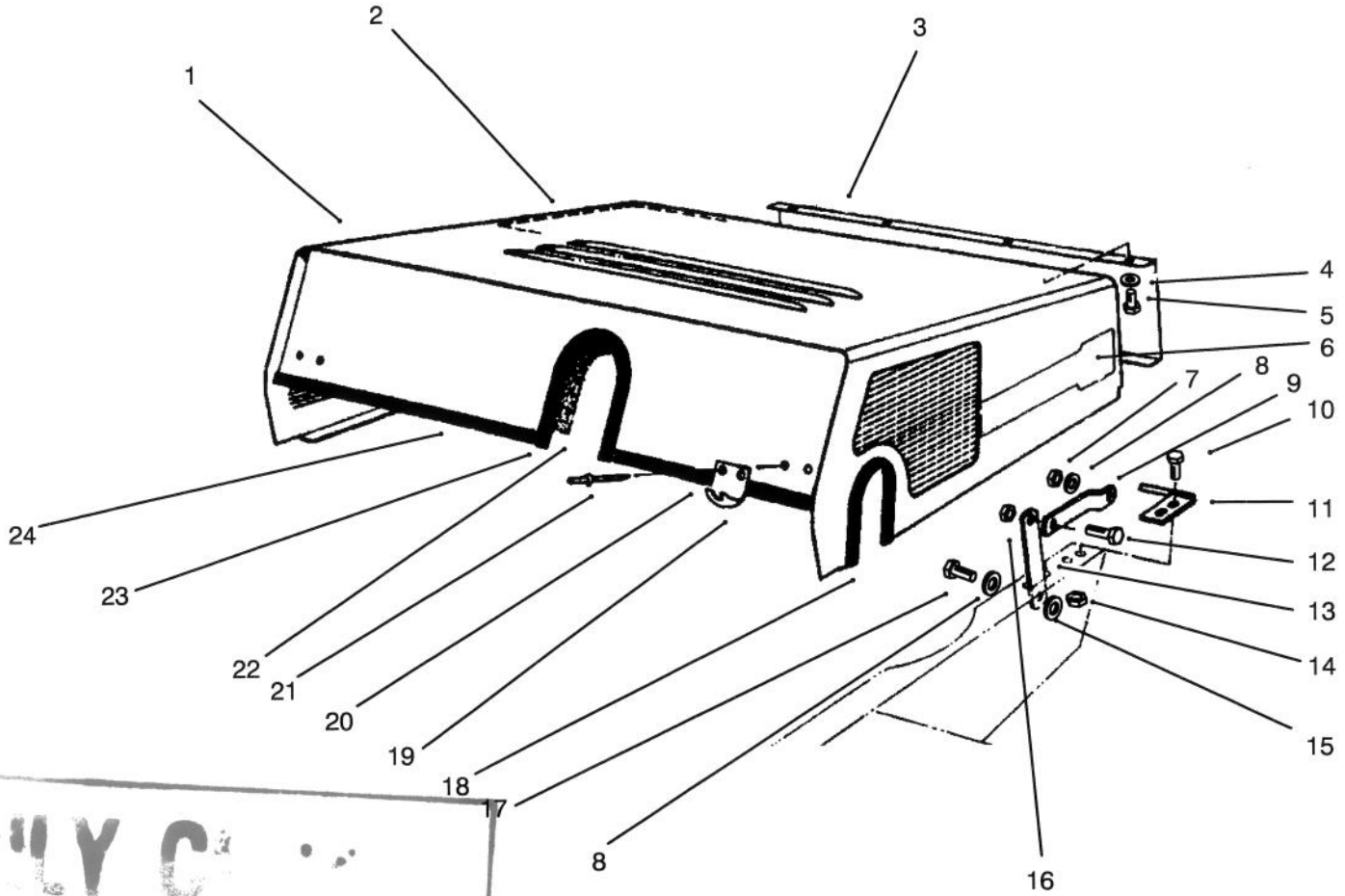




MODEL NO. 30620-390001 Thru 490001 & UP	<b>PARTS CATALOG</b>
<b>PROLINE 220 TRACTION UNIT</b>	



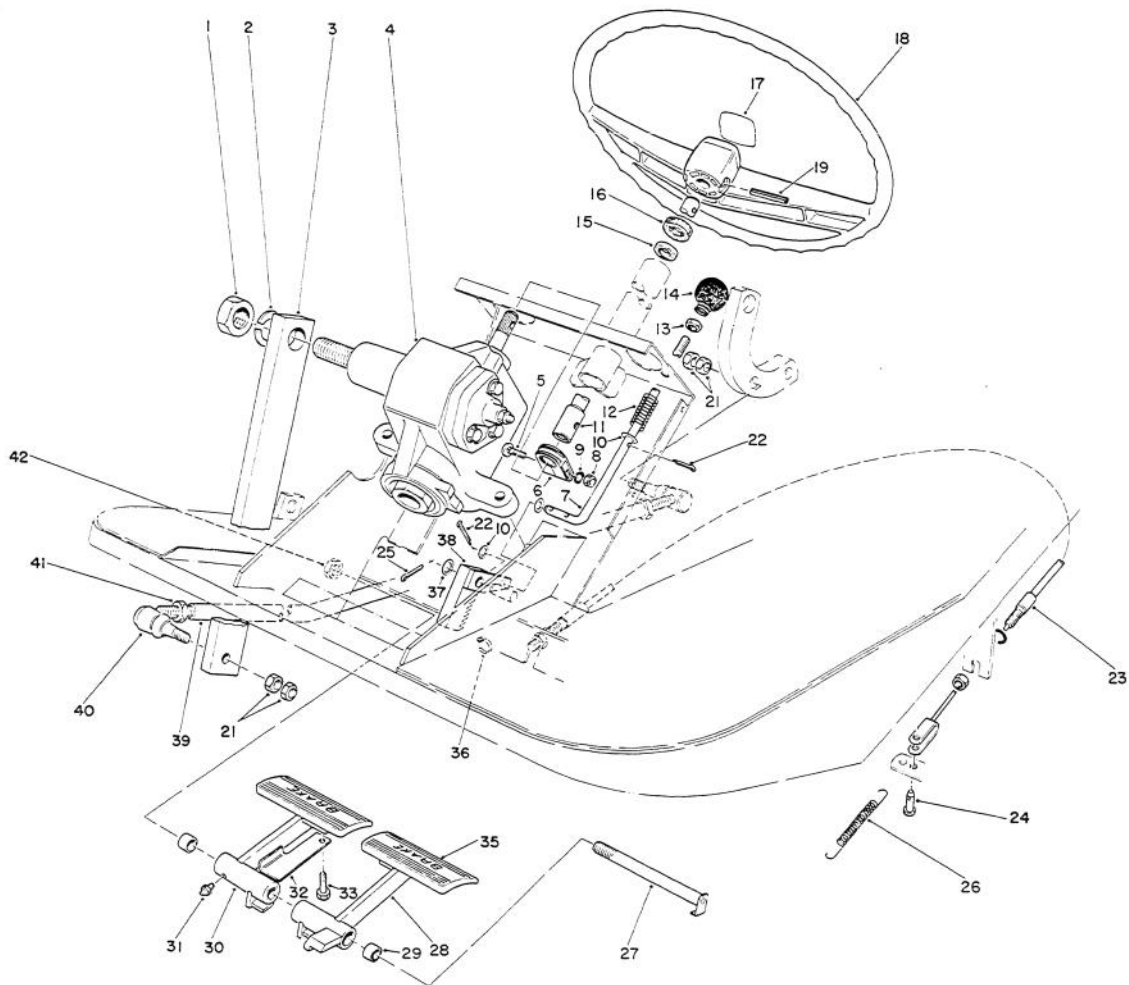
C-1275

### HOOD ASSEMBLY

Ref. No.	Part No.	Description	No. Used
1	12-5869	Hood	1
2	44-9040	Foam - Hood (Rear)	1
3	44-8830	Grille - Rear Panel	1
4	3256-22	Washer - Flat	8
5	32140-16	Screw - Self Tap. Hex. Hd.	8
6	92-1584	Decal - ProLine 220	2
7	32128-19	Nut - Flange	2
8	3290-211	Washer - Lock	4
9	27-6800	Link - Hood	2
10	3234-13	Screw - Hex. Flange Hd.	4
11	27-4830	Pin - Pivot L.H.	1
*	27-4800	Pin - Pivot R.H.	1
12	3211-27	Screw - Cap Hex. Hd.	2

Ref. No.	Part No.	Description	No. Used
13	27-6810	Tie - Hood	2
14	32128-33	Nut - Hex. Flange	4
15	4-2390	Washer	2
16	19-1470	Screw - Shoulder	2
17	3296-5	Nut - Lock	2
18	44-9190	Trim - Hood	1
19	249-40	Keeper - Reverse	2
20	46-3320	Trim - Hood	1
21	3269-16	Rivet - Pop	4
22	44-9030	Foam - Hood (Front)	1
23	38-4070	Trim - Hood	1
24	38-4080	Trim - Hood	1

\*Not Illustrated

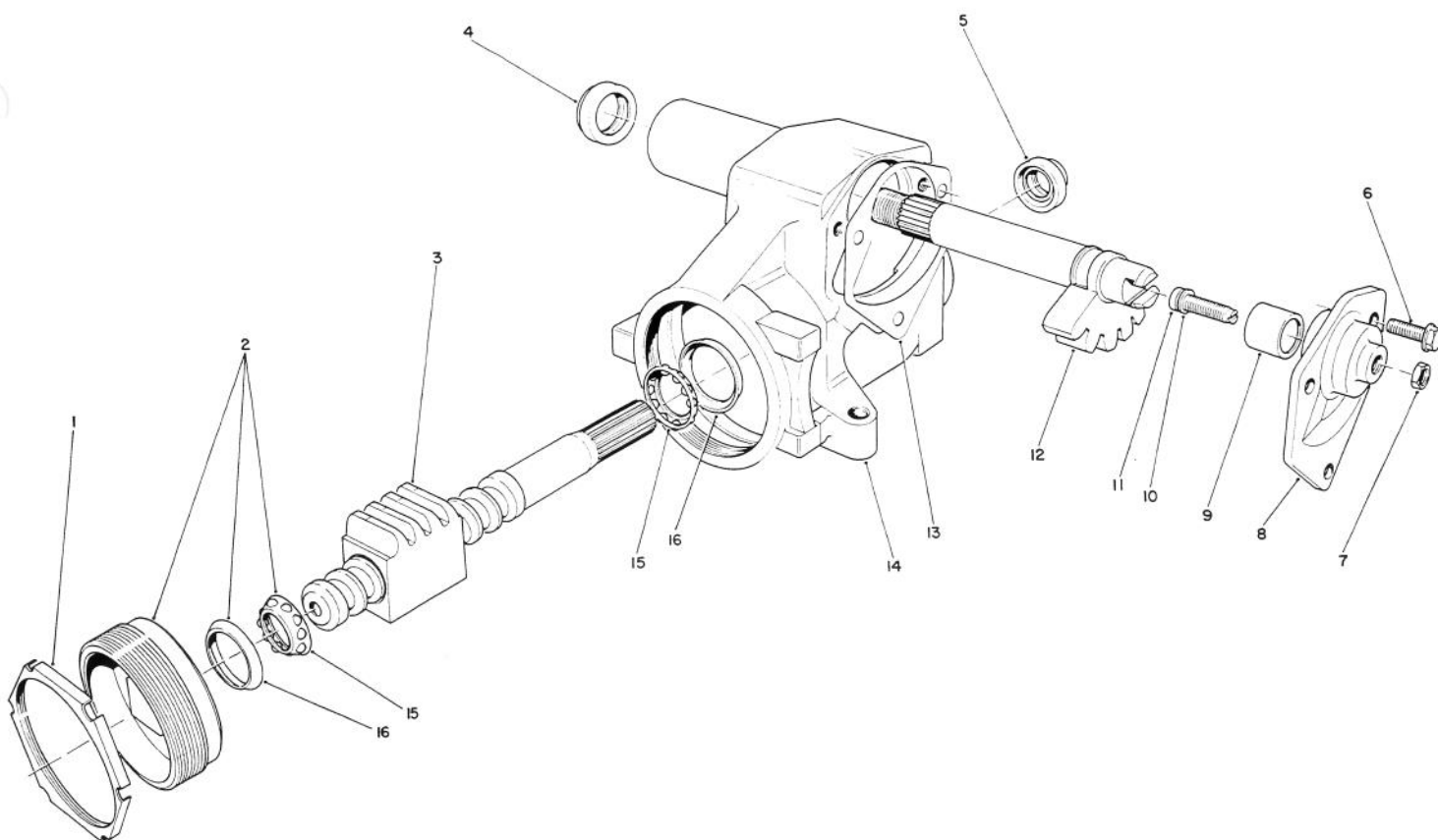


C-1280

## PEDALS & STEERING WHEEL ASSEMBLY

Ref. No.	Part No.	Description	No. Used	Ref. No.	Part No.	Description	No. Used
1	3220-8	Nut	1	23	21-3370	Assembly - Brake Cable	2
2	3253-28	Washer - Lock	1	24	283-58	Pin - Clevis	2
3	41-8880	Arm - Gear Box	1	25	3272-10	Pin - Cotter	3
4	41-8820	Steering Gear Assembly (Incl. Ref. #1 & 2)	1	26	3-7243	Spring - Return	2
5	3232-16	Bolt - Carriage	1	27	42-2540	Pin - Brake	1
6	41-8830	Clamp - Coupling	1	28	41-8810	Pedal - Brake L.H. (Incl. Ref. #29 & 31)	1
7	27-3550	Rod - Brake Latch	1	29	256-42	Bushing	4
8	3217-8	Nut - Hex.	1	30	41-8800	Pedal - Brake, R.H. (Incl. Ref. 29 & 31)	1
9	3253-6	Washer - Lock	1	31	302-5	Fitting - Grease	2
10	3256-22	Washer - Flat	3	32	27-3560	Latch - Parking Brake	1
11	41-8840	Shaft - Steering	1	33	32144-10	Screw - Hex. Self Tap	1
12	3-3251	Spring	1	35	7-3900	Pad - Brake	2
13	32128-33	Nut - Hex. Flange	1	36	3290-378	Tie - Cable	1
14	233-17	Knob	1	37	3256-26	Washer - Flat	2
†15	251-275	Bearing - Ball	1	38	42-3220	Rack	1
16	21-9260	Cover - Dust	1	39	27-3390	Tube - Front Steering	1
17		Cap - Steering Wheel	1	40	21-0141	Socket Assembly R.H.	2
18	76-1420	Wheel - Steering	1	41	3220-5	Nut - Hex. Jam	2
19	32121-10	Pin - Roll	1	42	3296-33	Nut - Lock	1
21	3220-3	Nut - Jam	4				
22	3272-5	Pin - Cotter	3				

†Included with Steering Post Bracket Assembly, Ref. Page 6, Item 43

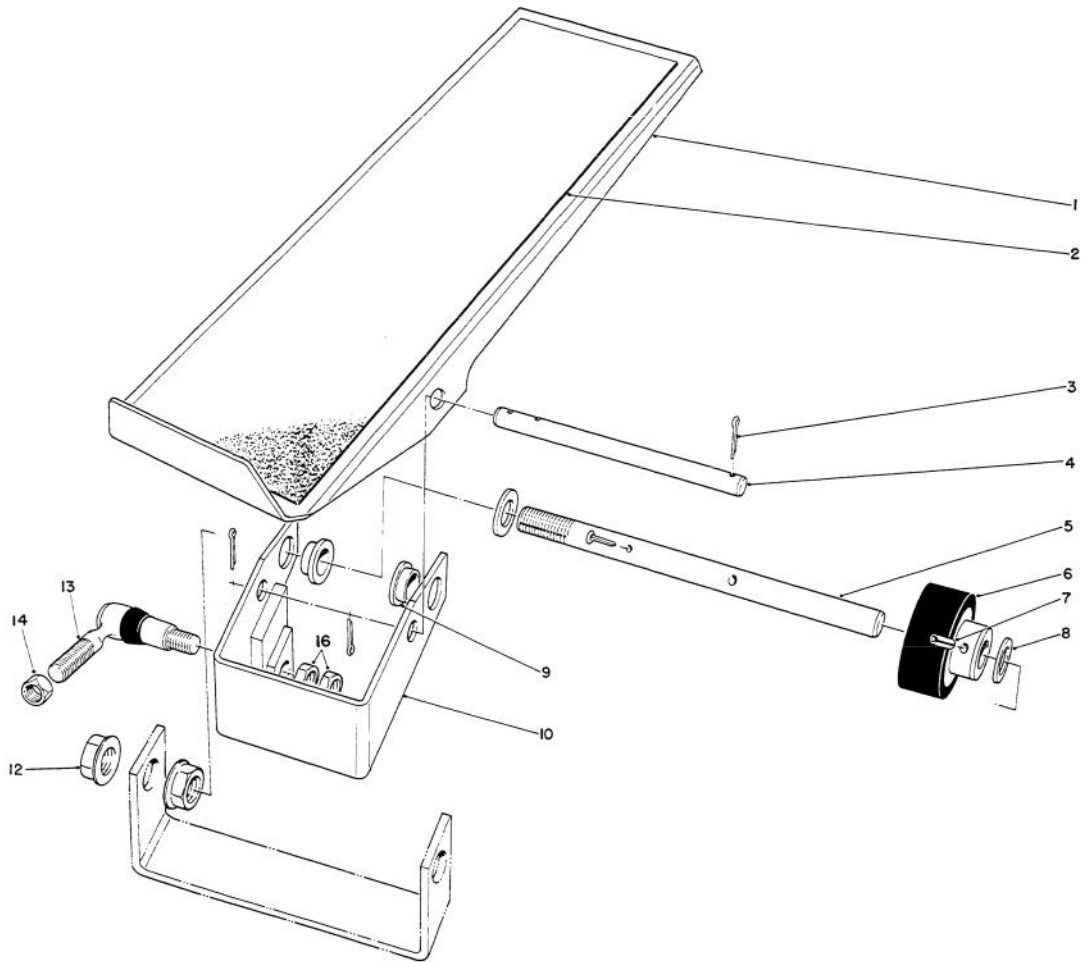


T-0701

## STEERING GEAR ASSEMBLY NO. 41-8820

Ref. No.	Part No.	Description	No. Used	Ref. No.	Part No.	Description	No. Used
1	5676217	Nut – Adjuster Lock	1	9		Bushing	1
2	7840888	Assembly – Adjuster	1	10	605142	Kit – Shim	1
3	7812946	Steering Worm Assembly	1	11	7802482	Adjuster	1
4	7801626	Seal	1	12	7812834	Gear – Pitman Shaft	1
5	7802160	Seal	1	13	5666734	Gasket	1
6	7807009	Bolt – Flange Hex. Hd.	3	14	5679292	Housing – Steering Gear	1
7	114495	Nut	1	15	5666693	Assembly – Thrust Bearing	2
8	7806748	Kit – Side Cover Service (Incl. Ref. #6, 9, 11 & 13)	1	16	5666683	Cup – Bearing	2

Note: Obtain parts from your local GMC, Chevrolet Dealer.

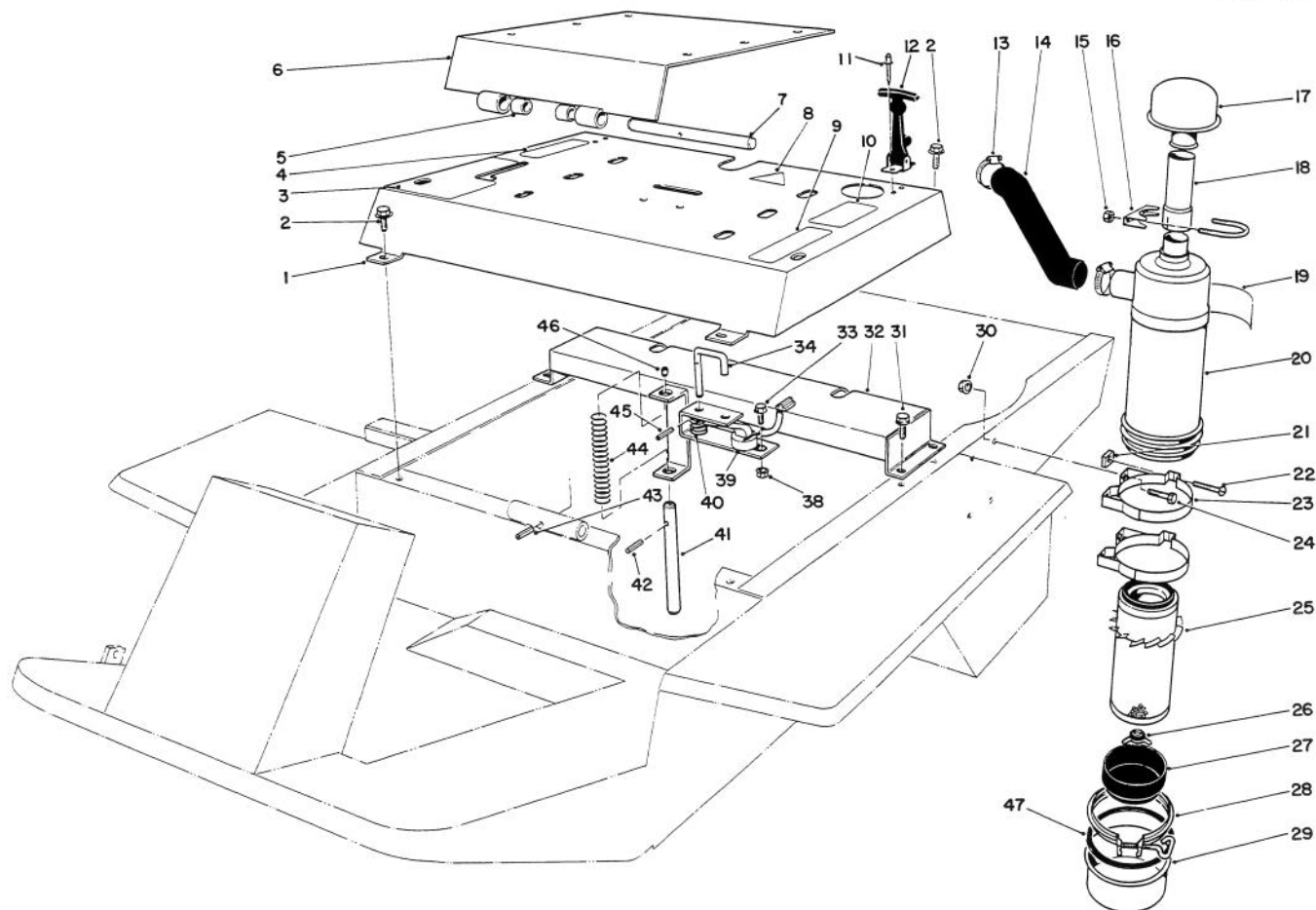


T-0700

## TRACTION PEDAL ASSEMBLY

Ref. No.	Part No.	Description	No. Used
1	29-5670	Pedal - Traction	1
2	28-5130	Pad - Traction Pedal	1
3	3272-10	Pin - Cotter	4
4	29-5630	Pin - Pedal Pivot	1
5	29-5640	Shaft - Traction Pedal	1
6	28-5220	Wheel - Friction	1
7	32121-6	Pin - Roll	1
8	5-7570	Washer	2

Ref. No.	Part No.	Description	No. Used
9	256-156	Bushing - Flange	2
10	29-5600	Pivot Bracket Assembly (Incl. Ref. #9)	1
11	3253-7	Washer - Lock	2
12	32128-49	Nut - Hex. Flange	2
13	21-0141	Socket Assembly R.H.	1
14	3220-5	Nut - Jam	1
16	3220-3	Nut - Jam	2

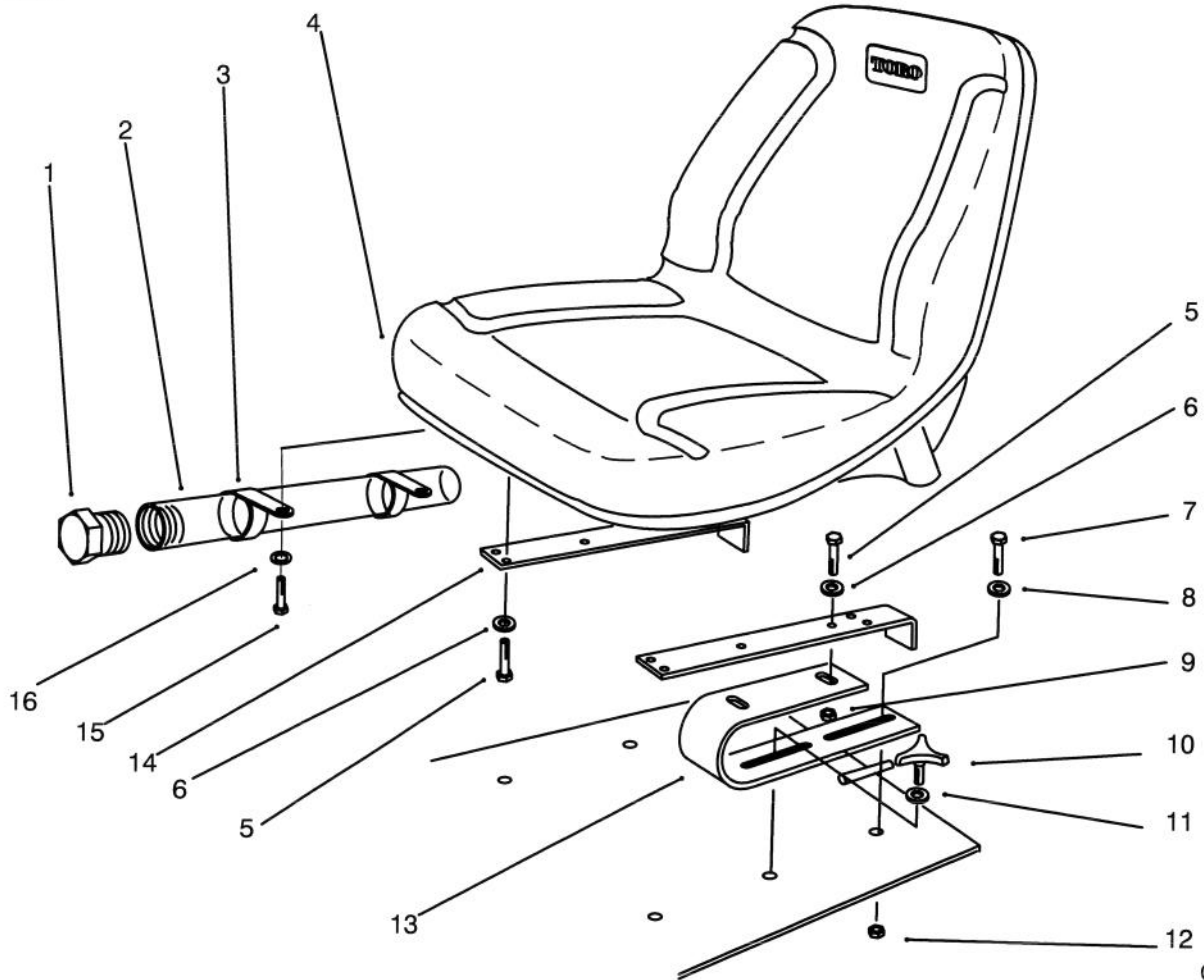


T-0699

## SEAT MOUNT & AIR CLEANER ASSEMBLY

Ref. No.	Part No.	Description	No. Used
1	61-8140	Cover - Seat Support (Incl. Ref. #4, 5, 9 & 10)	1
2	46-8560	Screw - Hex. Flange Hd.	4
3	68-7320	Decal - Hydraulic Lift	1
4	67-1710	Decal - Caution	1
5	256-173	Bushing	2
6	38-4020	Mounting - Seat (Incl. Ref. #5)	1
7	27-4720	Shaft - Seat Pivot	1
8	43-8480	Decal - Danger	1
9	68-7330	Decal - Caution	1
10	27-7310	Decal - Refueling	1
11	3269-16	Rivet - Pop	4
12	249-39	Assembly - Handle	2
13	2412-42	Clamp - Hose	2
14	44-9050	Hose - Air Cleaner Inlet	1
15	3217-6	Nut - Hex.	2
16	20-4840	Clamp - Muffler	1
17	27-7180	Assembly - Cap	1
18	44-8950	Tube - Air Cleaner	1
19	27-7160	Decal - Instruction	1
20	27-7100	Assembly - Air Cleaner (Incl. Ref. #18 & 24-28)	1
21	32107-11	Nut - Square	2
22	3258-19	Screw - Machine	2

Ref. No.	Part No.	Description	No. Used
23	27-7170	Assembly - Mounting, Band (Incl. Ref. #20 & 21)	2
24	322-3	Screw - Cap Hex. Hd.	4
25	27-7110	Assembly - Element	1
26	27-7120	Assembly - Nut & Gasket	1
27	27-7140	Skirt - Baffle	1
28	27-7130	Assembly - Clamp	1
29	27-7150	Assembly - Cup	1
30	32128-20	Nut - Hex. Flange	4
31	3234-11	Screw - Hex. Flange Hd.	4
32	37-9770	Support - Seat	1
33	3234-13	Screw - Hex. Flange Hd.	1
34	38-3170	Pin - Seat Switch	1
35	3253-3	Washer - Lock	1
38	32128-33	Nut - Hex. Flange Hd.	1
39	29-6930	Arm - Switch	1
40	3-6685	Spring	1
41	27-9870	Pin - Seat Switch	1
42	32121-6	Pin - Roll	1
43	32121-4	Pin - Roll	1
44	37-9590	Spring	1
45	32121-18	Pin - Roll	1
46	28-6180	Pin - Plastic	1
47	80-3330	Gasket	1



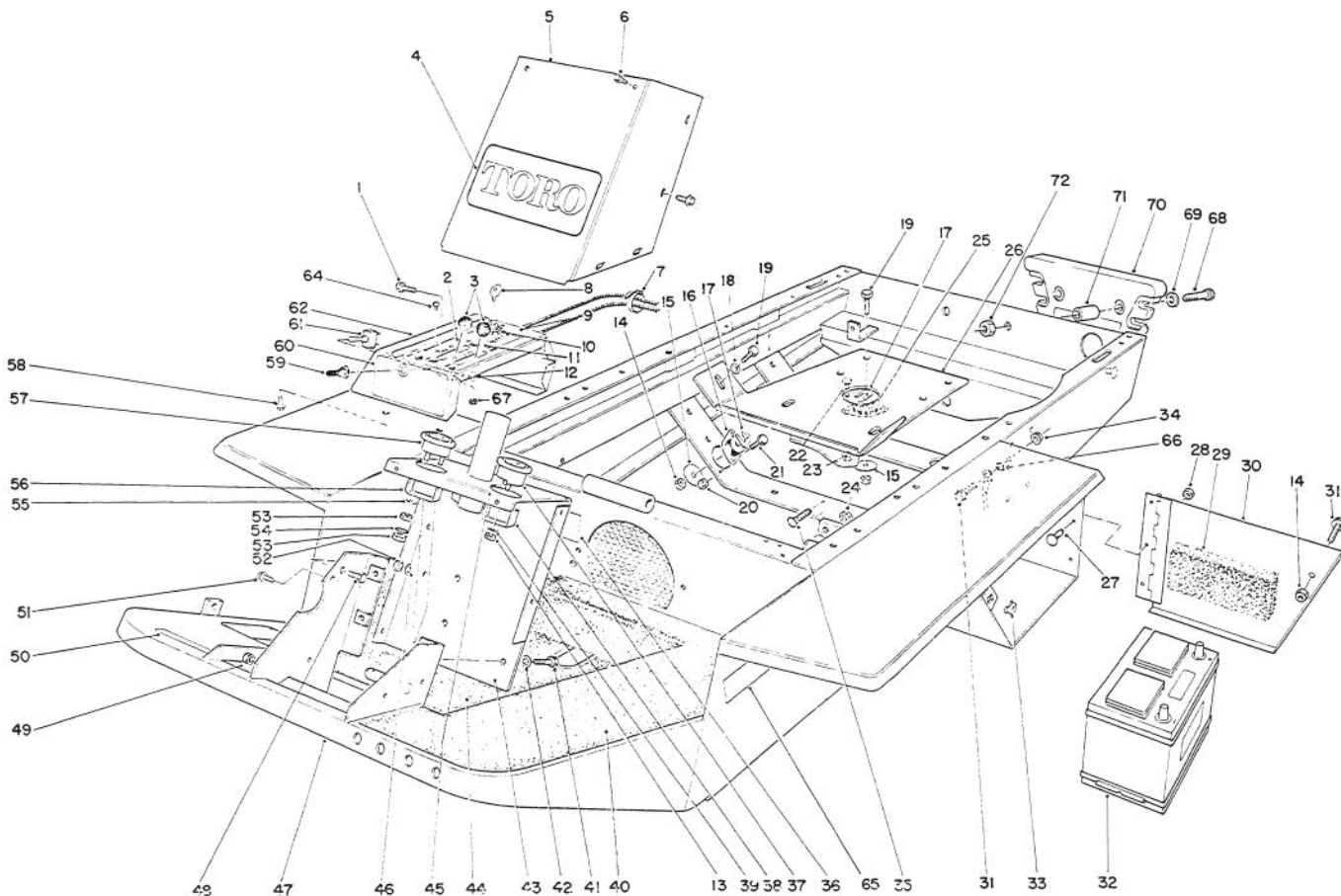
C-1274

### SEAT ASSEMBLY

Ref. No.	Part No.	Description	No. Used
1		Cap - Tube	1
2	74-0720	Tube - Manual	1
3	2412-123	R-Clamp	2
4	66-5400	Seat	1
5	322-5	Screw - Cap Hex. Hd	8
6	3253-4	Washer - Lock	8
7	27-5240	Bolt - Shoulder	2
8	3256-26	Washer - Flat	2
9	3217-6	Nut	4

Ref. No.	Part No.	Description	No. Used
10	27-4570	Handle - Adjustment	2
11	36-8020	Washer	2
12	3296-39	Nut - Lock	2
13	46-9110	Spring - Seat	2
14	46-9120	Mount - Seat	
*	92-1585	Seat Assembly (Incl. Ref. #1-14)	1

\*Not Illustrated



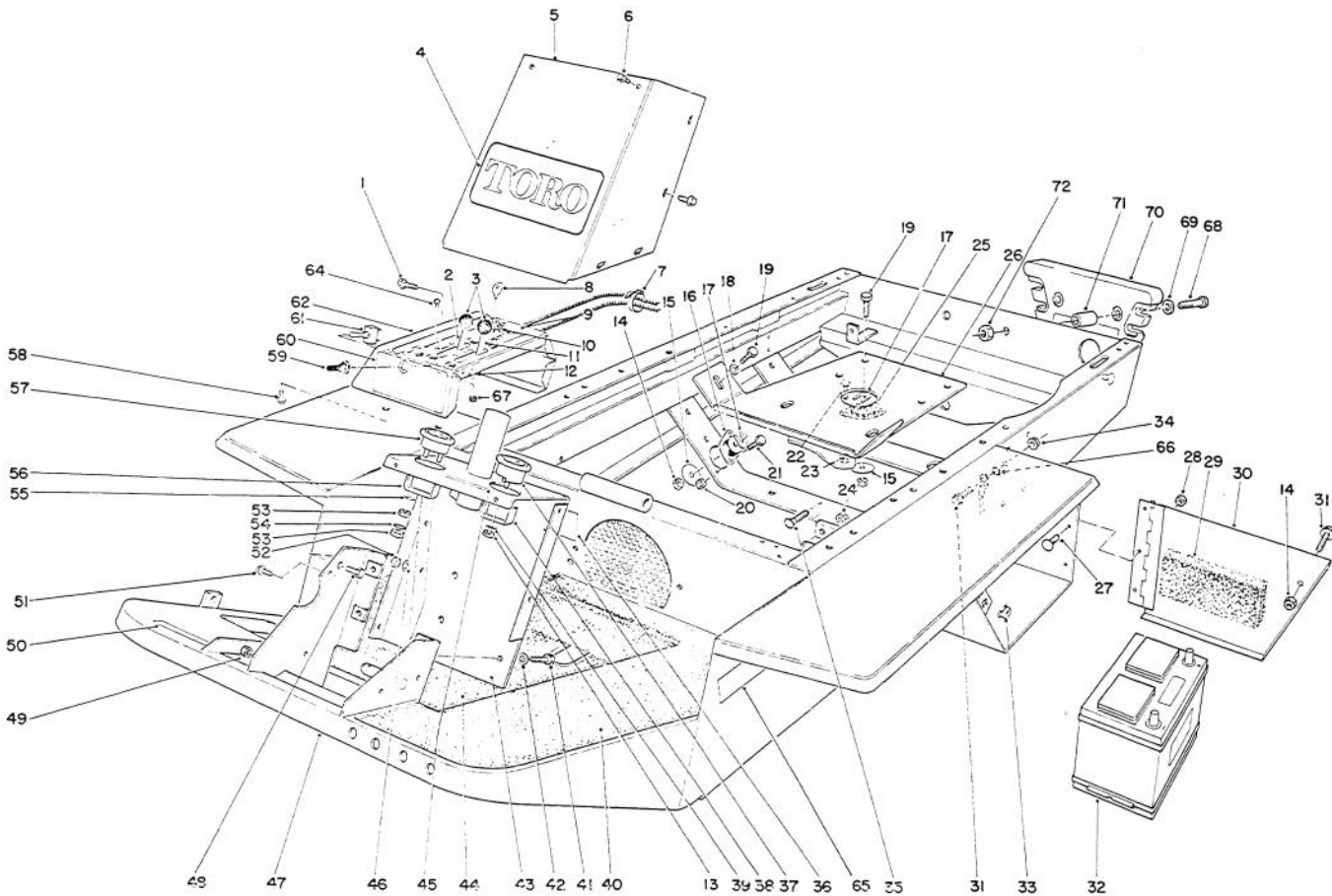
C-1281

## INSTRUMENT PANEL & STEERING POST ASSEMBLY

Ref. No.	Part No.	Description	No. Used
1	3234-4	Screw - Hex. Flange Hd.	1
2	44-9300	Control - Choke	1
3	233-35	Knob	2
4	62-5550	Decal - Toro	1
5	41-8900	Cover - Steering Tower	1
6	46-8560	Screw - Self Tap. Hex. Hd.	11
7	3290-378	Tie - Cable	1
8	63-8360	Key	1
9	68-7350	Decal - Instrument Panel	1
10	27-2360	Switch - Ignition	1
11	44-9250	Control - Throttle	1
12	3256-22	Washer - Flat	1
13	3217-26	Nut - Hex.	1
14	3296-39	Nut - Lock	5
15	63-7400	Washer	4
16	44-9390	Mount - Engine Rubber	2
17	42-6080	Shim - Axle	A/R
18	3256-24	Washer - Flat	2
19	323-12	Screw - Cap Hex. Hd.	4
20	3296-29	Nut - Lock	4
21	322-3	Screw - Cap Hex. Hd.	4
22	3290-134	Screw - Mach. Hex. Hd.	4
23	3296-2	Nut - Lock	4
24	3218-3	Nut - Hex. Jam	1
25	18-8000	Mount - Rubber	2
26	44-9320	Base - Engine	1

Ref. No.	Part No.	Description	No. Used
27	3274-31	Screw - Cap Button Hd.	3
28	3296-42	Nut - Lock	3
29	44-9460	Foam - Battery Cover	1
30	44-8920	Cover - Battery	1
31	3234-11	Screw - Flange Hex. Hd.	2
+32		Assembly - Battery	1
33	3290-433	Retainer - Grip Nut	1
34	3290-357	Nut - Flange Lock	1
35	3231-29	Bolt - Carriage	1
36	53-4430	Decal - Oil	1
37	12-9990	Meter - Hour	1
38	218-515	Bracket - Mounting	1
39	3254-1	Washer - Ext. Tooth	1
40	27-3250	Nonskid - Tunnel	1
41	324-6	Screw - Cap Hex. Hd.	3
42	3253-6	Washer - Lock	3
43	42-2580	Bracket - Steering Post	1
44	27-3260	Nonskid - Floor	1
45	41-8910	Decal - Instruction	1
46	3253-21	Washer - Lock	1
47	86-7290	Frame Assembly	1
48	3234-11	Screw - Hex. Flange Hd.	1
49	3296-42	Nut - Lock	2
50	27-7320	Decal - Traction Pedal	1
51	32104-60	Screw - Flange Hex. Hd.	1
52	3217-7	Nut - Hex.	1

+Obtain locally. Group Size 26

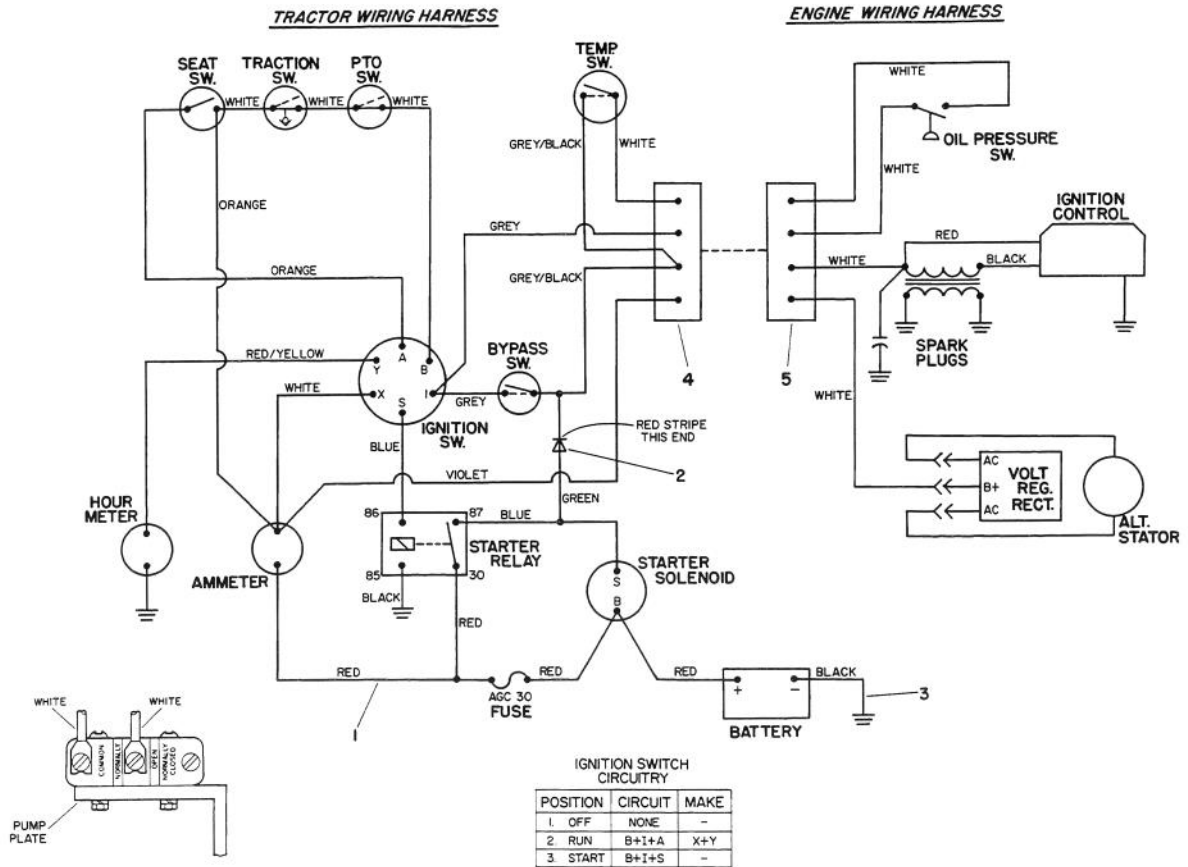


C-1281

## INSTRUMENT PANEL & STEERING POST ASSY. (Cont.)

Ref. No.	Part No.	Description	No. Used
53	3219-14	Nut - Brass	6
54	3254-8	Washer - Lock	2
55	3256-21	Washer - Flat	2
56	39-9600	Clamp - Mounting	1
57	33-0990	Ammeter	1
58	32104-116	Screw - Flange Hex. Hd.	2
59	218-473	Boot - Toggle Switch	1
60	46-3460	Decal - By-Pass	1
61	6-1659	Switch - Toggle (Incl. Ref. #58)	1

Ref. No.	Part No.	Description	No. Used
62	46-3350	Panel - Instrument	1
64	3251-3	Screw - Mach. Rd. Hd.	4
65	75-0810	Decal	2
66	3255-9	Washer - Ent. Tooth	1
67	32149-7	Nut - Keps	4
68	325-8	Screw	2
69	3253-7	Washer - Lock	2
70	24-5790	Weight - Rear	1
71		Spacer	2
72	3217-9	Nut	2



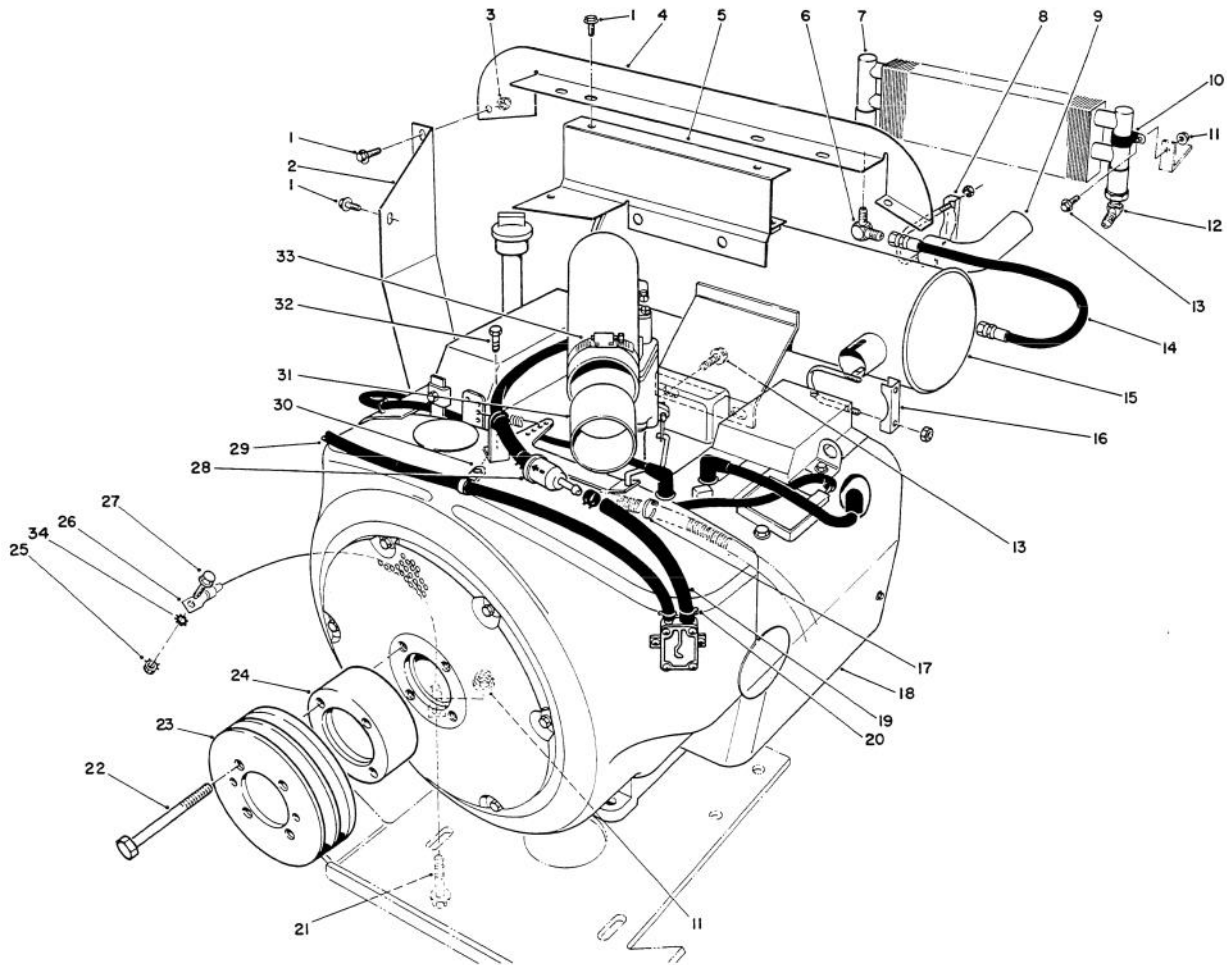
T-0687

## ELECTRICAL SCHEMATIC

Ref. No.	Part No.	Description	No. Used
1	86-9470	Harness - Wire (Incl. Ref. #2)	1
2	86-7470	Diode	1
3	27-5090	Wire - Battery Ground	1
4	72-4020	Housing - Tab	1
*	72-4040	Terminal - Tab	4

Ref. No.	Part No.	Description	No. Used
5	72-4010	Housing - Receptacle	1
*	72-4000	Terminal - Receptacle	5
*	72-4030	Housing	1
*	71-6070	Harness - Wiring	1
*	72-3990	Terminal - Ring	1
*	28-1280	Boot - Battery Cable	1

\*Not Illustrated

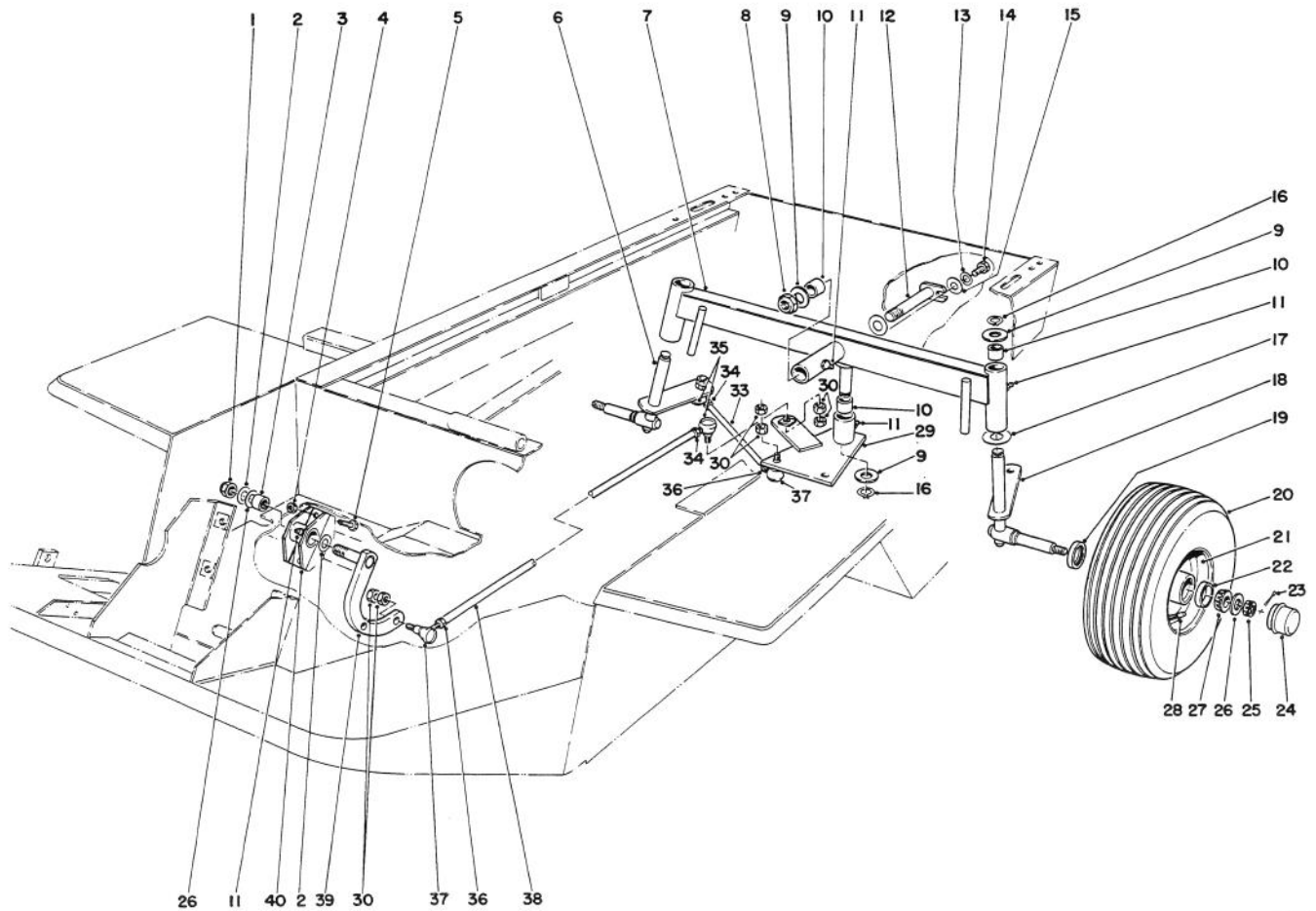


T-0688

## ENGINE ASSEMBLY

Ref. No.	Part No.	Description	No. Used	Ref. No.	Part No.	Description	No. Used
1	3234-13	Screw - Hex Flange. Hd.	10	18	70-2590	Engine - Onan (Model No. P220G-I/10808D)	1
2	44-8690	Shield - Heat	1	19	59-0710	Hose - Fuel	1
3	3296-16	Nut - Lock	1	20	2412-36	Clamp - Hose	5
4	44-8710	Shroud - Engine	1	21	3234-18	Screw - Hex. Flange Hd.	2
5	44-9010	Bracket - Shield Support	1	22	3235-23	Screw - Cap Hex. Hd.	4
6	353-428	Elbow - Male 90°	1	23	43-5340	Pulley - Engine	1
7	22-7320	Cooler - Oil	1	24	71-0700	Spacer	1
8	2112-9	Clamp	1	25	32149-2	Nut - Lock	1
9	72-7930	Extension	1	26	10-7160	Assembly - Wire	2
10	2412-39	Clamp - R	2	27	3234-4	Screw - Flange Hex. Hd.	1
11	3290-357	Nut - Flange Lock	4	28	71-5960	Filter - Fuel	1
12	353-714	Elbow - Male 45°	1	29	71-3370	Line - Fuel	1
13	3234-11	Screw - Flange Lock	4	30	2412-142	"R" Clamp	1
14	44-9020	Oil Hose Assembly	1	31	44-9450	Adapter - Air Inlet	1
15	72-7920	Muffler	1	32	49-2040	Screw - Self Tapping	1
*	46-2390	Muffler - Spark Arrester (Optional)	1	33	2412-42	Clamp - Hose	1
16	2412-37	Clamp - Muffler	2	34	3255-7	Washer - Ent. Tooth	1
17	3290-378	Tie - Cable	3				

\*Not Illustrated



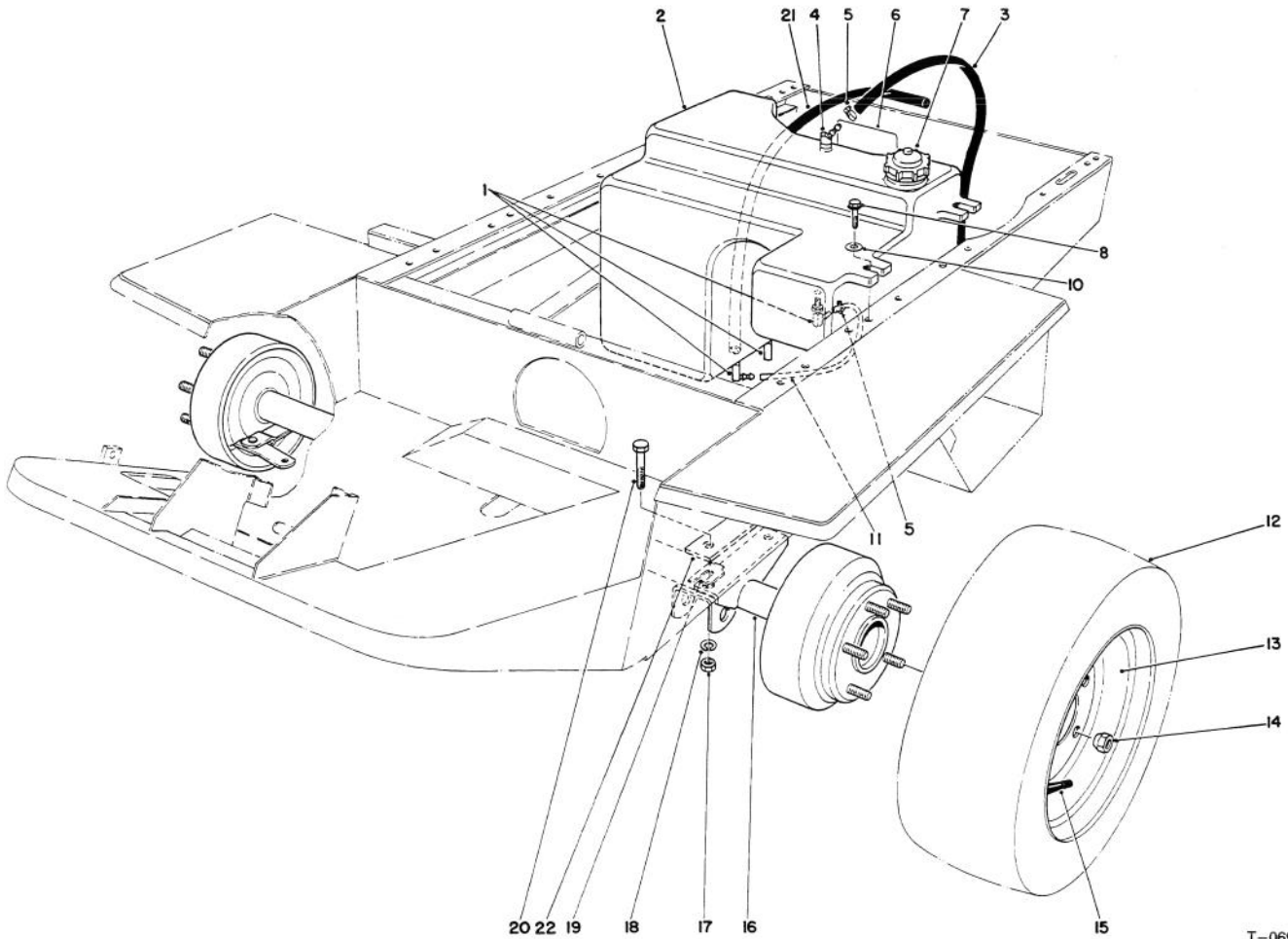
T-0697

## REAR AXLE ASSEMBLY

Ref. No.	Part No.	Description	No. Used
1	3296-15	Nut - Lock	1
2	3-6514	Washer - Thrust	2
3	252-6	Bearing	2
4	3296-44	Nut - Lock	2
5	323-5	Screw - Cap Hex. Hd.	2
6	39-8900	Spindle - R.H.	1
7	44-9090	Axle - Rear (Incl. Ref. #10 & 11)	1
8	3296-49	Nut - Lock	1
9	10-8110	Washer	4
10	3-0348	Bushing	8
11	302-5	Fitting - Grease	4
12	27-4060	Pin - Rear Axle	1
14	3234-13	Screw - Hex. Flange Hd.	1
16	32151-36	Ring - Retaining	3
17	256-121	Bushing	2
18	39-8850	Spindle - L.H.	1
19	253-129	Seal - Oil	2
20	231-104	Tire	2
*	232-39	Tube - Inner (Optional)	2

Ref. No.	Part No.	Description	No. Used
21	217-108	Rim (Incl. Ref. #22)	2
22	254-72	Cup - Bearing	4
23	3272-13	Pin - Cotter	2
24	241-119	Cap - Dust	2
25	32136-5	Nut - Hex. Castle	2
26	3256-28	Washer - Flat	3
27	254-94	Cone - Bearing	4
28	232-35	Valve Stem w/Cap	2
29	44-9120	Steering Plate Assembly (Incl. Ref. #10 & 11)	1
30	3220-3	Nut - Jam	12
33	27-4090	Rod - Tie	2
34	3220-12	Nut - Hex. Jam	3
35	21-0151	Socket Assembly L.H.	3
36	3220-5	Nut - Hex. Jam	3
37	21-0141	Socket Assembly R.H.	3
38	44-9110	Tube - Steering	1
39	27-5230	Arm - Pivot	1
40	27-3640	Pivot Mount Assembly (Incl. Ref. #3 & 11)	1

\*Not Illustrated



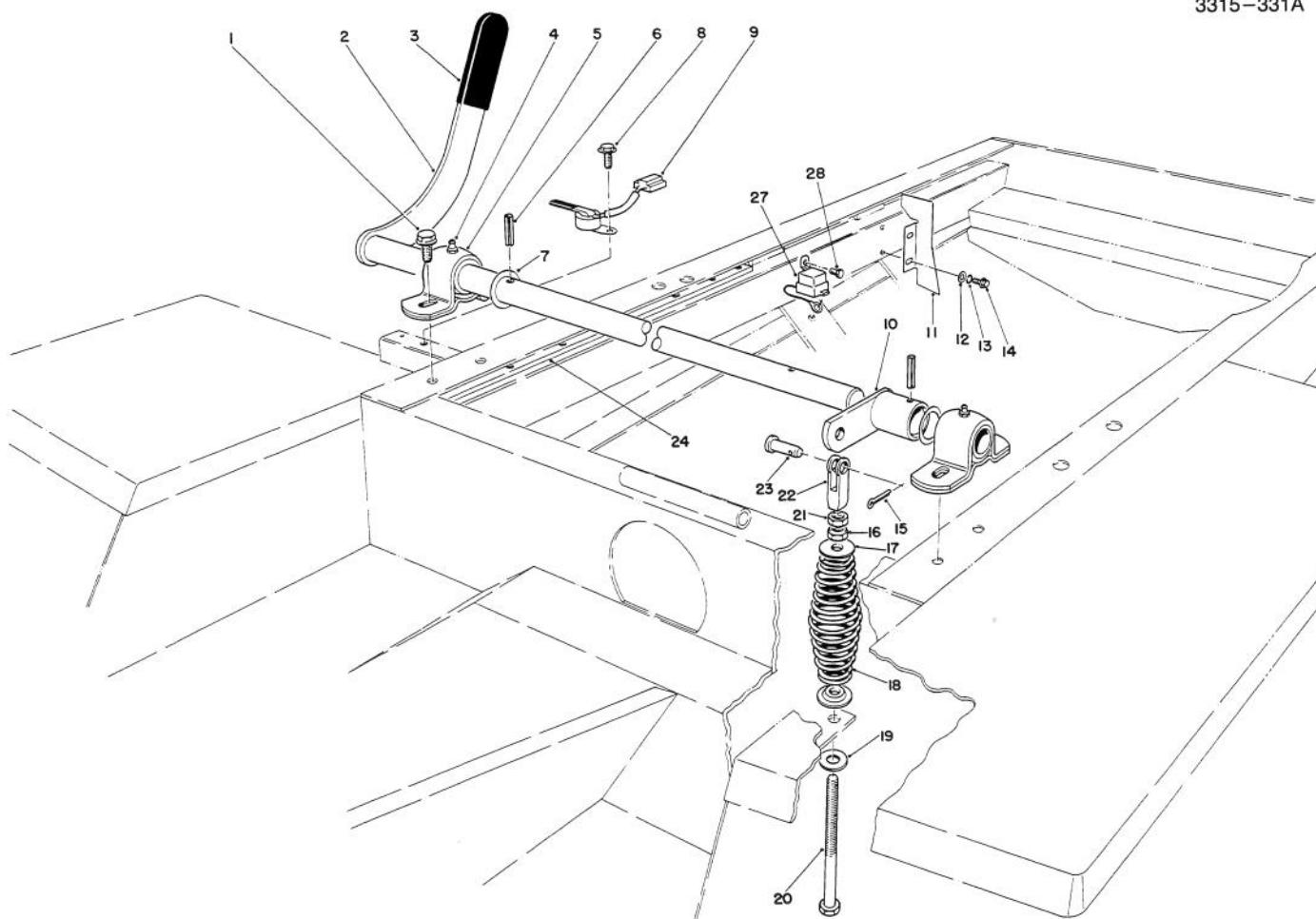
T-0696

## FUEL TANK & AXLE ASSEMBLY

Ref. No.	Part No.	Description	No. Used
1	353-536	Elbow - 90°	3
2	43-5350	Tank - Fuel (Incl. Ref. #1 & 3)	1
3	37-9920	Hose	1
4	353-705	45° Elbow	1
5	2412-36	Clamp - Worm Drive	5
6	43-8480	Decal - Danger	1
7	55-3574	Cap - Fuel	1
8	3234-18	Screw - Cap Hex. Hd.	3
10	3256-41	Washer - Flat	3
11	61-9650	Hose - Fuel	1
12	231-103	Tire	2

Ref. No.	Part No.	Description	No. Used
13	217-107	Rim	2
14	242-35	Nut - Hex.	10
15	232-35	Valve Stem w/Cap	2
16	86-9660	Axle Assembly	1
17	3217-8	Nut - Hex.	4
18	3253-6	Washer - Lock	4
19	42-6080	Shim - Axle	A/R
20	324-9	Screw - Cap Hex. Hd.	4
21	71-3370	Hose - Fuel	1
22	92-6312	Spacer	2
*	232-43	Tube - Inner (Optional)	2

\*Not Illustrated

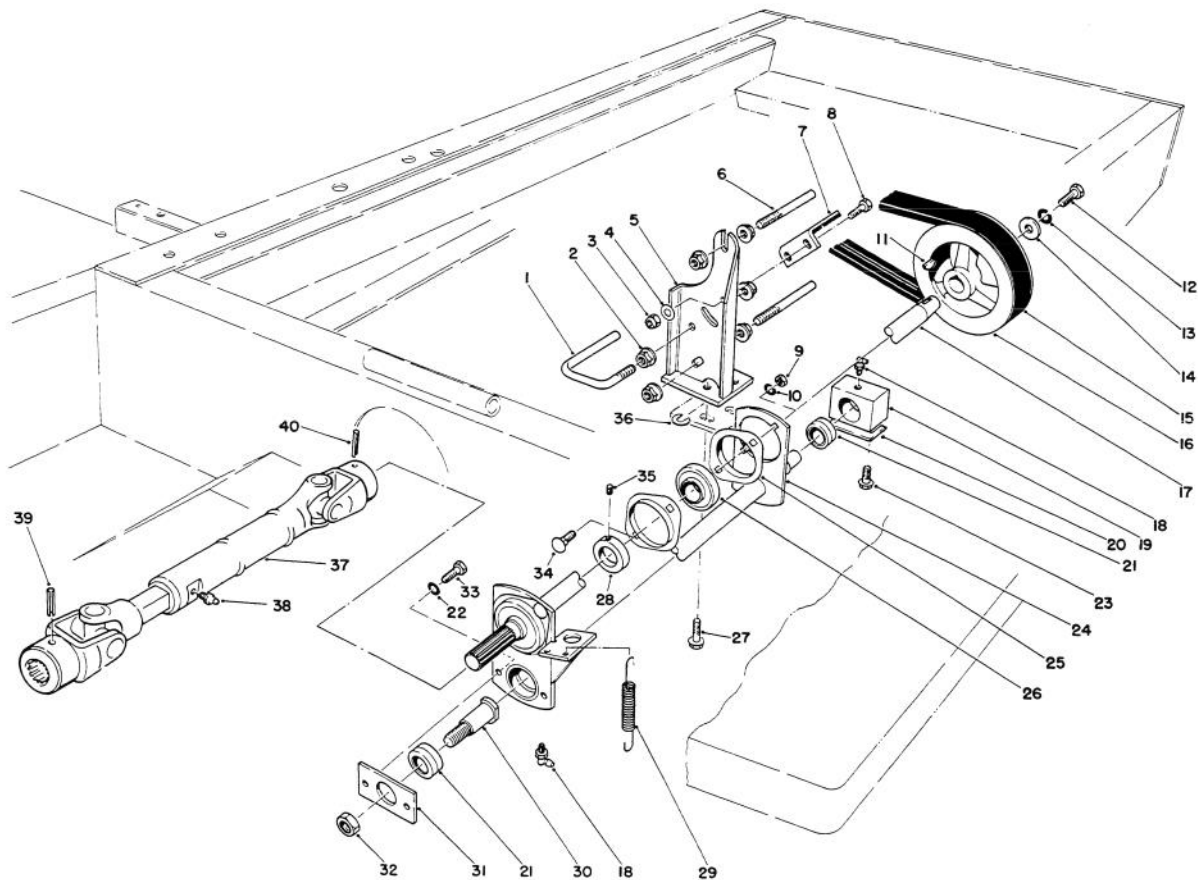


T-0695

## POWER TAKE-OFF LEVER ASSEMBLY

Ref. No.	Part No.	Description	No. Used
1	3234-4	Screw - Hex. Flange Hd.	4
2	27-4910	Lever - Power Take-Off	1
3	21-1880	Grip - Handle	1
4	302-5	Fitting - Grease	2
5	251-269	Bearing - Pillow Block	2
6	32121-31	Pin - Roll	2
7	3-6514	Washer	2
8	32104-116	Screw - Flange Hex. Hd.	1
9	29-6930	Arm - Switch	1
10	47-4780	Arm - Engagement	1
11	44-8680	Shield - Heat	1
12	3256-23	Washer - Flat	2
13	3253-4	Washer - Lock	2

Ref. No.	Part No.	Description	No. Used
14	32144-11	Screw - Self Tap. Hex. Hd.	2
15	3272-5	Pin - Cotter	1
16	3296-5	Nut - Lock	1
17	44-8890	Retainer - Spring	2
18	44-8820	Spring - Compression	1
19	3256-41	Washer - Flat	1
20	27-7900	Screw - Adjusting	1
21	3220-3	Nut - Hex. Jam	1
22	281-1	Yoke	1
23	283-42	Pin - Clevis	1
24	37-7060	Bar - Frame Rail	2
27	63-7590	Relay	1
28	32104-17	Screw - Flange Hex. Hd.	1

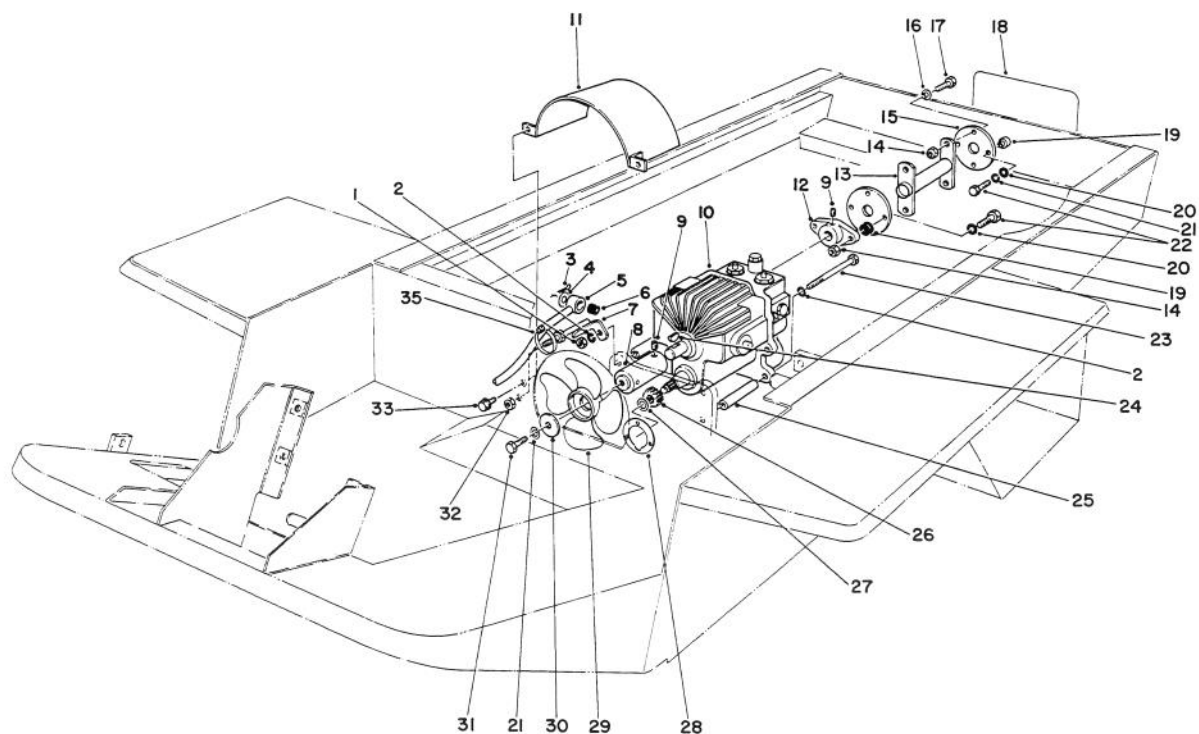


T-0694

## POWER TAKE-OFF ASSEMBLY

Ref. No.	Part No.	Description	No. Used
1	44-9220	Guide - Belt (Lower)	1
2	3290-357	Nut - Flange Lock	6
3	3296-29	Nut - Lock	2
4	3256-23	Washer - Flat	2
5	44-9310	Bracket - Brake	1
6	44-9230	Guide - Belt	2
7	44-9330	Support Pad Assembly Power Take-Off Brake	1
8	322-4	Screw - Cap Hex. Hd.	2
9	3217-6	Nut - Hex.	4
10	3253-4	Washer - Lock	4
11	3257-5	Key - Woodruff	1
12	323-18	Screw - Cap Hex. Hd.	1
13	3253-21	Washer - Lock	1
14	29-4730	Washer	1
15	44-8990	V-Belt - Torque Team	1
16	43-5320	Pulley - P.T.O.	1
17	27-4980	Shaft - P.T.O.	1
18	302-40	Fitting - Grease	2
19	28-9050	Hub - Bearing	1
20	47-4760	Shim - P.T.O. Block	1

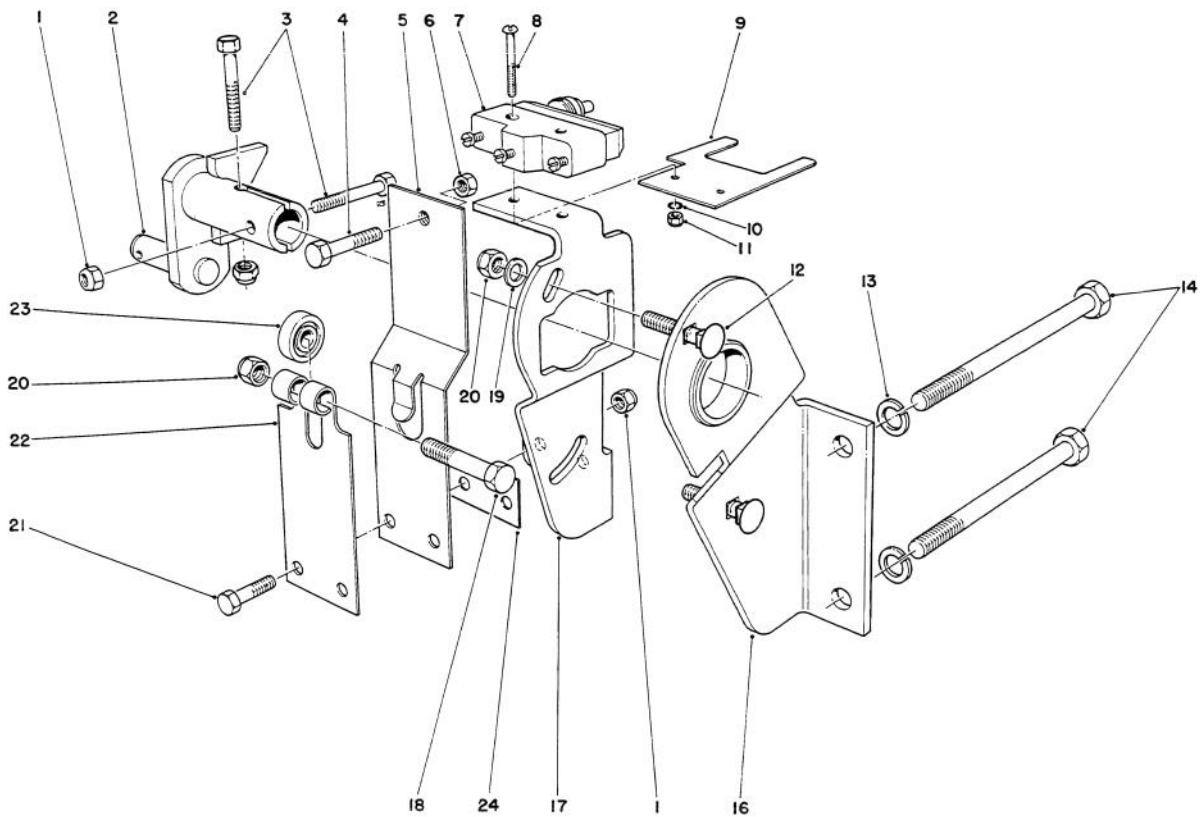
Ref. No.	Part No.	Description	No. Used
21	251-268	Bearing	2
22	3253-3	Washer - Lock	2
23	3234-21	Screw - Hex. Flange Hd.	2
24	44-9350	Arm - Engagement	1
25	251-255	Bearing - Flange	4
26	251-253	Bearing w/Collar (Incl. Ref. #28 & 35)	2
27	3234-11	Screw - Cap Hex. Hd.	3
28	251-77	Collar - Locking	2
29	28-8950	Spring - Extension	2
30	27-6970	Stud - Bearing	1
31	27-6650	Retainer - Bearing	1
32	3296-33	Nut - Lock	1
33	321-3	Screw - Cap Hex. Hd.	2
34	3230-16	Bolt - Carriage	4
35	3245-1	Screw - Set	2
36	28-5640	Washer - Special	A/R
37	27-4520	U/Joint Shaft Assembly	1
38	302-5	Fitting - Grease	1
39	32121-34	Pin - Roll	1
40	32121-119	Pin - Roll	1



T-0693

## TRANSMISSION & DRIVE COUPLING ASSEMBLY

Ref. No.	Part No.	Description	No. Used	Ref. No.	Part No.	Description	No. Used
1	3217-7	Nut - Hex.	1	19	33-2020	Spacer	4
2	3253-21	Washer - Lock	3	20	3256-3	Washer - Flat	4
3	3272-10	Pin - Cotter	1	21	3253-4	Washer - Lock	2
4	3256-26	Washer - Flat	1	22	3210-8	Screw - Cap Hex. Hd.	4
5	27-4160	Tube - Pump Control	1	23	323-38	Screw - Cap Hex. Hd.	2
6	23-2270	Bushing - Rubber	1	24	3257-5	Key - Woodruff	2
7	27-5310	Support - Axle	1	25	27-3680	Spacer - Mounting	4
8	27-4340	Assembly - Hub & Plug	1	26	86-7220	Gear - Spur	1
9	3245-1	Screw - Set	4	27	32120-72	Ring - Retaining	1
10	49-7910	Transmission	1	28	27-3690	Gasket - Transmission	1
11	27-3270	Shroud - Fan	1	29	27-3740	Fan	1
12	24-4370	Hub - Pump	1	30	27-4360	Washer	1
13	44-8720	Shaft - Drive	1	31	322-5	Screw - Cap Hex. Hd.	1
14	32152-5	Nut - Lock	6	32	3218-5	Nut - Hex. Jam	2
15	44-2230	Coupling - Rubber	2	33	3234-13	Screw - Hex. Flange Hd.	2
16	27-6600	Spacer - Rubber Coupling	4	35	3290-378	Tie - Cable	1
17	3210-5	Screw - Cap Hex. Hd.	4				

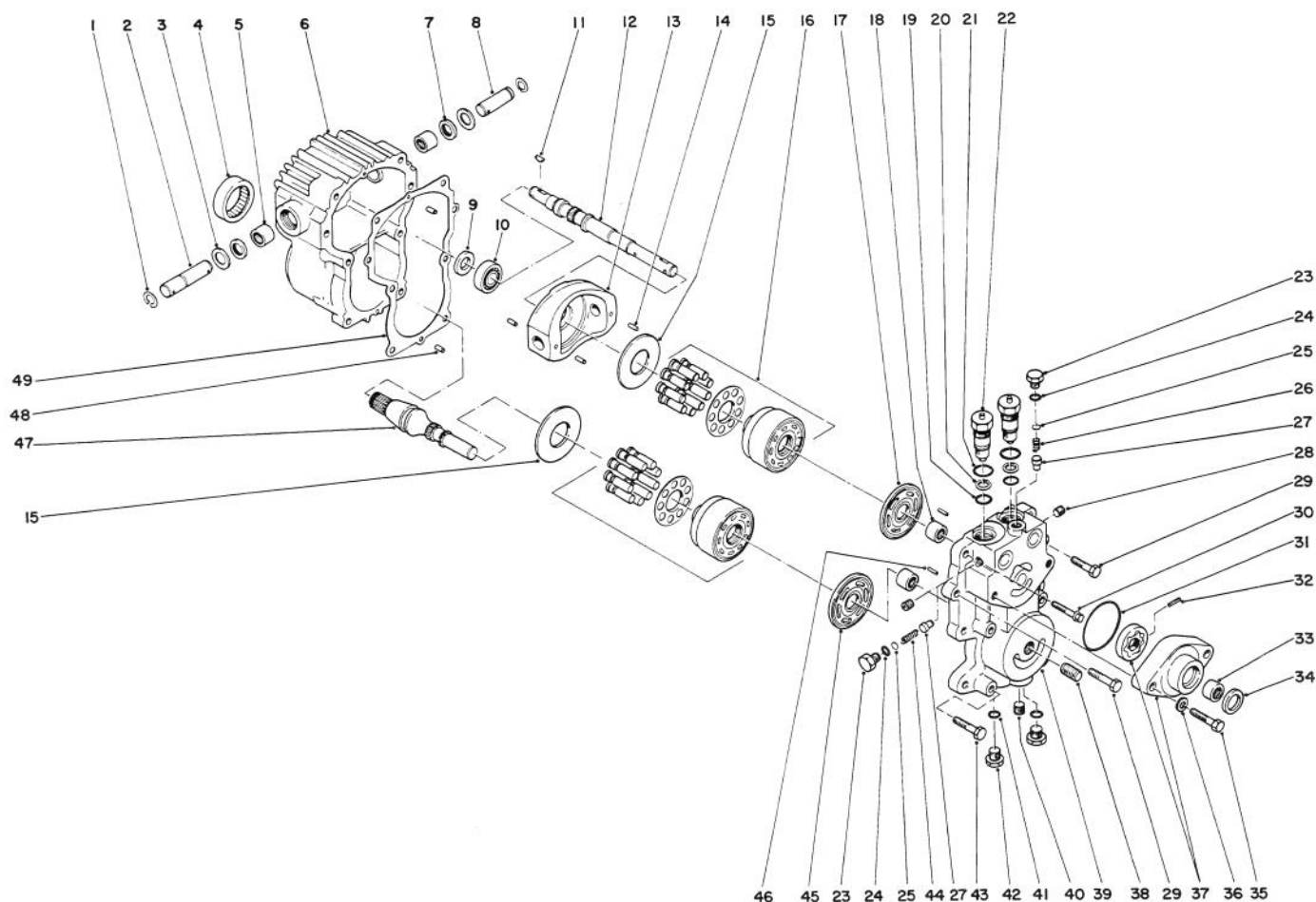


T-0538

## TRANSMISSION INTERLOCK ASSEMBLY

Ref. No.	Part No.	Description	No. Used
1	3296-42	Nut - Lock	4
2	29-9790	Pump - Lever	1
3	321-9	Screw - Cap Hex. Hd.	2
4	3210-7	Screw - Cap Hex. Hd.	1
5	29-6170	Spring - Extended Leaf	1
6	3219-2	Nut - Hex.	1
7	29-6163	Micro Switch	1
8	3249-11	Screw - Round Hd.	2
9	46-8810	Stop - Leaf Spring	1
10	3254-9	Washer - Int. Tooth	2
11	3217-16	Nut - Hex.	2
12	3230-2	Carriage - Bolt	2

Ref. No.	Part No.	Description	No. Used
13	3253-21	Washer - Lock	2
14	323-39	Screw - Cap Hex. Hd.	2
16	52-8890	Bracket - Mounting	1
17	52-9070	Plate - Pump	1
18	322-17	Screw - Cap Hex. Hd.	1
19	3256-2	Washer - Flat	2
20	3296-29	Nut - Lock	3
21	321-4	Screw - Cap Hex. Hd.	2
22	29-6150	Spring - Leaf	1
23	251-259	Bearing - Ball	1
25	51-3150	Shim	1

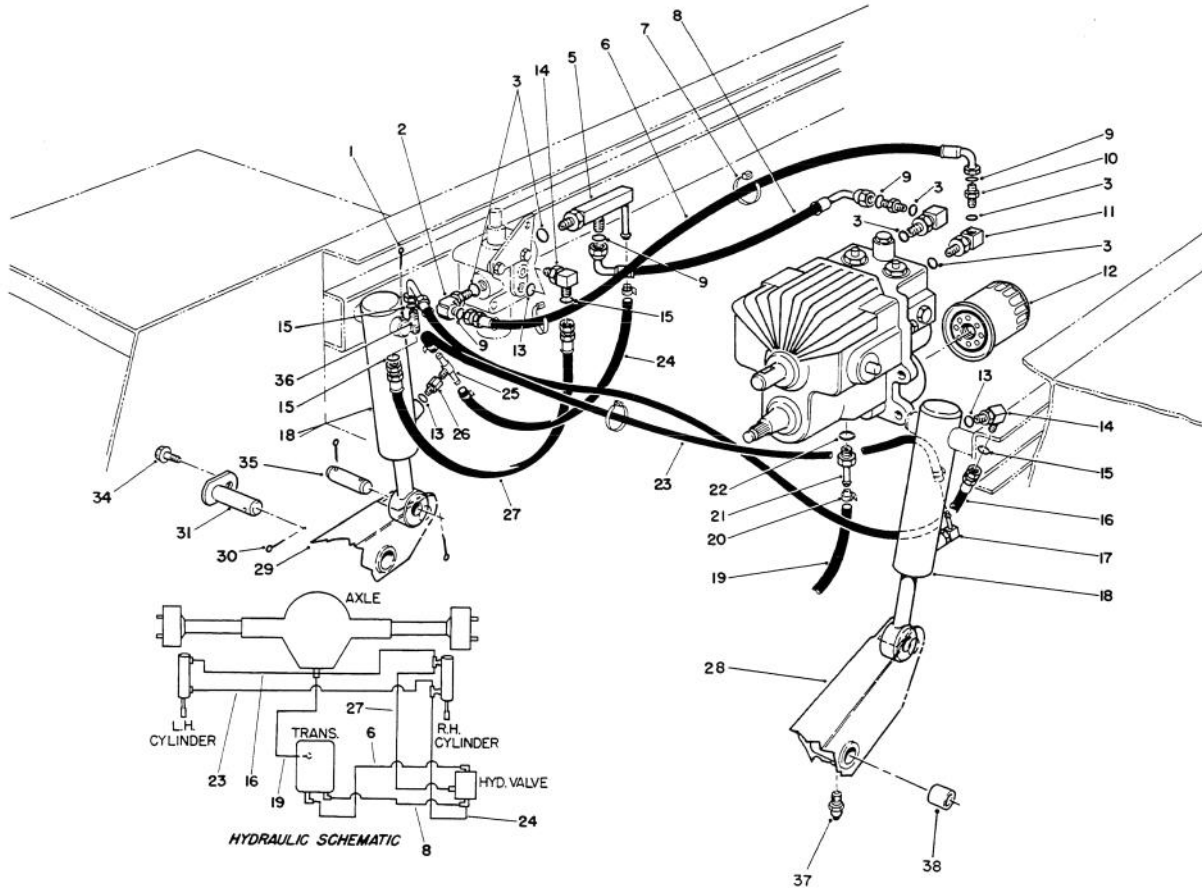


T-0536

## TRANSMISSION ASSEMBLY NO. 49-7910

Ref. No.	Part No.	Description	No. Used
1	32151-46	Ring - Retaining	2
2	25-2500	Shaft - Trunion	1
3	25-2510	Washer	2
4	28-3300	Bearing - Roller	1
5	28-3310	Bearing - Needle	2
6	49-7870	Housing	1
7	25-3210	Lip Seal	2
8	28-3670	Shaft - Trunion	1
9	28-3660	Lip Seal	1
10	28-3650	Bearing - Ball	1
11	3257-5	Key - Woodruff	2
12	28-3640	Shaft - Pump	1
13	49-7820	Variable Swashplate	1
14	32121-91	Pin	3
15	25-2380	Plate - Thrust	2
16	48-1800	Kit - Cylinder Block	2
17	46-7320	Plate - Pump Valve	1
18	25-3300	Bearing - Needle	2
19	28-3590	O-Ring	2
20	28-3580	Ring - Backup	2
21	28-3570	O-Ring	2
22	49-7830	Assembly - Check Valve (Incl. Ref. #19-21)	2
23	25-2460	Hex Hd. Plug	2
24	28-3400	O-Ring	2
25	25-2470	Shim Pack	A/R

Ref. No.	Part No.	Description	No. Used
26	46-7310	Relief Valve Spring Imp.	1
27	28-3420	Relief Valve Cone Charge	2
28	285-17	Plug - Pipe	4
29	323-8	Screw - Cap Hex. Hd.	2
30	28-3530	Screw - Cap Hex. Hd.	2
31	28-3520	O-Ring	1
32	38-2680	Pin	1
33	28-3480	Bearing - Needle	1
34	28-3470	Lip Seal	1
35	324-23	Screw - Cap Hex. Hd.	2
36	28-3450	Washer - Flat	2
37	38-2670	Kit - Charge Pump (Incl. Ref. #31-34)	1
38	25-2660	Union - Filter	1
39	49-7850	Center Section	1
40	46-7280	Plug - Pipe	1
41		O-Ring	2
42	28-3440	Threaded Plug (Incl. Ref. #41)	2
43	323-10	Screw - Cap Hex. Hd.	4
44	25-2480	Relief Valve Spring Charge	1
45	28-3380	Plate - Motor Valve	1
46	25-2430	Pin	2
47	49-8200	Shaft - Motor	1
48	28-3350	Pin	2
49	28-3340	Gasket	1

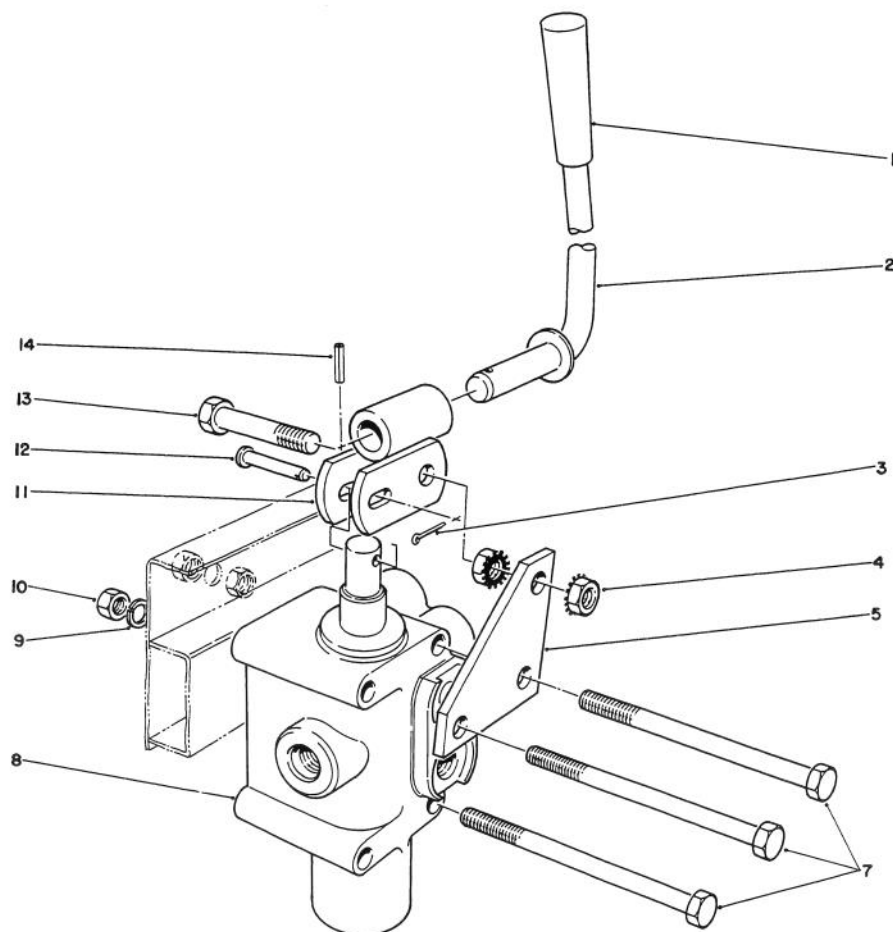


T-0691

## HYDRAULIC VALVE & LIFT ARM CYLINDERS

Ref. No.	Part No.	Description	No. Used
1	3272-23	Pin - Cotter	6
2	340-77	90° Elbow	1
3	237-42	O-Ring	6
5	71-0590	Assembly - Fitting	1
6	71-0670	Hose - Trans. to Valve	1
7	3290-378	Tie - Cable	3
8	66-8190	Hose	1
9	237-22	O-Ring	4
10	82-8530	Fitting - Straight	2
11	66-3110	Fitting	2
12	23-2300	Filter - Oil	1
13	237-78	O-Ring	3
14	71-3270	90° Elbow	2
15	237-150	O-Ring	4
16	71-0680	Hose	1
17	304-99	90° Barb Hose Stem	1
18	68-9700	Assembly - Hyd. Cylinder	2
19	66-8130	Hose	1

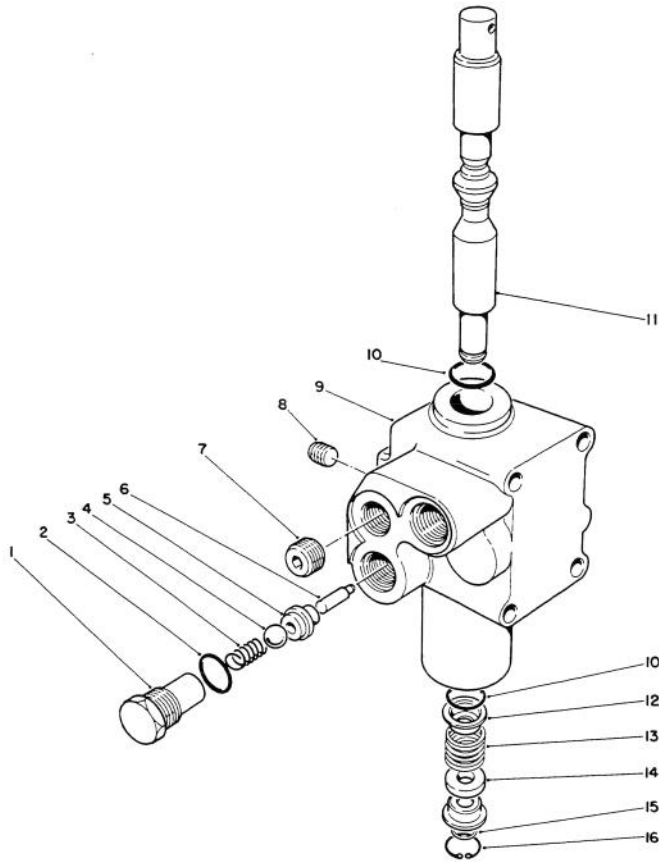
Ref. No.	Part No.	Description	No. Used
20	2412-36	Clamp - Worm Drive	4
21	354-24	Fitting (Incl. Ref. #22)	1
22	237-80	O-Ring	1
23	27-4480	Hose - Pressure, Low	1
24	71-3770	Hose - Pressure, Low	1
25	353-567	Fitting - Tee, Male	1
26	353-565	Fitting - Connector	1
27	71-0690	Hose - Cyl. Tee to Valve	1
28	76-3090	Arm - Lift, L.H.	1
29	76-3080	Arm - Lift, R.H.	1
30	3272-17	Pin - Cotter	2
31	27-4310	Pin - Pivot	2
34	3232-13	Screw - Hex. Flange Hd.	2
35	27-4240	Pin - Cylinder	2
36	340-125	Fitting - Tee, Adjustment	1
37	302-62	Fitting - Grease	2
38	256-101	Bushing	4



T-0704

## VALVE & LEVER ASSEMBLY

Ref. No.	Part No.	Description	No. Used	Ref. No.	Part No.	Description	No. Used
1	233-39	Knob	1	9	3253-3	Washer - Lock	2
2	27-4200	Lever - Valve	1	10	32128-33	Nut - Hex. Flange Hd.	4
3	3272-6	Pin - Cotter	1	11	27-4220	Link - Lever, Valve	1
4	32149-2	Nut - Lock	2	12	283-17	Pin - Clevis	1
5	27-4230	Bracket - Valve	1	13	321-10	Screw - Cap Hex. Hd.	1
7	321-24	Screw - Cap Hex. Hd.	3	14	32121-73	Pin - Roll	1
8	43-1700	Valve - Hydraulic	1				

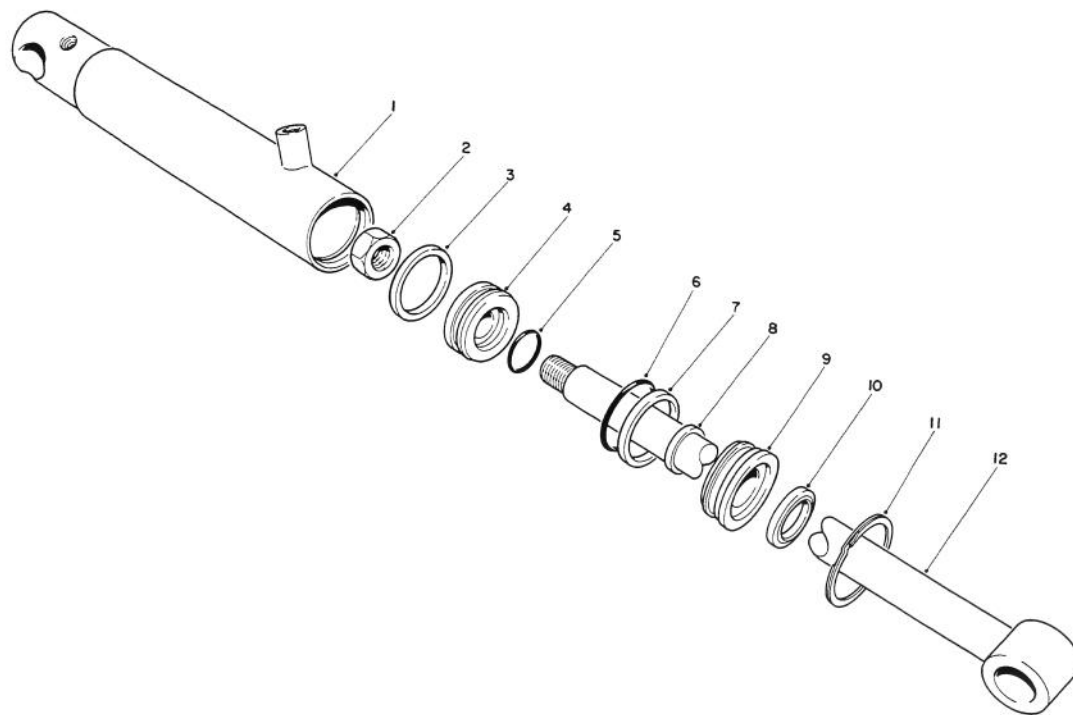


T-0692

### VALVE ASSEMBLY NO. 43-1700

Ref. No.	Part No.	Description	No. Used
1	22-8330	Plug	1
2	237-42	O-Ring	1
3	22-8340	Spring	1
4	22-8350	Ball	1
5	22-8370	Seat - Check Valve	1
6	22-8360	Pin - Cam	1
7	28-1130	Plug	1
8	28-1120	Plug	1

Ref. No.	Part No.	Description	No. Used
9		Body	1
10	22-8500	O-Ring	2
11	27-5210	Spool	1
12	22-8380	Retainer - Spring	2
13	22-8410	Spring	1
14	27-5200	Spacer - Float	1
15	22-8480	Snap Ring - Spool	1
16	22-8490	Ring - Retaining	1



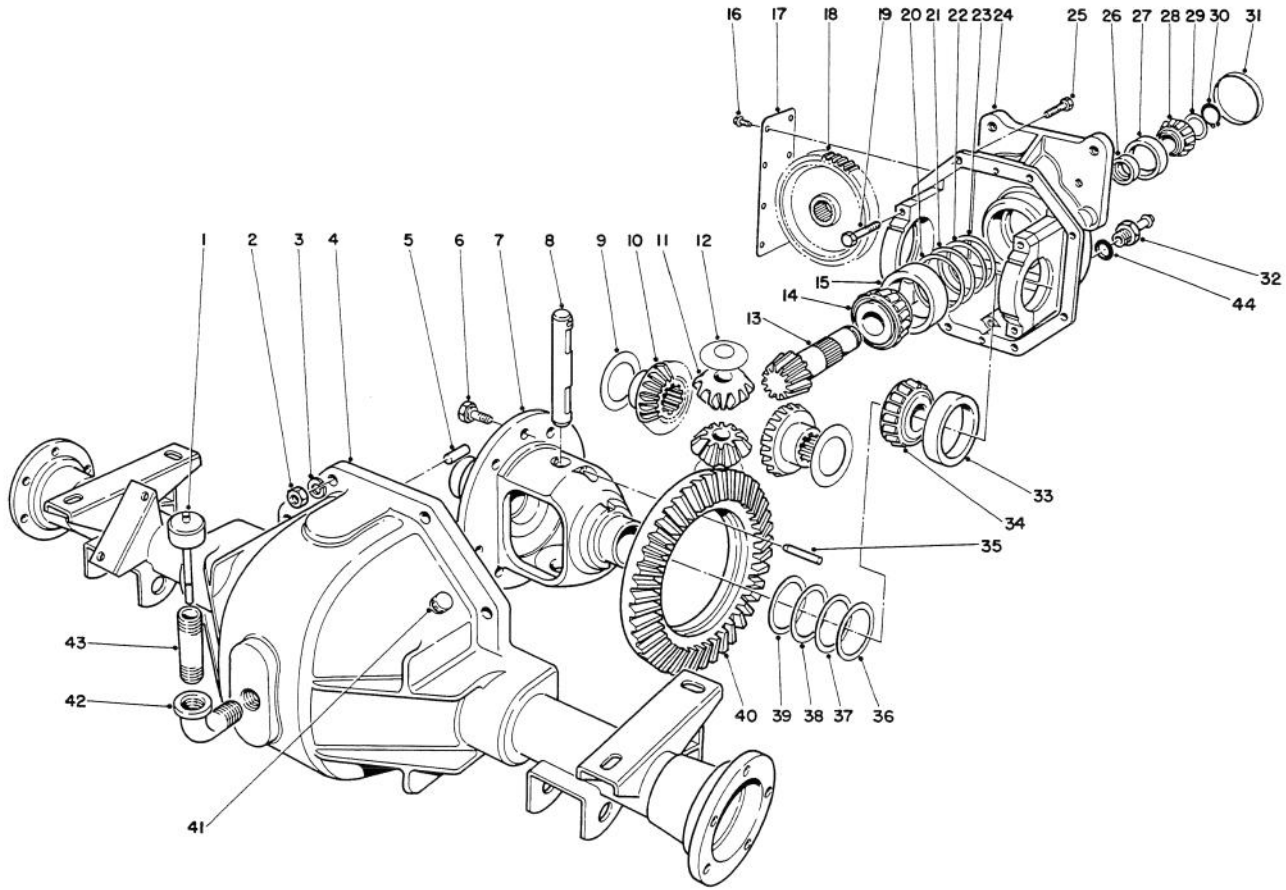
T-0689

## HYDRAULIC CYLINDER NO. 68-9700

Ref. No.	Part No.	Description	No. Used
1		Assembly - Tube	1
2	32152-10	Nut - Jam	1
3		Uniring	3
4	70-2780	Piston	1
5		O-Ring	1
6		O-Ring, Head Backup	2
7			1

Ref. No.	Part No.	Description	No. Used
8		Poly-Pack	1
9	70-2770	Head	1
10		Seal - Dust	1
11	43-5220	Ring - Retaining	1
12	43-5230	Shaft w/Clevis	1
*	70-2790	Kit - Seal Repair (Incl. Ref. #3, 5-8 & 10)	1

\*Not Illustrated



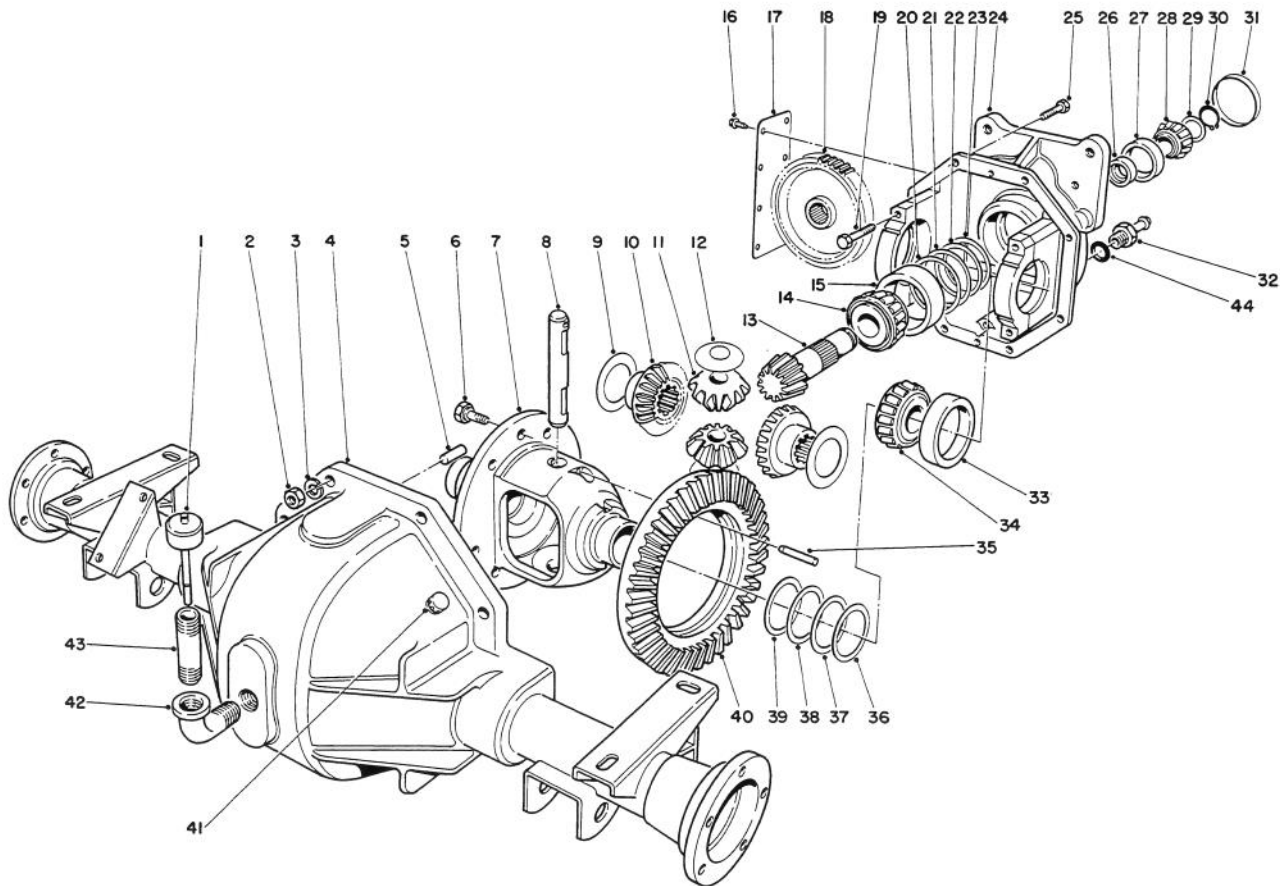
T-0690

## DIFFERENTIAL ASSEMBLY

Ref. No.	Part No.	Description	No. Used
1	27-3710	Dipstick	1
2	3219-2	Nut	8
3	3255-8	Washer - Lock	8
4	43-6850	Assembly - Lower Housing	1
5	21-8270	Pin - Dowel	2
6	21-7770	Screw - Drive Gear	5
7	21-7670	Case - Differential	1
8	21-7700	Shaft - Pinion Mate	1
9	21-7720	Washer - Thrust	2
10	24-8790	Gear - Bevel Diff. Side	2
11	21-7690	Gear - Pinion	2
12	21-7730	Washer - Thrust	2
13		Pinion - Drive (Incl. Ref. #40)	1
14	43-6760	Cone - Bearing	1
15	43-6750	Cup - Bearing	1
16	12-5450	Screw - Thread Forming	8
17	21-7830	Cover - Gear	1
18	86-7230	Gear - Spur	1
19	324-23	Screw - Cap Hex. Hd.	4
20	43-6710	Shim - Adjusting .003	A/R
21	43-6711	Shim - Adjusting .005	A/R
22	43-6712	Shim - Adjusting .010	A/R
23	43-6713	Shim - Adjusting .030	A/R
24	86-7930	Upper Housing Assembly (Incl. Ref. #19)	1

Ref. No.	Part No.	Description	No. Used
25	3210-7	Screw - Cap Hex. Hd.	8
26	21-8020	Spacer - Bearing Frt. Pinion	1
27	254-90	Cup - Bearing	1
28	254-91	Cone - Bearing	1
29	46-2210	Shim - Front Pinion Bearing (.031)	A/R
*	46-2211	Shim - Front Pinion Bearing (.033)	A/R
*	46-2212	Shim - Front Pinion Bearing (.035)	A/R
*	46-2213	Shim - Front Pinion Bearing (.037)	A/R
*	46-2214	Shim - Front Pinion Bearing (.039)	A/R
*	46-2215	Shim - Front Pinion Bearing (.041)	A/R
*	46-2216	Shim - Front Pinion Bearing (.043)	A/R
*	46-2220	Shim - Front Pinion Bearing (.045)	A/R
*	46-2221	Shim - Front Pinion Bearing (.047)	A/R
*	46-2222	Shim - Front Pinion Bearing (.049)	A/R
*	46-2223	Shim - Front Pinion Bearing (.051)	A/R

\*Not Illustrated



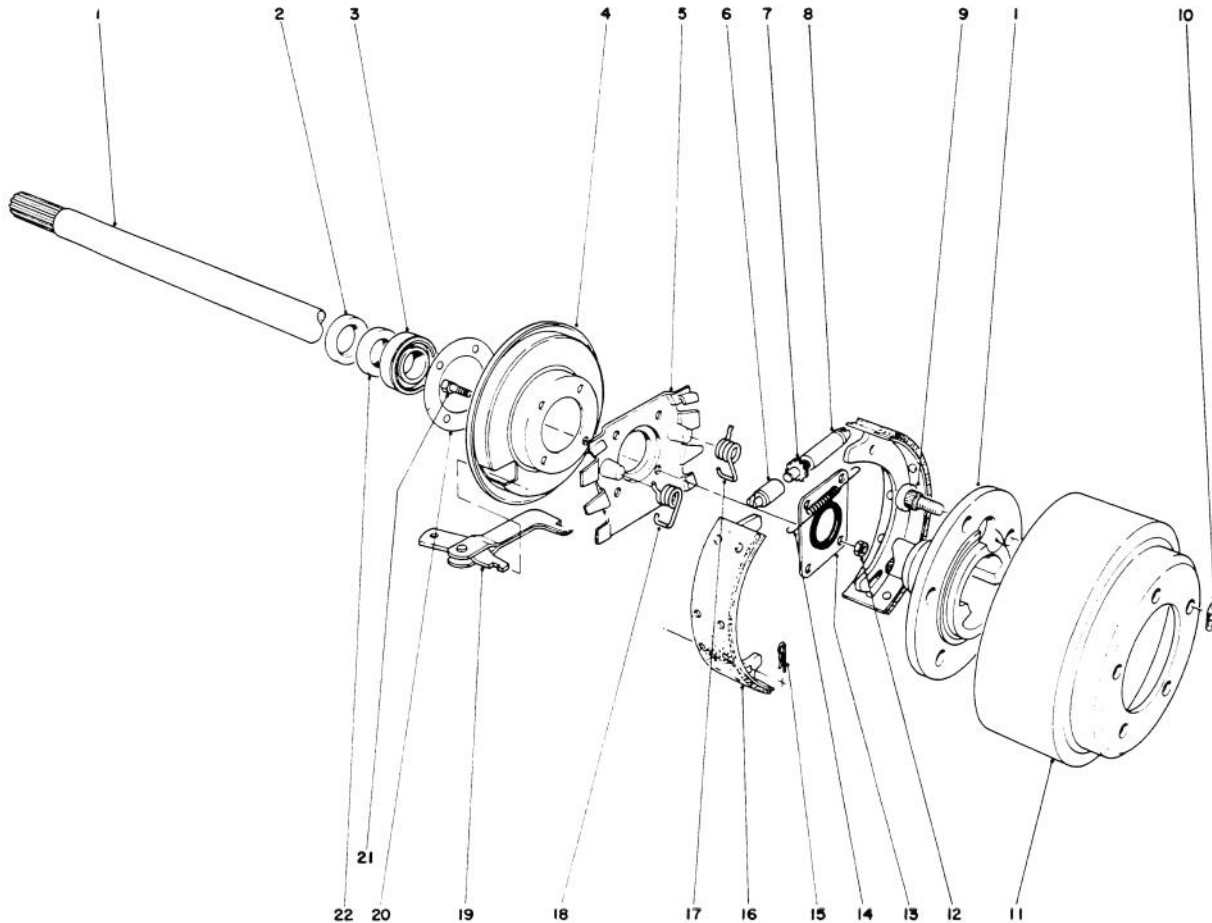
T-0690

## DIFFERENTIAL ASSEMBLY (Continued)

Ref. No.	Part No.	Description	No. Used
29	46-2224	Shim - Front Pinion Bearing (.053)	A/R
*	46-2225	Shim - Front Pinion Bearing (.055)	A/R
*	46-2226	Shim - Front Pinion Bearing (.057)	A/R
*	46-2410	Shim - Front Pinion Bearing (.062)	A/R
*	46-2411	Shim - Front Pinion Bearing (.064)	A/R
*	46-2412	Shim - Front Pinion Bearing (.066)	A/R
*	46-2413	Shim - Front Pinion Bearing (.068)	A/R
*	46-2414	Shim - Front Pinion Bearing (.070)	A/R
*	46-2415	Shim - Front Pinion Bearing (.072)	A/R
*	46-2416	Shim - Front Pinion Bearing (.074)	A/R
*	46-2420	Shim - Front Pinion Bearing (.076)	A/R
*	46-2421	Shim - Front Pinion Bearing (.078)	A/R
*	46-2422	Shim - Front Pinion Bearing (.080)	A/R

Ref. No.	Part No.	Description	No. Used
29	46-2423	Shim - Front Pinion Bearing (.082)	A/R
*	46-2424	Shim - Front Pinion Bearing (.084)	A/R
*	46-2425	Shim - Front Pinion Bearing (.086)	A/R
*	46-2426	Shim - Front Pinion Bearing (.088)	A/R
30	43-6550	Ring - Retaining	1
31	21-7850	Plug - Cap	1
32	354-18	Fitting - Hose Barb (Incl. Ref. #44)	1
33	254-66	Cup - Bearing Tapered	2
34	254-65	Cone - Bearing Tapered	2
35	32121-15	Pin - Roll	1
36	21-8090	Shim - Diff. Adjust. .003"	A/R
37	21-8100	Shim - Diff. Adjust. .005"	A/R
38	21-8110	Shim - Diff. Adjust. .010"	A/R
39	21-8120	Shim - Diff. Adjust. .030"	A/R
40		Gear - Ring	1
41	72-9420	Vent Tube Assembly	1
42	2811-9	Street Elbow 90°	1
43	289-38	Nipple - Pipe	1
44	237-81	Seal - O-Ring	1
*	43-6510	Gear & Pinion Assembly (Incl. Ref. #13 & 40)	1

\*Not Illustrated



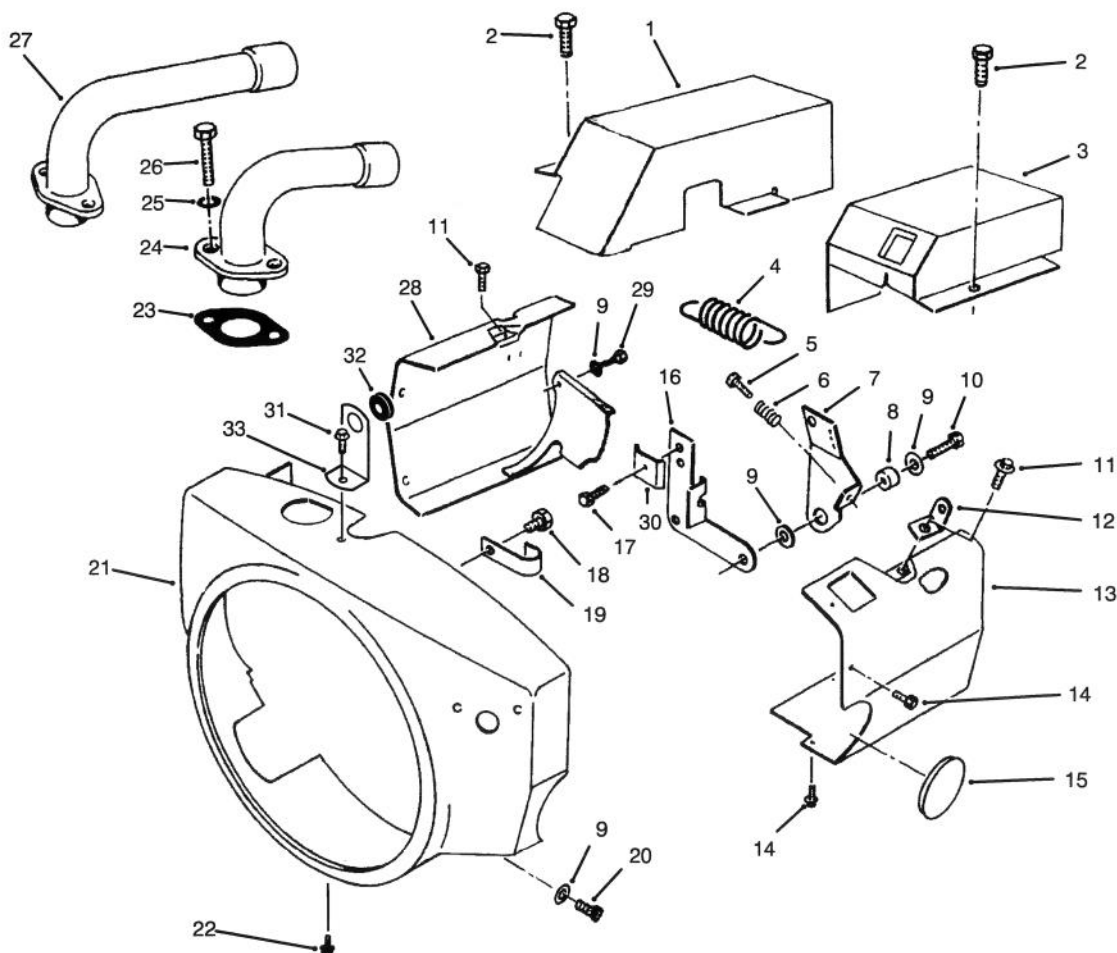
T-0535

## BRAKE ASSEMBLY

Ref. No.	Part No.	Description	No. Used
1	27-6860	Shaft - Axle L.H.	1
*	27-6850	Shaft - Axle R.H.	1
2	21-8330	Oil Seal	2
3	21-8180	Bearing - Tapered Roller	2
4	21-9450	Dust Shield	2
5	40-2190	Torque Spider	2
6	21-9390	Socket - Adjusting Screw	2
7	21-9370	Adjusting Screw	2
8	21-9380	Nut - Pivot	2
9	242-34	Stud - Axle Flange	10
10	21-8360	Clip - Retaining	2
11	28-0680	Brake Drum	2

Ref. No.	Part No.	Description	No. Used
12	43-6800	Nut - Lock, Flange Hd.	8
13	28-0670	Oil Seal	2
14	21-9440	Screw - Spring Adjusting	2
15	21-9460	Retainer - Parking Brake	4
16	43-2690	Assy. - Shoe & Lining	4
17	21-9420	Spring - Shoe Return L.H.	2
18	21-9430	Spring - Shoe Return R.H.	2
19	27-6880	Strut/Lever - Parking Brake	2
20	21-8320	Gasket - Wheel Bearing	2
21	28-0660	Screw - Cap Hex. Hd.	8
22	24-8840	Ring - Wheel Bearing	2
*	84-8600	Set - Brake Shoe (4 Shoes)	1

\*Not Illustrated



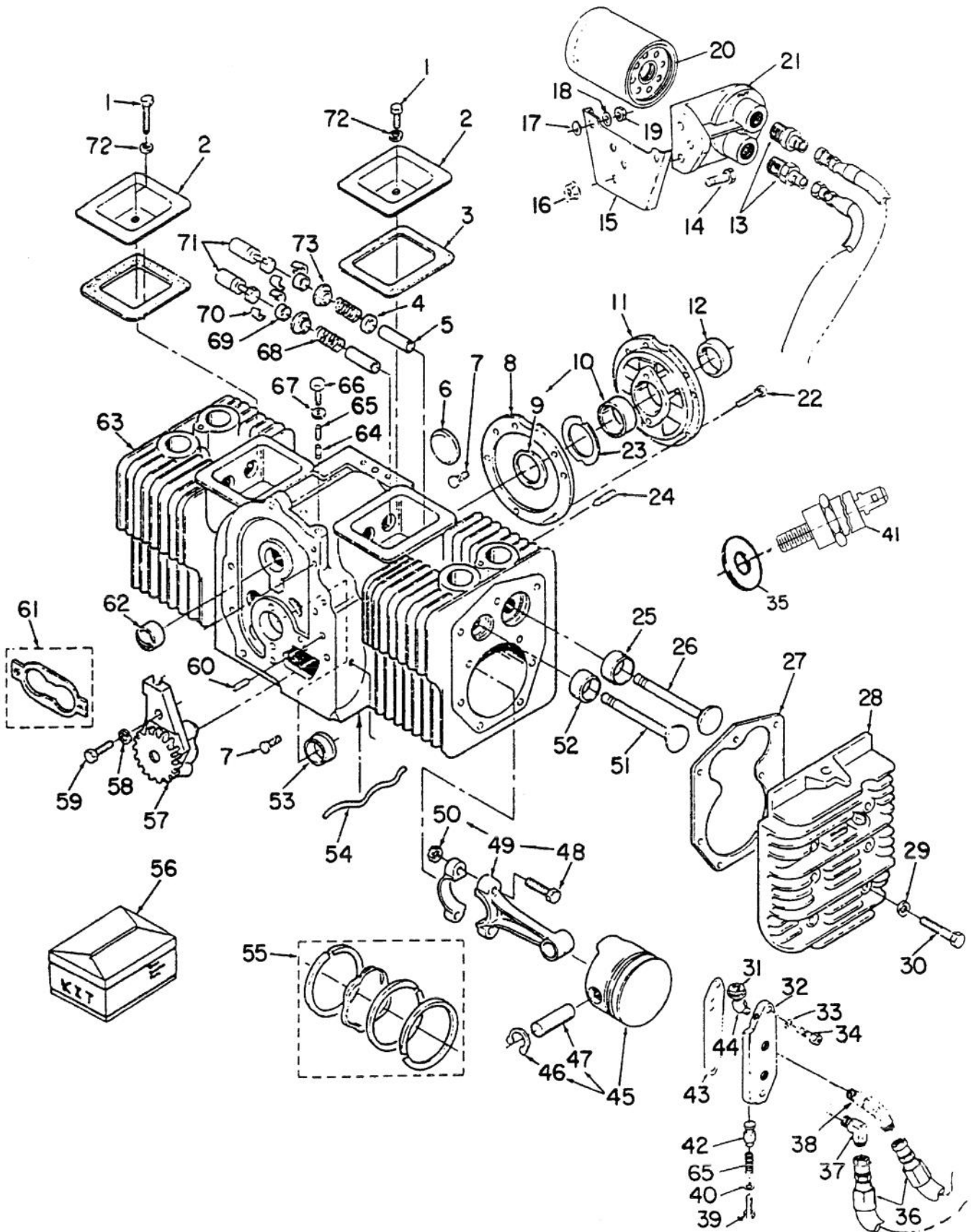
T-0755

## ENGINE AIR HOUSING – ONAN P220G TYPE I/10808D

Ref. No.	Part No.	Description	No. Used
1	72-3970	Cover – Exhaust Tube L.H.	1
2	59-1090	Screw – Hex. Washer Hd.	2
3	72-3980	Cover – Exhaust Tube R.H.	1
4	57-9100	Spring	1
5	59-1030	Screw – Self Tap. Hex. Hd.	1
6	59-0430	Spring – Idle Setting	1
7	57-9140	Arm – Governor Control	1
8	57-9120	Bushing	1
9	3256-1	Washer – Flat	8
10	59-1010	Screw – Hex. Flange Hd.	2
11	3234-5	Screw – Hex. Flange Hd.	2
12	59-0630	Bracket – Lift	2
13	71-5940	Housing – R.H.	1
14	59-1080	Screw – Hex. Flange Hd.	4
15	71-6150	Grommet – Air Seal	1
16	57-9150	Bracket – Cable	1
17	72-3900	Screw – Self Tap. Hex. Hd.	1

Ref. No.	Part No.	Description	No. Used
18	3234-13	Screw – Hex. Flange Hd.	1
19	71-6220	Clip – Wire	1
20	59-0980	Screw – Self Tap. Hex. Hd.	4
21	71-5930	Housing – Blower	1
22	59-0970	Screw – Self Tap. Hex. Hd.	1
23	57-9210	Gasket	2
24	57-9230	Outlet	1
25	3256-3	Washer – Flat	4
26	322-3	Screw – Cap Hex. Hd.	4
27	57-9240	Outlet	1
28	71-5910	Housing – L.H.	1
29	59-0980	Screw – Self Tap Hex. Hd.	2
30	57-9190	Clamp – Cable	1
31	49-2040	Screw – Self Tapping	1
32	71-6140	Grommet	1
33	71-5970	Bracket	1

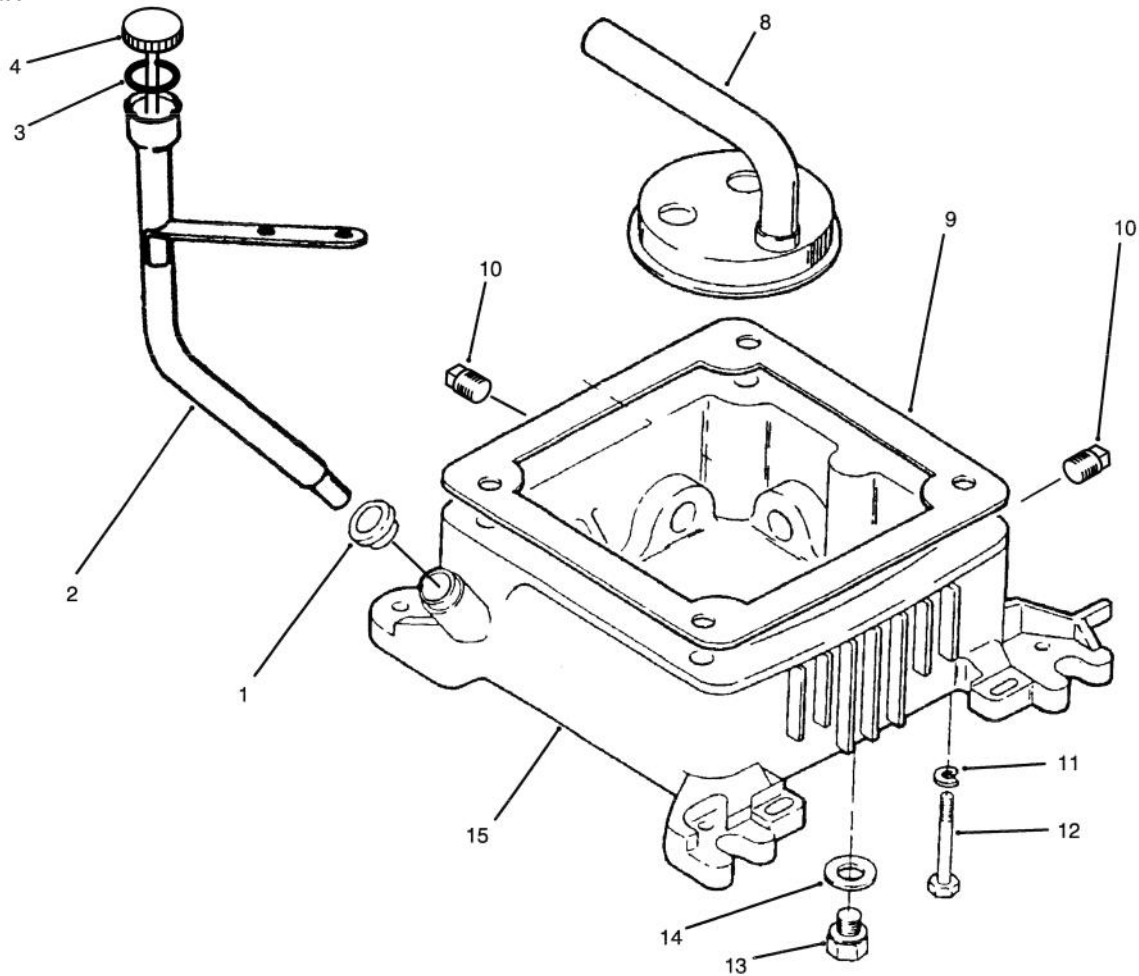
# CYLINDER BLOCK ASSY. ONAN P220G TYPE I/10808D



# CYLINDER BLOCK ASSY. ONAN P220G TYPE I/10808D

Ref. No.	Part No.	Description	No. Used	Ref. No.	Part No.	Description	No. Used
1	321-10	Screw - Cap Hex. Hd.	2	45	82-1810	Piston - .010" OS	
2	71-5850	Cover - Valve	2			(Incl. Ref. #46 & 47)	2
3	57-8280	Gasket - Valve Cover	2	*	82-1820	Piston - .020" OS	
4	71-6180	Seal - Intake Valve	2			(Incl. Ref. #46 & 47)	2
5	71-6250	Guide - Exhaust Valve	2	*	82-1830	Piston - .030" OS	
5	71-6260	Guide - Intake Valve	2			(Incl. Ref. #46 & 47)	2
6	57-9690	Plug - Welch	1	46	57-9720	Ring - Retaining	4
7	59-0730	Pin - Drive	4	47	71-6310	Pin - Piston	4
8	57-8010	Gasket	1	48	57-8410	Bolt - Special	4
9	57-8160	Washer - Thrust	2	49	57-8420	Rod - Connecting Std.	
10	57-8050	Bearing - Std. Crankshaft (Incl. Ref. #9)	1			(Incl. Ref. #48 & 50)	2
*	59-0020	Bearing - Crankshaft .002" undersize (Incl. Ref. #9)	1	*	57-8430	Rod - Conn. .010 undersize (Incl. Ref. #48 & 50)	2
*	57-8060	Bearing - Crankshaft .010" undersize (Incl. Ref. #9)	1	*	57-8440	Rod - Conn. .020 undersize (Incl. Ref. #48 & 50)	2
*	59-0030	Bearing - Crankshaft .020" undersize (Incl. Ref. #9)	1	*	59-0250	Rod - Conn. .030 undersize (Incl. Ref. #48 & 50)	2
*	59-0040	Bearing - Crankshaft .030" undersize (Incl. Ref. #9)	1	50	57-9790	Nut - Lock Hex. Crown	4
11	57-8040	Plate - Bearing	1	51	71-5780	Valve - Exhaust	2
12	57-9590	Seal - Oil	1	52	59-0100	Insert - Exhaust Valve Seat	2
13	59-0660	Hose - Oil	2	53	57-8020	Bearing - Flange Std.	1
14	322-4	Screw - Cap Hex. Hd.	3	*	57-9360	Bearing - Flange .002" undersize	1
15	59-0300	Bracket	1	*	57-8030	Bearing - Flange .010" undersize	1
16	59-1130	Nut	3	*	57-9800	Bearing - Flange .020" undersize	1
17	59-0840	Washer - Flat	2	*	59-0010	Bearing - Flange .030" undersize	1
18	59-0860	Washer - Flat	2	54	59-0290	Tube - Oil	1
19	3217-4	Nut - Hex.	2	55	82-1840	Ring Set - Piston Std.	2
20	57-8530	Filter - Oil	1	*	82-1850	Ring Set - Piston .010" oversize	2
21	57-8540	Base - Filter	1			(Incl. Ref. #48 & 50)	2
22	71-6240	Screw - Flange	5	*	82-1860	Ring Set - Piston .020" oversize	2
23	57-8170	Shim	A/R	*	82-1870	Ring Set - Piston .030" oversize	2
24	3247-4	Screw - Socket Hd. Set	2	56	71-6290	Kit - Gasket Comp. Engine	1
25	59-0050	Insert - Valve Seat Std.	2	57	57-8480	Pump - Oil	1
*	59-0080	Insert - Valve Seat .010" OS	2	58	3253-3	Washer - Lock	2
26	71-5770	Valve - Intake	2	59	321-6	Screw - Cap Hex. Hd.	2
27	57-8830	Gasket	2	60	59-0750	Pin - Alignment	2
28	71-5820	Head - Cylinder R.H.	1	61	57-8460	Kit - Gasket, Oil Pump	1
29	57-9770	Washer - Flat	18	62	57-8000	Bearing - Camshaft	2
30	71-6270	Screw - Cap Hex. Hd.	18	63	82-1880	Block - Short	1
31	57-9490	Switch - Low Oil Pressure	1	64	57-8470	Plunger - Bypass Valve	1
32	57-8510	Adapter - Oil Filter	1	65	57-8500	Spring - Bypass Valve	2
33	57-9750	Washer - Flat	2	66	59-0910	Screw - Cap Hex. Hd.	1
34	3274-18	Screw - Cap Soc. Hd.	2	67	57-9760	Washer - Flat	1
35	3256-1	Washer - Flat	1	68	71-5790	Spring - Valve	4
36	57-9220	Hose - Oil	2	69	71-5830	Cap - Valve	4
37	59-0670	Elbow - Male (from Filter)	1	70	71-5840	Lock - Valve Spring	8
38	59-0680	Elbow - Male (to Filter)	1	71	57-8450	Tappet - Valve Std.	4
39	3211-27	Screw - Cap Hex. Hd.	1	*	59-0260	Tappet - Valve .002" OS	4
40	57-9760	Washer - Flat	1	*	59-0270	Tappet - Valve .005" OS	4
41	72-3960	Switch - Temp. Cut-Off	1	72	57-9740	Washer - Flat	2
42	57-8470	Valve - By-pass Plunger	1	73	71-5800	Washer - Valve Spring Ret.	4
43	82-0520	Gasket	1	*	71-6300	Kit - Valve Grinding	1
44	59-0640	Elbow - Street 45°	1				
45	82-1800	Piston - Std. (Incl. Ref. #46 & 47)	2				

\*Not Illustrated

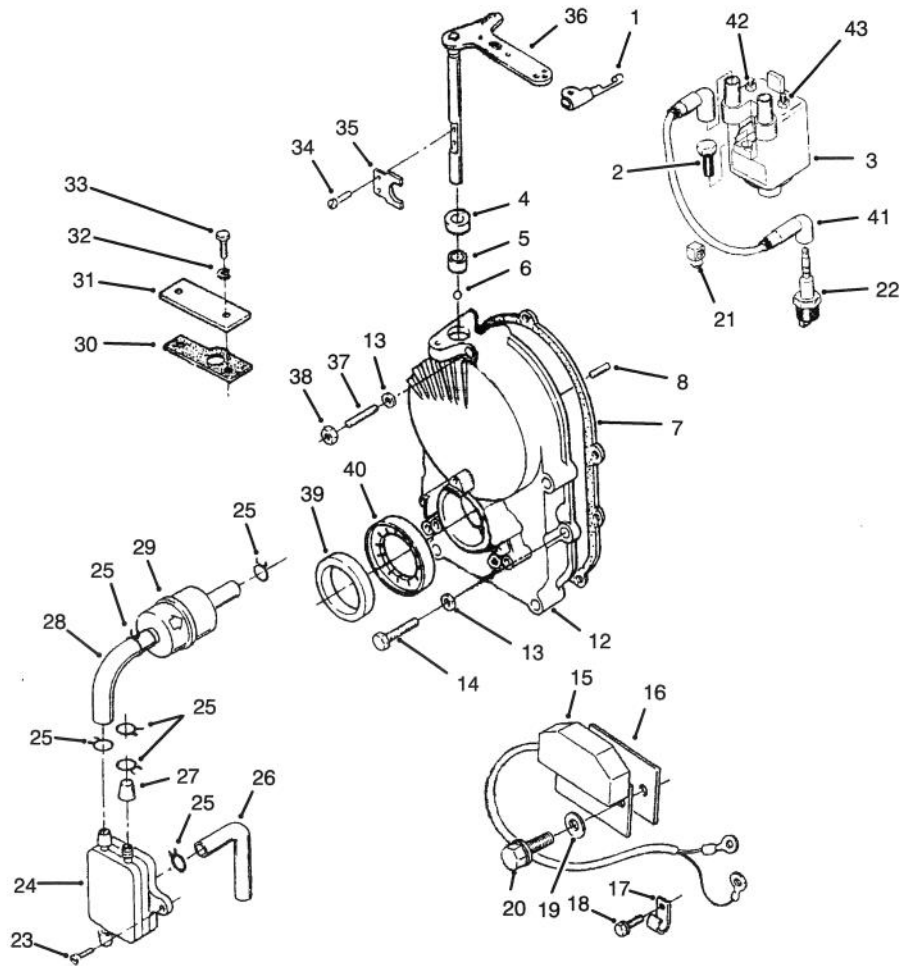


T-1261

### OIL BASE & FUEL PUMP – ONAN P220G TYPE I/10808D

Ref. No.	Part No.	Description	No. Used
1	71-6170	Seal	1
2	82-1790	Oil Fill Tube & Bracket Assy.	1
3	57-9610	O-Ring	1
4	71-5880	Cap (Incl. Ref. #3)	1
8	57-8490	Cup – Intake	1
9	57-8090	Gasket	1

Ref. No.	Part No.	Description	No. Used
10	281-2	Plug	2
11	3253-5	Washer – Lock	4
12	323-42	Screw – Cap Hex. Hd.	4
13	57-8080	Plug	1
14	57-8070	Gasket	1
15	71-5730	Base (Incl. Ref. #9, 10, 13 & 14)	1

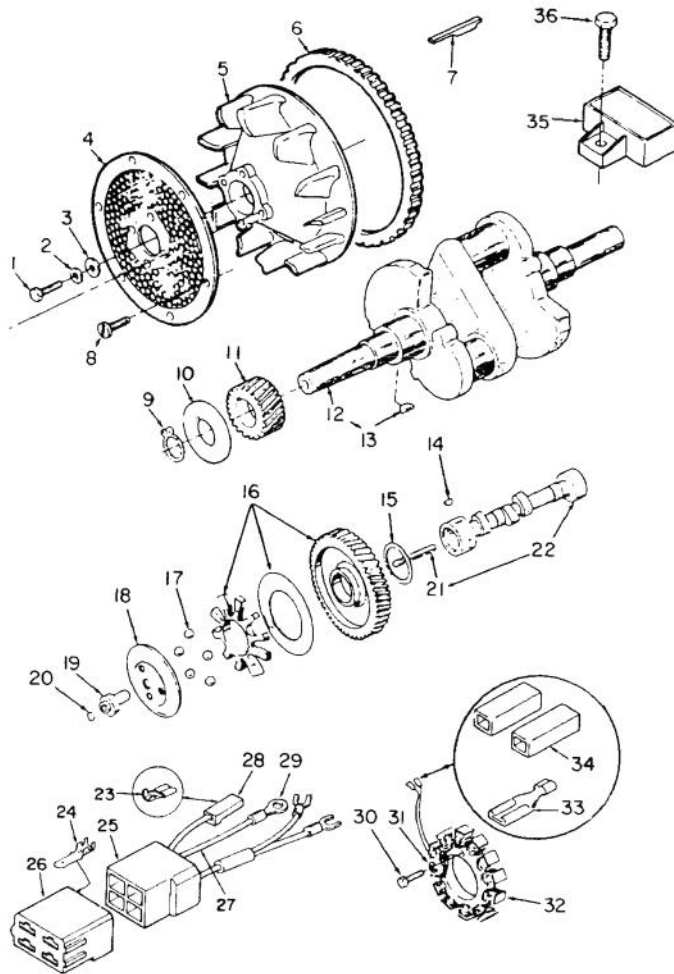


T-0754

## IGNITION CONTROL – ONAN P220G TYPE I/10808D

Ref. No.	Part No.	Description	No. Used	Ref. No.	Part No.	Description	No. Used
1	57-9730	Clip – Retaining	1	24	57-9080	Pump – Fuel	1
2	71-6460	Screw – Flange Hex. Hd.	2	25	57-9550	Clamp	7
3	71-6000	Coil	1	26	71-6100	Line – Pulse	1
4	57-9570	Seal – Oil	1	27	59-0370	Cap – Fuel Fitting	1
5	57-9650	Bearing	1	28	59-0710	Hose	1
6	57-9630	Ball – Bearing	1	29	71-5960	Filter – Fuel	1
7	71-6360	Gasket	1	30	57-9260	Gasket – Plate	1
8	59-0740	Pin – Dowel	1	31	71-5990	Plate – Ign. Plunger Cover	1
12	71-6350	Kit – Gearcase (Incl. Ref. #4-6, 8-11, 26, & 34-36)	1	32	3256-1	Washer – Flat	2
13	57-9750	Washer – Flat	5	33	321-3	Screw – Cap Hex. Hd.	2
14	322-9	Screw – Cap Hex. Hd.	4	34	3250-16	Screw – Mach. Pan Hd.	2
15	71-6380	Control – Ignition	1	35	59-0420	Yoke	1
16	71-6410	Insulator	1	36	59-0440	Shaft	1
17	71-6220	Clip – Wire	2	37	59-0790	Stud	1
18	71-6450	Screw – Flange Hex. Hd.	1	38	3217-6	Nut – Hex.	1
19	3254-1	Washer – Lock	2	39	57-9580	Seal – Oil	1
20	71-6400	Screw – Flange Hex. Hd.	2	40	71-6010	Rotor – Ignition	1
21	71-6060	Clip	1	41	71-6420	Cable – Plug 9" Long	1
22	57-9340	Plug – Spark	2	42	71-6440	Nut – Flange	1
23	59-1050	Screw – Self Tap. Pan Hd.	2	43	71-6430	Nut – Flange	1
				*	71-6020	Cable – Plug 18.5" Long	1

\*Not Illustrated



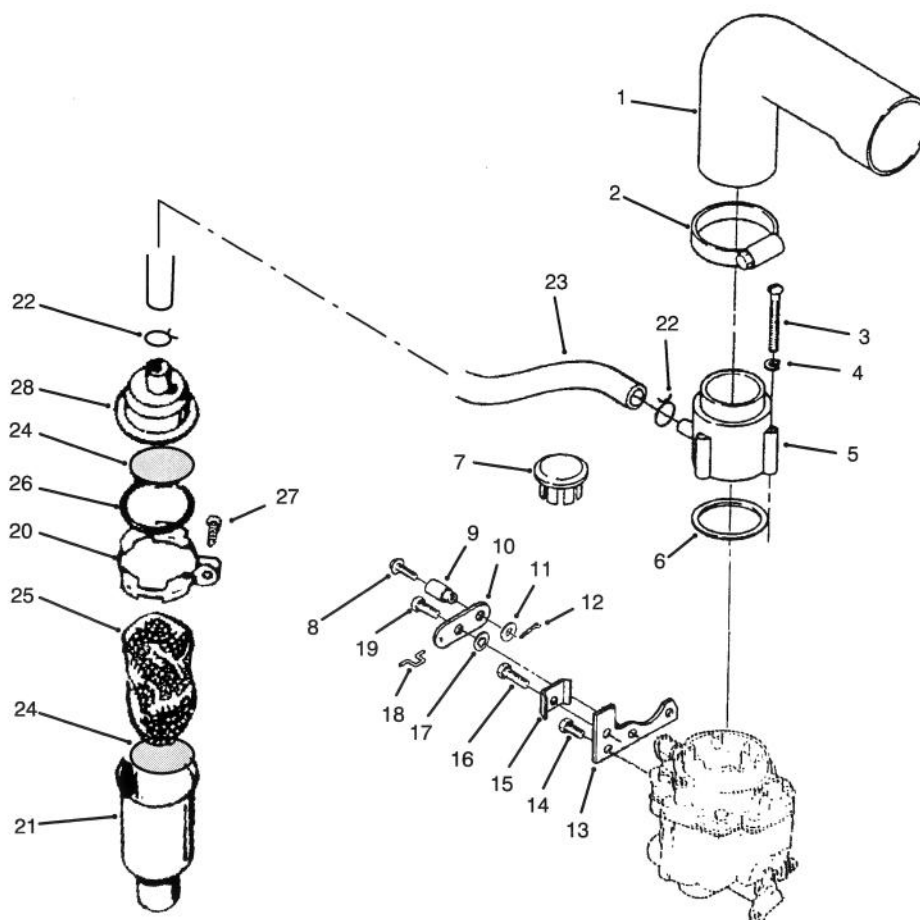
T-0756

## BLOWER & CRANKSHAFT – ONAN P220G TYPE I/10808D

Ref. No.	Part No.	Description	No. Used
1	57-8150	Screw – Cap Hex. Hd. Spec.	1
2	3253-6	Washer – Lock	1
3	59-0810	Washer	1
4	71-5900	Screw – Air Inlet	1
5	71-5920	Flywheel (Incl. Ref. #6)	1
6	57-8180	Gear – Ring	1
7	71-6190	Key – Flywheel	1
8	71-6340	Screw – Flange	6
9	57-9710	Ring – Retaining	1
10	57-8140	Washer – Special	1
11	57-8130	Gear – Crankshaft	1
12	71-5750	Crankshaft (Incl. Ref. #13)	1
13	57-9660	Key – Gear	1
14	57-9660	Key – Woodruff	1
15	57-8230	Washer	1
16	57-8210	Gear	1
17	57-9640	Ball – Governor	5
18	59-0450	Cup – Governor	1
19	57-9130	Hub – Cup, Governor	1

Ref. No.	Part No.	Description	No. Used
20	57-9090	Ring – Retaining	1
21	59-0400	Pin	1
22	71-6320	Camshaft (Incl. Ref. #21)	1
23	72-4000	Terminal – Receptacle	5
24	72-4040	Terminal – Tab	4
25	72-4010	Housing – Receptacle	1
26	72-4020	Housing – Tab	1
27	71-6070	Harness – Wiring	1
28	72-4030	Housing	1
29	72-3990	Terminal – Ring	1
30	71-6390	Screw – Mach. Hex. Hd.	3
31	3253-2	Washer – Lock	3
32	57-9440	Stator	1
33	59-0590	Terminal	3
34	71-6370	Body – Terminal	2
35	71-6030	Regulator	1
36	59-1080	Screw – Cap Hex. Hd.	1
*	71-6230	Kit – Connector, Harness (Incl. Ref. #24 & 26)	1

\*Not Illustrated

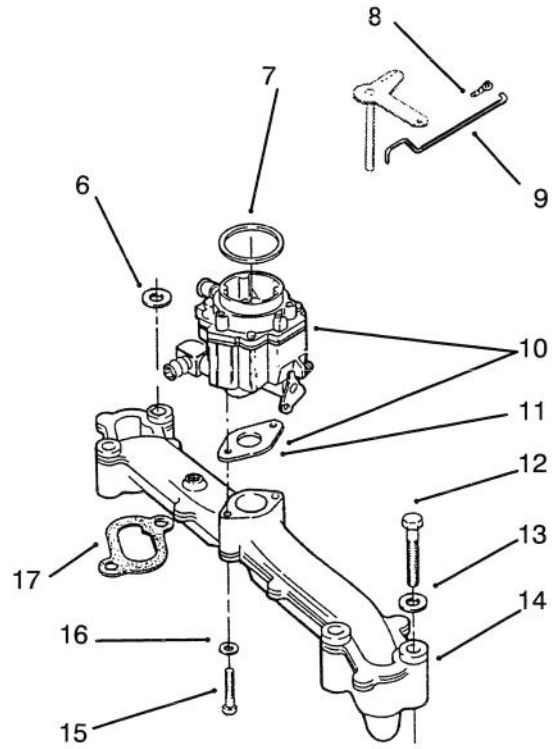
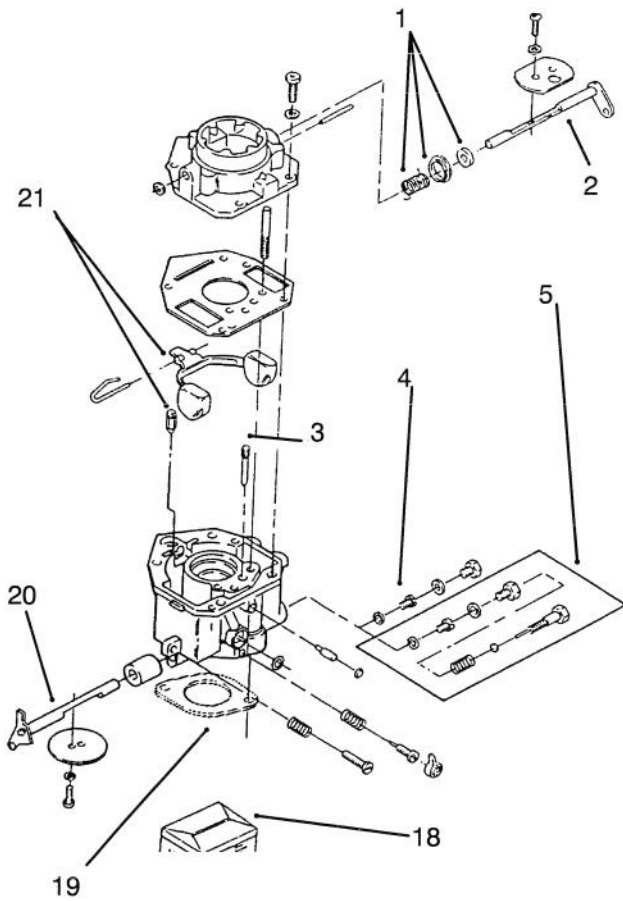


T-0770

## AIR CLEANER & CHOKE – ONAN P220G TYPE I/10808D

Ref. No.	Part No.	Description	No. Used
1	57-8800	Elbow – Air Inlet	1
2	59-0690	Clamp	2
3	59-0940	Screw – Mach. Rd. Hd.	3
4	3253-2	Washer – Lock	3
5	57-8720	Adapter – Carburetor	1
6	57-9620	Seal	1
7	71-6210	Plug – Button	1
8	72-3890	Screw – Mach. Hex. Hd.	1
9	57-9170	Swivel	1
10	59-0460	Lever – Choke	1
11	59-0580	Washer – Flat	2
12	59-0720	Pin – Cotter	1
13	59-0470	Bracket	1
14	72-3880	Screw – Flange Hex. Hd.	1

Ref. No.	Part No.	Description	No. Used
15	57-9190	Clip	1
16	72-3900	Screw – Self Tap. Slot. Hd.	1
17	3254-1	Washer – Lock	1
18	57-9180	Link – Choke	1
19	59-1020	Screw – Shoulder	1
20	82-0530	Clamp	1
21	82-0540	Tube – Breather	1
22	57-9540	Clamp	1
23	71-6130	Hose – Breather	1
24	82-0560	Screen – Breather Tube	2
25	57-8580	Baffle – Breather Tube	1
26	82-0570	Seal – O-Ring	1
27	82-1480	Screw – Self Tapping	1
28	82-0550	Breather Cap & Valve	1

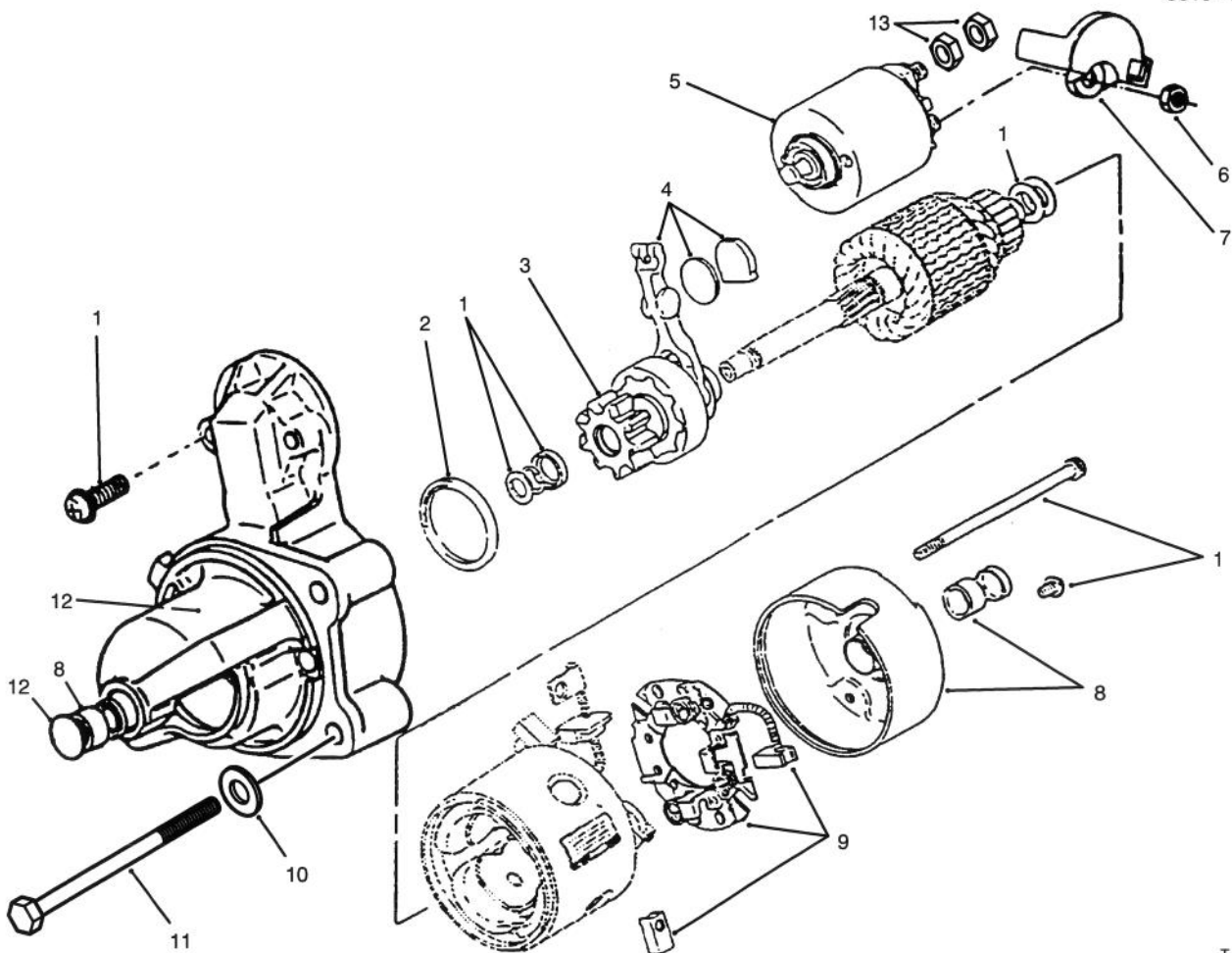


T-0771

## CARBURETOR – ONAN P220G TYPE I/10808D

Ref. No.	Part No.	Description	No. Used
1	72-3870	Kit – Choke Lever	1
2	72-3860	Shaft – Choke	1
3	62-2820	Jet – Idle	1
4	57-9050	Jet – Power	1
5	57-8950	Kit – Variable Jet	1
6	3256-23	Washer – Flat	1
7	57-9620	O-Ring	1
8	57-9700	Clip	1
9	57-9160	Rod – Governor Control	1
10	62-2790	Carburetor – Complete	1
11	57-9200	Gasket	1

Ref. No.	Part No.	Description	No. Used
12	322-10	Screw – Cap Hex. Hd.	4
13	3256-23	Washer – Flat	4
14	71-6480	Manifold – Intake	1
15	322-9	Screw – Cap Hex. Hd.	2
16	3256-1	Washer – Flat	2
17	71-5980	Gasket	2
18	62-2810	Kit – Float Repair	1
19	57-9200	Gasket	1
20	57-8920	Shaft – Throttle	1
21	62-2800	Kit – Float	1



T-1271

## STARTER – ONAN P220G TYPE I/10808D

Ref. No.	Part No.	Description	No. Used	Ref. No.	Part No.	Description	No. Used
1	62-2760	Starter Hardware Kit	1	9	62-2740	Starter Brush Kit	1
2	72-3950	Dust Seal Kit	1	10	57-9770	Washer – Mounting Screw	2
3	72-3940	Starter Clutch Kit	1	11	322-22	Screw – Cap Hex. Hd.	2
4	62-2770	Starter Shift Lever Kit	1	12	62-2750	Brush Mounting Kit	1
5	72-3930	Starter Solenoid Kit	1	13	57-6390	Nut – Jam	2
6	82-1730	Nut – Hex.	1	*	71-6040	Starter Assembly (Incl. Ref. #1-10 & 13)	1
7	82-1720	Cap Solenoid	1				
8	62-2730	Starter Bushing Kit	1				

\*Not Illustrated

# TORO PART NUMBER INDEX

Part No.	Description	Pg. Ref. No. No. Qty.	Part No.	Description	Pg. Ref. No. No. Qty.
3-0348	Bushing	11 10 8	25-2500	Shaft - Trunion	17 2 1
3-3251	Spring	2 12 1	25-2510	Washer	17 3 2
3-6514	Washer	13 7 2	25-2660	Union - Filter	17 38 1
3-6514	Washer - Thrust	11 2 2	25-3210	Lip Seal	17 7 2
3-6685	Spring	5 40 1	25-3300	Bearing - Needle	17 18 2
3-7243	Spring - Return	2 26 2	27-2360	Switch - Ignition	7 10 1
4-2390	Washer	1 15 2	27-3250	Nonskid - Tunnel	7 40 1
5-7570	Washer	4 8 2	27-3260	Nonskid - Floor	7 44 1
6-1659	Switch - Toggle	8 61 1	27-3270	Shroud - Fan	15 11 1
7-3900	Pad - Brake	2 35 2	27-3390	Tube - Front Steering	2 39 1
10-7160	Assembly - Wire	10 26 2	27-3550	Rod - Brake Latch	2 7 1
10-8110	Washer	11 9 4	27-3560	Latch - Parking Brake	2 32 1
12-5450	Screw - Thread Forming	22 16 8	27-3640	Pivot Mount Assembly	11 40 1
12-5869	Hood	1 1 1	27-3680	Spacer - Mounting	15 25 4
12-9990	Meter - Hour	7 37 1	27-3690	Gasket - Transmission	15 28 1
18-8000	Mount - Rubber	7 25 2	27-3710	Dipstick	22 1 1
19-1470	Screw - Shoulder	1 16 2	27-3740	Fan	15 29 1
20-4840	Clamp - Muffler	5 16 1	27-4060	Pin - Rear Axle	11 12 1
21-0141	Socket Assembly R.H.	4 13 1	27-4090	Rod - Tie	11 33 2
21-0141	Socket Assembly R.H.	11 37 3	27-4160	Tube - Pump Control	15 5 1
21-0141	Socket Assembly R.H.	2 40 2	27-4200	Lever - Valve	19 2 1
21-0151	Socket Assembly L.H.	11 35 3	27-4220	Link - Lever, Valve	19 11 1
21-1880	Grip - Handle	13 3 1	27-4230	Bracket - Valve	19 5 1
21-3370	Assembly - Brake Cable	2 23 2	27-4240	Pin - Cylinder	18 35 2
21-7670	Case - Differential	22 7 1	27-4310	Pin - Pivot	18 31 2
21-7690	Gear - Pinion	22 11 2	27-4340	Assembly - Hub & Plug	15 8 1
21-7700	Shaft - Pinion Mate	22 8 1	27-4360	Washer	15 30 1
21-7720	Washer - Thrust	22 9 2	27-4480	Hose - Pressure, Low	18 23 1
21-7730	Washer - Thrust	22 12 2	27-4520	U/Joint Shaft Assembly	14 37 1
21-7770	Screw - Drive Gear	22 6 5	27-4570	Handle - Adjustment	6 10 2
21-7830	Cover - Gear	22 17 1	27-4720	Shaft - Seat Pivot	5 7 1
21-7850	Plug - Cap	23 31 1	27-4800	Pin - Pivot R.H.	1 * 1
21-8020	Spacer - Bearing Frt. Pinion	22 26 1	27-4830	Pin - Pivot L.H.	1 10 1
21-8090	Shim - Diff. Adjust. .003	23 36 A/R	27-4910	Lever - Power Take-Off	13 2 1
21-8100	Shim - Diff. Adjust. .005	23 37 A/R	27-4980	Shaft - P.T.O.	14 17 1
21-8110	Shim - Diff. Adjust. .010	23 38 A/R	27-5090	Wire - Battery Ground	9 3 1
21-8120	Shim - Diff. Adjust. .030	23 39 A/R	27-5200	Spacer - Float	20 14 1
21-8180	Bearing - Tapered Roller	24 3 2	27-5210	Spool	20 11 1
21-8270	Pin - Dowel	22 5 2	27-5230	Arm - Pivot	11 39 1
21-8320	Gasket - Wheel Bearing	24 20 2	27-5240	Bolt - Shoulder	6 7 2
21-8330	Oil Seal	24 2 2	27-5310	Support - Axle	15 7 1
21-8360	Clip - Retaining	24 10 2	27-6600	Spacer - Rubber Coupling	15 16 4
21-9260	Cover - Dust	2 16 1	27-6650	Retainer - Bearing	14 31 1
21-9370	Adjusting Screw	24 7 2	27-6800	Link - Hood	1 8 2
21-9380	Nut - Pivot	24 8 2	27-6810	Tie - Hood	1 12 2
21-9390	Socket - Adjusting Screw	24 6 2	27-6850	Shaft - Axle R.H.	24 * 1
21-9420	Spring - Shoe Return L.H.	24 17 2	27-6860	Shaft - Axle L.H.	24 1 1
21-9430	Spring - Shoe Return R.H.	24 18 2	27-6880	Strut/Lever - Parking Brake	24 19 2
21-9440	Screw - Spring Adjusting	24 14 2	27-6970	Stud - Bearing	14 30 1
21-9450	Dust Shield	24 4 2	27-7100	Assembly - Air Cleaner	5 20 1
21-9460	Retainer - Parking Brake	24 15 4	27-7110	Assembly - Element	5 25 1
22-7320	Cooler - Oil	10 7 1	27-7120	Assembly - Nut & Gasket	5 26 1
22-8330	Plug	20 1 1	27-7130	Assembly - Clamp	5 28 1
22-8340	Spring	20 3 1	27-7140	Skirt - Baffle	5 27 1
22-8350	Ball	20 4 1	27-7150	Assembly - Cup	5 29 1
22-8360	Pin - Cam	20 6 1	27-7160	Decal - Instruction	5 19 1
22-8370	Seat - Check Valve	20 5 1	27-7170	Assembly - Mounting, Band	5 23 2
22-8380	Retainer - Spring	20 12 2	27-7180	Assembly - Cap	5 17 1
22-8410	Spring	20 13 1	27-7310	Decal - Refueling	5 10 1
22-8480	Snap Ring - Spool	20 15 1	27-7320	Decal - Traction Pedal	7 50 1
22-8490	Ring - Retaining	20 16 1	27-7900	Screw - Adjusting	13 20 1
22-8500	O-Ring	20 10 2	27-9870	Pin - Seat Switch	5 41 1
23-2270	Bushing - Rubber	15 6 1	28-0660	Screw - Cap Hex. Hd.	24 21 8
23-2300	Filter - Oil	18 12 1	28-0670	Oil Seal	24 13 2
24-4370	Hub - Pump	15 12 1	28-0680	Brake Drum	24 11 2
24-8790	Gear - Bevel Diff. Side	22 10 2	28-1120	Plug	20 8 1
24-8840	Ring - Wheel Bearing	24 22 2	28-1130	Plug	20 7 1
25-2380	Plate - Thrust	17 15 2	28-3300	Bearing - Roller	17 4 1
25-2430	Pin	17 46 2	28-3310	Bearing - Needle	17 5 2
25-2460	Hex Hd. Plug	17 23 2	28-3340	Gasket	17 49 1
25-2470	Shim Pack	17 25 A/R	28-3350	Pin	17 48 2
25-2480	Relief Valve Spring Charge	17 44 1	28-3380	Plate - Motor Valve	17 45 1

\*Not Illustrated

# TORO PART NUMBER INDEX (Cont.)

3315-331A

Part No.	Description	Pg. Ref. No. No. Qty.	Part No.	Description	Pg. Ref. No. No. Qty.
28-3400	O-Ring	17 24 2	43-6711	Shim - Adjusting .005	22 21 A/R
28-3420	Relief Valve Cone Charge	17 27 2	43-6712	Shim - Adjusting .010	22 22 A/R
28-3440	Threaded Plug	17 42 2	43-6713	Shim - Adjusting .030	22 23 A/R
28-3450	Washer - Flat	17 36 2	43-6750	Cup - Bearing	22 15 1
28-3470	Lip Seal	17 34 1	43-6760	Cone - Bearing	22 14 1
28-3480	Bearing - Needle	17 33 1	43-6800	Nut - Lock, Flange Hd.	24 12 8
28-3520	O-Ring	17 31 1	43-6850	Assembly - Lower Housing	22 4 1
28-3530	Screw - Cap Hex. Hd.	17 30 2	43-8480	Decal - Danger	12 6 1
28-3570	O-Ring	17 21 2	43-8480	Decal - Danger	5 8 1
28-3580	Ring - Backup	17 20 2	44-2230	Coupling - Rubber	15 15 2
28-3590	O-Ring	17 19 2	44-8680	Shield - Heat	13 11 1
28-3640	Shaft - Pump	17 12 1	44-8690	Shield - Heat	10 2 1
28-3650	Bearing - Ball	17 10 1	44-8710	Shroud - Engine	10 4 1
28-3660	Lip Seal	17 9 1	44-8720	Shaft - Drive	15 13 1
28-3670	Shaft - Trunion	17 8 1	44-8820	Spring - Compression	13 18 1
28-5130	Pad - Traction Pedal	4 2 1	44-8830	Grille - Rear Panel	1 3 1
28-5220	Wheel - Friction	4 6 1	44-8890	Retainer - Spring	13 17 2
28-5640	Washer - Special	14 36 A/R	44-8920	Cover - Battery	7 30 1
28-6180	Pin - Plastic	5 46 1	44-8950	Tube - Air Cleaner	5 18 1
28-8950	Spring - Extension	14 29 2	44-8990	V-Belt - Torque Team	14 15 1
28-9050	Hub - Bearing	14 19 1	44-9010	Bracket - Shield Support	10 5 1
29-4730	Washer	14 14 1	44-9020	Oil Hose Assembly	10 14 1
29-5600	Pivot Bracket Assembly	4 10 1	44-9030	Foam - Hood (Front)	1 23 1
29-5630	Pin - Pedal Pivot	4 4 1	44-9040	Foam - Hood (Rear)	1 2 1
29-5640	Shaft - Traction Pedal	4 5 1	44-9050	Hose - Air Cleaner Inlet	5 14 1
29-5670	Pedal - Traction	4 1 1	44-9090	Axle - Rear	11 7 1
29-6150	Spring - Leaf	16 22 1	44-9110	Tube - Steering	11 38 1
29-6163	Micro Switch	16 7 1	44-9120	Steering Plate Assembly	11 29 1
29-6170	Spring - Extended Leaf	16 5 1	44-9190	Trim - Hood	1 19 1
29-6930	Arm - Switch	13 9 1	44-9220	Guide - Belt (Lower)	14 1 1
29-6930	Arm - Switch	5 39 1	44-9230	Guide - Belt	14 6 2
29-9790	Pump - Lever	16 2 1	44-9250	Control - Throttle	7 11 1
33-0990	Ammeter	8 57 1	44-9300	Control - Choke	7 2 1
33-2020	Spacer	15 19 4	44-9310	Bracket - Brake	14 5 1
36-8020	Washer	6 11 2	44-9320	Base - Engine	7 26 1
37-7060	Bar - Frame Rail	13 24 2	44-9330	Support Pad Assembly	14 7 1
37-9590	Spring	5 44 1	44-9350	Arm - Engagement	14 24 1
37-9770	Support - Seat	5 32 1	44-9390	Mount - Engine Rubber	7 16 2
37-9920	Hose	12 3 1	44-9450	Adapter - Air Inlet	10 31 1
38-2670	Kit - Charge Pump	17 37 1	44-9460	Foam - Battery Cover	7 29 1
38-2680	Pin	17 32 1	46-2210	Shim - Front Pinion Bearing	22 29 A/R
38-3170	Pin - Seat Switch	5 34 1	46-2211	Shim - Front Pinion Bearing	22 * A/R
38-4020	Mounting - Seat	5 6 1	46-2212	Shim - Front Pinion Bearing	22 * A/R
38-4070	Trim - Hood	1 24 1	46-2213	Shim - Front Pinion Bearing	22 * A/R
38-4080	Trim - Hood	1 25 1	46-2214	Shim - Front Pinion Bearing	22 * A/R
39-8850	Spindle - L.H.	11 18 1	46-2215	Shim - Front Pinion Bearing	22 * A/R
39-8900	Spindle - R.H.	11 6 1	46-2216	Shim - Front Pinion Bearing	22 * A/R
39-9600	Clamp - Mounting	8 56 1	46-2220	Shim - Front Pinion Bearing	22 * A/R
40-2190	Torque Spider	24 5 2	46-2221	Shim - Front Pinion Bearing	22 * A/R
41-8800	Pedal - Brake, R.H.	2 30 1	46-2222	Shim - Front Pinion Bearing	22 * A/R
41-8810	Pedal - Brake L.H.	2 28 1	46-2223	Shim - Front Pinion Bearing	22 * A/R
41-8820	Steering Gear Assembly	2 4 1	46-2224	Shim - Front Pinion Bearing	23 29 A/R
41-8830	Clamp - Coupling	2 6 1	46-2225	Shim - Front Pinion Bearing	23 * A/R
41-8840	Shaft - Steering	2 11 1	46-2226	Shim - Front Pinion Bearing	23 * A/R
41-8880	Arm - Gear Box	2 3 1	46-2390	Muffler - Spark Arrester	10 * 1
41-8900	Cover - Steering Tower	7 5 1	46-2410	Shim - Front Pinion Bearing	23 * A/R
41-8910	Decal - Instruction	7 45 1	46-2411	Shim - Front Pinion Bearing	23 * A/R
42-2540	Pin - Brake	2 27 1	46-2412	Shim - Front Pinion Bearing	23 * A/R
42-2580	Bracket - Steering Post	7 43 1	46-2413	Shim - Front Pinion Bearing	23 * A/R
42-3220	Rack	2 38 1	46-2414	Shim - Front Pinion Bearing	23 * A/R
42-6080	Shim - Axle	7 17 A/R	46-2415	Shim - Front Pinion Bearing	23 * A/R
42-6080	Shim - Axle	12 19 A/R	46-2416	Shim - Front Pinion Bearing	23 * A/R
43-1700	Valve - Hydraulic	19 8 1	46-2420	Shim - Front Pinion Bearing	23 * A/R
43-2690	Assy. - Shoe & Lining	24 16 4	46-2421	Shim - Front Pinion Bearing	23 * A/R
43-5220	Ring - Retaining	21 11 1	46-2422	Shim - Front Pinion Bearing	23 * A/R
43-5230	Shaft w/Clevis	21 12 1	46-2423	Shim - Front Pinion Bearing	23 29 A/R
43-5320	Pulley - P.T.O.	14 16 1	46-2424	Shim - Front Pinion Bearing	23 * A/R
43-5340	Pulley - Engine	10 23 1	46-2425	Shim - Front Pinion Bearing	23 * A/R
43-5350	Tank - Fuel	12 2 1	46-2426	Shim - Front Pinion Bearing	23 * A/R
43-6510	Gear & Pinion Assembly	23 * 1	46-3320	Trim - Hood	1 21 1
43-6550	Ring - Retaining	23 30 1	46-3350	Panel - Instrument	8 62 1
43-6710	Shim - Adjusting .003	22 20 A/R	46-3460	Decal - By-Pass	8 60 1

\*Not Illustrated

# TORO PART NUMBER INDEX (Cont.)

Part No.	Description	Pg. Ref.		Qty.	Part No.	Description	Pg. Ref.		Qty.
		No.	No.				No.	No.	
46-7280	Plug - Pipe	17	40	1	57-9160	Rod - Governor Control	32	9	1
46-7310	Relief Valve Spring Imp.	17	26	1	57-9170	Swivel	31	9	1
46-7320	Plate - Pump Valve	17	17	1	57-9180	Link - Choke	31	18	1
46-8560	Screw - Hex. Flange Hd.	5	2	4	57-9190	Clamp - Cable	25	30	1
46-8560	Screw - Self Tap. Hex. Hd.	7	6	11	57-9190	Clip	31	15	1
46-8810	Stop - Leaf Spring	16	9	1	57-9200	Gasket	32	11	1
46-9110	Spring - Seat	6	13	2	57-9200	Gasket	32	19	1
46-9120	Mount - Seat	6	14	2	57-9210	Gasket	25	23	2
47-4760	Shim - P.T.O. Block	14	20	1	57-9220	Hose - Oil	27	36	2
47-4780	Arm - Engagement	13	10	1	57-9230	Outlet	25	24	1
48-1800	Kit - Cylinder Block	17	16	2	57-9240	Outlet	25	27	1
49-2040	Screw - Self Tapping	25	31	1	57-9260	Gasket - Plate	29	30	1
49-2040	Screw - Self Tapping	10	32	1	57-9340	Plug - Spark	29	22	2
49-7820	Variable Swashplate	17	13	1	57-9360	Bearing - Flange	27	*	1
49-7830	Assembly - Check Valve	17	22	2	57-9440	Stator	30	32	1
49-7850	Center Section	17	39	1	57-9490	Switch - Low Oil Pressure	27	31	1
49-7870	Housing	17	6	1	57-9540	Clamp	31	22	1
49-7910	Transmission	15	10	1	57-9550	Clamp	29	25	7
49-8200	Shaft - Motor	17	47	1	57-9570	Seal - Oil	29	4	1
51-3150	Shim	16	25	1	57-9580	Seal - Oil	29	39	1
52-8890	Bracket - Mounting	16	16	1	57-9590	Seal - Oil	27	12	1
52-9070	Plate - Pump	16	17	1	57-9610	O-Ring	28	3	1
53-4430	Decal - Oil	7	36	1	57-9620	O-Ring	32	7	1
55-3574	Cap - Fuel	12	7	1	57-9620	Seal	31	6	1
57-6390	Nut - Jam	33	13	2	57-9630	Ball - Bearing	29	6	1
57-8000	Bearing - Camshaft	27	62	2	57-9640	Ball - Governor	30	17	5
57-8010	Gasket	27	8	1	57-9650	Bearing	29	5	1
57-8020	Bearing - Flange Std.	27	53	1	57-9660	Key - Gear	30	13	1
57-8030	Bearing - Flange	27	*	1	57-9660	Key - Woodruff	30	14	1
57-8040	Plate - Bearing	27	11	1	57-9690	Plug - Welch	27	6	1
57-8050	Bearing - Std. Crankshaft	27	10	1	57-9700	Clip	32	8	1
57-8060	Bearing - Crankshaft .010	27	*	1	57-9710	Ring - Retaining	30	9	1
57-8070	Gasket	28	14	1	57-9720	Ring - Retaining	27	46	4
57-8080	Plug	28	13	1	57-9730	Clip - Retaining	29	1	1
57-8090	Gasket	28	9	1	57-9740	Washer - Flat	27	72	2
57-8130	Gear - Crankshaft	30	11	1	57-9750	Washer - Flat	29	13	5
57-8140	Washer - Special	30	10	1	57-9750	Washer - Flat	27	33	2
57-8150	Screw - Cap Hex. Hd. Spec.	30	1	1	57-9760	Washer - Flat	27	40	1
57-8160	Washer - Thrust	27	9	2	57-9760	Washer - Flat	27	67	1
57-8170	Shim	27	23	A/R	57-9770	Washer - Flat	27	29	18
57-8180	Gear - Ring	30	6	1	57-9770	Washer - Mounting Screw	33	10	2
57-8210	Gear	30	16	1	57-9790	Nut - Lock Hex. Crown	27	50	4
57-8230	Washer	30	15	1	57-9800	Bearing - Flange	27	*	1
57-8280	Gasket - Valve Cover	27	3	2	59-0010	Bearing - Flange	27	*	1
57-8410	Bolt - Special	27	48	4	59-0020	Bearing - Crankshaft .002	27	*	1
57-8420	Rod - Connecting Std.	27	49	2	59-0030	Bearing - Crankshaft .020	27	*	1
57-8430	Rod - Conn. .010 undersize	27	*	2	59-0040	Bearing - Crankshaft .030	27	*	1
57-8440	Rod - Conn. .020 undersize	27	*	2	59-0050	Insert - Valve Seat Std.	27	25	2
57-8450	Tappet - Valve Std.	27	71	4	59-0080	Insert - Valve Seat .010 OS	27	*	2
57-8460	Kit - Gasket, Oil Pump	27	61	1	59-0100	Insert - Exhaust Valve Seat	27	52	2
57-8470	Plunger - Bypass Valve	27	64	1	59-0250	Rod - Conn. .030 undersize	27	*	2
57-8470	Valve - By-pass Plunger	27	42	1	59-0260	Tappet - Valve .002 OS	27	*	4
57-8480	Pump - Oil	27	57	1	59-0270	Tappet - Valve .005 OS	27	*	4
57-8490	Cup - Intake	28	8	1	59-0290	Tube - Oil	27	54	1
57-8500	Spring - Bypass Valve	27	65	2	59-0300	Bracket	27	15	1
57-8510	Adapter - Oil Filter	27	32	1	59-0370	Cap - Fuel Fitting	29	27	1
57-8530	Filter - Oil	27	20	1	59-0400	Pin	30	21	1
57-8540	Base - Filter	27	21	1	59-0420	Yoke	29	35	1
57-8580	Baffle - Breather Tube	31	25	1	59-0430	Spring - Idle Setting	25	6	1
57-8720	Adapter - Carburetor	31	5	1	59-0440	Shaft	29	36	1
57-8800	Elbow - Air Inlet	31	1	1	59-0450	Cup - Governor	30	18	1
57-8830	Gasket	27	27	2	59-0460	Lever - Choke	31	10	1
57-8920	Shaft - Throttle	32	20	1	59-0470	Bracket	31	13	1
57-8950	Kit - Variable Jet	32	5	1	59-0580	Washer - Flat	31	11	2
57-9050	Jet - Power	32	4	1	59-0590	Terminal	30	33	3
57-9080	Pump - Fuel	29	24	1	59-0630	Bracket - Lift	25	12	2
57-9090	Ring - Retaining	30	20	1	59-0640	Elbow - Street 45°	27	44	1
57-9100	Spring	25	4	1	59-0660	Hose - Oil	27	13	2
57-9120	Bushing	25	8	1	59-0670	Elbow - Male (from Filter)	27	37	1
57-9130	Hub - Cup, Governor	30	19	1	59-0680	Elbow - Male (to Filter)	27	38	1
57-9140	Arm - Governor Control	25	7	1	59-0690	Clamp	31	2	2
57-9150	Bracket - Cable	25	16	1	59-0710	Hose	29	28	1

\*Not Illustrated

# TORO PART NUMBER INDEX (Cont.)

3315-331A

Part No.	Description	Pg. Ref.		Qty.	Part No.	Description	Pg. Ref.		Qty.
		No.	No.				No.	No.	
59-0710	Hose - Fuel	10	19	1	71-5910	Housing - L.H.	25	28	1
59-0720	Pin - Cotter	31	12	1	71-5920	Flywheel	30	5	1
59-0730	Pin - Drive	27	7	4	71-5930	Housing - Blower	25	21	1
59-0740	Pin - Dowel	29	8	1	71-5940	Housing - R.H.	25	13	1
59-0750	Pin - Alignment	27	60	2	71-5960	Filter - Fuel	10	28	1
59-0790	Stud	29	37	1	71-5960	Filter - Fuel	29	29	1
59-0810	Washer	30	3	1	71-5970	Bracket	25	33	1
59-0840	Washer - Flat	27	17	2	71-5980	Gasket	32	17	2
59-0860	Washer - Flat	27	18	2	71-5990	Plate - Ign. Plunger Cover	29	31	1
59-0910	Screw - Cap Hex. Hd.	27	66	1	71-6000	Coil	29	3	1
59-0940	Screw - Mach. Rd. Hd.	31	3	3	71-6010	Rotor - Ignition	29	40	1
59-0970	Screw - Self Tap. Hex. Hd.	25	22	1	71-6020	Cable - Plug 18.5 Long	29	*	1
59-0980	Screw - Self Tap. Hex. Hd.	25	29	2	71-6030	Regulator	30	35	1
59-0980	Screw - Self Tap. Hex. Hd.	25	20	4	71-6040	Starter Assembly	33	*	1
59-1010	Screw - Hex. Flange Hd.	25	10	2	71-6060	Clip	29	21	1
59-1020	Screw - Shoulder	31	19	1	71-6070	Harness - Wiring	9	*	1
59-1030	Screw - Self Tap. Hex. Hd.	25	5	1	71-6070	Harness - Wiring	30	27	1
59-1050	Screw - Self Tap. Pan Hd.	29	23	2	71-6100	Line - Pulse	29	26	1
59-1080	Screw - Cap Hex. Hd.	30	36	1	71-6130	Hose - Breather	31	23	1
59-1080	Screw - Hex. Flange Hd.	25	14	4	71-6140	Grommet	25	32	1
59-1090	Screw - Hex. Washer Hd.	25	2	2	71-6150	Grommet - Air Seal	25	15	1
59-1130	Nut	27	16	3	71-6170	Seal	28	1	1
61-8140	Cover - Seat Support	5	1	1	71-6180	Seal - Intake Valve	27	4	2
61-9650	Hose - Fuel	12	11	1	71-6190	Key - Flywheel	30	7	1
62-2730	Starter Bushing Kit	33	8	1	71-6210	Plug - Button	31	7	1
62-2740	Starter Brush Kit	33	9	1	71-6220	Clip - Wire	29	17	2
62-2750	Brush Mounting Kit	33	12	1	71-6220	Clip - Wire	25	19	1
62-2760	Starter Hardware Kit	33	1	1	71-6230	Kit - Connector, Harness	30	*	1
62-2770	Starter Shift Lever Kit	33	4	1	71-6240	Screw - Flange	27	22	5
62-2790	Carburetor - Complete	32	10	1	71-6250	Guide - Exhaust Valve	27	5	2
62-2800	Kit - Float	32	21	1	71-6260	Guide - Intake Valve	27	5	2
62-2810	Kit - Float Repair	32	18	1	71-6270	Screw - Cap Hex. Hd.	27	30	18
62-2820	Jet - Idle	32	3	1	71-6290	Kit - Gasket Comp. Engine	27	56	1
62-5550	Decal - Toro	7	4	1	71-6300	Kit - Valve Grinding	27	*	1
62-7400	Decal - Toro	15	18	1	71-6310	Pin - Piston	27	47	4
63-7400	Washer	7	15	4	71-6320	Camshaft	30	22	1
63-7590	Relay	13	27	1	71-6340	Screw - Flange	30	8	6
63-8360	Key	7	8	1	71-6350	Kit - Gearcase	29	12	1
66-3110	Fitting	18	11	2	71-6360	Gasket	29	7	1
66-5400	Assembly - Seat	6	4	1	71-6370	Body - Terminal	30	34	2
66-8130	Hose	18	19	1	71-6380	Control - Ignition	29	15	1
66-8190	Hose	18	8	1	71-6390	Screw - Mach. Hex. Hd.	30	30	3
67-1710	Decal - Caution	5	4	1	71-6400	Screw - Flange Hex. Hd.	29	20	2
68-7320	Decal - Hydraulic Lift	5	3	1	71-6410	Insulator	29	16	1
68-7330	Decal - Caution	5	9	1	71-6420	Cable - Plug 9 Long	29	41	1
68-7350	Decal - Instrument Panel	7	9	1	71-6430	Nut - Flange	29	43	1
68-9700	Assembly - Hyd. Cylinder	18	18	2	71-6440	Nut - Flange	29	42	1
70-2590	Engine - Onan (Model No.	10	18	1	71-6450	Screw - Flange Hex. Hd.	29	18	1
70-2770	Head	21	9	1	71-6460	Screw - Flange Hex. Hd.	29	2	2
70-2780	Piston	21	4	1	71-6480	Manifold - Intake	32	14	1
70-2790	Kit - Seal Repair	21	*	1	72-3860	Shaft - Choke	32	2	1
71-0590	Assembly - Fitting	18	5	1	72-3870	Kit - Choke Lever	32	1	1
71-0670	Hose - Trans. to Valve	18	6	1	72-3880	Screw - Flange Hex. Hd.	31	14	1
71-0680	Hose	18	16	1	72-3890	Screw - Mach. Hex. Hd.	31	8	1
71-0690	Hose - Cyl. Tee to Valve	18	27	1	72-3900	Screw - Self Tap. Hex. Hd.	25	17	1
71-0700	Spacer	10	24	1	72-3900	Screw - Self Tap. Slot. Hd.	31	16	1
71-3270	90° Elbow	18	14	2	72-3930	Starter Solenoid Kit	33	5	1
71-3370	Hose - Fuel	12	21	1	72-3940	Starter Clutch Kit	33	3	1
71-3370	Line - Fuel	10	29	1	72-3950	Dust Seal Kit	33	2	1
71-3770	Hose - Pressure, Low	18	24	1	72-3960	Switch - Temp. Cut-Off	27	41	1
71-5730	Base	28	15	1	72-3970	Cover - Exhaust Tube L.H.	25	1	1
71-5750	Crankshaft	30	12	1	72-3980	Cover - Exhaust Tube R.H.	25	3	1
71-5770	Valve - Intake	27	26	2	72-3990	Terminal - Ring	9	*	1
71-5780	Valve - Exhaust	27	51	2	72-3990	Terminal - Ring	30	29	1
71-5790	Spring - Valve	27	68	4	72-4000	Terminal - Receptacle	9	*	5
71-5800	Washer - Valve Spring Ret.	27	73	4	72-4000	Terminal - Receptacle	30	23	5
71-5820	Head - Cylinder R.H.	27	28	1	72-4010	Housing - Receptacle	9	5	1
71-5830	Cap - Valve	27	69	4	72-4010	Housing - Receptacle	30	25	1
71-5840	Lock - Valve Spring	27	70	8	72-4020	Housing - Tab	9	4	1
71-5850	Cover - Valve	27	2	2	72-4030	Housing	9	*	1
71-5880	Cap	28	4	1	72-4030	Housing	30	28	1
71-5900	Screw - Air Inlet	30	4	1	72-4040	Terminal - Tab	9	*	4

\*Not Illustrated

# TORO PART NUMBER INDEX (Cont.)

Part No.	Description	Pg. Ref.		Part No.	Description	Pg. Ref.	
		No.	Qty.			No.	Qty.
72-4040	Terminal - Tab	30	24	4	2412-123	R-Clamp	6 3 2
72-7920	Muffler	10	15	1	2412-142	Clamp - R	10 30 1
72-7930	Extension	10	9	1	251-77	Collar - Locking	14 28 2
72-9420	Vent Tube Assembly	23	41	1	251-253	Bearing w/Collar	14 26 2
74-0720	Tube - Manual	6	2	1	251-255	Bearing - Flange	14 25 4
75-0810	Decal	8	65	2	251-259	Bearing - Ball	16 23 1
76-1420	Wheel - Steering	2	18	1	251-268	Bearing	14 21 2
76-3080	Arm - Lift, R.H.	18	29	1	251-269	Bearing - Pillow Block	13 5 2
76-3090	Arm - Lift, L.H.	18	28	1	251-275	Bearing - Ball	2 {15 1
80-3330	Gasket	5	47	1	252-6	Bearing	11 3 2
82-0520	Gasket	27	43	1	253-129	Seal - Oil	11 19 2
82-0530	Clamp	31	20	1	254-65	Cone - Bearing Tapered	23 34 2
82-0540	Tube - Breather	31	21	1	254-66	Cup - Bearing Tapered	23 33 2
82-0550	Breather Cap & Valve	31	28	1	254-72	Cup - Bearing	11 22 4
82-0560	Screen - Breather Tube	31	24	2	254-90	Cup - Bearing	22 27 1
82-0570	Seal - O-Ring	31	26	1	254-91	Cone - Bearing	22 28 1
82-1480	Screw - Self Tapping	31	27	1	254-94	Cone - Bearing	11 27 4
82-1720	Cap Solenoid	33	7	1	256-42	Bushing	2 29 4
82-1730	Nut - Hex.	33	6	1	256-101	Bushing	18 38 4
82-1790	Oil Fill Tube & Bracket Assy.	28	2	1	256-121	Bushing	11 17 2
82-1800	Piston - Std.	27	45	2	256-156	Bushing - Flange	4 9 2
82-1810	Piston - .010 OS	27	45	2	256-173	Bushing	5 5 2
82-1820	Piston - .020 OS	27	*	2	281-1	Yoke	13 22 1
82-1830	Piston - .030 OS	27	*	2	281-2	Plug	28 10 2
82-1840	Ring Set - Piston Std.	27	55	2	283-17	Pin - Clevis	19 12 1
82-1850	Ring Set - Piston	27	*	2	283-42	Pin - Clevis	13 23 1
82-1860	Ring Set - Piston	27	*	2	283-58	Pin - Clevis	2 24 2
82-1870	Ring Set - Piston	27	*	2	285-17	Plug - Pipe	17 28 4
82-1880	Block - Short	27	63	1	289-38	Nipple - Pipe	23 43 1
82-8530	Fitting - Straight	18	10	2	2811-9	Street Elbow 90°	23 42 1
84-8600	Set - Brake Shoe (4 Shoes)	24	*	1	302-5	Fitting - Grease	13 4 2
86-7220	Gear - Spur	15	26	1	302-5	Fitting - Grease	11 11 4
86-7230	Gear - Spur	22	18	1	302-5	Fitting - Grease	2 31 2
86-7290	Frame Assembly	7	47	1	302-5	Fitting - Grease	14 38 1
86-7470	Diode	9	2	1	302-40	Fitting - Grease	14 18 2
86-7930	Upper Housing Assembly	22	24	1	302-62	Fitting - Grease	18 37 2
86-9470	Harness - Wire	9	1	1	304-99	90° Barb Hose Stem	18 17 1
86-9660	Axle Assembly	12	16	1	321-3	Screw - Cap Hex. Hd.	14 33 2
92-1584	Decal - ProLine 220	1	6	2	321-3	Screw - Cap Hex. Hd.	29 33 2
217-107	Rim	12	13	2	321-4	Screw - Cap Hex. Hd.	16 21 2
217-108	Rim	11	21	2	321-6	Screw - Cap Hex. Hd.	27 59 2
218-473	Boot - Toggle Switch	8	59	1	321-9	Screw - Cap Hex. Hd.	16 3 2
218-515	Bracket - Mounting	7	38	1	321-10	Screw - Cap Hex. Hd.	27 1 2
2112-9	Clamp	10	8	1	321-10	Screw - Cap Hex. Hd.	19 13 1
231-103	Tire	12	12	2	321-24	Screw - Cap Hex. Hd.	19 7 3
231-104	Tire	11	20	2	322-3	Screw - Cap Hex. Hd.	7 21 4
232-35	Valve Stem w/Cap	12	15	2	322-3	Screw - Cap Hex. Hd.	5 24 4
232-35	Valve Stem w/Cap	11	28	2	322-3	Screw - Cap Hex. Hd.	25 26 4
232-39	Tube - Inner (Optional)	11	*	2	322-4	Screw - Cap Hex. Hd.	14 8 2
232-43	Tube - Inner (Optional)	12	*	2	322-4	Screw - Cap Hex. Hd.	27 14 3
233-17	Knob	2	14	1	322-5	Screw - Cap Hex. Hd.	6 5 8
233-35	Knob	7	3	2	322-5	Screw - Cap Hex. Hd.	15 31 1
233-39	Knob	19	1	1	322-9	Screw - Cap Hex. Hd.	29 14 4
237-22	O-Ring	18	9	4	322-9	Screw - Cap Hex. Hd.	32 15 2
237-42	O-Ring	20	2	1	322-10	Screw - Cap Hex. Hd.	32 12 4
237-42	O-Ring	18	3	6	322-17	Screw - Cap Hex. Hd.	16 18 1
237-78	O-Ring	18	13	3	322-22	Screw - Cap Hex. Hd.	33 11 2
237-80	O-Ring	18	22	1	323-5	Screw - Cap Hex. Hd.	11 5 2
237-81	Seal - O-Ring	23	44	1	323-8	Screw - Cap Hex. Hd.	17 29 2
237-150	O-Ring	18	15	4	323-10	Screw - Cap Hex. Hd.	17 43 4
241-119	Cap - Dust	11	24	2	323-12	Screw - Cap Hex. Hd.	7 19 4
242-34	Stud - Axle Flange	24	9	10	323-18	Screw - Cap Hex. Hd.	14 12 1
242-35	Nut - Hex.	12	14	10	323-38	Screw - Cap Hex. Hd.	15 23 2
249-39	Assembly - Handle	5	12	2	323-39	Screw - Cap Hex. Hd.	16 14 2
249-40	Keeper - Reverse	1	20	2	323-42	Screw - Cap Hex. Hd.	28 12 4
2412-36	Clamp - Hose	10	20	5	324-6	Screw - Cap Hex. Hd.	7 41 3
2412-36	Clamp - Worm Drive	12	5	5	324-9	Screw - Cap Hex. Hd.	12 20 4
2412-36	Clamp - Worm Drive	18	20	4	324-23	Screw - Cap Hex. Hd.	22 19 4
2412-37	Clamp - Muffler	10	16	2	324-23	Screw - Cap Hex. Hd.	17 35 2
2412-39	Clamp - R	10	10	2	3210-5	Screw - Cap Hex. Hd.	15 17 4
2412-42	Clamp - Hose	5	13	2	3210-7	Screw - Cap Hex. Hd.	16 4 1
2412-42	Clamp - Hose	10	33	1	3210-7	Screw - Cap Hex. Hd.	22 25 8

\*Not Illustrated

# TORO PART NUMBER INDEX (Cont.)

3315-331A

Part No.	Description	Pg. Ref. No. No. Qty.	Part No.	Description	Pg. Ref. No. No. Qty.
3210-8	Screw - Cap Hex. Hd.	15 22 4	3253-6	Washer - Lock	7 42 3
3211-27	Screw - Cap Hex. Hd.	1 11 2	3253-7	Washer - Lock	4 11 2
3211-27	Screw - Cap Hex. Hd.	27 39 1	3253-21	Washer - Lock	15 2 3
3217-4	Nut - Hex.	27 19 2	3253-21	Washer - Lock	14 13 1
3217-6	Nut	6 9 4	3253-21	Washer - Lock	16 13 2
3217-6	Nut - Hex.	14 9 4	3253-21	Washer - Lock	7 46 1
3217-6	Nut - Hex.	5 15 2	3253-28	Washer - Lock	2 2 1
3217-6	Nut - Hex.	29 38 1	3254-1	Washer - Lock	7 39 1
3217-7	Nut - Hex.	15 1 1	3254-1	Washer - Lock	31 17 1
3217-7	Nut - Hex.	7 52 1	3254-1	Washer - Lock	29 19 2
3217-8	Nut - Hex.	2 8 1	3254-8	Washer - Lock	8 54 2
3217-8	Nut - Hex.	12 17 4	3254-9	Washer - Int. Tooth	16 10 2
3217-16	Nut - Hex.	16 11 2	3255-7	Washer - Ext. Tooth	10 34 1
3217-26	Nut - Hex.	7 13 1	3255-8	Washer - Lock	22 3 8
3218-3	Nut - Hex. Jam	7 24 1	3255-9	Washer - Ext. Tooth	8 66 1
3218-5	Nut - Hex. Jam	15 32 2	3256-1	Washer - Flat	25 9 8
3219-2	Nut	22 2 8	3256-1	Washer - Flat	32 16 2
3219-2	Nut - Hex.	16 6 1	3256-1	Washer - Flat	29 32 2
3219-14	Nut - Brass	8 53 6	3256-1	Washer - Flat	27 35 1
3220-3	Nut - Hex. Jam	13 21 1	3256-2	Washer - Flat	16 19 2
3220-3	Nut - Jam	4 16 2	3256-3	Washer - Flat	15 20 4
3220-3	Nut - Jam	2 21 4	3256-3	Washer - Flat	25 25 4
3220-3	Nut - Jam	11 30 12	3256-21	Washer - Flat	8 55 2
3220-5	Nut - Hex. Jam	11 36 3	3256-22	Washer - Flat	1 4 8
3220-5	Nut - Hex. Jam	2 41 2	3256-22	Washer - Flat	2 10 3
3220-5	Nut - Jam	4 14 1	3256-22	Washer - Flat	7 12 1
3220-8	Nut	2 1 1	3256-23	Washer - Flat	14 4 2
3220-12	Nut - Hex. Jam	11 34 3	3256-23	Washer - Flat	32 6 1
3230-2	Carriage - Bolt	16 12 2	3256-23	Washer - Flat	13 12 2
3230-16	Bolt - Carriage	14 34 4	3256-23	Washer - Flat	32 13 4
3231-29	Bolt - Carriage	7 35 1	3256-24	Washer - Flat	7 18 2
3232-13	Screw - Hex. Flange Hd.	18 34 2	3256-26	Washer - Flat	15 4 1
3232-16	Bolt - Carriage	2 5 1	3256-26	Washer - Flat	6 8 2
3234-4	Screw - Flange Hex. Hd.	10 27 1	3256-26	Washer - Flat	2 37 2
3234-4	Screw - Hex. Flange Hd.	13 1 4	3256-28	Washer - Flat	11 26 3
3234-4	Screw - Hex. Flange Hd.	7 1 1	3256-41	Washer - Flat	12 10 3
3234-5	Screw - Hex. Flange Hd.	25 11 2	3256-41	Washer - Flat	13 19 1
3234-11	Screw - Cap Hex. Hd.	14 27 3	3257-5	Key - Woodruff	14 11 1
3234-11	Screw - Flange Hex. Hd.	7 31 2	3257-5	Key - Woodruff	17 11 2
3234-11	Screw - Flange Lock	10 13 4	3257-5	Key - Woodruff	15 24 2
3234-11	Screw - Hex. Flange Hd.	5 31 4	3258-19	Screw - Machine	5 22 2
3234-11	Screw - Hex. Flange Hd.	7 48 1	3269-16	Rivet - Pop	5 11 4
3234-13	Screw - Hex Flange. Hd.	10 1 10	3269-16	Rivet - Pop	1 22 4
3234-13	Screw - Hex. Flange Hd.	1 9 4	3272-5	Pin - Cotter	13 15 1
3234-13	Screw - Hex. Flange Hd.	11 14 1	3272-5	Pin - Cotter	2 22 3
3234-13	Screw - Hex. Flange Hd.	25 18 1	3272-6	Pin - Cotter	19 3 1
3234-13	Screw - Hex. Flange Hd.	15 33 2	3272-10	Pin - Cotter	15 3 1
3234-13	Screw - Hex. Flange Hd.	5 33 1	3272-10	Pin - Cotter	4 3 4
3234-18	Screw - Cap Hex. Hd.	12 8 3	3272-10	Pin - Cotter	2 25 3
3234-18	Screw - Hex. Flange Hd.	10 21 2	3272-13	Pin - Cotter	11 23 2
3234-21	Screw - Hex. Flange Hd.	14 23 2	3272-17	Pin - Cotter	18 30 2
3235-23	Screw - Cap Hex. Hd.	10 22 4	3272-23	Pin - Cotter	18 1 6
3245-1	Screw - Set	15 9 4	3274-18	Screw - Cap Soc. Hd.	27 34 2
3245-1	Screw - Set	14 35 2	3274-31	Screw - Cap Button Hd.	7 27 3
3247-4	Screw - Socket Hd. Set	27 24 2	3290-134	Screw - Mach. Hex. Hd.	7 22 4
3249-11	Screw - Round Hd.	16 8 2	3290-211	Washer - Lock	1 7 4
3250-16	Screw - Mach. Pan Hd.	29 34 2	3290-357	Nut - Flange Lock	14 2 6
3251-3	Screw - Mach. Rd. Hd.	8 64 4	3290-357	Nut - Flange Lock	10 11 4
3253-2	Washer - Lock	31 4 3	3290-357	Nut - Flange Lock	7 34 1
3253-2	Washer - Lock	30 31 3	3290-378	Tie - Cable	18 7 3
3253-3	Washer - Lock	19 9 2	3290-378	Tie - Cable	7 7 1
3253-3	Washer - Lock	14 22 2	3290-378	Tie - Cable	10 17 3
3253-3	Washer - Lock	5 35 1	3290-378	Tie - Cable	15 35 1
3253-3	Washer - Lock	27 58 2	3290-378	Tie - Cable	2 36 1
3253-4	Washer - Lock	6 6 8	3290-433	Retainer - Grip Nut	7 33 1
3253-4	Washer - Lock	14 10 4	3296-2	Nut - Lock	7 23 4
3253-4	Washer - Lock	13 13 2	3296-5	Nut - Lock	13 16 1
3253-4	Washer - Lock	15 21 2	3296-5	Nut - Lock	1 17 2
3253-5	Washer - Lock	28 11 4	3296-15	Nut - Lock	11 1 1
3253-6	Washer - Lock	30 2 1	3296-16	Nut - Lock	10 3 1
3253-6	Washer - Lock	2 9 1	3296-29	Nut - Lock	14 3 2
3253-6	Washer - Lock	12 18 4	3296-29	Nut - Lock	16 20 3

\*Not Illustrated

# TORO PART NUMBER INDEX (Cont.)

Part No.	Description	Pg. Ref.		Part No.	Description	Pg. Ref.	
		No.	Qty.			No.	Qty.
3296-29	Nut - Lock	7	20	32128-20	Nut - Hex. Flange	5	30
3296-33	Nut - Lock	14	32	32128-33	Nut - Hex. Flange	2	13
3296-33	Nut - Lock	2	42	32128-33	Nut - Hex. Flange	1	14
3296-39	Nut - Lock	6	12	32128-33	Nut - Hex. Flange Hd.	19	10
3296-39	Nut - Lock	7	14	32128-33	Nut - Hex. Flange Hd.	5	38
3296-42	Nut - Lock	16	1	32128-49	Nut - Hex. Flange	4	12
3296-42	Nut - Lock	7	28	32136-5	Nut - Hex. Castle	11	25
3296-42	Nut - Lock	7	49	32140-16	Screw - Self Tap. Hex. Hd.	1	5
3296-44	Nut - Lock	11	4	32144-10	Screw - Hex. Self Tap	2	33
3296-49	Nut - Lock	11	8	32144-11	Screw - Self Tap. Hex. Hd.	13	14
32104-17	Screw - Flange Hex. Hd.	13	28	32149-2	Nut - Lock	19	4
32104-60	Screw - Flange Hex. Hd.	7	51	32149-2	Nut - Lock	10	25
32104-116	Screw - Flange Hex. Hd.	13	8	32149-7	Nut - Keps	8	67
32104-116	Screw - Flange Hex. Hd.	8	58	32151-36	Ring - Retaining	11	16
32107-11	Nut - Square	5	21	32151-46	Ring - Retaining	17	1
32120-72	Ring - Retaining	15	27	32152-5	Nut - Lock	15	14
32121-4	Pin - Roll	5	43	32152-10	Nut - Jam	21	2
32121-6	Pin - Roll	4	7	340-77	90° Elbow	18	2
32121-6	Pin - Roll	5	42	340-125	Fitting - Tee, Adjustment	18	36
32121-10	Pin - Roll	2	19	353-428	Elbow - Male 90°	10	6
32121-15	Pin - Roll	23	35	353-536	Elbow - 90°	12	1
32121-18	Pin - Roll	5	45	353-565	Fitting - Connector	18	26
32121-31	Pin - Roll	13	6	353-567	Fitting - Tee, Male	18	25
32121-34	Pin - Roll	14	39	353-705	45° Elbow	12	4
32121-73	Pin - Roll	19	14	353-714	Elbow - Male 45°	10	12
32121-91	Pin	17	14	354-18	Fitting - Hose Barb	23	32
32121-119	Pin - Roll	14	40	354-24	Fitting	18	21
32128-19	Nut - Flange	1	18				

## TABLE OF CONTENTS

Description	Page	Description	Page
Hood Assembly	1	Blower & Crankshaft Assembly	30
Pedals & Steering Wheel Assembly	2	Air Cleaner & Choke Assembly	31
Steering Gear Assembly No. 41-8820	3	Carburetor Assembly	32
Traction Pedal Assembly	4	Starter Assembly	33
Seat Mount & Air Cleaner Assembly	5	Part Number Index	34-40
Seat Assembly	6		
Instrument Panel & Steering Post Assembly	7-8		
Electrical Schematic	9	Optional Equipment	
Engine Assembly	10	52" Cutting Deck Model No. 30652	
Rear Axle Assembly	11	62" Cutting Deck Model No. 30662	
Fuel Tank and Axle Assembly	12	Kit, Blower Model No. 30502, 52"	
Power Take-Off Lever Assembly	13	(Requires Hopper Kit)	
Power Take-Off Assembly	14	Kit, Blower Model No. 30503, 62"	
Transmission & Drive Coupling Assembly	15	(Requires Hopper Kit)	
Transmission Interlock Assembly	16	Kit, Hopper 9 cu.ft. Model No. 30504 52" / 62"	
Transmission Assembly No. 49-7910	17	Cutting Units (Requires Blower Kit)	
Hydraulic Valve & Lift Arm Cylinders	18	Leaf Mulcher Model No. 30700 For 52"C/U	
Valve & Lever Assembly	19	Leaf Mulcher Model No. 30792 For 62"C/U	
Valve Assembly No. 43-1700	20	Tire Chains Part No. 28-5470	
Hydraulic Cylinder No. 68-9700	21	Wheel Weight Model No. 30762	
Differential Assembly	22-23	Rear Weight Part No. 24-2790	
Brake Assembly	24	Spark Arrestor Part No. 46-2390	
Engine Air Housing	25	Kit, Deluxe Seat Conversion Model No. 30705	
Cylinder Block Assembly	26-27	V-Plow 48" For Snow Removal, Model No. 30750	
Oil Base & Fuel Pump	28	Kit, V-Plow Mounting Model No. 30749	
Ignition Control Assembly	29	( Required For V-Plow)	

\*Not Illustrated