



Replacement Dipstick Kit

Form No. 3359-116 Rev A

Model No. 114-4138

Model No. 115-0940

Installation Instructions

Loose Parts

Use the chart below to verify that all parts have been shipped.

Procedure	Description	Qty.	Use
1	No parts required	—	Remove the Existing Cap/Adapter System
2	Oil fill cap O-ring seal (Toro Part No. 57-9610) Thread forming screw Dipstick	1 1 1 1	Install New Dipstick Cap

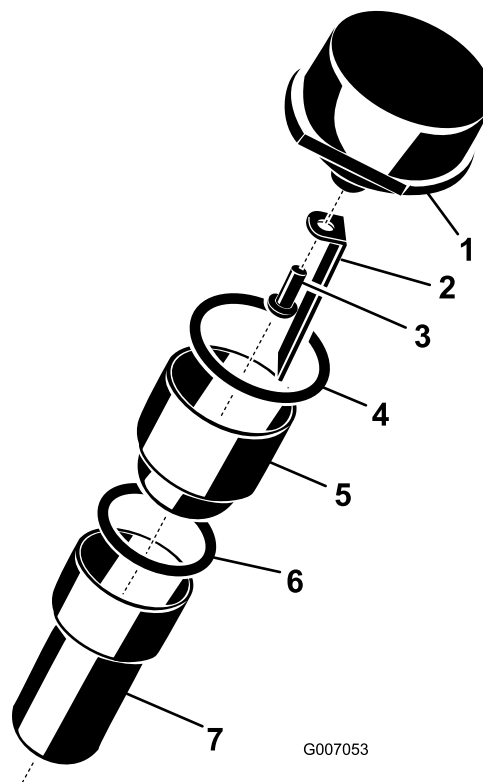
1

No Parts Required

Remove Existing Cap/Adapter System

1. Unscrew and remove the oil fill cap from the adapter (Figure 1).
2. Unscrew the adapter from the dipstick tube (Figure 1).

Note: Make sure the lower O-ring is removed from the adapter/dipstick tube (Figure 1). Discard all components.



G007053

Figure 1

- | | |
|-----------------|------------------|
| 1. Oil fill cap | 5. Adapter |
| 2. Dipstick | 6. O-ring |
| 3. Screw | 7. Dipstick tube |
| 4. O-ring | |

2

Install New Dipstick Cap

Parts needed for this procedure:

1	Oil fill cap
1	O-ring seal (Toro Part No. 57-9610)
1	Thread forming screw
1	Dipstick

Procedure

1. Install an O-ring (Toro Part No. 57-9610) onto the new oil fill cap. Push the O-ring past the threads and into the groove above the cap's threads (Figure 2).

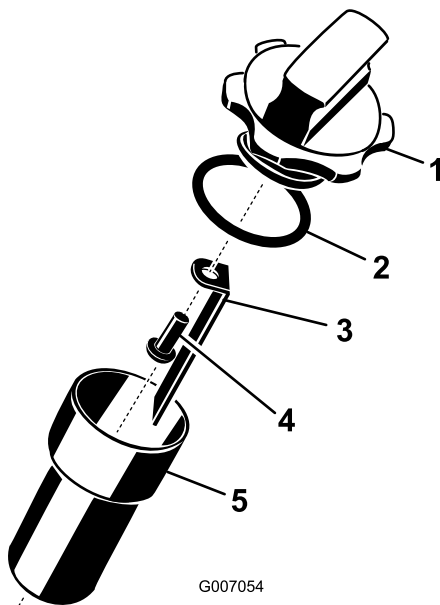


Figure 2

- | | |
|-----------------|-------------------------|
| 1. Oil fill cap | 4. Thread forming screw |
| 2. O-ring | 5. Dipstick tube |
| 3. Dipstick | |
-
2. Install the dipstick to the oil fill cap with the thread forming screw (Figure 2).
 3. Thread the oil fill cap into the dipstick tube until the O-ring is properly seated on the cap.