



72in DFS E-Z Vac™ Collection System Z500 Series Z Master® Mowers

Model No. 78545 - 280000001 and up.

Parts Catalog

Ordering Replacement Parts

To order replacement parts, please supply the part number, the quantity, and the description of each part desired.

Understanding Reference Numbers

Each Identified part in an illustration has a reference number. The reference number for a part also appears in the parts list, along with other information about the part.

This catalog uses two special reference number formats, one to indicate parts in a service assembly and another to indicate the quantity of a given part in an illustration.

Service Assembly Reference Numbers

Parts in service assemblies have reference numbers in the form a:b. The a represents the reference number of the entire service assembly and the b represents a sequential number unique to each part within the service assembly.

For example, a wheel assembly might be identified by reference number 6, the tire by 6:1, the valve by 6:2, and the wheel by 6:3. When you order the assembly identified by reference number 6, you receive all parts identified by reference numbers 6:1, 6:2, and 6:3. However, you may also order any part individually. Reference numbers of this type appear in illustrations and in part lists.

Reference Numbers Indicating Quantity

In an illustration, if a reference number indicates more than one part, the reference number has the form nX y. The n represents the quantity of the part, the X is the multiplication symbol, and the y represents the reference number.

For example, in an illustration, the reference number 2X 37 means that two of the parts identified by reference number 37 are indicated.

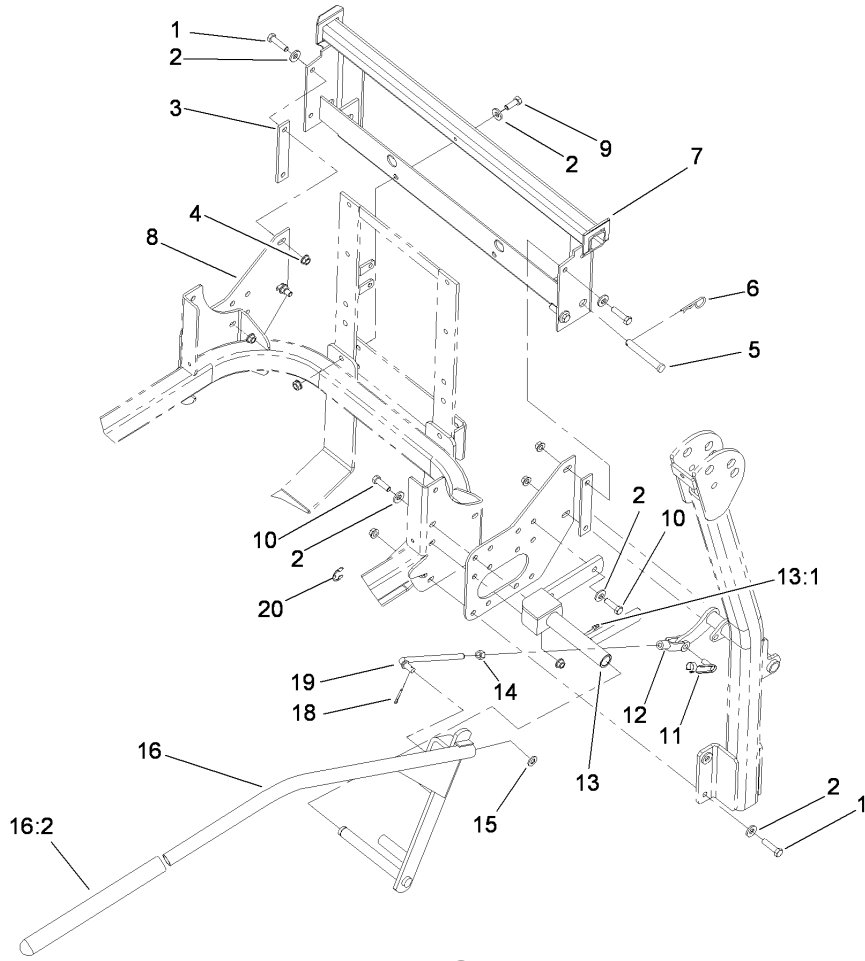
Contents

Description	Page	Description	Page
Z590-D Series Bagger Mounting Assembly 3	Hood Assembly 6
Z580-D Series Bagger Mounting Assembly 4	Tube Assembly 7
Z500 Gas Series Bagger Mounting Assembly 5	Weight Assembly 8
		Bagger Assembly 9

Part Description Abbreviations

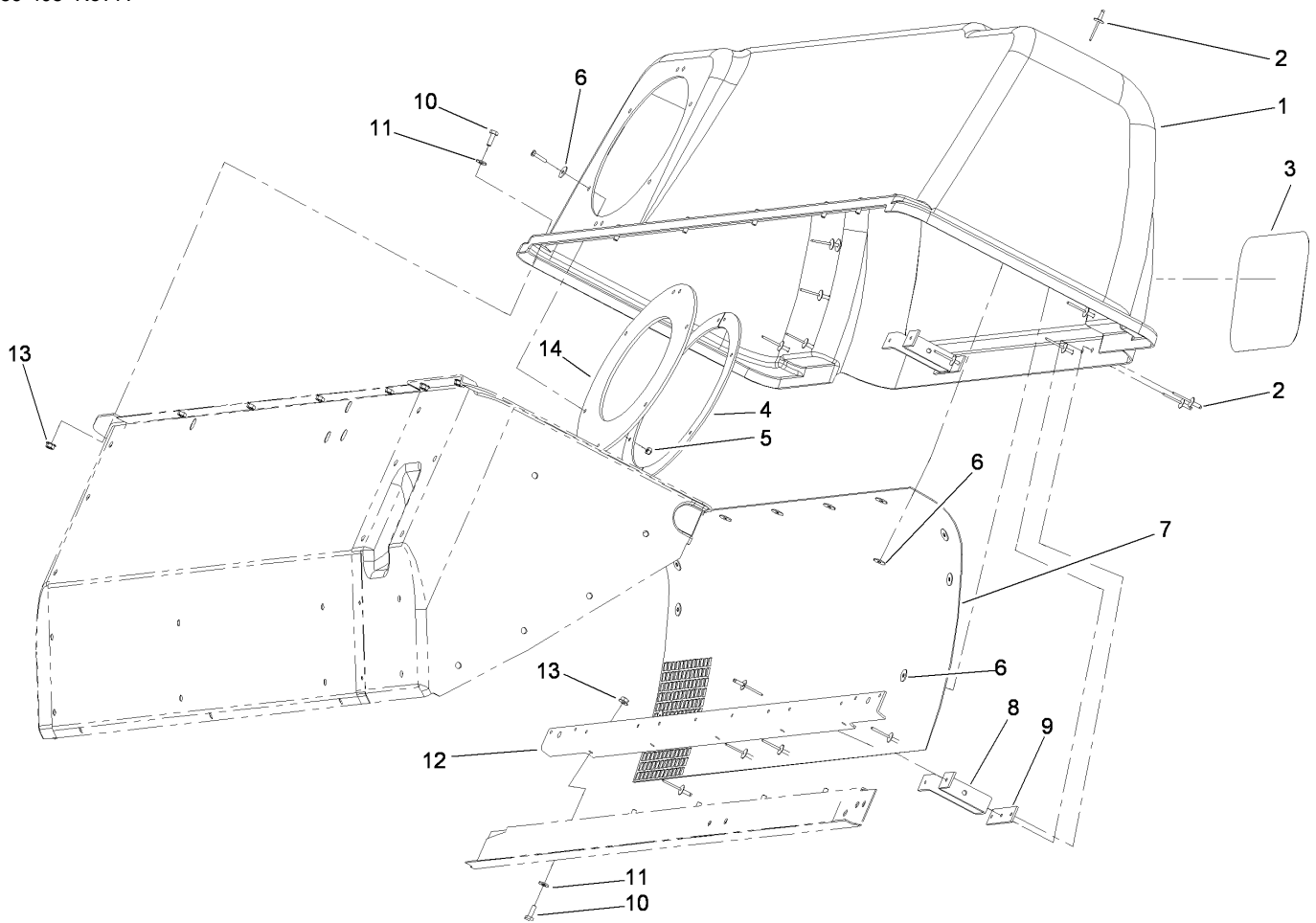
Part descriptions in this catalog may include the following abbreviations.

AR. as required	HYD. hydraulic
ASM. assembly	LH. left hand
BBC. blade brake clutch	NI. nylon insert
CARR. carriage	NPTF. national pipe thread fine
DEG. degrees	PFH. phillips flat head
EXT. external	PPH. phillips pan head
FH. flat head	PPHTF. phillips pan head thread forming
GA. gauge	PRH. phillips round head
HD. heavy-duty	PTH. phillips truss head
HF. hex flange	PTO. power-take-off
HH. hex head	RH. right hand
HHF. hex head flange	ROPS. roll-over protection system
HHFTF. hex head flange thread forming	SFH. slotted fillister head
HJ. hex jam	SHH. slotted hex head
HLH. hex lag head	SHWH. slotted hex washer head
HOC. height-of-cut	SPH. slotted pan head
HSBH. hex socket button head	SQH. square head
HSFH. hex socket flat head	SRH. slotted round head
HSH. hex socket head	STD. standard
HWH. hex washer head	TAP. self tapping
HWHTF. hex washer head thread forming	TTH. torx truss head



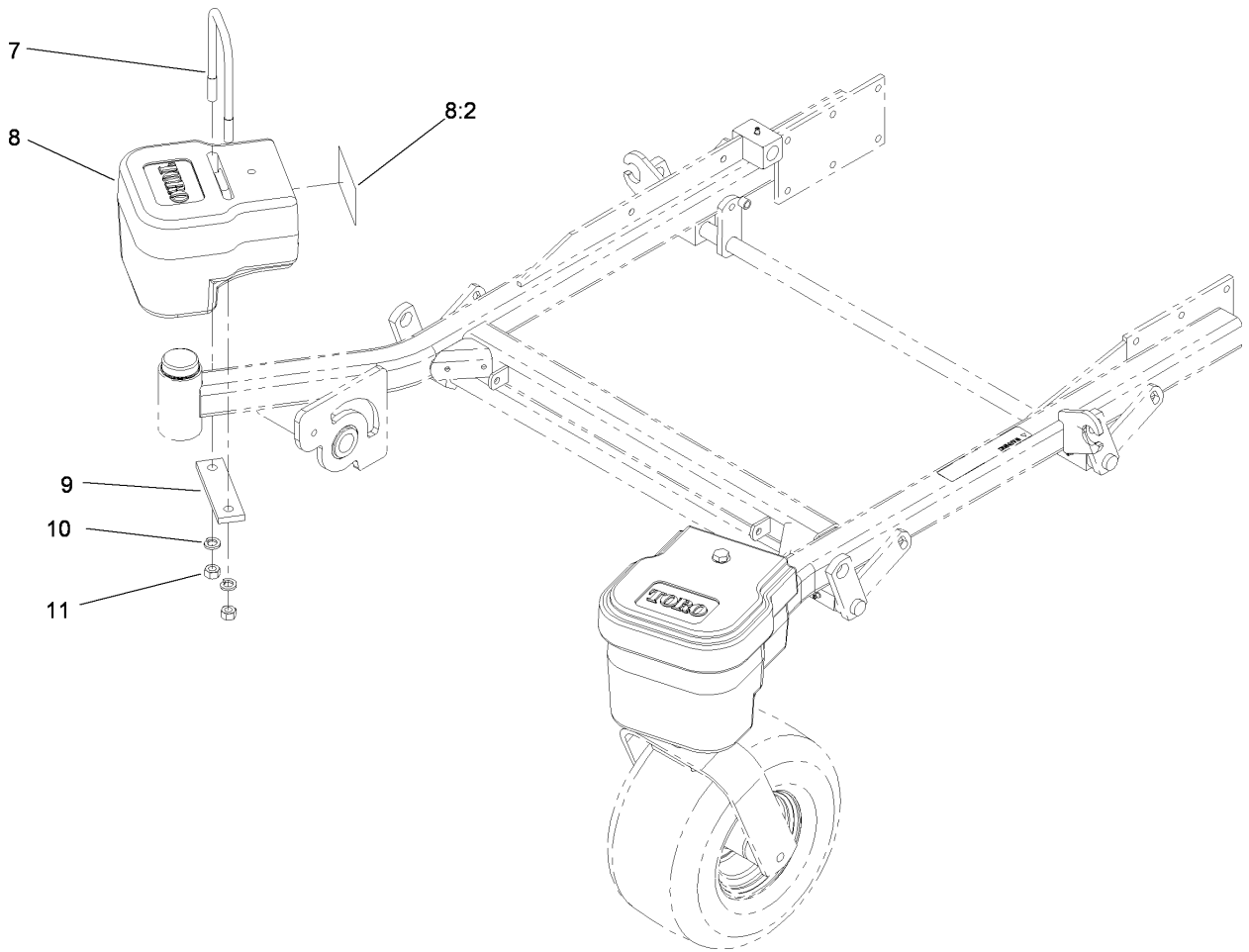
Z580-D Series Bagger Mounting Assembly

Ref	Part No.	Qty.	Description
1	323-8	14	Screw-HH
2	98-5975	16	Washer-Belleville
3	103-1155-03	2	Spacer
4	3290-357	16	Nut-HHF, Whiz
5	283-69	2	Pin-Clevis
6	1-806005	2	Pin-Hair
7	103-0429-03	1	Mount-Bagger
8	110-0830-03	2	Plate-Mount, Bagger
9	323-6	2	Screw-HH
10	323-7	2	Screw-HH
11	103-2399	1	Pin-Spring, Clevis
12	1-633131	1	Yoke-Linkage, Brake
13	114-8243-03	1	Handle-Mount
13:1	302-19	1	Fitting-Grease
14	3219-3	1	Nut-Hex
15	3256-24	1	Washer-Flat
16	115-3568	1	Handle ASM
16:2	103-3005	1	Grip-Handle
18	3272-10	1	Pin-Cotter
19	103-2413	1	Link-Handle
20	32151-48	1	E-Ring



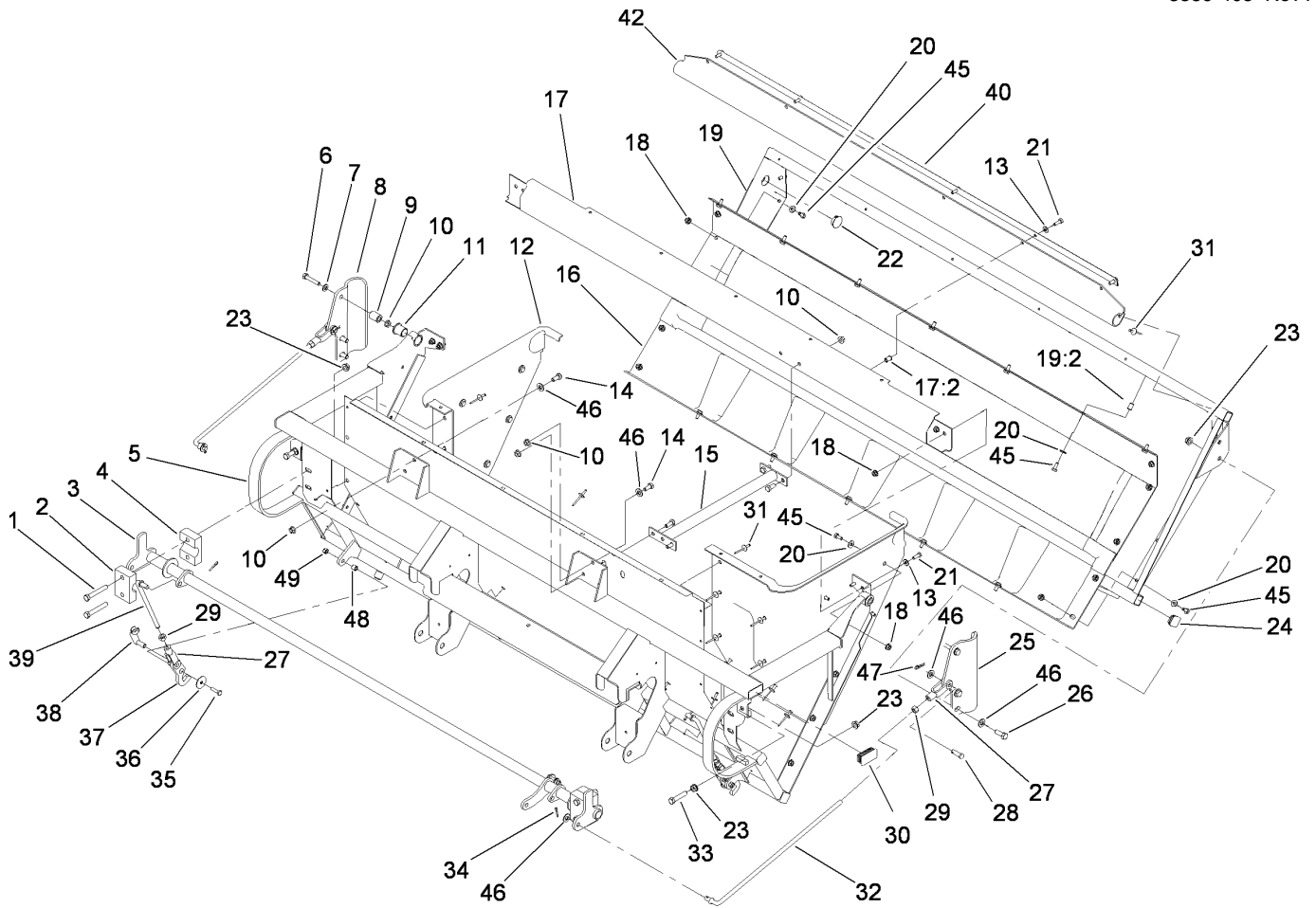
Hood Assembly

Ref	Part No.	Qty.	Description
1	114-8246	1	Dfs Hood ASM
2	114439	33	Rivet-Pop
3	67-7310	1	Decal
4	103-0378	2	Clamp-Seal
5	3296-2	6	Nut-Lock
6	3256-61	23	Washer-Flat
7	103-0440	1	Screen-Bagger
8	103-0379	2	Bracket-Mount
9	103-0376	2	Plate-Latch, Reinforcement
10	321-4	12	Screw-HH
11	3256-22	12	Washer-Flat
12	103-2662-03	1	Support-Screen
13	32128-33	12	Nut-HF
14	103-0439	1	Seal-Tube



Weight Assembly

Ref	Part No.	Qty.	Description				
7	106-5543	2	U-Bolt				
8	106-0872	2	Weight ASM				
8:2	106-0871	1	Decal-Warning, Counterweight				
9	105-9672-01	2	Plate				
10	3253-27	4	Washer-Lock				
11	3217-9	4	Nut-HH				



Bagger Assembly

Ref	Part No.	Qty.	Description
1	323-12	4	Screw-HH
2	103-8057	1	Block-Bearing
3	103-2412-03	1	Link-Intermediate
4	103-2409	3	Half-Block, Bearing
5	103-4742-03	1	Upright-Bagger
6	322-9	2	Screw-HH
7	3256-23	2	Washer-Flat
8	103-3331-03	1	Arm-Hinge, RH
9	103-2361	2	Pin-Pivot, Hinge
10	32128-20	8	Nut-HF
11	103-2377	2	Bushing
12	103-7827	1	Panel-Bagger, RH
13	3256-22	10	Washer-Flat
14	322-3	6	Screw-HH
15	103-2414-03	1	Support
16	103-2383	1	Bag And Bottom Panel ASM
17	103-2710	1	Rear Crossmember ASM
17:2	32148-6	6	Insert-Nut
18	32128-33	24	Nut-HF
19	103-2737	1	Door ASM
19:2	32148-6	12	Insert-Nut
20	3256-2	32	Washer-Flat
21	321-4	10	Screw-HH
22	103-8018	2	Plug-Dome

Ref	Part No.	Qty.	Description
23	3290-357	12	Nut-HHF, Whiz
24	103-3202	6	Cap
25	103-3332	1	Arm-Hinge, LH
26	323-6	4	Screw-HH
27	1-633131	4	Yoke-Linkage, Brake
28	1-808285	2	Pin-Clevis
29	3219-3	4	Nut-Hex
30	103-3201	2	Cap
31	114439	23	Rivet-Pop
32	103-2365	2	Link-Hinge
33	323-53	2	Bolt-TAP
34	3272-10	2	Pin-Cotter
35	321-6	2	Screw-HH
36	3256-55	2	Washer-Flat
37	103-3191-03	2	Latch
38	103-2399	2	Pin-Spring, Clevis
39	103-2413	2	Link-Handle
40	103-3010-03	1	Strap-Hold Down
42	103-2360	1	Seal-Door Hinge
45	321-3	32	Screw-HH
46	3256-24	10	Washer-Flat
47	1-806003	2	Pin-Hair
48	1-633545	2	Spacer
49	3296-42	2	Nut-Lock, NI

NOTES

NOTES

