



## Z500 Z Master<sup>®</sup> With 60in 7-Gauge Side Discharge Mower

Model No. 74292 - 280000001 and up.

### Parts Catalog

---

#### Ordering Replacement Parts

To order replacement parts, please supply the part number, the quantity, and the description of each part desired.

#### Understanding Reference Numbers

Each identified part in an illustration has a reference number. The reference number for a part also appears in the parts list, along with other information about the part.

This catalog uses two special reference number formats, one to indicate parts in a service assembly and another to indicate the quantity of a given part in an illustration.

#### Service Assembly Reference Numbers

Parts in service assemblies have reference numbers in the form a:b. The a represents the reference number of the entire service assembly and the b represents a sequential number unique to each part within the service assembly.

For example, a wheel assembly might be identified by reference number 6, the tire by 6:1, the valve by 6:2, and the wheel by 6:3. When you order the assembly identified by reference number 6, you receive all parts identified by reference numbers 6:1, 6:2, and 6:3. However, you may also order any part individually. Reference numbers of this type appear in illustrations and in part lists.

#### Reference Numbers Indicating Quantity

In an illustration, if a reference number indicates more than one part, the reference number has the form nX y. The n represents the quantity of the part, the X is the multiplication symbol, and the y represents the reference number.

For example, in an illustration, the reference number 2X 37 means that two of the parts identified by reference number 37 are indicated.

# Contents

Description	Page	Description	Page
Front Frame Assembly	3	Fuel System Assembly	26
Caster and Wheel Assembly	5	Electrical Assembly	27
Main Frame and Rear Wheel Assembly	6	Crankshaft Assembly Kohler CH740 0075	28
Brake and Wheel Hub Assembly	7	Crankcase Assembly Kohler CH740 0075	29
Steering Control Assembly	8	Oil Pan / Lubrication Assembly Kohler CH740 0075	30
LH Motion Control Assembly No. 109-3906	9	Head / Valve / Breather Assembly Kohler CH740 0075	31
RH Motion Control Assembly No. 109-3707	10	Ignition / Electrical Assembly Kohler CH740 0075	32
Hydraulic Assembly	11	Blower Housing and Baffle Assembly Kohler CH740 0075	33
Pump Idler Assembly No. 103-5679	13	Starting System Assembly Kohler CH740 0075	34
Roll-Over Protection System Assembly	14	Fuel System Assembly Kohler CH740 0075	35
Seat and Bracket Assembly No. 110-0446	15	Engine Control Assembly Kohler CH740 0075	36
Roll-Over Protection System Assembly No. 108-1097	16	Air Intake / Filtration Assembly Kohler CH740 0075	37
Deck Connection Assembly	17	Exhaust Assembly Kohler CH740 0075	38
Deck Assembly	18	Decals Kohler CH740 0075	39
Spindle Assembly No. 107-8504	20	Attachments and Accessories List	40
Deck Decal Assembly No. 115-2781	21		
Rubber Deflector Assembly No. 108-7770	22		
Drive Idler Assembly	23		
Engine and Clutch Assembly	24		
Muffler and Guard Assembly	25		

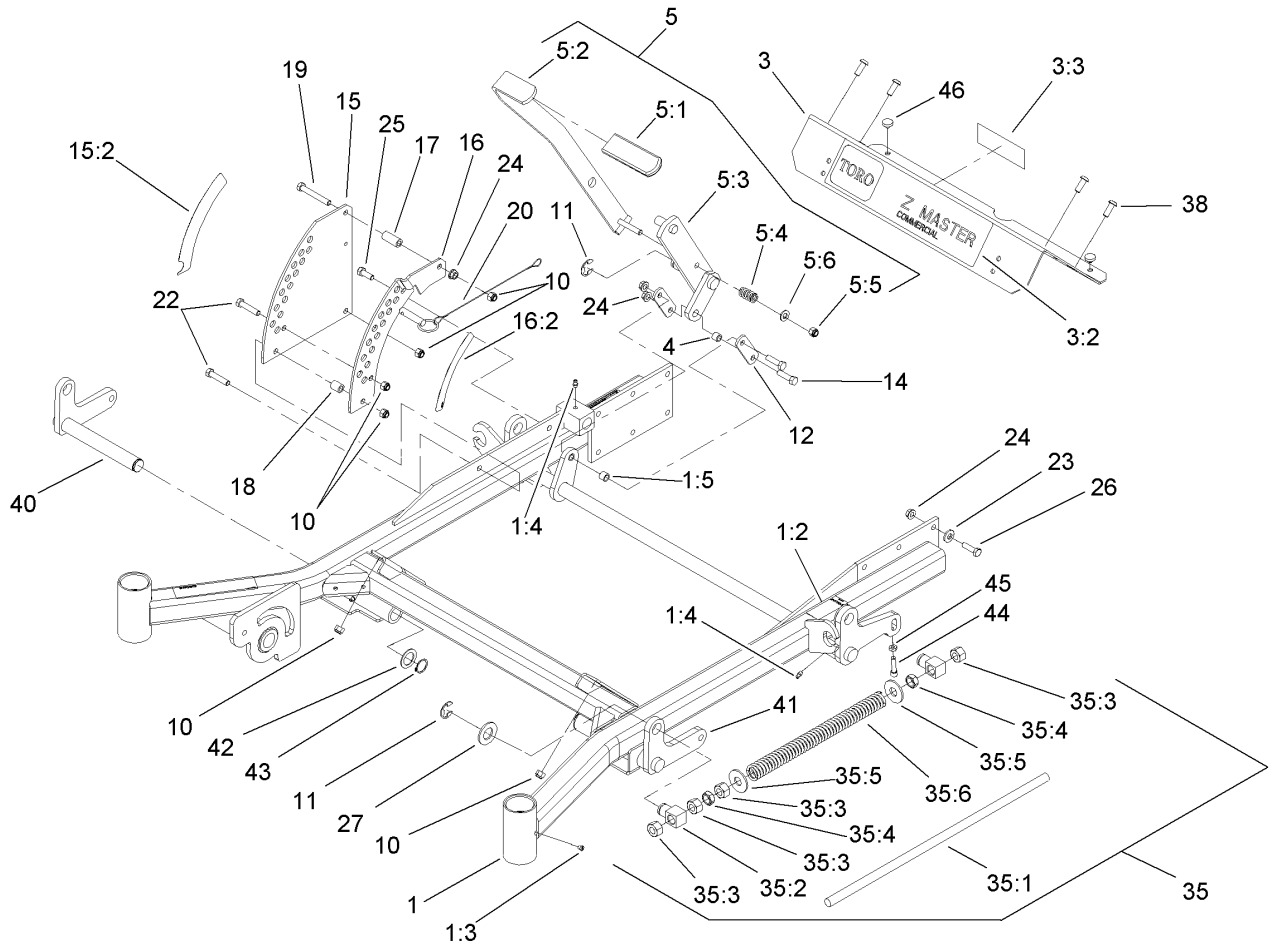
## Part Description Abbreviations

Part descriptions in this catalog may include the following abbreviations.

AR. .... as required	HYD. .... hydraulic
ASM. .... assembly	LH. .... left hand
BBC. .... blade brake clutch	NI. .... nylon insert
CARR. .... carriage	NPTF. .... national pipe thread fine
DEG. .... degrees	PFH. .... phillips flat head
EXT. .... external	PPH. .... phillips pan head
FH. .... flat head	PPHTF. .... phillips pan head thread forming
GA. .... gauge	PRH. .... phillips round head
HD. .... heavy-duty	PTH. .... phillips truss head
HF. .... hex flange	PTO. .... power-take-off
HH. .... hex head	RH. .... right hand
HHF. .... hex head flange	ROPS. .... roll-over protection system
HHFTF. .... hex head flange thread forming	SFH. .... slotted fillister head
HJ. .... hex jam	SHH. .... slotted hex head
HLH. .... hex lag head	SHWH. .... slotted hex washer head
HOC. .... height-of-cut	SPH. .... slotted pan head
HSBH. .... hex socket button head	SQH. .... square head
HSFH. .... hex socket flat head	SRH. .... slotted round head
HSH. .... hex socket head	STD. .... standard
HWH. .... hex washer head	TAP. .... self tapping
HWHTF. .... hex washer head thread forming	TTH. .... torx truss head

## Footnotes

- |                      |  |
|----------------------|--|
| ❶ Not illustrated    | ❷ Not serviced separately              |
| ❸ Optional Equipment | ❹ Obtain from your local Kohler dealer |

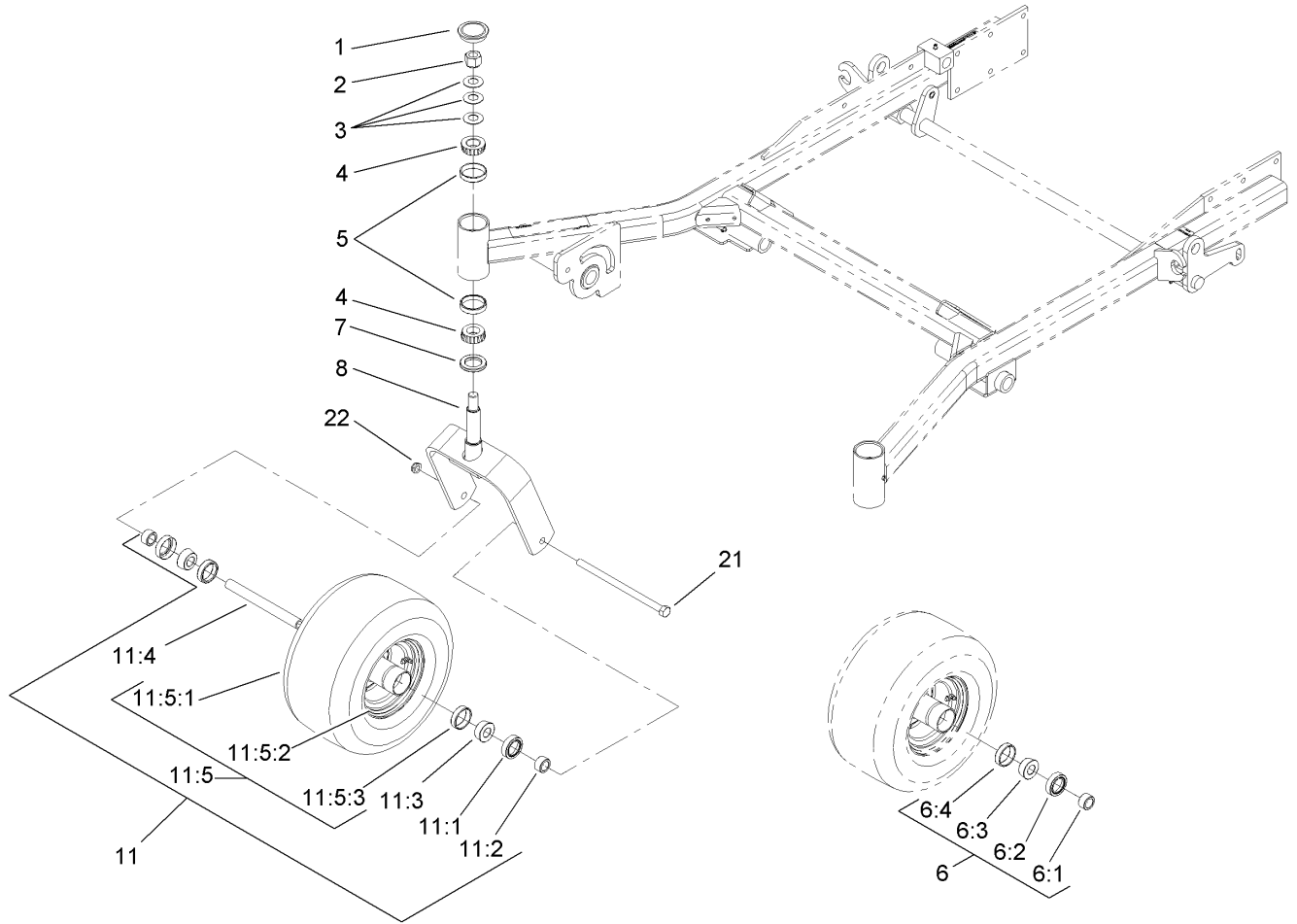


## Front Frame Assembly

Ref	Part No.	Qty.	Description
1	107-8085	1	Frame ASM
1:2	107-1857	1	Decal-Brake, Parking
1:3	1-811010	2	Plug
1:4	302-19	5	Fitting-Grease
1:5	103-1918	1	Bushing
3	106-9981	1	Footrest
3:2	106-7451	1	Decal
3:3	107-2112	1	Decal-Warning
4	103-1918	1	Bushing
5	110-5860	1	Deck Lift Handle ASM
5:1	1-633295	1	Grip-Lever, Lift
5:2	103-2083	1	Lever-Lift
5:3	103-2064	1	Arm-Lift, Deck
5:4	1-633325	1	Spring-Compression
5:5	3296-39	1	Nut-Lock, NI
5:6	3256-24	1	Washer-Flat
10	3296-39	8	Nut-Lock, NI
11	32151-103	5	Ring-Retaining, EXT
12	1-633068	2	Arm-Lift, Deck
14	323-29	2	Screw-HH
15	110-0833	1	Plate-Deck Lift, Outer
15:2	107-1860	1	Decal-Height, Deck
16	110-0834	1	Plate-Deck Lift, Inner
16:2	107-1861	1	Decal-Height, Deck

Ref	Part No.	Qty.	Description
17	1-633082	1	Bushing-Lever, Lift
18	1-633080	1	Bushing-Lever, Lift
19	323-13	1	Screw-HH
20	106-9951	1	Hitch Pin ASM
22	323-9	2	Screw-HH
23	98-5975	12	Washer-Belleville
24	3290-357	15	Nut-HHF, Whiz
25	323-6	1	Screw-HH
26	323-7	12	Screw-HH
27	3256-29	4	Washer-Flat
35		2	Front Frame Spring ASM
35:1	1-633096	1	Rod-Lift, Deck
35:2	1-633441	2	Swivel-Deck Mount, Rear
35:3	3217-11	4	Nut-Hex
35:4	3218-6	2	Nut-Jam
35:5	3256-7	2	Washer-Flat
35:6	1-633064	1	Spring-Support, Deck
38	3274-94	4	Screw-HSBH
40	110-4156-01	1	RH Deck Lift ASM
41	106-8984-01	1	LH Deck Lift ASM
42	1-523157	2	Washer-Spacer
43	32151-29	2	Ring-Retaining
44	3274-18	2	Screw-HSH
45	3218-2	2	Nut-Jam

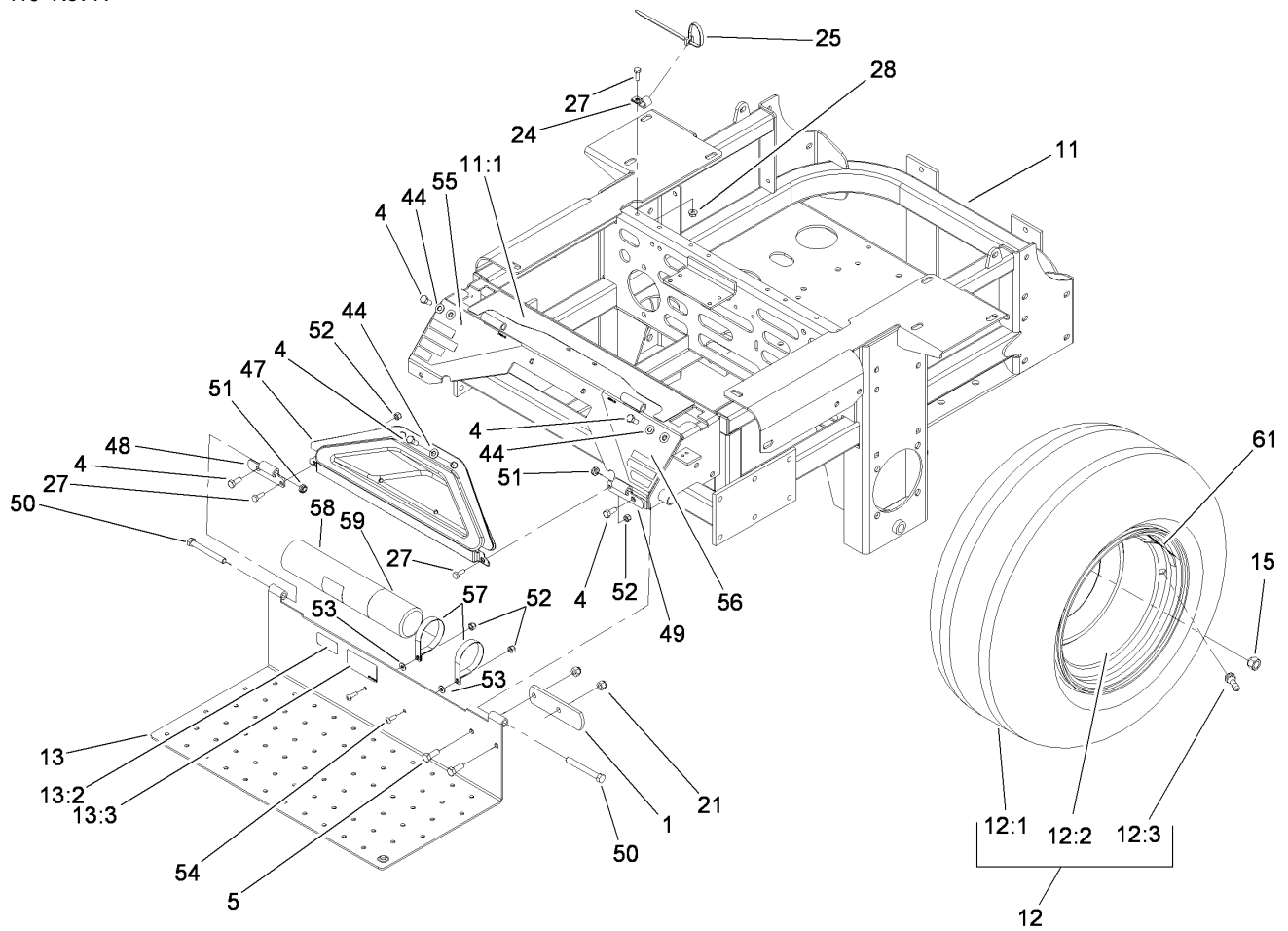




## Caster and Wheel Assembly

Ref	Part No.	Qty.	Description
1	103-4882	2	Cap-Grease
2	3296-51	2	Nut-Lock, NI
3	1-633508	6	Washer-Bellville
4	254-94	4	Bearing-Cone, Tapered
5	254-72	4	Bearing-Cup, Tapered
6	110-8837	1	Caster Wheel Bearing Kit
6:1	1-633581	2	Spacer-Bearing
6:2	1-633580	2	Seal-Bearing
6:3	1-633584	2	Bearing-Cup
6:4	1-633585	2	Bearing-Cone, Taper
7	1-543511	2	Seal-Grease
8	103-1474-01	2	Fork-Caster
11	1-644251	2	Caster Wheel ASM
11:1	1-633580	2	Seal-Bearing
11:2	1-633581	2	Spacer-Bearing
11:3	1-633585	2	Bearing-Cone, Taper
11:4	1-633959	1	Spacer-Caster, Front
11:5		1	Wheel And Tire ASM
11:5:1	1-523009	1	Tire
11:5:2	1-633987	1	Wheel
11:5:3	1-633584	2	Bearing-Cup
21	325-39	2	Screw-HH
22	3296-23	2	Nut-Lock, NI

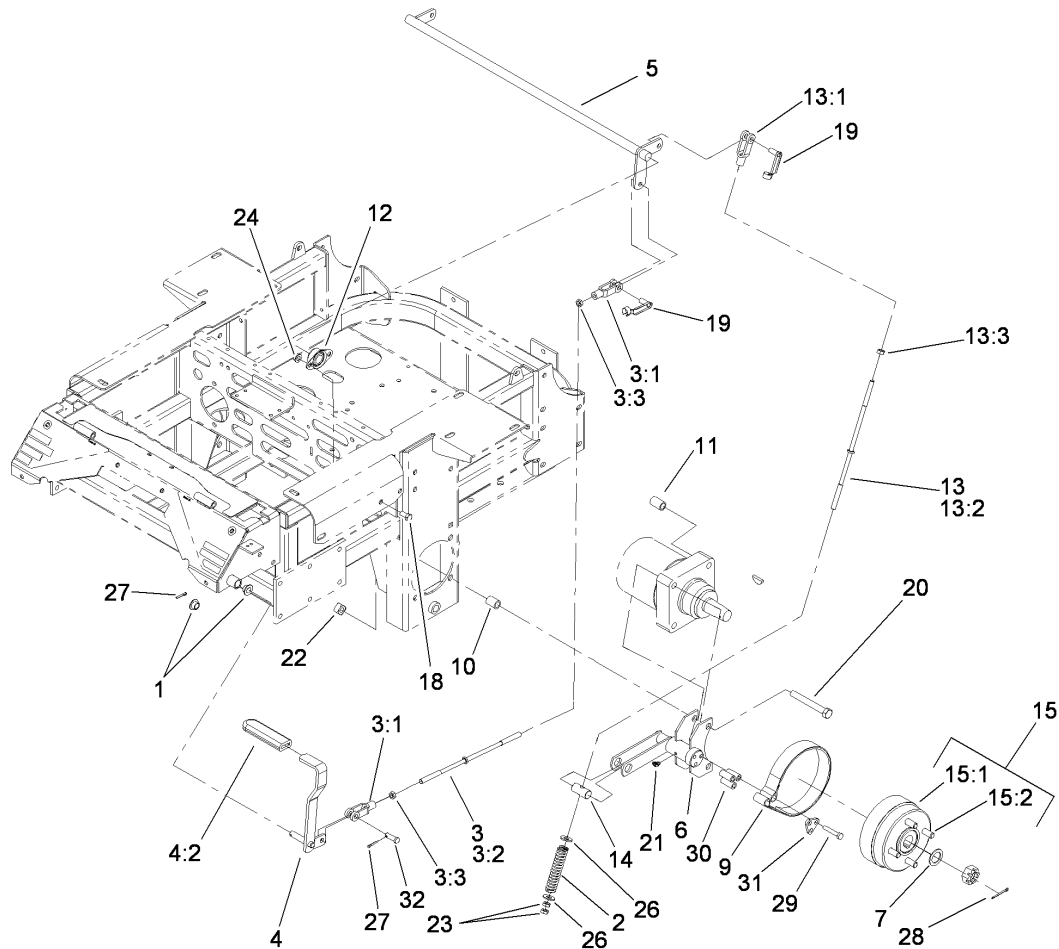
Ref	Part No.	Qty.	Description



## Main Frame and Rear Wheel Assembly

Ref	Part No.	Qty.	Description
1	1-633964-03	1	Stop-Brake, Park
4	322-43	6	Screw-HH
5	323-6	2	Screw-HH
11	114-1509	1	Frame ASM
11:1	107-8076	1	Decal-Console, Top
12	1-633970	2	Wheel And Tire ASM
12:1	1-633993	1	Tire
12:2	1-633992	1	Wheel Rim
12:3	232-27	1	Stem-Valve
13	107-1858	1	Floorpan
13:2	98-4387	1	Decal-Protection, Ear
13:3	107-1864	1	Decal-Location, Manual
15	242-50	8	Nut-Lug
21	3296-39	2	Nut-Lock, NI
24	1-513762	1	Clip-Loom
25	1-303335	2	Tie-Plastic
27	321-4	3	Screw-HH
28	32128-33	1	Nut-HF
44	3256-70	6	Washer-Flat
47	106-7498	1	Pocket
48	106-7488-03	1	Hinge-Floorpan, LH
49	106-7489-03	1	Hinge-Floorpan, RH
50	323-20	2	Screw-HH
51	3296-59	2	Nut-Lock, NI

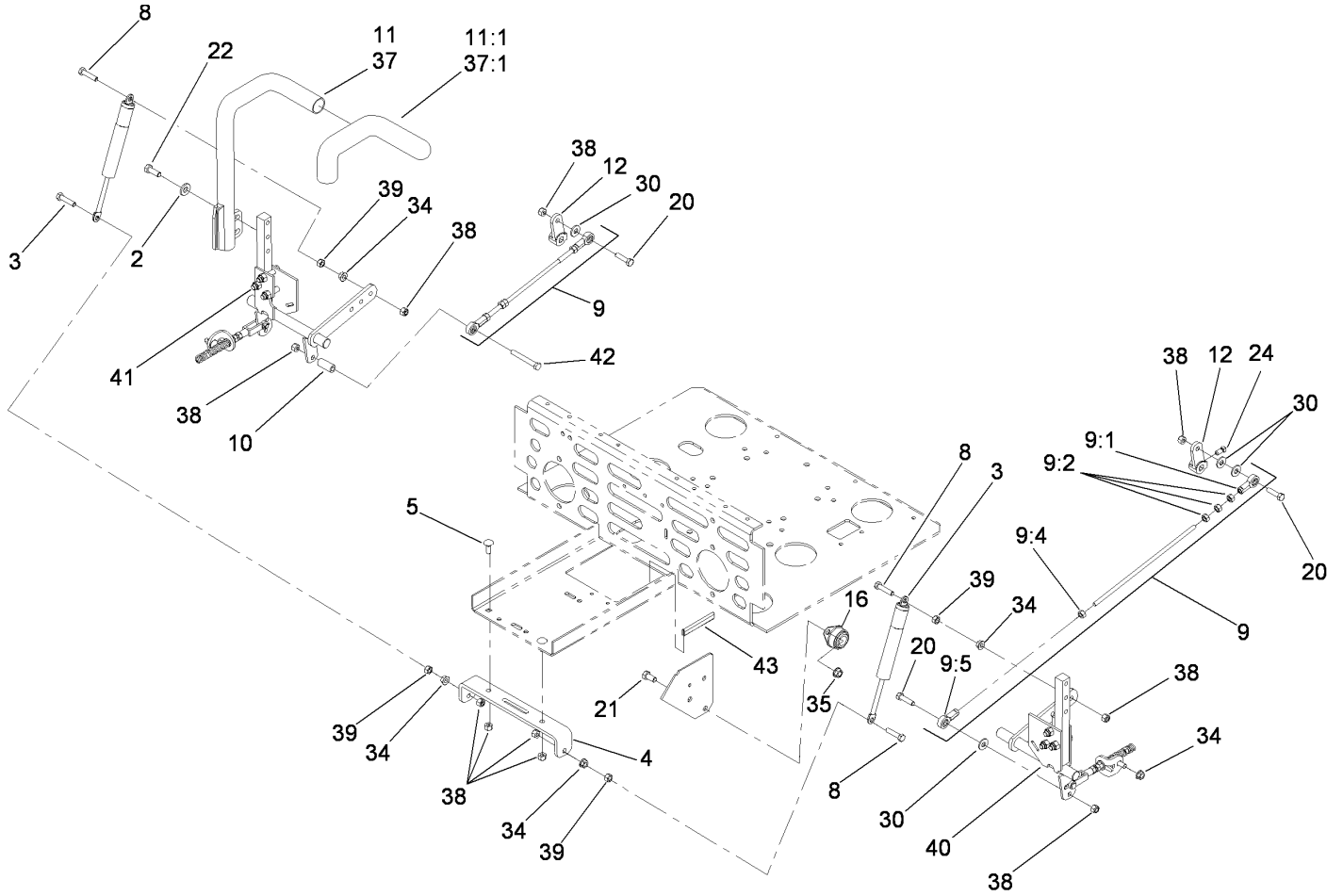
Ref	Part No.	Qty.	Description
52	3296-42	4	Nut-Lock, NI
53	3256-63	2	Washer-Flat
54	3258-166	2	Screw-PRH
55	106-9989	1	Decal-Warning
56	106-7492	1	Decal-Danger
57	107-1865	2	R-Clamp
58	104-7050	1	Housing-Manual
59	104-7048	1	Cap-Housing
61	109-7949	2	Decal-Wheel Hub, Slotted Nut



## Brake and Wheel Hub Assembly

Ref	Part No.	Qty.	Description
1	1-513140	2	Bearing-Control
2	1-633454	2	Spring-Brake
3	103-4332	1	Brake Rod And Yoke ASM
3:1	1-633131	2	Yoke-Linkage, Brake
3:2	1-633477	1	Rod-Brake
3:3	3219-3	2	Nut-Hex
4	1-634500	1	Brake Lever ASM
4:2	1-633268	1	Grip-Lever, Brake
5	1-632217-03	1	Shaft-Brake
6	103-0352-03	2	Bracket-Brake
7	1-523157	2	Washer-Spacer
9	103-0355	2	Band-Brake
10	1-633380	4	Spacer-Wheel, Short
11	1-633382	4	Spacer-Wheel, Long
12	1-633102	2	Bearing-Flange, Side
13	103-4333	2	Brake Rod And Yoke ASM
13:1	1-633131	1	Yoke-Linkage, Brake
13:2	1-633477	1	Rod-Brake
13:3	3219-3	1	Nut-Hex
14	1-633144	2	Pin-Trunion
15	103-0590	2	Hub And Wheel ASM
15:1	103-0589	1	Wheel Hub ASM
15:2	1-633926	4	Stud-Wheel
18	323-4	4	Screw-HH

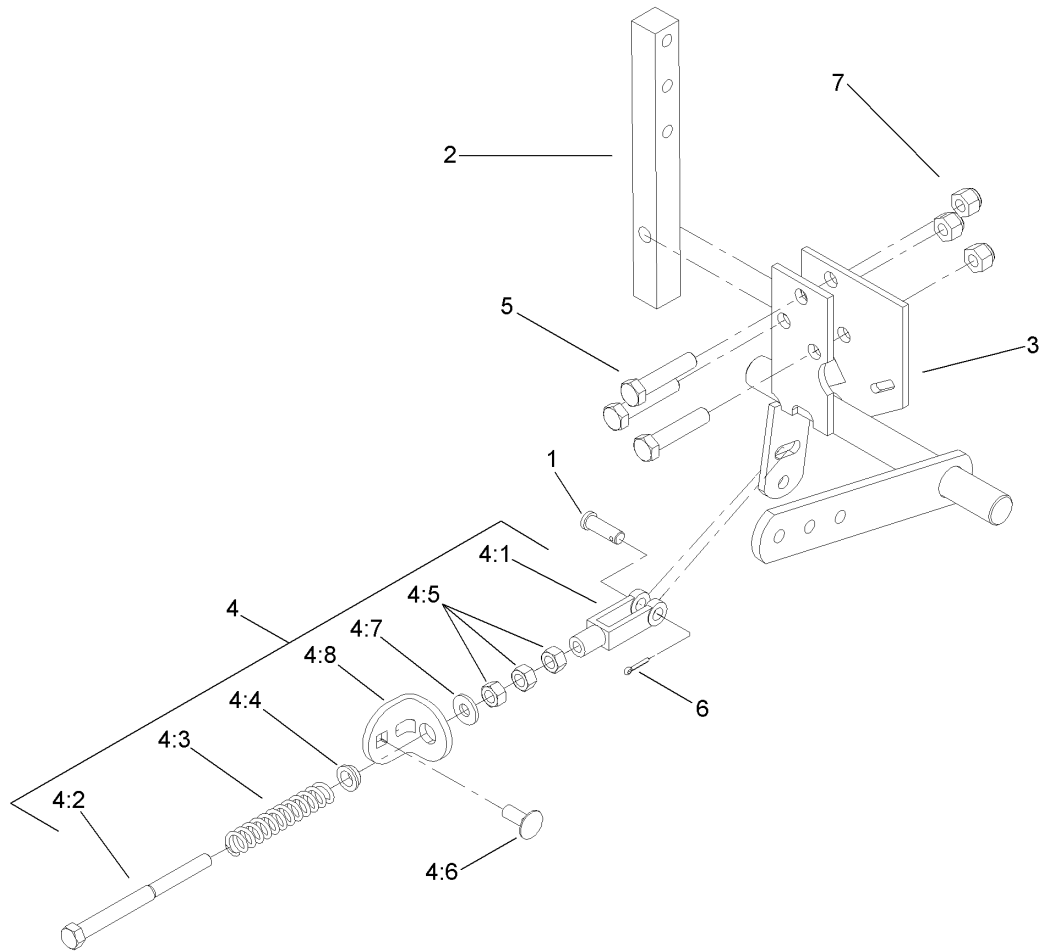
Ref	Part No.	Qty.	Description
19	103-2399	3	Pin-Spring, Clevis
20	325-17	8	Screw-HH
21	1481	2	Fitting-Grease
22	109-5618	8	Nut, Square Special
23	3219-3	4	Nut-Hex
24	3290-357	4	Nut-HHF, Whiz
26	3256-4	4	Washer-Flat
27	3272-10	2	Pin-Cotter
28	1-806800	2	Pin-Cotter
29	322-9	6	Screw-HH
30	103-0384	6	Spacer
31	103-0374	2	Retainer-Band, Brake
32	1-808285	1	Pin-Clevis



## Steering Control Assembly

Ref	Part No.	Qty.	Description
2	98-5975	4	Washer-Belleville
3	109-2339	2	Damper-Control, Motion
4	109-6058-03	1	Bracket-Mount, Damper
5	3230-16	2	Screw-CARR
8	1-403180	4	Screw-HH
9	103-4331	2	Tracking Rod ASM
9:1	1-543017	1	Balljoint-RH
9:2	3219-2	3	Nut-Hex
9:4	1-804524	1	Nut
9:5	1-633152	1	Balljoint-LH
10	103-0384	1	Spacer
11	108-7238	1	LH Lever ASM
11:1	106-9987	1	Grip-Control, Motion
12	1-632208	2	Arm-Control, Pump
16	1-633102	4	Bearing-Flange, Side
20	322-6	3	Screw-HH
21	323-4	8	Screw-HH
22	323-6	4	Screw-HH
24	1-803022	2	Screw-Set
30	3256-3	4	Washer-Flat
34	32128-20	6	Nut-HF
35	3290-357	8	Nut-HHF, Whiz
37	108-7237	1	RH Lever ASM
37:1	106-9987	1	Grip-Control, Motion

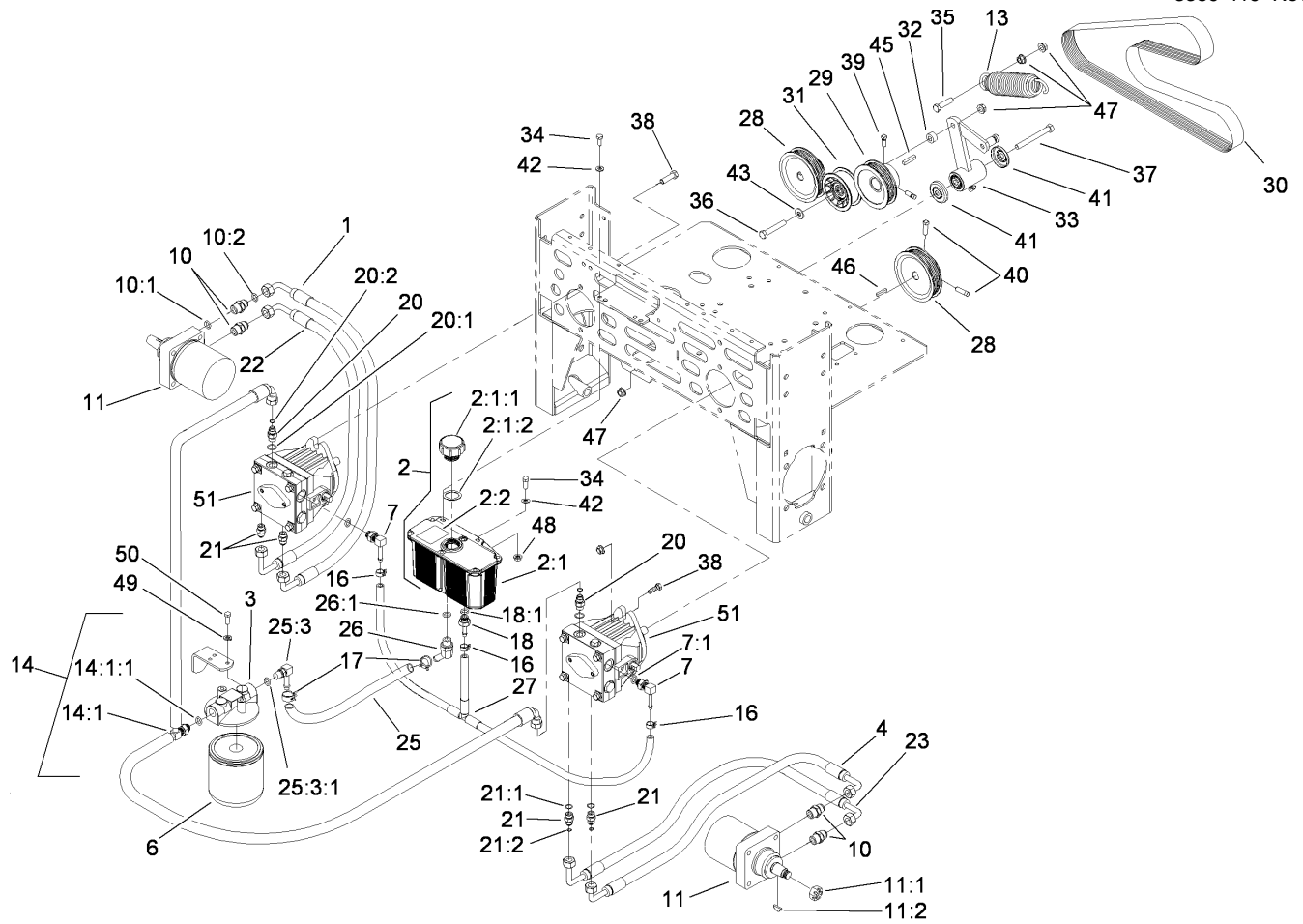
Ref	Part No.	Qty.	Description
38	3296-29	10	Nut-Lock, NI
39	3217-6	4	Nut-Hex
40	109-3906	1	LH Motion Control ASM
41	109-3907	1	RH Motion Control ASM
42	322-12	1	Screw-HH
43	105-7699	1	Strip-Seal



## LH Motion Control Assembly No. 109-3906

Ref	Part No.	Qty.	Description
1	1-808280	1	Pin-Clevis
2	103-0407	1	Arm-Shaft, Control
3	109-3902	1	Control-Motion, LH
4	109-3903	1	Neutral Return ASM
4:1	1-303105	1	Yoke-Adjustable
4:2	1-603737	1	Bolt-Return, Neutral
4:3	1-603807	1	Spring-Return, Neutral
4:4	109-3769	1	Bushing-Nylon, Flanged
4:5	3219-2	3	Nut-Hex
4:6	3230-23	1	Screw-CARR
4:7	3256-2	1	Washer-Flat
4:8	109-3908	1	Tab-Adjustment
5	323-9	3	Screw-HH
6	3272-5	1	Pin-Cotter
7	3296-39	3	Nut-Lock, NI



## Hydraulic Assembly

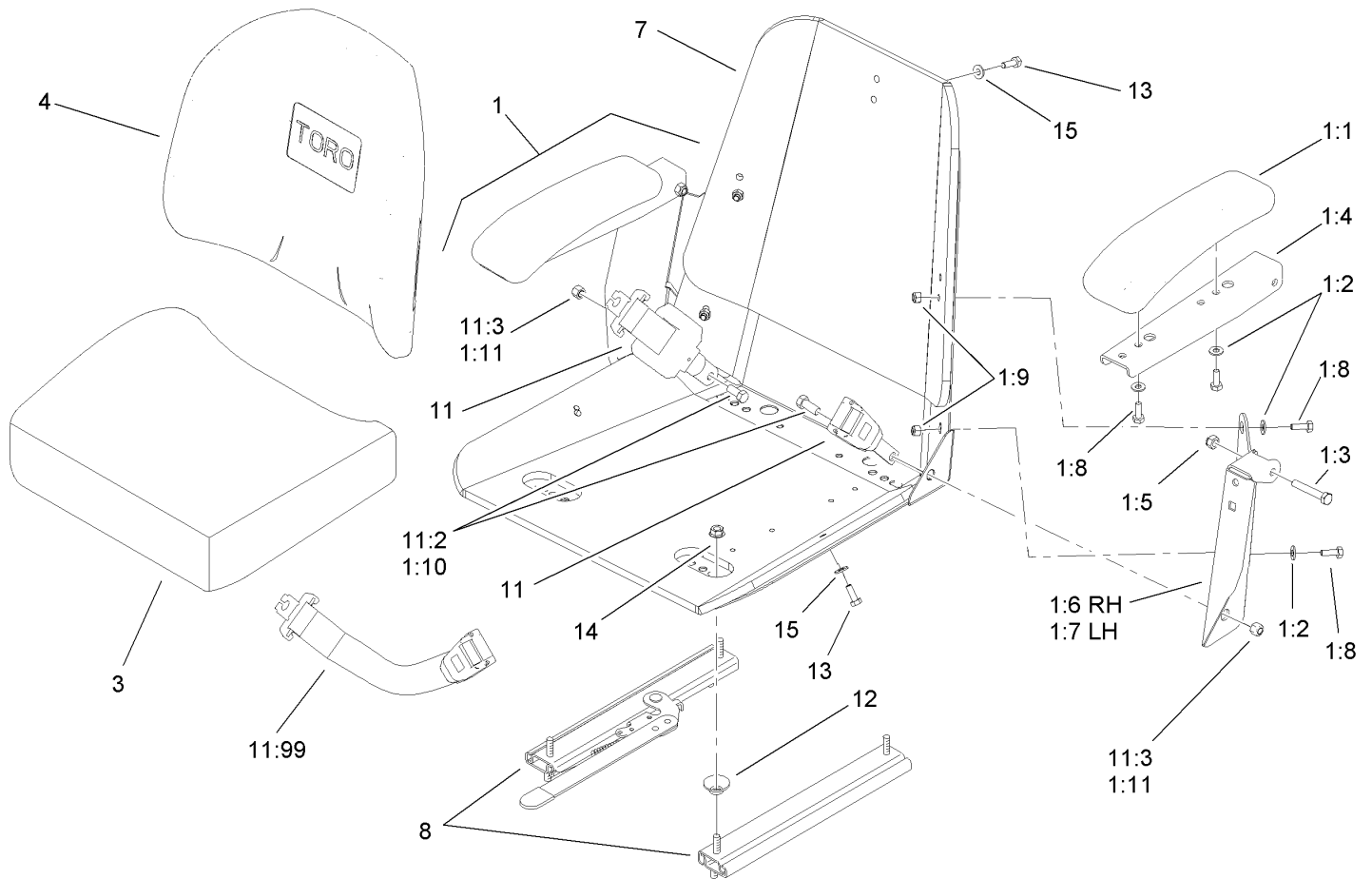
Ref	Part No.	Qty.	Description
1	103-3736	1	HYD Hose ASM
2	103-1947	1	HYD Reservoir ASM
2:1		1	Reservoir-HYD
2:1:1	103-1948	1	Cap-Reservoir, HYD
2:1:2	103-1949	1	Gasket-Cap
2:2	1-523552	1	Decal-Tank, HYD
3	104-7836	1	Head-Filter
4	103-3733	1	HYD Hose ASM
6	1-633750	1	Filter-Oil, HYD
6	1-633752	1	Filter-HYD, Winter
7	103-1799	2	Elbow-90 DEG
7:1	237-42	1	O-Ring
10	1-603991	4	Fitting-Straight
10:1	237-80	1	O-Ring
10:2	1-603992	1	O-Ring
11	1-523328	2	Motor-Wheel
11:1	1-809036	1	Nut-HH
11:2	3257-42	1	Key-Woodruff
11:99	103-2748	1	Drive Link Kit
11:99	1-000139	1	Bearing Kit
11:99	1-000099	1	Seal Kit
13	103-3330	1	Spring-Extension
14	109-6273	1	HYD Hose ASM
14:1		1	Adapter-Run, Tee

Ref	Part No.	Qty.	Description
14:1:1	237-42	1	O-Ring
16	103-1716	3	Clamp-Hose
17	103-1988	1	Clamp-Hose
18	103-1801	1	Adapter-Straight
18:1	237-42	1	O-Ring
20	103-2156	2	Fitting-Straight
20:1	1-603921	1	O-Ring
20:2	103-1020	1	O-Ring
21	1-603990	4	Fitting-Straight
21:1	1-603920	1	O-Ring
21:2	1-603992	1	O-Ring
22	103-3737	1	HYD Hose ASM
23	103-3735	1	HYD Hose ASM
25	109-7689	1	HYD Hose ASM
25:3		1	Fitting-Barb
25:3:1	237-42	1	O-Ring
26	103-1807	1	Elbow-45 DEG
26:1	237-42	1	O-Ring
27	103-1806	1	HYD Hose ASM
28	109-6046	2	Sheave
29	109-7738	1	Sheave
30	109-6112	1	Belt
31	109-4076	1	Pulley-Flat Idler
32	1-603050	1	Spacer



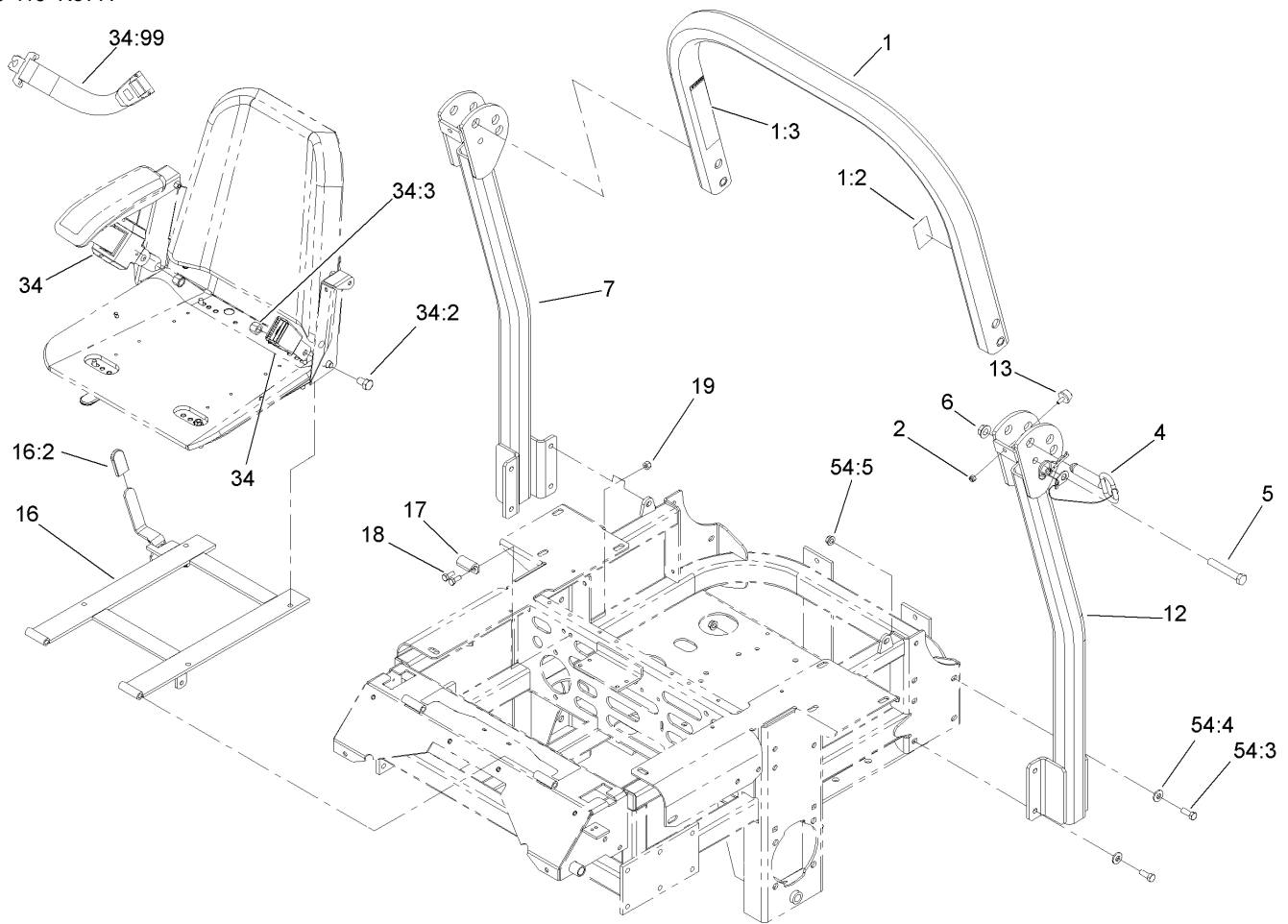






## Seat and Bracket Assembly No. 110-0446

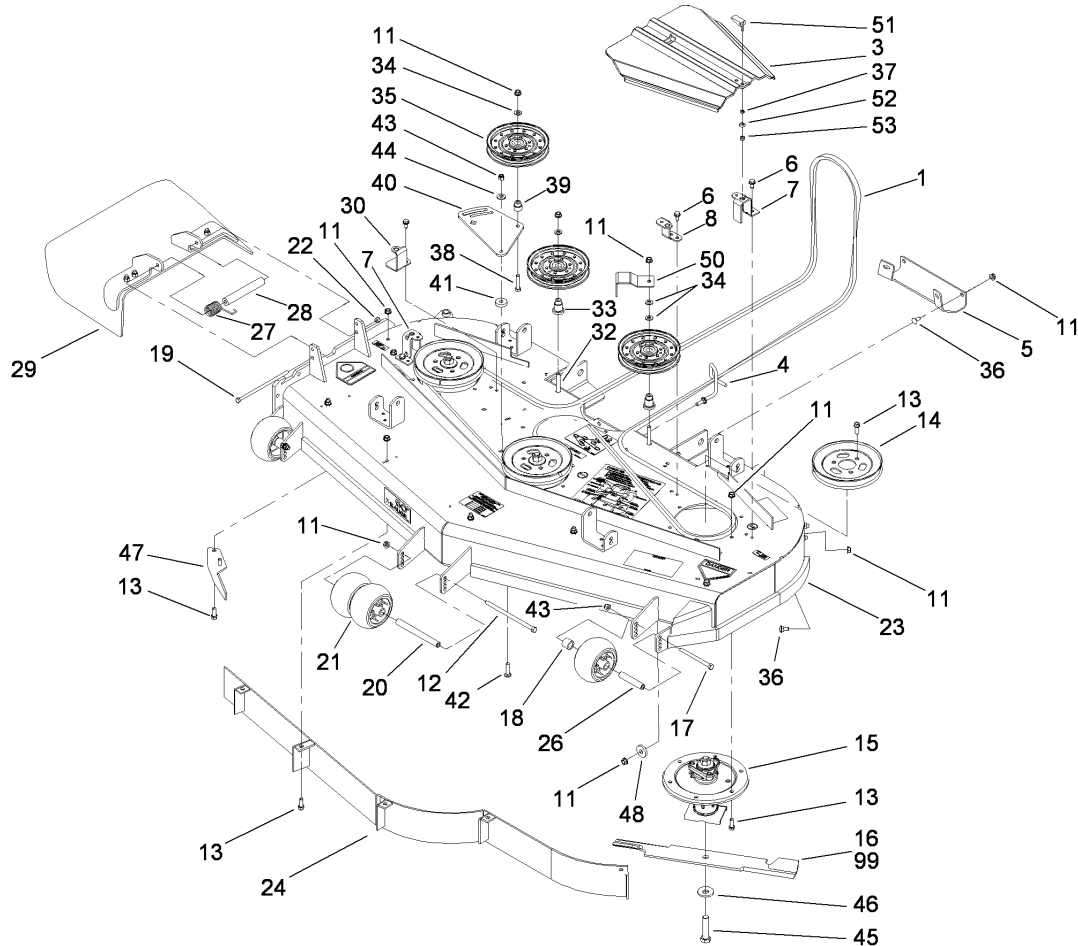
Ref	Part No.	Qty.	Description
1	110-5719	1	Armrest Kit
1:1	110-4163	2	Cushion-Rest, Arm
1:2	3256-22	4	Washer-Flat
1:3	322-10	2	Screw-HH
1:4	105-3623	2	Channel-Armrest
1:5	32153-3	2	Nut-Hex, Side Deform
1:6	105-3621	1	Bracket-Armrest, RH
1:7	105-3622	1	Bracket-Armrest, LH
1:8	321-30	8	Screw-HH
1:9	3296-42	4	Nut-Lock, NI
1:10	325-2	2	Screw-HH
1:11	3296-23	2	Nut-Lock, NI
3	110-4162	1	Cushion-Seat, Bottom
4	110-0447	1	Cusion-Seat, Back
7	1-633859	1	Frame-Seat
8	1-643255	1	Track-Seat
11	110-0883	1	Retractable Seatbelt Kit
11:2	3212-4	2	Screw-HH
11:3	3296-7	2	Nut-Lock
11:99	109-6226	1	Seat Belt Extension Kit
12	1-543401	4	Spacer-Track
13	321-30	5	Screw-HH
14	32128-20	4	Nut-HF
15	3256-22	5	Washer-Flat

## Roll-Over Protection System Assembly No. 108-1097

Ref	Part No.	Qty.	Description
①		1	Upper Tube ASM
1:2	107-2101	1	Decal-ROPS
1:3	107-2102	1	Decal-Warning, Folding ROPS
2	3296-73	2	Nut-Lock, NI
4	103-4553	2	ROPS Fold Pin ASM
5	325-13	2	Screw-HH
6	32128-23	2	Nut-HF
②		1	Tube-Support, RH
②		1	Tube-Support, LH
13	109-2365	2	Bumper-Rubber (W/Stud)
16	110-5850	1	Seat Frame And Latch ASM
16:2	103-4434	1	Grip-Lever
17	107-3058	1	Catch-Latch, Seat
18	322-3	2	Screw-HH
19	3296-29	2	Nut-Lock, NI
34	110-0883	1	Retractable Seatbelt Kit
34:2	3212-4	2	Screw-HH
34:3	3296-7	2	Nut-Lock
34:99	109-6226	1	Seat Belt Extension Kit
①	②	1	Bag-Bolt, ROPS
54:3	323-6	8	Screw-HH
54:4	98-5975	8	Washer-Belleville
54:5	3290-357	8	Nut-HHF, Whiz





## Deck Assembly

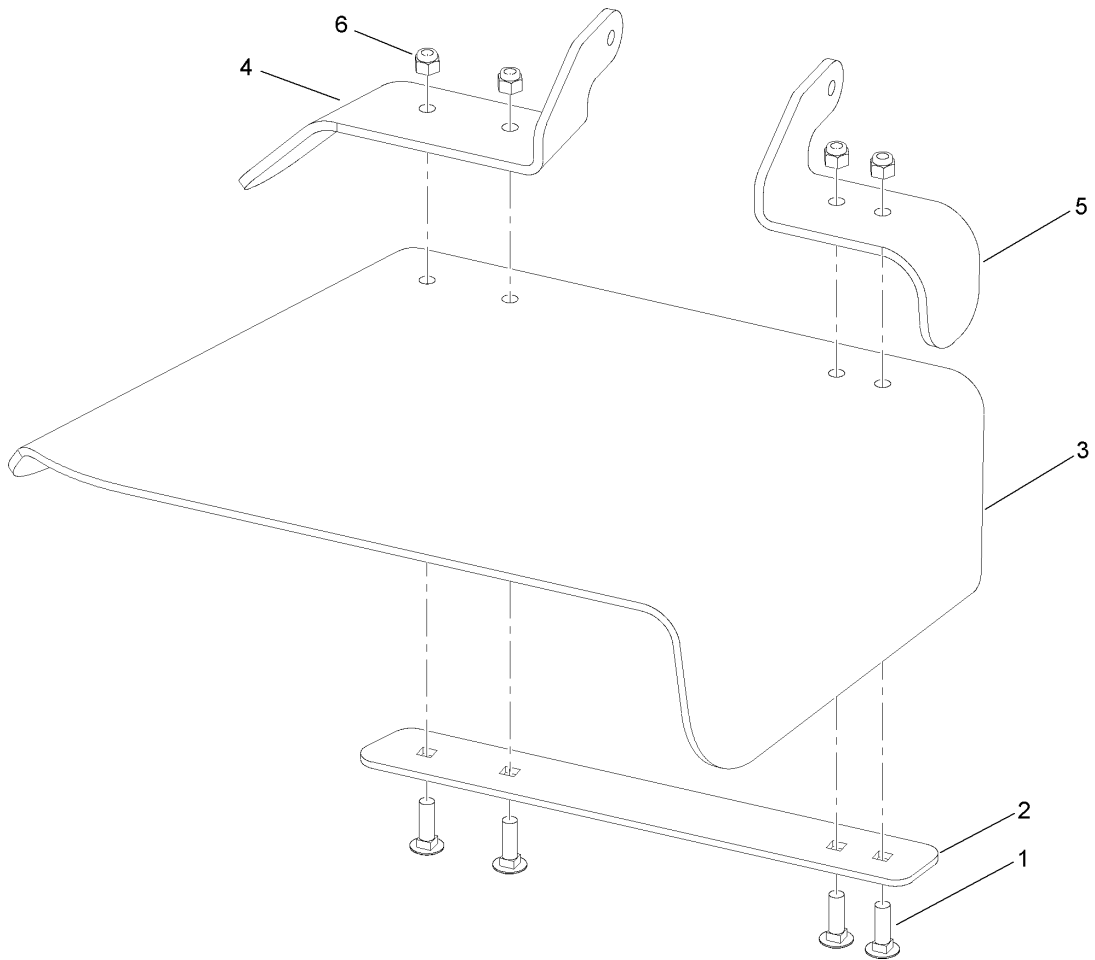
Ref	Part No.	Qty.	Description
1	105-8783	1	Belt
3	107-8536	2	Cover-Belt
4	106-3220	1	Guide-Belt
5	105-8792-01	1	Plate-Skid
6	32144-70	4	Screw-HWHTF
7	108-4121-01	2	Bracket-Cover
8	108-2177-01	1	Bracket-Cover, Tall
11	3290-357	37	Nut-HHF, Whiz
12	323-28	1	Screw-HH
13	92-1624	33	Screw
14	105-7734	3	Pulley
15	107-8504	3	Spindle ASM
16	105-7718-03	3	Blade-Hi Flow
17	323-23	2	Screw-HH
18	98-7913	2	Tube-Spacer
19	322-50	1	Screw-HH
20	98-5967	1	Spacer-Wheel
21	1-603299	4	Roller-Scalp, Anti
22	3296-29	1	Nut-Lock, NI
23	115-2781	1	Deck ASM
24	110-5564-01	1	Baffle ASM
26	98-7912	2	Tube-Spacer
27	108-4052	1	Spring-Torsion
28	105-4622	1	Spacer

Ref	Part No.	Qty.	Description
29	108-7770	1	Rubber Deflector ASM
30	108-4122-01	1	Bracket-Cover
32	3231-31	2	Screw-CARR
33	106-3214	2	Mount-Pulley
34	3256-24	4	Washer-Flat
35	1-633109	3	Idler-Flat
36	3231-1	10	Screw-CARR
37	99-3058	4	Washer
38	323-9	1	Screw-HH
39	1-603496	1	Bushing-Idler
40	105-7787-01	1	Plate-Idler
41	105-7788	2	Spacer
42	3231-4	2	Screw-CARR
43	3296-39	6	Nut-Lock, NI
44	98-5975	1	Washer-Belleveille
45	103-0862	3	Screw-Cap
46	103-0865	3	Washer-Blade Bolt, Heavy
47	106-3216-01	1	Baffle-Discharge
48	112843	1	Washer
50	108-7220-01	1	Guide-Belt
51	106-6777	2	Handle-Latch, Swell
52	106-6778	2	Bushing-Latch, Swell
53	1-804254	2	Nut
99	105-8777-03	3	Blade-Atomic, 20.5 Inch



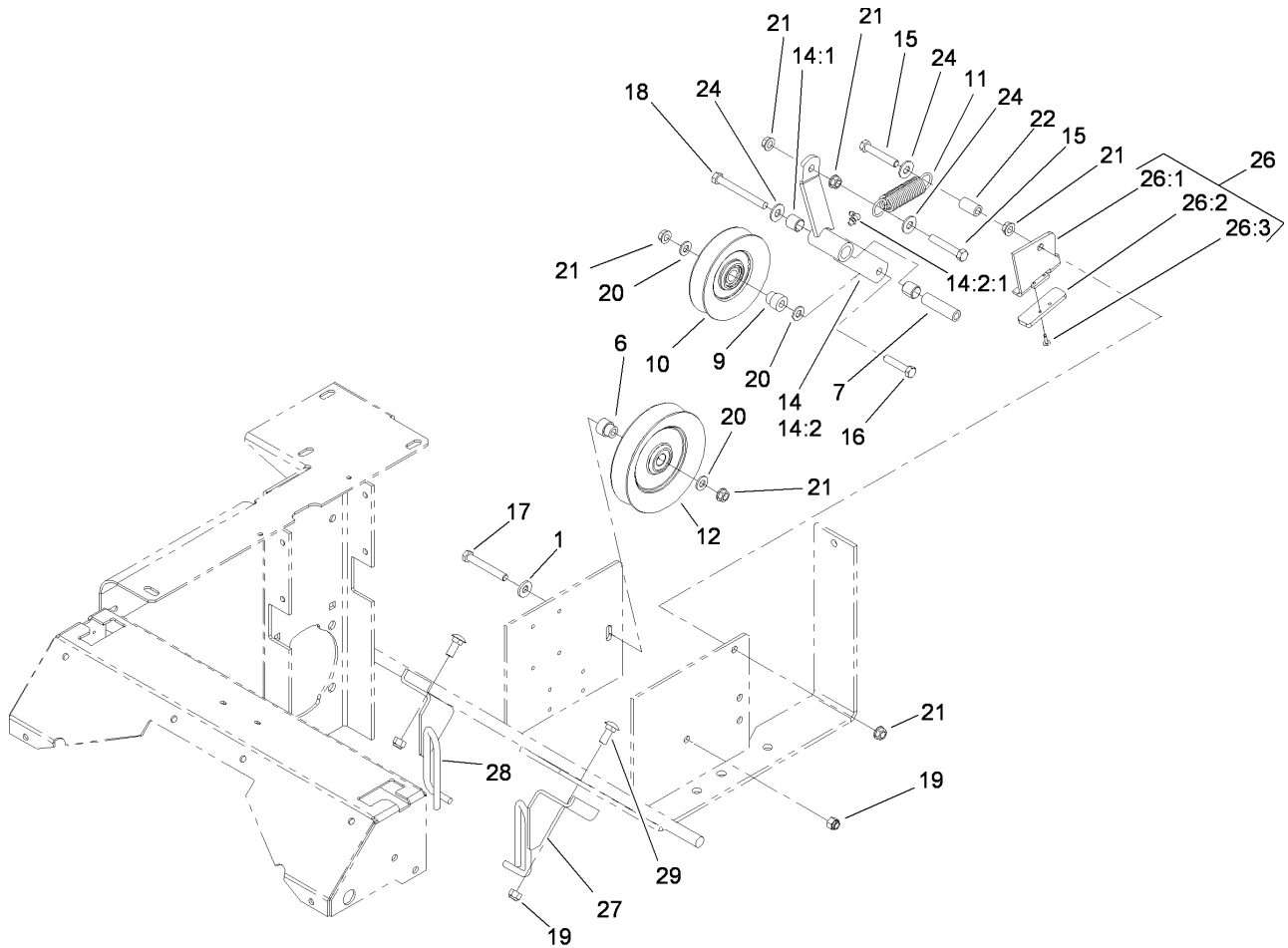






### Rubber Deflector Assembly No. 108-7770

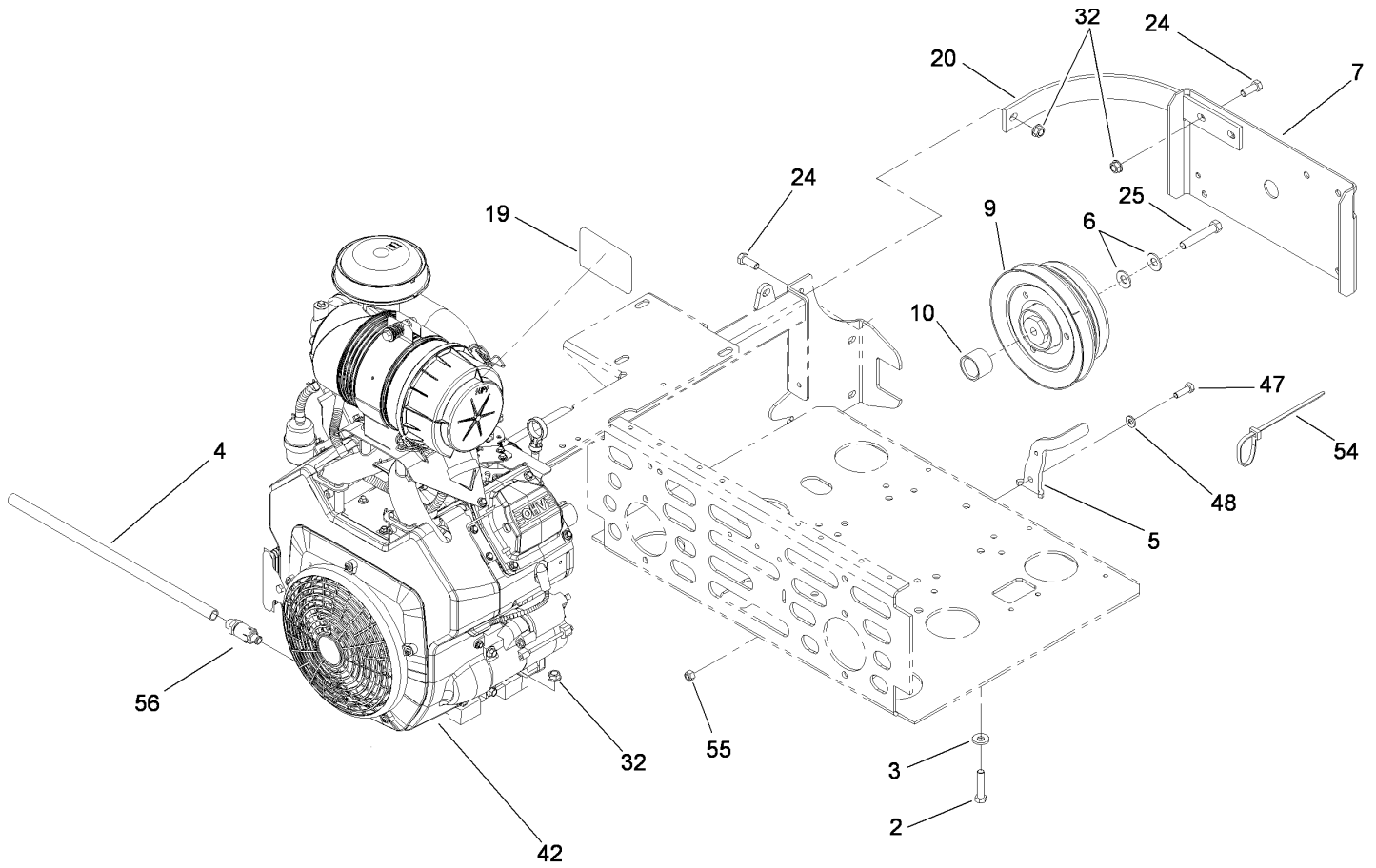
Ref	Part No.	Qty.	Description
1	3231-25	4	Screw-CARR
2	106-3248-03	1	Strap-Discharge
3	108-5029	1	Deflector-Rubber
4	108-7767-03	1	Bracket-Hinge, Rear
5	108-7766-03	1	Bracket-Hinge, Front
6	3296-39	4	Nut-Lock, NI



### Drive Idler Assembly

Ref	Part No.	Qty.	Description
1	98-5975	1	Washer-Belleville
6	103-2627	1	Bushing-Idler
7	1-603384	1	Bushing-Pivot, Idler
9	1-603496	1	Bushing-Idler
10	99-4638	1	Idler
11	1-603402	1	Spring-Extension
12	1-633166	1	Pulley-Idler
14	103-3147	1	Arm ASM
14:1	1-513034	2	Sleeve-Bearing
14:2		1	Arm-Idler
14:2:1	302-40	1	Fitting-Grease
15	323-12	2	Screw-HH
16	323-9	1	Screw-HH
17	323-13	1	Screw-HH
18	1-800805	1	Screw-HH
19	3296-39	3	Nut-Lock, NI
20	3256-24	3	Washer-Flat
21	3290-357	6	Nut-HHF, Whiz
22	1-603401	1	Spacer-Fender
24	3256-4	3	Washer-Flat
26	106-3271	1	Travel Limiter ASM
26:1	106-3228-03	1	Plate-Limiter, Pulley
26:2	106-3229	1	Pad-Bumper
26:3	3269-24	2	Rivet

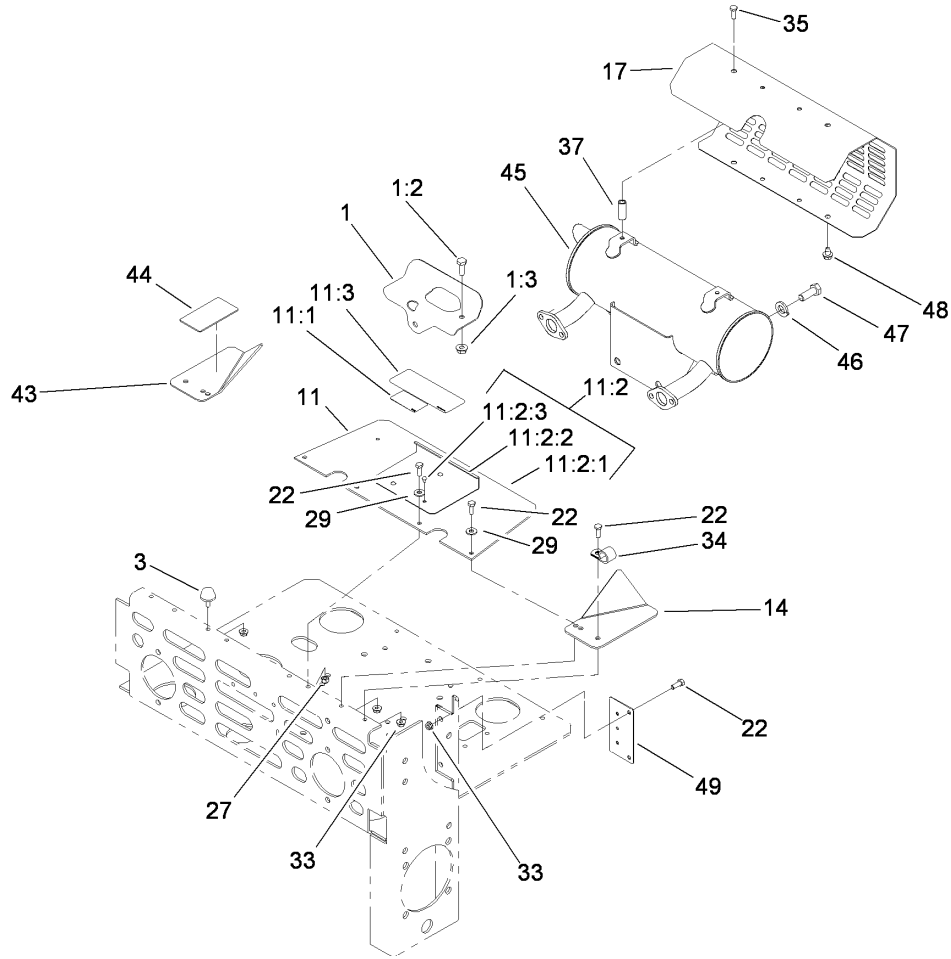
Ref	Part No.	Qty.	Description
27	108-7204-03	1	Guide-Belt, LH
28	108-7229-03	1	Guide-Belt, RH
29	3231-2	2	Screw-CARR



## Engine and Clutch Assembly

Ref	Part No.	Qty.	Description
2	323-9	4	Screw-HH
3	98-5975	4	Washer-Belleville
4	106-7022	1	Tube-Drain, Oil
5	109-7083-03	1	Anchor-Clutch
6	1-603610	2	Washer-Spring
7	1-633615-03	1	Guard-Clutch
9	103-6579	1	Clutch
10	1-633179	1	Spacer-Clutch
19	103-3270	1	Decal
20	103-7454-03	2	Strap-Guard
24	323-6	6	Screw-HH
25	3212-10	1	Screw-HH
32	3290-357	8	Nut-HHF, Whiz
② ④ 42		1	Engine-Kohler, Ch740-0075
47	322-5	1	Screw-HH
48	1-303334	1	Washer-Spring
54	1-303335	1	Tie-Plastic
55	3296-29	1	Nut-Lock, NI
56	92-6877	1	Valve-Drain, Oil

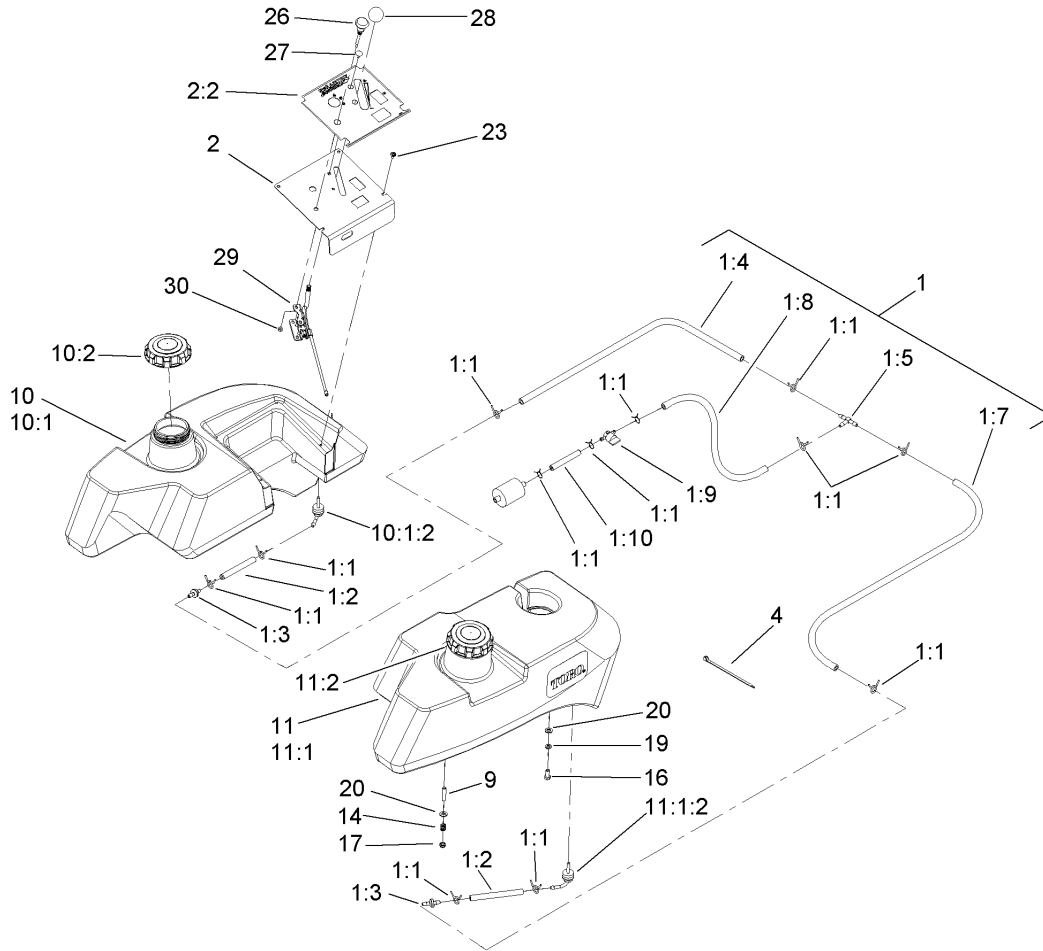
Ref	Part No.	Qty.	Description



## Muffler and Guard Assembly

Ref	Part No.	Qty.	Description
1	103-3535	1	Cable Heat Shield Kit
1:2	321-4	1	Screw-HH
1:3	32128-33	1	Nut-HF
3	109-2365	2	Bumper-Rubber (W/Stud)
11	1-644276	1	Shield ASM
11:1	1-633462	1	Decal-Important
11:2	1-634308	1	Shield And Lift ASM
11:2:1	103-1308	1	Shield-Engine
11:2:2	1-633300-03	1	Lift-Shield
11:2:3	1-803035	3	Rivet-Pop
11:3	103-5881	1	Decal-Devices, Rotating
14	103-6620-03	1	Support-Front Cover, LH
17	1-643313-03	1	Guard-Muffler
22	321-4	10	Screw-HH
27	3296-42	4	Nut-Lock, NI
29	3256-2	4	Washer-Flat
33	32128-33	8	Nut-HF
34	1-633396	1	Clip-Loom
35	1-809108	2	Screw-HWH
37	1-323236	2	Spacer
43	103-6619-03	1	Support-Front Cover, RH
44	1-643339	1	Decal-Routing, Belt
45	103-7482	1	Muffler
46	3253-6	2	Washer-Lock

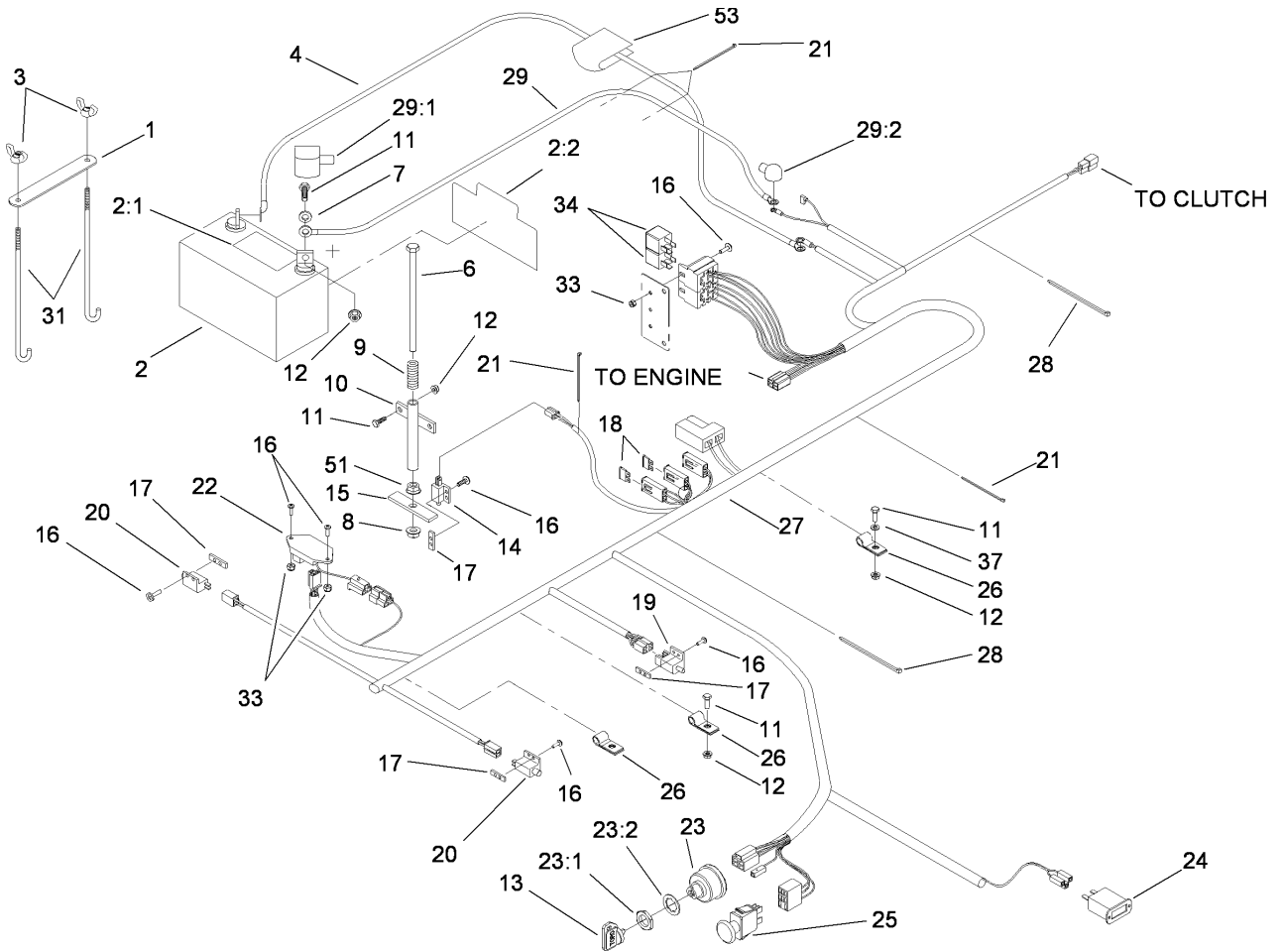
Ref	Part No.	Qty.	Description
47	324-2	2	Screw-HH
48	9266934	2	Screw
49	109-7679-03	1	Mount-Relay



## Fuel System Assembly

Ref	Part No.	Qty.	Description
1	107-9285	1	Fuel Line ASM
1:1	1-303077	12	Clamp
1:2	109-0678	2	Hose-Fuel
1:3	99-5000	2	Valve-Check, Fuel
1:4	109-0305	1	Hose-Fuel
1:5	99-5005	1	Fitting-Tee, Barbed
1:7	109-0302	1	Hose-Fuel
1:8	109-0299	1	Hose-Fuel
1:9	1-603770	1	Valve-Fuel
1:10	110-5701	1	Hose-Fuel
2	110-5732	1	Control Panel ASM
2:2	110-5731	1	Decal-Panel, Control
4	1-303335	4	Tie-Plastic
9	1-633023	6	Stud
10	105-3644	1	LH Fuel Tank Kit ASM
⑩10:1		1	LH Fuel Tank ASM
10:1:2	103-2605	1	Fitting-Fuel, Bulkhead
10:2	109-0346	1	Cap-Fuel, Gas
11	105-3643	1	RH Fuel Tank Kit ASM
⑩11:1		1	RH Fuel Tank ASM
11:1:2	103-2605	1	Fitting-Fuel, Bulkhead
11:2	109-0346	1	Cap-Fuel, Gas
14	1-633349	6	Spring-Tank, Fuel
16	322-3	2	Screw-HH

Ref	Part No.	Qty.	Description
17	3296-47	6	Nut-Lock, NI
19	1-805005	2	Washer-Lock
20	3256-23	8	Washer-Flat
23	109-2661	4	Screw-PPH
26	106-9962	1	Control-Choke, Push / Pull
27	1-807513	2	Bolt-CARR
28	1-513592	1	Knob-Ball
29	107-8073	1	Cable-Throttle
30	3296-2	2	Nut-Lock

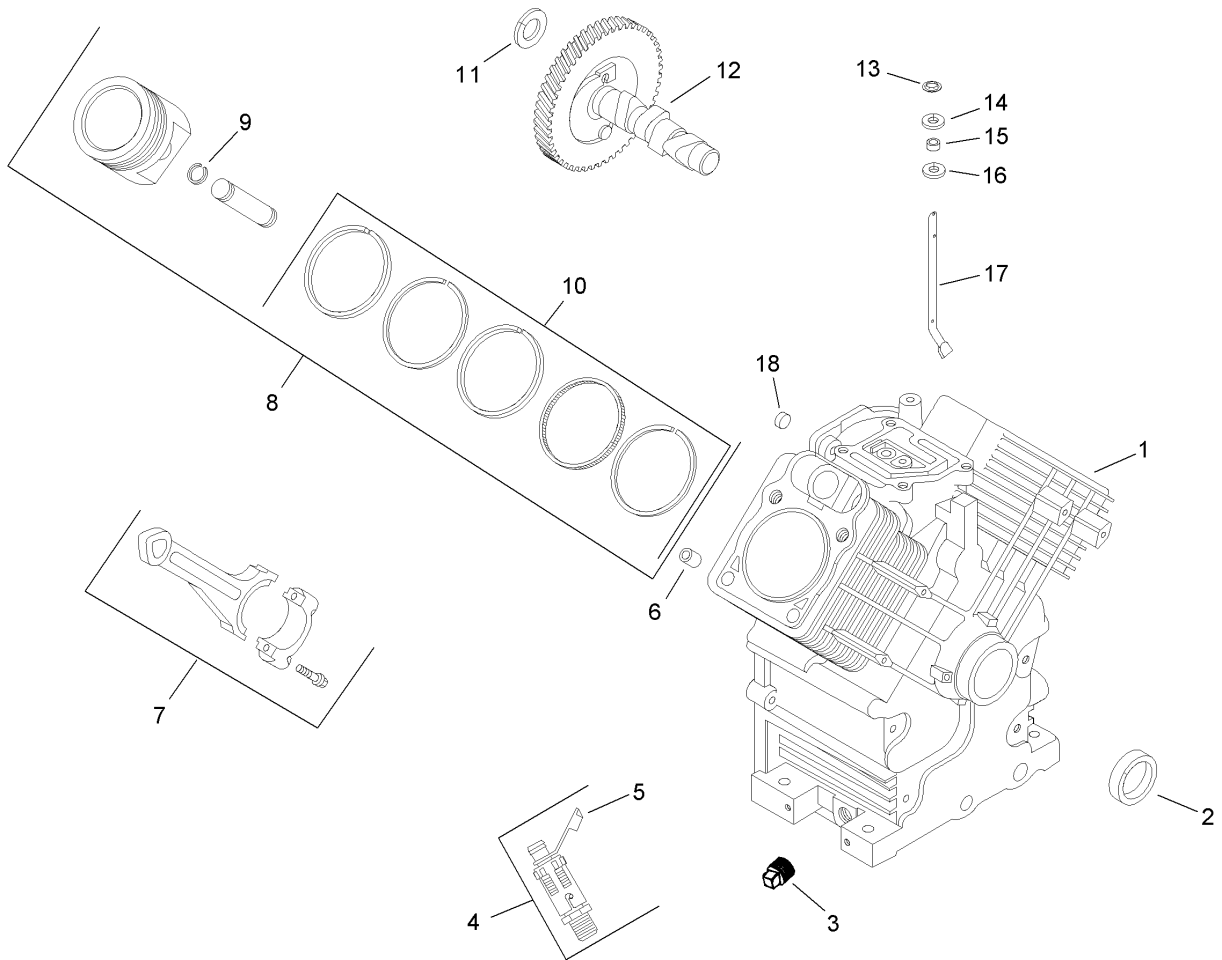


## Electrical Assembly

Ref	Part No.	Qty.	Description
1	107-9277-03	1	Strap-Holddown, Battery
2	105-1692	1	Battery
2:1	104-4163	1	Decal-Battery
2:2	104-4164	1	Decal-Battery
3	1-543792	2	Wingnut
4	1-633307	1	Wire-Ground
6	1-800282	1	Screw-HH
7	3256-2	2	Washer-Flat
8	3296-29	1	Nut-Lock, NI
9	1-523415	1	Spring-Switch, Seat
10	1-522424-03	1	Mount-Spring, Seat
11	321-4	6	Screw-HH
12	32128-33	6	Nut-HF
13	63-8360	2	Key-Ignition
14	1-513152	1	Switch-Closed, Normally
15	1-513180	1	Plate-Switch, Seat
16	3290-500	12	Screw-PPH
17	1-633181	4	Plate-Tapped
18	1-816001	2	Fuse-Blade Type, 20 Amp
19	1-633111	1	Switch
20	1-513051	2	Switch-Open, Normally
21	1-303287	5	Tie-Plastic
22	100-6186	1	Module-Delay, Seat
23	104-2541	1	Switch ASM

Ref	Part No.	Qty.	Description
23:1	218-461	1	Nut-HH
23:2	3254-5	1	Washer-Tooth
24	1-513374	1	Meter-Hour
25	103-5221	1	Switch-PTO
26	1-633396	3	Clip-Loom
27	106-7497	1	Harness-Wire
28	1-303335	2	Tie-Plastic
29	109-7630	1	Positive Battery Cable ASM
29:1	109-2407	1	Insulator-Battery
29:2	1-543393	1	Insulator-Solenoid
31	1-633651	2	Bolt-Holddown
33	3296-2	4	Nut-Lock
34	1-643275	2	Relay
37	3256-22	1	Washer-Flat
51	3217-6	1	Nut-Hex
53	107-9309	1	Decal-Instructions, Charging

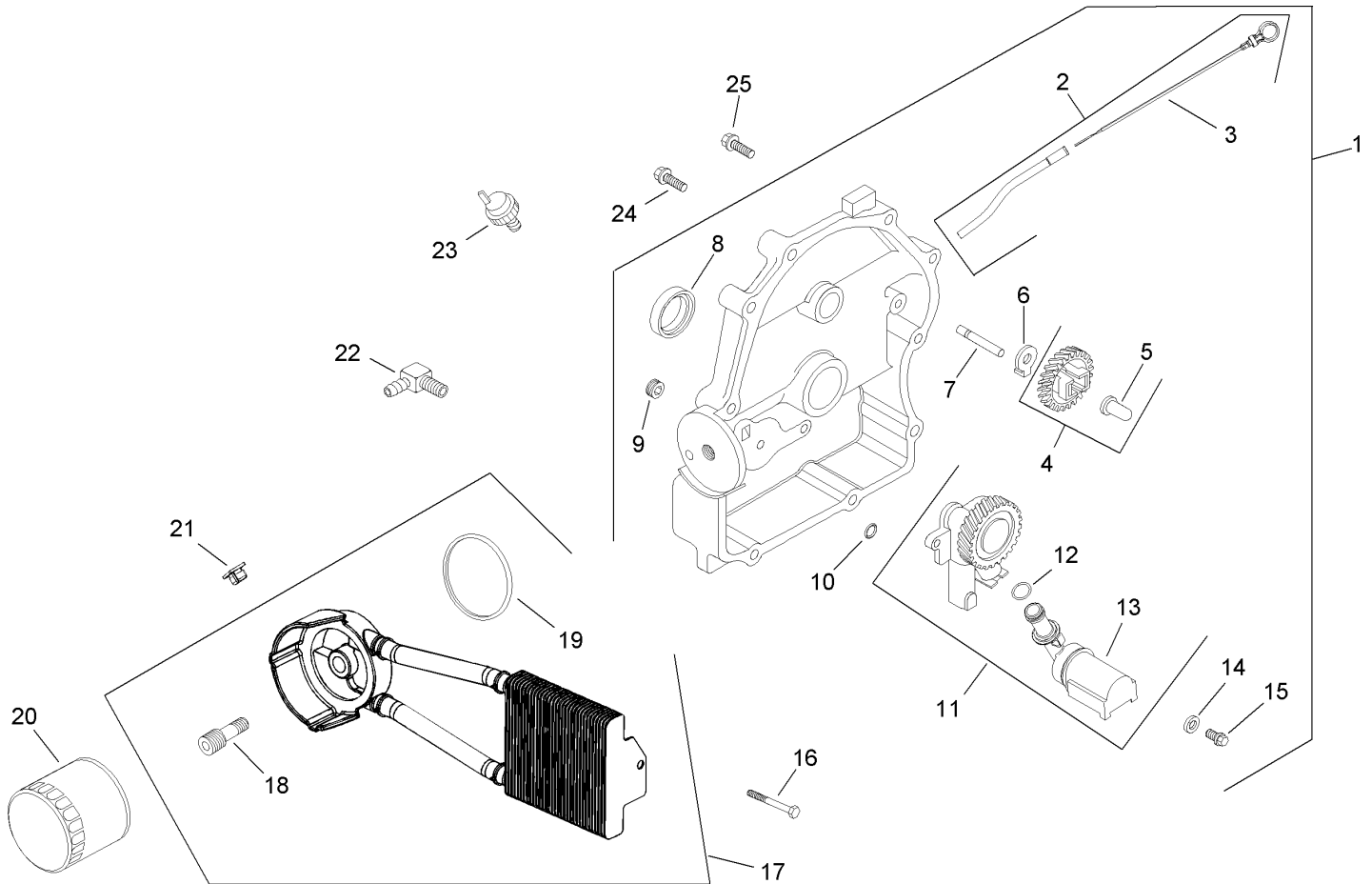




## Crankcase Assembly Kohler CH740 0075

Ref	Part No.	Qty.	Description
2 41		1	Crankcase (Use: Miniblock 24 782 36)
42	24 032 01-S	1	Seal-Oil
43	25 139 57-S	2	Plug-Solid, Square Head (.38)
44	25 755 14-S	1	Oil Drain Valve ASM
45	25 173 14-S	1	Cap-Valve, Oil Drain
46	24 380 16-S	6	Pin-Locating
47	24 067 20-S	2	Rod-Connecting (STD)
47	24 067 14-S	2	Rod-Connecting (.25)
48	24 874 08-S	2	Piston W/Ring Set (STD)
48	24 874 16-S	2	Piston And Ring Set (.08)
48	24 874 20-S	2	Piston And Ring Set (.25)
48	24 874 21-S	2	Piston W/Ring Set (.50)
49	24 018 01-S	4	Retainer-Pin, Piston
410	24 108 05-S	2	Ring Set (.25)
410	24 108 06-S	2	Ring Set (.25)
410	24 108 07-S	2	Ring Set (.50)
411	12 422 10-S	1	Shim-Camshaft (Yellow .034)
411	12 422 09-S	1	Shim-Camshaft (Red .032)
411	12 422 13-S	1	Shim-Camshaft (Black .04)
411	12 422 07-S	1	Shim-Camshaft (White .028)
411	12 422 08-S	1	Shim-Camshaft (Blue .03)
411	12 422 11-S	1	Shim-Camshaft (Green .036)
411	12 422 12-S	1	Shim-Camshaft (Gray .038)

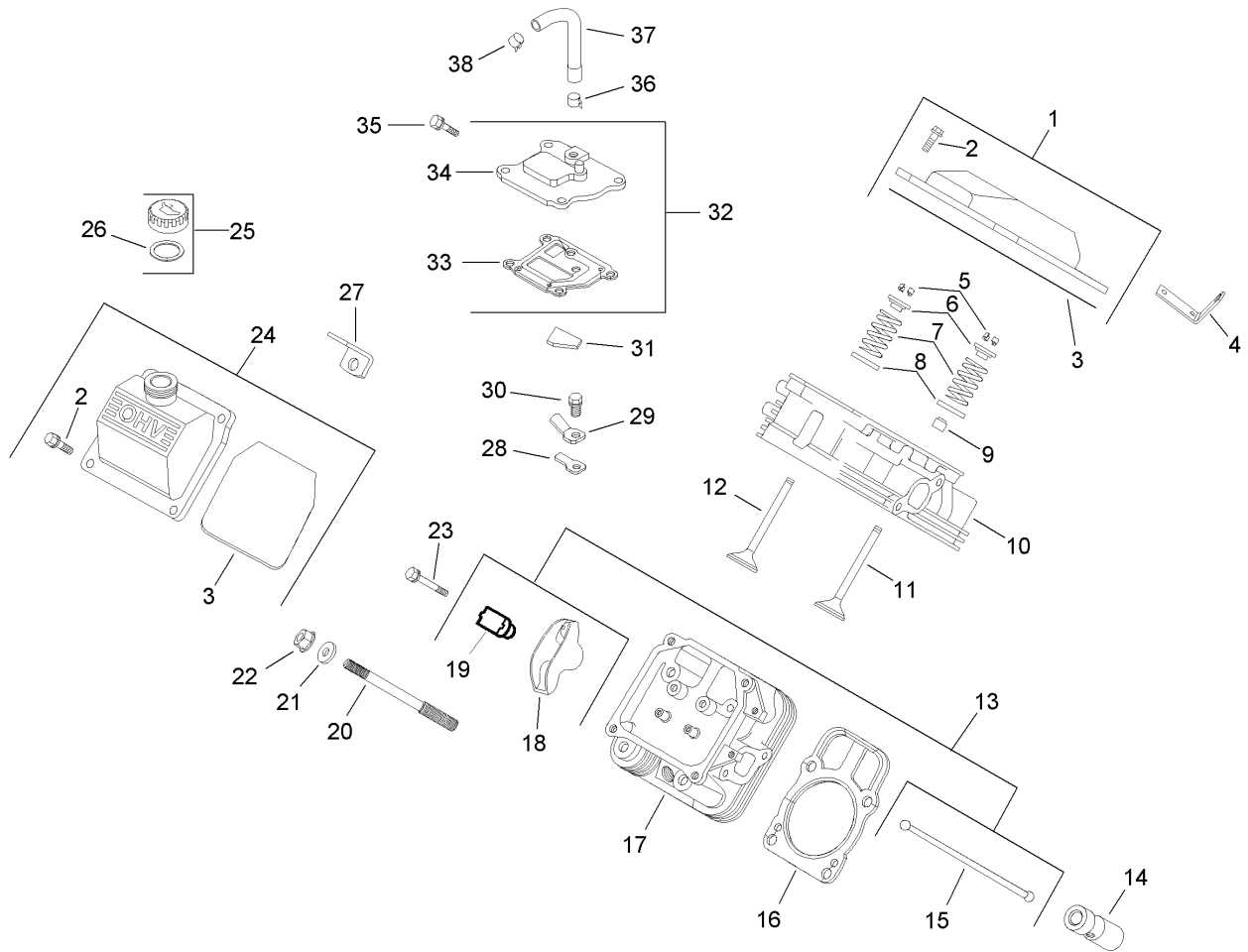
Ref	Part No.	Qty.	Description
412	24 012 18-S	1	Camshaft
413	24 018 09-S	1	Ring-Retainer
414	M-931010-S	1	Washer-Flat (8 Mm)
415	28 032 09-S	1	Seal-Shaft, Cross Governor
416	24 468 15-S	1	Washer-Flat (.34)
417	24 144 38-S	1	Shaft-Cross, Governor
418	52 139 09-S	1	Plug-Cup



## Oil Pan / Lubrication Assembly Kohler CH740 0075

Ref	Part No.	Qty.	Description
④1	24 009 83-S	1	Closure Plate ASM
④2	24 755 121-S	1	Dipstick Tube ASM
④3	24 038 10-S	1	Dipstick
④4	24 043 12-S	1	Governor Gear Kit
④5	12 380 01-S	1	Pin-Regulating, Governor
④6	24 448 02-S	1	Tab-Locking
④7	12 144 02-S	1	Shaft-Gear, Governor
④8	52 032 08-S	1	Seal-Oil
④9	25 139 60-S	1	Plug-Hex, Countersunk (.125)
④10	24 153 08-S	1	O-Ring
④11	24 393 51-S	1	Oil Pump ASM
④12	24 153 01-S	1	O-Ring
④13	24 381 04-S	1	Pick Up-Oil
④14	M-631005-S	2	Washer-Plain (6 Mm)
④15	M-645025-S	2	Screw-HF (M6X1.0X25)
④16	25 086 49-S	2	Screw-Tapping (1/4-1X3/4)
④17	54 755 21-S	1	Oil Cooler Kit
④18	24 136 05-S	1	Nipple-Filter, Oil
④19	24 153 21-S	1	O-Ring
④20	12 050 01-S	1	Filter-Oil
④21	24 100 01-S	2	Nut-Plastic
④22	25 155 02-S	1	Connector-Hose, 90 DEG
④23	24 099 03-S	1	Switch-Pressure
④24	24 086 16-S	9	Screw-HF (M8X1.25X45)

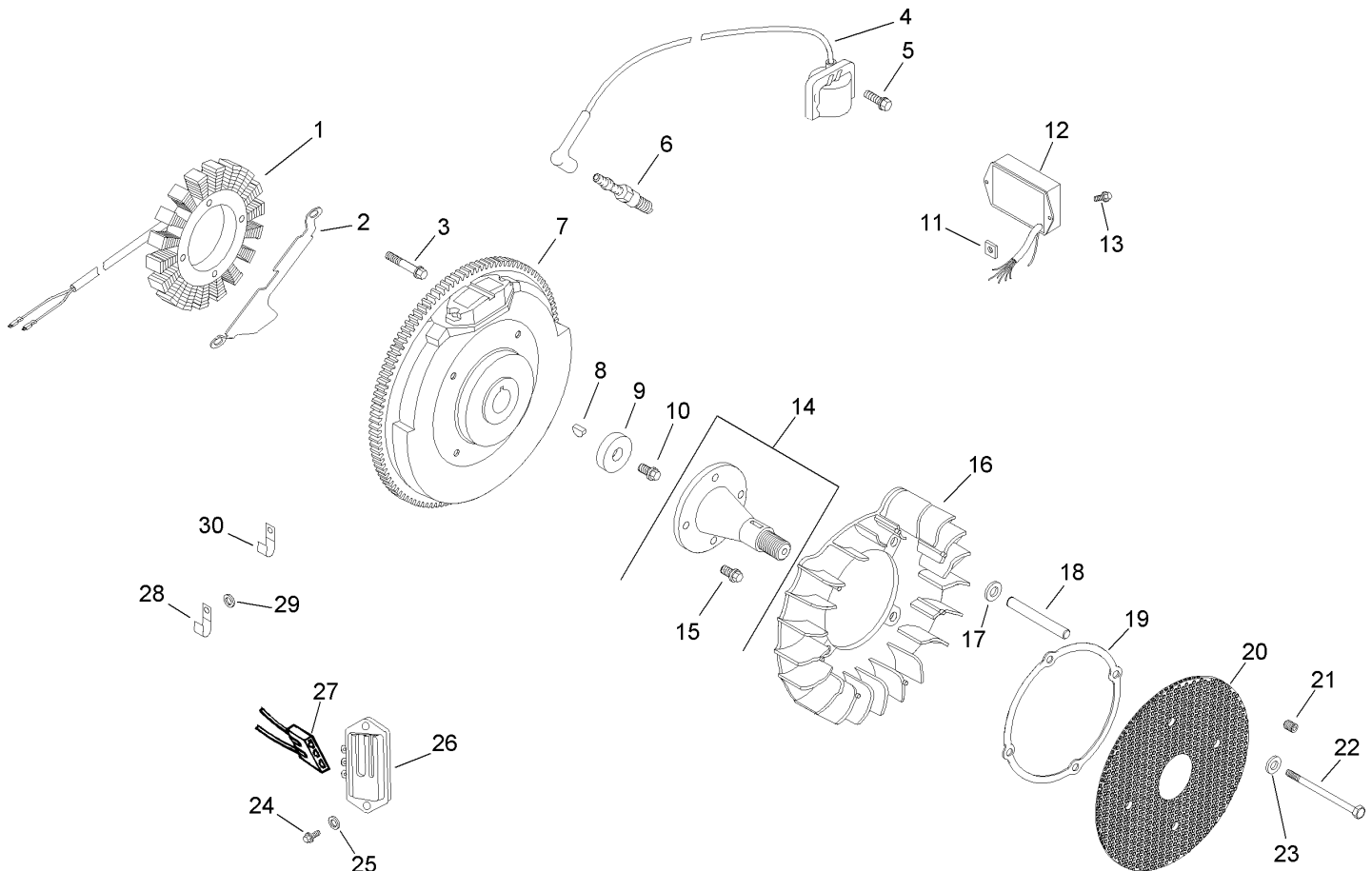
Ref	Part No.	Qty.	Description
④25	24 086 17-S	1	Screw-HF (M8X1.25X45)



## Head / Valve / Breather Assembly Kohler CH740 0075

Ref	Part No.	Qty.	Description
1	24 755 141-S	1	Plain Valve Cover ASM
2	M-651030-S	4	Screw-Hex Flange (M6X1.0X30)
3	24 153 28-S	1	O-Ring
4	24 445 01-S	1	Strap-Lifting
5	12 755 03-S	4	Retainer Kit
6	12 173 01-S	2	Cap-Spring, Valve
7	24 089 02-S	2	Spring-Valve
8	235011-S	2	Retainer-Spring
9	66 032 05-S	1	Seal-Stem, Valve
10	24 318 65-S	1	Cylinder Head ASM
11	24 017 01-S	1	Valve-Intake (Standard)
11	24 017 02-S	1	Valve-Intake (.25)
12	24 016 01-S	2	Valve-Exhaust (Standard)
12	24 016 02-S	1	Valve-Exhaust (.25)
13	24 755 66-S	1	Valve Train Kit
14	25 351 04-S	4	Lifter-Valve
15	24 411 05-S	2	Rod-Push
16	24 841 03-S	2	Cylinder Head Gasket Kit
17	24 318 66-S	1	Cylinder Head ASM
18	25 186 01-S	2	Arm-Rocker
19	24 599 02-S	2	Arm-Rocker, Pivot
20	24 072 09-S	8	Stud (M8X1.25, M10X1.5, 105 Mm)
21	24 468 16-S	8	Washer-Flat (8.6 Mm)

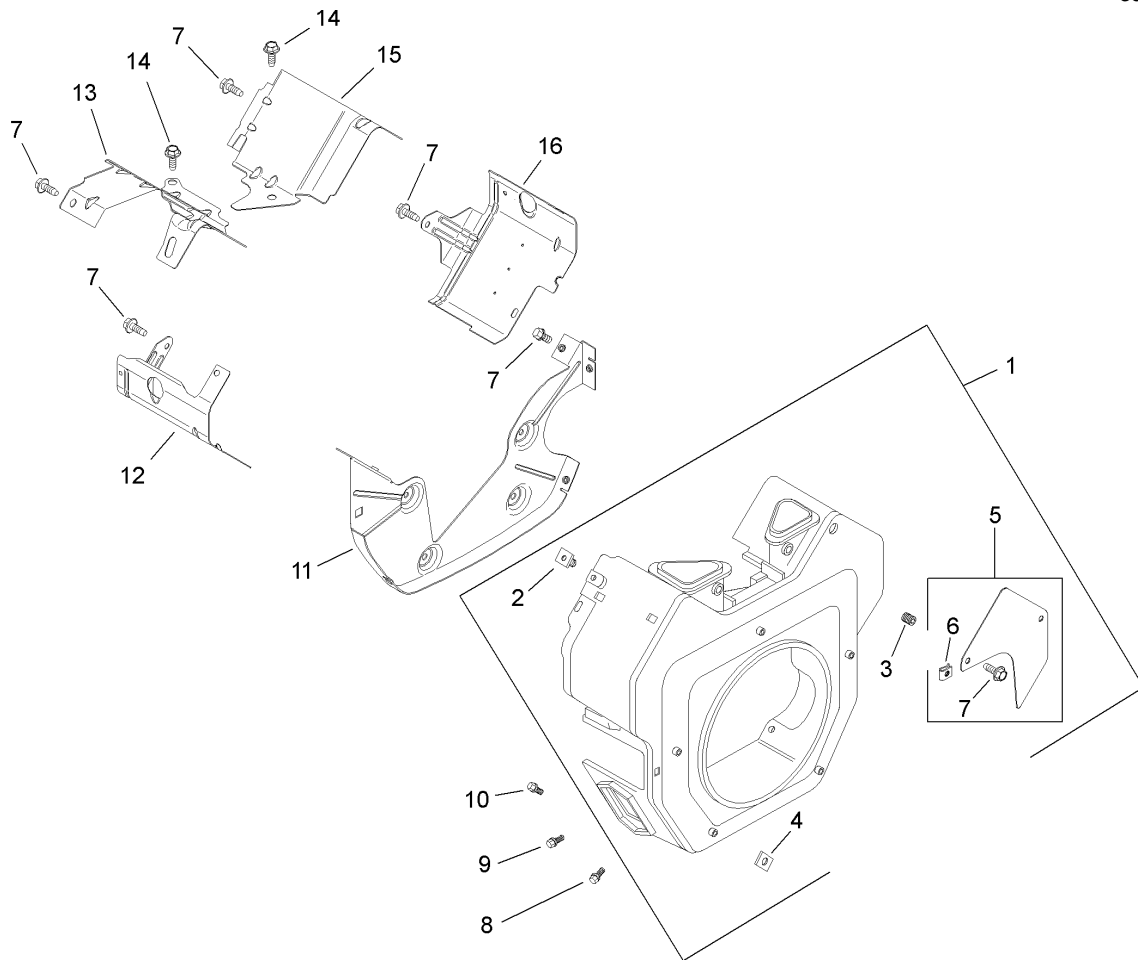
Ref	Part No.	Qty.	Description
22	24 100 10-S	8	Nut-HF (M8X1.25)
23	M-640034-S	2	Screw-HF (M6X1.0X34)
24	24 755 140-S	1	Valve Cover Kit
25	25 755 13-S	1	Oil Fill Cap ASM
26	25 153 02-S	1	O-Ring
27	12 445 05-S	1	Strap-Lifting
28	24 402 03-S	1	Reed-Breather
29	66 018 04-S	1	Retainer-Reed, Breather
30	M-545010-S	1	Screw-HHFTF (M5X0.8X10)
31	24 050 01-S	1	Filter-Breather
32	24 033 01-S	1	Breather Kit
33	24 041 51-S	1	Gasket-Breather
34	24 096 86-S	1	Cover-Breather
35	M-645020-S	4	Screw-Flange, Hex (M6X1.0X20)
36	25 237 08-S	1	Clamp-Hose
37	24 326 77-S	1	Hose-Breather
38	25 237 14-S	1	Clamp-Hose
14	24 755 147-S	1	Cylinder Head Hardware Kit



## Ignition / Electrical Assembly Kohler CH740 0075

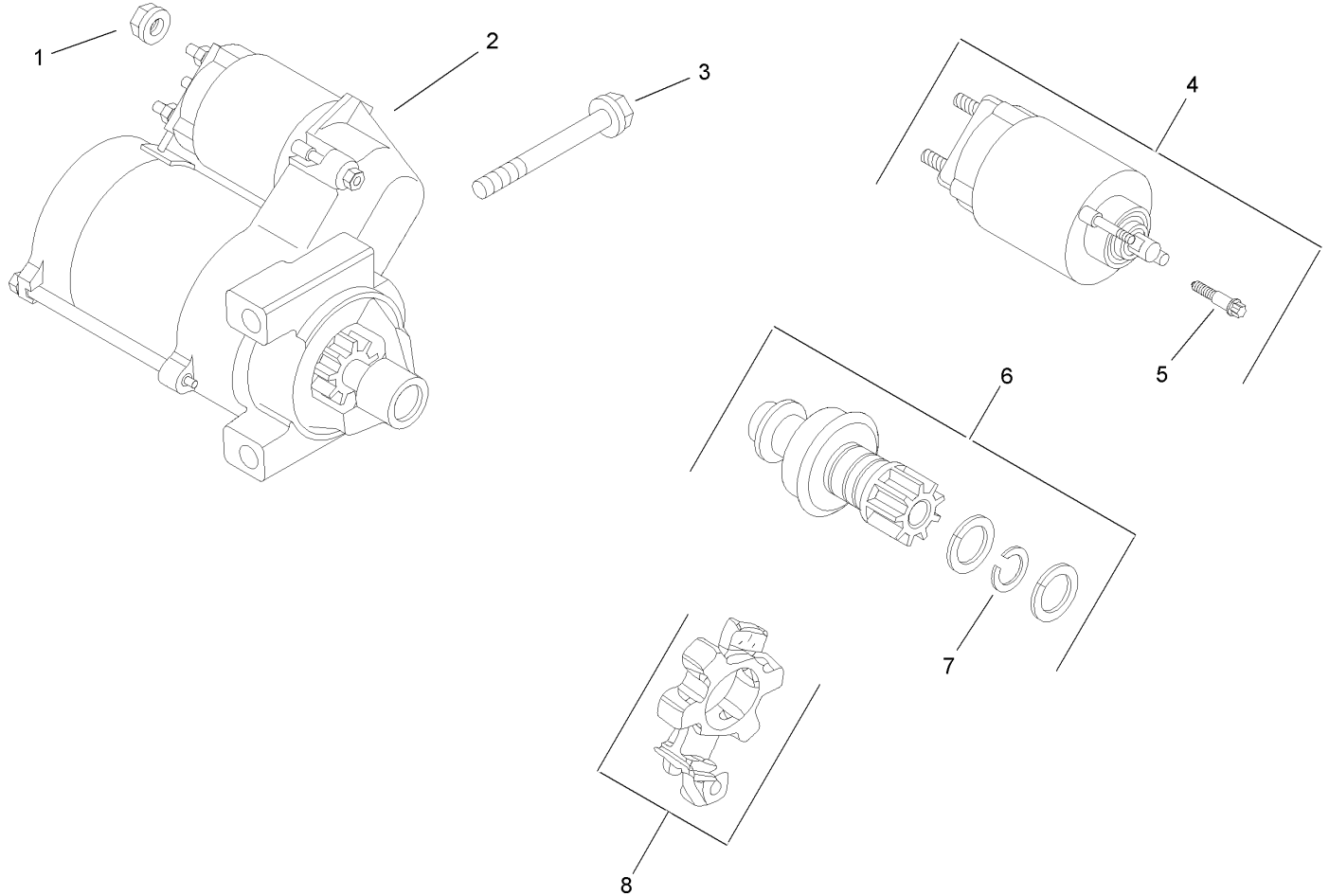
Ref	Part No.	Qty.	Description
❶	54 755 09-S	1	Stator Kit
❷	24 126 137-S	1	Bracket-Strap, Ground
❸	M-548025-S	2	Screw-HHFTF (M5X0.8X25)
❹	24 584 31-S	1	Module-Advance, Spark
❺	M-545020-S	1	Screw-HHFTF (M5X0.8X20)
❻	12 132 02-S	2	Spark Plug
❼	24 025 15-S	1	Flywheel
❽	X-42-15-S	1	Key (.19 X .62)
❾	12 468 03-S	1	Washer-Flat (.38)
❿	12 086 14-S	4	Screw-Hex, Flange (M10X1.5X45)
⓫	24 100 02-S	4	Nut-Plastic
⓬	24 584 36-S	4	Module-Ignition
⓭	24 086 41-S	1	Screw-Phl HD (11-16X1/2)
⓮	24 755 08-S	1	Front Drive Shaft Kit
⓯	M-839025-S	4	Screw-HF (M8X1.25X25)
⓰	24 157 11-S	4	Fan
⓱	24 468 11-S	1	Washer-Spring
⓲	24 112 14-S	1	Spacer
⓳	24 141 06-S	2	Ring-Support
⓴	24 162 22-S	1	Screen-Grass
⓵	25 086 43-S	1	Screw-Set
⓶	M-603100-S	2	Screw-HH (M6X1.0X100)
⓷	X-25-53-S	4	Washer-Flat (.25)
⓸	24 086 18-S	4	Screw-Phl HD (11-16X.88)

Ref	Part No.	Qty.	Description
❶❷	X-25-92-S	1	Washer-Flat (.188)
❶❸	41 403 09-S	1	Rectifier-Regulator
❶❹	236602-S	1	Connector (3 Contact)
❶❺	47 154 01-S	1	Clip-Cable
❶❻	X-25-63-S	1	Washer-Flat (.25)
❶❼	48 154 02-S	1	Clip-Cable
❶❽	25 468 07-S	1	Washer-Flat (.22)
❶❾	24 176 98-S	1	Harness-Wiring
❶❿	25 454 03-S	2	Tie-Wire



## Blower Housing and Baffle Assembly Kohler CH740 0075

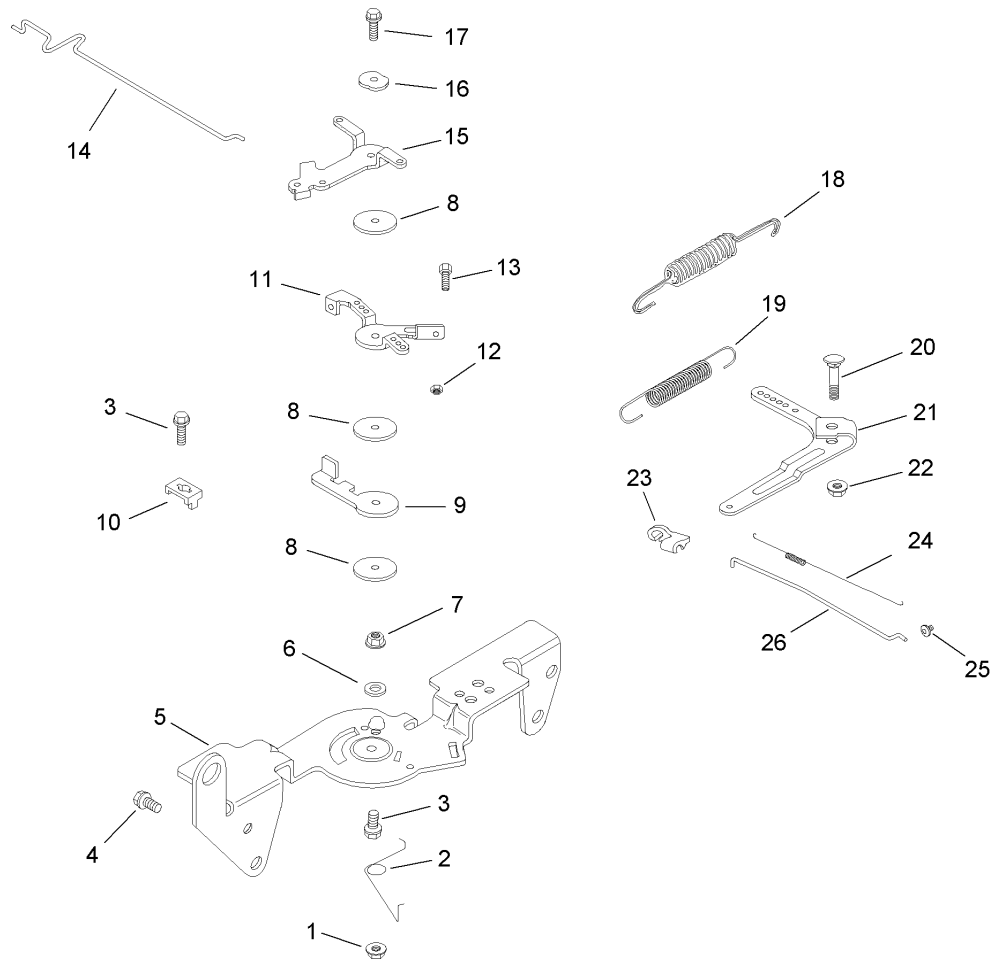
Ref	Part No.	Qty.	Description
④1	24 027 201-S	1	Housing-Blower
④2	24 100 02-S	2	Nut-Plastic
④3	25 086 43-S	1	Screw-Set
④4	24 100 01-S	3	Nut-Plastic
④5	25 755 21-S	2	Access Panel Kit
④6	25 154 02-S	4	Clip-Mounting
④7	M-645016-S	10	Screw-HHFTF (M6X1.0X16)
④8	M-561016-S	1	Screw-HHFTF (M5X.8X16)
④9	M-545016-S	2	Screw-HHFTF (M5X0.8X16)
④10	M-545020-S	4	Screw-HHFTF (M5X0.8X20)
④11	24 146 53-S	1	Plate-Backing
④12	24 063 39-S	1	Baffle-Barrel, Cylinder (No. 2 Side)
④13	24 063 70-S	1	Baffle-Valley (No. 2 Side)
④14	M-545010-S	2	Screw-HHFTF (M5X0.8X10)
④15	24 063 59-S	1	Baffle-Valley (No. 1 Side)
④16	24 063 58-S	1	Baffle-Barrel, Cylinder (No. 1 Side)
①④	25 154 11-S	1	Clip-Repair (Speed Nut)
①④	41 037 10-S	1	Nameplate-Service

## Starting System Assembly Kohler CH740 0075

Ref	Part No.	Qty.	Description
1	M-841080-S	1	Nut-Hex, Flange (M8X1.25)
2	25 098 09-S	1	Starter ASM
3	M-839080-S	2	Screw-Hex, Flange (M8X1.25X70)
4	25 435 06-S	1	Solenoid Kit
5	25 086 113-S	3	Screw-Torx Head, External
6	25 755 33-S	1	Pinion Drive Kit
7	25 141 05-S	1	Ring-Retaining
8	25 221 01-S	1	Brush Kit



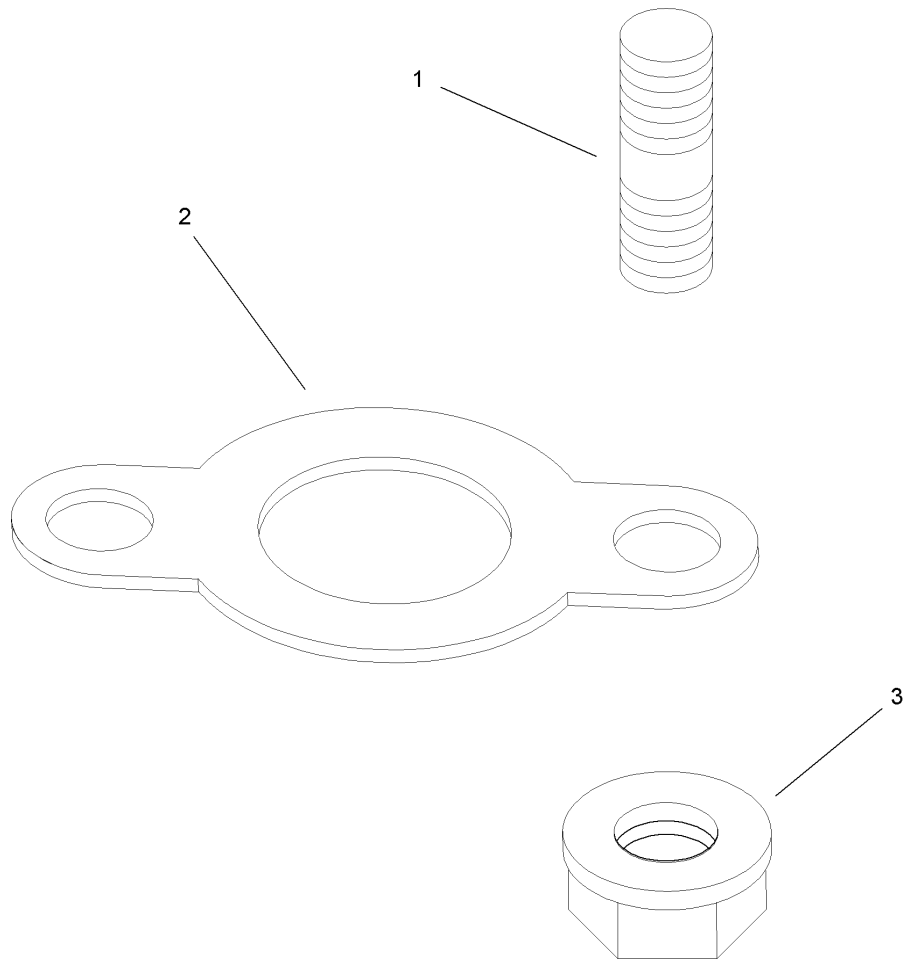



## Engine Control Assembly Kohler CH740 0075

Ref	Part No.	Qty.	Description
④1	M-547050-S	1	Nut-Hex, Lock (M5X0.8)
④2	24 089 03-S	1	Spring-Return, Choke
④3	M-545016-S	1	Screw-HHFTF (M5X0.8X16)
④4	M-645016-S	1	Screw-HHFTF (M6X1.0X16)
④5	24 126 56-S	1	Bracket-Control
④6	X-20-1-S	1	Washer-Lock (.25)
④7	M-541050-S	1	Nut-HF (M5X0.8)
④8	24 468 01-S	1	Washer-Flat (5.5 Mm)
④9	24 090 07-S	1	Lever-Actuator, Throttle
④10	12 237 01-S	1	Clamp-Cable
④11	24 090 03-S	1	Lever-Control, Throttle
④12	M-446030-S	1	Nut-Hex (M4X0.7)
④13	M-401030-S	1	Screw (M4X0.7X30)
④14	24 079 21-S	1	Linkage-Choke
④15	24 090 05-S	1	Lever-Choke
④16	41 468 03-S	1	Washer-Spring (.25)
④17	M-545020-S	1	Screw-HHFTF (M5X0.8X20)
④18	24 089 51-S	1	Spring-Limiter, Throttle
④19	24 089 46-S	1	Spring-Governor
④20	24 211 03-S	1	Bolt-Rd HD Sq Neck (M6X1.0X25)
④21	24 090 33-S	1	Lever-Governor
④22	M-641060-S	1	Nut-Hex, Flange (M6X1.0)
④23	25 158 11-S	1	Bushing-Linkage, Throttle
④24	24 089 01-S	1	Spring-Linkage

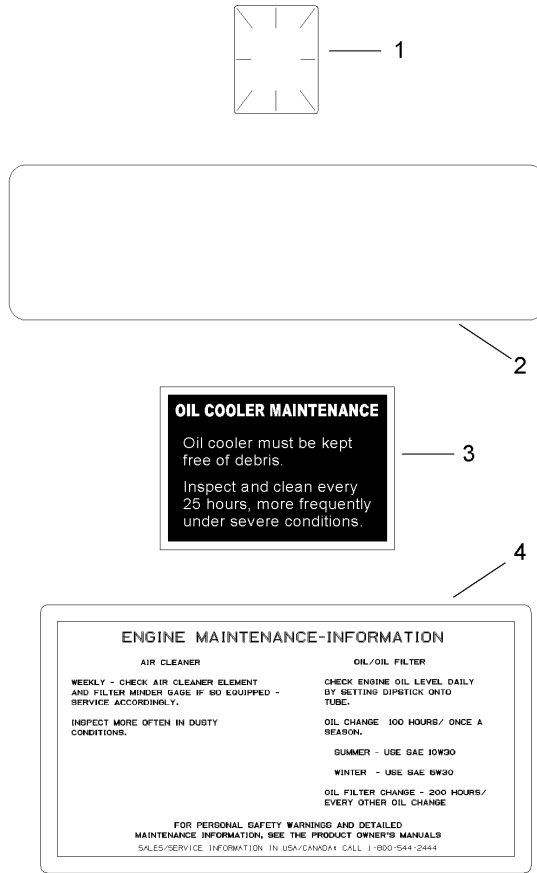
Ref	Part No.	Qty.	Description
④25	25 158 08-S	1	Bushing-Retaining, Linkage
④26	24 079 01-S	1	Linkage-Throttle





## Exhaust Assembly Kohler CH740 0075

Ref	Part No.	Qty.	Description
❶	25 072 04-S	4	Stud (M8X1.25X33)
❷	24 041 49-S	2	Gasket-Manifold, Exhaust
❸	M-841080-S	4	Nut-Hex, Flange (M8X1.25)



Artwork is representative  
Actual labels may differ depending on model and specification number

## Decals

### Kohler CH740 0075

Ref	Part No.	Qty.	Description
④1	25 113 39-S	1	Decal-Laminate, Clear
④2	24 113 132-S	1	Decal-27Hp
④3	24 113 25-S	1	Decal-Cooler, Oil
④4	25 113 27-S	1	Decal-Cleaner, Air
①④	24 522 307	1	Short Block
①④	24 755 113-S	1	Gasket Set

--	--	--	--

# Attachments and Accessories

## For 74292 - Z500 Z Master, With 60in 7-Gauge Side Discharge Mower

Product Name	Model/Part
Winter Hydraulic Filter .....	1-633752
Z Stand Kit .....	105-1622
1.25 Inch Spark Arrester Kit .....	105-1672
Blade-Mid Flow, 20.5 Inch .....	105-7715-03
Blade-Lo Flow, 20.5 Inch .....	105-7716-03
Blade-Hi Flow, 20.5 Inch .....	105-7718-03
Blade-Recycler, 20.5 Inch .....	105-7777-03
Blade-Atomic, 20.5 Inch .....	105-8777-03
60 Inch Recycler Kit .....	107-1611
Striping Kit .....	107-1630
Turbo Baffle Kit .....	107-1634
Suspension Kit for Standard Seat .....	107-1892
Light Kit .....	107-9880
6 Pack Blade, 20.5 Inch Hi-Flow .....	108-1114
6 Pack-Blade, 20.5 Inch Atomic .....	108-1115
6 Pack Blade, 20.5 Inch Mid-Flow .....	108-1123
6 Pack-Blade, 20.5 Inch Lo Flow .....	108-1128
Roller Striping Kit .....	108-2162
6 Pack-Blade, 20.5 Inch Recycler .....	110-0405
Cool Top ROPS Mounted Fan .....	110-1996
Bimini Sunshade .....	110-5726
Castor Wheel Assembly (Semi Pneumatic) .....	110-5746
Deck Lift Assist Kit .....	110-5761
Channel Reinforcement Kit .....	112-8674
DFS Vac Collection System .....	78513
Chute Gate Kit .....	78521
Deluxe Suspension Seat Kit .....	78530
Triple Bag Assembly .....	78534
Blower and Drive Kit .....	78538
Filter Minder Gauge .....	99-4664
Hitch Kit .....	99-8925

# NOTES

# NOTES

# NOTES

