



## 4-Wheel Brake Conversion Kit Mid-Duty Workman® Vehicle

Model No. 115-2200

### Parts Catalog

---

#### Ordering Replacement Parts

To order replacement parts, please supply the part number, the quantity, and the description of each part desired.

#### Understanding Reference Numbers

Each identified part in an illustration has a reference number. The reference number for a part also appears in the parts list, along with other information about the part.

This catalog uses two special reference number formats, one to indicate parts in a service assembly and another to indicate the quantity of a given part in an illustration.

#### Service Assembly Reference Numbers

Parts in service assemblies have reference numbers in the form a:b. The a represents the reference number of the entire service assembly and the b represents a sequential number unique to each part within the service assembly.

For example, a wheel assembly might be identified by reference number 6, the tire by 6:1, the valve by 6:2, and the wheel by 6:3. When you order the assembly identified by reference number 6, you receive all parts identified by reference numbers 6:1, 6:2, and 6:3. However, you may also order any part individually. Reference numbers of this type appear in illustrations and in part lists.

#### Reference Numbers Indicating Quantity

In an illustration, if a reference number indicates more than one part, the reference number has the form nX y. The n represents the quantity of the part, the X is the multiplication symbol, and the y represents the reference number.

For example, in an illustration, the reference number 2X 37 means that two of the parts identified by reference number 37 are indicated.

## Contents

Description	Page	Description	Page
Parking Brake Assembly	..... 3	Rear Brake Assembly	..... 6
Front Brake Assembly	..... 4	Left Hand Brake Assembly No. 104-6807	..... 7
Master Cylinder Assembly No. 104-6782	..... 5	Right Hand Brake Assembly No. 104-6806	..... 8

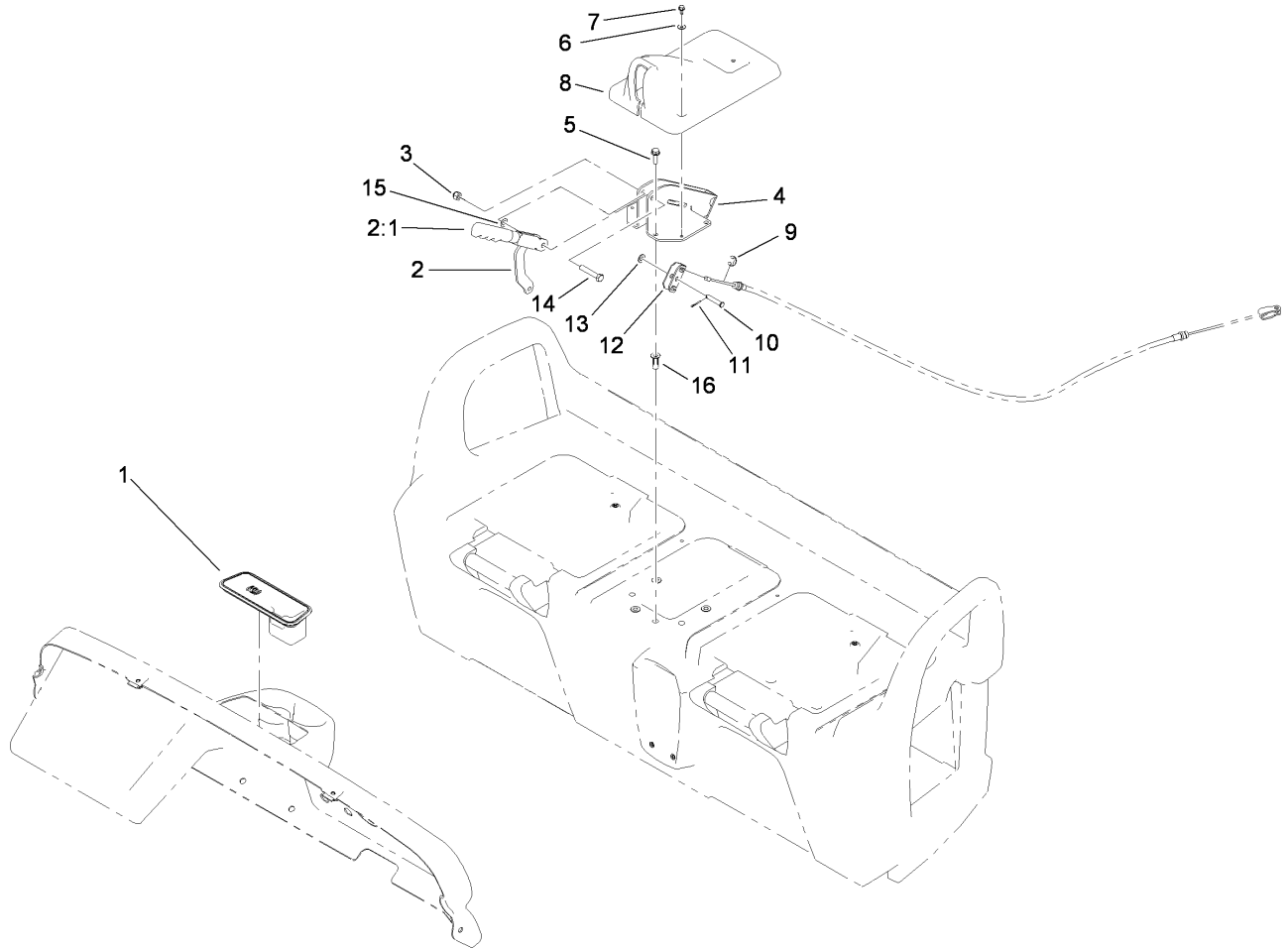
## Part Description Abbreviations

Part descriptions in this catalog may include the following abbreviations.

AR. .... as required	HYD. .... hydraulic
ASM. .... assembly	LH. .... left hand
BBC. .... blade brake clutch	NI. .... nylon insert
CARR. .... carriage	NPTF. .... national pipe thread fine
DEG. .... degrees	PFH. .... phillips flat head
EXT. .... external	PPH. .... phillips pan head
FH. .... flat head	PPHTF. .... phillips pan head thread forming
GA. .... gauge	PRH. .... phillips round head
HD. .... heavy-duty	PTH. .... phillips truss head
HF. .... hex flange	PTO. .... power-take-off
HH. .... hex head	RH. .... right hand
HHF. .... hex head flange	ROPS. .... roll-over protection system
HHFTF. .... hex head flange thread forming	SFH. .... slotted fillister head
HJ. .... hex jam	SHH. .... slotted hex head
HLH. .... hex lag head	SHWH. .... slotted hex washer head
HOC. .... height-of-cut	SPH. .... slotted pan head
HSBH. .... hex socket button head	SQH. .... square head
HSFH. .... hex socket flat head	SRH. .... slotted round head
HSH. .... hex socket head	STD. .... standard
HWH. .... hex washer head	TAP. .... self tapping
HWHTF. .... hex washer head thread forming	TTH. .... torx truss head

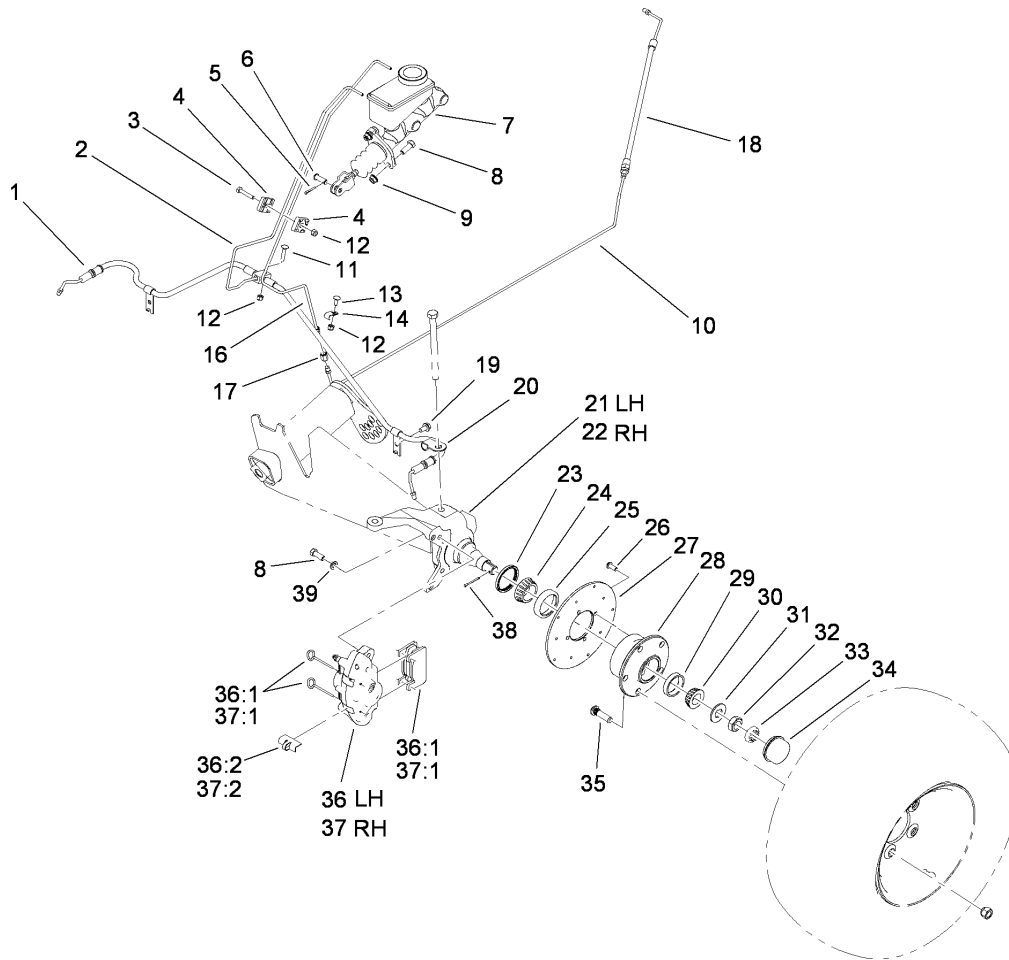
## Footnotes

- ❶ Not serviced separately



## Parking Brake Assembly

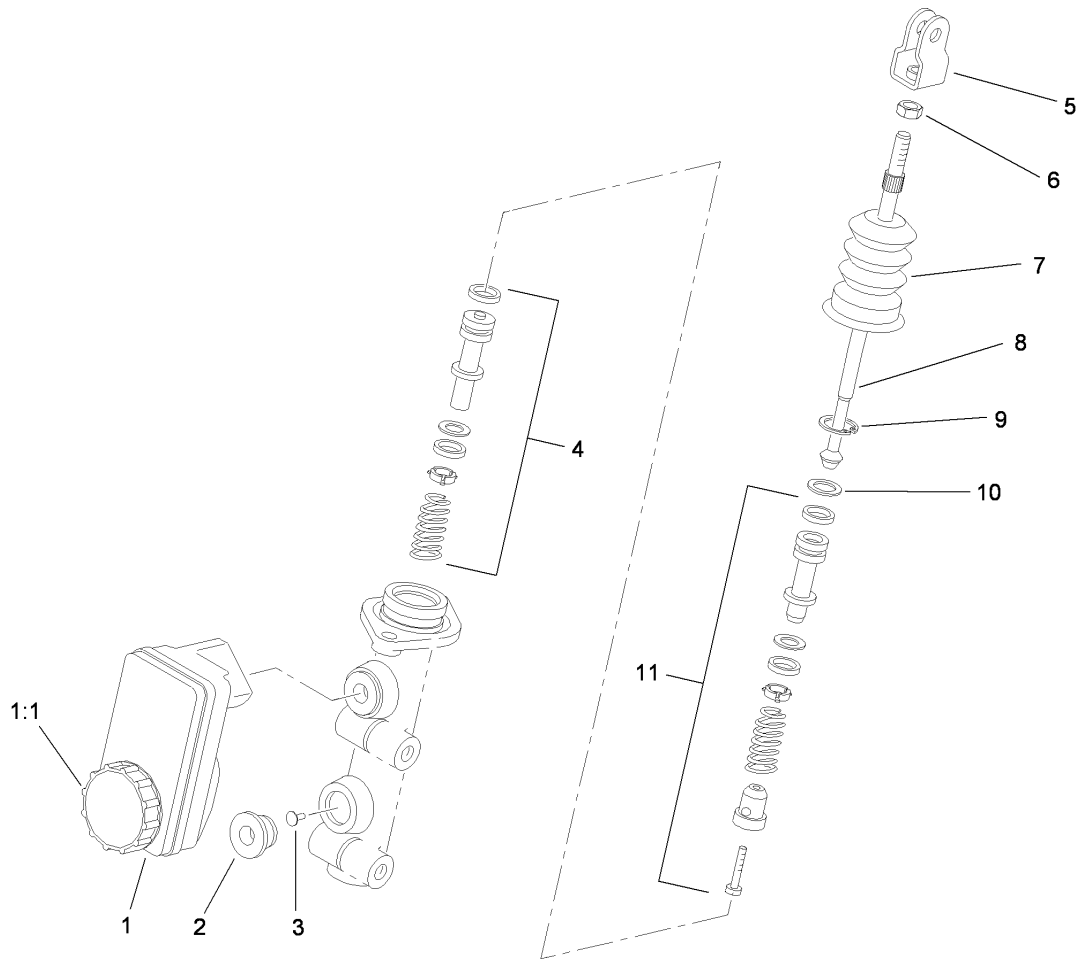
Ref	Part No.	Qty.	Description				
1	104-6930	1	Plug-Rubber				
2	104-6842	1	Lever-Brake, Park				
2:1	106-7972	1	Grip-Handle				
3	3296-39	1	Nut-Lock, NI				
4	104-6844-03	1	Support-Brake, Park				
5	3234-17	4	Screw-HHF				
6	3256-1	2	Washer-Flat				
7	12-3270	2	Screw				
8	104-7014	1	Cover-Brake, Parking				
9	32120-47	2	Ring-Retaining, External				
10	94-3829	1	Pin-Clevis				
11	3272-6	1	Pin-Cotter				
12	87-3480	1	Bracket-Equalizer, Cable				
13	3256-23	1	Washer-Flat				
14	323-10	1	Screw-HH				
15	3290-477	1	Washer-Curved				
16	104-7090	4	Nut-Plus, Aluminum				



## Front Brake Assembly

Ref	Part No.	Qty.	Description
1	104-7256	1	Front Hose ASM
2	104-6798	1	Tube-Brake, Front
3	321-9	1	Screw-HH
4	87-7660	2	Clamp-Tube
5	3272-10	1	Pin-Cotter
6	283-2	1	Pin-Clevis
7	104-6782	1	Cylinder-Master
8	323-6	6	Screw-HH
9	3290-357	2	Nut-HHF, Whiz
10	104-6794	1	Tube-Brake, Rear
11	3229-3	1	Screw-CARR
12	3296-42	3	Nut-Lock, NI
13	3229-11	1	Screw-CARR
14	2412-89	1	Clamp
16	104-6793	1	Tube-Brake, Rear
17	87-3570	1	Union
18	104-6795	1	Hose-Brake, Rear
19	32144-14	2	Screw-HWHTF
20	104-7073	2	Bracket-Hose
21	104-6876	1	Spindle-Disc, LH
22	104-6877	1	Spindle-Disc, RH
23	108-7019	2	Seal-Shaft
24	254-106	2	Cone-Bearing, Tapered
25	254-107	2	Cup-Bearing, Tapered

Ref	Part No.	Qty.	Description
26	3274-55	8	Screw-HSBH
27	104-6891	2	Rotor
28	104-6809	2	Hub
29	254-72	2	Bearing-Cup, Tapered
30	254-94	2	Bearing-Cone, Tapered
31	93-0309	2	Washer-Tab
32	3220-7	2	Nut-Jam
33	93-0307	2	Nut-Lock, Retainer
34	241-119	2	Cap-Dust
35	10-6830	10	Stud-Type, Drive
36	112-3150	1	Caliper-LH
36:1	107-0708	1	Friction Pad And Pin Kit
36:2	112-3152	1	Spring-Rattle, Anti
37	112-3151	1	Caliper-RH
37:1	107-0708	1	Friction Pad And Pin Kit
37:2	112-3152	1	Spring-Rattle, Anti
38	3272-12	2	Pin-Cotter
39	3253-21	4	Washer-Lock



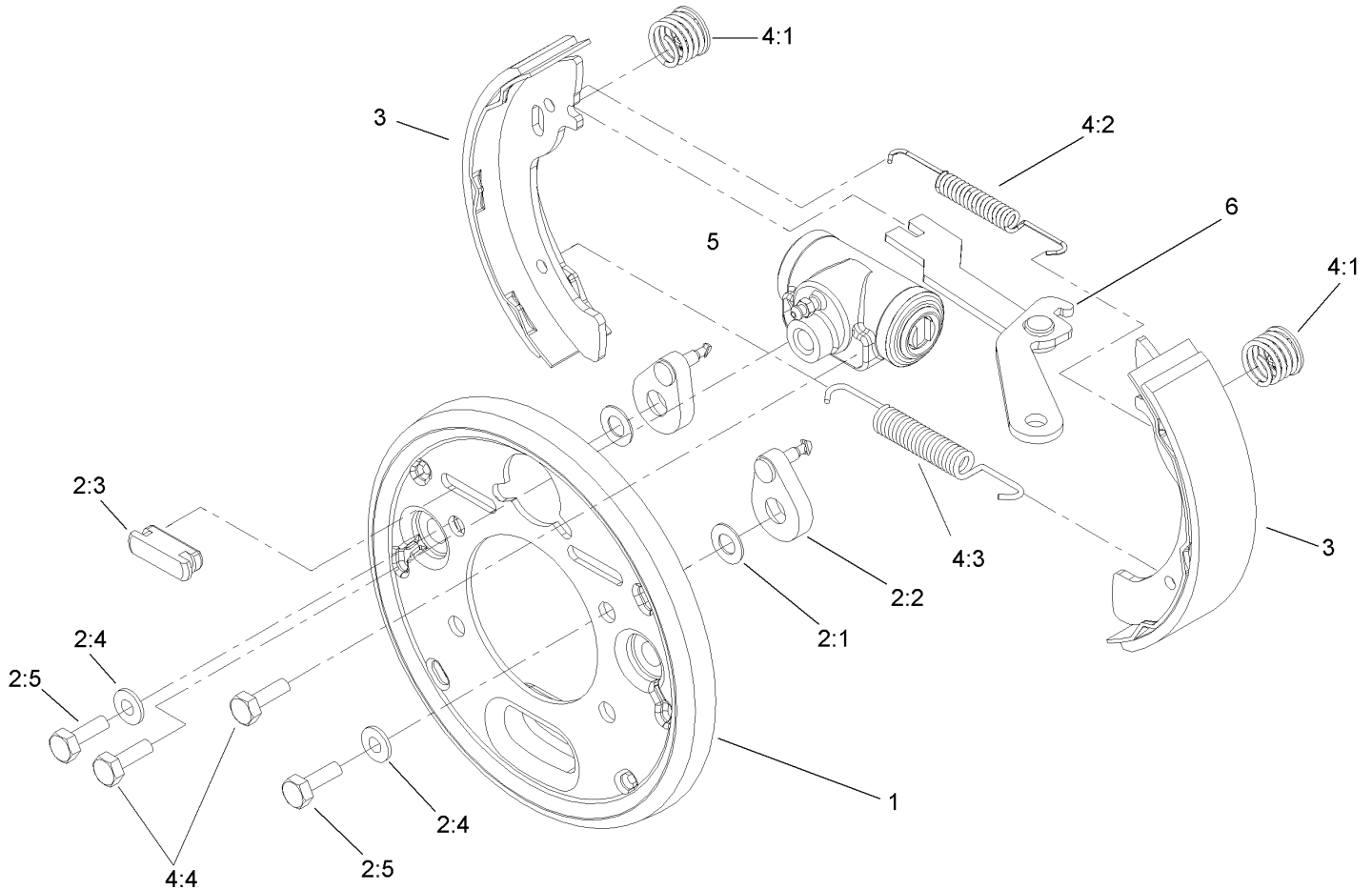
## Master Cylinder Assembly No. 104-6782

Ref	Part No.	Qty.	Description
1	104-6845	1	Reservoir ASM
1:1	92-4112	1	Cap ASM
2	93-8971	2	Seal-Port, Flange
3	92-4103	1	Pin-Stop
4	92-4102	1	Secondary Piston ASM
5	92-4110	1	Clevis
6	21-0360	1	Nut-Hex
7	94-5209	1	Cover-Dust
8	94-5210	1	Rod-Push
9	92-4109	1	Ring-Snap
10	92-4108	1	Retainer-Washer
11	92-4101	1	Primary Piston ASM

--	--	--	--







## Right Hand Brake Assembly No. 104-6806

Ref	Part No.	Qty.	Description
1	100-8586	1	Backing Plate ASM
2	104-6820	1	Adjuster Kit
2:1	100-8585	2	Washer-Bellville
2:2	100-8588	2	Adjuster Lever ASM
2:3	100-8584	2	Cover-Dust
2:4		2	Screw
2:5		2	Bolt
3	104-6818	4	Shoe And Lining Kit
4	104-6819	1	Hardware Kit
4:1	100-8583	2	Shoe Hold Down Spring ASM
4:2	100-8581	2	Spring-Upper
4:3	100-8582	2	Spring-Lower
4:4		2	Bolt & Washer
5	104-6824	1	Wheel Cylinder ASM
6	104-6826	1	RH Park Brake Lever ASM

## NOTES

# NOTES

# NOTES

