



## Spiker Greensmaster® 3000 Series

Model No. 04494 - 280000001 and up.

### Parts Catalog

---

#### Ordering Replacement Parts

To order replacement parts, please supply the part number, the quantity, and the description of each part desired.

#### Understanding Reference Numbers

Each Identified part in an illustration has a reference number. The reference number for a part also appears in the parts list, along with other information about the part.

This catalog uses two special reference number formats, one to indicate parts in a service assembly and another to indicate the quantity of a given part in an illustration.

#### Service Assembly Reference Numbers

Parts in service assemblies have reference numbers in the form a:b. The a represents the reference number of the entire service assembly and the b represents a sequential number unique to each part within the service assembly.

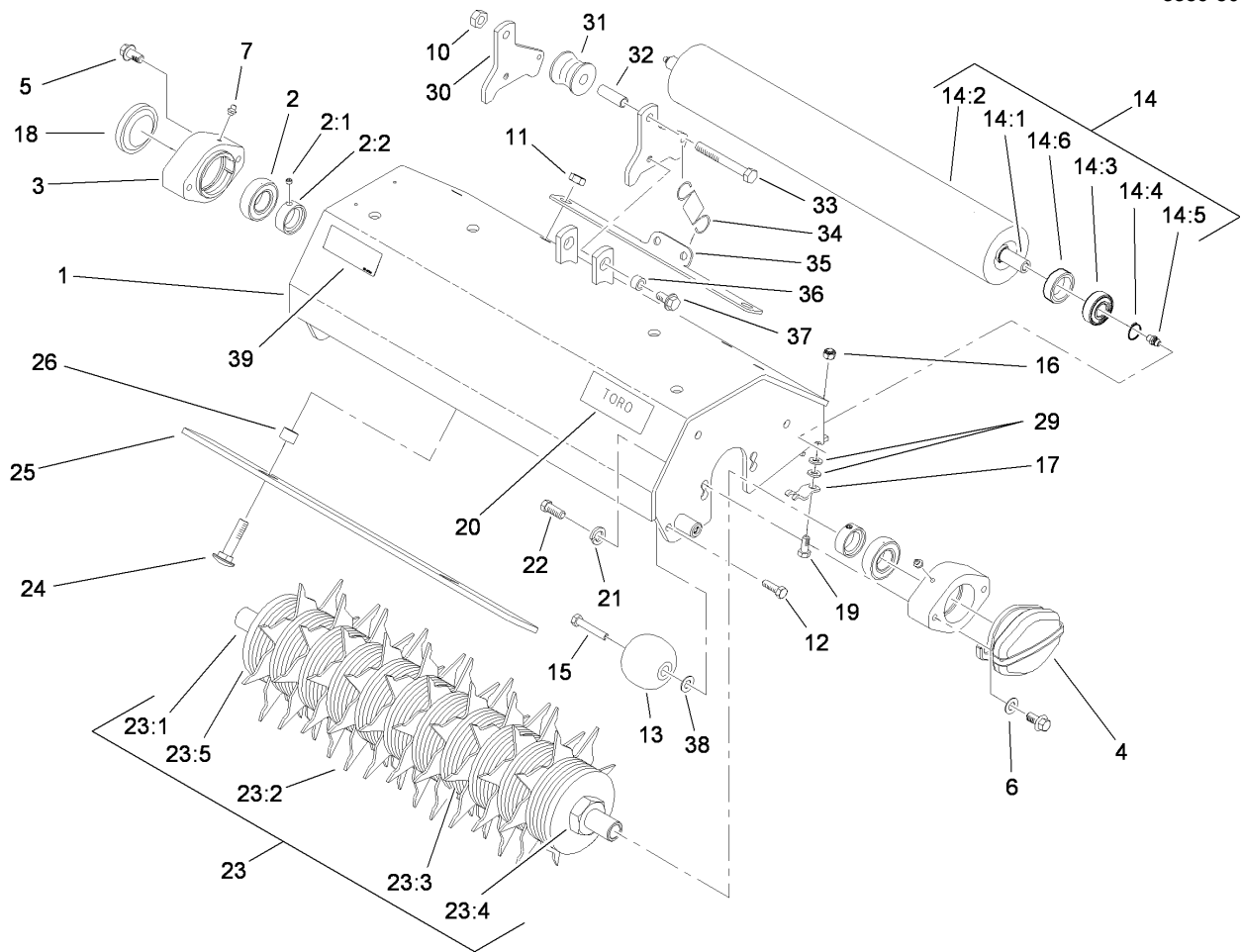
For example, a wheel assembly might be identified by reference number 6, the tire by 6:1, the valve by 6:2, and the wheel by 6:3. When you order the assembly identified by reference number 6, you receive all parts identified by reference numbers 6:1, 6:2, and 6:3. However, you may also order any part individually. Reference numbers of this type appear in illustrations and in part lists.

#### Reference Numbers Indicating Quantity

In an illustration, if a reference number indicates more than one part, the reference number has the form nX y. The n represents the quantity of the part, the X is the multiplication symbol, and the y represents the reference number.

For example, in an illustration, the reference number 2X 37 means that two of the parts identified by reference number 37 are indicated.





## Spiker Assembly

Ref	Part No.	Qty.	Description
1	100-6443-01	1	Frame ASM
2	94-3405	2	Bearing-Ball
2:1	3245-35	1	Screw-Set
2:2	251-77	1	Collar-Lock, Bearing
3	95-7148	2	Housing-Bearing
4	95-1642-01	1	Weight-Counter
5	93-2569	4	Screw-HHF
6	3256-24	2	Washer-Flat
7	302-5	2	Fitting-Grease
10	3296-39	1	Nut-Lock, NI
11	33026-00	2	Nut-Lock
12	323-5	2	Screw-HH
13	99-4210	2	Roller-Anti Scalp
14	99-1615	1	Rear Roller ASM
14:1	93-2466	1	Shaft-Roller
14:2	99-1616	1	Rear Roller Tube ASM
14:3	93-2559	2	Bearing-Ball
14:4	93-2525	2	Ring-Retaining
14:5	302-5	2	Fitting-Grease
14:6	98-2194	2	Sleeve-Grease
15	99-4209	2	Shaft-Roller
16	33024-00	2	Nut-Lock
17	99-8168	2	Collar-HOC
18	2410-30	1	Cap-Plastic

Ref	Part No.	Qty.	Description
19	33114-025	2	Screw-HH
20	67-1300	1	Decal
21	48-9590	4	Washer-Lock
22	33115-025	4	Screw-HH
23	99-1610	1	Spiker Shaft ASM
23:1	99-1611	1	Shaft-Spiker
23:2	99-1612	10	Blade-Spiker
23:3	99-1613	73	Spacer
23:4	67-5840	2	Nut-Jam
23:5	99-1635	2	Spacer
24	33126-045	2	Screw-CARR
25	99-1637-01	1	Plate-Scraper
26	74-3730	2	Spacer-Spindle, Rear
29	3256-74	4	Washer-Flat
30	100-6446-01	2	Plate-Pivot
31	100-6449	1	Roller-Lift
32	100-6448	1	Spacer-Roller
33	323-12	1	Screw-HH
34	88-6330	1	Spring-Extension
35	100-9818-01	1	Plate-Mount, Spring
36	52-2480	2	Spacer-Wheel
37	3234-1	2	Screw-HHF
38	3256-45	2	Washer-Flat
39	115-3269	1	Decal-Regulatory

