

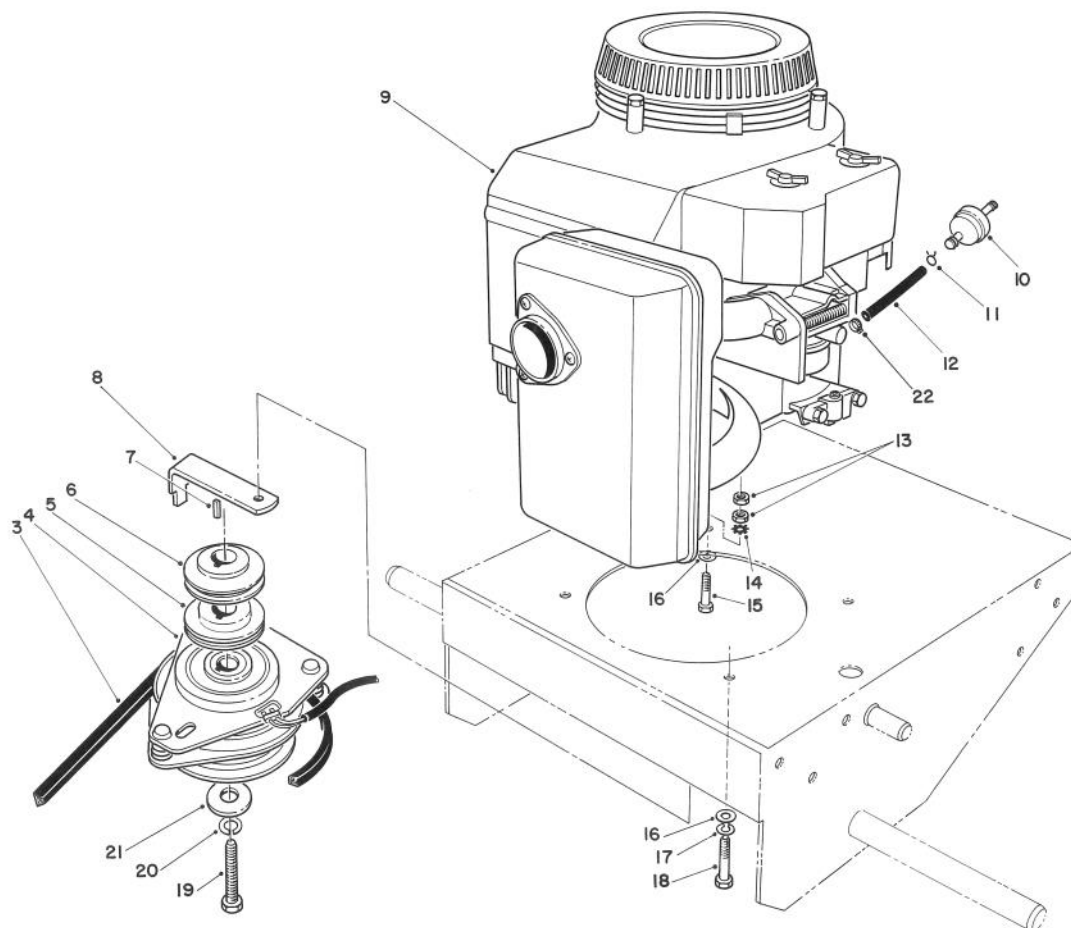
C-0505

### FRAME ASSEMBLY(Continued)

Ref. No.	Part No.	Description	No. Used
28	66-7400	Plate - Control	1
29	82-7750	Decal - Ground Speed	1
30	74-0490	Decal - Fuel Shut Off	1
31	74-0360	Frame - Rear	1
32	74-0510	Valve - Fuel	1
33	237-7	"O"Ring	1

Ref. No.	Part No.	Description	No. Used
34	82-8440	Tank - Fuel	1
35	52-2890	Bushing	2
36	3256-24	Washer	1
37	82-2370	Decal - Fuel Tank	1
*	71-3040	Replacement Axle Kit	1

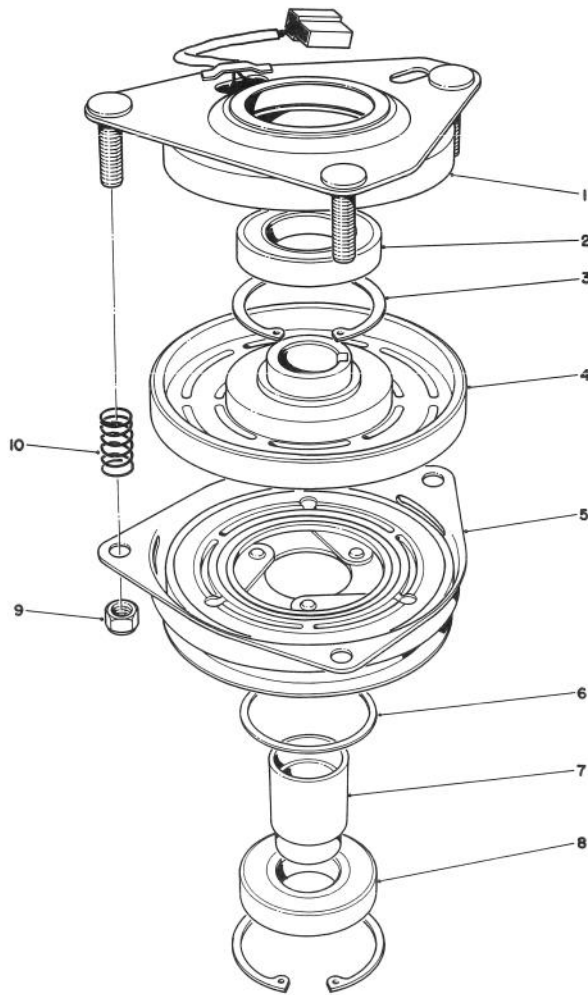
\* Not Illustrated



T-0506

## ENGINE & CLUTCH ASSEMBLY

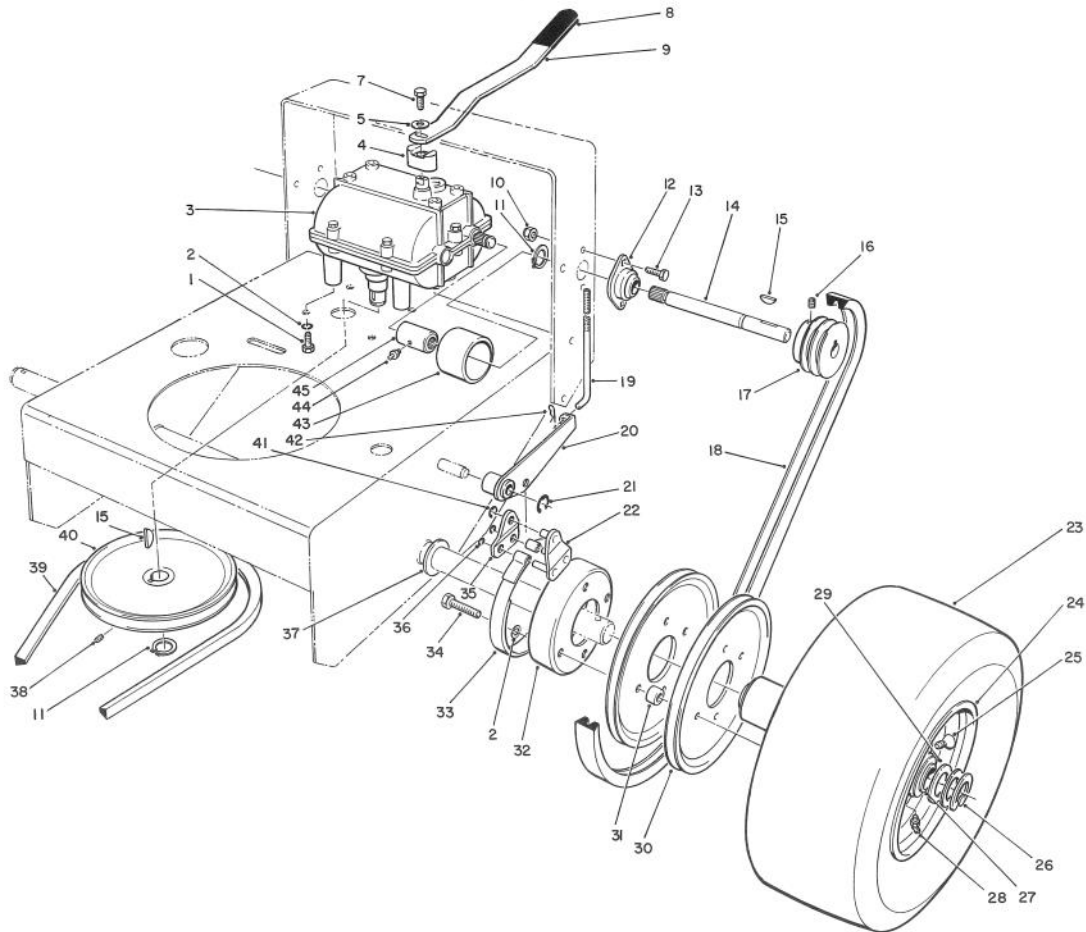
Ref. No.	Part No.	Description	No. Used	Ref. No.	Part No.	Description	No. Used
3	54-2750	V-Belt - Deck Drive	1	13	57-6390	Nut	2
4	54-3200	Clutch Brake Assembly	1	14	3255-8	Washer - External Tooth	1
5	74-0050	Sheave - Lower Half	1	15	57-6370	Screw - Hex. Hd. Cap	1
6	74-0060	Sheave - Upper Half	1	16	3256-23	Washer - Flat	3
7	5-1336	Key	1	17	3253-4	Washer - Lock	3
8	51-4540	Retainer - Clutch	1	18	57-6380	Screw - Hex. Hd. Cap	3
9		Engine - Kawasaki Model FB460V Type DS08	1	19	57-6360	Screw - Hex. Hd. Cap	1
10	56-6360	Fuel - Filter	1	20	3253-22	Washer - Lock	1
11	2412-98	Clamp - Fuel Line	2	21	44-8160	Washer - Clutch	1
12	47-2982	Hose - Gas	1	22	2412-108	Clamp - Hose	1



T-0080

## CLUTCH ASSEMBLY NO. 54-3200

Ref. No.	Part No.	Description	No. Used	Ref. No.	Part No.	Description	No. Used
1	54-0230	Field Assembly (Incl. Ref. # 2 & 3)	1	6	44-8330	Spacer - Pulley Bearing	1
2	251-292	Bearing - Field	1	7	44-8340	Collar - Bearing	1
3	44-8310	Ring - Retaining	2	8	251-291	Bearing - Pulley	1
4	44-8360	Field Coil, Rotor & Bearing Assembly (Incl. Ref. # 1)	1	9	3296-5	Nut - Lock	3
5	55-7410	Armature & Pulley Assembly (Incl. Ref. # 3, 6, 7, & 8)	1	10	44-8320	Spring	3

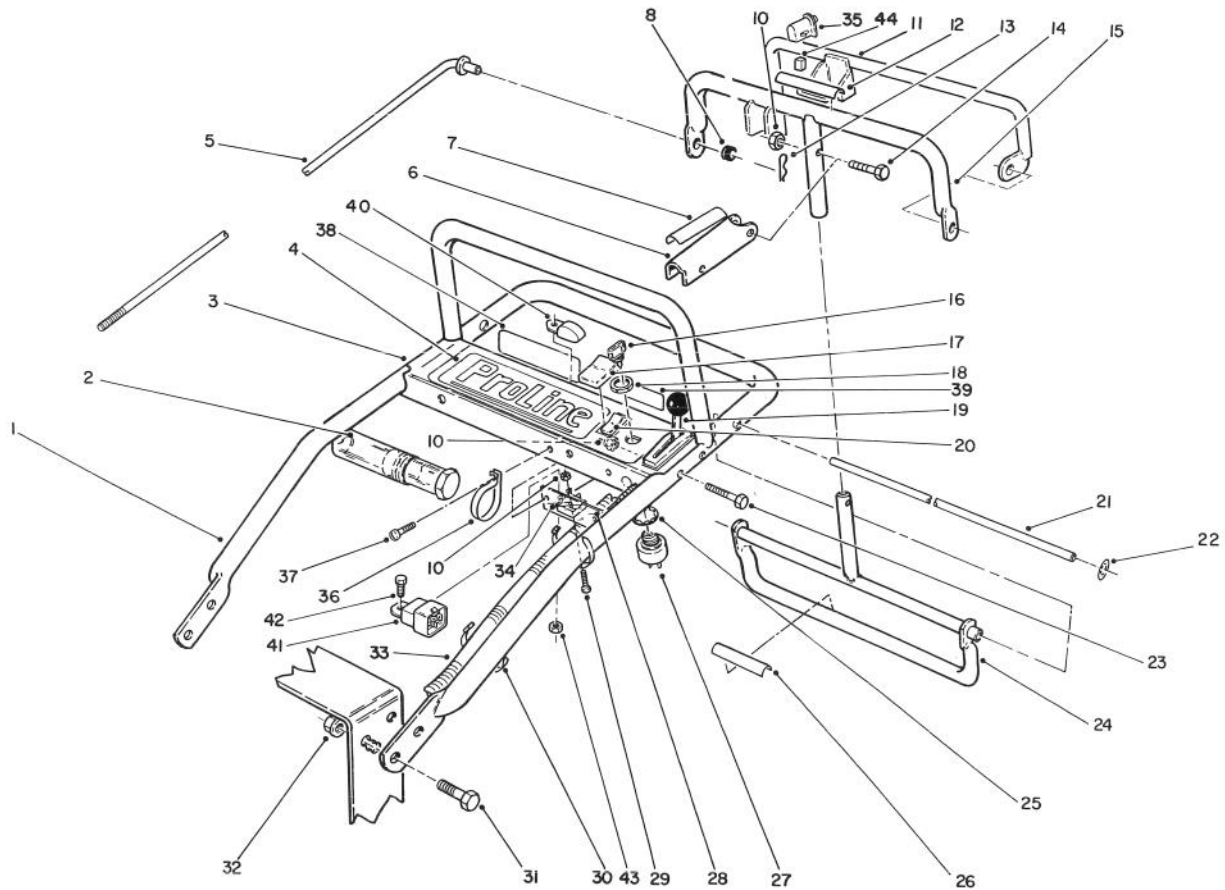


C-0502

## AXLE ASSEMBLY

Ref. No.	Part No.	Description	No. Used	Ref. No.	Part No.	Description	No. Used
1	322-2	Screw - Hex. Hd. Cap	4	23	231-111	Tire	2
2	3253-4	Washer - Lock	12	24	242-80	Rim	2
3	74-0610	Transmission	1	25	232-27	Valve Stem	2
4	72-2190	Mount - Shift Lever	1	26	32151-91	Ring - Retaining	2
5	7-5461	Spacer	1	27	92-1746	Bearing	4
7	329-10	Screw - Hex. Hd. Cap	1	28	302-11	Grease Fitting	2
8	47-1970	Grip - Engagement	1	29	10-8110	Washer - Flat	A/R
9	74-0320	Lever - Shift	1	30	51-4160	Pulley - Wheel	4
10	3296-42	Nut - Lock	4	31	51-4170	Spacer - Pulley	8
11	32120-64	Ring - Retaining	3	32	51-4180	Drum - Brake	2
12	51-4270	Bearing - Shaft Extension	2	33	51-4700	Brake Band Assembly	2
13	321-4	Screw - Hex. Hd. Cap	4	34	322-7	Screw - Hex. Hd. Cap	8
14	51-4240	Shaft - Extension R.H.	1	35	51-4660	Plate - Brake - Link	2
*	51-4250	Shaft - Extension L.H.	1	36	32151-72	Ring - Retaining	4
15	3257-5	Key - Woodruff	3	37	51-4230	Washer - Wheel	2
16	3245-3	Screw - Set Socket Hd.	2	38	3241-5	Screw - Set	1
17	74-0480	Pulley - Drive	2	39	26-9670	Belt - Traction	1
18	51-4290	Belt - Drive	2	40	51-4190	Pulley - Driven	1
19	51-4580	Rod - Brake	2	41	32151-56	Ring - Retaining	2
20	51-4610	Brake Arm L.H.	1	42	3290-307	Pin - Cotter	2
*	51-4600	Brake Arm R.H.	1	43	51-4220	Guard - Coupler	2
21	32151-40	Ring - Retaining	2	44	302-5	Fitting - Grease	2
22	51-4650	Link - Brake	2	45	51-4260	Coupler	2

\*Not Illustrated

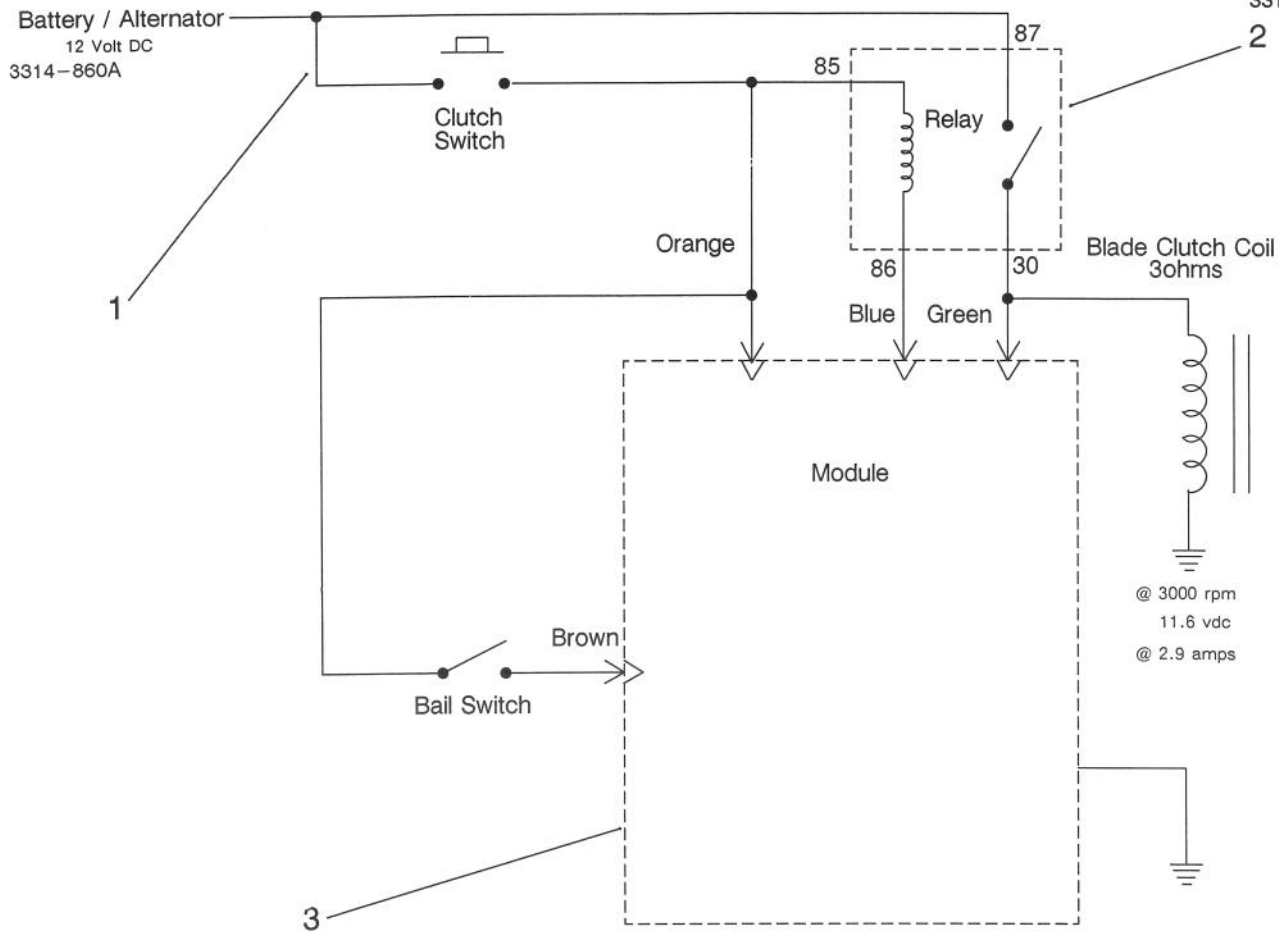


C-0506

## HANDLE ASSEMBLY

Ref. No.	Part No.	Description	No. Used
1	67-6440	Handle - Upper	1
2	74-0720	Tube - Manual	1
3	82-2180	Panel - Control	1
4	82-7730	Decal - Proline	1
5	82-7631	Rod - Control	2
6	51-4850	Lever - Parking Brake	1
7	52-2010	Decal - Parking Brake	1
8	237-141	Grommet - Rubber	2
10	3296-2	Nut - Lock	6
11	82-7680	Bail Assembly	1
12	82-2290	Decal - Control Bar	1
13	3290-307	Pin - Cotter	2
14	32105-1	Screw - Hex. Hd. Machine	1
15	82-7690	Bar - Control	1
16	63-8360	Key	2
17	82-3820	Boot - Switch	1
18	218-461	Nut	1
19	74-0740	Control - Throttle	1
20	82-2300	Switch - Clutch	1
21	74-0470	Rod - Pivot	1
22	32151-80	Ring - Push On	2
23	32105-14	Screw - Hex. Hd. Machine	4

Ref. No.	Part No.	Description	No. Used
24	74-0380	Control - Pivot	1
25	3254-5	Washer - Lock	1
26	82-2280	Decal - Reverse Handle	1
27	29-5560	Switch - Off/On (Incl. Ref. #16, 18, & 25)	1
28	57-5811	Panel - Bottom	1
29	32105-13	Screw - Machine	1
30	3290-378	Cable Tie	2
31	3234-11	Screw - Hex Hd. Cap	4
32	32128-21	Nut - Hex. Flange	4
33		Wire Harness (Ref.)	1
34	37-7600	Bridge - Rectifier	1
35	82-2190	Switch - Bail	1
36	2412-120	R-Clamp	2
37	32104-76	Screw - Self Tapping	4
38	65-3090	Decal - Instruction	1
39	71-1280	Decal - Danger	1
40	86-7910	Module - Interlock	1
41	63-7590	Relay	1
42	321-2	Screw - Hex Hd. Cap	2
43	3296-42	Nut - Hex	2
44	218-595	Connector - Body	1

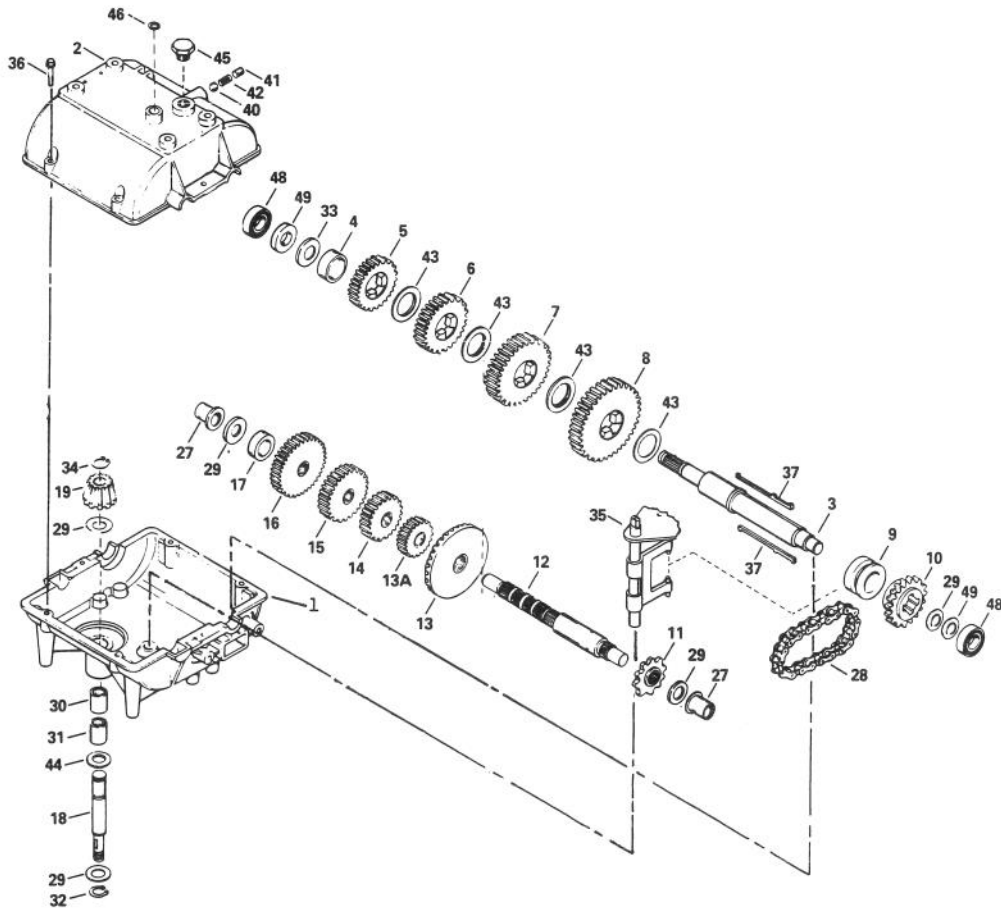


C-0707

## ELECTRIC SCHEMATIC

Ref. No.	Part No.	Description	No. Used
1	82-2240	Wire Harness	1
2	86-7910	Module - Interlock	1

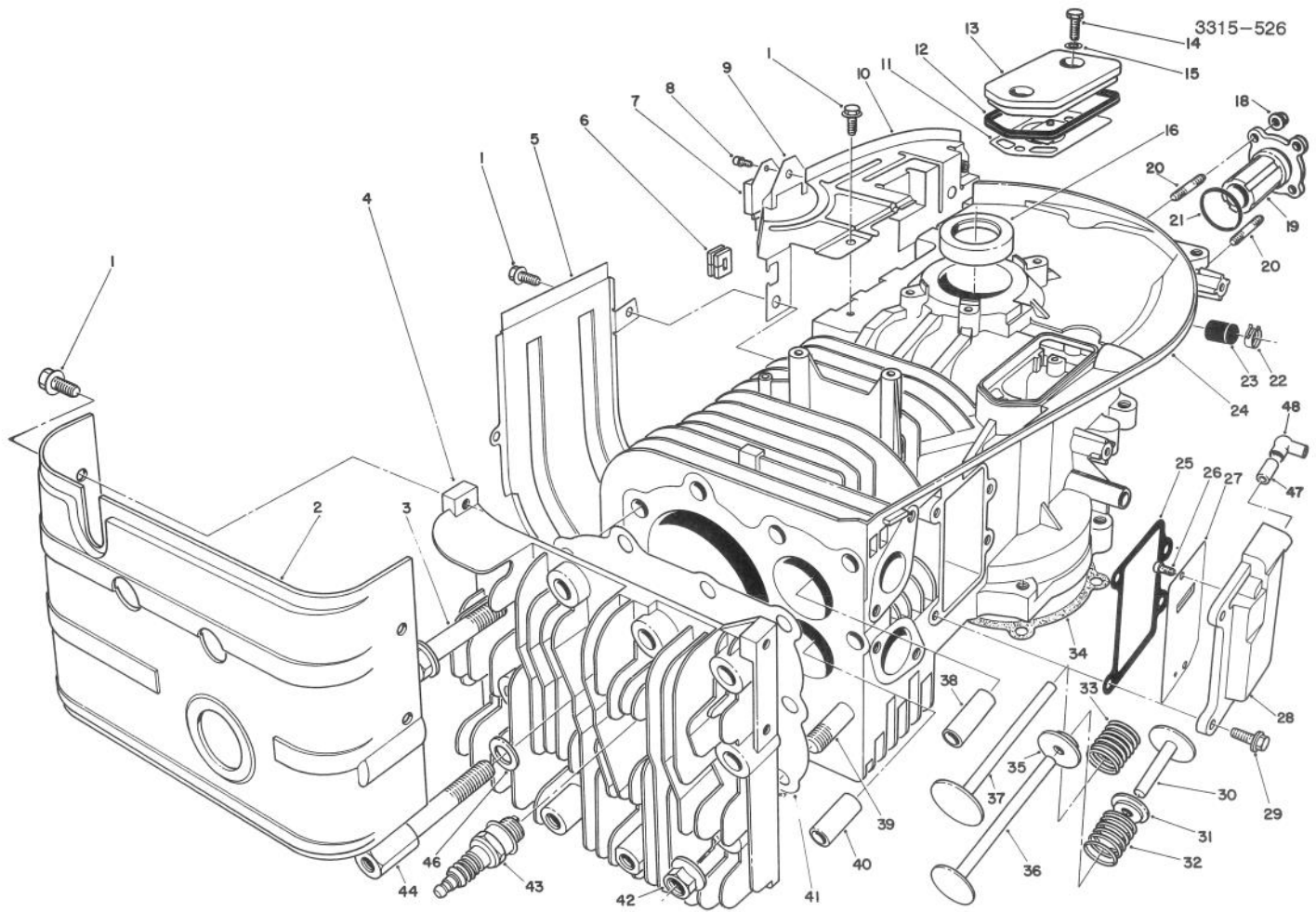
Ref. No.	Part No.	Description	No. Used
3	63-7590	Relay	1



## PEERLESS TRANSMISSION MODEL NO. 700-039

Ref. No.	Part No.	Description	No. Used
1	770090	Case - Transmission	1
2	772099	Cover - Transmission	1
3	776289A	Shaft - Output & Brake	1
4	786072	Spacer	1
5	778123A	Gear - Spur (25 Teeth)	1
6	778250	Gear - Spur (27 Teeth)	1
7	778124A	Gear - Spur (30 Teeth)	1
8	778125	Gear - Spur (35 Teeth)	1
9	784266	Collar - Shift	1
10	786083	Sprocket (18 Teeth)	1
11	786082	Sprocket (9 Teeth)	1
12	776134	Shaft - Counter	1
13	778154	Gear - Bevel (42Teeth)	1
13A	778136	Gear - Spur (15 Teeth)	1
14	778126A	Gear - Spur (20 Teeth)	1
15	778249	Gear - Spur (23 Teeth)	1
16	778127A	Gear - Spur (25 Teeth)	1
17	786071	Spacer	1
18	776135	Shaft - Input	1
19	778153	Bevel Pinion - Input	1
27	780105A	Bushing - Flanged	2

Ref. No.	Part No.	Description	No. Used
28	786081	Chain - Roller (No. 41 Chain 24 Links)	1
29	780072	Washer - Thrust	5
30	780086	Bearing - Needle	1
31	7800142	Bearing - Needle	1
32	792035	Ring - Retaining	1
33	780139	Washer - Thrust	1
34	788040	Ring - Retaining	1
35	784267	Rod & Fork Ass'y - Shift	1
36	792073	Screw - Self Tapping	6
37	792089A	Key	4
40	792077	Ball - Steel	1
41	792078	Screw - Set	1
42	792079	Spring	1
43	780108	Washer - Thrust	4
44	792001	"O"Ring	2
45	792074	Plug - Threaded	1
46	788069	Seal - Square Cut	1
48	780092	Bearing - Ball	2
49	780065	Washer - Thrust	2

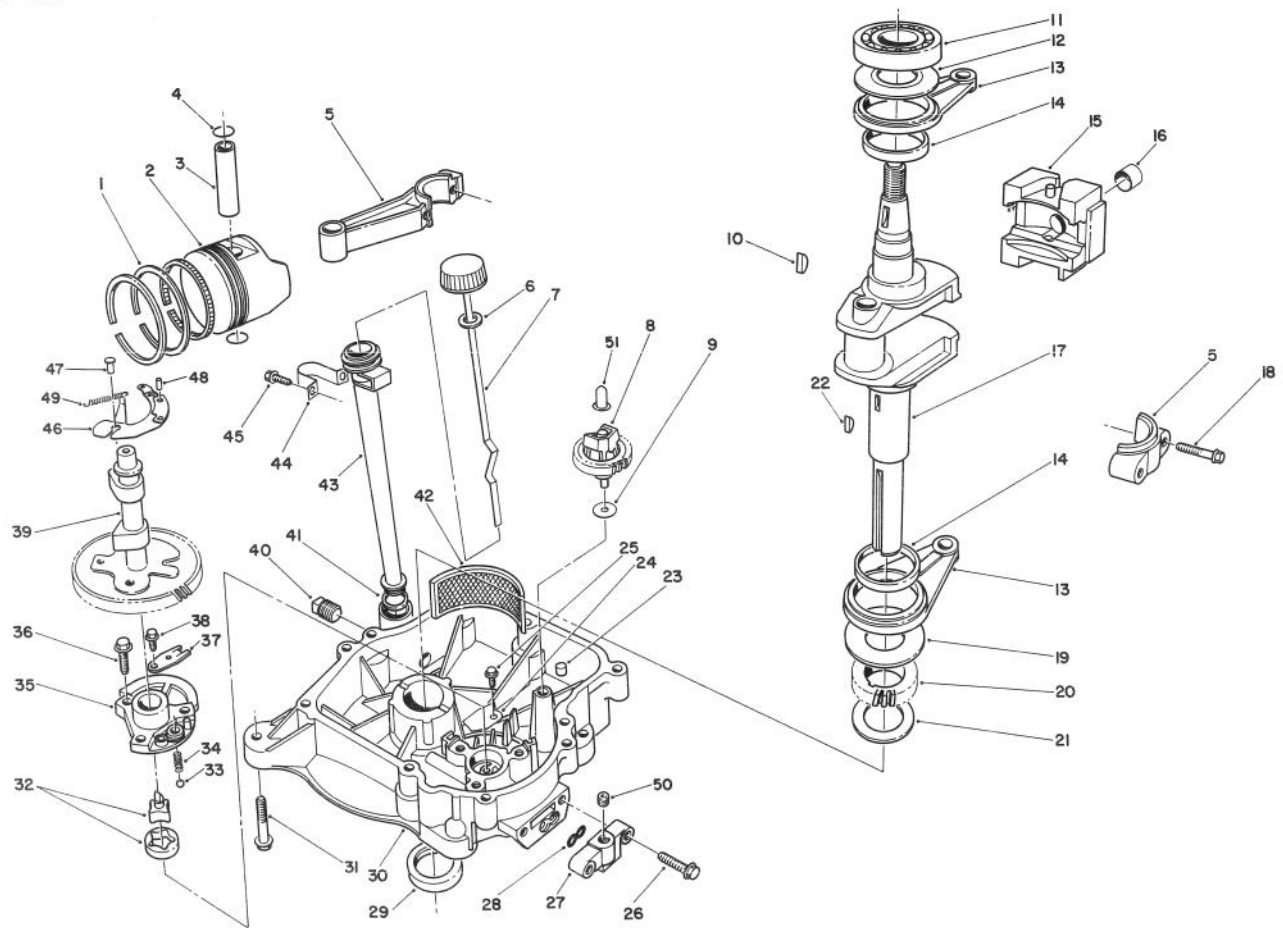


T-0509

## ENGINE ASSEMBLY

Ref. No.	Part No.	Description	No. Used
1	130G0610	Bolt	8
2	49089-2181-9H	Shroud	1
3	130G1055	Bolt	4
4	11001-2102	Head - Cylinder	1
5	49089-2199-9H	Shroud	1
6	92071-2099	Grommet	6
7	21119-2095	Igniter	1
8	234B0408	Screw	1
9	310702-8137A	Bracket	1
10	59066-2295-9H	Housing - Fan	1
11	14069-2062	Breather	1
12	11009-2339	Gasket	1
13	14025-2040	Cover	1
14	315501-5381A	Bolt	2
15	312200-7415-02	Gasket	2
16	92049-2049	Seal - Oil	1
18	92015-1193	Nut	4
19	13107-2091	Shaft	1
20	92004-2083	Stud	4
21	92055-2072	"O"Ring	1
22	31796-6812-00	Clip	1
23	92066-2096	Plug	1
24	49120-6025	Crankcase Assembly	1
25	11009-2502	Gasket	1

Ref. No.	Part No.	Description	No. Used
26	314405-3092A	Screw	2
27	14025-2143	Cover	1
28	49108-2011	Cover - Valve Chamber	1
29	130G0616	Bolt	4
30	12032-2058	Tappet	2
31	39108-2054	Retainer - Spring	2
32	49078-2058	Spring - Valve	1
33	49078-2059	Spring - Valve	1
34	11009-2337	Gasket	1
35	12039-2052	Rotator	1
36	12005-2066	Valve - Exhaust	1
37	12004-2076	Valve - Intake	1
38	49002-2070	Guide - Intake Valve	1
39	92004-2082	Stud	3
40	49002-2071	Guide - Exhaust Valve	1
41	11004-2079	Gasket	1
42	92015-2115	Nut	3
43	92070-2072	Spark Plug	1
44	92002-2258	Bolt	2
46	410B1000	Washer	1
47	92059-2142	Tube	1
48	59071-2062	Joint	1



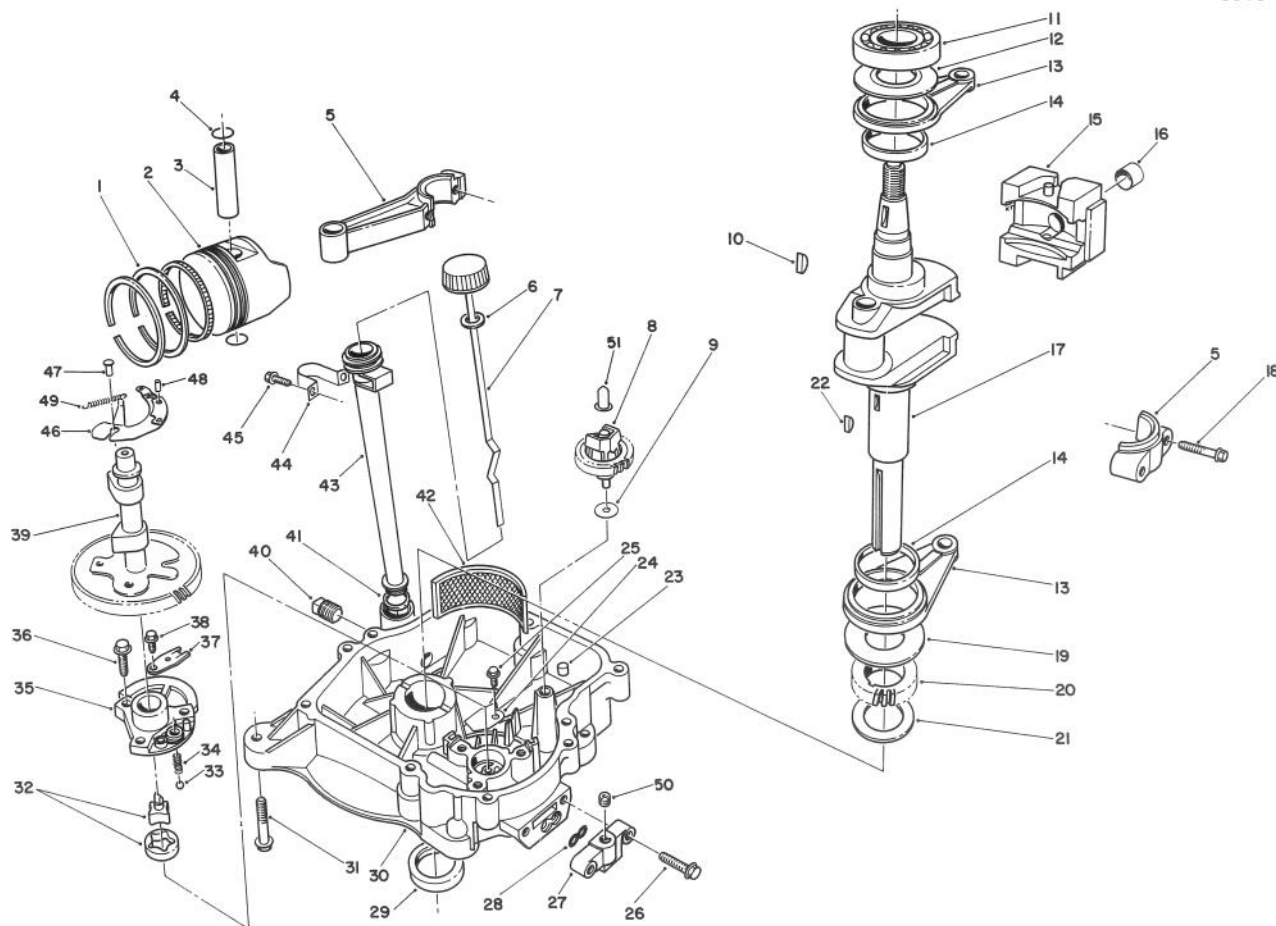
T-0510

## CRANKCASE ASSEMBLY

Ref. No.	Part No.	Description	No. Used
1	13008-6001	Piston Ring Set (Std)	1
*	13008-6002	Piston Ring Set (.25MM)	A/R
*	13008-6003	Piston Ring Set (.50MM)	A/R
*	13008-6004	Piston Ring Set (.75MM)	A/R
2	13001-2084	Piston (Std)	A/R
*	13029-2019	Piston (.25MM)	A/R
*	13029-2020	Piston (.50MM)	A/R
*	13027-2001	Piston (.75MM)	A/R
3	13002-2066	Pin - Piston	1
4	92033-2066	Ring - Snap	2
5	13251-6005	Connecting Rod Assembly	1
*	13251-6007	Connecting Rod Assembly (.50MM)	A/R
6	11009-2346	Gasket	1
7	562005-2058	Gauge	1
8	49110-2067	Governor Assembly	1
9	314401-5135A	Washer	1
10	92038-2094	Key	1

Ref. No.	Part No.	Description	No. Used
11	601A6207	Bearing - Ball	1
12	92026-2164	Spacer	1
13	46102-6001	Rod Assembly	2
14	92141-2094	Bearing Plane	2
15	13042-6006	Weight	1
16	92141-2097	Bushing	1
17	49119-2133	Crankshaft	1
18	315801-3245A	Bolt	2
19	92026-2156	Spacer	1
20	59056-2105	Gear	1
21	92025-2145	Shim (1.18)	A/R
*	92025-2146	Shim (1.25)	A/R
*	92025-2147	Shim (1.32)	A/R
*	92025-2148	Shim (1.39)	A/R
*	92025-2149	Shim (1.46)	A/R
*	92025-2150	Shim (1.53)	A/R
*	92025-2151	Shim (1.60)	A/R
*	92025-2152	Shim (1.67)	A/R
*	92025-2153	Shim (1.74)	A/R
22	92038-2094	Key	1
23	92043-1263	Pin - Dowel	2
24	13169-2359	Plate	1
25	130B0508	Bolt	1

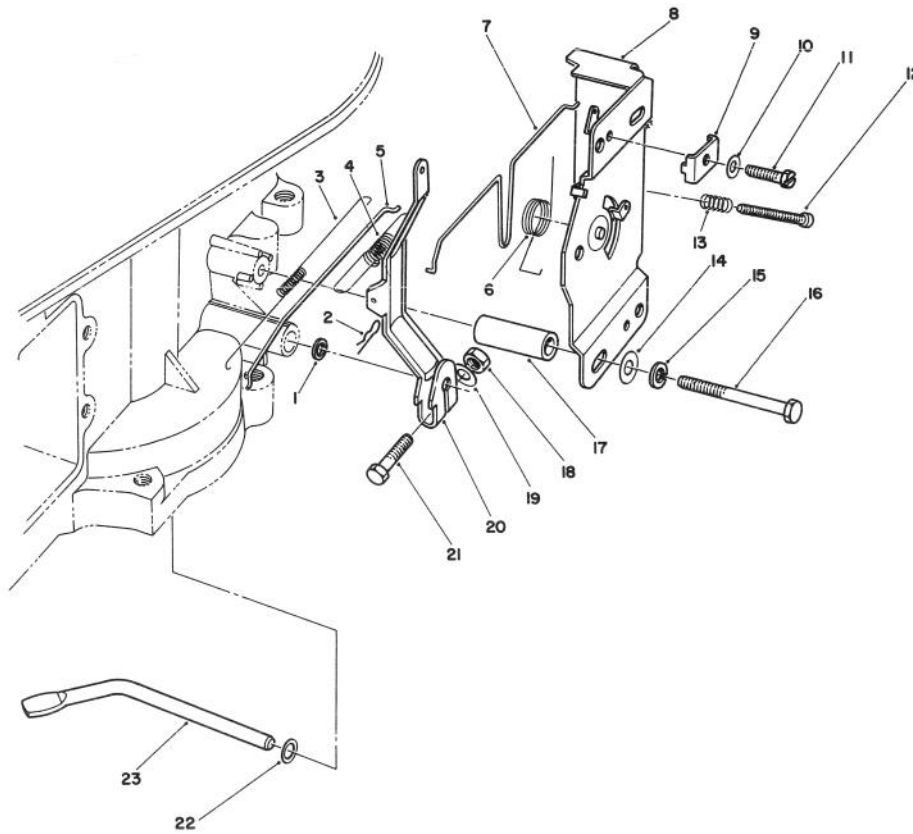
\*Not Illustrated



T-0510

## CRANKCASE ASSEMBLY (Continued)

Ref. No.	Part No.	Description	No. Used	Ref. No.	Part No.	Description	No. Used
26	130B0830	Bolt	2	39	49118-2064	Camshaft Compression	1
27	14025-2145	Cover	1	40	92066-2097	Plug - Drain	1
28	92055-2063	"O"Ring	1	41	670D2016	"O"Ring	1
29	92049-2104	Seal - Oil	1	42	49065-2056	Filter - Oil	1
30	49015-6001	Cover - Crankcase	1	43	59231-2059	Tube - Filter Oil	1
31	130G0845	Bolt	4	44	92037-2160-9H	Clamp	1
32	16082-2057	Oil Pump Assembly	1	45	130B0508	Screw	1
33	600A1000	Ball	1	46	21118-2068	Decompressor	1
34	92081-2216	Spring	1	47	92043-2113	Pin	2
35	16142-6001	Cover - Pump	1	48	92043-2167	Pin	1
36	138G0825	Bolt	3	49	92144-2171	Spring	1
37	13169-2360	Plate	1	50	92066-2102	Plug	1
38	130B0610	Bolt	1	51	42036-2060	Sleeve	1

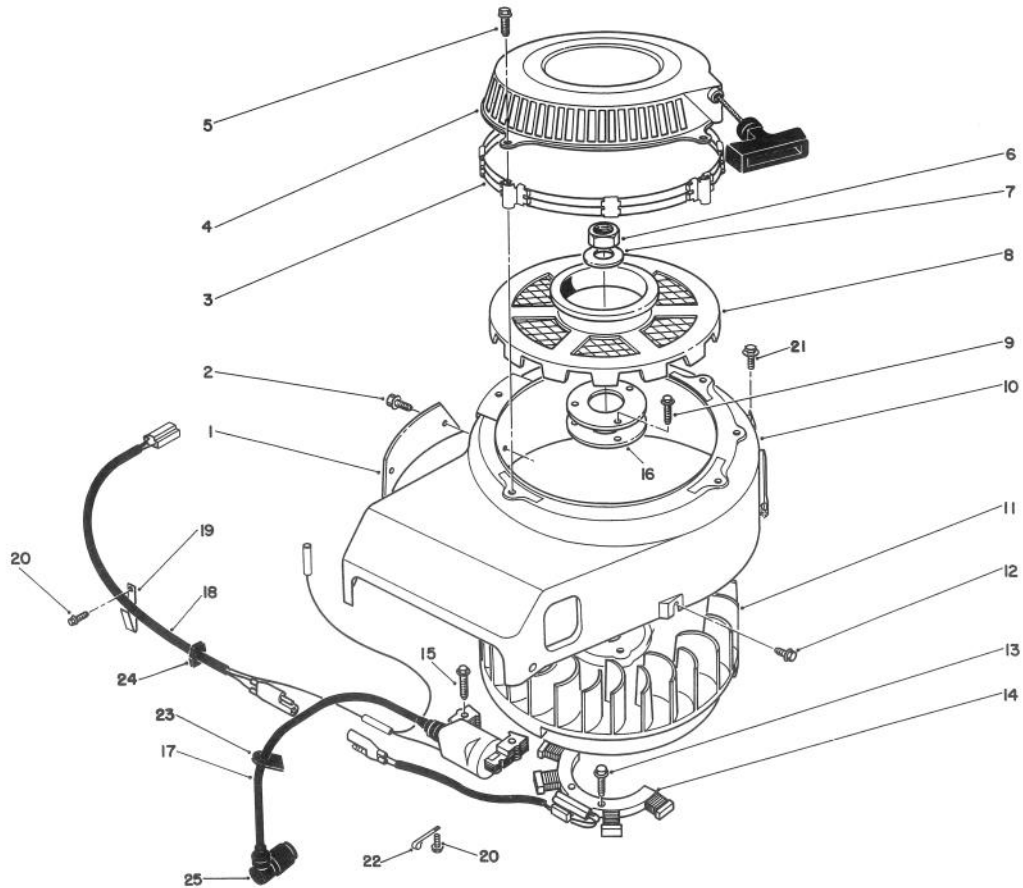


T-0511

## GOVERNOR ASSEMBLY

Ref. No.	Part No.	Description	No. Used
1	92049-2097	Seal - Oil	1
2	554A0600	Pin - Cotter	1
3	92081-2213	Spring	1
4	39129-2010	Spring	1
5	16171-2001	Link	1
6	920981-2316	Spring	1
7	16169-2074	Link - Choke	1
8	49113-2067	Control Panel Assembly	1
9	92037-2020	Clamp	1
10	411B0500	Washer	1
11	310701-1225A	Bolt	1

Ref. No.	Part No.	Description	No. Used
12	214B0425	Screw	1
13	314401-5321B	Spring	1
14	311509-3595-00	Washer	2
15	461F0600	Washer - Lock	2
16	112B0650	Bolt	2
17	92027-2071	Collar	2
18	311B0600	Nut	1
19	411B0600	Washer	1
20	21187-2052	Arm - Governor	1
21	92002-2269	Bolt	1
22	410B0600	Washer	1
23	39003-2062	Arm - Pivot	1

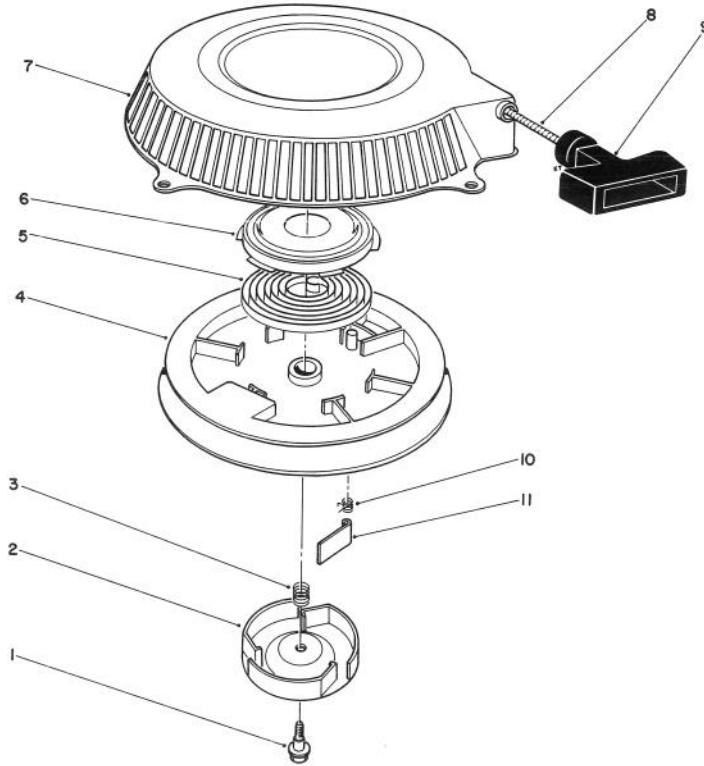


T-0512

## RECOIL & FLYWHEEL ASSEMBLY

Ref. No.	Part No.	Description	No. Used	Ref. No.	Part No.	Description	No. Used
1	14024-2038-9H	Cover	1	14	59031-2065	Coil	1
2	234B0408	Screw	2	15	130B0525	Bolt	2
3	55020-2054	Guard	1	16	92025-2161	Shim	A/R
4	49088-2212-YK	Recoil Starter Ass'y	1	17	21121-2008	Coil	1
5	130B0635	Bolt	4	18	26001-2113	Wire Harness	1
6	314G1800	Nut	1	19	313646-8161-00	Clamp	1
7	92022-2178	Washer	1	20	130G0610	Screw	2
8	49080-22123YK	Pulley	1	21	130G0614	Bolt	2
9	130G0812	Bolt	3	22	92037-2158	Clamp	1
10	59066-2310-9H	Housing - Fan	1	23	92071-2100	Grommet	1
11	21194-2001	Flywheel	1	24	92071-2099	Grommet	1
12	130B0610	Bolt	2	25	21130-2060	Cap Spark Plug	1
13	244B0620	Screw	2	*	26011-2119	Wire Lead	1

\*Not Illustrated

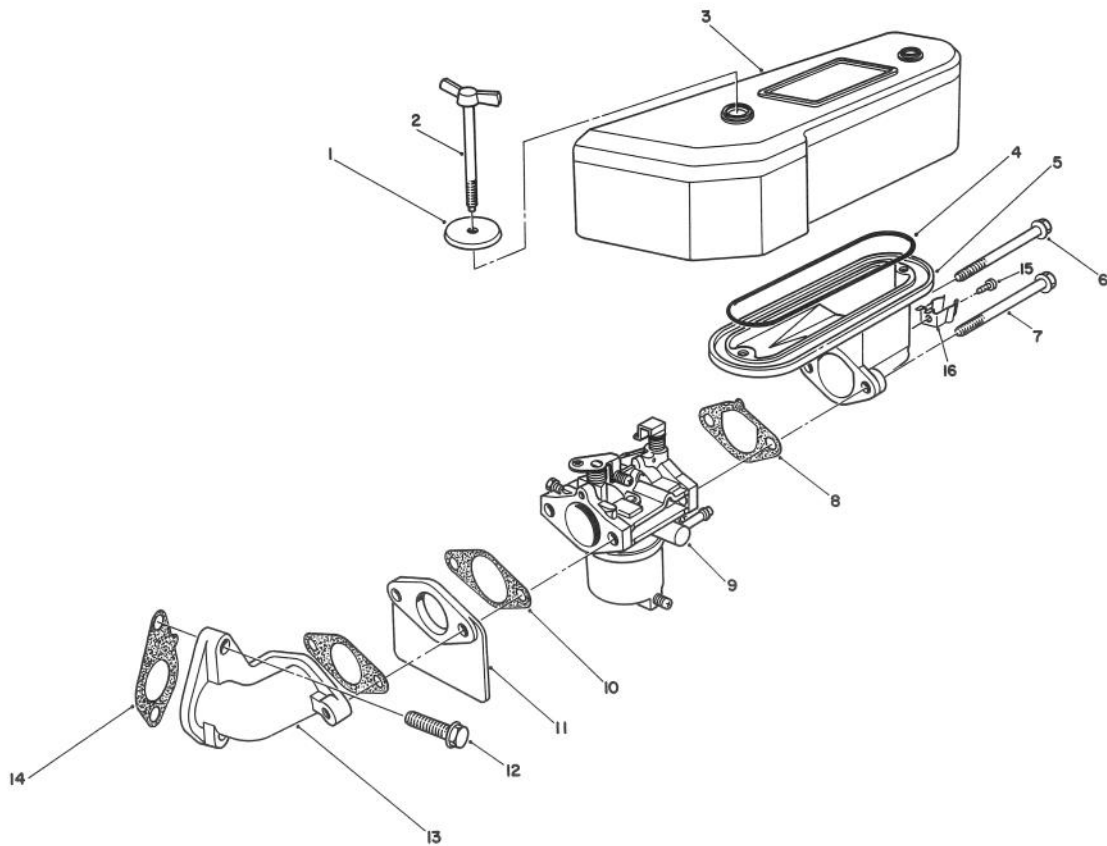


T-0513

## RECOIL ASSEMBLY

Ref. No.	Part No.	Description	No. Used
1	314501-3447A	Bolt	1
2	14020-2054	Retainer	1
3	92081-2268	Spring	1
4	59101-2054	Reel	1
5	92081-2267	Spring	1
6	32099-2060	Case	1

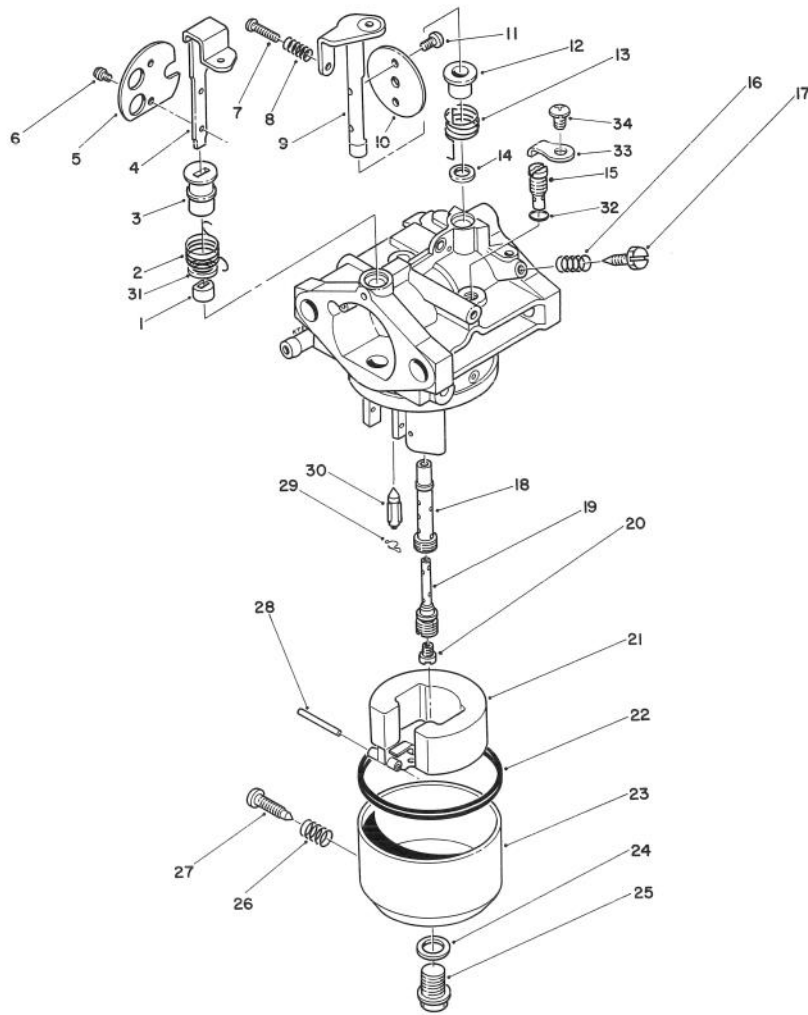
Ref. No.	Part No.	Description	No. Used
7	32099-2059YK	Case	1
8	59106-2060	Rope	1
9	46075-2059	Grip	1
10	314401-3444A	Spring - Return	3
11	13165-2057	Pawl	3
*	49088-2212-YK	Recoil Starter Ass'y	1



T-0514

## AIR CLEANER & CARBURETOR ASSEMBLY

Ref. No.	Part No.	Description	No. Used	Ref. No.	Part No.	Description	No. Used
1	92022-2220	Washer	2	9	15001-2721	Carburetor Assembly	1
2	92002-2230	Bolt	2	10	11009-2343	Gasket	2
3	11010-2291	Air Cleaner Assembly	1	11	16073-2091	Insulator	1
4	11009-2443	Gasket	1	12	130G0825	Bolt	2
5	16060-2108	Pipe - Intake	1	13	16060-2109	Pipe - Intake	1
6	92002-2254	Bolt	1	14	11009-2342	Gasket	1
7	92002-2253	Bolt	1	15	224B0508	Screw	1
8	11009-2344	Gasket	1	16	92037-2019	Clamp	1



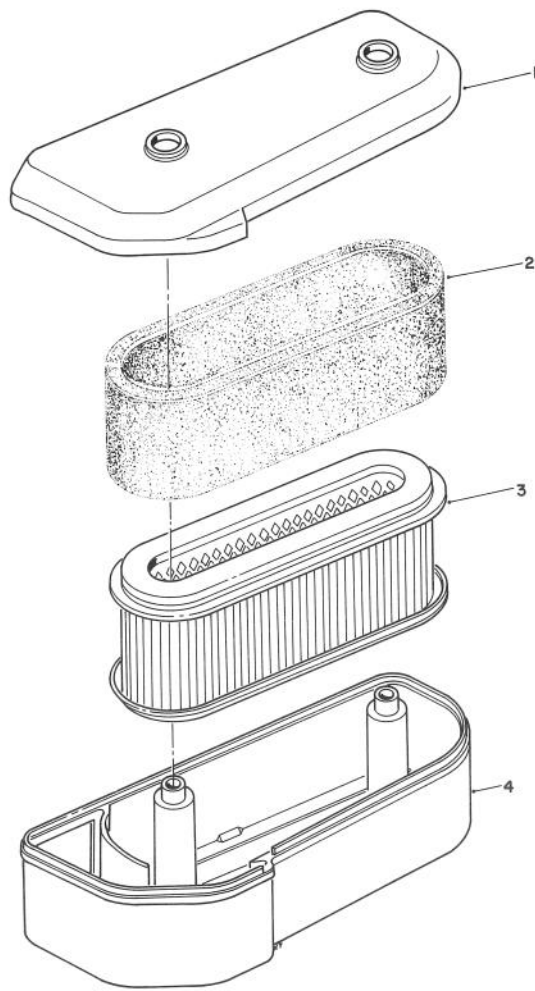
T-0515

## CARBURETOR ASSEMBLY

Ref. No.	Part No.	Description	No. Used
1	314598-6138A	Ring	1
2	92144-2160	Spring	1
3	92143-2142	Ring	1
4	16041-2010	Shaft - Choke	1
5	16126-2105	Valve - Choke	1
6	314572-6137A	Screw	2
7	92009-2079	Screw	1
8	313650-6108-00	Spring	1
9	16041-2009	Shaft - Throttle	1
10	16025-2114	Valve - Throttle	1
11	316550-6137A	Screw	2
12	92027-2025	Ring	1
13	92081-2977	Spring	1
14	316626-6206A	Seal	1
15	92064-2062	Jet	1
16	312750-6116-00	Spring	1
17	16014-2055	Screw	1
18	49121-2077	Nozzle	1

Ref. No.	Part No.	Description	No. Used
19	49123-2058	Pipe - Bleed	1
20	92063-2010	Jet	1
21	16031-2066	Float	1
22	313650-6128-00	Gasket	1
23	16020-2094	Chamber - Float	1
24	318190-6159-00	Washer	1
25	3114486-6143A	Bolt	1
26	313122-6116-00	Spring	1
27	315470-6133A	Screw	1
28	314499-6127A	Pin - Float	1
29	315721-6134A	Clip	1
30	16030-2021	Valve - Needle	1
31	92093-2069	Seal	1
32	16038-024	"O"Ring	1
33	13183-2252	Plate	1
34	92009-2244	Screw	1
*	15001-2721	Carburetor Assembly	1

\*Not Illustrated

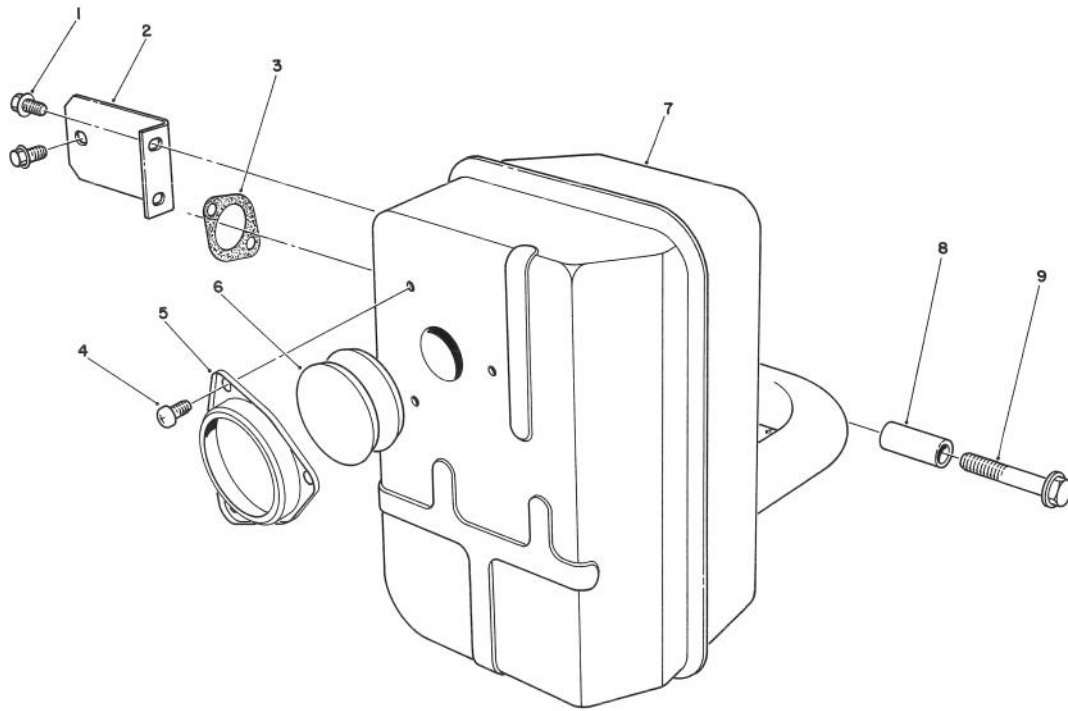


T-0516

### AIR CLEANER ASSEMBLY

Ref. No.	Part No.	Description	No. Used	Ref. No.	Part No.	Description	No. Used
1	11012-2192	Cap - Air Cleaner	1	4	11011-2174	Case - Air Cleaner	1
2	11013-2020	Element	1	*	11010-2291	Air Cleaner Assembly	1
3	11013-2021	Element	1				

\*Not Illustrated



T-0517

## MUFFLER ASSEMBLY

Ref. No.	Part No.	Description	No. Used
1	130G0812	Bolt	4
2	11044-2069-9Y	Bracket	1
3	11009-2378	Gasket	1
4	92009-2166	Screw	3
5	11012-2165-9Y	Cap	1

Ref. No.	Part No.	Description	No. Used
6	18077-2052	Spark Arrestor	2
7	49069-2190-9Y	Muffler Assembly	1
8	92027-2081	Collar	2
9	130G0845	Bolt	2

# TORO PART NUMBER INDEX

3315-526

Part No.	Description	Pg. No.	Ref. No.	Qty.	Part No.	Description	Pg. No.	Ref. No.	Qty.
5-1336	Key	3	7	1	71-3040	Replacement Axle Kit	2	*	1
7-5461	Spacer	5	5	1	72-2190	Mount - Shift Lever	5	4	1
10-8110	Washer - Flat	5	29A/R		74-0040	Spacer - Pivot Idler	1	19	4
26-9670	Belt - Traction	5	39	1	74-0050	Sheave - Lower Half	3	5	1
29-5560	Switch - Off/On	6	27	1	74-0060	Sheave - Upper Half	3	6	1
37-7600	Bridge - Rectifier	6	34	1	74-0220	Idler - Bracket L.H.	1	8	1
44-8160	Washer - Clutch	3	21	1	74-0230	Idler - Bracket R.H.	1	*	2
44-8310	Ring - Retaining	4	3	2	74-0280	Frame	1	24	1
44-8320	Spring	4	10	3	74-0320	Lever - Shift	5	9	1
44-8330	Spacer - Pulley Bearing	4	6	1	74-0360	Frame - Rear	2	31	1
44-8340	Collar - Bearing	4	7	1	74-0380	Control - Pivot	6	24	1
44-8360	Field Coil, Rotor & Bearing	4	4	1	74-0470	Rod - Pivot	6	21	1
47-1970	Grip - Engagement	5	8	1	74-0480	Pulley - Drive	5	17	2
47-2982	Hose - Fuel	1	3	1	74-0490	Decal - Fuel Shut Off	2	30	1
47-2982	Hose - Gas	3	12	1	74-0510	Valve - Fuel	2	32	1
51-4160	Pulley - Wheel	5	30	4	74-0521	Fitting - Rod	1	10	2
51-4170	Spacer - Pulley	5	31	8	74-0610	Transmission	5	3	1
51-4180	Drum - Brake	5	32	2	74-0720	Tube - Manual	6	2	1
51-4190	Pulley - Driven	5	40	1	74-0740	Control - Throttle	6	19	1
51-4220	Guard - Coupler	5	43	2	82-2180	Panel - Control	6	3	1
51-4230	Washer - Wheel	5	37	2	82-2190	Switch - Bail	6	35	1
51-4240	Shaft - Extension R.H.	5	14	1	82-2240	Wire Harness	7	1	1
51-4250	Shaft - Extension L.H.	5	*	1	82-2280	Decal - Reverse Handle	6	26	1
51-4260	Coupler	5	45	2	82-2290	Decal - Control Bar	6	12	1
51-4270	Bearing - Shaft Extension	5	12	2	82-2300	Switch - Clutch	6	20	1
51-4290	Belt - Drive	5	18	2	82-2370	Decal - Fuel Tank	2	37	1
51-4370	Spring - Torsion R.H.	1	*	1	82-3820	Boot - Switch	6	17	1
51-4380	Spring - Torsion L.H.	1	17	1	82-7631	Rod - Control	6	5	2
51-4450	Screw - Leveler	1	18	2	82-7680	Bail Assembly	6	11	1
51-4480	Idler - Wheel	1	15	2	82-7690	Bar - Control	6	15	1
51-4490	Spacer - Idler Wheel	1	16	2	82-7730	Decal - Proline	6	4	1
51-4540	Retainer - Clutch	3	8	1	82-7750	Decal - Ground Speed	2	29	1
51-4580	Rod - Brake	5	19	2	82-8440	Tank - Fuel	2	34	1
51-4600	Brake Arm R.H.	5	*	1	86-7910	Module - Interlock	6	40	1
51-4610	Brake Arm L.H.	5	20	1	86-7910	Module - Interlock	7	2	1
51-4650	Link - Brake	5	22	2	92-1746	Bearing	5	27	4
51-4660	Plate - Brake - Link	5	35	2	218-461	Nut	6	18	1
51-4700	Brake Band Assembly	5	33	2	218-595	Connector - Body	6	44	1
51-4810	Pulley - Idler	1	23	1	231-111	Tire	5	23	2
51-4850	Lever - Parking Brake	6	6	1	232-27	Valve Stem	5	25	2
52-2010	Decal - Parking Brake	6	7	1	237-7	"O"Ring	2	33	1
52-2890	Bushing	2	35	2	237-124	Grommet	1	21	1
54-0230	Field Assembly	4	1	1	237-141	Grommet - Rubber	6	8	2
54-2750	V-Belt - Deck Drive	3	3	1	242-80	Rim	5	24	2
54-3200	Clutch Brake Assembly	3	4	1	2412-98	Clamp - Fuel Line	3	11	2
55-3570	Cap - Fuel Tank	1	1	1	2412-98	Clamp - Fuel line	1	2	1
55-7410	Armature & Pulley Assembly	4	5	1	2412-108	Clamp - Hose	3	22	1
56-6360	Fuel - Filter	3	10	1	2412-120	R-Clamp	6	36	2
57-5811	Panel - Bottom	6	28	1	251-291	Bearing - Pulley	4	8	1
57-6360	Screw - Hex. Hd. Cap	3	19	1	251-292	Bearing - Field	4	2	1
57-6370	Screw - Hex. Hd. Cap	3	15	1	283-6	Pin - Clevis	1	9	4
57-6380	Screw - Hex. Hd. Cap	3	18	3	302-5	Fitting - Grease	5	44	2
57-6390	Nut	3	13	2	302-11	Grease Fitting	5	28	2
63-7590	Relay	7	3	1	321-2	Screw - Hex Hd. Cap	6	42	2
63-7590	Relay	6	41	1	321-4	Screw - Hex. Hd. Cap	5	13	4
63-8360	Key	6	16	2	322-2	Screw - Hex. Hd. Cap	5	1	4
65-3090	Decal - Instruction	6	38	1	322-4	Screw Hex. Hd. Cap	1	26	4
66-7400	Plate - Control	2	28	1	322-7	Screw - Hex. Hd. Cap	5	34	8
67-6370	Bracket - Support R.H.	1	*	1	323-6	Screw - Hex Hd. Cap	1	13	6
67-6380	Bracket - Support L.H.	1	11	1	323-9	Screw - Hex. Hd. Cap	1	22	1
67-6440	Handle - Upper	6	1	1	323-16	Screw - Hex Hd. Cap	1	12	2
68-9690	Fitting - Rod	1	6	2	329-10	Screw - Hex. Hd. Cap	5	7	1
71-1280	Decal - Danger	6	39	1	3234-11	Screw - Hex Hd. Cap	6	31	4

\*Not Illustrated

AL-925648

Litho in U.S.A.

# TORO PART NUMBER INDEX (Cont.)

Part No.	Description	Pg. Ref. No. No. Qty.	Part No.	Description	Pg. Ref. No. No. Qty.
3241-5	Screw - Set	5 38 1	3296-23	Nut - Lock	1 14 2
3245-3	Screw - Set Socket Hd.	5 16 2	3296-39	Nut - Lock	1 20 8
3253-4	Washer - Lock	3 17 3	3296-42	Nut - Hex	6 43 2
3253-4	Washer - Lock	1 27 4	3296-42	Nut - Lock	5 10 4
3253-4	Washer - Lock	5 2 12	32103-25	Wing Nut	1 4 2
3253-22	Washer - Lock	3 20 1	32104-76	Screw - Self Tapping	6 37 4
3254-5	Washer - Lock	6 25 1	32105-1	Screw - Hex. Hd. Machine	6 14 1
3255-8	Washer - External Tooth	3 14 1	32105-13	Screw - Machine	6 29 1
3256-23	Washer - Flat	1 5 10	32105-14	Screw - Hex. Hd. Machine	6 23 4
3256-23	Washer - Flat	3 16 3	32120-64	Ring - Retaining	5 11 3
3256-24	Washer	2 36 1	32128-21	Nut - Hex. Flange	6 32 4
3257-5	Key - Woodruff	5 15 3	32128-21	Nut - Hex. Flange	1 25 1
3290-307	Pin - Cotter	1 7 4	32151-40	Ring - Retaining	5 21 2
3290-307	Pin - Cotter	6 13 2	32151-56	Ring - Retaining	5 41 2
3290-307	Pin - Cotter	5 42 2	32151-72	Ring - Retaining	5 36 4
3290-378	Cable Tie	6 30 2	32151-80	Ring - Push On	6 22 2
3296-2	Nut - Lock	6 10 6	32151-91	Ring - Retaining	5 26 2
3296-5	Nut - Lock	4 9 3			

## TABLE OF CONTENTS

Description	Page	Description	Page
Frame Assembly .....	1	Numeric Index .....	19
Engine & Clutch Assembly .....	3		
Clutch Assembly .....	4	Optional Equipment	
Axle Assemble .....	5	36" Cutting Unit .....	Model No. 30136
Handle Assembly .....	6	37" Cutting Unit .....	Model No. 30737
Electric Schematic .....	7	44" Cutting Unit .....	Model No. 30144
Transmission, Peerless .....	8	48" Cutting Unit .....	Model No. 30148
Engine Kawasaki		52" Cutting Unit .....	Model No. 30152
Engine Assembly .....	9	62" Cutting Unit .....	Model No. 30162
Crankcase Assembly .....	10	Standard Sulky .....	Model No. 30122
Governor .....	12	Steerable Sulky .....	Model No. 30123
Recoil & Flywheel .....	13	Kits	
Recoil Assembly .....	14	Bagging For 36" Deck .....	Model No. 30125
Air Cleaner & Carburetor .....	15	Bagging For 37" Deck .....	Model No. 30129
Carburetor Assembly .....	16	Bagging For 44 & 52" Deck .....	Model No. 30128
Air Cleaner Assembly .....	17	Height of Cut 36 & 37" Decks ...	Part No. 84-5010
Muffler Assembly .....	18	Front Weight .....	Part No. 80-3350