



Workman[®] e2065 Utility Vehicle

Model No. 07288TC - 280000001 and up.

Parts Catalog

Ordering Replacement Parts

To order replacement parts, please supply the part number, the quantity, and the description of each part desired.

Understanding Reference Numbers

Each Identified part in an illustration has a reference number. The reference number for a part also appears in the parts list, along with other information about the part.

This catalog uses two special reference number formats, one to indicate parts in a service assembly and another to indicate the quantity of a given part in an illustration.

Service Assembly Reference Numbers

Parts in service assemblies have reference numbers in the form a:b. The a represents the reference number of the entire service assembly and the b represents a sequential number unique to each part within the service assembly.

For example, a wheel assembly might be identified by reference number 6, the tire by 6:1, the valve by 6:2, and the wheel by 6:3. When you order the assembly identified by reference number 6, you receive all parts identified by reference numbers 6:1, 6:2, and 6:3. However, you may also order any part individually. Reference numbers of this type appear in illustrations and in part lists.

Reference Numbers Indicating Quantity

In an illustration, if a reference number indicates more than one part, the reference number has the form nX y. The n represents the quantity of the part, the X is the multiplication symbol, and the y represents the reference number.

For example, in an illustration, the reference number 2X 37 means that two of the parts identified by reference number 37 are indicated.

Contents

Description	Page	Description	Page
Dash Panel Assembly 3	Controller Assembly 13
Solenoid Assembly No. 104-7135 5	Battery and Transaxle Assembly 14
Pedal Assembly 6	Electric Motor Assembly No. 104-7335 15
Hydraulic Brake Assembly 7	Electric Transaxle Assembly No. 112-3085 16
Master Cylinder Assembly No. 104-6782 8	Left Hand Brake Assembly No. 104-6807 17
Frame Assembly 9	Right Hand Brake Assembly No. 104-6806 18
Seat Base Assembly 10	Upper Steering Assembly 19
Offboard 48 Volt Charger Assembly No. 112-2914 11	Steering Gearbox Assembly No. 99-7660 20
Front Tire and Steering Assembly 12	Box and Tailgate Installation Assembly 21
		Box and Tailgate Assembly 22
		Attachments and Accessories List 23

Part Description Abbreviations

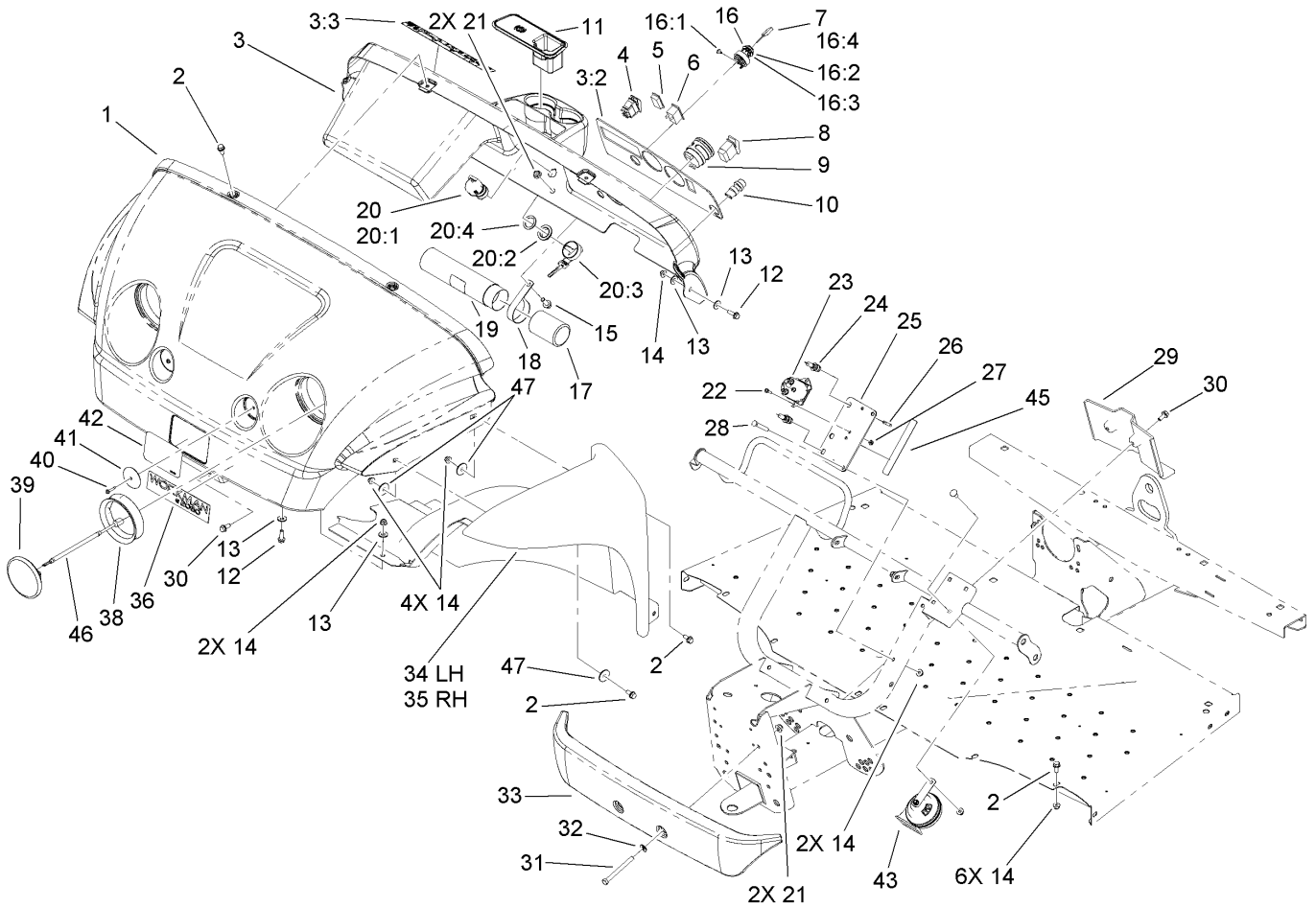
Part descriptions in this catalog may include the following abbreviations.

AR. as required	HYD. hydraulic
ASM. assembly	LH. left hand
BBC. blade brake clutch	NI. nylon insert
CARR. carriage	NPTF. national pipe thread fine
DEG. degrees	PFH. phillips flat head
EXT. external	PPH. phillips pan head
FH. flat head	PPHTF. phillips pan head thread forming
GA. gauge	PRH. phillips round head
HD. heavy-duty	PTH. phillips truss head
HF. hex flange	PTO. power-take-off
HH. hex head	RH. right hand
HHF. hex head flange	ROPS. roll-over protection system
HHFTF. hex head flange thread forming	SFH. slotted fillister head
HJ. hex jam	SHH. slotted hex head
HLH. hex lag head	SHWH. slotted hex washer head
HOC. height-of-cut	SPH. slotted pan head
HSBH. hex socket button head	SQH. square head
HSFH. hex socket flat head	SRH. slotted round head
HSH. hex socket head	STD. standard
HWH. hex washer head	TAP. self tapping
HWHTF. hex washer head thread forming	TTH. torx truss head

Footnotes

❶ Not illustrated

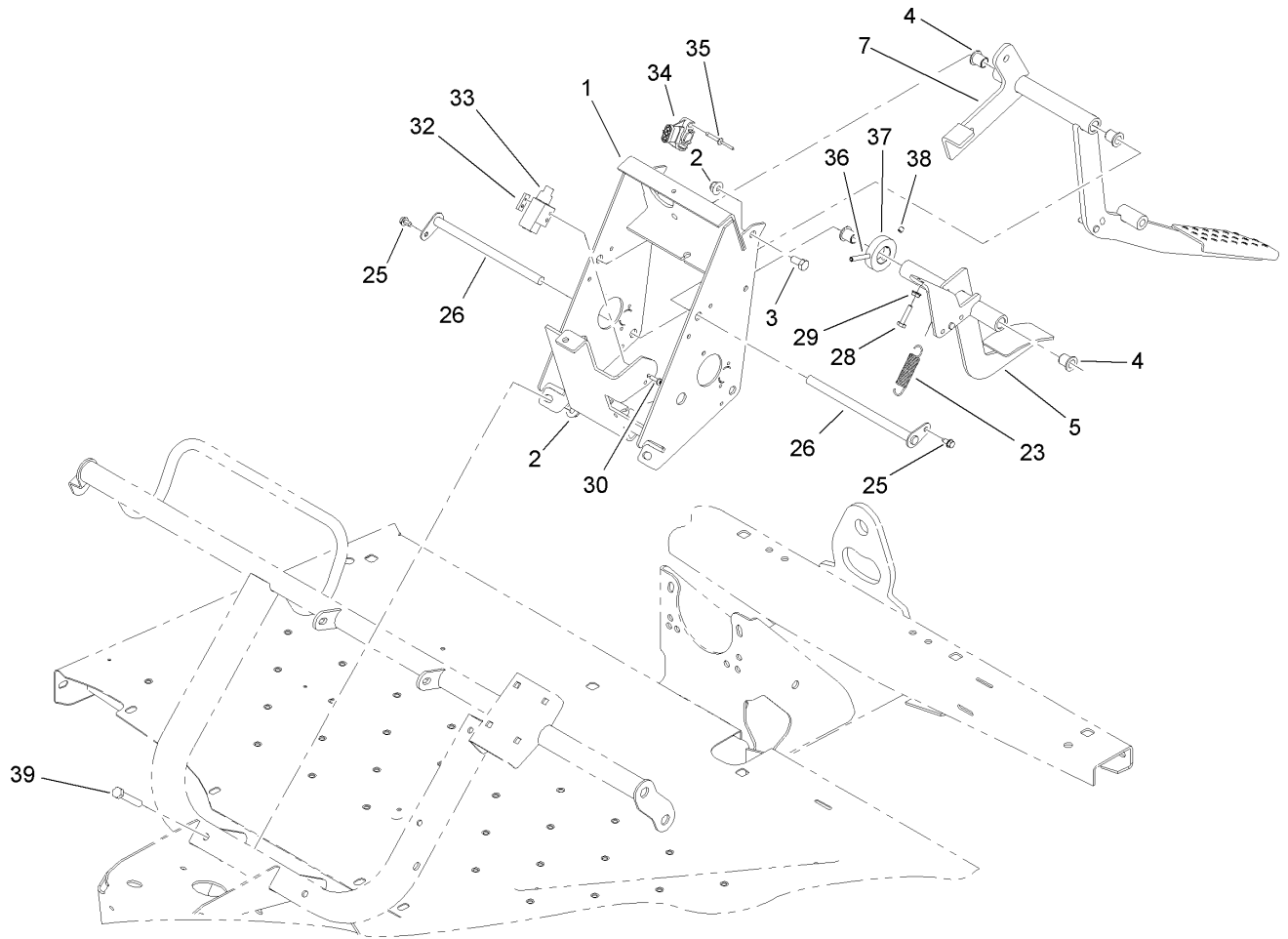
❷ Not serviced separately



Dash Panel Assembly

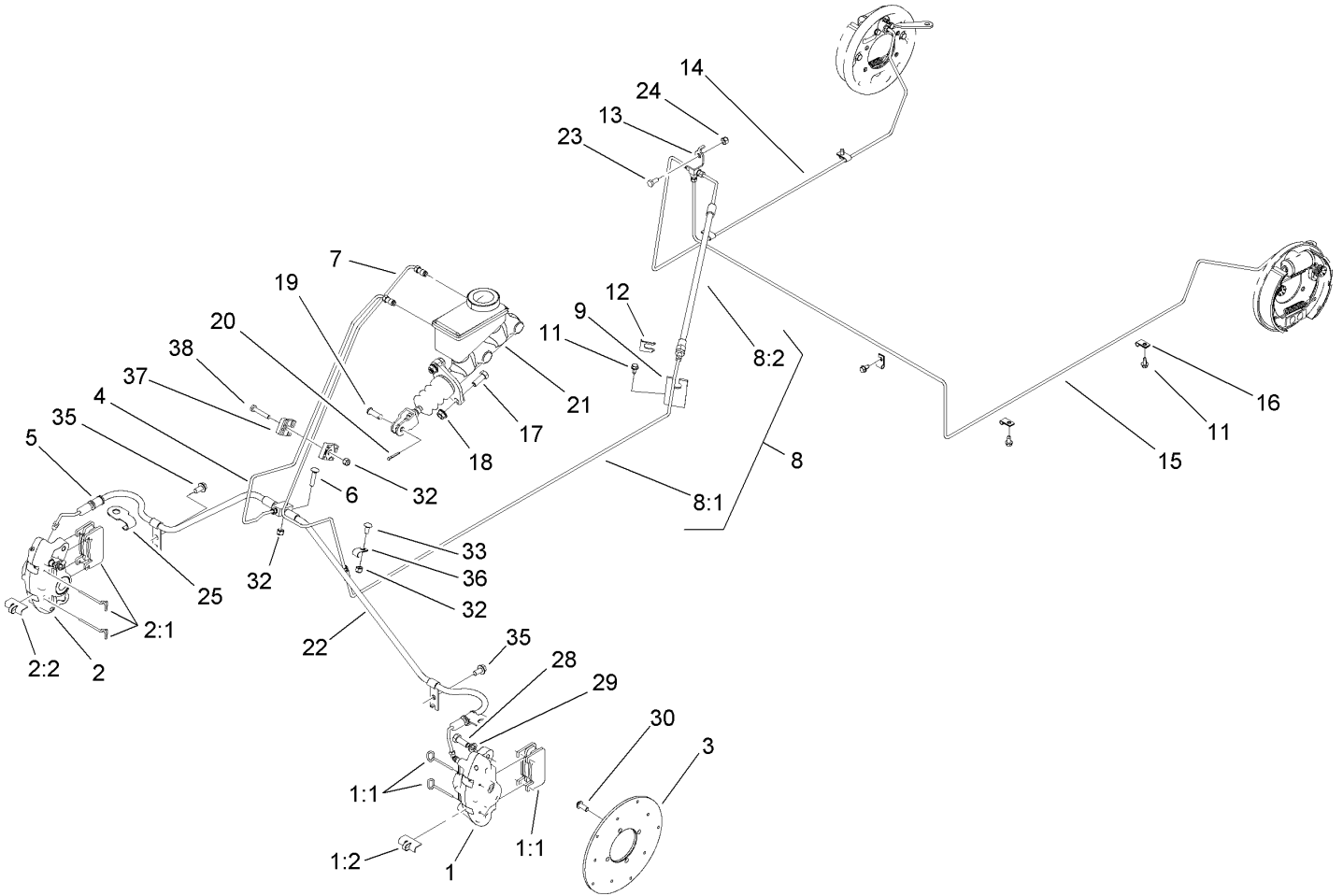
Ref	Part No.	Qty.	Description
1	104-7003	1	Hood
2	3234-5	14	Screw-HHF
3	112-3078	1	Dash ASM
3:2	104-7214	1	Decal-Dash, Electric
3:3	104-7215	1	Decal-Danger
4	107-0255	1	Switch
5	99-7420	2	Plug-Hole
6	104-7129	1	Light-Indicator
7	99-7418	1	Key-Ignition
8	107-0747	1	Switch-Rocker
9	107-0260	1	Guage-Hour/Battery Level, 48 Volt
10	18-2830	1	Button-Horn
11	104-6930	1	Plug-Rubber
12	3234-17	4	Screw-HHF
13	3256-3	8	Washer-Flat
14	104-8300	16	Nut-Flange, NI
15	3234-11	2	Screw-HHF
16	107-0348	1	Switch-Key, 48V
16:1	3250-28	3	Screw
16:2	108-8659	1	Washer-Backup
16:3	108-8660	1	Nut-Mounting
16:4	108-6994	1	Key-Ignition
17	104-7048	1	Cap-Housing
18	2412-133	2	R-Clamp

Ref	Part No.	Qty.	Description
19	104-7050	1	Housing-Manual
20	110-2580	1	Switch-Key, Supervisor
20:1		1	Switch-Key
20:2	108-8660	1	Nut-Mounting
20:3	110-5221	1	Set-Key, Supervisor
20:4	108-8659	1	Washer-Backup
21	104-8301	4	Nut-Flange, NI
22	32105-13	2	Screw-HWH
23	104-7135	1	Solenoid
24	218-489	2	Holder-Fuse
25	104-7252	1	Mount-Solenoid
26	98-8876	2	Fuse-10 Amp
27	32149-7	2	Nut-Keps
28	322-11	2	Screw-HH
29	104-7075	1	Cover-Channel
30	104-7206	4	Screw-HHF
31	323-42	2	Screw-HH
32	3256-24	2	Washer-Flat
33	99-7733	1	Bumper-Plastic
34	104-7076	1	LH Fender ASM
35	104-7077	1	RH Fender ASM
36	112-3143	1	Decal
38	99-7311	2	Mount-Headlight
39	104-7312	2	Headlight



Pedal Assembly

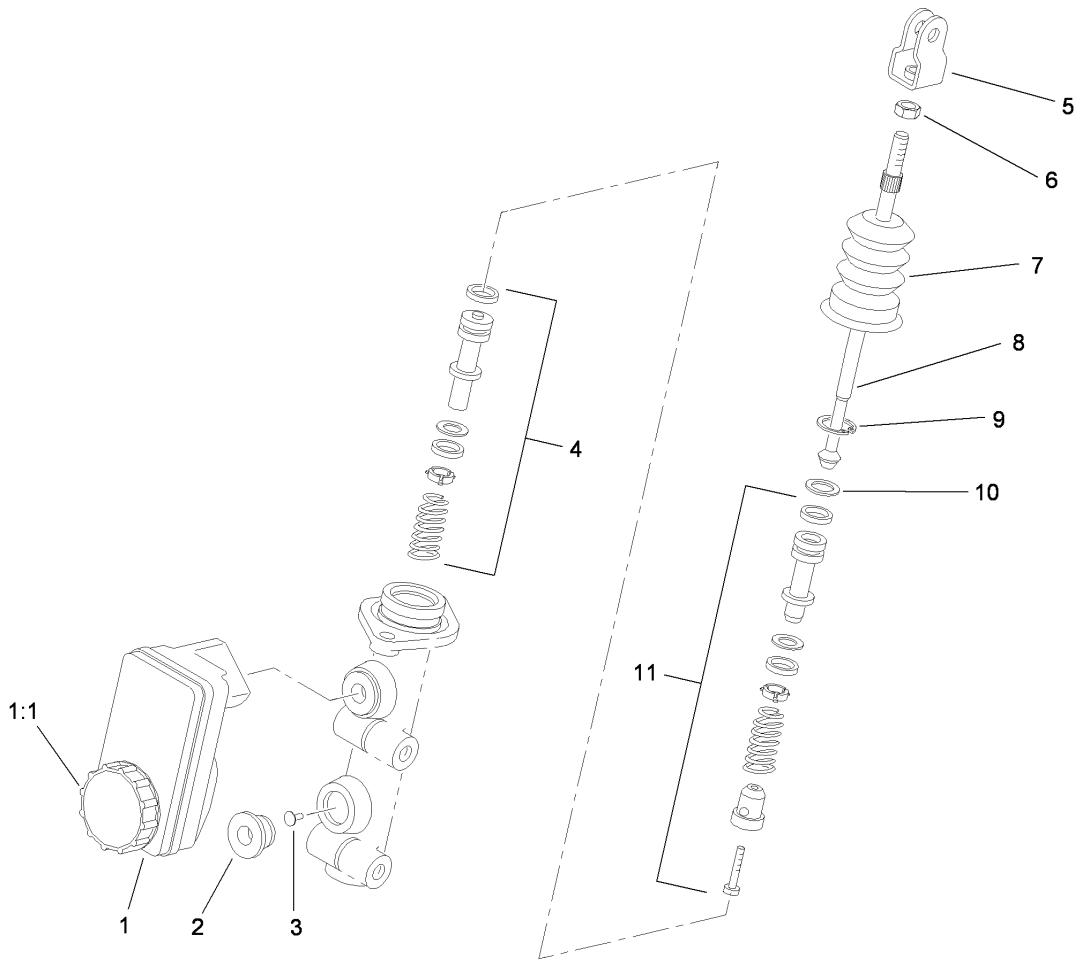
Ref	Part No.	Qty.	Description
1	112-3048-03	1	Pedal Support Frame ASM
2	104-8301	4	Nut-Flange, NI
3	323-4	2	Screw-HH
4	256-155	4	Bushing-Flange
5	110-2607-03	1	Pedal-Throttle
7	104-7170-03	1	Pedal-Brake
23	104-6415	1	Spring-Return, Pedal
25	12-3270	2	Screw
26	104-7164	2	Pivot-Pedal
28	321-7	2	Screw-HH
29	32149-2	2	Nut-Keps
30	104-7221	2	Screw-PPH
32	1-633181	1	Plate-Tapped
33	99-7407	1	Switch
34	112-3046	1	Sensor-Position, Rotary
35	107-0386	2	Rivet-Blind
36	32121-78	1	Pin-Roll
37	104-7301	1	Collar
38	3245-32	2	Screw-HSH
39	323-11	2	Screw-HH



Hydraulic Brake Assembly

Ref	Part No.	Qty.	Description
1	112-3150	1	Caliper-LH
1:1	107-0708	1	Friction Pad And Pin Kit
1:2	112-3152	1	Spring-Rattle, Anti
2	112-3151	1	Caliper-RH
2:1	107-0708	1	Friction Pad And Pin Kit
2:2	112-3152	1	Spring-Rattle, Anti
3	104-6891	2	Rotor
4	104-6798	1	Tube-Brake, Front
5	104-7256	1	Front Hose ASM
6	3229-3	1	Screw-CARR
7	104-6793	1	Tube-Brake, Rear
8		1	Rear Brake Hose ASM
8:1	104-6794	1	Tube-Brake, Rear
8:2	104-6795	1	Hose-Brake, Rear
9	104-6799	1	Bracket-Hose, Brake
11	12-3270	6	Screw
12	104-7092	1	Clip
13	87-3560	1	Tee
14	112-3019	1	Tube-Brake, Rear (RH)
15	112-3020	1	Tube-Brake, Rear (LH)
16	2412-72	5	Clip-Closed, Insulated
17	323-6	2	Screw-HH
18	3290-357	2	Nut-HHF, Whiz
19	283-2	1	Pin-Clevis

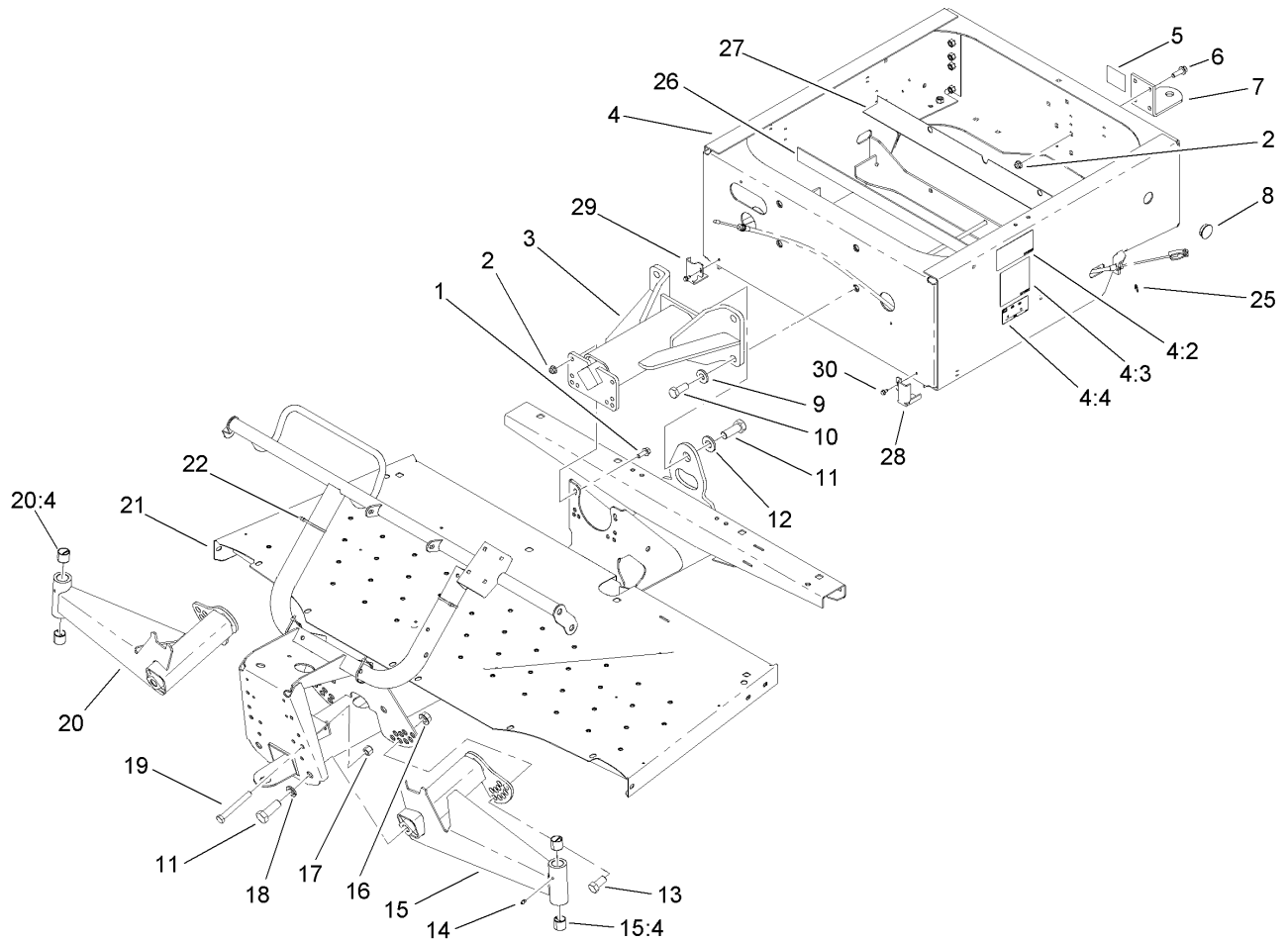
Ref	Part No.	Qty.	Description
20	3272-10	1	Pin-Cotter
21	104-6782	1	Cylinder-Master
22	87-3570	1	Union
24	3296-42	1	Nut-Lock, NI
23	321-3	1	Screw-HH
25	104-7073	2	Bracket-Hose
28	323-6	4	Screw-HH
29	3253-21	4	Washer-Lock
30	3274-55	8	Screw-HSBH
32	3296-42	3	Nut-Lock, NI
33	3229-11	1	Screw-CARR
35	32144-14	2	Screw-HWHTF
36	2412-89	1	Clamp
37	87-7660	2	Clamp-Tube
38	321-9	1	Screw-HH



Master Cylinder Assembly No. 104-6782

Ref	Part No.	Qty.	Description
1	104-6845	1	Reservoir ASM
1:1	92-4112	1	Cap ASM
2	93-8971	2	Seal-Port, Flange
3	92-4103	1	Pin-Stop
4	92-4102	1	Secondary Piston ASM
5	92-4110	1	Clevis
6	21-0360	1	Nut-Hex
7	94-5209	1	Cover-Dust
8	94-5210	1	Rod-Push
9	92-4109	1	Ring-Snap
10	92-4108	1	Retainer-Washer
11	92-4101	1	Primary Piston ASM

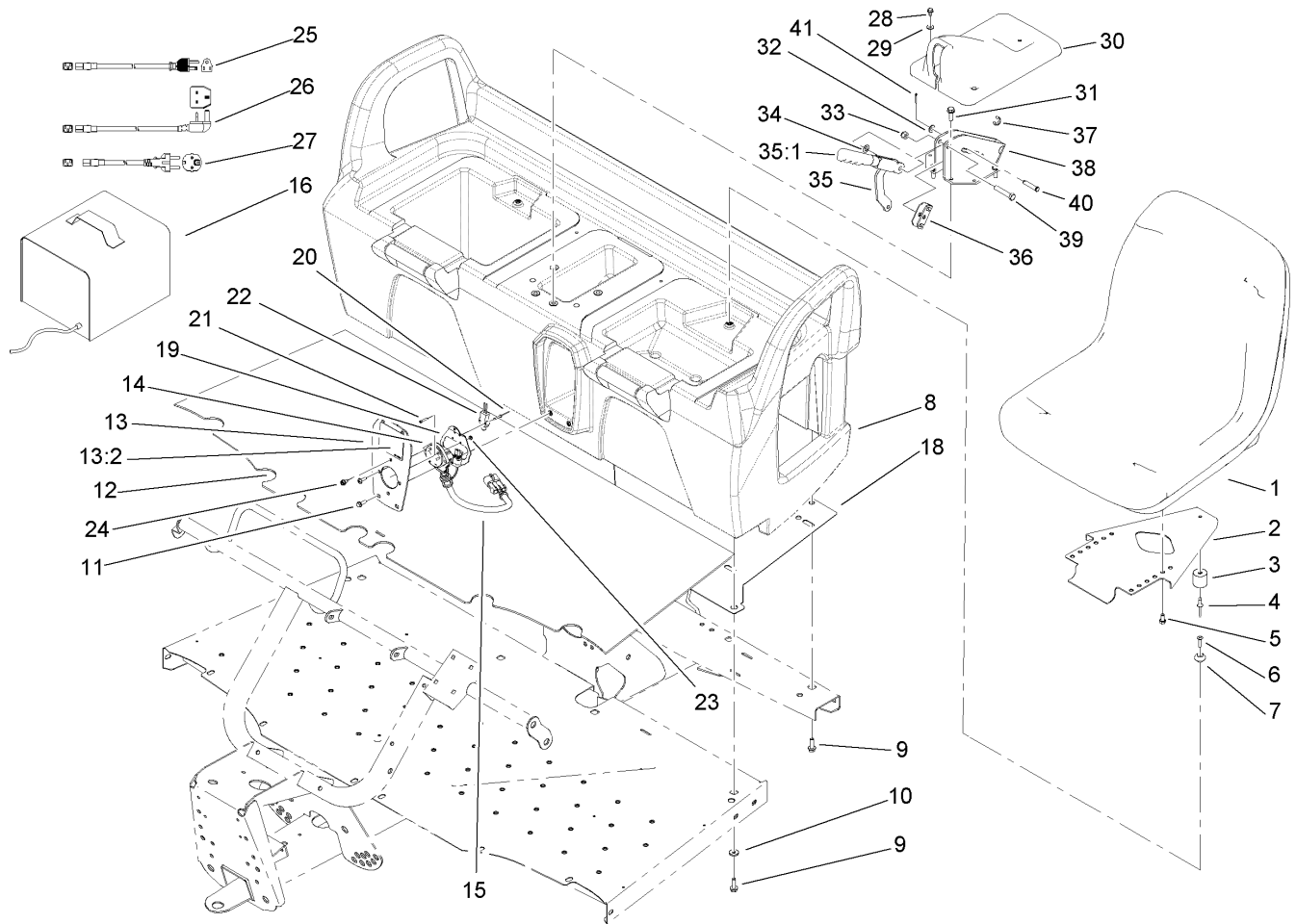
--	--	--	--



Frame Assembly

Ref	Part No.	Qty.	Description
1	3234-11	4	Screw-HHF
2	104-8301	8	Nut-Flange, NI
3	99-7700	1	Pivot Yoke ASM
4	112-3018	1	Rear Frame ASM
4:2	104-7207	2	Decal-Electric
4:3	107-0257	1	Decal-Polarity
4:4	112-3049	1	Decal-Capacity, Workman (Ce)
5	99-7350	1	Decal-Rating, Hitch (Light Duty)
6	3234-24	4	Screw-HHF
7	99-7654-03	1	Hitch-Duty, Light
8	94-1402	1	Plug-Hole
9	99-7667	4	Washer-Flat
10	327-4	4	Screw-HH
11	328-24	5	Screw-HH
12	87-3060	1	Washer-Hardened
13	3214-2	2	Screw-HH
14	302-5	2	Fitting-Grease
15	99-7685	1	LH A-Arm ASM
15:4	3-0348	2	Bushing
16	32128-54	2	Nut-HF
17	3296-23	2	Nut-Lock, NI
18	3254-7	4	Washer-Lock, Int
19	325-17	2	Screw-HH
20	99-7684	1	RH A-Arm ASM

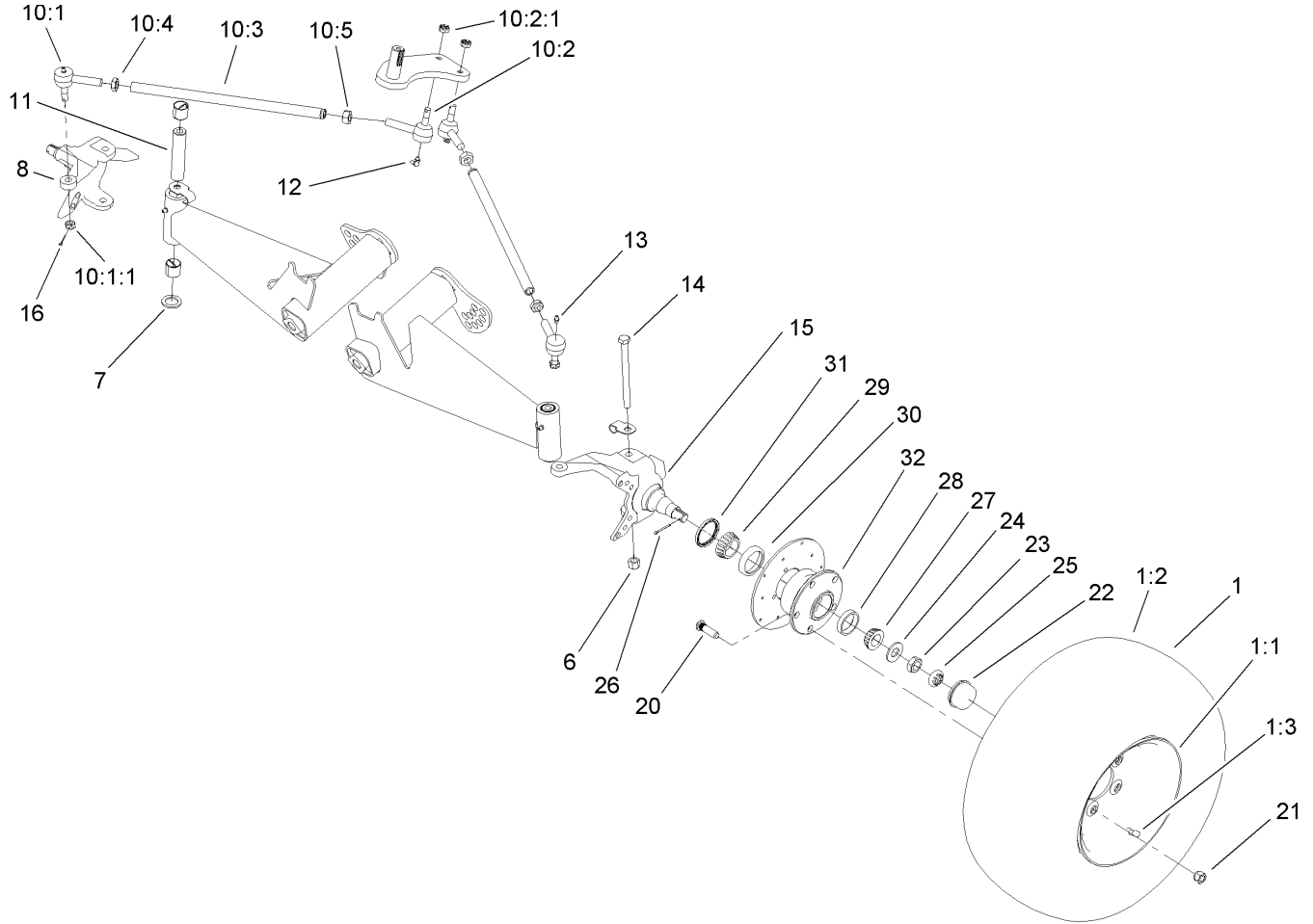
Ref	Part No.	Qty.	Description
20:4	3-0348	2	Bushing
21	104-7197-03	1	Front Frame ASM
22	3290-379	15	Tie-Cable
25	32120-47	2	Ring-Retaining, External
26	107-0252	1	Pad-Battery
27	107-0267	4	Isolator-Battery
28	112-2951	1	Guard-Brake Line, LH
29	112-2952	1	Guard-Brake Line, RH
30	12-3270	2	Screw



Seat Base Assembly

Ref	Part No.	Qty.	Description
1	112-2923	2	Seat ASM
2	99-7829	2	Bracket-Seat
3	99-7830	2	Rubber Receptacle ASM
4	3290-412	2	Rivet
5	33114-016	8	Screw-HH
6	32108-5	2	Screw-FH
7	99-7833	2	Post-Holding
8	104-6847	1	Seat Base ASM
9	3234-17	8	Screw-HHF
10	88-7200	8	Washer-Flat
11	32105-15	4	Screw
12	104-6590	1	Mat-Floor
13	107-0370	1	Plate-Receptacle
13:2	107-0295	1	Decal-Charger
14	107-0288	1	Receptacle-Charger
15	115-1913	1	Harness-Wire, Charger
16	112-2914	1	Charger-48V, Offboard
18	107-0359-03	1	Tray-Seatbase
19	107-0716	1	Bracket-Mount, Socket
20	107-0333	2	Rivet-Pop
21	107-0334	2	Screw-HSH
22	99-3410	1	Switch
23	3296-9	2	Nut-Lock
24	32104-17	4	Screw-HWH

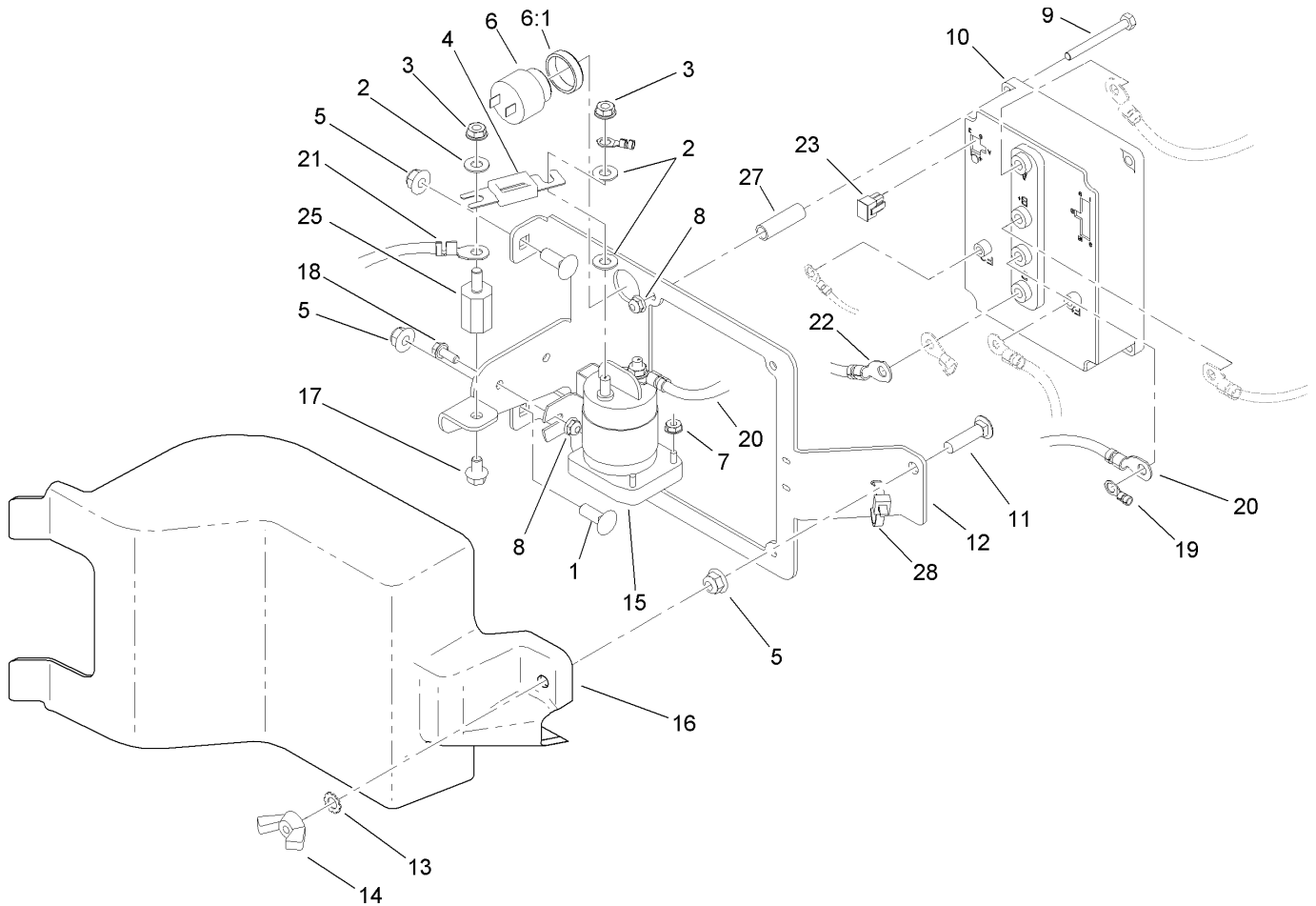
Ref	Part No.	Qty.	Description
25	107-0384	1	Powercord-Ac, Canada
26	107-0383	1	Powercord-Ac, U.K.
27	107-0382	1	Powercord-Ac, Europe
28	12-3270	2	Screw
29	3256-1	2	Washer-Flat
30	104-7014	1	Cover-Brake, Parking
31	3234-17	4	Screw-HHF
32	3256-23	1	Washer-Flat
33	3296-39	1	Nut-Lock, NI
34	3290-477	1	Washer-Curved
35	104-6842	1	Lever-Brake, Park
35:1	106-7972	1	Grip-Handle
36	87-3480	1	Bracket-Equalizer, Cable
37	32120-47	2	Ring-Retaining, External
38	104-6844-03	1	Support-Brake, Park
39	323-10	1	Screw-HH
40	94-3829	1	Pin-Clevis
41	3272-6	1	Pin-Cotter



Front Tire and Steering Assembly

Ref	Part No.	Qty.	Description
1	104-7290	2	Tire And Wheel ASM
1:1	104-7288	1	Wheel
1:2	104-7289	1	Tire
1:3	232-27	1	Stem-Valve
6	3296-23	2	Nut-Lock, NI
7	256-115	2	Washer-Thrust
8	104-6877	1	Spindle-Disc, RH
10		2	Rod-Tie
10:1	112772	1	Joint-Ball, RH
10:1:1	915031	1	Nut
10:2	112771	1	Joint-Ball, LH
10:2:1	915031	1	Nut
10:3	99-7600-03	1	Rod-Tie
10:4	3220-11	1	Nut-Jam
10:5	3218-21	1	Nut-Jam
11	99-7499	2	Sleeve-Kingpin
12	302-60	2	Fitting-Grease, 90 DEG
13	302-5	2	Fitting-Grease
14	325-20	2	Screw-HH
15	104-6876	1	Spindle-Disc, LH
16	3272-7	4	Pin-Cotter
20	10-6830	10	Stud-Type, Drive
21	242-50	10	Nut-Lug
22	241-119	2	Cap-Dust

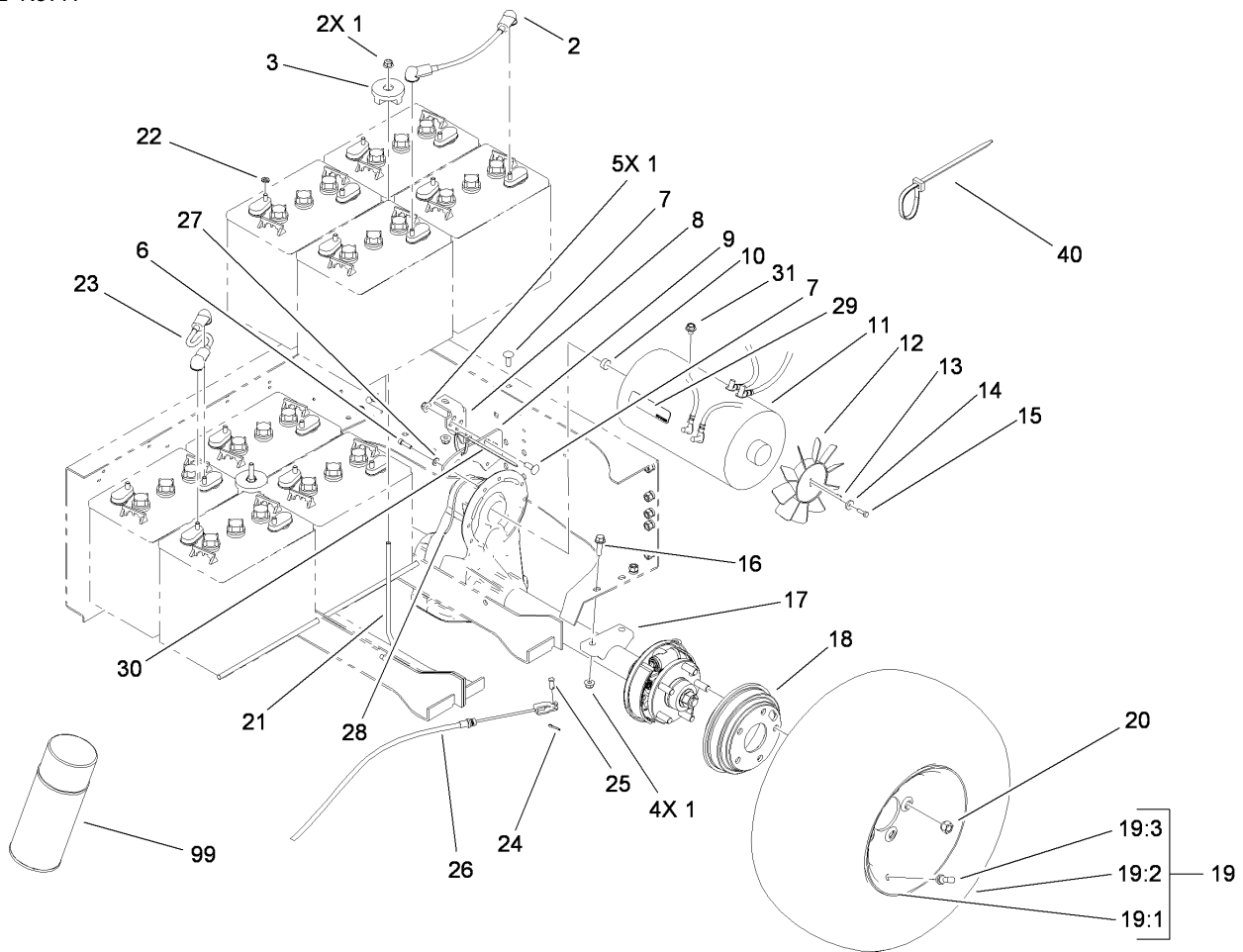
Ref	Part No.	Qty.	Description
23	3220-7	2	Nut-Jam
24	93-0309	2	Washer-Tab
25	93-0307	2	Nut-Lock, Retainer
26	3272-12	2	Pin-Cotter
27	254-94	2	Bearing-Cone, Tapered
28	254-72	2	Bearing-Cup, Tapered
29	254-106	2	Cone-Bearing, Tapered
30	254-107	2	Cup-Bearing, Tapered
31	108-7019	2	Seal-Shaft
32	104-6809	2	Hub



Controller Assembly

Ref	Part No.	Qty.	Description
1	3231-22	2	Screw-CARR
2	107-0394	3	Washer-Flat
3	107-0380	3	Nut-HHF
4	104-7320	1	Fuse
5	104-8301	3	Nut-Flange, NI
6	94-5582	1	Alarm-Audio
6:1	104-5107	1	Nut-Plastic, Knurled
7	32149-8	2	Nut-Keps
8	104-7201	6	Nut-HF
9	321-15	4	Screw-HH
10	110-2569	1	Controller-Sevcon
11	3231-4	1	Screw-CARR
12	104-7137-03	1	Mount-Controler
13	3255-9	1	Washer-Lock
14	32103-3	1	Nut-Wing
15	104-7136	1	Contacto-48V
16	104-7138	1	Cover-Controller
17	100-1719	1	Screw-Flange
18	3234-33	2	Screw-HHF
19	115-1915	1	Harness-Wire, Main
●19:1	100-4918	1	Diode
20	107-0740	1	Cable-Battery, Positive
21	107-0741	1	Cable-Battery, Positive
22	107-0742	1	Cable-Battery, Negative

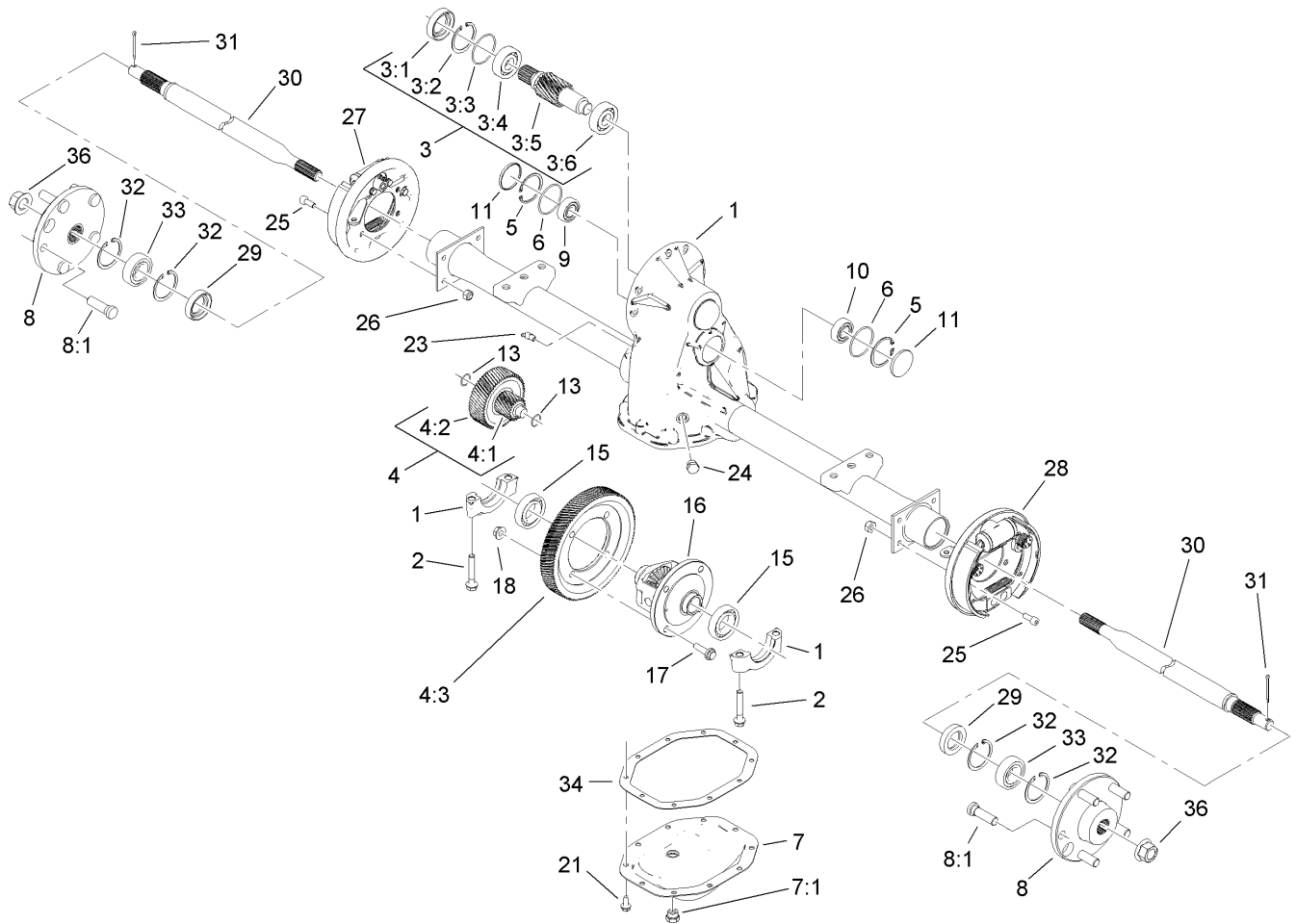
Ref	Part No.	Qty.	Description
23	32160-130	1	Connector
●24	107-0737	1	Harness-Wire, Battery Cable
25	107-0286	1	Isolator
27	107-0285	4	Spacer
28	3290-379	2	Tie-Cable



Battery and Transaxle Assembly

Ref	Part No.	Qty.	Description
1	104-8301	11	Nut-Flange, NI
2	107-0739	1	Cable-Battery, Positive
3	104-7149	2	Hold Down ASM
6	3274-26	6	Screw-HSH
7	3231-22	5	Screw-CARR
8	104-7249-03	1	Bracket-Support
9	104-7305-03	1	Plate-Mount, Transaxle
10	112-3399	1	Damper-Rubber
11	104-7335	1	Motor-Electric
12	107-0259	1	Fan-10 Blade, Clockwise
13	32121-68	2	Pin-Roll
14	73-3580	1	Washer
15	3274-8	1	Screw-HSH
16	3234-24	4	Screw-HHF
17	112-3085	1	Electric Transaxle ASM
18	104-6500	2	Drum-Brake
19	104-7290	2	Tire And Wheel ASM
19:1	104-7288	1	Wheel
19:2	104-7289	1	Tire
19:3	232-27	1	Stem-Valve
20	242-50	10	Nut-Lug
21	104-7339	2	Rod-Battery
22	107-0280	16	Washer-Lock
23	107-0738	6	Cable-Battery, Positive

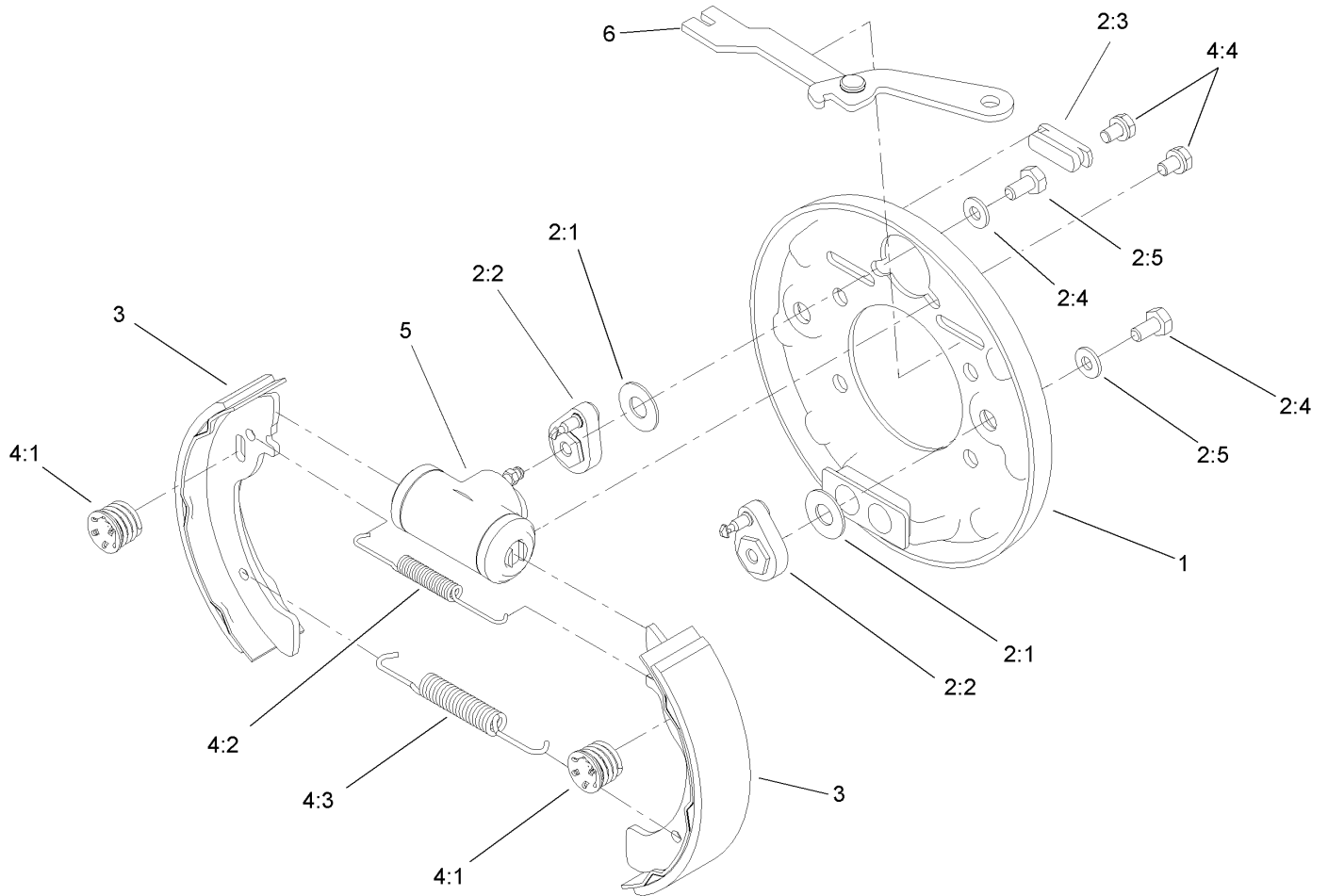
Ref	Part No.	Qty.	Description
24	3272-10	2	Pin-Cotter
25	283-62	2	Pin-Clevis
26	110-2647	2	Cable-Brake, Park
27	3256-22	6	Washer-Flat
28	110-1872	1	Hose-Fuel
29	107-0356	1	Decal-Motor
30	3290-379	12	Tie-Cable
31	107-0376	1	Screw-HSFH
40	3290-378	4	Tie-Cable
99	107-0392	1	Protection-Terminal, Aerosol



Electric Transaxle Assembly No. 112-3085

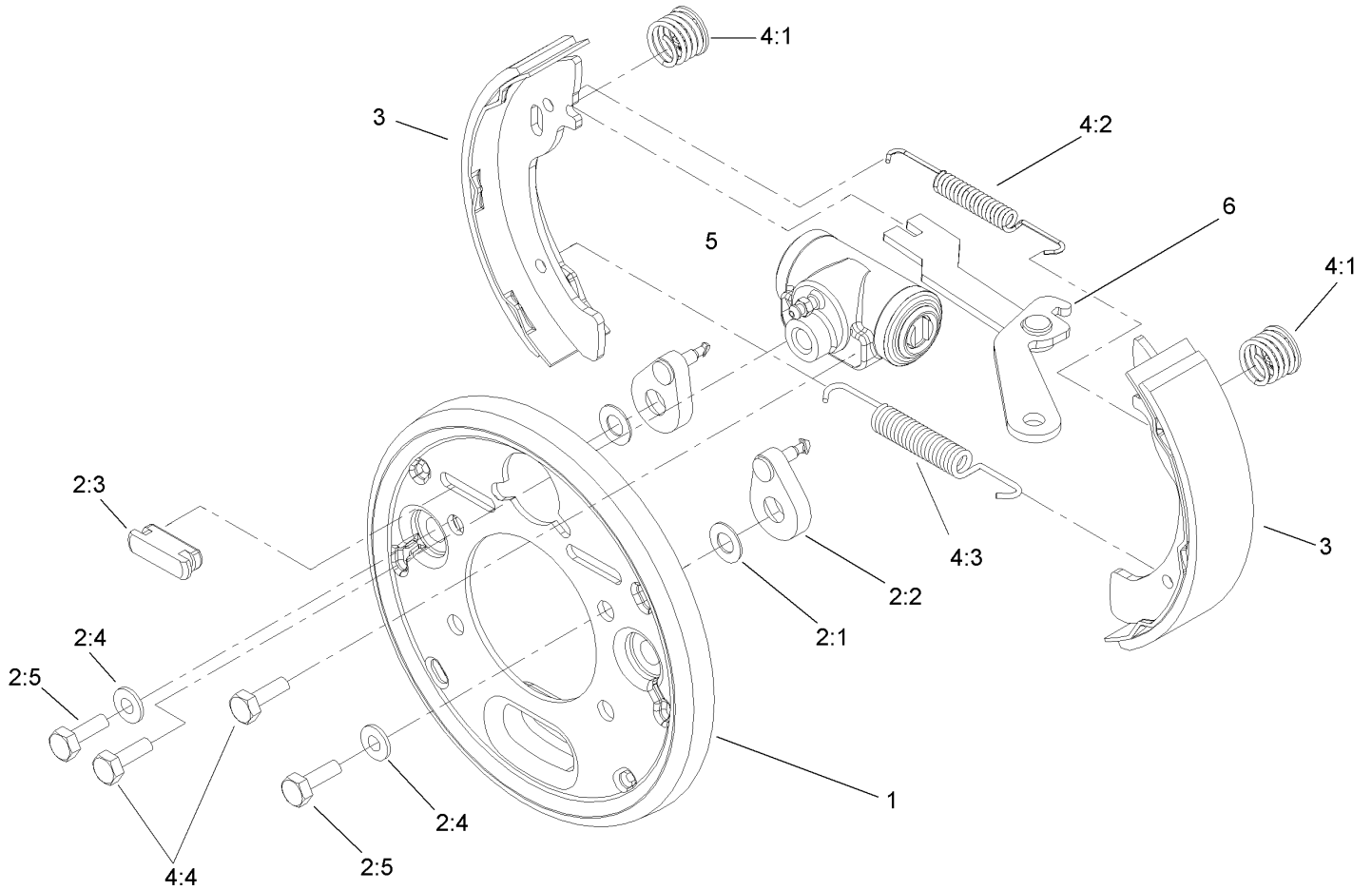
Ref	Part No.	Qty.	Description
1		1	Transaxle ASM
2	108-2401	4	Bolt-Cap, Bearing
3	115-2185	3	Input Shaft Kit
3:1	108-2403	1	Seal-Oil
3:2	108-2404	1	Ring-Retaining
3:3	108-2405	1	O-Ring
3:4		1	Bearing-Ball
3:5		1	Shaft-Input
3:6		1	Bearing-Ball
4	108-2409	1	Internal Gear Kit
4:1		1	Shaft-Input
4:2		1	Gear-Intermediate
4:3	110-2541	1	Gear-Drive, Final
5	108-2404	2	Ring-Retaining
6	108-2405	2	O-Ring
7	108-2416	1	Cover Kit
7:1	108-2415	1	Plug-HH
8	112-3136	2	Hub ASM
8:1	112-3137	1	Bolt-Wheel
9	108-2406	1	Bearing-Ball
10	108-2407	1	Bearing-Ball
11	108-2408	2	Plug-Cap, End
13	108-2410	2	O-Ring
15	108-2411	2	Bearing-Ball

Ref	Part No.	Qty.	Description
16	112-3138	1	Differential ASM
17	108-2413	4	Screw-Hex
18	108-2414	4	Nut-Lock
21	108-2427	10	Screw-Tapping
23	108-2428	1	Elbow-90 Degree
24	108-2429	1	Plug-HH
25	112-3139	8	Screw-HSH
26	108-2418	8	Nut-Lock
27	104-6807	1	LH Brake ASM
28	104-6806	1	RH Brake ASM
29	112-3140	2	Seal-Oil
30	112-3141	2	Shaft-Axle
31	3272-12	2	Pin-Cotter
32	108-2424	4	Ring-Retaining
33	108-2425	2	Bearing-Ball
34	108-3148	1	Gasket
36	112-3142	2	Nut-HF



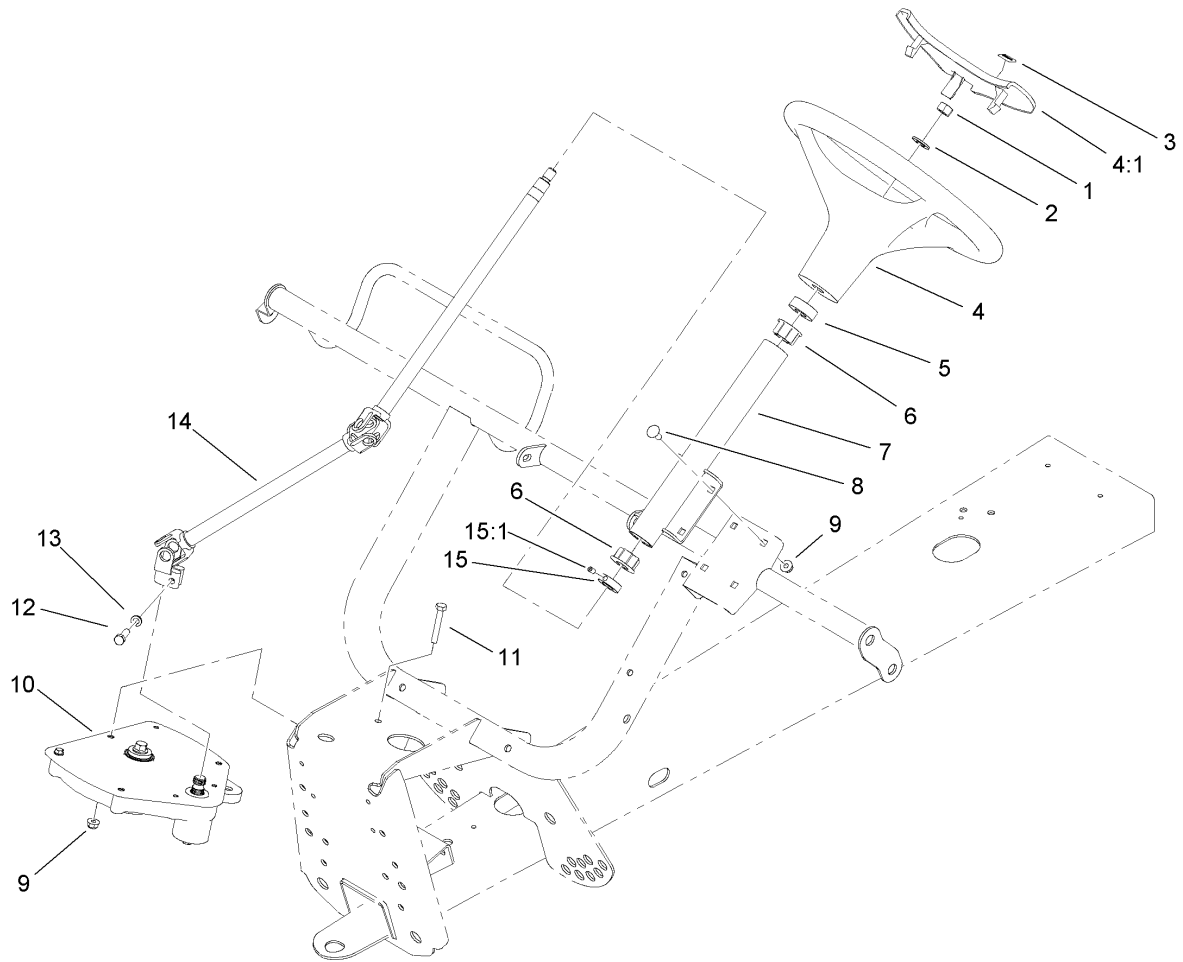
Left Hand Brake Assembly No. 104-6807

Ref	Part No.	Qty.	Description
1	100-8586	1	Backing Plate ASM
2	104-6820	1	Adjuster Kit
2:1	100-8585	2	Washer-Bellville
2:2	100-8588	2	Adjuster Lever ASM
2:3	100-8584	2	Cover-Dust
2:4		2	Screw
2:5		2	Bolt
3	104-6818	4	Shoe And Lining Kit
4	104-6819	1	Hardware Kit
4:1	100-8583	2	Shoe Hold Down Spring ASM
4:2	100-8581	2	Spring-Upper
4:3	100-8582	2	Spring-Lower
4:4		2	Bolt And Washer
5	104-6824	1	Wheel Cylinder ASM
6	104-6825	1	LH Park Brake Lever ASM



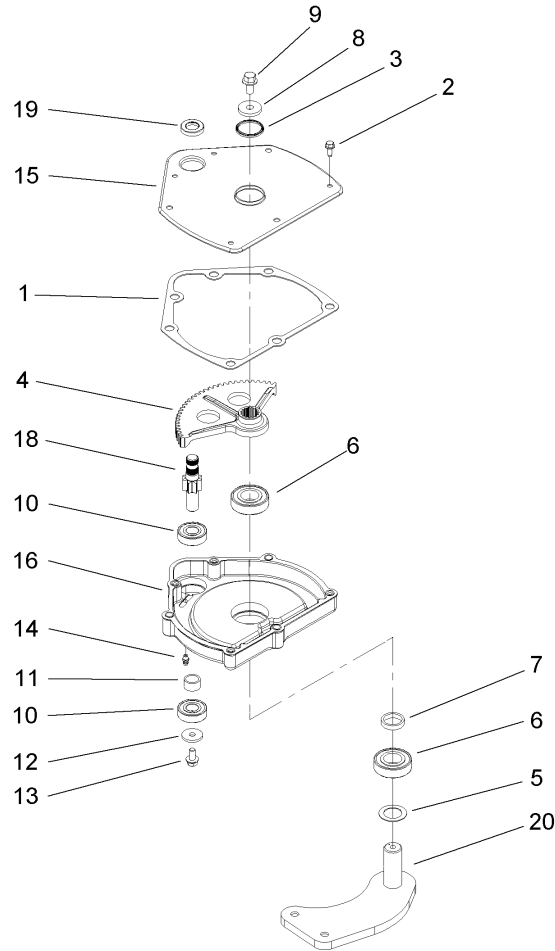
Right Hand Brake Assembly No. 104-6806

Ref	Part No.	Qty.	Description
1	100-8586	1	Backing Plate ASM
2	104-6820	1	Adjuster Kit
2:1	100-8585	2	Washer-Bellville
2:2	100-8588	2	Adjuster Lever ASM
2:3	100-8584	2	Cover-Dust
2:4		2	Screw
2:5		2	Bolt
3	104-6818	4	Shoe And Lining Kit
4	104-6819	1	Hardware Kit
4:1	100-8583	2	Shoe Hold Down Spring ASM
4:2	100-8581	2	Spring-Upper
4:3	100-8582	2	Spring-Lower
4:4		2	Bolt & Washer
5	104-6824	1	Wheel Cylinder ASM
6	104-6826	1	RH Park Brake Lever ASM



Upper Steering Assembly

Ref	Part No.	Qty.	Description
1	110-8815	1	Nut-Hex
2	3256-26	1	Washer-Flat
3	98-1459	1	Decal
4	98-1471	1	Wheel-Steering
4:1	98-1468	1	Cover-Wheel, Steering
5	21-9260	1	Cover-Dust
6	93-1146	2	Bushing-Steering, Upper
7	99-7651-03	1	Column-Steering
8	3230-1	4	Bolt-CARR
9	104-8300	7	Nut-Flange, NI
10	99-7660	1	Steering Gearbox ASM
11	322-10	3	Screw-HH
12	48-7730	1	Screw-HH
13	3253-4	1	Washer-Lock
14	99-7653	1	Shaft-Steering
15	111383	1	Collar
15:1	3245-32	1	Screw-HSH



Steering Gearbox Assembly No. 99-7660

Ref	Part No.	Qty.	Description
1	94-2135	1	Gasket
2	32144-10	4	Screw-HWH
3	103118	1	Seal
4	99-7843	1	Sector-Gear
5	3256-42	1	Washer-Flat
6	251-82	2	Bearing-Ball
7	94-2218	1	Spacer-Shaft, Output
8	104-6563	1	Washer-Stepped
9	104-7156	1	Screw-HHF
10	38-7820	2	Bearing-Ball
11	94-2217	1	Spacer-Shaft, Input
12	1-613235	1	Washer
13	98-3498	1	Screw-HH
14	302-5	1	Fitting-Grease
15	99-7656-03	1	Cover-Housing, Steering
16	99-7658	1	Housing-Steering
18	99-7650	1	Gear-Pinion
19	99-7657	1	Seal-Oil
20	99-7601-03	1	Arm-Pitman

Attachments and Accessories

For 07288TC - Workman e2065 Utility Vehicle

Product Name	Model/Part
Stand Alone Windshield Kit	07221
Rear Lift Kit	07261
Electric Bed Lift Kit	07263
Roll-Over Protection System	07276
Receiver Hitch Kit	07278
Heavy-Duty Bumper Kit	07282
12V Converter Kit	07289
Stake Side Kit	07290
Cab	07291
Folding Windshield Kit	07293
Windshield Kit	07294
Heavy-Duty Brushguard and Bumper Kit	07296
Canopy Kit	07297
Portable Refreshment Center	07298
Brake and Signal Light Kit	107-8020
Vinyl Enclosure	79979

