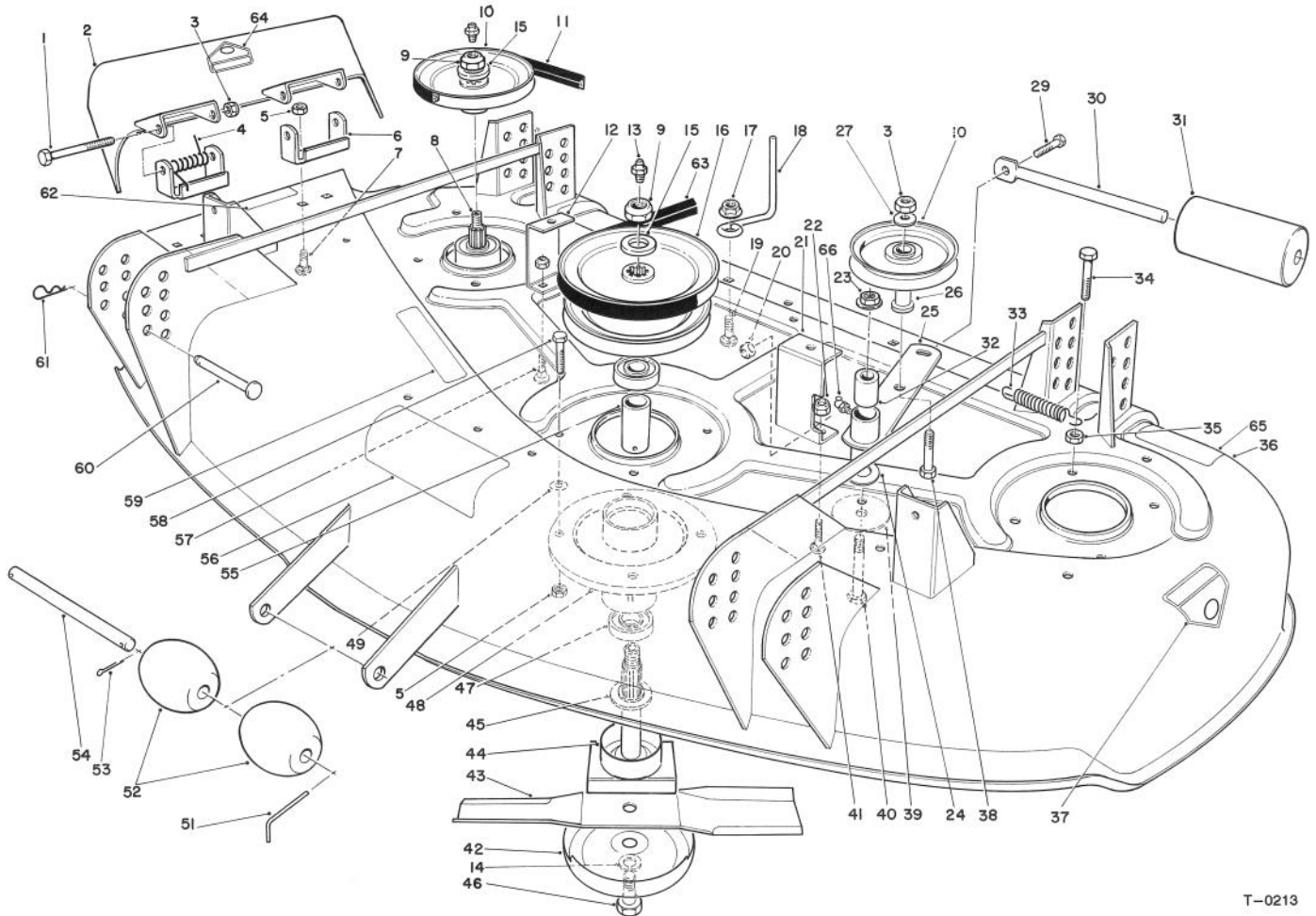




**MODEL NO. 30144-390001 & UP**

**PARTS CATALOG**

**44" SIDE DISCHARGE CUTTING UNIT**  
For Proline Wide Area Mower

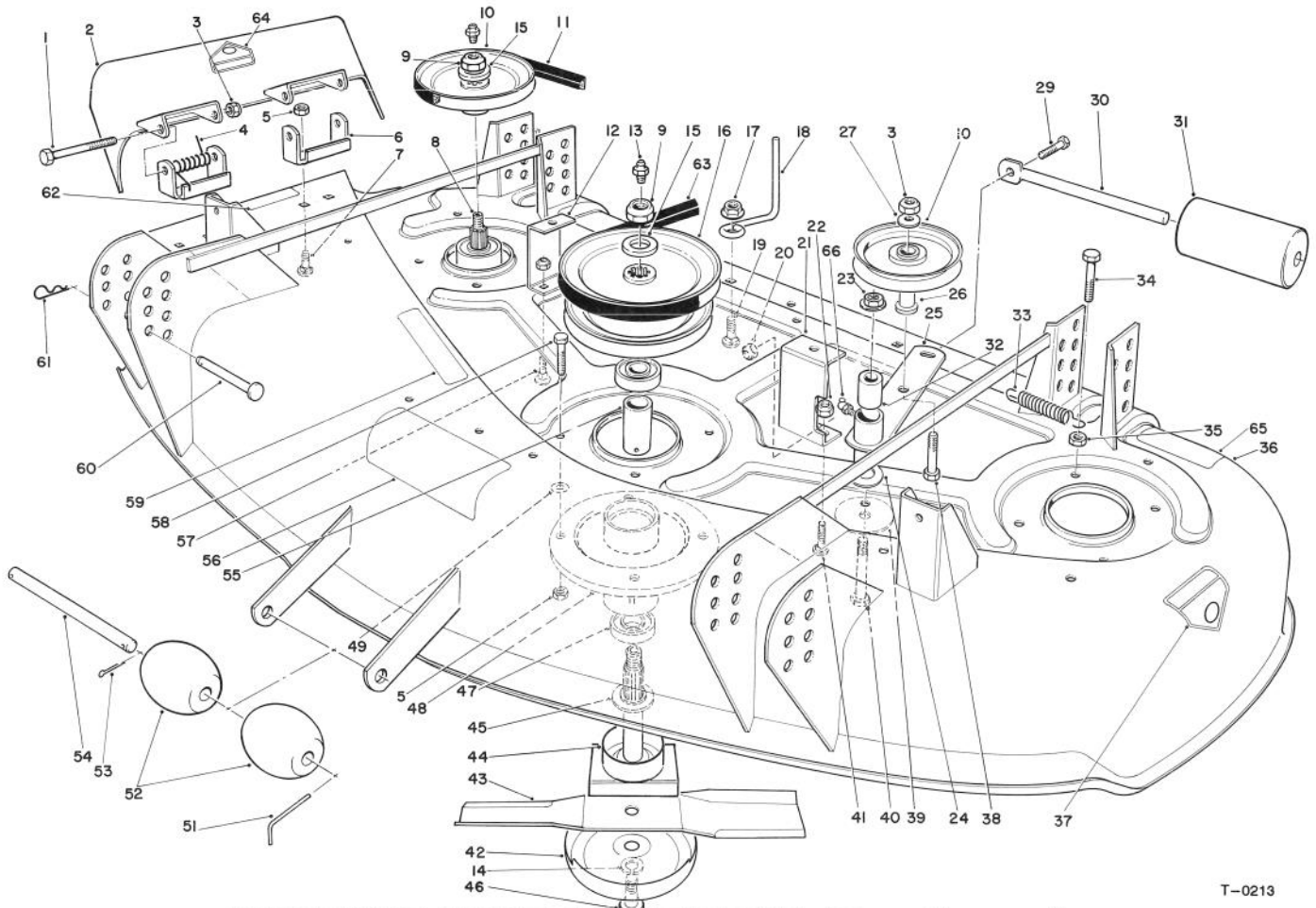


T-0213

**CUTTING UNIT ASSEMBLY**

| Ref. No. | Part No. | Description           | No. Used |
|----------|----------|-----------------------|----------|
| 1        | 3211-15  | Screw - Hex. Hd. Cap  | 2        |
| 2        | 13-3899  | Deflector - Grass     |          |
|          | 57-2250  | (Incl. Ref. #64)      | 1        |
| 3        | 3296-5   | Nut - Lock            | 3        |
| 4        | 40-6230  | Spring - Torsion      | 2        |
| 5        | 32152-1  | Nut - Lock            | 16       |
| 6        | 55-8320  | Bracket - Pivot       | 1        |
| 7        | 3230-18  | Bolt - Carriage       | 4        |
| 8        | 71-2780  | Shaft - Spindle Drive | 2        |
| 9        | 32146-20 | Nut - Lock            | 3        |
| 10       | 67-7690  | Pulley - Spindle      | 2        |
| 11       | 27-1160  | Belt - Spindle        | 1        |
| 12       | 54-3230  | Cover - Bracket R.H.  | 1        |
| 13       | 302-2    | Fitting - Grease      | 3        |
| 14       | 3253-8   | Washer - Lock         | 3        |

| Ref. No. | Part No. | Description          | No. Used |
|----------|----------|----------------------|----------|
| 15       | 7-4150   | Washer - Spindle     | 3        |
| 16       | 67-7650  | Pulley               | 1        |
| 17       | 32128-13 | Nut - Lock           | 2        |
| 18       | 52-4780  | Rod - Belt           | 2        |
| 19       | 3230-2   | Bolt - Carriage      | 2        |
| 20       | 3296-29  | Nut - Lock           | 1        |
| 21       | 54-3240  | Cover - Bracket      | 1        |
| 22       | 3296-42  | Nut - Lock           | 4        |
| 23       | 32128-19 | Nut - Flange Lock    | 1        |
| 24       | 52-2860  | Washer               | A/R      |
| 25       | 92-1657  | Arm - Idler          | 1        |
| 26       | 65-5950  | Bushing - Pulley     | 1        |
| 27       | 7-0081   | Washer - Special     | 1        |
| 29       | 322-3    | Screw - Hex. Hd. Cap | 1        |
| 30       | 62-4480  | Shaft - Roller       | 1        |



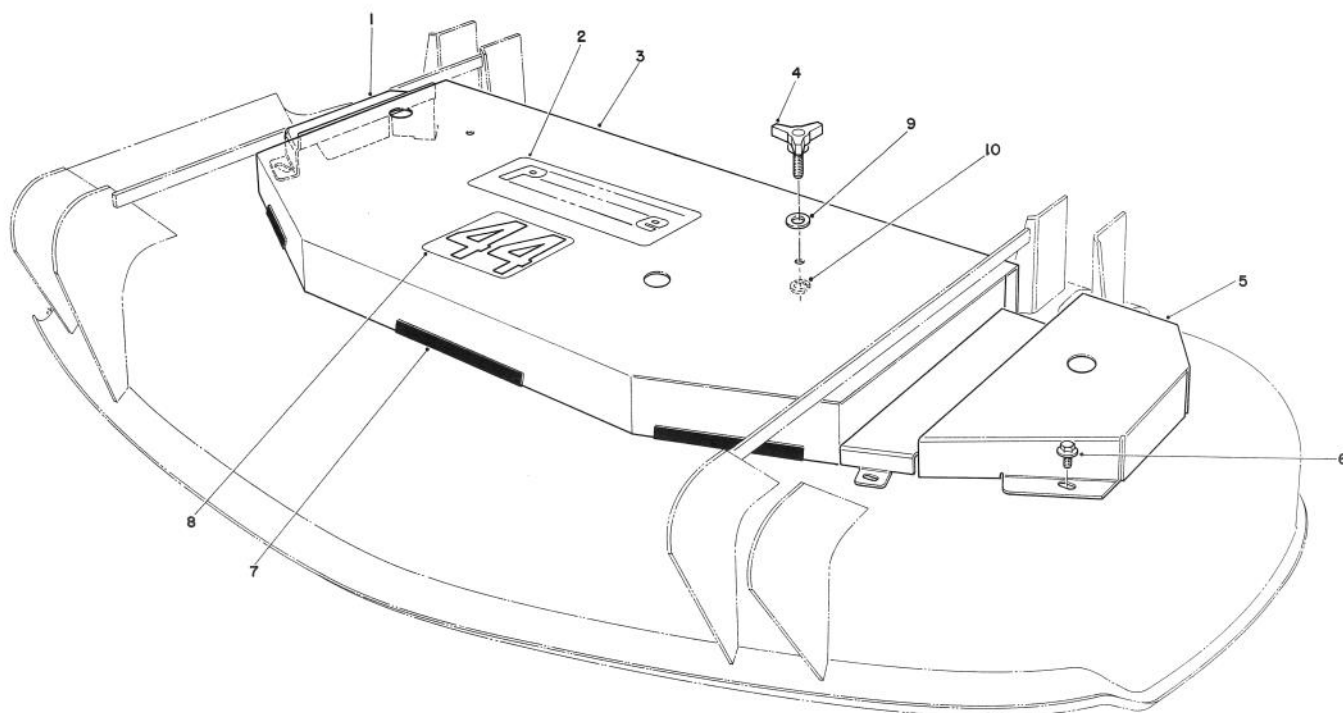
T-0213

## CUTTING UNIT ASSEMBLY (Continued)

| Ref. No. | Part No. | Description                             | No. Used |
|----------|----------|---|----------|
| 31       | 36-1740  | Roller                                  | 1        |
| 32       | 79-2760  | Spacer - Idler Pivot                    | 1        |
| 33       | 54-2730  | Spring - Extension                      | 1        |
| 34       | 322-6    | Screw - Hex. Hd. Cap                    | 1        |
| 35       | 3218-2   | Nut                                     | 1        |
| 36       | 13-8649  | Housing (Incl. Ref. #37,56,62,64, & 65) | 1        |
| 37       | 43-8480  | Decal - Danger                          | 1        |
| 38       | 3211-8   | Screw - Hex. Hd. Cap                    | 1        |
| 39       | 20-9530  | Washer                                  | 1        |
| 40       | 323-13   | Screw - Hex. Hd. Cap                    | 1        |
| 41       | 3229-3   | Bolt - Carriage                         | 2        |
| 42       | 67-7561  | Cup - Anti Scalp                        | 3        |
| 43       | 54-0010  | Blade                                   | 3        |
| 44       | 71-2790  | Shaft - Spindle                         | 1        |
| 45       | 67-7570  | Spacer - Spindle                        | 3        |
| 46       | 51-4060  | Bolt - Blade                            | 3        |
| 47       | 251-257  | Bearing                                 | 6        |
| 48       | 67-7590  | Housing - Spindle                       | 3        |
| 49       | 3256-2   | Washer                                  | A/R      |
| 51       | 57-0690  | Pin - Cotter Special                    | 1        |
| 52       | 29-4820  | Roller                                  | 2        |

| Ref. No. | Part No. | Description   | No. Used |
|----------|----------|---|----------|
| 53       | 3272-11  | Pin - Cotter  | 1        |
| 54       | 40-6400  | Shaft - Roller  | 1        |
| 55       | 67-7580  | Spacer - Bearing  | 3        |
| 56       | 66-1340  | Decal - Danger  | 1        |
| 57       | 3229-1   | Bolt - Carriage   | 2        |
| 58       | 322-4    | Screw - Hex. Hd. Cap  | 11       |
| 59       | 67-5360  | Decal - Shield  | 1        |
| 60       | 283-55   | Pin - Clevis  | 4        |
| 61       | 3290-355 | Pin - Cotter  | 4        |
| 62       | 66-6380  | Decal - Deflector Missing   | 1        |
| 63       | 54-2750  | "V" Belt - Deck Drive   | 1        |
| 64       | 54-9220  | Decal - Danger  | 1        |
| 65       | 68-8340  | Decal - Blade Torque  | 1        |
| 66       | 111420   | Fitting - Grease  | 1        |
| *        | 55-4940  | Blade - High Sail (Optional)  | 3        |
| *        | 67-7660  | Spindle Housing Assembly (Incl. Ref.#8-10,13,15,45, 47,48, & 55)    | 2        |
| *        | 67-7600  | Spindle Housing Assembly (Incl. Ref.#9,13,15,16, 44,45,47,48, & 55) | 1        |

\*Not Illustrated

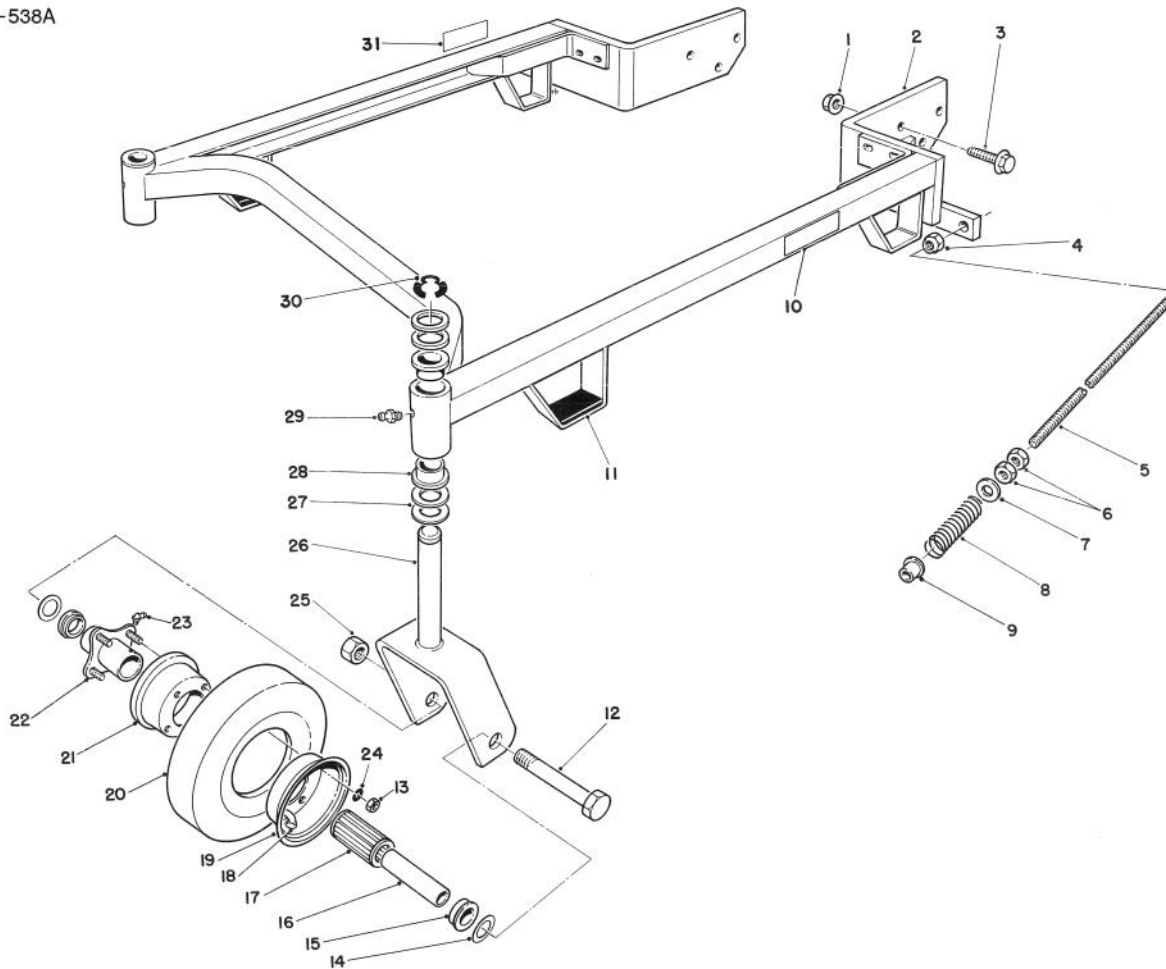


T-0214

## CUTTING UNIT DECK COVERS

| Ref. No. | Part No. | Description         | No. Used |
|----------|----------|---------------------|----------|
| 1        | 54-2250  | Cover - Deck R.H.   | 1        |
| 2        | 74-2080  | Decal - Proline     | 1        |
| 3        | 54-3190  | Cover - Deck Center | 1        |
| 4        | 62-6520  | Handle - Adjustment | 2        |
| 5        | 54-2220  | Cover - Deck L.H.   | 1        |

| Ref. No. | Part No. | Description          | No. Used |
|----------|----------|----------------------|----------|
| 6        | 46-8560  | Screw - Self Tapping | 5        |
| 7        | 29-0641  | Trim - Jiffy         | 5        |
| 8        | 54-2760  | Decal - 44"          | 1        |
| 9        | 3256-24  | Washer               | 2        |
| 10       | 32151-72 | Ring - Retaining     | 2        |



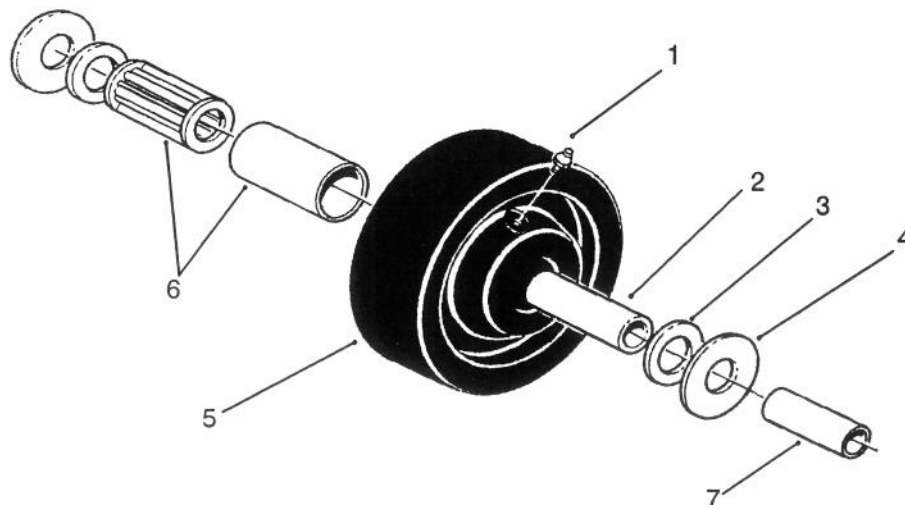
T-0215

## CARRIER FRAME ASSEMBLY

| Ref. No. | Part No. | Description                            | No. Used |
|----------|----------|--|----------|
| 1        | 32128-23 | Nut - Lock                             | 6        |
| 2        | 74-0160  | Frame - Suspension<br>(Incl. Ref. #28) | 1        |
| 3        | 3234-6   | Screw - Hex. Hd. Flange                | 6        |
| 4        | 3296-45  | Nut - Lock                             | 2        |
| 5        | 74-0310  | Shaft - Adjusting                      | 2        |
| 6        | 3218-5   | Nut                                    | 4        |
| 7        | 41-8440  | Washer                                 | 2        |
| 8        | 74-0290  | Spring - Compression                   | 2        |
| 9        | 256-156  | Bushing                                | 2        |
| 10       | 68-8360  | Decal - Height of Cut                  | 1        |
| 11       | 74-0340  | Cushion - Rubber                       | 2        |
| 12       | 325-19   | Screw - Hex. Hd. Cap                   | 2        |
| 13       | 3219-2   | Nut                                    | 8        |
| 14       | 3256-6   | Spacer - Wheel                         | 4        |
| 15       | 62-5580  | Bushing                                | 4        |
| 16       | 68-8980  | Bushing - Spanner                      | 2        |

| Ref. No. | Part No. | Description                             | No. Used |
|----------|----------|---|----------|
| 17       | 62-5570  | Bearing - Roller                        | 2        |
| 18       | 68-8950  | Tube w/Valve                            | 2        |
| 19       | 68-8920  | Wheel Half - Female                     | 2        |
| 20       | 68-8960  | Tire                                    | 2        |
| 21       | 68-8930  | Wheel Half - Male                       | 2        |
| 22       | 68-8940  | Hub - Center                            | 2        |
| 23       | 302-61   | Fitting - Grease                        | 2        |
| 24       | 3256-4   | Washer - Lock                           | 8        |
| 25       | 32153-5  | Nut - Lock                              | 2        |
| 26       | 74-0250  | Fork - Castor                           | 2        |
| 27       | 3-6781   | Washer - Thrust                         | 8        |
| 28       | 28-9290  | Bushing - Special                       | 4        |
| 29       | 302-5    | Fitting - Grease                        | 2        |
| 30       | 32151-91 | Ring - Retaining                        | 2        |
| 31       | 74-0940  | Decal - Height of Cut                   | 1        |
| *        | 13-3869  | Castor Wheel Assembly<br>(2 Per Carton) | 1        |

\*Not Illustrated



T-0220

## CASTOR WHEEL ASSEMBLY NO. 27-1050 (Optional)

| Ref. No. | Part No. | Description        | No. Used | Ref. No. | Part No. | Description      | No. Used |
|----------|----------|--------------------|----------|----------|----------|------------------|----------|
| 1        | 305-55   | Fitting - Grease   | 1        | 5        | 27-1190  | Wheel            | 1        |
| 2        | 27-1200  | Spanner - Bushing  | 1        | 6        | 27-1210  | Bearing - Roller | 1        |
| 3        | 27-1180  | Retainer - Bearing | 2        | *        | 68-8980  | Spanner          | 1        |
| 4        | 27-1170  | Washer - Thrust    | 2        |          |          |                  |          |

\*Note Used With Castor Fork No. 68-8900

# TORO PART NUMBER INDEX

3315-538A

| Part No. | Description                  | Pg. Ref.<br>No. No. Qty. | Part No. | Description             | Pg. Ref.<br>No. No. Qty. |
|----------|------------------------------|--------------------------|----------|-------------------------|--------------------------|
| 3-6781   | Washer - Thrust              | 4 27 8                   | 68-8930  | Wheel Half - Male       | 4 21 2                   |
| 7-0081   | Washer - Special             | 1 27 1                   | 68-8940  | Hub - Center            | 4 22 2                   |
| 7-4150   | Washer - Spindle             | 1 15 3                   | 68-8950  | Tube w/Valve            | 4 18 2                   |
| 111420   | Fitting - Grease             | 2 66 1                   | 68-8960  | Tire                    | 4 20 2                   |
| 13-3869  | Castor Wheel Assembly        | 4 * 1                    | 68-8980  | Spanner                 | 5 * 1                    |
| 13-3899  | Deflector - Grass            | 1 2                      | 68-8980  | Bushing - Spanner       | 4 16 2                   |
| 13-8649  | Housing                      | 2 36 1                   | 71-2780  | Shaft - Spindle Drive   | 1 8 2                    |
| 20-9530  | Washer                       | 2 39 1                   | 71-2790  | Shaft - Spindle         | 2 44 1                   |
| 27-1160  | Belt - Spindle               | 1 11 1                   | 74-0160  | Frame - Suspension      | 4 2 1                    |
| 27-1170  | Washer - Thrust              | 5 4 2                    | 74-0250  | Fork - Castor           | 4 26 2                   |
| 27-1180  | Retainer - Bearing           | 5 3 2                    | 74-0290  | Spring - Compression    | 4 8 2                    |
| 27-1190  | Wheel                        | 5 5 1                    | 74-0310  | Shaft - Adjusting       | 4 5 2                    |
| 27-1200  | Spanner - Bushing            | 5 2 1                    | 74-0340  | Cushion - Rubber        | 4 11 2                   |
| 27-1210  | Bearing - Roller             | 5 6 1                    | 74-0940  | Decal - Height of Cut   | 4 31 1                   |
| 28-9290  | Bushing - Special            | 4 28 4                   | 74-2080  | Decal - Proline         | 3 2 1                    |
| 29-0641  | Trim - Jiffy                 | 3 7 5                    | 79-2760  | Spacer- Idler Pivot     | 2 32 1                   |
| 29-4820  | Roller                       | 2 52 2                   | 92-1657  | Arm - Idler             | 1 25 1                   |
| 29-5590  | Bracket - Pivot              | 1 6 2                    | 251-257  | Bearing                 | 2 47 6                   |
| 57-0690  | Pin - Cotter Special         | 2 51 1                   | 256-156  | Bushing                 | 4 9 2                    |
| 36-1740  | Roller                       | 2 31 1                   | 283-55   | Pin - Clevis            | 2 60 4                   |
| 40-6230  | Spring - Torsion             | 1 4 2                    | 302-2    | Fitting - Grease        | 1 13 3                   |
| 40-6400  | Shaft - Roller               | 2 54 1                   | 302-5    | Fitting - Grease        | 4 29 2                   |
| 41-8440  | Washer                       | 4 7 2                    | 302-61   | Fitting - Grease        | 4 23 2                   |
| 43-8480  | Decal - Danger               | 2 37 1                   | 305-55   | Fitting - Grease        | 5 1 1                    |
| 46-8560  | Screw - Self Tapping         | 3 6 5                    | 322-3    | Screw - Hex. Hd.        | 1 29 1                   |
| 51-4060  | Bolt - Blade                 | 2 46 3                   | 322-4    | Screw - Hex. Hd.        | 2 58 11                  |
| 52-2860  | Washer                       | 1 24A/R                  | 322-6    | Screw - Hex. Hd.        | 2 34 1                   |
| 52-4780  | Rod - Belt                   | 1 18 2                   | 323-13   | Screw - Hex. Hd.        | 2 40 1                   |
| 54-0010  | Blade                        | 2 43 3                   | 325-19   | Screw - Hex. Hd.        | 4 12 2                   |
| 54-2220  | Cover - Deck L.H.            | 3 5 1                    | 3211-8   | Screw - Hex. Hd.        | 2 38 1                   |
| 54-2250  | Cover - Deck R.H.            | 3 1 1                    | 3211-15  | Screw - Hex. Hd.        | 1 1 2                    |
| 54-2730  | Spring - Extension           | 2 33 1                   | 3218-2   | Nut                     | 2 35 1                   |
| 54-2750  | "V"Belt - Deck Drive         | 2 63 1                   | 3218-5   | Nut                     | 4 6 4                    |
| 54-2760  | Decal - 44"                  | 3 8 1                    | 3219-2   | Nut                     | 4 13 8                   |
| 54-3190  | Cover - Deck Center          | 3 3 1                    | 3229-1   | Bolt - Carriage         | 2 57 2                   |
| 54-3230  | Cover - Bracket R.H.         | 1 12 1                   | 3229-3   | Bolt - Carriage         | 2 41 2                   |
| 54-3240  | Cover - Bracket              | 1 21 1                   | 3230-2   | Bolt - Carriage         | 1 19 2                   |
| 54-9220  | Decal - Danger               | 2 64 1                   | 3230-18  | Bolt - Carriage         | 1 7 4                    |
| 55-4940  | Blade - High Sail (Optional) | 2 * 3                    | 3234-6   | Screw - Hex. Hd. Flange | 4 3 6                    |
| 57-2250  | Deflector - Grass            | 1 2 1                    | 3253-8   | Washer - Lock           | 1 14 3                   |
| 62-4480  | Shaft - Roller               | 1 30 1                   | 3256-2   | Washer                  | 2 49A/R                  |
| 62-5570  | Bearing - Roller             | 4 17 2                   | 3256-4   | Washer - Lock           | 4 24 8                   |
| 62-5580  | Bushing                      | 4 15 4                   | 3256-6   | Spacer - Wheel          | 4 14 4                   |
| 62-6520  | Handle - Adjustment          | 3 4 2                    | 3256-24  | Washer                  | 3 9 2                    |
| 65-5950  | Bushing - Pulley             | 1 26 1                   | 3272-11  | Pin - Cotter            | 2 53 1                   |
| 66-1340  | Decal - Danger               | 2 56 1                   | 3290-355 | Pin - Cotter            | 2 61 4                   |
| 66-6380  | Decal - Deflector Missing    | 2 62 1                   | 3296-5   | Nut - Lock              | 1 3 3                    |
| 67-5360  | Decal - Shield               | 2 59 1                   | 3296-29  | Nut - Lock              | 1 20 1                   |
| 67-7561  | Cup - Anti Scalp             | 2 42 3                   | 3296-42  | Nut - Lock              | 1 22 4                   |
| 67-7570  | Spacer - Spindle             | 2 45 3                   | 3296-45  | Nut - Lock              | 4 4 2                    |
| 67-7580  | Spacer - Bearing             | 2 55 3                   | 32128-13 | Nut - Lock              | 1 17 2                   |
| 67-7590  | Housing - Spindle            | 2 48 3                   | 32128-19 | Nut - Flange Lock       | 1 23 1                   |
| 67-7600  | Spindle Housing Assembly     | 2 * 1                    | 32128-23 | Nut - Lock              | 4 1 6                    |
| 67-7650  | Pulley                       | 1 16 1                   | 32146-20 | Nut - Lock              | 1 9 3                    |
| 67-7660  | Spindle Housing Assembly     | 2 * 2                    | 32151-72 | Ring - Retaining        | 2 10 2                   |
| 67-7690  | Pulley - Spindle             | 1 10 2                   | 32151-91 | Ring - Retaining        | 4 30 2                   |
| 68-8340  | Decal - Blade Torque         | 2 65 1                   | 32152-1  | Nut - Lock              | 1 5 16                   |
| 68-8360  | Decal - Height of Cut        | 4 10 1                   | 32153-5  | Nut - Lock              | 4 25 2                   |
| 68-8920  | Wheel Half - Female          | 4 19 2                   |          |                         |                          |

\*Not Illustrated



