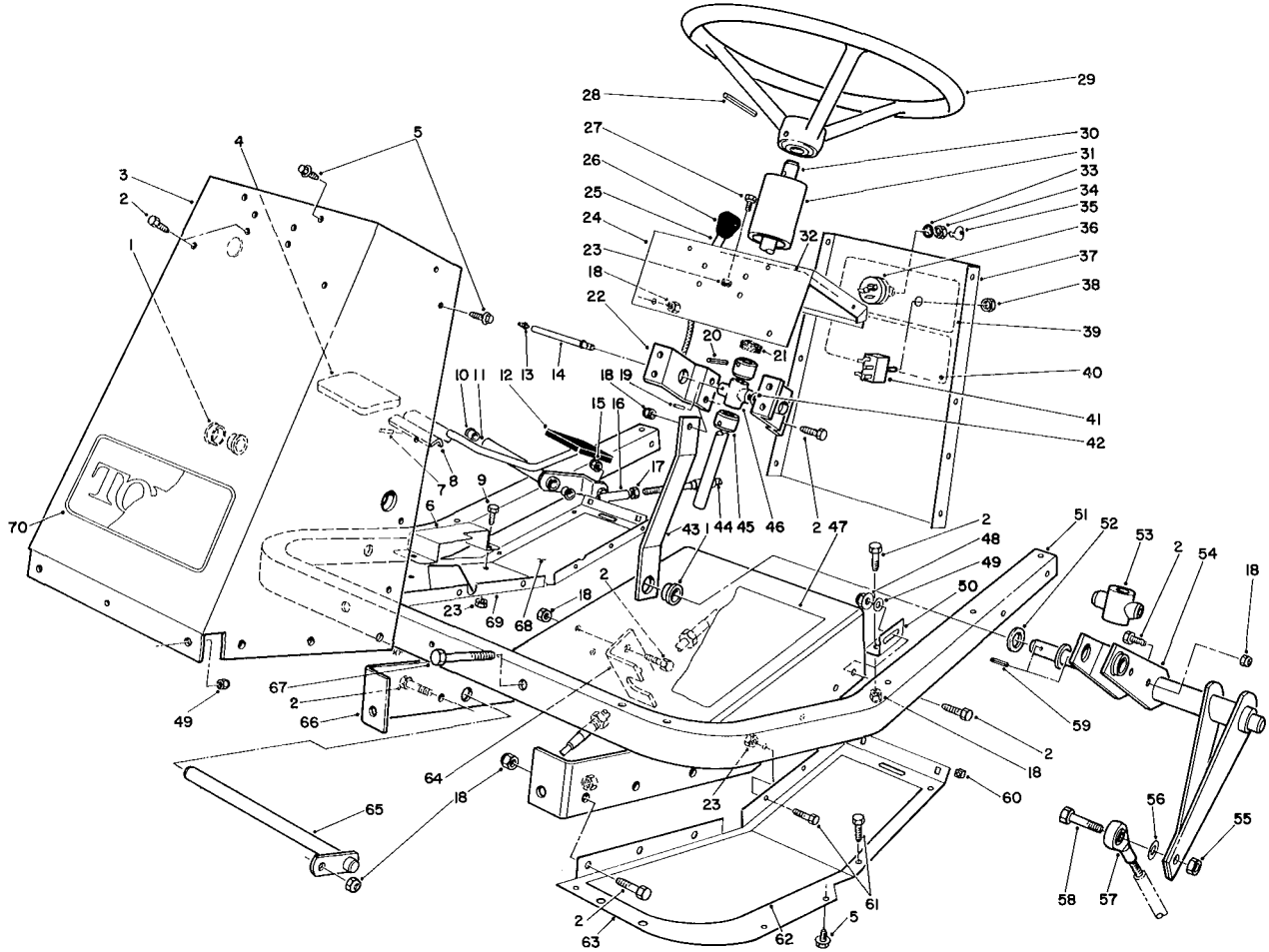




MODEL NO. 30718-390001 & UP	PARTS CATALOG
PROLINE 118	



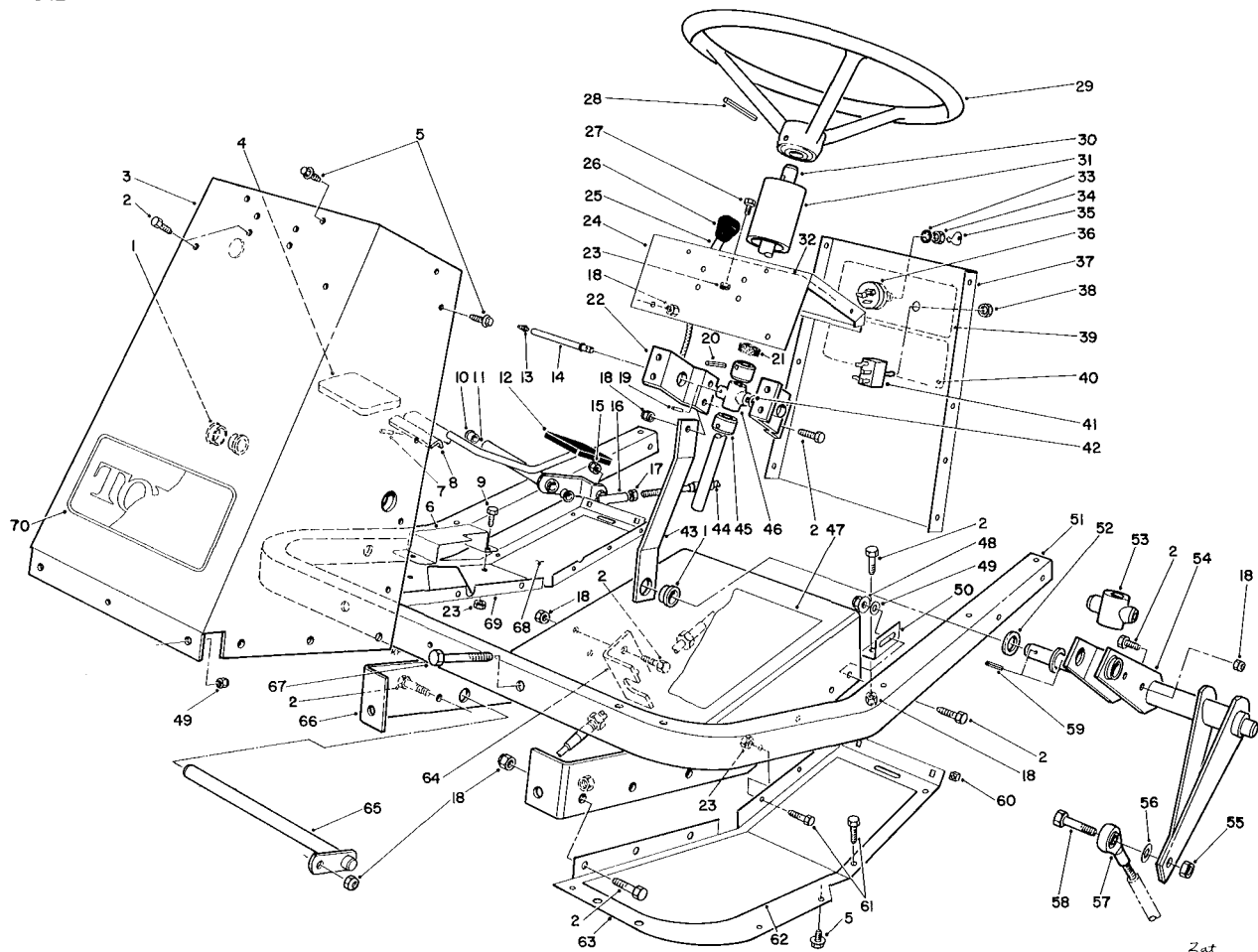
T-0069

FRAME & STEERING ASSEMBLY

Ref. No.	Part No.	Description	No. Used
1	27-9080	Bushing	3
2	322-4	Screw - Hex. Hd.	19
3	54-1900	Tower - Front	1
4	49-6470	Pad - Accelerator	1
5	46-8560	Screw - Hex. Hd.	25
6	80-4930	Footrest - Pedal	1
7	32121-45	Pin - Roll	1
8	80-4920	Pedal - Accelerator	1
9	321-3	Screw - Hex. Hd.	2
10	256-156	Bushing	2
11	74-0110	Pedal - Traction (Incl. Ref. #10)	1
12	49-6430	Pad - Reverse	1
13	302-22	Fitting Grease	1
14	59-1610	Tube - Grease Fitting	1

Ref. No.	Part No.	Description	No. Used
15	3296-3	Nut - Hex.	1
16	2411-34	Ball Joint	1
17	3220-1	Nut - Jam	1
18	3296-29	Nut - Lock	24
19	32121-20	Pin - Roll	1
20	32121-31	Pin - Roll	2
21	21-9260	Cover - Dust	1
22	54-1950	Bracket - Support Bearing	2
23	3296-42	Nut - Lock	16
24	54-1000	Tower - Top	1
25	54-1450	Control - Throttle, Choke	2
26	66-0120	Knob	2
27	321-2	Screw - Hex. Hd.	4
28	32121-10	Pin - Roll	1

TPS

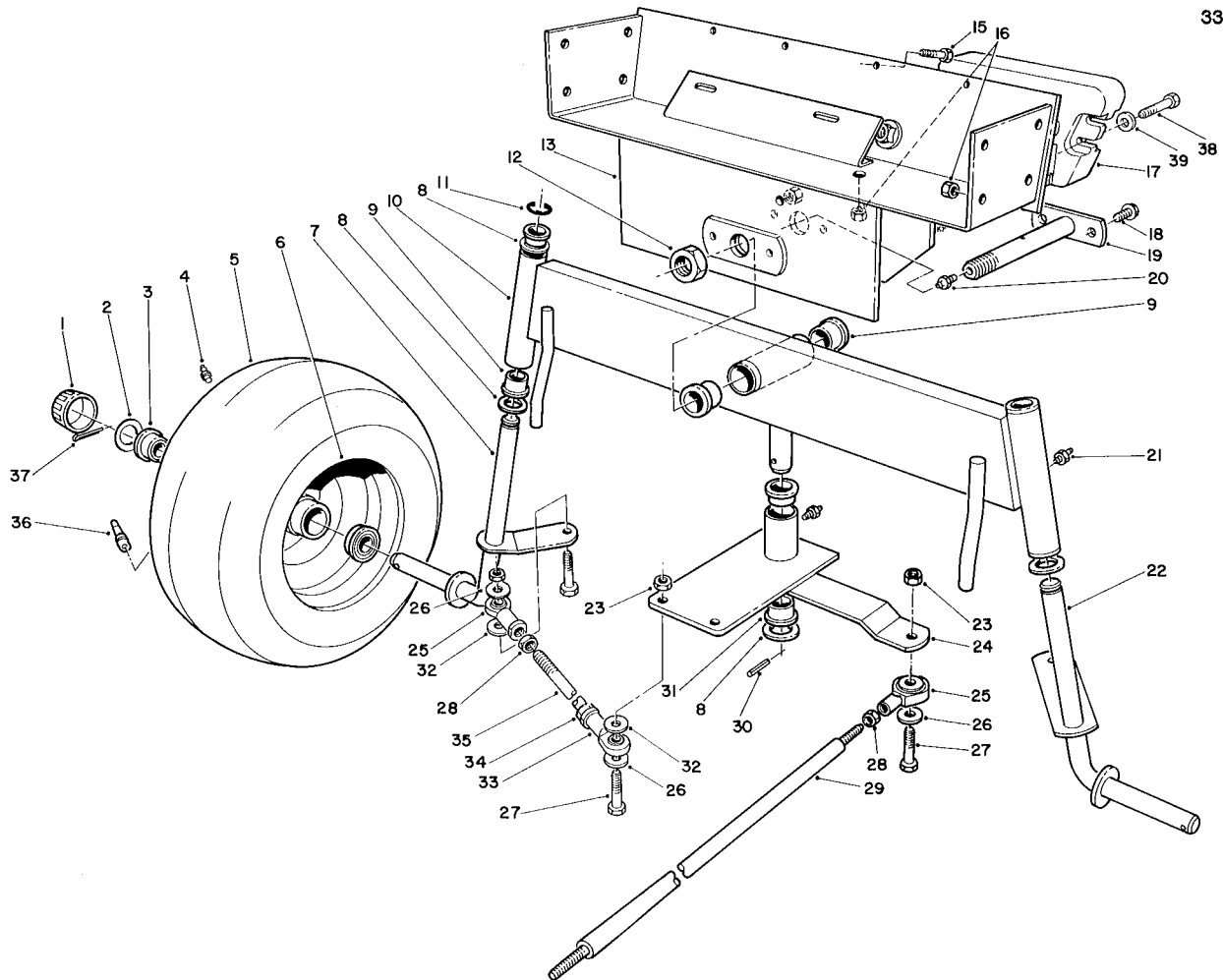


T-0069

FRAME & STEERING ASSEMBLY

Ref. No.	Part No.	Description	No. Used
29	76-1420	Wheel - Steering	1
30	54-1420	Shaft - Steering	1
31	47-1980	Cover Steering Shaft	1
32	54-0860	Decal - Throttle Choke	1
33		Washer - Lock	1
34		Nut - Lock	1
35	63-8360	Key	2
36	27-2360	Switch - Ignition (Incl. Ref. #33-35)	1
37	54-1960	Panel - Tower Rear	1
38	218-500	Nut	1
39	54-0860	Decal - Throttle, Choke	1
40	54-0870	Decal - Switch	1
41	37-2610	Switch - Clutch & Brake	1
42	3290-440	Washer - Belleville	1
43	54-1340	Link - Steering	1
44	54-2640	Cable - Traction Control	1
45	28-3940	Collar - Steering Shaft	2
46	60-9050	Bearing - Steering Shaft	1
47	54-0880	Decal - Tunnel	1
48	32128-20	Nut - Flange Lock	2
49	3256-23	Washer - Flat	4

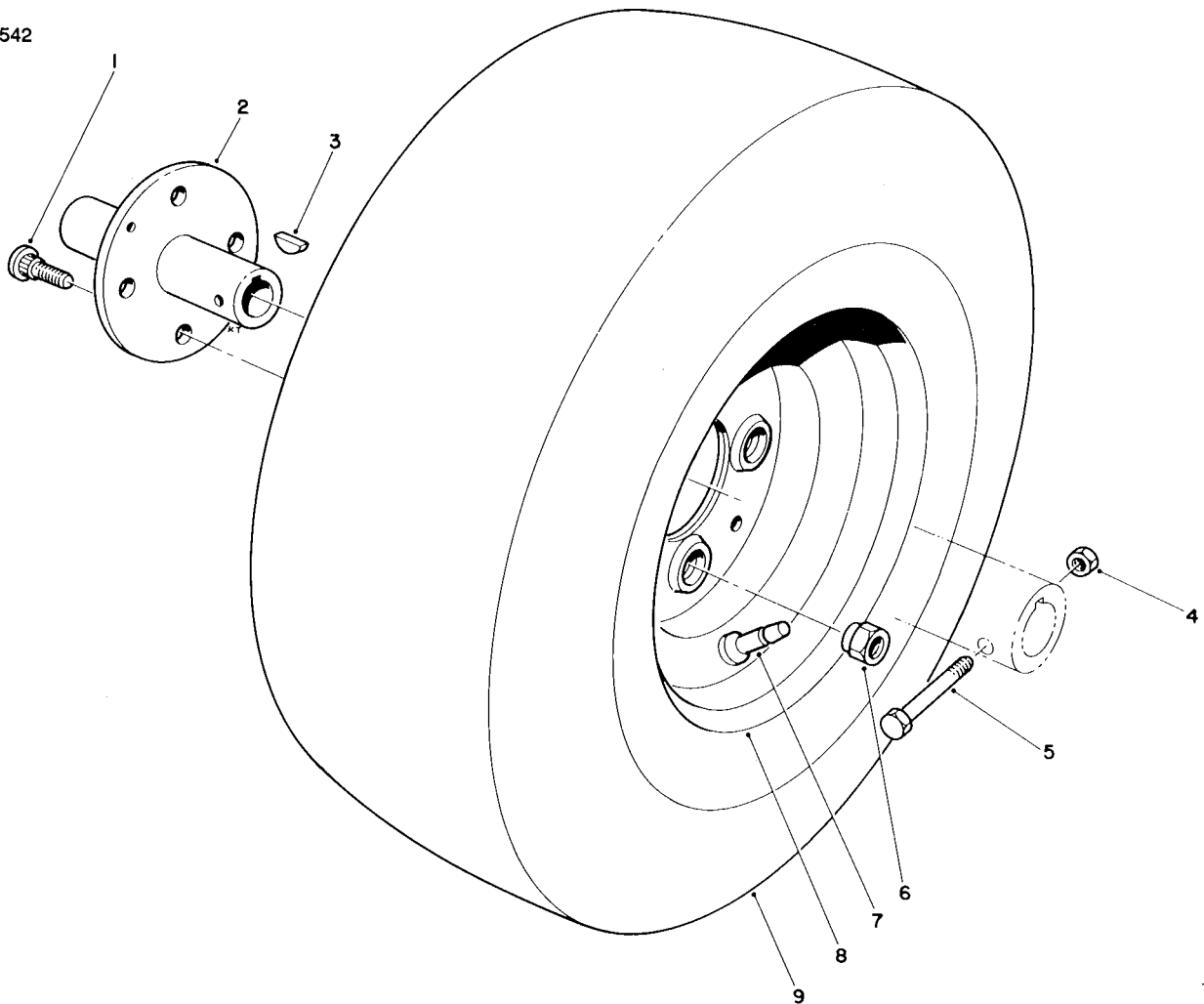
Ref. No.	Part No.	Description	No. Used
50	54-1440	Bracket - Tunnel	2
51	60-9140	Frame - Footrest	1
52	3-6498	Washer - Thrust	2
53	54-2630	Follower - Steering Shaft	1
54	54-2040	Follower Lever	1
55	32152-9	Nut - Lock	1
56	3256-4	Washer - Flat	1
57	251-304	Rod End	1
58	324-7	Screw - Hex. Hd.	1
59	32121-77	Pin Roll	2
60	32115-5	Nut Square	4
61	321-4	Screw - Hex. Hd.	14
62	54-2260	Pad Footrest L.H.	1
63	54-1470	Footrest - L.H.	1
64	54-1770	Bracket - Cable Traction	1
65	59-1550	Pedal - Shaft	1
66	60-9150	Tunnel	1
67	322-10	Screw - Hex. Hd.	2
68	82-4720	Pad - Footrest R.H.	1
69	80-4910	Footrest - R.H.	1
70	62-7400	Decal - Toro	1



T-0070

REAR AXLE ASSEMBLY

Ref. No.	Part No.	Description	No. Used	Ref. No.	Part No.	Description	No. Used
1	61-9780	Hub Cap	2	21	302-49	Fitting - Grease	3
2	28-2480	Washer - Flat	2	22	54-0560	Spindle L. H.	1
3	251-210	Bearing - Ball	4	23	32152-9	Nut	5
4	302-5	Fitting - Grease	2	24	54-0600	Plate- Pivot (Incl. Ref. #20 & 30)	1
5	231-126	Tire	2	25	251-305	Rod End	3
6	242-60	Rim	2	26	3256-4	Washer - Flat	7
7	54-0570	Spindle R.H.	1	27	324-7	Screw	5
8	3-6498	Washer - Thrust	5	28	3220-4	Nut - Jam	3
9	46-6680	Bushing	6	29	54-1491	Rod - Steering , Rear	1
10	54-0510	Axle - Rear (Incl. Ref. #9 & 20)	1	30	32121-51	Pin - Roll	1
11	32151-48	Ring - Retaining	2	31	27-9080	Bushing	2
12	3296-41	Nut - Hex.	1	32	62-4420	Spacer	9
13	54-0330	Frame - Rear	1	33	251-304	Rod End	2
15	321-4	Screw	4	34	3220-19	Nut - Jam	2
16	3296-29	Nut	8	35	57-3100	Tie Rod - Steering	2
17	24-5790	Weight - Rear	1	36	232-27	Valve Stem w/Cap	2
18	32144-15	Screw	2	37	3272-12	Pin - Cotter	2
19	59-1500	Pivot - Axle	1	38	325-6	Screw	2
20	302-11	Fitting - Grease	1	39	3253-7	Washer	2

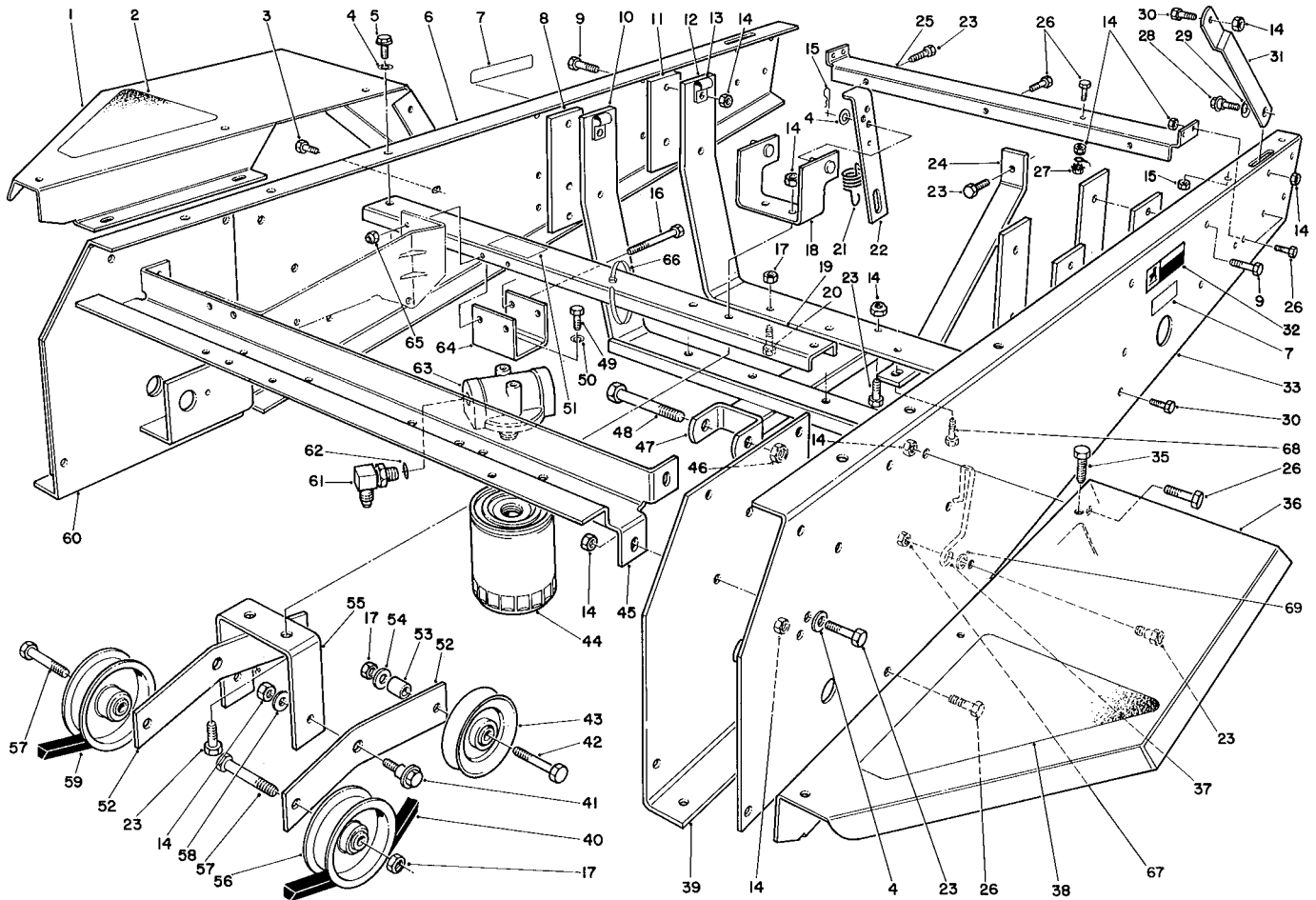


T-0071

FRONT WHEEL ASSEMBLY

Ref. No.	Part No.	Description	No. Used
1	242-71	Bolt - Wheel	8
2	54-0140	Hub - Wheel	2
3	3257-10	Key - Woodruff	2
4	3296-29	Nut - Lock	2
5	322-10	Screw	2

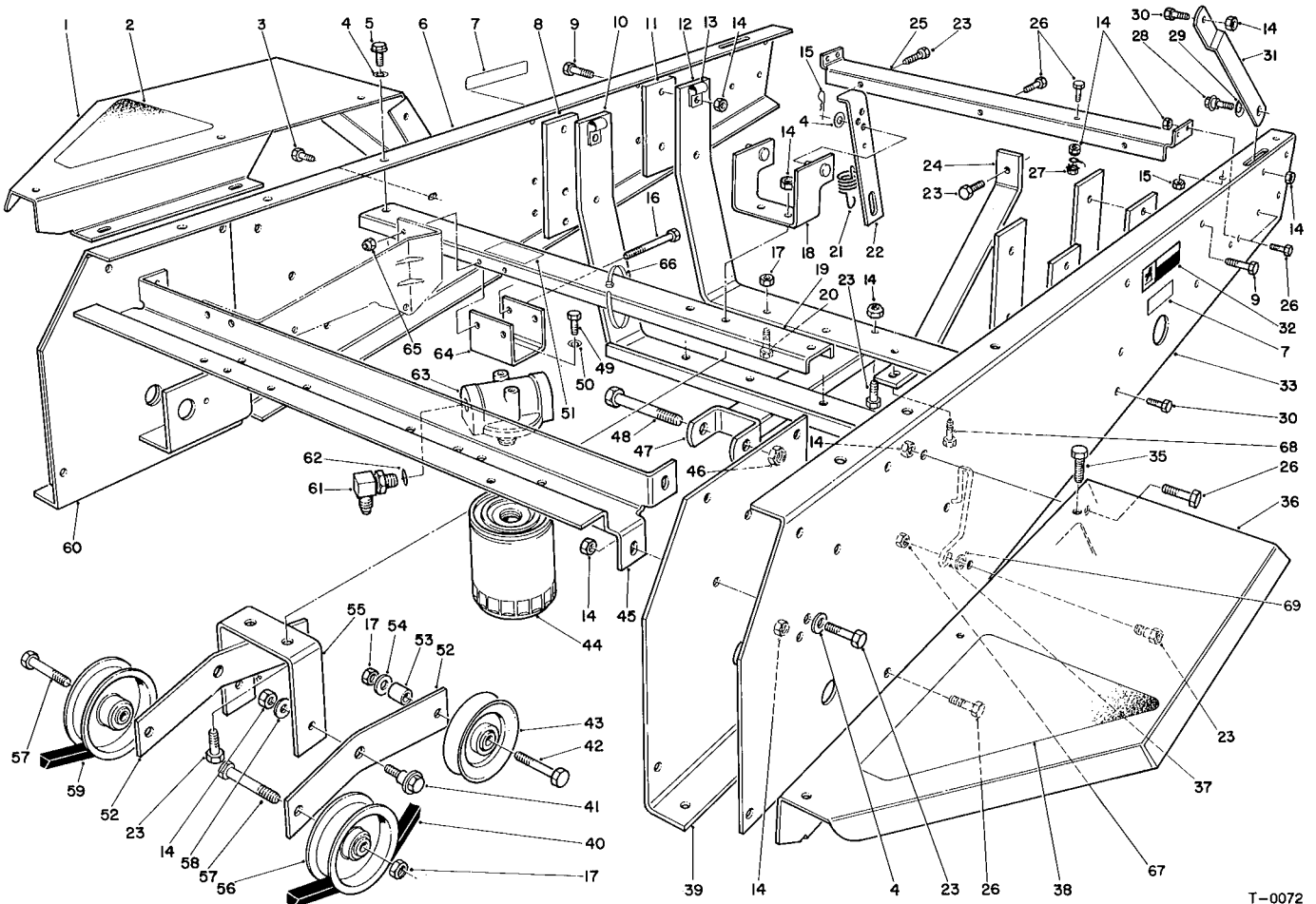
Ref. No.	Part No.	Description	No. Used
6	242-50	Nut	8
7	232-7	Valve Stem w/Cap	2
8	242-76	Rim	2
9	231-122	Tire	2



T-0072

FRAME & JACKSHAFT ASSEMBLY

Ref. No.	Part No.	Description	No. Used	Ref. No.	Part No.	Description	No. Used
1	54-1930	Fender R.H.	1	23	322-6	Screw	10
2	54-8990	Pad - Fender R.H.	1	24	54-1820	Bar - Tension	1
3	3234-14	Screw	4	25	54-1830	Support - Shield	1
4	3256-23	Washer - Flat	8	26	322-4	Screw	13
5	32144-11	Screw - Thread Forming	2	27	32149-1	Nut - Lock	1
6	54-1910	Channel - Side R.H.	1	28	27-0410	Bolt - Shoulder	2
7	77-3100	Decal - Caution	2	29	3290-211	Washer - Spring	2
8	54-1800	Plate - Engine Front	2	30	322-2	Screw	4
9	322-6	Screw	8	31	54-1870	Stop - Hood, Lower	2
10	54-2420	Mount - Engine	1	32	54-0910	Decal - Warning	1
11	54-1810	Plate - Engine, Rear	2	33	54-1920	Channel - Side L.H.	1
12	54-1210	Mount - Engine	1	35	46-8560	Screw	6
13	2412-100	"J" Clamp	4	36	54-1940	Fender L.H.	1
14	3296-29	Nut	32	37	55-4860	Guide - Belt	1
15	3290-250	Pin - Cotter	2	38	54-8980	Pad - Fender L.H.	1
16	321-14	Screw	2	39	54-0460	Axle Stand - L.H.	1
17	3296-44	Nut	6	40	54-1380	JackShaft - "V" Belt	1
18	54-2070	Anchor - Spring	1	41	19-1470	Bolt - Shoulder	2
19	54-2500	Channel - Middle	1	42	323-11	Screw	2
20	323-7	Screw	3	43	62-4530	Idler - "V" Belt	2
21	54-1410	Spring - Idler	2	44	54-0110	Filter - Transmission Oil	1
22	54-1130	Link - Idler Anchor	2	45	54-1010	Channel - Front	1

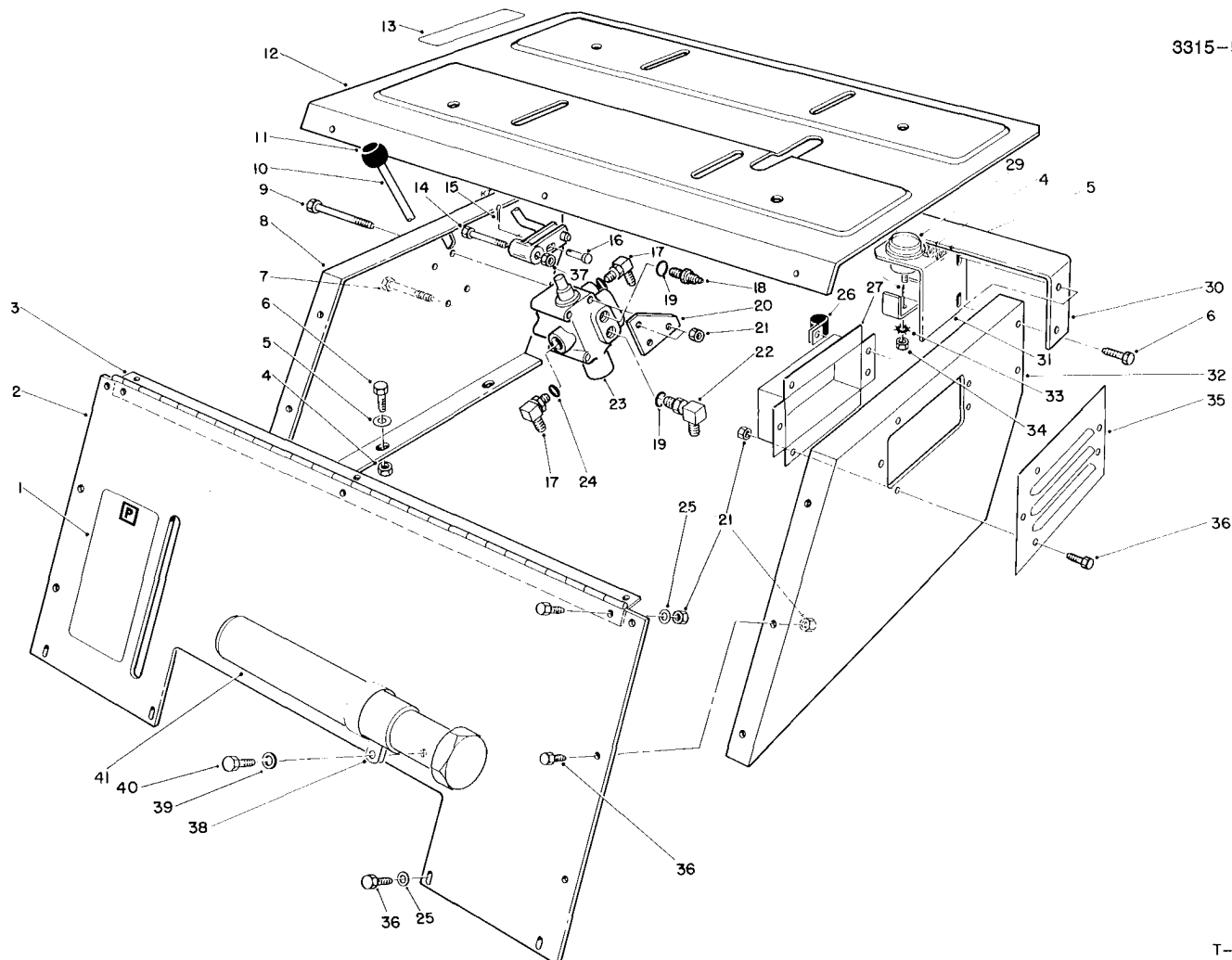


T-0072

FRAME & JACKSHAFT ASSEMBLY (Continued)

Ref. No.	Part No.	Description	No. Used
45	54-1010	Channel - Front	1
46	3296-61	Nut	1
47	54-1730	Mount - Cylinder	1
48	327-24	Screw	1
49	321-3	Screw	2
50	3253-3	Washer - Lock	2
51	53-4430	Decal - Oil	1
52	54-9200	Lever - Idler	2
53	37-7250	Spacer	2
54	3256-3	Washer - Flat	2
55	54-1060	Bracket - Idler Mount	1
56	62-4540	Idler - Flat	2
57	323-9	Screw	2

Ref. No.	Part No.	Description	No. Used
58	23-1120	Washer - Flat	2
59	54-1390	"V" Belt - Traction	1
60	54-0450	Axle Stand R.H.	1
61	353-371	Fitting - 90°	2
62	237-79	"O" Ring	1
63	54-0100	Filter Head Assembly	1
64	54-1120	Bracket - Filter Head	1
65	3296-42	Nut - Lock	2
66	3290-379	Cable Tie	7
67	32128-20	Nut - Flange Lock	1
68	11-0590	Screw	1
69	3255-8	Washer - Lock, Ext. Tooth	1

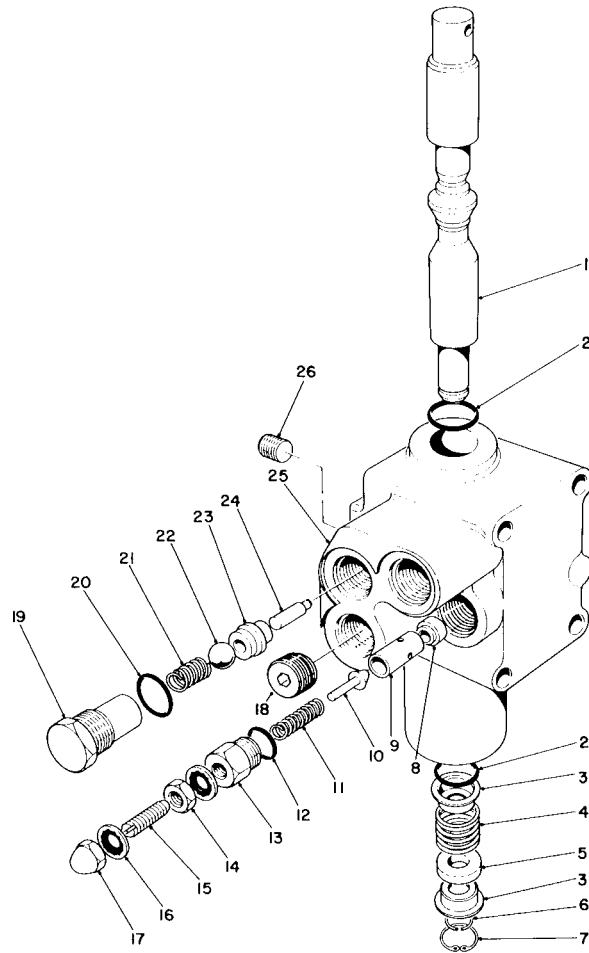


T-0073

SEAT SUPPORT ASSEMBLY

Ref. No.	Part No.	Description	No. Used	Ref. No.	Part No.	Description	No. Used
1	54-0920	Decal - Parking Brake	2	22	353-375	Fitting - 90°	1
2	80-3760	Support - Seat, Front	1	23	54-0090	Valve Assembly	1
3	54-3110	Hinge - Seat	1	24	237-42	"O"Ring	2
4	3296-29	Nut	8	25	3356-1	Washer - Flat	10
5	3256-23	Washer - Flat	6	26	2412-94	"R"Clamp	1
6	322-4	Screw	8	27	54-1700	Chamber - Air	1
7	321-14	Screw	2	28	218-515	Bracket - Mounting	1
8	54-1220	Support - Seat R.H.	1	29	12-8130	Meter - Hour	1
9	321-23	Screw	2	30	54-1550	Support - Hood	1
10	82-4680	Lever - Valve	1	31	54-1190	Bracket - Hour Meter	1
11	233-37	Knob	1	32	54-1230	Support - Seat L.H.	1
12	54-1280	Plate - Seat	1	33	335-8	Washer - Ext. Tooth	1
13	54-0900	Decal - Lift Control	1	34	3217-26	Nut	1
14	56-6590	Screw	1	35	54-1790	Cover - Chamber	1
15	3272-6	Pin - Cotter	1	36	321-4	Screw	5
16	283-17	Pin - Clevis	1	37	3296-39	Nut	1
17	353-511	Fitting	2	38	2412-120	"R"Clamp	2
18	353-545	Fitting	1	39	3256-51	Screw	2
19	237-78	"O"Ring	2	40	32104-76	Screw	2
20	82-4700	Bracket - Lever, Valve	1	41	74-0720	Tube - Manual	1
21	3296-42	Nut - Lock	19	*	82-8640	Wire - Jumper (Hour Meter)	1

* Not Illustrated



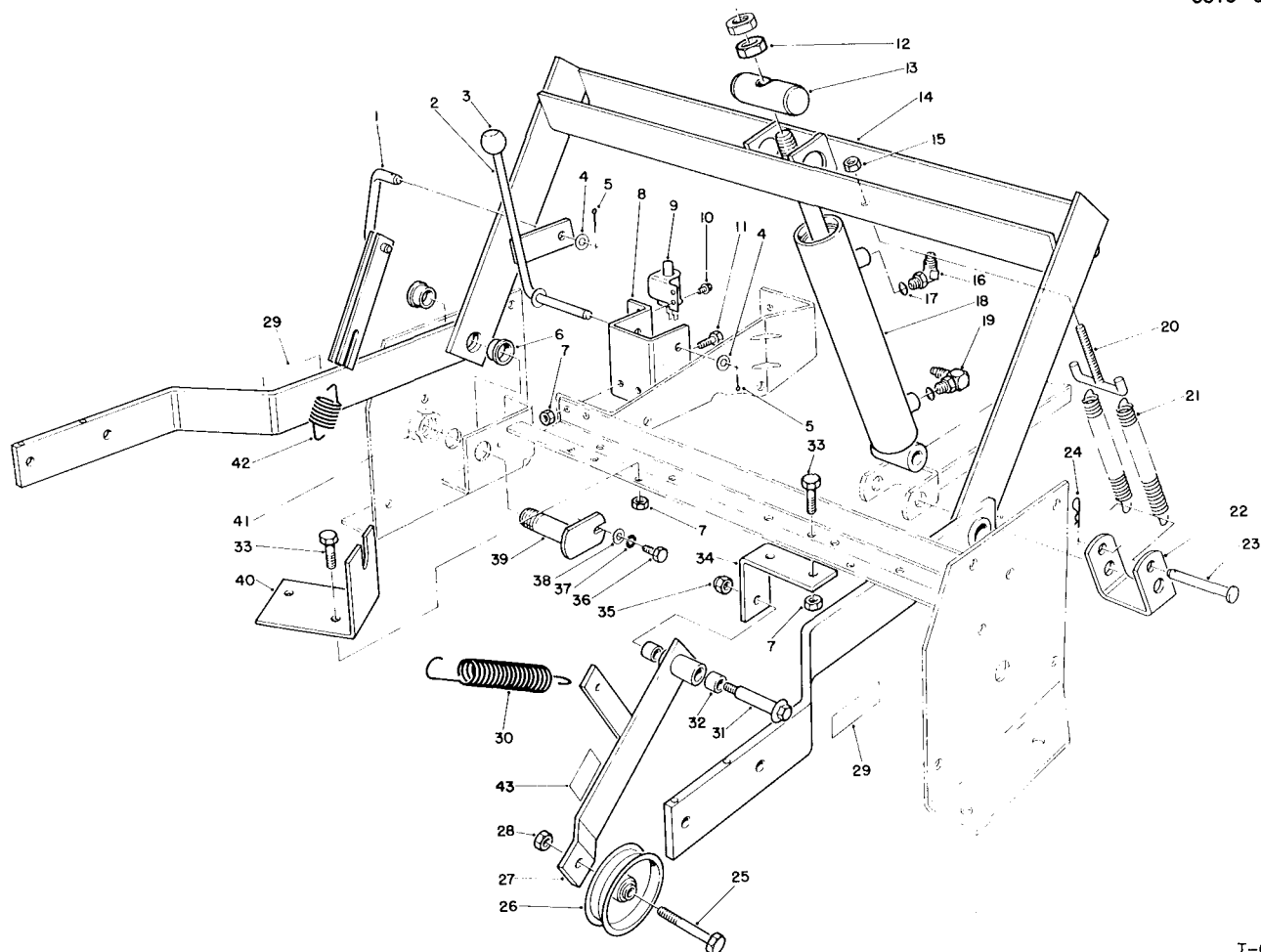
T-0075

VALVE ASSEMBLY NO. 54-0090

Ref. No.	Part No.	Description	No. Used
1	54-0260	Spool	1
2	22-8500	"O"Ring	2
3	22-8380	Retainer - Spring	2
4	22-8410	Spring	1
5	27-5200	Spacer	1
6	22-8480	Ring Retaining	1
7	22-8490	Ring Retaining	1
8	55-3640	Seat - Relief	1
9		Guide	1
10		Plunger	1
11		Spring	1
12		"O"Ring	1
13		Cap - PV Adjustment	1
14		Nut	1

Ref. No.	Part No.	Description	No. Used
15		Screw - Set	1
16		Stat O Seal	1
17		Nut - Accorn	1
18	28-1120	Plug	1
19	22-8338	Plug	1
20	237-42	"O"Ring	2
21	22-8340	Spring	1
22	22-8350	Ball	1
23	22-8370	Seat - Check Valve	1
24	22-8360	Pin - Cam	1
25		Body	1
26	55-3650	Plug	1
*	55-3630	Adjustable Relief Valve (Incl. Ref. #9-17)	1

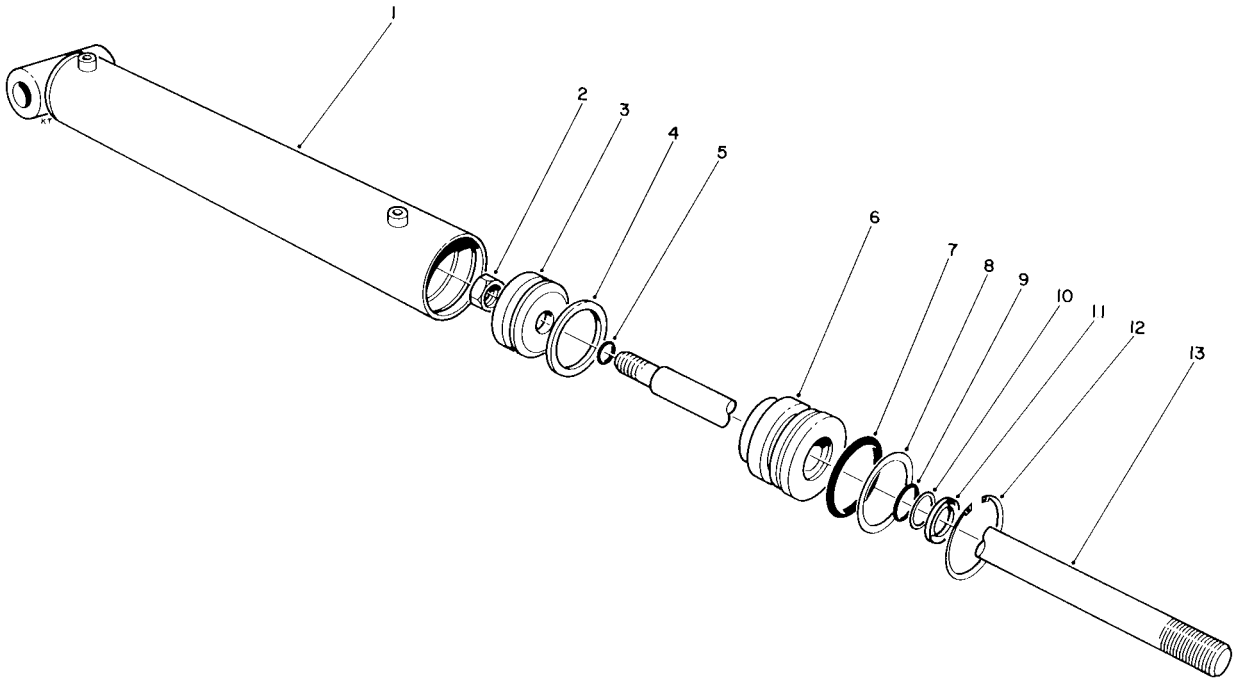
* Not Illustrated



T-0076

PARKING BRAKE & LIFT FRAME ASSEMBLY

Ref. No.	Part No.	Description	No. Used	Ref. No.	Part No.	Description	No. Used
1	54-2120	Link - Parking Brake	1	23	283-55	Pin - Clevis	1
2	54-2110	Lever - Brake	1	24	3290-355	Pin - Cotter	1
3	233-37	Knob	1	25	323-10	Screw	1
4	3256-24	Washer - Flat	2	26	36-3220	Pulley - Idler	1
5	3272-10	Pin - Cotter	2	27	12-1109	Lever - Idler (Incl. Ref. #43)	1
6	27-9080	Bushing	4	28	3296-44	Nut	1
7	3296-29	Nut	6	29	61-3610	Decal - Warning	2
8	54-1270	Bracket - Parking Brake	1	30	54-1170	Spring - Extension	1
9	55-7120	Switch - Brake	1	31	27-6230	Bolt - Shoulder	1
10	32144-1	Screw - Thread Forming	2	32	256-154	Bushing	2
11	322-6	Screw	2	33	322-4	Screw	4
12	3220-6	Nut - Jam	2	34	55-7310	Bracket - Idler	1
13	54-2000	Pin - Pivot	1	35	3296-6	Nut	1
14	66-1570	Frame - Lift (Incl. Ref. #6)	1	36	321-2	Screw	2
15	32146-5	Nut	2	37	3253-3	Washer	2
16	353-431	Fitting 45°	1	38	3256-1	Washer	2
17	237-78	"O"Ring	2	39	54-2100	Pin - Pivot	2
18	54-0150	Cylinder - Lift	1	40	56-6920	Bracket - Cable Extension	1
19	353-375	Fitting 90°	1	41	3296-15	Nut	2
20	56-3320	"T"Hook	1	42	54-0960	Spring - Parking Brake	1
21	56-2760	Spring - Extension	2	43	55-4300	Decal	1
22	56-3370	Bracket - Spring	2				



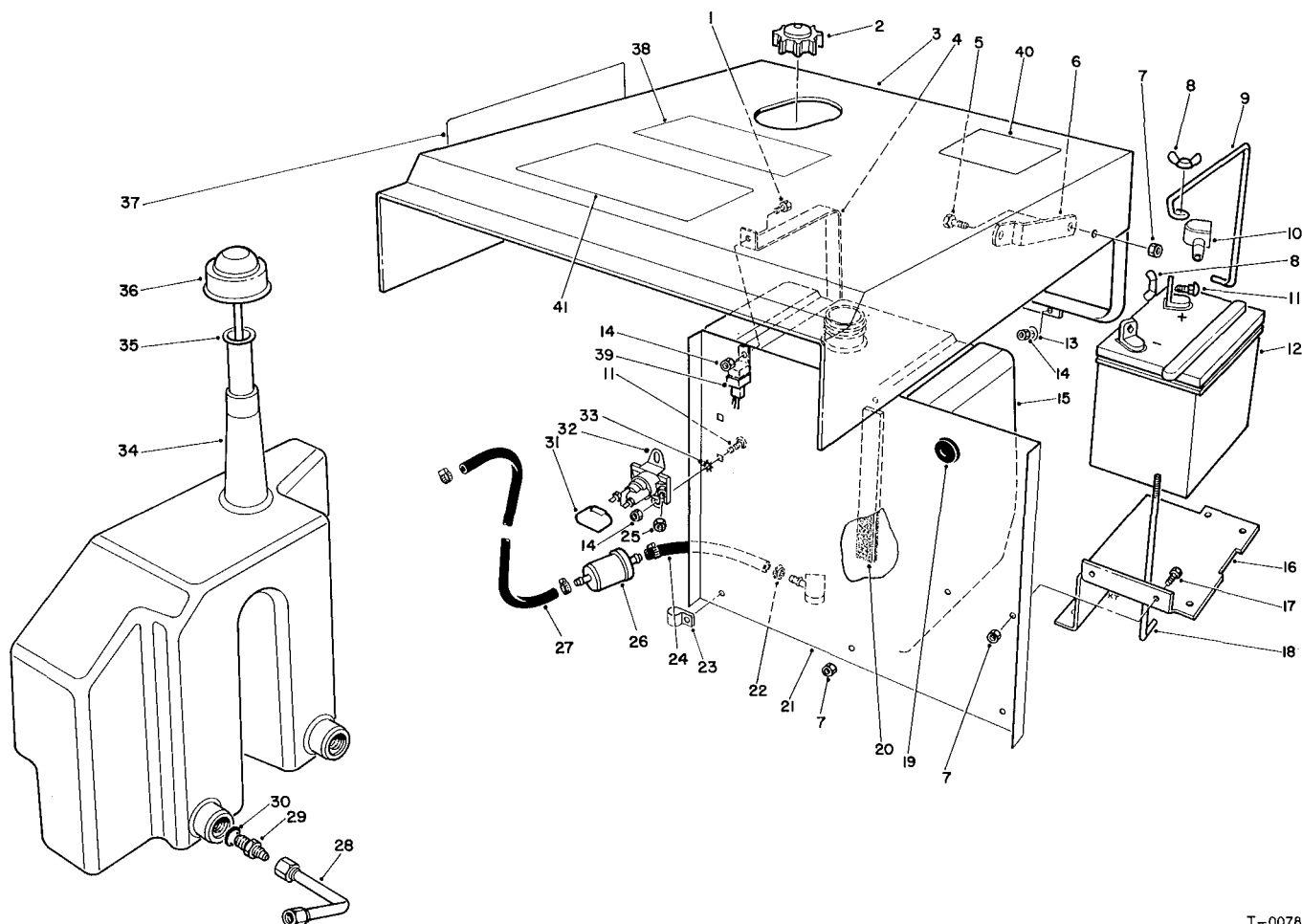
T-0077

HYDRAULIC LIFT CYLINDER NO. 54-0150

Ref. No.	Part No.	Description	No. Used
1†		Barrel	1
2	32152-10	Nut - Lock	1
3	54-0300	Piston	1
4		Uniring	1
5		"O"Ring	1
6	54-0310	Head	1
7		"O"Ring	1
8		Washer - Backup	1

Ref. No.	Part No.	Description	No. Used
9		"O"Ring	1
10		Washer - Backup	1
11		Seal - Dust	1
12	43-5220	Ring - Retaining	1
13	54-0280	Shaft	1
*	54-0290	Seal Repair Kit (Incl. Ref. #4, 5 & 7-11)	1

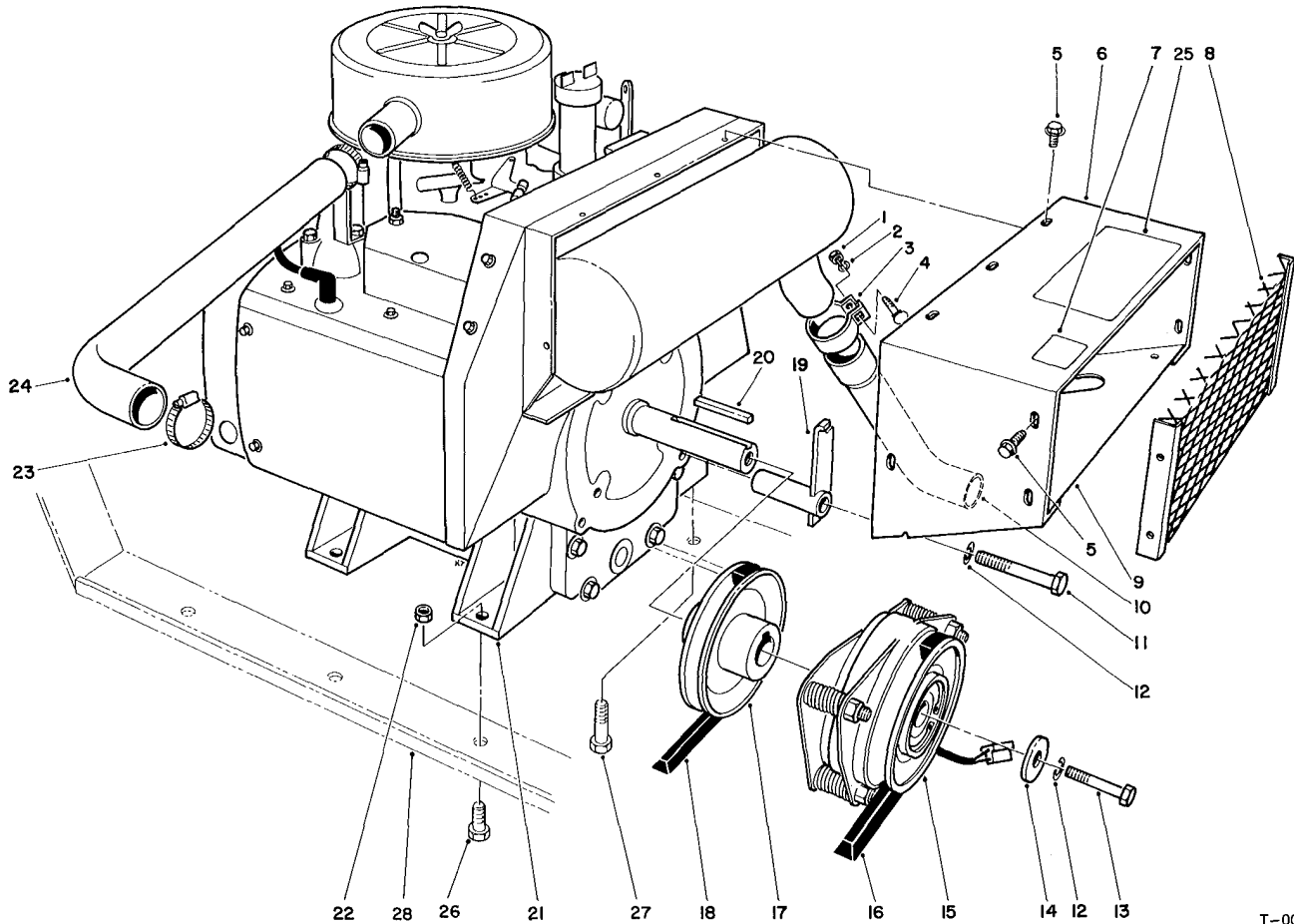
* Not Illustrated



T-0078

HOOD, FUEL TANK & HYDRAULIC RESERVOIR ASSEMBLY

Ref. No.	Part No.	Description	No. Used	Ref. No.	Part No.	Description	No. Used
1	321-3	Screw- Hex. Hd.	2	23	2412-108	"R"Clamp	1
2	55-3570	Cap - Fuel	1	24	47-2963	Hose - Fuel	1
3	54-2400	Hood	1	25	3219-14	Nut	1
4	54-1880	Strap - Fuel Tank	2	26	38-8000	Filter - Fuel	1
5	322-3	Screw- Hex. Hd.	2	27	66-1600	Hose - Fuel	1
6	54-1860	Stop - Hood Upper	2	28	54-2310	Hydraulic Tube Assembly Transmission to Reservoir	1
7	3296-29	Nut - Hex.	9	29	353-385	Fitting - Hydraulic Straight (Incl. Ref. #30)	2
8	32103-22	Nut - Wing	3	30	237-42	"O"Ring	2
9	54-1260	Clamp - Battery	1	31	54-2300	Cover - Solenoid	1
10	77-0981	Boot - Terminal	1	32	47-1910	Solenoid	1
11	3229-1	Bolt - Carriage	4	33	3255-7	Washer - Ext. Tooth	4
12	82-4640	Battery	1	34	54-2470	Reservoir - Hydraulic	1
13	3256-1	Washer	4	35	29-0590	Screen	1
14	3296-42	Nut - Lock	8	36	36-4950	Cap - Oil	1
15	62-4040	Tank - Fuel	1	37	74-0890	Decal - ProLine 118	2
16	54-1850	Support - Battery	1	38	27-7310	Decal - Refueling	1
17	322-4	Screw- Hex. Hd.	2	39	63-7590	Relay	1
18	12-5950	Rod - Battery Support	1	40	72-7820	Decal - Service	1
19	237-100	Grommet	1	41	68-7330	Decal - Danger	1
20	54-1890	Foam - Tank	2				
21	54-1840	Shield - Heat	1				
22	2412-36	Clamp - Hose	4				

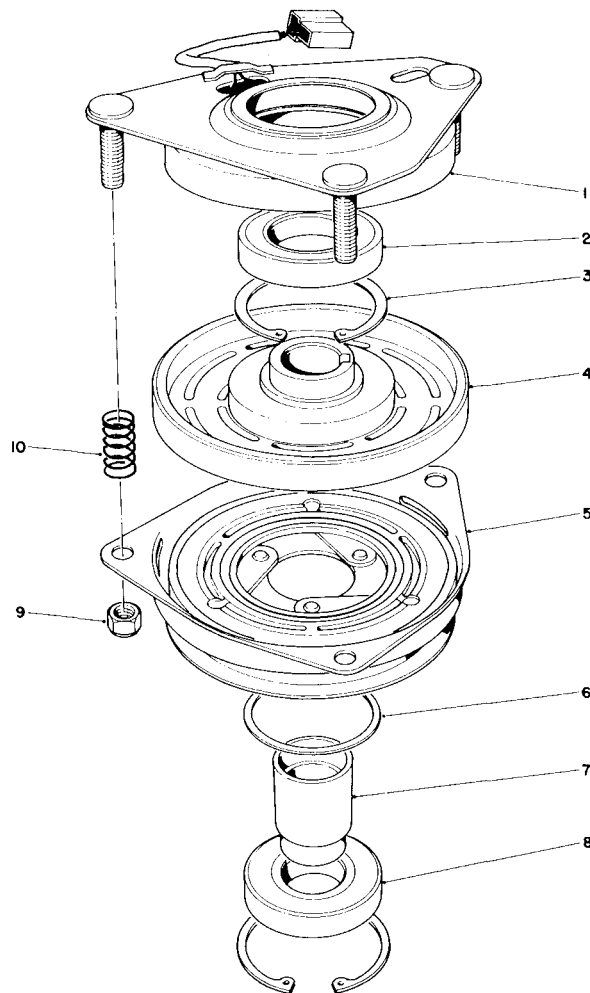


T-0079

ENGINE ASSEMBLY

Ref. No.	Part No.	Description	No. Used
1	3217-6	Nut - Hex.	1
2	3253-4	Washer - Lock	1
3	55-8660	Clamp Assembly (Incl. Ref. #1, 2 & 4)	1
4	3230-3	Bolt - Carriage	1
5	46-8560	Screw - Thread Forming	11
6	54-2480	Duct - Engine	1
7	63-8440	Decal - Hot	1
8	54-0950	Screen	1
9	54-0990	Duct - Bottom	1
10	54-2290	Pipe - Exhaust	1
11	324-11	Screw - Hex. Hd.	1
12	3253-6	Washer - Lock	2
13	3212-24	Screw - Hex. Hd.	1
14	44-8160	Washer - Flat	1

Ref. No.	Part No.	Description	No. Used
15	54-0220	Clutch Assembly	1
16	54-1380	"V" Belt	1
17	54-2330	Pulley - Engine	1
18	54-1390	"V" Belt	1
19	54-2160	Bracket - Anchor	1
20	5-0930	Key - Square	1
21	14-7279	Engine - Kohler Model No. M18QS-24657	1
22	3296-44	Nut - Hex.	3
23	2412-3	Clamp - Hose	2
24	54-1780	Hose - Air Cleaner	1
25	72-7820	Decal - Service	1
26	323-7	Screw	3
27	11-0590	Screw	1
28		Mount - Engine (Ref.)	2

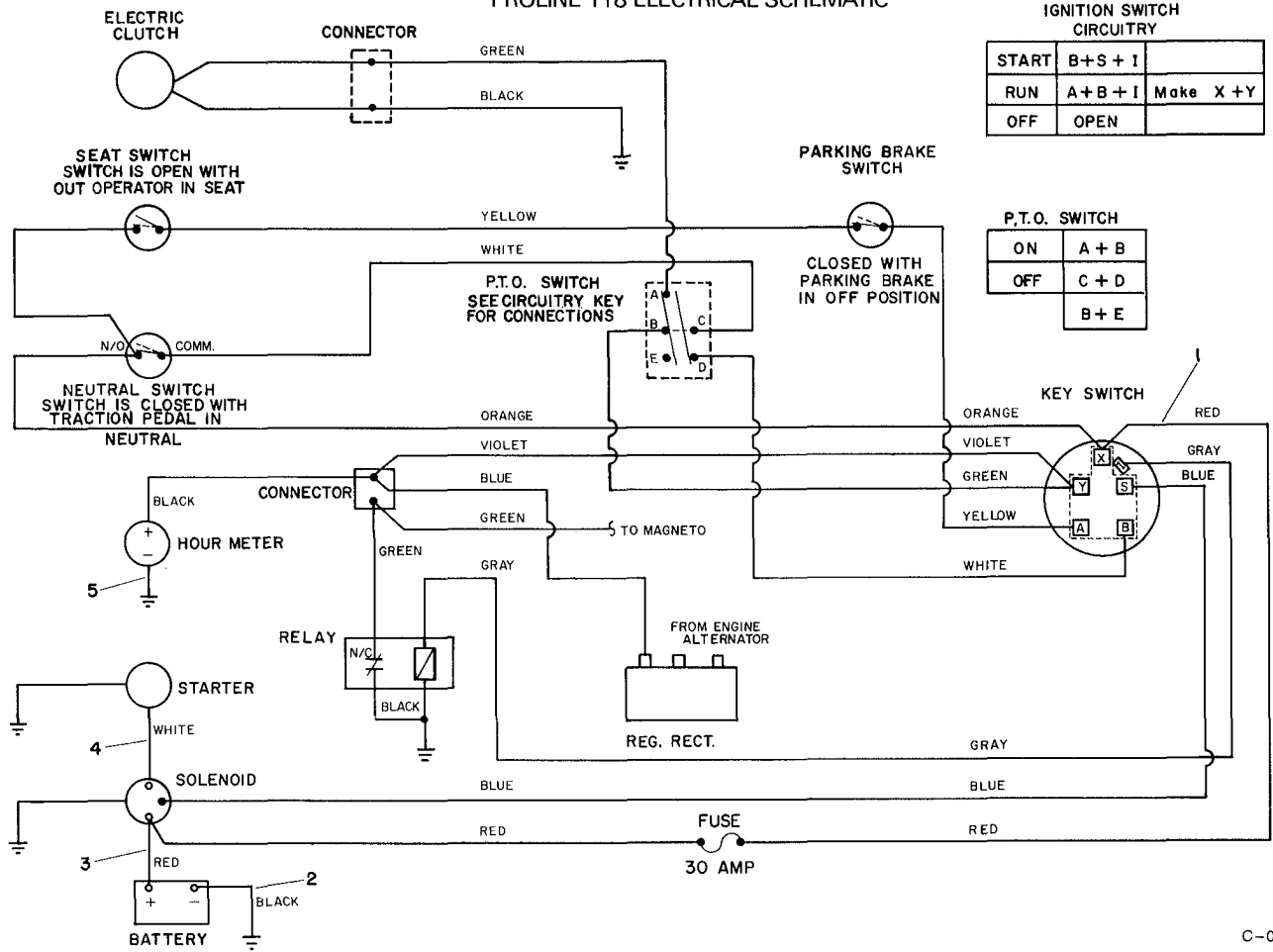


T-0080

CLUTCH ASSEMBLY NO. 54-0220

Ref. No.	Part No.	Description	No. Used	Ref. No.	Part No.	Description	No. Used
1	54-0230	Field Assembly (Incl. Ref. #2 & 3)	1	6	44-8330	Spacer - Bearing	1
2	251-292	Bearing - Field	1	7	44-8340	Collar - Bearing	1
3	44-8310	Ring - Retaining	2	8	251-291	Bearing - Pulley	1
4	44-8360	Field Coil, Rotor & Bearing (Incl. Ref. #1)	1	9	3296-6	Nut - Lock	3
5	44-8370	Armature & Pulley Assembly (Incl. Ref. #3, 6, 7 & 8)	1	10	44-8320	Spring	3

PROLINE 118 ELECTRICAL SCHEMATIC

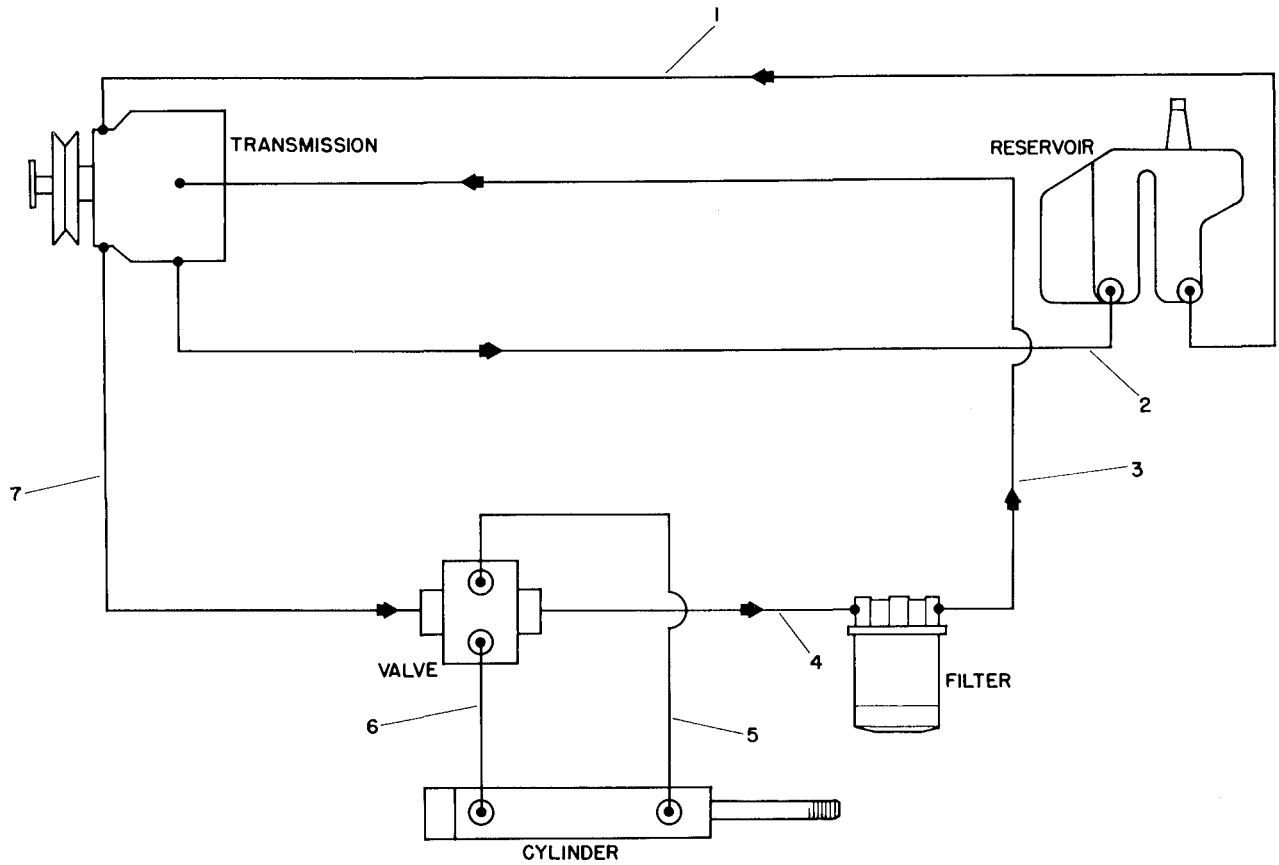


C-0511

ELECTRICAL SCHEMATIC

Ref. No.	Part No.	Description	No. Used
1	92-1770	Harness - Wire	1
2	28-3892	Wire Assembly (Ground)	1
3	54-2030	Wire Assembly	1

Ref. No.	Part No.	Description	No. Used
4	54-2031	Wire Assembly	1
5	82-8640	Wire Assembly	1

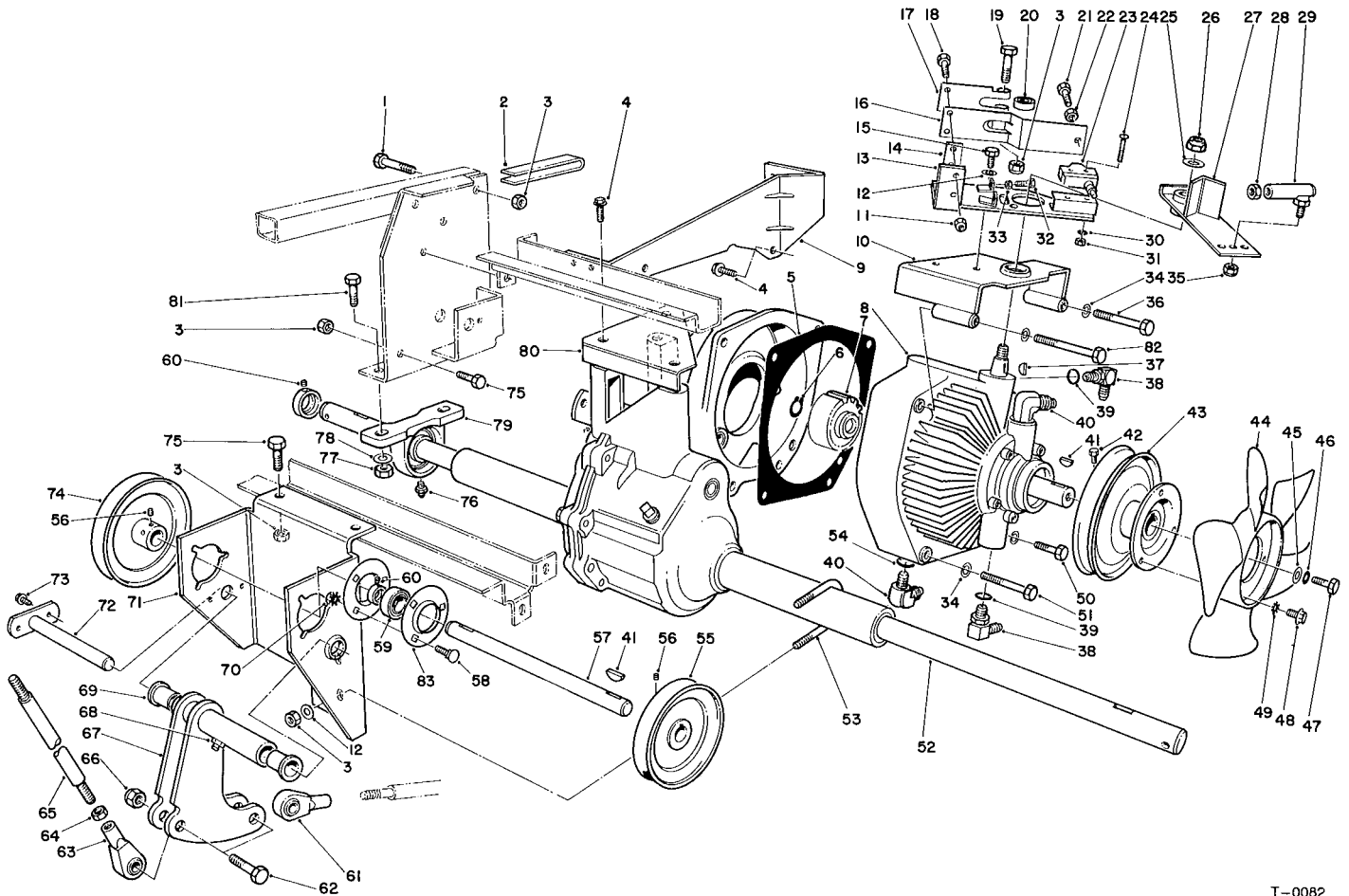


T-0084

HYDRAULIC SCHEMATIC

Ref. No.	Part No.	Description	No. Used
1	56-3390	Hydraulic Hose Assembly Reservoir to Transmission	1
2	54-2310	Hydraulic Tube Assembly	1
3	54-2580	Hydraulic Hose Assembly Filter to Transmission	1
4	54-2570	Hydraulic Hose Assembly Valve to Filter	1

Ref. No.	Part No.	Description	No. Used
5	54-2610	Hydraulic Hose Assembly Cylinder to Valve	1
6	54-2620	Hydraulic Hose Assembly Cylinder to Valve	1
7	54-2590	Hydraulic Hose Assembly Transmission to Valve	1

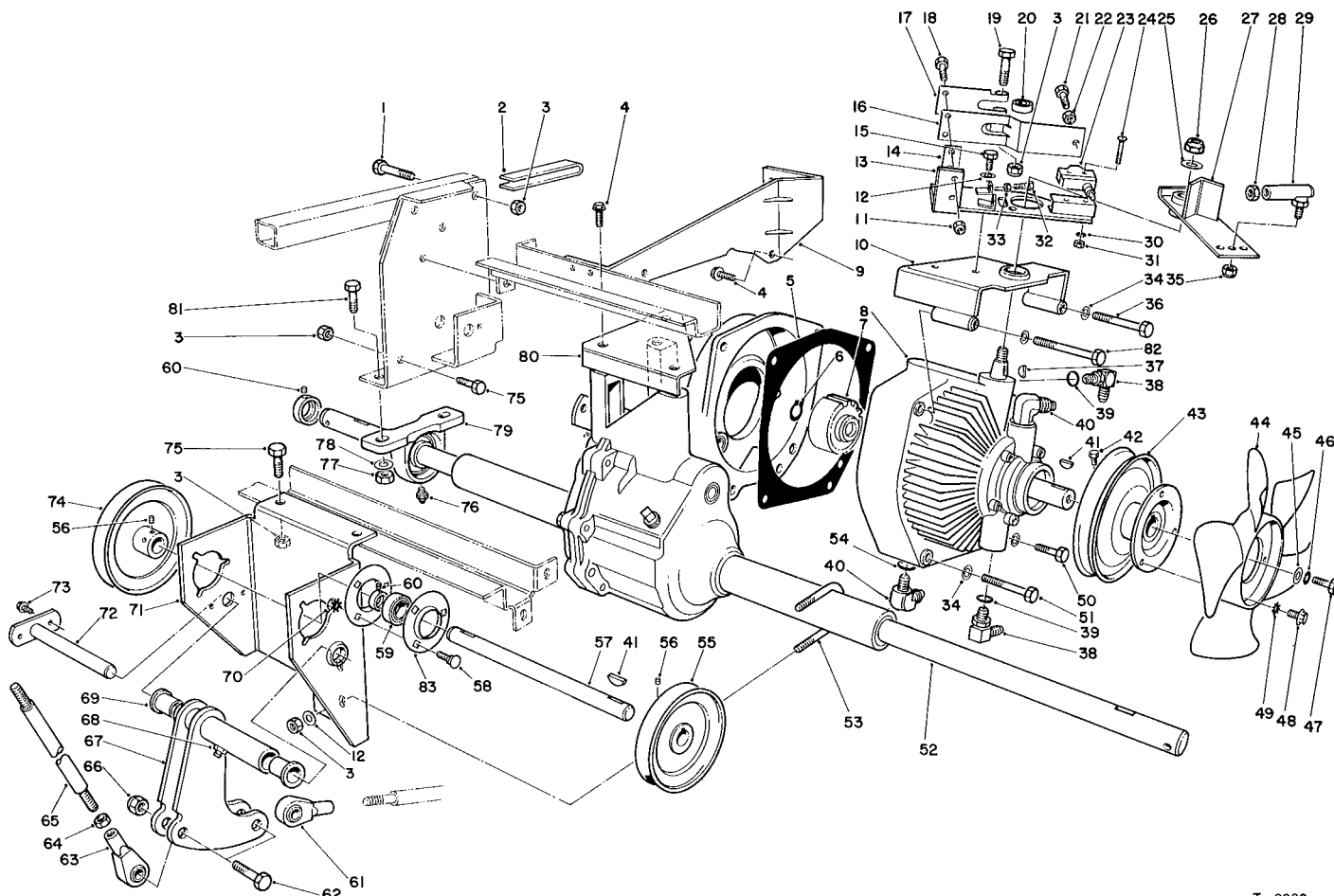


T-0082

TRANSMISSION & DIFFERENTIAL ASSEMBLY

Ref. No.	Part No.	Description	No. Used
1	322-11	Screw - Hex. Hd.	4
2	80-3750	Spacer	2
3	3296-29	Nut - Lock	13
4	3234-1	Screw - Hex. Flange Hd.	5
5	55-4320	Gasket	1
6	32120-64	Ring - Snap	1
7	54-0320	Gear	1
8	54-0080	Transmission - Hydrostatic	1
9	59-1620	Bracket - Transaxle	1
10	54-2550	Control - Traction	1
11	3296-42	Nut - Lock	2
12	3256-23	Washer - Flat	4
13	66-1430	Plate - Traction	1
14	51-3150	Shim - Spring Arm	1
15	322-3	Screw - Hex. Hd.	2
16	29-6170	Spring - Extension	1
17	29-6150	Spring - Leaf	1
18	321-4	Screw - Hex. Hd.	2
19	322-7	Screw - Hex. Hd.	1
20	251-259	Bearing	1
21	3210-5	Screw - Hex. Hd.	1
22	3220-2	Nut - Hex. Jam	1
23	29-6162	Switch	1
24	3249-11	Screw - Round Hd.	2
25	3256-26	Washer - Flat	1
26	3296-25	Nut - Lock	1

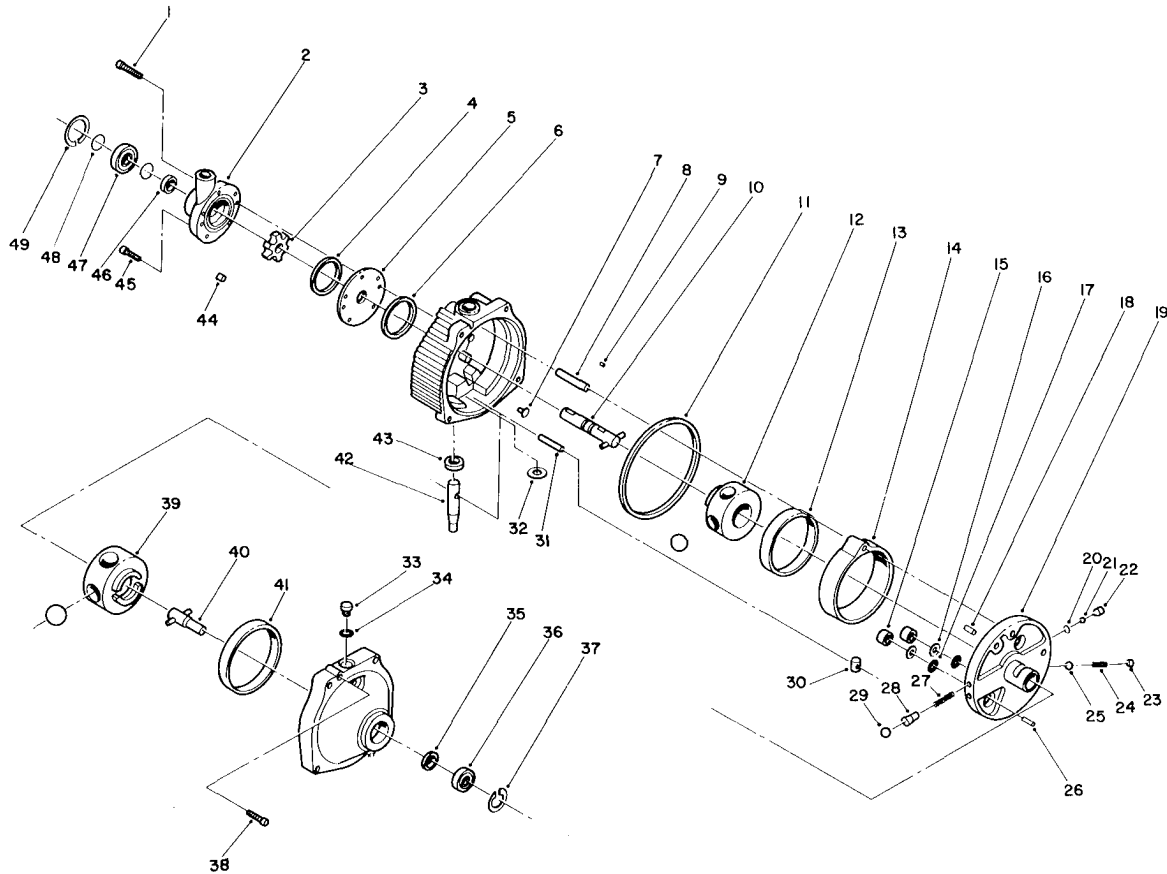
Ref. No.	Part No.	Description	No. Used
27	66-1420	Lever - Traction	1
28	3220-1	Nut - Hex. Jam	1
29	2411-34	Joint - Ball	1
30	3254-9	Washer - Lock	2
31	3217-16	Nut - Brass Hex.	2
32	322-6	Screw - Hex. Hd.	2
33	3218-2	Nut - Jam	2
34	3253-5	Washer - Lock	4
35	3296-3	Nut - Lock	1
36	323-23	Screw - Hex. Hd.	1
37	3257-24	Key - Woodruff	1
38	353-511	Fitting - Hydraulic 90° (Incl. Ref. #39)	2
39	237-79	"O"Ring	2
40	353-370	Fitting - Hydraulic 90° (Incl. Ref. #54)	2
41	3257-5	Key - Woodruff	3
42	3241-2	Screw - Set	2
43	54-0930	Pulley - Transmission	1
44	54-0240	Fan	1
45	3256-55	Washer	1
46	3253-3	Washer - Lock	1
47	321-2	Screw - Hex. Hd.	1
48	32144-19	Screw - Round Hd.	3
49	3255-5	Washer - Lock ETLW	3
50	323-13	Screw - Hex. Hd.	1



T-0082

TRANSMISSION & DIFFERENTIAL ASSEMBLY (Continued)

Ref. No.	Part No.	Description	No. Used	Ref. No.	Part No.	Description	No. Used
51	323-16	Screw - Hex. Hd.	1	68	302-49	Fitting - Grease	1
52	13-5969	Differential Assembly	1	69	46-6680	Bushing - Flanged	2
53	54-8970	Bolt - U	1	70	32149-1	Nut - Lock	6
54	237-80	"O"Ring	2	71	60-9130	Bracket - Jackshaft	1
55	54-2380	Pulley - Input	1	72	59-1470	Shaft - Bellcrank	1
56	3241-1	Screw - Set	4	73	46-8560	Screw - Thread Forming	2
57	54-1600	Jackshaft	1	74	54-2390	Pulley - Output	1
58	3230-1	Bolt - Carriage	6	75	322-4	Screw - Hex. Hd.	6
59	251-288	Bearing w/Collar	2	76	302-2	Fitting - Grease	2
60	3245-35	Screw - Set	4	77	33296-44	Nut - Lock	4
61	251-304	End - Rod	1	78	3256-3	Washer - Flat	4
62	324-7	Screw - Hex. Hd.	2	79	72-4060	Bearing Assembly	2
63	251-305	End - Rod	1	80	60-8990	Plate - Transaxle	1
64	3220-4	Nut - Hex. Jam	2	81	323-8	Screw - Hex. Hd.	4
65	54-1490	Rod - Steering	1	82	323-40	Screw - Hex. Hd.	1
66	32152-9	Nut - Lock	2	83	251-341	Flange - Bearing	4
67	54-2060	Bellcrank Assembly (Incl. Ref. #68 & 69)	1				

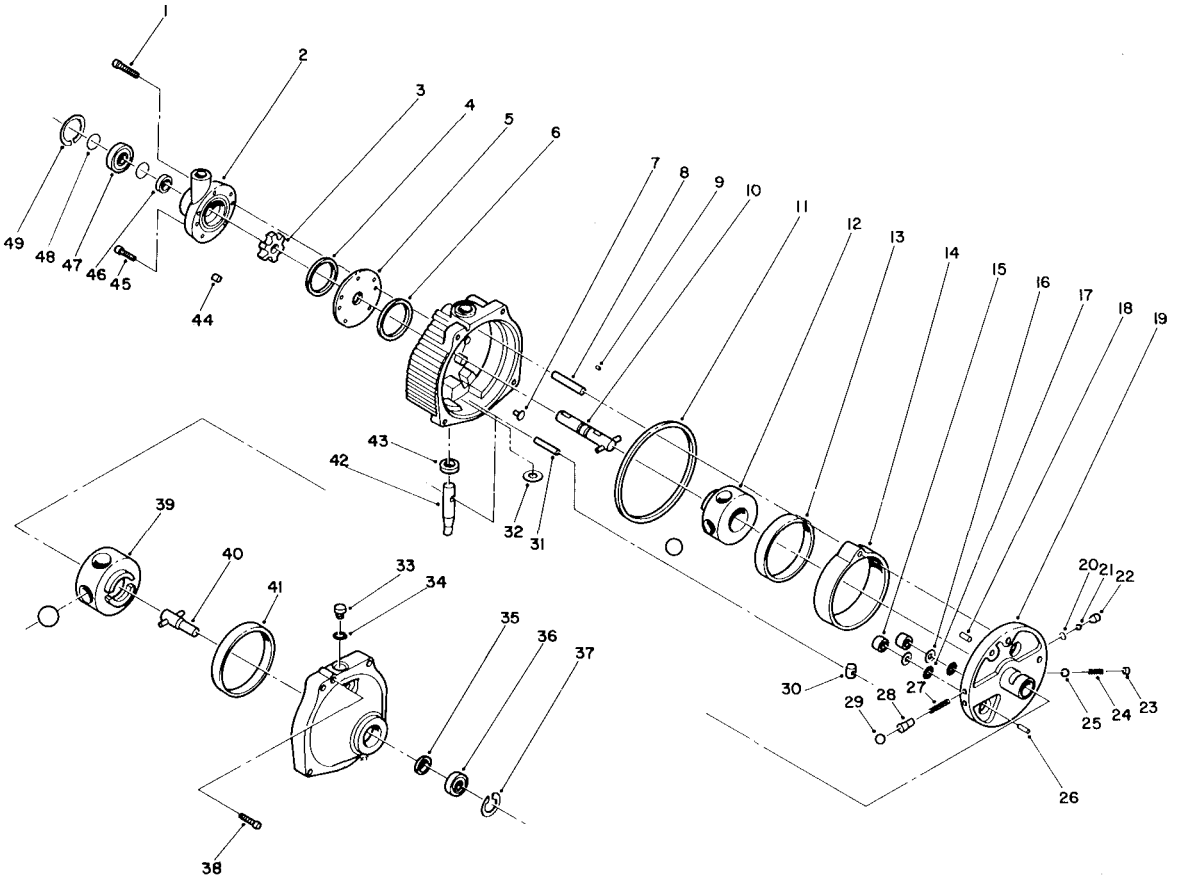


T-0883

HYDROSTATIC TRANSMISSION ASSEMBLY

Ref. No.	Part No.	Description	No. Used
1	56-2800	Screw - Hex. Socket Hd.	1
2	56-2830	Charge Pump Assembly (Incl. Ref. #1)	1
3	56-3120	Carrier	1
4	56-2850	Ring - Seal	1
5	56-2860	Plate - Pump	1
6	56-2870	Ring - Seal	1
7	56-2880	Button	2
8	56-2890	Pin - Dowel	1
9	56-2900	Pin - Drive	1
10	56-2910	Input Shaft Assembly	1
11	56-2920	Ring - Seal	1
12	56-2930	Pump Rotor & Ball Assembly	1
13		Race - Pump	1
14	56-2940	Cam Ring Assembly (Incl. Ref. #13)	1
15	56-2950	Piston	2
16	56-2960	Ring - Backup	2
17	56-2970	"O" Ring	2
18	56-2980	Pin - Coil	1
19	56-2990	Pintle Assembly (Incl. Ref. #15-18, 20, 22-26 & 27-29)	1
20	56-3000	Ring - Retaining	2
21	56-3010	Ball	2
22	56-3020	Body - Check Valve	2

Ref. No.	Part No.	Description	No. Used
23	56-3050	Plug - Relief Valve	1
24	56-3040	Spring - Relief Valve	1
25	56-3030	Ball	1
26	56-3060	Pin - Dowel	1
27	56-3180	Spring - Valve	2
28	56-3200	Body - Valve	2
29	56-3210	Ball	2
30	56-3170	Insert - Cam Ring	1
31		Dowel	1
32		Washer - Control Shaft	1
33	56-3250	Plug Assembly (Incl. Ref. #34)	1
34	56-3260	"O" Ring	1
35	56-3270	Seal - Oil	1
36	56-3280	Bearing - Output	1
37	56-3290	Ring - Retaining	1
38	56-3300	Screw - Hex. Socket Hd.	2
39	56-3220	Motor Rotor & Ball Assembly	1
40	56-3230	Output Shaft Assembly	1
41	56-3240	Race - Motor	1
42	56-3140	Control Shaft Kit (Incl. Ref. #31 & 32)	1
43	56-3130	Seal - Oil	1
44	56-3110	Pin - Roll	6
45	56-3100	Screw - Hex. Socket Hd.	4
46	56-2820	Seal - Oil	1



T-0083

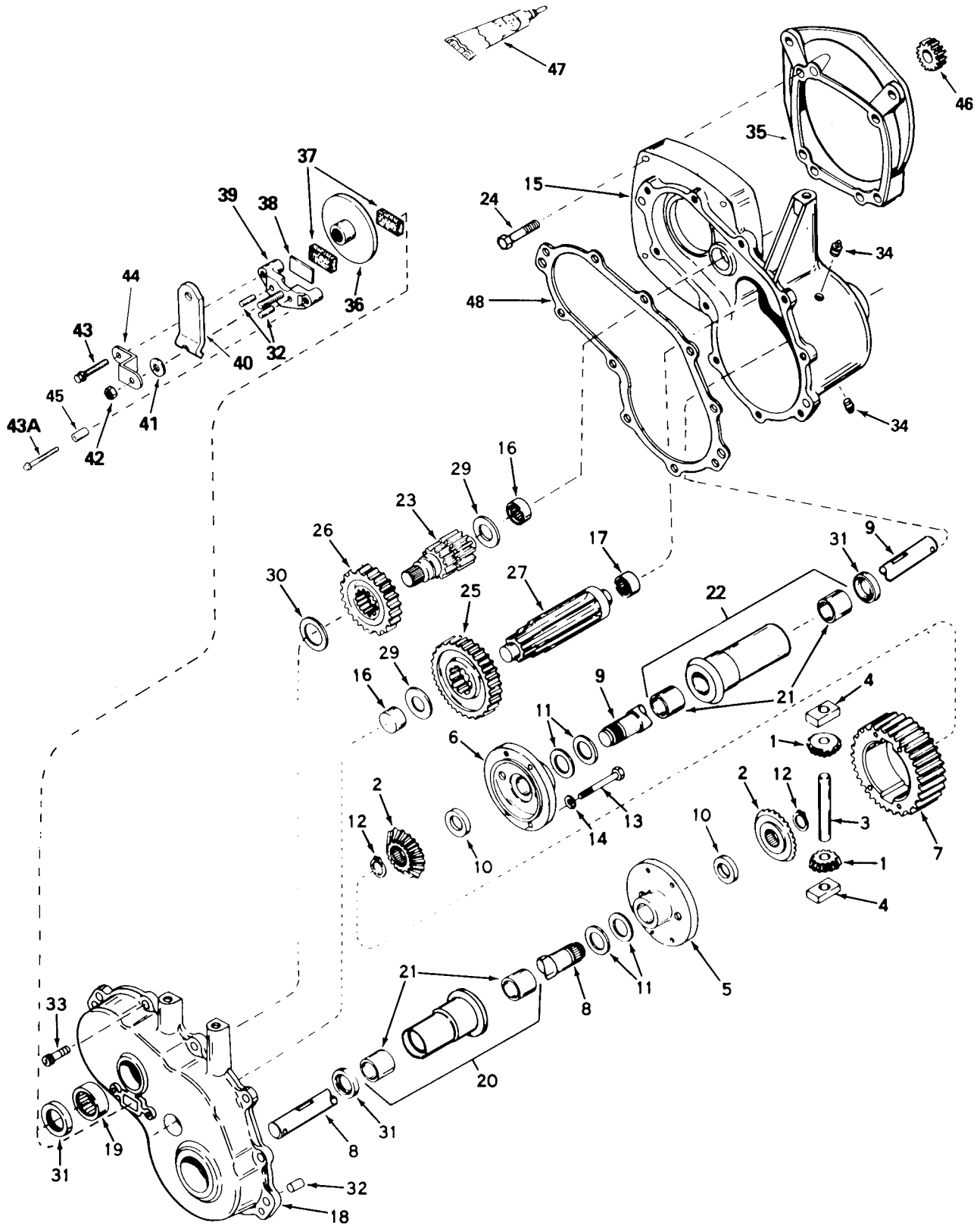
HYDROSTATIC TRANSMISSION ASSEMBLY (Continued)

Ref. No.	Part No.	Description	No. Used
47	56-2810	Bearing - Input	1
48	56-3090	Ring - Retaining	2
49	56-3080	Ring - Retaining	1

Ref. No.	Part No.	Description	No. Used
*	56-3310	Over Haul Seal Kit (Incl. Ref. #4, 6, 11, 16, 17, 34, 35, 43 & 46)	1

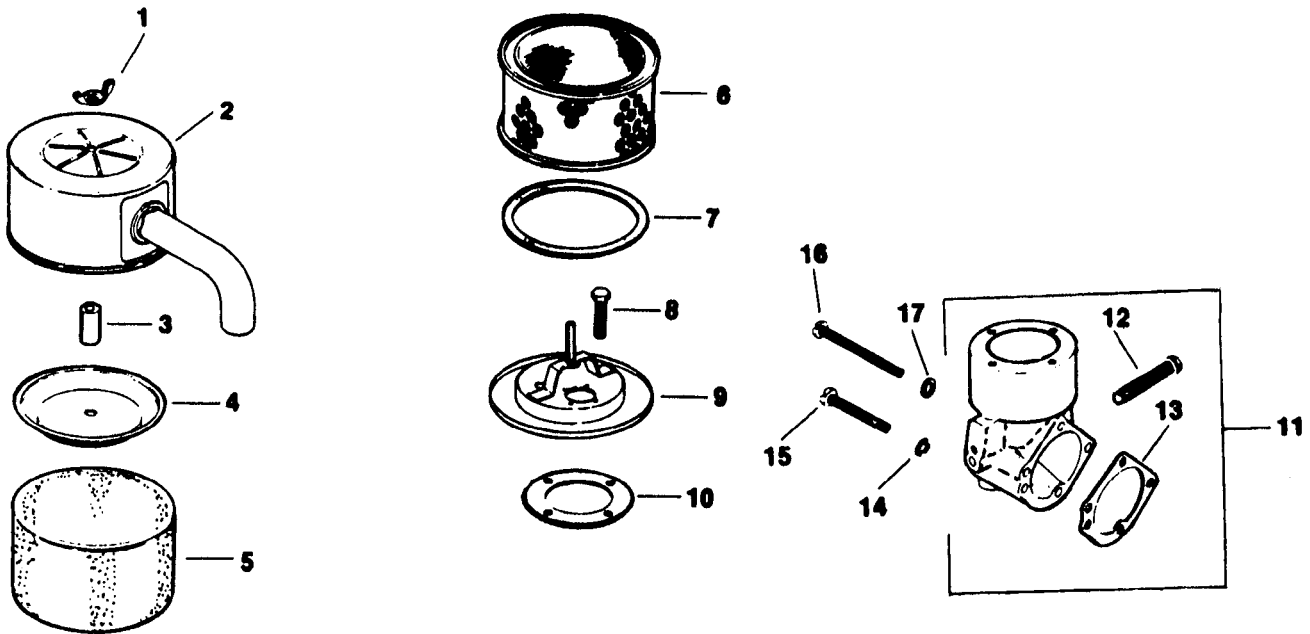
* Not Illustrated

DIFFERENTIAL ASSEMBLY NO. 1310-001A



DIFFERENTIAL ASSEMBLY NO. 1310-001A

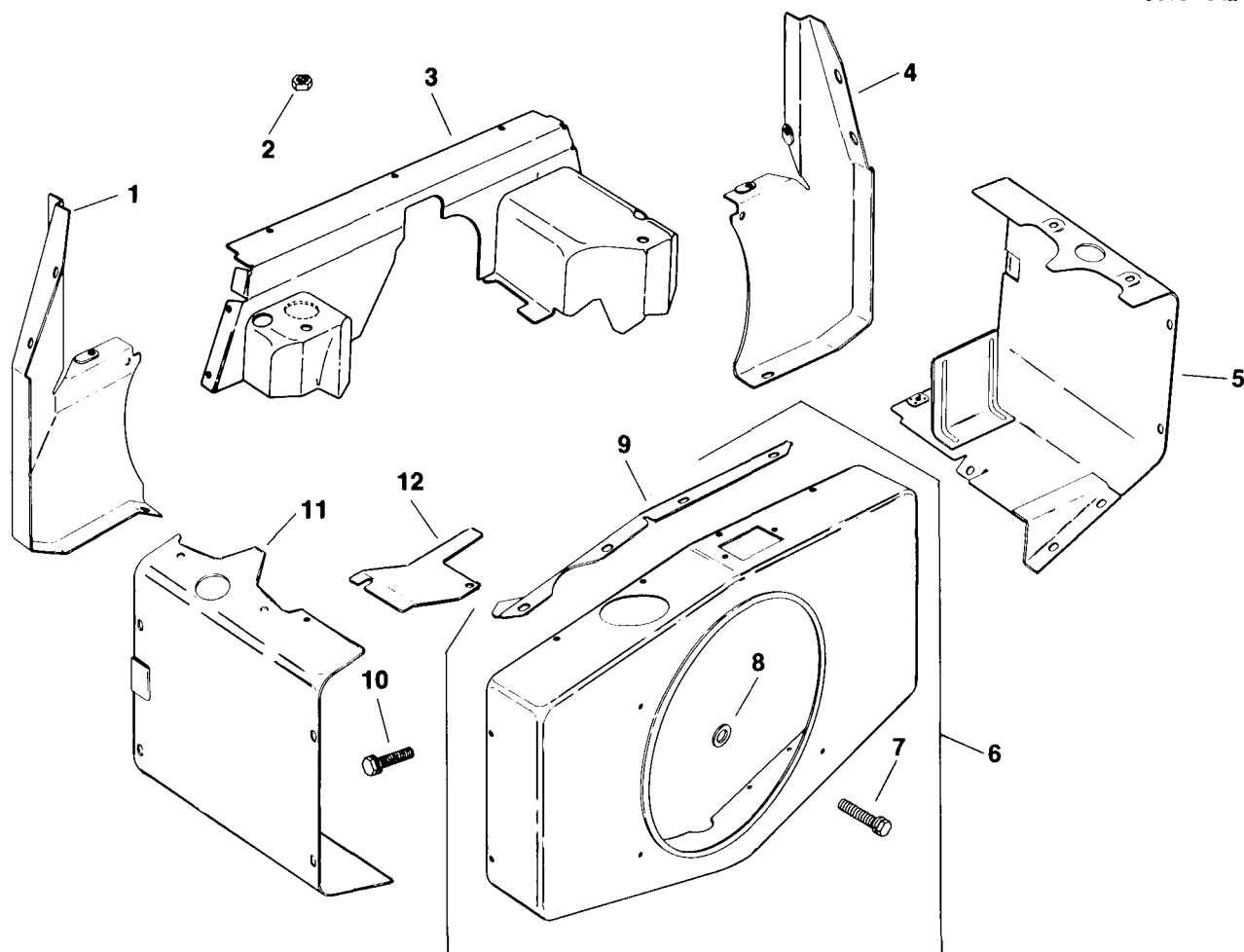
Ref. No.	Part No.	Description	No. Used	Ref. No.	Part No.	Description	No. Used
1	778197	Pinion – Bevel	1	23	776245	Shaft – Brake	1
2	778198	Gear – Bevel	1	24	79-2120	Screw – Hex. Hd.	1
3	786019	Pin – Drive	1	25	778036	Gear – Output	1
4	786027	Block – Drive	1	26	778037	Gear – Idler	1
5	774028A	Carrier – Differential	1	27	776244	Shaft – Output	1
6	774029A	Carrier – Differential	1	29	780001	Washer	1
7	778033A	Gear – Ring	1	30	780090	Washer	1
8	774607	Axle – 16-5/8"	1	31	788008	Seal – Oil	1
9	774608	Axle – 21-57/64"	1	32	786026	Pin – Dowel	1
10	780107	Washer	1	33	792046	Screw – Thread Forming	1
11	780042	Washer – Thrust	1	34	792010	Plug – Pipe	1
12	792018	Ring – Snap	1	35	786112	Plate – Adapter	1
13	792020	Screw – Hex. Hd.	1	36	790027	Disc – Brake	1
14	792006	Washer – Lock	1	37	790006	Pad – Brake	1
15	770080	Case Assembly (Incl. Ref. #16 & 17)	1	38	790007	Plate – Brake Pad	1
16	780013	Bearing – Needle	1	39	790025	Holder – Brake Pad	1
17	780088	Bearing – Needle	1	40	790010	Lever – Brake	1
18	772085	Cover Assembly (Incl. Ref. #16 & 19)	1	41	792076	Washer – Flat	1
19	780089	Bearing 0 Needle	1	42	792075	Nut – Lock	1
20	782041A	Housing Assembly – 6-5/8" (Incl. Ref. #21)	1	43	792073	Screw – Thread Forming	1
21	780054	Bushing	1	43A	792085	Screw – Thread Forming	1
22	782042A	Housing Assembly – 8-5/8" (Incl. Ref. #21)	1	44	786086	Bracket	1
				45	786066	Spacer	1
				46	778194	Gear – Spur 22T	1
				47	510334	Gasket Eliminator	1
				48	788044	Gasket	1



AIR INTAKE – GROUP 1

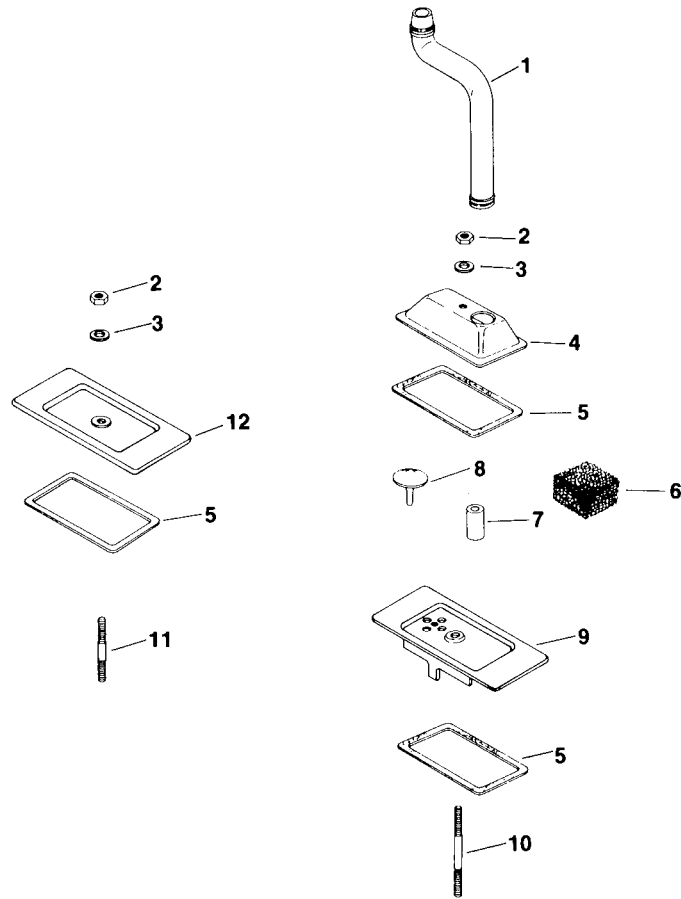
Ref. No.	Part No.	Description	No. Used
1	X-276-7	Nut – Wing	1
2	52 096 26	Cover – Air Cleaner	1
3	231032	Seal	1
4	52 082 04	Cover – Air Cleaner Element	1
5	45 083 01	Precleaner	1
6	45 083 02	Element – Air Cleaner	1
7	237423	Seal – Air Cleaner Cover	1
8	X-67-98	Screw – Hex. Washer Hd.	4
9	52 201 06	Base – Air Cleaner	1
10	277093	Gasket – Air Cleaner Base	1

Ref. No.	Part No.	Description	No. Used
11	52 754 01	Kit – Elbow (Incl. Ref. #12 & 13)	1
12	52 086 11	Screw – Cap Hex. Hd.	1
13	25 041 06	Gasket – Elbow	1
14	X-22-9	Washer – Lock	2
15	X-50-57	Screw – Round Hd.	2
16	X-50-37	Screw – Round Hd.	1
17	X-25-79	Washer – Plain	1
	25 113 07	Decal – Air Cleaner	1



BAFFLES & SHROUD – GROUP 2

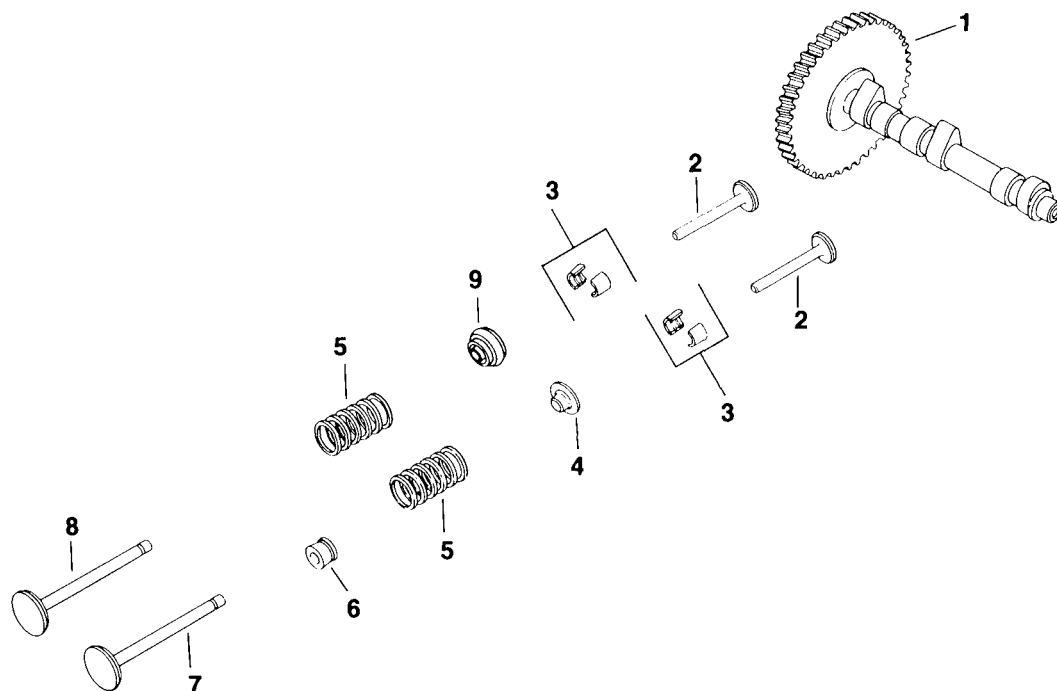
Ref. No.	Part No.	Description	No. Used	Ref. No.	Part No.	Description	No. Used
1	52 281 21	Duct – #1 Side Air	1	7	52 086 11	Screw – Self Tapping	2
2	X-82-2	Nut	2	8	52 468 16	Washer – Flat	2
3	52 282 01	Cover – Air Duct	1	9	X-67-83	Screw – Hex. Washer Hd.	32
4	52 281 09	Duct – #2 Side Air	1	10	52 063 21	Baffle – #2 Cylinder Head	1
5	52 063 33	Baffle – #1 Cylinder Head	1	11	52 063 01	Baffle – #2 Cylinder Top	1
6	52 755 71	Kit – Blower Housing (Incl. Ref. #7, 8 & 12)	1	12	52 217 01	Support – Upper Housing	1



BREATHER & VENT – GROUP 3

Ref. No.	Part No.	Description	No. Used
1	52 326 05	Hose – Breather	1
2	X-81-1	Nut – Hex.	2
3	X-25-12	Washer – Plain	2
4	52 096 08	Cover – #1 Upper Cyl. Valve	1
5	52 055 01	Gasket – Cover	3
6	231419	Filter – Breather	1

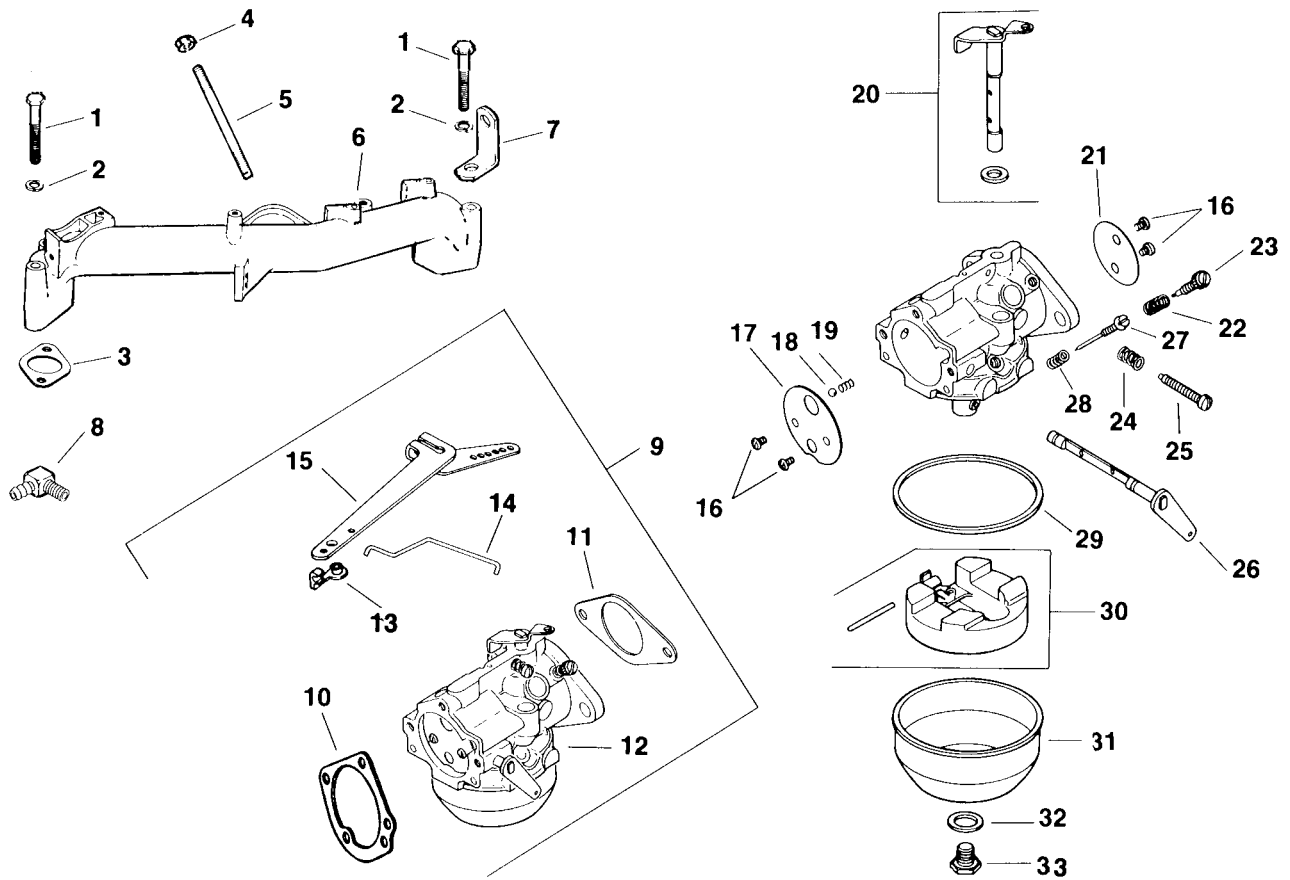
Ref. No.	Part No.	Description	No. Used
7	52 032 04	Seal – Breather	1
8	52 462 01	Valve – Breather	1
9	52 096 22	Cover – #1 Lower Cyl. Valve	1
10	275220	Stud – #1 Cyl. Valve Cover	1
11	X-352-39	Stud – #2 Cyl Valve Cover	1
12	52 096 18	Cover – #2 Cylinder Valve	1



CAMSHAFT & VALVES – GROUP 4

Ref. No.	Part No.	Description	No. Used
1	52 012 09	Camshaft	1
2	52 019 03	Tappet	4
3	41 755 10	Kit – Retainer	4
4	230011	Retainer – Intake Valve	2
5	25 098 01	Spring – Valve	4

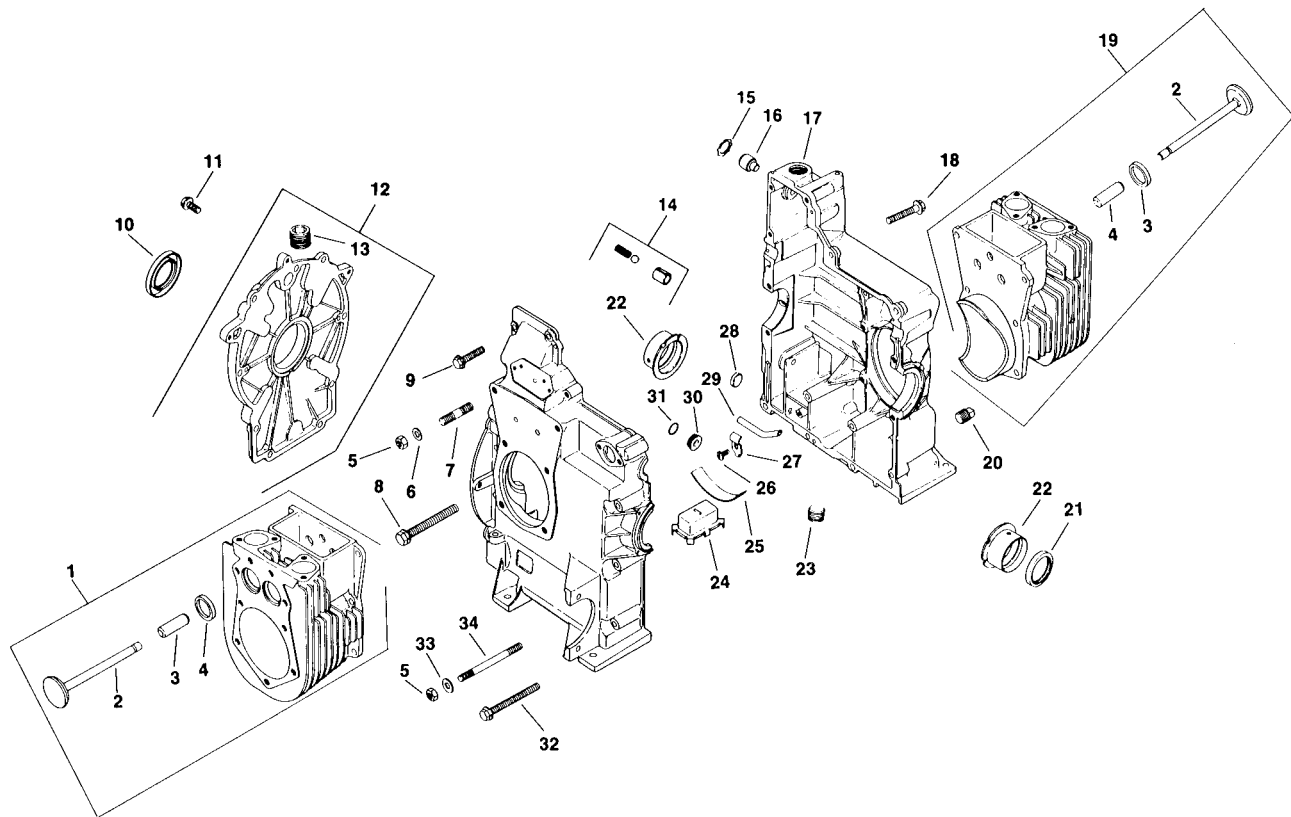
Ref. No.	Part No.	Description	No. Used
6	52 032 13	Seal – Intake Valve Stem	2
7	52 017 08	Valve – Intake	2
8	52 016 05	Valve – Exhaust	2
9	52 413 01	Rotator – Exhaust Valve	2



CARBURETOR – GROUP 5

Ref. No.	Part No.	Description	No. Used
1	X-6-8	Screw – Cap Hex. Hd.	4
2	X-21-1	Washer – Lock	4
3	52 041 09	Gasket – Intake	2
4	X-77-2	Nut	2
5	X-352-37	Stud	2
6	52 164 10	Manifold – Intake	1
7	52 445 02	Strap – Lifting	2
8	25 155 02	Connector – Hose	1
9	52 853 23	Kit – Carburetor w/Gasket (Incl. Ref. #10-33)	1
10	277069	Gasket – Air Cleaner	1
11	271030	Gasket – Carburetor	1
12	52 053 66	Carburetor (For Information Only, Not Available Separately)	1
13	25 158 09	Bushing – Governor Linkage	2
14	82 755 07	Kit – Governor Linkage (Incl. Ref. #13)	1
15	52 186 06	Arm – Governor	1

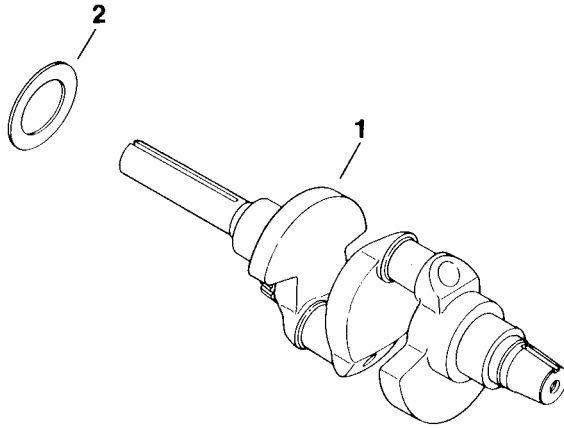
Ref. No.	Part No.	Description	No. Used
16	25 086 27	Screw – Throttle & Choke	4
17	25 146 03	Plate – Choke	1
18	25 194 01	Ball – Choke Friction	1
19	25 089 03	Spring – Choke Friction	1
20	52 144 18	Shaft – Throttle Lever & Seat	1
21	25 146 02	Plate – Throttle	1
22	25 089 02	Spring – Idle Fuel	1
23	25 368 01	Needle – Idle Fuel Adjust	1
24	25 089 04	Spring – Idle Speed	1
25	25 086 26	Screw – Idle Speed Adjust	1
26	52 090 12	Lever – Choke	1
27	25 368 03	Needle – Main Fuel	1
28	25 089 02	Spring – Main Fuel	1
29	25 041 04	Gasket – Bowl	1
30	25 757 09	Kit – Float	1
31	25 104 01	Bowl – Fuel	1
32	25 041 03	Gasket – Bowl	1
33	25 100 05	Screw – Bowl	1
	25 757 11	Carburetor Repair Kit	1



CRANKCASE – GROUP 7

Ref. No.	Part No.	Description	No. Used
1	82 755 17	Kit – #2 Cylinder Barrel (Incl. Ref. #2-4)	1
2	52 016 05	Valve – Exhaust	1
3	52 316 06	Guide – Valve	2
4	52 031 01	Insert – Valve Seat	2
5	X-82-2	Nut – Hex.	16
6	52 468 12	Washer – Flat	12
7	52 072 12	Stud – Step	12
8	25 086 13	Screw – Hex. Flange Hd.	2
9	25 086 10	Screw – Hex. Flange Hd.	3
10	X-583-5	Seal – Rear Oil	1
11	X-802-9	Screw – Hex. Washer – Hd.	9
12	52 755 57	Kit – Closure Plate (Incl. Ref. #13)	1
13	X-75-23	Plug – Hex. Socket	1
14	52 755 50	Kit – Oil Relief	1
15	X-269-43	Ring – Retaining	1
16	52 078 05	Shaft – Governor	1
17		Crankcase (Service With Shortblock No. 82 522 11)	1

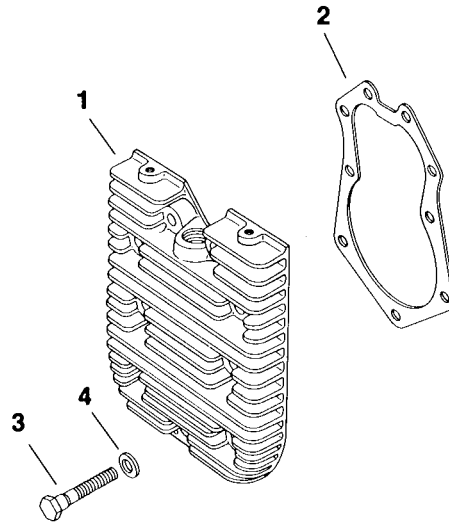
Ref. No.	Part No.	Description	No. Used
18	25 086 12	Screw – Hex. Flange Hd.	2
19	82 755 16	Kit – #1 Cylinder Barrel (Incl. Ref. #2-4)	1
20	X-75-10	Plug – Square Hd.	1
21	52 032 10	Seal – Front Oil	1
22	52 030 12	Bearing – Sleeve .020"	2
*	52 030 11	Bearing – Sleeve .010"	2
*	52 030 10	Bearing – Sleeve Std.	2
23	X-75-32	Plug – Hex. Socket	2
24	52 095 03	Housing – Oil Pickup	1
25	52 237 02	Clip – Spring	1
26	X-67-64	Screw – Hex. Washer Hd.	1
27	52 237 05	Clamp – Tube	1
28	X-702-15	Plug – Cup	1
29	52 123 10	Tube – Oil Pickup	1
30	52 139 08	Plug	1
31	52 141 02	Seal – O-Ring	1
32	25 086 11	Screw – Hex. Flange Hd.	6
33	41 468 01	Washer – Plain	4
34	X-352-33	Stud	2



CRANKSHAFT – GROUP 8

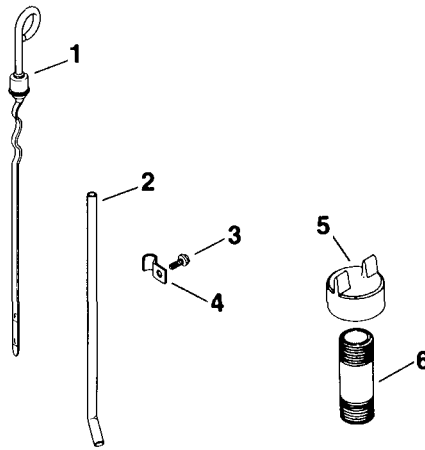
Ref. No.	Part No.	Description	No. Used
1	52 014 64	Creankshaft	1
2	52 468 03	Washer – Thrust	A/R

Ref. No.	Part No.	Description	No. Used
*	52 468 04	Washer – Thrust	1
*	52 468 05	Washer – Thrust	A/R



CYLINDER HEAD – GROUP 9

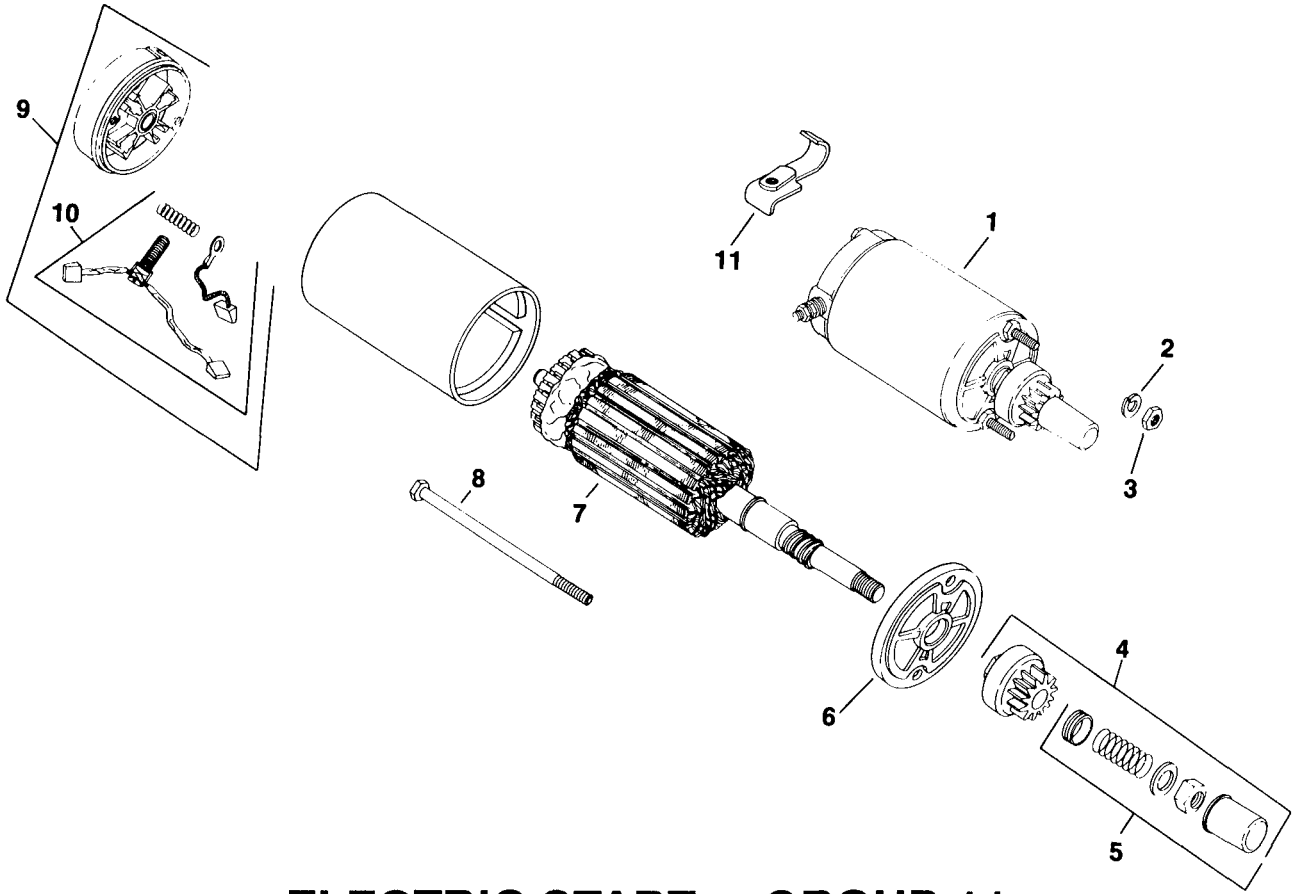
Ref. No.	Part No.	Description	No. Used	Ref. No.	Part No.	Description	No. Used
1	52 015 08	Head – Cylinder	2	3	41 086 02	Screw – Hex. Hd.	18
2	52 041 18	Gasket – Head	2	4	220534	Washer – Plain	18



DIPSTICK – GROUP 10

Ref. No.	Part No.	Description	No. Used
1	52 038 04	Blade – Dipstick	1
2	52 132 09	Tube – Oil Level	1
3	X-67-64	Screw	1

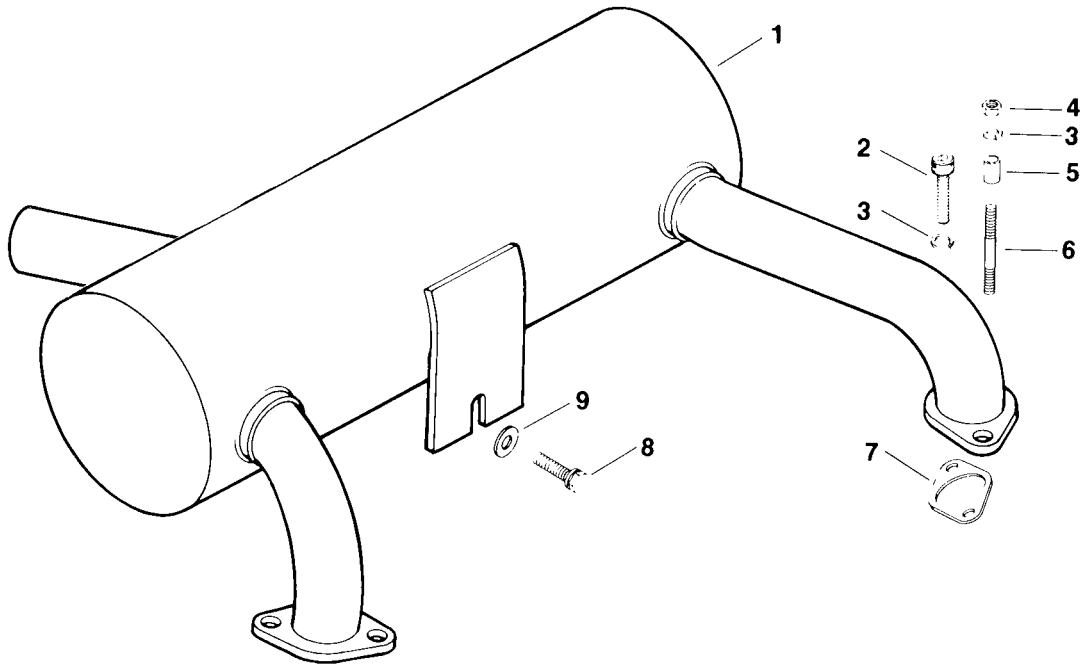
Ref. No.	Part No.	Description	No. Used
4	52 154 01	Clip – Tube	1
5	52 173 01	Cap – Pipe	1
6	46 136 02	Pipe – Oil Fill	1



ELECTRIC START – GROUP 11

Ref. No.	Part No.	Description	No. Used
1	52 098 06	Starter Assembly (Incl. Ref. #4-10)	1
2	X-20-1	Washer - Lock	2
3	X-81-1	Nut - Hex.	2
4	52 755 05	Kit - Drive (Incl. Ref. #5)	1
5	52 755 08	Kit - Drive Parts	1
6	52 227 01	Cap - Drive End	1

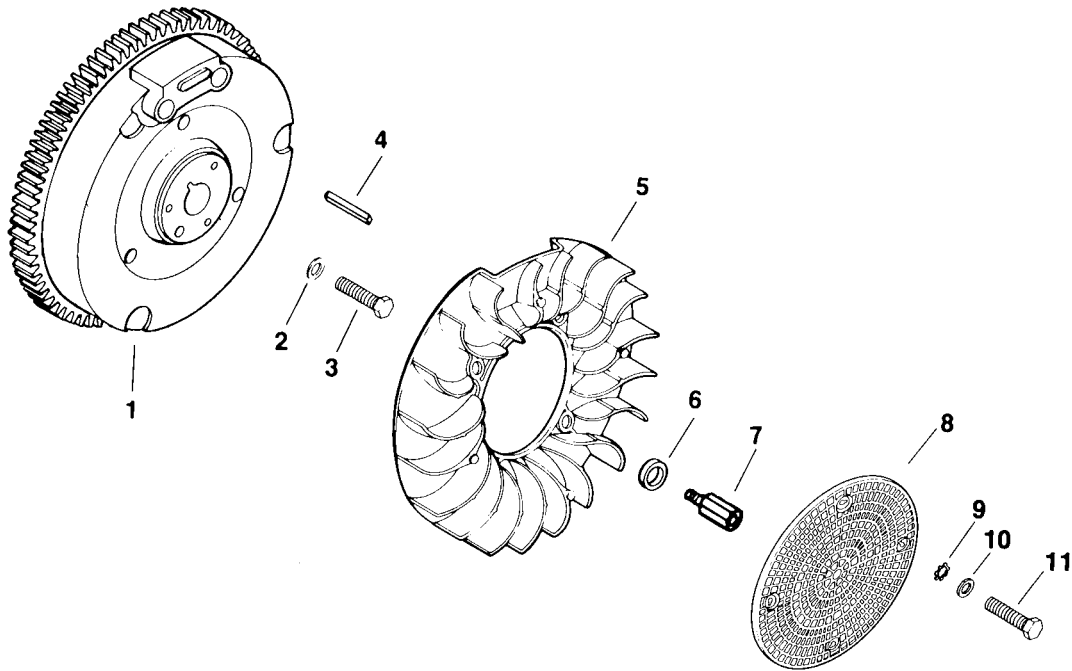
Ref. No.	Part No.	Description	No. Used
7	52 070 03	Armature	1
8	52 211 03	Bolt	2
9	52 227 07	Cap - Commutator End (Incl. Ref. #10)	1
10	52 755 15	Kit - Brush	1
11	52 126 09	Bracket - Mounting Nut	1
	25 450 03	Tag - Caution	1



EXHAUST – GROUP 12

Ref. No.	Part No.	Description	No. Used
1	52 068 08	Muffler	1
2	X-55-6	Screw – Hex. Socket Hd.	2
3	X-21-2	Washer – Lock	4
4	X-82-2	Nut – Hex.	2
5	52 112 08	Spacer	2

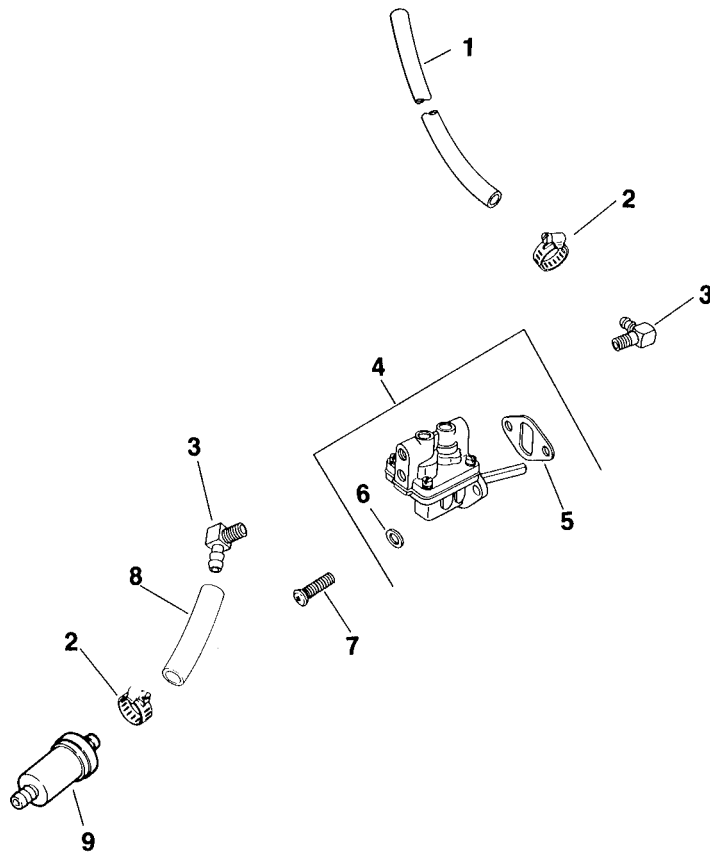
Ref. No.	Part No.	Description	No. Used
6	52 072 13	Stud	2
7	52 041 14	Gasket – Exhaust Manifold	2
8	X-132-5	Screw – Cap Hex. Hd.	2
9	X-25-73	Washer – Plain	1



FLYWHEEL – GROUP 13

Ref. No.	Part No.	Description	No. Used
1	52 025 36	Flywheel	1
2	52 468 15	Washer – Plain	1
3	25 086 24	Screw – Hex.	1
4	X-286-17	Key – Square	1
5	25 157 02	Fan	1
6	25 112 04	Spacer	4

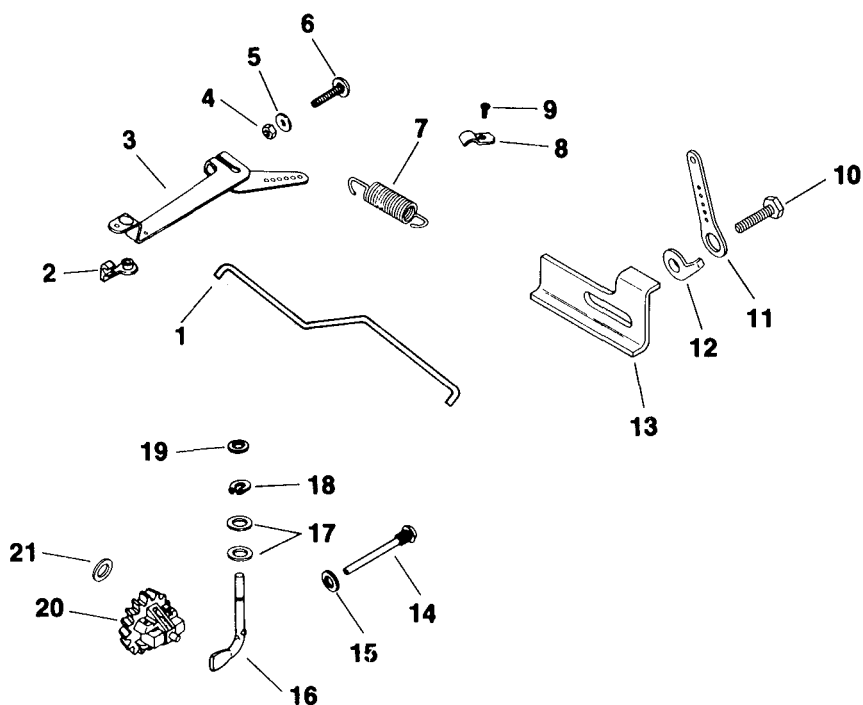
Ref. No.	Part No.	Description	No. Used
7	52 072 19	Stud	4
8	52 162 28	Screen – Grass	1
9	X-22-12	Washer – Lock	4
10	X-25-52	Washer – Plain	4
11	47 086 08	Screw – Posidrive	4



FUEL PUMP – GROUP 14

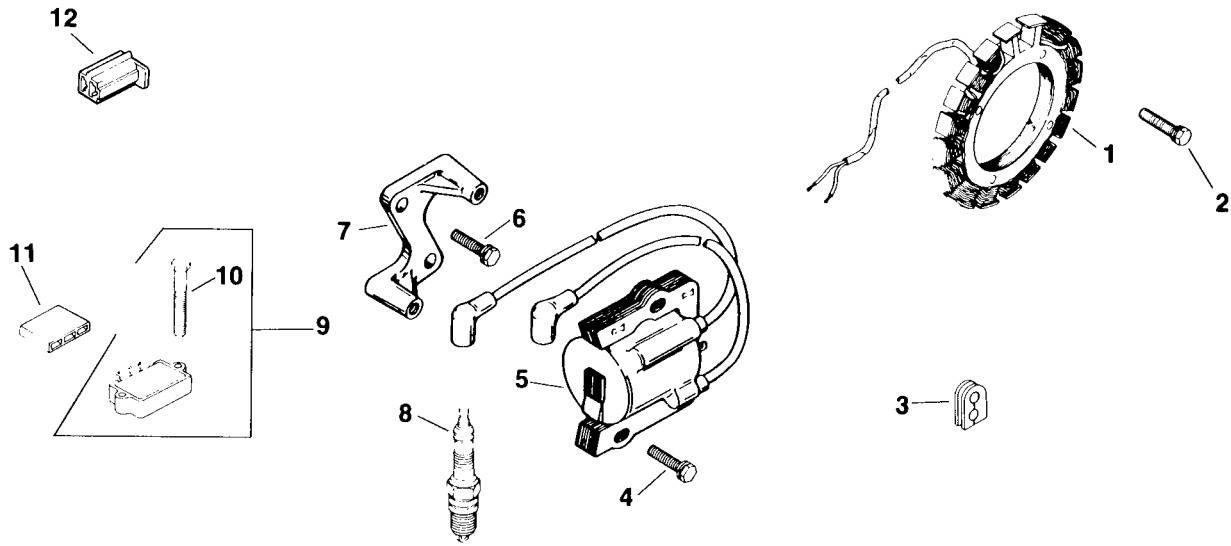
Ref. No.	Part No.	Description	No. Used
1	52 353 04	Line – Fuel	1
2	X-426-9	Clamp – Hose	4
3	25 155 02	Connector – Hose	2
4	52 559 01	Fuel Pump Assembly (Incl. Ref. #5 & 6)	1

Ref. No.	Part No.	Description	No. Used
5	25 041 05	Gasket – Fuel Pump	1
6	X-25-63	Washer – Plain	2
7	47 086 08	Screw – Posidrive	2
8	25 353 10	Line – Fuel	1
9	45 050 01	Filter – Fuel	1



GOVERNOR – GROUP 17

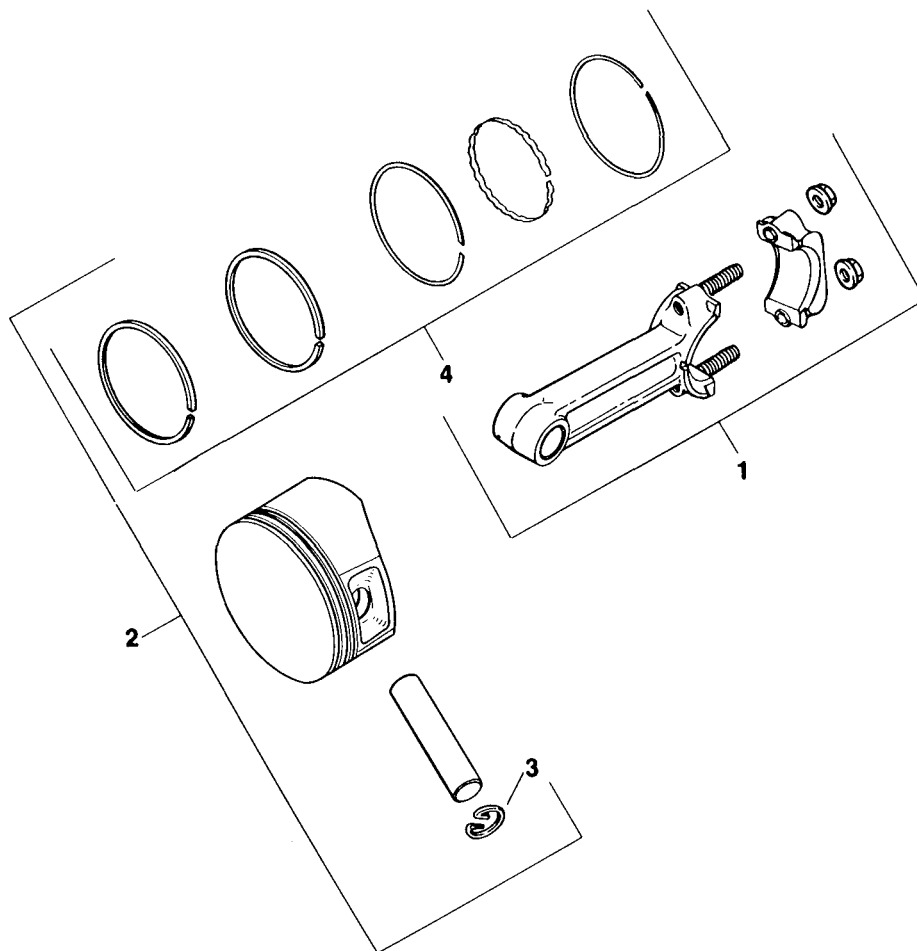
Ref. No.	Part No.	Description	No. Used	Ref. No.	Part No.	Description	No. Used
1	82 755 07	Kit – Governor Linkage (Incl. Ref. #2)	1	11	52 119 01	Lever – Speed Control	1
2	25 158 09	Bushing	2	12	234614	Stop – Governor	1
3	52 186 06	Arm – Governor	1	13	52 531 02	Stop – High Speed	1
4	X-81-1	Nut – Hex.	1	14	231355	Pin – Governor Stop	1
5	X-25-72	Washer – Plain	1	15	X-25-12	Washer – Plain	1
6	52 211 04	Screw – Round Hd.	1	16	52 078 04	Shaft – Governor Cross	1
7	52 091 04	Spring – Governor	1	17	X-25-102	Washer – Plain	2
8	235778	Clamp – Cable	2	18	X-269-28	Retainer – Governor	1
9	X-67-97	Screw – Hex. Washer Hd.	2	19	X-25-63	Washer – Plain	1
10	X-67-62	Screw – Hex. Washer Hd.	1	20	A-235743-S	Kit – Governor Gear	1
				21	237022	Washer	1



IGNITION – GROUP 18

Ref. No.	Part No.	Description	No. Used
1	237878	Kit – Stator	1
2	X-67-51	Screw – Cap Hex. Hd.	4
3	52 313 02	Grommet	1
4	25 086 15	Screw – Hex. Washer Hd.	2
5	52 584 02	Module – Ignition	1
6	25 086 16	Screw – Hex. Washer Hd.	2
7	52 126 08	Bracket – Module	1
8	52 132 02	Plug – Spark	2
9	25 755 03	Kit – Rectifier/Regulator (Incl. Ref. #10)	1
10	X-132-5	Screw – Cap Hex. Hd.	2
11	236602	Connector	1

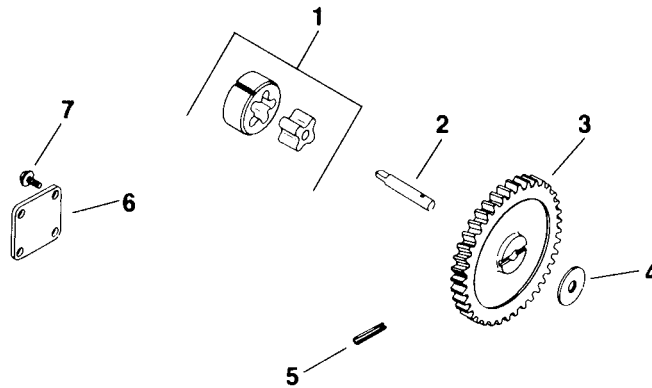
Ref. No.	Part No.	Description	No. Used
12	41 155 03	Connector	1
*	25 518 05	Lead – Black Rectifier/Regulator (5" – 14 gauge push on tab terminals)	1
*	52 518 17	Lead – White Module to Connector (12-1/2" – 18 gauge – insulated push on tab – uninsulated push on tab terminals)	1



PISTON & ROD – GROUP 22

Ref. No.	Part No.	Description	No. Used
1	52 067 67	Rod – Connecting Std.	2
*	52 067 68	Rod – Connecting .010"	2
2	52 874 11	Piston & Ring Set Std.	2
*	52 874 12	Piston & Ring Set .003"	2
*	52 874 13	Piston & Ring Set .010"	2
*	52 874 14	Piston & Ring Set .020"	2

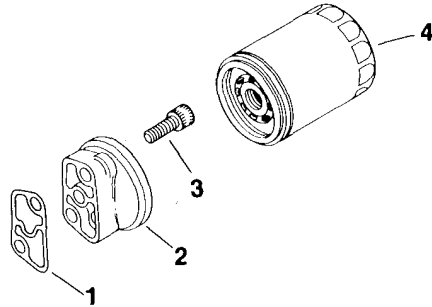
Ref. No.	Part No.	Description	No. Used
*	52 874 15	Piston & Ring Set .030"	2
3	230004	Retainer – Piston Pin	4
4	52 108 09	Ring Set Std. & .003"	2
*	52 108 10	Ring Set .010"	2
*	52 108 11	Ring Set .020"	2
*	52 108 12	Ring Set .030"	2



OIL PUMP – GROUP 25

Ref. No.	Part No.	Description	No. Used
1	52 393 09	Rotor Set	1
2	52 144 05	Shaft – Oil Pump	1
3	52 043 05	Gear – Oil Pump	1
4	52 422 01	Spacer – Shim	A/R

Ref. No.	Part No.	Description	No. Used
5	X-280-25	Pin – Roll	1
6	52 096 03	Cover – Oil Pump	1
7	X-67-64	Screw – Hex. Washer Hd.	4



OIL FILTER – GROUP 29

Ref. No.	Part No.	Description	No. Used
1	52 041 16	Gasket – Filter	1
2	52 181 03	Adapter – Oil Filter	1

Ref. No.	Part No.	Description	No. Used
3	X-55-15	Screw – Hex. Socket Hd.	2
4	52 050 02	Filter – Oil	1

TORO PART NUMBER INDEX

3315-542

Part No.	Description	Pg. Ref. No. No. Qty.	Part No.	Description	Pg. Ref. No. No. Qty.
3-6498	Washer - Thrust	3 8 5	46-8560	Screw - Thread Forming	12 5 11
3-6498	Washer - Thrust	2 52 2	46-8560	Screw - Thread Forming	17 73 2
5-0930	Key - Square	12 20 1	47-1910	Solenoid	11 32 1
11-0590	Screw	5 20 3	47-1980	Cover Steering Shaft	2 31 1
11-0590	Screw	12 27 1	47-2963	Hose - Fuel	11 24 1
11-0590	Screw	6 68 1	49-6430	Pad - Reverse	1 12 1
12-1109	Lever - Idler	9 27 1	49-6470	Pad - Accelerator	1 4 1
12-5950	Rod - Battery Support	11 18 1	51-3150	Shim - Spring Arm	16 14 1
12-8130	Meter - Hour	7 29 1	53-4430	Decal - Oil	6 51 1
13-5969	Differential Assembly	17 52 1	54-0080	Transmission - Hydrostatic	16 8 1
14-7279	Engine - Kohler	12 21 1	54-0090	Valve Assembly	7 23 1
19-1470	Bolt - Shoulder	5 41 2	54-0100	Filter Head Assembly	6 63 1
21-9260	Cover - Dust	1 21 1	54-0110	Filter - Transmission Oil	5 44 1
22-8338	Plug	8 19 1	54-0140	Hub - Wheel	4 2 2
22-8340	Spring	8 21 1	54-0150	Cylinder - Lift	9 18 1
22-8350	Ball	8 22 1	54-0220	Clutch Assembly	12 15 1
22-8360	Pin - Cam	8 24 1	54-0230	Field Assembly	13 1 1
22-8370	Seat - Check Valve	8 23 1	54-0240	Fan	16 44 1
22-8380	Retainer - Spring	8 3 2	54-0260	Spool	8 1 1
22-8410	Spring	8 4 1	54-0280	Shaft	10 13 1
22-8480	Ring Retaining	8 6 1	54-0290	Seal Repair Kit	10 * 1
22-8490	Ring Retaining	8 7 1	54-0300	Piston	10 3 1
22-8500	"O"Ring	8 2 2	54-0310	Head	10 6 1
23-1120	Washer - Flat	6 58 2	54-0320	Gear	16 7 1
24-5790	Weight - Rear	3 17 1	54-0330	Frame - Rear	3 13 1
27-0410	Bolt - Shoulder	5 28 2	54-0450	Axle Stand R.H.	6 60 1
27-2360	Switch - Ignition	2 36 1	54-0460	Axle Stand - L.H.	5 39 1
27-5200	Spacer	8 5 1	54-0510	Axle - Rear	3 10 1
27-6230	Bolt - Shoulder	9 31 1	54-0560	Spindle L. H.	3 22 1
27-7310	Decal - Refueling	11 38 1	54-0570	Spindle R.H.	3 7 1
27-9080	Bushing	1 1 3	54-0600	Plate - Pivot	3 24 1
27-9080	Bushing	9 6 4	54-0860	Decal - Throttle Choke	2 32 1
27-9080	Bushing	3 31 2	54-0860	Decal - Throttle, Choke	2 39 1
28-1120	Plug	8 18 1	54-0870	Decal - Switch	2 40 1
28-2480	Washer - Flat	3 2 2	54-0880	Decal - Tunnel	2 47 1
28-3892	Wire Assembly (Ground)	14 2 1	54-0900	Decal - Lift Control	7 13 1
28-3940	Collar - Steering Shaft	2 45 2	54-0910	Decal - Warning	5 32 1
29-0590	Screen	11 35 1	54-0920	Decal - Parking Brake	7 1 2
29-6150	Spring - Leaf	16 17 1	54-0930	Pulley - Transmission	16 43 1
29-6162	Switch	16 23 1	54-0950	Screen	12 8 1
29-6170	Spring - Extension	16 16 1	54-0960	Spring - Parking Brake	9 42 1
36-3220	Pulley - Idler	9 26 1	54-0990	Duct - Bottom	12 9 1
36-4950	Cap - Oil	11 36 1	54-1000	Tower - Top	1 24 1
37-2610	Switch - Clutch & Brake	2 41 1	54-1010	Channel - Front	5 45 1
37-7250	Spacer	6 53 2	54-1060	Bracket - Idler Mount	6 55 1
38-8000	Filter - Fuel	11 26 1	54-1120	Bracket - Filter Head	6 64 1
43-5220	Ring - Retaining	10 12 1	54-1130	Link - Idler Anchor	5 22 2
44-8160	Washer - Flat	12 14 1	54-1170	Spring - Extension	9 30 1
44-8310	Ring - Retaining	13 3 2	54-1190	Bracket - Hour Meter	7 31 1
44-8320	Spring	13 10 3	54-1210	Mount - Engine	5 12 1
44-8330	Spacer - Bearing	13 6 1	54-1220	Support - Seat R.H.	7 8 1
44-8340	Collar - Bearing	13 7 1	54-1230	Support - Seat L.H.	7 32 1
44-8360	Field Coil, Rotor & Bearing	13 4 1	54-1260	Clamp - Battery	11 9 1
44-8370	Armature & Pulley Assembly	13 5 1	54-1270	Bracket - Parking Brake	9 8 1
46-6680	Bushing	3 9 6	54-1280	Plate - Seat	7 12 1
46-6680	Bushing - Flanged	17 69 2	54-1340	Link - Steering	2 43 1
46-8560	Screw	5 35 6	54-1380	VBelt	12 16 1
46-8560	Screw - Hex. Hd.	1 5 25	54-1380	JackShaft - VBelt	5 40 1

*Not Illustrated

TORO PART NUMBER INDEX (Cont.)

3315-000

Part No.	Description	Pg. Ref. No. No. Qty.	Part No.	Description	Pg. Ref. No. No. Qty.
54-1390	VBelt	12 18 1	54-2580	Hydraulic Hose Assembly	15 3 1
54-1390	VBelt - Traction	6 59 1	54-2590	Hydraulic Hose Assembly	15 7 1
54-1410	Spring - Idler	5 21 2	54-2610	Hydraulic Hose Assembly	15 5 1
54-1420	Shaft - Steering	2 30 1	54-2620	Hydraulic Hose Assembly	15 6 1
54-1440	Bracket - Tunnel	2 50 2	54-2630	Follower - Steering Shaft	2 53 1
54-1450	Control - Throttle, Choke	1 25 2	54-2640	Cable - Traction Control	2 44 1
54-1470	Footrest - L.H.	2 63 1	54-3110	Hinge - Seat	7 3 1
54-1490	Rod - Steering	17 65 1	54-8970	Bolt - U	17 53 1
54-1491	Rod - Steering , Rear	3 29 1	54-8980	Pad - Fender L.H.	5 38 1
54-1550	Support - Hood	7 30 1	54-8990	Pad - Fender R.H.	5 2 1
54-1600	Jackshaft	17 57 1	54-9200	Lever - Idler	6 52 2
54-1700	Chamber - Air	7 27 1	55-3570	Cap - Fuel	11 2 1
54-1730	Mount - Cylinder	6 47 1	55-3630	Adjustable Relief Valve	8 * 1
54-1770	Bracket - Cable Traction	2 64 1	55-3640	Seat - Relief	8 8 1
54-1780	Hose - Air Cleaner	12 24 1	55-3650	Plug	8 26 1
54-1790	Cover - Chamber	7 35 1	55-4300	Decal	9 43 1
54-1800	Plate - Engine Front	5 8 2	55-4320	Gasket	16 5 1
54-1810	Plate - Engine, Rear	5 11 2	55-4860	Guide - Belt	5 37 1
54-1820	Bar - Tension	5 24 1	55-7120	Switch - Brake	9 9 1
54-1830	Support - Shield	5 25 1	55-7310	Bracket - Idler	9 34 1
54-1840	Shield - Heat	11 21 1	55-8660	Clamp Assembly	12 3 1
54-1850	Support - Battery	11 16 1	56-2760	Spring - Extension	9 21 2
54-1860	Stop - Hood Upper	11 6 2	56-2800	Screw - Hex. Socket Hd.	18 1 1
54-1870	Stop - Hood, Lower	5 31 2	56-2810	Bearing - Input	19 47 1
54-1880	Strap - Fuel Tank	11 4 2	56-2820	Seal - Oil	18 46 1
54-1890	Foam - Tank	11 20 2	56-2830	Charge Pump Assembly	18 2 1
54-1900	Tower - Front	1 3 1	56-2850	Ring - Seal	18 4 1
54-1910	Channel - Side R.H.	5 6 1	56-2860	Plate - Pump	18 5 1
54-1920	Channel - Side L.H.	5 33 1	56-2870	Ring - Seal	18 6 1
54-1930	Fender R.H.	5 1 1	56-2880	Button	18 7 2
54-1940	Fender L.H.	5 36 1	56-2890	Pin - Dowel	18 8 1
54-1950	Bracket - Support Bearing	1 22 2	56-2900	Pin - Drive	18 9 1
54-1960	Panel - Tower Rear	2 37 1	56-2910	Input Shaft Assembly	18 10 1
54-2000	Pin - Pivot	9 13 1	56-2920	Ring - Seal	18 11 1
54-2030	Wire Assembly	14 3 1	56-2930	Pump Rotor & Ball Assembly	18 12 1
54-2031	Wire Assembly	14 4 1	56-2940	Cam Ring Assembly	18 14 1
54-2040	Follower Lever	2 54 1	56-2950	Piston	18 15 2
54-2060	Bellcrank Assembly	17 67 1	56-2960	Ring - Backup	18 16 2
54-2070	Anchor - Spring	5 18 1	56-2970	"O"Ring	18 17 2
54-2100	Pin - Pivot	9 39 2	56-2980	Pin - Coil	18 18 1
54-2110	Lever - Brake	9 2 1	56-2990	Pintle Assembly	18 19 1
54-2120	Link - Parking Brake	9 1 1	56-3000	Ring - Retaining	18 20 2
54-2160	Bracket - Anchor	12 19 1	56-3010	Ball	18 21 2
54-2260	Pad Footrest L.H.	2 62 1	56-3020	Body - Check Valve	18 22 2
54-2290	Pipe - Exhaust	12 10 1	56-3030	Ball	18 25 1
54-2300	Cover - Solenoid	11 31 1	56-3040	Spring - Relief Valve	18 24 1
54-2310	Hydraulic Tube Assembly	15 2 1	56-3050	Plug - Relief Valve	18 23 1
54-2310	Hydraulic Tube Assembly	11 28 1	56-3060	Pin - Dowel	18 26 1
54-2330	Pulley - Engine	12 17 1	56-3080	Ring - Retaining	19 49 1
54-2380	Pulley - Input	17 55 1	56-3090	Ring - Retaining	19 48 2
54-2390	Pulley - Output	17 74 1	56-3100	Screw - Hex. Socket Hd.	18 45 4
54-2400	Hood	11 3 1	56-3110	Pin - Roll	18 44 6
54-2420	Mount - Engine	5 10 1	56-3120	Carrier	18 3 1
54-2470	Reservoir - Hydraulic	11 34 1	56-3130	Seal - Oil	18 43 1
54-2480	Duct - Engine	12 6 1	56-3140	Control Shaft Kit	18 42 1
54-2500	Channel - Middle	5 19 1	56-3170	Insert - Cam Ring	18 30 1
54-2550	Control - Traction	16 10 1	56-3180	Spring - Valve	18 27 2
54-2570	Hydraulic Hose Assembly	15 4 1	56-3200	Body - Valve	18 28 2

*Not Illustrated

TORO PART NUMBER INDEX (Cont.)

Part No.	Description	Pg. Ref. No. No. Qty.	Part No.	Description	Pg. Ref. No. No. Qty.
56-3210	Ball	18 29 2	82-4680	Lever - Valve	7 10 1
56-3220	Motor Rotor & Ball Assembly	18 39 1	82-4700	Bracket - Lever, Valve	7 20 1
56-3230	Output Shaft Assembly	18 40 1	82-4720	Pad - Footrest R.H.	2 68 1
56-3240	Race - Motor	18 41 1	82-8640	Wire - Jumper (Hour Meter)	7 * 1
56-3250	Plug Assembly	18 33 1	82-8640	Wire Assembly	14 5 1
56-3260	"O"Ring	18 34 1	92-1770	Harness - Wire	14 1 1
56-3270	Seal - Oil	18 35 1	218-500	Nut	2 38 1
56-3280	Bearing - Output	18 36 1	218-515	Bracket - Mounting	7 28 1
56-3290	Ring - Retaining	18 37 1	231-122	Tire	4 9 2
56-3300	Screw - Hex. Socket Hd.	18 38 2	231-126	Tire	3 5 2
56-3310	Kit -Overhaul Seal	19 * 1	232-7	Valve Stem w/Cap	4 7 2
56-3320	"T"Hook	9 20 1	232-27	Valve Stem w/Cap	3 36 2
56-3370	Bracket - Spring	9 22 2	233-37	Knob	9 3 1
56-3390	Hydraulic Hose Assembly	15 1 1	233-37	Knob	7 11 1
56-6590	Screw	7 14 1	237-42	"O"Ring	8 20 2
56-6920	Bracket - Cable Extension	9 40 1	237-42	"O"Ring	7 24 2
57-3100	Tie Rod - Steering	3 35 2	237-42	"O"Ring	11 30 2
59-1470	Shaft - Bellcrank	17 72 1	237-78	"O"Ring	9 17 2
59-1500	Pivot - Axle	3 19 1	237-78	"O"Ring	7 19 2
59-1550	Pedal - Shaft	2 65 1	237-79	"O"Ring	16 39 2
59-1610	Tube - Grease Fitting	1 14 1	237-79	"O"Ring	6 62 1
59-1620	Bracket - Transaxle	16 9 1	237-80	"O"Ring	17 54 2
60-8990	Plate - Transaxle	17 80 1	237-100	Grommet	11 19 1
60-9050	Bearing - Steering Shaft	2 46 1	242-50	Nut	4 6 8
60-9130	Bracket - Jackshaft	17 71 1	242-60	Rim	3 6 2
60-9140	Frame - Footrest	2 51 1	242-71	Bolt - Wheel	4 1 8
60-9150	Tunnel	2 66 1	242-76	Rim	4 8 2
61-3610	Decal - Warning	9 29 2	2411-34	Ball Joint	1 16 1
61-9780	Hub Cap	3 1 2	2411-34	Joint - Ball	16 29 1
62-4040	Tank - Fuel	11 15 1	2412-3	Clamp - Hose	12 23 2
62-4420	Spacer	3 32 9	2412-36	Clamp - Hose	11 22 4
62-4530	Idler - "V"Belt	5 43 2	2412-94	"R"Clamp	7 26 1
62-4540	Idler - Flat	6 56 2	2412-100	"J"Clamp	5 13 4
62-7400	Decal - Toro	2 70 1	2412-108	"R"Clamp	11 23 1
63-7590	Relay	11 39 1	2412-120	"R"Clamp	7 38 2
63-8360	Key	2 35 2	251-210	Bearing - Ball	3 3 4
63-8440	Decal - Hot	12 7 1	251-259	Bearing	16 20 1
66-0120	Knob	1 26 2	251-288	Bearing w/Collar	17 59 2
66-1420	Lever - Traction	16 27 1	251-291	Bearing - Pulley	13 8 1
66-1430	Plate - Traction	16 13 1	251-292	Bearing - Field	13 2 1
66-1570	Frame - Lift	9 14 1	251-304	Rod End	17 61 1
66-1600	Hose - Fuel	11 27 1	251-304	Rod End	3 33 2
68-7330	Decal - Danger	11 41 1	251-304	Rod End	2 57 1
72-4060	Bearing Assembly	17 79 2	251-305	Rod End	17 63 1
72-7820	Decal - Service	12 25 1	251-305	Rod End	3 25 3
72-7820	Decal - Service	11 40 1	251-341	Flange - Bearing	17 83 4
74-0110	Pedal - Traction	1 11 1	256-154	Bushing	9 32 2
74-0720	Tube - Manual	7 41 1	256-156	Bushing	1 10 2
74-0890	Decal - ProLine 118	11 37 2	283-17	Pin - Clevis	7 16 1
76-1420	Wheel - Steering	29 2 1	283-55	Pin - Clevis	9 23 1
77-0981	Boot - Terminal	11 10 1	302-2	Fitting - Grease	17 76 2
77-3100	Decal - Caution	5 7 2	302-5	Fitting - Grease	3 4 2
80-3750	Spacer	16 2 2	302-11	Fitting - Grease	3 20 1
80-3760	Support - Seat, Front	7 2 1	302-22	Fitting Grease	1 13 1
80-4910	Footrest - R.H.	2 69 1	302-49	Fitting - Grease	3 21 3
80-4920	Pedal - Accelerator	1 8 1	302-49	Fitting - Grease	17 68 1
80-4930	Footrest - Pedal	1 6 1	321-2	Screw- Hex. Hd.	9 36 2
82-4640	Battery	11 12 1	321-2	Screw - Hex. Hd.	1 27 4

*Not Illustrated

TORO PART NUMBER INDEX (Cont.)

3315-000

Part No.	Description	Pg. Ref. No. No. Qty.	Part No.	Description	Pg. Ref. No. No. Qty.
321-2	Screw- Hex. Hd.	16 47 1	3230-1	Bolt - Carriage	17 58 6
321-3	Screw- Hex. Hd.	6 49 2	3230-3	Bolt - Carriage	12 4 1
321-3	Screw - Hex. Hd.	1 9 2	3234-1	Screw - Hex. Flange Hd.	16 4 5
321-3	Screw - Hex. Hd.	11 1 2	3234-14	Screw	5 3 4
321-4	Screw - Hex. Hd.	3 15 4	3241-1	Screw - Set	17 56 4
321-4	Screw - Hex. Hd.	7 36 5	3241-2	Screw - Set	16 42 2
321-4	Screw - Hex. Hd.	2 61 14	3245-35	Screw - Set	17 60 4
321-4	Screw- Hex. Hd.	16 18 2	3249-11	Screw - Round Hd.	16 24 2
321-14	Screw- Hex. Hd.	7 7 2	3253-3	Washer	9 37 2
321-14	Screw- Hex. Hd.	5 16 2	3253-3	Washer - Lock	16 46 1
321-23	Screw	7 9 2	3253-3	Washer - Lock	6 50 2
322-2	Screw	5 30 4	3253-4	Washer - Lock	12 2 1
322-3	Screw- Hex. Hd.	11 5 2	3253-5	Washer - Lock	16 34 4
322-3	Screw- Hex. Hd.	16 15 2	3253-6	Washer - Lock	12 12 2
322-4	Screw- Hex. Hd.	7 6 8	3253-7	Washer	3 39 2
322-4	Screw - Hex. Hd.	5 26 13	3254-9	Washer - Lock	16 30 2
322-4	Screw - Hex. Hd.	9 33 4	3255-5	Washer - Lock ETLW	16 49 3
322-4	Screw - Hex. Hd.	1 2 19	3255-7	Washer - Ext. Tooth	11 33 4
322-4	Screw- Hex. Hd.	11 17 2	3255-8	Washer - Lock, Ext. Tooth	6 69 1
322-4	Screw- Hex. Hd.	17 75 6	3256-1	Washer	11 13 4
322-6	Screw- Hex. Hd.	5 9 8	3256-1	Washer	9 38 2
322-6	Screw- Hex. Hd.	9 11 2	3256-3	Washer - Flat	6 54 2
322-6	Screw- Hex. Hd.	5 23 10	3256-3	Washer - Flat	17 78 4
322-6	Screw- Hex. Hd.	16 32 2	3256-4	Washer - Flat	3 26 7
322-7	Screw- Hex. Hd.	16 19 1	3256-4	Washer - Flat	2 56 1
322-10	Screw- Hex. Hd.	4 5 2	3256-23	Washer - Flat	5 4 8
322-10	Screw - Hex. Hd.	2 67 2	3256-23	Washer - Flat	7 5 6
322-11	Screw- Hex. Hd.	16 1 4	3256-23	Washer - Flat	16 12 4
323-7	Screw	12 26 3	3256-23	Washer - Flat	2 49 4
323-8	Screw- Hex. Hd.	17 81 4	3256-24	Washer - Flat	9 4 2
323-9	Screw	6 57 2	3256-26	Washer - Flat	16 25 1
323-10	Screw	9 25 1	3256-51	Screw	7 39 2
323-11	Screw	5 42 2	3256-55	Washer	16 45 1
323-13	Screw- Hex. Hd.	16 50 1	3257-5	Key - Woodruff	16 41 3
323-16	Screw- Hex. Hd.	17 51 1	3257-10	Key - Woodruff	4 3 2
323-23	Screw- Hex. Hd.	16 36 1	3257-24	Key - Woodruff	16 37 1
323-40	Screw- Hex. Hd.	17 82 1	3272-6	Pin - Cotter	7 15 1
324-7	Screw- Hex. Hd.	3 27 5	3272-10	Pin - Cotter	9 5 2
324-7	Screw - Hex. Hd.	2 58 1	3272-12	Pin - Cotter	3 37 2
324-7	Screw- Hex. Hd.	17 62 2	3290-211	Washer - Spring	5 29 2
324-11	Screw- Hex. Hd.	12 11 1	3290-250	Pin - Cotter	5 15 2
325-6	Screw	3 38 2	3290-355	Pin - Cotter	9 24 1
327-24	Screw	6 48 1	3290-379	Cable Tie	6 66 7
3210-5	Screw- Hex. Hd.	16 21 1	3290-440	Washer - Belleville	2 42 1
3212-24	Screw- Hex. Hd.	12 13 1	3296-3	Nut - Hex.	1 15 1
3217-6	Nut - Hex.	12 1 1	3296-3	Nut - Lock	16 35 1
3217-16	Nut - Brass Hex.	16 31 2	3296-6	Nut- Lock	9 35 1
3217-26	Nut	7 34 1	3296-6	Nut - Lock	13 9 3
3218-2	Nut - Jam	16 33 2	3296-15	Nut	9 41 2
3219-14	Nut	11 25 1	3296-25	Nut - Lock	16 26 1
3220-1	Nut - Hex. Jam	16 28 1	3296-29	Nut- Hex.	9 7 6
3220-1	Nut - Jam	1 17 1	3296-29	Nut- Hex.	5 14 32
3220-2	Nut - Hex. Jam	16 22 1	3296-29	Nut- Hex.	3 16 8
3220-4	Nut - Hex. Jam	17 64 2	3296-29	Nut - Hex.	7 4 8
3220-4	Nut - Jam	3 28 3	3296-29	Nut - Hex.	11 7 9
3220-6	Nut - Jam	9 12 2	3296-29	Nut - Lock	16 3 13
3220-19	Nut - Jam	3 34 2	3296-29	Nut - Lock	4 4 2
3229-1	Bolt - Carriage	11 11 4	3296-29	Nut - Lock	1 18 24

*Not Illustrated

TORO PART NUMBER INDEX (Cont.)

Part No.	Description	Pg. Ref. No. No. Qty.	Part No.	Description	Pg. Ref. No. No. Qty.
3296-39	Nut	7 37 1	32144-11	Screw - Thread Forming	5 5 2
3296-41	Nut - Hex.	3 12 1	32144-15	Screw	3 18 2
3296-42	Nut - Lock	6 65 2	32144-19	Screw - Round Hd.	16 48 3
3296-42	Nut - Lock	16 11 2	32146-5	Nut	9 15 2
3296-42	Nut - Lock	11 14 8	32149-1	Nut - Lock	5 27 1
3296-42	Nut - Lock	7 21 19	32149-1	Nut - Lock	17 70 6
3296-42	Nut - Lock	1 23 16	32151-48	Ring - Retaining	3 11 2
3296-44	Nut - Hex.	9 28 1	32152-9	Nut - Lock	3 23 5
3296-44	Nut - Hex.	5 17 6	32152-9	Nut - Lock	2 55 1
3296-44	Nut - Hex.	12 22 3	32152-9	Nut - Lock	17 66 2
3296-61	Nut	6 46 1	32152-10	Nut - Lock	10 2 1
32103-22	Nut - Wing	11 8 3	335-8	Washer - Ext. Tooth	7 33 1
32104-76	Screw	7 40 2	3356-1	Washer - Flat	7 25 10
32115-5	Nut Square	2 60 4	33296-44	Nut - Lock	17 77 4
32120-64	Ring - Snap	16 6 1	353-370	Fitting - Hydraulic 90°	16 40 2
32121-10	Pin - Roll	1 28 1	353-371	Fitting - 90°	6 61 2
32121-20	Pin - Roll	1 19 1	353-375	Fitting - 90°	7 22 1
32121-31	Pin - Roll	1 20 2	353-375	Fitting - 90°	9 19 1
32121-45	Pin - Roll	1 7 1	353-385	Fitting - Hydraulic Straight	11 29 2
32121-51	Pin - Roll	3 30 1	353-431	Fitting 45°	9 16 1
32121-77	Pin Roll	2 59 2	353-511	Fitting	7 17 2
32128-20	Nut - Flange Lock	2 48 2	353-511	Fitting - Hydraulic 90°	16 38 2
32128-20	Nut - Flange Lock	6 67 1	353-545	Fitting	7 18 1
32144-1	Screw - Thread Forming	9 10 2			

TABLE OF CONTENTS

Description	Page	Description	Page
Frame and Steering Assembly	1	Fuel Pump	34
Rear Axle Assembly	3	Governor	35
Front Wheel Assembly	4	Ignition	36
Frame And Jackshaft Assembly	5	Piston And Rod	37
Seat Support Assembly	7	Oil Pump	38
Valve Assembly	8	Oil Filter	39
Parking Brake And Lift Assembly	9	Numerical Index	40-43
Hydraulic Lift Cylinder No. 54-0150	10		
Hood, Fuel Tank And Hydraulic Reservoir	11	OPTIONAL EQUIPMENT	
Engine Assembly (Kohler M18Qs-24657)	12	Deluxe Suspension Seat	Model No. 30756
Clutch Assembly No. 54-0220	13	Standard Seat	Part No. 66-7500
Electric Schematic	14	Brake Kit Model	Model No. 30758
Hydraulic Schematic	15	Remote Air Cleaner	Part No. 55-8460
Transmission And Deferential	16	Floatation Kit	Model No. 30759
Hydraulic Transmission	18	44" Deck Baffle Kit	Part No. 60-9030
Differential Assembly 1310-001A	20	52" Deck Baffle Kit	Part No. 68-7210
Engine Breakdown 5656630 (Kohler M18Qs-24657)		Leaf Mulcher 44" Deck	Model No. 30752
Air Intake	21	Leaf Mulcher 52" Deck	Model No. 30700
Baffle And Shroud	23	Rear Weight Kit	Part No. 24-5790
Breather And Vent	24	44" Snowthrower	Model No. 30761
Camshaft And Valve	25	Tire Chain Kit	Part No. 56-6630
Carburetor	26	Wheel Weight Kit	Part No. 56-6620
Crankcase	27	Cab Kit	(Kohler) Part No. 25 757 11
Crankshaft	28	48" Recycler Deck	Model No. 30548
Cylinder Head	29	44" Side Discharge Deck	Model No. 30544
Dipstick	30	48" Rear Discharge Deck	Model No. 30747
Electric Start	31	52" Side Discharge Deck	Model No. 30753
Exhaust	32	44" Grass Collection System	Model No. 30751
FlyWheel	33	52" Grass Collection System	Model No. 30576