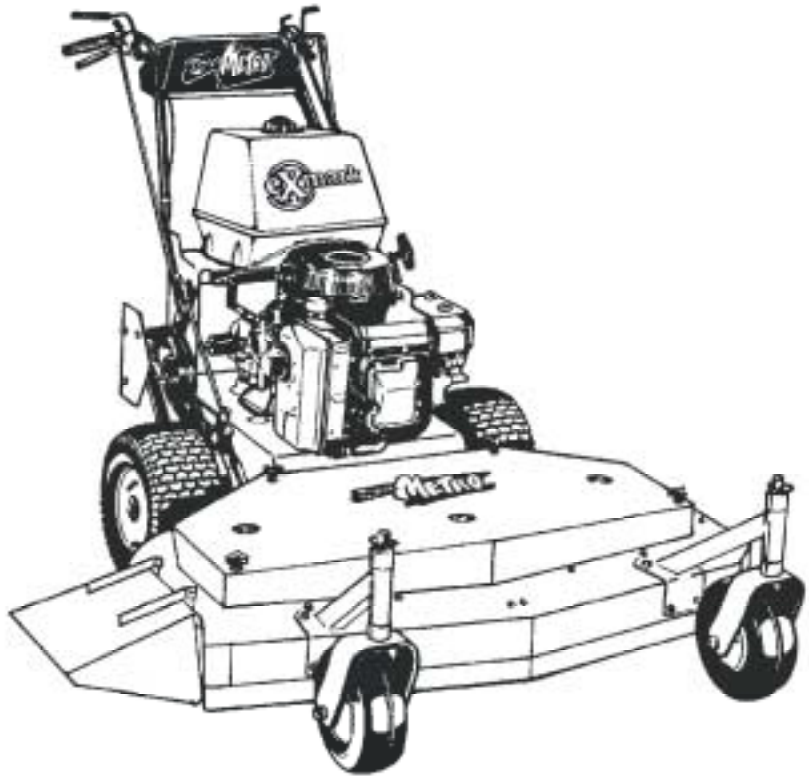


For Serial Nos.
260,000 & Higher



PARTS MANUAL

METRO®

CONGRATULATIONS on the purchase of your new Exmark mower. This product has been carefully designed and manufactured to give you a maximum amount of dependability and years of trouble-free operation.

If additional information is needed, or should you require trained mechanic service, contact your authorized Exmark equipment dealer or distributor.

If you need to order replacement parts from your dealer, always give the model number and serial number of your mower as well as the part number, description and quantity of the part needed.

The Serial No. plate is located on the top front engine frame on the right hand side of the machine.

For ease of ordering and reference, we suggest that you record the information requested in the following identification table.

Model No. _____
Serial No. _____
Engine Model No. _____
Engine Serial No. _____
Date Purchased _____

Paste Label From Literature Packet Here

EXMARK PARTS PLUS® PROGRAM

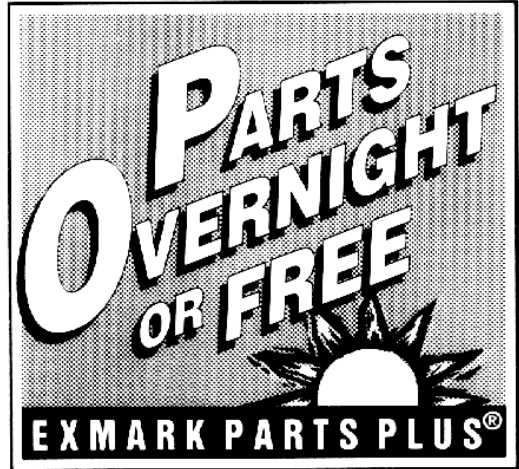
EFFECTIVE DATE: September 1, 1995

Program

If your Exmark dealer does not have the Exmark part in stock, Exmark will get the parts to the dealer the next business day or the part will be FREE* Guaranteed!!

How the Program Works

1. If dealer does not have part in stock for a "down" unit at the time of request by customer, the dealer contacts his distributor by 1:00 p.m., local time, and requests Exmark Parts Plus® shipment of six (6) line items or less.
2. Distributor ships part(s) to dealer or customer, as requested by dealer, same day, overnight UPS. Distributor bills dealer for part and freight charges where applicable.
3. If distributor does not have the part(s) in stock to satisfy Exmark Parts Plus® order, he contacts Exmark by 3:00 p.m., central time, with an Exmark Parts Plus® order of six (6) line items or less.
4. If order is received by 3:00 p.m. central time, Exmark ships part(s) direct to dealer or customer, as requested by distributor, same day, overnight UPS. Exmark bills the distributor for parts and shipping charges, where applicable.
5. The customer pays for the part and freight if it is shipped under the Exmark Parts Plus® and if it arrive in accordance to the program.
6. Who pays for the part and freight if it fails to arrive overnight in accordance to the program?
 - A. Under any circumstance the customer does not pay.
 - B. If the part does not arrive overnight due to:
 1. The dealer not submitting the Exmark Parts Plus® order to his Exmark distributor by 1:00 p.m., the dealer pays for the part and freight.
 2. The Distributor being unable to ship the part the same day or not submitting the Exmark Parts Plus® order to Exmark by 3:00 p.m., central time, the Distributor pays for the part and freight.
 3. Exmark being unable to ship the part and the Exmark parts order is received by 3:00 p.m., central time, Exmark pays for the part and freight.
 4. If the part does not arrive overnight due to the shipper (UPS), the shipper pays for the freight and Exmark pays for the part.



The following restrictions apply -- The Exmark Parts Plus® Program is available only through participating Exmark Dealers and applies only to orders submitted on this program Monday through Thursday. Parts Plus service is available only in the 48 contiguous United States. UPS has initiated a Saturday delivery program to many areas of the continental United States and can be requested for an overnight shipment on Friday to be delivered Saturday. The next day air charge, plus the Saturday delivery fee will be the responsibility of the purchaser. Exmark Mfg. will assume no responsibility for Saturday delivery shipments. To qualify, all Exmark Parts Plus® orders must be received by Exmark by 3:00 p.m., central time. Orders must be six (6) line items or less. Exclusions from the Exmark Parts Plus® Program are: Any wholegood or accessory in its entirety, engines and engine replacement parts, 5-speed Peerless transmissions and 5-speed transaxles, hydraulic or hydrostatic wheel motors, cutter decks and engine decks or any item exceeding United Parcel Service size and weight restrictions.

Due to UPS restrictions, aerosol spray paint is considered a hazardous material and cannot be shipped via UPS next day or Second Day Air.

Exmark Manufacturing stocks a limited supply of parts for transaxles, pumps and wheel motors. These parts can be ordered for Next Day Air shipment but will not be guaranteed per the Parts Plus Program.

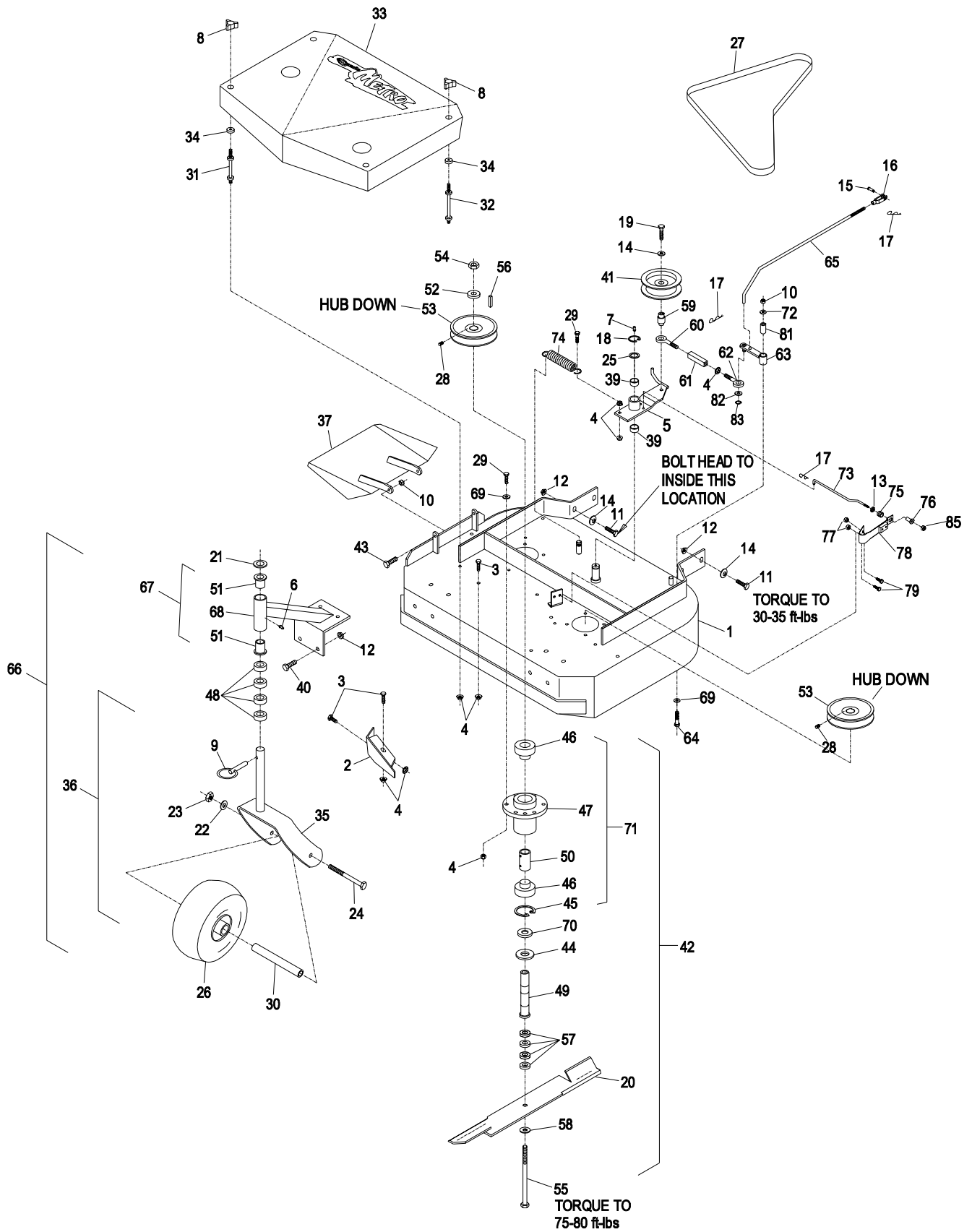


**READ OPERATOR'S MANUAL BEFORE
OPERATING OR SERVICING EXMARK EQUIPMENT.**

TABLE OF CONTENTS

<u>Description</u>	<u>Page</u>
Decals.....	12
Engine Deck Group.....	6 - 9
48" Mower Deck	4 - 5
32" and 36" Mower Deck	2 - 3
Wiring Diagrams	13
Upper Handles & Controls	10 - 11

32" and 36" MOWER DECK

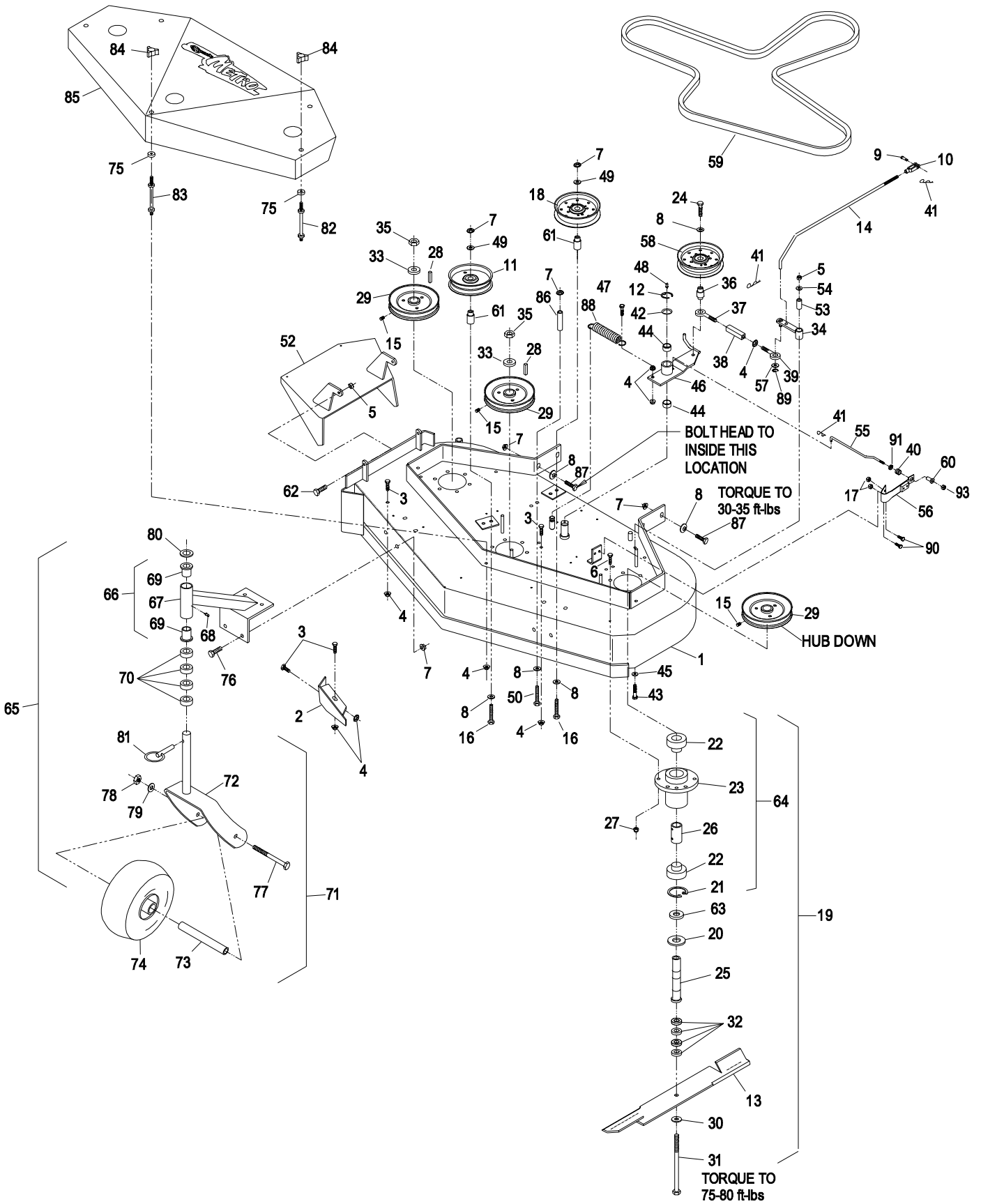


32" and 36" MOWER DECK

Ref. No.	Part No.	Description	Qty. Req'd.	Ref. No.	Part No.	Description	Qty. Req'd.
1★	1-304267	Deck w/decals & dogleg (36")	1	34	1-323417	Washer, belt cover mount	4
	1-302235-01	Deck weldmt (36")	1	35	1-322145-01	Fork widmnt, caster	2
	1-324387	Deck w/decals & dogleg (32")	1	36	1-322154	Caster wheel assembly	2
	1-322229-01	Deck weldmt (32")	1	37	1-302233-01	Chute	1
2	1-302189-01	Baffle widmnt, dogleg	1	38	3296-56	Nut,nyloc 1/4-20 thin	1
3	322-2	Screw, 5/16-18 x 5/8	8	39	1-323729	Powder metal bearing	2
4	32128-20	5/16-18 Whizlock nut	23	40	323-4	3/8-16 x 3/4 HH capscrew	8
5	1-324408	Engagmt. arm w/bushing(32&36")	1	41	1-603843	Idler pulley (heavy duty)	1
6	302-52	Grease Zerk, 1/8 NPT straight	2	42*	1-324265	Cutter Housing Complete	2
7	302-19	Grease Zerk, 1/4-28 straight	1	43	322-5	5/16-18 x 1 HH capscrew	2
8	1-323385	Knob, belt cover	4	44	1-633573	Guard, bottom	2
9	1-809020	Quick pin, 10" caster	2	45	32120-8	Retaining ring	2
10	3296-29	5/16-18 Nyloc hex nut	2	46▽	1-513016	Bearing	4
11	323-8	3/8-16 x 1 1/2 HH capscrew	6	47	1-323532	Cutter housing	2
12	3290-357	3/8-16 whizlock nut	14	48	1-303314	Spacer, 10" caster	8
13	1-323748	Ring, push-on 7/16	1	49	1-323529	Tube, spindle	2
14	98-5975	3/8 Disc spring washer	7	50	1-323528	Spacer	2
15	1-808280	5/16 x 1 Clevis pin	1	51	1-303514	Flange , thrust bearing	4
16	1-303105	Yoke	1	52	1-323339	Retaining washer, sheave	2
17	1-806003	Cotter hairpin	3	53▽	1-403183	Pulley	2
18	32151-103	E-Ring for .875 rd.	1	54	3219-6	5/8-18 UNF hex nut	2
19	702809	3/8-16 x 1 7/8 capscrew	1	55	1-800861	5/8-18 x 8 HH Capscrew (Gr 5)	2
20	1-633482	Blade, Notched air foil (36")	2	56	1-807267	Key, 1/4 x 3/16 x 1 1/4	2
	1-613251	Blade, Solid air foil (36")	2	57	1-323539	Spacer, blade drive	8
•	1-633484	Blade, Mulching (36")	2	58	1-513208	5/8 Spring disc washer	2
	1-633485	Blade, Low Lift (36") optional	2	59	1-303434	Engagement bushing	1
	103-1578	Blade, Bahia (36")	2	60	1-303348	Eye bolt (left hand thread)	1
	1-413438	Blade, Solid air foil (32")	2	61	1-303236	Turnbuckle body	1
	1-323515	Blade, Notched air foil (32")	2	62	1-303238	Eye bolt (right hand thread)	1
•	1-403148	Blade, Mulching (32")	2	63	1-322235	Assist arm (32" & 36")	1
	1-403149	Blade, Low Lift (32") optional	2	64	322-10	Screw, 5/16-18 X 2	1
	103-1577	Blade, Bahia (32")	2	65	1-323303	Assist arm linkage	1
21	1-513338	Washer, special	2	66	1-322153	Caster/mount, complete	1
22	3253-7	1/2 spring lockwasher	2	67	1-302203	Caster wheel support w/bearings	2
23	3217-9	1/2-13 Hex nut	2	68	1-302194-01	Caster wheel support widmnt	2
24	325-20	1/2-13 x 6 HH capscrew	2	69	1-303334	5/16 Spring disc washer	8
25	1-303352	Washer, spindle	1	70	1-323533	Spacer	2
26◇	103-1224	Tire & Wheel Asm (semi-pneumatic)	2	71	1-634619	Housing w/Brg, Spacer and Ring	2
◇	1-513648	Tire & Wheel Asm (pneumatic)	2	72	3256-3	Wshr, flat std 5/16	1
	1-513809	Roller bearing (all)	1	73	1-323715	Rod, brake 36"	1
	1-513810	Bushing (all)	2		1-323718	Rod, brake 32"	1
	1-513807	Wheel & hub (pneumatic)	1	74	1-323071	Spring	1
	1-513808	Tire, 9 x 3.50-4 4-ply (pneumatic)	1	75	1-323747	Spring, compression	1
27	1-323733	Drive belt (to blades) 36" Model	1	76	1-323746	Spacer, flanged	2
	1-323734	Drive belt, (to blades) 32" Model	1	77	3296-42	Nut, nyloc 1/4 - 20	2
◆28	1-803310	Setscrew, 5/16-18 x 3/8	2	78	1-324372	Pad/spring assy	1
29	322-6	5/16-18 x 1 1/4 HH capscrew	9	79	321-4	Screw, HHCAP 1/4-20 X 3/4	2
30	1-513547	Spacer, front caster	2	81	1-403179	Tube, pivot	1
31	1-303537	Stud, belt shield (short)	2	82	3256-23	Wshr, flt SAE 5/16	1
32	1-303536	Stud, belt shield (long)	2	83	32120-35	E-ring	1
33	1-324208	Shield w/decals, 36" Metro	1				
	1-302213-01	Shield weldmt, 36" Metro	1				
	1-324194	Shield w/decals, 32" Model	1				
	1-322149-01	Shield weldmt, 32" Model	1				

- ◆ Use Pro-lock Nut Type (p/n 1-840022 .5 ml tube) on the setscrews
- Requires installation of Micro-Mulch accessory for proper mulching. Mulch kit P/N's MK322(32") or MK362(36")
- * Cutter housing complete includes sheave, washer, and nut and does not include blade.
- ★ Deck weldment does include welded in flow control baffles.
- ▽ Use antisieze on bore of sheaves & bearings.
Exmark red touch up spray paint - P/N 1-850337
- ◇ Caster tires with valve stems have pneumatic casters (order assembly part number 1-513648).
Caster tires without valve stems have semi-pneumatic casters (order assembly part number 103-1224).

ENGINE DECK GROUP



ENGINE DECK GROUP

Ref. No.	Part No.	Description	Qty. Req'd.	Ref. No.	Part No.	Description	Qty. Req'd.
1*	1-404257	Deck w/decals & dogleg (48")	1	47	322-6	5/16-18 1 1/4 HH capscrew	1
*	1-402108-01	Deck Weldmt, (48")	1	48	302-19	Zerk 1/4-28 strt	1
2	1-402107-01	Baffle, dogleg	1	49	3256-24	3/8 Flatwasher	2
3	322-2	5/16-18 x 5/8 HH capscrew	7	50	323-20	3/8-16 x 3 1/4 HH capscrew	1
4	32128-20	5/16-18 Whizlock nut	15	51	3296-56	Nut, nyloc 1/4-20 thin	1
5	3296-29	5/16-18 Nyloc hex nut	3	52	1-402106-01	Chute wldmt	1
6	323-7	3/8-16 x 1 1/4 HH capscrew	18	53	1-403179	Tube, pivot	1
7	3290-357	3/8-16 whizlock nut	17	54	3256-3	Washer, Flat Std 5/16	1
8	98-5975	3/8 disc spring washer	10	55	1-323714	Rod brake 48" LH	1
9	1-808280	5/16 x 1 Clevis pin	1	56	1-324372	Pad/spring assy	1
10	1-303105	Yoke	1	57	3256-23	5/16 SAE flat washer	1
11	1-613098	Idler pulley "V"	1	58	1-603843	Pulley, idler (heavy duty)	1
12	32151-103	E-Ring for .875 rd.	1	59	1-403174	Drive belt (main deck) 48"	1
13	1-323515	Blade, Notched air foil (48")	3	60	1-323746	Spacer, flanged	1
	1-413438	Blade, Solid air foil (48")	3	61	1-403184	Bushing	2
•	1-403148	Blade, mulching (48")	3	62	322-5	5/16-18 x 1 HH capscrew	2
	1-403149	Blade, Low Lift (48") optional	3	63	1-323533	Spacer	3
	103-1577	Blade, Bahia (48")	3	64	1-634619	Housing w/Brg, Spacer and Ring	3
14	1-323303	Assist arm linkage	1	65	1-322153	Caster/mount, complete	2
15♦	1-803310	Setscrew, 5/16-18 x 3/8	3	66	1-302203	Caster wheel support w/bearings	2
16	323-13	3/8-16 x 2 3/4 HH capscrew	2	67	1-302194-01	Caster wheel support wldmnt	2
17	3296-42	Nut, nyloc 1/4 - 20	2	68	1-302-52	Grease zerk, 1/8 N.P.T.	2
18	1-403186	Idler pulley	1	69	1-303514	Flange, thrust bearing	4
19*	1-324265	Cutter Housing Complete	2	70	1-303314	Spacer, 10" caster	8
20	1-633573	Guard, bottom	3	71	1-322154	Caster wheel assembly	2
21	32120-8	Retaining ring	3	72	1-322145-01	Fork wldmnt, caster	2
22▲	1-513016	Bearing	6	73	1-513547	Spacer, front caster	2
23	1-323532	Cutter housing	3	74◇	103-1224	Tire & Wheel Asm (semi-pneumatic)	2
24	702809	3/8-16 x 1 7/8 HH Capscrew	1	◇	1-513648	Tire & Wheel Asm (pneumatic)	2
25	1-323529	Cutter spindle tube	3		1-513809	Roller bearing (all)	2
26	1-323528	Spacer	3		1-513810	Bushing (all)	4
27	3296-39	Nut, nylock 3/8-16	18		1-513807	Wheel & hub (pneumatic)	2
28	1-807267	Key, 1/4 x 3/16 x 1 1/4	3		1-513808	Tire, 9 x 3.50-4 4-ply (pneumatic)	2
29▲	1-403183	Pulley	3	75	1-323417	Washer, belt cover mount	5
30	1-513208	5/8 Spring disc washer	3	76	323-4.	3/8-16 x 3/4 HH capscrew	8
31	1-800861	5/8-18x8 HH Capscrew(Gr5)	3	77	325-20	1/2-13 x 6 HH capscrew	2
32	1-323539	Spacer, blade drive	12	78	3217-9	1/2-13 Hex nut	2
33	1-323339	Washer, retainer (sheave)	3	79	3253-7	1/2 spring lockwasher	2
34	1-322230	Assist arm (48")	1	80	1-513338	Washer, special	2
35	3219-6	5/8-18 UNF hex nut	3	81	1-809020	Quick pin, 10" caster	2
36	1-303434	Engagement bushing	1	82	1-303537	Stud, belt shield (short)	2
37	1-303348	Eye bolt (left hand thread)	1	83	1-303536	Stud, belt shield (long)	3
38	1-303236	Turnbuckle body	1	84	1-323385	Knob, belt cover	5
39	1-303238	Eye bolt (right hand thread)	1	85	1-404238	Shield w/decals 48" Metro	1
40	1-323747	Spring, compression	1		1-402100-01	Shield weldmt, 48" Metro	1
41	1-806003	Cotter hairpin	3	86	1-403188	Spacer, belt guide	1
42	1-303352	Washer, spindle	1	87	323-8.	3/8-16 x 1 1/2 HH capscrew	6
43	322-10	Screw, 5/16-18 X 2	1	88	323071	Spring 5sp/dr idler	1
44	1-323729	Powder metal bearing	2	89	32120-35	E - ring	6
45	1-303334	Washer, Sprg Disc 5/16	1	90	321-4.	1/4-20 X 3/4 HH capscrew	2
46	1-402109	Engagmt. arm w/bushings (48")	1	91	1-323748	Ring, push-on 7/16	1

- ♦ Use Pro-lock Nut Type (p/n 1-840022 .5 ml tube) on the setscrews
- Requires installation of Micro-Mulch accessory for proper mulching. Mulch kit P/N's MK483
Exmark red touch up spray paint - P/N 1-850337
- * Deck weldmt does include welded in flow control baffles.
- * Cutter housing complete includes sheave, washer, and nut and does not include blade.
- ▲ Use antisieze on bore of sheaves & bearings.
- ◇ Caster tires with valve stems have pneumatic casters (order assembly part number 1-513648).
Caster tires without valve stems have semi-pneumatic casters (order assembly part number 103-1224).

ENGINE DECK GROUP

ENGINE DECK GROUP

Ref. No.	Part No.	Description	Qty. Req'd.	Ref. No.	Part No.	Description	Qty. Req'd.
1	1-402112-01	Rear deck	1	34▲	1-543233	Cap (hex) 3/8 NPT	1
2	1-323500	Transmission	1	35	98-5975	3/8 Spring disc washer	1
3	1-324340	Coupling, w/guard and zerk.....	2	36	3296-6	3/8-24 Hex nylock nut	1
4	1-323502	Output shaft, transmission.....	2	37	3257-5	3/16 x 3/4 Woodruff key	3
5▲	1-323326	Nipple (galvanized) 3/8 NPT x 3.0.....	1	38	1-303282	Neutral start switch.....	1
6	1-323252	Shaft bearing, transmission.....	2	39	3231-6	3/8-16 x 2 Carriage bolt, SSN	1
7	1-323254	Bearing flange, trans shaft	2	40	3256-5	7/16 Std. Flatwasher	2
8	1-323257-03	Sheave, 3 1/4" (36"&48").....	2	41	1-323285	Idler pulley, transmission drive.....	1
	1-323363-03	Sheave, 3 1/4" (32")	2	42	3256-24	3/8 SAE flatwasher.....	1
9	32151-62	Retaining ring	2	43	321-3	1/4-20 x 5/8 HH capscrew	4
10	1-805005	5/16 spring lockwasher	4	44	3296-42	1/4-20 Nyloc nut	4
11■●	1-323256	Sheave, trans. drive, 2 3/4"	1	45	1-603403	1/2 x 1 Shoulder bolt	1
12■	1-807264	1/4 sq. x 2 5/8 Key	1	46	1-301023	Sulky Hitch Kit, Metro	1
13	1-323280	Belt, transmission.....	1	47	1-513051	Blade engagement switch	1
14	3290-357	3/8-16 Whizlock nut	7	48	322-3	5/16-18 x 3/4 HH capscrew	4
15	3296-39	3/8-16 Nyloc nut	1	49	3290-500	10-24 x 5/8 Pan Hd.....	2
16	1-323387-03	Shifter plate	1	50	3296-2	10-24 Nyloc nut	2
17	1-323389-03	Leg, shifter lever.....	2	51	1-323376-03	Shift lever	1
18	3230-1	5/16-18 x 3/4 Carriage bolt.....	2	52	1-323250	Foam grip	1
19	32128-20	5/16-18 Whizlock nut	2	53	302-19	1/4-28 Grease zerk (straight)	2
20	51-4220	Guard coupler	2	54▽■	1-643292	Pulley,blade drive (6 1/8")(36").....	1
21	1-323526	Ball S.S detent	1	▽■	1-403160	Pulley,blade drive(6 3/4")(32"&48")..	1
22	1-323228-01	Spacer, belt guide (32" and 36")	2	55■◇	1-803310	5/16-18 x 3/8 Cuppoint setscrew.....	3
	1-323228-01	Spacer, belt guide (48")	3	◇	1-803310	5/16-18 x 3/8 Cuppoint setscrew.....	2
23	1-301024	Kit, Metro transmission.....	1	56■◇	1-803050	5/16-18 x 3/4 Sq. setscrew.....	2
24	1-303334	5/16 disc spring washer	4	57◇	3245-41	1/4-20 x 3/8 Cuppoint setscrew.....	2
25	32128-20	5/16-18 Whizlock nut	4	58	1-323379	Washer, shifter lever	1
		(15 HP Kaw Engine)		59	1-373034	Washer, flat.....	2
26*	322-7	5/16-18 x 1 1/2 HH capscrew	4	60 ◇	3212-6	Screw,7/16-20x1 1/2	1
		(15 HP Kaw Engine)				(15 HP Kaw & All Kohler)	
*	33114-025	M8-1.25 x 25mm HH capscrew	4	◇	33115-035	Screw,M10x1.5x35 (13 HP Kaw).....	1
		(13 HP Kaw & All Kohler)		61	1-633453	Spacer,tube	1
27	323-13	3/8-16x2 3/4 HH Capscrew	1	62	1-603610	Washer,disc spring	2
28▲	1-303431	St. Elbow (brass) 3/8 NPT.....	1		98-5975	Washer,disc spring (13 HP Kaw)	1
29	323-6	3/8-16 x 1 HH capscrew	4				
30	1-323318	Hitch bracket.....	2	63 ▽	103-1666	Sheave, trans. drive, 2 3/4"	1
31	9264964	5/16-18 x 3/4 Tapping screw.....	4	64 ▽	103-1668	Pulley,blade drive (6 1/8")(36").....	1
32	1-303186	Bell crank.....	1	▽	103-1667	Pulley,blade drive(6 3/4")(32"&48")..	1
33▽	1-323278	Sheave, transmission drive	1	65	5-1336	Key,1/4 sq x 2	1

◇ Use Pro-lock (Nut type) Part No. 1-840022 (.5ml tube) on setscrew threads and on sheave retaining bolt in engine crankshaft (sheave mounting Type B only)

▽ Apply anti-seize compound to bore of blade drive pulley on engine, drive pulley on transmission, and to bore of transmission drive pulley on engine (sheave mounting Type B only)

▲ Use Teflon Pipe Sealant (or equivalent) on all pipe threads.

* Torque Engine Mounting Bolts: 15 HP Kaw to 15-20 ft-lbs / Kohler & 12.5 HP Kaw to 25-30 ft-lbs.

● Use Pro-lock (Retaining Type) Part No. 1-840023 (.5ml tube) on transmission pulley on engine (sheave mounting Type A only).

Exmark red touch up spray paint - P/N 1-850337

Exmark black touch up spray paint - Gloss black

Reference diagram on page 6 to determine if your unit uses sheave mounting method A or B.

■ A component used with sheave mounting method A. Sheaves are retained to engine crankshaft by setscrews in hubs of sheaves.

A component used with sheave mounting method B. Sheaves are retained to engine crankshaft by a bolt threaded into the end of crankshaft.

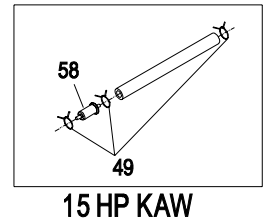
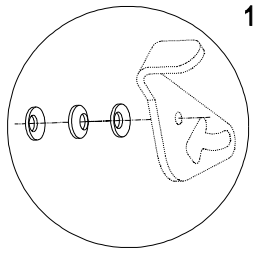
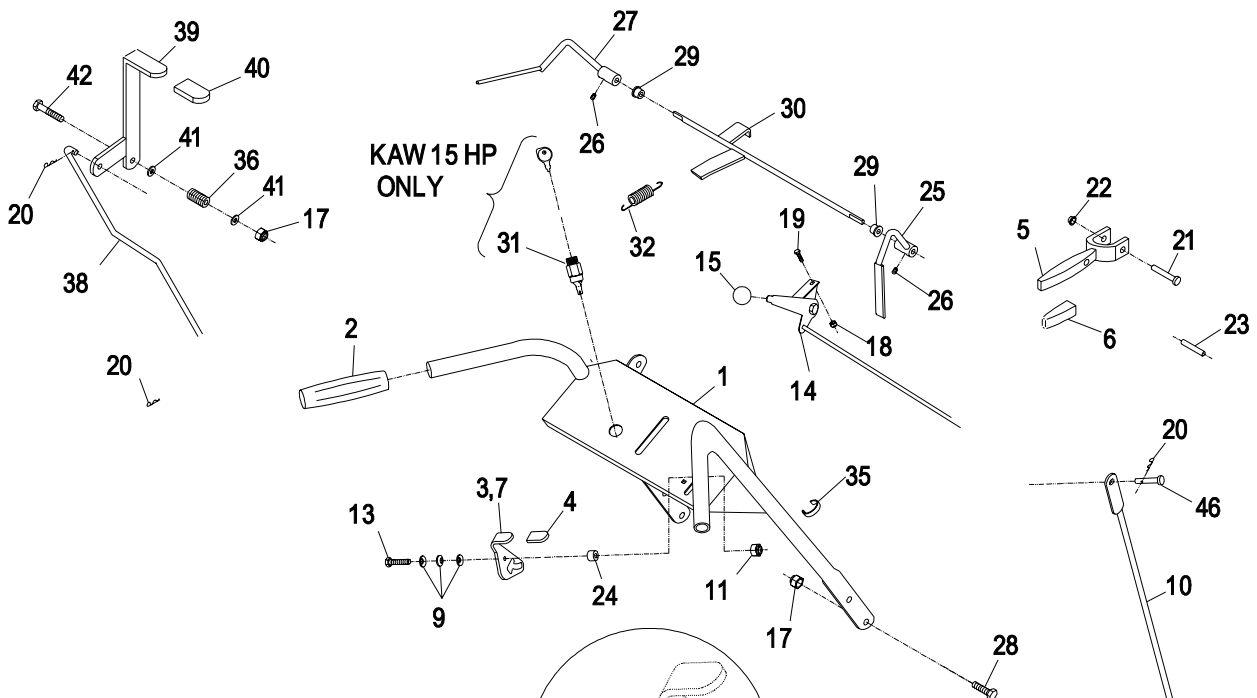
ENGINE DECK GROUP (con't)

ENGINE DECK GROUP (con't)

Ref. No.	Part No.	Description	Qty. Req'd.	Ref. No.	Part No.	Description	Qty. Req'd.
1	103-0417-03	Brake arm wldmnt	2	27	98-5975	3/8 Disc spring washer	4
2	302-19	1/4-28 Grease zerk (straight).....	4	28	1-323307	3/8 Clevis pin	2
3	1-322117-03	Axle wldmnt (36" & 48" Models)	1	29	1-803051	3/8 Pushnut	2
	1-322141-03	Axle wldmnt (32" Model)	1	30	1-323368	Swivel, short adjust	2
4	32151-73	Klipring (for .31 shaft)	2	31	323-6	3/8-16 x 1 HH capscrew	4
5	1-322119-03	Idler arm wldmnt (LH)	1	32	1-324367	Drive wheel (36"&48" Models)	2
6	1-806003	Cotter hairpin, #2	2		1-324193	Drive wheel (32" Model)	2
7	1-322121-03	Idler arm wldmnt (RH)	1	33	1-323253	Sheave (36" & 48" Model)	4
8	32151-47	Klipring (for 3/8 shaft)	4		1-323349	Sheave (32" Model)	2
9	1-323288	Belt, wheel drive(36"&48" Models) ..	2	34	1-323260	Spacer, sheave (36" & 48" Model)	8
	1-323344	Belt, wheel drive (32" Model).....	2	35	1-323261	Brake drum	2
10	32128-20	5/16-18 Whizlock nut.....	4	36	1-323719	Wheel & Tire (36"&48"Models)	2
11	1-323262	Brake band	2		1-323346	Wheel & Tire (32" Model)	2
12	1-322125	Swivel wldmnt, brake linkage	2	37	1-323720	Tire, 13 x 6.50-6 (4-ply) (36"&48")	1
13	1-412358	Scraper wldmnt(36"&48" Models)....	2		1-323361	Tire, 13 x 5.00-6 (4-ply) (32").....	1
	1-603430	Scraper (32" Model)	2	38	1-323328	Wheel & hub w/brgs (36"&48")	1
14	3296-29	5/16-18 Nyloc nut	4		1-323360	Wheel & hub w/brgs (32")	1
15	1-323277	Idler pulley (36"&48" Models)	2	39	1-323329	Bearing, flanged	4
	1-323352	Idler pulley (32" Model).....	2	40	322-5	5/16-18 x 1 HHCS (32")	8
16	322-6	5/16-18 x 1 1/4 HH capscrew.....	2		322-6	5/16-18 x 1 1/4 HHCS (36"&48")	8
17	99-8664	3/8-16 x 3 HH Tap bolt.....	2	41	1-805005	5/16 Spring washer	8
18	3290-357	3/8-16 Whizlock nut.....	14	42	32120-47	E-Ring (for 1/2" shaft)	2
19	3296-39	3/8-16 Nyloc nut	4	43	1-323245	Spring, Compression.....	2
20	1-323287-01	Shield, wheel drive.....	2	44	1-808519	E-Ring (for 1" shaft)	2
21	1-323283	Spacer	4	45	1-373034	Swivel washer (32" Model only).....	4
22	1-603402	Drive spring	2	46	3256-23	5/16 SAE Flat washer	4
23	1-323548	Brake rod	2	47	98-3259	Shield, Trailing.....	1
24	1-513959	5/16-18 Nyloc wingnut	2	48	322-3	5/16-18 x 3/4 HH capscrew	2
25	323-39	3/8-16 x 5 HH capscrew.....	4	49	2412-104	R-Clamp.....	1
26	1-523157	Spacer, wheel (14 Ga.).... As Req'd.					
	1-543436	Spacer, wheel (18 Ga.).... As Req'd.					

Exmark black touch up spray paint - Gloss black

UPPER HANDLES & CONTROLS



UPPER HANDLES & CONTROLS

Ref. No.	Part No.	Description	Qty. Req'd.	Ref. No.	Part No.	Description	Qty. Req'd.
1	103-0211	Handle wldmnt(1-322227-03)	1	36	1-303160	Spring,compression	1
2	1-303097	Handle grip	2	37	3256-23	Washer, 5/16 SAE	1
3*	1-324279	Latch w/grip (left).....	1	38	1-323298	Linkage, blade drive.....	1
4	1-303019	Grip, latch	2	39	1-322157	Engagmt. lever, blade w/grip	1
5	1-302006	Drive lever w/grip.....	2	40	1-303020	Grip, lever	1
6	1-303021	Grip, drive lever	2	41	3256-4	3/8 Std. flatwasher	2
7	1-324280	Latch w/grip (right).....	1	42	323-10	3/8-16 x 2 HH capscrew.....	1
8	1-323229	Clip, 3/8 Loom (Kaw).....	2	43	1-303335	Plastic tie, large	2
9	1-303435	Washer, 1/4 disc spring	6	44	1-413179	Tank, gas.....	1
10	1-323359	Linkage, wheel drive.....	2	45	1-513508	Cap, fuel tank	1
11	3296-42	1/4-20 Nyloc nut	3	46	1-808286	Clevis pin	2
12	3256-2	1/4 STD. Flatwasher	1	47	1-513645	Bushing, fuel tank.....	1
13	321-18	1/4-20 x 2 1/4 HH capscrew	2	48	1-543277	Elbow, 90°	1
14	1-323322	Throttle cable(12.5HP Kaw & Koh)	1	49	1-303077	Clamp, fuel line (15 HP Kaw).....	4
	1-413428	Throttle cable (15 HP Kaw).....	1		1-303077	Clamp, fuel line (12.5 HP Kaw)	5
15	1-513592	Knob, (red ball)	1		1-303077	Clamp, fuel line (Kohler).....	6
16	1-303287	Plastic tie, 5 1/2" (Kaw)	5	50	321-4	1/4-20 x 3/4 HH capscrew.....	1
	1-303287	Plastic tie, 5 1/2" (Koh).....	3	51	1-323229	Clip, 3/8 Loom (Kohler)	1
17	3296-39	3/8-16 Nyloc nut.....	5	52♦	1-323430	Interlock, OPC	1
18	3296-2	10-24 Nyloc hex nut.....	2	53	1-303197	Gas filter (12.5 HP Kaw & Kohler) ..	1
19	1-807513	10-24 x 1/2 Carriage bolt.....	2	54	1-603776	Fuel line, 2.5" (12.5HP Kaw&Koh)..	1
20	1-806003	Hairpin cotter	4	55	1-543296	Grommet	1
21	1-808250	3/16 x 1 3/4 Clevis pin	2	56	1-603770	Fuel valve	1
22	1-803001	3/16 Palnut	2	57	1-303308	Clamp, fuel line (12.5 HP Kaw) ...	1
23	1-806340	5/16 x 1 Rollpin.....	2	58	Kawasaki PN 41019-1055 w/6" fuel line	1	
24	1-323549	Spacer.....	4	59	1-603955	Fuel line, 6" (Kaw, Koh)	1
25♦♦	1-412185-03	Lever, OPC (RH).....	1	60	1-323511	Wiring harness (12.5 HP Kaw)	1
26♦	1-803322	5/16-24 Setscrew.....	2		1-323512	Wiring harness (Kohler)	1
27♦♦	1-412183-03	Lever, OPC (LH)	1		1-323740	Wiring harness (15 HP Kaw).....	1
28	323-6	3/8-16 x 1 HH capscrew	4	61•	1-633023	Stud, gas tank	2
29	1-303365	Nylon bushing.....	2	62	1-633349	Spring, gas tank	2
30	1-322192-03	Connecting rod.....	1	63	1-513051	Switch	1
31	1-403121	Switch, key (15 HP Kaw)	1	64	1-633181	Plate, tapped	1
	1-603511	Key, Ignition (15 HP Kaw).....	1	65	3290-500	Screw.....	2
32	1-303363	Actuator spring.....	1	66	1-805005	Washer Lock 5/16	2
33	1-303022	Fuel line, 8.5" (12.5 HP Kaw)	1	67	3296-47	Nut, Nyloc 5/16-18	2
34	1-603954	Fuel line, 13.75" (Kohler).....	1	68	322-3	Screw, 5/16-18X3/4	2
35	1-303088	Cable clip	1				

♦ Use Pro-lock (Nut type) Part No. 1-840022 (.5 ml tube) on setscrew threads.

• Use Pro-lock (Retaining) Part No. 1-840023 (.5 ml tube) on inside of OPC hub (See Operator's Manual) & on fuel tank studs

♦ OPC refers to Operator Presence Control.

* Not illustrated.

NOTE: Use dielectric grease on all electrical connections.

Exmark black touch up spray paint - Gloss black

DECALS

1

2 COMMERCIAL 32

3 COMMERCIAL 36

4 CAUTION MUFFLER AND SHIELDS MAY EXCEED 160 F

5

6 CAUTION ALL CHAIN DRIVES TO CHECK PEOPLE MINUTE RESPONSE REFUELING

7 COMMERCIAL 48

8 2 MINUTE COOL TRI VANTAGE

9 PARK BRAKE DRIVE NEUTRAL LOCK

10

11

12 WARNING DO NOT OPERATE WITHOUT DISCHARGE DEFLECTOR OR ENTIRE GRASS COLLECTION SYSTEM IN PLACE. DO NOT REMOVE GRASS CATCHER UNTIL BLADES HAVE STOPPED.

13 DANGER KEEP HANDS and FEET AWAY

14 SQUEEZE DRIVE LEVERS BEFORE SHIFTING R N 1 2 3 4 5

15

16

17 WARNING OPEN BELT DRIVE! STOP ENGINE BEFORE REACHING UNDERNEATH.

18 WARNING Use Only Exmark Riding Attachments. Use of Other Riding Attachments May Create a Hazardous Condition Resulting in Injury

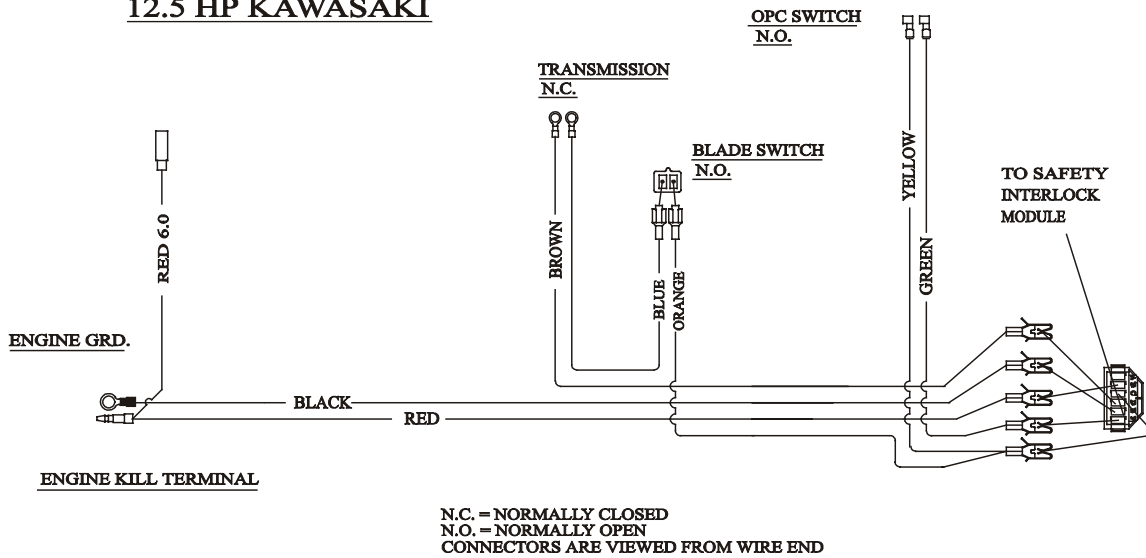
19

20

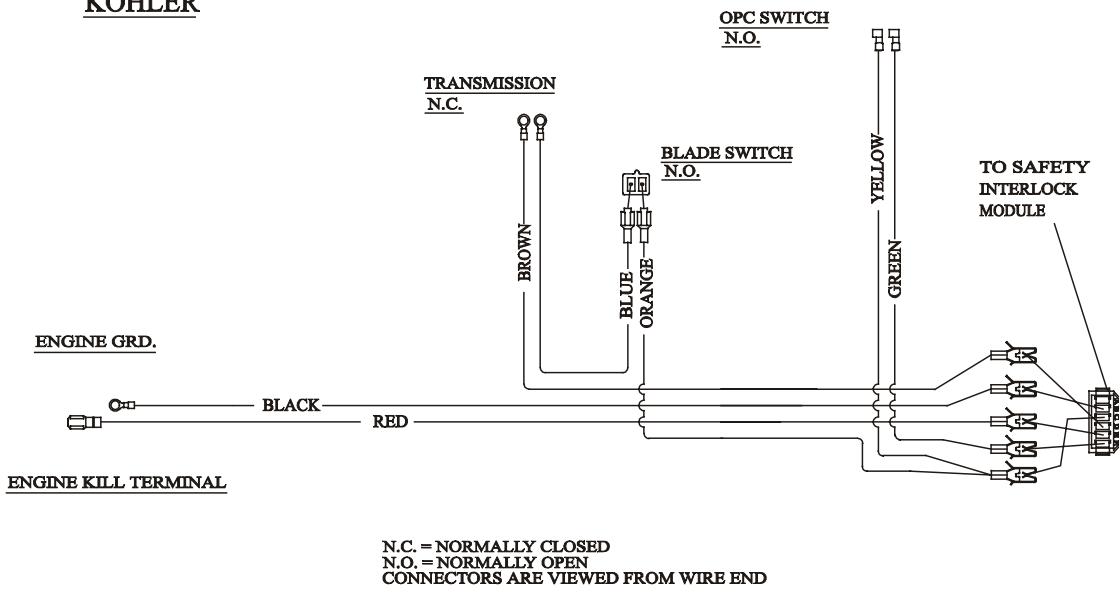
Ref. No.	Part No.	Description	Qty. Req'd.	Ref. No.	Part No.	Description	Qty. Req'd.
1	1-323412	Decal, Large Metro	1	12	1-303508	Decal, Discharge Warning	1
2	1-323410	Decal, Commercial 32"	1	13	1-403005	Danger, Label	2
3	1-323411	Decal, Commercial 36"	1	14	1-303518	Decal, Shifter	1
4	1-513746	Decal, Muffler	1	15	1-323691	Decal, Throttle (15 HP Kaw)	1
5	1-323312	Decal, Small Metro	1	16	103-0168	Decal, Console (15 HP Kaw)	1
6	1-303293	Decal, 2 Minute Cool	1	17	1-303517	Decal, Belt Drive	1
7	1-403131	Decal, Commercial 48"	1	18	1-403143	Decal, Sulky Warning	1
8	1-303520	Decal, TriVantage	1	19	1-323427	Decal, Belt Routing (32" & 36")	1
9	1-323550	Decal, Neutral/Brake	2	20	1-403170	Decal, Belt Routing (48")	1
10	103-0169	Decal, Console(12.5 Kaw,Koh)	1		1-321016	Decal, Kit	
11	1-323689	Decal, Throttle (12.5 Kaw,Koh)	1				

WIRING DIAGRAMS

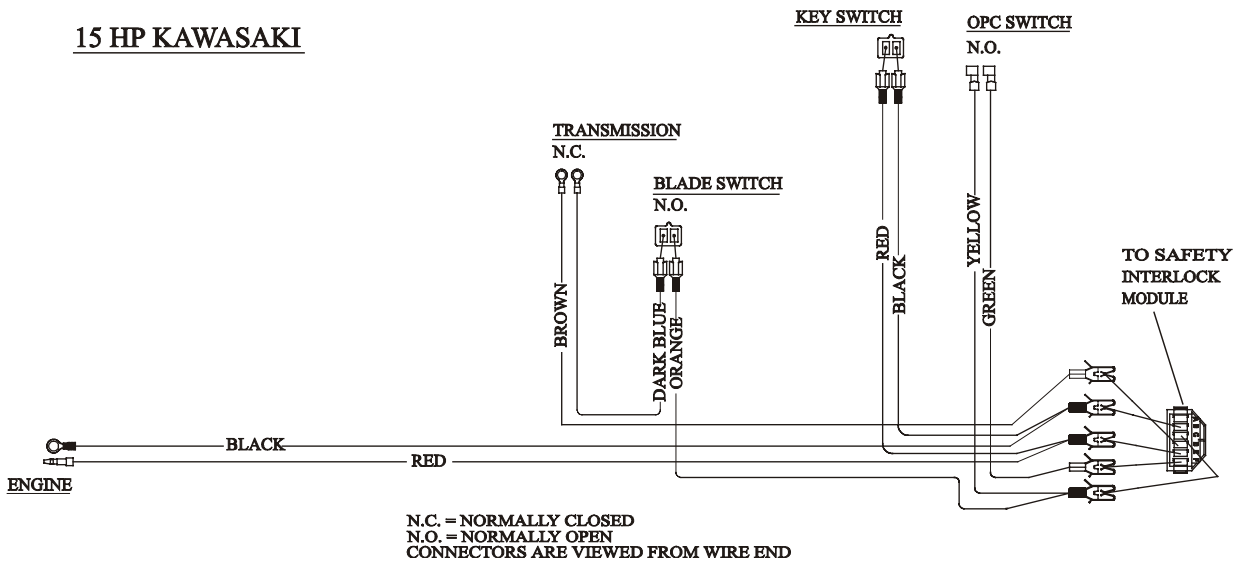
12.5 HP KAWASAKI



KOHLER



15 HP KAWASAKI



SEE EXMARK'S COMPLETE
LINE OF PRODUCTS FOR TURF CARE

LAZER Z[®]

LAZER Z[®] HP

LAZER Z[®] XP

TURF RANGER[®]

TURF TRACER[®]

TURF TRACER[®] HP

VIKING HYDRO

METRO[®]

METRO[®] HP

SELF STEERING SULKY

GRASS CATCHER

MICRO-MULCH[™] ACCESSORY

©1997, 1998, 1999, 2000, 2001
EXMARK MFG. CO. INC.
INDUSTRIAL PARK BOX 808
BEATRICE, NE 68310
ALL RIGHTS RESERVED

PART NO. 103-0571 Rev B
(402) 223-6300
FAX (402) 223-5489
PRINTED IN U.S.A.

