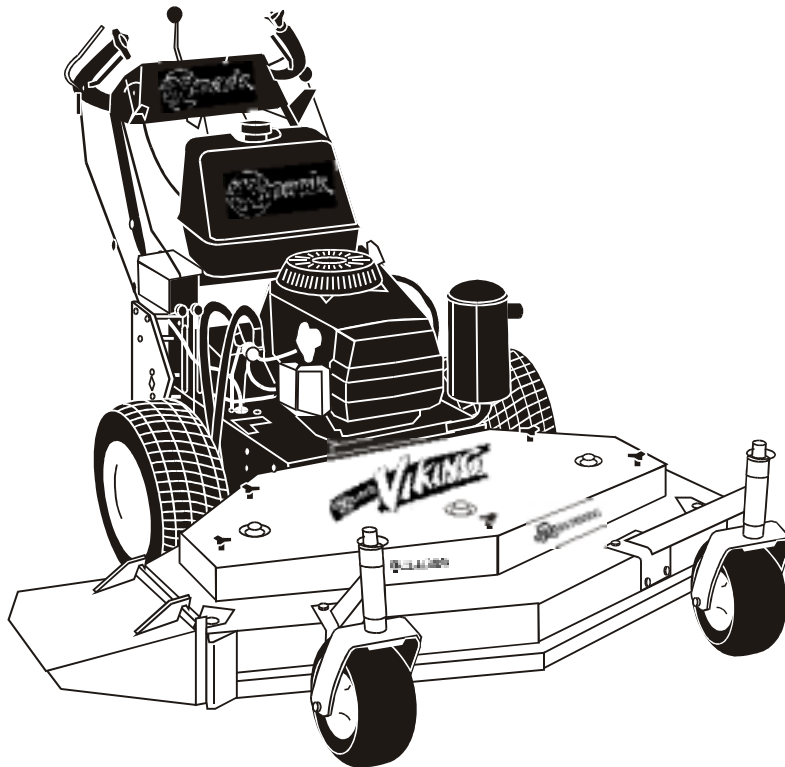


For Serial Nos.
320,000 & Higher



PARTS MANUAL

VIKING HYDRO

CONGRATULATIONS on the purchase of your new Exmark mower. This product has been carefully designed and manufactured to give you a maximum amount of dependability and years of trouble-free operation. If additional information is needed, or should you require trained mechanic service, contact your authorized Exmark equipment dealer or distributor. If you need to order replacement parts from your dealer, always give the model number and serial number of your mower as well as the part number, description and quantity of the part needed.

The Serial No. plate is located on the top front engine frame on the right hand side of the machine. For ease of ordering and reference, we suggest that you record the information requested in the following identification table.

Place Model No. and Serial No. Label Here
(Included in Literature Pack)
or Fill in Below

Model No. _____

Serial No. _____

Engine Model No. and Spec. No. (Code) _____

Engine Serial No. (E/No) _____

Date Purchased _____

Part No. 103-1745 Rev C.

EXMARK PARTS PLUS® PROGRAM

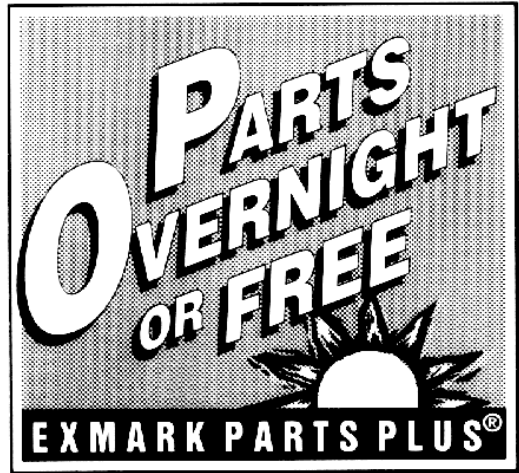
EFFECTIVE DATE: September 1, 1995

Program

If your Exmark dealer does not have the Exmark part in stock, Exmark will get the parts to the dealer the next business day or the part will be FREE* Guaranteed!!

How the Program Works

1. If dealer does not have part in stock for a "down" unit at the time of request by customer, the dealer contacts his distributor by 1:00 p.m., local time, and requests Exmark Parts Plus® shipment of six (6) line items or less.
2. Distributor ships part(s) to dealer or customer, as requested by dealer, same day, overnight UPS. Distributor bills dealer for part and freight charges where applicable.
3. If distributor does not have the part(s) in stock to satisfy Exmark Parts Plus® order, he contacts Exmark by 3:00 p.m., central time, with an Exmark Parts Plus® order of six (6) line items or less.
4. If order is received by 3:00 p.m. central time, Exmark ships part(s) direct to dealer or customer, as requested by distributor, same day, overnight UPS. Exmark bills the distributor for parts and shipping charges, where applicable.
5. The customer pays for the part and freight if it is shipped under the Exmark Parts Plus® and if it arrive in accordance to the program.
6. Who pays for the part and freight if it fails to arrive overnight in accordance to the program?
 - A. Under any circumstance the customer does not pay.
 - B. If the part does not arrive overnight due to:
 1. The dealer not submitting the Exmark Parts Plus® order to his Exmark distributor by 1:00 p.m., the dealer pays for the part and freight.
 2. The Distributor being unable to ship the part the same day or not submitting the Exmark Parts Plus® order to Exmark by 3:00 p.m., central time, the Distributor pays for the part and freight.
 3. Exmark being unable to ship the part and the Exmark parts order is received by 3:00 p.m., central time, Exmark pays for the part and freight.
 4. If the part does not arrive overnight due to the shipper (UPS), the shipper pays for the freight and Exmark pays for the part.



The following restrictions apply -- The Exmark Parts Plus® Program is available only through participating Exmark Dealers and applies only to orders submitted on this program Monday through Thursday. Parts Plus service is available only in the 48 contiguous United States. UPS has initiated a Saturday delivery program to many areas of the continental United States and can be requested for an overnight shipment on Friday to be delivered Saturday. The next day air charge, plus the Saturday delivery fee will be the responsibility of the purchaser. Exmark Mfg. will assume no responsibility for Saturday delivery shipments. To qualify, all Exmark Parts Plus® orders must be received by Exmark by 3:00 p.m., central time. Orders must be six (6) line items or less. Exclusions from the Exmark Parts Plus® Program are: Any wholegood or accessory in its entirety, engines and engine replacement parts, 5-speed Peerless transmissions and 5-speed transaxles, hydraulic or hydrostatic wheel motors, cutter decks and engine decks or any item exceeding United Parcel Service size and weight restrictions.

Due to UPS restrictions, aerosol spray paint is considered a hazardous material and cannot be shipped via UPS next day or Second Day Air.

Exmark Manufacturing stocks a limited supply of parts for transaxles, pumps and wheel motors. These parts can be ordered for Next Day Air shipment but will not be guaranteed per the Parts Plus Program.



**READ OPERATOR'S MANUAL BEFORE
OPERATING OR SERVICING EXMARK EQUIPMENT.**

TABLE OF CONTENTS

<u>Description</u>	<u>Page</u>
Decals.....	11
Electrical Group	14
Engine Deck Group.....	6-9
48" Mower Deck	4-5
Hydraulics Group	10
32" & 36" Mower Deck	2-3
ECS Upper Handles & Controls	12-13
Wiring Diagrams	15

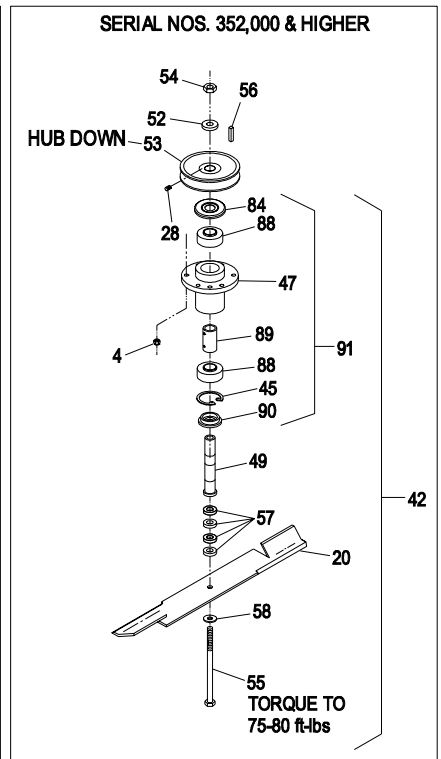
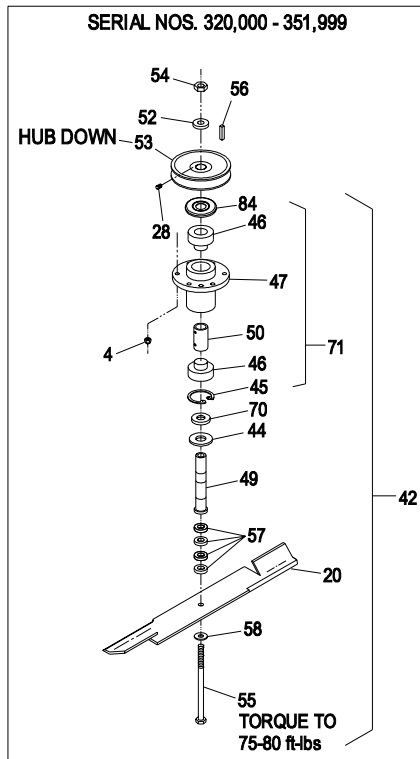
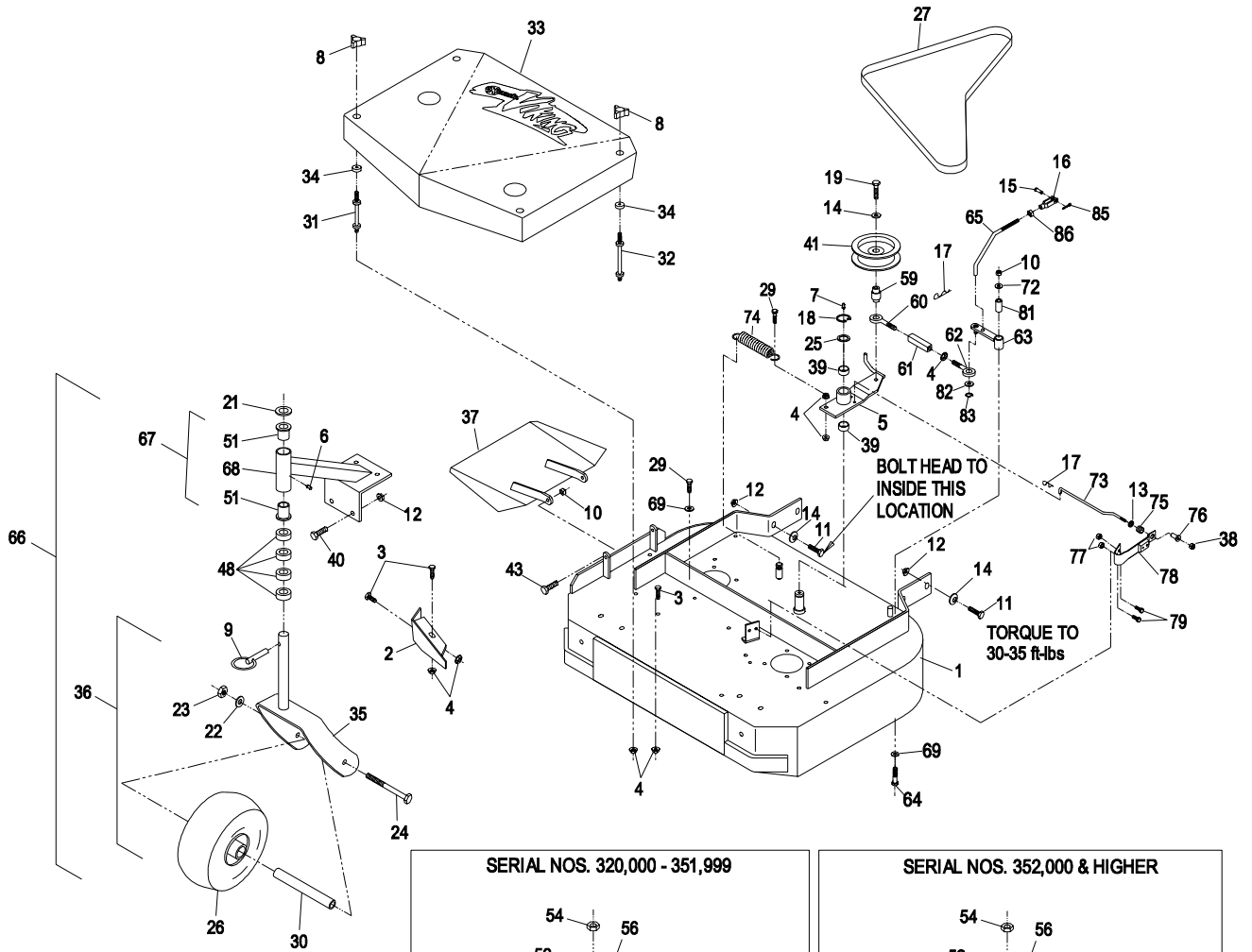
32" & 36" MOWER DECK

Ref. No.	Part No.	Description	Qty. Req'd.	Ref. No.	Part No.	Description	Qty. Req'd.
1	103-2312	Deck(103-2307-01)w/decals & dogleg (36")	1	41	1-603843	Idler pulley (heavy duty).....	1
	103-2313	Deck(103-2301-01)w/decals & dogleg (32")	1	42	103-2555	Cutter Housing Complete	2
2	1-302189-01	Baffle wldmnt, dogleg	1	43	322-5	5/16-18 x 1 HH capscrew	2
3	322-2	Screw, 5/16-18 x 5/8.....	7	44	1-633573	Guard, bottom.....	2
4	32128-20	5/16-18 Whizlock nut.....	22	45	32120-8	Retaining ring	2
5	1-324408	Engagement arm w/bushing.....	1	46+	1-513016	Bearing	4
6	302-52	Grease Zerk, 1/8 NPT straight.....	2	47	1-323532	Cutter housing	2
7	302-19	Grease Zerk, 1/4-28 straight.....	1	48	1-303314	Spacer, 10" caster	8
8	1-323385	Knob, belt cover.....	4	49+	1-323529	Tube, spindle	2
9	1-809020	Quick pin, 10" caster.....	2	50	1-323528	Spacer	2
10	3296-29	5/16-18 Nyloc hex nut.....	3	51	1-303514	Flange , thrust bearing	4
11	323-6	3/8-16 x 1 HH capscrew	6	52	1-323339	Retaining washer, sheave	2
12	3290-357	3/8-16 whizlock nut.....	14	53+	1-403183	Pulley	2
13	1-323748	Ring, push-on 7/16	1	54	3219-6	5/8-18 UNF hex nut	2
14	98-5975	3/8 Disc spring washer	7	55	1-800861	5/8-18 x 8 HH Capscrew (Gr 5)	2
15	1-808280	5/16 x 1 Clevis pin	1	56	1-807267	Key, 1/4 x 3/16 x 1 1/4.....	2
16	1-303105	Yoke	1	57	1-323539	Spacer, blade drive.....	8
17	1-806003	Cotter hairpin.....	2	58	1-513208	5/8 Spring disc washer	2
18	32151-103	E-Ring for .875 rd.	1	59	1-303434	Engagement bushing.....	1
19	702809	3/8-16 x 1 7/8 capscrew.....	1	60	1-303348	Eye bolt (left hand thread)	1
20	103-2528	Blade, Notched (36")	2	61	1-303236	Turnbuckle body	1
•	103-2518	Blade, Mulching (36")	2	62	1-303238	Eye bolt (right hand thread)	1
	103-2508	Blade, Low Lift (36") optional.....	2	63	1-322235	Assist arm (32" & 36").....	1
	103-1578	Blade, Solid (36").....	2	64	322-10	Screw, 5/16-18 X 2	1
	103-2527	Blade, Notched (32")	2	65	1-323174	Assist arm linkage	1
•	103-2517	Blade, Mulching (32")	2	66	103-2281	Caster/mount, complete	2
	103-2507	Blade, Low Lift (32") optional.....	2	67	103-2296	Caster wheel support w/brgs, weighted ..	2
	103-1577	Blade, Solid (32").....	2	68	103-2297-01	Caster wheel support wldmnt, weighted..	2
21	1-513338	Washer, special.....	2	69	1-303334	5/16 Spring disc washer	9
22	3253-7	1/2 spring lockwasher.....	2	70	1-323533	Spacer	2
23	3217-9	1/2-13 Hex nut.....	2	71*		Housing w/Brg, Spacer and Ring.....	2
24	325-20	1/2-13 x 6 HH capscrew	2	72	3256-3	Wshr, flat std 5/16	1
25	1-303352	Washer, spindle.....	1	73	1-323715	Rod, brake 36".....	1
26	103-1224	Tire & Wheel Asm.....	2		1-323718	Rod, brake 32"	1
	1-513809	Roller bearing	1	74	1-323071	Spring	1
	103-2170	Bushing.....	2	75	1-323747	Spring, compression.....	1
27	1-323735	Drive belt (to blades) 36" Model.....	1	76	1-323746	Spacer, flanged	1
	1-323733	Drive belt, (to blades) 32" Model.....	1	77	3296-42	Nut, nyloc 1/4 - 20	2
28♦	1-803310	Setscrew, 5/16-18 x 3/8	2	78	1-324372	Pad/spring assy	1
29	322-6	5/16-18 x 1 1/4 HH capscrew	9	79	321-4	Screw, HHCap 1/4-20 X 3/4	2
30	103-2169	Spacer, front caster	2	81	1-403179	Tube, pivot.....	1
31	1-303537	Stud, belt shield (short).....	2	82	3256-23	Wshr, flt SAE 5/16	1
32	1-303536	Stud, belt shield (long).....	2	83	32120-35	E-ring	1
33	1-302218	Shield (1-302213-01) w/decals, (36") ..	1	84	103-1330	Guard,Bearing top	2
	103-2589	Shield (1-322149-01) w/decals, (32") ..	1	85	3272-5	Cotter pin 3/32 x 1/2	1
34	1-323417	Washer, belt cover mount.....	4	86	3219-2	5/16-24 Hex nut	1
35	1-322145-01	Fork wldmnt, caster	2	87▲	103-2171	Kit,semi-pneumatic wheel replacement.....	2
36	103-1236	Caster wheel assembly.....	2	88+	103-2477	Bearing	4
37	1-302233-01	Chute	1	89	103-2534	Spacer	2
38	3296-56	Nut,nyloc 1/4-20 thin.....	1	90	103-2535	Spacer	2
39	1-323729	Powder metal bearing.....	2	91	103-2547	Cutter housing assembly.....	2
40	323-4	3/8-16 x 3/4 HH capscrew	8				

Exmark red touch up spray paint - P/N 1-850337

- ♦ Use Pro-lock Nut Type (p/n 1-840022 .5 ml tube) on the setscrews
- Requires installation of Micro-Mulch accessory for proper mulching. Mulch kit P/N's MK322(32") or MK362(36")
- ▲ Kit 103-2171 used to install semi-pneumatic casters on machines originally fitted with pneumatic casters. Includes 103-1224 & 103-2169. Order 2 per machine.
- + Apply Mobil HTS grease (or a food-grade antisieze) between the spindles & bearings and spindles & sheaves.
- * This assembly now serviced by 103-2547.

32" & 36" MOWER DECK



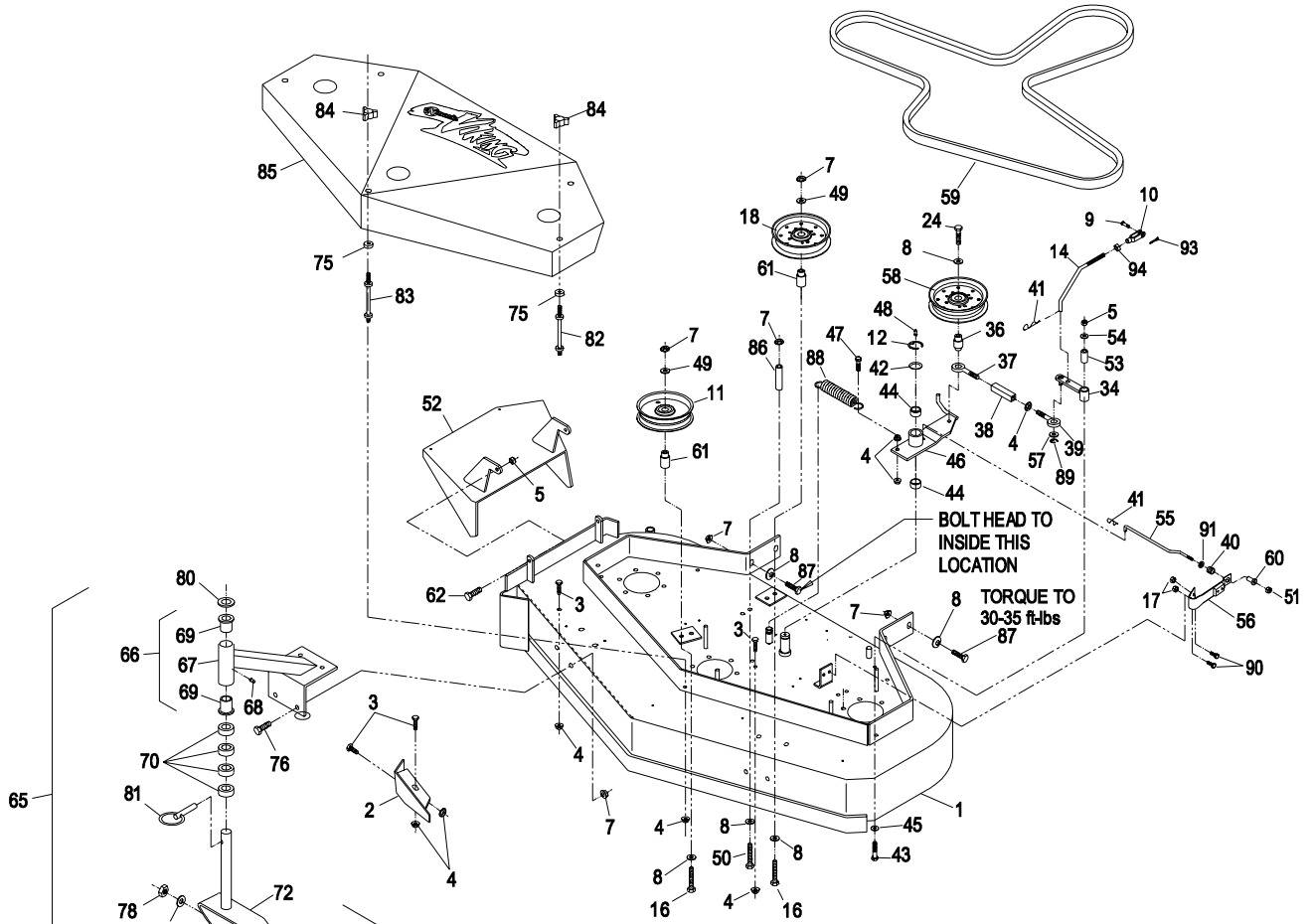
48" MOWER DECK

Ref. No.	Qty.	Part No.	Description	Req'd.	Ref. No.	Qty.	Part No.	Description	Req'd.
1	1	1-404257	Deck (1-402108-01) w/decals & dogleg ..	1	50	1	323-20	3/8-16 x 3 1/4 HH capscrew	1
2	1	1-402107-01	Baffle, dogleg	1	51	1	3296-56	Nut, nyloc 1/4-20 thin	1
3	4	322-2	5/16-18 x 5/8 HH capscrew	4	52	1	1-402106-01	Chute wldmt	1
4	12	32128-20	5/16-18 Whizlock nut.....	12	53	1	1-403179	Tube, pivot	1
5	3	3296-29	5/16-18 Nyloc hex nut.....	3	54	1	3256-3	Washer, Flat Std 5/16	1
6	18	323-7	3/8-16 x 1 1/4 HH capscrew	18	55	1	1-323714	Rod brake 48" LH	1
7	17	3290-357	3/8-16 whizlock nut.....	17	56	1	1-324372	Pad/spring assy.....	1
8	10	98-5975	3/8 disc spring washer.....	10	57	1	3256-23	5/16 SAE flat washer.....	1
9	1	1-808280	5/16 x 1 Clevis pin	1	58	1	1-603843	Pulley, idler (heavy duty).....	1
10	1	1-303105	Yoke	1	59	1	1-403174	Drive belt (main deck)	1
11	1	1-613098	Idler pulley "V"	1	60	1	1-323746	Spacer, flanged	1
12	1	32151-103	E-Ring for .875 rd.	1	61	2	1-403184	Bushing	2
13	3	103-2527	Blade, Notched	3	62	2	322-5	5/16-18 x 1 HH capscrew.....	2
•	3	103-2517	Blade, mulching	3	63	3	1-323533	Spacer.....	3
	3	103-2507	Blade, Low Lift (optional).....	3	64*	3		Housing w/Brg, Spacer and Ring	3
	3	103-1577	Blade, Solid	3	65	2	103-2281	Caster/mount, complete.....	2
14	1	1-323174	Assist arm linkage	1	66	2	103-2296	Caster wheel support w/brgs, weighted..	2
15♦	3	1-803310	Setscrew, 5/16-18 x 3/8.....	3	67	2	103-2297-01	Caster wheel support wldmnt, weighted .	2
16	2	323-13	3/8-16 x 2 3/4 HH capscrew	2	68	2	302-52	Grease zerk, 1/8 N.P.T.....	2
17	2	3296-42	Nut, nyloc 1/4 - 20.....	2	69	4	1-303514	Flange, thrust bearing.....	4
18	1	1-403186	Idler pulley	1	70	8	1-303314	Spacer, 10" caster.....	8
19	3	103-2555	Cutter Housing Complete	3	71	2	103-1236	Caster wheel assembly	2
20	3	1-633573	Guard, bottom.....	3	72	2	1-322145-01	Fork wldmnt, caster.....	2
21	3	32120-8	Retaining ring	3	73	2	103-2169	Spacer, front caster.....	2
22+	6	1-513016	Bearing	6	74	2	103-1224	Tire & Wheel Asm	2
23	3	1-323532	Cutter housing	3		2	1-513809	Roller bearing.....	2
24	1	702809	3/8-16 x 1 7/8 HH Capscrew.....	1		4	103-2170	Bushing	4
25+	3	1-323529	Cutter spindle tube	3	75	5	1-323417	Washer, belt cover mount.....	5
26	3	1-323528	Spacer	3	76	8	323-4	3/8-16 x 3/4 HH capscrew	8
27	18	3296-39	Nut, nyloc 3/8-16.....	18	77	2	325-20	1/2-13 x 6 HH capscrew	2
28	3	1-807267	Key, 1/4 x 3/16 x 1 1/4	3	78	2	3217-9	1/2-13 Hex nut.....	2
29+	3	1-403183	Pulley.....	3	79	2	3253-7	1/2 spring lockwasher	2
30	3	1-513208	5/8 Spring disc washer	3	80	2	1-513338	Washer, special	2
31	3	1-800861	5/8-18x8 HH Capscrew(Gr5)	3	81	2	1-809020	Quick pin, 10" caster	2
32	12	1-323539	Spacer, blade drive.....	12	82	2	1-303537	Stud, belt shield (short)	2
33	3	1-323339	Washer, retainer (sheave).....	3	83	3	1-303536	Stud, belt shield (long)	3
34	1	1-322230	Assist arm	1	84	5	1-323385	Knob, belt cover	5
35	3	3219-6	5/8-18 UNF hex nut	3	85	1	1-404237	Shield (1-402100-01) w/decals	1
36	1	1-303434	Engagement bushing.....	1	86	1	1-403188	Spacer, belt guide	1
37	1	1-303348	Eye bolt (left hand thread)	1	87	6	323-6	3/8-16 x 1 HH capscrew	6
38	1	1-303236	Turnbuckle body	1	88	1	1-323071	Spring 5sp/dr idler	1
39	1	1-303238	Eye bolt (right hand thread)	1	89	1	32120-35	E - ring	1
40	1	1-323747	Spring, compression	1	90	2	321-4	1/4-20 X 3/4 HH capscrew.....	2
41	2	1-806003	Cotter hairpin.....	2	91	1	1-323748	Ring, push-on 7/16.....	1
42	1	1-303352	Washer, spindle.....	1	92	3	103-1330	Guard,Bearing top.....	3
43	1	322-10	Screw, 5/16-18 X 2	1	93	1	3272-5	Cotter pin 3/32 x 1/2.....	1
44	2	1-323729	Powder metal bearing.....	2	94	1	3219-2	5/16-24 Hex nut.....	1
45	1	1-303334	Washer, Sprg Disc 5/16.....	1	95▲	1	103-2171	Kit,semi-pneumatic whl replacement.....	1
46	1	1-402109	Engagement arm w/bushings	1	96+	6	103-2477	Bearing.....	6
47	1	322-6	5/16-18 1 1/4 HH capscrew	1	97	3	103-2534	Spacer.....	3
48	1	302-19	Zerk 1/4-28 strt	1	98	3	103-2535	Spacer.....	3
49	2	3256-24	3/8 Flatwasher.....	2	99	3	103-2547	Cutter housing assembly.....	3

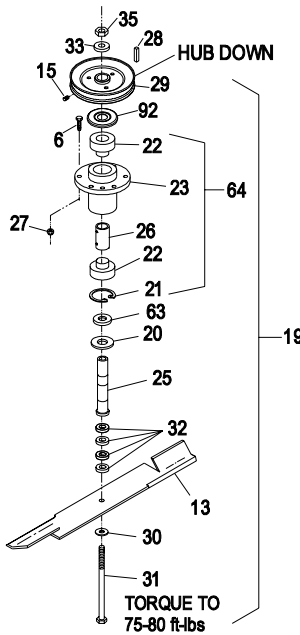
Exmark red touch up spray paint - P/N 1-850337

- ♦ Use Pro-lock Nut Type (p/n 1-840022 .5 ml tube) on the setscrews
- Requires installation of Micro-Mulch accessory for proper mulching. Mulch kit P/N's MK483
- ▲ Kit 103-2171 used to install semi-pneumatic casters on machines originally fitted with pneumatic casters. Includes 103-1224 & 103-2169. Order 2 per machine.
- ⊕ Apply Mobil HTS grease (or a food-grade antisieze) between the spindles & bearings and spindles & sheaves.
- * This assembly now serviced by 103-2547.

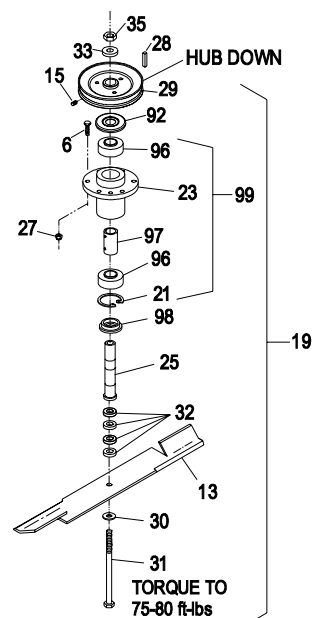
48" MOWER DECK



SERIAL NOS. 320,000 - 351,999



SERIAL NOS. 352,000 & HIGHER



ENGINE DECK GROUP

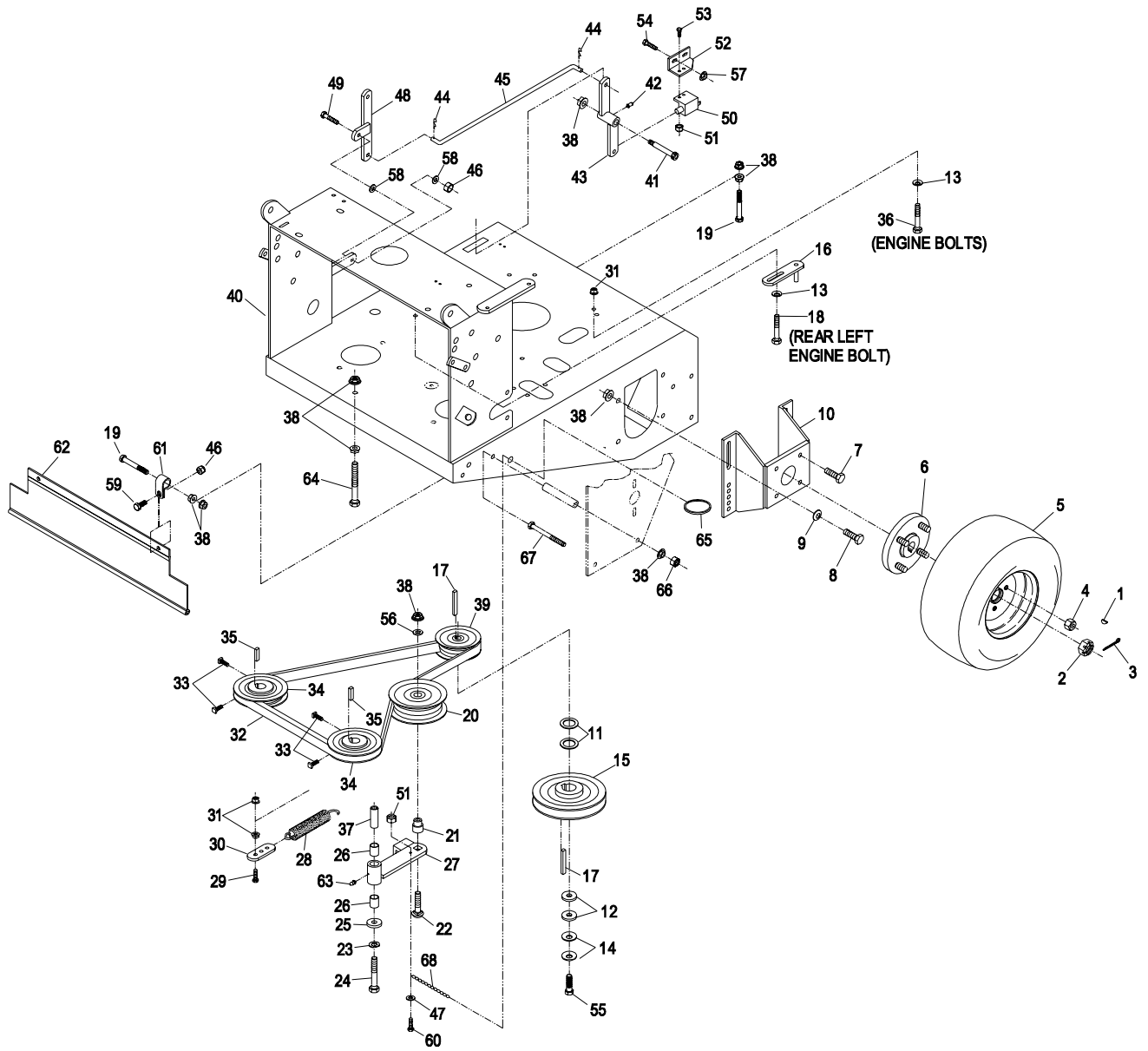
Ref. No.	Part No.	Description	Qty. Req'd.	Ref. No.	Part No.	Description	Qty. Req'd.
1	1-807019	Key, woodruff 1 x 1/4.....	2	30	1-603801	Anchor, spring.....	1
2	1-803040	Nut, slotted 3/4-16	2	31	32128-20	Nut, whizlock 5/16-18(Kaw)	6
3	1-806800	Pin, cotter 9/64 x 1-1/2	2		32128-20	Nut, whizlock 5/16-18(Koh).	2
4	242-50	Nut, wheel 1/2-20	8	32	1-653163	Belt, pump drive	1
5	1-413473	Tire & Wheel Assembly (36"&48")	2	33∇	1-803050	Setscrew, 5/16-18 x 3/4	4
	1-413474	Tire 16 x 6.50-8 (36"&48") .	1	34	1-413010	Sheave - pump.....	2
	1-603715	Wheel (36"&48")	1	35	1-807272	Key, 5mm sq. x 25mm	2
	103-2292	Tire & Wheel Assembly (32")	2	36	322-7	Screw, 5/16-18 x 1 1/2 (Kaw) .	3
	103-2305	Tire 16 x 4.80-8 (32")	1		33114-025	Screw, M8-1.25 x25mm (Koh)	3
	103-2306	Wheel (32")	1	37	1-603044	Bushing - Idler pivot	1
6	1-602997	Hub,tapered(4 bolt)w/stds	2	38	3290-357	Nut, whizlock 3/8-16	19
	1-633926	Stud, wheel 1/2-20	8	39◆	1-653035	Pulley, pump drive.....	1
7	3234-12	Screw, whizlock 3/8-16x3/4	8	40	103-2908-01	Deck, engine wldmt	1
8	323-6	Screw, 3/8-16 x 1.....	8	41	1-809062	Bolt, .500 x 1.75(shoulder)	1
9	98-5975	Washer, 3/8 spring disc....	8	42	302-40	Zerk	1
10	103-2289-01	Mount, motor (32")	2	43	1-322108	Bellcrank assy. w/zerk	1
	1-322162-01	Mount, motor (36")	2		1-322086-01	Bellcrank weldmt.....	1
	1-402062-01	Mount, motor (48")	2	44	1-806003	Hairpin.....	2
11	1-523157	Washer, spacer	2	45	1-323172	Linkage, blade engmnt.	1
12	1-373034	Washer, swivel	2	46	3296-29	Nut, nyloc 5/16-18	3
13	1-303334	Washer, 5/16 spring disc..	4	47	3256-14	Washer, #10.....	1
14	1-603610	Washer, 7/16 spring disc..	2	48	1-322090-01	Bellcrank	1
15◆	103-1667	Sheave, blade drive 7.33 OD (32" & 48").....	1	49	322-6	Screw, 5/16-18 x 1 1/4	1
◆	103-1668	Sheave, blade drive 6.71 OD (36")	1	50	1-513051	Switch, blade engagement	1
16	1-322110	Guide,Belt.....	1	51	3296-2	Nut nyloc 10-24	3
17	1-807259	Key, 1/4 sq. x 1.....	2	52	1-323213	Bracket, switch.....	1
18	322-9	Screw, 5/16-18 x 1 3/4 (Kaw)	1	53	3290-500	Screw, 10-24 x 5/8	2
	33114-030	Screw, M8-1.25 x 30mm (Koh) ..	1	54	321-3	Screw, 1/4-20 x 5/8	2
19	323-13	Screw, 3/8-16 x 2 3/4.....	3	55∇	3212-6	Screw, 7/16-20 x 1 1/2	1
20	1-603843	Idler, pulley	1	56	3256-24	Washer, 3/8 (SAE)	1
21	1-603496	Bushing, idler.....	1	57	32128-33	Nut, whizlock 1/4-20.....	2
22	3231-29	Screw, 3/8-16x1-3/4 Carr.	1	58	3256-23	Washer, 5/16 SAE flat.....	2
23	3253-5	Lockwasher, 3/8	1	59	322-3	Screw, 5/16-18 x 3/4	2
24	323-12	Screw, 3/8-16 x 2-1/2	1	60	1-809069	Screw, 10-24x7/8HxSktHd	1
25	1-373034	Washer, swivel	1	61	1-413510	Clip, loom 1/2	2
26	1-513034	Bearing, pivot	2	62	103-2056	Shield, Trailing	1
27	1-602521	Arm, assy idler (w/brgs)....	1	63	302-19	Zerk, 1/4-28 STRT	1
	1-602458-01	Arm, assy idler (w/o brgs)	1	64	323-11	Screw, 3/8-16 x 2 1/4	1
28	1-603402	Spring, extension.....	1	65	1-323366	Split ring	1
29	322-5	Screw, 5/16-18 x 1.....	1	66	3296-39	Nut, 3/8-16 nyloc	1
				67	323-23	Screw, 3/8-16 x 4 1/2	1
				68	1-323365	Chain, twist link	1

Exmark red touch up spray paint - P/N 1-850337

◆ Use anti-seize compound on pulley bore.

∇ Use Pro-Lock (nut type, Part no. 1-840022, 5 ml tube) on setscrew threads and on sheave retaining bolt in engine crankshaft.

ENGINE DECK GROUP



ENGINE DECK GROUP (cont.)

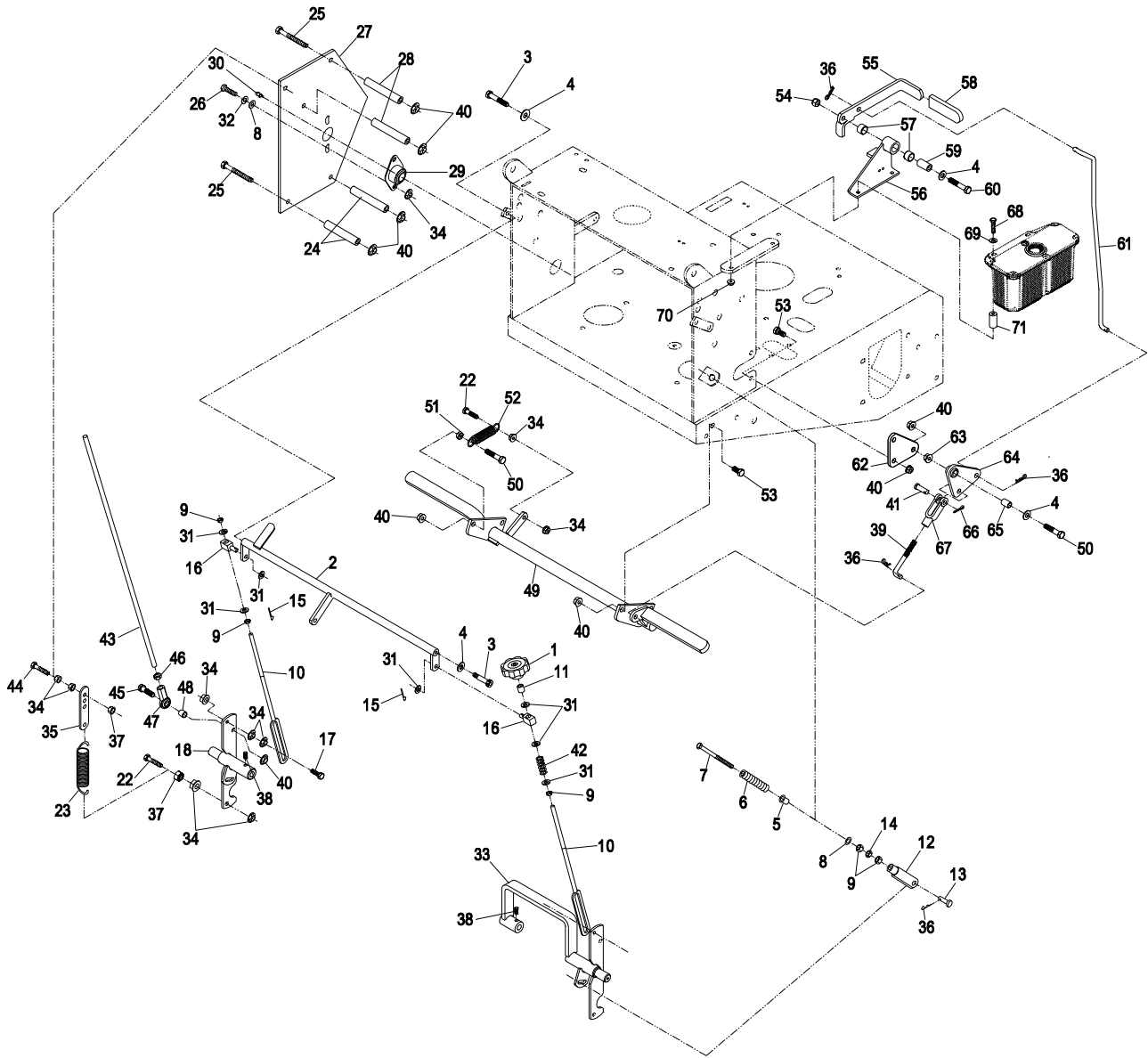
Ref. No.	Part No.	Description	Qty. Req'd.	Ref. No.	Part No.	Description	Qty. Req'd.
1	1-413151	Knob, tracking.....	1	38*	1-803022	Setscrew, 5/16-18 x 5/8	2
2	1-412203-01	Crank weldmt	1	39	1-413489	Linkage, lower brake.....	1
3*	1-809056	Bolt, .375 x .375 (shoulder)	2	40	3290-357	Nut, whizlock 3/8-16.....	16
4	3256-24	Washer, 3/8 SAE flat	4	41	1-808285	Pin, clevis 3/8 x 1 1/8	1
5	1-603735	Bushing, nylon flanged	2	42	1-323245	Spring.....	1
6	103-0265	Spring, neutral return.....	2	43	103-1734	Linkage, drive.....	2
7	1-603737	Bolt, neutral return.....	2	44	1-800016	Tapbolt, 5/16-18 x 1 1/4	2
8	3256-2	Washer, 1/4(std).....	6	45	323-8	Screw, 3/8-16 x 1 1/2	2
9	3219-2	Nut, 5/16-24.....	7	46	3220-16	Nut, jam 3/8-24 LH.....	2
10	1-413350	Rod, control arm	2	47	103-1167	Joint, .375 LH ball end	2
11	1-603903	Spacer	1	48	103-1166	Tube, pump link spacer	2
12	1-303105	Yoke, adjustable	2	49	103-2299-03	Brake wldmt, 32".....	1
13	1-808280	Pin, clevis 5/16-1	2		103-2085-03	Brake wldmt, 36".....	1
14	3220-2	Nut, jam 5/16-24.....	2		103-2004-03	Brake wldmt, 48".....	1
15	3272-5	Pin, cotter 3/32 x 1/2.....	2	50	323-9	Screw, 3/8-16 x 1 3/4.....	2
16	1-603676	Swivel	2	51	3218-3	Nut, jam 3/8-16	1
17	1-403180	Screw, 5/16-18x1 3/8 special	2	52	1-323161	Spring.....	1
18	103-1190-01	Arm weldmt, LH	1	53	323-4	Screw, 3/8-16 x 3/4.....	5
19	103-1964	Hose, 24" oil drain	1	54	3296-39	Nut, 3/8-16 nyloc.....	1
20∇	103-1965	Valve, oil drain	1	55	1-412501-03	Park brake lever wldmt	1
21	103-1966	Adapter, M20-2.5 / 3/8 NPT (Kaw)	1	56	1-414504	Wldmt, bracket w/ bushings	1
22	322-6	Screw, 5/16-18 x 1-1/4.....	3	57	1-413347	Sleeve, bushing	2
23	1-603693	Spring, extension.....	2	58	1-303020	Grip, lever	1
24	1-323197-01	Spacer, short.....	4	59	1-413344	Bushing, pivot	1
25	323-16	Screw, 3/8-16 x 4.....	7	60	323-10	Screw, 3/8-16 x 2.....	1
26	322-3	5/16-18 x 3/4	4	61	1-413496	Linkage, upper brake	1
27	1-413201-01	Shield, hydro control.....	2	62	1-413497	Bracket, bellcrank	1
28	1-323195-01	Spacer, long	4	63	32128-21	Nut, hex flange lock 3/8-16	1
29	1-633102	Bearing, flange	2	64	1-414508	Bellcrank, w/ bushings	1
30	302-19	Zerk, 1/4-28	2	65	1-303548	Bushing, plastic.....	1
31	3256-23	Washer, 5/16 (SAE)	7	66	3272-10	Pin, cotter 1/8 x 3/4.....	1
32	1-805005	Lockwasher, 5/16 (heavy)	4	67	1-633131	Yoke, brake linkage	1
33	103-1191-01	Arm weldmt, RH	1	68	321-15	Screw,HHC 1/4-20 x 1	2
34	32128-20	Nut, whizlock 5/16	20	69	3256-22	Washer,SAE 1/4	2
35	1-613089	Anchor, spring	2	70	32128-33	Nut,whizlock 1/4-20.....	2
36	1-806003	Hairpin	5	71	103-2191	Spacer,hydraulic tank	2
37	3296-29	Nut, nyloc 5/16-18.....	4				

Exmark red touch up spray paint - PN 1-850337

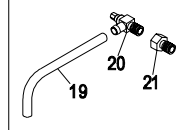
* Use Pro-Lock nut type, Part No. 1-840022 (.5 ml tube) on shoulder bolts & setscrew threads.

∇ Use a Teflon Pipe Sealant or equivalent on pipe threads.

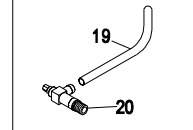
ENGINE DECK GROUP (cont.)



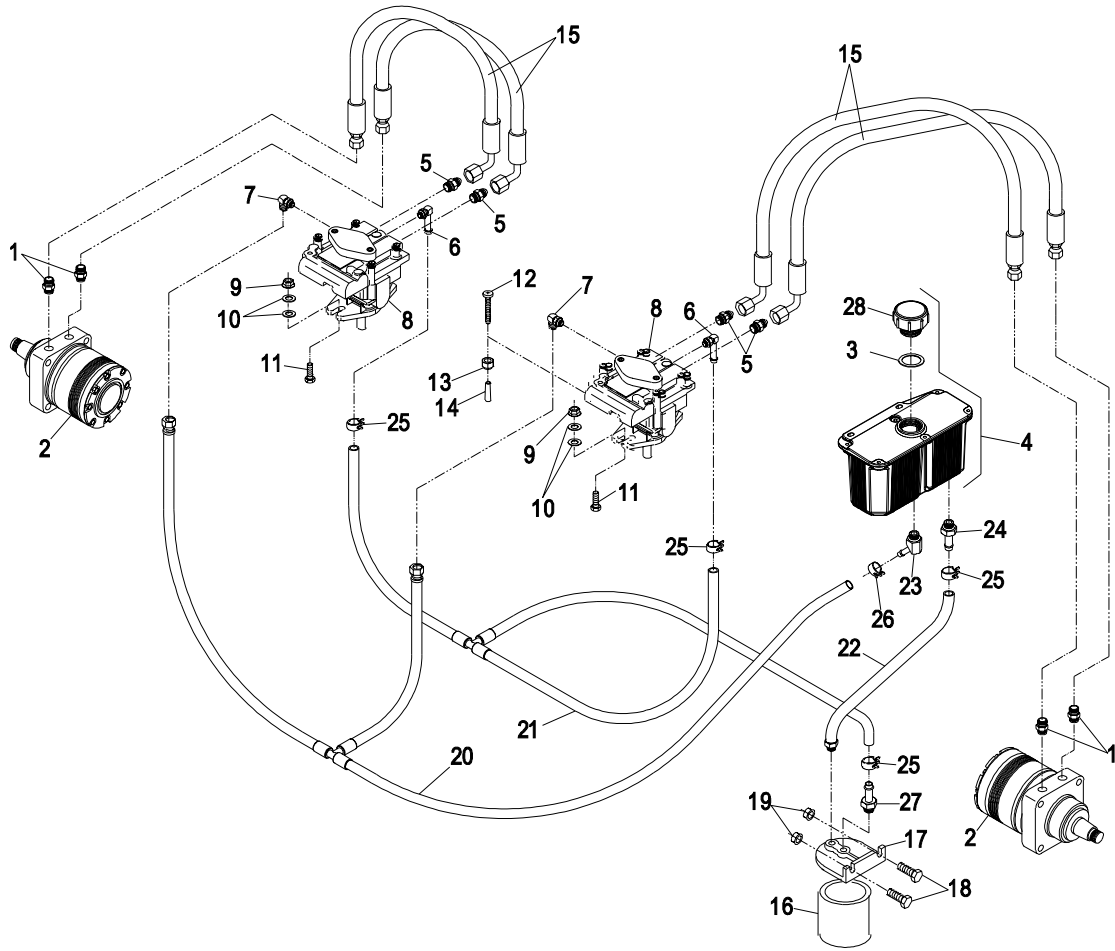
OIL DRAIN - KAWASAKI



OIL DRAIN - KOHLER



HYDRAULIC GROUP



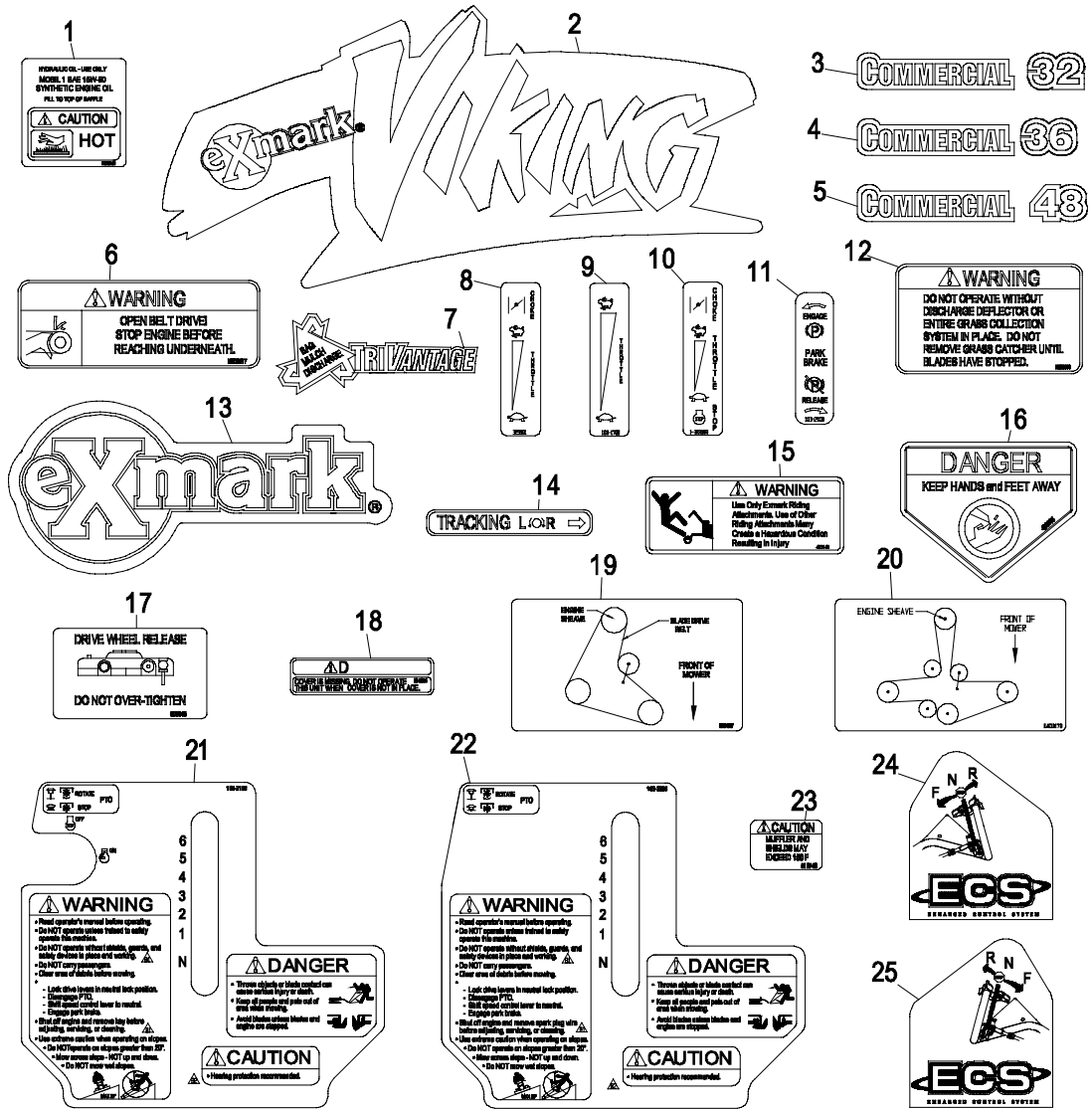
Ref. No.	Part No.	Description	Qty. Req'd.	Ref. No.	Part No.	Description	Qty. Req'd.
1	1-603991	Fitting, straight connector...	4	12	1-801063	Screw, 1/4-20x2 pan head.	2
	1-603919	Boss O-Ring.....	1	13	3296-42	Nut, nylock 1/4-20.....	2
	1-603992	Flare O-Ring.....	1	14	1-613073	Grip, dump valve.....	2
2	1-603718	Wheel motor.....	2	15	1-403102	Hose, high pressure.....	4
	1-000138	Kit, Bearing.....	1	16	1-513211	Element, oil filter.....	1
	1-000119	Kit, seal.....	1	∇	1-523541	Element, oil filter(winter)	1
3	103-1949	Gasket, reservoir cap.....	1	17*	1-603720	Head, filter.....	1
4	103-1947	Reservoir, hydraulic fluid....	1	18	322-5	Screw, 5/16-18 x 1.....	2
5	1-603990	Adapter, straight thread.....	4	19	32128-20	Nut, whizlock 5/16-18.....	2
	1-603920	Boss O-Ring.....	1	20	103-2073	Asm, case drain hose.....	1
	1-603992	Flare O-Ring.....	1	21	103-2057	Asm, charge hose.....	1
6	1-603989	Elbow, 90°.....	2	22	103-1805	Asm, charge hose.....	1
	1-603923	O-Ring.....	1	23	103-2112	Elbow, 45°.....	1
7	1-513840	Elbow - 90°.....	2		1-603921	O-Ring.....	1
	1-603921	O-Ring.....	1	24	103-1912	Adapter, straight.....	1
8	1-613042	Pump, hydro.....	2		1-603921	O-Ring.....	1
	2513018	Kit, seal overhaul.....	1	25	103-1988	Clamp, hose (11/16).....	4
9	3290-357	Nut, whizlock 3/8-16.....	4	26	103-1716	Clamp, hose (17/32).....	1
10	3256-3	Washer, 5/16 std.....	8	27	103-1804	Adapter, straight.....	1
11	323-7	Screw, 3/8-16 x 1-1/4.....	4	28	103-1948	Cap, hydraulic reservoir.....	1

Emark black touch up spray paint - gloss black

* Use Teflon Pipe Sealant or equivalent on filter head fittings.

∇ Use only for operation below 32°F(0°C)

DECAL GROUP



Ref. No.	Part No.	Description	Qty. Req'd.	Ref. No.	Part No.	Description	Qty. Req'd.
1	1-523552	Decal, Hydraulic Tank	1	15	1-403143	Decal, Sulky Warning	1
2	1-323319	Decal, Large Vik Hydro	1	16	1-403005	Decal, Danger (32"&36")	1
3	1-323410	Decal, Commercial "32"	1	1-403005	Decal, Danger (48")	2	
4	1-323411	Decal, Commercial "36"	1	17	1-603845	Decal, Drive Wheel Release.	1
5	1-403131	Decal, Commercial "48"	1	18	98-5954	Decal, Missing Cover	1
6	1-303517	Decal, Belt Drive	1	19	1-323427	Decal, Belt routing (32"&36")	1
7	1-303520	Decal, TriVantage	1	20	1-403170	Decal, Belt routing (48")	1
8●	1-323691	Decal, Throttle/Choke (Kaw).	1	21	103-2196	Decal, Console (Kaw)	1
9∇	103-1798	Decal, Throttle (Kaw)	1	22	103-2295	Decal, Console (Koh)	1
10	1-323689	Decal, Throttle/Choke (Koh)..	1	23	1-513746	Decal, Muffler	1
11	103-2103	Decal, Park Brake	1	24	103-2242	Decal, LH ECS Instruction	1
12	1-303508	Decal, Discharge Warning	1	25	103-2243	Decal, RH ECS Instruction ...	1
13	103-1983	Decal, Exmark Logo	1		103-2588	Decal Kit, Viking Hydro	
14	1-413214	Decal, Tracking	1				

- For 15 HP Kaw units with combined throttle/choke control – Engine Code FH451V - AS04
- ∇ For 15 HP Kaw units with separate choke control – Engine Code FH451V - BS04

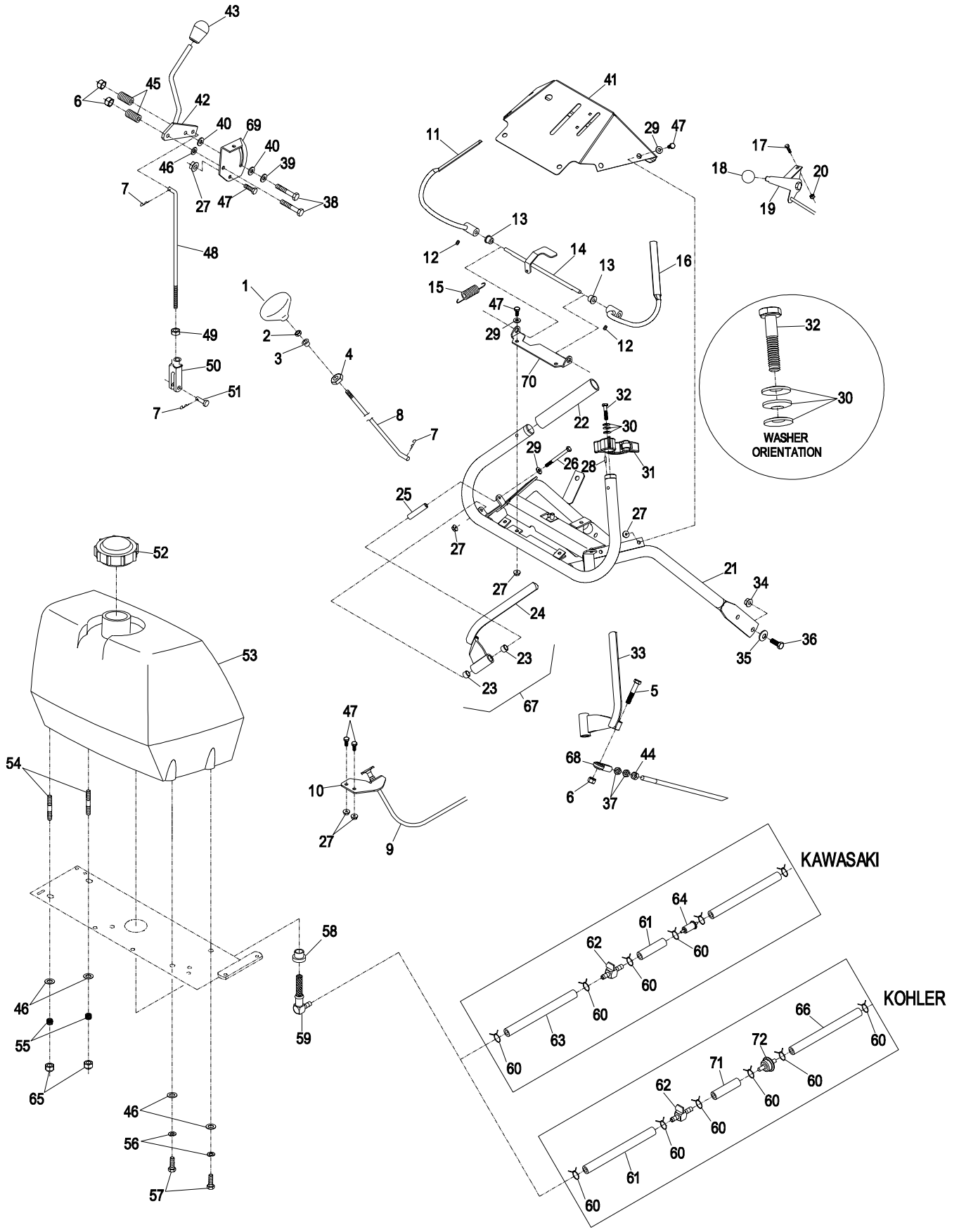
ECS UPPER HANDLE and CONTROLS

Ref. No.	Part No.	Description	Qty. Req'd.	Ref. No.	Part No.	Description	Qty. Req'd.
1	1-323134	Knob, (push/pull)	1	38	322-10	Screw, 5/16-18 x 2	2
2	3218-2	Nut, jam 5/16-18..	1	39	1-603716	Washer, friction disc.....	1
3	1-323143	Bushing, nylon .38 I.D.	1	40	1-323244	Washer, friction	2
4	1-323142	Push Nut (.50 shaft)	1	41	103-0546-03	Wld,upper handle console .	1
5	322-9	Screw, 5/16-18 x 1 3/4	2	●	103-2910	Asm,console w/decals.....	1
6	3296-29	Nut, 5/16-18 nylock	4	▲	103-2911	Asm,console w/decals.....	1
7	1-806003	Hairpin cotter	3	*	103-2912	Asm,console w/decals.....	1
8	103-2193	Link, blade engagement.....	1	42	103-0773	Speed shift weldmt	1
9*	103-1796	Cable, choke (Kaw)	1	43	103-0423	Knob .38-16 nyloc	1
10*	103-1797-01	Bracket, choke cable (Kaw)	1	44	3219-3	Nut,reg hex 3/8-24	2
11∇	103-1566-03	Lever weldmt opc LH	1	45	1-323245	Spring, compression	2
12◆	1-803322	Setscrew, 5/16-24 x 5/16....	2	46	3256-23	Washer 5/16 SAE flat.....	5
13	1-303365	Bushing, nylon	2	47●	321-3	Screw, 1/4-20 x 5/8 (Kaw)..	10
14	103-0769-03	Lever axle weldmt, opc	1	*	321-3	Screw, 1/4-20 x 5/8 (Kaw)..	12
15	1-303363	Spring, opc extension.....	1		321-3	Screw, 1/4-20 x 5/8 (Koh) ..	10
16∇	103-1567-03	Lever weldmt, opc RH.....	1	48	1-323522	Rod, speed control	1
17	1-807513	Bolt, #10-24 x 1/2 carriage .	2	49	3220-2	Nut, 5/16-24 jam.....	1
18	1-513592	Knob, red throttle.....	1	50	1-303105	Yoke	1
19●	1-413428	Cable, throttle/choke (Kaw)..	1	51	1-808280	Clevis pin 5/16 x 1	1
*	1-633696	Cable, throttle (Kaw).....	1	52	1-513508	Cap, fuel.....	1
	1-323322	Cable, throttle/choke (Koh) ..	1	53	1-413179	Tank, fuel	1
20	3296-2	Nut, #10-24 nylock	2	54∇	1-633023	Stud, fuel tank	2
21	103-2194-03	Handle wld, upper ECS	1	55	1-633349	Spring, fuel tank	2
22	103-0815	Grip, handle bar.....	2	56	1-805005	Washer, 5/16 hvy lock.....	2
23	1-413152	Bearing	4	57	322-3	Screw, 5/16-18 x 3/4.....	2
24	103-2466-03	Lever, drive LH.....	1	58	1-513645	Bushing, fuel valve	1
25	103-0027	Bushing, drive lever	2	59	1-543277	Elbow, fuel tank.....	1
26	321-14	Screw,1/4-20 x 2 3/4	2	60	1-303077	Clamp, fuel line (Kaw)	4
27●	32128-33	Nut, 1/4-20 whizlock (Kaw). 12			1-303077	Clamp, fuel line (Koh).....	6
*	32128-33	Nut, 1/4-20 whizlock (Kaw). 14		61	1-603955	Hose, fuel line 6"	1
	32128-33	Nut, 1/4-20 whizlock (Koh) . 12		62	1-603770	Valve, fuel.....	1
28	103-0464	Pin,1/8 x 1/2 spring.....	2	63	1-303022	Hose, fuel line 8.5"	1
29	3256-22	Washer 1/4 SAE flat.....	10	64	Kawasaki PN 41019-1055	filter w/6" fuel line...1	
30	1-303435	Washer, 1/4 disc spring	6	65	3296-47	Nut, nyloc thin 5/16-18	2
31	103-1371	Thumb latch asm RH(shown)	1	66	1-603954	Hose, fuel line 13.75"	1
	103-1372	Thumb latch asm LH.....	1	67	103-2513	Asm, Drive Lever RH	1
32◆	103-0235	Screw, 1/4-20 x 1-1/8 w/nylon	2		103-2514	Asm, Drive Lever LH	1
33	103-2465-03	Lever,drive RH	1	68	103-2463	Joint,.31 ball end	2
34	3290-357	Nut, 3/8-16 whizlock	4	69	103-0503	Bracket,shifter slide	1
35	98-5975	Washer, 3/8 disc spring	4	70	103-0489-03	Bracket,opc axle	1
36	323-6	Screw, 3/8-16 x 1	4	71	1-603776	Hose, fuel line 2.5"	1
37	3220-3	Nut, jam 3/8-24.....	4	72	1-303197	Filter, fuel	1

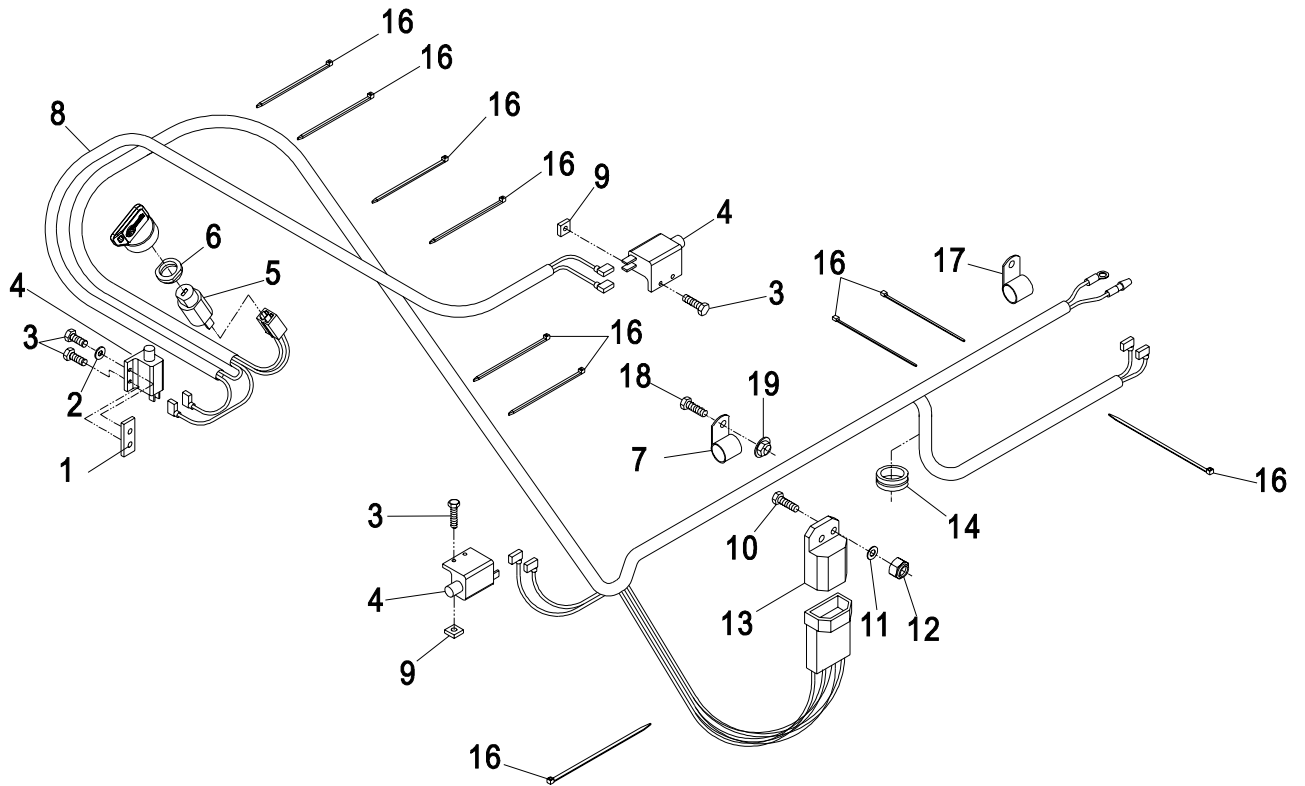
Exmark black touch up spray paint - Gloss black

- ◆ Use Pro-Lock nut type, Part no. 1-840022 (.5cc tube) on setscrew threads and on thumb latch screws.
- ∇ Use Pro-Lock retaining type, Part no. 1-840023 (.5cc tube) on inside of bore of OPC hub and on fuel tank studs.
- For 15 HP Kawasaki units with combined throttle/choke control – Engine Code FH451V – AS04
(36" units – S/N 320,000-345,495; 48" units – S/N 320,000-346,716)
- * For 15 HP Kawasaki units with separate choke control – Engine Code FH451V – BS04
(36" units – S/N 345,496 & higher; 48" units – S/N 346,717 & higher)
- ▲ For 15 HP Kohler units.

ECS UPPER HANDLE and CONTROLS



ELECTRICAL GROUP

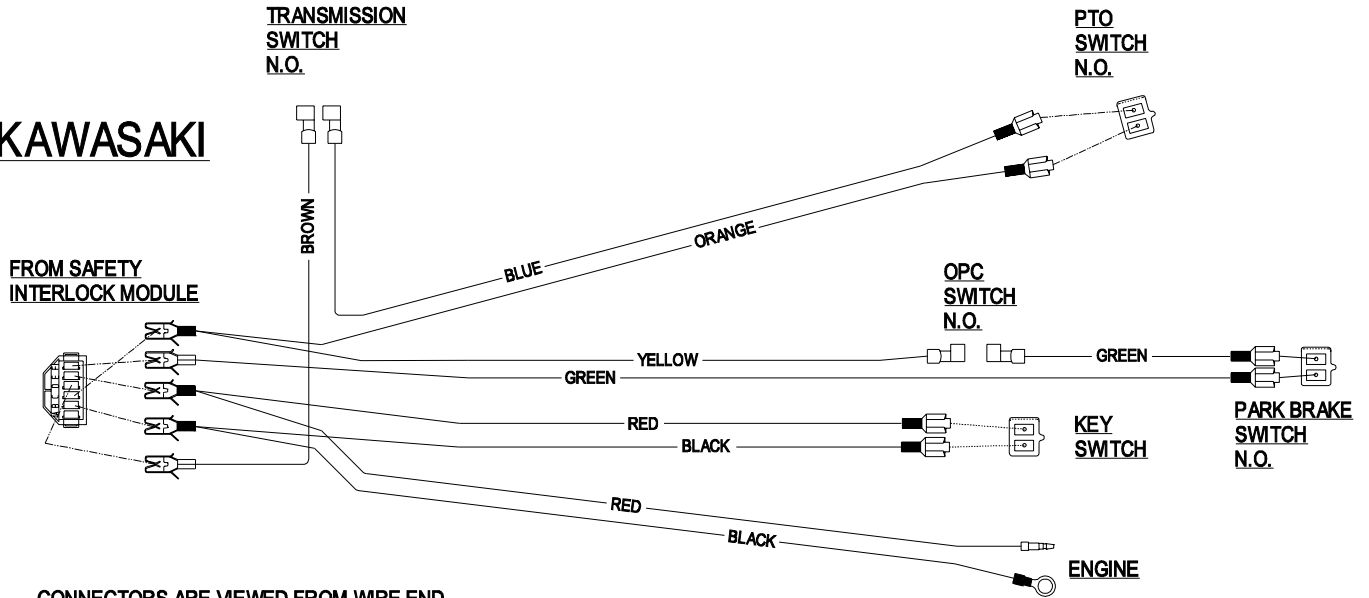


Ref. No.	Part No.	Description	Qty. Req'd.	Ref. No.	Part No.	Description	Qty. Req'd.
1	1-633181	Plate, tapped	1	9	1-804002	Nut, square 10-24	4
2	3256-14	Washer, flat #10	1	10	321-4	Screw, 1/4-20 x 3/4	1
3	3290-500	Screw, #10-24 x 5/8	6	11	3256-22	Washer, 1/4 SAE flat	1
4	1-513051	Switch, N.O.	3	12	3296-42	Nut, nyloc 1/4-20	1
5	1-403121	Switch, on/off w/ keys (Kaw)	1	13	1-323430	Module, interlock.	1
	1-603511	Key, on/off (Kaw)	1	14	1-543296	Grommet	1
	103-2106	Key, Exmark logo (Kaw)	1	16	1-303287	Tie, plastic (small)	10
6	103-0498	Nut, ignition switch (Kaw) ...	1	17	1-323229	Clip, loom .38 (Kaw)	1
7	1-603727	Clip, loom .56	1	18	321-3	Screw, 1/4-20 x 5/8	1
8*	103-2007	Harness, wire (Kaw)	1	19	32128-33	Nut, whizlock 1/4-20	1
*	103-2286	Harness, wire (Koh)	1				

* Use dielectric grease on all wiring harness connectors.

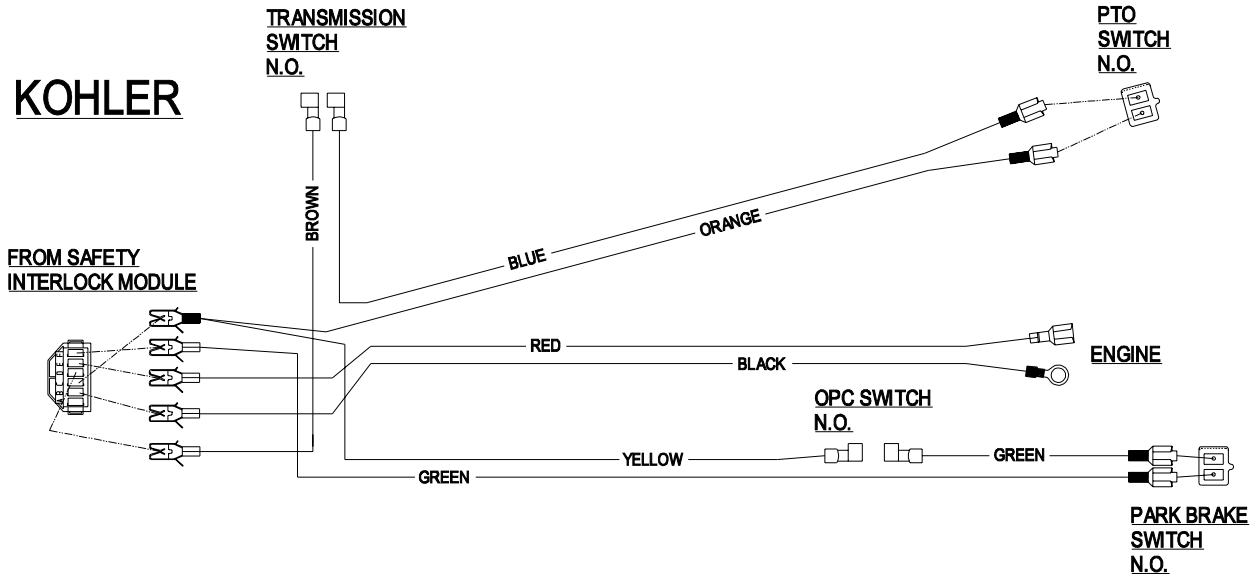
WIRING DIAGRAMS

KAWASAKI



CONNECTORS ARE VIEWED FROM WIRE END
 N.C. = NORMALLY CLOSED
 N.O. = NORMALLY OPEN

KOHLER



CONNECTORS ARE VIEWED FROM WIRE END
 N.C. = NORMALLY CLOSED
 N.O. = NORMALLY OPEN

NOTES

**SEE EXMARK'S COMPLETE
LINE OF PRODUCTS FOR TURF CARE**

LAZER Z[®]

LAZER Z[®] HP

LAZER Z[®] XP

TURF RANGER[®]

TURF TRACER[®]

TURF TRACER[®] HP

VIKING HYDRO

METRO[®]

METRO[®] HP

SELF STEERING SULKY

ULTRA VAC[™]

GRASS CATCHER

MICRO-MULCH[™] ACCESSORY

©1997,1998,1999, 2000, 2001
EXMARK MFG. CO. INC.
INDUSTRIAL PARK BOX 808
BEATRICE, NE 68310
ALL RIGHTS RESERVED

PART NO. 103-1745 Rev C.
(402) 223-6300
FAX (402) 223-5489

PRINTED IN U.S.A.

