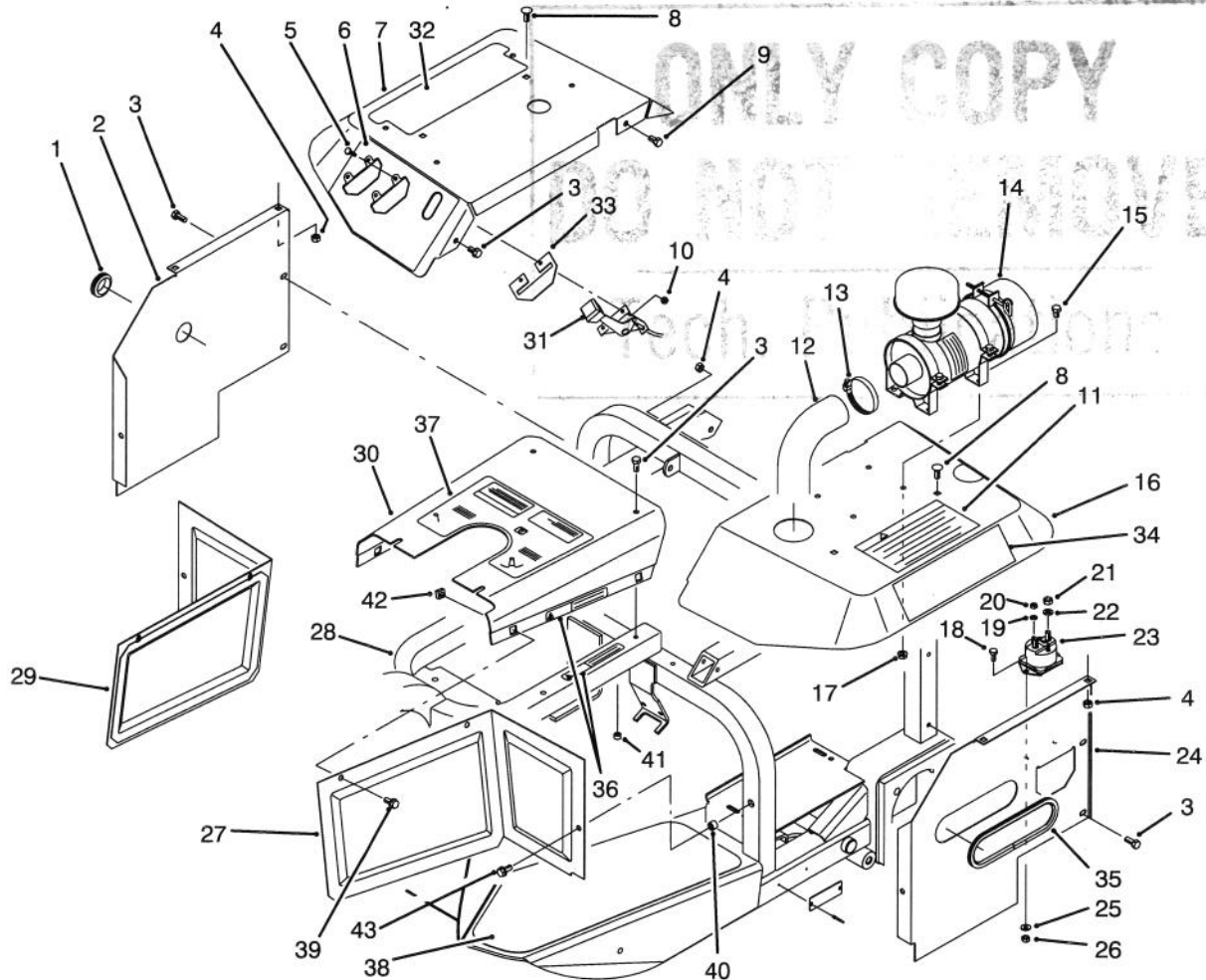


**TORO**<sup>®</sup>

MODEL NO. 08881-40001 &amp; UP

**PARTS  
CATALOG****SAND PRO<sup>®</sup> 5000**

T-1472A

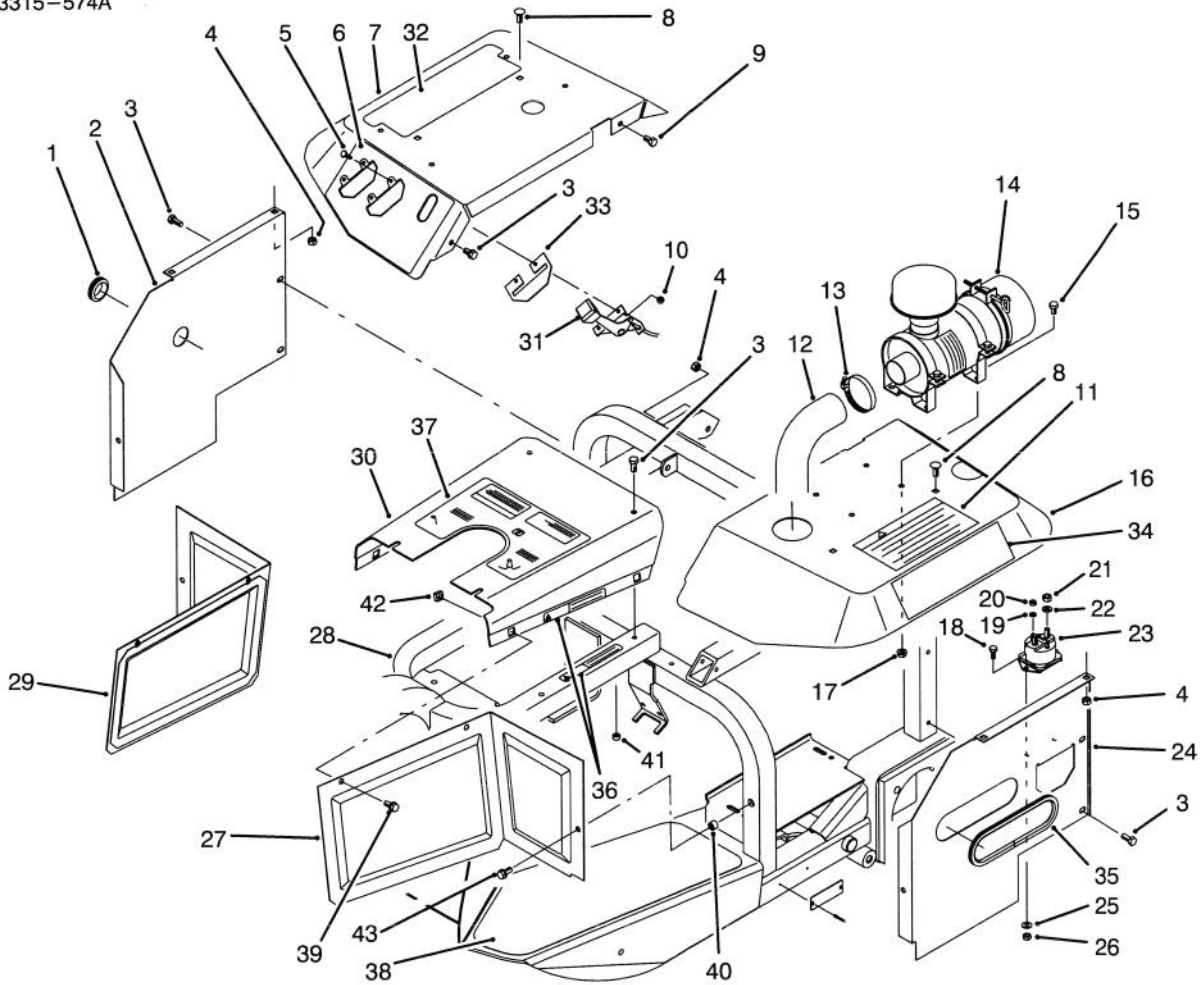
**BODY ASSEMBLY**

Ref. No.	Part No.	Description	No. Used
1	240-3	Grommet	1
2	85-9050	Panel - R.H. Rear	1
3	32144-11	Screw - Cap Hex. Hd.	8
4	3296-29	Nut - Lock	6
5	32105-13	Screw - Cap Hex. Hd.	4
‡6	85-8820	Decal - Control (English)	1
7	85-9530	Fender - R.H.	1
8	3230-18	Bolt - Carriage	4
9	322-2	Screw - Cap Hex. Hd.	2
10	3296-2	Nut - Lock	4
‡11	85-8840	Decal - Warning (English)	1
12	85-9500	Hose - Air Cleaner	1
13	2412-92	Clamp - Hose	1
14	46-6890	Air Cleaner Assembly	1

Ref. No.	Part No.	Description	No. Used
15	322-1	Screw - Cap Hex. Hd.	4
16	14-7509	Fender Assembly L.H. (Incl. Ref. #11)	1
17	32128-20	Nut - Flange Lock	4
18	321-3	Screw - Cap Hex. Hd.	2
19	3254-1	Washer - Lock	2
20	3219-14	Nut - Hex.	2
21	3218-13	Nut - Hex.	2
22	3254-2	Washer - Lock	2
23	28-4210	Solenoid - Starter	1
24	85-9040	Panel - Rear L.H.	1
25	3256-22	Washer - Flat	2
26	3296-8	Nut - Lock	2
27	85-9680	Panel - Front L.H.	1
28	85-7600	Frame Assembly (Incl. Ref. #41)	1

‡For different language versions of this part, see International Decal Cross Reference.

TPS



T-1472A

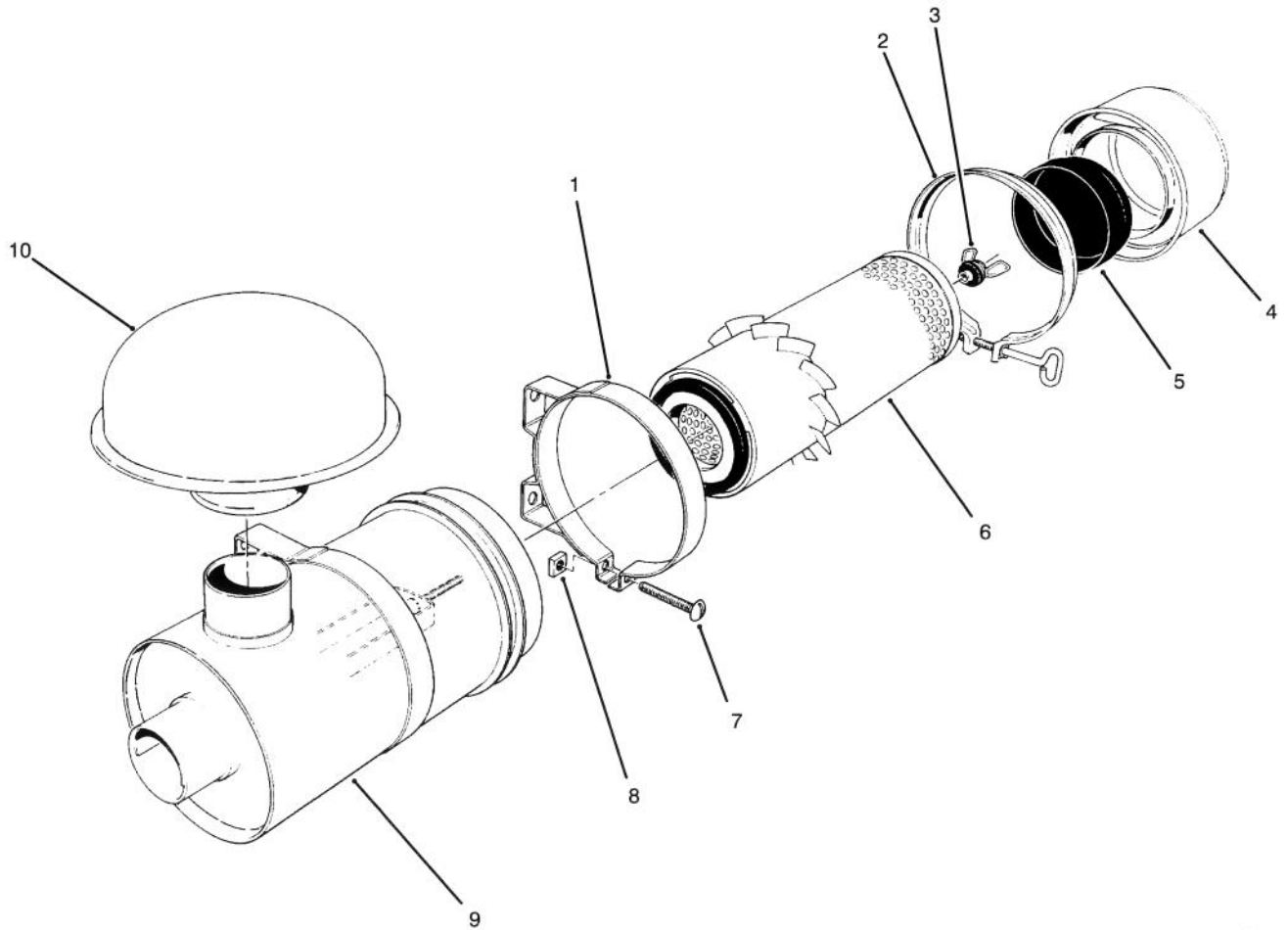
### BODY ASSEMBLY (Continued)

Ref. No.	Part No.	Description	No. Used
29	85-8490	Panel - Front R.H.	1
30	88-8130	Top Panel Assembly (Incl. Ref. #36, 37 & 40)	1
31	85-9310	Control - Throttle & Choke	2
32	80-2150	Pad - Litterbox	1
33	85-9190	Plate - Control	1
34	85-8800	Decal - Sand Pro 5000	2
*	88-8490	Decal - Infield Pro 5000	2
35	88-8340	Trim - Panel	1
‡36	85-8880	Decal - Shield Missing (English)	3

Ref. No.	Part No.	Description	No. Used
‡37	85-8810	Decal - Operating (English)	1
38	85-8790	Tread - Floor L.H.	1
*	85-8780	Tread - Floor R.H.	1
39	3234-7	Screw - Hex. Flange Hd.	4
40	32148-8	Nut - Clinch	2
41	32148-11	Nut - Clinch	3
42	3290-496	Nut - Retaining	4
43	3234-29	Screw - Hex. Flange Hd.	2

\*Not Illustrated

‡For different language versions of this part, see International Decal Cross Reference.

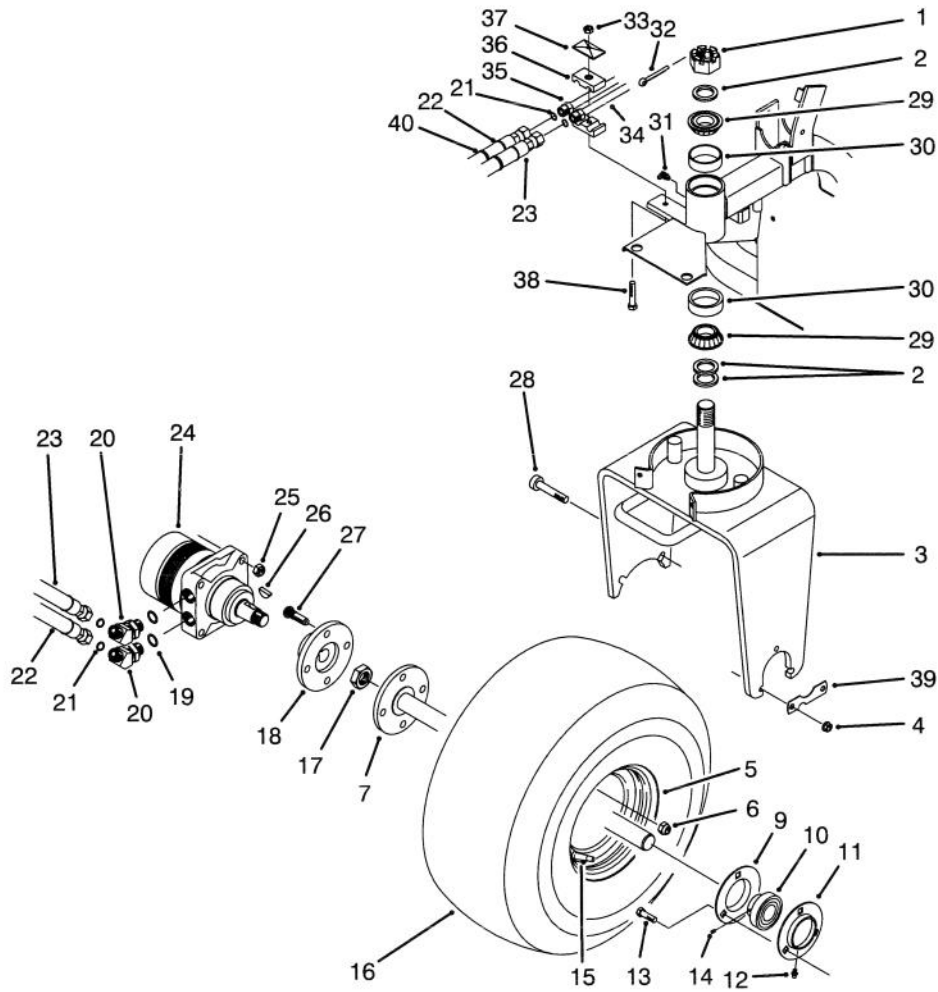


T-0248

### AIR CLEANER ASSEMBLY NO. 46-6890

Ref. No.	Part No.	Description	No. Used
1	33-1350	Band Assembly (Incl. Ref. #7 & 8)	2
2	33-1340	Clamp Assembly	1
3	33-1330	Nut Assembly	1
4	33-1320	Cup	1
5	33-1310	Baffle	1

Ref. No.	Part No.	Description	No. Used
6	33-1300	Element Assembly	1
7	3258-19	Screw - Round Hd.	2
8	32107-11	Nut - Square	2
9		Body Assembly	1
10	46-7510	Hood - Intake	1

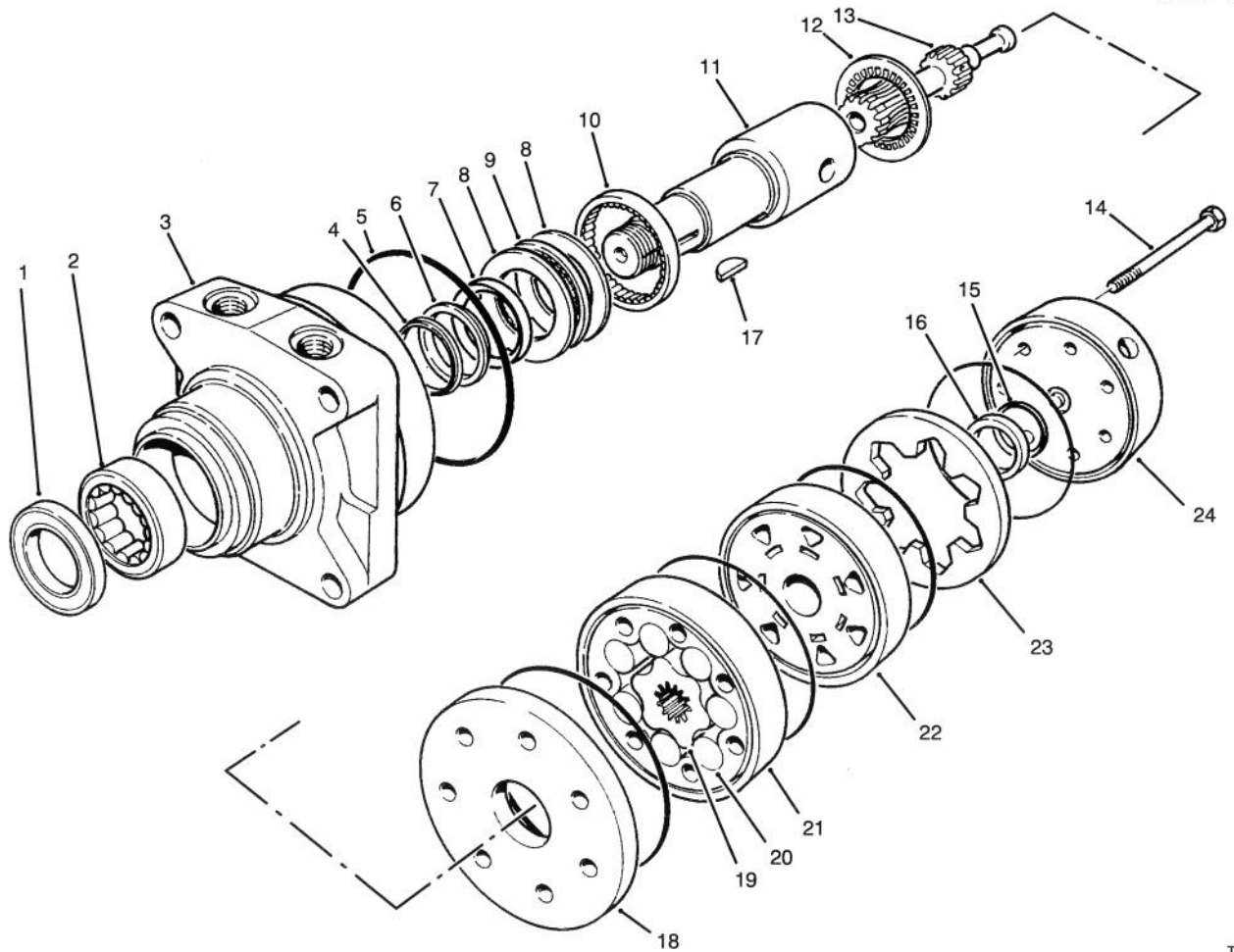


T-1468

## FRONT WHEEL ASSEMBLY

Ref. No.	Part No.	Description	No. Used
1	32136-9	Nut - Slotted	1
2	18-6320	Washer	3
3	85-8060	Fork - Steering	1
4	3296-39	Nut - Lock	3
5	46-4810	Rim	1
6	242-50	Nut - Lug	4
7	18-6290	Shaft - Axle	1
9	85-8950	Flange - Bearing	1
10	251-352	Bearing Assembly (Incl. Ref. #14)	1
11	85-8940	Flange - Bearing Lube (Incl. Ref. #12)	1
12	302-5	Fitting - Grease	1
13	323-29	Screw - Cap Hex. Hd.	3
14	251-352	Screw - Set	2
15	232-35	Valve - Stem	1
16	85-8290	Tire	1
17	26-3790	Nut - Lock	1
18	17-4710	Hub	1
19	237-80	Seal - O-Ring	2
20	340-89	Fitting - Hydraulic 45° (Incl. Ref. #19 & 21)	2

Ref. No.	Part No.	Description	No. Used
21	237-30	Seal - O-Ring	4
22	85-9640	Hose - Hydraulic	1
23	85-9630	Hose - Hydraulic	1
24	75-9830	Hydraulic Motor Assembly	1
25	3296-23	Nut - Lock	2
26	3257-42	Key - Woodruff	1
27	10-6830	Stud - Drive	4
28	3274-93	Screw - Hex. Socket Hd.	2
29	254-70	Cone - Bearing	2
30	254-61	Cup - Bearing	2
31	302-60	Fitting - Grease	1
32	3272-37	Pin - Cotter	1
33	3296-8	Nut - Lock	1
34	85-9360	Tube - Hydraulic (Incl. Ref. #21)	1
35	85-9370	Tube - Hydraulic (Incl. Ref. #21)	1
36	56-7976	Clamp - Tube	1
37	69-9760	Plate - Cover	1
38	321-10	Screw - Cap Hex. Hd.	1
39	88-8350	Tab - Bearing	1
40	3290-378	Tie - Cable	2



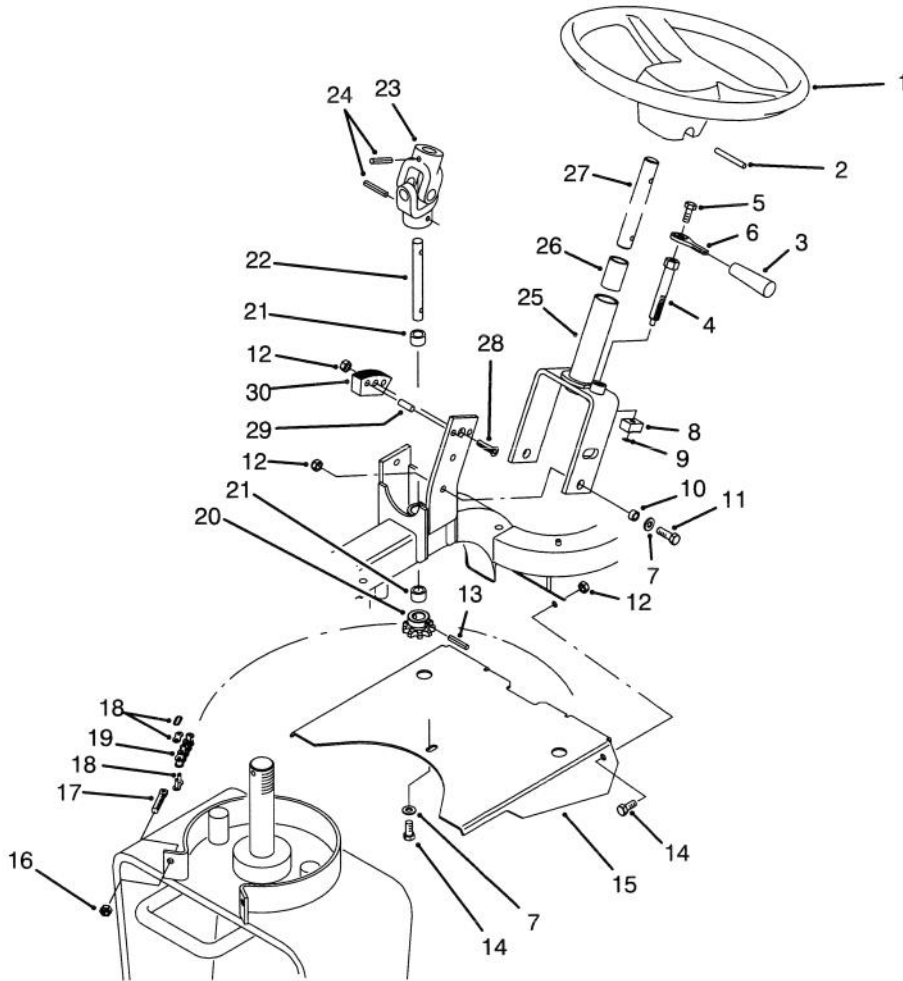
T-0983

## FRONT HYDRAULIC DRIVE MOTOR NO. 75-9830

Ref. No.	Part No.	Description	No. Used
1		Seal - Dirt & Water	1
2		Bearing	1
3		Housing	1
4		Washer - Backup	1
5		Seal - Rings	5
6		Washer - Backup	1
7		Seal - Inner	1
8		Washer - Thrust	2
9		Bearing - Thrust	1
10		Bearing	1
11	76-0860	Shaft - Coupling	1
12	76-0850	Bearing - Thrust	1
13	76-0930	Link - Drive	7
14	76-1030	Screw - Cap, Hex. Hd.	1
15		Seal - Commutator	1
16		Commutator	1

Ref. No.	Part No.	Description	No. Used
17	3257-42	Key - Woodruff	1
18	76-0870	Plate - Wear	1
19		Rotor	1
20		Vane	7
21		Stator	1
22	76-0840	Manifold	1
23		Ring - Commutator	1
24	76-0940	Assembly - Cover, End	1
*	76-0950	Rotor Set (Incl. Ref. #19-21)	1
*	76-0880	Assembly - Commutator (Incl. Ref. #15, 16 & 23)	1
*	76-0800	Kit - Seal (Incl. Ref. #1, 4-7 & 15)	1
*	76-0810	Assembly - Housing (Incl. Ref. #2, 3 & 8-10)	1

\*Not Illustrated

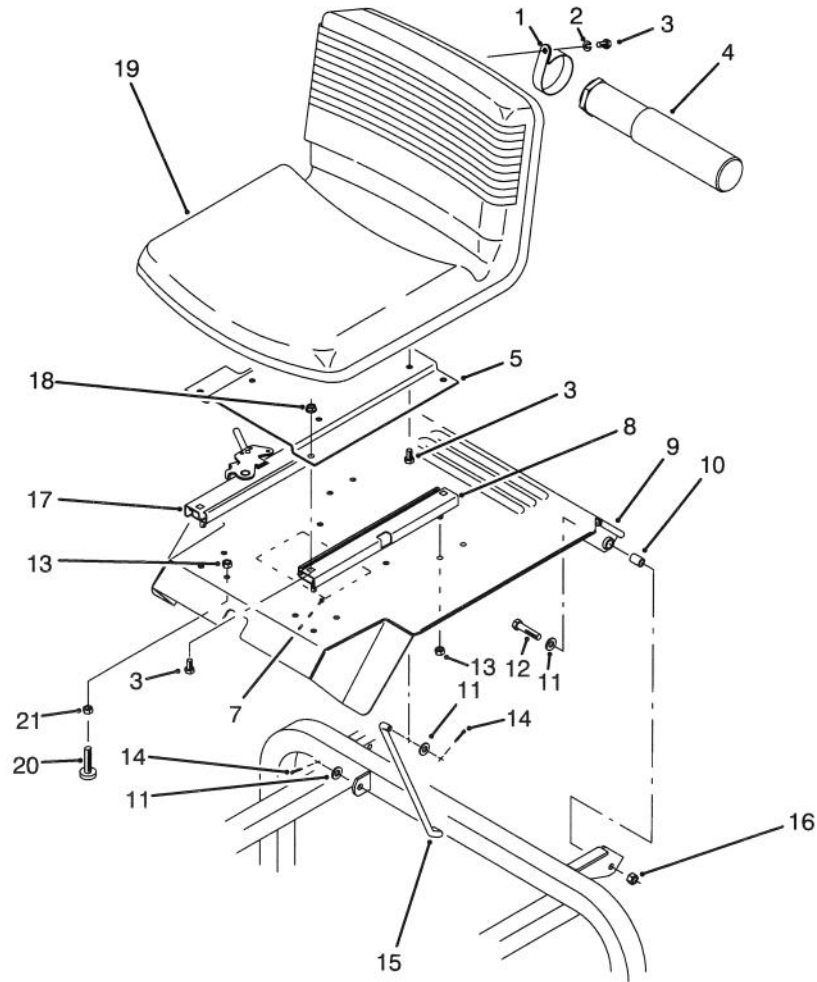


T-1471

## STEERING ASSEMBLY

Ref. No.	Part No.	Description	No. Used
1	76-1420	Wheel - Steering	1
2	32121-111	Pin - Roll	1
3	233-39	Handle	1
4	88-8240	Pin - Tilt Lock	1
5	322-43	Screw - Cap Hex. Hd.	1
6	88-8280	Lever - Steering Adjust	1
7	3256-23	Washer - Flat	4
8	88-8530	Block - Lock Upper	1
9	32151-105	Ring - Retaining	1
10	85-9120	Spacer	3
11	322-5	Screw - Cap Hex. Hd.	3
12	3296-29	Nut - Lock	6
13	32121-112	Pin - Roll	1
14	322-3	Screw - Cap Hex. Hd.	3
15	85-8970	Shield - Chain	1
16	3296-4	Nut - Lock	2

Ref. No.	Part No.	Description	No. Used
17	18-6380	Bolt - Adjustment	2
18	2710-11	Link - Connecting	2
19	85-8030	Chain	1
20	85-9180	Sprocket	1
21	256-287	Bushing - Sleeve	2
22	85-9210	Shaft - Steering Lower	1
23	85-9200	Joint - Universal	1
24	32121-15	Pin - Roll	2
25	88-8290	Steering Column Assembly (Incl. Ref. #26)	1
26	256-185	Bushing - Sleeve	1
27	85-9220	Shaft - Steering Upper	1
28	3289-24	Screw - Socket Flat Hd.	1
29	88-8510	Dowel	2
30	88-8520	Block - Lock Lower	1



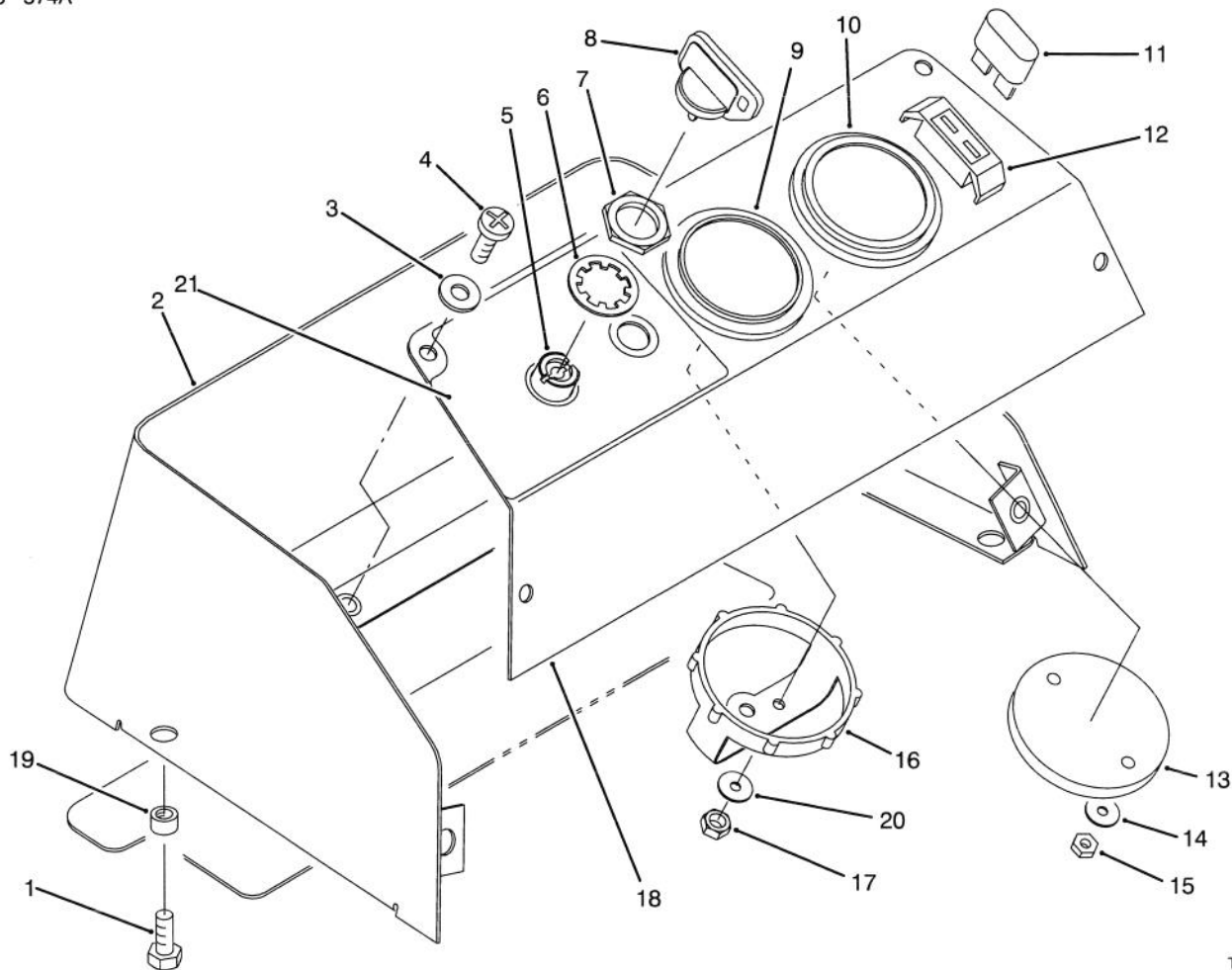
## SEAT ASSEMBLY

T-1470A

Ref. No.	Part No.	Description	No. Used
1	2412-133	Clamp - R	2
2	3253-4	Washer - Lock	2
3	322-2	Screw - Cap Hex. Hd.	10
4	74-0720	Tube - Manual	1
5	85-9660	Plate - Seat	1
‡7	85-8850	Decal - Service (English)	1
8	51-0780	Slide - Seat Adjust	1
9	85-9230	Support - Seat	1
10	85-0290	Spacer - Seat Support	2
11	3256-24	Washer - Flat	4

Ref. No.	Part No.	Description	No. Used
12	323-9	Screw - Cap Hex. Hd.	2
13	3296-29	Nut - Lock	6
14	3274-4	Pin - Cotter	2
15	85-9320	Rod - Seat Prop	1
16	3296-39	Nut - Lock	2
17	51-0790	Slide - Seat Adjust	1
18	32128-20	Nut - Flange Lock	4
19	76-1401	Seat	1
20	32141-36	Screw - Leveling	2
21	3218-2	Nut - Jam	2

‡For different language versions of this part, see International Decal Cross Reference.

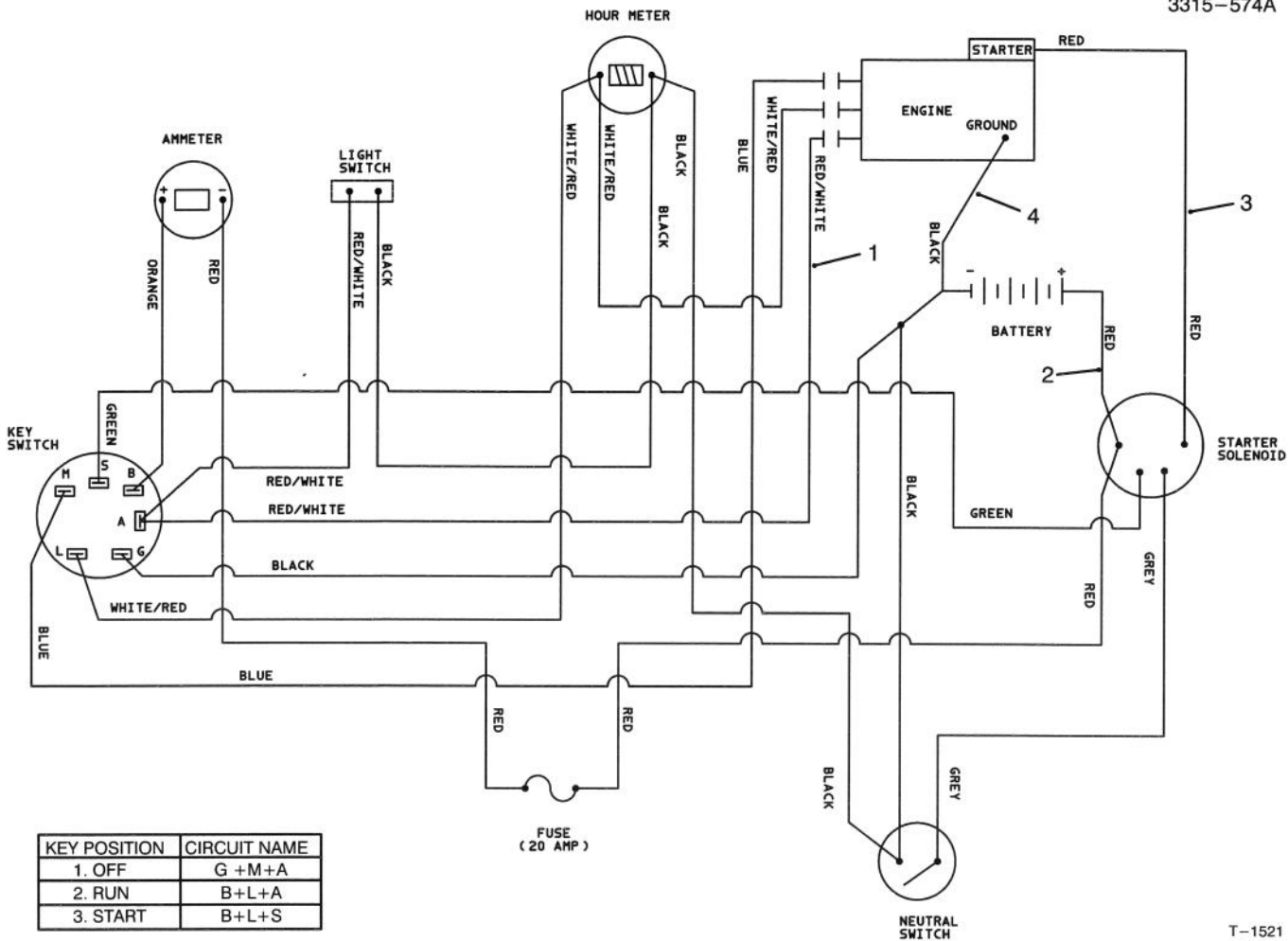


T-1479

## CONTROL PANEL ASSEMBLY

Ref. No.	Part No.	Description	No. Used	Ref. No.	Part No.	Description	No. Used
1	321-3	Screw - Cap Hex. Hd.	4	13		Clamp - Hour Meter	1
2	85-9070	Console Assembly (Incl. Ref. #19)	1	14	3255-20	Washer - E.T.L.W.	2
3	3256-1	Washer - Flat	4	15	3217-25	Nut - Hex	2
4	3258-166	Screw - Phillips Hd.	4	16	39-9600	Clamp - Ammeter	1
5	83-0020	Ignition Switch Assembly (Incl. Ref. #6-8)	1	17	3219-14	Nut - Hex.	2
6	3254-5	Washer - Lock	1	18	85-8890	Panel - Console	1
7	218-461	Nut - Lock	1	19	32148-6	Nut - Clinch	8
8	63-8360	Key - Ignition	1	20		Washer - Flat	1
9	83-0820	Ammeter Assembly (Incl. Ref. #16-17 & 20)	1	‡21	85-8830	Decal - Console (English)	1
10	66-2950	Hour Meter Assembly (Incl. Ref. #13-15)	1	*	3290-378	Tie - Cable (For Wire Harness)	3
11	218-594	Fuse - 20 Amp	2	*	3290-509	Mount - Tie (For Wire Harness)	3
12	80-2120	Wire Harness Assembly (Incl. Ref. #11)	1	*	3274-31	Screw - Hex. Socket Hd. (For Wire Harness)	3

‡For different language versions of this part, see International Decal Cross Reference.

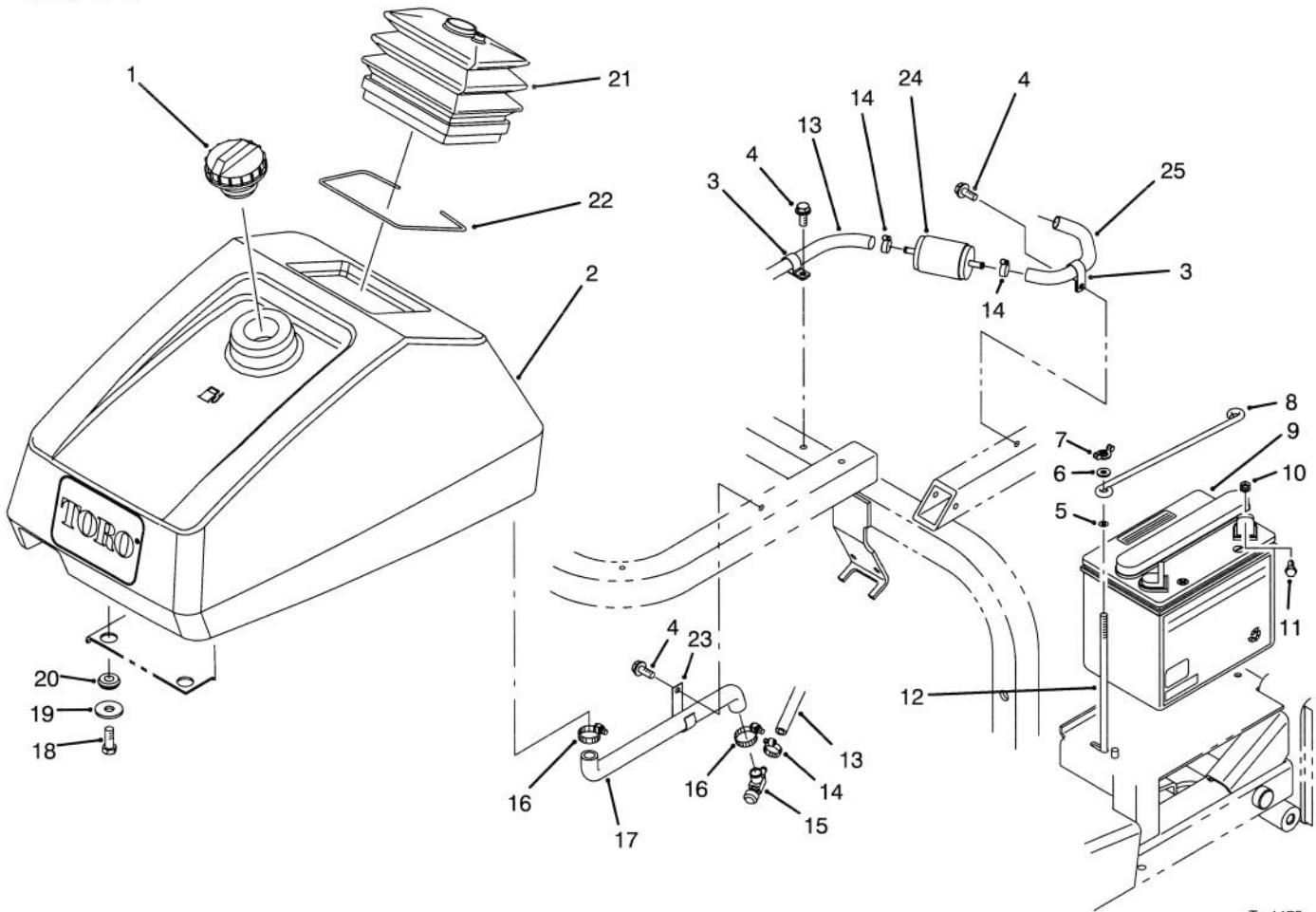


T-1521

## ELECTRICAL SCHEMATIC

Ref. No.	Part No.	Description	No. Used
1	80-2120	Wire Harness - Main	1
2	80-2110	Cable - Solenoid-Starter	1

Ref. No.	Part No.	Description	No. Used
3	83-2420	Cable - Positive	1
4	88-8330	Cable - Engine Ground	1

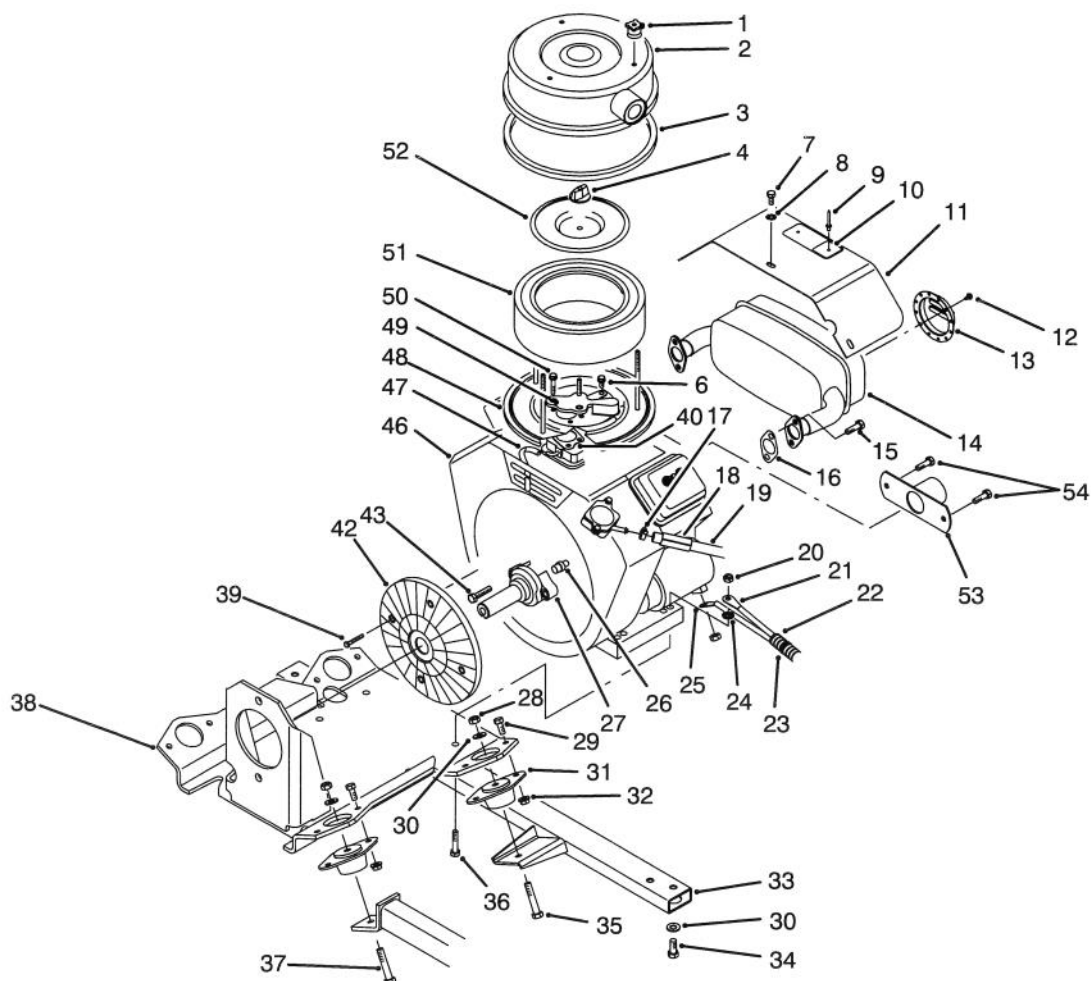


T-1478

## FUEL TANK & BATTERY ASSEMBLY

Ref. No.	Part No.	Description	No. Used
1	70-8631	Cap - Fuel	1
2	85-9000	Tank - Fuel	1
3	2412-93	Clamp - R	2
4	32144-11	Screw - Self Tapping	3
5	237-143	Grommet	2
6	3256-22	Washer - Flat	2
7	32103-12	Nut - Wing	2
8	72-4790	Hold-Down - Battery	1
9	92-1678	Battery	1
10	3217-5	Nut - Hex.	2
11	321-3	Screw - Cap Hex. Hd.	2
12	56-7720	Rod - Battery Hold-Down	2
13	21-2480	Hose - Fuel	1

Ref. No.	Part No.	Description	No. Used
14	2412-108	Clamp - Hose	3
15	83-1390	Fitting - Fuel Shut-Off	1
16	2412-36	Clamp - Hose	2
17	85-9140	Hose - Fuel	1
18	323-5	Screw - Cap Hex. Hd.	4
19	63-8410	Washer - Flat	4
20	240-11	Grommet	4
21	85-9010	Boot - Steering	1
22	85-8930	Retainer - Boot	1
23	2412-109	Clip - J	1
24	83-1320	Filter - Fuel	1
25	47-2964	Hose - Fuel	1



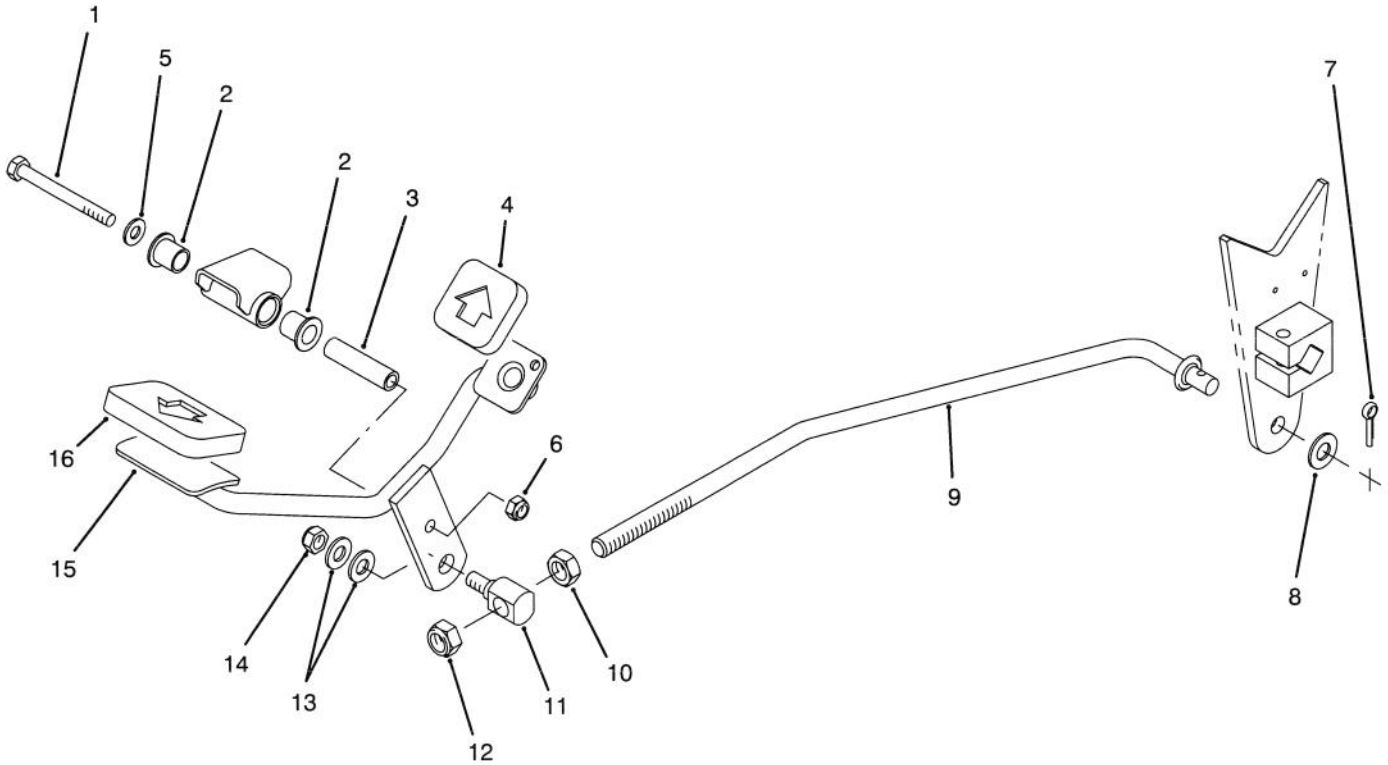
T-1474A

## ENGINE & MUFFLER ASSEMBLY

Ref. No.	Part No.	Description	No. Used	Ref. No.	Part No.	Description	No. Used
†1	281051	Knob – Air Cleaner	3	†26	805613	Pin – Pilot	1
2	85-8370	Cover – Air Cleaner	1	†27	262680	Shaft – Stub	12
3	85-8360	Seal – Cover	1	28	3296-39	Nut – Lock	4
†4	491875	Knob – Air Cleaner	1	29	322-4	Screw – Cap Hex. Hd.	8
†6	805406	Screw – Hex. Flange Hd.	3	30	3256-24	Washer – Flat	8
7	48-7620	Screw – Cap Hex. Hd.	3	31	83-1031	Mount – Engine	4
8	3255-7	Washer – ETLW	3	32	3296-29	Nut – Lock	8
9	3269-32	Rivet – Pop	2	33	85-8600	Support – Engine	1
‡10	80-8290	Plate – Hot Surface (English)	1	34	323-33	Screw – Cap Hex. Hd.	4
11	88-8380	Muffler Shield Assembly (Incl. Ref. #9 & 10)	1	35	323-10	Screw – Cap Hex. Hd.	2
12	83-2230	Screw	4	36	322-9	Screw – Cap Hex. Hd.	4
13	83-2220	Deflector – Exhaust	1	37	323-11	Screw – Cap Hex. Hd.	2
14	80-2060	Muffler	1	38	85-8640	Base – Engine	1
†15	805158	Screw	4	†39	805447	Screw – Cap Hex. Hd.	4
†16	805023	Gasket – Exhaust	2	†40	805655	Gasket – Carburetor	1
17	2412-108	Clamp – Hose	1	†42	808034	Screen – Rotating	1
18	38-3400	Guard – Rubber	1	†43	093847	Screw – Cap Hex. Hd.	2
19	47-2964	Hose – Fuel	1	46	85-8000	Engine Assembly	1
20	3296-29	Nut – Lock	4	†47	805836	Hose – Fuel	1
21	88-8330	Cable – Negative	1	48	85-8430	Base – Air Cleaner	1
22	88-8390	Cover – Cable	1	†49	807797	Shield – Carburetor Inlet	1
23	3290-378	Tie – Cable	2	†50	805057	Screw – Cap Hex. Hd.	2
24	3254-2	Washer – ITLW	1	†51	394018	Element – Air Cleaner	1
25	83-2420	Cable – Positive	1	†52	805631	Plate – Element	1
				53	92-2340	Cover	1
				54	3210-2	Screw – Cap Hex. Hd.	2

†Contact your local Briggs & Stratton Dealer for part replacement.

‡For different language versions of this part, see International Decal Cross Reference.

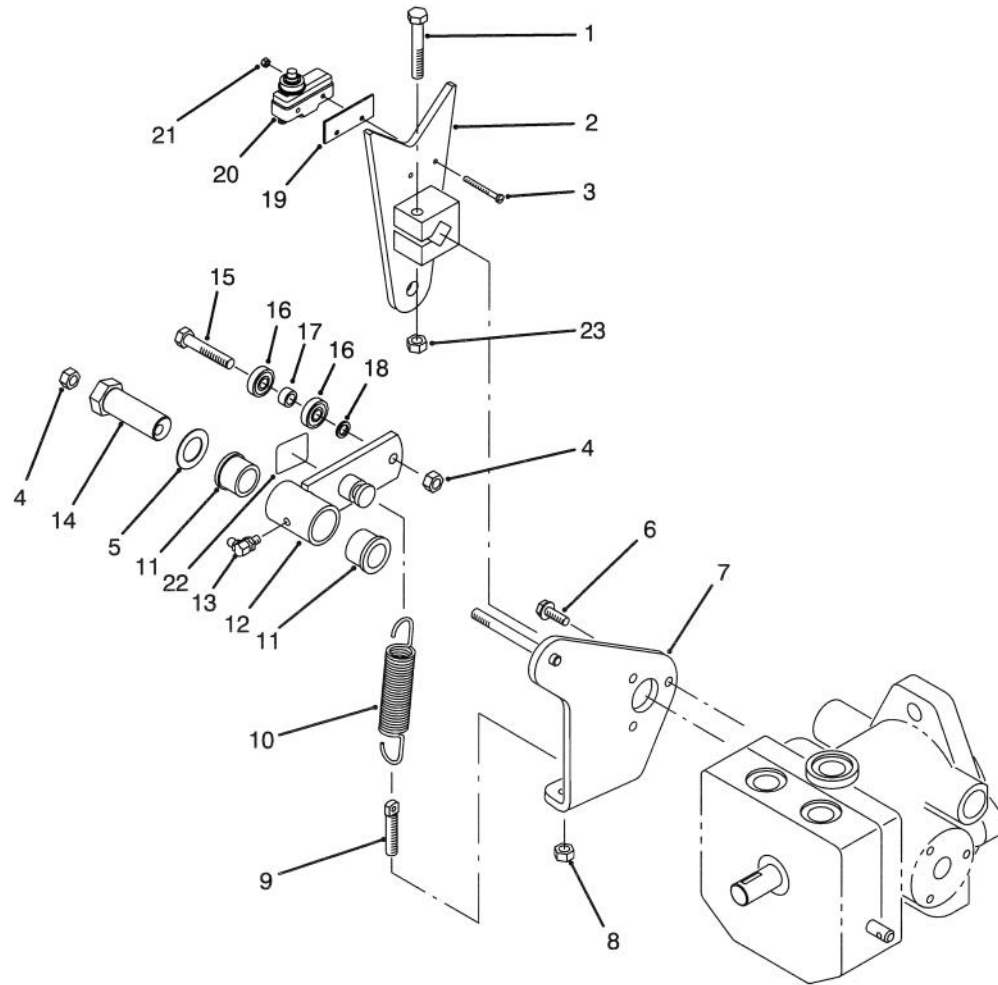


T-1476

## TRACTION PEDAL ASSEMBLY

Ref. No.	Part No.	Description	No. Used
1	322-14	Screw - Cap Hex. Hd.	1
2	256-219	Bushing - Flange	2
3	85-8960	Spacer	1
4	74-9110	Pad - Reverse	1
5	3256-23	Washer - Flat	1
6	3296-29	Nut - Lock	1
7	3272-16	Pin - Cotter	1
8	3256-26	Washer - Flat	1

Ref. No.	Part No.	Description	No. Used
9	85-8450	Rod - Control	1
10	3218-5	Nut - Jam	1
11	92-2344	Trunnion	1
12	3296-23	Nut - Lock	1
13	3256-24	Washer - Flat	2
14	3296-39	Nut - Lock	1
15	92-2343	Pedal Assembly	1
16	74-9100	Pad - Forward	1



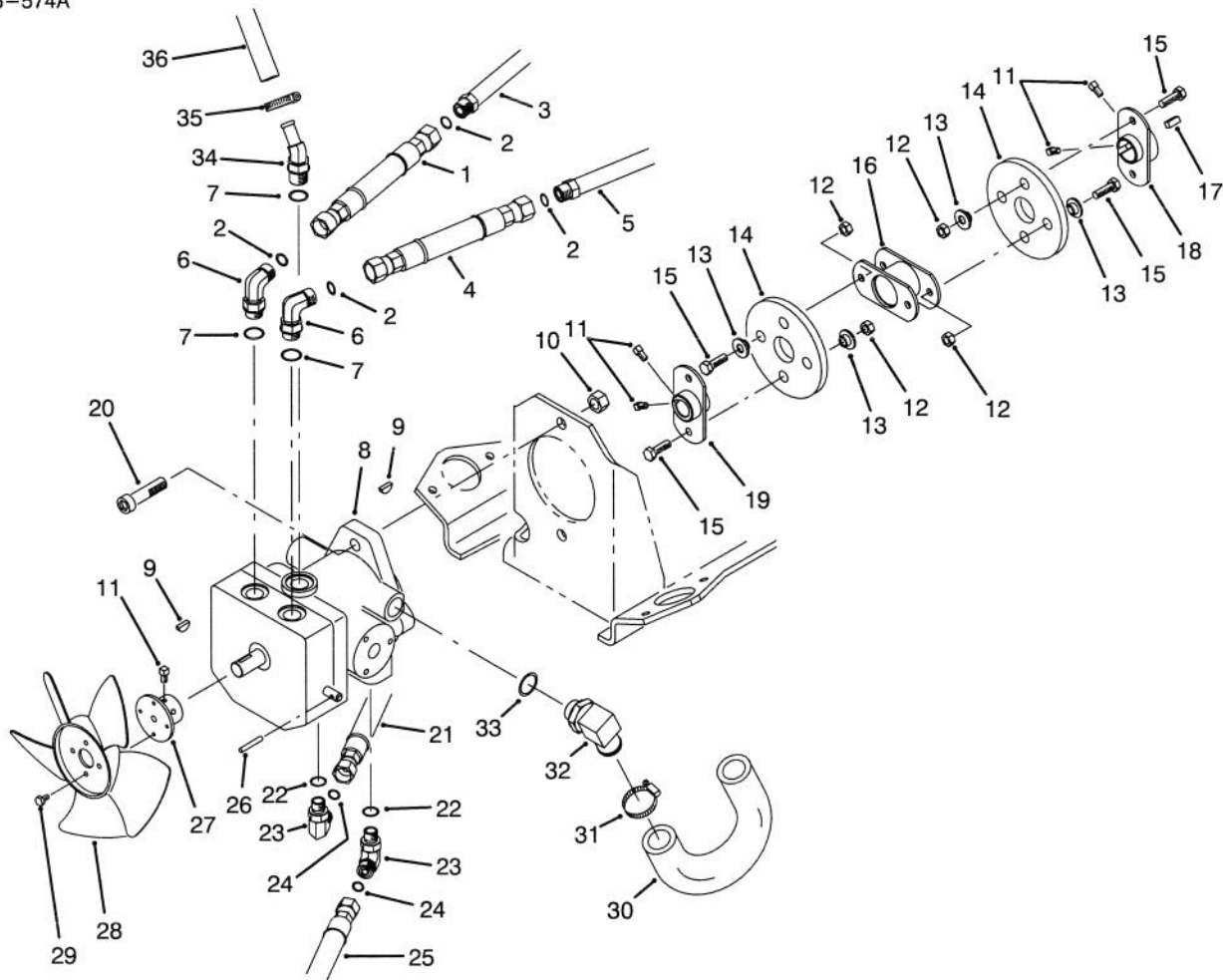
T-1480

## PUMP CONTROL LEVER ASSEMBLY

Ref. No.	Part No.	Description	No. Used
1	323-10	Screw - Cap Hex. Hd.	1
2	85-8300	Lever - Pump	1
3	32105-21	Screw - Machine	2
4	3296-29	Nut - Lock	2
5	3-6498	Washer - Thrust	1
6	49-2040	Screw - Hex. Flange Hd.	3
7	85-8320	Plate - Pump	1
8	3296-4	Nut - Lock	1
9	18-6380	Pin - Adjusting	1
10	85-9030	Spring - Extension	1
11	256-113	Bushing - Flange	2
12	85-8460	Switch Arm Assembly (Incl. Ref. #11 & 13)	1

Ref. No.	Part No.	Description	No. Used
13	302-60	Fitting - Grease	1
14	76-8640	Stud - Traction	1
15	322-8	Screw - Cap Hex. Hd.	1
16	251-259	Bearing	2
17	85-9120	Spacer	1
18	75-5470	Spacer	1
19	85-9150	Plate - Switch	1
20	29-6163	Switch - Neutral	1
21	3296-9	Nut - Lock	2
‡22	85-8860	Decal - Eccentric Bolt (English)	1
23	3296-39	Nut - Lock	1

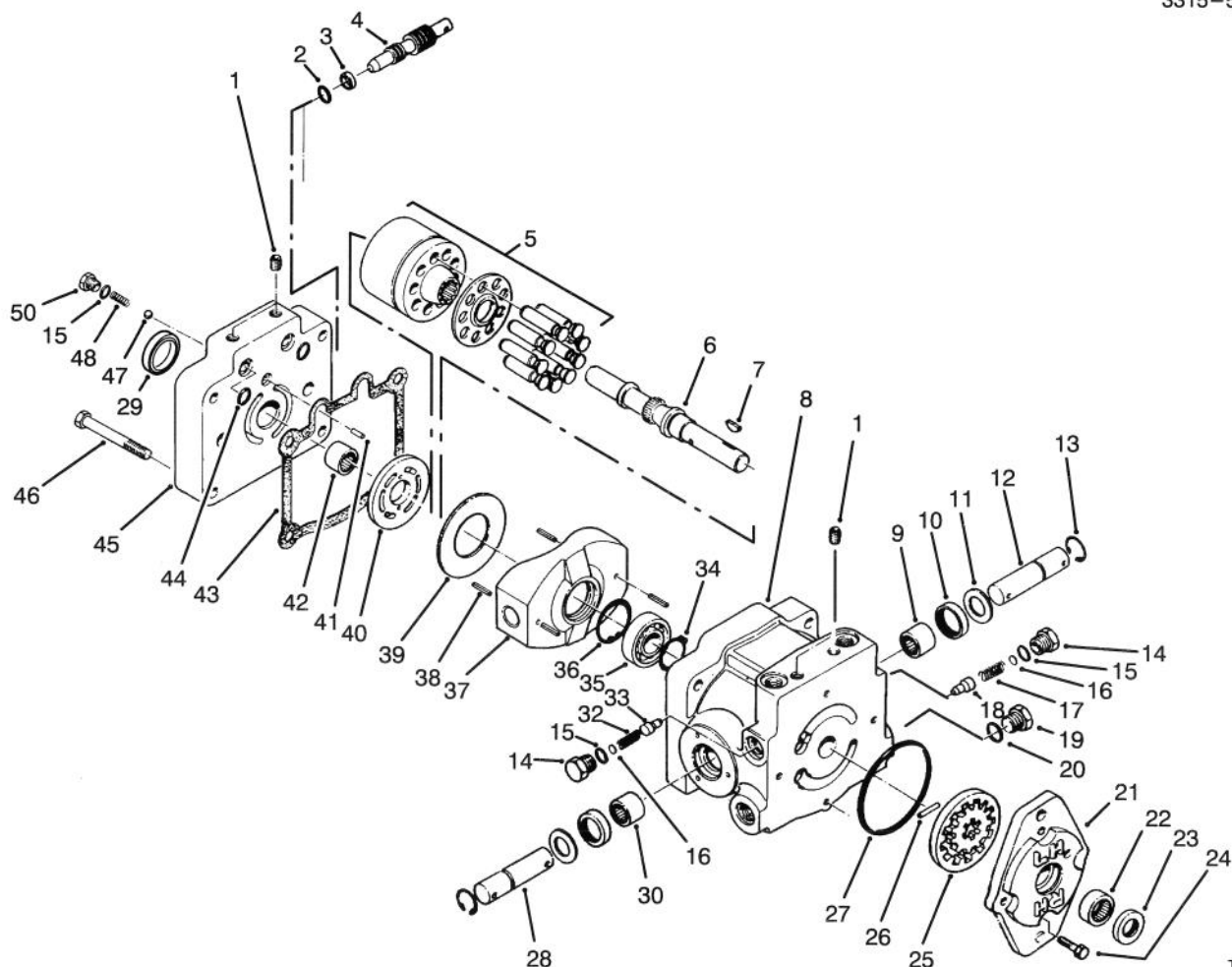
‡For different language versions of this part, see International Decal Cross Reference.



T-1475

## HYDRAULIC PUMP INSTALLATION ASSEMBLY

Ref. No.	Part No.	Description	No. Used	Ref. No.	Part No.	Description	No. Used
1	85-9620	Hose - Hydraulic	1	19	85-8700	Hub - Pump	1
2	237-30	Seal - O-Ring	4	20	3274-5	Screw - Hex. Socket Hd.	2
3	92-2348	Hydraulic Tube Assembly (Incl. Ref. #2)	1	21	85-9600	Hose - Hydraulic	1
4	85-9610	Hose - Hydraulic	1	22	237-42	Seal - O-Ring	2
5	85-9420	Hydraulic Tube Assembly (Incl. Ref. #2)	1	23	340-77	Fitting - Hydraulic 90° (Incl. Ref. #22 & 24)	2
6	340-98	Fitting - Hydraulic 90° (Incl. Ref. #2 & 7)	2	24	237-22	Seal - O-Ring	2
7	237-79	Seal - O-Ring	3	25	85-9590	Hose - Hydraulic	1
8	85-8240	Hydraulic Pump Assembly (Incl. Ref. #9)	1	26	32121-6	Pin - Roll	1
9	3257-32	Key - Woodruff	2	27	85-8670	Hub - Fan	1
10	3296-23	Nut - Lock	2	28	85-9560	Fan	1
11	3241-5	Screw - Set Sq. Hd.	6	29	32144-73	Screw - Cap Hex. Hd.	4
12	3296-29	Nut - Hex.	8	30	85-7680	Hose - Hydraulic	1
13	27-6600	Spacer - Coupler	8	31	2412-34	Clamp - Hose	1
14	80-8650	Coupler - Rubber	2	32	61-2710	Fitting - Hydraulic 90° (Incl. Ref. #33)	1
15	322-4	Screw - Cap Hex. Hd.	8	33	237-80	Seal - O-Ring	1
16	85-8770	Coupling	1	34	354-126	Fitting - Hydraulic 45° (Incl. Ref. #7)	1
17	85-9020	Key - Square	1	35	2412-36	Clamp - Hose	1
18	85-8730	Hub - Engine	1	36	85-9450	Hose - Hydraulic	1



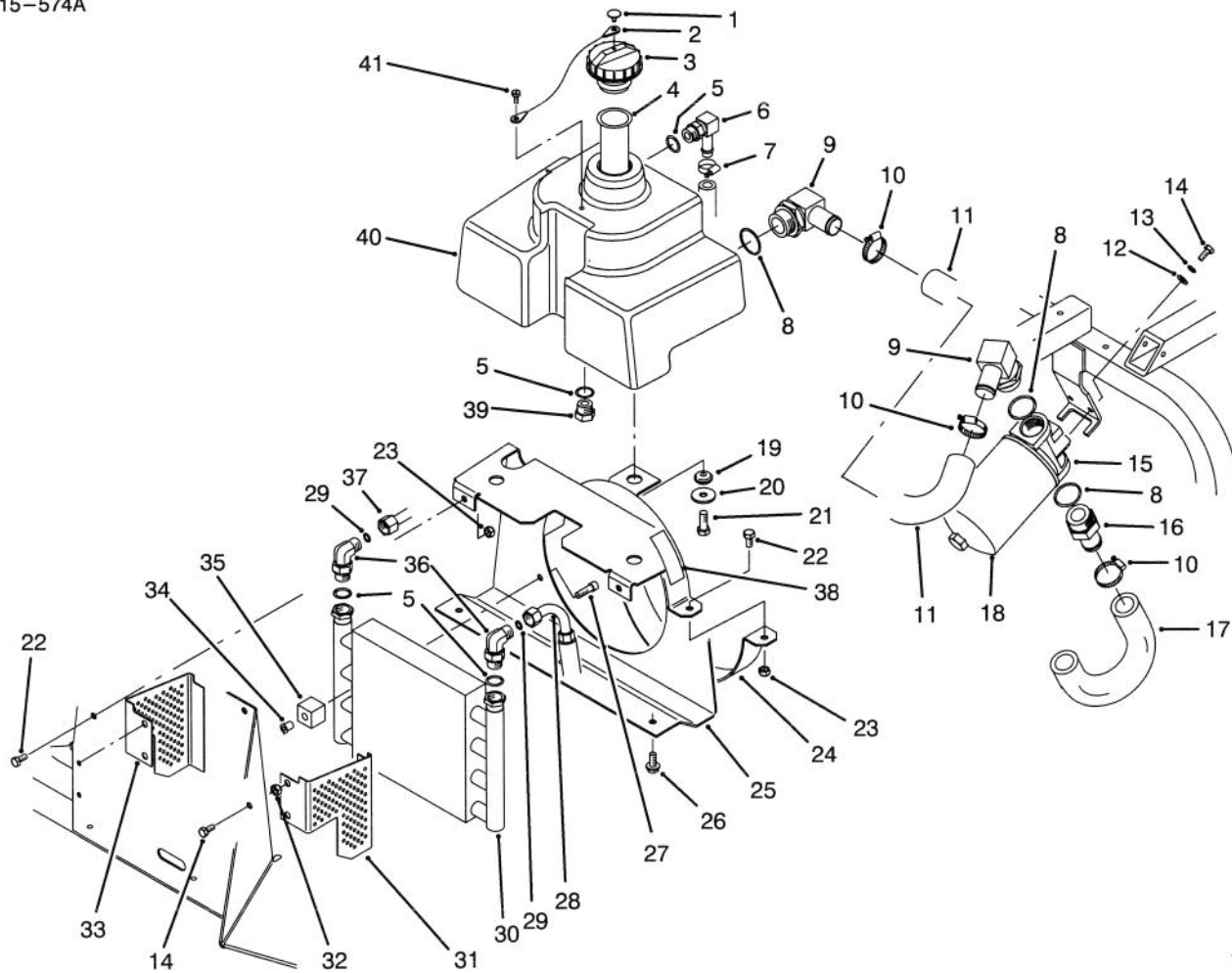
T-0245

## HYDRAULIC PUMP ASSEMBLY NO. 85-8240

Ref. No.	Part No.	Description	No. Used
1	285-17	Plug - Pipe	6
2	237-22	O-Ring	1
3	25-2630	Ring	1
4	88-8220	Valve - By-Pass	1
5	48-1800	Cylinder Block Kit	1
6	88-8140	Shaft - Pump	1
7	3257-32	Key - Woodruff	1
8	88-8170	Kit - Housing	1
9	252-82	Bearing - Needle	1
10	25-3210	Seal - Lip	2
11	25-2510	Washer	2
12	88-8200	Shaft - Trunion	1
13	32151-46	Ring - Retaining	2
14	25-2460	Plug	2
15	237-86	O-Ring	4
16	25-2470	Kit - Shim Pack	2
17	25-2570	Spring - Relief Valve	1
18	83-7260	Cone - Relief Valve	1
19	88-8210	Plug Assembly (Incl. Ref. #20)	1
20	237-80	O-Ring	1
21	25-2690	Housing - Charge Pump	1
22	67-8050	Bearing - Needle	1
23	67-8060	Seal - Lip	1
24	322-4	Screw - Cap Hex. Hd.	4
25	25-2680	Gerotor Assembly	1
26	25-2530	Pin - Straight	1
27	237-95	O-Ring	1

Ref. No.	Part No.	Description	No. Used
28	88-8180	Shaft - Trunion	1
29	88-8230	Seal - Lip	1
30	88-8190	Bearing - Journal	1
32	25-2480	Spring - Charge Relief	1
33	83-7260	Cone - Charge Relief	1
34	32120-15	Ring - Retaining	1
35	251-8	Bearing - Ball	1
36	32120-11	Ring - Retaining	1
37	25-2450	Swash/Plate	1
38	32121-91	Pin - Coiled Spring	3
39	25-2380	Plate - Thrust	1
40	88-8160	Plate - Valve	1
41	25-2430	Pin - Straight	1
42	46-8400	Bearing - Needle	1
43	25-2400	Gasket	1
44	237-30	O-Ring	2
45	88-8150	Cap - Pump End	1
46	323-11	Screw - Cap Hex. Hd.	4
47	25-2490	Ball - Check Valve	2
48	25-2640	Spring - Check Valve	2
50	25-2650	Plug - Check Valve	2
*	25-3180	Kit - Check Valve (Incl. Ref. #15, 47, 48 & 50)	1
*	49-8520	Kit - Implement Relief (Incl. Ref. #14, 15, 17 & 18)	1
*	49-8510	Kit - Charge Relief (Incl. Ref. #14-16 & 32-33)	1

\*Not Illustrated

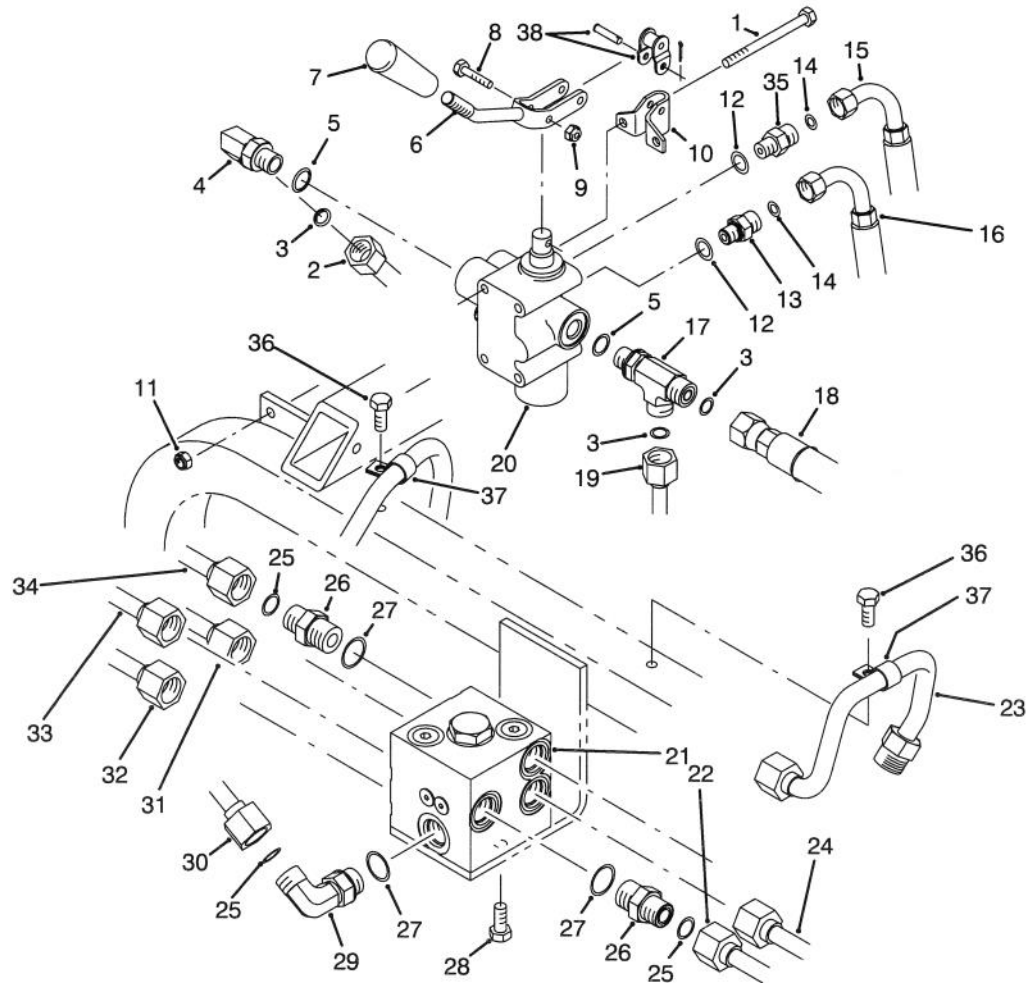


T-1473

## HYDRAULIC RESERVOIR ASSEMBLY

Ref. No.	Part No.	Description	No. Used	Ref. No.	Part No.	Description	No. Used
1	2410-73	Retainer - Teather	1	23	3296-29	Nut - Lock	4
2	75-0540	Teather	1	24	85-8570	Shroud - Lower	1
3	86-4870	Reservoir Cap Assembly (Incl. Ref. #1 & 2)	1	25	14-7579	Cooler Mount Assembly (Incl. Ref. #38)	1
4	85-9510	Screen - Filler	1	26	32144-11	Screw - Thread Forming	3
5	237-79	Seal - O-Ring	4	27	3274-86	Screw - Hex. Socket Hd.	2
6	354-120	Fitting - Hydraulic 90° (Incl. Ref. #5)	1	28	85-9590	Hose - Hydraulic	1
7	2412-36	Clamp - Hose	1	29	237-22	Seal - O-Ring	2
8	237-146	Seal - O-Ring	3	30	85-9460	Cooler - Oil	1
9	23-8910	Fitting - Hydraulic 90° (Incl. Ref. #8)	2	31	88-8120	Screen Assembly L.H. (Incl. Ref. #32)	1
10	2412-34	Clamp - Hose	3	32	32148-6	Nut - Clinch	4
11	85-7610	Hose - Hydraulic	1	33	88-8110	Screen Assembly R.H. (Incl. Ref. #32)	1
12	3256-22	Washer - Flat	2	34	85-9670	Nut - T	2
13	3253-3	Washer - Lock	2	35	85-9550	Clamp - Rubber	2
14	321-3	Screw - Cap Hex. Hd.	6	36	340-18	Fitting - Hydraulic 90° (Incl. Ref. #5 & 29)	2
15	61-3770	Hydraulic Filter Head Assy.	1	37	92-2349	Tube - Hydraulic	1
16	354-78	Fitting - Hydraulic Straight (Incl. Ref. #8)	1	38	77-3100	Decal - Danger (English)	2
17	85-7680	Hose - Hydraulic	1	39	353-550	Plug - Hydraulic (Incl. Ref. #5)	1
18	23-9740	Element - Hydraulic Filter	1	40	85-9110	Reservoir - Hydraulic	1
19	240-11	Grommet	3	41	32105-13	Screw - Hex. Flange Hd.	1
20	63-8410	Washer - Flat	3				
21	323-5	Screw - Cap Hex. Hd.	3				
22	322-2	Screw - Cap Hex. Hd.	4				

‡For different language versions of this part, see International Decal Cross Reference.

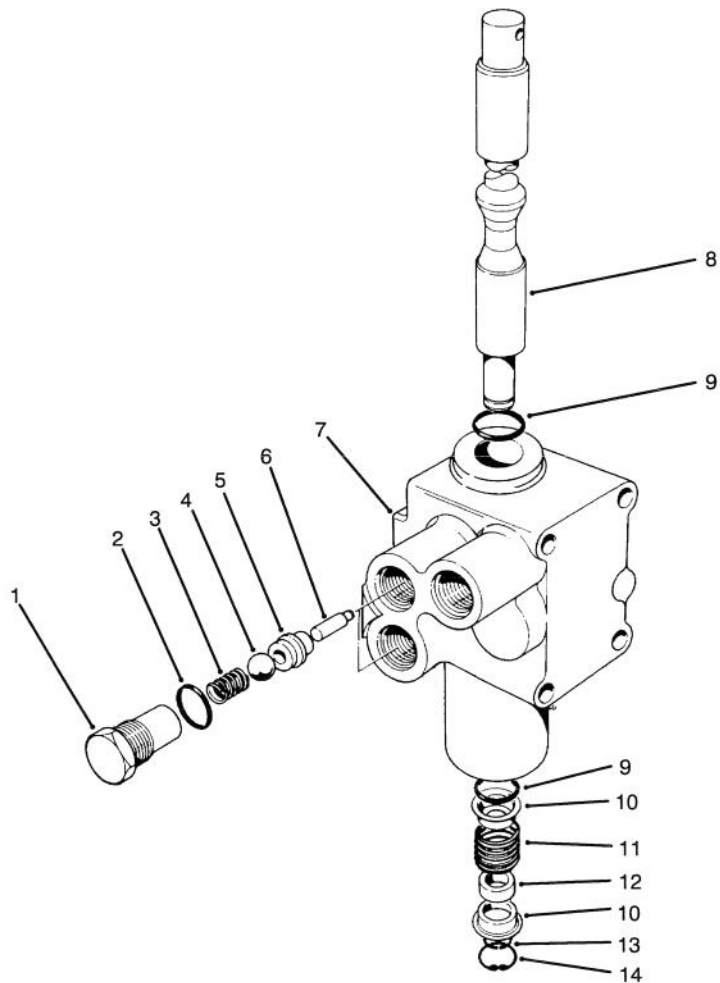


T-1477

## HYDRAULIC MANIFOLD ASSEMBLY

Ref. No.	Part No.	Description	No. Used
1	321-23	Screw - Cap Hex. Hd.	3
2	92-2349	Tube - Hydraulic	1
3	237-22	Seal-O-Ring	3
4	340-77	Fitting - Hydraulic 90° (Incl. Ref. # 3 & 5)	1
5	237-42	Seal-O-Ring	2
6	85-8900	Lever - Lift Valve	1
7	233-39	Handle	1
8	3290-360	Screw - Cap Hex. Hd.	2
9	3296-2	Nut - Lock	2
10	88-8480	Bracket - Pivot	1
11	3296-8	Nut - Lock	3
12	237-78	Seal-O-Ring	2
13	340-92	Fitting - Hydraulic Straight (Incl. Ref. #12 & 14)	1
14	237-21	Seal-O-Ring	2
15	85-9570	Hose - Hydraulic	1
16	85-9580	Hose - Hydraulic	1
17	340-86	Fitting - Hydraulic Tee (Incl. Ref. #3 & 5)	1
18	85-9600	Hose - Hydraulic	1
19	85-0380	Tube - Hydraulic	1

Ref. No.	Part No.	Description	No. Used
20	43-1950	Lift Valve Assembly	1
21	85-9470	Hydraulic Manifold Assembly	1
22	85-7760	Tube - Hydraulic	1
23	85-9420	Tube - Hydraulic	1
24	85-9390	Tube - Hydraulic	1
25	237-79	Seal-O-Ring	8
26	340-4	Fitting - Hydraulic Straight (Incl. Ref. #25 & 27)	7
27	237-30	Seal-O-Ring	8
28	322-3	Screw - Cap Hex. Hd.	2
29	340-98	Fitting - Hydraulic 90° (Incl. Ref. #25 & 27)	1
30	85-9360	Tube - Hydraulic	1
31	85-9410	Tube - Hydraulic	1
32	85-9400	Tube - Hydraulic	1
33	92-2348	Tube - Hydraulic	1
34	85-9370	Tube - Hydraulic	1
35	85-9720	Fitting - Hydraulic Orificed (Incl. Ref. #12 & 14)	1
36	32144-11	Screw - Thread Forming	2
37	2412-138	Clamp - R	2
38	2710-20	Link - Offset	1



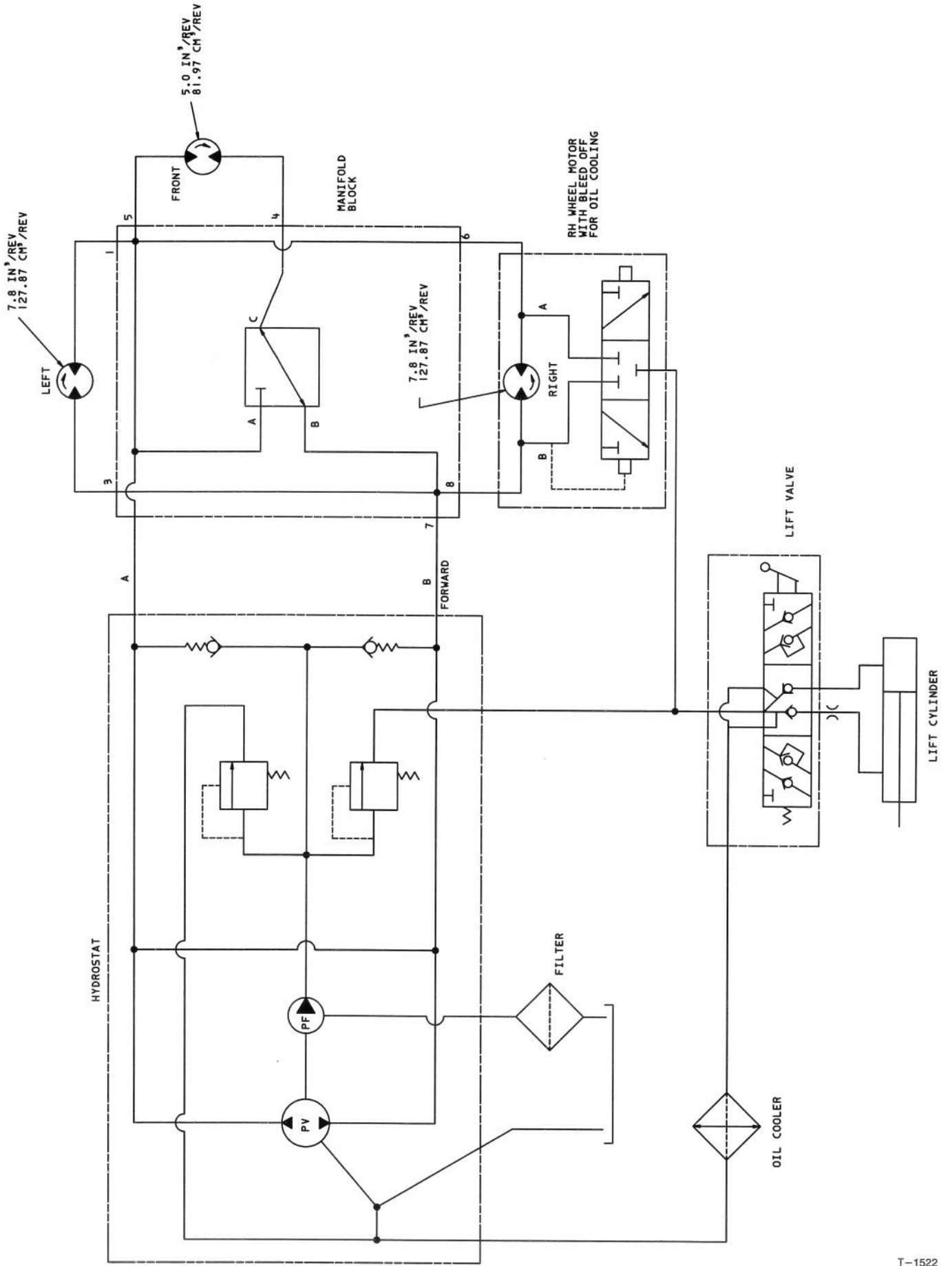
T-0236

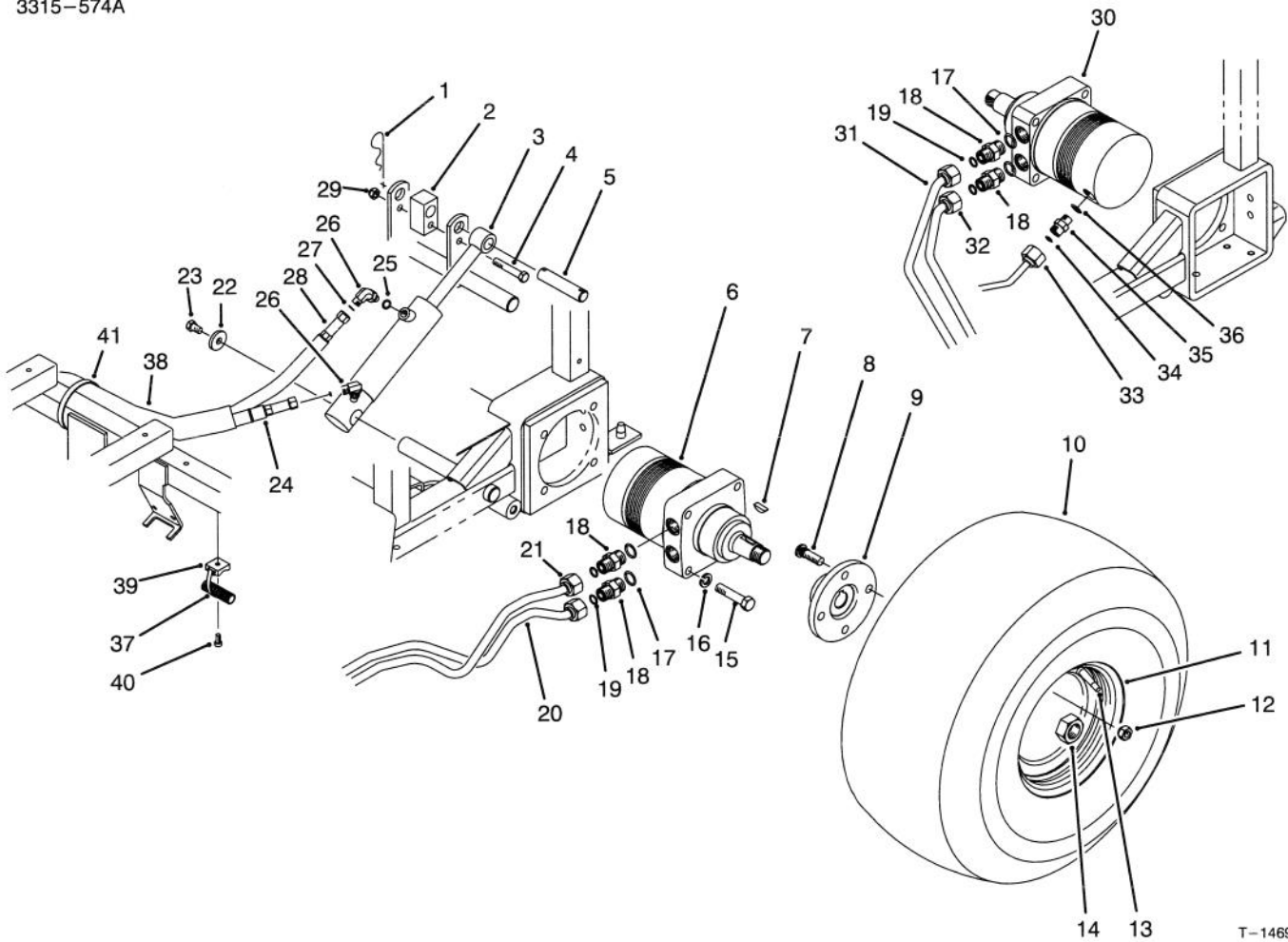
## CONTROL VALVE ASSEMBLY NO. 43-1950

Ref. No.	Part No.	Description	No. Used
1	22-8330	Plug	2
2	237-42	O-Ring	2
3	22-8340	Spring	2
4	22-8350	Ball	2
5	22-8370	Seat-Check Valve	2
6	22-8360	Pin - Cam	2
7		Body	1

Ref. No.	Part No.	Description	No. Used
8	22-8420	Spool	1
9	22-8500	O-Ring	2
10	22-8380	Retainer - Spring	2
11	22-8410	Spring	1
12	23-3030	Spacer	1
13	22-8480	Ring - Retaining, Spool	1
14	22-8490	Ring - Retaining	1

# HYDRAULIC SCHEMATIC





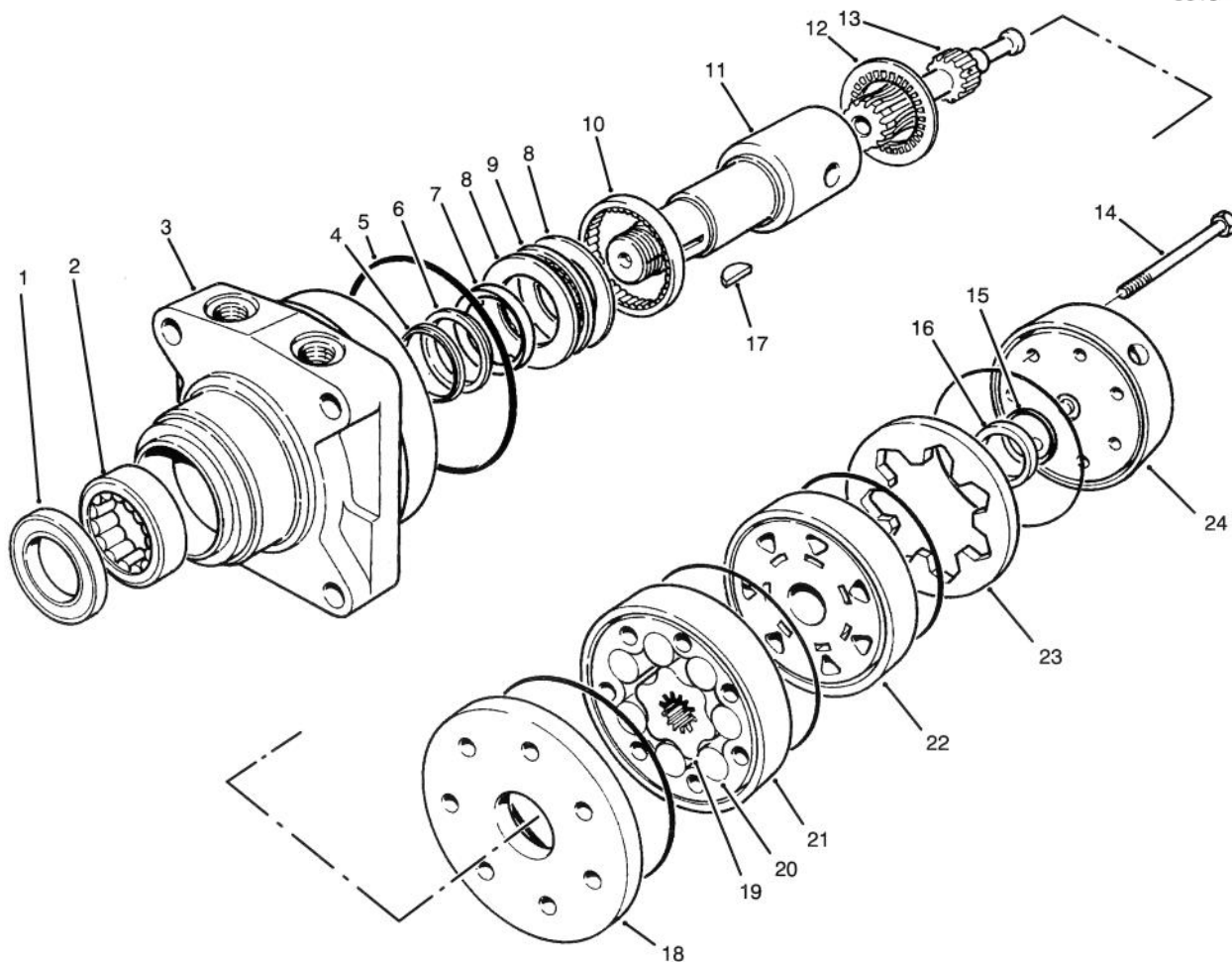
T-1469

## REAR WHEEL & LIFT ASSEMBLY

Ref. No.	Part No.	Description	No. Used
1	3290-256	Pin - Hair	2
2	85-9160	Spacer	1
3	83-7000	Cylinder Assembly	1
4	323-11	Screw - Cap Hex. Hd.	1
5	85-9170	Pin - Cylinder	1
6	75-9831	Hydraulic Motor Assy. L.H.	1
7	3257-42	Key - Woodruff	2
8	10-6830	Stud - Drive	8
9	17-4710	Hub - Wheel	2
10	85-8290	Tire	2
11	46-4810	Rim	2
12	242-50	Nut - Lock	8
13	232-35	Valve - Stem	2
14	26-3790	Nut - Lock	2
15	325-9	Screw - Cap Hex. Hd.	8
16	3253-7	Washer - Lock	8
17	237-80	Seal-O-Ring	4
18	340-6	Fitting - Hydraulic Straight (Incl. Ref. #17-19)	4
19	237-30	Seal-O-Ring	4
20	85-9390	Tube - Hydraulic	1
21	85-7760	Tube - Hydraulic	1

Ref. No.	Part No.	Description	No. Used
22	53-6380	Washer	1
23	232-34	Screw - Cap Hex. Hd.	1
24	85-9580	Hose - Hydraulic	1
25	237-78	Seal-O-Ring	2
26	340-132	Fitting - Hydraulic 90° (Incl. Ref. #25-27)	2
27	237-21	Seal-O-Ring	2
28	85-9570	Hose - Hydraulic	1
29	3296-39	Nut - Lock	1
30	75-9840	Hydraulic Motor Assy. R.H.	1
31	85-9400	Tube - Hydraulic	1
32	85-9410	Tube - Hydraulic	1
33	85-0380	Tube - Hydraulic	1
34	237-22	Seal - O-Ring	1
35	340-2	Fitting - Hydraulic Straight (Incl. Ref. #34 & 36)	1
36	237-42	Seal - O-Ring	1
37	3290-378	Tie - Cable	3
38	56-7981	Sleeve - Protective	1
39	3290-509	Mount - Tie	3
40	3274-31	Screw - Hex. Socket Hd.	3
41	3334-945	Tie - Cable	1

\*Not Illustrated



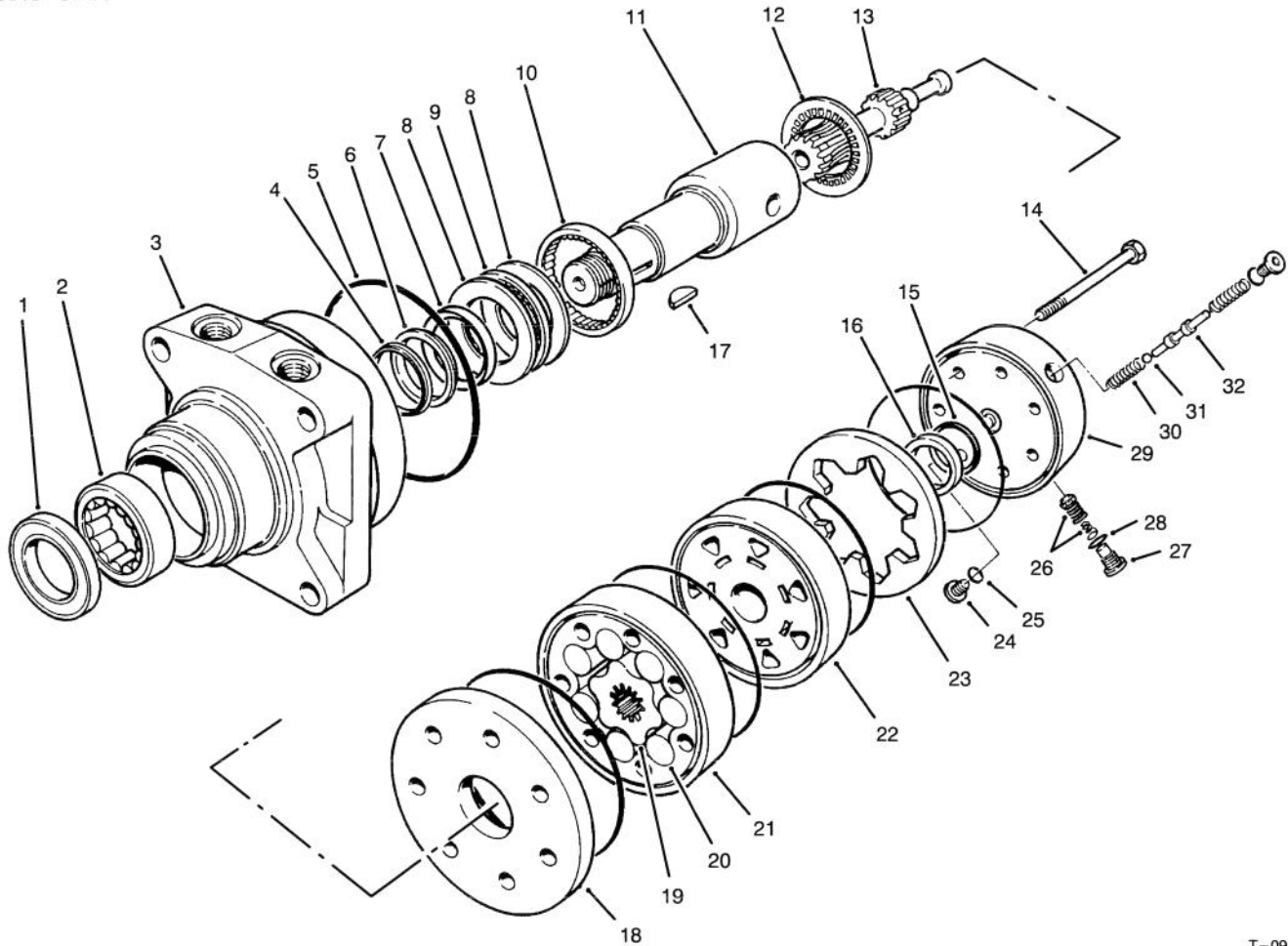
T-0983

## LEFT REAR HYDRAULIC MOTOR ASSEMBLY NO. 75-9831

Ref. No.	Part No.	Description	No. Used
1		Seal - Dirt & Water	1
2		Bearing	1
3		Housing	1
4		Washer - Backup	1
5		Seal - Rings	5
6		Washer - Backup	1
7		Seal - Inner	1
8		Washer - Thrust	2
9		Bearing - Thrust	1
10		Bearing	1
11	76-0860	Shaft - Coupling	1
12	76-0850	Bearing - Thrust	1
13	76-0820	Link - Drive	7
14	76-1020	Screw - Cap, Hex. Hd.	1
15		Seal - Commutator	1
16		Commutator	1

Ref. No.	Part No.	Description	No. Used
17	3257-42	Key - Woodruff	1
18	76-0870	Plate - Wear	1
19		Rotor	1
20		Vane	7
21		Stator	1
22	76-0840	Manifold	1
23		Ring - Commutator	1
24	76-0940	Assembly - Cover, End	1
*	76-0830	Rotor Set (Incl. Ref. #19-21)	1
*	76-0880	Assembly - Commutator (Incl. Ref. #15, 16 & 23)	1
*	76-0800	Kit - Seal (Incl. Ref. #1, 4-7 & 15)	1
*	76-0810	Assembly - Housing (Incl. Ref. #2, 3 & 8-10)	1

\*Not Illustrated



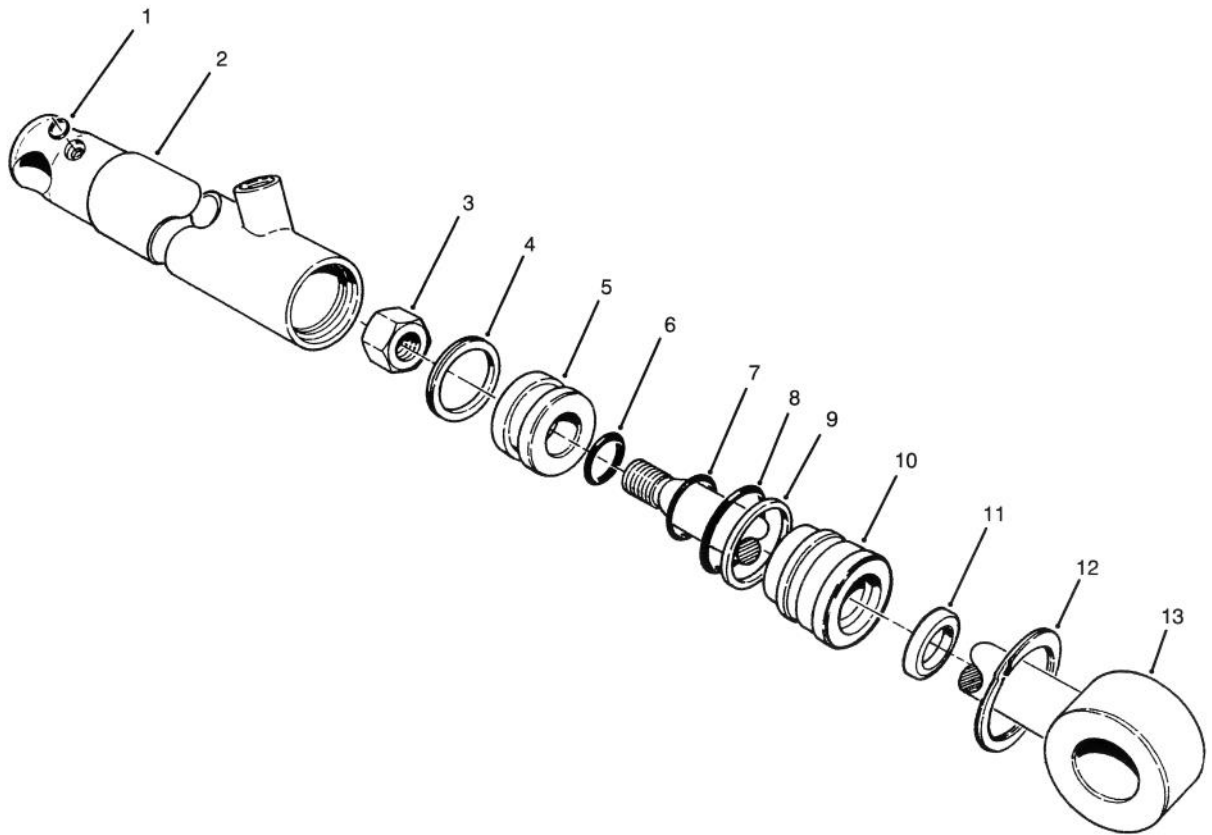
T-0982

## RIGHT REAR HYDRAULIC MOTOR ASSEMBLY NO. 75-9840

Ref. No.	Part No.	Description	No. Used
1		Seal - Dirt & Water	1
2		Bearing	1
3		Housing	1
4		Washer - Backup	1
5		Seal - Rings	5
6		Washer - Backup	1
7		Seal - Inner	1
8		Washer - Thrust	2
9		Bearing - Thrust	1
10		Bearing	1
11	76-0860	Shaft - Coupling	1
12	76-0850	Bearing - Thrust	1
13	76-0820	Link - Drive	1
14	76-1040	Screw - Cap, Hex. Hd.	7
15		Seal - Commutator	1
16		Commutator	1
17	3257-42	Key - Woodruff	1
18	76-0870	Plate - Wear	1
19		Rotor	1
20		Vane	7
21		Stator	1

Ref. No.	Part No.	Description	No. Used
22	76-0840	Manifold	1
23		Ring - Commutator	1
24		Plug	2
25		O-Ring	2
26		Valve - Relief	1
27		Plug	1
28		O-Ring	1
29	76-0890	Assembly (Incl. Ref. #24-25 & 30-32)	1
30		Spring	2
31		Ball	1
32		Valve - Shuttle	1
*	76-0830	Rotor Set (Incl. Ref. #19-21)	1
*	76-0880	Assembly - Commutator (Incl. Ref. #15, 16 & 23)	1
*	76-0800	Kit - Seal (Incl. Ref. #1, 4-7 & 15)	1
*	76-0810	Assembly - Housing (Incl. Ref. #2, 3 & 8-10)	1

\*Not Illustrated

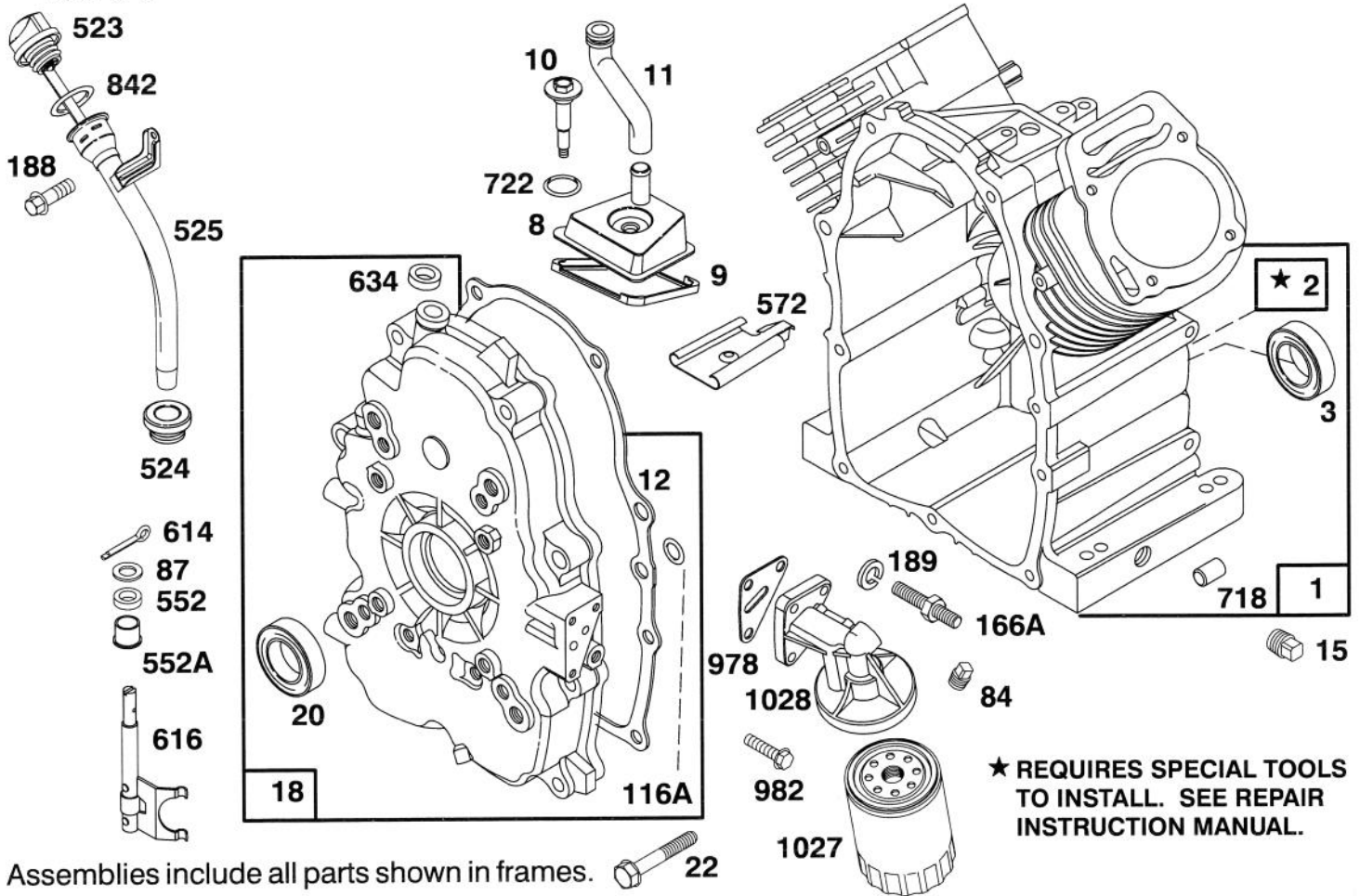


T-0217

## HYDRAULIC LIFT CYLINDER ASSEMBLY NO. 83-7000

Ref. No.	Part No.	Description	No. Used
1	237-78	O-Ring	2
2	43-5260	Barrel w/Clevis & Ports	1
3	32152-10	Nut	1
4		Uniring - Grooved	1
5	70-2780	Piston	1
6		O-Ring	1
7		Poly-Pack	1
8		O-Ring	1

Ref. No.	Part No.	Description	No. Used
9		Back-Up	1
10	70-2770	Head	1
11		Seal - Dust	1
12	43-5220	Ring - Retaining	1
13	43-5230	Shaft with Clevis	1
14	83-7250	Seal Repair Kit (Incl. Ref. #4, 6-9 & 11)	1

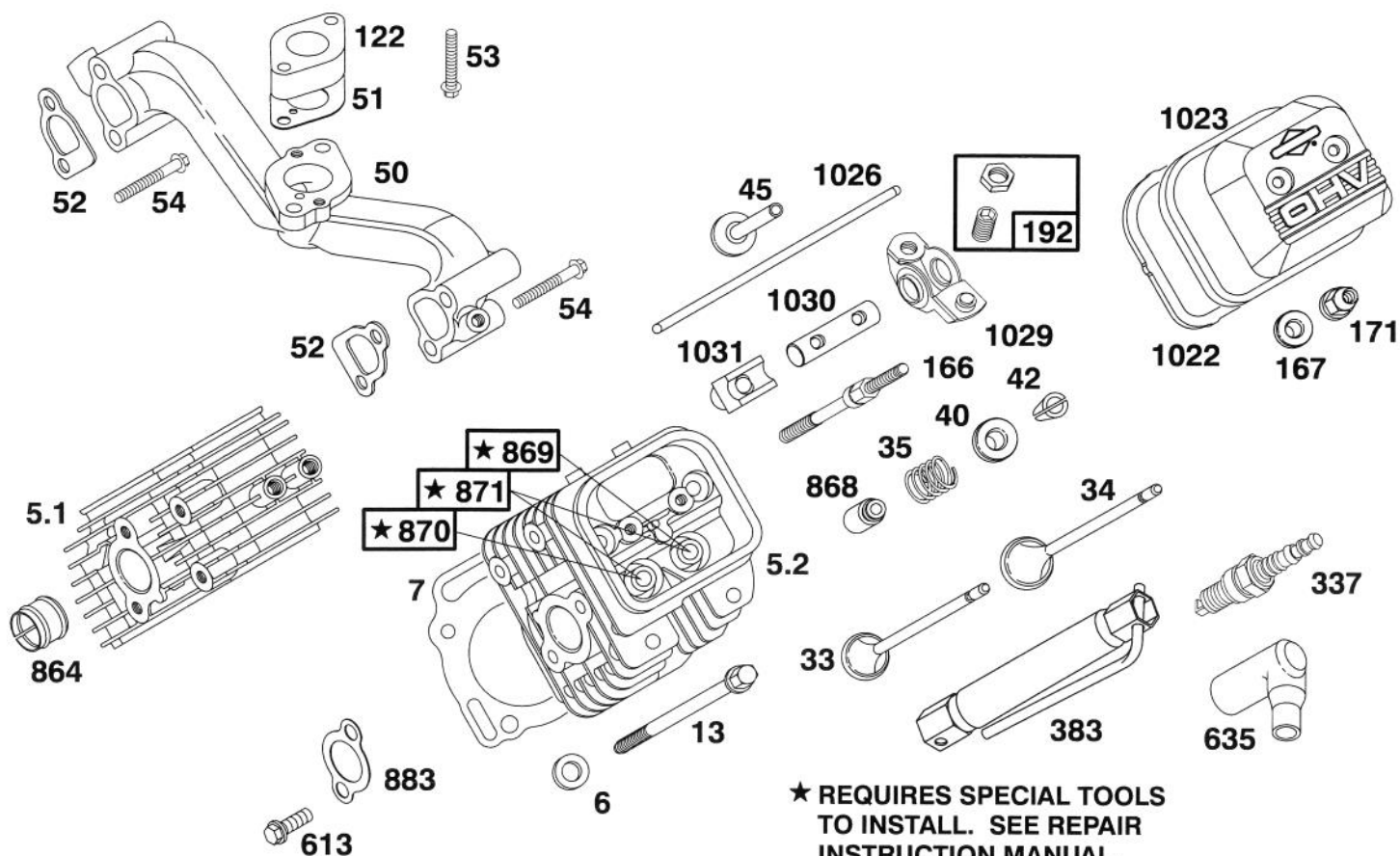


## ENGINE BRIGGS & STRATTON MODEL 303447-0446-01

Ref. No.	Part No.	Description	No. Used
1	807521	Cylinder Assembly	
2	805107	Bearing - Cylinder	
3	805101	Seal - Oil	
8	807795	Breather Assembly	
*9	805379	Gasket - Breather	
10	805751	Screw - Hex.Washer Head	
11	805362	Tube - Breather	
*12	805112	Gasket - Crankcase Cover	
15	805048	Plug - Oil Drain	
18	807628	Cover Assembly - Crankcase	
20	805049	Seal - Oil	
22	805017	Screw - Crankcase Cover	
84	805059	Plug - Pipe	
87	805054	Seal - Governor Shaft	
*116A	805198	O-Ring (Crankcase Cover)	
166A	805073	Stud - Oil Filter Adapter	
188	805247	Screw - Hex. Head	
189	805449	Lockwasher	

Ref. No.	Part No.	Description	No. Used
523	807585	Dipstick	
524	805259	Seal - Filler Tube	
525	807584	Tube - Oil Filler	
552	805412	Bushing - Governor Shaft	
552A	805413	Bushing - Governor Shaft	
572	805197	Baffle - Breather	
614	805417	Pin - Cotter	
616	807596	Fork - Governor	
634	805416	Washer - Governor Shaft	
718	805103	Dowel - Crankcase	
*722	805483	Seal - Breather Screw	
842	805386	O-Ring	
*978	805250	Gasket - Oil Filter Adapter	
982	805030	Screw	
1027	492932	Filter - Oil	
1028	805292	Adapter - Oil Filter	
1029	807557	Arm - Rocker	

\*Included in Gasket Set - Part No. 807989.



Assemblies include all parts shown in frames.

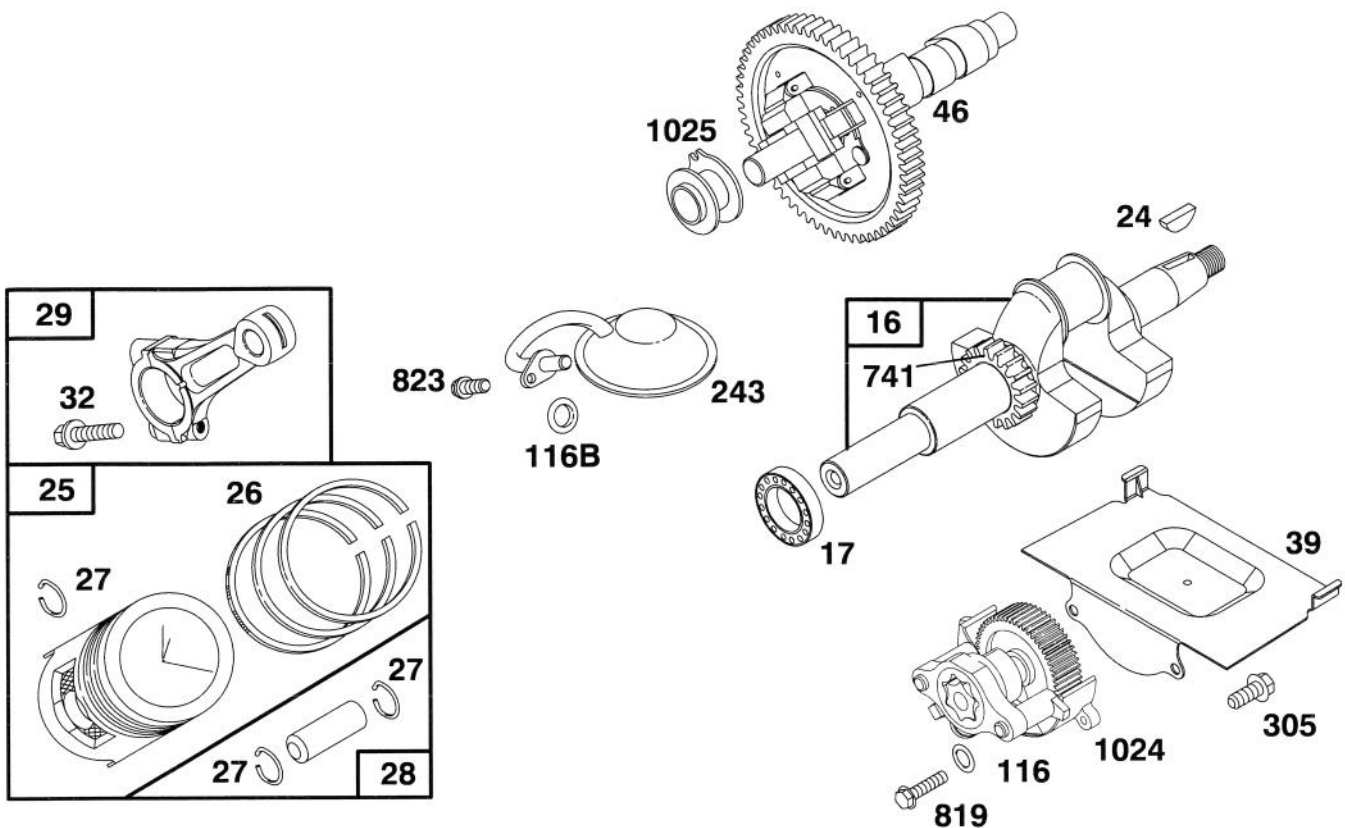
## ENGINE BRIGGS & STRATTON MODEL 303447-0446-01

Ref. No.	Part No.	Description	No. Used
5.1	807987	Head - Cylinder (Cyl. #1)	
5.2	807988	Head - Cylinder (Cyl. #2)	
*6	805193	Washer - Cylinder Head	
†7	807986	Gasket - Cylinder Head	
13	805097	Screw - Cylinder Head	
33	805089	Valve - Exhaust	
34	805090	Valve - Intake	
35	805078	Spring - Valve	
40	805092	Retainer - Valve Spring	
42	805161	Retainer - Valve	
45	805354	Tappet - Valve	
50	805409	Manifold - Intake	
*51	805264	Gasket - Carburetor Mtg.	
†52	805023	Gasket - Intake Manifold	
53	805466	Screw	
54	805006	Screw	
122	805328	Spacer - Carburetor	
166	805343	Stud - Rocker Arm	
†167	805420	Washer - Valve Cover	
*171	805019	Nut - Nylock	
192	807623	Screw - Valve Adjustment (Incl. Jam Nut)	

Ref. No.	Part No.	Description	No. Used
337	496018	Plug - Spark (Champion No. RC14YC)	
383	19374	Wrench - Spark Plug	
613	805158	Screw	
635	805529	Elbow - Spark Plug	
864	805083	Liner - Exhaust Port	
868	805094	Seal - Valve Guide	
869	805085	Seat - Intake Valve	
870	805086	Seat - Exhaust Valve	
871	805084	Guide - Valve	
†*883	805024	Gasket - Exhaust Manifold	
†1022	805028	Gasket - Valve Cover	
1023	805100	Cover - Valve <b>Note:</b> 807665 Cover - Valve Used on Cylinder #1.	
1026	805352	Rod - Push <b>Note:</b> 805617 Rod - Push Used on Exhaust Side Only.	
1029	807557	Arm - Rocker	
1030	805342	Shaft - Rocker Arm	
1031	805341	Support - Rocker Arm	

\*Included in Gasket Set - Part No. 807989.

†Included in Valve Overhaul Kit - Part No. 807990.



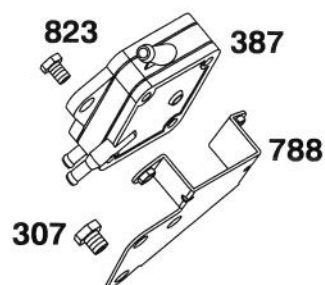
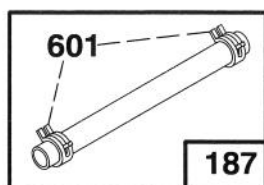
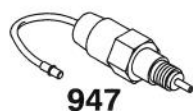
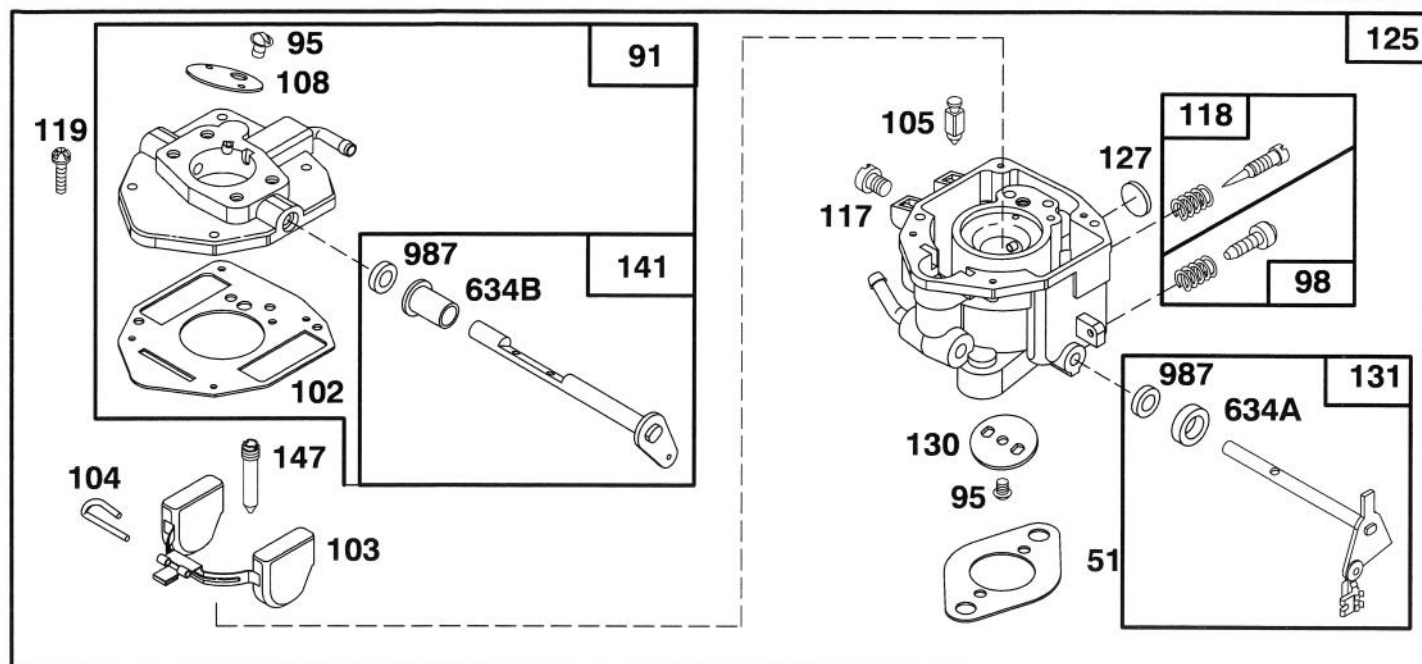
Assemblies include all parts shown in frames.

## ENGINE BRIGGS & STRATTON MODEL 303447-0446-01

Ref. No.	Part No.	Description	No. Used
16	808000	Crankshaft <b>Note:</b> To Replace Crankshaft Timing Gear Key Order Part No. 94196	
17	805213	Bearing - Ball	
24	805016	Key - Flywheel	
25	807619	Piston Assembly (Standard)	
	807807	Piston Assembly .010 O.S.	
	807809	Piston Assembly .020 O.S.	
	807811	Piston Assembly .030 O.S.	
26	807620	Ring Set - Piston (Standard)	
	807808	Ring Set - Piston .010 O.S.	
	807810	Ring Set - Piston .020 O.S.	
	807812	Ring Set - Piston .030 O.S.	

Ref. No.	Part No.	Description	No. Used
27	805099	Lock - Piston Pin	
28	807621	Piston Pin Assembly	
29	807622	Connecting Rod Assembly	
32	805395	Screw - Connecting Rod	
39	805300	Deflector - Oil	
46	807542	Gear - Cam	
*116	805058	O-Ring (Oil Pump)	
*116B	805316	O-Ring (Pick - Up Tube)	
243	807598	Screen - Oil Pump Pick-Up	
305	805406	Screw	
741	805675	Gear - Timing	
819	805057	Screw	
823	805317	Screw - Mounting	
1024	807644	Oil Pump Assembly	
1025	805313	Slider - Governor	

\*Included in Gasket Set - Part No. 807989.



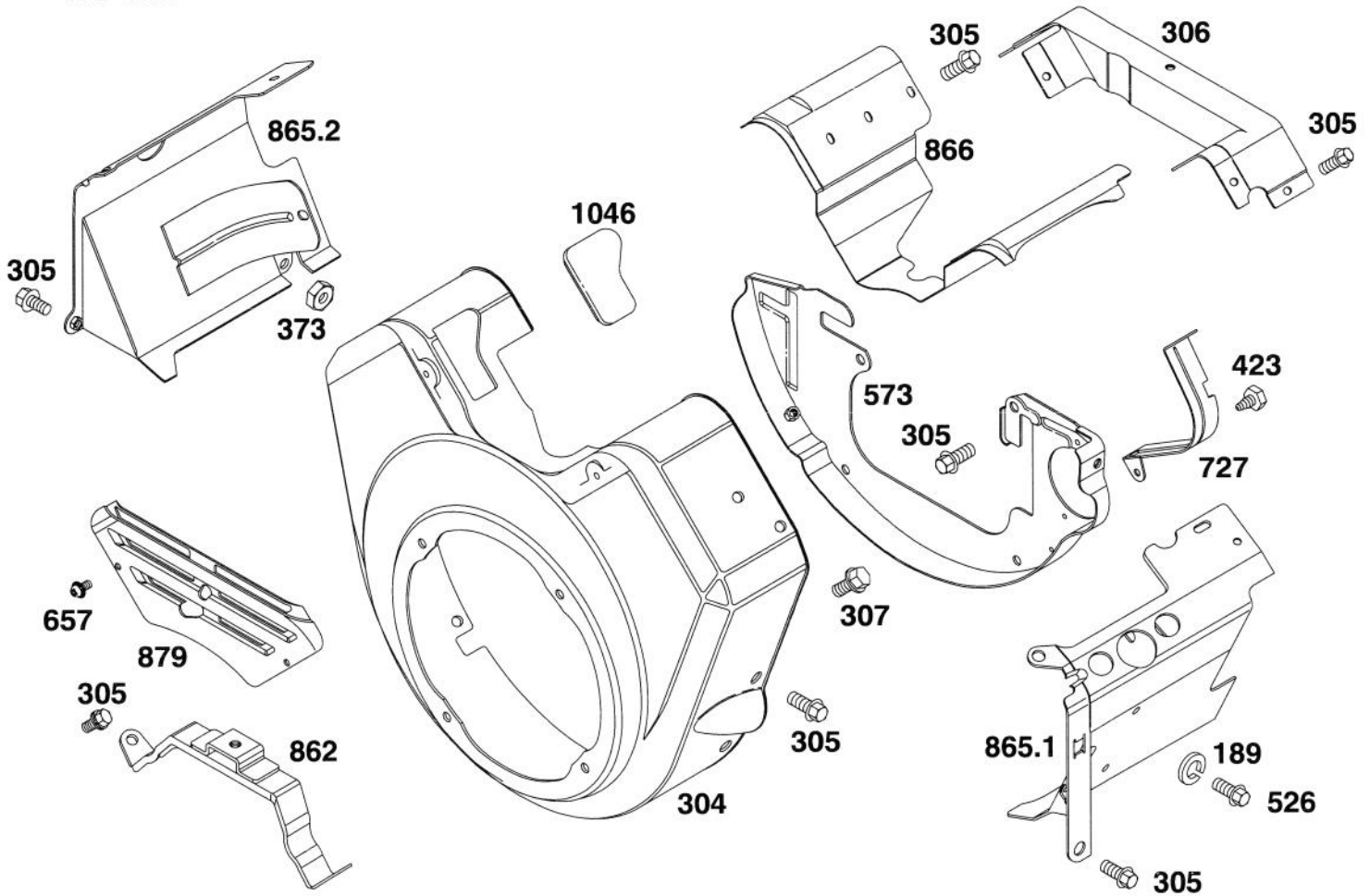
Assemblies include all parts shown in frames.

## ENGINE BRIGGS & STRATTON MODEL 303447-0446-01

Ref. No.	Part No.	Description	No. Used
*51	805264	Gasket - Carburetor Mtg.	
91	807919	Body - Upper Carburetor	
95	805538	Screw - Valve Mtg.	
98	807718	Screw - Throttle Adj.	
*102	805541	Gasket - Intake Elbow	
103	805546	Float Assembly	
*104	805545	Pin - Float Hinge	
*105	805547	Valve - Fuel Inlet	
108	805539	Valve - Choke	
*117	805548	Jet - Main	
*118	807719	Valve - Idle Adjusting Needle	
119	805540	Screw - Upper Body Mtg.	
125	807918	Carburetor Assembly	
*127	805559	Plug - Welch	

Ref. No.	Part No.	Description	No. Used
130	805554	Valve - Throttle	
131	807720	Shaft - Throttle	
141	807722	Shaft - Choke	
*147	805553	Jet - Slow Speed	
187	393815	Hose - Fuel (Cut to Suit)	
307	805025	Screw	
387	491922	Pump - Fuel	
601	93053	Clamp - Hose	
*634A	805557	Collar - Throttle	
*634B	805543	Collar - Choke	
788	807685	Bracket - Fuel Pump	
823	805317	Screw - Mounting	
947	807664	Solenoid	
*987	805544	Seal - Shaft	

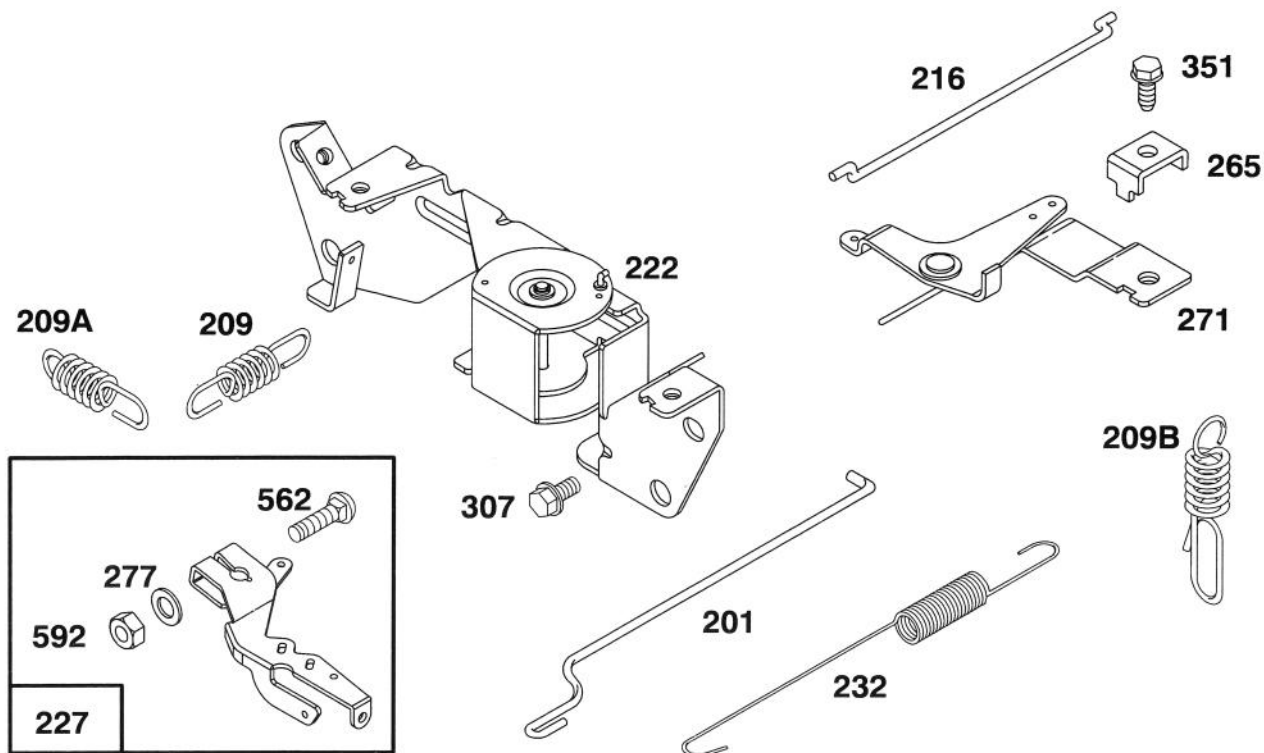
\*Included in Carburetor Overhaul Kit - Part No. 807726.



## ENGINE BRIGGS & STRATTON MODEL 303447-0446-01

Ref. No.	Part No.	Description	No. Used
189	805449	Washer - Lock	
304	807898	Housing - Blower	
305	805406	Screw	
306	807661	Cover - Valley Extension	
307	805025	Screw	
373	805383	Nut - Hex	
423	805260	Screw	
526	805448	Screw - Mounting	
573	807663	Back Plate Assembly	
657	805009	Screw	

Ref. No.	Part No.	Description	No. Used
727	805505	Shield - Starter	
862	807796	Bracket - Air Cleaner	
865.1	807870	Cover - Air Guide (Cyl. #1)	
865.2	807871	Cover - Air Guide (Cyl. #2)	
866	805738	Valley Cover - Air Guide	
879	805369	Cover - Carburetor	
1046	805753	Plug - Blower Housing	

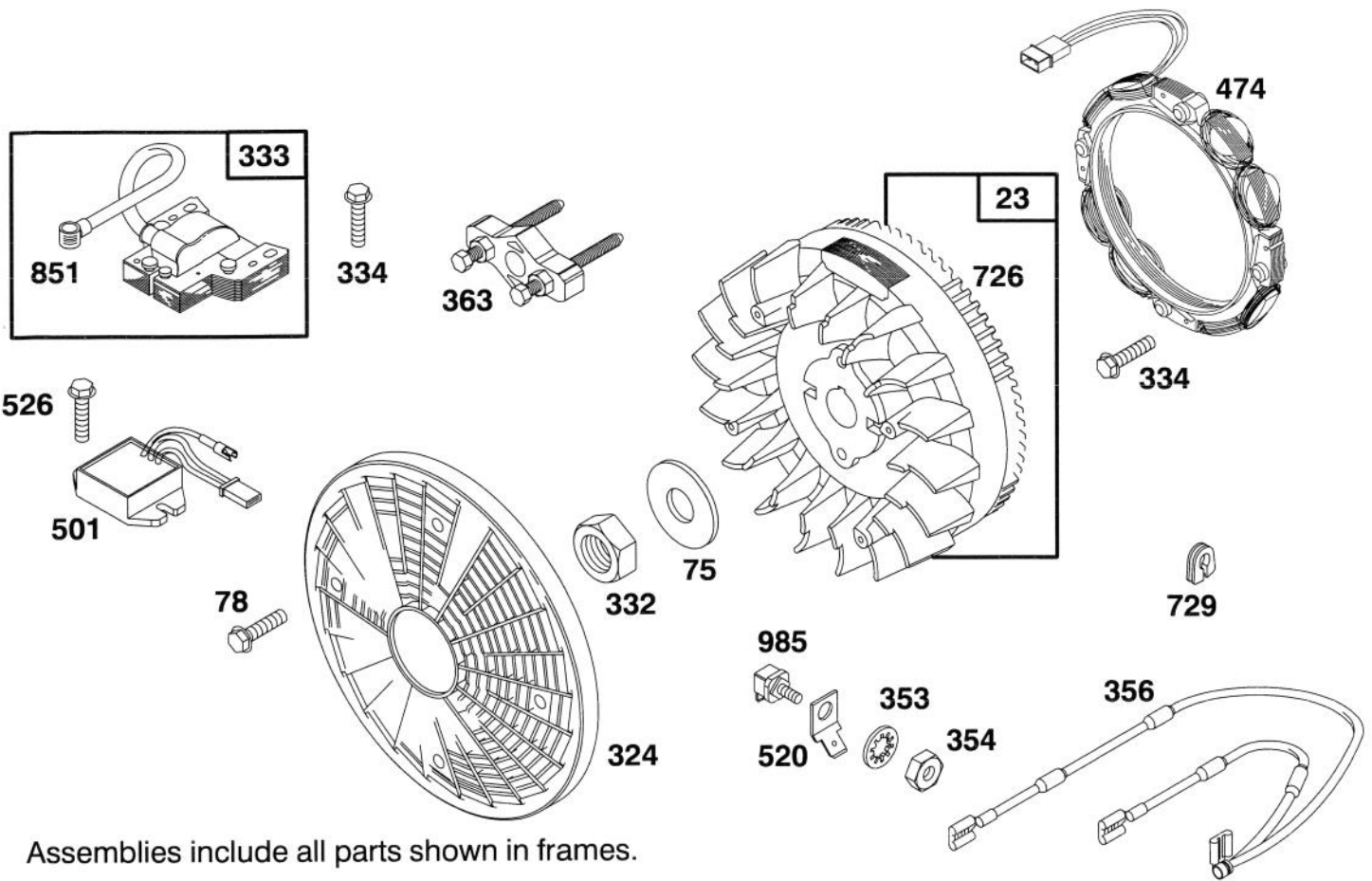


Assemblies include all parts shown in frames.

## ENGINE BRIGGS & STRATTON MODEL 303447-0446-01

Ref. No.	Part No.	Description	No. Used
201	805480	Link – Governor	
209	805463	Spring – Governor	
209A	805453	Spring – Governed Idle	
209B	805450	Spring – Governor	
216	805439	Link – Choke	
222	807610	Bracket – Governor Control	
227	807528	Lever Assembly – Governor	
232	805465	Spring – Governor Link	

Ref. No.	Part No.	Description	No. Used
265	221535	Clamp – Casing	
271	807609	Bracket – Choke Control	
277	805018	Washer	
307	805025	Screw	
351	805169	Screw – Hex. Head	
562	805381	Bolt	
592	805383	Nut – Hex.	

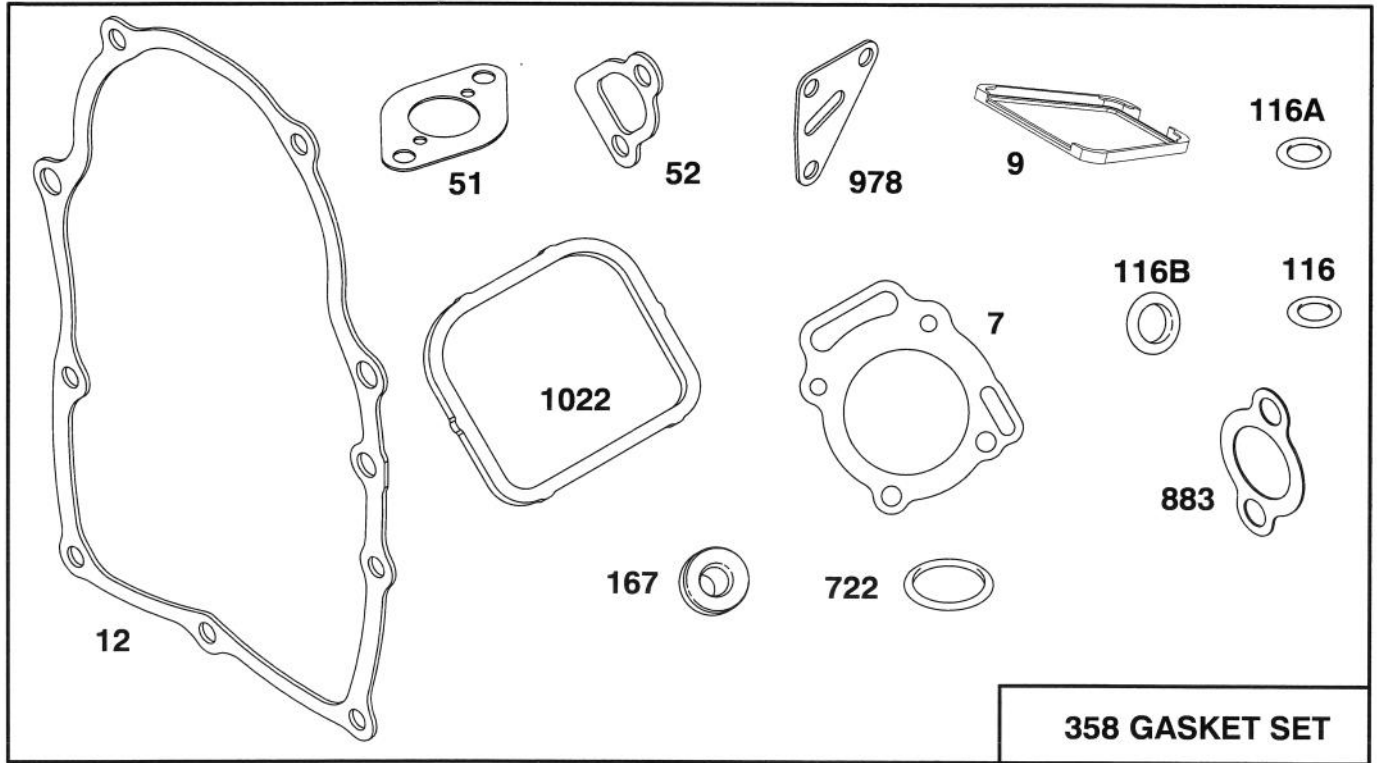


Assemblies include all parts shown in frames.

## ENGINE BRIGGS & STRATTON MODEL 303447-0446-01

Ref. No.	Part No.	Description	No. Used
23	807531	Flywheel - Magneto	
75	805007	Washer - Spring	
78	805447	Screw	
324	808034	Screen - Rotating	
332	805021	Nut - Hex	
333	492341	Armature - Magneto	
334	805407	Screw - Mounting	
353	92791	Washer - Lock (Internal Tooth)	
354	90576	Nut - Hex	

Ref. No.	Part No.	Description	No. Used
356	493972	Wire - Assy.	
363	19203	Puller - Flywheel	
474	393295	Stator - Alternator	
501	394890	Regulator - Alternator	
520	93722	Terminal - Spade	
526	805448	Screw - Mtg.	
726	807805	Gear - Flywheel Ring	
729	805641	Grommet	
851	221798	Terminal - Ignition Cable	
985	398525	Insulator	



Assemblies include all parts shown in frames.

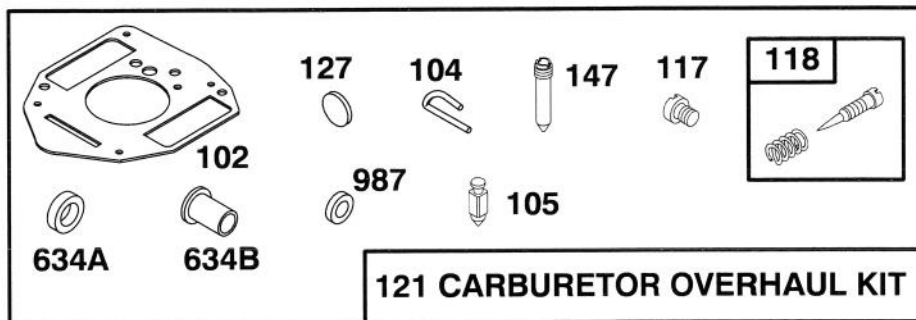
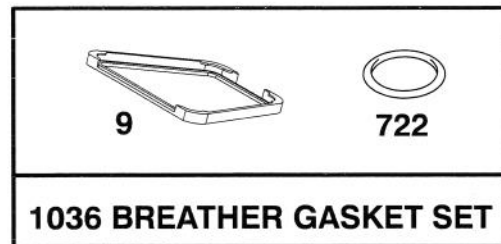
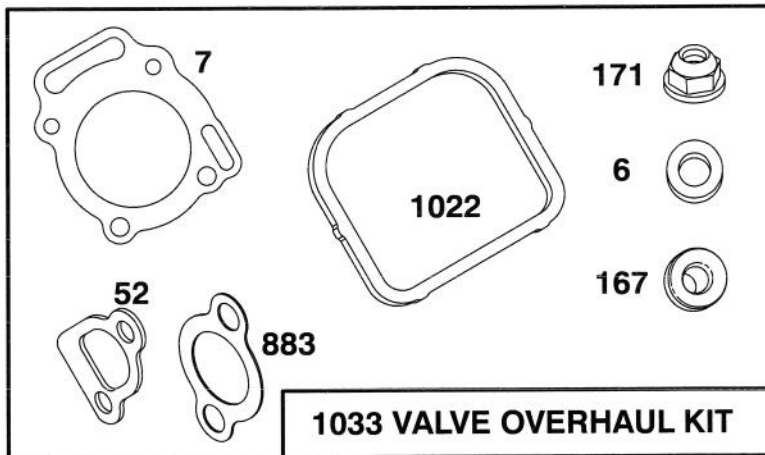
### ENGINE BRIGGS & STRATTON MODEL 303447-0446-01

Ref. No.	Part No.	Description	No. Used
†7	807986	Gasket - Cylinder Head	
*9	805379	Gasket - Breather	
*12	805112	Gasket - Crankcase Cover	
*51	805264	Gasket - Carburetor Mtg.	
*52	805023	Gasket - Intake Manifold	
*116	805058	O-Ring (Oil Pump)	
*116A	805198	O-Ring (Crankcase Cover)	

Ref. No.	Part No.	Description	No. Used
*116B	805316	O-Ring (Pick - Up Tube)	
*†167	805420	Washer - Valve Cover	
358	807989	Gasket Set	
*722	805483	Seal - Breather Screw	
*883	805023	Gasket - Exhaust Manifold	
*978	805250	Gasket - Oil Filter Adapter	
*†1022	805028	Gasket - Valve Cover	

\*Included in Gasket Set - Part No. 807989.

†Included in Valve Overhaul Kit - Part No 807990.



Assemblies include all parts shown in frames.

## ENGINE BRIGGS & STRATTON MODEL 303447-0446-01

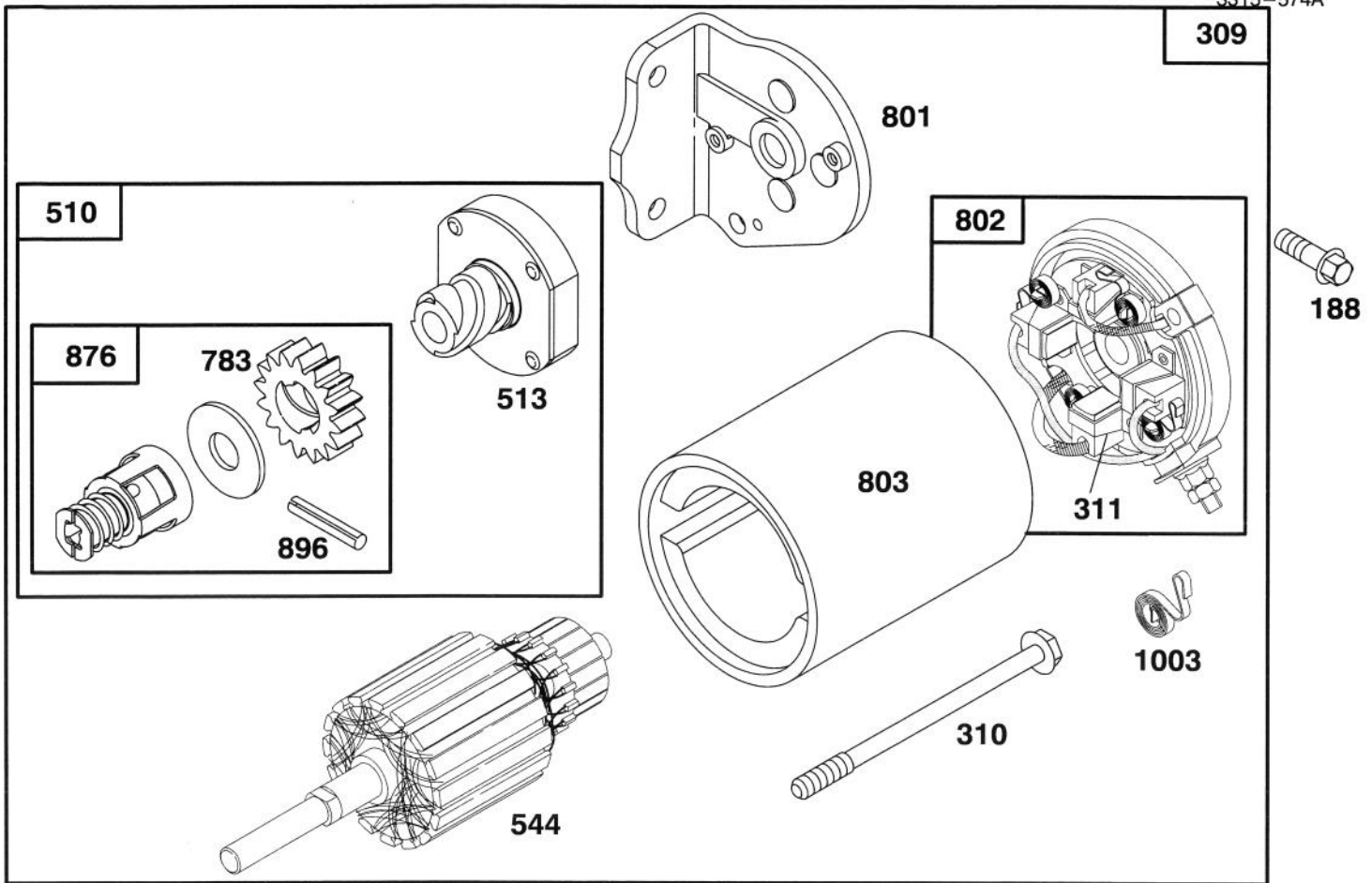
Ref. No.	Part No.	Description	No. Used
‡6	805193	Washer – Cylinder Head	
‡7	807986	Gasket – Cylinder Head	
*9	805379	Gasket – Breather	
†*52	805023	Gasket – Intake Manifold	
†102	805541	Gasket – Intake Elbow	
†104	805545	Pin – Float Hinge	
†105	805547	Valve – Fuel Inlet	
†117	805548	Jet – Main	
†118	807719	Valve – Idle Adjusting	
121	807726	Carburetor Overhaul Kit	
†127	805559	Plug – Welch	

Ref. No.	Part No.	Description	No. Used
†147	805553	Jet – Slow Speed	
‡167	805420	Washer – Valve Cover	
‡171	805019	Nut – Nylock	
†634A	805557	Collar – Throttle	
†634B	805543	Collar – Choke	
722	805483	Seal – Breather Screw	
†*883	805024	Gasket – Exhaust Manifold	
†987	805544	Seal – Shaft	
*‡1022	805028	Gasket – Valve Cover	
1033	807990	Overhaul Kit – Valve	
1036	807688	Gasket Set – Breather	

\*Included in Gasket Set – Part No. 807989.

†Included in Carburetor Overhaul Kit – Part No. 807726.

‡Included in Valve Overhaul Kit – Part No. 807990.



Assemblies include all parts shown in frames.

## ENGINE BRIGGS & STRATTON MODEL 303447-0446-01

Ref. No.	Part No.	Description	No. Used
188	805247	Screw - Hex. Head	
309	399169	Motor - Starting	
310	94169	Bolt	
311	490311	Brush Assembly	
510	495878	Drive Assembly	
513	398003	Clutch Assembly	
544	490309	Armature Assembly	

Ref. No.	Part No.	Description	No. Used
783	280104	Gear	
801	394856	Cap Assy. - Drive	
802	490310	Cap Assy. - Commutator	
803	399172	Housing Assembly	
876	495877	Gear Kit	
896	94288	Roll Pin	
1003	490316	Brush Spring Set	

# INTERNATIONAL DECAL CROSS REFERENCE

## JAPANESE DECAL KIT NO. 88-8550

DESCRIPTION	LOCATION	PART NUMBER	
		ENGLISH	JAPANESE
Decal Operating Instructions	Top Panel Assembly	85-8810	92-1850
Decal Controls	Right Fender Assembly	85-8820	92-1855
Decal Console	Console Panel	85-8830	92-1860
Decal Warning	Left Fender Assembly	85-8840	92-1865
Decal Service	Under Seat Support	85-8850	92-1870
Decal Shields Missing	Top Panel Assembly & Main Frame	85-8880	92-1875
Decal Eccentric Bolt	Switch Arm Assembly	85-8860	92-1880
Decal Fan Warning	Cooler Mounting Assembly	77-3100	84-6760
Plate Hot Surface	Muffler Shield	80-8290	83-6140
Manual Engine	In Product Carton	N/A	83-2470

## SWEDISH DECAL KIT NO. 88-8590

DESCRIPTION	LOCATION	PART NUMBER	
		ENGLISH	SWEDISH
Decal Operating Instructions	Top Panel Assembly	85-8810	92-1854
Decal Controls	Right Fender Assembly	85-8820	92-1859
Decal Console	Console Panel	85-8830	92-1864
Decal Warning	Left Fender Assembly	85-8840	92-1869
Decal Service	Under Seat Support	85-8850	92-1874
Decal Shields Missing	Top Panel Assembly & Main Frame	85-8880	92-1879
Decal Eccentric Bolt	Switch Arm Assembly	85-8860	92-1884
Decal Fan Warning	Cooler Mounting Assembly	77-3100	84-6790
Plate Hot Surface	Muffler Shield	80-8290	83-5470
Manual Engine	In Product Carton	N/A	83-2660

# INTERNATIONAL DECAL CROSS REFERENCE (Cont.)

## GERMAN DECAL KIT NO. 88-8580

DESCRIPTION	LOCATION	PART NUMBER	
		ENGLISH	GERMAN
Decal Operating Instructions	Top Panel Assembly	85-8810	92-1853
Decal Controls	Right Fender Assembly	85-8820	92-1858
Decal Console	Console Panel	85-8830	92-1863
Decal Warning	Left Fender Assembly	85-8840	92-1868
Decal Service	Under Seat Support	85-8850	92-1873
Decal Shields Missing	Top Panel Assembly & Main Frame	85-8880	92-1878
Decal Eccentric Bolt	Switch Arm Assembly	85-8860	92-1883
Decal Fan Warning	Cooler Mounting Assembly	77-3100	84-6740
Plate Hot Surface	Muffler Shield	80-8290	83-5760
Manual Engine	In Product Carton	N/A	83-2660

## SPANISH DECAL KIT NO. 88-8570

DESCRIPTION	LOCATION	PART NUMBER	
		ENGLISH	SPANISH
Decal Operating Instructions	Top Panel Assembly	85-8810	92-1852
Decal Controls	Right Fender Assembly	85-8820	92-1857
Decal Console	Console Panel	85-8830	92-1862
Decal Warning	Left Fender Assembly	85-8840	92-1867
Decal Service	Under Seat Support	85-8850	92-1872
Decal Shields Missing	Top Panel Assembly & Main Frame	85-8880	92-1877
Decal Eccentric Bolt	Switch Arm Assembly	85-8860	92-1882
Decal Fan Warning	Cooler Mounting Assembly	77-3100	84-6780
Plate Hot Surface	Muffler Shield	80-8290	83-5940
Manual Engine	In Product Carton	N/A	83-2670

**INTERNATIONAL DECAL CROSS REFERENCE (Cont.)****FRENCH DECAL KIT NO. 88-8560**

DESCRIPTION	LOCATION	PART NUMBER	
		ENGLISH	FRENCH
Decal Operating Instructions	Top Panel Assembly	85-8810	92-1851
Decal Controls	Right Fender Assembly	85-8820	92-1856
Decal Console	Console Panel	85-8830	92-1861
Decal Warning	Left Fender Assembly	85-8840	92-1866
Decal Service	Under Seat Support	85-8850	92-1871
Decal Shields Missing	Top Panel Assembly & Main Frame	85-8880	92-1876
Decal Eccentric Bolt	Switch Arm Assembly	85-8860	92-1881
Decal Fan Warning	Cooler Mounting Assembly	77-3100	84-6730
Plate Hot Surface	Muffler Shield	80-8290	83-6240
Manual Engine	In Product Carton	N/A	83-2660

# TORO PART NUMBER INDEX

3315-574A

Part No.	Description	Pg. Ref. No. No. Qty.	Part No.	Description	Pg. Ref. No. No. Qty.
3-6498	Washer - Thrust	13 5 1	47-2964	Hose - Fuel	10 25 1
10-6830	Stud - Drive	20 8 8	48-1800	Cylinder Block Kit	15 5 1
10-6830	Stud - Drive	4 27 4	48-7620	Screw - Cap Hex. Hd.	11 7 3
14-7509	Fender Assembly L.H.	1 16 1	49-2040	Screw - Hex. Flange Hd.	13 6 3
14-7579	Cooler Mount Assembly	16 25 1	49-8510	Kit - Charge Relief	15 * 1
17-4710	Hub	4 18 1	49-8520	Kit - Implement Relief	15 * 1
17-4710	Hub - Wheel	20 9 2	51-0780	Slide - Seat Adjust	7 8 1
18-6290	Shaft - Axle	4 7 1	51-0790	Slide - Seat Adjust	7 17 1
18-6320	Washer	4 2 3	53-6380	Washer	20 22 1
18-6380	Bolt - Adjustment	6 17 2	56-7720	Rod - Battery Hold-Down	10 12 2
18-6380	Pin - Adjusting	13 9 1	56-7976	Clamp - Tube	4 36 1
21-2480	Hose - Fuel	10 13 1	56-7981	Sleeve - Protective	20 38 1
22-8330	Plug	18 1 2	61-2710	Fitting - Hydraulic 90°	14 32 1
22-8340	Spring	18 3 2	61-3770	Hydraulic Filter Head Assy.	16 15 1
22-8350	Ball	18 4 2	63-8360	Key - Ignition	8 8 1
22-8360	Pin - Cam	18 6 2	63-8410	Washer - Flat	10 19 4
22-8370	Seat-Check Valve	18 5 2	63-8410	Washer - Flat	16 20 3
22-8380	Retainer - Spring	18 10 2	66-2950	Hour Meter Assembly	8 10 1
22-8410	Spring	18 11 1	67-8050	Bearing - Needle	15 22 1
22-8420	Spool	18 8 1	67-8060	Seal - Lip	15 23 1
22-8480	Ring - Retaining, Spool	18 13 1	69-9760	Plate - Cover	4 37 1
22-8490	Ring - Retaining	18 14 1	70-2770	Head	23 10 1
22-8500	O-Ring	18 9 2	70-2780	Piston	23 5 1
23-3030	Spacer	18 12 1	70-8631	Cap - Fuel	10 1 1
23-8910	Fitting - Hydraulic 90°	16 9 2	72-4790	Hold-Down - Battery	10 8 1
23-9740	Element - Hydraulic Filter	16 18 1	74-0720	Tube - Manual	7 4 1
25-2380	Plate - Thrust	15 39 1	74-9100	Pad - Forward	12 16 1
25-2400	Gasket	15 43 1	74-9110	Pad - Reverse	12 4 1
25-2430	Pin - Straight	15 41 1	75-0540	Teather	16 2 1
25-2450	Swash/Plate	15 37 1	75-5470	Spacer	13 18 1
25-2460	Plug	15 14 2	75-9830	Hydraulic Motor Assembly	4 24 1
25-2470	Kit - Shim Pack	15 16 2	75-9831	Hydraulic Motor Assy. L.H.	20 6 1
25-2480	Spring - Charge Relief	15 32 1	75-9840	Hydraulic Motor Assy. R.H.	20 30 1
25-2490	Ball - Check Valve	15 47 2	76-0800	Kit - Seal	21 * 1
25-2510	Washer	15 11 2	76-0800	Kit - Seal	22 * 1
25-2530	Pin - Straight	15 26 1	76-0800	Kit - Seal	5 * 1
25-2570	Spring - Relief Valve	15 17 1	76-0810	Assembly - Housing	21 * 1
25-2630	Ring	15 3 1	76-0810	Assembly - Housing	22 * 1
25-2640	Spring - Check Valve	15 48 2	76-0810	Assembly - Housing	5 * 1
25-2650	Plug - Check Valve	15 50 2	76-0820	Link - Drive	21 13 7
25-2680	Gerotor Assembly	15 25 1	76-0820	Link - Drive	22 13 1
25-2690	Housing - Charge Pump	15 21 1	76-0830	Rotor Set	21 * 1
25-3180	Kit - Check Valve	15 * 1	76-0830	Rotor Set	22 * 1
25-3210	Seal - Lip	15 10 2	76-0840	Manifold	21 22 1
26-3790	Nut - Lock	20 14 2	76-0840	Manifold	22 22 1
26-3790	Nut - Lock	4 17 1	76-0840	Manifold	5 22 1
27-6600	Spacer - Coupler	14 13 8	76-0850	Bearing - Thrust	21 12 1
28-4210	Solenoid - Starter	1 23 1	76-0850	Bearing - Thrust	22 12 1
29-6163	Switch - Neutral	13 20 1	76-0850	Bearing - Thrust	5 12 1
33-1300	Element Assembly	3 6 1	76-0860	Shaft - Coupling	21 11 1
33-1310	Baffle	3 5 1	76-0860	Shaft - Coupling	22 11 1
33-1320	Cup	3 4 1	76-0860	Shaft - Coupling	5 11 1
33-1330	Nut Assembly	3 3 1	76-0870	Plate - Wear	21 18 1
33-1340	Clamp Assembly	3 2 1	76-0870	Plate - Wear	22 18 1
33-1350	Band Assembly	3 1 2	76-0870	Plate - Wear	5 18 1
38-3400	Guard - Rubber	11 18 1	76-0880	Assembly - Commutator	21 * 1
39-9600	Clamp - Ammeter	8 16 1	76-0880	Assembly - Commutator	22 * 1
43-1950	Lift Valve Assembly	17 20 1	76-0880	Assembly - Commutator	5 * 1
43-5220	Ring - Retaining	23 12 1	76-0890	Assembly	22 29 1
43-5230	Shaft with Clevis	23 13 1	76-0930	Link - Drive	5 13 7
43-5260	Barrel w/Clevis & Ports	23 2 1	76-0940	Assembly - Cover, End	21 24 1
46-4810	Rim	4 5 1	76-0940	Assembly - Cover, End	5 24 1
46-4810	Rim	20 11 2	76-0950	Rotor Set	5 * 1
46-6890	Air Cleaner Assembly	1 14 1	76-1020	Screw - Cap, Hex. Hd.	21 14 1
46-7510	Hood - Intake	3 10 1	76-1030	Screw - Cap, Hex. Hd.	5 14 1
46-8400	Bearing - Needle	15 42 1	76-1040	Screw - Cap, Hex. Hd.	22 14 7
47-2964	Hose - Fuel	11 19 1	76-1401	Seat	7 19 1

\*Not Illustrated

# TORO PART NUMBER INDEX (Cont.)

Part No.	Description	Pg. Ref. No. No. Qty.	Part No.	Description	Pg. Ref. No. No. Qty.
76-1420	Wheel - Steering	6 1 1	85-8950	Flange - Bearing	4 9 1
76-8640	Stud - Traction	13 14 1	85-8960	Spacer	12 3 1
77-3100	Decal - Danger	16 38 2	85-8970	Shield - Chain	6 15 1
80-2060	Muffler	11 14 1	85-9000	Tank - Fuel	10 2 1
80-2110	Cable - Solenoid-Starter	9 2 1	85-9010	Boot - Steering	10 21 1
80-2120	Wire Harness - Main	9 1 1	85-9020	Key - Square	14 17 1
80-2120	Wire Harness Assembly	8 12 1	85-9030	Spring - Extension	13 10 1
80-2150	Pad - Litterbox	2 32 1	85-9040	Panel - Rear L.H.	1 24 1
80-8290	Plate - Hot Surface	11 10 1	85-9050	Panel - R.H. Rear	1 2 1
80-8650	Coupler - Rubber	14 14 2	85-9070	Console Assembly	8 2 1
83-0020	Ignition Switch Assembly	8 5 1	85-9110	Reservoir - Hydraulic	16 40 1
83-0820	Ammeter Assembly	8 9 1	85-9120	Spacer	6 10 3
83-1031	Mount - Engine	11 31 4	85-9120	Spacer	13 17 1
83-1320	Filter - Fuel	10 24 1	85-9140	Hose - Fuel	10 17 1
83-1390	Fitting - Fuel Shut-Off	10 15 1	85-9150	Plate - Switch	13 19 1
83-2220	Deflector - Exhaust	11 13 1	85-9160	Spacer	20 2 1
83-2230	Screw	11 12 4	85-9170	Pin - Cylinder	20 5 1
83-2420	Cable - Positive	9 3 1	85-9180	Sprocket	6 20 1
83-2420	Cable - Positive	11 25 1	85-9190	Plate - Control	2 33 1
83-7000	Cylinder Assembly	20 3 1	85-9200	Joint - Universal	6 23 1
83-7250	Seal Repair Kit	23 14 1	85-9210	Shaft - Steering Lower	6 22 1
83-7260	Cone - Charge Relief	15 33 1	85-9220	Shaft - Steering Upper	6 27 1
83-7260	Cone - Relief Valve	15 18 1	85-9230	Support - Seat	7 9 1
85-0290	Spacer - Seat Support	7 10 2	85-9310	Control - Throttle & Choke	2 31 2
85-0380	Tube - Hydraulic	17 19 1	85-9320	Rod - Seat Prop	7 15 1
85-0380	Tube - Hydraulic	20 33 1	85-9360	Tube - Hydraulic	17 30 1
85-7600	Frame Assembly	1 28 1	85-9360	Tube - Hydraulic	4 34 1
85-7610	Hose - Hydraulic	16 11 1	85-9370	Tube - Hydraulic	17 34 1
85-7680	Hose - Hydraulic	16 17 1	85-9370	Tube - Hydraulic	4 35 1
85-7680	Hose - Hydraulic	14 30 1	85-9390	Tube - Hydraulic	20 20 1
85-7760	Tube - Hydraulic	20 21 1	85-9390	Tube - Hydraulic	17 24 1
85-7760	Tube - Hydraulic	17 22 1	85-9400	Tube - Hydraulic	20 31 1
85-8000	Engine Assembly	11 46 1	85-9400	Tube - Hydraulic	17 32 1
85-8030	Chain	6 19 1	85-9410	Tube - Hydraulic	17 31 1
85-8060	Fork - Steering	4 3 1	85-9410	Tube - Hydraulic	20 32 1
85-8240	Hydraulic Pump Assembly	14 8 1	85-9420	Hydraulic Tube Assembly	14 5 1
85-8290	Tire	20 10 2	85-9420	Tube - Hydraulic	17 23 1
85-8290	Tire	4 16 1	85-9450	Hose - Hydraulic	14 36 1
85-8300	Lever - Pump	13 2 1	85-9460	Cooler - Oil	16 30 1
85-8320	Plate - Pump	13 7 1	85-9470	Hydraulic Manifold Assembly	17 21 1
85-8360	Seal - Cover	11 3 1	85-9500	Hose - Air Cleaner	1 12 1
85-8370	Cover - Air Cleaner	11 2 1	85-9510	Screen - Filler	16 4 1
85-8430	Base - Air Cleaner	11 48 1	85-9530	Fender - R.H.	1 7 1
85-8450	Rod - Control	12 9 1	85-9550	Clamp - Rubber	16 35 2
85-8460	Switch Arm Assembly	13 12 1	85-9560	Fan	14 28 1
85-8490	Panel - Front R.H.	2 29 1	85-9570	Hose - Hydraulic	17 15 1
85-8570	Shroud - Lower	16 24 1	85-9570	Hose - Hydraulic	20 28 1
85-8600	Support - Engine	11 33 1	85-9580	Hose - Hydraulic	17 16 1
85-8640	Base - Engine	11 38 1	85-9580	Hose - Hydraulic	20 24 1
85-8670	Hub - Fan	14 27 1	85-9590	Hose - Hydraulic	14 25 1
85-8700	Hub - Pump	14 19 1	85-9590	Hose - Hydraulic	16 28 1
85-8730	Hub - Engine	14 18 1	85-9600	Hose - Hydraulic	17 18 1
85-8770	Coupling	14 16 1	85-9600	Hose - Hydraulic	14 21 1
85-8780	Tread - Floor R.H.	2 * 1	85-9610	Hose - Hydraulic	14 4 1
85-8790	Tread - Floor L.H.	2 38 1	85-9620	Hose - Hydraulic	14 1 1
85-8800	Decal - Sand Pro 5000	2 34 2	85-9630	Hose - Hydraulic	4 23 1
85-8810	Decal - Operating	2 37 1	85-9640	Hose - Hydraulic	4 22 1
85-8820	Decal - Control	1 6 1	85-9660	Plate - Seat	7 5 1
85-8830	Decal - Console	8 21 1	85-9670	Nut - T	16 34 2
85-8840	Decal - Warning	1 11 1	85-9680	Panel - Front L.H.	1 27 1
85-8850	Decal - Service	7 7 1	85-9720	Fitting - Hydraulic Orificed	17 35 1
85-8860	Decal - Eccentric Bolt	13 22 1	86-4870	Reservoir Cap Assembly	16 3 1
85-8880	Decal - Shield Missing	2 36 3	88-8110	Screen Assembly R.H.	16 33 1
85-8890	Panel - Console	8 18 1	88-8120	Screen Assembly L.H.	16 31 1
85-8900	Lever - Lift Valve	17 6 1	88-8130	Top Panel Assembly	2 30 1
85-8930	Retainer - Boot	10 22 1	88-8140	Shaft - Pump	15 6 1
85-8940	Flange - Bearing Lube	4 11 1	88-8150	Cap - Pump End	15 45 1

\*Not Illustrated

# TORO PART NUMBER INDEX (Cont.)

3315-574A

Part No.	Description	Pg. Ref.		Part No.	Description	Pg. Ref.	
		No.	Qty.			No.	Qty.
88-8160	Plate - Valve	15	40 1	240-3	Grommet	1	1 1
88-8170	Kit - Housing	15	8 1	240-11	Grommet	16	19 3
88-8180	Shaft - Trunion	15	28 1	240-11	Grommet	10	20 4
88-8190	Bearing - Journal	15	30 1	242-50	Nut - Lock	20	12 8
88-8200	Shaft - Trunion	15	12 1	242-50	Nut - Lug	4	6 4
88-8210	Plug Assembly	15	19 1	2410-73	Retainer - Teather	16	1 1
88-8220	Valve - By-Pass	15	4 1	2412-34	Clamp - Hose	16	10 3
88-8230	Seal - Lip	15	29 1	2412-34	Clamp - Hose	14	31 1
88-8240	Pin - Tilt Lock	6	4 1	2412-36	Clamp - Hose	16	7 1
88-8280	Lever - Steering Adjust	6	6 1	2412-36	Clamp - Hose	10	16 2
88-8290	Steering Column Assembly	6	25 1	2412-36	Clamp - Hose	14	35 1
88-8330	Cable - Engine Ground	9	4 1	2412-92	Clamp - Hose	1	13 1
88-8330	Cable - Negative	11	21 1	2412-93	Clamp - R	10	3 2
88-8340	Trim - Panel	2	35 1	2412-108	Clamp - Hose	10	14 3
88-8350	Tab - Bearing	4	39 1	2412-108	Clamp - Hose	11	17 1
88-8380	Muffler Shield Assembly	11	11 1	2412-109	Clip - J	10	23 1
88-8390	Cover - Cable	11	22 1	2412-133	Clamp - R	7	1 2
88-8480	Bracket - Pivot	17	10 1	2412-138	Clamp - R	17	37 2
88-8490	Decal - Infield Pro 5000	2	* 2	251-8	Bearing - Ball	15	35 1
88-8510	Dowel	6	29 2	251-259	Bearing	13	16 2
88-8520	Block - Lock Lower	6	30 1	251-352	Bearing Assembly	4	10 1
88-8530	Block - Lock Upper	6	8 1	251-352	Screw - Set	4	14 2
92-1678	Battery	10	9 1	252-82	Bearing - Needle	15	9 1
92-2340	Cover	11	53 1	254-61	Cup - Bearing	4	30 2
92-2343	Pedal Assembly	12	15 1	254-70	Cone - Bearing	4	29 2
92-2344	Trunnion	12	11 1	256-113	Bushing - Flange	13	11 2
92-2348	Hydraulic Tube Assembly	14	3 1	256-185	Bushing - Sleeve	6	26 1
92-2348	Tube - Hydraulic	17	33 1	256-219	Bushing - Flange	12	2 2
92-2349	Tube - Hydraulic	17	2 1	256-287	Bushing - Sleeve	6	21 2
92-2349	Tube - Hydraulic	16	37 1	2710-11	Link - Connecting	6	18 2
218-461	Nut - Lock	8	7 1	2710-20	Link - Offset	17	38 1
218-594	Fuse - 20 Amp	8	11 2	285-17	Plug - Pipe	15	1 6
232-34	Screw - Cap Hex. Hd.	20	23 1	302-5	Fitting - Grease	4	12 1
232-35	Valve - Stem	20	13 2	302-60	Fitting - Grease	13	13 1
232-35	Valve - Stem	4	15 1	302-60	Fitting - Grease	4	31 1
233-39	Handle	6	3 1	321-3	Screw - Cap Hex. Hd.	8	1 4
233-39	Handle	17	7 1	321-3	Screw - Cap Hex. Hd.	10	11 2
237-21	Seal-O-Ring	17	14 2	321-3	Screw - Cap Hex. Hd.	16	14 6
237-21	Seal-O-Ring	20	27 2	321-3	Screw - Cap Hex. Hd.	1	18 2
237-22	O-Ring	15	2 1	321-10	Screw - Cap Hex. Hd.	4	38 1
237-22	Seal - O-Ring	14	24 2	321-23	Screw - Cap Hex. Hd.	17	1 3
237-22	Seal - O-Ring	16	29 2	322-1	Screw - Cap Hex. Hd.	1	15 4
237-22	Seal - O-Ring	20	34 1	322-2	Screw - Cap Hex. Hd.	7	3 10
237-22	Seal-O-Ring	17	3 3	322-2	Screw - Cap Hex. Hd.	1	9 2
237-30	O-Ring	15	44 2	322-2	Screw - Cap Hex. Hd.	16	22 4
237-30	Seal - O-Ring	14	2 4	322-3	Screw - Cap Hex. Hd.	6	14 3
237-30	Seal - O-Ring	4	21 4	322-3	Screw - Cap Hex. Hd.	17	28 2
237-30	Seal-O-Ring	20	19 4	322-4	Screw - Cap Hex. Hd.	14	15 8
237-30	Seal-O-Ring	17	27 8	322-4	Screw - Cap Hex. Hd.	15	24 4
237-42	O-Ring	18	2 2	322-4	Screw - Cap Hex. Hd.	11	29 8
237-42	Seal - O-Ring	14	22 2	322-5	Screw - Cap Hex. Hd.	6	11 3
237-42	Seal - O-Ring	20	36 1	322-8	Screw - Cap Hex. Hd.	13	15 1
237-42	Seal-O-Ring	17	5 2	322-9	Screw - Cap Hex. Hd.	11	36 4
237-78	O-Ring	23	1 2	322-14	Screw - Cap Hex. Hd.	12	1 1
237-78	Seal-O-Ring	17	12 2	322-43	Screw - Cap Hex. Hd.	6	5 1
237-78	Seal-O-Ring	20	25 2	323-5	Screw - Cap Hex. Hd.	10	18 4
237-79	Seal - O-Ring	16	5 4	323-5	Screw - Cap Hex. Hd.	16	21 3
237-79	Seal - O-Ring	14	7 3	323-9	Screw - Cap Hex. Hd.	7	12 2
237-79	Seal-O-Ring	17	25 8	323-10	Screw - Cap Hex. Hd.	13	1 1
237-80	O-Ring	15	20 1	323-10	Screw - Cap Hex. Hd.	11	35 2
237-80	Seal - O-Ring	4	19 2	323-11	Screw - Cap Hex. Hd.	20	4 1
237-80	Seal - O-Ring	14	33 1	323-11	Screw - Cap Hex. Hd.	11	37 2
237-80	Seal-O-Ring	20	17 4	323-11	Screw - Cap Hex. Hd.	15	46 4
237-86	O-Ring	15	15 4	323-29	Screw - Cap Hex. Hd.	4	13 3
237-95	O-Ring	15	27 1	323-33	Screw - Cap Hex. Hd.	11	34 4
237-143	Grommet	10	5 2	325-9	Screw - Cap Hex. Hd.	20	15 8
237-146	Seal - O-Ring	16	8 3	3210-2	Screw - Cap Hex. Hd.	11	54 2

\*Not Illustrated

# TORO PART NUMBER INDEX (Cont.)

Part No.	Description	Pg. No.	Ref. No.	Qty.	Part No.	Description	Pg. No.	Ref. No.	Qty.
3217-5	Nut - Hex.	10	10	2	3296-9	Nut - Lock	13	21	2
3217-25	Nut - Hex	8	15	2	3296-23	Nut - Lock	14	10	2
3218-2	Nut - Jam	7	21	2	3296-23	Nut - Lock	12	12	1
3218-5	Nut - Jam	12	10	1	3296-23	Nut - Lock	4	25	2
3218-13	Nut - Hex.	1	21	2	3296-29	Nut - Hex.	14	12	8
3219-14	Nut - Hex.	8	17	2	3296-29	Nut - Lock	1	4	6
3219-14	Nut - Hex.	1	20	2	3296-29	Nut - Lock	13	4	2
3230-18	Bolt - Carriage	1	8	4	3296-29	Nut - Lock	12	6	1
3234-7	Screw - Hex. Flange Hd.	2	39	4	3296-29	Nut - Lock	6	12	6
3234-29	Screw - Hex. Flange Hd.	2	43	2	3296-29	Nut - Lock	7	13	6
3241-5	Screw - Set Sq. Hd.	14	11	6	3296-29	Nut - Lock	16	23	4
3253-3	Washer - Lock	16	13	2	3296-29	Nut - Lock	11	32	8
3253-4	Washer - Lock	7	2	2	3296-29	Nut - Lock	11	20	4
3253-7	Washer - Lock	20	16	8	3296-39	Nut - Lock	4	4	3
3254-1	Washer - Lock	1	19	2	3296-39	Nut - Lock	12	14	1
3254-2	Washer - ITLW	11	24	1	3296-39	Nut - Lock	7	16	2
3254-2	Washer - Lock	1	22	2	3296-39	Nut - Lock	13	23	1
3254-5	Washer - Lock	8	6	1	3296-39	Nut - Lock	11	28	4
3255-7	Washer - ETLW	11	8	3	3296-39	Nut - Lock	20	29	1
3255-20	Washer - E.T.L.W.	8	14	2	32103-12	Nut - Wing	10	7	2
3256-1	Washer - Flat	8	3	4	32105-13	Screw - Cap Hex. Hd.	1	5	4
3256-22	Washer - Flat	10	6	2	32105-13	Screw - Hex. Flange Hd.	16	41	1
3256-22	Washer - Flat	16	12	2	32105-21	Screw - Machine	13	3	2
3256-22	Washer - Flat	1	25	2	32107-11	Nut - Square	3	8	2
3256-23	Washer - Flat	12	5	1	32120-11	Ring - Retaining	15	36	1
3256-23	Washer - Flat	6	7	4	32120-15	Ring - Retaining	15	34	1
3256-24	Washer - Flat	7	11	4	32121-6	Pin - Roll	14	26	1
3256-24	Washer - Flat	12	13	2	32121-15	Pin - Roll	6	24	2
3256-24	Washer - Flat	11	30	8	32121-91	Pin - Coiled Spring	15	38	3
3256-26	Washer - Flat	12	8	1	32121-111	Pin - Roll	6	2	1
3257-32	Key - Woodruff	15	7	1	32121-112	Pin - Roll	6	13	1
3257-32	Key - Woodruff	14	9	2	32128-20	Nut - Flange Lock	1	17	4
3257-42	Key - Woodruff	20	7	2	32128-20	Nut - Flange Lock	7	18	4
3257-42	Key - Woodruff	21	17	1	32136-9	Nut - Slotted	4	1	1
3257-42	Key - Woodruff	5	17	1	32141-36	Screw - Leveling	7	20	2
3257-42	Key - Woodruff	4	26	1	32144-11	Screw - Cap Hex. Hd.	1	3	8
3257-42	Key - Woodruff	22	17	1	32144-11	Screw - Self Tapping	10	4	3
3258-19	Screw - Round Hd.	3	7	2	32144-11	Screw - Thread Forming	16	26	3
3258-166	Screw - Phillips Hd.	8	4	4	32144-11	Screw - Thread Forming	17	36	2
3269-32	Rivet - Pop	11	9	2	32144-73	Screw - Cap Hex. Hd.	14	29	4
3272-16	Pin - Cotter	12	7	1	32148-6	Nut - Clinch	8	19	8
3272-37	Pin - Cotter	4	32	1	32148-6	Nut - Clinch	16	32	4
3274-4	Pin - Cotter	7	14	2	32148-8	Nut - Clinch	2	40	2
3274-5	Screw - Hex. Socket Hd.	14	20	2	32148-11	Nut - Clinch	2	41	3
3274-31	Screw - Hex. Socket Hd.	8	*	3	32151-46	Ring - Retaining	15	13	2
3274-31	Screw - Hex. Socket Hd.	20	40	3	32151-105	Ring - Retaining	6	9	1
3274-86	Screw - Hex. Socket Hd.	16	27	2	32152-10	Nut	23	3	1
3274-93	Screw - Hex. Socket Hd.	4	28	2	3334-945	Tie - Cable	20	41	1
3289-24	Screw - Socket Flat Hd.	6	28	1	340-2	Fitting - Hydraulic Straight	20	35	1
3290-256	Pin - Hair	20	1	2	340-4	Fitting - Hydraulic Straight	17	26	7
3290-360	Screw - Cap Hex. Hd.	17	8	2	340-6	Fitting - Hydraulic Straight	20	18	4
3290-378	Tie - Cable	8	*	3	340-18	Fitting - Hydraulic 90°	16	36	2
3290-378	Tie - Cable	11	23	2	340-77	Fitting - Hydraulic 90°	17	4	1
3290-378	Tie - Cable	20	37	3	340-77	Fitting - Hydraulic 90°	14	23	2
3290-378	Tie - Cable	4	40	2	340-86	Fitting - Hydraulic Tee	17	17	1
3290-496	Nut - Retaining	2	42	4	340-89	Fitting - Hydraulic 45°	4	20	2
3290-509	Mount - Tie	8	*	3	340-92	Fitting - Hydraulic Straight	17	13	1
3290-509	Mount - Tie	20	39	3	340-98	Fitting - Hydraulic 90°	14	6	2
3296-2	Nut - Lock	17	9	2	340-98	Fitting - Hydraulic 90°	17	29	1
3296-2	Nut - Lock	1	10	4	340-132	Fitting - Hydraulic 90°	20	26	2
3296-4	Nut - Lock	13	8	1	353-550	Plug - Hydraulic	16	39	1
3296-4	Nut - Lock	6	16	2	354-78	Fitting - Hydraulic Straight	16	16	1
3296-8	Nut - Lock	17	11	3	354-120	Fitting - Hydraulic 90°	16	6	1
3296-8	Nut - Lock	1	26	2	354-126	Fitting - Hydraulic 45°	14	34	1
3296-8	Nut - Lock	4	33	1					

\*Not Illustrated

## PRODUCT CHANGES

In an effort to make improvements available to TORO owners as quickly as possible, minor changes are incorporated into Toro's products from time to time that do not become immediately shown in the Parts Catalog. If such a change has been made in your unit, which is not reflected in your manual, see your TORO Distributor or his Authorized TORO Service Dealer for information and part numbers.

## IDENTIFICATION AND ORDERING

### MODEL AND SERIAL NUMBERS

The Sand Pro 5000 has two identification numbers; a model number and a serial number. The two numbers are stamped on a plate which is located on the main frame. In any correspondence concerning the Sand Pro 5000, supply model and serial numbers to assure that correct information and replacement parts are obtained.

To order replacement parts from an Authorized TORO Service Dealer, supply the following information:

1. Model and serial number of the Sand Pro 5000.
2. Part number, description, and the quantity of part(s) desired.

**NOTE:** Do not order by reference number if a parts catalog is being used; use the PART NUMBER.

## TABLE OF CONTENTS

Description	Page	Description	Page
Body Assembly .....	1-2	Hydraulic Reservoir Assembly .....	16
Air Cleaner Assembly No. 46-6890 .....	3	Hydraulic Manifold Assembly .....	17
Front Wheel Assembly .....	4	Control Valve Assembly No. 43-1950 .....	18
Front Hydraulic Drive Motor No. 75-9830 .....	5	Hydraulic Schematic .....	19
Steering Assembly .....	6	Rear Wheel & Lift Assembly .....	20
Seat Assembly .....	7	Left Rear Hydraulic Motor Assembly	
Control Panel Assembly .....	8	No. 75-9831 .....	21
Electrical Schematic .....	9	Right Rear Hydraulic Motor Assembly	
Fuel Tank & Battery Assembly .....	10	No. 75-9840 .....	22
Engine & Muffler Assembly .....	11	Hydraulic Lift Cylinder Assembly No. 83-7000 ...	23
Traction Pedal Assembly .....	12	Engine Briggs & Stratton	
Pump Control Lever Assembly .....	13	Model 303447-0446-01 .....	24-33
Hydraulic Pump Installation Assembly .....	14	International Decal Cross Reference .....	34-36
Hydraulic Pump Assembly No. 85-8240 .....	15	TORO Part Number Index .....	37-40





