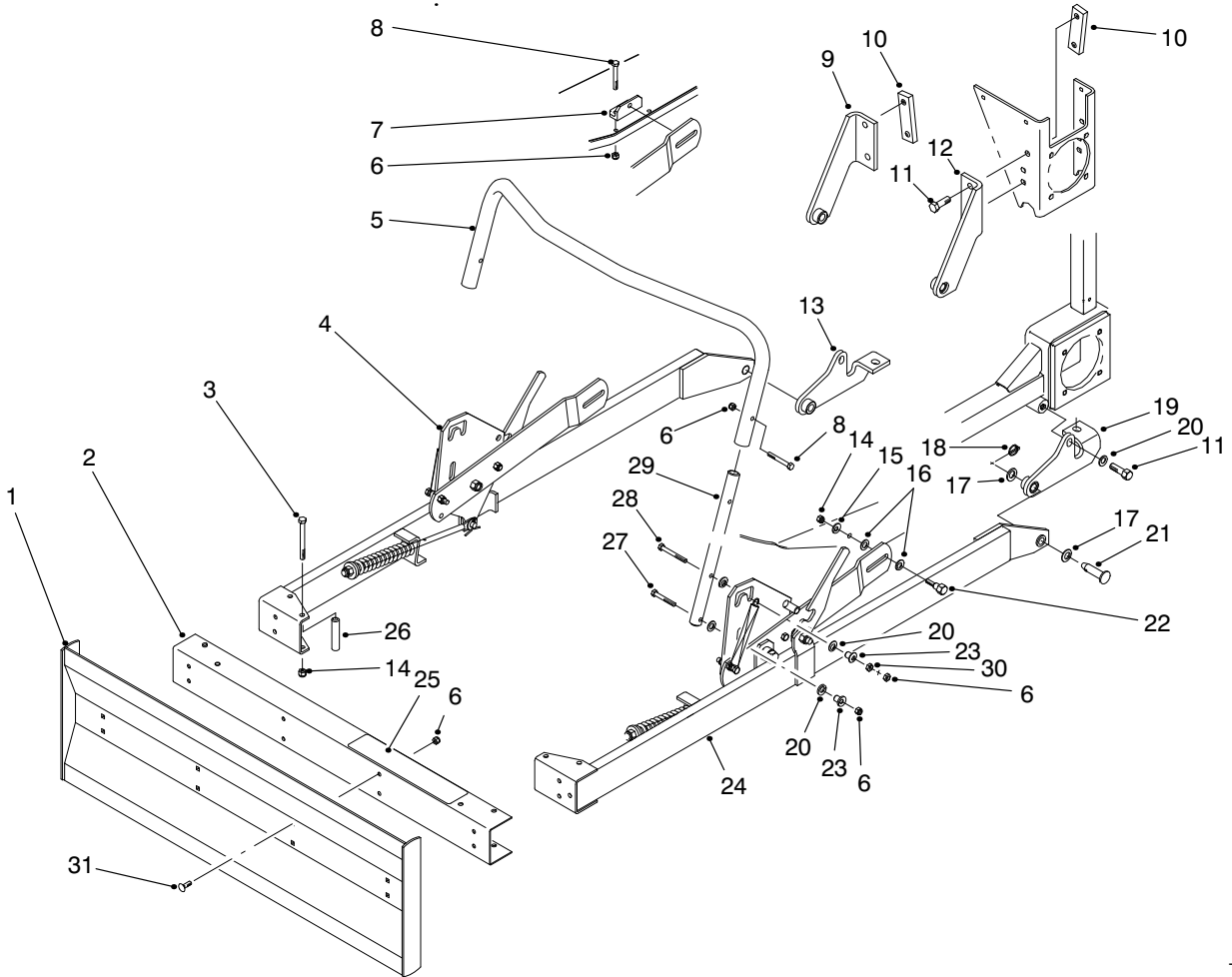




MODEL NO. 08821-30001 & UP	PARTS CATALOG
FRONT BLADE KIT For Sand Pro 2000, 3000, & 5000	



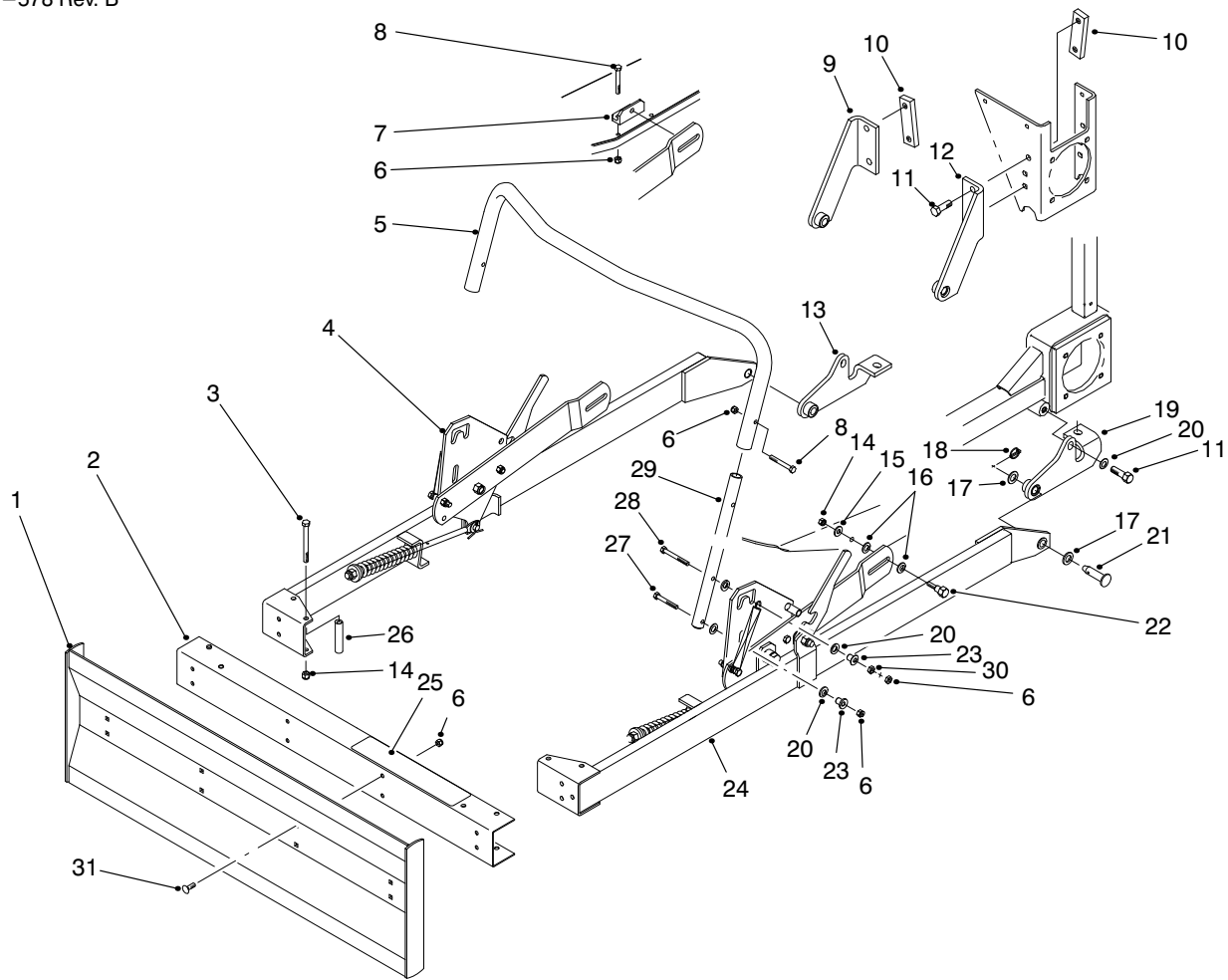
T-1234

BLADE & HANDLE ASSEMBLY

Ref. No.	Part No.	Description	No. Used
1	84-2460	Blade	1
*	92-3055	Blade 5' (Optional)	1
2	16-1019	Asm-Channel (Incl. Ref. #25)	1
*	16-1009	Asm-Channel 5' (Incl. Ref. #25) (Optional)	1
3	323-17	Screw-HH	4
4		Asm-Arm-RH	1
5	92-2314	Handle	1
6	3296-29	Nut-Lock	18
7	92-2324	Bracket-Pivot (Sand Pro 2000 Only)	2
8	322-9	Screw-HH	6
9	92-2326	Bracket-RH (Sand Pro 2000 Only)	1

Ref. No.	Part No.	Description	No. Used
10	80-1210	Block-Mounting (Sand Pro 2000 Only)	2
11	325-6	Screw-HH	4
12	92-2325	Bracket-LH (Sand Pro 2000 Only)	1
13	92-2312	Bracket-RH (Sand Pro 5000 Only)	1
14	3296-39	Nut-Lock	6
15	3256-24	Washer-Lock	2
16	257-5	Washer-Thrust	4
17	257-11	Washer-Thrust	4
18	3290-495	Pin	2
19	92-2311	Bracket-LH (Sand Pro 5000 Only)	1
20	3256-26	Washer-Flat	12
21	92-2323	Pin	2

*Not Illustrated



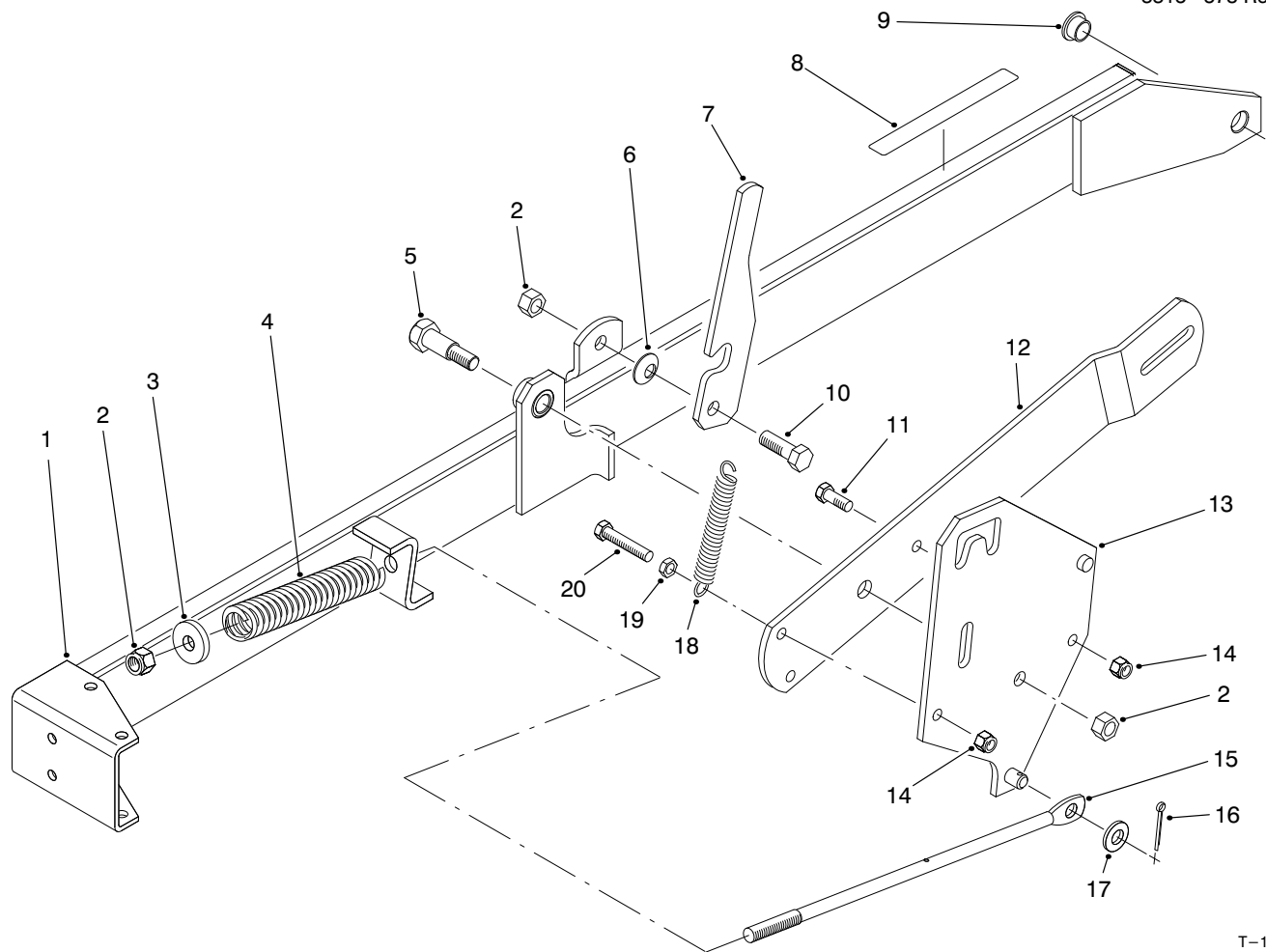
T-1234

BLADE & HANDLE ASSEMBLY (Continued)

Ref. No.	Part No.	Description	No. Used
22	80-1300	Bolt-Shoulder	2
23	27-6602	Spacer	4
24		Asm-Arm, LH	1
25	80-1920	Decal-Warning	1
26	80-1890	Spacer	4
27	322-11	Screw-HH	2

Ref. No.	Part No.	Description	No. Used
28	322-12	Screw-HH	2
29	80-1860	Handle-Upright	1
30	3218-2	Nut-Jam	2
31	3230-2	Bolt-Carriage	8
*	16-1289	5' Blade Kit (Incl. Ref. #1, 2, 6, & 31)	1

* Not Illustrated



T-1235

ARM ASSEMBLIES

Ref. No.	Part No.	Description	No. Used	Ref. No.	Part No.	Description	No. Used
1	92-2308	Arm-RH	1	11	323-6	Screw-HH	2
*	92-2307	Arm-LH	1	12	92-2313	Arm-Lift	2
2	3296-23	Nut-Lock	6	13	92-2319	Plate-RH	1
3	70-8040	Washer-Flat	2	*	92-2318	Plate-LH	1
4	80-1470	Spring-Compression	2	14	3296-39	Nut-Lock	4
5	92-2315	Bolt-Shoulder	2	15	80-1460	Rod	2
6	3290-450	Washer-Belleville	2	16	3272-12	Pin-Cotter	2
7	92-2320	Latch-Lever	2	17	3256-26	Washer-Flat	2
8	80-1930	Decal-Latch	2	18	76-4660	Spring-Extension	2
9	256-317	Bushing	2	19	3218-3	Nut-Jam	2
10	325-6	Screw-HH	2	20	323-9	Screw-HH	2

*Not Illustrated

