

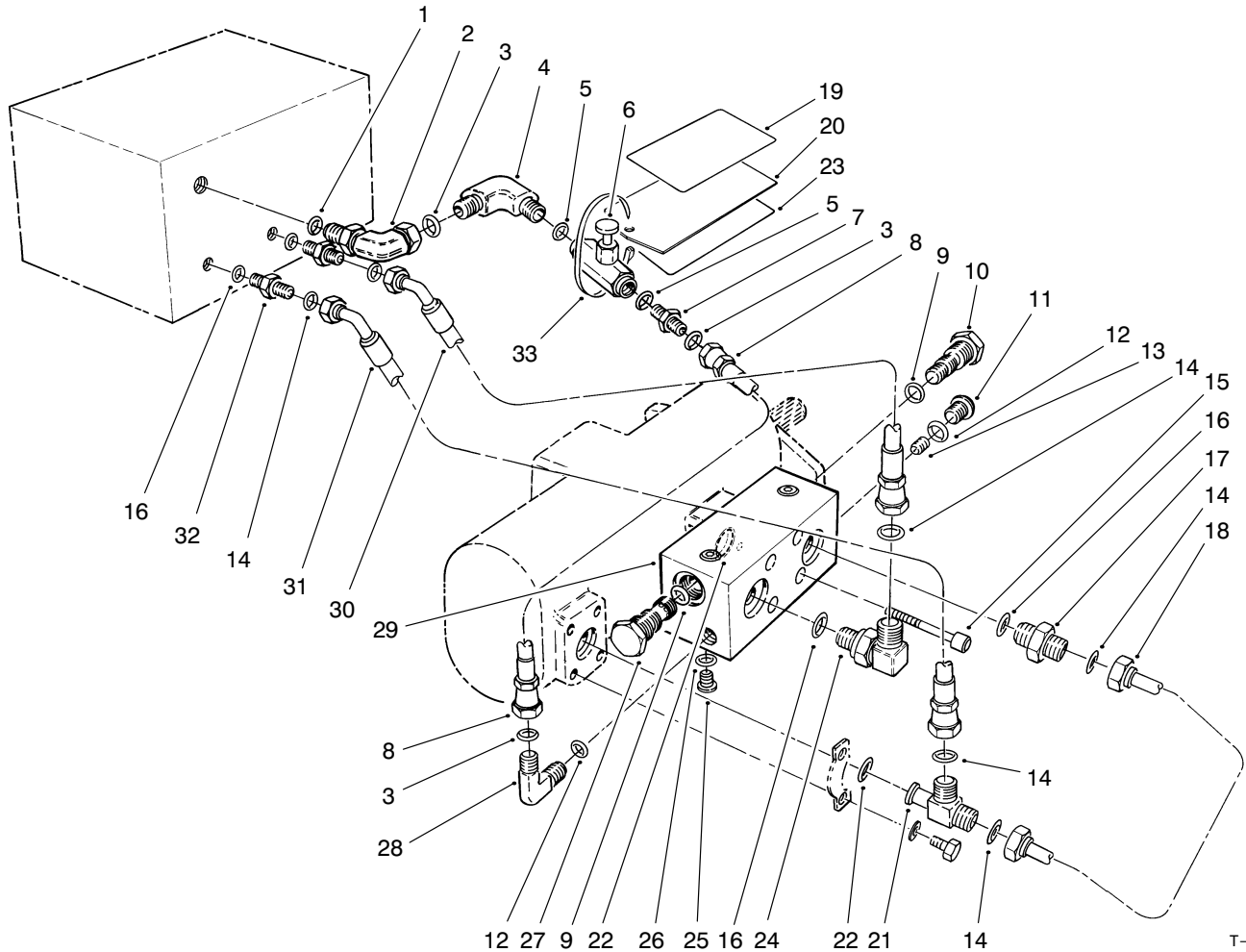


MODEL NO. 30586

PARTS
CATALOG

FLOW COMBINE KIT

For Groundsmaster® 580D

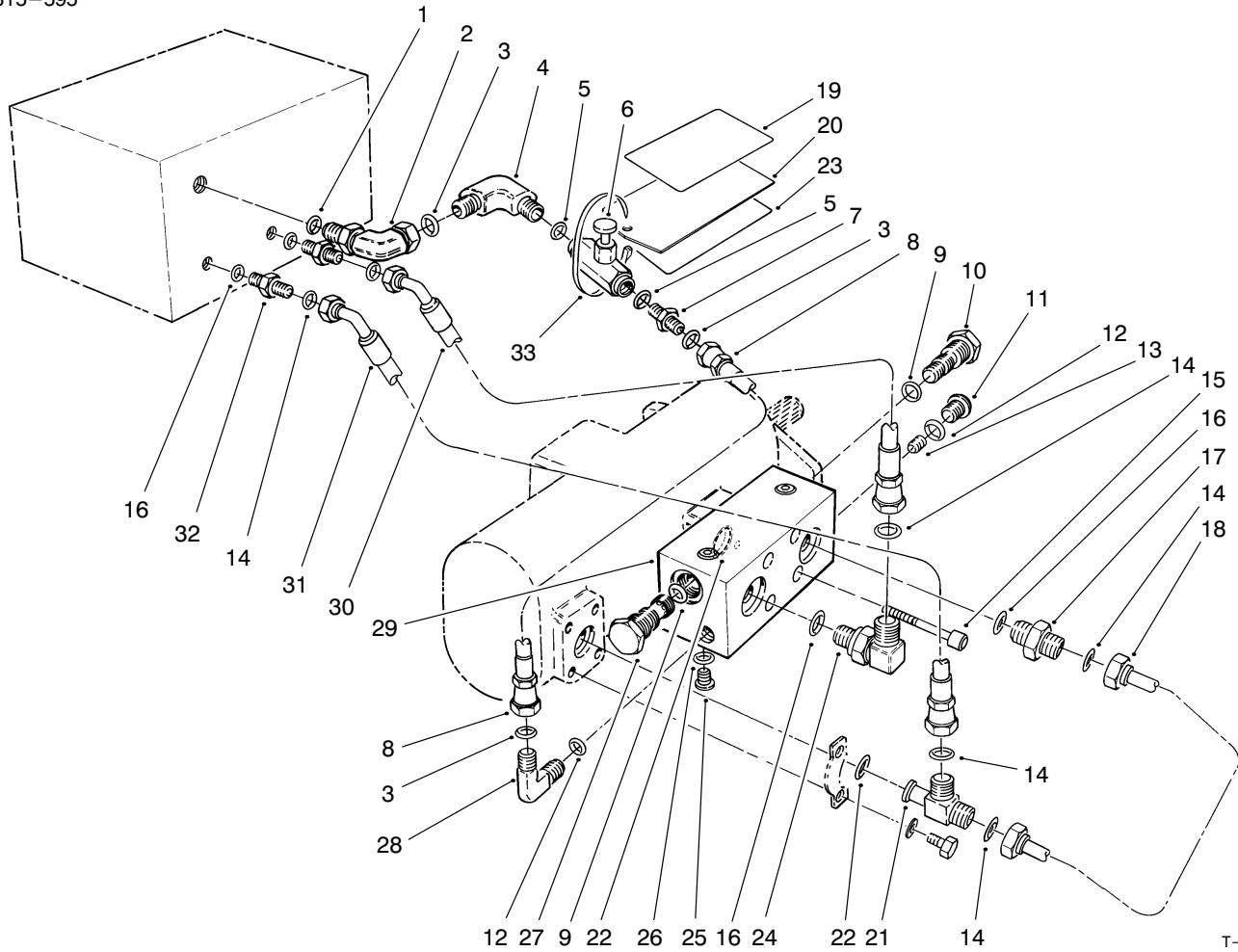


T-1145

INSTALLATION ASSEMBLY

Ref. No.	Part No.	Description	No. Used
1	237-79	O-Ring	1
2	340-18	Fitting (Incl. Ref. #1)	1
3	237-22	O-Ring	2
4	340-110	Fitting - Swivel (Incl. Ref. #3 & 5)	1
5	237-42	O-Ring	2
6	76-2810	Valve - Needle	1
7	340-2	Fitting (Incl. Ref. #3 & 5)	1
8	77-5130	Hose - Hydraulic	1
9	69-4270	Seal Kit	1
10	69-4190	Cartridge - Logic, N.C.	1
11	353-990	Plug - Hex Socket	1
12	237-78	O-Ring	2
13	69-4130	Plug - Orifice	2
14	237-58	O-Ring	2

Ref. No.	Part No.	Description	No. Used
15	3274-20	Screw - Cap, Socket Hd.	4
16	237-81	O-Ring	2
17	340-9	Fitting (Incl. Ref. #14 & 16)	1
18	74-2610	Tube Assembly - Hydraulic	1
19	82-7880	Decal - Operation	1
20	82-7950	Plate - Decal	1
21	74-2590	Fitting - Tee	1
22	340-135	O-Ring	1
23	82-7870	Decal - Warning (1 not illustrated, attached to center of main frame over front cutting deck)	2
24	340-142	Fitting (Incl. Ref. #14 & 16)	1
25	353-991	Plug - Hex. Socket	4
26	237-156	O-Ring	4

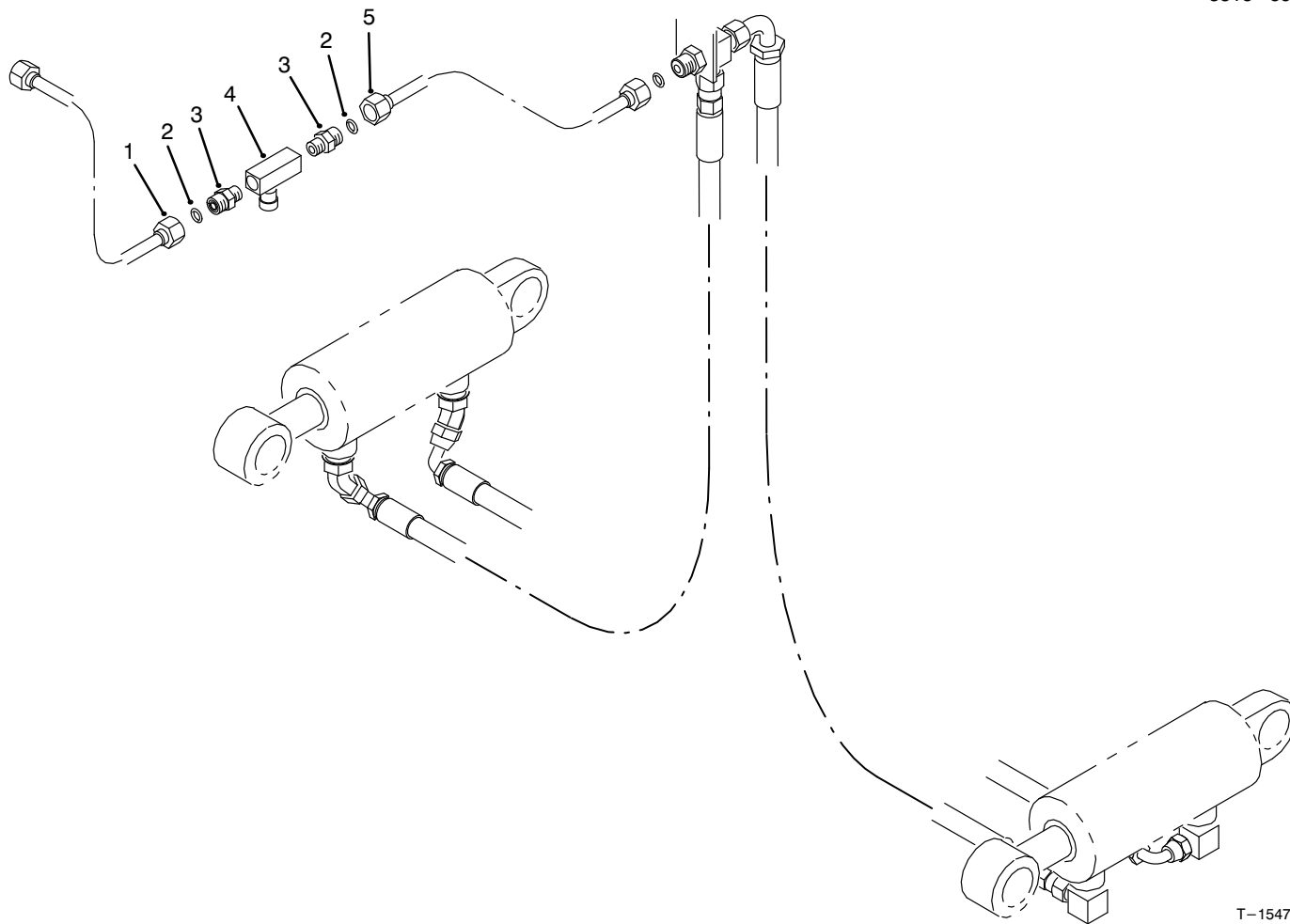


T-1145

INSTALLATION ASSEMBLY (Continued)

Ref. No.	Part No.	Description	No. Used
27	74-2560	Cartridge - Logic, N.C.	1
28	340-97	Fitting	1
29	74-2580	Valve - Flow Combining (Incl. Ref. #9-13, 22, & 25-27)	1

Ref. No.	Part No.	Description	No. Used
30	77-0940	Hose Assembly - Hydraulic	1
31	69-5590	Hose Assembly (Existing)	1
32	340-9	Fitting (Existing)	2
33	3290-378	Tie - Cable	1



T-1547

LIFT CYLINDER PLUMBING ASSEMBLY

Ref. No.	Part No.	Description	No. Used
1	92-1747	Tube - Hydraulic	1
2	237-22	Seal - O-Ring	2
3	340-57	Fitting - Hydraulic (Incl. Ref. #2)	2

Ref. No.	Part No.	Description	No. Used
4	82-8270	Valve - Flow Control	1
5	92-1748	Tube - Hydraulic	1

