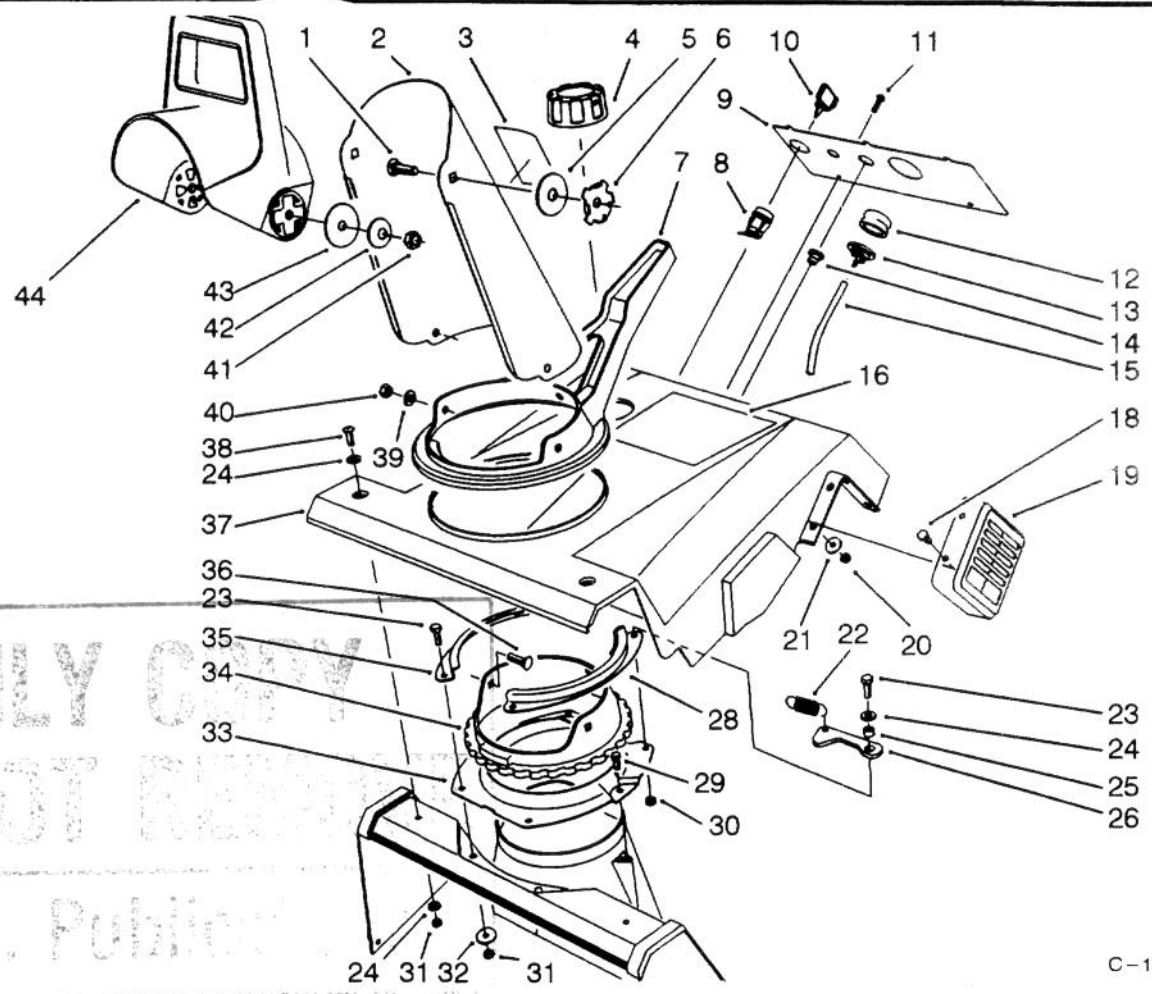




<b>MODEL NO. 38190-3900001 &amp; UP</b> <b>MODEL NO. 38191-3900001 &amp; UP</b>	<b>PARTS</b> <b>CATALOG</b>
<b>CCR 1000™</b> <b>Snowthrower</b>	



ONLY COPY  
 DO NOT REPRODUCE  
 Tech. Publication

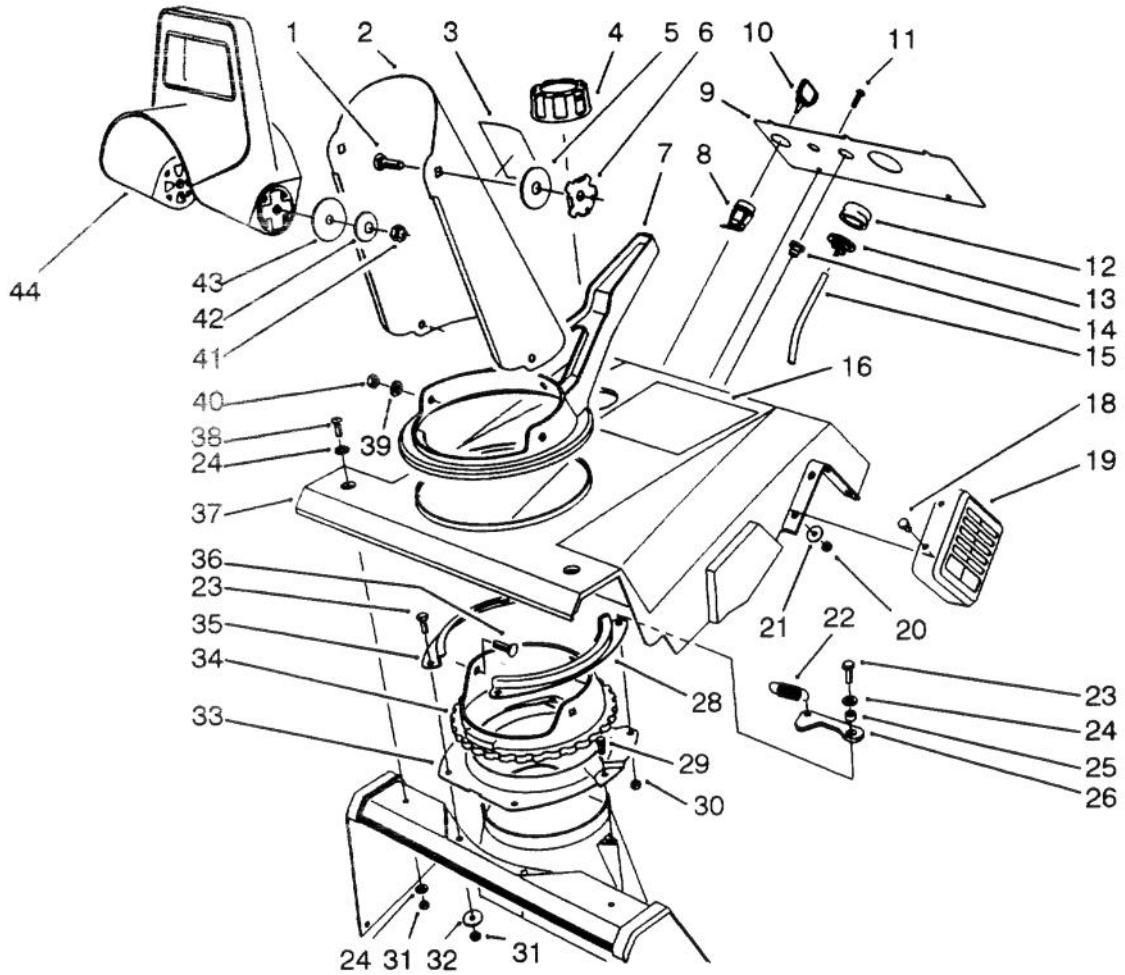
C-1005

## UPPER SHROUD ASSEMBLY

Ref. No.	Part No.	Description	No. Used
1	3230-22	Bolt - Carriage	2
2	60-8690	Chute	1
3	63-3740	Decal - Danger (Model No. 38190)	1
*	53-7660	Decal - Danger (Model No. 38191)	1
4	55-3573	Gas Cap Assembly	1
5	20-4320	Washer - Rubber	2
6	55-8950	Plate - Friction	2
7	71-4940	Handle - Chute	1
8	40-5940	Switch - On-Off	1
9	71-5130	Panel - Control (Model No. 38190 Only)	1
*	77-5030	Panel - Control (Model No. 38191 Only)	1
10	63-8360	Key - Ignition	1

Ref. No.	Part No.	Description	No. Used
11	32144-53	Screw - Slotted Flange Hd.	2
12	66-7460	Bulb - Primer	1
13	44-2750	Body - Primer	1
14	23-7470	Guide - Rope	1
15	44-3173	Hose - Primer	1
16	71-5490	Decal - Shroud	1
18	3290-359	Screw - Cap Hex. Hd.	4
19	71-5340	Guard - Muffler	1
20	3296-2	Nut - Lock	4
21	3256-61	Washer - Flat	4
22	71-5590	Spring - Extension	1
23	321-4	Screw - Cap Hex. Hd.	4
24	3256-22	Washer - Flat	5
25	55-9370	Spacer - Detent Arm	1
26	80-4610	Arm - Detent	1

\*Not Illustrated

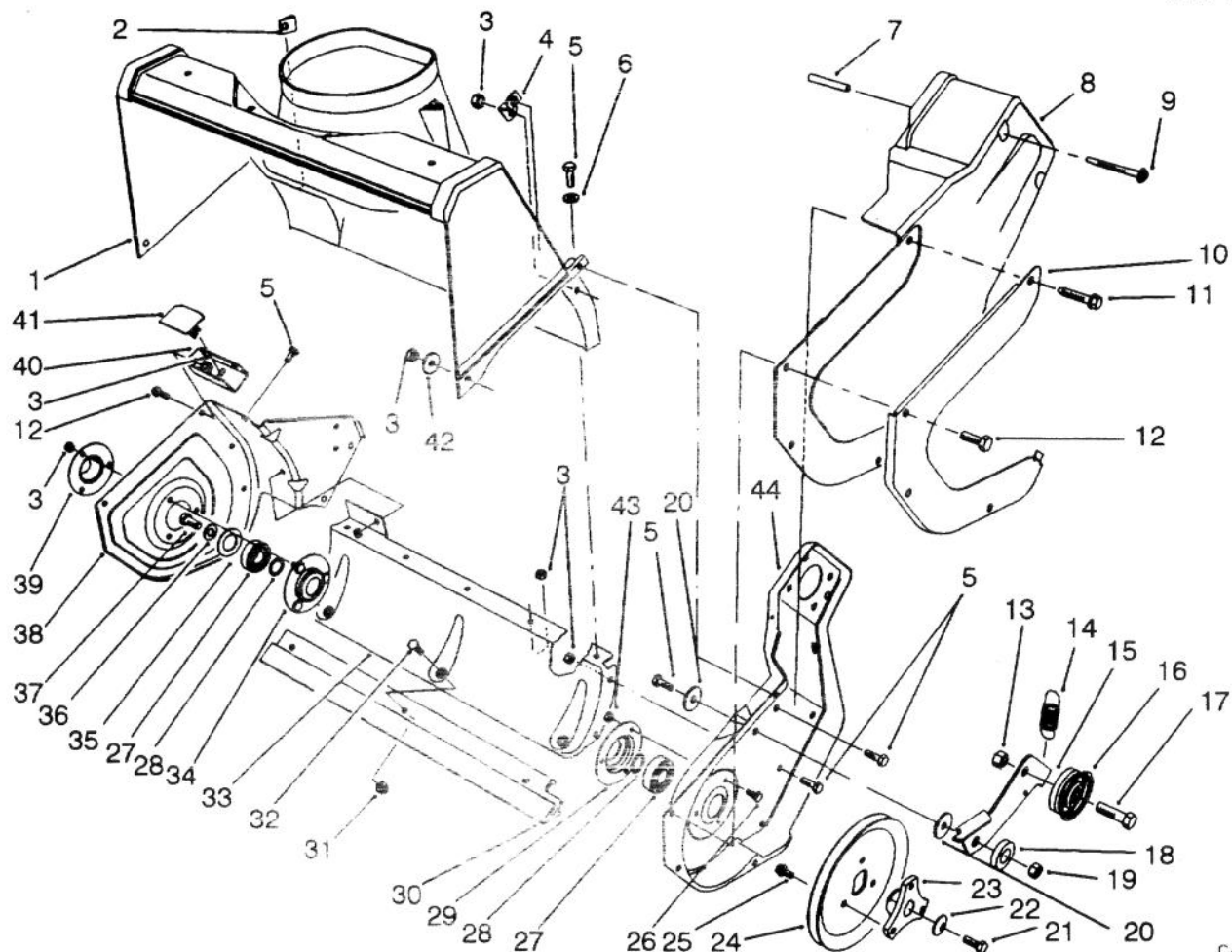


C-1005

### UPPER SHROUD ASSEMBLY (Continued)

Ref. No.	Part No.	Description	No. Used
28	71-4980	Retainer - Chute Ring L.H.	1
29	46-8092	Screw - Hex. Flange Hd.	2
30	3296-56	Nut - Lock	1
31	3296-42	Nut - Lock	5
32	3256-22	Washer - Flat	2
33	55-8921	Support - Chute Ring	1
34	71-4950	Ring - Chute	1
35	71-4990	Retainer - Chute Ring R.H.	1
36	3230-16	Bolt - Carriage	3

Ref. No.	Part No.	Description	No. Used
37	84-5240	Shroud - Upper	1
38	3250-32	Screw - Pan Hd.	2
39	3256-70	Washer - Flat	3
40	32149-1	Nut - Keps	3
41	3296-29	Nut - Lock	2
42	3290-456	Washer - Belleville	2
43	3256-68	Washer - Flat	2
44	56-2680	Deflector - Discharge	1

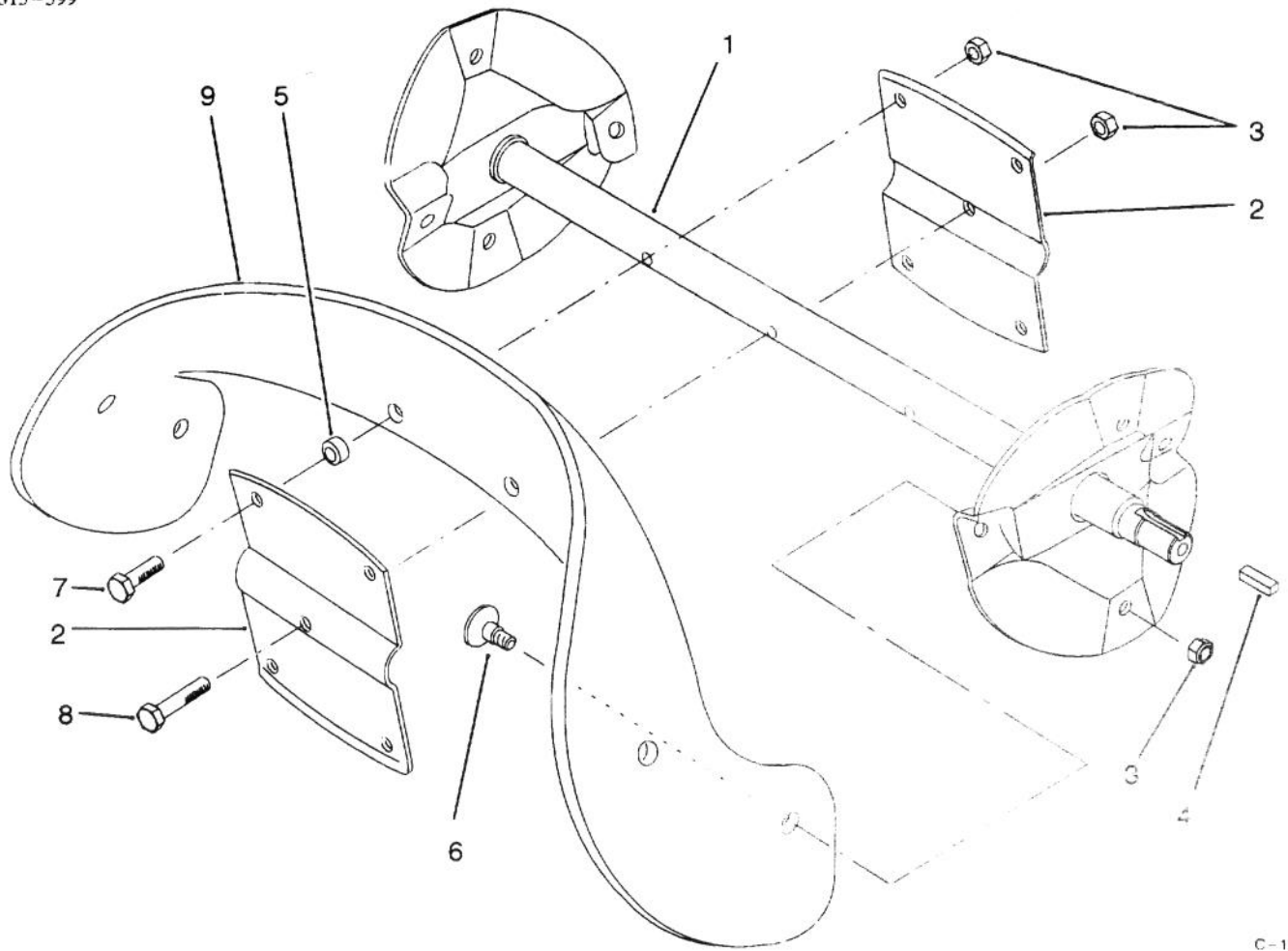


C-1006

## ROTOR HOUSING ASSEMBLY

Ref. No.	Part No.	Description	No. Used
1	55-8700	Housing - Rotor	1
2	32115-14	Nut - U	1
3	3296-42	Nut - Lock	20
4	55-9430	Bracket - Z	1
5	321-4	Screw - Cap Hex. Hd.	10
6	3256-22	Washer - Flat	5
7	57-3830	Tube	2
8	71-5030	Cover - Drive	1
9	71-5350	Screw - Thread Forming	2
10	71-5150	Guard - Drive Cover	1
11	36-3860	Screw - Special	1
12	32105-15	Screw - Hex. Flange Hd.	8
13	3296-39	Nut - Lock	1
14	71-5470	Spring - Brake	1
15	71-5160	Arm - Brake	1
16	71-5260	Pulley - Idler	1
17	323-44	Screw - Cap Hex. Hd.	1
18	80-4620	Washer - Spacer	1
19	3296-56	Nut - Lock	1
20	3256-55	Washer	2
21	321-30	Screw - Cap Hex. Hd.	1
22	3290-456	Washer - Belleville	1

Ref. No.	Part No.	Description	No. Used
23	71-5070	Hub - Pulley	1
24	71-5410	Pulley - Rotor	1
25	12-3270	Screw - Hex. Flange Hd.	3
26	32105-8	Screw - Hex. Hd.	3
27	38-7820	Bearing - Ball	2
28	52-7280	Washer - Thrust	2
29	38-8620	Flange - Bearing	1
30	71-5390	Scraper	1
31	32128-10	Nut - Flange Lock	3
32	3229-11	Bolt - Carriage	3
33	71-4930	Housing - Lower	1
34	52-9110	Flange - Bearing	1
35	52-7270	Washer - Rubber	1
36	3256-24	Washer - Flat	1
37	3234-25	Screw - Cap Hex. Hd.	1
38	71-4920	Sideplate - R.H.	1
39	52-7290	Retainer - Bearing	1
40	71-5310	Bracket - Support	1
41	71-5270	Cover - Bracket	1
42	3256-67	Washer - Flat	2
43	3296-2	Nut - Lock	3
44	71-4911	Sideplate - L.H.	1

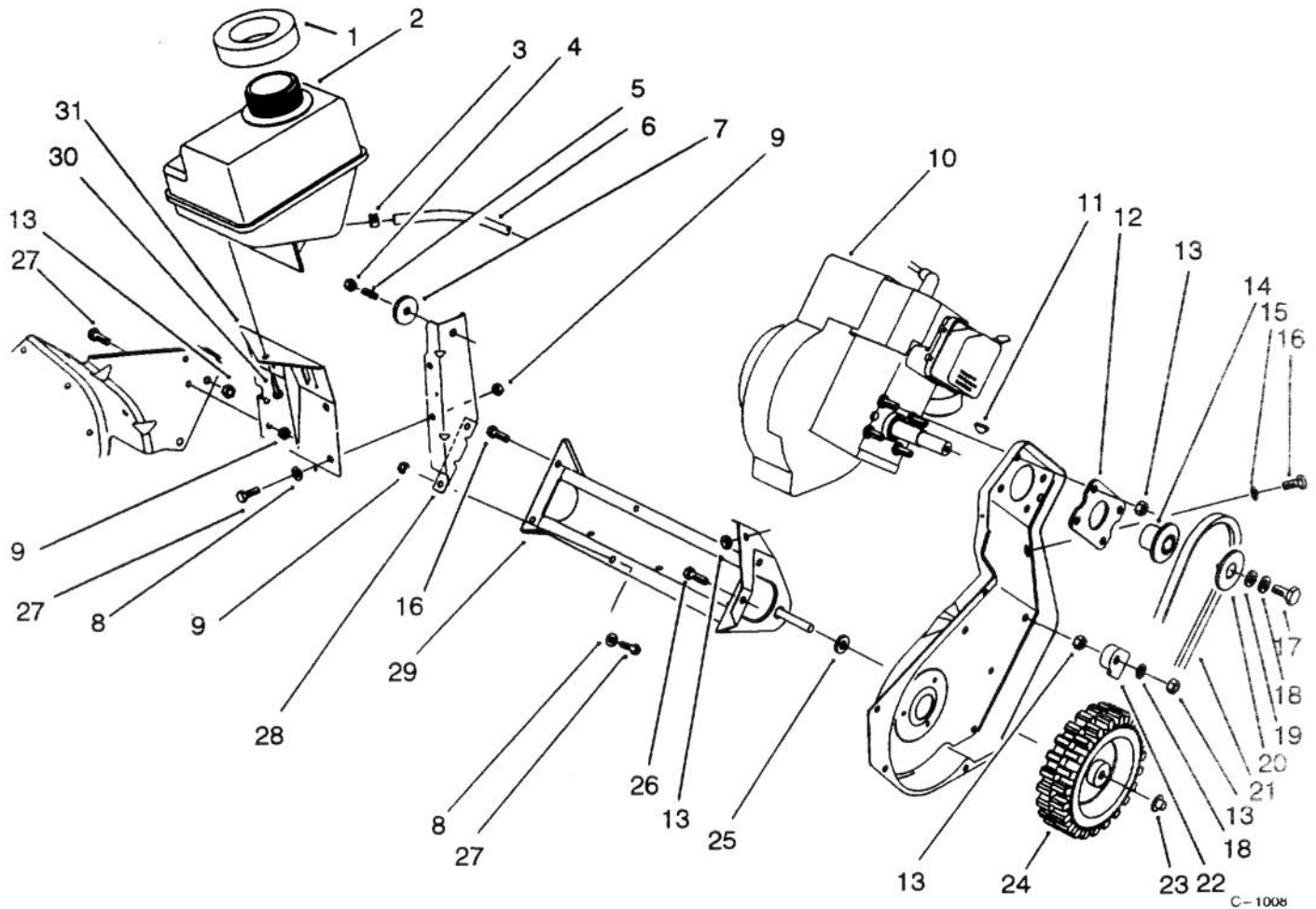


C-1273

## ROTOR ASSEMBLY

Ref. No.	Part No.	Description	No. Used
1	55-9202	Rotor Shaft Assembly	1
2	66-6600	Plate - Rotor	2
3	3296-56	Nut - Lock	13
4	10-8040	Key - Square	1
5	55-9370	Spacer	4

Ref. No.	Part No.	Description	No. Used
6	84-1971	Screw - Countersunk	8
7	321-4	Screw - Cap Hex. Hd.	4
8	321-8	Screw - Cap Hex. Hd.	1
9	88-0781	Blade - Rotor	2

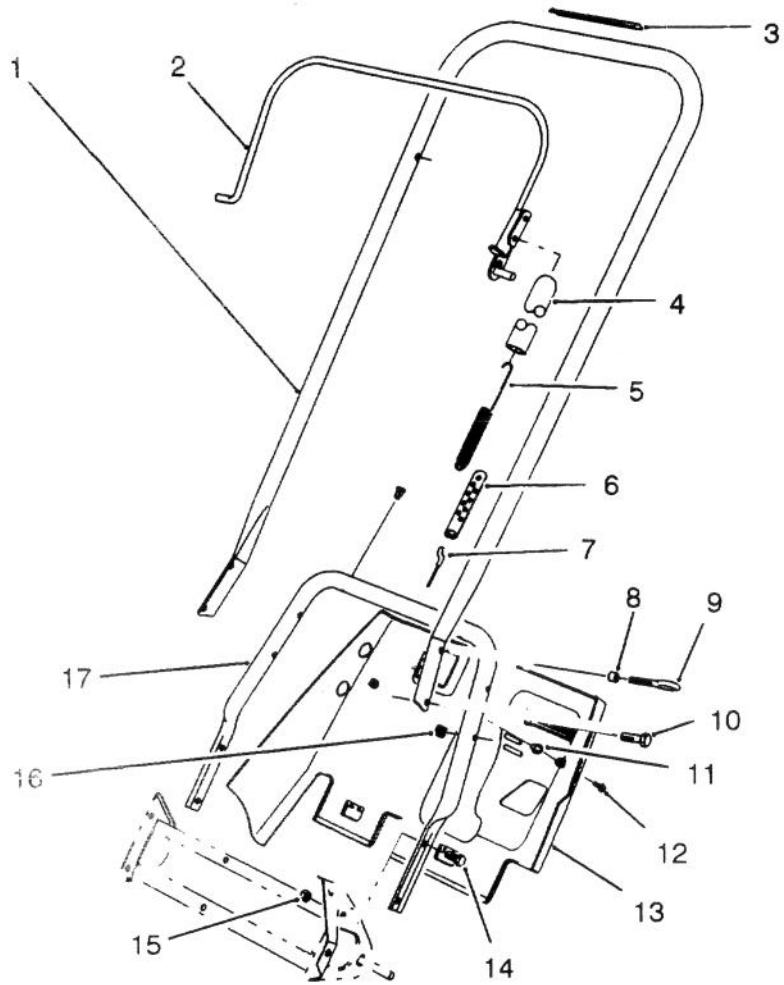


C-1008

## ENGINE & FRAME ASSEMBLY

Ref. No.	Part No.	Description	No. Used	Ref. No.	Part No.	Description	No. Used
1	55-9310	Seal - Fuel Tank	1	15	3256-23	Washer - Flat	1
2	71-5020	Tank - Fuel	1	16	322-3	Screw - Cap Hex. Hd.	3
3	2412-86	Clamp - Hose	2	17	3235-6	Screw - Locking Hex. Hd.	1
4	3296-16	Nut - Lock	1	18	3290-456	Washer - Belleville	1
5	38-8710	Stud	1	19	3256-71	Washer - Flat	2
6	49-2482	Hose - Fuel	1	20	71-5060	Cap - Sheave	1
7	71-5320	Washer - Engine Support	1	21	71-5381	Belt - Drive	1
8	3256-22	Washer - Flat	4	22	84-5610	Guide - Cable	1
9	3296-42	Nut - Lock	6	23	3290-320	Nut - Push	2
†10		Engine (Model No. 38190 - Tec. No. HSK600-1659R) (Model No. 38191 - Tec. No. HSK600-1671R)	1	24	23-3250	Wheel	2
11	3257-3	Key - Woodruff	1	25	71-5440	Spacer - Wheel	2
12	71-5290	Plate - Engine	1	26	322-5	Screw - Cap Hex. Hd.	1
13	3296-29	Nut - Lock	9	27	321-4	Screw - Cap Hex. Hd.	6
14	71-5050	Hub - Sheave	1	28	71-5210	Support - Engine	1
				29	71-5200	Frame Assembly	1
				30	32144-53	Screw - Thread Forming	1
				31	71-5220	Bracket - Fuel Tank	1

†Obtain from your local Tecumseh Dealer.

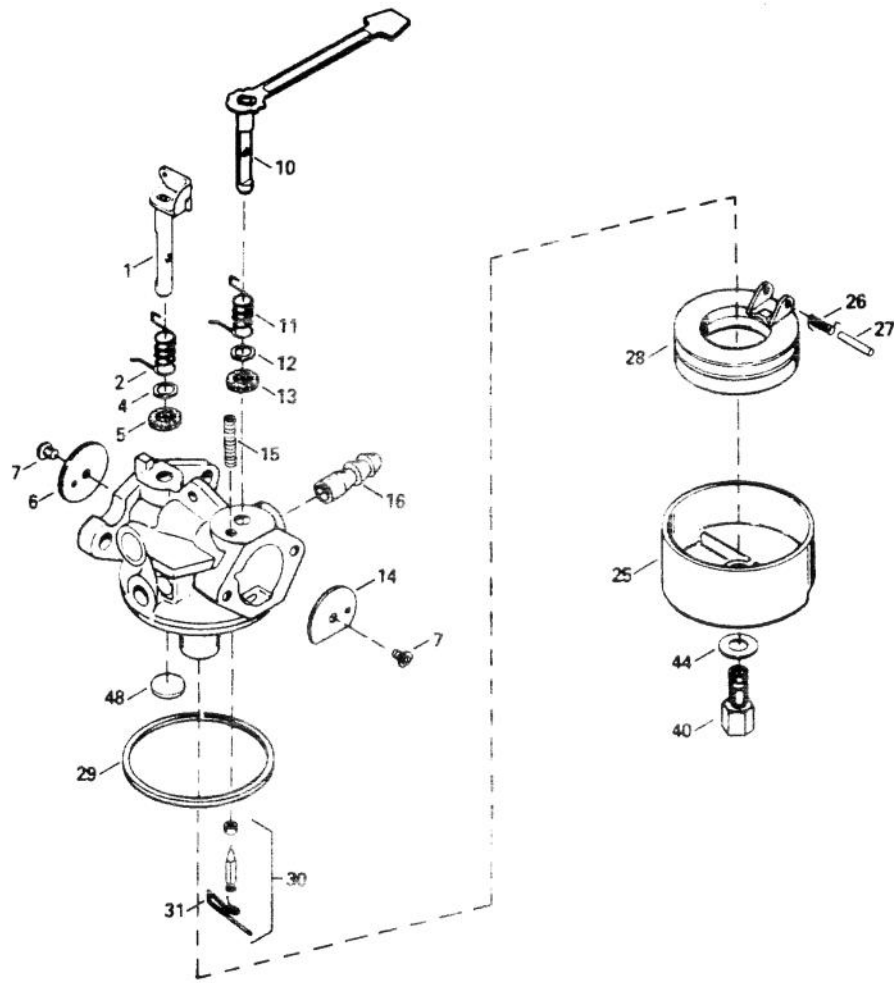


C-1010

## HANDLE ASSEMBLY

Ref. No.	Part No.	Description	No. Used	Ref. No.	Part No.	Description	No. Used
1	71-5090	Handle - Upper	1	8	55-9370	Spacer	1
2	71-5120	Bail Assembly	1	9	3299-1	Bolt - Eye	1
3	66-6870	Decal - Rotor Drive (Model No. 38190)	1	10	32105-11	Screw - Cap Hex. Hd.	3
*	60-9470	Decal - Rotor Drive (Model No. 38191)	1	11	3290-486	Nut - Push	5
4	71-5530	Cover - Spring	1	12	32144-53	Screw - Thread Forming	3
5	71-5480	Spring - Extension	1	13	71-5041	Shroud - Lower	1
6	71-5330	Adjuster - Cable	1	14	322-3	Screw - Cap Hex. Hd.	2
7	55-9322	Cable - Clutch	1	15	3296-29	Nut - Lock	2
				16	3290-225	Nut - Speed	4
				17	71-5370	Handle - Lower	1

\*Not Illustrated



### CARBURETOR NO. 632641

Ref. No.	Part No.	Description	No. Used
1	632166	Throttle Shaft & Lever Assy.	1
2	632169	Spring - Throttle Return	1
4	631184	Washer - Dust Seal	1
5	631183	Dust Seal	1
6	631621	Shutter - Throttle	1
7	650506	Screw - Shutter	2
10	632553	Choke Shaft & Lever Assy.	1
14	631815	Shutter - Choke	1
15	630735	Spring - Choke Positioning	1
16	632164	Fitting - Fuel Inlet	1
25	631700	Bowl - Float	1

Ref. No.	Part No.	Description	No. Used
26	632386	Spring - Float Dampening	1
27	631024	Shaft - Float	1
28	632019	Float - Carburetor	1
29	631028	Seal - O-Ring	1
30	631021	Inlet Needle, Seat & Clip (Incl. Ref. #31)	1
31	631022	Clip - Spring	1
40	632385	Nut - Float Bowl	1
44	631334	Washer - Bowl Nut	1
48	631027	Plug - Welch	1



# ENGINE TECUMSEH MODEL NO. HSK600 TYPE 1659-R (Model No. 38190 Only)

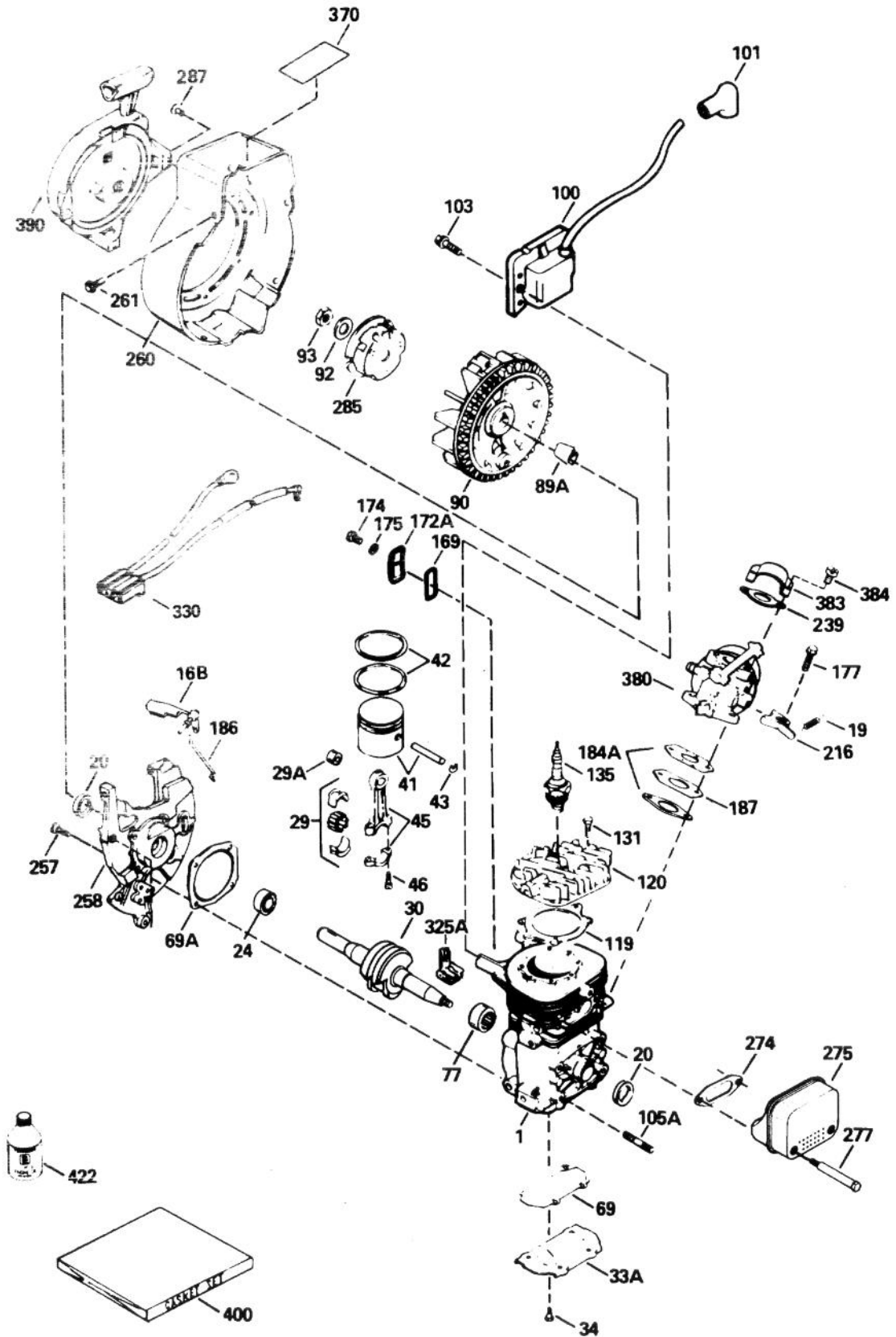
Ref. No.	Part No.	Description	No. Used
1		Block Ass'y - Cylinder (Order Short Block if replacement is required.)	1
16B	490291A	Vane Ass'y - Air	1
20	510319	Seal - Crankshaft	2
24	530110	Bearing - Ball	1
29	530150	Bearing & Liner Set - Needle (37 Needles)	1
29A	530104A	Bearing - Cartridge	1
30	290602	Crankshaft	1
33A	570644	Plate - Cover	1
34	650579	Screw - Pan Flex Hd.	4
41	310283A	Piston & Rod Ass'y	1
42	310190	Ring Set - Piston	2
43	310167	Ring - Piston Pin Retaining	2
45	310235B	Rod Ass'y - Connecting (Incl. Ref. #29, 29A, & 46)	1
46	650633	Screw - Connecting Rod	2
*69	510323A	Gasket - Cover Plate	1
*69A	510292A	Gasket - Housing Base	1
77	530105	Bearing - Needle	1
89A	611032	Sleeve - Flywheel	1
90	611112	Flywheel	1
92	650815	Washer - Belleville	1
93	650390	Nut - Flywheel	1
100	34443A	Solid State Ass'y	1
101	610118	Cover - Spark Plug	1
103	650814	Screw - Hex Hd. Sems	2
105A	650796	Stud - Cylinder	4
*119	510274A	Gasket - Cylinder Hd.	1
120	250240B	Head - Cylinder	1
131	650477	Screw - Pan Flex Hd.	5
135	611049	Plug - Spark (RCJ-8Y or equivalent)	1

Ref. No.	Part No.	Description	No. Used
*169	510325A	Gasket - Cover	1
172A	570647	Cover Assembly - Compression Release	1
174	650579	Screw - Pan Flex Hd.	1
175	650838	Washer - Flat	1
177	650959	Screw	2
*184A	510326A	Gasket - Carburetor	2
186	490294	Link - Governor	1
187	570438A	Spacer	1
216	570645	Lever - Adjusting	1
239	35815	Gasket - Filter Base	1
257	650911	Screw - Torx Pan Hd.	4
258	350396	Base Ass'y - Blower Hsg. (Incl. Ref. #20)	1
260	350397	Housing - Blower	1
261	650737	Screw - Hex Washer Hd. Taptite	4
*274	510346	Gasket - Muffler	1
275	390330	Muffler	1
277	650869	Screw - Hex Hd.	2
285	590551	Cup - Starter	1
†287		Rivet - Pop	4
325A	29443	Clip	1
330	611153	Harness - Wire	1
370	35977	Decal - Caution	1
380	632641	Carburetor (Incl. Ref. #184A)	1
383	570434	Baffle - Air	1
384	650229	Screw - Pan Hd. Sems	2
390	590537	Starter Ass'y - Rewind	1
400	510324B	Gasket Set	1
422	730227A	Oil - 2 Cycle ( 8 oz.)	1

\* Indicates parts used in gasket set ref. #400.

† Obtain locally.

# ENGINE TECUMSEH MODEL NO. HSK600 TYPE 1671-R (Model No. 38191 Only)

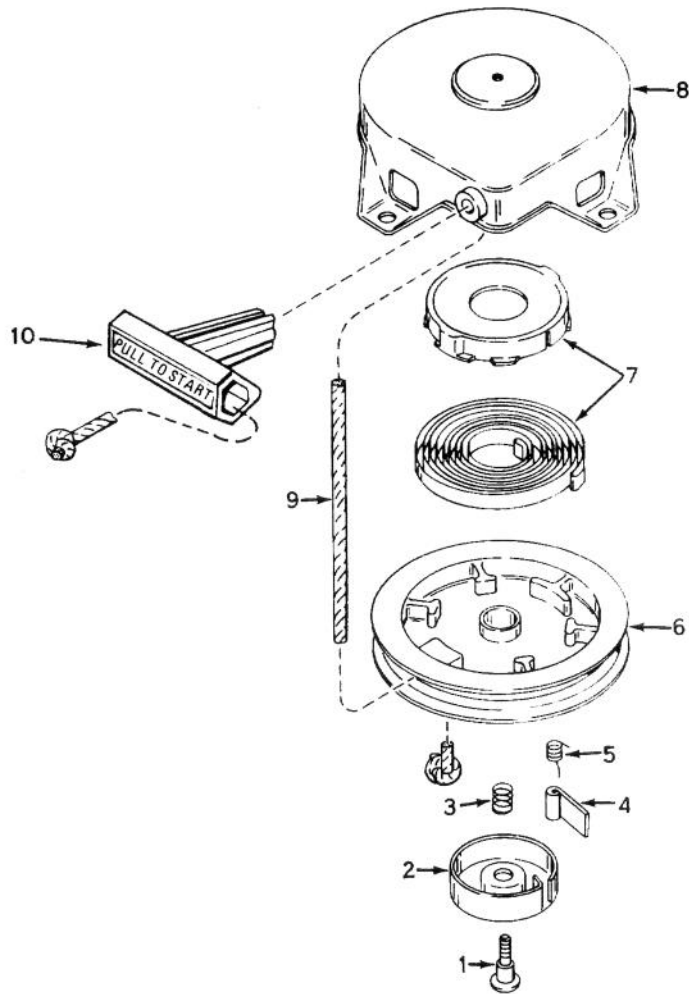


# ENGINE TECUMSEH MODEL NO. HSK600 TYPE 1671-R (Model No. 38191 Only)

Ref. No.	Part No.	Description	No. Used	Ref. No.	Part No.	Description	No. Used
1		Block Ass'y - Cylinder (Order Short Block if replacement is required.)	1	*169	510325A	Gasket - Cover	1
16B	490291A	Vane Ass'y - Air	1	172A	570647	Cover Assembly - Compression Release	1
19	570707	Spring - Governor	1	174	650579	Screw - Pan Flex Hd.	1
20	510319	Seal - Crankshaft	2	175	650838	Washer - Flat	1
24	530110	Bearing - Ball	1	177	650959	Screw	2
29	530150	Bearing & Liner Set - Needle (37 Needles)	1	*184A	510326A	Gasket - Carburetor	2
29A	530104A	Bearing - Cartridge	1	186	490294	Link - Governor	1
30	290602	Crankshaft	1	187	570438A	Spacer	1
33A	570644	Plate - Cover	1	216	570645	Lever - Speed Adjusting	1
34	650579	Screw - Pan Flex Hd.	4	239	35815	Gasket - Filter Base	1
41	310283A	Piston & Rod Ass'y	1	257	650911	Screw - Torx Pan Hd.	4
42	310190	Ring Set - Piston	2	258	350396	Base Ass'y - Blower Hsg. (Incl. Ref. #20)	1
43	310167	Ring - Piston Pin Retaining	2	260	350397	Housing - Blower	1
45	310235B	Rod Ass'y - Connecting (Incl. Ref. #29, 29A, & 46)	1	261	650737	Screw - Hex Washer Hd. Taptite	4
46	650633	Screw - Connecting Rod	2	*274	510346	Gasket - Muffler	1
*69	510323A	Gasket - Cover Plate	1	275	390330	Muffler	1
*69A	510292A	Gasket - Housing Base	1	277	650869	Screw - Hex Hd.	2
77	530105	Bearing - Needle	1	285	590551	Cup - Starter	1
89A	611032	Sleeve - Flywheel	1	†287		Rivet - Pop	4
90	611112	Flywheel	1	325A	29443	Clip	1
92	650815	Washer - Belleville	1	330	611153	Harness - Wire	1
93	650390	Nut - Flywheel	1	370	35977	Decal - Caution	1
100	34443A	Solid State Ass'y	1	380	632641	Carburetor (Incl. Ref. #184A)	1
101	610118	Cover - Spark Plug	1	383	570434	Baffle - Air	1
103	650814	Screw - Hex Hd. Sems	2	384	650229	Screw - Pan Hd. Sems	2
105A	650796	Stud - Cylinder	4	390	590537	Starter Ass'y - Rewind	1
*119	510274A	Gasket - Cylinder Hd.	1	400	510324B	Gasket Set	1
120	250240B	Head - Cylinder	1	422	730227A	Oil - 2 Cycle (8 oz.)	1
131	650477	Screw - Pan Flex Hd.	5				
135	611049	Plug - Spark (RCJ-8Y or equivalent)	1				

\* Indicates parts used in gasket set ref. #400.

† Obtain locally.



### RECOIL STARTER NO. 590537

Ref. No.	Part No.	Description	No. Used
1	590409A	Screw - Retainer	1
2	590410	Retainer	1
3	590411	Spring - Brake	1
4	590148	Dog - Starter	1
5	590412	Spring - Dog	1

Ref. No.	Part No.	Description	No. Used
6	590413A	Pulley	1
7	590414	Spring & Keeper Assembly	1
8	590536	Starter Housing Assembly	1
9	590535	Rope - Starter	1
10	590452	Handle - Starter	1